

California School Dashboard Local Indicators

Bridget Baublits
Associate Superintendent
Student & Community
Services



LOCAL CONTROL ACCOUNTABILITY PLAN (LCAP)

Local Control and Accountability Plan

The instructions for completing the Local Control and Accountability Plan (LCAP) follow the template.

Local Educational Agency (LEA) Name	Contact Name and Title	Email and Phone
Santa Barbara County Education Office	Bridget Baubits Associate Superintendent, Student and Community Services	bsaubits@sbceoe.org 805-964-4711

Plan Summary [2025-26]

General Information

A description of the LEA, its schools, and its students in grades transitional kindergarten–12, as applicable to the LEA. LEAs may also provide information about their strategic plan, vision, etc.

The Santa Barbara County Education Office (SBCEO) Juvenile Court and Community Schools (JCCS) includes two schools in the Santa Maria community: Dos Puentes School (Court School) and Peter B. FitzGerald (Community School). Santa Maria is a diverse and resilient community with significant needs. As compared to the two other largest cities in Santa Barbara County, the city of Santa Barbara and the city of Lompoc, Santa Maria has the highest percentage of foreign-born residents (27.8%) and households where a language other than English is spoken (54.6%). Educational attainment is the lowest of the three cities, with only 70.1% of residents age 25 and older having completed high school. While it has the lowest poverty rate among the county's three largest cities (11.1%), socioeconomic disparities persist. The city has faced the highest levels of violent and property crime in the region, coinciding with elevated juvenile justice involvement. As such, it remains a priority area for youth-focused collaboration (2024-25 County Juvenile Justice Plan). Encouragingly, Part I crimes (i.e. homicide, rape, robbery, arson) decreased by 30% in early 2024 compared to the same period in 2023, following a 28% drop the year prior. Overall, crime fell 46% from 2022 to 2024 (Santa Maria News, May 15, 2024). Leveraging strong community partnerships and cultural strengths remains essential in supporting students and building a safer, more equitable future.

Peter B. FitzGerald (FitzGerald) is located at the SBCEO North County offices. FitzGerald has operated in partnership through a Memorandum of Understanding (MOU) with two local school districts for the past decade. Santa Maria Joint Union High School District (SMJUHSD) refers 9th-12th grade students, and Santa Maria-Santa School District (SMSSD) refers 7th-8th grade students to attend school at FitzGerald. Both districts may refer students for reasons such as expulsion, behavior, and chronic absenteeism, although for the past couple of years, SMJUHSD has only referred expelled students. In 2024-25, FitzGerald enrollment ranged from a low of 21 students to a high

2025-26 Local Control and Accountability Plan for Santa Barbara County Education Office

Page 5 of 142

GOALS



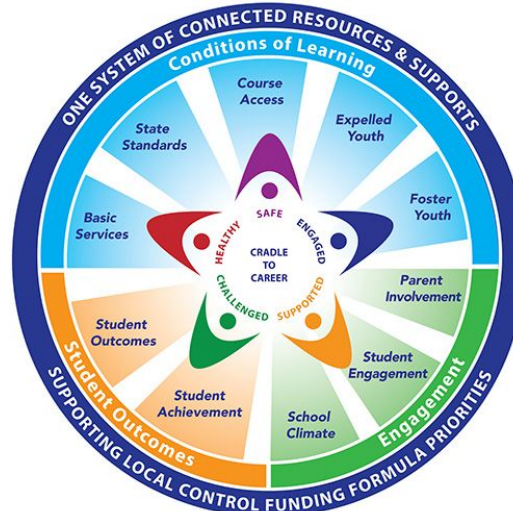
**8 STATE PRIORITIES
*10 FOR COES**

METRICS



**STATE & LOCAL
INDICATORS**

GOALS, ACTIONS, METRICS



Priority Areas	State Indicators	Local Indicators
Basic Conditions of Learning (1)	N/A	Basic Conditions at School
Implementation of State Standards (2)	N/A	Implementation of State Standards
Parent Engagement (3)	N/A	Parent Engagement
Student Achievement (4)	Academic Indicator English Learner Indicator	N/A
Student Engagement (5)	Chronic Absence Indicator Graduation Rate Indicator	N/A
School Climate (6)	Suspension Rate	Local Climate Survey
Access to Broad Course of Study (7)	College/ Career Indicator	Access to Broad Course of Study
Outcomes in a Broad Course of Study (8)	College/Career Indicator	N/A
Coordination of Services for Expelled Students (9)*	N/A	Coordination of Services for Expelled Youth
Coordination of Services for Foster Youth (10)*	N/A	Coordination of Services for Foster Youth

*** Applies to County Education Offices Only**

Deeper Look at Local Indicators

Self-Reported Measures

Local indicators cover LCFF priorities where no state collected data exists. LEAs self-report on their performance.

Dashboard Integration

They complement state indicators on the Dashboard. Together, they create a fuller picture of a district/COE's overall performance.

Improvement Focus

These measures emphasize local performance and improvement efforts, and highlight areas for growth.

August to June

Measure Progress

Collect and analyze Local Indicator data to inform LCAP development.

Before July 1

Present to County Board

Present Local Indicators to the governing board in conjunction with the LCAP adoption.

By August 1

Report on Dashboard

Report Local Indicator data on the CA School Dashboard.

Local Indicator Requirements

Local Indicator Evaluation Results

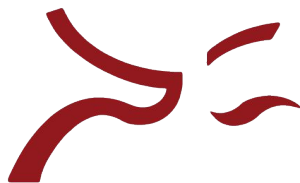
Based on the three Local Indicator requirements for a district/COE:

1. Annually measure its progress.
2. Report the results at a regularly scheduled public meeting of the local governing board.
3. Report results to the public through the CA School Dashboard.



**SBCEO has MET
ALL of the Local Indicators**

Santa Barbara County Education Office



SANTA BARBARA
County Education Office
Susan C. Salcido, Superintendent

Thank you