



# Student Handbook

## 2025-2026

### PAGE HIGH SCHOOL

PRINCIPAL

**Leigh Guenther**

ASSISTANT PRINCIPAL

**Kevin Anderson**

**Teresa Robbins**

✉ 434 South Lake Powell Blvd.  
P.O. Box 1927  
Page, Arizona 86040



<https://phs.pageud.org>

☎ Office: 928-608-4138  
Fax: 928-608-4289

[www.pageud.org](http://www.pageud.org)

SUPERINTENDENT

Dr. Bryce Anderson

GOVERNING BOARD

Desiree Fowler, President  
Bunny Cochran  
Mike Mangum  
Chris Benally  
Renee Tsoie

## Table of Contents

Welcome Letter from the Principal.....	3
Page Unified School District & PHS Vision/Mission/Motto.....	4
Parent and Student Responsibilities .....	5
Page High School Contact Information and Hours of operation .....	6
Bell Schedules .....	7
PUSD Student Calendar .....	9
PHS Calendar of Events .....	10
<b><u>Section I</u></b>	
Academic Information.....	12
<b><u>Section II</u></b>	
Page Unified School District Student Code of Conduct .....	15
<b><u>Section III</u></b>	
Safe Place .....	21
Incidents of Abuse .....	21
Report Bullying, Policies JICK-EB, JICFA-EB .....	21
Attendance Policy and Procedures .....	25
Attendance Intervention Chart.....	29
Tardy Intervention Chart .....	31
Navajo Nation Truancy Diagram .....	33
PHS Cell Phone Policy .....	35
PHS Cellphone Daily Procedures .....	35
ARS 15-120.05 .....	36
Dress for Success .....	37
<b><u>Section IV</u></b>	
Student Behavior Responses and Interventions .....	39
PUSD Discipline Matrix for grades 6-12 .....	43
<b><u>Section V</u></b>	
Other Business and Information.....	52
PHS Fee Schedule, Cafeteria Fees.....	52
Expectations for School Environment .....	55
Lockers, Backpacks, masks .....	55
Parking .....	55
Closed-Campus Lunch; Off-campus lunch eligibility .....	57
PHS Dance Rules .....	58
<b><u>Section VI</u></b>	
Transportation Information .....	62
<b><u>Section VII</u></b>	
Guidelines for Computer Use & Technology Resources .....	66
Power School Student and Parent Portal Access Instructions .....	69
<b><u>Section VIII</u></b>	
Page High School Student Handbook Acknowledgement .....	71

*Disclaimer: it is intended that all Page Unified School District handbooks comply with the policies established by the Governing Board of the Page Unified School District. In the event that anything in this handbook conflicts with current district policy, district policy will prevail.*

# WELCOME

## TO **PAGE HIGH SCHOOL**



*Live the Sand Devil Way!*

**Be kind.  
Get Involved.  
Work Hard.**



Disclaimer: it is intended that all Page Unified School District handbooks comply with the policies established by the Governing Board of the Page Unified School District. In the event that anything in this handbook conflicts with current district policy, district policy will prevail.



## LETTER FROM THE PRINCIPAL

Dear Sand Devil Students, Parents and Guardians,

Welcome to the 2025 – 26 school year and all the wonderful things that it will bring. I am excited for the Class of 2031 to join our Sand Devil Nation. Equally I am excited to watch the Class of 2026 walk across the stage in May. Throughout the school year, Page High School will work to ensure that all students have access to on grade level learning opportunities grounded in best practices. These best practices are demonstrated through the extensive training our staff have in AVID as well as CKH. We believe that we have the people and tools necessary to expect learning at high levels for all students.

We recognize that student learning is our main focus point at Page High School. Students in all grades 7<sup>th</sup> through 12<sup>th</sup> will have opportunities to grow within the classroom as well as through clubs and extracurricular activities. The staff at Page High School truly wants what is best for each student and want them to each reach their full potential while a student on the Page HS campus. We encourage input from all stakeholders and have an open door policy. We ask that the chain of command is followed and at each level there is an opportunity given for resolution of the concern. Please start with the teacher of record, counselor or Assistant Principal as resolution is being sought. We fully recognize that this school year will potentially present some challenges as we work through the transition of becoming a larger High School community.

We are proud of our students' accomplishments and know that it is worthy to prepare each and every student for life after Page High School. I look forward to working and getting to know each student and stakeholder of Page High School during the 2025/26 school year. It is important to all of us for each student to accomplish the goals they might have for their High School years.

Sincerely,

*Leigh Guenther*

Mr. Leigh Guenther  
Principal, Page High School  
lguenther@pageud.org

# Welcome to Sand Devil Nation!



## **PAGE UNIFIED SCHOOL DISTRICT VISION**

Page Unified School District is a community of learners who direct our collective actions and resources towards the unique learning needs of every child in order for all students to become college and career ready and successful in a global society.

## **PAGE UNIFIED SCHOOL DISTRICT MISSION**

“Our Schools are passionate about the learning-for-all mission and understand that every student matters. We are responsible and accountable for the education of every student that walks through our doors every day.”

## **PAGE UNIFIED SCHOOL DISTRICT MOTTO**

Collectively committed to every student, every day, every minute.

## **PAGE HIGH SCHOOL MISSION**

Every Page High School graduate is college, career and community ready.



*Disclaimer: it is intended that all Page Unified School District handbooks comply with the policies established by the Governing Board of the Page Unified School District. In the event that anything in this handbook conflicts with current district policy, district policy will prevail.*

## **PAGE HIGH PARENT RESPONSIBILITIES:**

We, as parents, will support our children's learning in the following ways:

- Talk to your teen on a daily basis about school. Ask your student what they learned in school and do not accept, "nothing" as an answer.
- Expect regular attendance and know the PHS attendance policy. If possible, check your child's attendance in Power Parent.
- Expect punctuality to all classes.
- Get to know your child's teachers.
- Attend all parent-teacher conferences with your student.
- Bring questions and concerns to the teacher's attention.
- Identify an appropriate time and place for homework.
- Help your child resolve conflicts in positive ways.
- Promote positive use of a child's extracurricular time.
- Promptly read all notices from the school or the school district either received by your child or by mail.

## **PAGE HIGH STUDENT RESPONSIBILITIES:**

We, PHS students, will share the responsibility to improve our academic achievement and achieve the State's high standards. Specifically, we shall:

- Attend school every day and be punctual.
- Work hard to do our best in achieving goals and advancing our knowledge of the world.
- Respect and cooperate with other students and adults.
- Seek assistance from teachers outside of class time when I need help.

### **Annual Notification of Nondiscrimination**

*Page Unified School District does not discriminate on the basis of race, color, national origin, gender, age or disability in admission to its programs, services, or activities, in access to them, in treatment of individuals, or in any aspect of their operations. Page Unified School District also does not discriminate in its hiring or employment practices.*

*This notice is provided as required by Title VI of the Civil Rights Act of 1964, Section 504 of the Rehabilitation Act of 1973, Title IX of the Education Amendments of 1972, the Age Discrimination Act of 1975, and the Americans with Disabilities Act of 1990. Questions, complaints, or requests for additional information regarding these laws may be forwarded to the designated compliance coordinator: **Bryce Anderson, Superintendent, 500 South Navajo Drive Page, Arizona, (928) 608-4117 or Penni Case, Director of Educational Services, 500 South Navajo Drive Page, Arizona, (928) 608-4154.***

## CONTACT INFORMATION

<b>LEIGH GUENTHER</b>	PRINCIPAL	928-608-4185
<b>TERESA ROBBINS</b>	ASSISTANT PRINCIPAL	928-608-4148
<b>KEVIN ANDERSON</b>	ASSISTANT PRINCIPAL	928-608-4136
<b>KENDRA CHILDS</b>	ADMINISTRATIVE SECRETARY	928-608-4133
<b>ERIN CRUZ</b>	BEHAVIOR INTERVENTIONIST	928-608-4433
<b>ROCHELLE WILLIAMS</b>	BEHAVIOR INTERVENTIONIST	928-608-4153
<b>KAYLA CORBER</b>	ATTENDANCE CLERK	928-608-4135
<b>HEATHER SAVEEDRA</b>	ATTENDANCE CLERK	928-608-4135
<b>MIKAYLA YELLOWHAIR</b>	REGISTRAR	928-608-4142
<b>MEGAN MOORE</b>	ATHLETIC DIRECTOR	928-608-4134
<b>STEVE YOUNG</b>	TRANSPORTATION	928-608-4131

## Hours of Operation

### PAGE HIGH SCHOOL ATTENDANCE OFFICE HOURS

MONDAY - THURSDAY  
7:30 AM - 4:15 PM

### AFTER SCHOOL PROGRAMMING HOURS

MONDAY - WEDNESDAY  
3:50 PM - 5:15 PM

No Programming September 15-18, 2025 and February 23-26, 2025




### STUDENT STORE HOURS

MONDAY - THURSDAY  
7:40 - 7:55 AM  
12:03 - 12:43 PM  
3:40 - 3:55 PM



*Disclaimer: it is intended that all Page Unified School District handbooks comply with the policies established by the Governing Board of the Page Unified School District. In the event that anything in this handbook conflicts with current district policy, district policy will prevail.*

# DAILY BELL SCHEDULES

 <b>Page High School</b> 2025-2026  <b>bell schedule</b> Monday - Thursday			
Grades 10, 11, 12	Grades 7, 8, 9		
<b>1st period</b> 7:55 - 8:52	<b>1st period</b> 7:55 - 8:52		
<b>2nd period</b> 8:57 - 9:54	<b>2nd period</b> 8:57 - 9:54		
<b>3rd period</b> 9:59 - 10:56	<b>3rd period</b> 9:59 - 10:56		
<b>4th period</b> 11:01 - 11:58	<b>4th period</b> 11:01 - 11:52		
<b>Off-campus Option</b>	<b>Closed Campus</b>		
<b>LUNCH</b> 12:03 - 12:34	<b>LUNCH</b>		
<b>5th period</b> 12:39 - 1:36	<b>4th period</b> 11:37 - 12:34		
<b>6th period</b> 1:41 - 2:38	<b>5th period</b> 12:39 - 1:36		
<b>7th period</b> 2:43 - 3:40	<b>6th period</b> 1:41 - 2:38		
	<b>7th period</b> 2:43 - 3:40		

\*\*\* Off campus Option for grades 10, 11, and 12 is approved by weekly eligibility

Pep Rally Schedule	
Grades 10, 11, 12	Grades 7, 8, 9
<b>1st period</b> 7:55 - 8:45	<b>1st period</b> 7:55 - 8:45
<b>2nd period</b> 8:50 - 9:40	<b>2nd period</b> 8:50 - 9:40
<b>3rd period</b> 9:45 - 10:35	<b>3rd period</b> 9:45 - 10:35
<b>4th period</b> 10:40 - 11:30	<b>LUNCH</b> 10:40 - 11:10
<b>LUNCH</b> 11:35 - 12:05	<b>4th period</b> 11:15 - 12:05
<b>5th period</b> 12:10 - 1:00	<b>5th period</b> 12:10 - 1:00
<b>6th period</b> 1:05 - 1:55	<b>6th period</b> 1:05 - 1:55
<b>7th period</b> 2:00 - 2:50	<b>7th period</b> 2:00 - 2:50
<b>Pep Rally</b>	3:00 - 3:40

Late Start Bell Schedule	
Grades 10, 11, 12	Grades 7, 8, 9
<b>1st period</b> 9:55 - 10:35	<b>1st period</b> 9:55 - 10:35
<b>2nd period</b> 10:40 - 11:20	<b>2nd period</b> 10:40 - 11:20
<b>3rd period</b> 11:25 - 12:05	<b>3rd period</b> 11:25 - 12:05
<b>4th period</b> 12:10 - 12:50	<b>LUNCH</b> 12:10 - 12:40
<b>LUNCH</b> 12:55 - 1:25	<b>4th period</b> 12:45 - 1:25
<b>5th period</b> 1:30 - 2:10	<b>5th period</b> 1:30 - 2:10
<b>6th period</b> 2:15 - 2:55	<b>6th period</b> 2:15 - 2:55
<b>7th period</b> 3:00 - 3:40	<b>7th period</b> 3:00 - 3:40

# Page High School FINAL EXAM SCHEDULE

Semester 1: December 15 - 18, 2025 Semester 2: May 18 - 21, 2026

MONDAY		TUESDAY		WEDNESDAY		THURSDAY	
<b>1st pd exam</b>	<b>7:55 - 9:30</b>	<b>3rd pd exam</b>	<b>7:55 - 9:30</b>	<b>5th pd exam</b>	<b>7:55 - 9:30</b>	<b>7th pd exam</b>	<b>7:55 - 9:30</b>
3rd pd	9:35 - 10:15	1st pd	9:35 - 10:15	1st pd	9:35 - 10:15	1st pd	9:35 - 10:05
4th pd	10:20 - 11:00	2nd pd	10:20 - 11:00	2nd pd	10:20 - 11:00	2nd pd	10:10 - 10:40
5th pd	11:05 - 11:45	5th pd	11:05 - 11:45	3rd pd	11:05 - 11:45	3rd pd	10:45 - 11:15
<b>LUNCH</b>	<b>11:50 - 12:30</b>	<b>LUNCH</b>	<b>11:50 - 12:30</b>	<b>LUNCH</b>	<b>11:50 - 12:30</b>	<b>LUNCH</b>	<b>11:20 - 12:00</b>
<b>2nd pd exam</b>	<b>12:35 - 2:10</b>	<b>4th pd exam</b>	<b>12:35 - 2:10</b>	<b>6th pd exam</b>	<b>12:35 - 2:10</b>	4th pd	12:05 - 12:35
6th pd	2:15 - 2:55	6th pd	2:15 - 2:55	4th pd	2:15 - 2:55	5th pd	12:40 - 1:10
7th pd	3:00 - 3:40	7th pd	3:00 - 3:40	7th pd	3:00 - 3:40	6th pd	1:15 - 1:45
						<b>CAB</b>	<b>1:50 - 3:40</b>

Disclaimer: it is intended that all

Unified School District. In the event that anything in this handbook conflicts with current district policy, district policy will prevail.

the Governing Board of the Page

# 2025-2026 PHS CALENDAR

## 2025 - 2026

July 2025						
Su	Mo	Tu	We	Th	Fr	Sa
		1	2	3	4	5
6	7	8	9	10	11	12
13	14	15	16	17	18	19
20	21	22	23	24	25	26
27	28	29	30	31		
30						

August 2025						
Su	Mo	Tu	We	Th	Fr	Sa
					1	2
3	4	5	6	7	8	9
10	11	12	13	14	15	16
17	18	19	20	21	22	23
24	25	26	27	28	29	30
31						

September 2025						
Su	Mo	Tu	We	Th	Fr	Sa
	1	2	3	4	5	6
7	8	9	10	11	12	13
14	15	16	17	18	19	20
21	22	23	24	25	26	27
28	29	30				

October 2025						
Su	Mo	Tu	We	Th	Fr	Sa
			1	2	3	4
5	6	7	8	9	10	11
12	13	14	15	16	17	18
19	20	21	22	23	24	25
26	27	28	29	30	31	

November 2025						
Su	Mo	Tu	We	Th	Fr	Sa
						1
2	3	4	5	6	7	8
9	10	11	12	13	14	15
16	17	18	19	20	21	22
23	24	25	26	27	28	29
30						

December 2025						
Su	Mo	Tu	We	Th	Fr	Sa
	1	2	3	4	5	6
7	8	9	10	11	12	13
14	15	16	17	18	19	20
21	22	23	24	25	26	27
28	29	30	31			

- 1st & Last day of School
- New Teachers
- Returning Teachers
- Professional Development
- Parent Tchr Conf Week
- No School
- Graduation

APPROVED BY THE GOVERNING BOARD

### Holidays - No School

- Sept 1, 2025 - Labor Day
- Nov 10, 2025 - Veterans Day **Observed**
- Nov 24th - 27th - Thanksgiving Break
- Dec 22nd - Jan 1, 2026 - Winter Break
- Jan 19th - Martin Luther King Day
- Feb 16th - Presidents Day
- Mar 16th - 19th - Spring Break
- May 25th - Memorial Day

### DATES

- July 31, 2025- Meet the Teachers / Open Hs
- July 28, 29 or 30th? HS-Freshman Orientation
- 8-4-25- Students 1st Day
- TBD HS AVID Contract Sign Party
- TBD LV Family Partnership
- TBD DV Family Night
- TBD HS College & Career Fair
- TBD MS AVID Parent Night
- Dec 2025- MMHS Graduation
- TBD Incoming 9th Gd Prnt Night
- TBD DV Family Night
- TBD Family Partnership Experience
- TBD Sand Devil Showcase
- TBD 2nd & 3rd Gd Transition Night
- TBD MS AVID College Night
- TBD HS AVID Banquet
- TBD Incoming 6th Grd Parent Night
- May 2026- MMHS Graduation
- May 26, 2026- HS Graduation

January 2026						
Su	Mo	Tu	We	Th	Fr	Sa
				1	2	3
4	5	6	7	8	9	10
11	12	13	14	15	16	17
18	19	20	21	22	23	24
25	26	27	28	29	30	31

February 2026						
Su	Mo	Tu	We	Th	Fr	Sa
1	2	3	4	5	6	7
8	9	10	11	12	13	14
15	16	17	18	19	20	21
22	23	24	25	26	27	28

March 2026						
Su	Mo	Tu	We	Th	Fr	Sa
1	2	3	4	5	6	7
8	9	10	11	12	13	14
15	16	17	18	19	20	21
22	23	24	25	26	27	28
29	30	31				

April 2026						
Su	Mo	Tu	We	Th	Fr	Sa
			1	2	3	4
5	6	7	8	9	10	11
12	13	14	15	16	17	18
19	20	21	22	23	24	25
26	27	28	29	30		

May 2026						
Su	Mo	Tu	We	Th	Fr	Sa
						1
2	3	4	5	6	7	8
9	10	11	12	13	14	15
16	17	18	19	20	21	22
23	24	25	26	27	28	29
30						

June 2026						
Su	Mo	Tu	We	Th	Fr	Sa
	1	2	3	4	5	6
7	8	9	10	11	12	13
14	15	16	17	18	19	20
21	22	23	24	25	26	27
28	29	30				
						Summer School

1st Semester 74  
 2nd Semester 74  
 Tot Schl Days 148

1sem-through Oct 9th 39  
 2sem-through Mar 12th 38  
 1sem-through Dec 18th 35  
 2sem-through May 21st 36

Possible Make up Day due to Bad Weather ??????? Revised 1-28-25

Disclaimer: it is intended that all Page Unified School District handbooks comply with the policies established by the Governing Board of the Page Unified School District. In the event that anything in this handbook conflicts with current district policy, district policy will prevail.

## 2025-2026 Calendar

July 2025	
Independence Day	Thursday, July 4
Back to School Welcome Event 4 - 8 pm; Sand Devil Stadium	Tuesday, July 29
Teacher In-service Days (July 24-August 1)	Monday, July 28 - Thursday, July 31
Open House 1-4 pm	Thursday, July 31
Schedule Pick-up	Monday, July 21
August 2025	
Freshman Launch;	Monday, August 4
Classes Begin	Monday, August 4
AVID Signing Night	Wednesday, August 21
After-school Programming begins	Monday, August 25
September 2025	
Labor Day - No School	Sunday, September 1
Parent Teacher Conferences (5 - 7 pm)	Thursday, September 18
Parent Teacher Conferences (8:00 am - 12:00 pm)	Friday, September 19
ACT National Test	Saturday, September 6
ASVAB Testing	Tuesday, September 30
October 2025	
Homecoming Week	October 20 - 23
Arizona College Consortium	Monday, October 13
ACT National Test	Saturday, October 18
November 2025	
Civics Test Grades 11 & 12	Anticipated Tuesday, October 7
Veteran's Day - No School	Tuesday, November 11
Well Devil's Day	Wednesday, November 19
Thanksgiving Break	Monday - Thursday November 24 - 27
December 2025	
SY 26/27 Registration (all grades)	December 1 - 18
ACT National Test	Saturday, December 13
Semester 1 Final Exams	December 15 - December 18
Winter Break	December 22 - January 1

First Semester/Important Dates

*Disclaimer: it is intended that all Page Unified School District handbooks comply with the policies established by the Governing Board of the Page Unified School District. In the event that anything in this handbook conflicts with current district policy, district policy will prevail.*

<b>Second Semester/Important Dates</b>	<b>January 2026</b>	
	Classes Begin	Sunday, January 5
	Martin Luther King Jr. Day - No School	Sunday, January 19
	ACT Pre-Assessment	Tuesday, January 28
	After-school programming begins	
	<b>February 2026</b>	
	President's Day - No School	Sunday, February 16
	ACT National Test	Friday, February 14
	Parent/Teacher Conference (5 -7 pm)	Sunday, February 23
	Parent Teacher Conferences (8:00 am - 12:00 pm)	Thursday, February 27
	<b>March 2026</b>	
	Civics Test - Grades 11 & 12	Anticipated Wednesday, March 4
	ASVAB Testing	Monday, March 3
	Spring College & Career Fair	Monday, March 31
	Spring Break	March 16 - 19
	AZSci - Arizona Science Test (Grades 8 & 11)	Anticipated, Wednesday, March 25
	<b>April 2026</b>	
	ACT/Pre-ACT 10/ ACT Aspire	Anticipated Wednesday, April 1
	AASA	Anticipated March 31 and April 1
	ACT National Test Day	Friday, April 11
	Prom	Anticipated Friday, April 24
	After-school programming ends	
	<b>May 2026</b>	
	Senior Finals Week	May 18 - May 21
	Senior Awards Ceremony	Tuesday, May 19
	Page High School Graduation	Thursday, May 21
	End-of-year Awards Ceremony (grades 9 - 11)	Thursday, May 21
	Semester 2 Finals Week	May 18 - 21
Last Day of School	Thursday, May 21	

<b>Page High School Athletic Seasons</b>			
Grades 9-12		Grades 7-8	
Football	July 28, 2025		
Cheer	August 4, 2025	Football	August 4, 2025
Cross Country			
Musical		Cross Country	
Marching Band			
Flag Football	August 11, 2025	Soccer	September 29, 2025
Golf		Volleyball	
Volleyball		Wrestling	
Basketball	November 3, 2025	Basketball	January 5, 2025
Soccer			
Wrestling			
Cheer			
Baseball	February 3, 2025	Baseball	February 23, 2025
Softball		Softball	
Track & Field		Track & Field	
Tennis			

*Disclaimer: it is intended that all Page Unified School District handbooks comply with the policies established by the Governing Board of the Page Unified School District. In the event that anything in this handbook conflicts with current district policy, district policy will prevail.*

# Section 1



## ACADEMIC INFORMATION

### **Honor Roll**

Page High School honor roll consists of three levels:

- Principal's Honors – 4.0 awarded a black/red medallion at end of the school year
- High Honors – 3.5 awarded a black medallion at end of the school year
- Honors – 3.25 awarded a red medallion at end of the school year

GPA is calculated each semester for determination. A student cannot have an "F" and must be enrolled as a full-time student.

### **Grading Scale**

A	100-90%	4.0
B	89-80%	3.0
C	79-70%	2.0
D	69-60%	1.0
F	59-0%	0.0

### **The Top 10% of the Graduating Class**

Graduating seniors who are in the top 10% of their class based on their GPA through the final seven semesters of their high school career and graduating with their cohort will be awarded a gold cord.

### **National Honor Society Membership**

Sophomores, juniors, and seniors with a 3.75 cumulative GPA are eligible for membership in the National Honor Society (NHS) as juniors and seniors. To be a member in good standing, all eligible students must maintain a 3.75 GPA, attend the required number of NHS yearly meetings, perform 17 hours of community service, and uphold standards in character and leadership during the school year. Incidents of cheating and plagiarism could be grounds for non-admittance or removal.

### **Academic Lettering**

For the letter, students must meet the following criteria:

- ❖ A transcript with at least three semesters of on-grade academic work with a cumulative GPA of 3.5 or higher with no grade below a C.
- ❖ Enrollment in a minimum of seven classes each year, with no more than one instructional aide class.

Students should note the following considerations:

- ❖ Students receive an academic letter for the first year of qualification.
- ❖ In the years following receipt of the academic letter, students qualify for academic bars if they continue to meet the requirements for the initial letter.

*Disclaimer: it is intended that all Page Unified School District handbooks comply with the policies established by the Governing Board of the Page Unified School District. In the event that anything in this handbook conflicts with current district policy, district policy will prevail.*

- ❖ Letters and bars will be awarded during the academic awards assembly with recognition in local media.

### **Transfer Credit Formula**

Students who earned credit from another accredited institution that has more/less credits per year and more/less graduation credit requirements, may apply the district adopted formula to adjust graduation requirements at Page High School. **The formula is utilized for graduation purposes only.** Details are located in the Page High School Academic Guidelines and Course Offerings Handbook.

### **Online Learning**

Students interested in distance learning or transferring credits should follow guidelines provided in the Page High School Academic Guidelines and Course Offerings Handbook.

### **Gifted Education**

"Gifted" means a child who is of lawful school age, who due to superior intellect or advanced learning ability, or both, is not afforded an opportunity for otherwise attainable progress and development in regular classroom instruction and needs special instruction or special ancillary services, or both, to achieve at levels commensurate with the child's intellect and ability. Arizona Revised Statutes Article 4.1, 15-799.

Page Unified School District administers state approved tests for grades k-12 given throughout the school year. Students who score at or above the 97th percentile on national norms in any one of the three areas—verbal, quantitative, or non-verbal will be served. Students can only test once every 12 months. Students themselves, parents, teachers, and administrators may nominate students for gifted testing. Contact the Gifted office for further information, (928) 608-4386.

### **Special Education and English Language Learners**

Special Education students and English Language Learners will be referred to the school's intervention teams. The principal will have the authority to make exceptions to this policy.

### **State Assessments**

In the spring of 2026, students will be administered the following state assessments. These assessments are not a graduation requirement.

11<sup>th</sup> grade – ACT and AZSci

9<sup>th</sup> grade – ACT Aspire

8<sup>th</sup> grade – AASA, AZSci, AZ Civics

7<sup>th</sup> grade - AASA

## **Pre-ACT**

10th grade will take the PreACT for data and to prepare them for the ACT.

## **AZ Civics**

Beginning with the 2026 cohort, students are required to take and pass the Civics Exam, with a score of 70% or higher, to receive a high school diploma.

## **Schedule Changes**

When a student's schedule is changed the school will contact the parent or guardian and inform them of the schedule change.

Please see the Counseling Department in regard to deadlines.

## **Testing out of a Class**

Students have a right to petition to test out of a class for credit with the permission of the principal. Students must test mastery on all competencies listed for the class as defined by the course and state standards. A credit, not a grade, will be issued in this situation.

## **Dropping a Class**

To drop a course, a student must meet with a counselor within the first two weeks of the semester. After the two-week deadline, a Late Class Change Form must be submitted prior to any consideration for changes and drops. The principal will have final approval. Extenuating circumstances will be considered on an individual basis. Generally, class changes will not be accepted after the fourth (4th) week of the semester. With regard to athletic eligibility, if at any point a student drops a class and the grade at the time of the drop is an F, such student will remain academically ineligible for the remainder of the eligibility period or until grade is passing.

## **Release Time**

Release time is a scheduled period for students who wish to attend instruction off Page High School campus or for seniors who are on track to graduate. Generally, students are allowed one (1) release period per day (this includes Release to Catechism, Seminary, College, and Other). "Release Time (Other)" is available only to 12<sup>th</sup> grade students on track to graduate.

Students on release time must leave campus or congregate in the library for studying, unless a scheduled appointment is made with a teacher in advance. Students utilizing the library during release time must remain in the library for the entirety of the release period. Students are not allowed in and out privileges due to the disruptive nature.

## **Retention**

Any retention decision may be appealed to the governing board, as per policy.

*Disclaimer: it is intended that all Page Unified School District handbooks comply with the policies established by the Governing Board of the Page Unified School District. In the event that anything in this handbook conflicts with current district policy, district policy will prevail.*

# Section 11



## **PAGE UNIFIED SCHOOL DISTRICT SECONDARY STUDENT CODE OF CONDUCT**

School is a place to learn and to be a part of a community. It is every student and staff members' responsibility to ensure a positive learning environment is afforded to everyone. If a student is behaving in a way that does not allow other students to learn, school staff will need to intervene with the student. Students, whether receiving general or special education services, may need to receive interventions for disruptive behavior. Acts of misconduct are subject to disciplinary action by appropriate school personnel. Unacceptable conduct is defined as when a student engages in conduct that is disorderly, i.e., intentionally causing public inconvenience, annoyance, or alarm, or recklessly creating a risk thereof that does or has the potential to disrupt the educational process.

### **SCHOOL DISTRICT AUTHORITY AND JURISDICTION**

The provisions in the Student Code of Conduct are in effect:

- On the way to and from school or a school related event
- During regular school hours and/or on any school property
- During transportation of students
- At times and places where appropriate school administrators and staff have jurisdiction including, but not limited to, school-sponsored events, field trips, athletic events, and other school related activities

Additionally, the principal, or designee is authorized to take administrative disciplinary action when a student's conduct away from school may have a detrimental effect on the student, students, staff or the educational process.

The principal, or designee, has the responsibility to take discretionary action anytime the educational process is threatened with disruption. Nothing in the following is intended to prevent a staff member, teacher, principal, or other administrator from using their best judgment with respect to a particular situation.

### **PAGE UNIFIED SCHOOL DISTRICT APPROACH TO DISCIPLINE**

In order to have a holistic approach to student conduct, Page Unified School District implements the use of Positive Behavioral Interventions and Supports (PBIS), traditional discipline practices, and restorative practices. Positive

*Disclaimer: it is intended that all Page Unified School District handbooks comply with the policies established by the Governing Board of the Page Unified School District. In the event that anything in this handbook conflicts with current district policy, district policy will prevail.*

Behavioral Interventions and Supports (PBIS) is an approach schools use to promote school safety and good behavior. With PBIS, schools teach kids about behavior expectations and strategies. The focus of PBIS is prevention, not punishment. Traditional discipline practices give students an appropriate and progressive consequence for their actions which are against the student code of conduct. Restorative practices focus on building, maintaining, and when necessary, repairing relationships among all members of the school community. The restorative approach is a set of guiding principles including respect, relationships, responsibility, repair, and reintegration practices for the school community. Restorative practices give priority to repairing harm done to individuals and school communities and providing student accountability by assuming responsibility and taking action to repair the harm they caused. Page Unified School District utilizes restorative practices as a method of attempting to restore damaged relationships and to educate students. Restorative practices generally take place after a student has been administered and served a consequence for violating the code of conduct.

By using the three systems of PBIS, traditional discipline and restorative practices, Page Unified School District can actively prevent, respond and repair harm done to the learning environment. These three systems live in connection with one another and one alone cannot effectively work in isolation.

## **STUDENT RIGHTS AND RESPONSIBILITIES**

### **Students' rights**

Students have the right to a quality education in a clean, safe environment. Page High School prides itself in the diversity and quality of learning opportunities available to students that provides students a comfortable place to advance their education while maintaining a mutual respect for the rights of others.

### **DISTRICT POLICY ACCESS**

All Page Unified School District policies are available for public access at [www.azsba.org](http://www.azsba.org). Once you are at the site choose the following steps:

- Hover over the "POLICY" tab.
- Click "Policybridge."
- Under "View school district policies on policybridge," click PolicyBridge."
- Scroll down the left menu to "Page Unified School District No. 8."
- Open the arrow next to "Page Unified School District No. 8."

Determine which section is applicable to the desirable information.

*Disclaimer: it is intended that all Page Unified School District handbooks comply with the policies established by the Governing Board of the Page Unified School District. In the event that anything in this handbook conflicts with current district policy, district policy will prevail.*

## **Rights under Due Process**

Due process is the students' right to be clearly informed about any rules for which they will be held accountable, to be informed of any charges which may be made against them, and to ask for consideration of special circumstances. It is also the students' right to appeal a disciplinary action taken against them by the school.

Students may appeal a disciplinary decision in writing to the principal or designee. The principal is the final level of appeal for any disciplinary decision involving restriction of privileges, restitution, disqualification of tests or assignments, A.S.D., suspension of bus privileges, or short-term suspensions (10 days or less).

All students have the right to a free and appropriate education. If students find themselves in the unfortunate position of losing that right, they are entitled to due process. Due process means school officials must follow certain procedures before taking appropriate disciplinary action. Students must also follow certain procedures if they do not agree with the actions of the school.

If students become involved in situations in which a suspension or expulsion may result, both the students and their parents should be aware of due process rights.

## **Student Concerns, Complaints, and Grievances**

A student may present a complaint or grievance regarding one or more of the following:

- Violation of the student's constitutional rights.
- Denial of an equal opportunity to participate in any program or activity for which the student qualifies.
- Discriminatory treatment on the basis of race, color, religion, sex, age, national origin, or disability.
- Harassment of the student by another person.
- Concern for the student's personal safety.

Provided that:

- The topic is not the subject of disciplinary or other proceedings under other policies and regulations of this District, and
- The procedure shall not apply to any matter for which the method of review is prescribed by law, or the Governing Board is without authority to act.

The guidelines to be followed are:

- The accusation must be made within thirty (30) calendar days of the time the student knew or should have known that there were grounds for the complaint/grievance.
- The complaint/grievance shall be made only to a school administrator or professional staff member.

- The person receiving the complaint will gather information for the complaint form.
- All allegations shall be reported on forms with the necessary particulars as determined by the Superintendent. *Forms are available in the school office.*
- The person receiving the complaint shall preserve the confidentiality of the subject, disclose it only to the appropriate school administrator or next higher administrative supervisor or as otherwise required by law.

Refer to Board Policy JII-EB for further information.

### **Student Interrogations, Searches, and Arrests Policy JIH & Interviews**

Arizona State Statutes permit great latitude in investigation of child abuse and abandonment by The Department of Child Services (DCS) and peace officers (PO). This latitude includes interviewing the child, siblings and others who live with the child, in the school setting, without parent/guardian, or school personnel present and, if necessary, taking the child or children into temporary custody.

When a student is taken into protective (temporary) custody on campus by law enforcement (DCS or PO), it is the responsibility of the school to request the identification and the authority of the person taking the student into custody. If the person refuses to respond with the proper information, it would be appropriate for the school to call local law enforcement officials with whom they may be familiar. It is the responsibility of the school to establish the identity of any person taking custody of a child from the school.

In instances that do not involve child abuse or abandonment, or in circumstances other than abuse and abandonment where law enforcement enters the campus intending to interview a student without a search warrant, subpoena or probable cause to arrest the child and not at the request of the school, the school will make a reasonable effort to contact the parent(s)/guardian.

School officials are not required to comply with unconditional demands from parents for prior notice of, or consent to, police or discipline interviews of a student. This issue may appropriately be addressed in school policies.

School officials may question students regarding matters related to school without limitation. The parent will be contacted if a student interviewed is then subject to discipline for a serious offense.

### **Law Enforcement Invited on Campus**

For the safety and protection of other students in the custodial environment, the school has authority to permit investigatory interviews without contacting the parent. Law enforcement would also be called due to the requirements of statute for reporting criminal activity, weapons, drugs and other

serious incidents. If public safety or the safety of other students is in question, there shall be no requirement to notify parents of the interview.

School Safety Officer (SSO) interviews and actions require different analysis. The SSO is on school campus by agreement with a law enforcement agency. In general, the SSO falls under an invited peace officer because the school has requested the presence of the officer due to concern for the continued safety of students. A student may decline at any time to be interviewed by the School Safety Officer (SSO) or another peace officer.

If DCS or a peace officer enters the campus to interview a student attending the school, the school administrator will be notified. Parents will be contacted and will be asked if they wish the student to be interviewed, except in the instance related to criminal activity on the part of the parent/guardian or incidents of abuse or abandonment.

### **Searches**

School officials have the right to search and seize property, including school property temporarily assigned to students, when there is reason to believe that some material or matter detrimental to the health, safety, and welfare of the student(s) exists. Disrobing of a student is overly intrusive for purposes of most student searches and is improper without express concurrence from district counsel.

Items provided by the District for storage (e.g., lockers, desks) or personal items are provided as a convenience to the student but remain the property of the school and are subject to its control and supervision. Students have no reasonable expectation of privacy, and lockers, desks, storage areas, etc., may be inspected at any time with or without reason, or with or without notice, by school personnel.

As a component of the District's program to provide a safe environment for students, staff, and visitors, the District may, in conjunction with the Page Police Department or other law enforcement agency, use specially trained canines to conduct searches for contraband, controlled, illegal, or dangerous items.

The following protocols will be followed for conducting a canine search:

- A search may encompass any District property or facility including, but not limited to, student lockers and student parking lots as well as unattended student property. No student will be subjected to a search of this or her person unless the school administrator has a reasonable suspicion that the student has contraband, illegal, controlled, or dangerous items.
- Random classroom searches may be conducted. Students will be directed to leave personal belongings behind and exit the classroom. The search dog will survey the empty classroom and personal belongings left by students.
- Searches will be conducted only in presence of school personnel.

### **Privacy Rights**

*Disclaimer: it is intended that all Page Unified School District handbooks comply with the policies established by the Governing Board of the Page Unified School District. In the event that anything in this handbook conflicts with current district policy, district policy will prevail.*

Students possess the right of privacy of person as well as the freedom from unreasonable search and seizure of property. This right, however, is balanced by the school's responsibility to protect the health, safety and welfare of all students. School employees may conduct searches when they have reason to suspect that the health, safety, or welfare of students may be in danger.

Any school employee making a search or a seizure will follow these guidelines:

1. General searches of school property (including personal items found in or on school property) may be conducted at any time when there is reason to believe that a violation of a law or school rule has occurred on school property. **This search of school property may be made without the student present.**
2. School officials may seize illegal items, such as firearms, explosive devices, weapons, drugs, or other possessions reasonably determined to cause or possibly cause a threat to the safety and security of others—or to cause or possibly cause an interference with school activities.
3. Items, which are used to disrupt or interfere with the educational process, may be removed from a student's person.
4. A student's person may be searched by school employees when there is reason to believe that the student has, on his/her person, illegal items or other items that may interfere with school purposes.
5. The school maintains ownership of student lockers. The school may and will search student lockers on a periodic basis to protect the health, safety and welfare of all students.
6. School employees may search motor vehicles parked on school property when there is reason to believe the health, safety or welfare of students might be in jeopardy.
7. In the interest of student health, safety, and welfare the school may and will use dogs trained in the detection of illegal drugs, explosives, and incendiary devices. The dogs will be used to check lockers, vehicles in any school parking lot, and other items on any school property and/or school event.

### **Arrest**

Should a police officer express the intent to take a student into custody, the school personnel should cooperate with the officer to locate and provide access to the student. A police officer may take a juvenile into temporary custody for incorrigibility, a felony, a breach of peace, or as a runaway in accord with A.R.S. 8-303. Additionally, should the officer have a warrant or a subpoena, the officer should be provided immediate access to the student upon proper identification. It is appropriate to ascertain the identity and authority of the officer, requesting a signature on the "arresting officer" form as necessary.

# Section III



## PAGE UNIFIED SCHOOL DISTRICT SECONDARY POLICIES AND PROCEDURES

### **Incidents of Abuse**

Page Unified School District policy is to protect children from abuse no matter who inflicts it. PUSD teachers and staff will report suspected incidents of abuse. "Any person who causes a child...to suffer physical injury or abuse" where the injury was inflicted intentionally, knowingly, recklessly, or with criminal negligence is guilty of abuse (ARS 13-3623(B)).

Page Unified School District has designated coordinators for communication of suspected abuse. If you are a victim or suspect a victim in our school, please contact your school counselor or principal.

### **Report Bullying**

Page Unified School District utilizes an anonymous reporting system which can be accessed through StopIt Anonymous Reporting System (App) on a mobile device or school issued technology: The StopIt Anonymous Reporting System supports and empowers Page Unified School District's students to anonymously report issues (i.e, bullying, violence, self-harm) before they escalate. This reporting app provides anonymous 2-way dialogue between reporters and administrators. Utilize the website, stopitsolutions.com or download the app STOPit to anonymously report bullying, violence, or self-harm. Each secondary school has its own access code.

Any student who witnesses or is included in an incident of bullying, harassment or other forms of intimidation is expected to help in stopping, minimizing, or eliminating the act. Failure to intervene may result in disciplinary action. Students who receive acts or words of harassment, bullying or intimidation should immediately leave the location and report the act or behavior to a trusted PHS staff member, counselor, dean, or administrator.

Each incident will be investigated and Page High School will implement the necessary safeguards and or consequences to eliminate recurrence. Anonymity and confidentiality can and will be maintained throughout the process.

### **PUSD District Policies JICK-EB & JICFA-EB**

#### **JICK-EB © STUDENT BULLYING / HARASSMENT /INTIMIDATION**

The Governing Board of the Page Unified School District believes it is the right of every student to be educated in a positive, safe, caring, and respectful learning environment. The Governing Board further believes a school environment that is inclusive of these traits maximizes student achievement, fosters student personal growth, and helps a student build a sense of community that promotes positive participation as citizens in society.

*Disclaimer: it is intended that all Page Unified School District handbooks comply with the policies established by the Governing Board of the Page Unified School District. In the event that anything in this handbook conflicts with current district policy, district policy will prevail.*

To assist in achieving a school environment based on the beliefs of the Governing Board, bullying, harassment, or intimidation in any form will not be tolerated.

*Bullying:* Bullying may occur when a student or group of students engages in any form of behavior that includes such acts as intimidation and/or harassment that

A. has the effect of physically harming a student, damaging a student's property, or placing a student in reasonable fear of harm or damage to property,

B. is sufficiently severe, persistent or pervasive that the action, behavior, or threat creates an intimidating, threatening, or abusive environment in the form of physical or emotional harm,

C. occurs when there is a real or perceived imbalance of power or strength, or

D. may constitute a violation of law.

Bullying of a student or group of students can be manifested through written, verbal, physical, or emotional means and may occur in a variety of forms including, but not limited to

A. verbal, written/printed or graphic exposure to derogatory comments, extortion, exploitation, name calling, or rumor spreading either directly through another person or group or through cyberbullying,

B. exposure to social exclusion or ostracism,

C. physical contact including but not limited to pushing, hitting, kicking, shoving, or spitting, and

D. damage to or theft of personal property.

*Cyberbullying:* Cyberbullying is, but not limited to, any act of bullying committed by use of electronic technology or electronic communication devices, including telephonic devices, social networking and other Internet communications, on school computers, networks, forums and mailing lists, or other District-owned property, and by means of an individual's personal electronic media and equipment.

*Harassment:* Harassment is intentional behavior by a student or group of students that is disturbing or threatening to another student or group of students. Intentional behaviors that characterize harassment include, but are not limited to, stalking, hazing, social exclusion, name calling, unwanted physical contact and unwelcome verbal or written comments, photographs and graphics. Harassment may be related, but not limited to, race, religious orientation, sexual orientation, cultural background, economic status, size or personal appearance. Harassing behaviors can be direct or indirect and by use of social media.

*Intimidation:* Intimidation is intentional behavior by a student or group of students that places another student or group of students in fear of harm of person or property. Intimidation can be manifested emotionally or physically, either directly or indirectly, and by use of social media.

Students are prohibited from bullying, harassment, or intimidation on school grounds, school property, school buses, at school bus stops, at school-sponsored events and activities, and through the use of electronic technology or electronic communication equipment on school computers, networks, forums, or mailing lists.

Disciplinary action may result for bullying, harassment, or intimidation which occurs outside of the school and the school day when such acts result in a substantial physical, mental, or emotional negative effect on the victim, while on school grounds, school property, school buses, at school bus stops, or at school-sponsored events and activities, or when such act(s) interfere with the authority of the school system to maintain order. All suspected violations of law will be reported to local law enforcement.

*Disclaimer: it is intended that all Page Unified School District handbooks comply with the policies established by the Governing Board of the Page Unified School District. In the event that anything in this handbook conflicts with current district policy, district policy will prevail.*

Students who believe they are experiencing being bullied, harassed, or intimidated or suspect another student is bullied, harassed, or intimidated should report their concern to any staff member of the School District. School personnel are to maintain appropriate confidentiality of the reported information.

Reprisal by any student directed toward a student or employee related to the reporting of a case or a suspected case of bullying, harassment, or intimidation shall not be tolerated, and the individual(s) will be subject to the disciplines set out in applicable District policies and administrative regulations.

Students found to be bullying, harassing, or intimidating others will be disciplined up to and including suspension or expulsion from school.

Knowingly submitting a false report under Policy JICK or this exhibit shall subject the student to discipline up to and including suspension or expulsion. Where disciplinary action is necessary pursuant to any part of Policy JICK or this exhibit, relevant District policies shall be followed.

Law enforcement authorities shall be notified any time District officials have a reasonable belief that an incidence of bullying, harassment, or intimidation is a violation of the law.

## **JICFA-EB © HAZING**

There shall be no hazing, solicitation to engage in hazing, or aiding and abetting another who is engaged in hazing of any person enrolled, accepted for or promoted to enrollment, or intending to enroll or be promoted to schools within twelve (12) calendar months. For purposes of this policy a person as specified above shall be considered a "student" until graduation, transfer, promotion or withdrawal from the school.

### **Definitions**

"Hazing" means any intentional, knowing or reckless act committed by a student, whether individually or in concert with other persons, against another student and in which both of the following apply:

A. The act was committed in connection with an initiation into, an affiliation with or the maintenance of membership in any organization that is affiliated with an educational institution.

B. The act contributes to a substantial risk of potential physical injury, mental harm or degradation, or causes physical injury, mental harm or personal degradation.

"Organization" means an athletic team, association, order, society, corps, cooperative, club, or similar group that is affiliated with an educational institution and whose membership consists primarily of students enrolled at that educational institution.

### **Directions**

It is no defense to a violation of this policy if the victim consented or acquiesced to hazing.

In accord with statute, violations of this policy do not include either of the following:

A. Customary athletic events, contests or competitions that are sponsored by an educational institution.

B. Any activity or conduct that furthers the goals of a legitimate educational curriculum, a legitimate extracurricular program or a legitimate military training program.

All students, teachers and staff shall take reasonable measures within the scope of their individual authority to prevent violations of this policy.

### **Reporting/Complaint Procedure**

Students and others may report hazing to any professional staff member. Professional staff members must report the incident to the school administrator or next higher administrative supervisor, in writing, with such details as may have been provided. A failure by a staff member to timely inform the school administrator or next higher administrative supervisor of a hazing allegation or their observation of an incident of hazing may subject the staff member to disciplinary action in accord with school policies. The staff member shall preserve the confidentiality of those involved, disclosing the incident only to the appropriate school administrator or next higher administrative supervisor or as otherwise required by law. Any instance of reported or observed hazing which includes possible child abuse or violations of statutes known to the staff member shall be treated in accord with statutory requirements and be reported to a law enforcement agency.

A person who complains or reports regarding hazing may complain or report directly to the school administrator or to a professional staff member. The professional staff member receiving the report/complaint shall retrieve sufficient detail from the person to complete the form designated for such purpose. At a minimum the report/complaint shall be put in writing containing the identifying information on the complainant and such specificity of names, places and times as to permit an investigation to be carried out. When a professional staff member receives the information, the staff member will transmit a report to the school administrator or supervising administrator not later than the next school day following the day the staff member receives the report/complaint.

The report/complaint will be investigated by the school administrator or a supervising administrator. The procedures to be followed are:

A. An investigation of the reported incident or activity shall be made within ten (10) school days when school is in session or within fifteen (15) days during which the school offices are open for business when school is not in session. Extension of the time line may only be by necessity as determined by the Superintendent.

B. The investigator shall meet with the person who reported the incident at or before the end of the time period and shall discuss the conclusions and actions to be taken as a result of the investigation. Confidentiality of records and student information shall be observed in the process of making such a report.

C. The investigator shall prepare a written report of the findings and a copy of the report shall be provided to the Superintendent.

All violations of this policy shall be treated in accord with the appropriate procedures and penalties provided for in School policies related to the conduct and discipline of students, staff, and others.



*Disclaimer: it is intended that all Page Unified School District handbooks comply with the policies established by the Governing Board of the Page Unified School District. In the event that anything in this handbook conflicts with current district policy, district policy will prevail.*

## **ATTENDANCE POLICY**

Consistent attendance at school is essential for continued learning. Arizona Law charges the parent/guardian with the responsibility for the student's consistent school attendance (A.R.S. 15-802, 15-804, 15-805). Students must complete enough seat time in order to earn the correct credit for each class. If a student is absent more than the designated amount of time they will be required to attend after school programming in order to earn the time and credit back. If a student is absent more than the State accepted amount of time they are in danger of not receiving credit for a class which could endanger them from not graduating on time. It is the expectation of Page HS Administration and staff that all students are in attendance each school day.

Page High School will accomplish all it can to hold students accountable and to keep parents informed of student truancy through effective two-way communication. A parent/guardian should communicate with the school on or before the day a student must be absent. This communication will help the attendance office to accurately complete daily attendance counts and ensure that truancy is reported in a timely manner. When a student returns to school, following an absence, any written explanation from the parent/guardian, including a doctor's excuse, should be dropped off at the attendance desk; notes to explain a student's absence should include the day of the absence and a daytime phone number where the parent/guardian can be reached. For an illness keeping a student out of school more than 2 days, a doctor's excuse should be submitted to the attendance clerk.

Page High School complies with the Arizona Department of Education's ten-day drop rule. Please be advised that a student's enrollment will be dropped if he/she misses ten or more consecutive days without a valid excuse. The staff will re-enroll your child upon returning to school with a parent/guardian. Please be aware that dropping enrollment is not intended to be punitive; it is a legal accounting procedure the district is required to observe.

### **Attendance Definitions**

- Absences for K-8 Students - is defined as a student not being present in his/her assigned classroom during the assigned period or an elementary student missing 25% or more of the school day.
- Cumulative Absences - the total number of days or class periods missed in a school year.
- Consecutive Absences - series of days or class periods in a row when a student is absent.
- Truant - an unexcused absence for at least 25% of the day or one class period.
- Habitually truant - a child who is truant for at least five school days within a school year. (A.R.S. 15-803).

*Disclaimer: it is intended that all Page Unified School District handbooks comply with the policies established by the Governing Board of the Page Unified School District. In the event that anything in this handbook conflicts with current district policy, district policy will prevail.*

- Truant child - a child who is between six and sixteen years of age and who is not in attendance at a public or private school during the hours that school is in session, unless excused as provided by law.
- Excessive (Chronic) absenteeism - Absences may be considered excessive when the number of absent days exceeds ten percent of the number of required attendance days. (A.R.S., 15-803).
- Religious Purposes - Pursuant to A.R.S., 15-806(A) Students may be granted release time to attend religion classes near the school campus. Specific to religious purposes, pursuant to A.R.S. 15-806(A) (1-2), these conditions will include a written consent from the person who has legal custody of the student and said religious exercises must take place at a suitable place away from school property.
- Withdrawals - includes students formally withdrawn from schools and students absent for ten consecutive school days, except for excused absences as identified by the department of education. For computation purposes, the effective date of withdrawal shall be retroactive to the last day of actual attendance of the student.

### **Arranging for extended absence**

If a student will miss school for an extended period of time, which could lead to excessive absences, prior approval from the assistant principal will be required. The assistant principal will determine how the student's attendance will be marked as well as facilitate a plan with the family to ensure the absences do not adversely affect the student's education. An example might be an occasion when a family has planned travel that could cause a student to be absent for more than 9 school days.

### **Making-up missed work due to absence**

Students are expected to be in class unless an absence is unavoidable. Students who know in advance that they must miss a class should inform their teachers and get work prior to the absence. When an absence occurs without prior warning, students should see teachers as soon as possible after returning. If an absence is planned, work can be collected in the office for pick-up prior to the absence. Students will be expected to make-up ALL missed assignments/tests. The Day-For-A-Day policy will be in effect.

### **Signing out a student**

When signing out a student during the school day, a parent/guardian or designated emergency contact must be present with ID. This requires the parent/guardian or designated emergency contact to physically walk into the attendance office, show ID, and sign out the student. No over-the-phone sign outs will be allowed. The only exception to this procedure is if prior notice is given to the attendance clerk.

In order to meet the expectations for giving prior notice, the following procedure must be followed:	
<b>1</b>	Before 8:00, the student submits a note or parent calls 608-4135 to communicate the need for signing out to the attendance clerk.
<b>2</b>	Attendance clerk will issue the student a pass to use later in the school day to leave class.
<b>3</b>	Students will show the classroom teacher the pass in order to be released from class at allowed time.
<b>4</b>	Students will go to the attendance office to sign out and receive an off-campus pass.
<b>5</b>	On the next school day (or upon signing back in), the student should give the attendance clerk any documentation provided to excuse the time away from school.
<b>No sign outs will be allowed after 2:00 pm Monday, Tuesday, Wednesday and Thursday.</b>	

*Please update emergency contacts often. All updates to contact information should be made through the attendance clerk (608- 4135).*

### **Perfect Attendance**

Students who receive perfect attendance will be recognized each semester. Only school related business or activities are acceptable absences to qualify for perfect attendance.

### **Types of Absences**

A student's attendance will be marked in the following manner depending on the reason for the absence:

**Excused Absence(EXC):** An absence is legitimate under the following conditions:

- Individual illness or health conditions (documentation provided by medical doctor)
- Serious illness in the immediate family (documentation required)
- Religious holidays
- Religious purposes
- Verification provided by medicine man
- Medical or dental appointments \*\*\**appointments that are not scheduled on Fridays or after school* (documentation required)

### **Verified Absence (VER):**

When a student is absent, parents are required to call/send a note to the attendance department in order to validate the reason for your child's absence. We call this process "Absence Verification." Parents are

encouraged to call in on or prior to the day of the absence to make the school aware. An absence must be verified within three school days.

**Unverified Absences (UNV):**

Any absence for one or more class periods that has not been verified by a parent/guardian or excused.

**School-Related Absence**

- **(ONC) On-campus:** Pre-approved school related on campus activity/event. Absence will not count as an absence.
- **(ACT) Activity:** Pre-approved athletic or club event; student may be on or off campus. Absence will not count as an absence.

**Truant (TRU):**

An unexcused or unverified absence for one or more class period.



*Disclaimer: it is intended that all Page Unified School District handbooks comply with the policies established by the Governing Board of the Page Unified School District. In the event that anything in this handbook conflicts with current district policy, district policy will prevail.*

## Page High School Absence Intervention Chart

**Absence Count = UNV + TRU + VER (Does not include EXC, ACT, ONC)**

<b>1 - 3 Absences (in a class)</b>	<ul style="list-style-type: none"> <li>• SchoolMessenger will notify parent/guardian by phone/email for period and/or all-day absence.</li> <li>• Teacher will engage in a one-on-one check-in conversation with student about absences.</li> <li>• Student will obtain missing work from the content teacher per teacher's missing work/make-up policy and expectation.</li> </ul>
<b>4 - 5 Absences (in a class)</b>	<ul style="list-style-type: none"> <li>• 4-day Attendance Notification Letter (includes attendance print-out of record to date) will be sent home to parents/guardians, delivered to student.</li> <li>• Attendance Survey administered to gather information to determine the reason (root cause) for the absences and determine interventions.</li> <li>• The content teacher will contact parent/guardian about absences.</li> <li>• Student will be assessed, via phone call, by student liaison and/or a support services staff member to identify the reason (root cause) for the absences.</li> <li>• Student will participate in an Attendance Round-up meeting, during lunch.</li> <li>• Student will receive the opportunity to recover missed learning through after school intervention time in the accordance of the course plan for success.</li> </ul>
<b>6-7 Absences (in a class)</b>	<ul style="list-style-type: none"> <li>• 6-day Final Attendance Notification Letter (includes print-out of record to date) will be sent home to parents/guardians and delivered to student.</li> <li>• Student will be assessed, via home visit, by student liaison and/or a support services staff member to identify the reason (root cause) for the absences. (6 consecutive absences)</li> <li>• Student will participate in an Attendance Round-up meeting, during lunch.</li> <li>• Student will be assigned to after-school tutoring to recover missed learning through after school intervention time in the accordance of the course plan for success.</li> </ul>
<b>8 absences (in a class)</b>	<ul style="list-style-type: none"> <li>• 8-day attendance notification letter requiring an administrative conference will be sent to parents/guardians.</li> <li>• The student may be placed on an attendance contract and/or referred to a district attendance hearing to address the root cause of absenteeism. Documentation for absences need to be submitted by parent/guardian.</li> </ul>

*Disclaimer: it is intended that all Page Unified School District handbooks comply with the policies established by the Governing Board of the Page Unified School District. In the event that anything in this handbook conflicts with current district policy, district policy will prevail.*

	<ul style="list-style-type: none"> <li>• The Page City Attorney's office and/or Navajo National Peacemaking court will be contacted. Referral to Department of Family Services.</li> <li>• Parent/Guardian and student will meet with Assistant Principal/designee and support staff to write plan of action. School may facilitate a home visit to discuss absences with parents/guardians.</li> <li>• Student will complete a written reflection inclusive of solutions they propose for how to address their absences.</li> <li>• Student will be assigned to after-school tutoring to recover missed learning through after school intervention time in the accordance of the course plan for success.</li> </ul>
<b>9+ absences</b>	<ul style="list-style-type: none"> <li>• If a student continues to be chronically absent after all interventions have been implemented/exhausted, a follow-up conference with the Parent/Guardian, student and Assistant Principal/Designee will be held.</li> <li>• If attendance continues to create barriers to learning, consideration for a modified schedule or alternative learning environment will be implemented to allow the student to be successful. Alternative learning environments may include online learning options through Sage and Sand Academy or other Page Unified District schools.</li> <li>• At 12 excused/unexcused absences, in a course, a student may lose credit after documented interventions have been exhausted.</li> </ul>
<b>10 consecutive absences</b>	<ul style="list-style-type: none"> <li>• Student will be automatically withdrawn pursuant to ARS 15-901. Re-enrollment will require an administrative conference and attendance contract.</li> </ul>

The following could be used for intervention/remediation due to excessive absences:

- After-school tutoring
  - Offered Monday, Tuesday, Wednesday & Thursday: 3:50 - 5:15 pm
- Summer school
  - Offered the month of June each summer
- Additional academic courses in lieu of elective courses

### **Tardy to class or school**

Every instructional minute counts and student tardiness interferes with the learning process. Please be respectful of your teacher and fellow classmates and be on time to class. Students carrying a pass to class after the tardy bell rings will be marked present. Students who arrive at class 15 minutes or more

after the bell rings will be considered and marked as Excessively Tardy. If a student is more than 30 minutes late, students will be marked as Excessively Tardy and reported to the Dean and Assistant Principal – their consequence will equal a truancy. Specific tardy procedures are as follows.

<b>Page High School Tardy Intervention Chart</b>	
<b>1 - 2 Tardies (in a class)</b>	<ul style="list-style-type: none"> <li>• Teacher records the tardy (include the tardy #),</li> <li>• Teacher communicates expectation to the student (re-teach) and utilizes classroom management procedures to reinforce expectation.</li> <li>• Teacher may call home.</li> </ul>
<b>3-4 Tardies (in a class)</b>	<ul style="list-style-type: none"> <li>• Referral (tardy ODR) completed by teacher.</li> <li>• Student participates in a truancy round-up.</li> <li>• Student conference</li> <li>• Student assigned to lunch detention.</li> </ul>
<b>5+ Tardies (in a class)</b>	<ul style="list-style-type: none"> <li>• Referral (tardy ODR) completed by the teacher.</li> <li>• Students assigned to lunch detention and/or After-School Detention (ASD) to make-up missing academics.</li> </ul>
<b>Excessive Tardies (15 minutes or more)</b>	<ul style="list-style-type: none"> <li>• Student receives lunch detention. Any unexcused tardy over 15 minutes may be determined a truancy.</li> </ul>
<b>Habitual tardiness</b>	<ul style="list-style-type: none"> <li>• Students who are deemed habitually tardy despite interventions will then receive multiple days of lunch detention and/or after school detention.</li> <li>• Parent conference with administration.</li> </ul>
<i><b>The tardy count starts at zero at the beginning of each semester.</b></i>	

## **LEGAL RAMIFICATIONS OF STUDENT ABSENCES/TRUANCY**

### **City of Page Truancy Guidelines:**

*Arizona Revised Statutes 15-803*

1. It is unlawful for any child who is between six and sixteen years of age to fail to attend school during the hours school is in session, unless either:
  - a. The child is excused pursuant to section 15-802, subsection D or section 15-901, subsection A, paragraph 5, subdivision (c).

*Disclaimer: it is intended that all Page Unified School District handbooks comply with the policies established by the Governing Board of the Page Unified School District. In the event that anything in this handbook conflicts with current district policy, district policy will prevail.*

- b. The child is accompanied by a parent or a person authorized by a parent.
    - c. The child is provided with instruction in a homeschool.
  2. A child who is habitually truant or who has excessive absences may be adjudicated an incorrigible child as defined in section 8-201. Absences may be considered excessive when the number of absent days exceeds ten percent of the number of required attendance days prescribed in section 15-802, subsection B, paragraph 1.
  3. For the purposes of this section:
    - a. "Habitually truant" means a truant child who is truant for at least five school days within a school year
    - b. "Truant" means an unexcused absence for at least one class period during the day.
    - c. "Truant child" means a child who is between six and sixteen years of age and who is not in attendance at a public or private school during the hours that school is in session, unless excused as provided by this section.

*Arizona Revised Statutes 8-304*

ARS 8-304. Investigation of alleged acts of delinquency, dependency and incorrigibility

1. The law enforcement officer having jurisdiction in the place in which an act of delinquency or incorrigibility is alleged to have occurred is responsible for the complete investigation surrounding the alleged commission of the act.
2. A department investigator is responsible for the complete investigation of all complaints of alleged dependency, and a criminal conduct allegation shall be investigated in cooperation with the appropriate law enforcement agencies and according to the protocols established pursuant to section 8-817. The department shall be responsible for the disposition of such a child unless the matter requires the intervention of the court.



## Definitions of Violations



### NOTICE OF NAVAJO NATION TRUANCY LAW

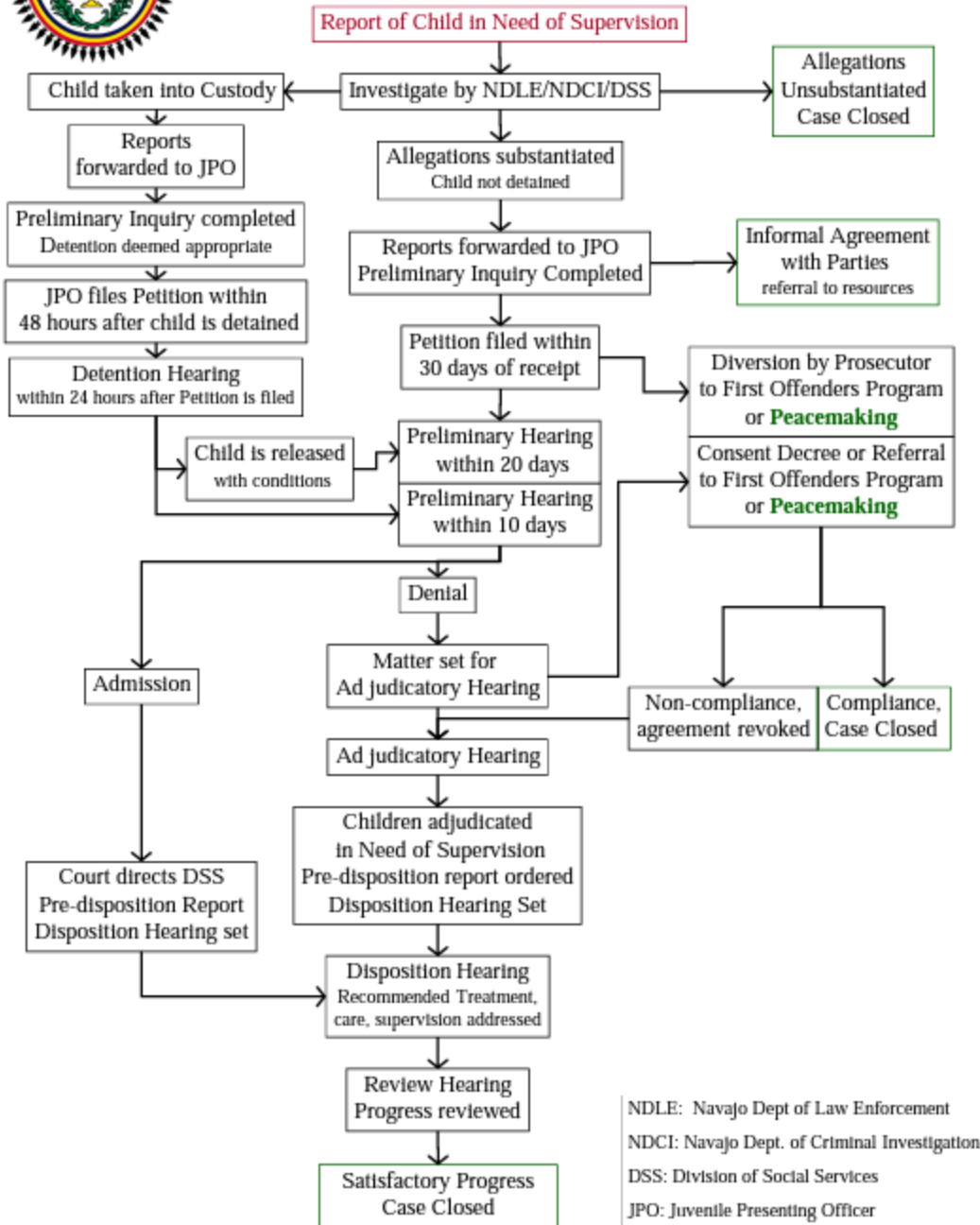
#### 10 NNC 502 & 503

You are hereby given notice of the Navajo Nation Truancy Law regarding compulsory education which states as follows:

- 10 NNC 502 Compulsory School Attendance – Generally: “Education in Navajo schools shall be compulsory as to children between the ages of 5 and 18 years as prescribed and defined in 10 NNC 118 of the Navajo Education Policies.”
- 10 NNC 503 Application of State Law and Navajo Nation Law: “The Navajo Nation Council consents to the application of state compulsory school attendance law to the Indians of the Navajo Nation and their enforcement on Indian lands of the Navajo Nation wherever an established public school district lies or extends within the Navajo Nation.”
- “In addition, 10 NNC 118 of the Navajo Education Policies regarding compulsory attendance shall apply to all Navajo minors between the ages of 5 and 15 and to all persons having care and custody of such minors who are within civil or criminal jurisdiction of the Navajo Nation.”



## Navajo Nation Juvenile Justice System: Children in Need of Supervision



The Navajo Nation Juvenile Justice System: Children in Need of Supervision Flowchart was created by the Navajo Nation Criminal Justice Planning Committee (NNCJPC). Copies of this chart may be reproduced. Attribution should be given to NNCJPC. For questions contact: Navajo Nation Criminal Justice Planning Committee, Office of the Chief Prosecutor, P.O. Box 3779, Window Rock, AZ 86515, 520-871-6622. Chart printed September 2001

## **Page High School Cell Phone Policy**

Personal electronic devices may not be used during instructional time. It is expected that when entering a classroom, electronic devices are silenced and placed in a cell phone lock box. Continued use of electronic devices for purposes other than as a learning tool may result in confiscation of the device and a disciplinary referral. Confiscated devices may be kept by the Assistant Principal's office until returned to the student's parent/guardian. Please see the discipline rubric for consequences.

Headphones, earbuds and/or ear plugs will not be allowed out during instructional time unless permission is granted by the adult in the classroom.

## **Page High School Cell Phone Daily Procedures**

In 9th through 12th grade the expectation for all students for the 25/26 school year will be to lock their cell phone up at the beginning of class in their Teacher's designated cell phone lockbox. Teachers will be responsible for securing all cell phones at the beginning of each class period. The expectation is that if technology needs to be used during any given class period the teacher will utilize the laptop cart that is in their classroom. Under no circumstances should students have cell phones in their possession during instructional time unless it is for an educational purpose.

In 7th and 8th grade students will report to their 7th period class at the beginning of the school day and place their cell phone in the designated cell phone lockbox for the entire school day. Students in grades 7th and 8th grade will not be allowed to be in possession of a cell phone during the school day. If a student is found to be in possession of a cell phone it will be considered insubordination and the necessary consequence per the student discipline matrix will be enforced. Teachers in these grades will utilize their laptop cart if technology is needed during the school day.

Cell phone use during instructional time is not permitted and should not be visible for any reason. Students will keep their cell phone out of sight by securing it in the school provided cell phone lock box. If the classroom teacher is going to use technology in their classroom on any given day they will plan accordingly and utilize the laptop cart.

## **PUSD / Page High School is not responsible for lost, stolen or damaged devices.**

Students may not use electronic devices including cell phones during any testing. Teachers retain the right to collect electronic devices/cell phones during testing and other instructional time.

**Electronic devices and personal listening items can be a disruption to the educational process in the classroom and pose a potential safety hazard around campus.** Emergency communication can be made to and from the school office.

**Arizona Revised Statute 15-120.05.**

Student access to internet; student use of wireless communication devices; policies and procedures; definitions

- A. Each school district governing board and charter school governing body shall prescribe and enforce policies and procedures that both:
  - 1. Govern student access to the internet as provided by the school, including policies that restrict student access to social media platforms. The policies and procedures adopted pursuant to this paragraph shall allow teachers to give students access to social media platforms to the extent necessary for educational purposes.
  - 2. Limit the use of wireless communication devices by students during the school day. The policies and procedures adopted pursuant to this paragraph shall do all of the following:
    - (a) allow students to use wireless communication devices if any of the following applies:
      - (i) for educational purposes, as directed by the student's teacher.
      - (ii) during an emergency.
      - (iii) the student needs the student's wireless communication device because the student has a medical condition.
    - (b) include procedures for a student's parent to contact the student during the school day.
    - (c) include procedures for a student to contact the student's parent during the school day.
- B. At the beginning of each school year, the school district shall provide to parents, teachers and students a copy of the policies adopted pursuant to subsection a of this section and notify the parents, teachers and students of any changes to the policy.
- C. Each school district governing board and charter school governing body shall prescribe and enforce policies and procedures that both:
  - 1. Govern student access to the internet as provided by the school including policies that restrict student access to social media platforms. The policies and procedures adopted pursuant to this paragraph shall allow teachers to give students access to social media platforms to the extent necessary for educational purposes.
  - 2. Limit the use of wireless communication devices by students during the school day. The policies and procedures adopted pursuant to this paragraph shall allow students to use wireless communication devices for educational purposes, as directed by the student's teacher, or during an emergency.
- B. For the purposes of this section:

1. **"school day"** means periods of time when students are at school, including meals, passing periods and recess.
2. **"social media platform"** means a website, computer application or other digital platform that is used for social networking and creating or exchanging virtual content.
3. **"wireless communication devices"** includes personal devices and devices that are provided by the school.



## **DRESS for SUCCESS**

Students and their parents/guardians have the responsibility to be aware of the school's specific dress code and to conform to these requirements. If a student or parent has any questions about whether specific attire or accessories are in compliance with this dress code, they should contact an Administrator prior to wearing such attire or accessory to ensure compliance. On campus, the faculty, staff and Administration have the responsibility to interpret and enforce this policy. Each year parents ask for guidelines as they help students select appropriate attire for school. *Guidelines provided serve as Page High School's Dress Code Policy.* School pride, morale and image are influenced by the general appearance of students. PUSD wants to provide opportunities for students to express themselves within the set of parameters listed below:

***The school is not responsible for the storage, inventory, or safekeeping of any confiscated item; this includes hats and electronic devices.***

*Disclaimer: it is intended that all Page Unified School District handbooks comply with the policies established by the Governing Board of the Page Unified School District. In the event that anything in this handbook conflicts with current district policy, district policy will prevail.*

## The Page High School Student Dress Guidelines are as follows:

### Students must wear:

- Shirt with fabric in the front, back, on the sides under the arms and covering the shoulders.
- Bottoms that extend to at least mid-thigh.
- Shoes appropriate to a safe educational environment.

### Student may wear:

- Fitted pants, leggings, yoga pants, jeggings, skinny jeans.
- Ripped jeans, provided holes/rips do not go above mid-thigh.
- Religious and cultural head coverings and hair accessories.
- Religious and cultural medallions, medals or beads provided it does not create a safety hazard.
- Headbands.
- If mask is worn, it must be clear.
- Hats, beanies, and hoods in school environments, including the classroom when permitted by the teacher.

Dress guidelines apply to males and females

### Students cannot wear:

- Shirts without shoulder material
- See through materials that expose undergarments
- Graphic representations on clothing, accessories, or the body that display profanity, vulgarity, obscenities, hate speech, or promote alcohol, cigarettes, vaping, drugs, gang-related behavior\*, or sexual activity
- Images or language on clothing, accessories, or body that display or create a hostile or intimidating environment
- Bathing suits
- Helmets or sunglasses except outdoors *(unless medically necessary)*
- Accessories that could be considered dangerous or could be used as a weapon
- Gang related clothing, which may include bandanas: \* *Gang related behavior or clothing which is defined by law enforcement. Exceptions for special activities or health considerations may be pre-approved by the Administration. Dress should be appropriate for the weather during outside activities. These dress expectations shall apply to regular school days and summer school; as well as any school-related activities.*

### The following are basic principles that we adhere to as a District:

- Students may be removed from a classroom with minimal loss of instructional time as a result of a dress violation.
- No student will be disproportionately affected by student dress enforcement because of gender, race, body size, or body maturity.
- Students are not to be shamed or required to display their body in front of others (students, parents or staff) during any school activity.
- Student dress expectations will be clearly communicated to all members of the school community.
- Teachers and staff will be properly trained on how to enforce expectations of student dress.

---

**Note:** Students may be asked to remove accessories and/or change clothing during curriculum or activities in which these items present a safety hazard.

Approved: June 11, 2024

*Disclaimer: it is intended that all Page Unified School District handbooks comply with the policies established by the Governing Board of the Page Unified School District. In the event that anything in this handbook conflicts with current district policy, district policy will prevail.*

# Section IV



## POSSIBLE BEHAVIOR RESPONSES AND INTERVENTIONS PUSD DISCIPLINE MATRIX

### Page High School Positive Behavioral Interventions and Supports (PBIS)

Page High School will make every effort to support the student in minimizing reoccurrence of negative behaviors through Positive Behavioral Interventions and Supports. Different interventions and supports which may be incurred are:

- **Social Skills Group**- The teaching of social skills for students who need additional support in handling specific social issues and/or acting appropriately in social situations.
- **Substance Groups**: The teaching of substance awareness and prevention. Groups are held with counselors or by outside agencies.
- **Academic Skills**- This intervention targets students with low grades and teaches organization and provides academic support by meeting with students individually or in a group check-in on academic progress.
- **Individual/Group Counseling**- Group and/or individual counseling on specific issues. This counseling may occur with PUSD trained personnel or may be referred out to outside professional services.
- **Check-in & Check-out**- Extra support for students having troubles following school-wide expectations. Students check-in with a staff member in the morning and at the end of the day. Each teacher during the day provides feedback to the student on their CICO sheet.
- **STEP Program** - This is an out-of-school, in-district alternative to long-term suspension. The goal of the program is to give students an opportunity to demonstrate appropriate behavior, attendance, and academic progress.
- **Safety Plan** - A Safety Plan is designed to provide special supervision to individual students specifically addressing issues of safety. The goal is to minimize the risk of harm to the student or others.
- **Re-entry Plan**- The goal of the Re-Entry plan is to support a student in returning to school as soon as possible, with the support the student will need to be successful when they return.
- **Behavior Plan**- Creation of a plan to address specific behaviors of an individual student. The creation of the behavior plan involves teachers, counselors, administration and other staff to address behaviors of concern.
- **Conflict resolution/mediation**- counseling involving groups of students or individuals who are having conflict between them to resolve the personal or group conflict.
- **Threat Assessment**- A threat assessment may be conducted to determine if an individual is a credible threat to themselves or others. This information is not for public knowledge as per the safety of all stakeholders.

## Office Referrals – Continued misbehavior

Any staff member (such as a teacher, bus driver, librarian, custodian, etc.) may submit an office discipline referral to the office if a student is involved in a major incident or minor incidents continue after interventions are put in place. The referral should describe in detail the problem behavior and include both the signature of the referring staff member and the student. An administrator or designee will talk with the student to hear the student's side of the story, then decide what consequence and/or intervention and support the student needs to restore them back to the learning environment. The consequence(s) will depend on the expectation not met or any patterns of behavior, and previous actions taken, including the possibility of conducting a threat assessment.

<p>Disciplinary actions may occur at any of the levels listed below, depending upon the severity of the infraction.  <i>Below are listed possible actions that may be taken.</i></p>	
<p><b>After-School Detention (ASD):</b></p>	<ul style="list-style-type: none"> <li>● Students may be assigned Monday through Wednesday.</li> <li>● Students will be required to attend from 3:50 p.m. to 5:00 p.m.</li> <li>● Students may ride the 5:05pm bus home.</li> <li>● Students will complete homework and/or quietly read during this time.</li> <li>● <b><i>If a student does not show up for their assigned ASD, an additional day may be added to the time to be served. Also, these students may be referred to the In School Suspension Program.</i></b></li> </ul>
<p><b>In School Suspension (ISS)</b></p>	<p>This program is an alternative to out of school suspension. Students will be expected to follow all of the ISS Room rules and continue academic progress. Failure to comply with the rules will result in extra days or out of school suspension.</p>
<p><b>Lunch-time Detention</b></p>	<p>A student can lose the privilege to socialize during lunch. The student will report to ISS for the duration of lunch time. Lunch is provided by Chartwells. Student lunch deliveries will not be accepted.</p>
<p><b>Short-term Suspension (OCS)</b></p>	<p>A student may be suspended off campus for a period not to exceed ten (10) school days. Students suspended off campus are ineligible to practice/participate or compete in any school activity and may not be present on campus or at school events during the suspension. Beyond the principal, there is no appeal from a short-term suspension. Suspensions will be served consecutively.</p>

<b>Long-term Suspension (OCS)</b>	Suspension exceeding ten (10) days. The administrator or designee must set up a formal hearing before a hearing officer who is appointed by the school board. After the hearing, the officer will render his/her decision within one school day. The decision must be written and sent to the parents of the student and to the superintendent. The suspension must be reported to the school board within five days.
<b>Expulsion</b>	A student expulsion may be imposed only by the school board and requires a formal hearing. Expulsion is the permanent loss of the right to attend ANY state education institution for a minimum of 2 complete semesters. Only the school board may reverse an expulsion, upon appeal of the expelled student after completion of the semester in which the expulsion occurred plus 2 complete semesters.
<b>Student Transition to Educational Progress (S.T.E.P Program)</b>	This is an out-of-school, in-district alternative to long-term suspension. Students long term suspended off campus may be placed in the S.T.E.P Program by administration or hearing officer and will be provided an opportunity to continue their academic progress, gain community service, and participate in various counseling interventions. The goal of the program is to give students an opportunity to demonstrate appropriate behavior, attendance, and academic progress. Students who fail to meet expectations as set forth in the S.T.E.P program may face long term suspension or expulsion.
<b>Community Service</b>	A student may be assigned community service hours, where in a structured, supervised environment, students will be required to complete tasks, on their own time.
<b>Police Involvement</b>	When a law is broken the police will be contacted. School related conduct resulting in an arrest may also warrant a suspension or expulsion from school.
<b>Suspension of Bus Privileges</b>	Students who violate school rules while riding the bus may lose bus privileges or be suspended.

Page Unified School District has zero tolerance for gang activity. Gang dress, graffiti, talk, drawings, etc. will be documented and students identified. If any discipline activity is tied to gangs in any way, the consequence tied to the activity will be assessed. (Board Policy JICF).

The police may be called to investigate serious violations. If this occurs, school officials will make every effort to notify parents or guardians. Any actions taken by law enforcement officials will be in addition to action taken by the school.

Students with major offenses necessitating a district hearing during his or her career with Page Unified School District are at risk of long term suspension (up to one year). Other major offenses, due to severity in nature, may warrant an expulsion hearing on a first incident. (Board Policy JKE)

Expulsion hearings are requested for serious incidents. A recommendation to expel shall be made by the Superintendent. The authority to expel rests solely with the school board. Expulsion is the permanent exclusion of a student from school and school activities. The student may not be readmitted until at least two (2) complete semesters have passed (the remainder of the semester in which the violation has occurred and two (2) additional semesters). (Board Policy JKE)

It is the responsibility of all school employees to report all suspected instances of the use, possession, or sale of alcohol/drugs. Distribution, possession, and/or under the influence of drugs is prohibited by district policy (JICH-R). Research and studies have shown that a student can be considered "under the influence" of drugs, including marijuana, for up to 36 hours and are then subject to school discipline.

Discipline proceedings will generally involve incidents that occur on Page High School campus and property (this includes property inside and outside of the gates and school vehicles), during school hours, and school related activities and field trips. Students and parents should be aware of the extent of authority of school officials in relation to off-campus conduct. School boards and their agents can govern conduct which can be shown to be detrimental to the operation of schools. The effect on the schools, rather than where an incident occurs, determines the scope of school officials' authority. The right to punish for offenses off school property is based upon, not the time or place of the offense, but its effect upon morale and efficiency of the school. Page High School will work hard to protect its interests while protecting the rights of parents and students, with safety and well-being guiding its decision-making.



*Disclaimer: it is intended that all Page Unified School District handbooks comply with the policies established by the Governing Board of the Page Unified School District. In the event that anything in this handbook conflicts with current district policy, district policy will prevail.*



# Page Unified School District

## Discipline Matrix

### Grades 7<sup>th</sup> through 12<sup>th</sup>

*Disclaimer: it is intended that all Page Unified School District handbooks comply with the policies established by the Governing Board of the Page Unified School District. In the event that anything in this handbook conflicts with current district policy, district policy will prevail.*

**PUSD DISCIPLINE MATRIX GRADES SIXTH THROUGH TWELFTH**

<b>BEHAVIOR</b>	<b>DESCRIPTION</b>	<b>1ST OFFENSE</b>	<b>2ND OFFENSE</b>	<b>3RD OFFENSE</b>	<b>4TH OFFENSE</b>
<p align="center">★ = POLICE REFERRAL    ⊗ = THREAT ASSESSMENT    □ = STUDENT SUPPORT SERVICE REFERRAL    ▲ = DCS REFERRAL</p> <p align="center"><b>AGGRESSION</b></p>					
Verbal Provocation	Verbal Dispute	ASD - 1 DAY	ISS - 1 DAY	ISS - 2 DAYS	SUS - 1 DAY
	Verbal Altercation	ISS - 1 DAY	ISS - 2 DAYS	ISS - 3 DAYS	DISTRICT HEARING OR OPTION TO ENROLL INTO STEP PROGRAM (20 DAYS)
	Offensive Language Directed at a Staff Member	ISS - 2 DAYS	ISS (4 DAYS)	SUS - 2 DAYS	SUS - 10 DAYS PENDING DISTRICT HEARING
Minor Aggressive Act	Physical Aggression Toward a Student	ISS - 2 DAYS	ISS (3 DAYS)	SUS (3 DAYS)	DISTRICT HEARING OR OPTION TO ENROLL INTO STEP PROGRAM
		⊗	⊗	⊗ / □	⊗ / □
Disorderly Conduct	Disturb Educational Setting	SUS - 4 DAYS	DISTRICT HEARING OR OPTION TO ENROLL INTO STEP PROGRAM (20 DAYS)	SUS - 10 DAYS PENDING DISTRICT HEARING	SUS (10 DAYS) PENDING EXPULSION HEARING
		⊗	⊗	⊗ / □	⊗ / □
Recklessness	Non-Violent Playful Behavior	SUS (2 DAYS)	SUS (4 DAYS)	DISTRICT HEARING OR OPTION TO ENROLL INTO STEP PROGRAM (20 DAYS)	SUS (10 DAYS) PENDING DISTRICT HEARING
		ASD - 1 DAY	ASD (3 DAYS)	ISS - 1 DAY	ISS (3 DAYS)
Fighting	Fighting	SUS (2 DAYS)	SUS (4 DAYS)	DISTRICT HEARING OR OPTION TO ENROLL INTO STEP PROGRAM (20 DAYS)	SUS (10 DAYS) PENDING DISTRICT HEARING
		⊗	⊗	⊗ / □	⊗ / □
Assault	Physical Injury of a Student	SUS (4 DAYS)	DISTRICT HEARING OR OPTION TO ENROLL INTO STEP PROGRAM (20 DAYS)	SUS (10 DAYS) PENDING DISTRICT HEARING	SUS (10 DAYS) PENDING EXPULSION HEARING
		⊗ / □	⊗	★ / ⊗ / □	★ / ⊗ / □
Physical Aggression Toward Staff	Aggressive behavior with the potential to cause physical harm towards others, including a forceful action, attitude, or behavior that is	SUS (10 DAYS) PENDING DISTRICT HEARING	SUS (10 DAYS) PENDING EXPULSION HEARING		

Disclaimer: it is intended that all Page Unified School District handbooks comply with the policies established by the Governing Board of the Page Unified School District. In the event that anything in this handbook conflicts with current district policy, district policy will prevail.

**PUSD DISCIPLINE MATRIX GRADES SIXTH THROUGH TWELFTH**

BEHAVIOR		DESCRIPTION	1ST OFFENSE	2ND OFFENSE	3RD OFFENSE	4TH OFFENSE
		★ = POLICE REFERRAL ☒ = THREAT ASSESSMENT ☐ = STUDENT SUPPORT SERVICE REFERRAL ▲ = DCS REFERRAL expressed physically toward a staff member. ★ / ☒ / ☐				
Aggravated Assault	Physical Injury of Staff	Causing physical injury to a staff member. Cases in which physical injury are caused by accident or other action undertaken on the reasonable belief that it was necessary to protect another person or self shall not constitute a violation of this rule.	SUS (10 DAYS) PENDING DISTRICT HEARING	SUS (10 DAYS) PENDING EXPULSION HEARING	SUS (10 DAYS) PENDING EXPULSION HEARING	SUS (10 DAYS) PENDING EXPULSION HEARING
	Endangering the Lives of Others or Causing Serious Bodily Injury	Actions causing serious bodily harm or actions that significantly jeopardizes an individual(s) safety or well-being.	SUS (10 DAYS) PENDING DISTRICT HEARING	SUS (10 DAYS) PENDING EXPULSION HEARING	SUS (10 DAYS) PENDING EXPULSION HEARING	SUS (10 DAYS) PENDING EXPULSION HEARING
<b>ALCOHOL, MARIJUANA, TOBACCO, AND OTHER DRUGS</b>						
This includes being under the influence at school, school-sponsored events and on school-sponsored transportation.						
Tobacco Violation	Use of or Possession of Tobacco	The use/possession of tobacco products, tobacco substitutes, electronic cigarettes, other chemical inhalation devices, or tobacco vapor products.	ASD - 1 DAY	ASD (3 DAYS)	ISS - 1 DAY	ISS (3 DAYS)
	Sale, Distribution, or Intent to Sell or Distribute of Tobacco	A person who knowingly sells, gives or furnishes a tobacco product, a vapor product or any instrument or paraphernalia that is solely designed for the smoking or ingestion of tobacco or shisha, including a hookah or waterpipe, to a minor is guilty of a petty offense.	ISS - 2 DAYS	SUS (2 DAYS)	SUS (10 DAYS) PENDING DISTRICT HEARING	SUS (10 DAYS) PENDING EXPULSION HEARING
Alcohol Violation	Use of or Possession of Alcohol	The use of or possession or consumption of alcohol products.	DISTRICT HEARING OR OPTION TO ENROLL INTO STEP PROGRAM (16 DAYS)	DISTRICT HEARING OR OPTION TO ENROLL INTO STEP PROGRAM (36 DAYS)	SUS (10 DAYS) PENDING DISTRICT HEARING	SUS (10 DAYS) PENDING EXPULSION HEARING
	Sale, Distribution, or Intent to Sell or Distribute of Alcohol	The violation of laws or ordinances prohibiting the manufacture, sale, purchase, transportation, possession or use of intoxicating alcoholic beverages or substances represented as alcohol.	SUS (10 DAYS) PENDING DISTRICT HEARING	SUS (10 DAYS) PENDING EXPULSION HEARING	SUS (10 DAYS) PENDING EXPULSION HEARING	SUS (10 DAYS) PENDING EXPULSION HEARING
Marijuana Violation	Use of or Possession of Marijuana / Paraphernalia	The use or possession of paraphernalia includes anything you might use to store, prepare, make, contain, ingest, or consume marijuana.	DISTRICT HEARING OR OPTION TO ENROLL INTO STEP PROGRAM (16 DAYS)	DISTRICT HEARING OR OPTION TO ENROLL INTO STEP PROGRAM (36 DAYS)	SUS (10 DAYS) PENDING DISTRICT HEARING	SUS (10 DAYS) PENDING EXPULSION HEARING
	Sale, Distribution, or Intent to Sell or Distribute of Marijuana	A person who knowingly sells, gives or furnishes a marijuana product, a vapor product or any instrument or paraphernalia that is solely designed for the smoking or ingestion of marijuana or, including a hookah or waterpipe, to a minor is guilty of a petty offense.	SUS (10 DAYS) PENDING DISTRICT HEARING	SUS (10 DAYS) PENDING EXPULSION HEARING	SUS (10 DAYS) PENDING EXPULSION HEARING	SUS (10 DAYS) PENDING EXPULSION HEARING

Disclaimer: it is intended that all Page Unified School District handbooks comply with the policies established by the Governing Board of the Page Unified School District. In the event that anything in this handbook conflicts with current district policy, district policy will prevail.

**PUSD DISCIPLINE MATRIX GRADES SIXTH THROUGH TWELFTH**

BEHAVIOR		DESCRIPTION	1ST OFFENSE	2ND OFFENSE	3RD OFFENSE	4TH OFFENSE
★ = POLICE REFERRAL    ⊗ = THREAT ASSESSMENT    □ = STUDENT SUPPORT SERVICE REFERRAL    ▲ = DCS REFERRAL						
Inhalants	Use of or Possession of Inhalants	The use of volatile substances that produce chemical vapors that can be inhaled to induce a psychoactive, or mind-altering, effect.	ISS - 2 DAYS	DISTRICT HEARING OR OPTION TO ENROLL INTO STEP PROGRAM (16 DAYS)	SUS (10 DAYS) PENDING DISTRICT HEARING	SUS (10 DAYS) PENDING EXPULSION HEARING
	Sale, Distribution, or Intent to Sell or Distribute of Inhalants	Sell, transfer or offer to sell or transfer a vapor-releasing substance containing a toxic substance if such person is not, at the time of sale, transfer or offer, employed by or engaged in operating a licensed commercial establishment at a fixed location regularly offering such substance for sale and such sale, transfer or offer is made in the course of employment or operation.	SUS (10 DAYS) PENDING EXPULSION HEARING			
Prescription Drugs/ Non-Prescription Drugs	Use of or Possession of Prescription / Non-Prescription Drugs	Possess or use a prescription-only drug unless the person obtains the prescription-only drug pursuant to a valid prescription of a prescriber who is licensed.	DISTRICT HEARING OR OPTION TO ENROLL INTO STEP PROGRAM (16 DAYS)	DISTRICT HEARING OR OPTION TO ENROLL INTO STEP PROGRAM (36 DAYS)	SUS (10 DAYS) PENDING DISTRICT HEARING	SUS (10 DAYS) PENDING EXPULSION HEARING
	Sale, Distribution, or Intent to Sell or Distribute of Prescription/Non Prescription Drugs	Manufacture, sell or distribute a Prescription or misbranded drug.	SUS (10 DAYS) PENDING EXPULSION HEARING			
Dangerous Drugs	Dangerous Drugs	Including, but not limited to Cocaine, Ecstasy, Fentanyl, Hallucinogens, Heroin, Methamphetamines, Salvia, Spice, and other unknown drugs.	SUS (10 DAYS) PENDING DISTRICT HEARING	SUS (10 DAYS) PENDING EXPULSION HEARING		
	Sale, Distribution, or Intent to Sell or Distribute of Illicit	Possession, use, administration, acquisition, sale, manufacture or transportation of dangerous drugs: Cocaine, Ecstasy, Heroin, LSD, Peyote, Fentanyl and other unknown drugs.	SUS (10 DAYS) PENDING EXPULSION HEARING			
<b>ARSON</b>						
Arson	Of a Structure of Property	Commits arson of a structure or property by knowingly and unlawfully damaging a structure or property by knowingly causing a fire or explosion.	ISS (4 DAYS)	SUS (10 DAYS) PENDING DISTRICT HEARING	SUS (10 DAYS) PENDING EXPULSION HEARING	
			★ / ⊗ / □			
<b>ATTENDANCE POLICY VIOLATION</b>						
Tardy	Excessive Tardy	1st Violation: 3 - 4 SAME CLASS	LUNCH DETENTION (2 DAYS)		ASD (4 DAYS)	ISS (2 DAYS) AND ASD (2 DAYS)
		2nd Violation: 5 SAME CLASS				
		3rd Violation: 6 SAME CLASS				
		4th Violation: 7+ SAME CLASS				

Disclaimer: it is intended that all Page Unified School District handbooks comply with the policies established by the Governing Board of the Page Unified School District. In the event that anything in this handbook conflicts with current district policy, district policy will prevail.

**PUSD DISCIPLINE MATRIX GRADES SIXTH THROUGH TWELFTH**

BEHAVIOR		DESCRIPTION	1ST OFFENSE	2ND OFFENSE	3RD OFFENSE	4TH OFFENSE
		★ = POLICE REFERRAL ☒ = THREAT ASSESSMENT ☐ = STUDENT SUPPORT SERVICE REFERRAL ▲ = DCS REFERRAL				
Truancy	Skip/Ditching Class	Unapproved absence from a class period within the school day, including leaving class without permission.	ASD - 1 DAY	ASD (2 DAYS)	ASD (3 DAYS)	ISS (2 DAYS), AND ASD (2 DAYS)
	Neglecting Obligations	Unapproved absence from an assigned detention.	ASD (2 DAYS)	ASD (3 DAYS)	ISS - 1 DAY AND ASD (1 DAY)	ISS (2 DAYS), AND ASD (2 DAYS)
<b>HARASSMENT, THREAT AND INTIMIDATION</b>						
Harassment, Nonsexual	Minor	Harassment is a form of discrimination. Physical or verbal conduct related to a person's race, religion, national origin, age, gender (including pregnancy), disability, sexual orientation, military status, genetic information or other category protected by law. Includes, but is not limited to, verbal harassment or abuse, implied or overt threat(s), physical acts of aggression, and intimidating behavior, which have the effect of substantially or unreasonably interfering with a student's education, use of services, or participation in activities.	ISS - 2 DAYS	ISS (3 DAYS)	SUS (3 DAYS)	SUS (10 DAYS) PENDING DISTRICT HEARING
	Major	Knowing and willful course of conduct that is directed at a specific person, that a reasonable person would consider as seriously alarming, seriously disruptive, seriously tormenting, or seriously terrorizing the person and that serves no legitimate purpose.	SUS (10 DAYS) PENDING DISTRICT HEARING	SUS (10 DAYS) PENDING EXPULSION HEARING	★ / ☒ / ☐	
Bullying		Physical, verbal, written, or electronic conduct, directed toward a student that is: 1) Unwanted, 2) Repeated, and 3) Involves an imbalance of power. These actions are so pervasive, severe, and objectively offensive, that they: 1) have the purpose of creating or resulting in an intimidating, hostile, or offensive academic environment, or 2) have the purpose or effect of substantially or unreasonably interfering with a student's academic performance, which deprives the student access to educational opportunities.	SUS (2 DAYS)	DISTRICT HEARING OR OPTION TO ENROLL INTO STEP PROGRAM (16 DAYS)	DISTRICT HEARING OR OPTION TO ENROLL INTO STEP PROGRAM (36 DAYS)	SUS (10 DAYS) PENDING DISTRICT HEARING
					☒ / ☐	
Threat or Intimidation	Intimidation/Threat Toward a Student	Use of coercion, force, threats, violence, intimidation or similar conduct that constitutes a threat to a student's safety or interferes with school purposes.	SUS (4 DAYS)	DISTRICT HEARING OR OPTION TO ENROLL INTO STEP PROGRAM (16 DAYS)	SUS (10 DAYS) PENDING DISTRICT HEARING	SUS (10 DAYS) PENDING EXPULSION HEARING
	Intimidation/Threat Toward a Staff	Use of coercion, force, threats, violence, intimidation or similar conduct that constitutes a threat to a staff member's safety or interferes with school purposes.	SUS (10 DAYS) PENDING DISTRICT HEARING	SUS (10 DAYS) PENDING EXPULSION HEARING	★ / ☒ / ☐	
Hazing		Committing an act against a student or coercing a student to commit an act that creates risk of harm to a person, in order to be initiated into a student organization or class, or for any other purpose. Involves physical risks or mental distress through humiliating, intimidating, or degrading treatment.	SUS (2 DAYS)	SUS (4 DAYS)	SUS (6 DAYS)	SUS (10 DAYS) PENDING DISTRICT HEARING
					★ / ☒ / ☐	
<b>(ACADEMIC INFRACTIONS) - LYING, CHEATING, FORGERY OR PLAGIARISM *Merriam Webster Dictionary Online*</b>						

Disclaimer: it is intended that all Page Unified School District handbooks comply with the policies established by the Governing Board of the Page Unified School District. In the event that anything in this handbook conflicts with current district policy, district policy will prevail.

PUSD DISCIPLINE MATRIX GRADES SIXTH THROUGH TWELFTH						
BEHAVIOR	DESCRIPTION	1ST OFFENSE	2ND OFFENSE	3RD OFFENSE	4TH OFFENSE	
	★ = POLICE REFERRAL ⊗ = THREAT ASSESSMENT ☐ = STUDENT SUPPORT SERVICE REFERRAL ▲ = DCS REFERRAL					
Lying	Using or submitting work that is not your own, also known as cheating, plagiarism, copying, transferring computer files, etc. Students will be expected to follow classroom instructions relating to academic integrity.	LD (1 DAY)	ASD (2 DAYS)	ISS - 1 DAY	ISS - 2 DAYS	
Cheating						
Plagiarism						
Forgery	Copying with the intent to deceive. It need not be handwriting, the law of forgery covers printing, and engraving.	ASD - 1 DAY	ISS - 1 DAY	ISS - 2 DAYS	ISS (2 DAYS) AND ASD (1 DAY)	
<b>SCHOOL POLICIES, OTHER VIOLATIONS OF</b>						
Combustible	Student is in possession and/or use of substance or object that is readily capable of causing bodily harm or property damage, i.e., matches, lighters, firecrackers, gasoline, and lighter fluid.	CONFISCATE	ASD (2 DAYS)	ASD (3 DAYS)	ISS - 1 DAY	
Contraband	Having at school or on the bus items that are harmful, or could cause harm, or are being used in a questionable, inappropriate or unsafe manner. Includes, but is not limited to items such as: water balloons, water guns, snap caps, stink bombs, itching powder, rubber bands, shooters, eggs, shaving cream, laser pointer, aerosol sprays of any type, toys, bandannas, etc.	CONFISCATE	ASD (2 DAYS)	ASD (3 DAYS)	ISS - 1 DAY	
Defiance, Disrespect, and Non-Compliance	Defiance	ASD - 1 DAY	ASD (2 DAYS)	ASD (3 DAYS)	ISS (1 DAY) AND ASD (1 DAY)	
	Disrespectful Behavior	ASD - 1 DAY	ASD (2 DAYS)	ASD (3 DAYS)	ISS (1 DAY) AND ASD (1 DAY)	
	Insubordination	ASD (2 DAYS)	ASD (3 DAYS)	ISS - 1 DAY AND ASD - 1 DAY	ISS - 2 DAYS AND ASD (2 DAYS)	
Disruption	Class Disruption	LD - (2 DAYS)	ASD (2 DAYS)	ASD (3 DAYS)	ISS - 1 DAY AND ASD - 1 DAY	
	School Disruption	SUS - 2 DAYS	SUS - 4 DAYS	DISTRICT HEARING OR OPTION TO ENROLL INTO STEP PROGRAM (20 DAYS)	SUS (10 DAYS) PENDING DISTRICT HEARING	
Dress Code Violation		⊗		⊗ / ☐		
		WARNING	LD - 2 DAYS	ASD - 2 DAYS	ISS - 1 DAY	
Gambling		LD - 2 DAYS	ASD (2 DAYS)	ASD (3 DAYS)	ISS - 1 DAY	
		WARNING	LD - 2 DAYS	ASD - 2 DAYS	ASD - 3 DAYS	
Language, Inappropriate		SUS (1 DAY)	SUS (2 DAYS)	SUS (3 DAYS)	SUS (10 DAYS) PENDING DISTRICT HEARING	

Disclaimer: it is intended that all Page Unified School District handbooks comply with the policies established by the Governing Board of the Page Unified School District. In the event that anything in this handbook conflicts with current district policy, district policy will prevail.

PUSD DISCIPLINE MATRIX GRADES SIXTH THROUGH TWELFTH					
BEHAVIOR	DESCRIPTION	1ST OFFENSE	2ND OFFENSE	3RD OFFENSE	4TH OFFENSE
★ = POLICE REFERRAL ☒ = THREAT ASSESSMENT ☐ = STUDENT SUPPORT SERVICE REFERRAL ▲ = DCS REFERRAL (Level) membership or affiliation with a gang.					
Negative Group Affiliation	Participation or association with a group in which the student's conduct presents a threat to himself/herself or others, is not in the best interest of the school, or causes a substantial disruption in the school environment.	SUS (10 DAYS) PENDING DISTRICT HEARING	SUS (10 DAYS) PENDING EXPULSION HEARING	☒ / ☐	
Parking Lot Violation	Not following school policy on student parking or unlawful/ dangerous use of an automobile on school property.	WARNING	LD - (2 DAYS)	ASD (2 DAYS)	ASD (3 DAYS)
Public Display of Affection	Inappropriate Public Display of Affection	WARNING	LD - (2 DAYS)	ASD (2 DAYS)	ASD (3 DAYS)
<b>SCHOOL THREAT</b>					
School Threat	School Shooting Threat	SUS (10 DAYS) PENDING DISTRICT HEARING	SUS (10 DAYS) PENDING EXPULSION HEARING	★ / ☒ / ☐	
Bomb Threat	Bomb Threat	SUS (10 DAYS) PENDING DISTRICT HEARING	SUS (10 DAYS) PENDING EXPULSION HEARING	★ / ☒ / ☐	
Chemical or Biological Threat	A threat to detonate an explosive or incendiary device to cause property damage, death, or injuries, whether or not such a device actually exists.			★ / ☒ / ☐	
Fire Alarm Misuse	Fires and Misuse of Fire Alarms/Extinguishers	SUS (4 DAYS)	SUS (10 DAYS) PENDING DISTRICT HEARING	SUS (10 DAYS) PENDING EXPULSION HEARING	☒ / ☐
<b>SEXUAL OFFENSES</b>					
Pornography	Pornographic Materials	ISS (2 DAYS)	ISS (3 DAYS)	DISTRICT HEARING OR OPTION TO ENROLL INTO STEP PROGRAM (20 DAYS)	SUS (10 DAYS) PENDING DISTRICT HEARING
Indecent Exposure or Public Sexual Indecency	Sexual Activity	SUS (4 DAYS)	SUS (8 DAYS)	DISTRICT HEARING OR OPTION TO ENROLL INTO STEP PROGRAM (20 DAYS)	SUS (10 DAYS) PENDING DISTRICT HEARING
Harassment, Sexual	Sexual Harassment	SUS (10 DAYS) PENDING DISTRICT HEARING	★ / ☒ / ☐ / ▲	SUS (10 DAYS) PENDING EXPULSION HEARING	★ / ☒ / ☐ / ▲
	Sexual Abuse				
	Sexual Conduct with a				

Disclaimer: it is intended that all Page Unified School District handbooks comply with the policies established by the Governing Board of the Page Unified School District. In the event that anything in this handbook conflicts with current district policy, district policy will prevail.

PUSD DISCIPLINE MATRIX GRADES SIXTH THROUGH TWELFTH						
BEHAVIOR		★ = POLICE REFERRAL ☒ = THREAT ASSESSMENT ☑ = STUDENT SUPPORT SERVICE REFERRAL ▲ = DCS REFERRAL	1ST OFFENSE	2ND OFFENSE	3RD OFFENSE	4TH OFFENSE
Sexual Violence	Minor	Physical sexual acts against a person's will, or where a person is incapable of giving consent.				
	Child Molestation					
	Sexual Assault					
<b>TECHNOLOGY, IMPROPER USE OF</b>						
Electronic Device/Technology Misuse	PUSD Device	Unauthorized and/or non-educational use of electronic devices/technology. Use of District technology is a privilege and not a right. If the misuse constitutes another violation, consequences consistent with the other violation may also be given.	ASD - 1 DAY	ASD (2 DAYS)	ISS - 1 DAY	ISS (2 DAYS)
Cell Phones/Personal Devices	Personal Device	Possessing a cell phone, or other personal device (air pods etc), that is turned on, on school property between the first bell or last bell of the school day, or on buses contracted by the District, unless authorized by a school official, is in violation of this rule. Student must be actively using the device to be in violation.	LD - (1 DAY)	ASD - 1 DAY	ASD (3 DAYS)	CONFISCATED *PHONE PLAN - TURN IN PHONE EVERYDAY
<b>THEFT</b>						
Theft	Theft	Taking something that does not belong to you. Stealing, or attempting to steal, private or school property, or receiving school property.	ASD (2 DAYS)	ISS (2 DAYS)	ISS (3 DAYS)	DISTRICT HEARING OR OPTION TO ENROLL INTO STEP PROGRAM (20 DAYS)
Burglary/Breaking and Entering	Second Degree	Burglary in the second degree; A person commits burglary in the second degree by entering or remaining unlawfully in or on a residential structure with the intent to commit any theft or any felony therein.	SUS (10 DAYS) PENDING DISTRICT HEARING	SUS (10 DAYS) PENDING EXPULSION HEARING	★ / ☒ / ▲	
	Third Degree	Burglary in the third degree; 1. Entering or remaining unlawfully in or on a nonresidential structure or in a fenced commercial or residential yard with the intent to commit any theft or any felony therein. 2. Making entry into any part of a motor vehicle by means of a manipulation key or master key, with the intent to commit any theft or felony in the motor vehicle.	SUS (10 DAYS) PENDING DISTRICT HEARING	SUS (10 DAYS) PENDING EXPULSION HEARING	★ / ☒ / ▲	
	First Degree	Such person or an accomplice violates the provisions of either Burglary in the Second and Third Degree and knowingly possesses explosives, a deadly weapon or a dangerous instrument in the course of committing any theft or any felony.	★ / ☒ / ▲	SUS (10 DAYS) PENDING EXPULSION HEARING	★ / ☒ / ▲	
Extortion	Extortion	Knowingly obtaining or seeking to obtain property or services by means of a threat to do in the future.	SUS (10 DAYS) PENDING DISTRICT HEARING	SUS (10 DAYS) PENDING EXPULSION HEARING	★ / ☒ / ▲	

Disclaimer: it is intended that all Page Unified School District handbooks comply with the policies established by the Governing Board of the Page Unified School District. In the event that anything in this handbook conflicts with current district policy, district policy will prevail.

PUSD DISCIPLINE MATRIX GRADES SIXTH THROUGH TWELFTH						
BEHAVIOR	DESCRIPTION	1ST OFFENSE	2ND OFFENSE	3RD OFFENSE	4TH OFFENSE	
★ = POLICE REFERRAL ☒ = THREAT ASSESSMENT ☐ = STUDENT SUPPORT SERVICE REFERRAL ▲ = DCS REFERRAL						
Robbery	Taking any property of another from his person or immediate presence and against his will, such person threatens or uses force against any person with intent either to coerce surrender of property or to prevent resistance to such person taking or retaining property.	SUS (10 DAYS) PENDING DISTRICT HEARING	SUS (10 DAYS) PENDING EXPULSION HEARING	SUS (10 DAYS) PENDING EXPULSION HEARING	SUS (10 DAYS) PENDING EXPULSION HEARING	
Armed Robbery	Armed and Equity	Is armed with a deadly weapon or a simulated deadly weapon.	★ / ☒ / ☐	SUS (10 DAYS) PENDING EXPULSION HEARING	★ / ☒ / ☐	
	Utilized Weapon	Uses or threatens to use a deadly weapon or dangerous instrument or a simulated deadly weapon.	★ / ☒ / ☐	SUS (10 DAYS) PENDING EXPULSION HEARING	★ / ☒ / ☐	
Trespassing	Entering or remaining on school grounds or facilities without authorization and with no lawful purpose including visiting another school while on an out-of-school suspension.	SUS (1 DAY)	SUS (2 DAYS)	SUS (4 DAYS)	DISTRICT HEARING OR OPTION TO ENROLL INTO STEP PROGRAM (20 DAYS)	
<b>VANDALISM OR CRIMINAL DAMAGE</b>						
Destruction of Property	Vandalism of Personal Property	Causing or attempting to cause damage to private or school property, or the repeated damage involving private or school property, including graffiti. This also includes the alteration of student or school computer programs or systems.	ISS (3 DAYS) / COMMUNITY SERVICE	ISS (4 DAYS) / COMMUNITY SERVICE	STEP PROGRAM (20 DAYS) / COMMUNITY SERVICE	SUS (10 DAYS) PENDING DISTRICT HEARING
	Vandalism of School Property		ISS (3 DAYS) / COMMUNITY SERVICE	ISS (4 DAYS) / COMMUNITY SERVICE	STEP PROGRAM (20 DAYS) / COMMUNITY SERVICE	SUS (10 DAYS) PENDING DISTRICT HEARING
<b>WEAPONS AND DANGEROUS ITEMS - BOARD POLICY JICI</b>						
Firearm	Firearms	Carrying, possessing, storing, keeping, leaving, placing, or putting into the possession of another person, any firearm.	SUS (10 DAYS) PENDING EXPULSION HEARING	★ / ☒ / ☐	★ / ☒ / ☐	
Simulated Firearm	Simulated Firearm	An instrument displayed or represented as a firearm and/or perceived by a reasonable person to be capable of causing injury or death given the manner in which it is possessed, controlled, or used. Toy, look-alike, and imitation firearms.	SUS (10 DAYS) PENDING DISTRICT HEARING	SUS (10 DAYS) PENDING EXPULSION HEARING	★ / ☒ / ☐	
Other Weapons	Weapons	Possessing, handling, or transmitting any object or material that is ordinarily considered a weapon, lookalike weapons, or any object that could place a person in reasonable fear of physical harm. Includes, but not limited to knives, razor blades, mace, and pepper spray.	SUS (10 DAYS) PENDING DISTRICT HEARING	SUS (10 DAYS) PENDING EXPULSION HEARING	★ / ☒ / ☐	
Dangerous Items	Dangerous Items		★ / ☒ / ☐	★ / ☒ / ☐	★ / ☒ / ☐	
★ = POLICE REFERRAL ☒ = THREAT ASSESSMENT ☐ = STUDENT SUPPORT SERVICE REFERRAL ▲ = CPS REFERRAL						
LD - LUNCH DETENTION / ASD - AFTER SCHOOL DETENTION / ISS - IN SCHOOL SUSPENSION / SUS - SUSPENDED OFF CAMPUS						

Disclaimer: it is intended that all Page Unified School District handbooks comply with the policies established by the Governing Board of the Page Unified School District. In the event that anything in this handbook conflicts with current district policy, district policy will prevail.

# Section V



## OTHER BUSINESS AND INFORMATION

<b>Page High School Fee Schedule</b>	
Musical Instrument Rental Fee	\$25.00 - \$50.00
Athletic Fee	\$30.00 per sport
Co-curricular Fee (Band, WGI, Choir, Drama, Orchestra)	\$25.00 - \$30.00
Replacement ID badge	\$5.00
National Honor Society & UNITY	\$5.00
Parking Pass	\$5.00
ACT Exam (National Test)	\$60.00
AP Exam	\$98.00
▪ Unused Exam Fee	\$40.00
Skills USA Fees	\$20.00
Trip Fees	\$5.00 - \$450.00
Coconino County Community College Dual Enrollment Classes	\$15.00/college credit
Device Insurance Fee	\$25.00

### **Cafeteria Use/Meal Programs**

Page High School cafeteria serves breakfast and lunch daily. Page Unified School District will provide FREE breakfast and lunch for all students at all PUSD schools for the 2023-2024 school year.

All rules and regulations of Page High School are expected to be followed by students while in the cafeteria. Failure to follow rules may result in a disciplinary referral.

### **School Nurse and Illness**

The high school Health Office is staffed by a Nurse for emergency care, health consultation, and as a resource for students and parents. Specific procedures and permission forms are required for the School Health Office to administer any medications including Over the Counter (ex. Tylenol, ibuprofen); be aware that written orders from the prescribing physician are required if students are to receive prescription medications during school hours. If students become ill and must go home, a student leave permit must be obtained from the school Health Office and presented to the school Attendance Office before leaving campus.

### **Administering Medicine to Students (Board Policy JLCD)**

For occasions when it is necessary for a student to receive a prescription and/or over-the-counter drug during the school day, the following procedure has been established to ensure the protection of the school and the student and to assure compliance with existing rules and regulations:

- The medication must be prescribed by a physician.
- The parent or guardian must provide written permission to administer the medicine to the student.
- Drugs must be kept in a locked container in the Nurse's Office.
- When the physician feels it is necessary for the student to carry and self-medicate, they will provide written recommendation.
- The medication must come to the Nurse's Office in a prescription container.
- **Over-the-counter medication follows the same above rules, but a parent can send written permission for student self-medication (ex. Tylenol, ibuprofen).**

### **Maintain Updated Contact Information**

It is important that any phone or address changes are provided to the school as soon as possible. The school uses an automated call service to communicate important information regarding student attendance, weather related cancellations, and other important information. Teachers also call home for various reasons and current phone numbers make it possible for timely communication. Please see the front office to update and keep your contact information current.

### **Parent-Teacher Conferences**

Academic success is a priority at Page High School. Parents/guardians are encouraged to meet with their student's teacher regarding academic progress and areas of concern. As we are dedicated to student achievement and limit interruptions to classroom instruction, we ask that you please call or email ahead for an appointment.

### **School volunteers**

All parents are invited to volunteer at Page Unified School District, whether you have only a few minutes or more. As parents, grandparents, neighbors and community members, you have ideas, talents and time to share with our students and our schools. It is our belief that volunteer programs are beneficial to everyone involved. These programs also help to foster stronger school/community relationships by creating a common ownership in the success of our schools. They also demonstrate the importance of community service to all involved in the program, especially students. If you wish to volunteer in the district, please check with the District Office to obtain the required paperwork to

ensure that it is completed prior to your beginning any volunteer work within the District.

### **Visitors to schools (Pursuant to Policy KI-R)**

Parents are encouraged to visit the schools. All visitors to any school must report to the school office upon arrival. For those who wish to visit a classroom during the school day, it is preferred that the teacher and the assistant principal be contacted in advance to arrange a day and time for such visit so as to avoid any conflicts with the school schedule.

In visiting a classroom, parents must realize that the teacher's first responsibility is to the class as a whole, and the teacher will be unable to converse at any length with the visitor. If a conference is desired, arrangements will be made by the teacher for an appointment with the parent either before or after school hours.

No person may enter onto school premises, including visits or audits to a classroom or other school activity, without approval by the assistant principal. Neither will any person be allowed to conduct or attempt to conduct any activity on school premises that has not had prior approval by the assistant principal.

Anyone who is not a student or staff member of the District schools, and is in violation of this policy, may be asked to leave the property of the District. Failure to comply with the lawful directions of District officials or of District security officers or any other law enforcement officers acting in performance of their duties, and failure to identify oneself to such officials or officers when lawfully requested to do so, will be against District regulations. Failure to obey such instructions may subject the person to criminal proceedings applicable under law.



## **EXPECTATIONS FOR SCHOOL ENVIRONMENT**

### **Locker usage**

Lockers will be assigned to all students. **NO SPECIFIC LOCKER MAY BE REQUESTED.** Lockers remain the property of the school and as such are subject to search. The student assigned to a locker is considered to be in possession of all contents. Students should not share combinations or allow others use of their locker. **This responsibility rests on the student assigned to that locker.**

### **Backpacks**

Bags including but not limited to backpacks, book bags, purses, drawstring bags, athletic bags may be brought to school and **must be CLEAR.**

### **After-school services**

Students enrolled in **Credit Recapture, Extended Day, Tutorial, or Library Use** may stay Monday through Wednesday, from 3:40 pm to 5:15 pm for academic assistance. Students who wish to take advantage of our extended hour services must arrive at the appointed service area by 3:50 P.M., and must remain in that area until 5:00 P.M. because of safety reasons. Late buses run only for students who have signed in and are using after school services.

### **Masks**

If a mask is worn, it must be clear. According to the latest guidance from the health department, masks are no longer required in our school community. This update reflects current public health data and recommendations aimed at ensuring the safety and well-being of students, staff, and families while allowing for a more comfortable and engaging learning environment.

### **Parking/Student-drivers**

**Students may park in designated student parking in the CAB parking lot.** Parking in an undesignated area may result in a discipline referral and a student's vehicle may be towed away at student's expense; to follow policy and procedures related to motorized vehicles (J-6650 & A.R.S. 15-341). Students are not allowed to park in staff or visitor parking in front of Page High School. Students who have release time 1st period should park in the front parking lot by the practice baseball field and enter campus through the main office entrance.

All students driving to school will be required to register their vehicles by providing a copy of their driver's license, license plate number and proof of insurance as well as their school ID. Once driver's license and license plate numbers are provided, students will be given a parking pass. Students must pay a parking pass fee of \$5.00 in order to be issued their parking pass. Students are required to keep their parking pass in a visible location in the front windshield of their vehicles.

Students will not bring any motorized vehicles on any campus in the District other than the high school campus (J-6650 ARS 15-341). Students will not be permitted in the school parking lots during the instructional day (exception-Lunch break). Students are expected to follow all rules of driving and speed requirements in school parking areas. Violation of these may result in a disciplinary referral. Page High School will make efforts to coordinate Driver Safety Training with the Page Police Department.

**Parking Rules** Parking is a privilege. Loss of parking privileges may result from, but are not limited to the following: Driving recklessly, transporting alcohol, illegal substances, or dangerous weapons, leaving campus without office approval, Transporting students off campus that should otherwise be on campus, Defiance of any staff member while on campus. Students park at your own risk. Page High School is not responsible for vehicular damage, theft, and loss of property or expenses/damages from towing. "Students who drive vehicles to school will park at their own risk and must understand that neither the school nor the Governing Board can be held responsible for the vehicle."

### **Guidelines for Bicycles, Skateboards, Rollerblades and Scooters**

For the safety of all students and to prevent damage to school property, the riding of bicycles, skateboards, rollerblades, and/or scooters is prohibited on campus.

Students are permitted to ride the above modes of transportation to school, but must not ride them on the school campus. During the school day, bicycles and scooters must be chained up to the bike rack.

Students who violate this rule will receive a disciplinary referral. Page Police may be contacted. Such items may be confiscated and released to the parent/guardian.

### **Meal Programs/Guidelines for Cafeteria Use**

Young people need healthy meals in order to experience proper physical (body) and cognitive (brain) development. Page Unified School District will be participating in the National School Lunch Program and the School Breakfast Program. As part of this program, Page High School will offer healthy meals every school day at no cost to students due to the implementation of the Community Eligibility Provision. Students will be able to enjoy these meals without having to pay a fee or submit a household application. This year all Page High School students will receive free breakfast and lunch daily. Adults visiting for lunch or breakfast, however, will need to pay the normal adult price for meals.

The high school lunch program uses the student's ID number in place of a breakfast/lunch ticket. For this, and other purposes, it is important that students make an effort to remember their student ID number.

*Disclaimer: it is intended that all Page Unified School District handbooks comply with the policies established by the Governing Board of the Page Unified School District. In the event that anything in this handbook conflicts with current district policy, district policy will prevail.*

## Closed Campus

Once students arrive on school district property, including school buses, they are to remain on campus until school releases at 3:40pm. The only exceptions are:

- Scheduled lunch time. Off campus lunch is a privilege not a right and can be revoked.
- Scheduled release time (Seminary, College)

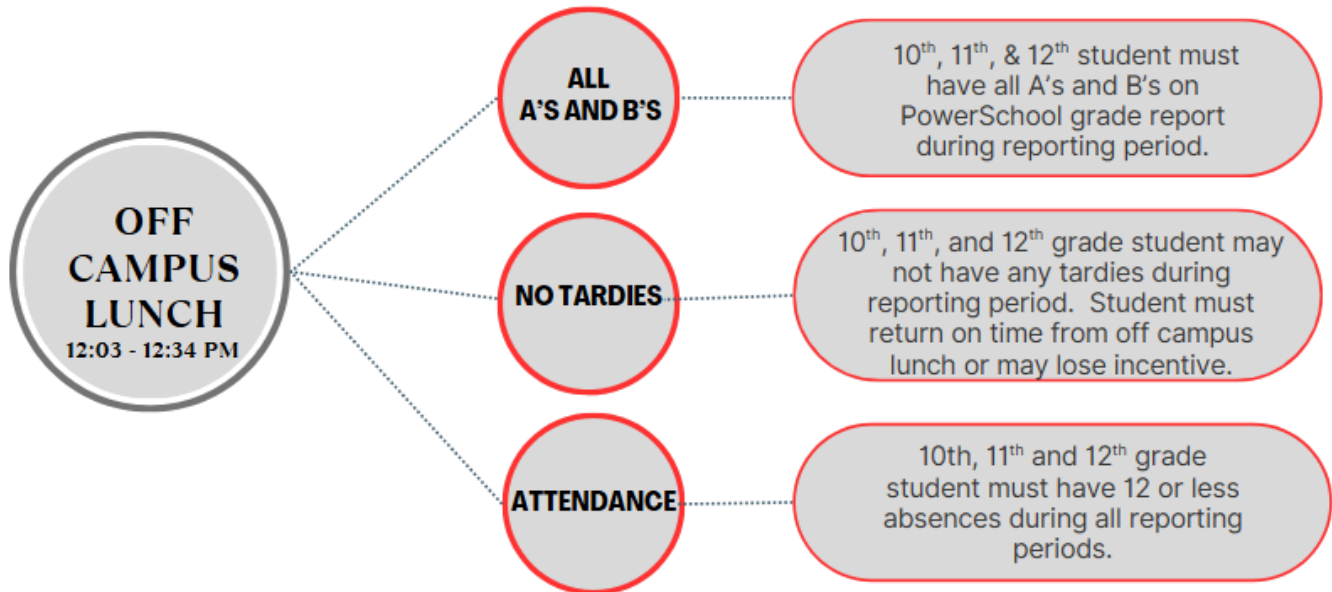
Students with scheduled release time and students who wish to exit campus at lunch must have a "Parents Request for Release from School - Waiver, Release of Liability and Indemnification" form signed and on file. Students who are tardy three times in one semester after returning from lunch will have their off campus lunch privileges revoked for a period of ten school days.



# Off-campus Lunch Eligibility

## How do I earn off-campus lunch?

Students **must meet all 3 criteria** to be eligible for off-campus lunch.



Reporting period: Thursday prior to eligibility week.

No off-campus lunch first week of school and scheduled dates. \*\*\* finish lunch prior to returning

## **Food and Drink**

Food on campus should be limited to lunch time. During lunch time, food is allowed in Page High School buildings with the expectation that the area remains clean. Page Unified School District has put an extensive amount of work and resources into keeping Page High School clean; therefore, it is important to show respect by cleaning up.

Continued violation of the food and drink rules will result in disciplinary action and the privilege may be revoked school-wide.

Students may bring their own lunch to school and store it in an area designated by the classroom teacher. The school does not accept "special deliveries" of food or gifts; including Door Dash, Uber Eats or any food deliveries.

## **ID Cards**

Each Page High School student shall receive a student ID card at the beginning of the school year.

Student ID is **required** in the following situations:

- While on campus during school hours.
- To enter a school sponsored dance.
- To check out a book at the library.
- To check out textbooks.
- To use computers in the library.
- To receive scores, transcripts, class schedule, and diplomas.
- To receive student discounts.

Lost ID cards must be replaced at the library immediately. Replacement will incur a fee of \$5.00 to be paid at the bookstore.

## **PHS Dance Rules**

All school and district rules, policies and regulations are in place during PHS dances and other activities. Additional guidelines are enforced to maintain an appropriate environment:

- **All students must present their current PHS student ID.**
- Clothing cannot be considered obscene and must follow the PHS dress code.
- Dancing must remain within acceptable boundaries and avoid provocative movement:
  - No pelvic thrusting or mimicking sexual activity.
  - Hands should be kept in appropriate places.
  - Any chaperone has the right to deem any form of dancing inappropriate.
- Once a student enters a dance, they must remain in the dance location. If a student leaves the dance location for any reason, they will not be allowed to re-enter the dance.
- Moshing, flipping, pushing, or slam dancing is not acceptable.

- Offenders may be removed from the dance. They may be asked to not attend the next school dance or banned from attending any dances at Page High School for the rest of the school year.
- Allowed dance attendees are as follows:
- Prom > 11th and 12th graders only and one approved guest either within one cohort year of the current graduating class or enrolled in another educational system (virtual, home schooled, high school)
- All other dances an enrolled PHS student and one approved guest enrolled in another educational system (virtual, home schooled, high school)
- The PHS student and guest must complete the approved paperwork at least one week prior to the date of the dance so that the necessary vetting process can take place.
- The PHS student accepts the consequences of their guest if any student handbook violations occur including but not limited to forfeiting the ability to attend any other dances the remainder of the school year.

### **Assembly Conduct**

Students must sit in the section provided for their class. Students who do not conduct themselves properly will be removed from assemblies and banned from future participation.

### **Inclement Weather**

At certain times of inclement or bad weather, PUSD may find it necessary to alter the schools' schedules for the safety of students. If you suspect the possibility of this, the following media are available to help us communicate:

- Emergency Weather Hotline – 928-608-4100 (Option 1)
- District Web Page – [www.pageud.org](http://www.pageud.org)

In cases of prolonged inclement weather, the District may cancel school. If a school day is canceled, it may be made-up on a future date, if the required minutes are not met.

### **Military Recruitment Information**

Federal law requires the Page Unified School District to provide names, addresses and telephone numbers of high school students to military recruiters and institutions of higher education that request this information. While we are committed to protecting the confidentiality of our students, we must comply with the law.

If you do not want your child's name and contact information disclosed to military recruiters and/or institutions of higher education, you must click "No" under the "Military and College Recruitment Acknowledgement" question on the online registration form.

### **Directory Information**

Page High School routinely releases directory information such as a student's name and address. Students who request privacy in such matters must make these requests in writing to the school.

### **Property Damage- Liability**

**Student Liability** - Students have the responsibility to protect school property, equipment, books and other materials issued to or used by them in the instructional process. Students who deface or otherwise damage school property may be suspended or expelled from school.

**Parent Liability** - Under Arizona law, parents are liable for damage done to school property by their children. Parents will be notified and charged for the cost of such damage.

### **Student Accident/Emergency Transportation**

A student requiring emergency medical treatment from the Page Emergency Medical Technicians (EMT) may be transported by the Page EMT Squad to a local medical facility. Parents are financially responsible for treatment/transportation.

### **Fire Alarms / Evacuations**

When the FIRE ALARM sounds, students should evacuate the building in an orderly, quiet manner and follow the instructions of those in charge. Students should not stand on paved areas where emergency vehicles may need to pass. Students reporting and/or creating false fire alarms will be subject to disciplinary action from the administration and possible fines/charges from law enforcement.

### **Hall Passes**

Students are expected to remain in class during the entire instructional period. Leaving class should be an extremely rare occurrence. When a student receives permission from a teacher to leave the class, they must be sure to obtain a pass from the teacher and be prepared to show this pass whenever requested by anyone in authority. A student with no pass will be considered to be out of class without permission. This may result in disciplinary action.

### **Lost and Found, Loss or Theft**

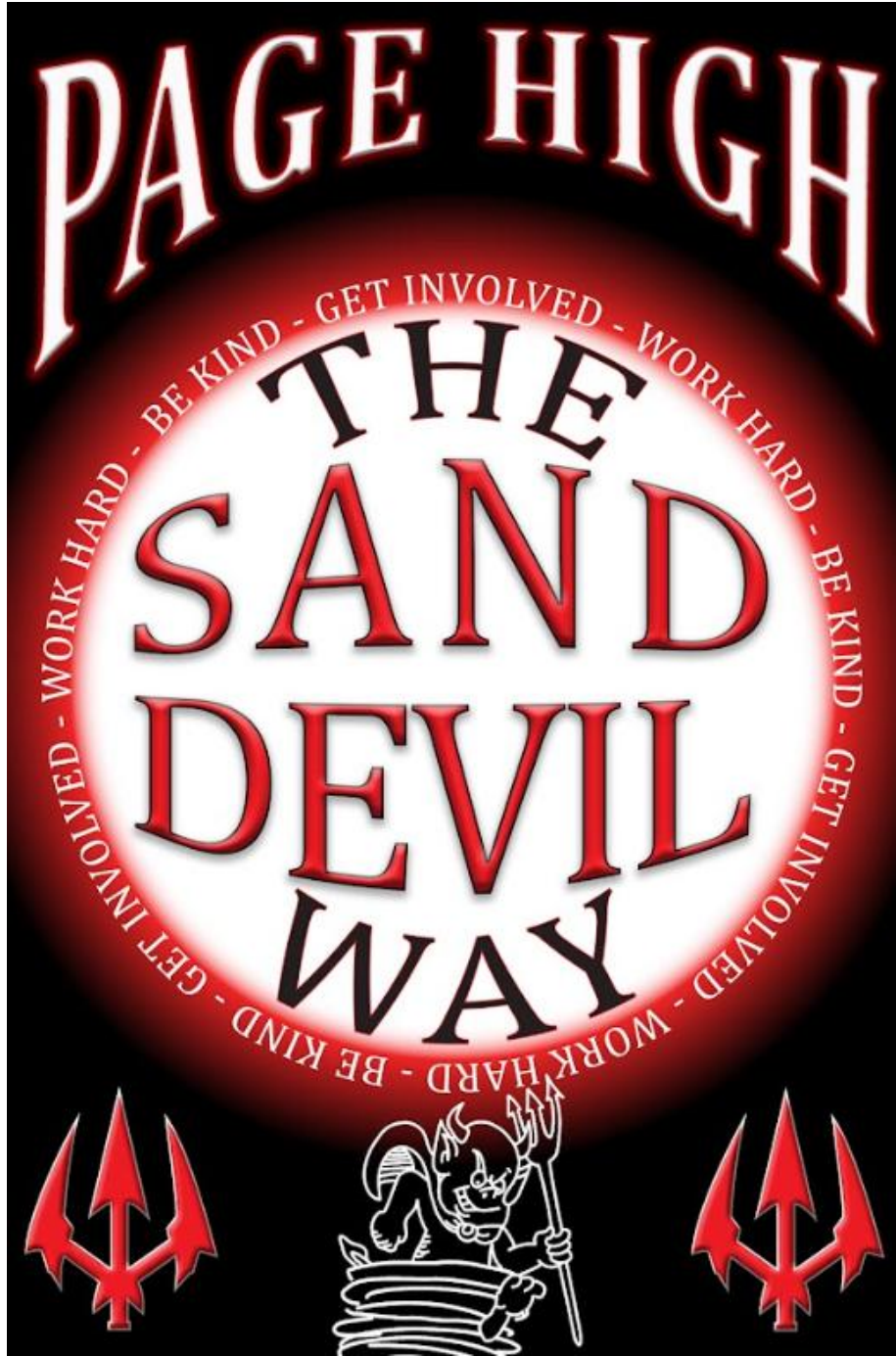
Any item should be reported to Administration immediately. Any item found should be taken to the Attendance Clerk. **Page HS and PUSD are not responsible for personal items lost, damaged or stolen.**

### **Signs and Posters**

Student Club or Organizations or persons desiring to display posters must have authorization by an administrator. All posters, decorations and tape must be

*Disclaimer: it is intended that all Page Unified School District handbooks comply with the policies established by the Governing Board of the Page Unified School District. In the event that anything in this handbook conflicts with current district policy, district policy will prevail.*

removed by 8:00 a.m., the school day following the activity. Publicity for election campaigning must follow the rules of good taste. Posters can only be placed in designated areas.



*Disclaimer: it is intended that all Page Unified School District handbooks comply with the policies established by the Governing Board of the Page Unified School District. In the event that anything in this handbook conflicts with current district policy, district policy will prevail.*

# Section VI



## TRANSPORTATION INFORMATION

### GUIDELINES FOR BUS USE

**Once a student is on the bus, they cannot be taken off.** If there is a change in their travel plans, please inform your student before they leave for school and their school of attendance must be notified. Notes to the bus driver are not accepted. Messages to students to change plans must be received before 2:00 pm Mondays, Tuesdays, Wednesdays and Thursdays to make it to the student. If you have an issue with a driver, do not board the bus in a confrontational manner, but rather go around to the driver side window, or call the Transportation Director (982-608-4121) for assistance.

Arizona State Codes R17-9-104 states "During the time of loading or unloading of passengers at designated school bus loading areas at the school, the loading area is restricted to school buses, passengers and school employees assisting in the loading or unloading of passengers. This means that parents and relatives are not allowed in the bus loading area. Please park in the parking lot or wait in the school office for your child.

Page Unified School District transportation is not public transportation; therefore, to prevent overcrowding as well as accountability, all students will be assigned a bus route based on their residential area. Do not transport students to another bus stop to catch the bus.

School bus passenger Rules:

- No food or drinks are allowed (this includes gum). Water is acceptable.
- Classroom behaviors apply.
- Bus driver will assign seats.
- Possession or use of drugs is prohibited.
- Remain properly seated "Bottom to Bottom, Back to Back, Feet to Floor" keeping aisles clear.
- Do not use profane or obscene language.
- Keep all parts of your body inside the bus at all times.
- Talk quietly. Do not yell or make other loud noises.
- Respect the rights, property and safety of others.
- Do not destroy property. You will be responsible for the cost of repairs.
- Fighting will result in immediate revocation of bus riding privileges pending a parent conference.
- Do not distract the bus driver, as you are jeopardizing the safety of others.
- Musical instruments and skateboards must be under your control at all times while not occupying a seat.

### **Transportation provided by the School Is a Privilege - Not a Right.**

Student behavior on a school/activity bus should be the same as that in a well-ordered classroom with the exception that students are free to talk in a low voice. Disorderly conduct or refusal to respect the authority of the driver shall be

*Disclaimer: it is intended that all Page Unified School District handbooks comply with the policies established by the Governing Board of the Page Unified School District. In the event that anything in this handbook conflicts with current district policy, district policy will prevail.*

sufficient reason for the student to receive a discipline referral. This includes transportation to and from school, athletic/activity school events, field trips, and the late bus.

When unsafe, inappropriate or unacceptable behavior occurs on the bus, the bus driver will issue a referral and refer the student(s) to the office. School officials will enforce policy when taking the following action:

- On the first incident, the driver will verbally reprimand and explain the violation.
- If the violation is repeated, the incident will be investigated and the proper disciplinary actions will be taken.
- Any serious violation may result in an immediate long-term suspension from bus privileges on the first referral.

Major incidences or multiple incidences and referrals can result in suspension or revocation of bus privileges. Students whose transportation privileges have been revoked are still expected to attend school on a regular basis, and it is the parent's responsibility to provide such transportation. Good citizenship does not stop at the bus door. Reference ARS 15-341 EEAE bus safety/JIC- student conduct.

**Students who do not attend one or more classes due to truancy may be denied access to bus transportation that day. Students who misuse school transportation may receive disciplinary consequences.**

## **BUS ROUTES PROVIDED BY PUSD**

### **5:05 pm Activity Route Detail**

Students who ride the 5:00 bus Route must be with a faculty member after school who will place them on a bus list. Students must be on a proper bus list signed by a faculty member to gain access to the 5:00 bus.

The Page Unified School District offers transportation after school to all eligible students approved to ride, but due to numbers of students riding, the size of the District, and time constraints, we cannot offer the same service as a regular school route.

If your child will be riding the Late Activity Bus for the first time, please familiarize yourself with the following schedules and service areas to facilitate the pickup of your children.

**If your student does not arrive home at the appropriate time, our staff is available until 4:30 pm.**

**After 4:30 pm, please contact transportation at (928)608-4121 or (928)608-4131.**

### **5:05 PM Departure Times from High School Tutoring and Library only**

*Disclaimer: it is intended that all Page Unified School District handbooks comply with the policies established by the Governing Board of the Page Unified School District. In the event that anything in this handbook conflicts with current district policy, district policy will prevail.*

### **Route #10 Lechee/Coppermine /Cedar Ridge/Late Activity Route Approved Stops**

- Industrial Drive
- Gloria's
- Next Entrance
- Bennetts'
- Allison's Mobile Home Park: First entrance, Second Entrance
- NHA Housing: First Entrance
- Stops along Coppermine Road towards Gap
- Stop at MP 505 Old Cedar Ridge Trading Post, turn around at MP 507, drop and proceed to MP 506.5, MP 505 (west side) and return

### **Route #11 &/or Route 19 (overload bus)**

#### **Kaibeto Store Overload, 6:00 PM Route**

#### **Kaibeto and Crossroads/Inscription House Late Activity Route Approved Stops**

- Stops at Highway Stops along 98, as needed to Kaibeto
- Kaibeto: Kaibeto Store
- Stops at Highway Stops along 98, as needed to Crossroads Store
- Last Stop: Inscription House/Crossroads: Crossroads Store
- Turn around Crossroads Store, return to Page

### **Route 12 - Apts in Town/Highway 89, 89A/Bitter Springs/Marble Canyon Late Activity Route Approved Stops**

- Vermillion View
- Whispering Sands
- Ranchettes (Elk and Palomino)
- Stops at Highway, stops along 89 turn right on 89A, bead stand (MP525) for Marble Canyon, turn around, stops Bitter Springs Housing's main entrance.
- Stop at highway, stops on 89 towards Cedar Ridge, turn around at MP 510.8 (Homer residence) and return.

### **6:10 PM Departure Times from High School**

#### **Athletics Only**

#### **Route 3 Lechee/Coppermine/Cedar Ridge/Late Activity Route Approved Stops**

- Industrial Drive
- Gloria's
- Next Entrance
- Bennett's'
- Allison's Mobile Home Park: First entrance, Second Entrance
- NHA Housing: First Entrance
- Stops along Coppermine Road towards Gap
- Stop at MP 505 Old Cedar Ridge Trading Post, turn around at MP 507, drop and proceed to MP 506.5, MP 505 (west side) and return

#### **Route 4 Kaibeto and Crossroads/Inscription House Late Activity Route Approved**

- Stops at Highway Stops along 98, as needed to Kaibeto
- Kaibeto: Kaibeto Store
- Stops at Highway Stops along 98, as needed to Crossroads Store
- Last Stop: Inscription House/Crossroads: Crossroads Store
- Turn around Crossroads Store, return to Page

### **Route 12 - Apts in Town/Highway 89, 89A/Bitter Springs/Marble Canyon Late Activity Route Approved Stops**

*Disclaimer: it is intended that all Page Unified School District handbooks comply with the policies established by the Governing Board of the Page Unified School District. In the event that anything in this handbook conflicts with current district policy, district policy will prevail.*

- Vermillion View
- Whispering Sands
- Ranchettes (Elk and Palomino)
- Stops at Highway, stops along 89 turn right on 89A, bead stand (MP525) for Marble Canyon, turn around, stops at Bitter Springs Housing's main entrance. Stop at highway, stops on 89 towards Cedar Ridge, turn around at MP 510.8 (Homer residence) and return.

# Section VII



## GUIDELINES FOR COMPUTER USE

The purpose of the computer network is to enhance student education and it should only be used for this purpose. Outside chat rooms are NOT considered appropriate use for the network. Students may not use the computers for private, commercial, political or religious reasons. Computers may not be used for illegal purposes or to access obscene, pornographic or satanic materials. Students who come across inappropriate materials should leave the area immediately and inform the PHS staff.

Please respect the rights and property of others. Do not share the computer you have been assigned with other students. You will be held responsible and possibly lose your computer privileges. You are responsible for making back-up copies of documents critical to you. You are not allowed to save your documents to the hard drive of the computer. Please bring a flash drive of your own to save any information. It is unlawful to copy software from the school computer or load any programs onto the school computers.

E-Mail is provided thru Google for exchanging information for educational uses only. The school computer is not the place for private, personal correspondence.

The video or audio recording of any person(s) on school or district property and or distribution of any audio or video recording of any person(s) is not permitted without express written permission from school administration and is only permitted for school related activities.

### **Acceptable Use**

I will use the technology resources to support personal educational objectives within the educational goals and objectives of the school district. I will use electronic information resources for educational purposes only. Inappropriate use may result in cancellation of use of information services and/or appropriate disciplinary action. I will not submit, publish, display, or retrieve materials forbidden by statutes, laws, or District policies and regulations. I will abide by all copyright regulations.

I will abide by such rules as adopted by Page Unified School District including the Page Unified School District Technology Resources Acceptable Use Policy.

I will not use district technology resources to submit, publish, display, or retrieve any defamatory, inaccurate, abusive, obscene, profane, sexually oriented, threatening, racially offensive, or illegal material.

### **Network Security**

I will not attempt to harm, modify or destroy hardware or software, or interfere with system security.

*Disclaimer: it is intended that all Page Unified School District handbooks comply with the policies established by the Governing Board of the Page Unified School District. In the event that anything in this handbook conflicts with current district policy, district policy will prevail.*

I understand that if I am issued a network user account, I may not share that account with anyone or leave my account open or unattended. Accounts and passwords will be kept confidential and not accessible to others. Passwords are required to be changed regularly, using combinations of letters and numbers and avoiding Standard English words and names. I am required to take all responsible precautions to prevent the use of network user accounts by unauthorized persons.

### **Network Services**

The District has the right to review any material stored on any system provided by the District and to edit or remove any material. I hereby waive any right that I may otherwise have to such material.

Page Unified School District reserves the right to log the use of all systems and monitor file-server space utilization. Should it become necessary, files may be deleted, accounts may be closed, and access may be denied.

IJND-R ©  
REGULATION

### **TECHNOLOGY RESOURCES (Movies/Videos/Electronic Materials)**

Movies, videos and electronic materials with ratings other than for general audiences of all ages are not to be shown in classrooms or at any District facility (this includes buses and motels where students are present) except when:

- A. The movie, video or electronic material has been previewed by the teacher or other certificated staff member.
- B. The movie, video or electronic material has been determined to not contain material that is objectionable or inappropriate for the age group to which it is intended to be shown.
- C. The responsible school administrator has approved the use of the movie, video or electronic material prior to its showing.
- D. The teacher or other certificated staff member has provided advance notification to each student's parent(s), or other responsible adult, of the title of the movie, video or electronic material and the date on which it will be shown.
- E. When a movie, video or electronic material has a rating the above advance notification will include the rating and the source providing the rating.
- F. A student whose parent(s) or other responsible adult has provided notice of their disapproval will not be permitted to view the movie, video or electronic material.

Parents or guardians have the right to have advance access to instructional materials, learning materials and activities currently in use, or

*Disclaimer: it is intended that all Page Unified School District handbooks comply with the policies established by the Governing Board of the Page Unified School District. In the event that anything in this handbook conflicts with current district policy, district policy will prevail.*

being considered for use, in the District.

Parents have the right to request that their child not view any movie or video, regardless of its rating or the purpose for which it is to be shown.

A parent or guardian who objects to any learning material or activity on the basis that it is harmful includes objection to a material or activity because it questions beliefs or practices in sex, morality, or religion or, because of sexual content, violent content, or profane or vulgar language, may request to withdraw that student from the activity or from the class or program in which the material is used and request an alternative assignment.

In accordance with School board policy ILND-R Movies, videos, and electronic materials with ratings other than for general audiences of all ages are not to be shown in classrooms or at any district facility without signed written permission from the student's parent or guardian and approval by the school administration.



## PowerSchool Parent and Student Portal

The PowerSchool Parent and Student Portal gives parents and students access to real-time information including attendance, grades and detailed assignment descriptions. PowerSchool is a powerful communication tool that keeps everyone connected: Students stay on top of assignments, parents are able to participate more fully in their student's progress, and teachers can use their gradebook to make decisions on what information they want to share with parents and students. The teacher's gradebook is a "snapshot" and does not always accurately reflect the student's overall progress or performance. If you have questions regarding an assignment, you can always email the teacher.

### How to Log into PowerSchool - Student and Parent Portal

<https://pageunified.powerschool.com/public/home.html>

PowerSchool SIS

### Student and Parent Sign In

Sign In | **Create Account**

Username

Password

[Forgot Username or Password?](#)

Sign In

**First-time access;  
Create an Account**

**Enter in PowerSchool  
Username and Pass-**

PowerSchool username and PowerSchool passwords are provided by the Attendance Clerk and/or Registrar. You may call (928) 608-4135.

PowerSchool SIS

### Create Parent Account

**Parent Account Details**

First Name

Last Name

Email

Re-enter Email

Desired Username

Password

Re-enter Password

Password must: At least 8 characters long

**Link Students to Account**

Select the Access ID, Access Password, and Relationship for each student you wish to add to your Parent Account

Student Name

Access Code

Access Password

Your Relationship to Student

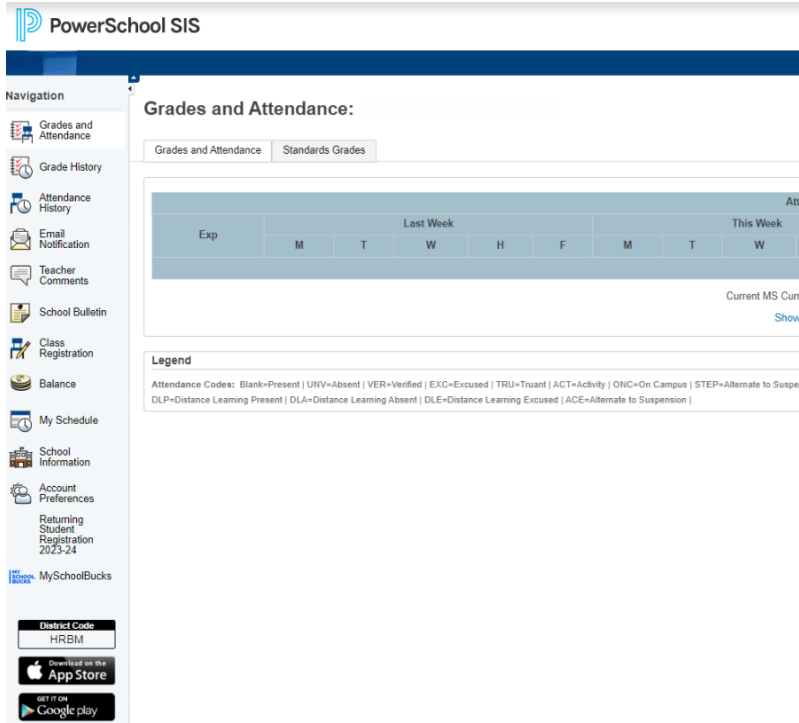
Student Name

**Enter your personal  
information and choose a  
username and password**

**Enter your child's name  
exactly as it appears in the  
email you received**

**Enter the access code and  
password from the email**

*Disclaimer: it is intended that all Page Unified School District handbooks comply with the policies established by the Governing Board of the Page Unified School District. In the event that anything in this handbook conflicts with current district policy, district policy will prevail.*



This portal is a great way to discuss your students' progress, attendance and discipline issues. Grades are posted to the Parent Portal by the teachers. The teacher's grade book is a "snapshot" and does not always accurately reflect the student's overall progress or performance. If you have questions regarding an assignment, you can always email the teacher.

**Your Username and Password is unique to your child. Please keep these logins confidential so that only you and your child(ren) can access their information.**



**SECTION VIII**

**Page High School Student Handbook Acknowledgement**

Student Name:			
Grade:		Student ID#	

I acknowledge that the Page High School Student Handbook containing school and district policies is available online at the Page High School and PUSD websites and that I can access this information online.

**STUDENT RIGHTS**

- Students have the right to a quality education in a clean, safe environment.
- Students have the right to be clearly informed about any rules for which they will be held accountable, to be informed of any charges which may be made against them, and ask for consideration of special circumstances.
- Students have the right of privacy of person, and freedom from unreasonable search and seizure of property unless school employees have reason to suspect that the health, safety, or welfare of students may be in danger.
- Students have a right to present a complaint or grievance when rights are violated by following the procedures outlined in the 2024 - 2025 Page High School Student Handbook.

**STUDENT RESPONSIBILITIES**

- Students have a responsibility to promote a clean, safe environment where a quality education can be delivered.
- Students have a responsibility to be informed of and follow the school's code of conduct outlined in the 2024 - 2025 Page High School Student Handbook.
- Students have a responsibility to avail themselves of a quality education by attending school regularly, completing assigned school work, and asking for consideration of special circumstances.
- Students have the responsibility to comply with the Page Unified School District Technology Resources Acceptable Use Policy as outlined in the 2024-2025 Page High School Student Handbook. Violation of this Policy may

*Disclaimer: it is intended that all Page Unified School District handbooks comply with the policies established by the Governing Board of the Page Unified School District. In the event that anything in this handbook conflicts with current district policy, district policy will prevail.*

constitute a criminal offense and result in disciplinary action and revocation of their use of district technology resources.

**STUDENT LIABILITIES**

- Students are liable for conduct that interferes with the educational process at Page High School.
- Students will be subject to disciplinary procedures outlined in the 2024-2025 Page High School Student Handbook when they violate the school's code of conduct.

**SIGNATURES:**

**I understand that I am responsible for READING the 2024-2025 Page High School Student Handbook. I also understand that I will be held accountable for the rights, responsibilities, and liabilities outlined in it.**

\_\_\_\_\_

Student Signature

\_\_\_\_\_

Date

I have READ the 2024-2025 Page High School Student Handbook. I understand that my child will be held accountable for the rights, responsibilities, and liabilities outlined in it.

\_\_\_\_\_

Parent/Guardian Signature

\_\_\_\_\_

Date

# Page High School Student Handbook Acknowledgement

Student Name:			
Grade:		Student ID#	

I acknowledge that the Page High School Student Handbook containing school and district policies is available online at the Page High School and PUSD websites and that I can access this information online.

## STUDENT RIGHTS

- Students have the right to a quality education in a clean, safe environment.
- Students have the right to be clearly informed about any rules for which they will be held accountable, to be informed of any charges which may be made against them, and ask for consideration of special circumstances.
- Students have the right of privacy of person, and freedom from unreasonable search and seizure of property unless school employees have reason to suspect that the health, safety, or welfare of students may be in danger.
- Students have a right to present a complaint or grievance when rights are violated by following the procedures outlined in the 2024 - 2025 Page High School Student Handbook.

## STUDENT RESPONSIBILITIES

- Students have a responsibility to promote a clean, safe environment where a quality education can be delivered.
- Students have a responsibility to be informed of and follow the school's code of conduct outlined in the 2024 - 2025 Page High School Student Handbook.
- Students have a responsibility to avail themselves of a quality education by attending school regularly, completing assigned school work, and asking for consideration of special circumstances.
- Students have the responsibility to comply with the Page Unified School District Technology Resources Acceptable Use Policy as outlined in the 2024-2025 Page High School Student Handbook. Violation of this Policy may constitute a criminal offense and result in disciplinary action and revocation of their use of district technology resources.

*Disclaimer: it is intended that all Page Unified School District handbooks comply with the policies established by the Governing Board of the Page Unified School District. In the event that anything in this handbook conflicts with current district policy, district policy will prevail.*

**STUDENT LIABILITIES**

- Students are liable for conduct that interferes with the educational process at Page High School.
- Students will be subject to disciplinary procedures outlined in the 2024-2025 Page High School Student Handbook when they violate the school's code of conduct.

**SIGNATURES:**

**I understand that I am responsible for READING the 2024-2025 Page High School Student Handbook. I also understand that I will be held accountable for the rights, responsibilities, and liabilities outlined in it.**

\_\_\_\_\_

Student Signature Date

I have READ the 2024-2025 Page High School Student Handbook. I understand that my child will be held accountable for the rights, responsibilities, and liabilities outlined in it.

\_\_\_\_\_

Parent/Guardian Signature Date

**Return signed acknowledgement to Page High School.**