

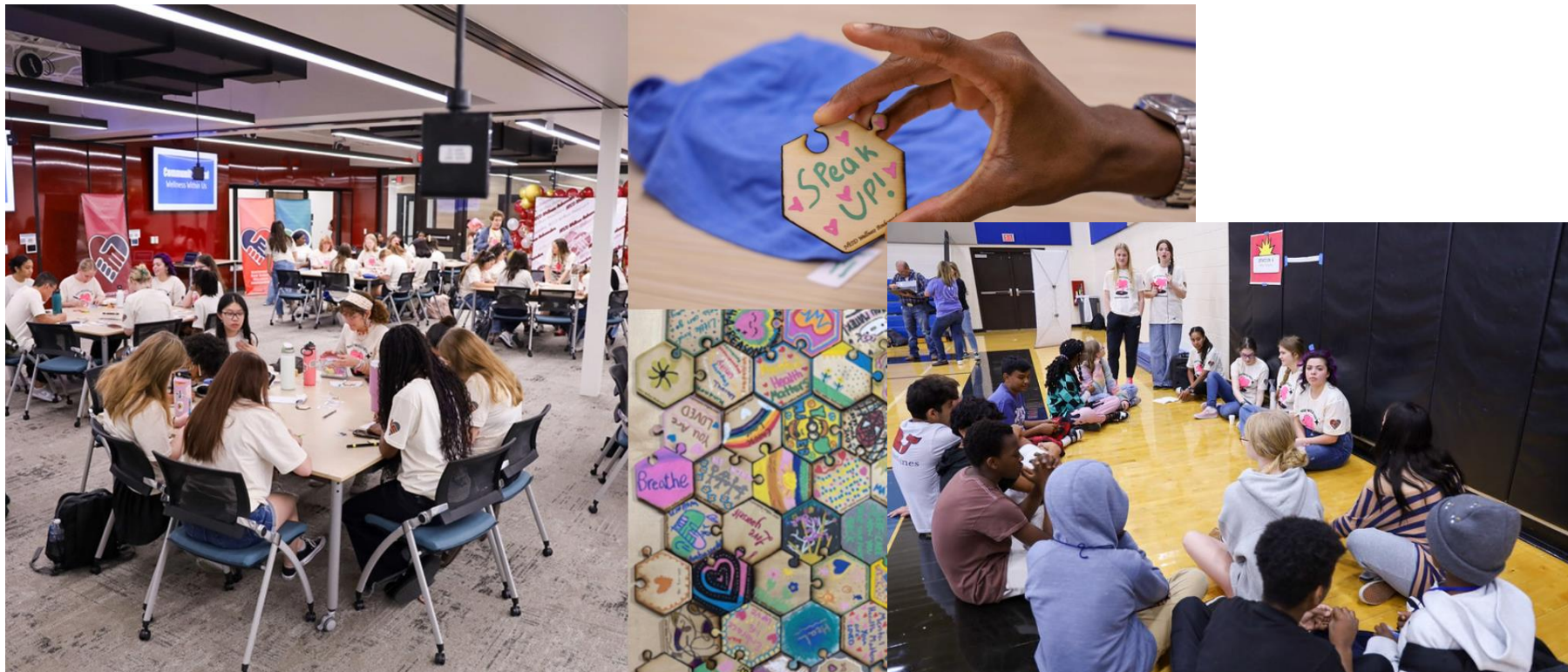


# **NORTHWEST ISD**

## **GUIDANCE & COUNSELING**

District Effectiveness Report - June 9, 2025

# Wellness Ambassadors: The Summit & Red Ribbon Week



## Met the State's Goal for 2025

- In February, five NISD employees completed the training to become trainers.
- Currently, 29% of NISD teachers and staff are trained.
- Offering 20 sections of YMHFA this summer for 600 more to be trained.



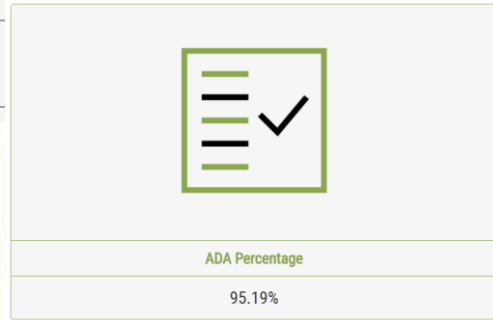
\*Must have 25% trained by 2025-26, 50% by 2026-27, 75% by 2027-28, & 100% by 2028-29



# Average Daily Attendance

2016	96%
2017	96.1%
2018	95.8%
2019	96.1%
2020	96% (no ADA calculated for 5 <sup>th</sup> and 6 <sup>th</sup> Six Weeks)
2021	96.4% (Covid-19 Remote)
2022	94%
2023	94.7%
2024	94.7%
2025	95.2%

School Start Date : 08/14/2024



# ONBOARDED NEW PLATFORM



- Provides a district and campus dashboard for administrators to monitor chronic absenteeism, truancy, and attendance for credit
- Automated intervention templates
- Print, email, text with read receipts and reminders



# TRUANCY INTERVENTION



# RaaWeek12

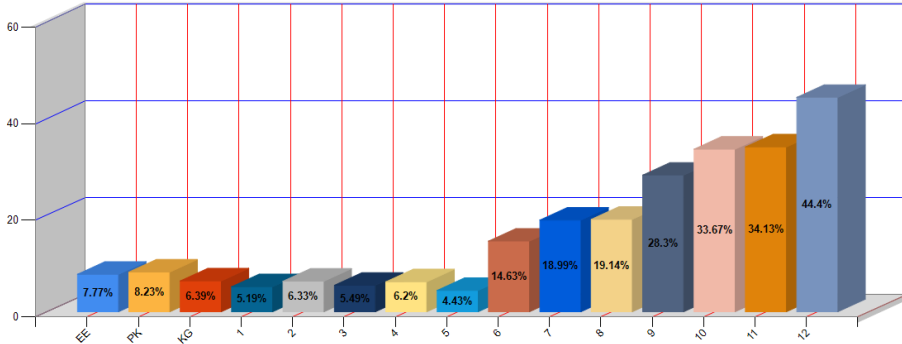
## ATTENDANCE+

Students referred for truancy intervention counseling:

2024-25: 909  
 2023-24: 866  
 2022-23: 582

For Unexcused Absences > 9	
District Enrollment (Active + In-Active Students):	34,020
District Truant Absenteeism Goal:	15.00%
Maximum Truant Student Count to not exceed the goal:	5,103
District's Current Truant Absence Rate on 05/13/2025:	<b>16.67%</b>
District's Current Students who are Truant on 05/13/2025:	<b>5,672</b>
Last Year's Truant Rate on 05/13/2024:	<b>17.73%</b>
Last Year's Truant Count on 05/13/2024:	5,817

Truant Rate% For Grade Enrollment - ( combined Day )



# School Climate & Bullying Survey

## Secondary Student Responses



How strongly do you agree or disagree with the following statements?

23-24

24-25

### PRIDE

I am proud to be a **student** at my school.

3.57

3.52

### BELONGING

I feel like I am a part of my school. I belong.

3.56

3.49

### RESPECT

At my school, **students** treat others who are different from them with respect

2.91

2.85

### SUPPORT

My **teachers** support and care about me.

3.84

3.85

### FAIRNESS

At my school, **teachers and other school staff** treat all students with respect.

3.74

3.65



# of Responses

7,167

# of Responses

11,797

65% Increase

## Elementary Student Responses



How strongly do you agree or disagree with the following statements?

24-25

### PRIDE

I am proud to be a **student** at my school.

2.77

### BELONGING

I feel like I "fit in" at my school. I belong.

2.55

### RESPECT

At my school, **students** treat others who are different from them with respect

2.31

### SUPPORT

My **teachers** help me and care about me.

2.87

### FAIRNESS

At my school, **teachers and other school staff** treat all students with respect.

2.80



# of Responses

7,167



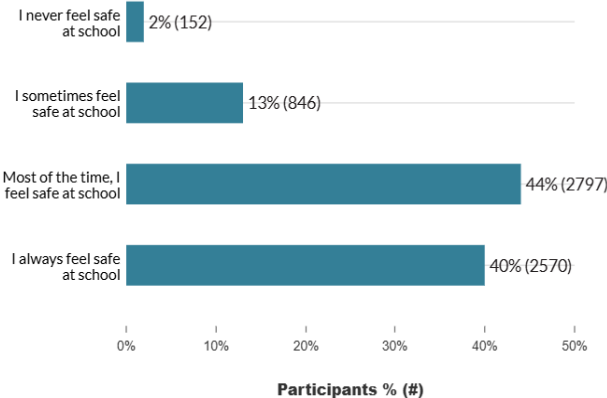
# School Climate and Bullying Survey

## How safe do you feel at school?

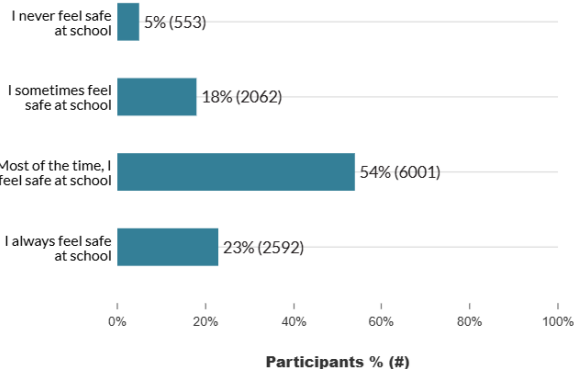
Elementary - 84%

Secondary - 78%

How safe do you feel at school?



How safe do you feel at school?



Secondary - 72% (2024)



# School Climate and Bullying Survey

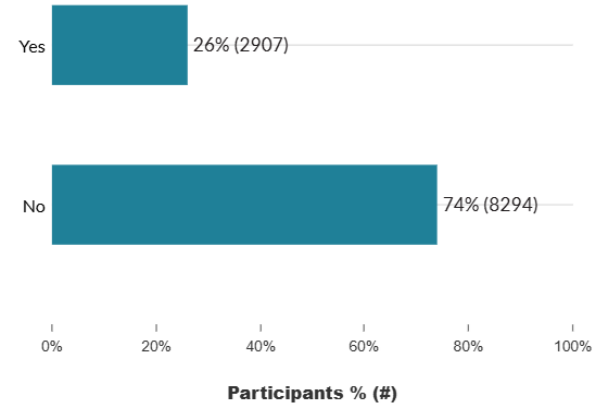
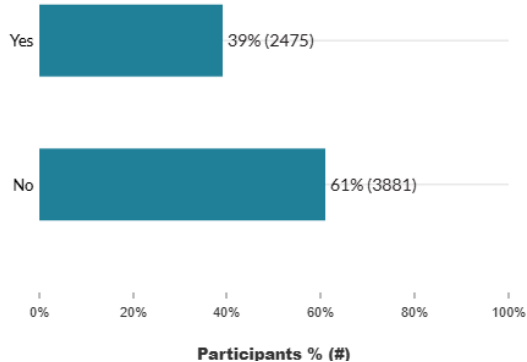
## Have you been bullied by other students?

Elementary - 39%

Secondary - 26%

Within the school year, have you been bullied by other students? Bullying is when one or more kids keep being mean to another kid in a way that shows they have more power, like being stronger, more popular, or trying to scare them. Usually kids that are being bullied are scared. Bullying can be a one time serious or happens over and over.

Within the school year, have you been bullied by other students?



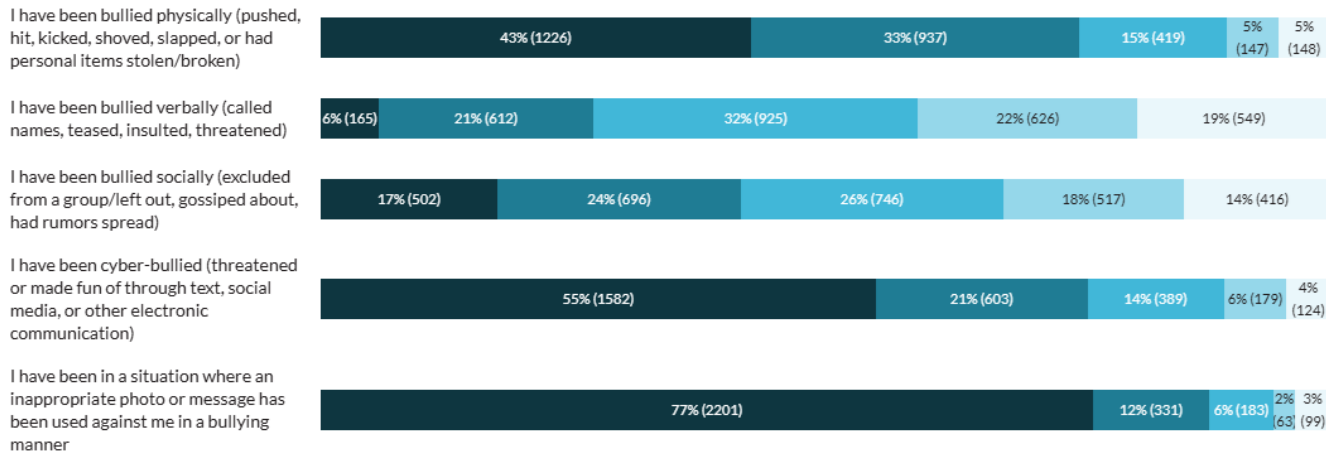
# School Climate and Bullying Survey

## Have you been bullied by other students?

Matrix (Likert scale text)

Q30-34 What type of bullying have you personally experienced this school year?

Your Physical & Emotional Safety



Favorability ⓘ

10%

41%

32%

11%

6%

Verbal

Social

● Never ● One or two times ● Three or four times ● Weekly ● Daily



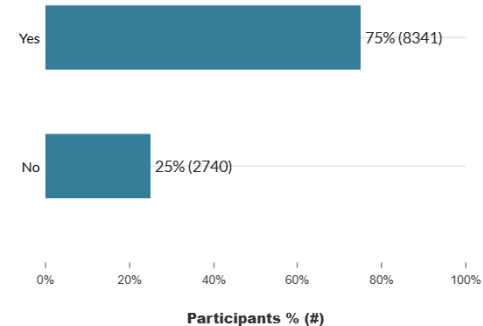
# School Climate and Bullying Survey

Aware of anonymous reporting? Know how to report bullying, harassment, and other safety concerns



Secondary - 75%

Did you know that Northwest ISD has an anonymous reporting system where you can report incidents of bullying, harassment, and other safety concerns?



Secondary - 66% (2024)

# Proposed After-School Counseling Clinic This Fall

- Evening counseling - T/Th
- NISD counselors and/or university interns
- Central location - NHS
- Short-term, Solution-focused



# DISTRICT LEADERSHIP



**Dr. Jamie Farber**

Director of Counseling



**Shana Jackson**

Coordinator of Counseling

Thank you!

