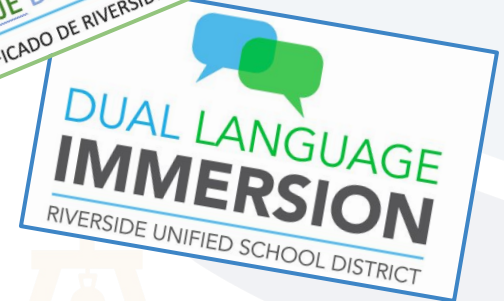


# DLI Fall 2025 Parent Information



THE TIME IS

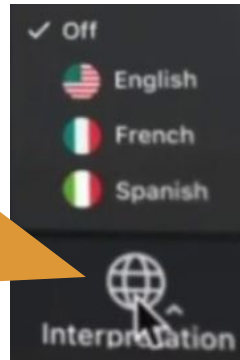
# Information



- ❑ Benefits of DLI
- ❑ Program Goals, Model and Design
- ❑ Amazing Opportunities
- ❑ DLI Pathways
- ❑ Language Allotment
- ❑ How to Apply
- ❑ Transfers
- ❑ Resource

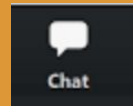
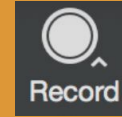
Bienvenidos,  
empezamos en breve.

Para español, haga clic en  
el icono de interpretación  
y seleccione “Spanish”



# Meeting Essentials

- This meeting will be recorded
- Please keep your mic on mute
- Unmute your mic when you need to speak
- Use the Chat box for questions or comments



**RUSD**

RIVERSIDE UNIFIED  
SCHOOL DISTRICT



A student who is **bilingual** can fluently speak two languages. A student who is **biliterate** can read and write proficiently in two languages.



# Benefits of Dual Language Immersion



**MAKING  
THE  
ASCENT**

Bilingualism and  
biliteracy  
provides lasting  
cognitive,  
academic,  
linguistic, and  
economic benefits.



Students with multi-cultural experiences will be more prepared to live and function in a global community.



Dominant Spanish speakers will have the opportunity to develop literacy in their **first language**, and maintain that first language while becoming fluent in English.

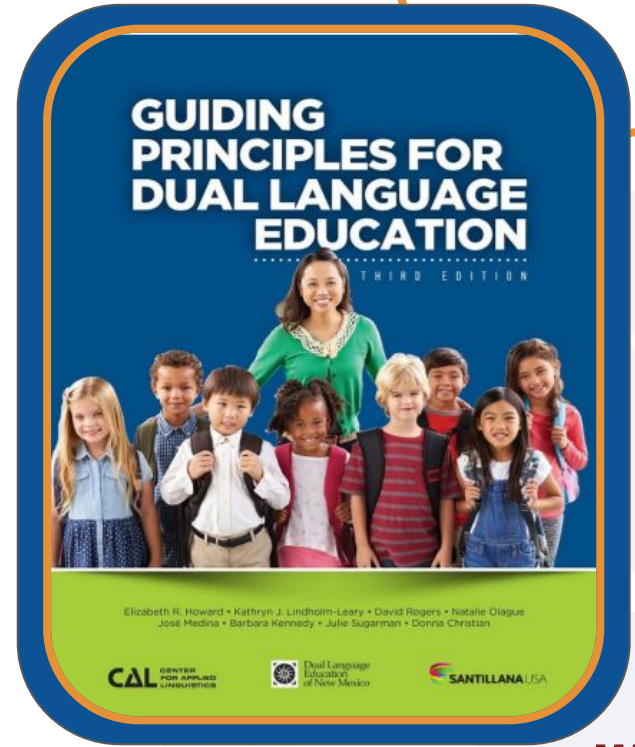


Dominant English speakers will have the opportunity to develop Spanish skills in speaking, listening, reading and writing.



# Guiding Principles of Dual Language Education,

## 3rd Edition



# Program Pillars

The three pillars of DLI are our anchors and students learn about all three in all grade levels.

## Pillar #1

Our program is designed to build **bilingualism** and **biliteracy** in English and in Spanish for all students.



## Pillar #2

We strive to provide **high levels** of standards-based **academic experience**.



## Pillar #3

Students develop **cross-cultural awareness**; therefore, they are able to work with others with a **global** mindset.



# DLI Essentials



# Model

90/10

Kindergarten students are **immersed** 90% of the day in the target language, **Spanish**.

# Design

50/50

Our program is designed to have an **equal** number of English speaking and Spanish speaking students in the classrooms.



# Program Design

ENGAGING.  
EXPANDING.  
EMPOWERING.

4 + 1

4 Language Domains

Listening    Reading  
Speaking    Writing

+ 1 more

+ Multilinguistic Awareness

Math, Science,  
History-Social  
Studies, etc.

**Language learning:**

Through **instruction** that is **standards-based**,  
rigorous, highly engaging, and collaborative.



Academic subjects are taught in both languages  
**NOT concurrently!!!**



Teachers in the primary grades:  
Fully **BILINGUAL & BILITERATE.**

# California State Seal of Biliteracy

Opportunity to earn the CA  
Seal of Biliteracy

Be bilingual & biliterate in  
two languages!



# Translation Course

- Opportunity to earn college credit in high school
- Graduate with a Translator Certificate
- NCAA Approved



# Our DLI Pathways



# Program Model

Grade	Spanish	English	Literacy Development
Kinder	90%	10%	Spanish
1 <sup>st</sup>	80%	20%	Spanish
2 <sup>nd</sup>	70%	30%	Spanish
3 <sup>rd</sup>	60%	40%	Introduction of formal English
4 <sup>th</sup> -6 <sup>th</sup>	50%	50%	English and Spanish



# Program Model

Grade	Spanish	English	Literacy Development
7 <sup>th</sup> Grade	<ul style="list-style-type: none"><li>• 7<sup>th</sup> Grade History</li><li>• Pre-AP Spanish</li></ul>	All other subjects	Spanish and English
8 <sup>th</sup> Grade	<ul style="list-style-type: none"><li>• 8<sup>th</sup> Grade Science</li><li>• AP Spanish*</li></ul>	All other subjects	Spanish and English
9 <sup>th</sup> -12 <sup>th</sup> Grades	<ul style="list-style-type: none"><li>• At least one subject in Spanish at each grade level</li></ul>	All other subjects	Spanish and English



# DLI Program in 2023-2024

School	Grades
Washington	Kinder – 6 <sup>th</sup> Grade
Castle View	Kinder – 6 <sup>th</sup> Grade
Mt. View	Kinder – 6 <sup>th</sup> Grade
Jefferson	Kinder – 6 <sup>th</sup> Grade
Longfellow	Kinder – 6 <sup>th</sup> Grade
Fremont	Kinder – 6 <sup>th</sup> Grade
Gage Middle School	Grade 7 <sup>th</sup> and 8 <sup>th</sup>
Sierra Middle School	Grade 7 <sup>th</sup> and 8 <sup>th</sup>
University Heights	Grade 7 <sup>th</sup>
Poly High School	Grades 9 <sup>th</sup> - 12 <sup>th</sup>
Ramona High School	Grade 9 <sup>th</sup> - 11 <sup>th</sup>



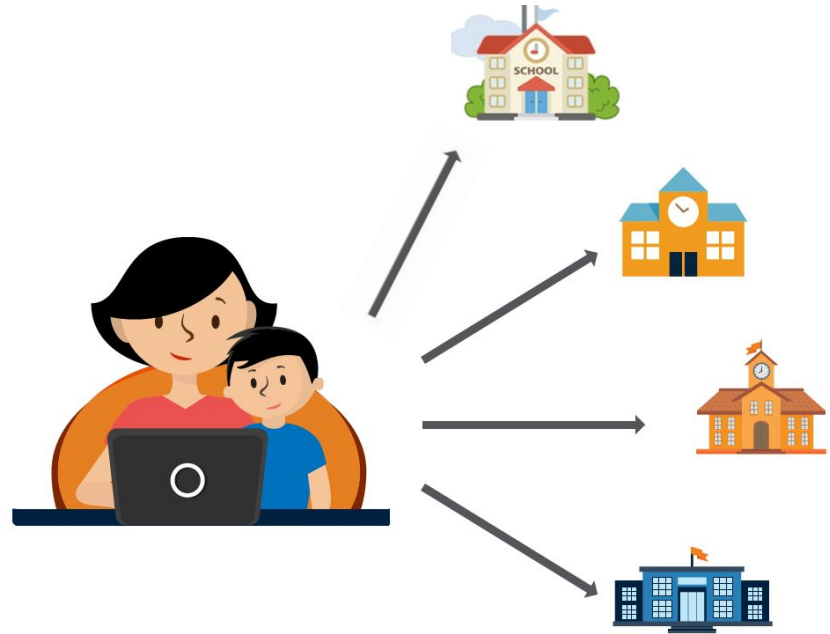
**Apply at**  
**[riversideunified.org/DLI](https://riversideunified.org/DLI)**



# When you apply:

Select all six  
elementary schools in your  
preference order

To have more  
opportunities to enter  
our program



# CAUTION: *Only request a school if:*

You are comfortable  
having your child in  
the K- 6, 7-8, 9-12  
DLI Pathway.

The school is a viable  
option for your  
family

You can provide  
transportation to  
the school you select  
without hardship





- If you have a child in DLI, you must apply for incoming siblings
- Siblings are not automatically accepted

# Priority List for Student Acceptance

**1<sup>st</sup> :** School of Residence students and within this category, School of Residence students with **siblings** already in the program will be placed first.

**2<sup>nd</sup> :** Non- school of residence students who have a sibling already in the program *at that site*

**3<sup>rd</sup> :** Parent works *at that specific DLI site*

Priorities 1 and 2 are voided if you do not apply for siblings in the Fall 2024

*4th : All other students*

*Lottery is implemented when we have more applicants than spaces available.*

Lottery results are posted at  
[riversideunified.org/DLI](https://riversideunified.org/DLI)

A large, 3D red graphic of the text "50%" is shown. It has a slight shadow and is positioned above a dark blue box containing text. A light blue geometric shape is visible in the background to the right.

Please keep in mind that we make a great effort to meet our 50/50 design.

# Transfers

DLI Transfers are  
**Specialty** Transfers  
unique to our DLI  
program



# Transfers

Both **in-district** and **out-of-district** parents may apply to the program.

**Out of district** parents must attain a transfer release from their district of residence



# Transfers

**District of Choice Transfer Application** are highly recommended for Out of District families. Transfer window will be available on the RUSD website from November 1, 2024 through January 10, 2025.

One and done transfer



If you are not accepted into the DLI program, and you want your child attending a particular school, complete the district transfer application no later than January 10, 2025

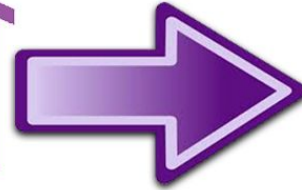
[Transfers Webpage](https://www.riversideunified.org/cms/One.aspx?portalId=580805&pageId=13495528)

<https://www.riversideunified.org/cms/One.aspx?portalId=580805&pageId=13495528>



# DLI School to DLI School Transfers

Transfers from  
one DLI school  
to another DLI  
school are not  
allowed



# DLI School to DLI School Transfers

- Double Transfers are not allowed
- Special family requests for transfer requests are reviewed and considered



# Ending a DLI Transfer



Specialty transfers are granted for DLI parents **based on enrollment in DLI**

If the parent decides to leave DLI, the **transfer is revoked**

Students **must return to their school of residence** when the Specialty Transfer is revoked

# Dual Language Immersion Application Dates

## Fall Application 2025 Window

Opens: November 1, 2024 at 12:00 pm

Closes: December 15, 2024 at 4:00 pm



A link to the online application will open November 1, 2024.



**RUSD**

RIVERSIDE UNIFIED  
SCHOOL DISTRICT

# Dual Language Immersion Application Dates

After Application Window

Opens: February 3, 2025 at 12:00 pm

Closes: September 26, 2025 at 4:00 pm



A link to the online application will open February 3, 2025.

# When will you be notified?

## Fall Application 2025 Notices

Notification about the DLI status will be sent to parents at the end of January 2025.



# DLI, a life-long rewarding program

- Kindergarten students are immersed in the target language - Spanish.
- It is **REWARDING** when your kindergarten child can speak Spanish & English by the end of the school year.



# Additional Information and Support

For information, please visit the Dual Language Immersion webpage at:  
<http://www.riversideunified.org/DLI>

Information on the website:

- Handy links to each of the DLI sites
- The DLI Handbook, a thorough guide to the DLI program
- Information on the Application Process
- **A link to the online application, to be posted Nov. 1**
- A Frequently Asked Questions document
- Research and other articles on Dual Language Immersion



**Apply at**  
**[riversideunified.org/DLI](https://riversideunified.org/DLI)**



# Questions



---

# Thank you

- Esther Garcia, Coordinator, DLI K-12  
[emgarcia@riversideunified.org](mailto:emgarcia@riversideunified.org)
- Samantha Flores, Administrative Secretary 1, DLI K-12  
[seflores@riversideunified.org](mailto:seflores@riversideunified.org)
- Patricia Thetford, TOSA, DLI K-12  
[pthetford@riversideunified.org](mailto:pthetford@riversideunified.org)

(951) 788-7135 x80739

