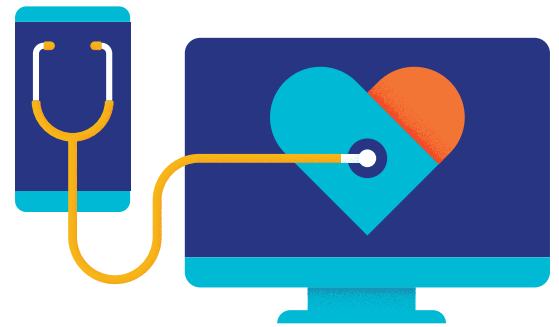


Searching for a doctor made easy

To find a doctor, hospital, lab and other providers in your network on myuhc.com, follow these steps:

- 1 Go to myuhc.com®. Select **Find a Provider**.
- 2 Select **Medical Directory** for the type of provider you are looking for.
- 3 Click on **Employer and Individual Plans** for the plan type.
- 4 If asked, select **Shopping Around** to view UnitedHealthcare® plan options.
- 5 Select **Choice Plus** as plan type.
- 6 Enter the **location** where you would like to find a provider. Click **Continue**. (Entering a home zip code may provide closest network providers.)
- 7 Search for providers and services by category, or find cost estimates.
- 8 To locate a primary care provider (PCP), click **People**, then, click **Primary Care** and type of primary care provider.
- 9 If you already know the doctor name, medical group or hospital you are looking for, select **All Primary Care Providers**. Then, in the open search field, enter text and click **Filter**.



Questions?

Please call the number on your health plan ID card



Experience may vary by individual plan type.

The choice of provider is yours. This site only serves as a general educational aid concerning provider listings and information about providers. The site is not a substitute for medical or health care advice and does not serve as a recommendation for a particular provider or type of medical or health care. If you believe you are experiencing a medical emergency, please call 911.

This directory's provider information is updated weekly and may have changed. Please check with your provider before scheduling an appointment or receiving services to confirm whether they are participating. If you think any information in this directory is inaccurate, please let us know by clicking on "Report Incorrect Information" on the specific provider's page, or calling the toll-free number on your health plan ID card.

All UnitedHealthcare members can access a cost estimate online or on the mobile app. None of the cost estimates are intended to be a guarantee of your costs or benefits. Your actual costs may vary. When accessing a cost estimate, please refer to the Website or Mobile application terms of use under Find Care & Costs section.

Insurance coverage provided by or through UnitedHealthcare Insurance Company, UnitedHealthcare Insurance Company of Illinois or their affiliates. Administrative services provided by United HealthCare Services, Inc. or their affiliates. Health Plan coverage provided by or through UnitedHealthcare of the Midlands, Inc., UnitedHealthcare of Illinois, Inc., UnitedHealthcare of the Midwest, Inc., UnitedHealthcare of Texas, Inc., UnitedHealthcare of Wisconsin, Inc. or a UnitedHealthcare company.