

# Completed Measure O Projects



# Sierra Middle School

## Measure O Campus Improvements

### Project Description

Sierra Middle School was built in 1957. Under Measure O, Sierra Middle School received HVAC replacement, light and fire alarm upgrades, ADA accessibility improvements, renovation of SDC classrooms, interior finishes, parking lot expansion, and beautification.

<b>Project Group:</b>	Group A
<b>Architect:</b>	TBP Architects
<b>DSA Status:</b>	Approved on February 19, 2018
<b>Construction:</b>	<b>Completed</b> – November 2019
<b>Project Budget:</b>	\$9,981,631

### Project Status

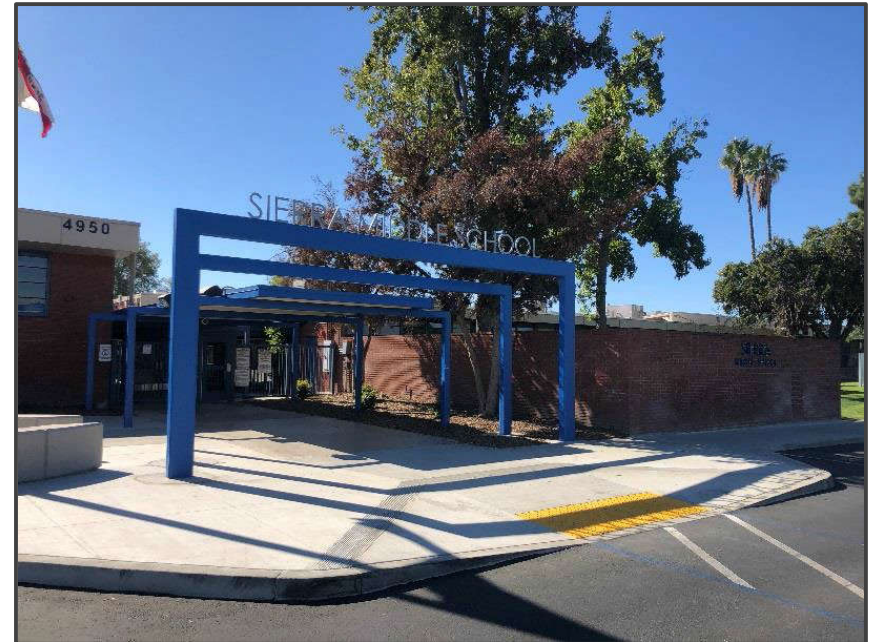
This project is 100% complete and is certified with the Division of the State Architect (DSA).

## Sierra Middle School

### Completed Project Pictures



Existing Gym with new HVAC



New school letters and architectural features to improve curb appeal

# Highgrove Elementary School

## Measure O Campus Improvements

### Project Description

Highgrove Elementary School was built in 1956. Under Measure O, Highgrove Elementary School received general site improvements, including grading, utilities, paving, new parking and drop-off, a new kinder two-story classroom building with 12 classrooms, and a new HVAC system, playground equipment, roof replacement, interior finishes, and accessibility upgrades.

<b>Project Group:</b>	Group A
<b>Architect:</b>	Ruhnau Clarke Architects
<b>DSA Status:</b>	Approved on February 6, 2019
<b>Construction:</b>	<b>Completed</b> – August 2020
<b>Project Budget:</b>	\$24,538,218

### Project Status

This project is 100% complete and is certified with the Division of the State Architect (DSA).

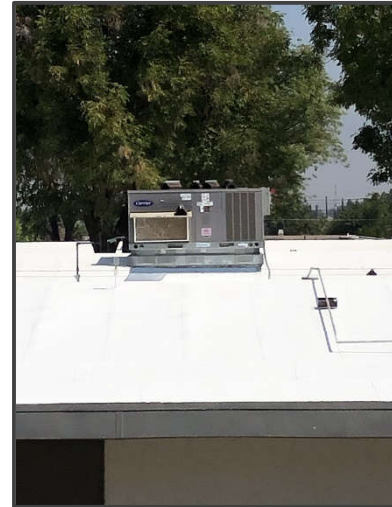


# Highgrove Elementary School

## Completed Project Pictures



New classroom & furniture



New HVAC Units



New grass and sidewalks

# Highgrove Elementary School

## Completed Project Pictures



New landscaping between existing buildings



New workrooms



New kinder play area

# Harrison Elementary School

## Measure O Campus Improvements

### Project Description

Harrison Elementary School was built in 1964. Under Measure O, Harrison Elementary School received a new parking and drop-off area, new classroom building with 5 classrooms, HVAC system, frontage to administration, and removal of portables.

<b>Project Group:</b>	Group A
<b>Architect:</b>	ATI Architects & Engineers
<b>DSA Status:</b>	Approved on March 7, 2019
<b>Construction:</b>	<b>Completed - April 2021</b>
<b>Project Budget:</b>	\$12,369,531

### Project Status

This project is 100% complete and is certified with the Division of the State Architect (DSA).

# Harrison Elementary School

## Completed Project Pictures



Completed Administration Building



New Classroom Building



# Jefferson Elementary School

## Measure O Campus Improvements

### Project Description

Jefferson Elementary School was built in 1948. Under Measure O, Jefferson Elementary School received a new 1-story 6 kinder classroom building and corresponding playground area, full modernization of Buildings M and N, including sinks, cabinetry, roofing, HVAC, windows, lighting, paint, drinking fountain replacement, upgrades to restroom facilities, and demolition of 5 classrooms.

<b>Project Group:</b>	Group A
<b>Architect:</b>	WLC Architects
<b>DSA Status:</b>	Approved on February 28, 2019
<b>Construction:</b>	<b>Completed</b> – April 2021
<b>Project Budget:</b>	\$18,407,115

### Project Status

This project is 100% complete and is certified with the Division of the State Architect (DSA).

# Jefferson Elementary School

## Completed Project Pictures



Administration Building Remodel



Multi-Purpose Room



New Kinder Wing

# Madison Elementary School

## Measure O Campus Improvements

### Project Description

Madison Elementary School was built in 1952. Under Measure O, Madison Elementary School received a 5 kinder classroom building, kinder play area, drop-off and parking lot, lunch shelter, curb appeal improvements, and removal of 5 portables.

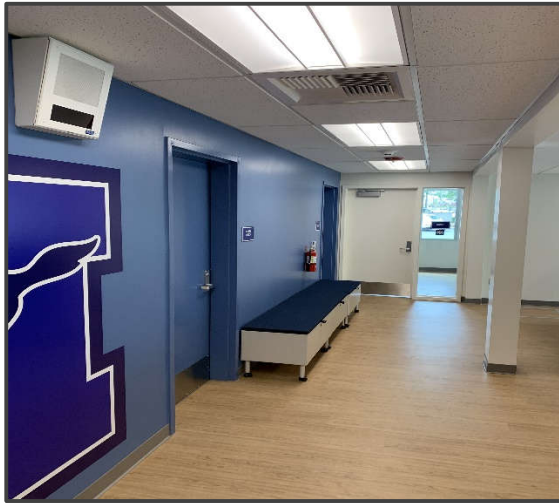
<b>Project Group:</b>	Group A
<b>Architect:</b>	LPA Architects
<b>DSA Status:</b>	Approved on March 29, 2019
<b>Construction:</b>	<b>Completed</b> – June 2021
<b>Project Budget:</b>	\$18,631,461

### Project Status

This project is 100% complete and is certified with the Division of the State Architect (DSA).

# Madison Elementary School

## Completed Project Pictures





# John Adams Elementary School

## Measure O Campus Improvements

### Project Description

John Adams Elementary School was built in 1962 on a 7.6 acre site. Under Measure O, the school received a new single-story five (5) Kindergarten classroom building, removal of five (5) existing portable classrooms, new kindergarten play area that includes new landscaping, shades trees, and playground equipment, new decomposed granite walking path area with new landscape and irrigation, new drop-off area and parking lot off of John Adams Street that includes twenty-two (22) standard parking spaces and two (2) ADA parking spaces, and related site work.

<b>Project Group:</b>	Group C
<b>Architect:</b>	LPA Architects
<b>DSA Status:</b>	Approved on July 9, 2019
<b>Construction:</b>	<b>Completed</b> – November 2021
<b>Project Budget:</b>	\$13,995,922

### Project Status

This project is 100% complete and is certified with the Division of the State Architect (DSA).

# John Adams Elementary School

## Completed Project Pictures



# John Adams Elementary School

## Completed Project Pictures



# Sunshine Early Childhood Center

## Measure O Campus Improvements

### Project Description

Sunshine Early Childhood Center was built in 1947. The site program houses the California Children Services (CCS), a county program that services students with special needs. Under Measure O, the site received a new portable building to relocate the CCS Program which relieved 3,000+ square feet for students of Sunshine. The site also received a new play structure, a light modernization, and a front campus facelift.

<b>Project Group:</b>	Group B
<b>Architect:</b>	GO Architects
<b>DSA Status:</b>	Approved on February 19, 2019
<b>Construction:</b>	<b>Completed</b> - December 13, 2021
<b>Project Budget:</b>	\$10,800,000

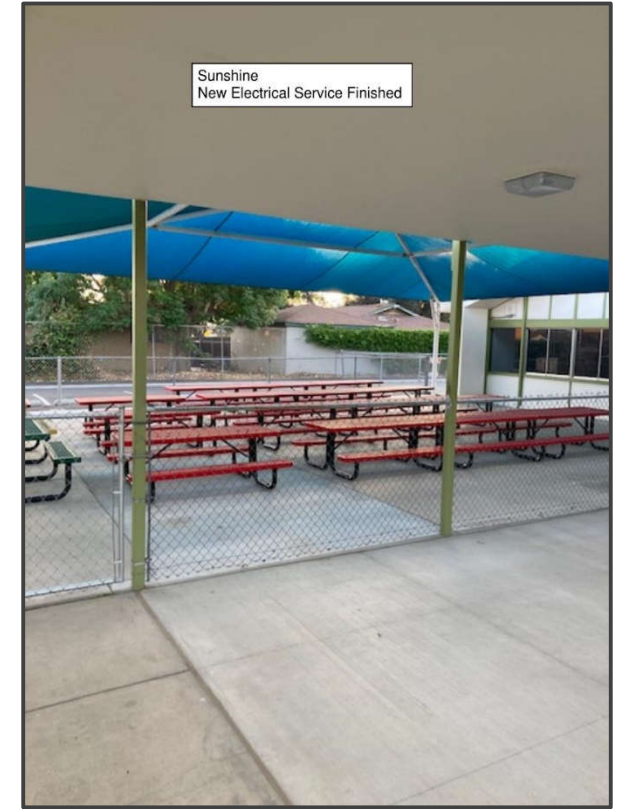
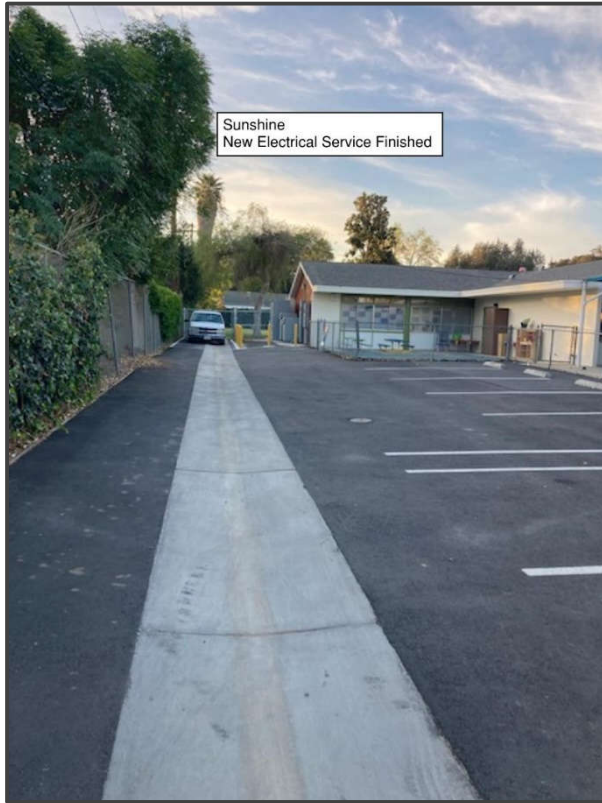
### Project Status

- ✓ Completed and occupied



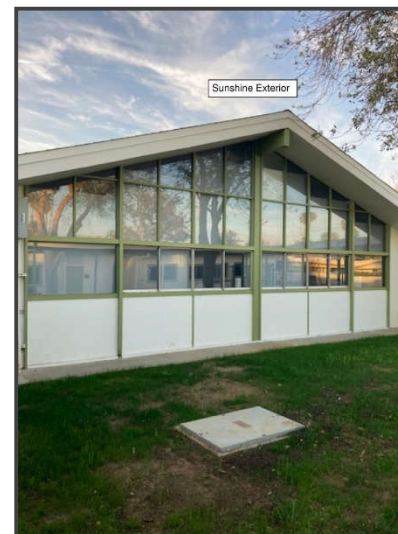
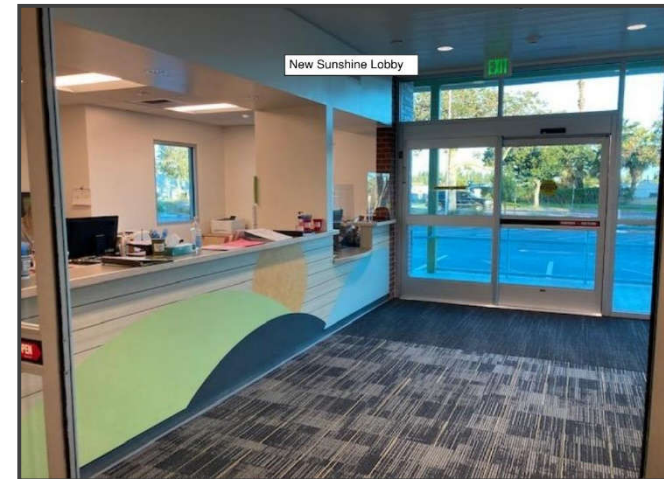
# Sunshine Early Childhood Center

## Completed Project Pictures



# Sunshine Early Childhood Center

## Completed Project Pictures



# Magnolia Elementary School

## Measure O Campus Improvements

### Project Description

Magnolia Elementary School is one of the oldest schools in the District, built in 1898. Under Measure O, the school will receive construction of two (2) new single-story classroom buildings with ten (10) standard classrooms, student restrooms, and a staff restroom, removal of ten (10) existing portable classrooms from the site at the end of the project, new kindergarten play area, new drop-off area off of Maplewood Place, new flooring in cafeteria, and related site work.

<b>Project Group:</b>	Group C
<b>Architect:</b>	ATI Architects
<b>DSA Status:</b>	Approved on April 11, 2019
<b>Construction:</b>	<b>Completed</b> – November 2021
<b>Project Budget:</b>	\$12,616,082

### Project Status

- ✓ Completed and occupied



# Magnolia Elementary School

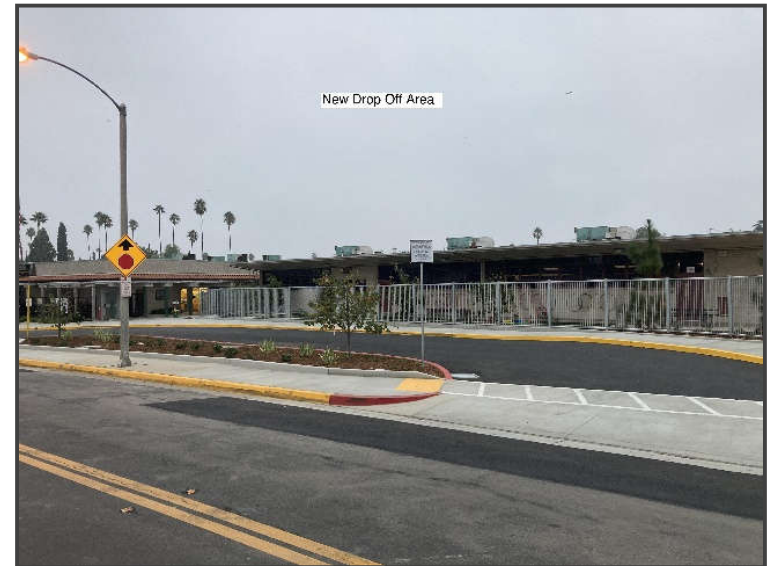
## Completed Project Pictures





# Magnolia Elementary School

## Completed Project Pictures



# Andrew Jackson Elementary School

## Measure O Campus Improvements

### Project Description

Andrew Jackson Elementary School was built in 1959. Under Measure O, project scope includes construction of a new two-story classroom building with eight (8) standard classrooms, staff and student restrooms, and custodial areas, removal of eight (8) existing portables, new fencing, new parking lot and drop off areas, thirty-five (35) standard stalls and two (2) HC stalls, renovation of six (6) existing kindergarten classrooms, new kindergarten play area that includes new landscaping, shade trees, and new playground equipment, renovation of existing classroom buildings and library, and site work including the removal and replacement of existing damaged sewer lines, new underground infrastructure for the new building, ADA upgrades, and relocation of Head Start portable classroom, new interior restroom and finishes, new play equipment, landscaping & hard-scape.

<b>Project Group:</b>	Group B
<b>Architect:</b>	WLC Architects
<b>DSA Status:</b>	Approved on August 28, 2019
<b>Construction:</b>	<b>Completed</b> - March 2022
<b>Project Budget:</b>	\$22,117,380

### Project Status

- ✓ The new sod was turned over to RUSD Maintenance Department.

# Andrew Jackson Elementary School

## Completed Project Pictures



# Riverside Polytechnic High School

## Measure O Campus Improvements

### Project Description

Riverside Polytechnic High School was built in 1965. Under Measure O, project includes ADA upgrades to the main campus, and phase II includes the addition of a new auxiliary gym.

<b>Project Group:</b>	Group B
<b>Architect:</b>	WLC Architects
<b>DSA Submittal:</b>	Approved on March 30, 2019
<b>Phase I Construction:</b>	<b>Completed</b> - September 2021
<b>Phase II Gym Construction:</b>	<b>Completed</b> – May 2022
<b>Project Budget:</b>	\$24,039,894

### Project Status

- ✓ Minimal punch list items to complete.
- ✓ Finished site training for roof access ladder.

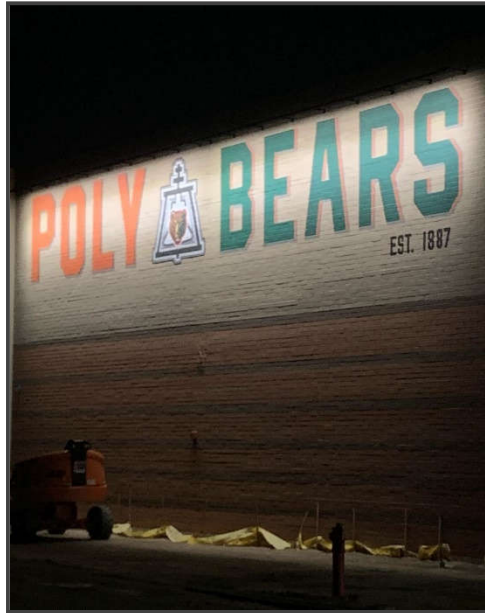


# Riverside Polytechnic High School

## Completed Project Pictures



Corridor



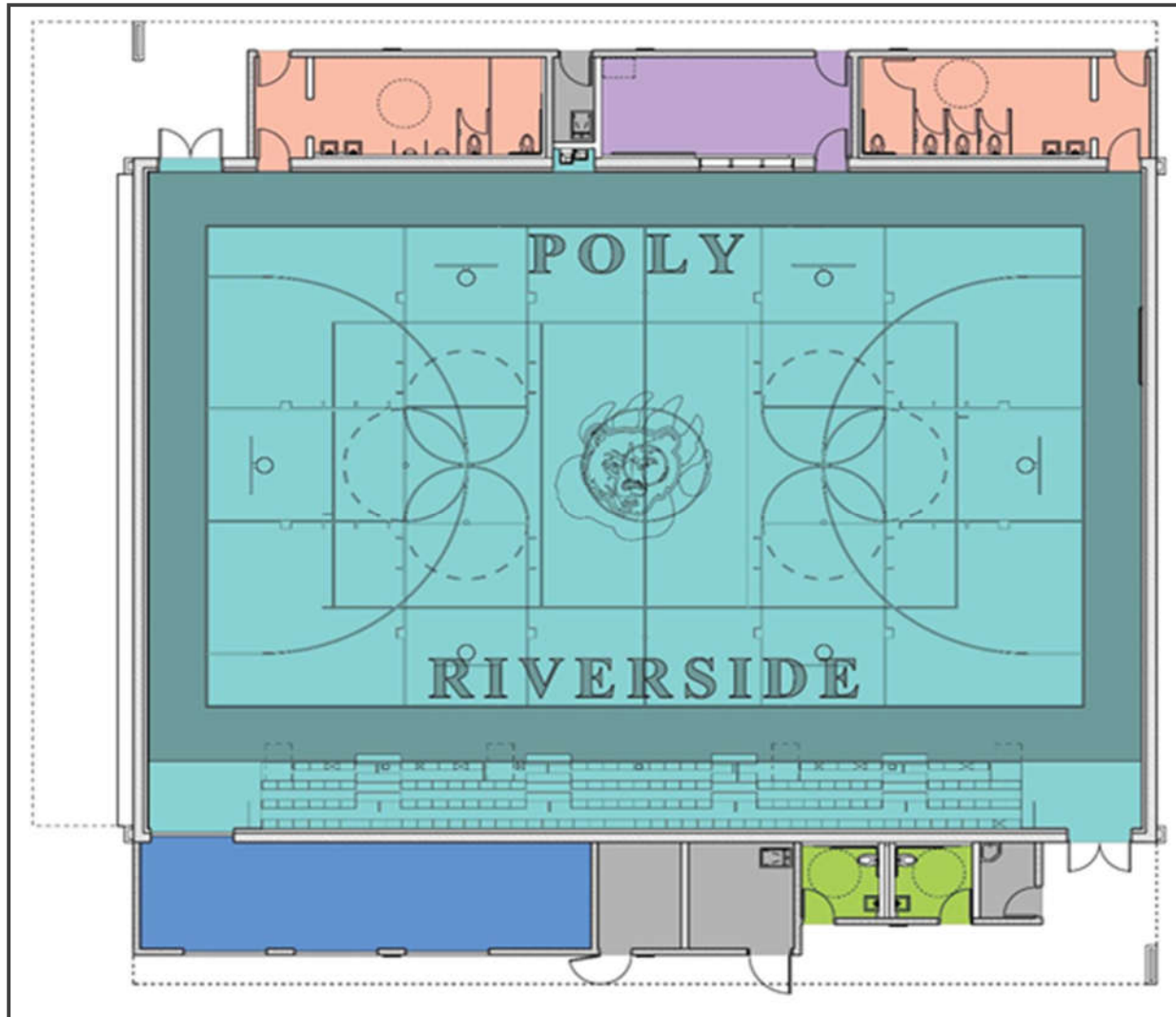
Exterior New Gym



Interior Gym

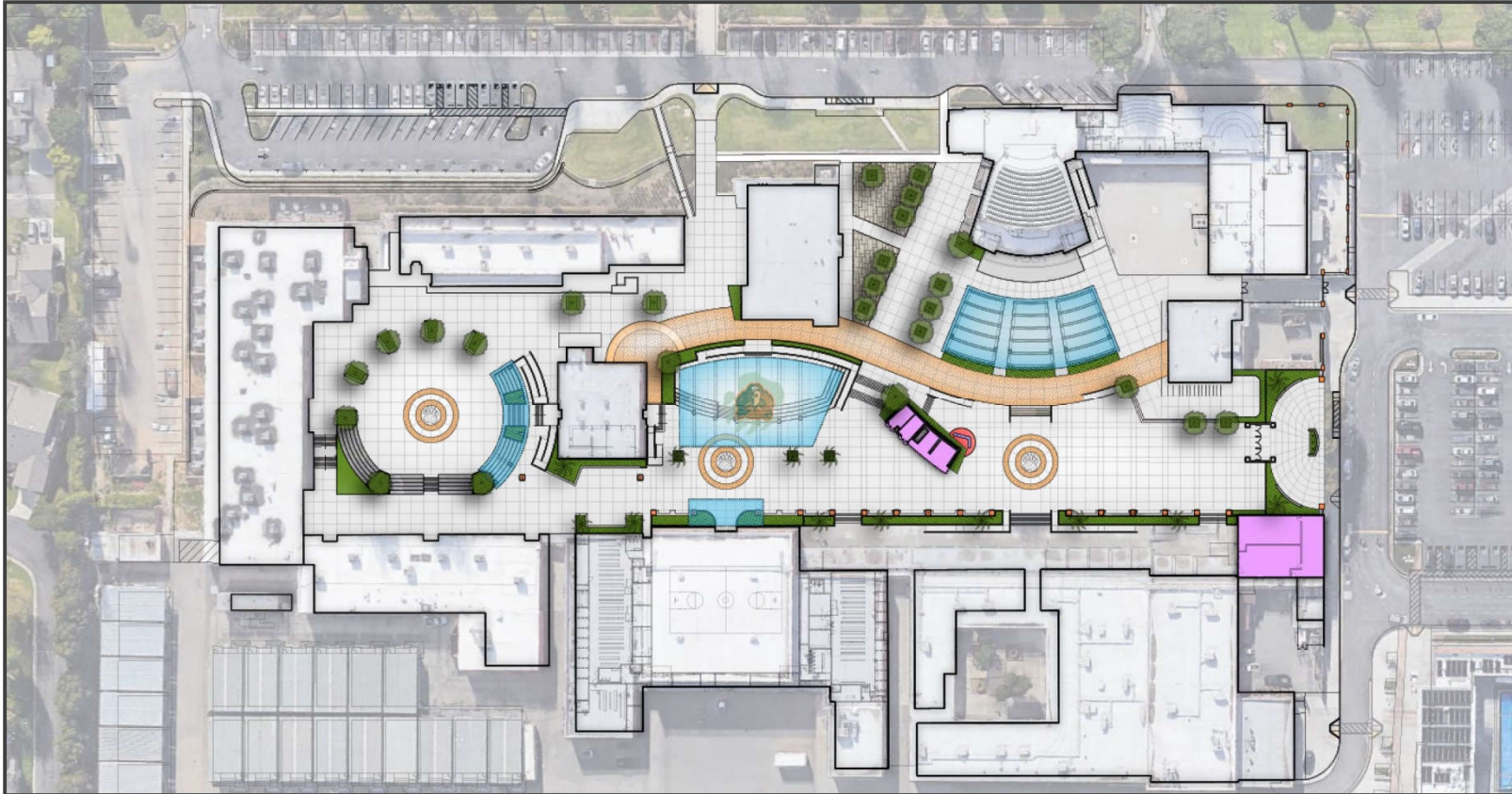
# Riverside Polytechnic High School

## Riverside Polytechnic Gym Rendering



# Riverside Polytechnic High School

## New Site Plan





# Arlington High School

## Measure O Campus Improvements

### Project Description

Arlington High School was built in 1973. Under Measure O, the project includes three (3) science and three (3) special education with life skills learning area, upgrades to media arts building, courtyard and site enhancements, moderate modernization, renovation of existing pool, new auxiliary gym, and stadium expansion.

<b>Project Group:</b>	Group C
<b>Architect:</b>	Ruhnau Clarke Architects
<b>DSA Status:</b>	Approved
<b>Construction:</b>	<b>Completed</b> – May 2022
<b>Project Budget:</b>	\$26,607,776

### Project Status

- ✓ Punch and warranty items ongoing.
- ✓ Tip and roll bleachers were installed at the Auxiliary Gym.



# Arlington High School

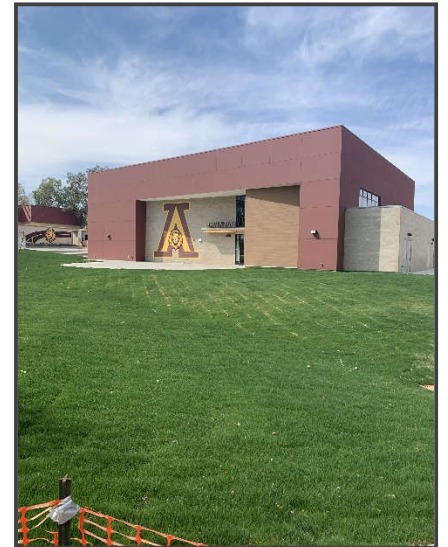
## Completed Project Pictures



New Ticket Booth



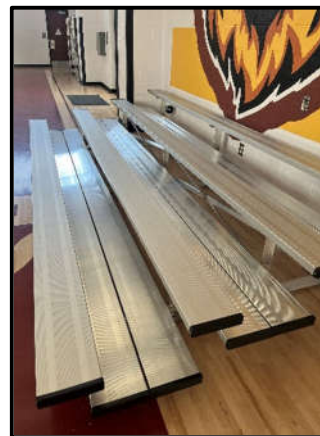
New Bio-Med Building



Exterior Auxiliary Gym



Interior Auxiliary Gym

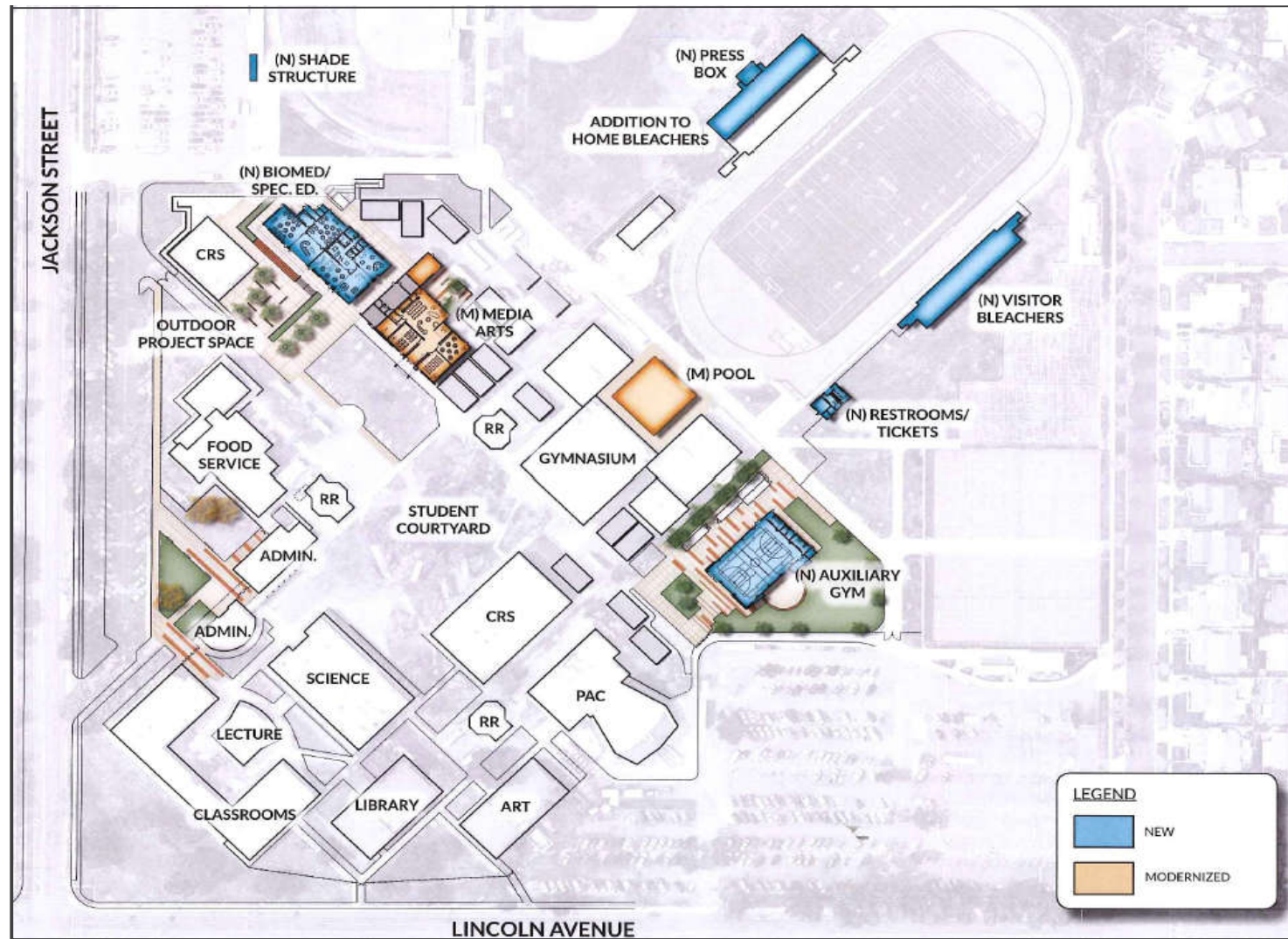


Tip & Roll Bleachers



# Arlington High School

## New Site Plan



# Louisa May Alcott Elementary School

## Measure O Campus Improvements

### Project Description

Louisa May Alcott Elementary School was built in 1961. Under Measure O, the project includes new interior and exterior painting, new ceiling tile and t-bar, new lighting, new HVAC, casework, and carpet, and restroom ADA upgrades, removal of eleven (11) classroom portables, grading, new hard court play yard area, turf, ADA Upgrades, new landscape and irrigation throughout the campus, new gate, new fencing, and new domestic water, sewer, storm drain, and gas line for new building; and a new classroom building with six (6) general education classrooms and four (4) kindergarten classrooms with restrooms and new kinder playground, play equipment and fencing.

<b>Project Group:</b>	Group B
<b>Architect:</b>	DLR Architects
<b>Construction:</b>	May 2021 to August 2022
<b>Project Budget:</b>	\$23,073,713
<b>Percentage Complete:</b>	99%

### Project Status

- ✓ Main project is under process
- ✓ Ongoing punch list repair items
- ✓ Interim Housing DSA A04-118885 is closed with Certification of Compliance



# Louisa May Alcott Elementary School

## Construction Pictures



Front of School



New Landscaping Behind New Building K

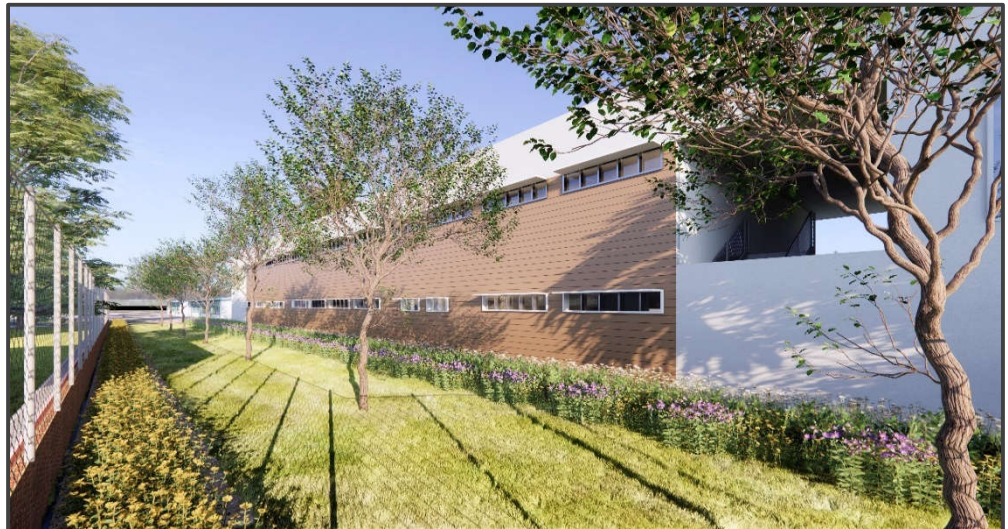


New 2-Story Classroom Building



# Louisa May Alcott Elementary School

## Exterior Rendering



# Louisa May Alcott Elementary School

## New Site Plan

