

Completed Measure O Projects



Sierra Middle School

Measure O Campus Improvements

Project Description

Sierra Middle School was built in 1957. Under Measure O, Sierra Middle School received HVAC replacement, light and fire alarm upgrades, ADA accessibility improvements, renovation of SDC classrooms, interior finishes, parking lot expansion, and beautification.

Project Group:	Group A
Architect:	TBP Architects
DSA Status:	Approved on February 19, 2018
Construction:	Completed – November 2019
Construction Status:	Completed
Project Budget:	\$9,981,631

Project Status

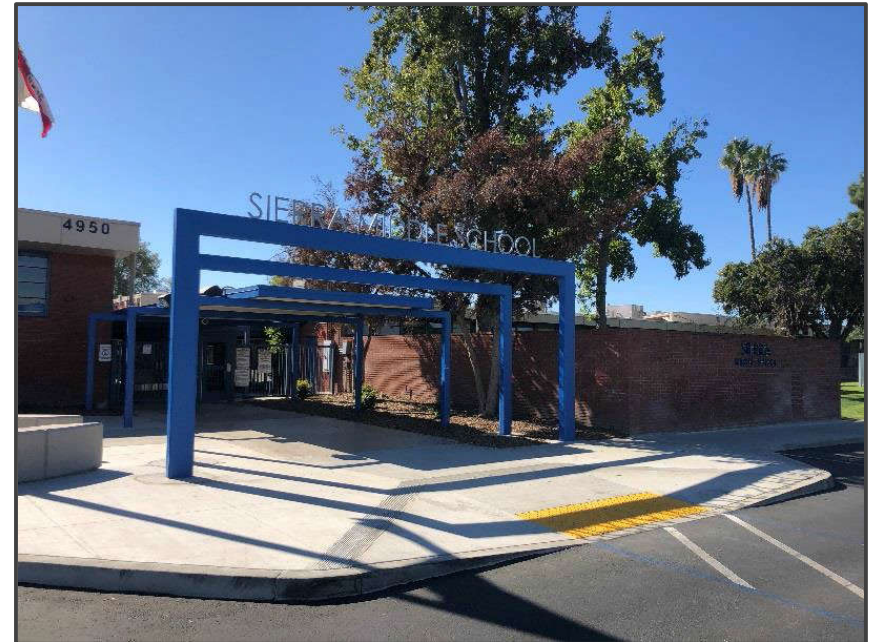
This project is 100% complete and is certified with the Division of the State Architect (DSA).

Sierra Middle School

Completed Project Pictures



Existing Gym with new HVAC



New school letters and architectural features to improve curb appeal

Highgrove Elementary School

Measure O Campus Improvements

Project Description

Highgrove Elementary School was built in 1956. Under Measure O, Highgrove Elementary School received general site improvements, including grading, utilities, paving, new parking and drop-off, a new kinder two-story classroom building with 12 classrooms, and a new HVAC system, playground equipment, roof replacement, interior finishes, and accessibility upgrades.

Project Group:	Group A
Architect:	Ruhnau Clarke Architects
DSA Status:	Approved on February 6, 2019
Construction:	Completed – August 2020
Project Budget:	\$24,538,218

Project Status

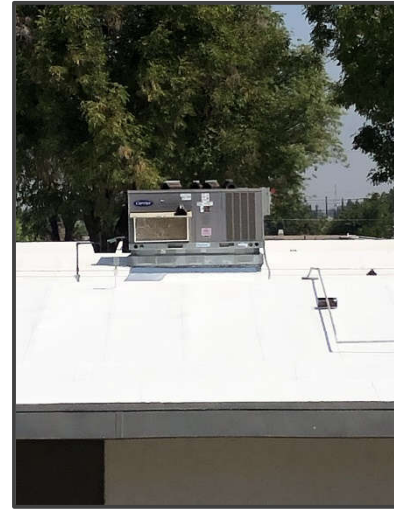
This project is 100% complete and is certified with the Division of the State Architect (DSA).

Highgrove Elementary School

Completed Project Pictures



New classroom & furniture



New HVAC Units



New grass and sidewalks

Highgrove Elementary School

Completed Project Pictures



New landscaping between existing buildings



New workrooms



New kinder play area

Harrison Elementary School

Measure O Campus Improvements

Project Description

Harrison Elementary School was built in 1964. Under Measure O, Harrison Elementary School received a new parking and drop-off area, new classroom building with 5 classrooms, HVAC system, frontage to administration, and removal of portables.

Project Group:	Group A
Architect:	ATI Architects & Engineers
DSA Status:	Approved on March 7, 2019
Construction:	Completed - April 2021
Project Budget:	\$12,369,531

Project Status

This project is 100% complete and is certified with the Division of the State Architect (DSA).

Harrison Elementary School

Completed Project Pictures



Completed Administration Building



New Classroom Building

Jefferson Elementary School

Measure O Campus Improvements

Project Description

Jefferson Elementary School was built in 1948. Under Measure O, Jefferson Elementary School received a new 1-story 6 kinder classroom building and corresponding playground area, full modernization of Buildings M and N, including sinks, cabinetry, roofing, HVAC, windows, lighting, paint, drinking fountain replacement, upgrades to restroom facilities, and demolition of 5 classrooms.

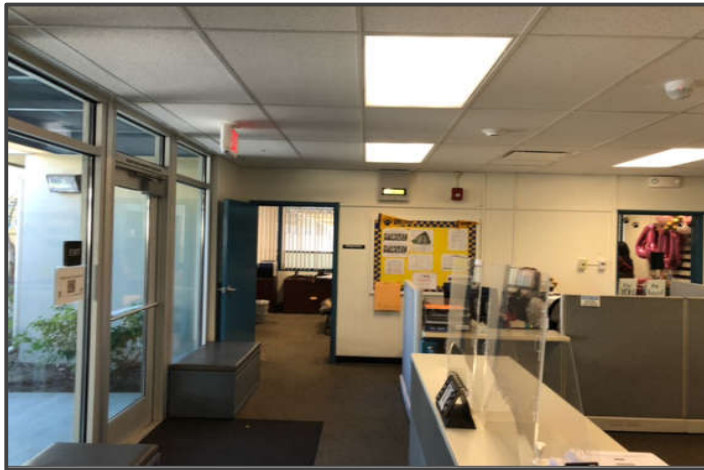
Project Group:	Group A
Architect:	WLC Architects
DSA Status:	Approved on February 28, 2019
Construction:	Completed – April 2021
Project Budget:	\$18,407,115

Project Status

This project is 100% complete and is certified with the Division of the State Architect (DSA).

Jefferson Elementary School

Completed Project Pictures



Administration Building Remodel



Multi-Purpose Room



New Kinder Wing

Madison Elementary School

Measure O Campus Improvements

Project Description

Madison Elementary School was built in 1952. Under Measure O, Madison Elementary School received a 5 kinder classroom building, kinder play area, drop-off and parking lot, lunch shelter, curb appeal improvements, and removal of 5 portables.

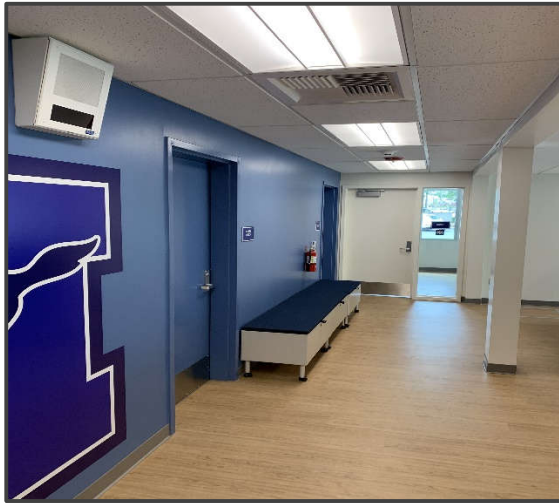
Project Group:	Group A
Architect:	LPA Architects
DSA Status:	Approved on March 29, 2019
Construction:	Completed – June 2021
Project Budget:	\$18,631,461

Project Status

This project is 100% complete and is certified with the Division of the State Architect (DSA).

Madison Elementary School

Completed Project Pictures



John Adams Elementary School

Measure O Campus Improvements

Project Description

John Adams Elementary School was built in 1962 on a 7.6 acre site. Under Measure O, the school received a new single-story five (5) Kindergarten classroom building, removal of five (5) existing portable classrooms, new kindergarten play area that includes new landscaping, shades trees, and playground equipment, new decomposed granite walking path area with new landscape and irrigation, new drop-off area and parking lot off of John Adams Street that includes twenty-two (22) standard parking spaces and two (2) ADA parking spaces, and related site work.

Project Group:	Group C
Architect:	LPA Architects
DSA Status:	Approved on July 9, 2019
Construction:	Completed – November 2021
Project Budget:	\$13,995,922

Project Status

This project is 100% complete and is certified with the Division of the State Architect (DSA).

John Adams Elementary School

Completed Project Pictures



John Adams Elementary School

Completed Project Pictures



Sunshine Early Childhood Center

Measure O Campus Improvements

Project Description

Sunshine Early Childhood Center was built in 1947. The site program houses the California Children Services (CCS), a county program that services students with special needs. Under Measure O, the site received a new portable building to relocate the CCS Program which relieved 3,000+ square feet for students of Sunshine. The site also received a new play structure, a light modernization, and a front campus facelift.

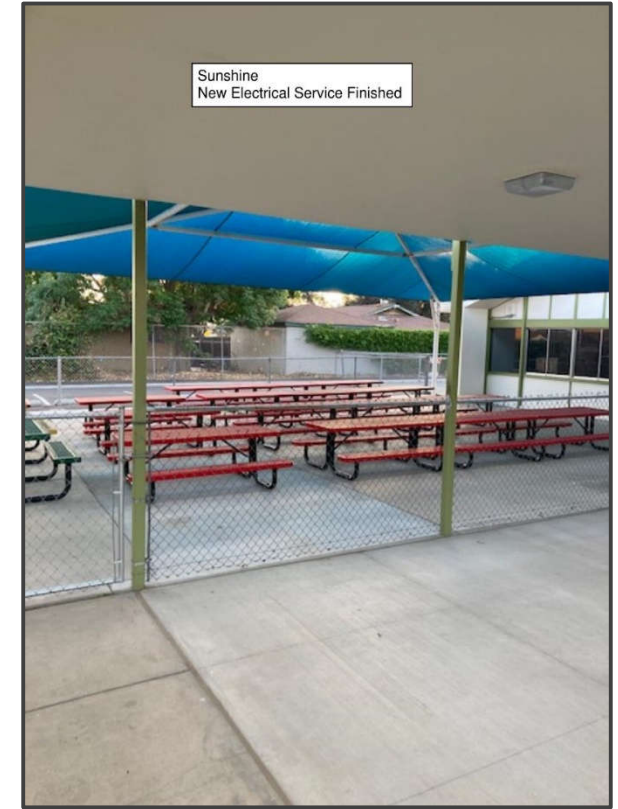
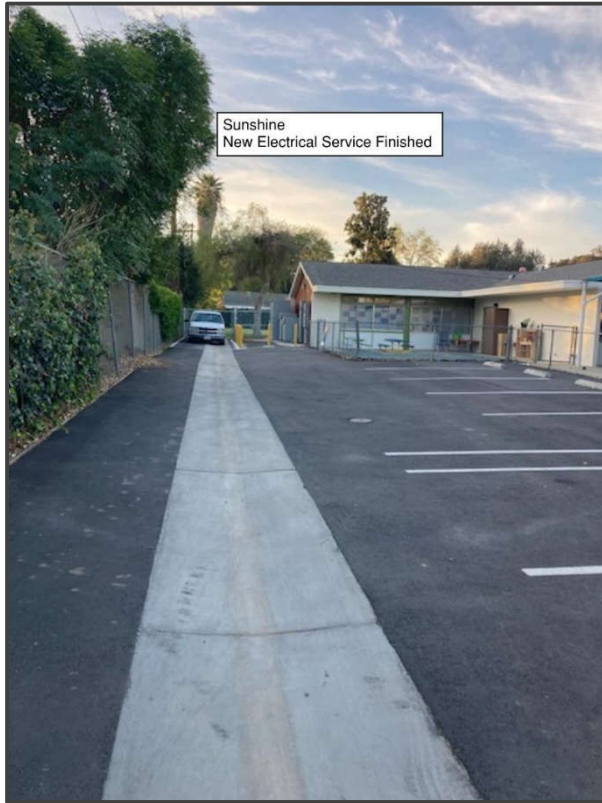
Project Group:	Group B
Architect:	GO Architects
DSA Status:	Approved on February 19, 2019
Construction:	Completed - December 13, 2021
Project Budget:	\$10,800,000

Project Status

- ✓ Completed and occupied

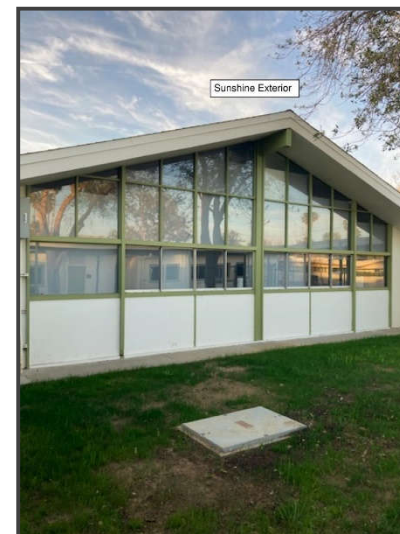
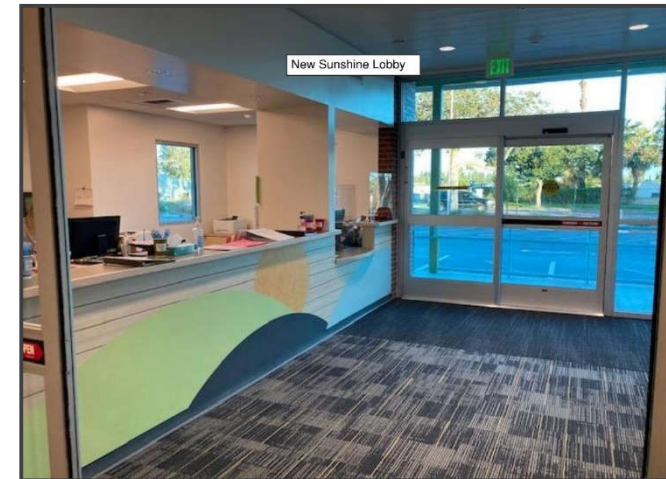
Sunshine Early Childhood Center

Completed Project Pictures



Sunshine Early Childhood Center

Completed Project Pictures



Magnolia Elementary School

Measure O Campus Improvements

Project Description

Magnolia Elementary School is one of the oldest schools in the District, built in 1898. Under Measure O, the school will receive construction of two (2) new single-story classroom buildings with ten (10) standard classrooms, student restrooms, and a staff restroom, removal of ten (10) existing portable classrooms from the site at the end of the project, new kindergarten play area, new drop-off area off of Maplewood Place, new flooring in cafeteria, and related site work.

Project Group:	Group C
Architect:	ATI Architects
DSA Status:	Approved on April 11, 2019
Construction:	Completed – November 2021
Project Budget:	\$12,616,082

Project Status

- ✓ Completed and occupied

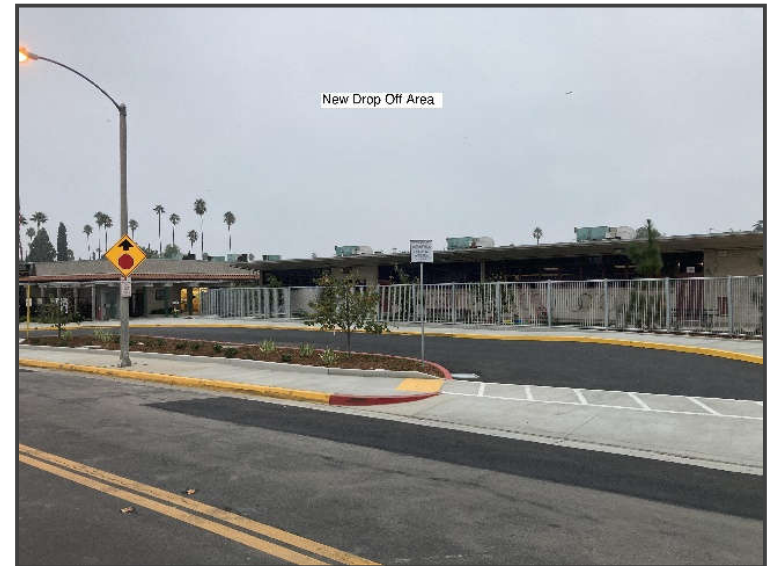
Magnolia Elementary School

Completed Project Pictures



Magnolia Elementary School

Completed Project Pictures



Andrew Jackson Elementary School

Measure O Campus Improvements

Project Description

Andrew Jackson Elementary School was built in 1959. Under Measure O, project scope includes construction of a new two-story classroom building with eight (8) standard classrooms, staff and student restrooms, and custodial areas, removal of eight (8) existing portables, new fencing, new parking lot and drop off areas, thirty-five (35) standard stalls and two (2) HC stalls, renovation of six (6) existing kindergarten classrooms, new kindergarten play area that includes new landscaping, shade trees, and new playground equipment, renovation of existing classroom buildings and library, and site work including the removal and replacement of existing damaged sewer lines, new underground infrastructure for the new building, ADA upgrades, and relocation of Head Start portable classroom, new interior restroom and finishes, new play equipment, landscaping & hard-scape.

Project Group:	Group B
Architect:	WLC Architects
DSA Status:	Approved on August 28, 2019
Construction:	Completed - March 2022
Project Budget:	\$22,117,380

Project Status

This project is 100% complete and is certified with the Division of the State Architect (DSA).

Andrew Jackson Elementary School

Completed Project Pictures



Riverside Polytechnic High School

Measure O Campus Improvements

Project Description

Riverside Polytechnic High School was built in 1965. Under Measure O, project includes ADA upgrades to the main campus, and phase II includes the addition of a new auxiliary gym.

Project Group:	Group B
Architect:	WLC Architects
DSA Submittal:	Approved on March 30, 2019
Phase I Construction:	Completed - September 2021
Phase II Gym Construction:	Completed – May 2022
Project Budget:	\$24,039,894

Project Status

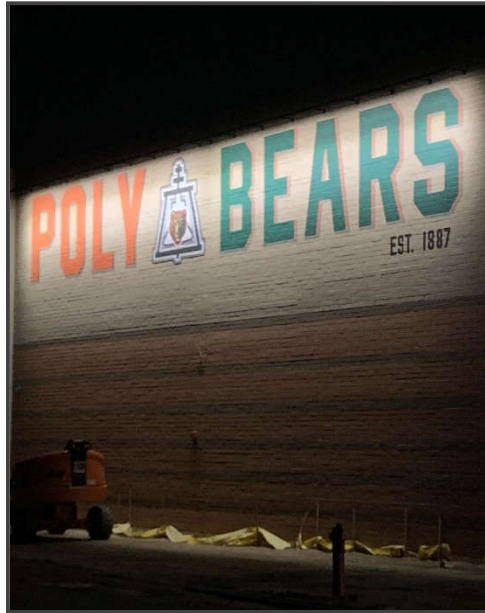
- ✓ The building has been complete and turned over for use.
- ✓ Pending a few electronic items to close out construction.

Riverside Polytechnic High School

Completed Project Pictures



Corridor



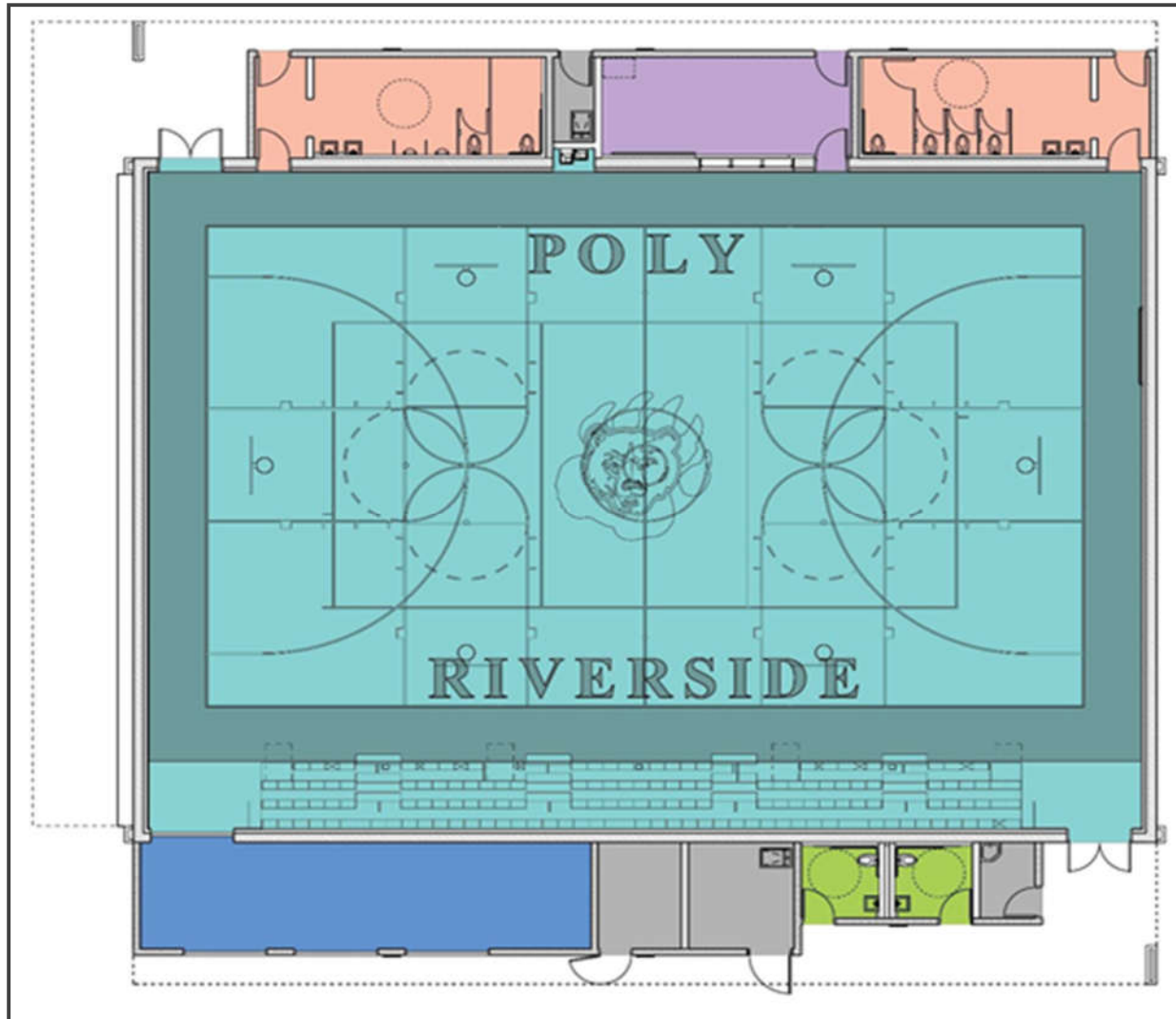
Exterior New Gym



Interior Gym

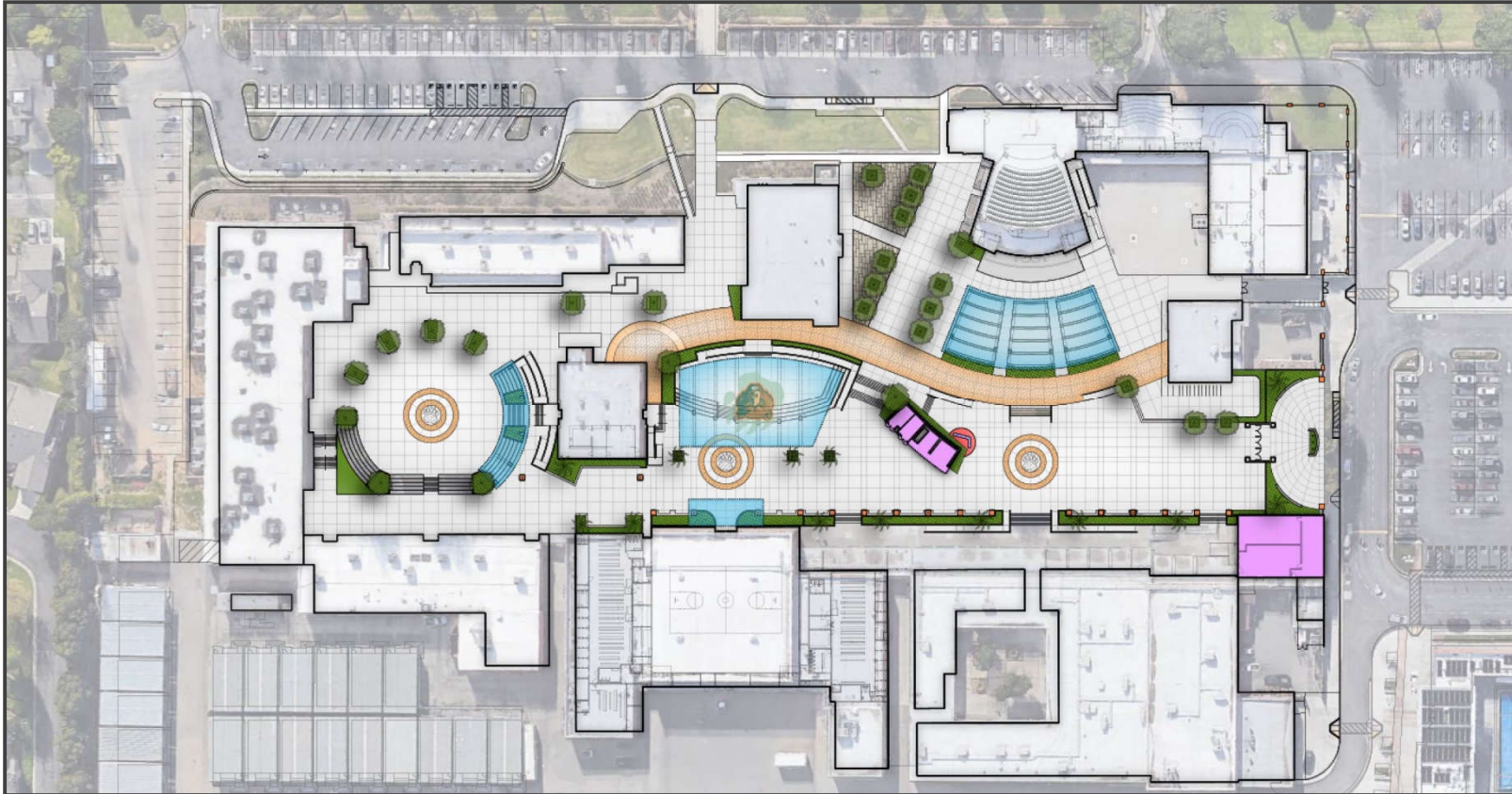
Riverside Polytechnic High School

Riverside Polytechnic Gym Rendering



Riverside Polytechnic High School

New Site Plan



Arlington High School

Measure O Campus Improvements

Project Description

Arlington High School was built in 1973. Under Measure O, the project includes three (3) science and three (3) special education with life skills learning area, upgrades to media arts building, courtyard and site enhancements, moderate modernization, renovation of existing pool, new auxiliary gym, and stadium expansion.

Project Group:	Group C
Architect:	Ruhnau Clarke Architects
DSA Status:	Approved
Construction:	Completed – May 2022
Project Budget:	\$26,607,776

Project Status

- ✓ Project has been turned over for site use.
- ✓ Punch list items currently being working on.
- ✓ Warranty period has started.

Arlington High School

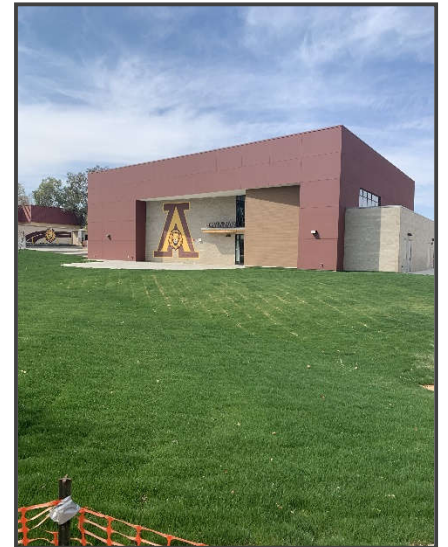
Completed Project Pictures



New Ticket Booth



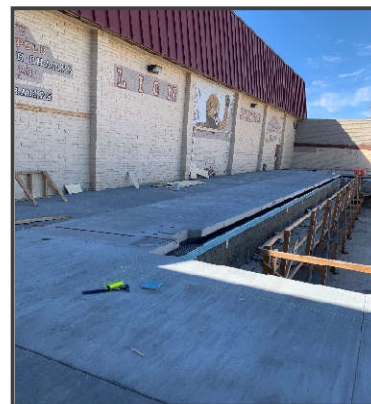
New Bio-Med Building



Exterior Auxiliary Gym



Interior Auxiliary Gym



Pool Deck Upgrades

Arlington High School

New Site Plan

