

# Completed Measure O Projects



# Sierra Middle School

## Measure O Campus Improvements

### Project Description

Sierra Middle School was built in 1957. Under Measure O, Sierra Middle School will receive HVAC replacement, light and fire alarm upgrades, ADA accessibility improvements, renovation of SDC classrooms, interior finishes, parking lot expansion, and beautification.

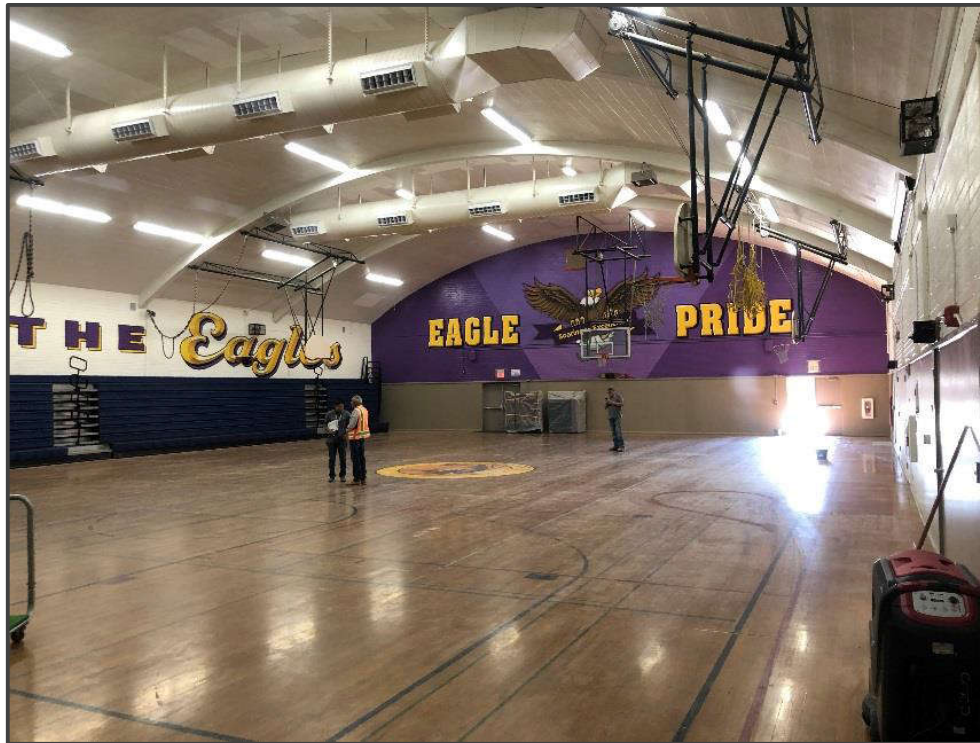
<b>Project Group:</b>	Group A
<b>Architect:</b>	TBP Architects
<b>DSA Status:</b>	<b>Approved</b> on February 19, 2018
<b>Construction:</b>	<b>Completed</b> – November 2019
Construction Status:	Completed
<b>Project Budget:</b>	\$9,981,631

### Project Status

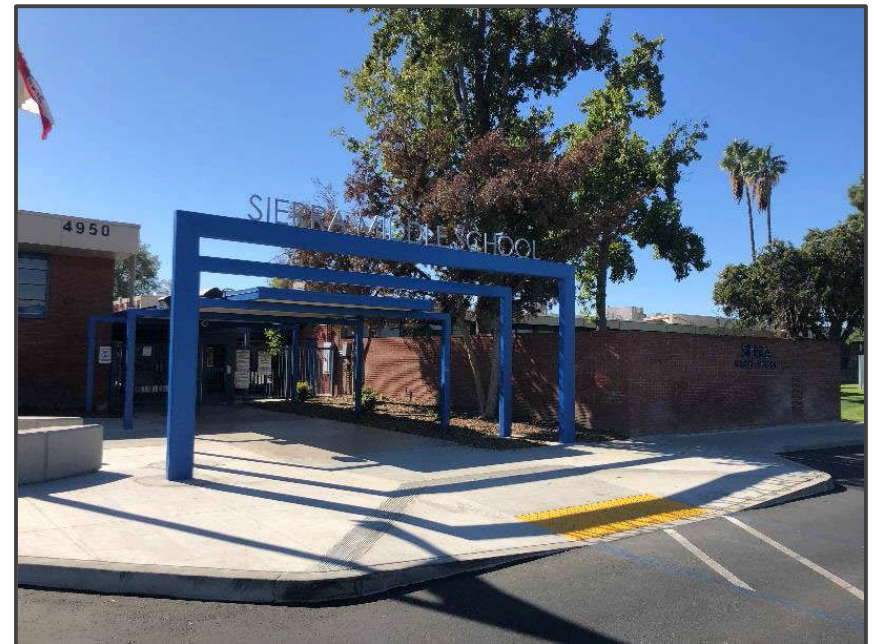
This project is 100% complete and has been closed out with the Division of State Architect (DSA).

## Sierra Middle School

### Completed Project Pictures



HVAC start up on Gymnasium roof



Front fence and handrails





# Highgrove Elementary School

## Measure O Campus Improvements

### Project Description

Highgrove Elementary School was built in 1956. The site currently has 26 portable classroom buildings. Under Measure O, Highgrove Elementary School received general site improvements, including grading, utilities, paving, new parking and drop-off, a new kinder two-story classroom building with 12 classrooms, and a new HVAC system, playground equipment, roof replacement, interior finishes, and accessibility upgrades.

**Project Group:** Group A  
**Architect:** Ruhnau Clarke Architects  
**DSA Status:** **Approved** on February 6, 2019  
**Construction:** **Completed** – August 2020  
**Project Budget:** \$24,538,218

### Project Status

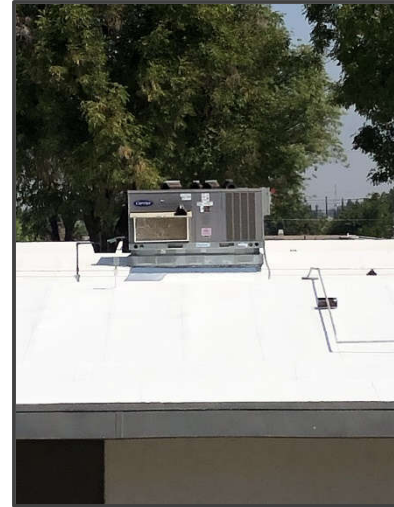
- ✓ The construction scope of this project is 100% complete
- ✓ The CBOC committee held a meeting at Highgrove on January 29, 2020 and took a tour of the modernized school
- ✓ Final closeout of project is pending

# Highgrove Elementary School

## Completed Project Pictures



New classroom & furniture



New HVAC Units



New grass and sidewalks



# Highgrove Elementary School

## Completed Project Pictures



New landscaping between existing buildings



New workrooms



New kinder play area

# Highgrove Elementary School

## Project Rendering





# Harrison Elementary School

## Measure O Campus Improvements

### Project Description

Harrison Elementary School was built in 1964. The site has 11 portable classroom buildings. Under Measure O, Harrison Elementary School received a new parking and drop-off area, new classroom building with 5 classrooms, HVAC system, frontage to administration, and removal of portables.

<b>Project Group:</b>	Group A
<b>Architect:</b>	ATI Architects & Engineers
<b>DSA Status:</b>	<b>Approved</b> on March 7, 2019
<b>Construction:</b>	<b>Completed - April 2021</b>
<b>Project Budget:</b>	\$12,369,531

### Project Status

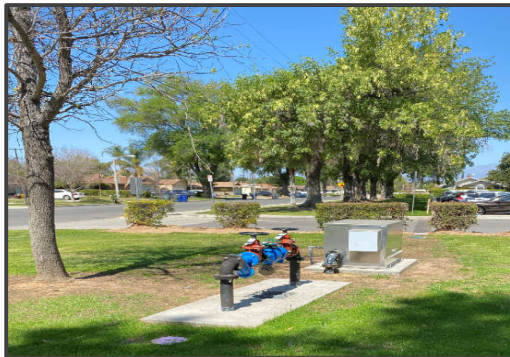
- ✓ The construction scope of this project is 100% complete
- ✓ Final closeout of project is pending

# Harrison Elementary School

## Completed Project Pictures



Completed Administration Building



New Classroom Building

# Harrison Elementary School

## Project Rendering





# Harrison Elementary School

## New Site Plan



# Jefferson Elementary School

## Measure O Campus Improvements

### Project Description

Jefferson Elementary School was built in 1948. The site currently has 16 portable classroom buildings. Under Measure O, Jefferson Elementary School received a new 1-story 6 kinder classroom building and corresponding playground area, full modernization of Buildings M and N, including sinks, cabinetry, roofing, HVAC, windows, lighting, paint, drinking fountain replacement, upgrades to restroom facilities, and demolition of 5 classrooms.

<b>Project Group:</b>	Group A
<b>Architect:</b>	WLC Architects
<b>DSA Status:</b>	<b>Approved</b> on February 28, 2019
<b>Construction:</b>	<b>Completed</b> – April 2021
<b>Project Budget:</b>	\$18,407,115

### Project Status

- ✓ The construction scope of this project is 100% complete

# Jefferson Elementary School

## Completed Project Pictures



Administration Remodel Building



Multi-Purpose Room



New Kinder Wing



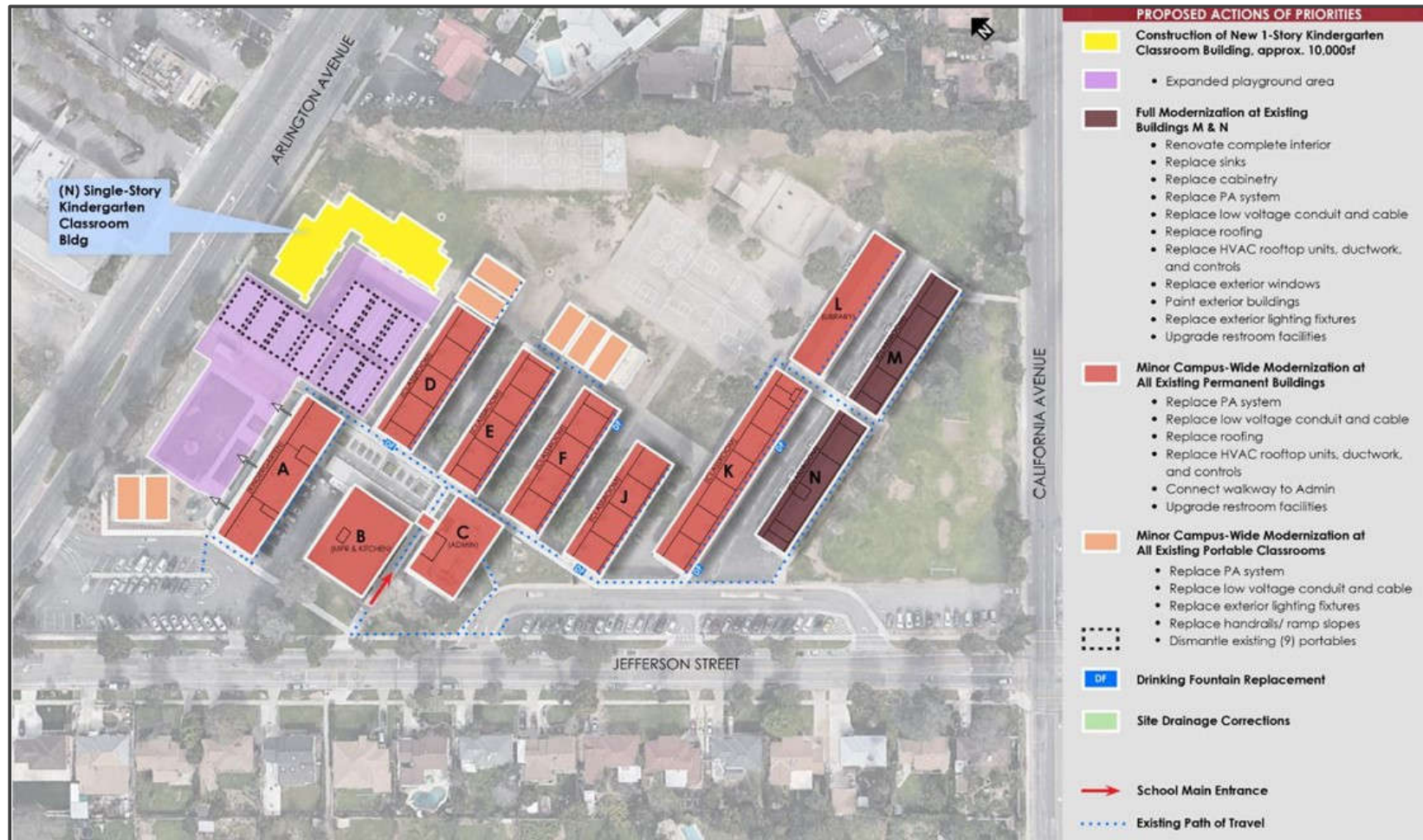
# Jefferson Elementary School

## Kinder Exterior Building Rendering



# Jefferson Elementary School

## New Site Plan



# Madison Elementary School

## Measure O Campus Improvements

### Project Description

Madison Elementary School was built in 1952. The site currently has 22 portable classroom buildings. Under Measure O, Madison Elementary School received a 5 kinder classroom building, kinder play area, drop-off and parking lot, lunch shelter, curb appeal improvements, and removal of 5 portables.

<b>Project Group:</b>	Group A
<b>Architect:</b>	LPA Architects
<b>DSA Status:</b>	<b>Approved</b> on March 29, 2019
<b>Construction:</b>	<b>Completed</b> – June 2021
<b>Project Budget:</b>	\$18,631,461

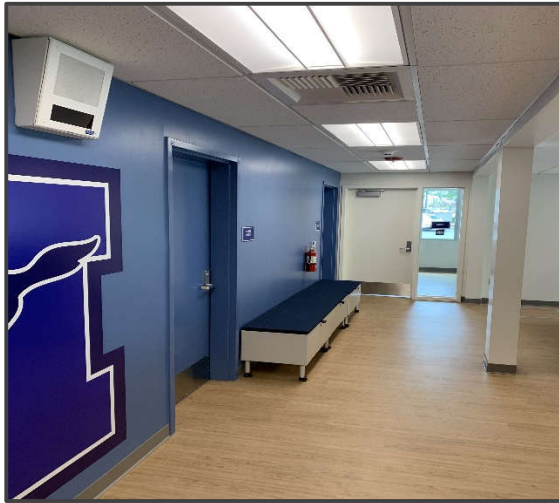
### Project Status

✓ Completed and occupied



# Madison Elementary School

## Completed Project Pictures



# Madison Elementary School

## Project Renderings





# Madison Elementary School

## New Site Plan





# John Adams Elementary School

## Measure O Campus Improvements

### Project Description

John Adams Elementary School was built in 1962 on a 7.6 acre site. Under Measure O, the school received a new single-story five (5) Kindergarten classroom building, removal of five (5) existing portable classrooms, new kindergarten play area that includes new landscaping, shades trees, and playground equipment, new decomposed granite walking path area with new landscape and irrigation, new drop-off area and parking lot off of John Adams Street that includes twenty-two (22) standard parking spaces and two (2) ADA parking spaces, and related site work.

<b>Project Group:</b>	Group C
<b>Architect:</b>	LPA Architects
<b>DSA Status:</b>	<b>Approved</b> on July 9, 2019
<b>Construction:</b>	<b>Completed</b> – November 2021
<b>Project Budget:</b>	\$13,995,922

### Project Status

- ✓ Completed and occupied

# John Adams Elementary School

## Completed Project Pictures



# John Adams Elementary School

## Completed Project Pictures





# John Adams Elementary School

## New Site Plan



### **BUILDINGS**

NEW KINDER BUILDING

LOW-LEVEL RENO. (3) PORTABLES

(5) REMOVE EXISTING PORTABLES

(3) RELOCATE EXISTING PORTABLES

(1) DEMOLISH STORAGE UNIT

**TOTAL BUILDING RENOVATION**

### **SITE**

NEW DROP OFF

NEW PARKING

HARDSCAPE IMPROVEMENTS

EXTERIOR FENCE IMPROVEMENTS

NEW FENCE

NEW KINDER PLAY GROUND

NEW STORM WATER TREATMENT

SAND PIT PLAY AREA IMPROVEMENTS

SITE UTILITIES IMPROVEMENTS

**TOTAL SITE IMPROVEMENTS**

# Sunshine Early Childhood Center

## Measure O Campus Improvements

### Project Description

Sunshine Early Childhood Center was built in 1947. The site program houses the California Children Services (CCS), a county program that services students with special needs. Under Measure O, the site received a new portable building to relocate the CCS Program which relieved 3,000+ square feet for students of Sunshine. The site also received a new play structure, a light modernization, and a front campus facelift.

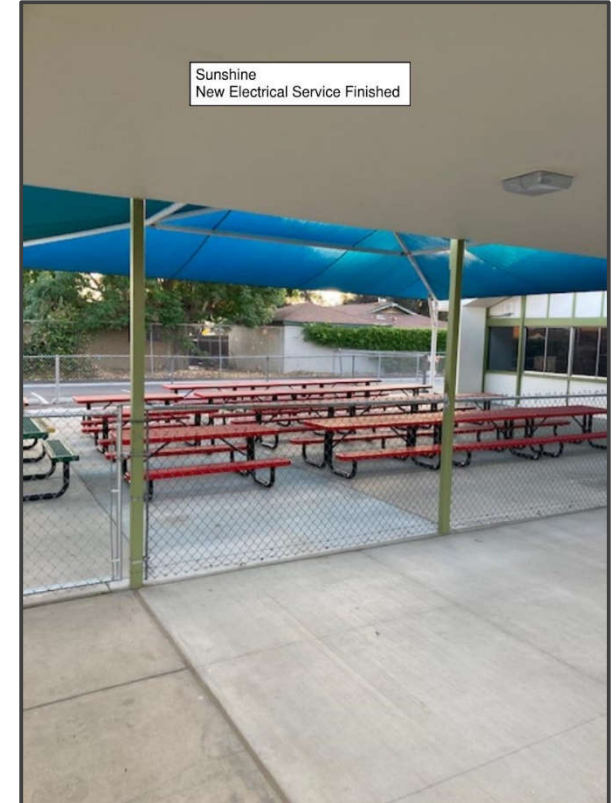
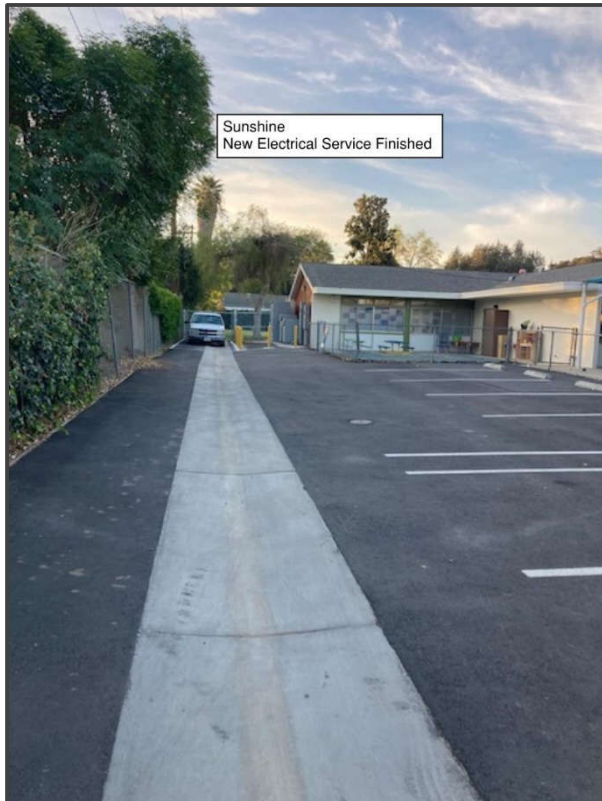
<b>Project Group:</b>	Group B
<b>Architect:</b>	GO Architects
<b>DSA Status:</b>	<b>Approved</b> on February 19, 2019
<b>Construction:</b>	<b>Completed</b> - December 13, 2021
<b>Project Budget:</b>	\$10,800,000

### Project Status

- ✓ Completed and occupied

# Sunshine Early Childhood Center

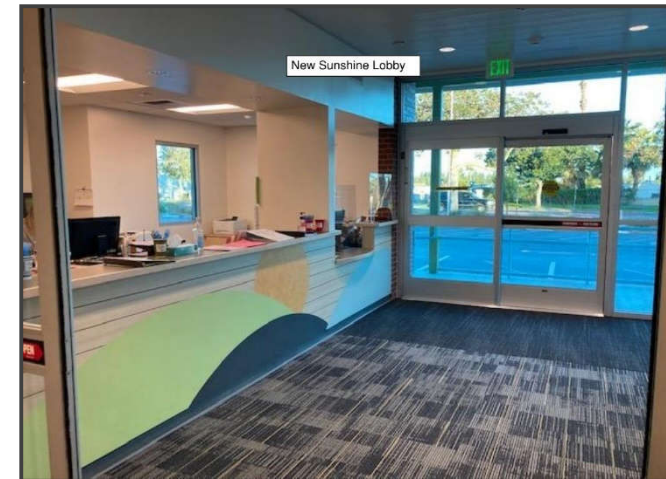
## Completed Project Pictures





# Sunshine Early Childhood Center

## Completed Project Pictures



# Magnolia Elementary School

## Measure O Campus Improvements

### Project Description

Magnolia Elementary School is one of the oldest schools in the District, built in 1898. Under Measure O, the school will receive construction of two (2) new single-story classroom buildings with ten (10) standard classrooms, student restrooms, and a staff restroom, removal of ten (10) existing portable classrooms from the site at the end of the project, new kindergarten play area, new drop-off area off of Maplewood Place, new flooring in cafeteria, and related site work.

<b>Project Group:</b>	Group C
<b>Architect:</b>	ATI Architects
<b>DSA Status:</b>	<b>Approved</b> on April 11, 2019
<b>Construction:</b>	<b>Completed</b> – November 2021
<b>Project Budget:</b>	\$12,616,082

### Project Status

- ✓ Completed and occupied

# Magnolia Elementary School

## Completed Project Pictures





# Magnolia Elementary School

## Completed Project Pictures



# Magnolia Elementary School

## Project Rendering



# Andrew Jackson Elementary School

## Measure O Campus Improvements

### Project Description

Andrew Jackson Elementary School was built in 1959. Under Measure O, project scope includes construction of a new two-story classroom building with eight (8) standard classrooms, staff and student restrooms, and custodial areas, removal of eight (8) existing portables, new fencing, new parking lot and drop off areas, thirty-five (35) standard stalls and two (2) HC stalls, renovation of six (6) existing kindergarten classrooms, new kindergarten play area that includes new landscaping, shade trees, and new playground equipment, renovation of existing classroom buildings and library, and site work including the removal and replacement of existing damaged sewer lines, new underground infrastructure for the new building, ADA upgrades, and relocation of Head Start portable classroom, new interior restroom and finishes, new play equipment, landscaping & hard-scape.

<b>Project Group:</b>	Group B
<b>Architect:</b>	WLC Architects
<b>DSA Status:</b>	<b>Approved</b> on August 28, 2019
<b>Construction:</b>	<b>Completed</b> - March 2022
<b>Project Budget:</b>	\$22,117,380

### Project Status

- ✓ Modernization & New Construction - 100% Complete
- ✓ Kindergarten & Head Start play areas - 100% Complete
- ✓ Head Start Landscaping & Field restoration new irrigation & sod - 100% Complete - Under 90-Day Maintenance Period
- ✓ Notices of Completion were approved by the Board of Education on 5-17-22



# Andrew Jackson Elementary School

## Completed Project Pictures



New 2-Story Classroom Building – J Backside



New 2-Story Classroom Building



Field Irrigation – Sod Installation



New Kindergarten Play Area

# Andrew Jackson Elementary School

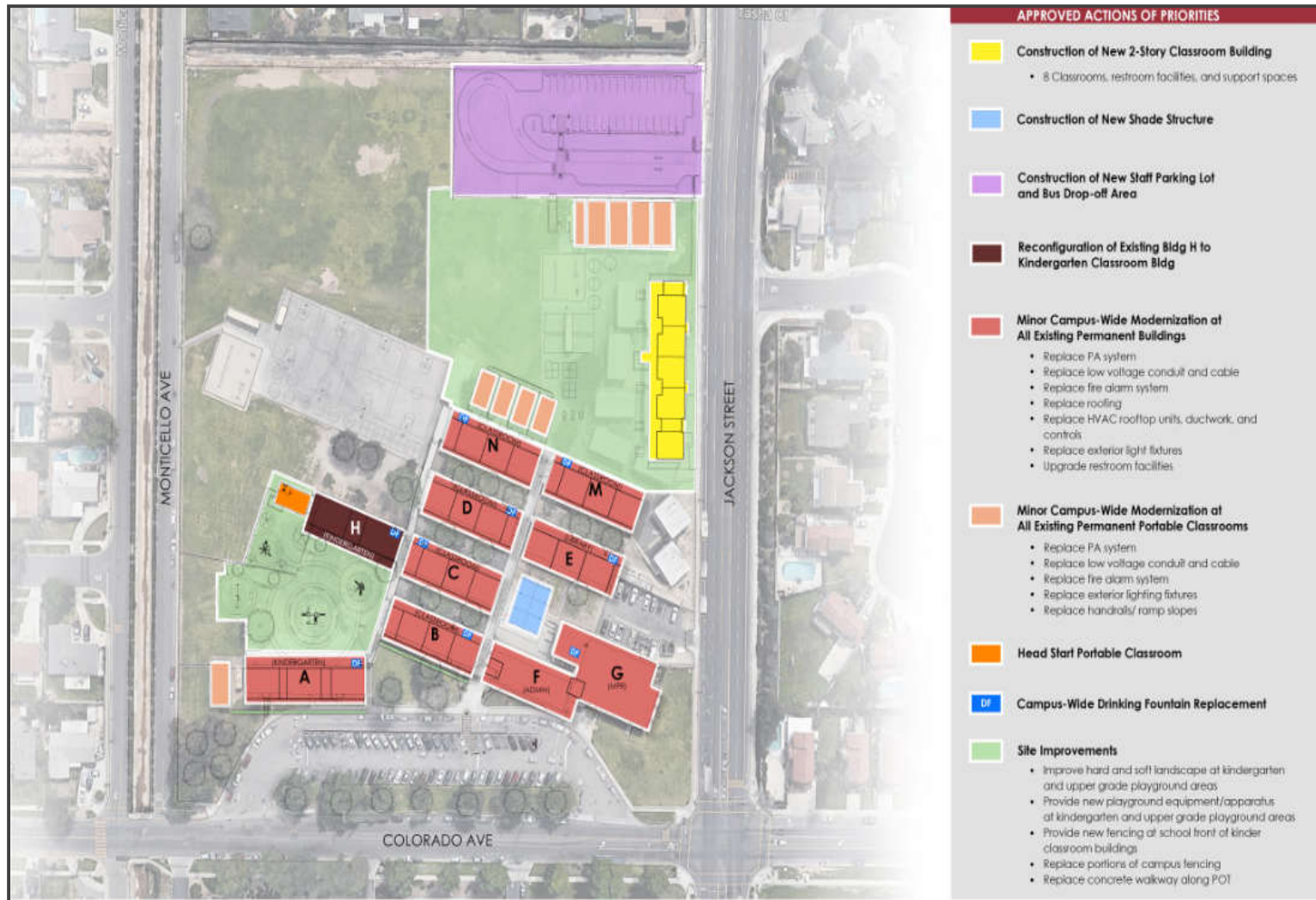
## Project Rendering





# Andrew Jackson Elementary School

## New Site Plan





# Riverside Polytechnic High School

## Measure O Campus Improvements

### Project Description

Riverside Polytechnic High School was built in 1965. Under Measure O, project includes ADA upgrades to the main campus, and phase II includes the addition of a new auxiliary gym.

<b>Project Group:</b>	Group B
<b>Architect:</b>	WLC Architects
<b>DSA Submittal:</b>	March 30, 2019
<b>Phase I Construction:</b>	<b>Completed</b> - September 2021
<b>Phase II Gym Construction:</b>	<b>Completed</b> – May 2022
<b>Project Budget:</b>	\$24,039,894

### Project Status

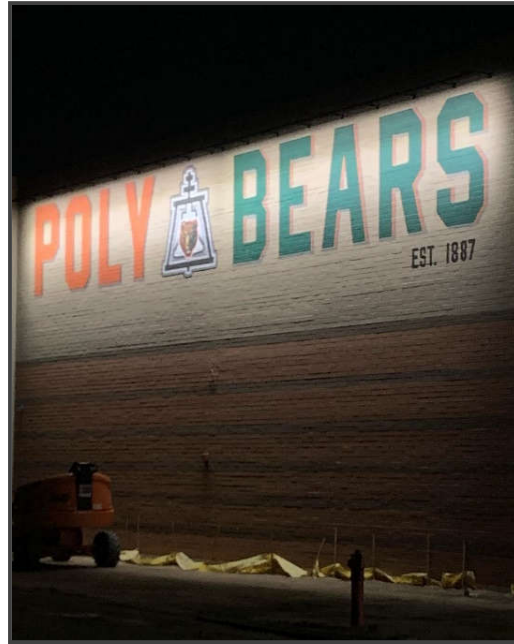
- ✓ The construction scope of work is 100% complete
- ✓ Final closeout is pending

## Riverside Polytechnic High School

### Completed Project Pictures



Corridor Pavers



Exterior New Gym

# Riverside Polytechnic High School

## Completed Project Pictures



New Sod



Interior Gym



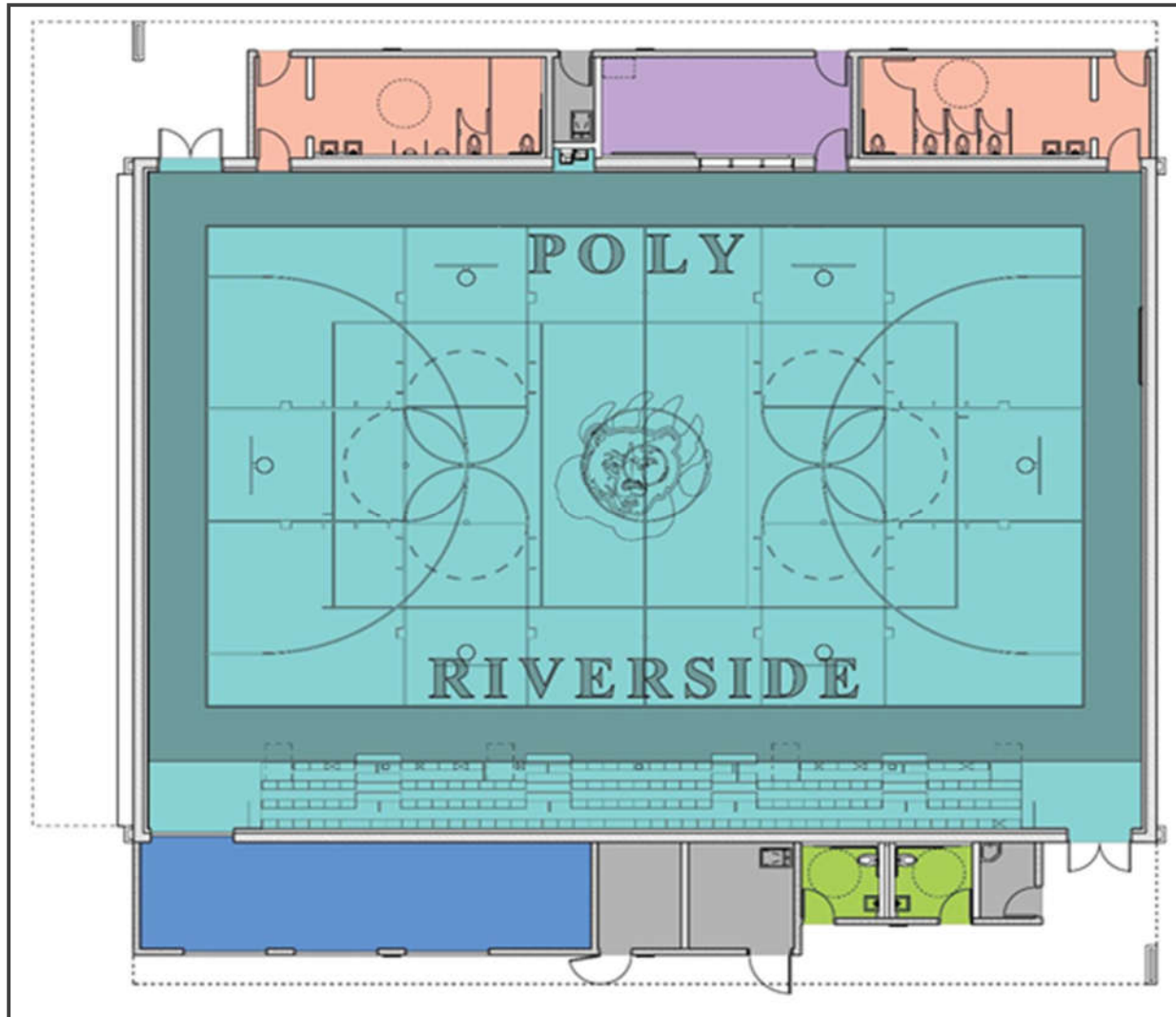
# Riverside Polytechnic High School

New Entry Project Rendering



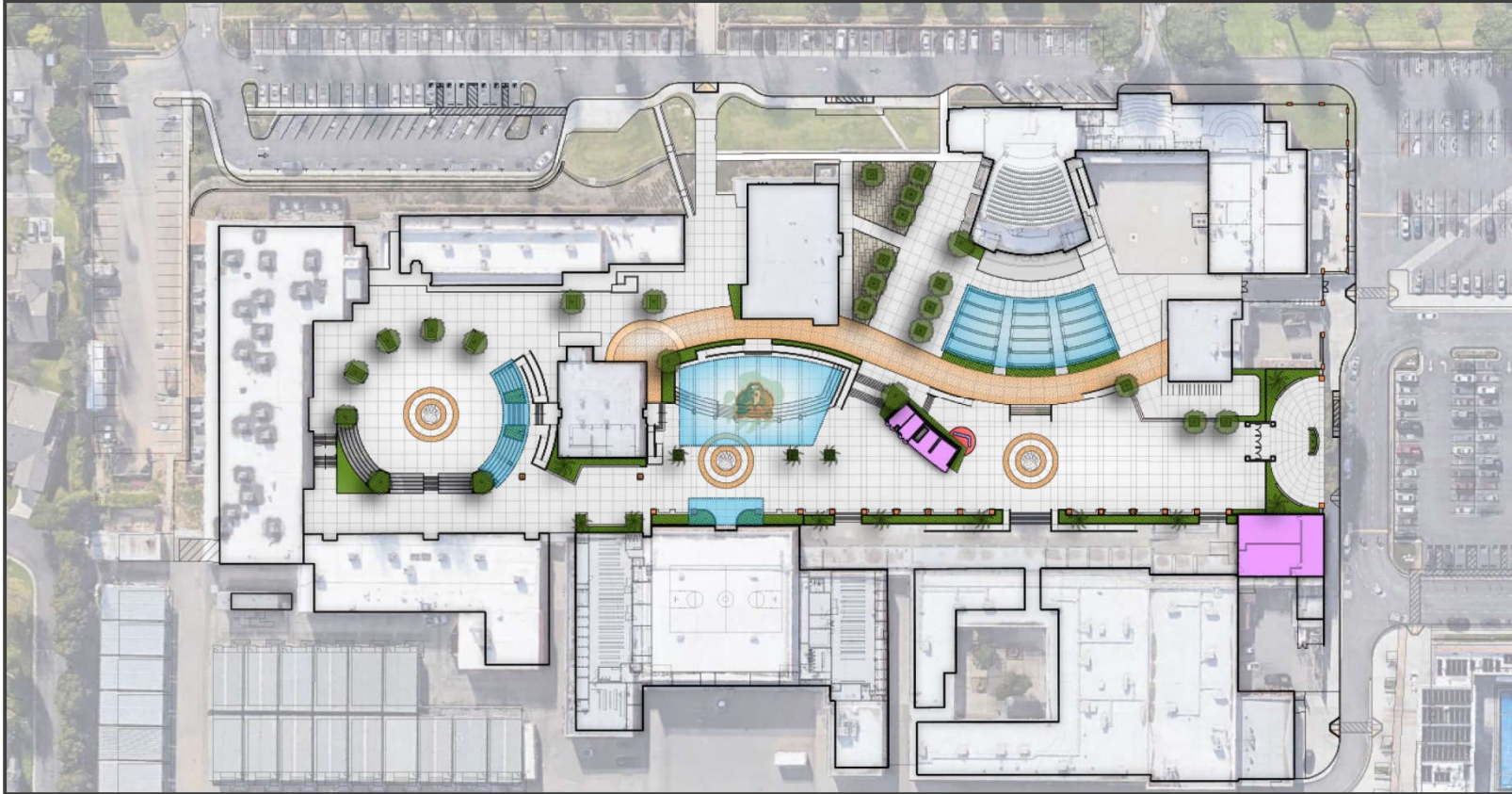
# Riverside Polytechnic High School

## Riverside Polytechnic Gym Rendering



# Riverside Polytechnic High School

## New Site Plan





# Arlington High School

## Measure O Campus Improvements

### Project Description

Arlington High School was built in 1973. Under Measure O, the project includes three (3) science and three (3) special education with life skills learning area, upgrades to media arts building, courtyard and site enhancements, moderate modernization, renovation of existing pool, new auxiliary gym, and stadium expansion.

<b>Project Group:</b>	Group C
<b>Architect:</b>	Ruhnau Clarke Architects
<b>DSA Status:</b>	<b>Approved</b>
<b>Construction:</b>	<b>Completed</b> – May 2022
<b>Project Budget:</b>	\$26,607,776

### Project Status

- ✓ The construction scope of work is complete
- ✓ Final closeout is pending

# Arlington High School

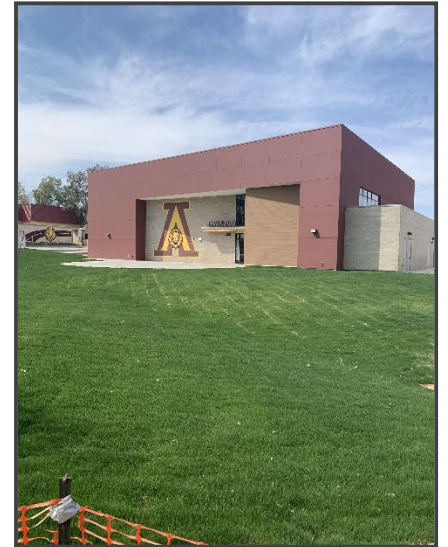
## Completed Project Pictures



New Ticket Booth



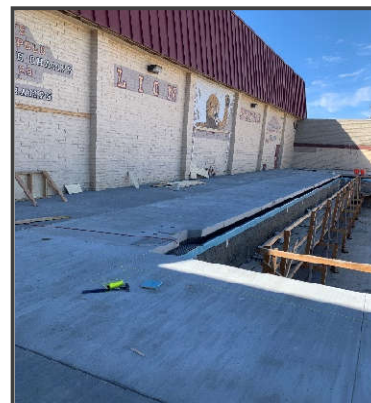
New Bio-Med Building



Exterior Auxiliary Gym



Interior Auxiliary Gym



Pool Deck Upgrades

# Arlington High School

## New Site Plan

