



# Riverside Unified School District

## Citizens' Bond Oversight Committee Report

(Financial Data as of 1/31/2022)

March 15, 2022 Meeting

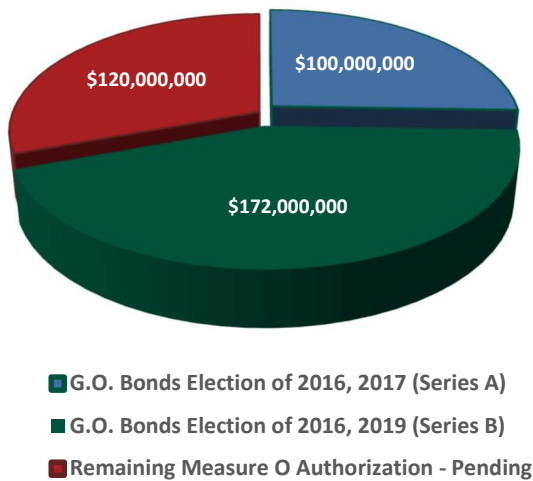
Report by:



3380 14th Street | Riverside, CA 92501  
(951) 788-7135 [www.riversideunified.org](http://www.riversideunified.org)



### Measure O Authorization

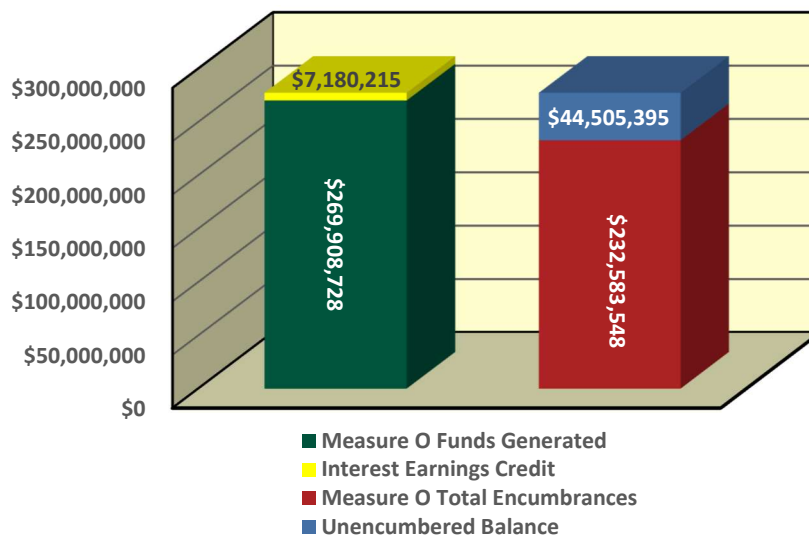


## Measure O Overview

On November 8, 2016, the voters of the Riverside Unified School District approved Measure O General Obligation Bonds (the “Bonds”) with a 70% approval rate. Measure O will generate \$392 million dollars over the next 10 to 15 years to improve and build new capital facilities in Riverside Unified.

The Bonds will be used to repair and upgrade District aging school infrastructure, classrooms and buildings, build new schools, modernize school facilities with 21st century technology, improve access for students with disabilities, provide classroom and labs for career and technical education classes, improve school safety by modernizing security systems, retrofitting buildings to be earthquake proof, and upgrading emergency communications.

### Measure O Total Revenue = \$277,088,943



## Citizens' Bond Oversight Committee Members as of March 2022

Current Board Members(as of March 2022)				
	Group Representation	Name	Board Approved	Term Expiration
1	Parent and Community	Amanda DeLao	1/21/21	January 2023
2	Community Member & Parent	Art Alcaraz	1/21/21	January 2023
3	Senior Citizen Organization	Douglass Kroon	2/24/22	February 2024
4	Community Member & Parent	Keith Nelson	2/24/22	February 2024
5	Business, Parent & Community	Lara E. Martin	1/21/21	January 2023
6	Tax Payer Association	Marilyn Robinson	1/21/21	January 2023
7	Parent, PTA & Community	Martin de Campo	1/21/21	January 2023
8	**VACANT**			
9	**VACANT**			
10	**VACANT**			
11	**VACANT**			
12	**VACANT**			
13	**VACANT**			
Termed-out Board Members(as of March 2022)				
	Group Representation	Name	Term Expiration	
	Community Member	Tom Evans	December 2021	
	Senior Citizen Organization	Bob Garcia	December 2021	
	Community Member/Parent	Tina Grande-Field	December 2021	
	Parent/PTA Parent	Diane Kwasman	January 2022	
	Parent/Community Member At-Large	Sarah Simpson	January 2022	
	Community Member	Terry Walling	December 2021	
	Parent & PTA Member	David Bristow	January 2022	

# **Measure O Project Status Updates**





# Andrew Jackson Elementary School

## Measure O Campus Improvements

### Project Description

Andrew Jackson Elementary School was built in 1959. Under Measure O, project scope includes construction of a new two-story classroom building with eight (8) standard classrooms, staff and student restrooms, and custodial areas, removal of eight (8) existing portables, new fencing, new parking lot and drop off areas, thirty-five (35) standard stalls and two (2) HC stalls, renovation of six (6) existing kindergarten classrooms, new kindergarten play area that includes new landscaping, shade trees, and new playground equipment, renovation of existing classroom buildings and library, and site work including the removal and replacement of existing damaged sewer lines, new underground infrastructure for the new building, ADA upgrades, and relocation of Head Start portable classroom, new interior restroom and finishes, new play equipment, landscaping & hard-scape.

<b>Project Group:</b>	Group B
<b>Architect:</b>	WLC Architects
<b>DSA Status:</b>	<b>Approved</b> on August 28, 2019
<b>Bidding &amp; Award:</b>	Spring 2020
<b>Construction:</b>	April 2020 to March 2022
<b>Project Budget:</b>	\$22,117,380
<b>Percentage Complete:</b>	95%

### Project Status

- ✓ Modernization - Buildings A, B, C, D, E, F, G, H, M & N - 100% complete and turned over to the site
- ✓ New construction - staff parking lot, lunch shelter & 2-Story classroom building J - 100 % complete and turned over to the site - pending some punch list repair items
- ✓ Kindergarten & Head Start play area and structures - 100 % complete, certified and turned over to the site
- ✓ Head Start portable classroom relocation - 100% Complete and turned over to the site - pending some punch list repair items
- ✓ Interim housing portable classroom demolition and asphalt repair work - 100% complete
- ✓ Playfield restoration - Ongoing grading & irrigation work - Estimated completion March 2022
- ✓ Pending final closeout

# Andrew Jackson Elementary School

## Construction Pictures



New Lunch Shelter



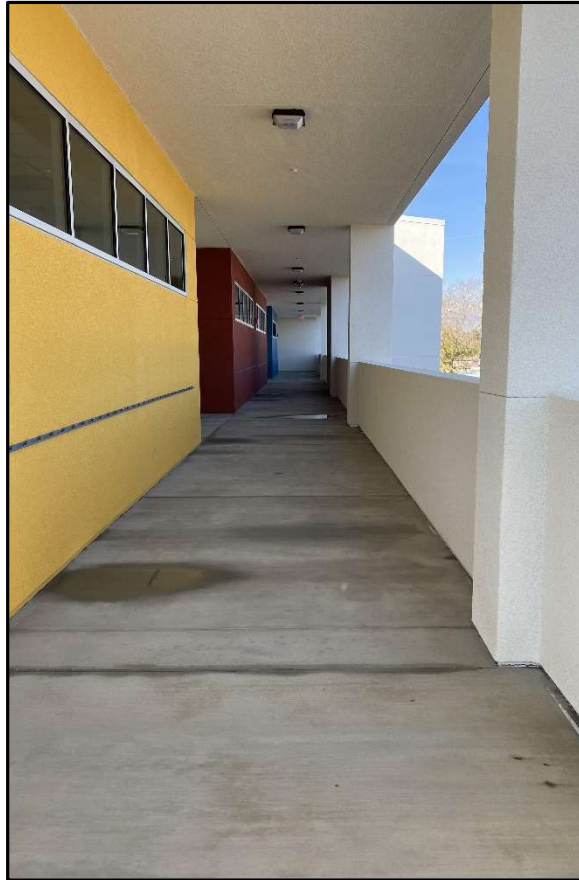
Kinder New Swing Structure

# Andrew Jackson Elementary School

## Construction Pictures



New Head Start Play Area



New Classroom Building J 2<sup>nd</sup> Floor Walkway



New Girl's Restroom



# Andrew Jackson Elementary School

## Construction Pictures



New 2-Story Classroom Building J

# Andrew Jackson Elementary School

## Project Rendering





# Andrew Jackson Elementary School

## Existing Site Plan



# Andrew Jackson Elementary School

## New Site Plan



### APPROVED ACTIONS OF PRIORITIES

- **Construction of New 2-Story Classroom Building**
  - 8 Classrooms, restroom facilities, and support spaces
- **Construction of New Shade Structure**
- **Construction of New Staff Parking Lot and Bus Drop-off Area**
- **Reconfiguration of Existing Bldg H to Kindergarten Classroom Bldg**
- **Minor Campus-Wide Modernization at All Existing Permanent Buildings**
  - Replace PA system
  - Replace low voltage conduit and cable
  - Replace fire alarm system
  - Replace roofing
  - Replace HVAC rooftop units, ductwork, and controls
  - Replace exterior light fixtures
  - Upgrade restroom facilities
- **Minor Campus-Wide Modernization at All Existing Permanent Portable Classrooms**
  - Replace PA system
  - Replace low voltage conduit and cable
  - Replace fire alarm system
  - Replace exterior lighting fixtures
  - Replace handrails/ ramp slopes
- **Head Start Portable Classroom**
- **Campus-Wide Drinking Fountain Replacement**
- **Site Improvements**
  - Improve hard and soft landscape at kindergarten and upper grade playground areas
  - Provide new playground equipment/apparatus at kindergarten and upper grade playground areas
  - Provide new fencing at school front of kindergarten buildings
  - Replace portions of campus fencing
  - Replace concrete walkway along POT



# Magnolia Elementary School

## Measure O Campus Improvements

### Project Description

Magnolia Elementary School is one of the oldest schools in the District, built in 1898. Under Measure O, the school will receive construction of two (2) new single-story classroom buildings with ten (10) standard classrooms, student restrooms, and a staff restroom, removal of ten (10) existing portable classrooms from the site at the end of the project, new kindergarten play area, new drop-off area off of Maplewood Place, new flooring in cafeteria, and related site work.

<b>Project Group:</b>	Group C
<b>Architect:</b>	ATI Architects
<b>DSA Status:</b>	<b>Approved</b> on April 11, 2019
<b>Bidding &amp; Award:</b>	February to May 2020
<b>Construction:</b>	<b>Completion</b> – November 2021
<b>Project Budget:</b>	\$12,616,082
<b>Percentage Complete:</b>	100%

### Project Status

- ✓ New building - completed and occupied
- ✓ New kindergarten play area - completed and in use
- ✓ New site surfaces - completed
- ✓ New drop off loop - completed
- ✓ Final punch list being worked on
- ✓ Pending final closeout

# Magnolia Elementary School

## Construction Pictures



# Magnolia Elementary School

## Construction Pictures





# Magnolia Elementary School

## Project Rendering



# Magnolia Elementary School

## Existing Site Plan





# Magnolia Elementary School

## New Site Plan



### NEW AND MODERNIZATION

- |   |                              |
|---|------------------------------|
| 1 | ADMINISTRATION               |
| 2 | CLASSROOMS                   |
| 3 | LIBRARY / MEDIA CENTER       |
| 4 | AUDITORIUM / MPR / CAFETERIA |
| 5 | AUDITORIUM KITCHEN           |

### PRIORITY # DESCRIPTION

- |   |  |
|---|--|
| 1 | REPLACE 10 PORTABLES WITH NEW SINGLE STORY BUILDINGS   |
| 2 | DROP OFF/PICK UP AREA                                  |
| 3 | NEW KINDER PLAY AREA                                   |
| 4 | HARDSCAPE / FLOOR DRAINAGE CONDITIONS                  |
| 5 | INTERIM HOUSING (PORTABLE CLASSROOMS AND PARKING AREA) |

### ADD ALTERNATE

- |   |  |
|---|--|
| 6 | AUDITORIUM / MULTI-PURPOSE MINOR REMODEL |
| 7 | HVAC REPLACEMENT FOR BLDG'S A, K, & M    |

# John Adams Elementary School

## Measure O Campus Improvements

### Project Description

John Adams Elementary School was built in 1962 on a 7.6 acre site. Under Measure O, the school received a new single-story five (5) Kindergarten classroom building, removal of five (5) existing portable classrooms, new kindergarten play area that includes new landscaping, shades trees, and playground equipment, new decomposed granite walking path area with new landscape and irrigation, new drop-off area and parking lot off of John Adams Street that includes twenty-two (22) standard parking spaces and two (2) ADA parking spaces, and related site work.

<b>Project Group:</b>	Group C
<b>Architect:</b>	LPA Architects
<b>DSA Status:</b>	<b>Approved</b> on July 9, 2019
<b>Bidding &amp; Award:</b>	January 2020 to March 2020
<b>Construction:</b>	<b>Completion</b> – November 2021
<b>Project Budget:</b>	\$13,995,922
<b>Percentage Complete:</b>	100%

### Project Status

- ✓ Primary project scope complete
- ✓ Buildings occupied
- ✓ Pending completion of punch-walk items
- ✓ Pending final closeout

# John Adams Elementary School

## Construction Pictures





# John Adams Elementary School

## Construction Pictures



# John Adams Elementary School

## Project Rendering



# John Adams Elementary School

## Existing Site Plan





# John Adams Elementary School

## New Site Plan



# Sunshine Early Childhood Center

## Measure O Campus Improvements

### Project Description

Sunshine Early Childhood Center was built in 1947. The site program houses the California Children Services (CCS), a county program that services students with special needs. Under Measure O, the site received a new portable building to relocate the CCS Program which relieved 3,000+ square feet for students of Sunshine. The site also received a new play structure, a light modernization, and a front campus facelift.

<b>Project Group:</b>	Group B
<b>Architect:</b>	GO Architects
<b>DSA Status:</b>	<b>Approved</b> on February 19, 2019
<b>Bidding &amp; Award:</b>	February to May 2020
<b>Construction:</b>	<b>Completed</b> - December 13, 2021
<b>Project Budget:</b>	\$10,800,000
<b>Percentage Complete:</b>	100%

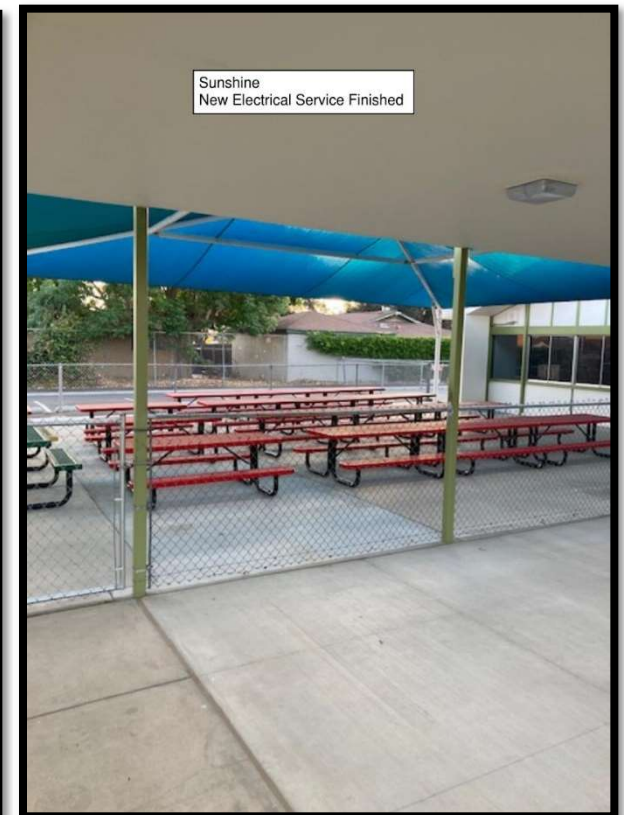
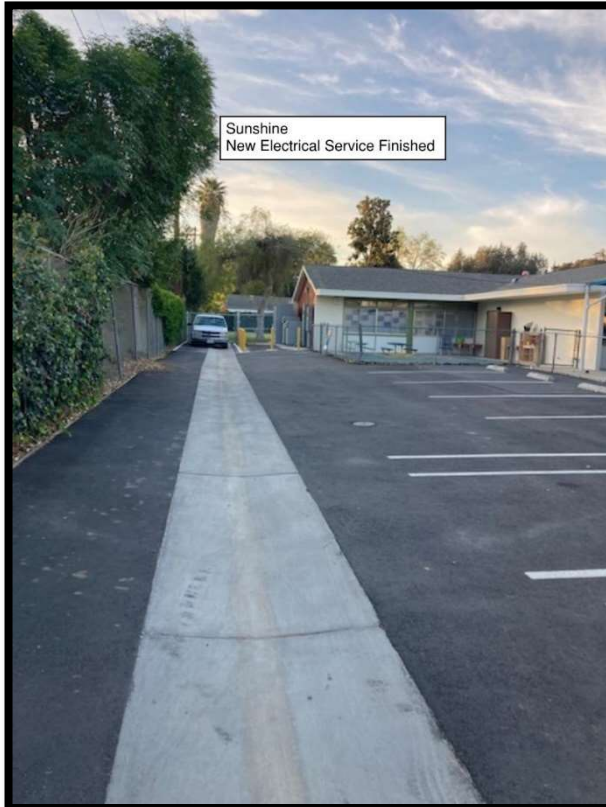
### Project Status

- ✓ Building A - completed and occupied
- ✓ Building B - completed and occupied
- ✓ Building C - completed and occupied
- ✓ Electrical upgrade - completed and in use
- ✓ Pending completion of punch-walk items
- ✓ Pending final closeout



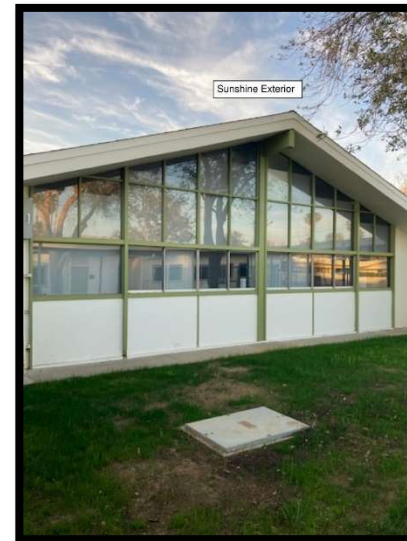
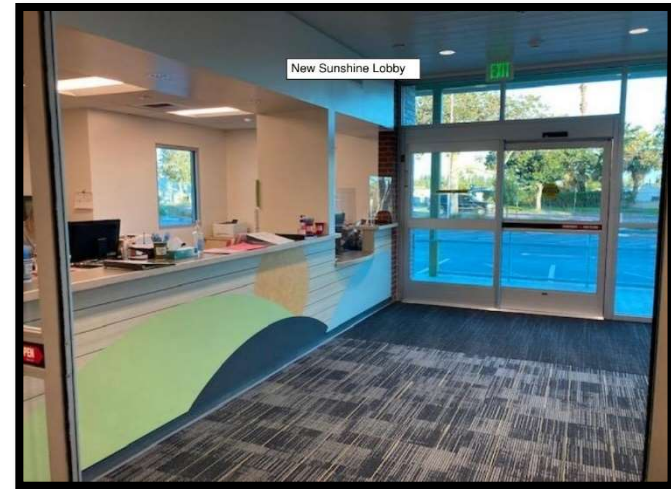
# Sunshine Early Childhood Center

## Construction Pictures



# Sunshine Early Childhood Center

## Construction Pictures





# Sunshine Early Childhood Center

## Project Rendering





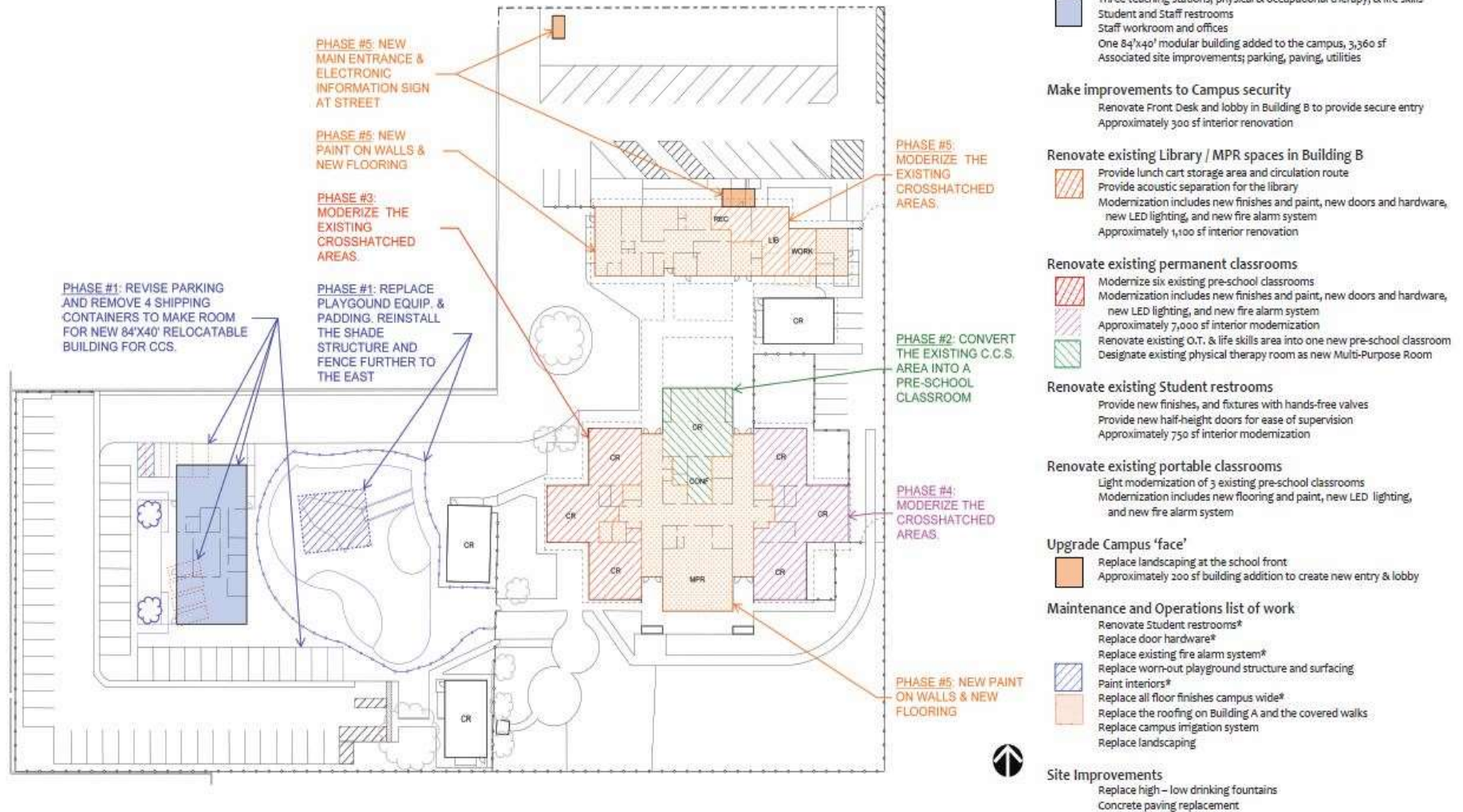
# Sunshine Early Childhood Center

Existing Site plan



# Sunshine Early Childhood Center

## New Site Plan





# Riverside Polytechnic High School

## Measure O Campus Improvements

### Project Description

Riverside Polytechnic High School was built in 1965. Under Measure O, project includes ADA upgrades to the main campus, and phase II includes the addition of a new auxiliary gym.

<b>Project Group:</b>	Group B
<b>Architect:</b>	WLC Architects
<b>DSA Submittal:</b>	March 30, 2019
<b>Phase I Construction:</b>	<b>Completed</b> - September 2021
<b>Phase II Gym Bid/Award:</b>	January 1, 2021
<b>Phase II Gym Construction:</b>	March 2021
<b>Project Budget:</b>	\$24,039,894
<b>Percentage Complete:</b>	85%

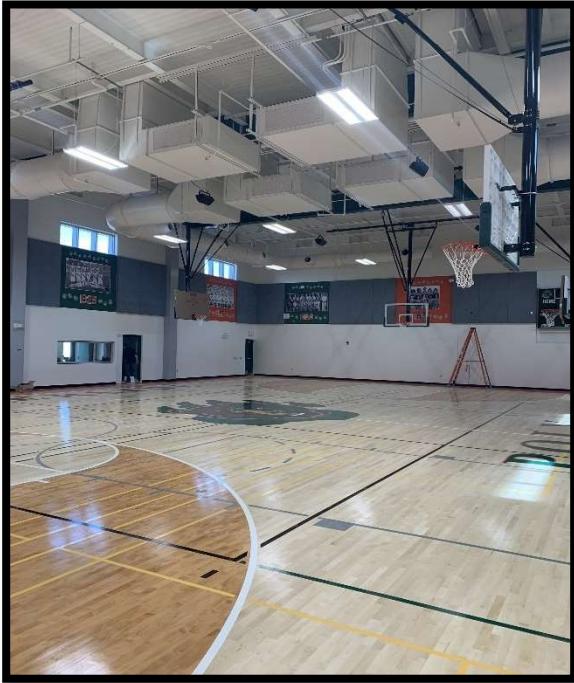
### Project Status

- ✓ Final finishes ongoing for the new Aux Gym
- ✓ Preparation for flat work concrete is ongoing
- ✓ Landscape repairs and cleanup ongoing
- ✓ Contractors have started to remove trailers and equipment



# Riverside Polytechnic High School

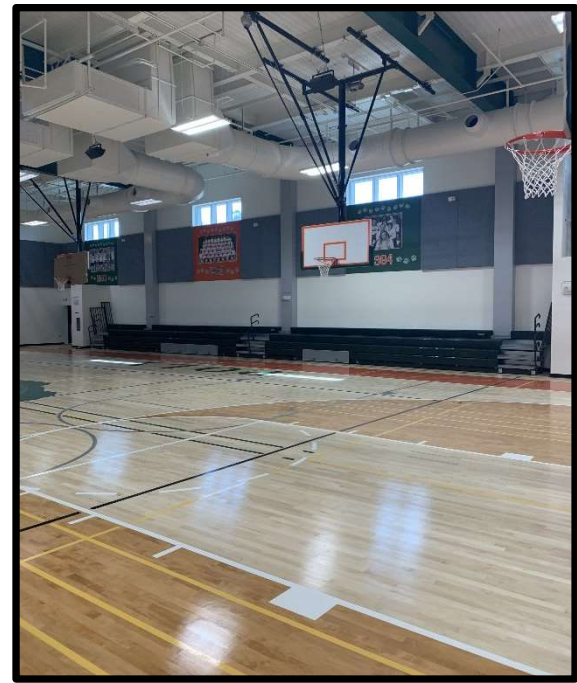
## Gym Construction Progress Pictures



Interior Gym



Prepping for Hardscape/Concrete



Interior Gym

## Riverside Polytechnic High School

New Entry Project Rendering



# Riverside Polytechnic High School

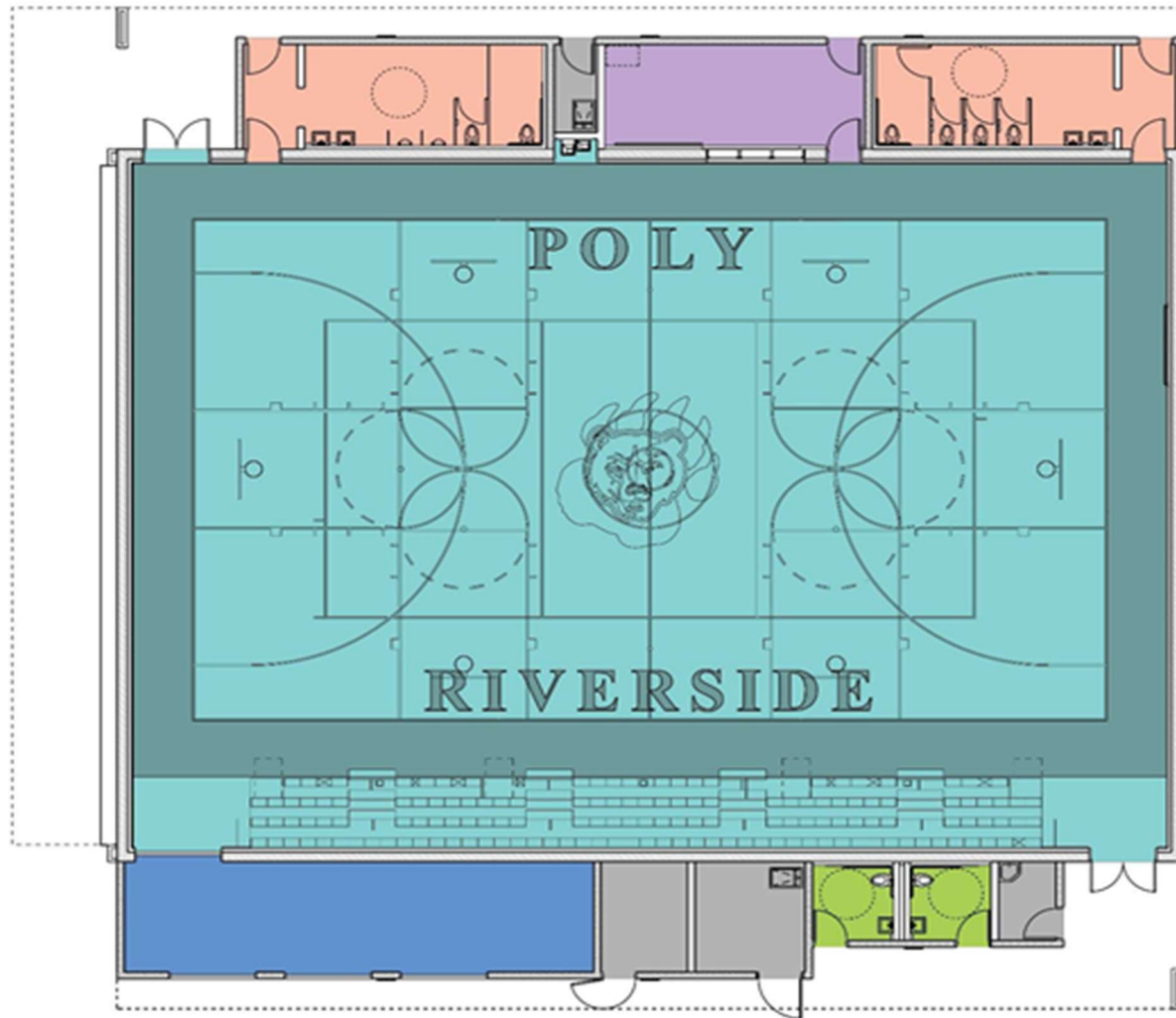
## Quad Project Rendering





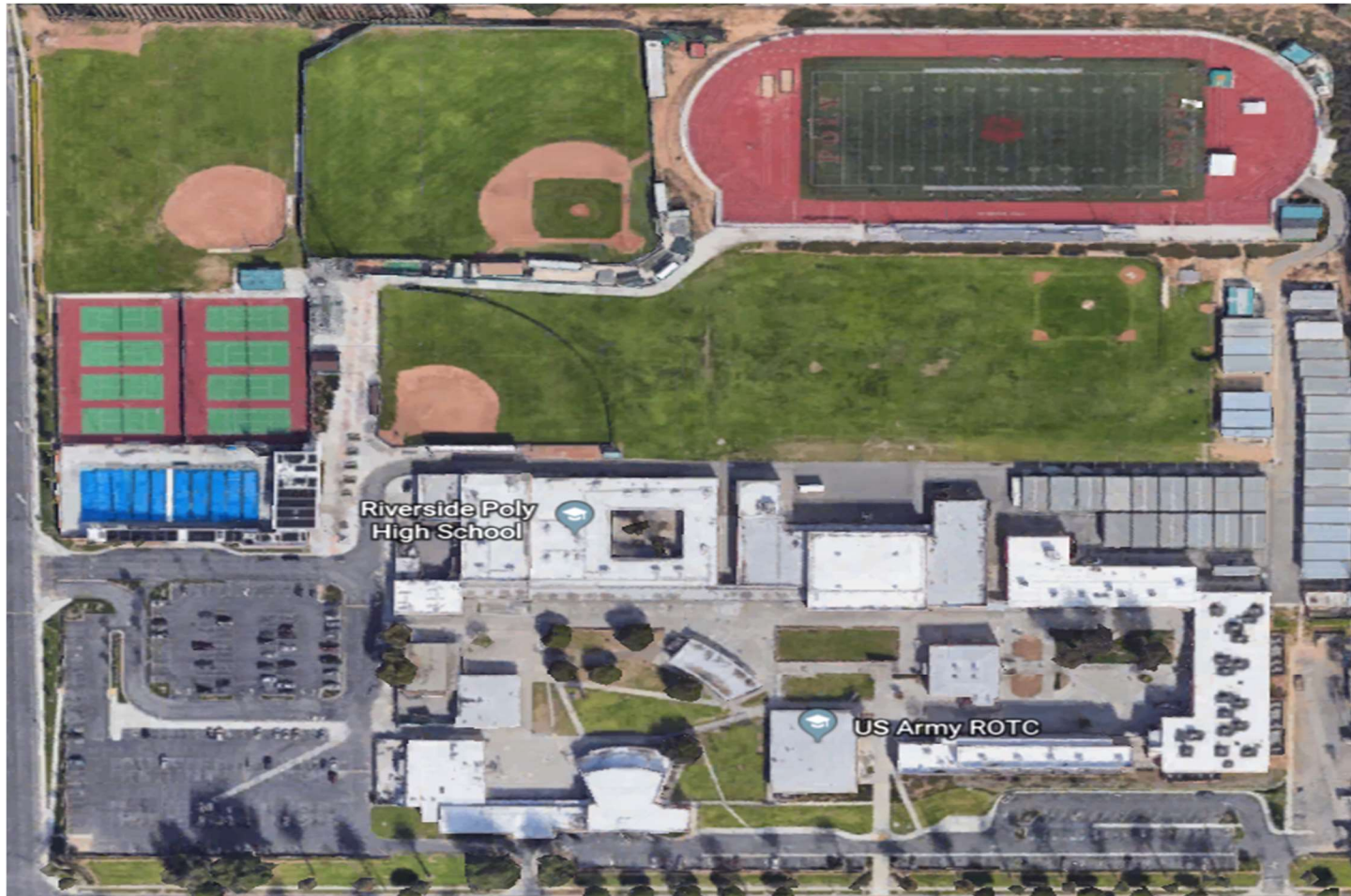
# Riverside Polytechnic High School

## Riverside Polytechnic Gym Rendering



# Riverside Polytechnic High School

## Existing Site Plan



# Arlington High School

## Measure O Campus Improvements

### Project Description

Arlington High School was built in 1973. Under Measure O, the project includes three (3) science and three (3) special education with life skills learning area, upgrades to media arts building, courtyard and site enhancements, moderate modernization, renovation of existing pool, new auxiliary gym, and stadium expansion.

<b>Project Group:</b>	Group C
<b>Architect:</b>	Ruhnau Clarke Architects
<b>DSA Status:</b>	<b>Approved</b>
<b>Bidding &amp; Award:</b>	Fall 2020
<b>Construction:</b>	December 2020 – June 2022
<b>Project Budget:</b>	\$26,607,776
<b>Percentage Complete:</b>	90%

### Project Status

- ✓ Building J, bio-med, the gym, and stadium expansion have been completed and occupied
- ✓ Work continues on the new ticket booth and pool renovation
- ✓ Includes full renovation of the pool deck, new plaster, tile, pump, heater, and other pool equipment

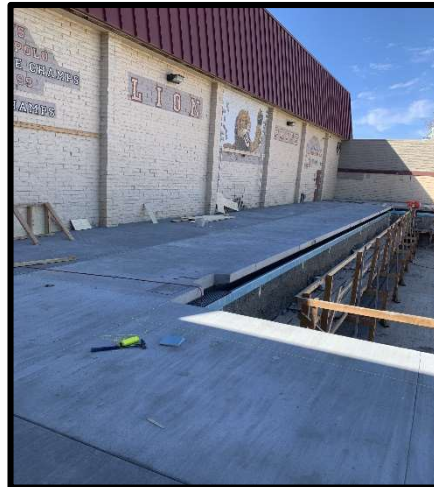


# Arlington High School

## Construction Progress Pictures



Pool Deck



Pool Deck



New Ticket Booth



Exterior Aux Gym



Interior Gym



Interior Gym



# Arlington High School

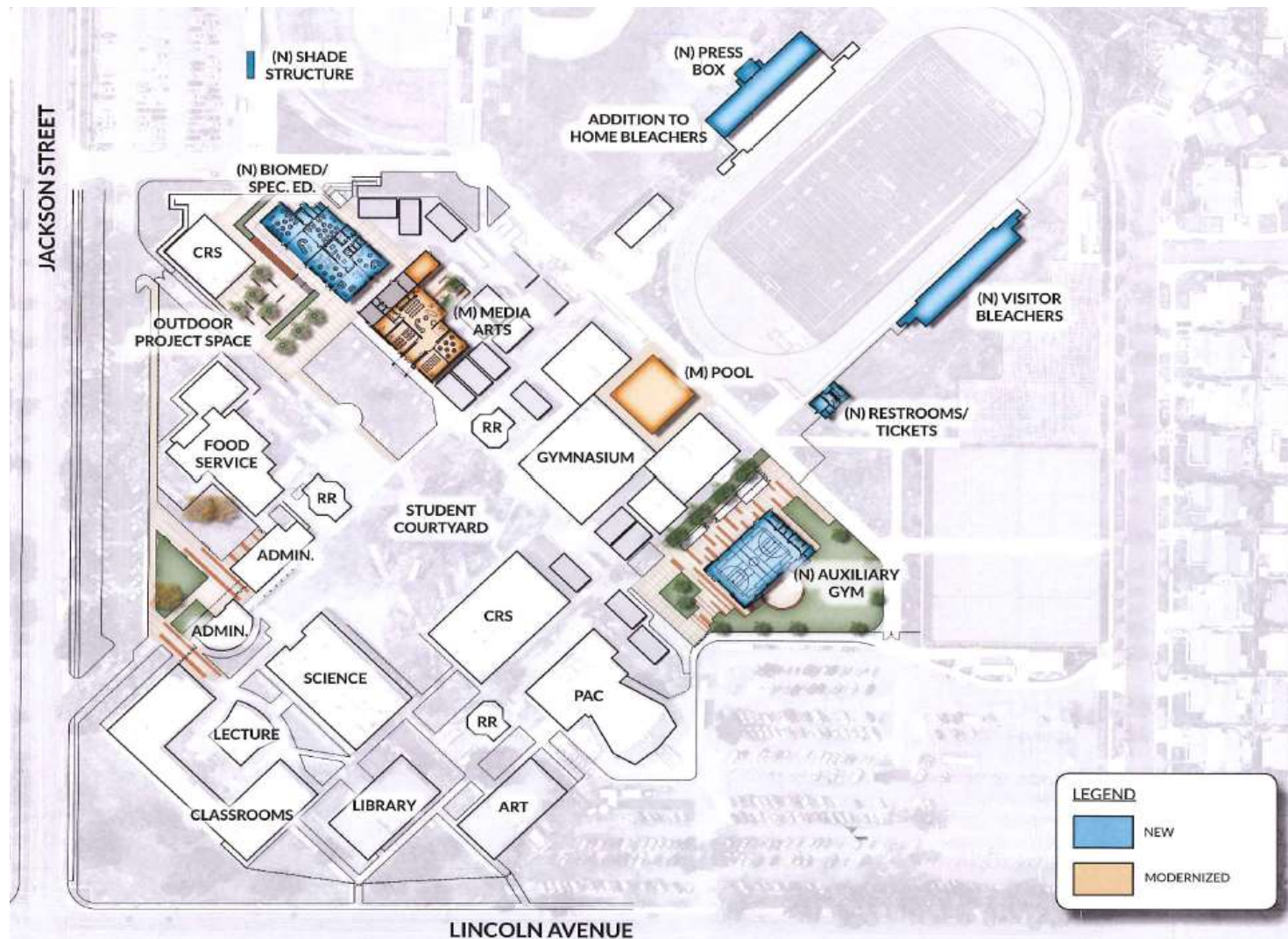
## Existing Site Plan





# Arlington High School

## New Site Plan





# Louisa May Alcott Elementary School

## Measure O Campus Improvements

### Project Description

Louisa May Alcott Elementary School was built in 1961. Under Measure O, the project includes:

**Existing Buildings:** new interior and exterior painting, new ceiling tile and t-bar, new lighting, new HVAC, casework, and carpet, and restroom ADA upgrades.

**Site Work:** Removal of eleven (11) classroom portables, grading, new hard court play yard area, turf, ADA Upgrades, new landscape and irrigation throughout the campus, new gate, new fencing, and new domestic water, sewer, storm drain, and gas line for new building.

**New Classroom Building:** Six (6) general education classrooms and four (4) kindergarten classrooms with restrooms and new Kinder playground, play equipment and fencing.

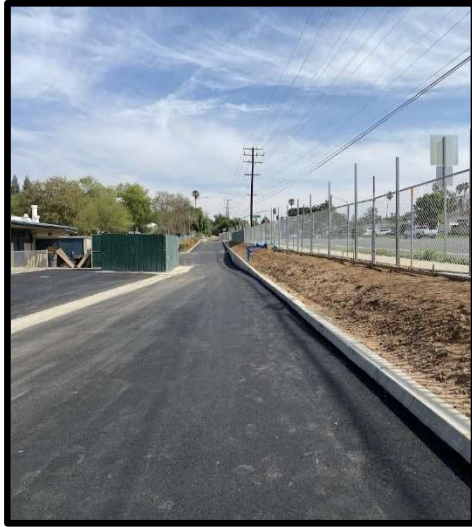
<b>Project Group:</b>	Group B
<b>Architect:</b>	DLR Architects
<b>DSA Submittal:</b>	April 2, 2019
<b>Construction:</b>	May 2021 to September 2022
<b>Project Budget:</b>	\$23,073,713
<b>Percentage Complete:</b>	70%

### Project Status

- ✓ Modernization - Buildings A, B, C, D, I & J - 100% Complete and turned over to the site (Pending some punch list repair items) - Buildings E & H - 70% Complete - Ongoing interior finish, ceiling, low voltage, door/frame & HVAC work
- ✓ New Construction - 2-Story Classroom Building K - 65% Complete - Ongoing interior finish work, exterior hardscape, low voltage & HVAC work - New kindergarten play area work will commence in May/June 2022
- ✓ Site work - Irrigation and landscaping - 60% Complete with pending punch list repair items - Remaining landscape and field restoration will commence in June/July 2022 - Fire lane asphalt repair work - 70% Complete (pending some punch list repair items) - Scheduled completion in March 2022
- ✓ Interim housing - Portable classroom safe-off and demolition work will commence in late June/July 2022

# Louisa May Alcott Elementary School

## Construction Progress Pictures



Fire Lane Repair Work



Building E & H Grading



Classroom 4, 5 & 6



Building D Boy's Restroom



Building D Restroom ADA Modernization



Building D Classroom



Building K Backside



# Louisa May Alcott Elementary School

## Construction Progress Pictures



Building K Stairway & Elevator



New 2-Story Building Landscape Work



Staff Restroom



Student Restroom



Classroom Building Work



Building E & H Modernization Work



# Louisa May Alcott Elementary School

## Exterior Rendering





# Louisa May Alcott Elementary School

## Existing Site Plan



# Louisa May Alcott Elementary School

## New Site Plan





# Monroe Elementary School

## Measure O Campus Improvements

### Project Description

Monroe Elementary School was built in 1955. Under Measure O, the project includes a new 1-story classroom building with 5 kinder classrooms, modernization of existing buildings including fire alarm, HVAC, plumbing, roof, door hardware, paint, new carpet, casework, ADA improvements, new school frontage, replacing kinder equipment, updates to irrigation and drainage systems and twenty-three (23) new restroom facilities. Site work includes new playground grass, new water, sewer, gas lines, new parking and bus drop-off and lunch shelter.

<b>Project Group:</b>	Group B
<b>Architect:</b>	HMC Architects
<b>DSA Submittal:</b>	September 24, 2019
<b>Bidding &amp; Award:</b>	February to May 2021
<b>Construction:</b>	June 2021 to August 2022
<b>Project Budget:</b>	\$23,006,854
<b>Percentage Complete:</b>	65%

### Project Status

- ✓ New kinder wing in the rough framing stages
- ✓ Lunch shelter is complete
- ✓ Building A complete and occupied
- ✓ Modernization ongoing in building B, including added restroom buildings

# Monroe Elementary School

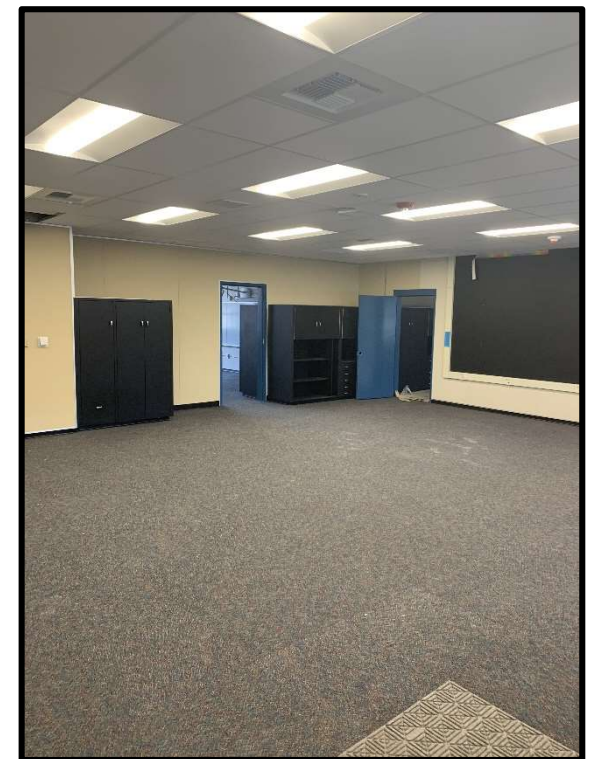
## Construction Progress Pictures



New Kinder



Lunch Shelter



Renovated Classroom

# Monroe Elementary School

## Project Rendering





# Monroe Elementary School

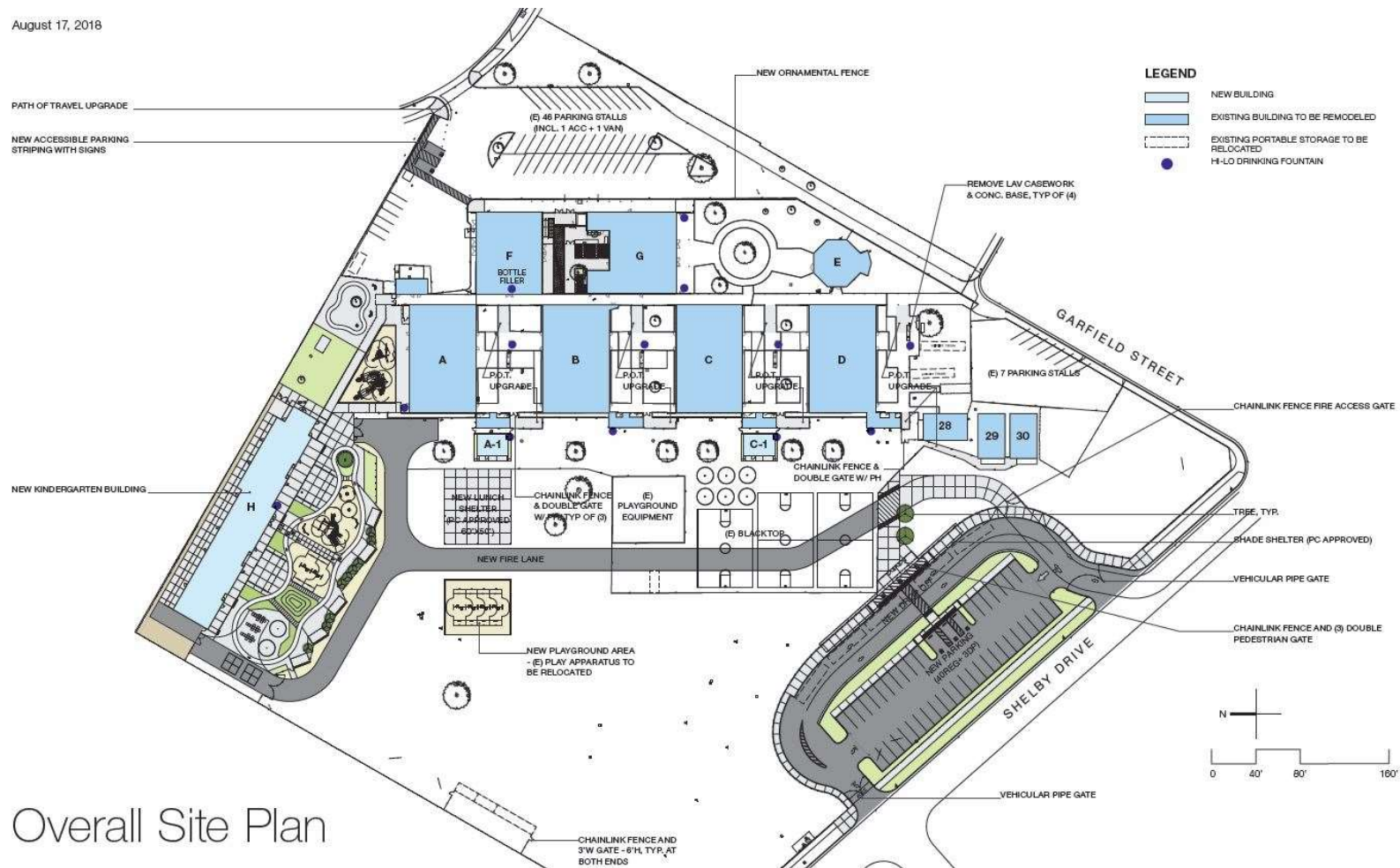
## Existing Site Plan



# Monroe Elementary School

## New Site Plan

August 17, 2018



# Fremont Elementary School

## Measure O Campus Improvements

### Project Description

Fremont Elementary School is one of the oldest schools in the District, built in 1917. Under Measure O, the project includes:

New Two-Story Building with six (6) general classrooms and six (6) kinder classrooms with interior restrooms, new play equipment and surfacing, landscape, elevator, covered walkway, exterior restrooms and storage.

Site Work includes removal of four portables and demo existing building J, new kinder play yard, hard court play yard area, turf, ADA Upgrades, new visitor parking lot with fifteen (15) regular and two (2) ADA accessible parking stalls, grading, re-stripe and slurry existing parking lot, and domestic water, sewer, storm drain, gas, electrical power upgrades. Existing Classroom Buildings and Administration updates include exterior improvements & roofing, reconfigure administration, interior and exterior paint.

<b>Project Group:</b>	Group C
<b>Architect:</b>	Ruhnau Clarke Architects
<b>DSA Status:</b>	<b>Approved</b> on June 28, 2019
<b>Construction:</b>	May 2021 to September 2022
<b>Project Budget:</b>	\$18,672,952
<b>Percentage Complete:</b>	55%

### Project Status

- ✓ Modernization - 20% Complete - Building M (administration) office modification work and the relocation of portables R, S, T & are scheduled for Summer 2022
- ✓ New Construction - Buildings K1 (2-Story classroom building) & K2 (Single-story classroom building) - 50% complete - ongoing steel and wood framing work - Exterior hardscape, play structure/area work and landscaping is scheduled in June/July 2022
- ✓ Site Work - Demo work on existing building J, playground, landscaping and portable classrooms #29 & #30 is 100% complete - Sewer & storm drain easement relocation work is 100% complete - soil import, back-fill work and storm-water retention basin work - 60% complete - ongoing grading work



# Fremont Elementary School

## Construction Progress Pictures



Building K1 & K2



Building K2 Classroom



Classroom



Restroom



Building K Classroom

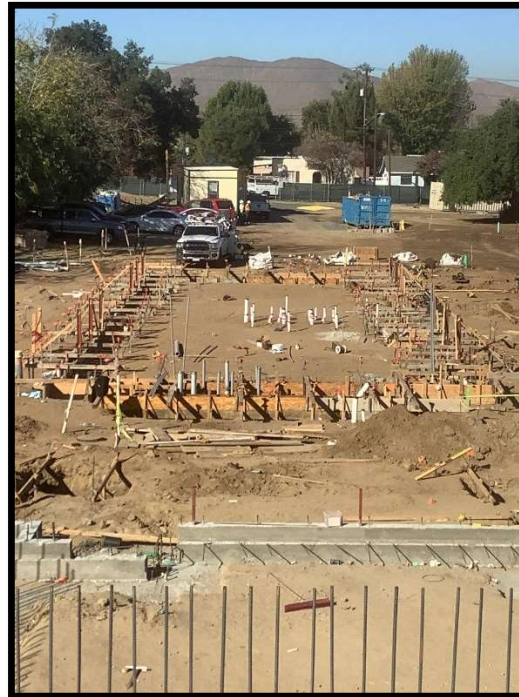


# Fremont Elementary School

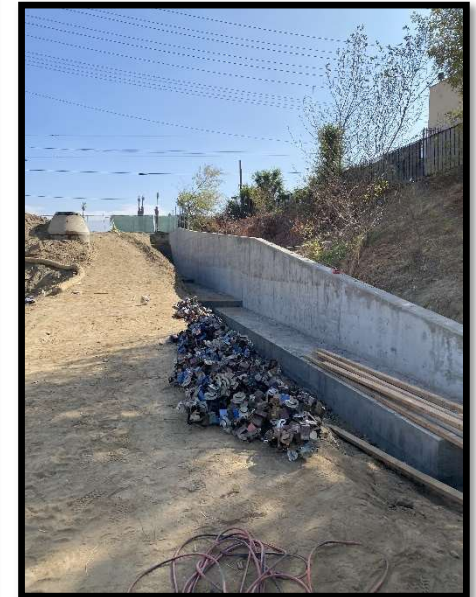
## Construction Progress Pictures



Building K1 & K2 Steel & Wood Framing



Building K2 Footing



Concrete Retaining Wall

# Fremont Elementary School

## Project Renderings





# Fremont Elementary School

## Existing Site Plan





# Fremont Elementary School

## New Site Plan



# Henry W. Longfellow Elementary School

## Measure O Campus Improvements

### Project Description

Henry W. Longfellow Elementary School was built in 1947. It faces logistical challenges due to its small footprint and no onsite parking. The site currently has 12 portable classroom buildings. The school is on 6 acres. Under Measure O, it will receive a new 6 kinder and 6 general education classroom building with new play area, new administration building and re-purposing of administration building, new parking lot, and modernization of existing buildings.

<b>Project Group:</b>	Group C
<b>Architect:</b>	DLR Architects
<b>DSA Status:</b>	<b>Approved</b>
<b>Bidding &amp; Award:</b>	Spring 2022
<b>Construction:</b>	June 2022 to August 2023
<b>Project Budget:</b>	\$24,295,610
<b>Percentage Complete:</b>	5%

### Project Status

- ✓ New Modulares were Board approved on 2/24/2022 to Silver Creek, Inc.
- ✓ Modernization bid is scheduled for Board approval on 4/7/2022
- ✓ Sheet Metal Category is currently bidding. Target Board approval date: 4/28/2022
- ✓ Community update meeting scheduled toward end of March 2022
- ✓ Construction start date June 2022



# Henry W. Longfellow Elementary School

## Building Rendering



Classroom Building



2-Story Building

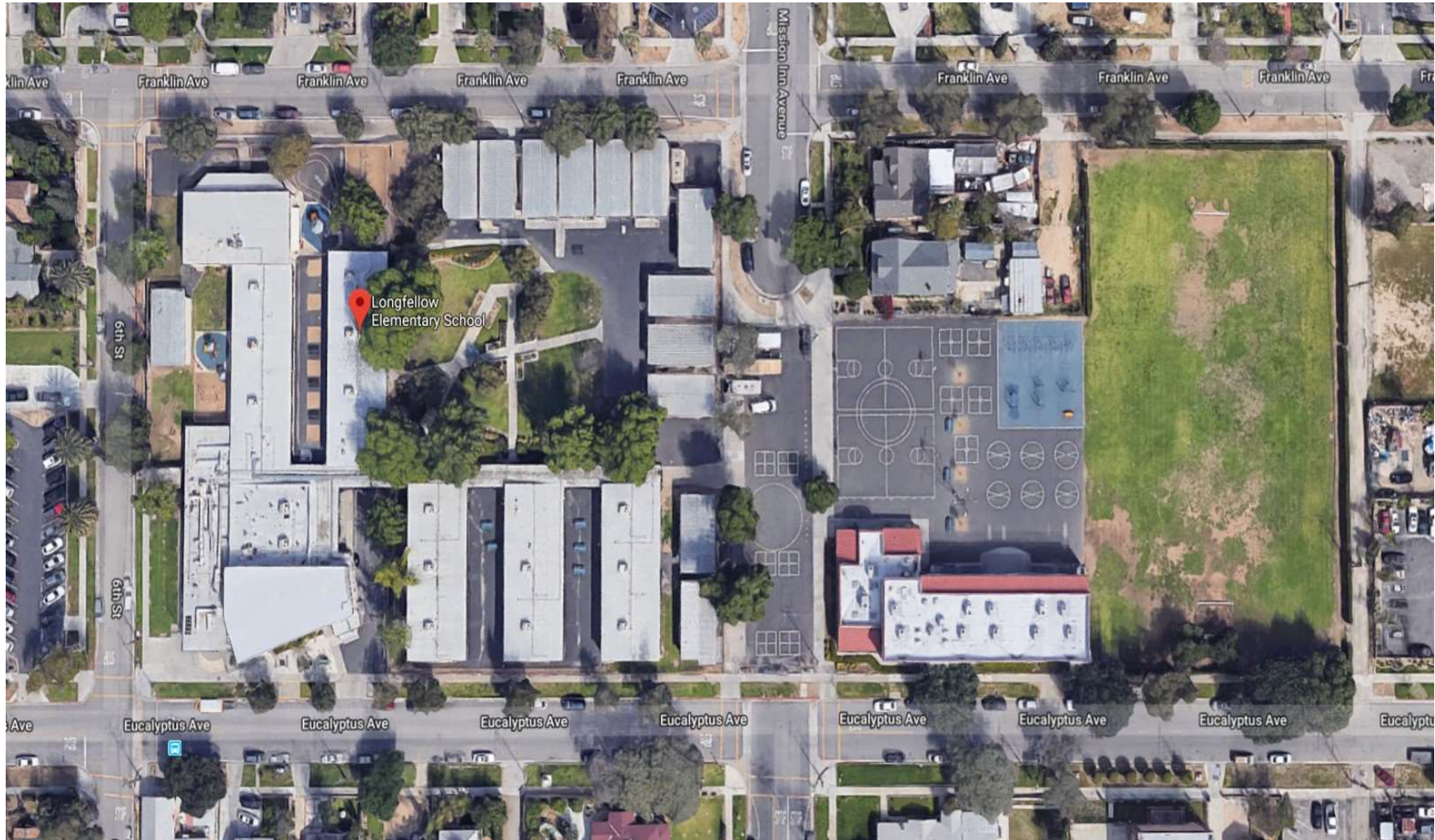


Corridors



# Henry W. Longfellow Elementary School

## Existing Site Plan



# Henry W. Longfellow Elementary School

## New Site Plan





# University Heights Middle School

## Measure O Campus Improvements

### Project Description

University Heights Middle School was built in 1979. Under Measure O, project includes seven (7) new classrooms added to existing structure, expansion of the music room, new finishes and relocation of existing library, ADA upgrades, new concrete running track, fire lane extension, landscaping and security fencing.

<b>Project Group:</b>	Group C
<b>Architect:</b>	GO Architects
<b>DSA Status:</b>	<b>Approved</b> on September 17, 2019
<b>Bidding &amp; Award:</b>	Spring 2022
<b>Construction:</b>	June 2022 to August 2023
<b>Project Budget:</b>	\$9,525,884
<b>Percentage Complete:</b>	5%

### Project Status

- ✓ This project bid on February 10, 2022
- ✓ Next step is Board approval
- ✓ Project is expected to start in the beginning of June

# University Heights Middle School

## Project Rendering





# University Heights Middle School

## Existing Site Plan





# University Heights Middle School

## New Site Plan



**Paint & Flooring:**  
Exterior & interior paint at Buildings A & B  
New flooring & wall base at Building A Halls  
No work at Gymnasium & Lockers

**Portable Removal:**  
Three portables removed & site restored

**Portable, Light Modernization:**  
Sixteen portable classrooms & one portable restroom building to have exteriors painted

**Light Modernization:**  
Eight Classrooms; new finishes & skylights  
Reconfigure Lobby & Reception at Admin  
MPR; new finishes & skylights, A/V System

**Renovation / Reconfiguration:**  
Convert two Classrooms in B to new Library  
Convert old Library in A to three new Classrooms & Circulation

**Addition / New Classroom Construction:**  
Add four new infill Classrooms & Circulation  
Expansion of Music Classroom & Support

**Maintenance & Operations:**  
Fire Alarm System replacement Campus wide  
Replace Landscaping & Irrigation at Campus front  
Replace and of life HVAC units, fire units total  
Replace MPR Audio / Visual System

**Site Improvements:**  
Fire Lane restored & widened  
Site Accessibility (ADA), new paving & parking repair  
Treat storm-water runoff  
New Fencing at West property line



# John W. North High School

## Measure O Campus Improvements

### Project Description

John W. North High School was built in 1966. This Project is currently in the planning phase. The Design Team was tasked to develop the scope of work during the 2020/21 school year. The scope of work under Measure O may include: replacement of portable buildings to permanent buildings, site enhancements, infrastructure upgrades, curb appeal, modernization, and site improvements.

<b>Project Group:</b>	Group E
<b>Architect:</b>	GO Architects
<b>DSA Submittal:</b>	To Be Determined
<b>Bidding &amp; Award:</b>	To Be Determined
<b>Project Budget:</b>	\$61.5 Million (Includes \$11.5 Million in ESSER funding)

### Project Status

#### Measure O Funded Project:

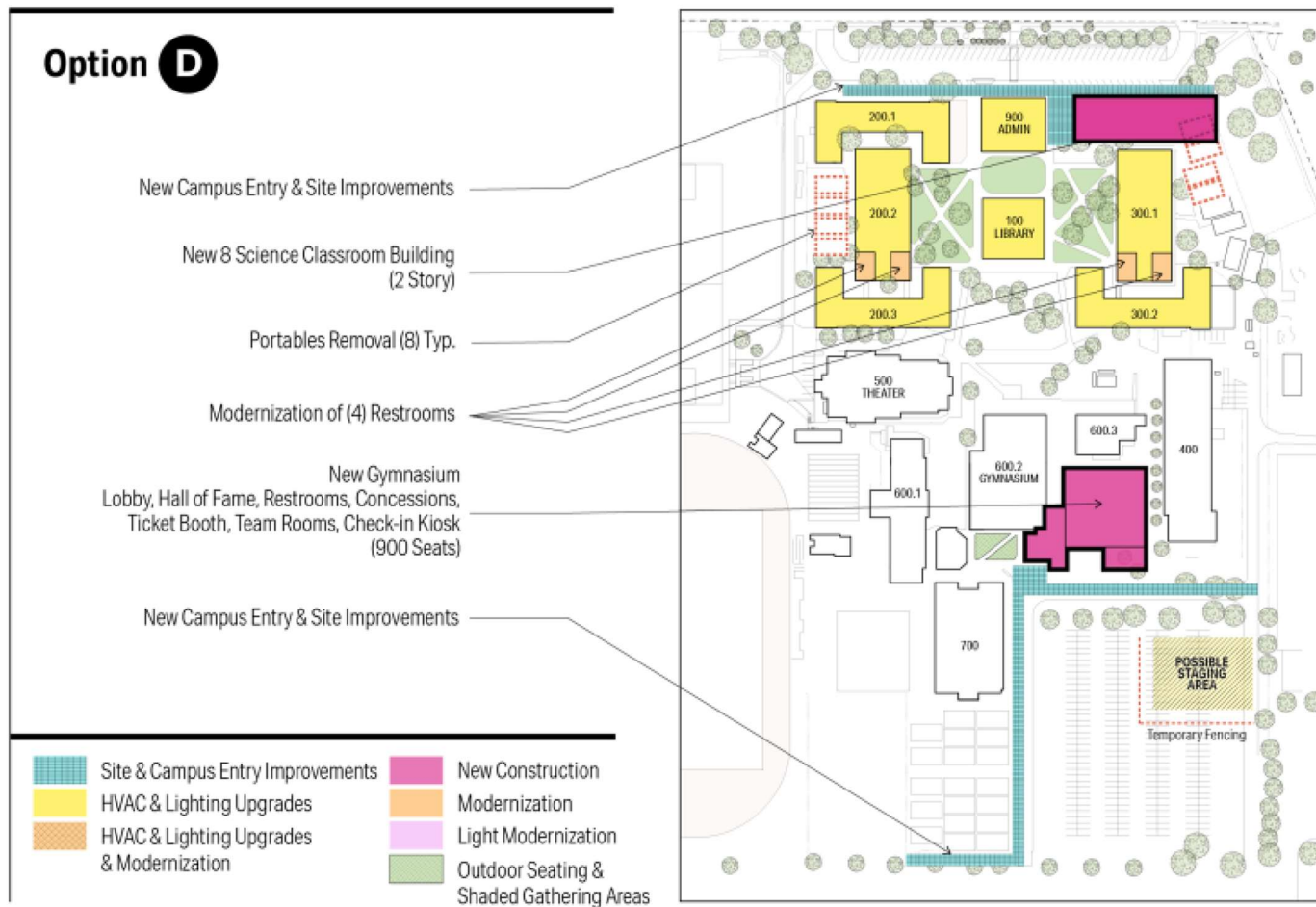
- ✓ Project budget was increased and approved by the Board of Education (BOE) from \$26M to \$61.5M on 10/7/21
- ✓ GO Architects presented various project design options to the BOE on 2/3/22 and Option D was selected

#### ESSER Funded Project:

- ✓ Various team meetings were held with the District's Maintenance & Operations (M & O) team
- ✓ 50% construction drawings are being reviewed by RUSD M & O team
- ✓ Construction Manager (CM), Tilden-Coil, laser scanning is complete
- ✓ RUSD - hazmat survey & specification is complete
- ✓ DSA submittal March 2022

# John W. North High School

## Option D



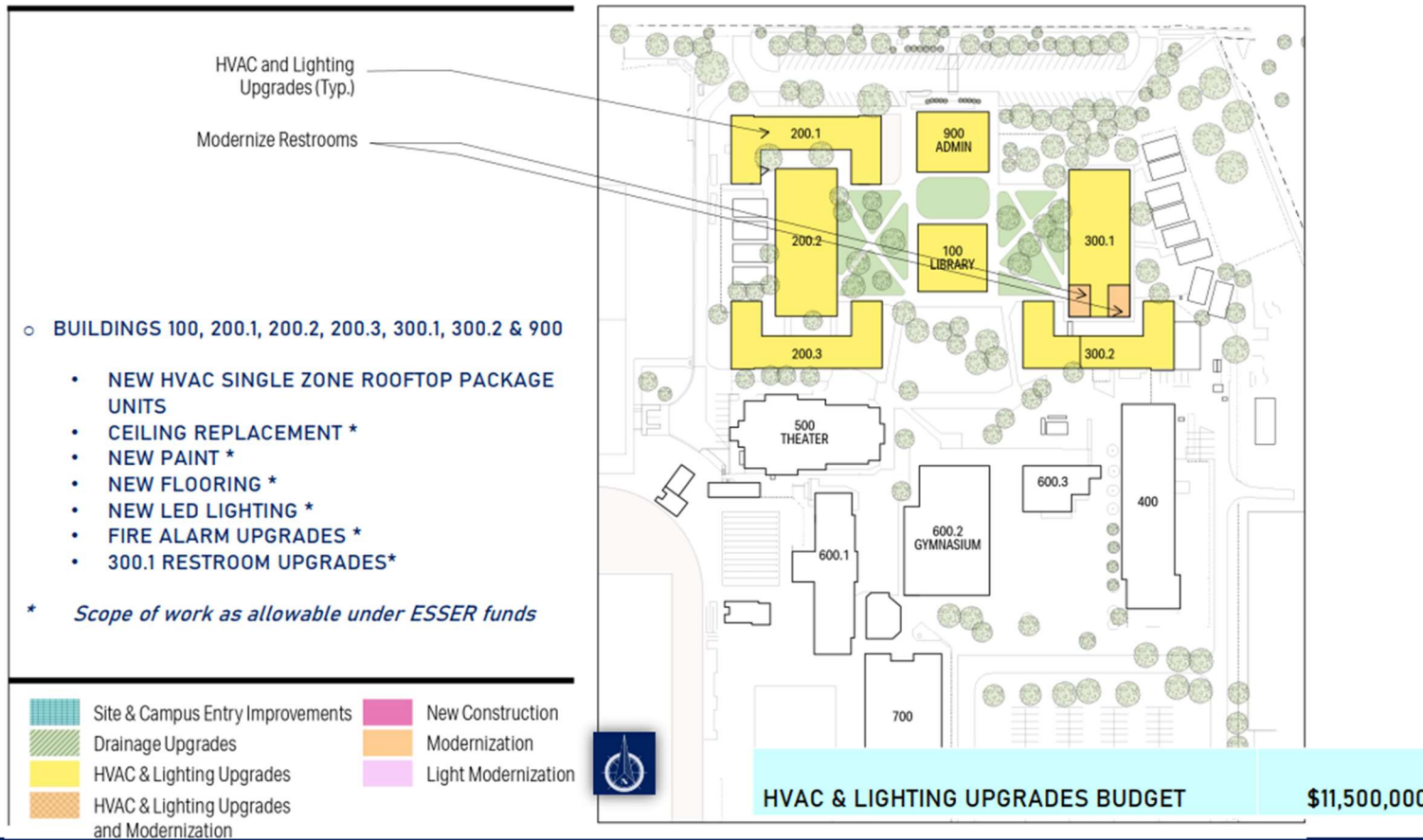
14





# John W. North High School

## HVAC & Lighting Upgrades



# John W. North High School

## Existing Site Plan





# Casa Blanca Neighborhood School

## Measure O Campus Improvements

### Project Description

The proposed site is approximately 9.8 acres located on Lincoln Street. The school will service approximately 750 TK-6 students in the Casa Blanca neighborhood. The new school will include ancillary/support buildings, outdoor learning /shared spaces, TK/K classrooms and play areas, 1-3 classrooms and play areas, special education, 4-6 play classrooms and play areas, staff/visitor parking, and bus/parent drop off areas.

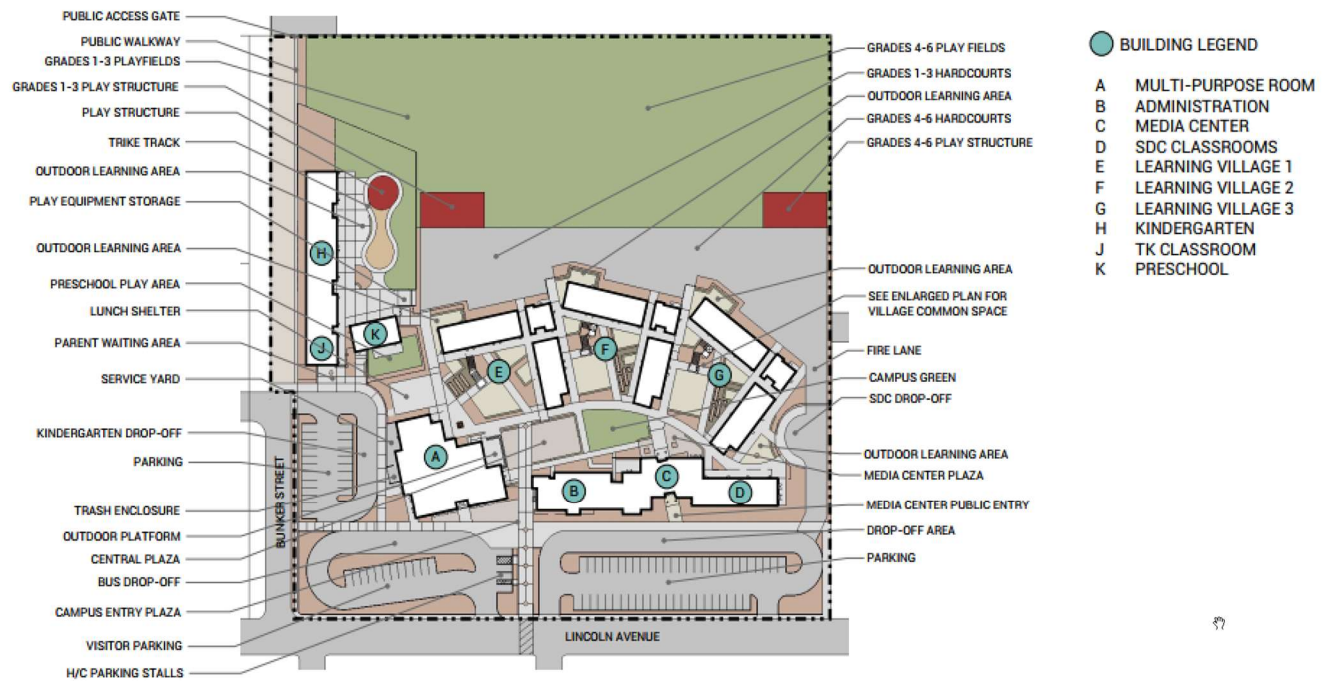
<b>Group:</b>	<b>Expanded</b>
<b>Architect:</b>	GO Architects
<b>DSA Submittal:</b>	To be Determined
<b>Bidding &amp; Award:</b>	To be Determined
<b>Project Budget:</b>	\$53Million + Plus Site Acquisition

### Project Status

- ✓ The project budget was increased and approved by the Board of Education on 10/7/21 from \$37.5M to \$53M plus site acquisition costs
- ✓ Schematic Design is under review
- ✓ Next step of design will be design development
- ✓ Educational specifications - ongoing meetings with the various stakeholders - Next meeting in March 2022
- ✓ City of Riverside - AOR/CM coordination on required utilities - Next meeting in March 2022
- ✓ Next Vision Design Committee (VDC) Meeting – March/April 2022

# Casa Blanca Neighborhood School

## Proposed Site Plan





# Casa Blanca Neighborhood School

## Conceptual Design Plan



# Eastside Neighborhood School

## Measure O Campus Improvements

### Project Description

The District is exploring various properties within the Eastside neighborhood for a future elementary school. Three options are being considered under CEQA:

- Option 1: Lincoln school + B Lots, + C Lots, vacate Park Avenue
- Option 2: B Lots, C Lots, Vacation of Park Avenue, Lincoln Park Joint use
- Option 3: B Lots, C Lots, Vacate Park Avenue, Reconfigure Lincoln

<b>Group:</b>	<b>Expanded</b>
<b>Architect:</b>	PBK Architects
<b>DSA Submittal:</b>	To be Determined
<b>Bidding &amp; Award:</b>	To be Determined
<b>Project Budget:</b>	\$62 Million + Plus Site Acquisition

### Project Status

- ✓ CEQA process is underway
- ✓ Scoping meeting was held on May 19, 2021
- ✓ Acquired 12 properties
- ✓ Environmental Impact Report (EIR) being prepared
- ✓ Due diligence phase

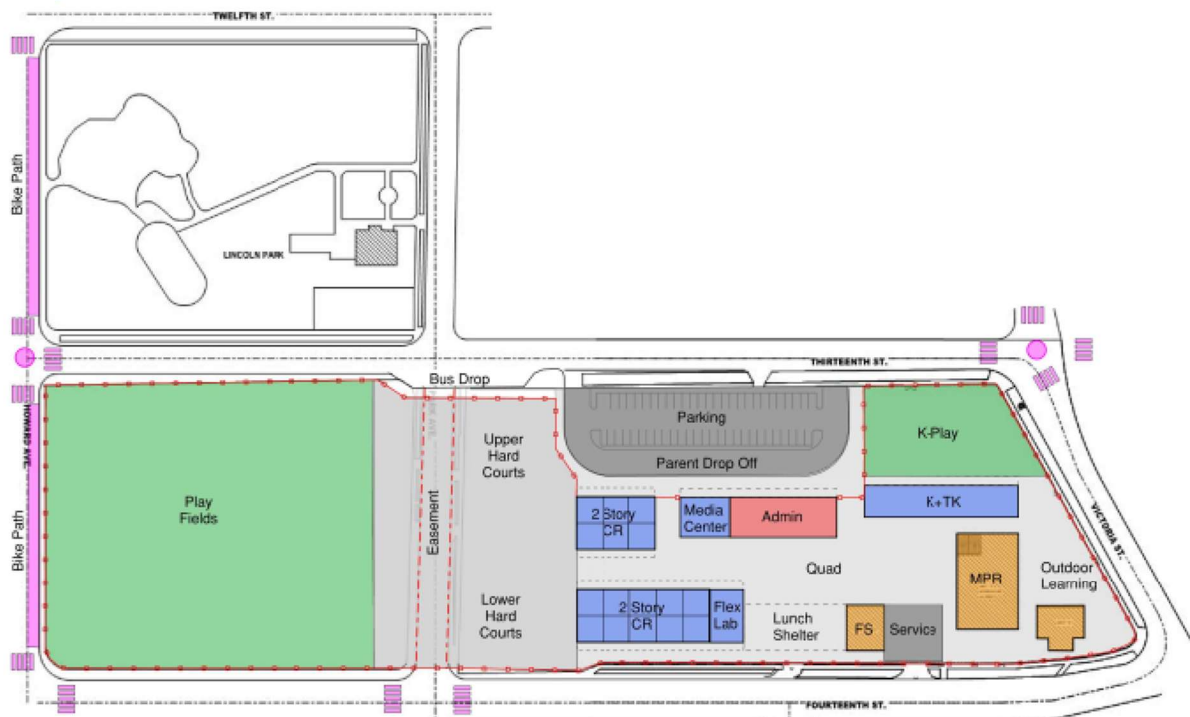


# Eastside Neighborhood School

Option 1 – Relocate Lincoln HS Off-Site, Capture Park Avenue

## Option 1

B Lots + C Lots, Relocate Lincoln HS off-site,  
Capture Park Avenue



**EASTSIDE ELEMENTARY SCHOOL**  
RIVERSIDE UNIFIED SCHOOL DISTRICT

12/14/2021

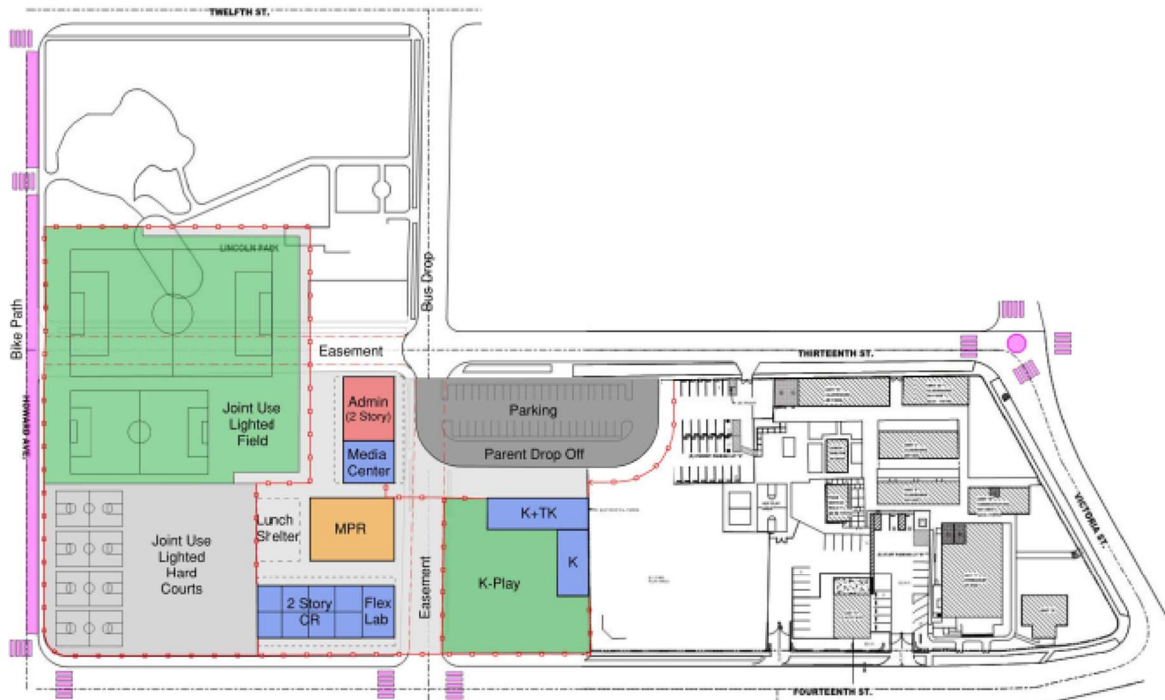


# Eastside Neighborhood School

Option 2 –B Lots, + C Lots, Vacation of Park Ave., Lincoln Park Join Use

## Option 2

B Lots + C Lots, Relocate Lincoln Pre-School,  
Capture Park Avenue, Capture 13th Street



**EASTSIDE ELEMENTARY SCHOOL**  
RIVERSIDE UNIFIED SCHOOL DISTRICT

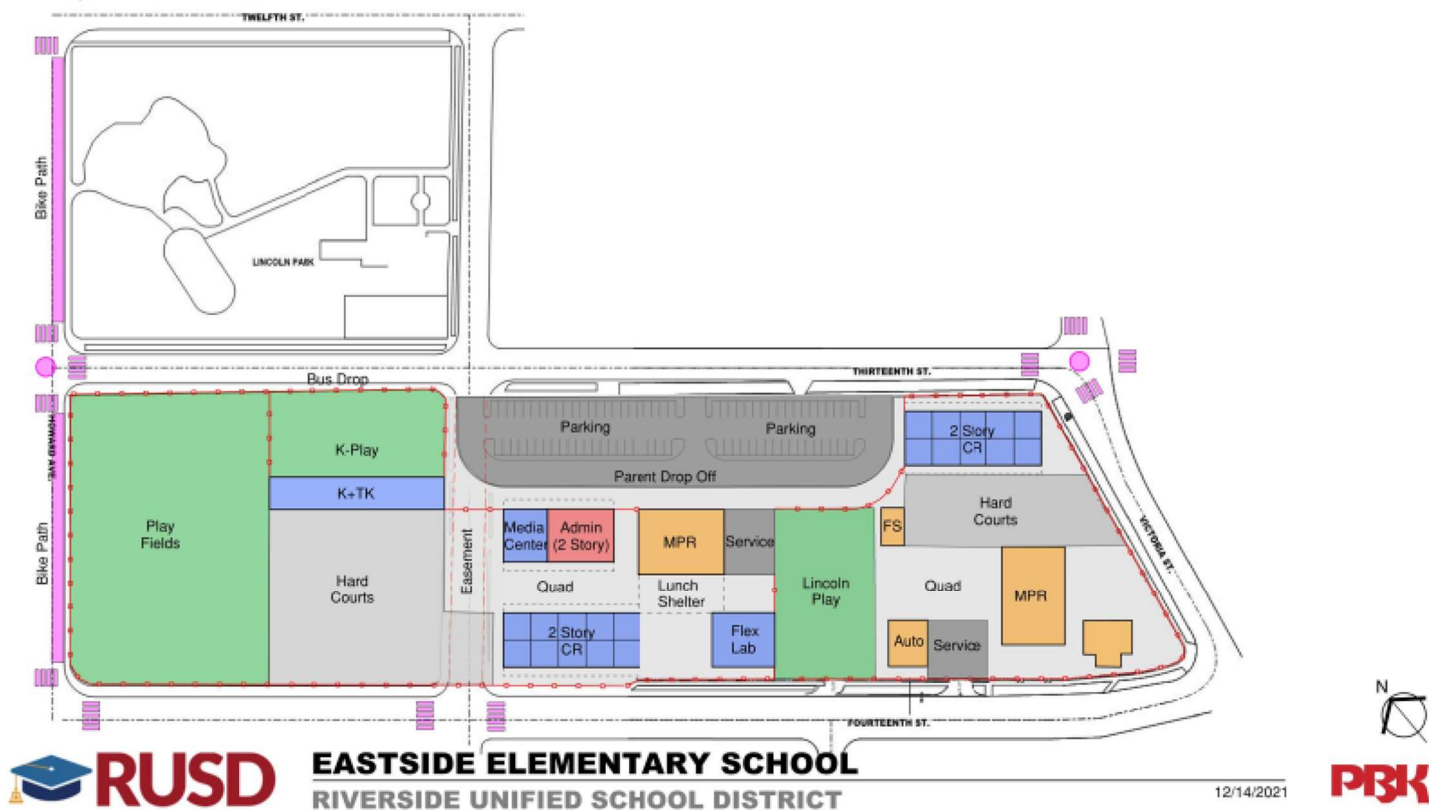
12/14/2021



# Eastside Neighborhood School

Option 3 – B Lots, + C Lots, Vacate of Park Ave., Reconfigure Lincoln

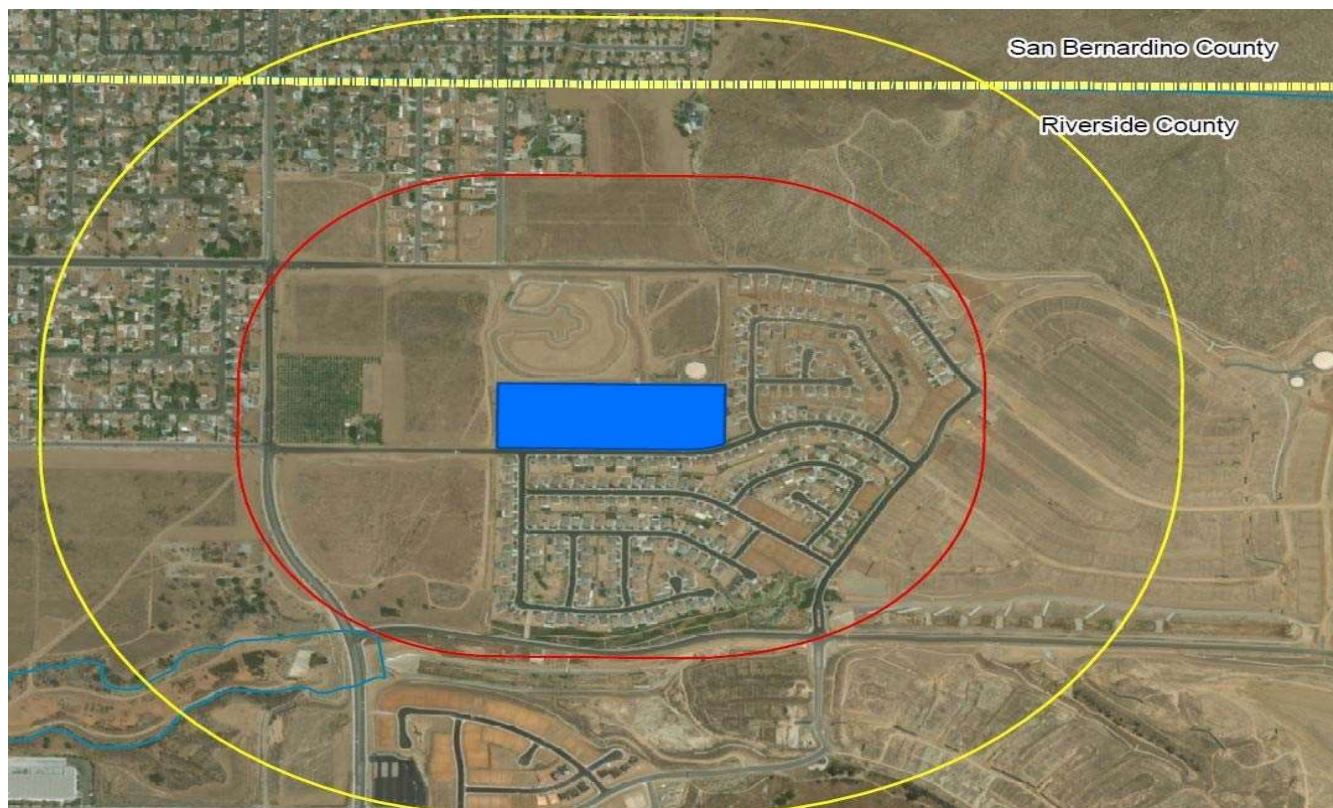
Option 3  
B Lots + C Lots, Relocate Lincoln Pre-School,  
Capture Park Avenue





# Highgrove II Neighborhood School

## Measure O Campus Improvements



## Project Description

The site is 13 acres and is located in Spring Mt. Ranch development area. The location of the site is in the northwestern corner of the Silverspot Road and Spring Street intersection.

<b>Group:</b>	<b>Expanded</b>
<b>Architect:</b>	Ruhnau Clarke Architects
<b>DSA Submittal:</b>	To Be Determined
<b>Bidding &amp; Award:</b>	To Be Determined
<b>Project Budget:</b>	\$1 Million Plus Total Encumbrances to Date

## Project Status

- ✓ The District is in the process of forming a Design/Communications Committee

# STEM Education Center

## Measure O Campus Improvements

### Project Description

A state of the art public STEM Education Center on the premises of a world class public research university, University of California, Riverside (UCR). This project is currently in the early stages of the CEQA process. The proposed high school will accommodate 800 students at any given time and will focus on computer science, environmental/agricultural science, biomedical/allied health, and engineering & advanced manufacturing.

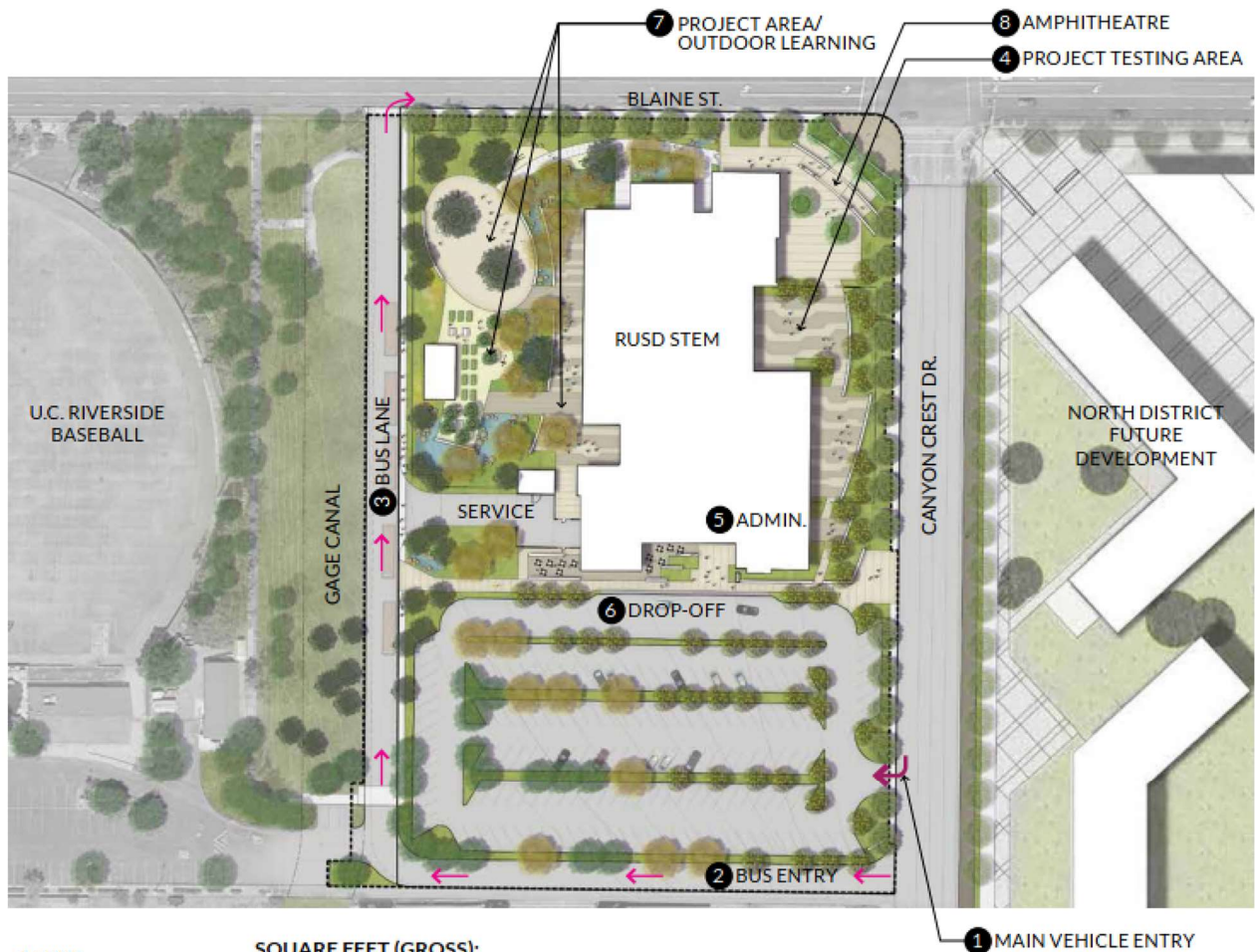
<b>Group:</b>	<b>Expanded</b>
<b>Architect:</b>	Ruhnau Clarke Architects
<b>DSA Submittal:</b>	<b>Pending</b>
<b>Project Budget:</b>	\$1 Million Plus Total Encumbrances to Date

### Project Status

- ✓ Environmental Impact Report (EIR) process has commenced
- ✓ Notice of Preparation (NOP) was published/noticed February 16, 2022
- ✓ NOP comment period ends March 18, 2022
- ✓ EIR Scoping Meeting held March 9, 2022 at the Grant Education Center auditorium

# STEM Education Center

## Ariel Site Plan



**ACRES:**  
5.93 ACRES

**SQUARE FEET (GROSS):**  
74,875 SF  
356 SF (OUTDOOR)  
**TOTAL SF: 75,231**



## Potential State Grants for Groups A, B & C Projects

The Riverside Unified School District will make every effort to augment its Measure O G.O. Bonds with future State eligible grants. Set forth below are estimated State new construction and modernization grant funding amounts that the District may be eligible for under the State's School Facility Program ("SFP"). The State passed a State School Bond Measure in November of 2016. However, the receipt of potential State grants is predicated on: 1) the Governor agreeing to issue State School Bonds, 2) the District meeting the State's eligibility requirements, and 3) the State funding levels remaining at current levels.

No.	School Project Name	Potential Estimated State Grants *
1	Harrison Elementary School - Modernization & New Construction Grants	\$3,292,748.00
2	Highgrove Elementary School - Modernization Grants	7,338,463.00
3	Jefferson Elementary School - Modernization Grants	2,919,697.00
4	Madison Elementary School - Modernization Grants	2,951,579.00
5	Sierra Middle School - Modernization Grants	140,375.00
6	Louisa May Alcott Elementary School - Modernization Grants	4,992,754.00
7	Andrew Jackson Elementary School - Modernization Grants	4,090,530.00
8	Monroe Elementary School - Modernization Grants	2,417,132.00
9	Sunshine Early Childhood Center - Modernization Grants	1,224,606.00
10	Riverside Polytechnic High School - Modernization Grants	4,947,273.00
11	Arlington High School - Modernization Grants	1,102,289.00
12	John Adams Elementary School - Modernization Grants	2,880,515.00
13	Fremont Elementary School - Modernization Grants	5,108,915.00
14	Henry W. Longfellow Elementary School - Modernization Grants	5,319,342.00
15	Magnolia Elementary School - Modernization Grants	3,626,244.00
16	University Middle School - Modernization Grants	2,185,090.00
COMBINED TOTAL:		\$54,537,552.00

## School Funding Program Glossary of Acronyms

**General Obligation Bonds (G.O. Bonds) – Fund 21:** Measure 0 is a voter approved bond measure within the boundaries of the District. It represents a maximum tax of \$60 per \$100,000 of assessed property value.

**Community Facilities District Bonds (CFDs):** The Mello-Roos Community Facilities Act provides an alternative method for public agencies to fund facilities. The Community Facilities District ("CFD") is a financing entity through which a local government is authorized to levy special property taxes to pay debt service on bonds or to pay for the direct construction of facilities. CFD revenue is restricted to the funding of additional capacity (e.g. New Construction).

**Developer Fees – Fund 25:** School districts have the ability to impose impact fees from new residential development and commercial/industrial development for the construction or reconstruction of school facilities. Developer fees are collected at the time a building permit is issued and are restricted to the funding of additional capacity (e.g. New Construction).

**Redevelopment Agency Revenue (RDA – Fund 25):** California redevelopment law allows school districts to share property tax increment income via pass-through agreements with local redevelopment agencies. State law eliminated redevelopment agencies as of February 1, 2012; however, local educational agency's pass-through entitlements remain. Redevelopment revenue is received annually and can be used to fund modernization and/or new construction projects.

**State School Facility Program Grants (SFP) - Fund 35:** The SFP provides grants for school districts to acquire school sites, construct new school facilities, or modernize existing school facilities. The two major funding types available are "new construction" and "modernization". The new construction grant provides funding on a 50/50 State and local match basis. The modernization grant provides funding on a 60/40 basis.

**California Clean Energy Jobs Act (Proposition 39):** Prop. 39 is an energy efficiency grant program that provides funding for eligible repairs to heating, ventilation, and air-conditioning (HVAC) systems; new chillers, boilers and furnaces; new lighting and lighting control systems; Installation of energy-efficient windows, programmable thermostats, and thermal window shades; and on-site clean energy generation, such as solar photovoltaic.

# **Measure O Cumulative Project Expenditures**

From  
**Inception to January 31, 2022**





## MEASURE O PROJECT COMMITMENTS AND EXPENDITURES

No.	District Project Name	MEASURE O CUMULATIVE COMMITMENTS	Measure O Expenditures Up to 9/24/2021 <sup>1</sup>	Expenditures From 9/25/2021 to 1/31/2022 <sup>2</sup>	MEASURE O CUMULATIVE EXPENDITURES	REMAINING MEASURE O COMMITMENTS	Current Project Phase
<b>GROUP A PROJECTS</b>							
1	Harrison Elementary School	\$7,945,375.95	(\$7,724,661.08)	(\$30,286.54)	(\$7,754,947.62)	\$190,428.33	Completed/April 2021
2	Highgrove Elementary School	18,536,898.69	(18,508,230.24)	(7,208.64)	(18,515,438.88)	21,459.81	Completed/August 2020
3	Jefferson Elementary School	16,634,318.11	(16,488,519.45)	(22,207.55)	(16,510,727.00)	123,591.11	Completed/April 2021
4	Madison Elementary School	17,395,239.80	(16,013,526.21)	(1,077,631.46)	(17,091,157.67)	304,082.13	Completed/May 2021
5	Sierra Middle School	<u>8,734,080.13</u>	<u>(8,734,080.13)</u>	<u>0.00</u>	<u>(8,734,080.13)</u>	<u>0.00</u>	Completed/November 2019
<b>GROUP A PROJECT TOTALS:</b>		<b>\$69,245,912.68</b>	<b>(\$67,469,017.11)</b>	<b>(\$1,137,334.19)</b>	<b>(\$68,606,351.30)</b>	<b>\$639,561.38</b>	
<b>GROUP B PROJECTS</b>							
6	Alcott Elementary School	\$11,414,674.95	(\$5,543,759.14)	(\$3,661,728.68)	(\$9,205,487.82)	\$2,209,187.13	Construction
7	Jackson Elementary School	19,427,578.08	(15,717,214.03)	(2,547,551.94)	(18,264,765.97)	1,162,812.11	Construction
8	Monroe Elementary School	21,125,011.79	(6,645,657.77)	(4,089,456.15)	(10,735,113.92)	10,389,897.87	Construction
9	Sunshine Early Childhood Center	5,047,014.95	(4,650,064.26)	(293,215.04)	(4,943,279.30)	103,735.65	Construction
10	Poly High School	<u>23,194,098.35</u>	<u>(21,558,159.11)</u>	<u>1,508,156.04</u>	<u>(20,050,003.07)</u>	<u>3,144,095.28</u>	Quad/Auxiliary Gym
<b>GROUP B PROJECT TOTALS:</b>		<b>\$80,208,378.12</b>	<b>(\$54,114,854.31)</b>	<b>(\$9,083,795.77)</b>	<b>(\$63,198,650.08)</b>	<b>\$17,009,728.04</b>	
<b>GROUP C PROJECTS</b>							
11	Adams Elementary School	\$10,741,601.77	(\$9,882,096.62)	(\$281,947.73)	(\$10,164,044.35)	\$577,557.42	Construction
12	Fremont Elementary School	8,614,497.55	(1,508,477.19)	(2,919,178.90)	(4,427,656.09)	4,186,841.46	Construction
13	Longfellow Elementary School	3,512,326.65	(2,229,765.45)	(334,543.92)	(2,564,309.37)	948,017.28	Planning
14	Magnolia Elementary School	11,303,228.47	(9,275,010.79)	(1,039,589.63)	(10,314,600.42)	988,628.05	Construction
15	University Middle School	813,251.89	(426,072.70)	(7,832.59)	(433,905.29)	379,346.60	Planning
16	Arlington High School	<u>25,712,626.63</u>	<u>(17,368,516.81)</u>	<u>(4,692,337.00)</u>	<u>(22,060,853.81)</u>	<u>3,651,772.82</u>	Construction
<b>GROUP C PROJECT TOTALS:</b>		<b>\$60,697,532.96</b>	<b>(\$40,689,939.56)</b>	<b>(\$9,275,429.77)</b>	<b>(\$49,965,369.33)</b>	<b>\$10,732,163.63</b>	

<sup>1</sup> Expenditures reflected in last CBOC Report dated October 13, 2021. Financial period ended on September 24, 2021.

<sup>2</sup> Expenditures related to Measure O from last report to January 31, 2022, the date of financial data for the March 15, 2022 CBOC Report.

## MEASURE O PROJECT COMMITMENTS AND EXPENDITURES

No.	District Project Name	MEASURE O CUMULATIVE COMMITMENTS	Measure O Expenditures Up to 9/24/2021 <sup>1</sup>	Expenditures From 9/25/2021 to 1/31/2022 <sup>2</sup>	MEASURE O CUMULATIVE EXPENDITURES	REMAINING MEASURE O COMMITMENTS	Current Project Phase
<b>Groups D, E, F, &amp; H and Expanded Projects</b>							
17	Bryant Elementary School	\$161.01	(\$161.01)	\$0.00	(\$161.01)	\$0.00	Planning
18	Highgrove II Neighborhood School	4,251,117.89	(4,015,974.14)	0.00	(4,015,974.14)	235,143.75	Planning
19	Franklin Elementary School	47,103.04	(47,103.04)	0.00	(47,103.04)	0.00	Planning
20	King High School	891,610.79	(891,610.79)	0.00	(891,610.79)	0.00	Planning
21	Mt. View Elementary School	13,302.50	(13,302.50)	0.00	(13,302.50)	0.00	Planning
22	North High School	397,812.50	(185,031.25)	(210,093.97)	(395,125.22)	2,687.28	Planning
23	Pachappa Elementary School	11,450.00	(11,450.00)	0.00	(11,450.00)	0.00	Planning
24	Taft Elementary School	31,893.06	(31,893.06)	0.00	(31,893.06)	0.00	Planning
25	Washington Elementary School	23,939.85	(23,939.85)	0.00	(23,939.85)	0.00	Planning
26	Woodcrest Elementary School	20,170.63	(20,170.63)	0.00	(20,170.63)	0.00	Planning
27	Earhart Middle School	12,350.00	(12,350.00)	0.00	(12,350.00)	0.00	Planning
28	Ramona High School	21,250.00	(21,250.00)	0.00	(21,250.00)	0.00	Planning
29	New STEM High School @ UCR	1,648,438.78	(819,711.26)	(16,763.25)	(836,474.51)	811,964.27	Planning
30	Casa Blanca Neighborhood School	8,472,792.80	(8,325,166.32)	(125,625.98)	(8,450,792.30)	22,000.50	Planning
31	Eastside Neighborhood School	3,276,809.49	(2,783,161.18)	(134,767.65)	(2,917,928.83)	358,880.66	Planning
32	STEM Academy	9,952.47	(9,952.47)	0.00	(9,952.47)	0.00	Planning
33	Facilities Projects	<u>3,301,569.21</u>	<u>(2,711,745.10)</u>	<u>(352,764.70)</u>	<u>(3,064,509.80)</u>	<u>237,059.41</u>	Planning
<b>GROUPS D, E, F, &amp; H AND EXPANDED PROJECTS:</b>		<b>\$22,431,724.02</b>	<b>(\$19,923,972.60)</b>	<b>(\$840,015.55)</b>	<b>(\$20,763,988.15)</b>	<b>\$1,667,735.87</b>	
<b>MEASURE O COMMITMENTS &amp; EXPENDITURES:</b>		<b><u>\$232,583,547.78</u></b>	<b><u>(\$182,197,783.58)</u></b>	<b><u>(\$20,336,575.28)</u></b>	<b><u>(\$202,534,358.86)</u></b>	<b><u>\$30,049,188.92</u></b>	

<sup>1</sup> Expenditures reflected in last CBOC Report dated October 13, 2021. Financial period ended on September 24, 2021.

<sup>2</sup> Expenditures related to Measure O from last report to January 31, 2022, the date of financial data for the March 15, 2022 CBOC Report.

# Measure O Detailed Expenditure Backup

from *Keystone Solutions*  
July 1, 2021 to January 31, 2022





## MEASURE O 2020/2021 ENCUMBRANCES & EXPENDITURES

### Project: 102-9772 - Adams Elementary School - New Construction

Vendor	Encumbrance	Expenditure	Balance	Description
Fusion Sign And Design, Inc.	\$205.00	\$0.00	\$205.00	Signage Costs
Golden West Moving Systems, Inc.	\$3,890.50	(\$3,890.50)	\$0.00	Moving Costs
<b>Project Total:</b>	<b>\$4,095.50</b>	<b>(\$3,890.50)</b>	<b>\$205.00</b>	<b>102-9772 - Adams Elementary School - New Construction</b>

### Project: 102-9776 - Adams Elementary School - Modernization

Vendor	Encumbrance	Expenditure	Balance	Description
Arrowhead Mechanical, Inc.	\$57,153.78	(\$3,633.75)	\$53,520.03	Construction Costs
Best Contracting Services	\$114,281.65	(\$96,760.35)	\$17,521.30	Construction Costs
Bithell Inc.	\$3,724.12	\$0.00	\$3,724.12	Construction Costs
California Department Of Ed	\$5,256.73	(\$5,256.73)	\$0.00	Plan Check Fees
Cardinal Environmental Consultants, Inc.	\$3,670.00	(\$2,350.00)	\$1,320.00	Environmental Costs
Construction Electric Inc	\$94,126.87	(\$12,406.85)	\$81,720.02	Electrical Costs
Continental Marble and Tile Co.	\$13,241.45	(\$1,461.10)	\$11,780.35	Other Construction
Converse Consultants	\$2,238.50	(\$795.00)	\$1,443.50	Site Survey
Crew, Inc.	\$18,195.00	(\$18,108.00)	\$87.00	Construction Costs
Cuyamaca Const., Inc.	\$43,393.20	(\$5,787.40)	\$37,605.80	Construction
David M. Bertino Manufacturing, Inc	\$7,114.75	\$0.00	\$7,114.75	Other Construction
Defoe Furniture 4 Kids Inc	\$4,779.47	(\$4,779.47)	\$0.00	Furniture
Design West Engineering, Inc.	\$3,720.00	(\$3,720.00)	\$0.00	Engineering Services
Fischer Inc.	\$4,742.66	(\$1,019.35)	\$3,723.31	Construction Costs
Gafcon, Inc.	\$2,681.00	(\$1,971.00)	\$710.00	Labor Compliance
JPI Development Group, Inc.	\$37,157.01	(\$25,264.00)	\$11,893.01	Construction Costs
Kar Construction, Inc.	\$78,596.00	(\$22,536.00)	\$56,060.00	Construction Costs
LPA Architects	\$48,744.97	(\$48,744.97)	\$0.00	Architect Fees
RVH Constructors, Inc.	\$241,755.51	(\$91,322.64)	\$150,432.87	Construction Costs
Signature Flooring, Inc.	\$7,264.66	(\$3,056.15)	\$4,208.51	Flooring Construction
Smith System MFG. Co.	\$326.25	\$0.00	\$326.25	Furniture & Equipment
Southern California Landscaping, Inc.	\$130,773.87	(\$58,305.30)	\$72,468.57	Landscaping Costs
Southland Inspections, Inc.	\$16,740.00	(\$2,160.00)	\$14,580.00	Inspection Costs
Superior Wall Systems, Inc.	\$37,140.74	(\$18,601.95)	\$18,538.79	Construction
Technet Partners Inc.	\$34,602.49	(\$34,602.49)	\$0.00	Technology/Network
Tilden-Coil Constructors	\$53,731.54	(\$25,157.30)	\$28,574.24	Construction Management

## MEASURE O 2020/2021 ENCUMBRANCES & EXPENDITURES

### Project: 102-9776 - Adams Elementary School - Modernization

Vendor	Encumbrance	Expenditure	Balance	Description
Wolff/Lang/Christopher Architects, Incorporated	\$2,945.60	(\$2,945.60)	\$0.00	Architect Fees
<b>Project Total:</b>	<b>\$1,068,097.82</b>	<b>(\$490,745.40)</b>	<b>\$577,352.42</b>	<b>102-9776 - Adams Elementary School - Modernization</b>

### Project: 104-9772 - Alcott Elementary School - New Construction

Vendor	Encumbrance	Expenditure	Balance	Description
California Department Of Ed	\$3,185.23	(\$3,185.23)	\$0.00	Plan Check Fees
DLR Group, Inc.	\$35,971.75	(\$35,971.75)	\$0.00	Architect Fees
Tilden-Coil Constructors	\$855,390.00	(\$855,390.00)	\$0.00	Construction Management
<b>Project Total:</b>	<b>\$894,546.98</b>	<b>(\$894,546.98)</b>	<b>\$0.00</b>	<b>104-9772 - Alcott Elementary School - New Construction</b>

### Project: 104-9776 - Alcott Elementary School - Modernization

Vendor	Encumbrance	Expenditure	Balance	Description
Amtek Construction	\$908,297.31	(\$908,297.31)	\$0.00	Construction Contractor
California Department Of Ed	\$4,192.08	(\$4,192.08)	\$0.00	Plan Check Fees
Cardinal Environmental Consultants, Inc.	\$25,000.00	(\$8,824.00)	\$16,176.00	Environmental Costs
DLR Group, Inc.	\$26,228.94	(\$26,228.94)	\$0.00	Architect Fees
David M. Bertino Manufacturing, Inc	\$426,014.95	(\$330,807.10)	\$95,207.85	Other Construction
Design West Engineering, Inc.	\$5,700.00	(\$5,700.00)	\$0.00	Engineering Services
Empyrean Plumbing, Inc.	\$526,925.36	(\$526,925.36)	\$0.00	Construction Costs
Gafcon, Inc.	\$22,202.50	(\$4,593.50)	\$17,609.00	Labor Compliance
Golden West Moving Systems, Inc.	\$35,464.00	(\$18,609.00)	\$16,855.00	Moving Costs
Hamel Contracting, Inc.	\$551,531.32	(\$551,531.32)	\$0.00	Construction Costs
Inland Empire Landscape, Inc.	\$626,144.86	(\$220,181.06)	\$405,963.80	Construction
Lee & Stires, Inc.	\$34,936.63	(\$34,936.63)	\$0.00	Construction Costs
Mike's Custom Flooring, Inc	\$246,290.35	(\$68,354.88)	\$177,935.47	Flooring Costs
Placeworks	\$8,133.47	(\$4,753.20)	\$3,380.27	Environmental/CEQA
R M A Group	\$83,566.29	(\$83,566.29)	\$0.00	Site Survey
RAN Enterprises Inc	\$404,287.00	(\$404,287.00)	\$0.00	Construction Costs
Rite-Way Roof Corporation	\$193,191.45	(\$105,215.39)	\$87,976.06	Roofing Costs
Rivco Coatings Inc	\$230,000.00	(\$84,900.79)	\$145,099.21	Construction Contractor
Siemens Industry, Inc.	\$49,690.00	(\$49,690.00)	\$0.00	Construction Costs
Silver Creek Industries, Inc.	\$2,045,502.95	(\$853,432.03)	\$1,192,070.92	Construction Costs
Southcoast Acoustical Interiors, Inc	\$118,437.55	(\$67,524.00)	\$50,913.55	Construction Costs

## MEASURE O 2020/2021 ENCUMBRANCES & EXPENDITURES

### Project: 104-9776 - Alcott Elementary School - Modernization

Vendor	Encumbrance	Expenditure	Balance	Description
Southland Inspections, Inc.	\$68,970.00	(\$68,970.00)	\$0.00	Inspection Costs
Spec Construction Co., Inc.	\$573,108.87	(\$573,108.87)	\$0.00	Construction Contractor
<b>Project Total:</b>	<b>\$7,213,815.88</b>	<b>(\$5,004,628.75)</b>	<b>\$2,209,187.13</b>	<b>104-9776 - Alcott Elementary School - Modernization</b>

### Project: 105-9772 - Highgrove II Neighborhood School - New Construction

Vendor	Encumbrance	Expenditure	Balance	Description
Atkinson, Andelson, Loya, Ruud &	\$10,000.00	\$0.00	\$10,000.00	Legal Costs
Oxbridge Development Inc.	\$2,018.75	\$0.00	\$2,018.75	Realtor
Ruhnau Clarke Architects	\$223,125.00	\$0.00	\$223,125.00	Architect Fees
<b>Project Total:</b>	<b>\$235,143.75</b>	<b>\$0.00</b>	<b>\$235,143.75</b>	<b>105-9772 - Highgrove II Neighborhood School - New Construction</b>

### Project: 114-9772 - Fremont Elementary School - New Construction

Vendor	Encumbrance	Expenditure	Balance	Description
California Department Of Ed	\$1,499.80	(\$1,499.80)	\$0.00	Plan Check Fees
Ruhnau Clarke Architects	\$26,373.47	(\$26,373.47)	\$0.00	Architect Fees
<b>Project Total:</b>	<b>\$27,873.27</b>	<b>(\$27,873.27)</b>	<b>\$0.00</b>	<b>114-9772 - Fremont Elementary School - New Construction</b>

### Project: 114-9776 - Fremont Elementary School - Modernization

Vendor	Encumbrance	Expenditure	Balance	Description
AWI Builders, Inc	\$489,911.00	(\$329,477.10)	\$160,433.90	Construction Contractor
Bastion Security Inc	\$3,986.40	(\$3,986.40)	\$0.00	Security Costs
Bell Roofing Company	\$411,514.75	(\$92,734.25)	\$318,780.50	Construction Costs
Bogh Engineering Inc.	\$137,542.50	(\$137,542.50)	\$0.00	Construction Costs
CLM Professional Services, Inc.	\$9,000.00	(\$2,250.00)	\$6,750.00	Survey
California Department Of Ed	\$6,997.64	(\$6,997.64)	\$0.00	Plan Check Fees
Cardinal Environmental Consultants, Inc.	\$15,250.00	(\$15,234.00)	\$16.00	Environmental Costs
Caston, Inc.	\$5,225.00	(\$5,225.00)	\$0.00	Construction Costs
Design West Engineering, Inc.	\$1,290.00	(\$1,290.00)	\$0.00	Engineering Services
ECAM Secure	\$74,773.20	\$0.00	\$74,773.20	Security
F.E.C. Electric	\$1,469,874.00	(\$293,196.83)	\$1,176,677.17	Construction Costs
Gafcon, Inc.	\$30,816.50	(\$5,000.00)	\$25,816.50	Labor Compliance
Glore & Associates, Inc.	\$201,800.00	(\$7,827.05)	\$193,972.95	Hardware Supplier
Golden West Moving Systems, Inc.	\$18,815.00	(\$5,272.00)	\$13,543.00	Moving Costs



## MEASURE O 2020/2021 ENCUMBRANCES & EXPENDITURES

### Project: 114-9776 - Fremont Elementary School - Modernization

Vendor	Encumbrance	Expenditure	Balance	Description
Inland Pacific Tile, Inc.	\$96,592.10	\$0.00	\$96,592.10	Construction Costs
JPI Development Group, Inc.	\$470,698.36	(\$470,698.36)	\$0.00	Construction Costs
Marina Landscape, Inc.	\$706,687.62	(\$49,478.39)	\$657,209.23	Construction Costs
PGC Construction, Inc.	\$11,125.45	(\$11,125.45)	\$0.00	Construction Contractor
Prospectra Contract Flooring	\$182,670.00	\$0.00	\$182,670.00	Flooring Costs
Queen City Glass Co.	\$173,756.65	(\$3,841.80)	\$169,914.85	Construction Costs
Ruhnau Clarke Architects	\$63,040.68	(\$63,040.68)	\$0.00	Architect Fees
Sandy Pringle Associates, Inc.	\$259,160.00	(\$111,070.00)	\$148,090.00	Construction Inspection
Siemens Industry, Inc.	\$26,949.99	(\$26,949.99)	\$0.00	Construction Costs
Southcoast Acoustical Interiors, Inc.	\$60,173.25	\$0.00	\$60,173.25	Construction Costs
Southern California News Group	\$5,204.00	\$0.00	\$5,204.00	Advertising
Spec Construction Co., Inc.	\$760,125.63	(\$760,125.63)	\$0.00	Construction Contractor
Stolo Cabinets, Inc.	\$147,845.00	(\$11,039.00)	\$136,806.00	Construction Costs
T3 Contractors Corp.	\$208,061.79	(\$74,315.45)	\$133,746.34	Construction Costs
TGR Geotechnical, Inc.	\$270,223.00	(\$148,972.43)	\$121,250.57	Geotechnical Costs
Tomahawk Builders, Inc.	\$696,194.40	(\$696,194.40)	\$0.00	Construction Contractor
Westland Mechanical	\$504,421.90	\$0.00	\$504,421.90	Construction Contractor
<b>Project Total:</b>	<b>\$7,519,725.81</b>	<b>(\$3,332,884.35)</b>	<b>\$4,186,841.46</b>	<b>114-9776 - Fremont Elementary School - Modernization</b>

### Project: 118-9772 - Harrison Elementary School - New Construction

Vendor	Encumbrance	Expenditure	Balance	Description
ATI Architects And Engineers	\$7,346.24	\$0.00	\$7,346.24	Architect Fees
<b>Project Total:</b>	<b>\$7,346.24</b>	<b>\$0.00</b>	<b>\$7,346.24</b>	<b>118-9772 - Harrison Elementary School - New Construction</b>

### Project: 118-9776 - Harrison Elementary School - Modernization

Vendor	Encumbrance	Expenditure	Balance	Description
ATI Architects And Engineers	\$183,082.09	\$0.00	\$183,082.09	Architect Fees
Alliant Consulting, Inc.	\$403.25	(\$403.25)	\$0.00	Labor Compliance
Department of General Services	\$2,107.49	(\$2,107.49)	\$0.00	Plan Check Fees
Design West Engineering, Inc.	\$6,447.00	(\$6,447.00)	\$0.00	Engineering Services
Golden West Moving Systems, Inc.	\$4,240.00	(\$4,240.00)	\$0.00	Moving Costs
Leighton Consulting, Inc.	\$11,588.85	(\$11,588.85)	\$0.00	Site Survey
Marina Landscape, Inc.	\$7,607.44	(\$7,607.44)	\$0.00	Construction Costs

## MEASURE O 2020/2021 ENCUMBRANCES & EXPENDITURES

### Project: 118-9776 - Harrison Elementary School - Modernization

Vendor	Encumbrance	Expenditure	Balance	Description
<b>Project Total:</b>	<b>\$215,476.12</b>	<b>(\$32,394.03)</b>	<b>\$183,082.09</b>	<b>118-9776 - Harrison Elementary School - Modernization</b>

### Project: 122-9772 - Highgrove Elementary School - New Construction

Vendor	Encumbrance	Expenditure	Balance	Description
California Department Of Ed	\$4,835.46	(\$4,835.46)	\$0.00	Plan Check Fees
Ruhnau Clarke Architects	\$4,643.03	\$0.00	\$4,643.03	Architect Fees
<b>Project Total:</b>	<b>\$9,478.49</b>	<b>(\$4,835.46)</b>	<b>\$4,643.03</b>	<b>122-9772 - Highgrove Elementary School - New Construction</b>

### Project: 122-9776 - Highgrove Elementary School - Modernization

Vendor	Encumbrance	Expenditure	Balance	Description
Alliant Consulting, Inc.	\$10,542.50	\$0.00	\$10,542.50	Labor Compliance
B & H Photo	\$102.18	(\$102.18)	\$0.00	Technology Costs
Bastion Security Inc	\$1,771.00	\$0.00	\$1,771.00	Security Costs
California Department Of Ed	\$3,780.00	(\$3,780.00)	\$0.00	Plan Check Fees
Inland Building Construction Companies, Inc.	\$6,100.00	(\$6,100.00)	\$0.00	Construction Costs
Ruhnau Clarke Architects	\$4,503.28	\$0.00	\$4,503.28	Architect Fees
Simmons and Wood Inc.	(\$1,509.00)	\$1,509.00	\$0.00	Construction Costs
Statewide Educational Wrap-up Program (SEWUP)	\$423.04	(\$423.04)	\$0.00	Insurance
<b>Project Total:</b>	<b>\$25,713.00</b>	<b>(\$8,896.22)</b>	<b>\$16,816.78</b>	<b>122-9776 - Highgrove Elementary School - Modernization</b>

### Project: 128-9772 - Jackson Elementary School - New Construction

Vendor	Encumbrance	Expenditure	Balance	Description
California Department Of Ed	\$4,587.24	(\$4,587.24)	\$0.00	Plan Check Fees
<b>Project Total:</b>	<b>\$4,587.24</b>	<b>(\$4,587.24)</b>	<b>\$0.00</b>	<b>128-9772 - Jackson Elementary School - New Construction</b>

### Project: 128-9776 - Jackson Elementary School - Modernization

Vendor	Encumbrance	Expenditure	Balance	Description
Bastion Security Inc	\$6,531.60	(\$6,531.60)	\$0.00	Security Costs
Burgess Moving And Storage Company	\$21,451.75	(\$12,002.37)	\$9,449.38	Moving Costs
C.T. Georgiou Painting Co.	\$220,530.52	(\$77,911.87)	\$142,618.65	Construction Costs
California Department Of Ed	\$4,587.24	(\$4,587.24)	\$0.00	Plan Check Fees
Cardinal Environmental Consultants, Inc.	\$6,000.00	\$0.00	\$6,000.00	Environmental Costs
Caston, Inc.	\$733,965.49	(\$587,057.31)	\$146,908.18	Construction Costs
Champion Electric, Inc.	\$471,008.84	(\$412,112.03)	\$58,896.81	Electrical Costs

## MEASURE O 2020/2021 ENCUMBRANCES & EXPENDITURES

### Project: 128-9776 - Jackson Elementary School - Modernization

Vendor	Encumbrance	Expenditure	Balance	Description
Dalke & Sons Construction, Inc.	\$916,935.57	(\$841,045.88)	\$75,889.69	Construction Costs
Division Of The State Architect	\$6,237.02	(\$6,237.02)	\$0.00	Plan Check Fees
Erickson-Hall Construction Co.	\$446,902.91	(\$395,000.00)	\$51,902.91	Construction Management
Gafcon, Inc.	\$13,710.50	(\$8,228.00)	\$5,482.50	Labor Compliance
Inland Building Construction Companies, Inc.	\$835,354.50	(\$733,844.00)	\$101,510.50	Construction Costs
Letner Roofing Co.	\$457,460.75	(\$299,136.95)	\$158,323.80	Construction Costs
Nexus IS, Inc.	\$28,820.32	\$0.00	\$28,820.32	Furniture & Equipment
Office & Ergonomic Solutions, Inc	\$12,227.68	(\$12,227.68)	\$0.00	Furniture and Equipment
Platinum Construction, Inc.	\$203,413.82	(\$47,714.64)	\$155,699.18	Construction
R M A Group	\$87,046.00	(\$86,316.15)	\$729.85	Site Survey
Simco Mechanical, Inc.	\$335,169.06	(\$114,588.72)	\$220,580.34	Permanent Construction Costs
Smith System MFG. Co.	(\$32,891.14)	\$32,891.14	\$0.00	Furniture & Equipment
Wolff/Lang/Christopher Architects, Incorporated	\$62,380.29	(\$62,380.29)	\$0.00	Architect Fees
<b>Project Total:</b>	<b>\$4,836,842.72</b>	<b>(\$3,674,030.61)</b>	<b>\$1,162,812.11</b>	<b>128-9776 - Jackson Elementary School - Modernization</b>

### Project: 130-9772 - Jefferson Elementary School - New Construction

Vendor	Encumbrance	Expenditure	Balance	Description
Wolff/Lang/Christopher Architects, Incorporated	\$8,358.69	\$0.00	\$8,358.69	Architect Fees
<b>Project Total:</b>	<b>\$8,358.69</b>	<b>\$0.00</b>	<b>\$8,358.69</b>	<b>130-9772 - Jefferson Elementary School - New Construction</b>

### Project: 130-9776 - Jefferson Elementary School - Modernization

Vendor	Encumbrance	Expenditure	Balance	Description
Alliant Consulting, Inc.	\$2,901.25	\$0.00	\$2,901.25	Labor Compliance
Burgess Moving And Storage Company	\$2,160.00	(\$2,160.00)	\$0.00	Moving Costs
Easy Networks Cabling Inc.	\$2,986.49	\$0.00	\$2,986.49	Technology
Erickson-Hall Construction Co.	\$42,380.25	\$0.00	\$42,380.25	Construction Management
Farnsworth Group, Inc.	\$1,000.00	(\$1,000.00)	\$0.00	Legal
Geocon West, Inc.	\$22,680.26	\$0.00	\$22,680.26	Geotechnical Costs
King Companies	\$348.54	\$0.00	\$348.54	Moving Costs
Knowland Construction Services	\$12,302.93	\$0.00	\$12,302.93	Inspection Services
State Water Resources Control Board	\$509.00	(\$509.00)	\$0.00	Other Planning Costs/Storm Water Management
Technet Partners Inc.	\$416.50	(\$416.50)	\$0.00	Technology/Network



## MEASURE O 2020/2021 ENCUMBRANCES & EXPENDITURES

### Project: 130-9776 - Jefferson Elementary School - Modernization

Vendor	Encumbrance	Expenditure	Balance	Description
Wolff/Lang/Christopher Architects, Incorporated	\$52,840.25	(\$21,207.55)	\$31,632.70	Architect Fees
<b>Project Total:</b>	<b>\$140,525.47</b>	<b>(\$25,293.05)</b>	<b>\$115,232.42</b>	<b>130-9776 - Jefferson Elementary School - Modernization</b>

### Project: 136-9772 - Longfellow Elementary School - New Construction

Vendor	Encumbrance	Expenditure	Balance	Description
California Department Of Ed	\$4,664.16	(\$4,664.16)	\$0.00	Plan Check Fees
DLR Group, Inc.	\$6,539.59	(\$148.13)	\$6,391.46	Architect Fees
Fusion Sign And Design, Inc.	\$1,385.31	\$0.00	\$1,385.31	Signage Costs
Hernandez, Guadalupe	\$14,080.00	(\$14,080.00)	\$0.00	Relocation Fee
Overland, Pacific & Cutler LLC	\$3,713.84	\$0.00	\$3,713.84	Property Management Services
Placeworks	\$23,150.00	(\$13,779.87)	\$9,370.13	Environmental/CEQA
Riverside, City Of	\$5,714.80	(\$5,714.80)	\$0.00	Permits & Fees
<b>Project Total:</b>	<b>\$59,247.70</b>	<b>(\$38,386.96)</b>	<b>\$20,860.74</b>	<b>136-9772 - Longfellow Elementary School - New Construction</b>

### Project: 136-9776 - Longfellow Elementary School - Modernization

Vendor	Encumbrance	Expenditure	Balance	Description
CLM Professional Services, Inc.	\$7,600.00	\$0.00	\$7,600.00	Survey
Cardinal Environmental Consultants, Inc.	\$10,250.00	\$0.00	\$10,250.00	Environmental Costs
Cordoba Corporation	\$29,783.20	\$0.00	\$29,783.20	Project Management
DLR Group, Inc.	\$432,709.19	(\$245,715.06)	\$186,994.13	Architect Fees
First Construction Services, Inc.	\$288,016.00	\$0.00	\$288,016.00	Inspection Costs
Gafcon, Inc.	\$37,363.50	\$0.00	\$37,363.50	Labor Compliance
Interior Demolition, Inc.	\$70,590.00	(\$67,060.50)	\$3,529.50	Demolition Costs
Neff Construction, Inc.	\$268,172.05	\$0.00	\$268,172.05	Construction Management
Southern California News Group	\$4,244.80	\$0.00	\$4,244.80	Advertising
Southwest Site Services	\$2,807.56	(\$2,524.20)	\$283.36	Fencing Costs
State Water Resources Control Board	\$652.00	(\$652.00)	\$0.00	Other Planning Costs/Storm Water Management
TGR Geotechnical, Inc.	\$90,920.00	\$0.00	\$90,920.00	Geotechnical Costs
<b>Project Total:</b>	<b>\$1,243,108.30</b>	<b>(\$315,951.76)</b>	<b>\$927,156.54</b>	<b>136-9776 - Longfellow Elementary School - Modernization</b>

### Project: 138-9772 - Madison Elementary School - New Construction

Vendor	Encumbrance	Expenditure	Balance	Description
LPA Architects	\$25,060.64	(\$6,036.85)	\$19,023.79	Architect Fees

## MEASURE O 2020/2021 ENCUMBRANCES & EXPENDITURES

### Project: 138-9772 - Madison Elementary School - New Construction

Vendor	Encumbrance	Expenditure	Balance	Description
<b>Project Total:</b>	<b>\$25,060.64</b>	<b>(\$6,036.85)</b>	<b>\$19,023.79</b>	<b>138-9772 - Madison Elementary School - New Construction</b>

### Project: 138-9776 - Madison Elementary School - Modernization

Vendor	Encumbrance	Expenditure	Balance	Description
Alliant Consulting, Inc.	\$16,306.25	\$0.00	\$16,306.25	Labor Compliance
Arrowhead Mechanical, Inc.	\$212,851.06	(\$212,851.06)	\$0.00	Construction Costs
Bell Roofing Company	\$32,416.22	(\$28,783.22)	\$3,633.00	Construction Costs
Bravo Construction Services, Inc.	\$215,968.87	(\$175,826.42)	\$40,142.45	Construction Costs
Burgess Moving And Storage Company	\$3,105.00	(\$3,105.00)	\$0.00	Moving Costs
C.T. Georgiou Painting Co.	\$23,071.96	(\$23,071.96)	\$0.00	Construction Costs
CLM Professional Services, Inc.	\$3,700.00	(\$1,250.00)	\$2,450.00	Survey
California Department Of Ed	\$7,668.71	(\$7,668.71)	\$0.00	Plan Check Fees
Cardinal Environmental Consultants, Inc.	\$4,607.50	\$0.00	\$4,607.50	Environmental Costs
Caston, Inc.	\$82,656.87	(\$82,656.87)	\$0.00	Construction Costs
Columbia Steel, Inc.	\$37,898.00	(\$37,898.00)	\$0.00	Construction Costs
Construction Hardware Co.	\$13,969.64	(\$1,344.19)	\$12,625.45	Construction Costs
Continental Flooring, Inc.	\$67,330.16	(\$4,388.99)	\$62,941.17	Construction Costs
Converse Consultants	\$48.00	\$0.00	\$48.00	Site Survey
DAART Engineering Company, Inc.	\$6,462.68	(\$3,463.22)	\$2,999.46	Construction Costs
Defoe Furniture 4 Kids Inc	\$6,372.63	(\$6,372.63)	\$0.00	Furniture
Division Of The State Architect	\$30,180.74	(\$30,180.74)	\$0.00	Plan Check Fees
ECAM Secure	\$1,200.00	\$0.00	\$1,200.00	Security
Easy Networks Cabling Inc.	\$3,938.65	\$0.00	\$3,938.65	Technology
Fischer Inc.	\$104,873.78	(\$104,873.78)	\$0.00	Construction Costs
Grainger	(\$317.51)	\$317.51	\$0.00	Equipment Supplier
Inland Pacific Tile, Inc.	\$7,075.69	(\$7,075.69)	\$0.00	Construction Costs
K & Z Cabinet Co., Inc.	\$26,179.17	(\$15,762.00)	\$10,417.17	Construction Costs
King Companies	\$632.20	\$0.00	\$632.20	Moving Costs
Knowland Construction Services	\$4,900.74	(\$4,900.74)	\$0.00	Inspection Services
LPA Architects	\$28,348.33	(\$14,876.57)	\$13,471.76	Architect Fees
Marina Landscape, Inc.	\$25,788.00	(\$25,788.00)	\$0.00	Construction Costs
Neff Construction, Inc.	\$66,324.26	\$0.00	\$66,324.26	Construction Management
Prospectra Contract Flooring	\$48,388.48	(\$37,685.06)	\$10,703.42	Flooring Costs

## MEASURE O 2020/2021 ENCUMBRANCES & EXPENDITURES

### Project: 138-9776 - Madison Elementary School - Modernization

Vendor	Encumbrance	Expenditure	Balance	Description
RVH Constructors, Inc.	\$119,432.55	(\$119,432.55)	\$0.00	Construction Costs
Rocky Coast Builders, Inc	\$235,510.45	(\$235,510.45)	\$0.00	Construction Costs
Sierra School Equipment Co	\$6,173.52	\$0.00	\$6,173.52	Furniture & Equipment
Southcoast Acoustical Interiors, Inc	\$17,535.08	(\$4,781.04)	\$12,754.04	Construction Costs
State Water Resources Control Board	\$553.00	(\$553.00)	\$0.00	Other Planning Costs/Storm Water Management
Statewide Educational Wrap-up Program (SEWUP)	\$672.00	(\$672.00)	\$0.00	Insurance
T3 Contractors Corp.	\$51,341.62	(\$51,341.62)	\$0.00	Construction Costs
The Mike Cox Electric, Inc.	\$32,281.14	(\$32,281.14)	\$0.00	Electrical Costs
Troxell Communications, Inc.	\$911.19	(\$911.19)	\$0.00	Technology Costs
Velocity Glazing, Inc.	\$24,315.41	(\$10,625.37)	\$13,690.04	Construction Costs
<b>Project Total:</b>	<b>\$1,570,672.04</b>	<b>(\$1,285,613.70)</b>	<b>\$285,058.34</b>	<b>138-9776 - Madison Elementary School - Modernization</b>

### Project: 140-9772 - Magnolia Elementary School - New Construction

Vendor	Encumbrance	Expenditure	Balance	Description
ATI Architects And Engineers	\$43,361.43	(\$32,330.80)	\$11,030.63	Architect Fees
California Department Of Ed	\$3,062.80	(\$3,062.80)	\$0.00	Plan Check Fees
Geocon West, Inc.	\$61,733.00	(\$3,327.50)	\$58,405.50	Geotechnical Costs
<b>Project Total:</b>	<b>\$108,157.23</b>	<b>(\$38,721.10)</b>	<b>\$69,436.13</b>	<b>140-9772 - Magnolia Elementary School - New Construction</b>

### Project: 140-9776 - Magnolia Elementary School - Modernization

Vendor	Encumbrance	Expenditure	Balance	Description
ATI Architects And Engineers	\$24,422.73	\$0.00	\$24,422.73	Architect Fees
Bithell Inc.	\$11,966.01	(\$5,002.01)	\$6,964.00	Construction Costs
Bogh Engineering Inc.	\$335,740.56	(\$108,065.55)	\$227,675.01	Construction Costs
California Department Of Ed	\$1,287.80	(\$1,287.80)	\$0.00	Plan Check Fees
Cardinal Environmental Consultants, Inc.	\$2,095.20	\$0.00	\$2,095.20	Environmental Costs
Caston, Inc.	\$97,526.70	(\$27,055.70)	\$70,471.00	Construction Costs
Champion Electric, Inc.	\$191,373.90	(\$80,097.90)	\$111,276.00	Electrical Costs
Design West Engineering, Inc.	\$5,301.00	(\$5,301.00)	\$0.00	Engineering Services
Division Of The State Architect	\$2,526.25	(\$2,526.25)	\$0.00	Plan Check Fees
Donald M. Hoover Company	\$22,725.81	(\$3,736.81)	\$18,989.00	Construction Costs
Elrod Fence Co., Inc.	\$5,900.00	(\$5,900.00)	\$0.00	Fencing Costs



## MEASURE O 2020/2021 ENCUMBRANCES & EXPENDITURES

Project: 140-9776 - Magnolia Elementary School - Modernization				
Vendor	Encumbrance	Expenditure	Balance	Description
Ewing Irrigation Products, Inc.	\$938.64	(\$938.64)	\$0.00	Supplies
Franklin Mechanical Systems, Inc.	\$301,444.59	(\$107,644.59)	\$193,800.00	Construction Costs
Gafcon, Inc.	\$4,953.36	(\$3,476.00)	\$1,477.36	Labor Compliance
Horizons Construction Co. Int'l, Inc.	\$394,631.80	(\$261,255.80)	\$133,376.00	Construction
Infinity Structures, Inc.	\$46,320.30	(\$46,320.30)	\$0.00	Construction Costs
Inland Building Construction Companies, Inc.	\$148,621.83	(\$148,621.83)	\$0.00	Construction Costs
Inland Pacific Tile, Inc.	\$1,635.90	(\$1,635.90)	\$0.00	Construction Costs
Interpipe Contracting, Inc.	\$80,763.00	(\$80,763.00)	\$0.00	Plumbing Contractor
Keenan Associates	\$3,292.00	(\$3,292.00)	\$0.00	Insurance
Nexus IS, Inc.	\$4,350.00	(\$2,175.00)	\$2,175.00	Furniture & Equipment
Office & Ergonomic Solutions, Inc	\$2,298.98	(\$2,298.98)	\$0.00	Furniture and Equipment
Ortco, Inc.	\$7,665.00	\$0.00	\$7,665.00	Construction
Rite-Way Roof Corporation	\$56,057.86	(\$14,998.86)	\$41,059.00	Roofing Costs
SWPPP CAL	\$5,260.00	(\$3,600.00)	\$1,660.00	Other Construction Costs/Stormwater Management
Southcoast Acoustical Interiors, Inc	\$41,250.00	(\$877.00)	\$40,373.00	Construction Costs
Southern California Landscaping, Inc.	\$340,225.00	(\$340,225.00)	\$0.00	Landscaping Costs
Southland Inspections, Inc.	\$16,329.00	(\$10,800.00)	\$5,529.00	Inspection Costs
Stolo Cabinets, Inc.	\$40,682.30	(\$10,498.30)	\$30,184.00	Construction Costs
Tilden-Coil Constructors	\$122,335.41	(\$122,334.79)	\$0.62	Construction Management
<b>Project Total:</b>	<b>\$2,319,920.93</b>	<b>(\$1,400,729.01)</b>	<b>\$919,191.92</b>	<b>140-9776 - Magnolia Elementary School - Modernization</b>
Project: 142-9772 - Monroe Elementary School - New Construction				
Vendor	Encumbrance	Expenditure	Balance	Description
California Department Of Ed	\$5,614.35	(\$5,614.35)	\$0.00	Plan Check Fees
<b>Project Total:</b>	<b>\$5,614.35</b>	<b>(\$5,614.35)</b>	<b>\$0.00</b>	<b>142-9772 - Monroe Elementary School - New Construction</b>
Project: 142-9776 - Monroe Elementary School - Modernization				
Vendor	Encumbrance	Expenditure	Balance	Description
Amtek Construction	\$2,187,608.99	(\$813,092.24)	\$1,374,516.75	Construction Contractor
Beltmann Relocation Group	\$40,150.00	(\$18,401.78)	\$21,748.22	Moving and Storage
Bravo Construction Services, Inc.	\$2,282,119.55	(\$1,185,854.41)	\$1,096,265.14	Construction Costs
CDW-Government Inc.	\$14,755.58	\$0.00	\$14,755.58	Plan Check Fees
California Department Of Ed	\$5,614.35	(\$5,614.35)	\$0.00	Plan Check Fees

## MEASURE O 2020/2021 ENCUMBRANCES & EXPENDITURES

Project: 142-9776 - Monroe Elementary School - Modernization				
Vendor	Encumbrance	Expenditure	Balance	Description
Cannon Corporation	\$394.00	\$0.00	\$394.00	Site Survey
Canyon Steel Fabricators, Inc.	\$955,501.75	(\$612,280.56)	\$343,221.19	Construction Costs
Cardinal Environmental Consultants, Inc.	\$13,500.00	(\$2,269.00)	\$11,231.00	Environmental Costs
Caston, Inc.	\$326,260.25	(\$130,033.15)	\$196,227.10	Construction Costs
Crew, Inc.	\$612,106.78	(\$363,001.57)	\$249,105.21	Construction Costs
Erickson-Hall Construction Co.	\$1,636,600.00	(\$705,000.00)	\$931,600.00	Construction Management
Farnsworth Group, Inc.	\$19,700.00	(\$6,193.00)	\$13,507.00	Legal
Fischer Inc.	\$1,486,945.90	(\$541,253.00)	\$945,692.90	Construction Costs
Gafcon, Inc.	\$23,319.50	(\$4,888.00)	\$18,431.50	Labor Compliance
HMC Architects	\$12,000.00	(\$11,270.18)	\$729.82	Architect Fees
Hamel Contracting, Inc.	\$2,369,047.02	(\$709,629.71)	\$1,659,417.31	Construction Costs
Infinity Structures, Inc.	\$354,247.50	(\$106,789.50)	\$247,458.00	Construction Costs
Inland Lighting Supplies, Inc	\$5,176.50	(\$5,176.50)	\$0.00	Lighting Store
Knowland Construction Services	\$82,368.00	(\$82,368.00)	\$0.00	Inspection Services
Leighton Consulting, Inc	\$337,642.60	(\$123,712.31)	\$213,930.29	Site Survey
Letner Roofing Co.	\$1,165,600.00	(\$322,456.60)	\$843,143.40	Construction Costs
McKernan Inc.	\$593,100.00	(\$261,874.81)	\$331,225.19	Construction Contractor
Mobile Modular Management Corp	\$32,389.00	(\$14,082.00)	\$18,307.00	Construction Costs
Montgomery Hardware Company	\$890.65	(\$890.65)	\$0.00	Construction Costs
N E P Painting Contractor's, Inc.	\$245,000.00	(\$36,157.00)	\$208,843.00	Commercial Painters
Nuway, Inc.	\$411,639.15	(\$53,903.00)	\$357,736.15	Construction Contractor
Progressive Surface Solutions, LLC	\$558,661.25	(\$72,843.48)	\$485,817.77	Construction Contractor
Riverside, City Of	\$1,702.00	(\$1,702.00)	\$0.00	Permits & Fees
Siemens Industry, Inc.	\$26,014.94	(\$12,882.50)	\$13,132.44	Construction Costs
Simco Mechanical, Inc.	\$1,147,517.50	(\$530,061.99)	\$617,455.51	Permanent Construction Costs
Southern California News Group	\$562.50	(\$562.50)	\$0.00	Advertising
State Water Resources Control Board	\$756.00	(\$756.00)	\$0.00	Other Planning Costs/Storm Water Management
Stolo Cabinets, Inc.	\$203,484.20	(\$27,477.80)	\$176,006.40	Construction Costs
<b>Project Total:</b>	<b>\$17,152,375.46</b>	<b>(\$6,762,477.59)</b>	<b>\$10,389,897.87</b>	<b>142-9776 - Monroe Elementary School - Modernization</b>
Project: 250-9776 - Sierra Middle - Modernization				
Vendor	Encumbrance	Expenditure	Balance	Description
RAN Enterprises Inc	\$137,995.50	(\$137,995.50)	\$0.00	Construction Costs

## MEASURE O 2020/2021 ENCUMBRANCES & EXPENDITURES

### Project: 250-9776 - Sierra Middle - Modernization

Vendor	Encumbrance	Expenditure	Balance	Description
<b>Project Total:</b>	<b>\$137,995.50</b>	<b>(\$137,995.50)</b>	<b>\$0.00</b>	<b>250-9776 - Sierra Middle - Modernization</b>

### Project: 260-9772 - University Middle School - New Construction

Vendor	Encumbrance	Expenditure	Balance	Description
California Department Of Ed	\$1,515.32	(\$1,515.32)	\$0.00	Plan Check Fees
<b>Project Total:</b>	<b>\$1,515.32</b>	<b>(\$1,515.32)</b>	<b>\$0.00</b>	<b>260-9772 - University Middle School - New Construction</b>

### Project: 260-9776 - University Middle School - Modernization

Vendor	Encumbrance	Expenditure	Balance	Description
California Department Of Ed	\$1,817.27	(\$1,817.27)	\$0.00	Plan Check Fees
Cardinal Environmental Consultants, Inc.	\$3,500.00	\$0.00	\$3,500.00	Environmental Costs
Erickson-Hall Construction Co.	\$57,000.00	(\$4,500.00)	\$52,500.00	Construction Management
Gafcon, Inc.	\$21,090.00	\$0.00	\$21,090.00	Labor Compliance
Go Architects, Inc.	\$2,875.00	\$0.00	\$2,875.00	Architects Fees
Southern California News Group	\$2,381.60	\$0.00	\$2,381.60	Advertising
Southland Inspections, Inc.	\$297,000.00	\$0.00	\$297,000.00	Inspection Costs
<b>Project Total:</b>	<b>\$385,663.87</b>	<b>(\$6,317.27)</b>	<b>\$379,346.60</b>	<b>260-9776 - University Middle School - Modernization</b>

### Project: 310-9772 - Arlington High School - New Construction

Vendor	Encumbrance	Expenditure	Balance	Description
Ruhnau Clarke Architects	\$249,904.21	(\$217,165.69)	\$32,738.52	Architect Fees
<b>Project Total:</b>	<b>\$249,904.21</b>	<b>(\$217,165.69)</b>	<b>\$32,738.52</b>	<b>310-9772 - Arlington High School - New Construction</b>

### Project: 310-9776 - Arlington High School - Modernization

Vendor	Encumbrance	Expenditure	Balance	Description
Adi	\$15,933.56	(\$1,693.40)	\$14,240.16	Permanent Construction Costs
All Star Air Systems Inc	\$491,854.21	(\$322,443.01)	\$169,411.20	Construction Costs
Armstrong & Brooks Consult. Engs.	\$10,320.00	(\$10,320.00)	\$0.00	Construction Costs
Bell Roofing Company	\$740,866.45	(\$480,983.18)	\$259,883.27	Construction Costs
Bogh Engineering Inc.	\$1,245,649.00	(\$1,014,242.00)	\$231,407.00	Construction Costs
C.T. Georgiou Painting Co.	\$225,000.00	(\$180,678.59)	\$44,321.41	Construction Costs
CDW-Government Inc.	\$16,595.88	\$0.00	\$16,595.88	Plan Check Fees



## MEASURE O 2020/2021 ENCUMBRANCES & EXPENDITURES

Project: 310-9776 - Arlington High School - Modernization				
Vendor	Encumbrance	Expenditure	Balance	Description
California Commercial Pools, Inc.	\$1,761,283.00	(\$881,004.00)	\$880,279.00	Construction Costs
Cardinal Environmental Consultants, Inc.	\$9,043.00	(\$4,521.50)	\$4,521.50	Environmental Costs
Caston, Inc.	\$830,861.10	(\$756,474.17)	\$74,386.93	Construction Costs
Continental Marble and Tile Co.	\$109,538.56	(\$70,977.35)	\$38,561.21	Other Construction
Crew, Inc.	\$314,899.00	(\$240,507.60)	\$74,391.40	Construction Costs
DAART Engineering Company, Inc.	\$63,853.50	(\$49,836.98)	\$14,016.52	Construction Costs
Design West Engineering, Inc.	\$20,400.00	(\$15,300.00)	\$5,100.00	Engineering Services
F.E.C. Electric	\$1,437,836.20	(\$1,112,281.05)	\$325,555.15	Construction Costs
First Construction Services, Inc.	\$79,040.00	(\$79,040.00)	\$0.00	Inspection Costs
Gafcon, Inc.	\$16,823.17	(\$8,990.00)	\$7,833.17	Labor Compliance
Infinity Structures, Inc.	\$495,914.91	(\$345,342.60)	\$150,572.31	Construction Costs
Inland Empire Landscape, Inc.	\$189,099.64	(\$91,211.71)	\$97,887.93	Construction
KI, Pallas Textiles, OEI	\$86,933.73	(\$86,933.73)	\$0.00	Construction Costs
Leighton Consulting, Inc	\$137,520.39	(\$82,143.80)	\$55,376.59	Site Survey
New Dimension Masonry, Inc.	\$137,956.35	(\$41,690.74)	\$96,265.61	Construction Costs
New Star Construction Services, Inc.	\$176,998.13	(\$176,998.13)	\$0.00	Construction Contractor
Nexus IS, Inc.	\$172,362.11	\$0.00	\$172,362.11	Furniture & Equipment
Office & Ergonomic Solutions, Inc	\$22,020.97	\$0.00	\$22,020.97	Furniture and Equipment
Placeworks	\$21,554.90	\$0.00	\$21,554.90	Environmental/CEQA
Queen City Glass Co.	\$440,709.13	(\$362,798.42)	\$77,910.71	Construction Costs
RND Contractors Inc.	\$176,629.01	(\$87,954.01)	\$88,675.00	Construction Costs
Rc Construction, Inc.	\$2,316,030.82	(\$2,108,763.49)	\$207,267.33	Construction Costs
Ruhnau Clarke Architects	\$100,878.00	(\$42,368.50)	\$58,509.50	Architect Fees
Siemens Industry, Inc.	\$24,650.00	(\$24,650.00)	\$0.00	Construction Costs
Signature Flooring, Inc.	\$102,911.15	(\$94,916.16)	\$7,994.99	Flooring Construction
Southcoast Acoustical Interiors, Inc	\$159,951.05	(\$136,178.68)	\$23,772.37	Construction Costs
Technet Partners Inc.	\$70,732.31	(\$30,845.29)	\$39,887.02	Technology/Network
The Gas Company	\$17,059.09	(\$17,059.09)	\$0.00	Utility Costs
Tilden-Coil Constructors	\$789,007.00	(\$789,007.00)	\$0.00	Construction Management
Troxell Communications, Inc.	\$2,289.75	(\$2,289.75)	\$0.00	Technology Costs
Valley Industrial Mechanical	\$795,684.88	(\$457,211.72)	\$338,473.16	Construction Costs
<b>Project Total:</b>	<b>\$13,826,689.95</b>	<b>(\$10,207,655.65)</b>	<b>\$3,619,034.30</b>	<b>310-9776 - Arlington High School - Modernization</b>

## MEASURE O 2020/2021 ENCUMBRANCES & EXPENDITURES

Project: 330-9776 - North High School - Modernization				
Vendor	Encumbrance	Expenditure	Balance	Description
Go Architects, Inc.	\$180,375.00	(\$177,687.72)	\$2,687.28	Architects Fees
Tilden-Coil Constructors	\$72,187.50	(\$72,187.50)	\$0.00	Construction Management
<b>Project Total:</b>	<b>\$252,562.50</b>	<b>(\$249,875.22)</b>	<b>\$2,687.28</b>	<b>330-9776 - North High School - Modernization</b>
Project: 340-9772-1 - Poly High School - New Construction (NEW GYM)				
Vendor	Encumbrance	Expenditure	Balance	Description
Apex Fire Protection, Inc.	\$44,383.75	(\$29,074.75)	\$15,309.00	Construction Costs
Arrowhead Mechanical, Inc.	\$514,978.55	(\$302,662.59)	\$212,315.96	Construction Costs
Bogh Engineering Inc.	\$820,227.77	(\$442,543.77)	\$377,684.00	Construction Costs
Canyon Steel Fabricators, Inc.	\$241,874.10	(\$123,755.16)	\$118,118.94	Construction Costs
Cardinal Environmental Consultants, Inc.	\$4,750.00	(\$3,198.00)	\$1,552.00	Environmental Costs
Caston, Inc.	\$380,245.25	(\$336,171.75)	\$44,073.50	Construction Costs
Construction Electric Inc	\$856,366.17	(\$329,187.80)	\$527,178.37	Electrical Costs
Crew, Inc.	\$460,140.00	(\$139,583.00)	\$320,557.00	Construction Costs
Dan Worley Plumbing Inc.	\$299,421.00	(\$129,470.75)	\$169,950.25	Construction Costs
Gafcon, Inc.	\$14,596.00	(\$2,826.00)	\$11,770.00	Labor Compliance
Geocon West, Inc.	\$176,665.25	(\$107,149.25)	\$69,516.00	Geotechnical Costs
Letner Roofing Co.	\$372,790.00	(\$223,006.80)	\$149,783.20	Construction Costs
Majestic Masonry, Inc.	\$681,232.81	(\$558,005.91)	\$123,226.90	Construction Contractor
Southland Inspections, Inc.	\$181,980.00	(\$65,160.00)	\$116,820.00	Inspection Costs
Tilden-Coil Constructors	(\$63,063.28)	\$63,063.28	\$0.00	Construction Management
<b>Project Total:</b>	<b>\$4,986,587.37</b>	<b>(\$2,728,732.25)</b>	<b>\$2,257,855.12</b>	<b>340-9772-1 - Poly High School - New Construction (NEW GYM)</b>
Project: 340-9776 - Poly High School - QUAD Modernization				
Vendor	Encumbrance	Expenditure	Balance	Description
Conserve Landcare, Inc.	\$29,565.90	(\$29,565.90)	\$0.00	Construction Costs
Department of General Services	\$14,728.18	(\$14,728.18)	\$0.00	Plan Check Fees
Gafcon, Inc.	\$13,550.00	(\$12,941.00)	\$609.00	Labor Compliance
Hamel Contracting, Inc.	\$243,476.26	(\$243,476.26)	\$0.00	Construction Costs
JPI Development Group, Inc.	\$14,856.85	(\$14,856.85)	\$0.00	Construction Costs
MVC Enterprises Inc	\$235,239.20	\$0.00	\$235,239.20	Construction
R.I.S. Electrical Contractors, Inc.	\$32,035.00	(\$32,035.00)	\$0.00	Construction Costs
Schroeder Iron Corporation	\$75,270.45	\$0.00	\$75,270.45	Construction Costs

## MEASURE O 2020/2021 ENCUMBRANCES & EXPENDITURES

### Project: 340-9776 - Poly High School - QUAD Modernization

Vendor	Encumbrance	Expenditure	Balance	Description
Technet Partners Inc.	\$1,040.56	(\$1,040.56)	\$0.00	Technology/Network
Tilden-Coil Constructors	\$73,080.64	(\$73,078.00)	\$2.64	Construction Management
Wolff/Lang/Christopher Architects, Incorporated	\$661,921.17	(\$86,802.30)	\$575,118.87	Architect Fees
<b>Project Total:</b>	<b>\$1,394,764.21</b>	<b>(\$508,524.05)</b>	<b>\$886,240.16</b>	<b>340-9776 - Poly High School - QUAD Modernization</b>

### Project: 360-9772 - STEM High School @ UCR - New Construction

Vendor	Encumbrance	Expenditure	Balance	Description
Placeworks	\$3,199.62	\$0.00	\$3,199.62	Environmental/CEQA
Ruhnau Clarke Architects	\$425,896.90	\$0.00	\$425,896.90	Architect Fees
UCR Regents	\$399,631.00	(\$16,763.25)	\$382,867.75	Other Planning Costs
<b>Project Total:</b>	<b>\$828,727.52</b>	<b>(\$16,763.25)</b>	<b>\$811,964.27</b>	<b>360-9772 - STEM High School @ UCR - New Construction</b>

### Project: 460-9776 - Sunshine Early Childhood Center - Modernization

Vendor	Encumbrance	Expenditure	Balance	Description
Cardinal Environmental Consultants, Inc.	\$5,953.75	(\$5,953.75)	\$0.00	Environmental Costs
Empyrean Plumbing, Inc.	\$155,764.19	(\$72,130.60)	\$83,633.59	Construction Costs
Erickson-Hall Construction Co.	\$188,041.20	(\$185,500.00)	\$2,541.20	Construction Management
Gafcon, Inc.	\$16,626.36	(\$7,118.00)	\$9,508.36	Labor Compliance
Go Architects, Inc.	\$59,769.56	(\$59,769.56)	\$0.00	Architects Fees
Inland Building Construction Companies, Inc.	\$63,314.70	(\$63,314.70)	\$0.00	Construction Costs
Inland Inspections & Consulting	\$105,455.00	(\$97,402.50)	\$8,052.50	Consultant Costs
<b>Project Total:</b>	<b>\$594,924.76</b>	<b>(\$491,189.11)</b>	<b>\$103,735.65</b>	<b>460-9776 - Sunshine Early Childhood Center - Modernization</b>

### Project: 612-0000 - Facilities Projects - Undistributed

Vendor	Encumbrance	Expenditure	Balance	Description
Atkinson, Andelson, Loya, Ruud &	\$49,178.57	(\$49,178.57)	\$0.00	Legal Costs
BLX Group	\$2,900.00	(\$1,450.00)	\$1,450.00	Consultant Costs
Best, Best, & Krieger, LLP	\$1,375.10	\$0.00	\$1,375.10	Legal Fees
California Financial Services	\$90,000.00	(\$84,187.50)	\$5,812.50	Project Planning & Support
Colbi Technologies, Inc.	\$140,341.81	(\$138,625.00)	\$1,716.81	Software Support
Cordoba Corporation	\$321,441.25	(\$204,792.00)	\$116,649.25	Project Management
Educational Facility Services	\$31,800.00	\$0.00	\$31,800.00	Consultant
Go Architects, Inc.	\$54,167.00	\$0.00	\$54,167.00	Architects Fees



## MEASURE O 2020/2021 ENCUMBRANCES & EXPENDITURES

Project: 612-0000 - Facilities Projects - Undistributed				
Vendor	Encumbrance	Expenditure	Balance	Description
Jeanette L. Garcia & Associates	\$20,000.00	\$0.00	\$20,000.00	Auditor
Southern California News Group	\$6,423.40	(\$6,423.40)	\$0.00	Advertising
Tao Rossini, A Professional Corporation	\$5,093.75	(\$1,705.00)	\$3,388.75	Legal Consulting Services
<b>Project Total:</b>	<b>\$722,720.88</b>	<b>(\$486,361.47)</b>	<b>\$236,359.41</b>	<b>612-0000 - Facilities Projects - Undistributed</b>
Project: 612-9776 - Facilities Projects - Modernization				
Vendor	Encumbrance	Expenditure	Balance	Description
B Safe Playground Inspection Services Inc	\$4,650.00	(\$3,950.00)	\$700.00	Inspection Services
<b>Project Total:</b>	<b>\$4,650.00</b>	<b>(\$3,950.00)</b>	<b>\$700.00</b>	<b>612-9776 - Facilities Projects - Modernization</b>
Project: 721-0000 - Casa Blanca - Undistributed				
Vendor	Encumbrance	Expenditure	Balance	Description
Linscott, Law & Greenspan Engineers	\$1,920.00	(\$1,920.00)	\$0.00	Engineering Consultant
<b>Project Total:</b>	<b>\$1,920.00</b>	<b>(\$1,920.00)</b>	<b>\$0.00</b>	<b>721-0000 - Casa Blanca - Undistributed</b>
Project: 721-9772 - Casa Blanca - New Construction				
Vendor	Encumbrance	Expenditure	Balance	Description
Albert A. Webb Associates	\$9,900.00	\$0.00	\$9,900.00	Site Survey
C Below, Inc.	\$38.00	\$0.00	\$38.00	Site Survey
California Department Of Ed	\$350.00	(\$350.00)	\$0.00	Plan Check Fees
FUSCOE Engineering Inc.	\$7,770.00	(\$2,770.00)	\$5,000.00	Engineering Services
Go Architects, Inc.	\$34,960.42	(\$34,960.42)	\$0.00	Architects Fees
Leighton Consulting, Inc	\$5,000.00	\$0.00	\$5,000.00	Site Survey
Oxbridge Development Inc.	\$2,062.50	\$0.00	\$2,062.50	Realtor
Tilden-Coil Constructors	\$127,604.73	(\$127,604.73)	\$0.00	Construction Management
<b>Project Total:</b>	<b>\$187,685.65</b>	<b>(\$165,685.15)</b>	<b>\$22,000.50</b>	<b>721-9772 - Casa Blanca - New Construction</b>
Project: 722-9772 - Eastside - New Construction				
Vendor	Encumbrance	Expenditure	Balance	Description
Epic Engineers	\$5,805.00	\$0.00	\$5,805.00	Engineering Costs
FirstCarbon Solutions	\$18,500.00	(\$18,500.00)	\$0.00	Environmental/CEQA
Glen Oaks Escrow	(\$699.00)	\$699.00	\$0.00	Escrow
Overland, Pacific & Cutler LLC	\$24,854.72	(\$13,675.76)	\$11,178.96	Property Management Services
PBK Architects, Inc.	\$237,500.00	(\$21,562.50)	\$215,937.50	Architect Fees

## MEASURE O 2020/2021 ENCUMBRANCES & EXPENDITURES

### Project: 722-9772 - Eastside - New Construction

Vendor	Encumbrance	Expenditure	Balance	Description
Placeworks	\$156,664.91	(\$35,299.94)	\$121,364.97	Environmental/CEQA
Southern California News Group	\$3,161.20	(\$3,161.20)	\$0.00	Advertising
Southwest Site Services	\$2,375.00	(\$1,310.27)	\$1,064.73	Fencing Costs
<b>Project Total:</b>	<b>\$448,161.83</b>	<b>(\$92,810.67)</b>	<b>\$355,351.16</b>	<b>722-9772 - Eastside - New Construction</b>

### Project: 722-9776 - Eastside - Modernization

Vendor	Encumbrance	Expenditure	Balance	Description
Interior Demolition, Inc.	\$70,590.00	(\$67,060.50)	\$3,529.50	Demolition Costs
<b>Project Total:</b>	<b>\$70,590.00</b>	<b>(\$67,060.50)</b>	<b>\$3,529.50</b>	<b>722-9776 - Eastside - Modernization</b>
<b>Grand Total:</b>	<b>\$68,790,847.20</b>	<b>(\$38,741,658.28)</b>	<b>\$30,049,188.92</b>	<b>Riverside Unified School District</b>