



Riverside Unified School District

Citizens' Bond Oversight Committee Report

(Financial Data as of 9/24/2021)

October 13, 2021 Meeting

Report by: 
KeyAnalytics

3380 14th Street | Riverside, CA 92501
(951) 788-7135 www.riversideunified.org

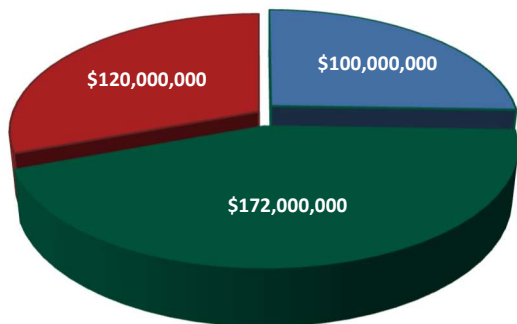


Committee Members

- ✓ Art Alcaraz
- ✓ David Bristow
- ✓ Martin De Campo
- ✓ Amanda DeLao
- ✓ Tom Evans
- ✓ Bob Garcia
- ✓ Tina Grande-Field
- ✓ Diane Kwasman
- ✓ Lara E. Martin
- ✓ Keith Nelson
- ✓ Marilyn Robinson
- ✓ Sarah Simpson
- ✓ Terry Walling

(CBOC Members as of July 2021)

Measure O Authorization



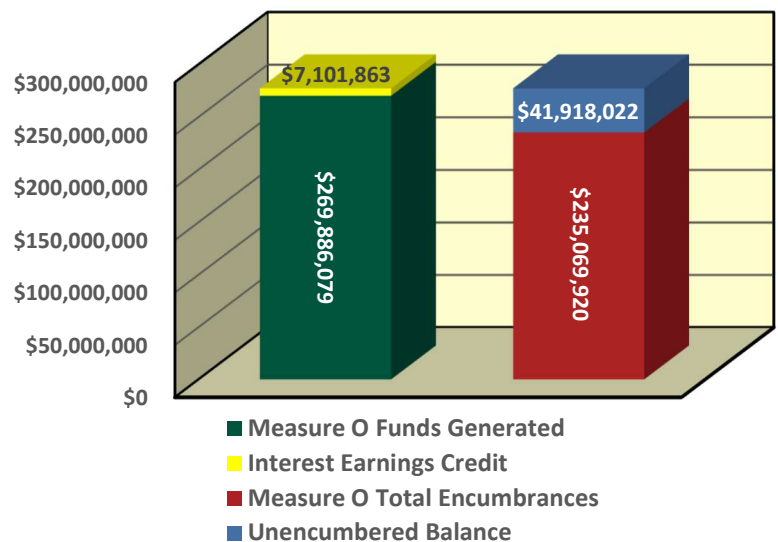
- G.O. Bonds Election of 2016, 2017 (Series A)
- G.O. Bonds Election of 2016, 2019 (Series B)
- Remaining Measure O Authorization - Pending

Measure O Overview

On November 8, 2016, the voters of the Riverside Unified School District approved Measure O General Obligation Bonds (the “Bonds”) with a 70% approval rate. Measure O will generate \$392 million dollars over the next 10 to 15 years to improve and build new capital facilities in Riverside Unified.

The Bonds will be used to repair and upgrade District aging school infrastructure, classrooms and buildings, build new schools, modernize school facilities with 21st century technology, improve access for students with disabilities, provide classroom and labs for career and technical education classes, improve school safety by modernizing security systems, retrofitting buildings to be earthquake proof, and upgrading emergency communications.

Measure O Total Revenue = \$276,987,942



Measure O Project Status Updates



Jackson Elementary School

Measure O Campus Improvements

Project Description

Jackson Elementary School was built in 1959. Under Measure O, the school will receive construction of a new 2-story classroom building with 8 standard classrooms, staff and student restrooms, and custodial areas, removal of 8 existing portables, new fencing, new parking lot and drop off areas, 35 standard stalls and 2 HC stalls, renovation of 6 existing kindergarten classrooms, new kindergarten play area that includes new landscaping, shade trees, and new playground equipment, renovation of existing classroom buildings and library, and site work including the removal and replacement of existing damaged sewer lines, new underground infrastructure for the new building, ADA upgrades, and relocation of Head Start portable classroom, new interior restroom and finishes, new play equipment, landscaping & hard-scape.

Project Group:	Group B
Architect:	WLC Architects
DSA Status:	Approved on August 28, 2019
Bidding & Award:	Spring 2020
Construction:	April 2020 to February 2022
Project Budget:	\$22,117,380

Project Status

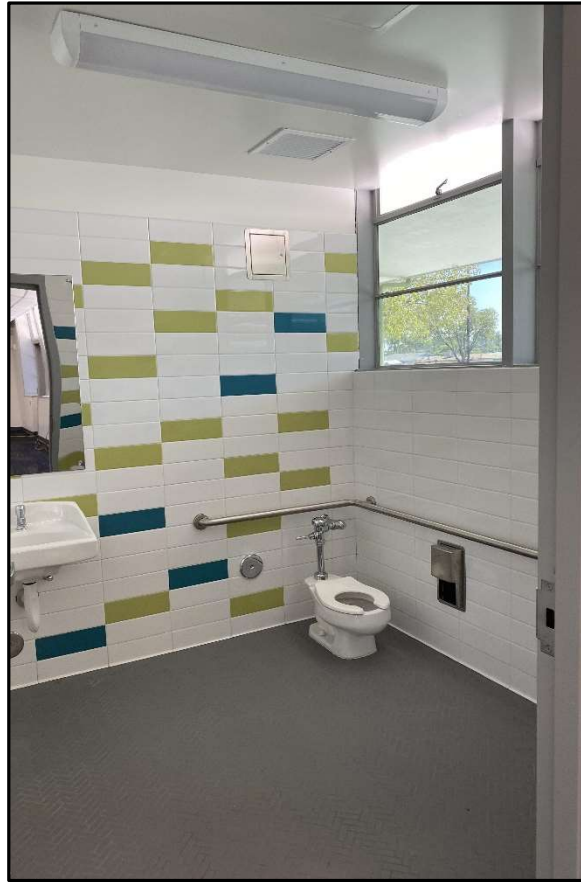
- ✓ Buildings F, G, M, N, D, E, C, & H - 100% Complete and turned over to the site
- ✓ Head Start Portable Classroom - 99% Complete and turned over to the site - Pending some punch list repair items
- ✓ New staff parking - 99% Complete and turned over to the site - Pending some punch list repair items
- ✓ New lunch shelter - 99% Complete and turned over to the site - Pending some punch list repair items
- ✓ Building B (classrooms 4, 5 & 6) - 99% Complete - Move-in was on 7-30-21 - Pending punch list repair items
- ✓ Building A (classrooms K1, K2 & K3) - 99% Complete - Move-in scheduled on 10-1-21 - Pending punch list repair items
- ✓ Head Start Play Area - 95% Complete - Pending punch list repair items and certification
- ✓ Kindergarten Play Area - 60% Complete - Ongoing hardscape work, play structure installation and landscaping
- ✓ New 2-Story Building J - 70% complete - Ongoing stucco work - Scheduled to complete December 2021 - Move-in early January 2022

Jackson Elementary School

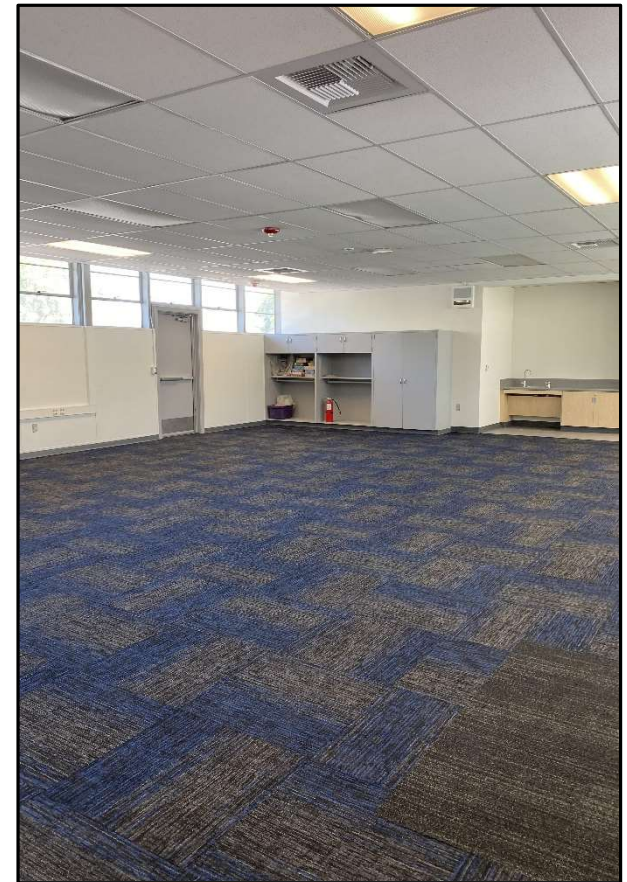
Construction Progress Pictures



Building A – K3 Workroom



Building A Classroom K1 Restroom



Building A Classroom K1

Jackson Elementary School

Construction Progress Pictures



Building A – K2 Workroom



Building A Classroom K3 Casework Wall



Kindergarten Play Area

Jackson Elementary School

Construction Progress Pictures



Building A



Building J Stucco Scratch Coat Installation



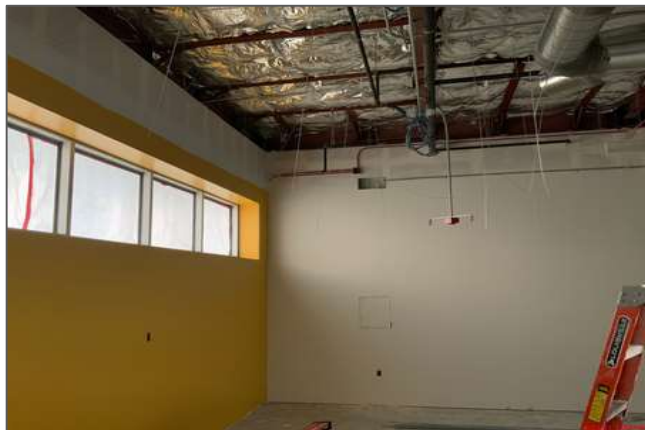
Head Start Play Area

Jackson Elementary School

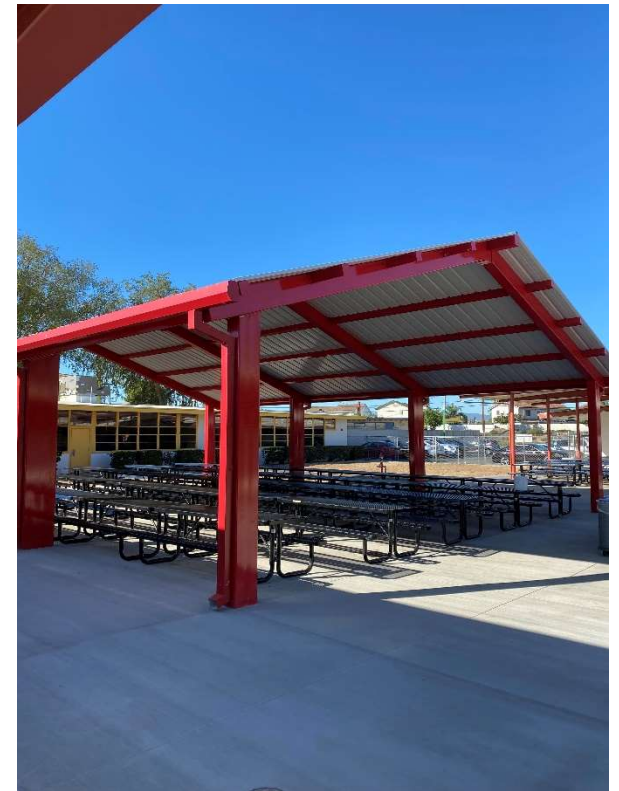
Construction Progress Pictures



New 2-Story Classroom Building J



Interior T-bar & HVAC Ductwork Installation



New Lunch Shelter

Jackson Elementary School

Project Rendering



Jackson Elementary School

Existing Site Plan



Jackson Elementary School

New Site Plan



APPROVED ACTIONS OF PRIORITIES

- **Construction of New 2-Story Classroom Building**
 - 8 Classrooms, restroom facilities, and support spaces
- **Construction of New Shade Structure**
- **Construction of New Staff Parking Lot and Bus Drop-off Area**
- **Reconfiguration of Existing Bldg H to Kindergarten Classroom Bldg**
- **Minor Campus-Wide Modernization at All Existing Permanent Buildings**
 - Replace PA system
 - Replace low voltage conduit and cable
 - Replace fire alarm system
 - Replace roofing
 - Replace HVAC rooftop units, ductwork, and controls
 - Replace exterior light fixtures
 - Upgrade restroom facilities
- **Minor Campus-Wide Modernization at All Existing Permanent Portable Classrooms**
 - Replace PA system
 - Replace low voltage conduit and cable
 - Replace fire alarm system
 - Replace exterior lighting fixtures
 - Replace handrails/ ramp slopes
- **Head Start Portable Classroom**
- **DF** **Campus-Wide Drinking Fountain Replacement**
- **Site Improvements**
 - Improve hard and soft landscape at kindergarten and upper grade playground areas
 - Provide new playground equipment/apparatus at kindergarten and upper grade playground areas
 - Provide new fencing at school front of kinder classroom buildings
 - Replace portions of campus fencing
 - Replace concrete walkway along POT

Magnolia Elementary School

Measure O Campus Improvements

Project Description

Magnolia Elementary School is one of the oldest schools in the District, built in 1898. Under Measure O, the school will receive construction of 2 new single-story classroom buildings with 10 standard classrooms, student restrooms, and a staff restroom, removal of 10 existing portable classrooms from the site at the end of the project, new kindergarten play area, new drop-off area off of Maplewood Place, new flooring in cafeteria, and related site work.

Project Group:	Group C
Architect:	ATI Architects
DSA Status:	Approved on April 11, 2019
Bidding & Award:	February to May 2020
Construction:	Completion – November 2021
Project Budget:	\$12,616,082

Project Status

Interim Housing

- ✓ Demolition completed

New Kinder Play Area

- ✓ Punch list in progress

New Drop Off Loop

- ✓ Punch list in progress

Exterior Site Work

- ✓ Punch list in progress
- ✓ Added landscaping completed

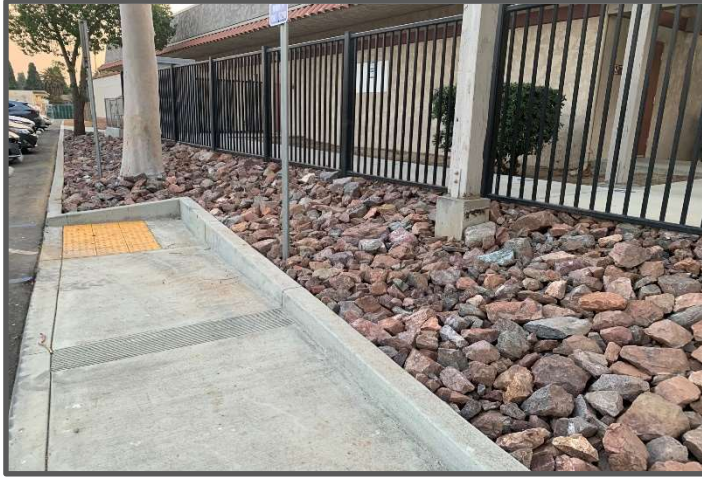
Magnolia Elementary School

Construction Progress Pictures



Magnolia Elementary School

Construction Progress Pictures



Magnolia Elementary School

Project Rendering



Magnolia Elementary School

Existing Site Plan



Magnolia Elementary School

New Site Plan



NEW AND MODERNIZATION

- | | |
|---|------------------------------|
| 1 | ADMINISTRATION |
| 2 | CLASSROOMS |
| 3 | LIBRARY / MEDIA CENTER |
| 4 | AUDITORIUM / MPR / CAFETERIA |
| 5 | AUDITORIUM KITCHEN |

PRIORITY # DESCRIPTION

- | | |
|---|--|
| 1 | REPLACE 10 PORTABLES WITH NEW SINGLE STORY BUILDINGS |
| 2 | DROP OFF/PICK UP AREA |
| 3 | NEW KINDER PLAY AREA |
| 4 | HARDSCAPE / FLOOR DRAINAGE CONDITIONS |
| 5 | INTERIM HOUSING (PORTABLE CLASSROOMS AND PARKING AREA) |

ADD ALTERNATE

- | | |
|---|--|
| 6 | AUDITORIUM / MULTI-PURPOSE MINOR REMODEL |
| 7 | HVAC REPLACEMENT FOR BLDG'S A, K, & M |

Adams Elementary School

Measure O Campus Improvements

Project Description

Adams Elementary School was built in 1962 on a 7.6 acre site. Under Measure O, the school will receive construction of a new single-story 5 Kindergarten classroom building, removal of 5 existing portable classrooms from the site at the end of the project, new kindergarten play area that includes new landscaping, shades trees, and playground equipment, new decomposed granite walking path area with new landscape and irrigation, new drop-off area and parking lot off of Adams Street that includes 22 standard parking spaces and 2 ADA parking spaces, and related site work.

Project Group:	Group C
Architect:	LPA Architects
DSA Status:	Approved on July 9, 2019
Bidding & Award:	January 2020 to March 2020
Construction:	Completion – November 2021
Project Budget:	\$13,995,922

Project Status

- ✓ In punch list. Notices of completion to be Board approved in November

New Kinder Building

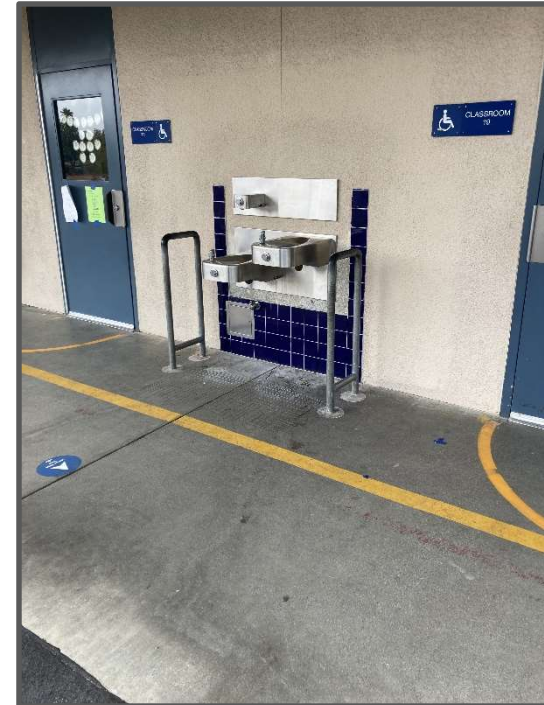
- ✓ Completed

Added Landscaping

- ✓ Irrigation is completed
- ✓ Hydroseeding is completed
- ✓ New property wall and fencing are completed

Adams Elementary School

Construction Progress Pictures



Adams Elementary School

Construction Progress Pictures



Adams Elementary School

Project Rendering



Adams Elementary School

Existing Site Plan



Adams Elementary School

New Site Plan



BUILDINGS

- NEW KINDER BUILDING
- LOW-LEVEL RENO. (3) PORTABLES
- (5) REMOVE EXISTING PORTABLES
- (3) RELOCATE EXISTING PORTABLES

- (1) DEMOLISH STORAGE UNIT
- TOTAL BUILDING RENOVATION**

SITE

- NEW DROP OFF
- NEW PARKING
- HARDSCAPE IMPROVEMENTS
- EXTERIOR FENCE IMPROVEMENTS
- NEW FENCE
- NEW KINDER PLAY GROUND
- NEW STORM WATER TREATMENT
- SAND PIT PLAY AREA IMPROVEMENTS
- SITE UTILITIES IMPROVEMENTS
- TOTAL SITE IMPROVEMENTS**

Sunshine Early Childhood Center

Measure O Campus Improvements

Project Description

Sunshine Early Childhood Center was built in 1947. The site currently has 3 portable classroom buildings. The site also houses the California Children Services (CCS), a county program that services students with special needs. Under Measure O, the site will receive a new portable building to relocate the CCS which will relieve 3,000+ square feet for students of Sunshine. The site will also receive a new play structure, a light modernization, and a front campus facelift.

Project Group:	Group B
Architect:	GO Architects
DSA Status:	Approved on February 19, 2019
Bidding & Award:	February to May 2020
Construction:	May 2020 to December 13, 2021
Project Budget:	\$10,800,000

Project Status

This project is expected to be completed in December

Building A (classrooms 4, 5 & 6)

- ✓ Completed = 9/7/21
- ✓ Move in completed = 9/8/21
- ✓ Punch list in progress

Building A (Final phase)

- ✓ Demolition completed
- ✓ Rough MEP in progress

Building B (Administration)

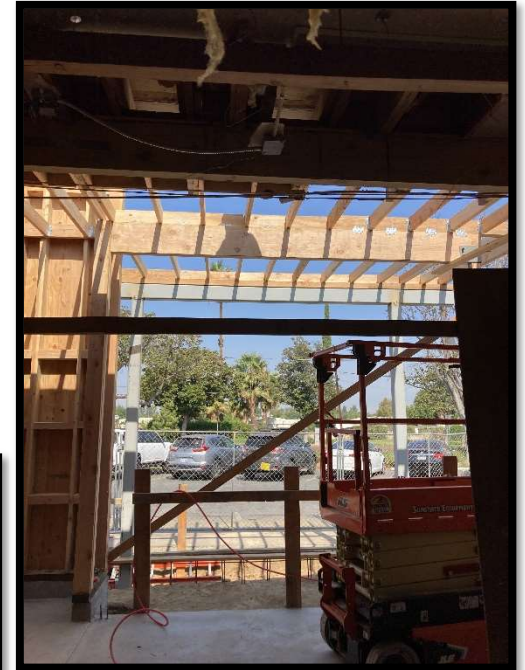
- ✓ Demolition completed
- ✓ Rough MEP in progress
- ✓ Interior and exterior walls in progress
- ✓ MEP rough in in progress
- ✓ New entry area in progress

Electrical upgrade

- ✓ Conduit installations completed
- ✓ Power transfer to new equipment scheduled for 11/22/21

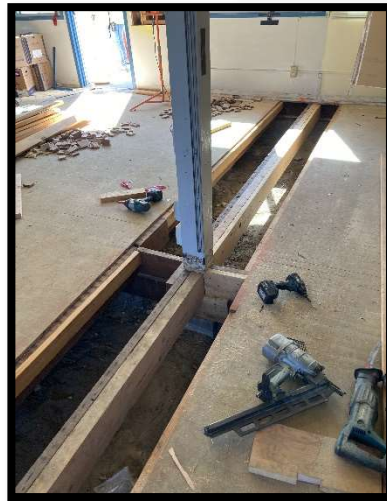
Sunshine Early Childhood Center

Construction Progress Pictures



Sunshine Early Childhood Center

Construction Progress Pictures



Sunshine Early Childhood Center

Project Renderings



Sunshine Early Childhood Center

Project Rendering



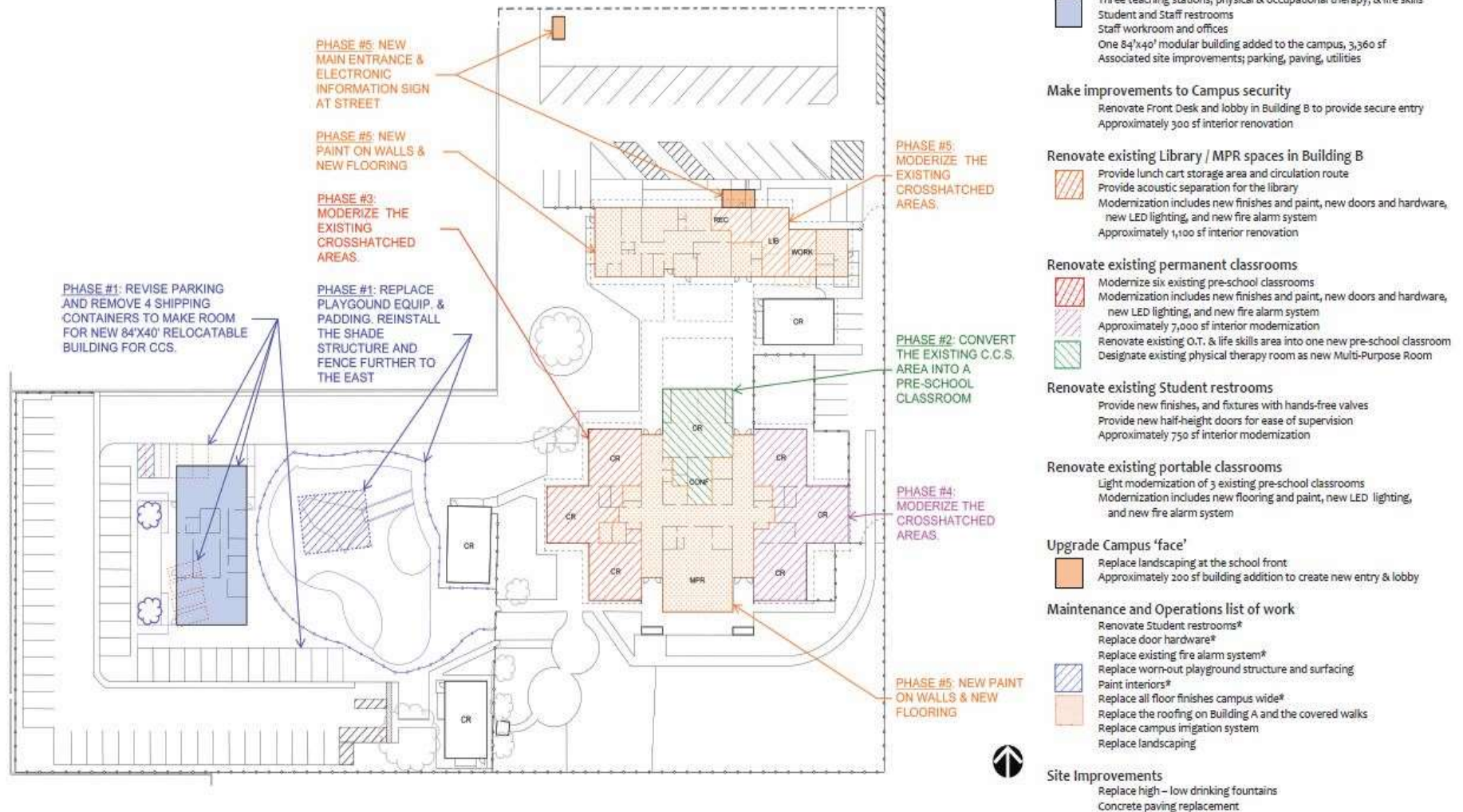
Sunshine Early Childhood Center

Existing Site plan



Sunshine Early Childhood Center

New Site Plan



Poly High School

Measure O Campus Improvements

Project Description

Poly High School was built in 1965. The school is on 40 acres of land. Under Measure O, the scope being proposed are ADA upgrades to the main campus and a new gymnasium. The ADA upgrades to the campus began in May of 2020 and the auxiliary gym will follow, going into construction in 2021.

Project Group:	Group B
Architect:	WLC Architects
DSA Submittal:	March 30, 2019
Phase I Construction:	May 2020 to September 2021
Poly Gym Bid/Award:	January 1, 2021
Gym Construction:	March 2021
Project Budget:	\$24,039,894

Project Status

The Quad

- ✓ This portion of project scope has been completed
- ✓ Notices of Completion have been filed

Poly New Auxiliary Gym

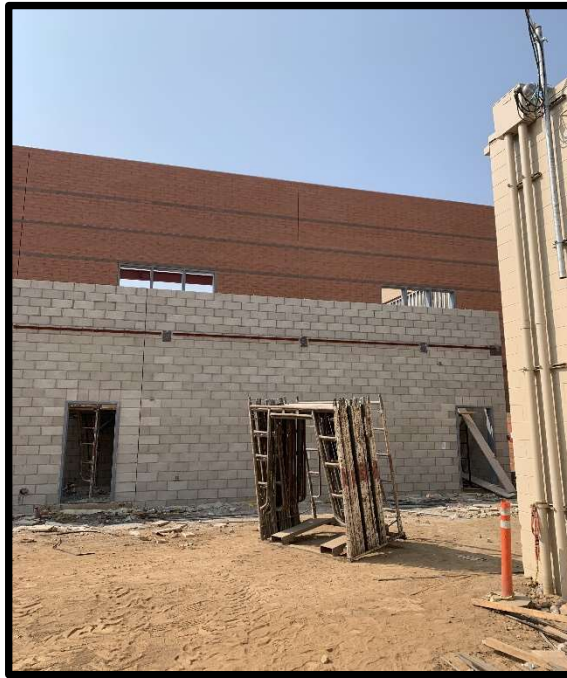
Block work is completed
Roof structure steel installed
Steel decking on site will start soon
Project is approximately 45% complete

Poly High School

Gym Construction Progress Pictures



Basketball Courts



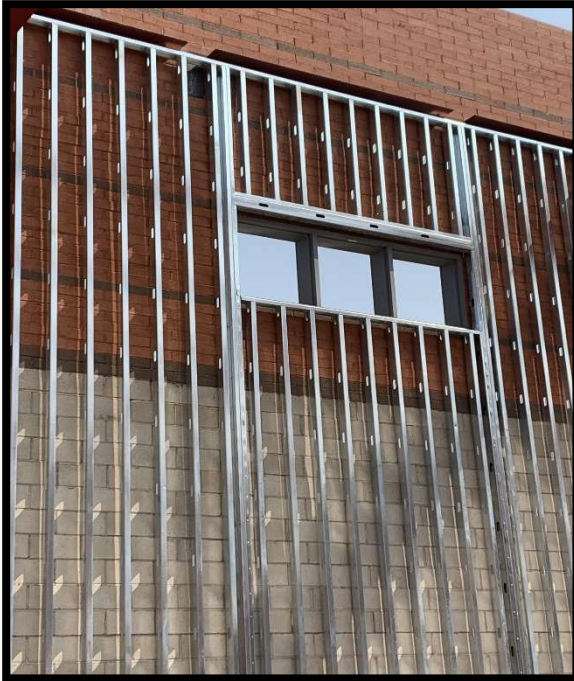
Exterior Rooms



Gym Exterior

Poly High School

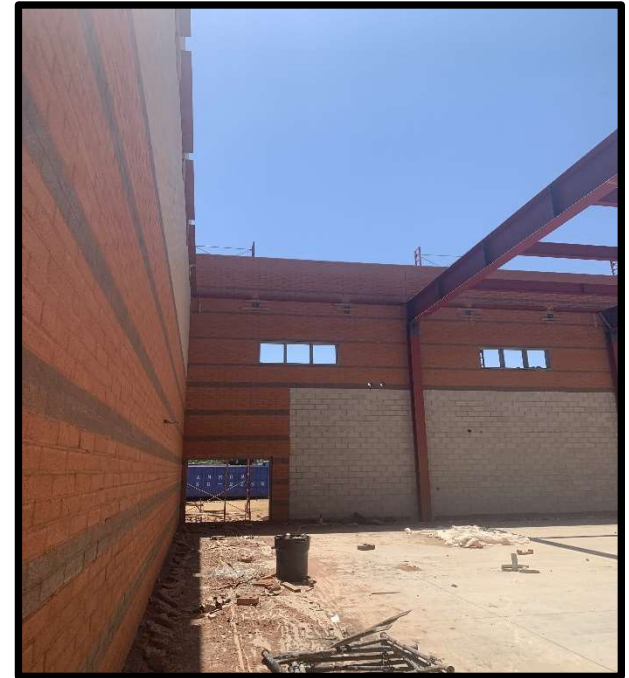
Gym Construction Progress Pictures



Gym Framing



Gym Structure and Walls



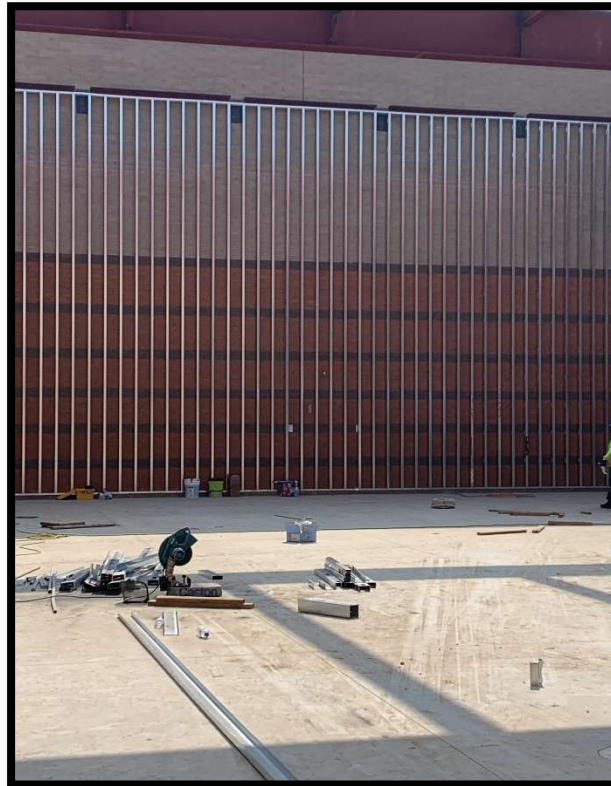
Gym

Poly High School

Gym Construction Progress Pictures



Gym



Interior Furring



Steel Structure

Poly High School

New Entry Project Rendering



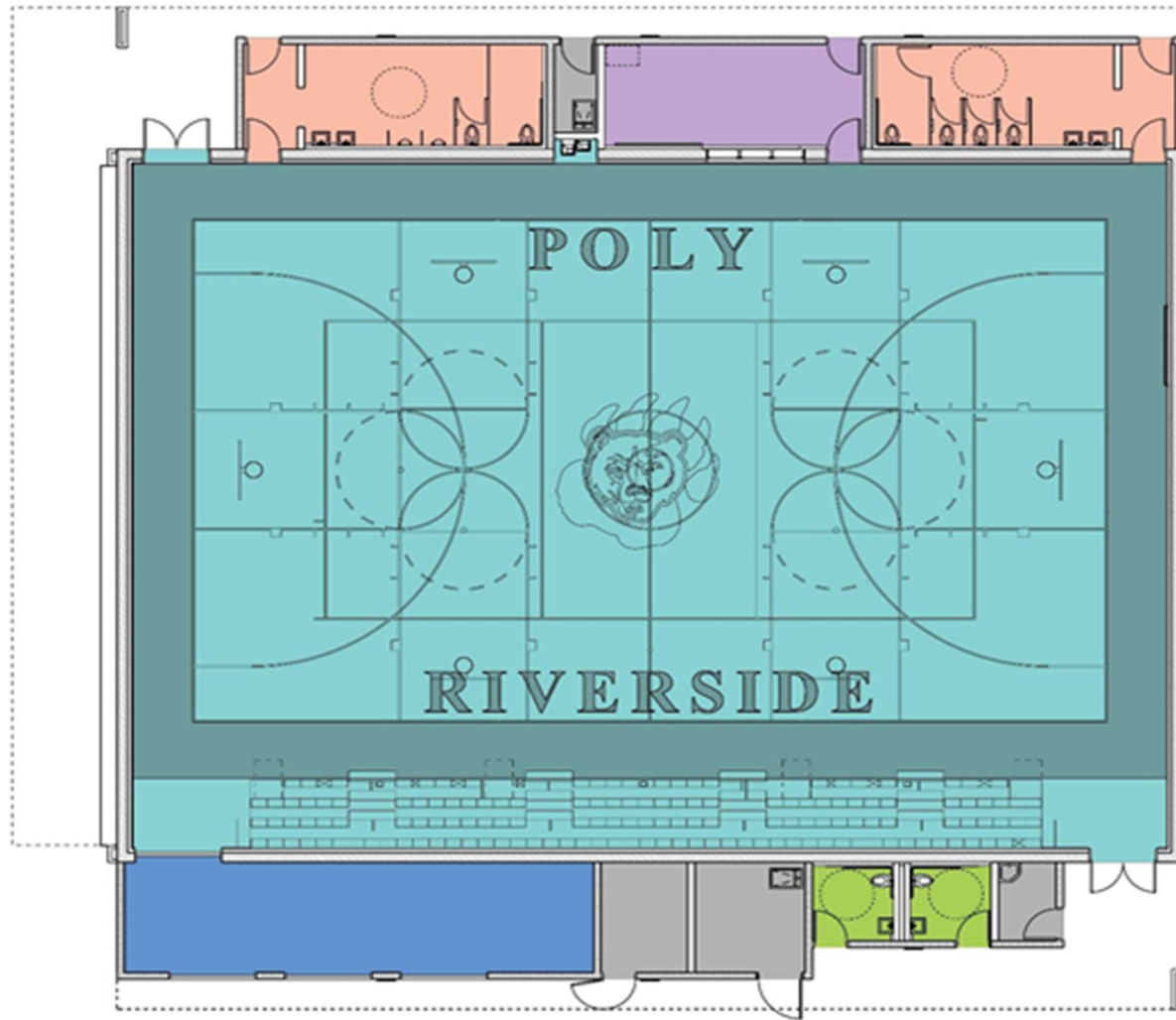
Poly High School

Quad Project Rendering



Poly High School

Poly Gym Rendering



Poly High School

Existing Site Plan



Arlington High School

Measure O Campus Improvements

Project Description

Arlington High School was built in 1973 on a 47 acres site. The site currently has 21 portable classroom buildings. Under Measure O, the project will receive a new eight science classroom building, upgrades to media arts, courtyard & site enhancements, curb appeal, moderate modernization, renovation of existing pool, new auxiliary gym, and stadium expansion.

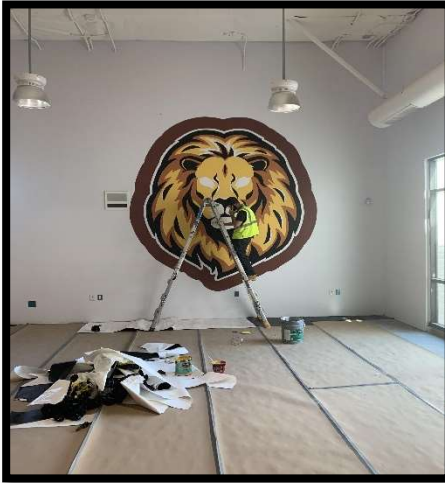
Project Group:	Group C
Architect:	Ruhnau Clarke Architects
DSA Status:	Approved
Bidding & Award:	Fall 2020
Construction:	December 2020 – June 2022
Project Budget:	\$26,302,640

Project Status

- ✓ Building J remodel at 90%. Punch list items in progress
- ✓ Building Q Biomed finishes ongoing
- ✓ Floor prep has started
- ✓ Casework has started
- ✓ Interior windows and doors are ongoing
- ✓ Building R Gym floor prep is ongoing
- ✓ Sports equipment basketball backstops installed
- ✓ A/C units have been set and are scheduled for start up
- ✓ Exterior finishes have been completed
- ✓ Interior restroom fixture installations ongoing
- ✓ Bleachers are at 85% complete. Need to complete installation of the pressbox
- ✓ Ticket booth footings have been poured and blockwork will follow

Arlington High School

Construction Progress Pictures



School Logo



Bleacher Extension



Building J Casework



Pool Backfill



Building J Finishes



Aux Gym Exterior Finishes



Media Arts



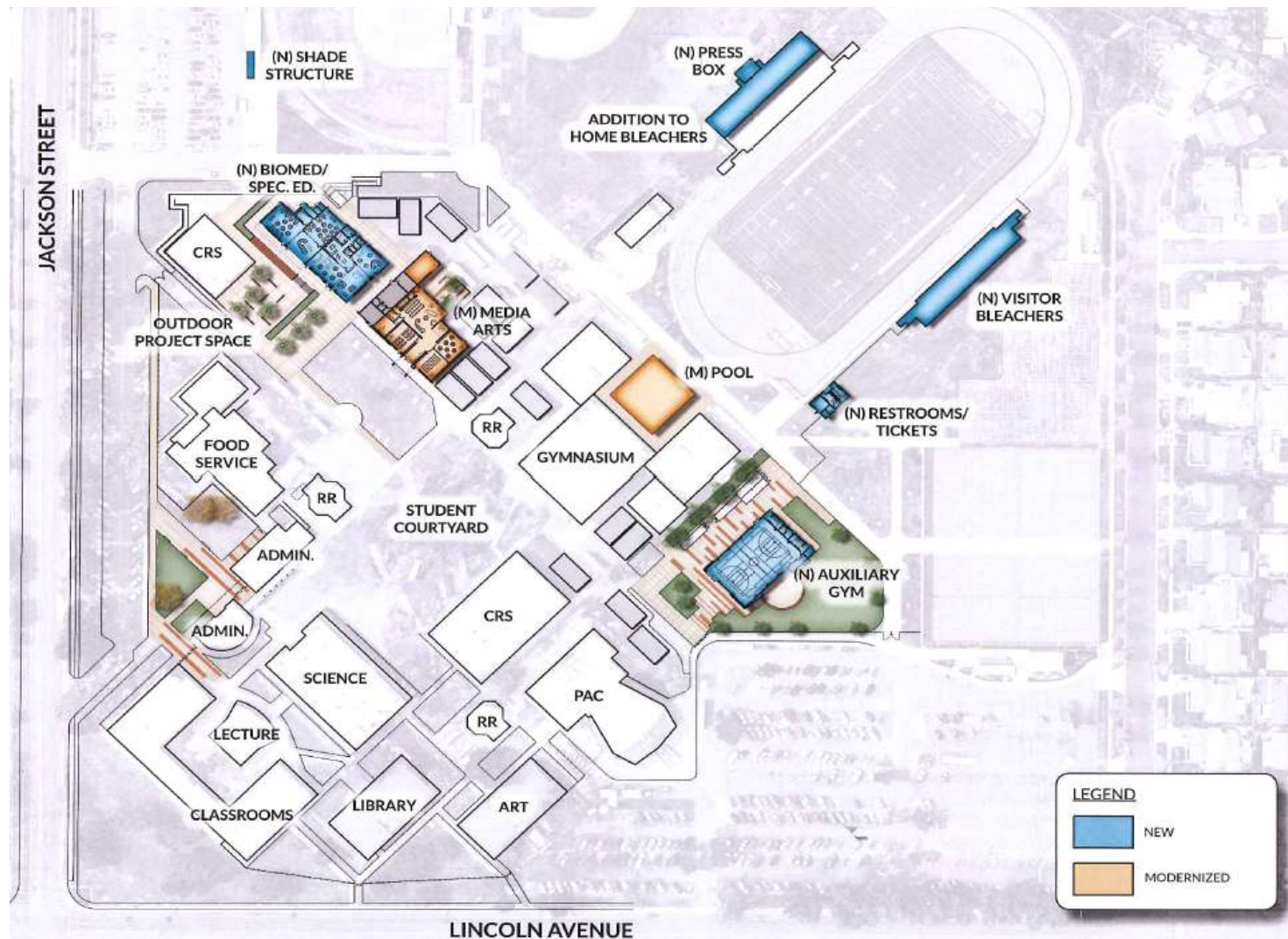
Sound Booth

Arlington High School

Existing Site Plan



New Site Plan



Alcott Elementary School

Measure O Campus Improvements

Project Description

Alcott Elementary School was built in 1961. Under Measure O, the school Alcott Elementary School will receive improvements:

Existing Buildings: new interior and exterior painting, new ceiling tile and t-bar, new lighting, new HVAC, casework, and carpet, and restroom ADA upgrades.

Site Work: Removal of eleven (11) classroom portables, grading, new hard court play yard area, turf, ADA Upgrades, new landscape and irrigation throughout the campus, new gate, new fencing, and new domestic water, sewer, storm drain, and gas line for new building.

New Classroom Building: Six (6) general education classrooms and four (4) kindergarten classrooms with restrooms and new Kinder playground, play equipment and fencing.

Project Group: Group B
Architect: DLR Architects
DSA Submittal: April 2, 2019
Construction: May 2021 to September 2022
Project Budget: \$23,073,713

Project Status

- ✓ Construction started on 5-3-21
- ✓ Site work and landscaping - 70% complete - Pending punch list repair items
- ✓ Interim housing & permanent portable classrooms - 99% Complete and turned over to the site - Pending punch list repair items
- ✓ Modernization Buildings A, B, C, I & J - 99% Complete and turned over to the site - Pending punch list repair items
- ✓ Modernization Buildings I & J - 99% Complete - Move-in scheduled on 10-2-21 - Pending punch list repair items
- ✓ Modernization building D - Scheduled to start in October 2021
- ✓ Modernization buildings E & H - Scheduled to start in January 2022
- ✓ Building K New 2-Story classroom building construction - Grading & foundation work is complete - Floor sections are on site - Ongoing infrastructure work

Alcott Elementary School

Construction Progress Pictures



Building C



Building I

Alcott Elementary School

Construction Progress Pictures



Building K Concrete Foundation



New 2-Story Classroom – Building K



Interim Housing



New 2-Story Classroom Building K



New Decorative Fencing at MPR



New Planter & Grass Area



Permanent Portable Classrooms

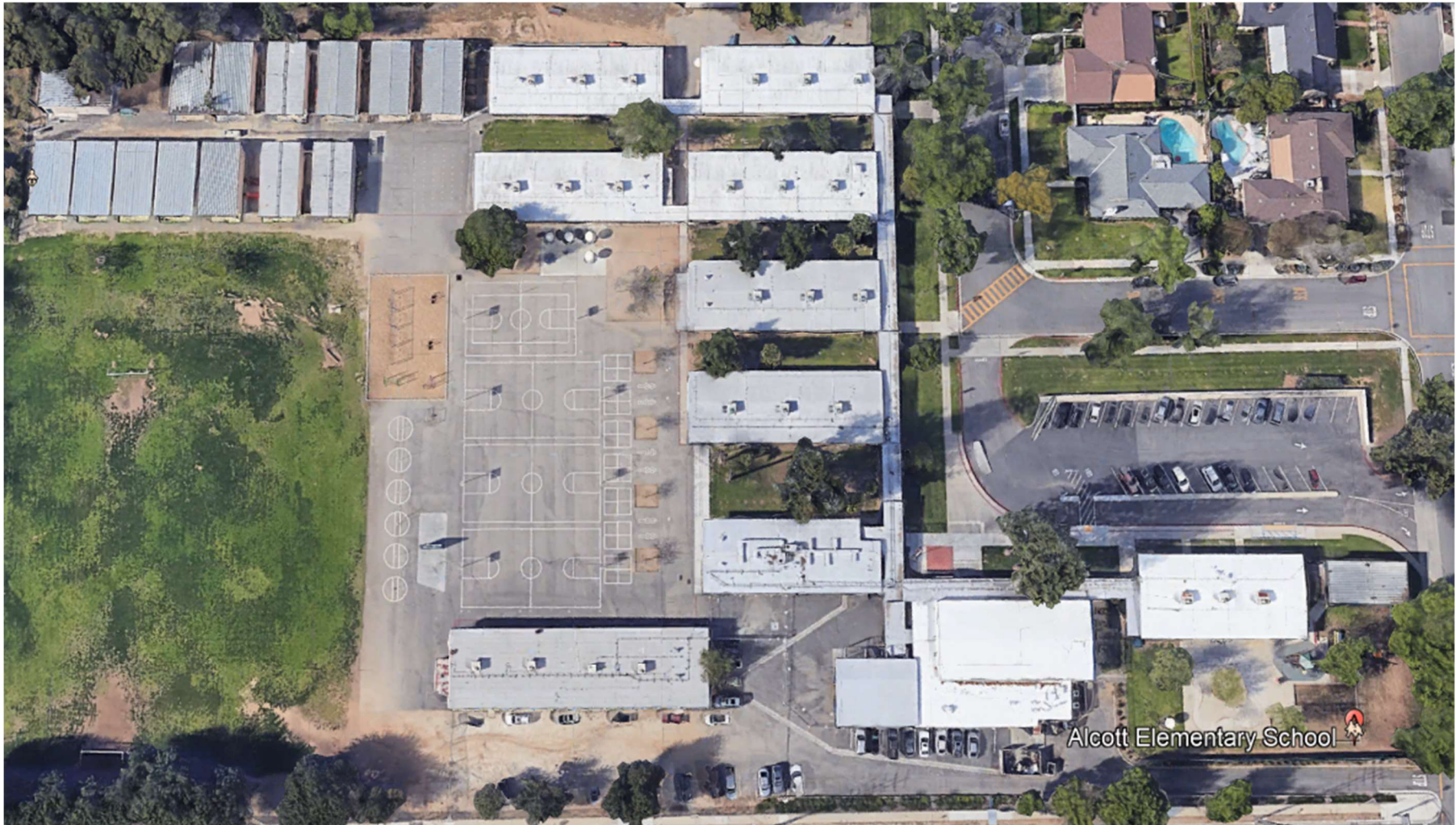
Alcott Elementary School

Exterior Rendering



Alcott Elementary School

Existing Site Plan



Alcott Elementary School

New Site Plan



Monroe Elementary School

Measure O Campus Improvements

Project Description

Monroe Elementary School was built in 1955. Under Measure O, Monroe Elementary School will receive a new 1-story classroom building with 5 kinder classrooms, modernization of existing buildings including fire alarm, HVAC, plumbing, roof, door hardware, paint, new carpet, casework, ADA improvements, new school frontage, replacing kinder equipment, updates to irrigation and drainage systems and two new restroom facilities. Site work includes new playground grass, new water, sewer, gas lines, new parking and bus drop-off and lunch shelter.

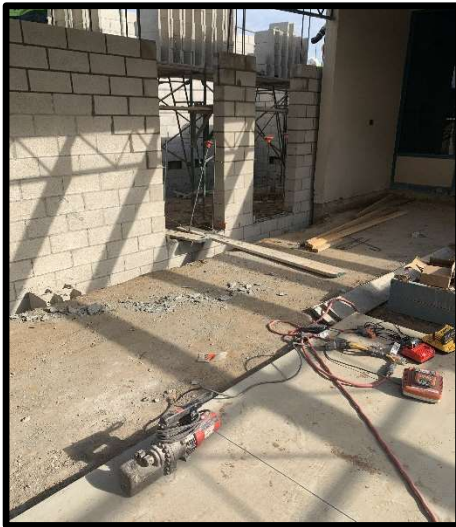
Project Group:	Group B
Architect:	HMC Architects
DSA Submittal:	September 24, 2019
Bidding & Award:	February to May 2021
Construction:	June 2021 to August 2022
Project Budget:	\$23,006,854

Project Status

- ✓ Building A remodel is ongoing
- ✓ interior paint and finishes have started
- ✓ T-bar being installed
- ✓ exterior of building is being painted
- ✓ Re roof has been completed
- ✓ New kinder wing footings have been poured
- ✓ Slab on grade to follow
- ✓ Grading and over excavation has started for the new parking and bus drop off area

Monroe Elementary School

Construction Progress Pictures



New Restroom



Building H Utilities



Building H Footing



Building A Remodel



Building A New Restroom



Monroe Elementary School

Project Rendering



Monroe Elementary School

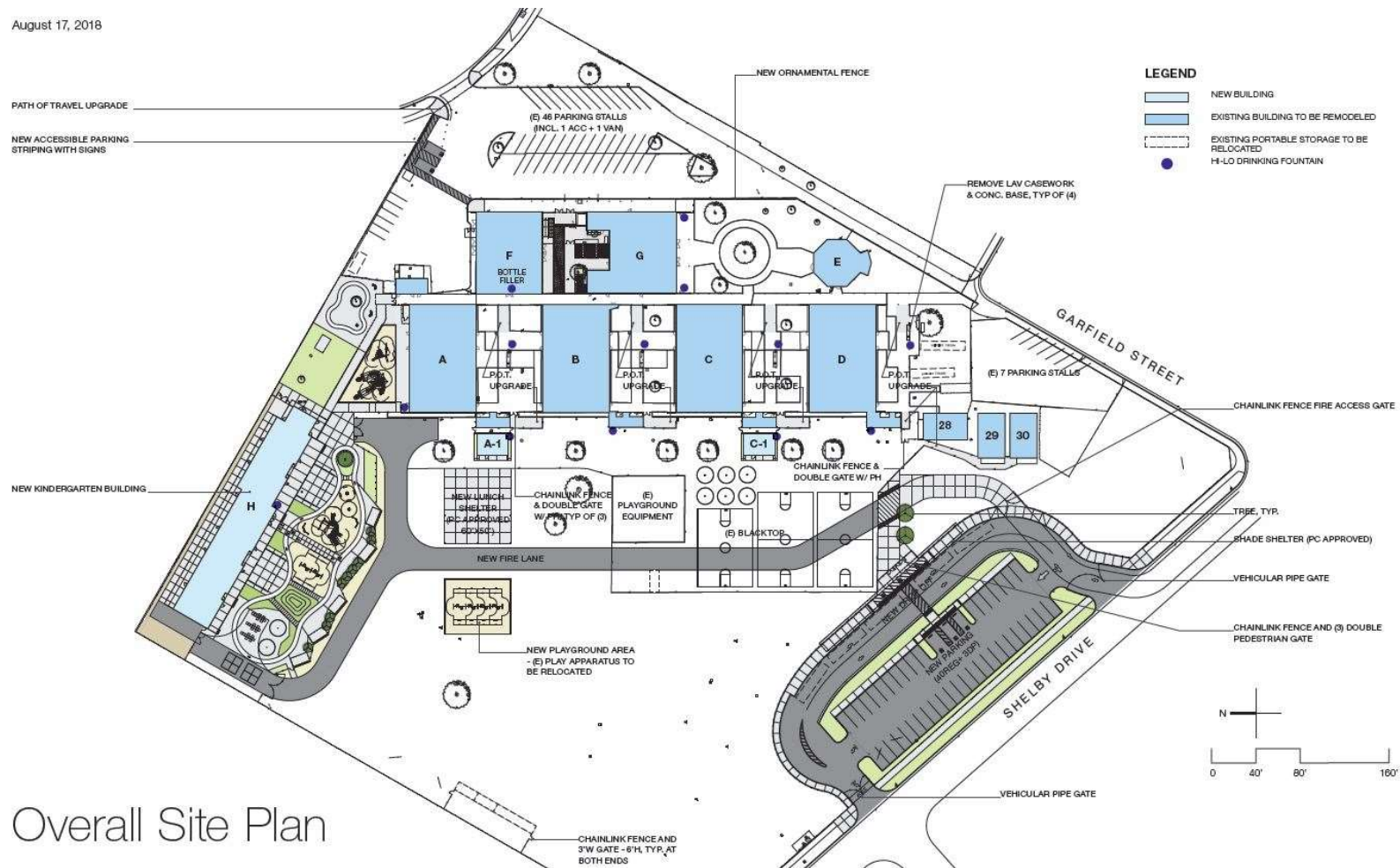
Existing Site Plan



Monroe Elementary School

New Site Plan

August 17, 2018



Overall Site Plan

Fremont Elementary School

Measure O Campus Improvements

Project Description

Fremont Elementary School is one of the oldest schools in the District, built in 1917. Under Measure O, Fremont Elementary School will receive:

New Two-Story Building: Six general classrooms and six kinder classrooms with interior restrooms, new play equipment and surfacing, landscape, elevator, covered walkway, exterior restrooms and storage.

Site Work: Removal of four portables and demo existing building J, new kinder play yard, hard court play yard area, turf, ADA Upgrades, new visitor parking lot with (15) regular and (2) ADA accessible parking stalls, grading, Re-stripe and slurry existing parking lot etc., and domestic water, sewer, storm drain, gas, electrical power upgrades.

Existing Classroom Buildings and Administration: Exterior improvements & roofing and reconfigure administration, interior and exterior paint.

Project Group: Group C
Architect: Ruhnau Clarke Architects
DSA Status: **Approved** on June 28, 2019
Construction: May 2021 to September 2022
Project Budget: \$18,672,952

Project Status

- ✓ Construction started on 5-27-21
- ✓ Site demolition work - Building J, existing playground, existing landscaping and portable classrooms #29 & #30 - 99% Complete
- ✓ Sewer and storm drain easement relocation work - 99% Complete - Pending punch list repair items
- ✓ Soil import work - 80% Complete - Remaining soil import TBD
- ✓ Site work - Storm-water retention basin work - 60% Complete - Ongoing drain line infrastructure work
- ✓ Relocation of temporary irrigation pump work is 90% complete - Pending punch list repair items
- ✓ Buildings K1 (2-Story classroom building) & K2 (Single story classroom building) - Ongoing over excavation work and plumbing infrastructure work
- ✓ Portable classroom relocation R, S, T & U - Scheduled for Summer 2022
- ✓ Building M Administration office modifications - Scheduled for Summer 2022

Fremont Elementary School

Construction Progress Pictures



Building K2 Plumbing



Building K1 Plumbing



New Drain Retention Basin



Soil Import



Building K1 & K2 Plumbing

Fremont Elementary School

Before Construction Pictures



Location of the New 2-Story & Single-Story Building & New Visitor Parking



Portables #5 and #6 Demolition



Portables 1-4 Relocation Within the Site

Fremont Elementary School

Project Renderings



Fremont Elementary School

Existing Site Plan



Longfellow Elementary School

Measure O Campus Improvements

Project Description

Longfellow Elementary School was built in 1947. It faces logistical challenges due to its small foot print and no onsite parking. The site currently has 12 portable classroom buildings. The school is on 6 acres. Under Measure O, it will receive a new 6 kinder and 6 general education classroom building with new play area, new administration building and re-purposing of administration building, new parking lot, and modernization of existing buildings, MPR, and cafeteria.

Project Group:	Group C
Architect:	DLR Architects
DSA Status:	Approved
Bidding & Award:	Spring 2022
Construction:	June 2022 to August 2023
Project Budget:	\$22,273,777

Project Status

- ✓ Existing utilities disconnection completed
- ✓ HazMat abatement completed
- ✓ Demolition began 10/7/21

Longfellow Elementary School

Housing Demolition for Future Administration Building



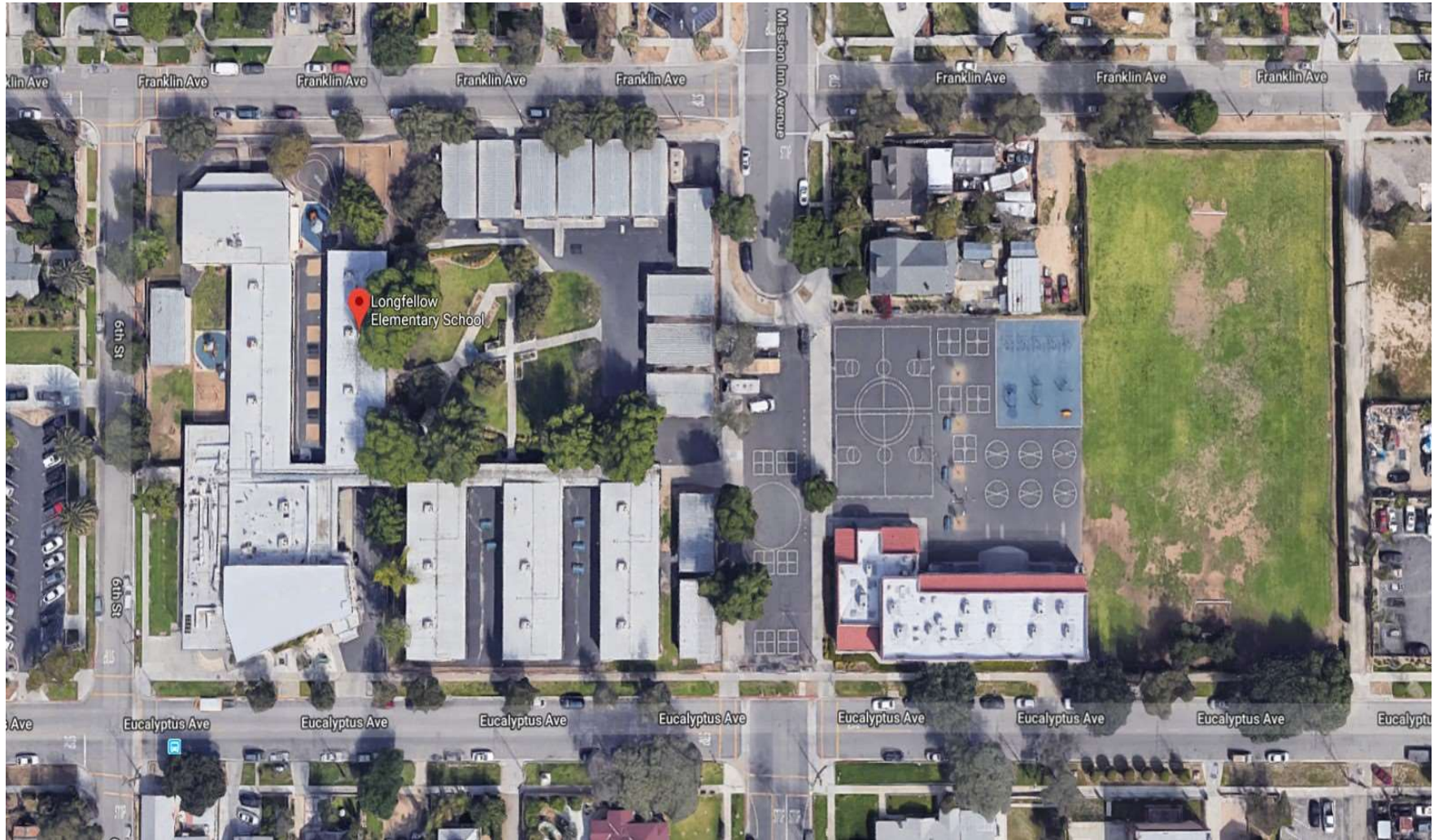
Longfellow Elementary School

Building Rendering



Longfellow Elementary School

Existing Site Plan



Longfellow Elementary School

New Site Plan



University Heights Middle School

Measure O Campus Improvements

Project Description

University Heights Middle School was built in 1979. The site currently has 19 portable classroom buildings. Under Measure O, the site will receive 7 new classrooms within its existing square footage, expansion of the music room, new finishes and relocation of existing library, ADA upgrades, new concrete running track, and fire lane extension, upgrade/repair kitchen utilities, landscaping and security fencing.

Project Group:	Group C
Architect:	GO Architects
DSA Status:	Approved on September 17, 2019
Bidding & Award:	Spring 2022
Construction:	June 2022 to August 2023
Project Budget:	\$7,440,131

Project Status

- ✓ The District has started to prepare for bidding in February of 2022

University Heights Middle School

Project Rendering



University Heights Middle School

Existing Site Plan



University Heights Middle School

New Site Plan



Paint & Flooring:
Exterior & interior paint at Buildings A & B
New flooring & wall base at Building A Halls
No work at Gymnasium & Lockers

Portable Removal:
Three portables removed & site restored

Portable, Light Modernization:
Sixteen portable classrooms & one portable restroom building to have exteriors painted

Light Modernization:
Eight Classrooms; new finishes & skylights
Reconfigure Lobby & Reception at Admin
MPR; new finishes & skylights, A/V System

Renovation / Reconfiguration:
Convert two Classrooms in B to new Library
Convert old Library in A to three new Classrooms & Circulation

Addition / New Classroom Construction:
Add four new infill Classrooms & Circulation
Expansion of Music Classroom & Support

Maintenance & Operations:
Fire Alarm System replacement Campus wide
Replace Landscaping & Irrigation at Campus front
Replace and of life HVAC units, fire units total
Replace MPR Audio / Visual System

Site Improvements:
Fire Lane restored & widened
Site Accessibility (ADA), new paving & parking repair
Treat storm-water runoff
New Fencing at West property line

John W. North High School

Measure O Campus Improvements

Project Description

John W. North High School was built in 1966 on a 43 acres site. The site currently has 28 portable classroom buildings. This Project is currently in the planning phase. The Design Team will be tasked to develop the scope of work during the 2020/21 school year. The scope of work under Measure O may include: replacement of portable buildings to permanent buildings, site enhancements, infrastructure upgrades, curb appeal, modernization, and site improvements.

Project Group:	Group E
Architect:	GO Architects
DSA Submittal:	To be Determined
Bidding & Award:	To be Determined
Project Budget:	\$26 Million

Project Status

- ✓ In-person Vision Design Committee (VDC) meeting #04 was held on 8-11-21 - Feedback on the committee proposed scope of work recommendations and cost analysis
- ✓ 8-18-21 - Operations & Facilities Planning Board Committee (OFPB) - Project update presentation was done by the architect for the OFPB committee review and comments
- ✓ 10-7-21 - Board of Education Meeting (BOE) - Proposed project will be presented to the BOE for approval
- ✓ North HS Alumni members - Site tour request - Next site tour is tentatively scheduled on 10-11-21
- ✓ Next Vision Design Committee meeting schedule – TBD

John W. North High School

Existing Site Plan



Casa Blanca Neighborhood School

Measure O Campus Improvements

Project Description

The proposed site is approximately 9.8 acres located on Lincoln Street. The school will service 750 TK-6 students in the Casa Blanca neighborhood. The new school will include ancillary/support buildings, outdoor learning /shared spaces, TK/K classrooms and play areas, 1-3 classrooms and play areas, Special Education, 4-6 play classrooms and play areas, staff/visitor parking, bus/parent drop off areas.

Group:	Expanded
Architect:	GO Architects
DSA Submittal:	To be Determined
Bidding & Award:	To be Determined
Project Budget:	\$37.5 Million

Project Status

- ✓ In-person Vision Design Committee(VDC) meeting #6 was held on 8-10-21 - Architect presented 3-modified learning village design concept options - Committee vote with the majority for option 1
- ✓ 8-18-21 - Operations & Facilities Planning Committee Meeting (OFPB) - Project update presentation was done by the architect for the OFPB committee review and comments
- ✓ 9-30-21 - In-person VDC meeting - Instructional programming input meeting
- ✓ 10-7-21 - Board of Education Meeting (BOE) - Proposed project was presented to the BOE for approval
- ✓ City of Riverside recommended a queuing analysis be done by District - Traffic engineer will be working on this analysis
- ✓ Educational Specification - Next meetings will be scheduled with Food Services, Technology & Transportation
- ✓ Next Vision Design Committee meeting schedule - TBD

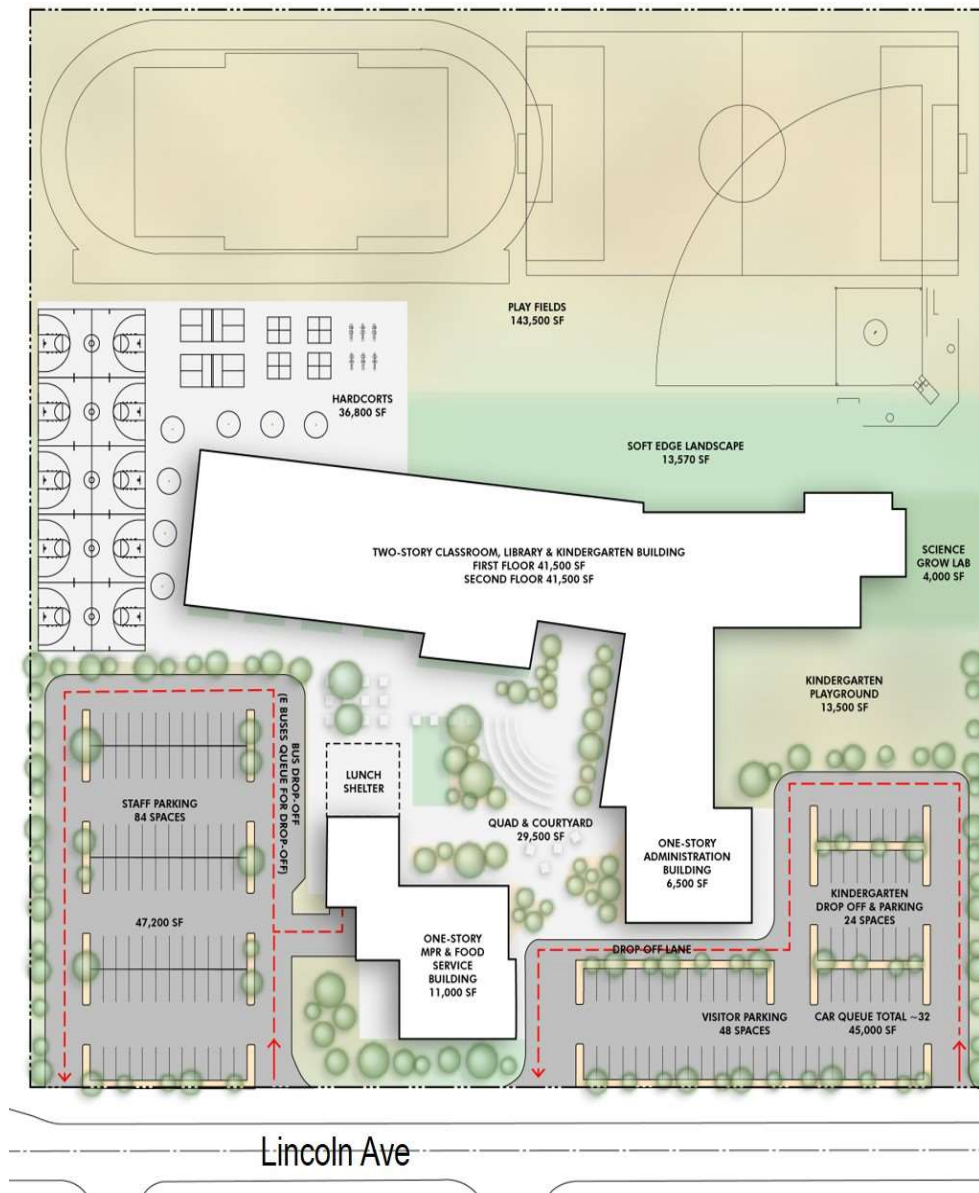
Casa Blanca Neighborhood School

Measure O Campus Improvements



Casa Blanca Neighborhood School

Conceptual Design Plan

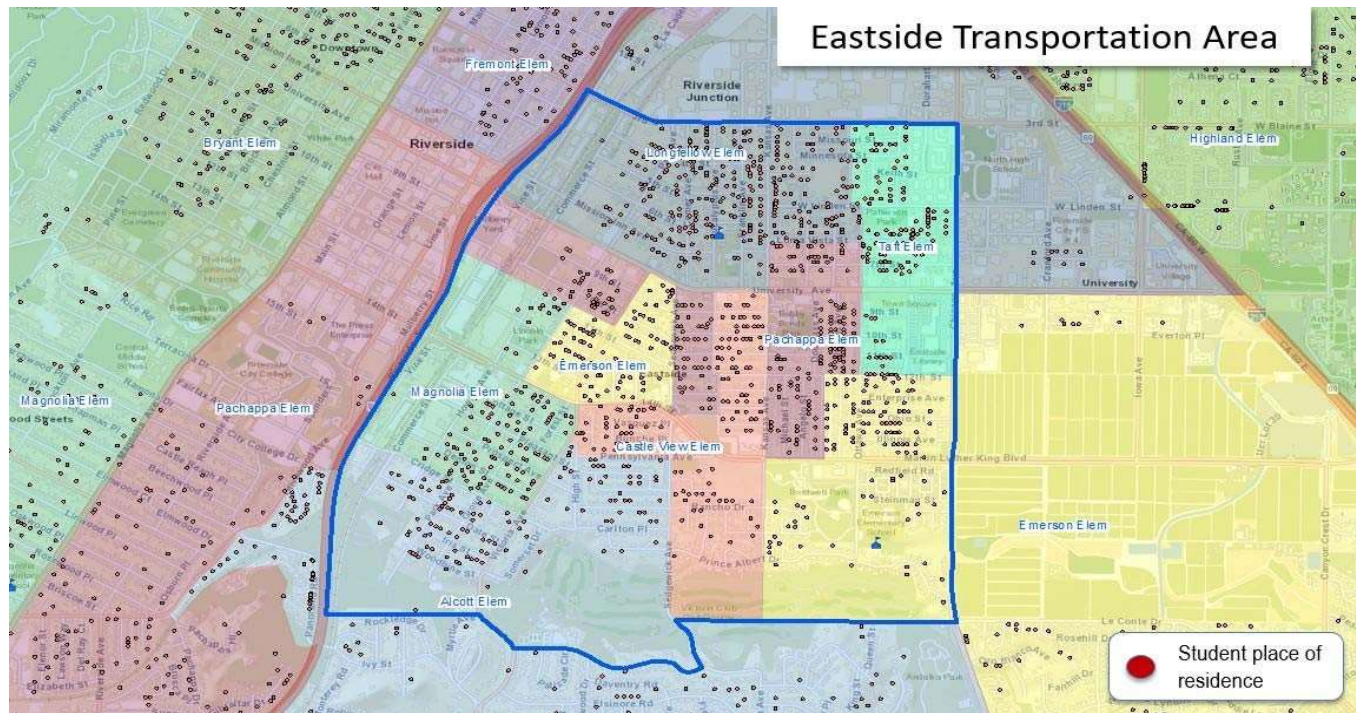


CONCEPTUAL CASA BLANCA SCHOOL

- 800 TK-6 Student Capacity
- 32 Classrooms
- MPR/Food Service Building
- Administration Building
- 2-Story Classroom Building
- Library and Kindergarten Building
- Hardscapes & Playgrounds
- Play Fields
- Drop-off & Parking Areas

Eastside Neighborhood School

Measure O Campus Improvements



Project Description

The District is exploring various properties within the Eastside neighborhood for a future elementary school. Three options are being considered under CEQA:

- Option 1: Lincoln school + B Lots, + C Lots, vacate Park Avenue
- Option 2: B Lots, C Lots, Vacation of Park Avenue, Lincoln Park Joint use
- Option 3: B Lots, C Lots, Vacate Park Avenue, Reconfigure Lincoln

Group: Expanded
Architect: PBK Architects
DSA Submittal: To be Determined
Bidding & Award: To be Determined
Project Budget: \$37.5 Million

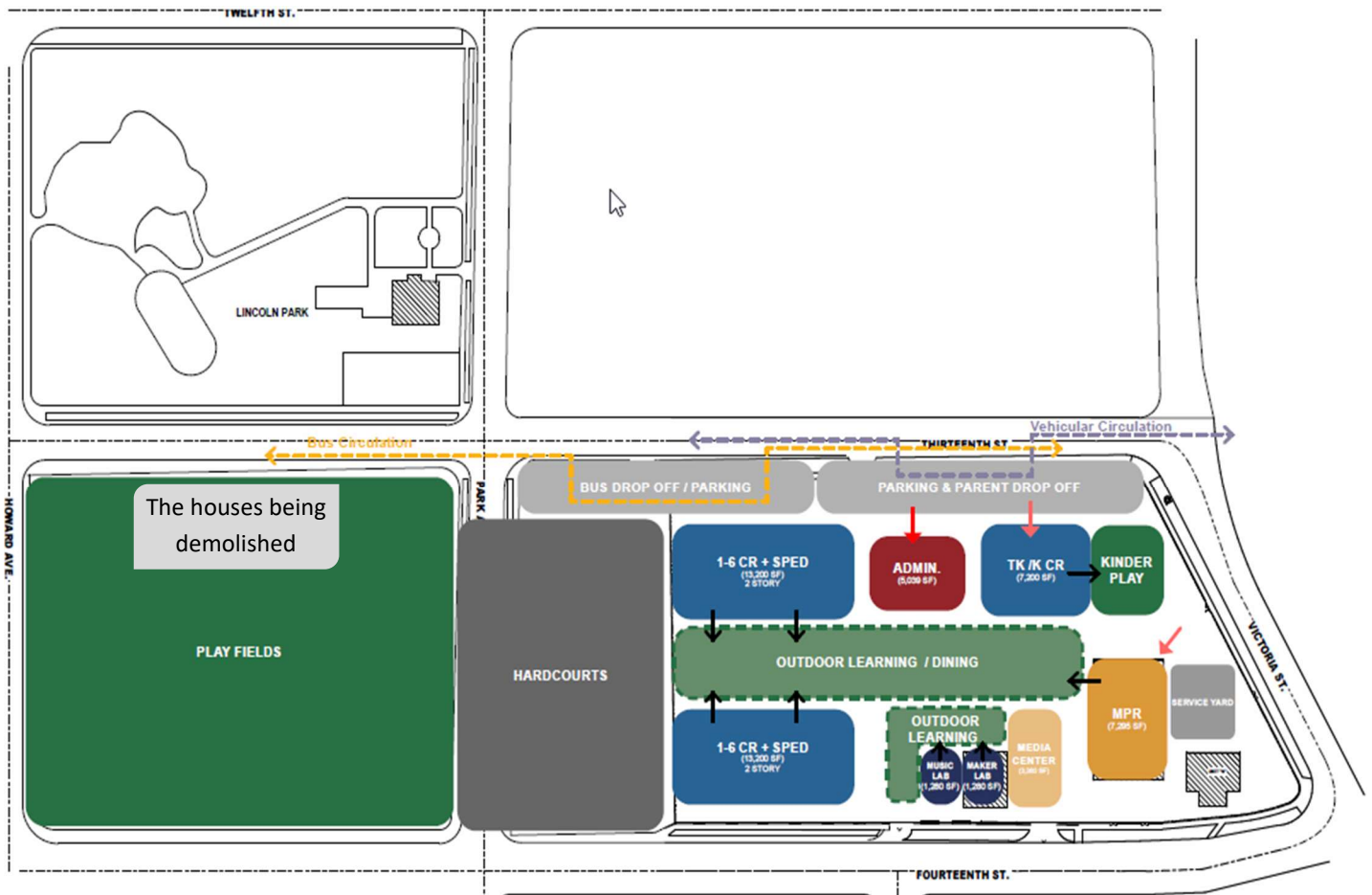
Project Status

Eastside Residential Housing Demolition Project

- ✓ Existing utilities disconnection completed
- ✓ HazMat abatement completed
- ✓ Demolition started on 9/29/2021
- ✓ EIR currently being prepared
- ✓ Under site acquisition phase

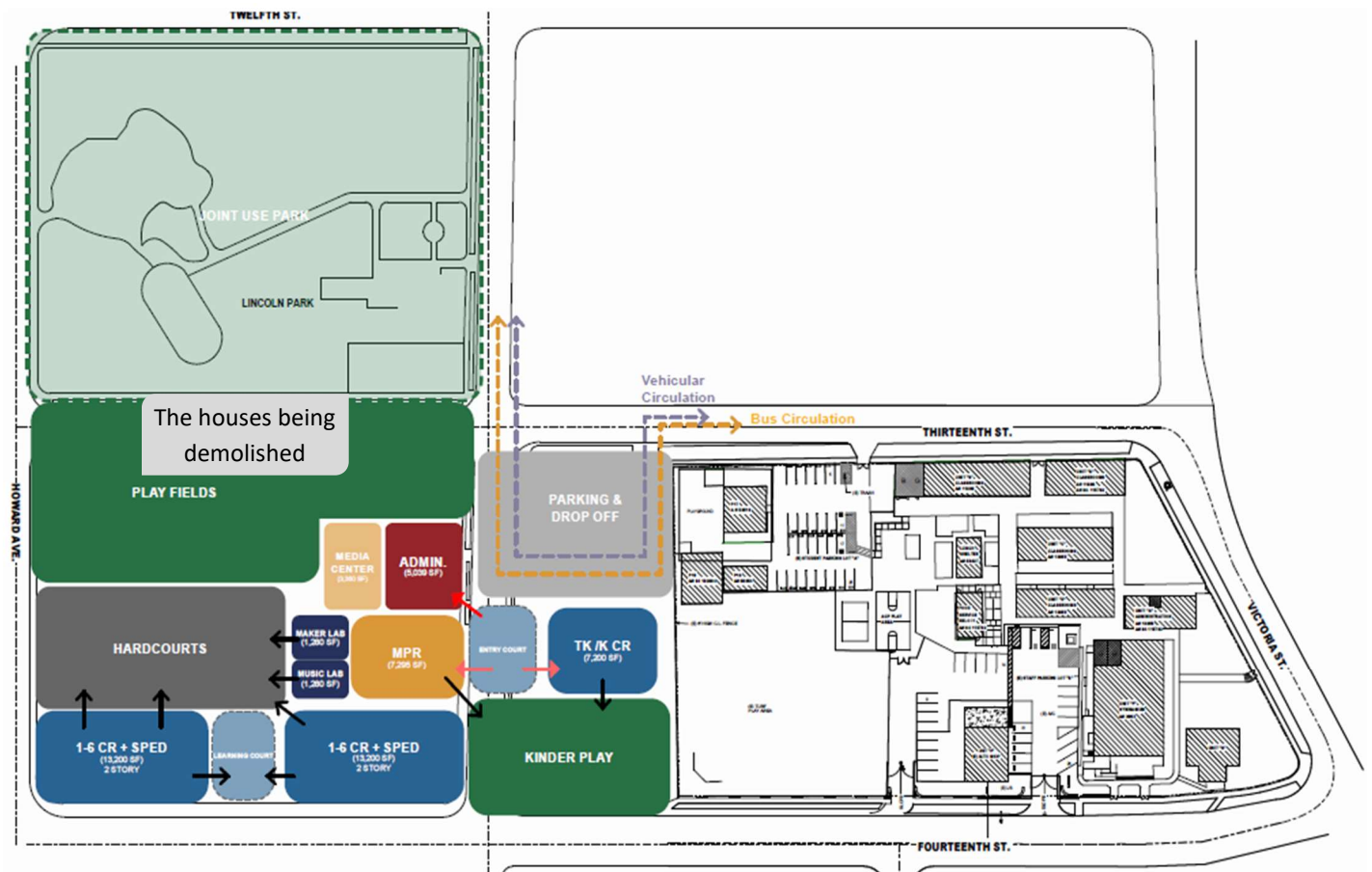
Eastside Neighborhood School

Option 1 – Lincoln School + B Lots, Vacate Park Ave.



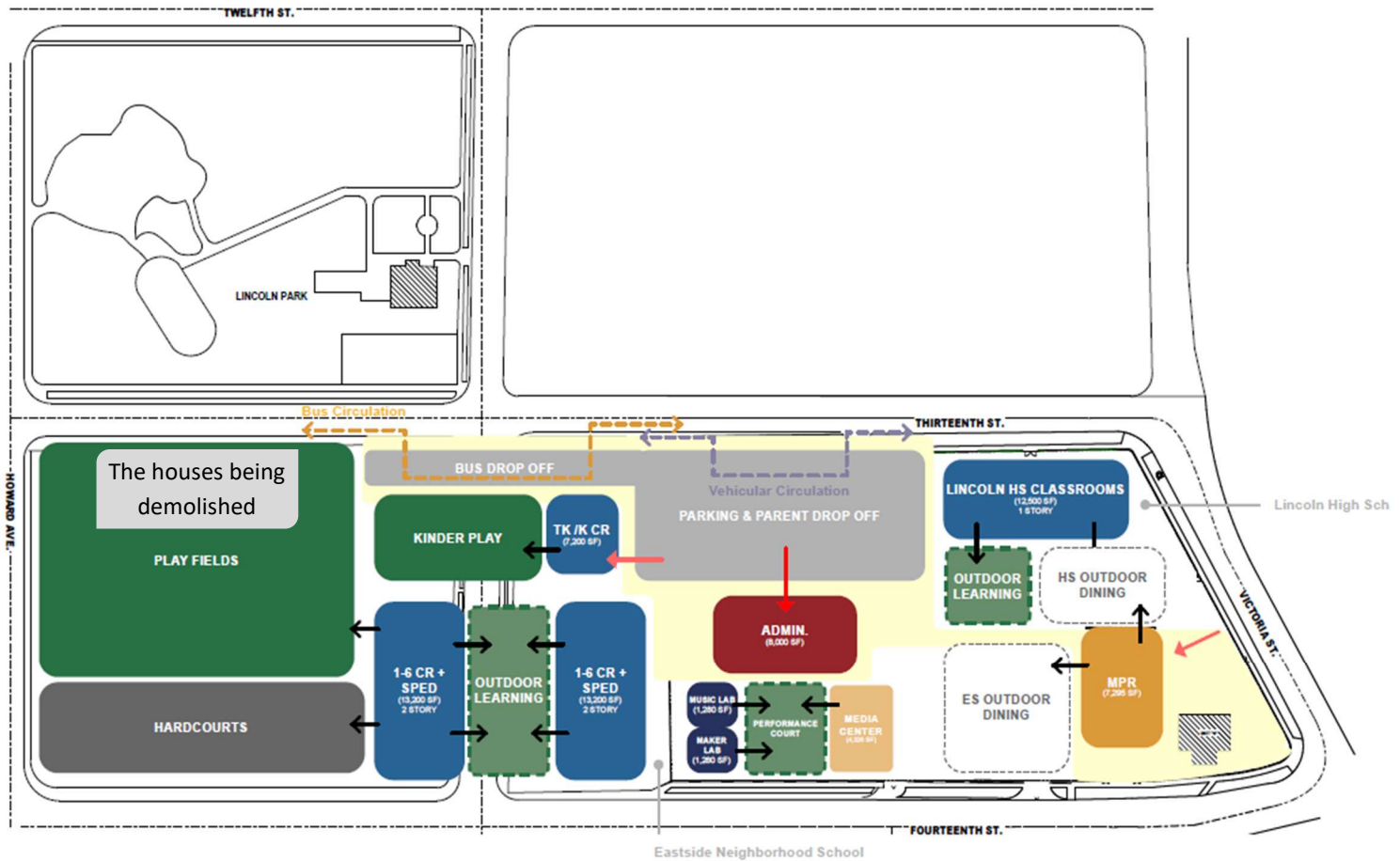
Eastside Neighborhood School

Option 2 –B Lots, + C Lots, Vacation of Park Ave., Lincoln Park Join Use



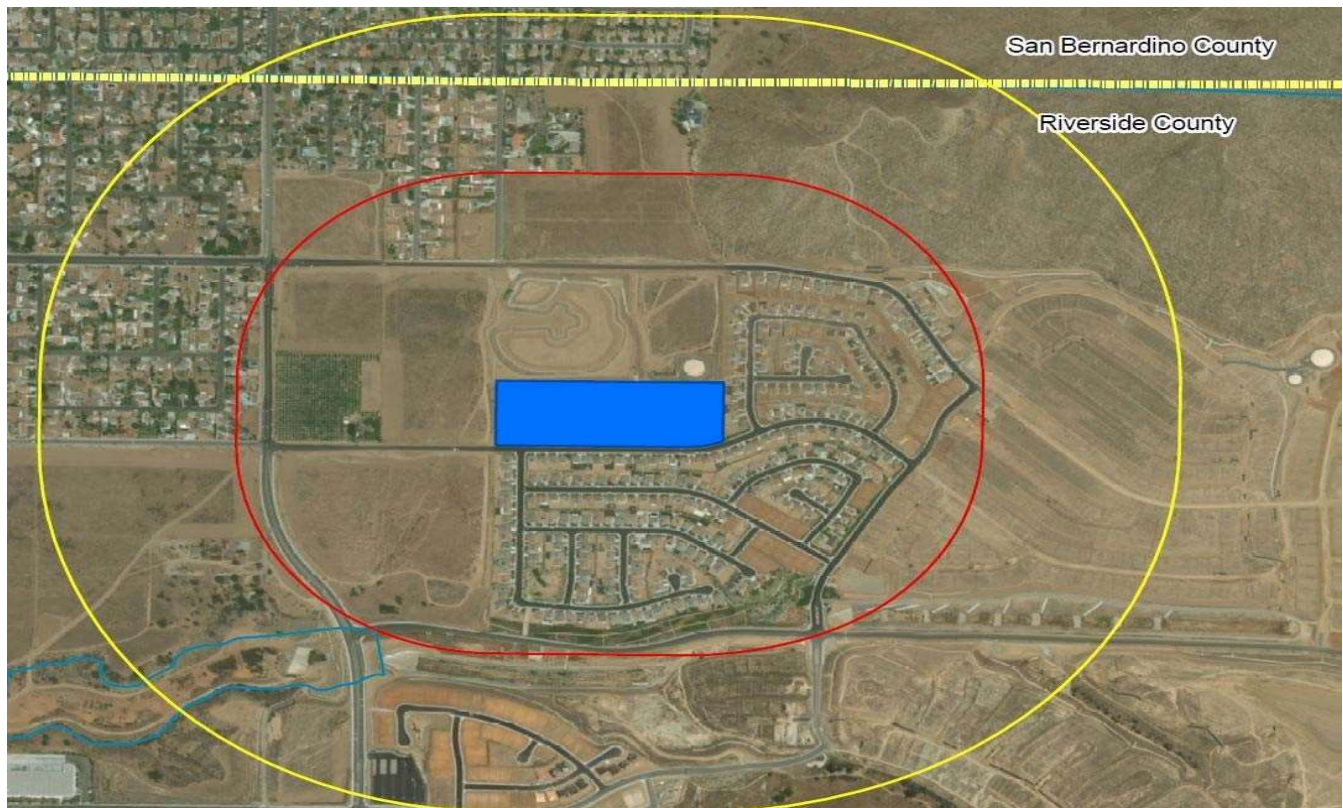
Eastside Neighborhood School

Option 3 – B Lots, + C Lots, Vacate of Park Ave., Reconfigure Lincoln



Spring Mt. Ranch Neighborhood School

Measure O Campus Improvements



Project Description

The site is 13 acres and is located in Spring Mt. Ranch development area. The location of the site is in the Northwestern corner of the Silverspot Road and Spring Street intersection.

Group:	Expanded
Architect:	Ruhnau Clarke Architects
DSA Submittal:	To be Determined
Bidding & Award:	To be Determined
Project Budget:	\$37.5 Millio

Project Status

- ✓ The District is in the process of forming a Design/ Communications Committee

STEM Education Center

Measure O Campus Improvements

Project Description

A state of the art public STEM high school on the premises of a world class public research university, University of California, Riverside. This project is currently in the early stages of Schematic Design with the CEQA process commencing shortly. The proposed high school will accommodate 1200 students and will focus on Computer Science, Environmental/Agricultural Science, Bio-Medical/Allied Health, and Engineering & Advanced Manufacturing.

Group:	Expanded
Architect:	Ruhnau Clarke Architects
DSA Submittal:	Pending
Project Budget:	\$64,000,000

Project Status

- ✓ work on EIR begins this fall

STEM High School @ UCR

Conceptual Design



Potential State Grants for Groups A, B & C Projects

The Riverside Unified School District will make every effort to augment its Measure O G.O. Bonds with future State eligible grants. Set forth below are estimated State new construction and modernization grant funding amounts that the District may be eligible for under the State's School Facility Program ("SFP"). The State passed a State School Bond Measure in November of 2016. However, the receipt of potential State grants is predicated on: 1) the Governor agreeing to issue State School Bonds, 2) the District meeting the State's eligibility requirements, and 3) the State funding levels remaining at current levels.

No.	School Project Name	Potential Estimated State Grants *
1	Harrison Elementary School - Modernization & New Construction Grants	\$3,292,748.00
2	Highgrove Elementary School - Modernization Grants	7,338,463.00
3	Jefferson Elementary School - Modernization Grants	2,919,697.00
4	Madison Elementary School - Modernization Grants	2,951,579.00
5	Sierra Middle School - Modernization Grants	140,375.00
6	Alcott Elementary School - Modernization Grants	4,992,754.00
7	Jackson Elementary School - Modernization Grants	4,090,530.00
8	Monroe Elementary School - Modernization Grants	2,417,132.00
9	Sunshine Early Childhood Center - Modernization Grants	1,224,606.00
10	Poly High School - Modernization Grants	4,947,273.00
11	Arlington High School - Modernization Grants	1,102,289.00
12	Adams Elementary School - Modernization Grants	2,880,515.00
13	Fremont Elementary School - Modernization Grants	5,108,915.00
14	Longfellow Elementary School - Modernization Grants	5,319,342.00
15	Magnolia Elementary School - Modernization Grants	3,626,244.00
16	University Middle School - Modernization Grants	2,185,090.00
17	Earhart Middle School - Modernization Grants	5,273,750.00
18	Riverside STEM Academy	497,281.00
19	Poly High School - Chiller Modernization	3,692,426.00
20	Roman High School - Modernization Grants	767,398.00
21	King High School Modernization Grants	6,364,647.00
22	Castle View Elementary School Portables	341,891.00
23	Emerson Elementary School 2 Portable Replacement	279,202.00
24	Jefferson Elementary School Portables	341,891.00
25	Kennedy Elementary School 2 Portable Replacement	167,521.00
COMBINED TOTAL:		\$72,263,559.00

District projects that are on the State's Workload List and may get funding from the current State Bond.
 These projects have been funded by OPSC and the District has received the funds.

School Funding Program Glossary of Acronyms

General Obligation Bonds (G.O. Bonds) – Fund 21: Measure 0 is a voter approved bond measure within the boundaries of the District. It represents a maximum tax of \$60 per \$100,000 of assessed property value.

Community Facilities District Bonds (CFDs): The Mello-Roos Community Facilities Act provides an alternative method for public agencies to fund facilities. The Community Facilities District ("CFD") is a financing entity through which a local government is authorized to levy special property taxes to pay debt service on bonds or to pay for the direct construction of facilities. CFD revenue is restricted to the funding of additional capacity (e.g. New Construction).

Developer Fees – Fund 25: School districts have the ability to impose impact fees from new residential development and commercial/industrial development for the construction or reconstruction of school facilities. Developer fees are collected at the time a building permit is issued and are restricted to the funding of additional capacity (e.g. New Construction).

Redevelopment Agency Revenue (RDA – Fund 25): California redevelopment law allows school districts to share property tax increment income via pass-through agreements with local redevelopment agencies. State law eliminated redevelopment agencies as of February 1, 2012; however, local educational agency's pass-through entitlements remain. Redevelopment revenue is received annually and can be used to fund modernization and/or new construction projects.

State School Facility Program Grants (SFP) - Fund 35: The SFP provides grants for school districts to acquire school sites, construct new school facilities, or modernize existing school facilities. The two major funding types available are "new construction" and "modernization". The new construction grant provides funding on a 50/50 State and local match basis. The modernization grant provides funding on a 60/40 basis.

California Clean Energy Jobs Act (Proposition 39): Prop. 39 is an energy efficiency grant program that provides funding for eligible repairs to heating, ventilation, and air-conditioning (HVAC) systems; new chillers, boilers and furnaces; new lighting and lighting control systems; Installation of energy-efficient windows, programmable thermostats, and thermal window shades; and on-site clean energy generation, such as solar photovoltaic.

Measure O Cumulative Project Expenditures

From
Inception to September 24, 2021



MEASURE O PROJECT COMMITMENTS AND EXPENDITURES

No.	District Project Name	MEASURE O CUMULATIVE COMMITMENTS	Measure O Expenditures Up to 5/31/2021	Expenditures From 6/1/2021 to 9/24/2021	MEASURE O CUMULATIVE EXPENDITURES	REMAINING MEASURE O COMMITMENTS	Current Project Phase
GROUP A PROJECTS							
1	Harrison Elementary School	\$7,868,020.74	(\$7,565,327.35)	(\$159,333.73)	(\$7,724,661.08)	\$143,359.66	Completed/April 2021
2	Highgrove Elementary School	18,508,230.24	(18,402,423.85)	(105,806.39)	(18,508,230.24)	0.00	Completed/August 2020
3	Jefferson Elementary School	16,550,066.93	(16,570,148.02)	81,628.57	(16,488,519.45)	61,547.48	Completed/April 2021
4	Madison Elementary School	16,605,666.33	(15,227,959.80)	(785,566.41)	(16,013,526.21)	592,140.12	Completed/May 2021
5	Sierra Middle School	<u>8,734,080.13</u>	<u>(8,592,024.63)</u>	<u>(142,055.50)</u>	<u>(8,734,080.13)</u>	<u>0.00</u>	Completed/November 2019
GROUP A PROJECT TOTALS:		\$68,266,064.37	(\$66,357,883.65)	(\$1,111,133.46)	(\$67,469,017.11)	\$797,047.26	
GROUP B PROJECTS							
6	Alcott Elementary School	\$11,518,309.41	(\$1,242,677.23)	(\$4,301,081.91)	(\$5,543,759.14)	\$5,974,550.27	Construction
7	Jackson Elementary School	18,727,516.05	(12,255,916.12)	(3,461,297.91)	(15,717,214.03)	3,010,302.02	Construction
8	Monroe Elementary School	19,834,690.57	(1,398,311.09)	(5,247,346.68)	(6,645,657.77)	13,189,032.80	Construction
9	Sunshine Early Childhood Center	5,071,883.53	(4,266,899.77)	(383,164.49)	(4,650,064.26)	421,819.27	Construction
10	Poly High School	<u>24,553,027.27</u>	<u>(13,035,935.48)</u>	<u>(4,601,295.09)</u>	<u>(17,637,230.57)</u>	<u>6,915,796.70</u>	Quad/Auxiliary Gym
GROUP B PROJECT TOTALS:		\$79,705,426.83	(\$32,199,739.69)	(\$17,994,186.08)	(\$50,193,925.77)	\$29,511,501.06	
GROUP C PROJECTS							
11	Adams Elementary School	\$10,990,069.00	(\$8,816,205.26)	(\$1,065,891.36)	(\$9,882,096.62)	\$1,107,972.38	Construction
12	Fremont Elementary School	13,846,240.23	(428,590.35)	(1,079,886.84)	(1,508,477.19)	12,337,763.04	Construction
13	Longfellow Elementary School	2,324,064.22	(2,208,720.65)	(21,044.80)	(2,229,765.45)	94,298.77	Planning
14	Magnolia Elementary School	11,331,264.26	(7,833,753.41)	(1,441,257.38)	(9,275,010.79)	2,056,253.47	Construction
15	University Middle School	428,572.70	(426,072.70)	0.00	(426,072.70)	2,500.00	Planning
16	Arlington High School	<u>26,319,211.94</u>	<u>(6,615,006.77)</u>	<u>(10,753,510.04)</u>	<u>(17,368,516.81)</u>	<u>8,950,695.13</u>	Construction
GROUP C PROJECT TOTALS:		\$65,239,422.35	(\$26,328,349.14)	(\$14,361,590.42)	(\$40,689,939.56)	\$24,549,482.79	

MEASURE O PROJECT COMMITMENTS AND EXPENDITURES

13	District Project Name	MEASURE O CUMULATIVE COMMITMENTS	Measure O Expenditures Up to 5/31/2021	Expenditures From 6/1/2021 to 9/24/2021	MEASURE O CUMULATIVE EXPENDITURES	REMAINING MEASURE O COMMITMENTS	Current Phase	Project
Groups D, E, F, & H and Expanded Projects								
17	Bryant Elementary School	\$161.01	\$0.00	(\$161.01)	(\$161.01)	\$0.00	Planning	
18	Elem. #35 (Spring Mtn Ranch)	4,239,099.14	(4,001,599.14)	(14,375.00)	(4,015,974.14)	223,125.00	Planning	
19	Franklin Elementary School	47,103.04	(47,103.04)	0.00	(47,103.04)	0.00	Planning	
20	King High School	891,610.79	(891,610.79)	0.00	(891,610.79)	0.00	Planning	
21	Mt. View Elementary School	13,302.50	(13,302.50)	0.00	(13,302.50)	0.00	Planning	
22	North High School	415,312.50	(93,437.50)	(91,593.75)	(185,031.25)	230,281.25	Planning	
23	Pachappa Elementary School	11,450.00	(11,450.00)	0.00	(11,450.00)	0.00	Planning	
24	Taft Elementary School	31,893.06	(31,893.06)	0.00	(31,893.06)	0.00	Planning	
25	Washington Elementary School	23,939.85	(23,939.85)	0.00	(23,939.85)	0.00	Planning	
26	Woodcrest Elementary School	20,170.63	(20,170.63)	0.00	(20,170.63)	0.00	Planning	
27	Earhart Middle School	12,350.00	(12,350.00)	0.00	(12,350.00)	0.00	Planning	
28	Ramona High School	21,250.00	(21,250.00)	0.00	(21,250.00)	0.00	Planning	
29	New STEM High School @ UCR	1,119,342.26	(819,512.36)	(198.90)	(819,711.26)	299,631.00	Planning	
30	Casa Blanca Neighborhood School	8,602,870.14	(8,191,394.64)	(133,771.68)	(8,325,166.32)	277,703.82	Planning	
31	Eastside Neighborhood School	3,260,471.99	(2,736,930.72)	(46,230.46)	(2,783,161.18)	477,310.81	Planning	
32	STEM Academy	9,952.47	(9,952.47)	0.00	(9,952.47)	0.00	Planning	
33	Facilities Projects	<u>3,138,727.56</u>	<u>(2,364,556.86)</u>	<u>(347,188.24)</u>	<u>(2,711,745.10)</u>	<u>426,982.46</u>	Planning	
	GROUPS D, E, F, & H AND EXPANDED PROJECTS:	\$21,859,006.94	(\$19,290,453.56)	(\$633,519.04)	(\$19,923,972.60)	\$1,935,034.34		
MEASURE O COMMITMENTS & EXPENDITURES:		<u>\$235,069,920.49</u>	<u>(\$144,176,426.04)</u>	<u>(\$34,100,429.00)</u>	<u>(\$178,276,855.04)</u>	<u>\$56,793,065.45</u>		

Measure O Detailed Expenditure Backup

from *Keystone Solutions*
July 1, 2021 to September 24, 2021



Measure O Expenditures for the 2021/2022 Fiscal Year

Project: 102-9776 - Adams Elementary School - Modernization				
Vendor	Encumbrance	Expenditure	Balance	Description
Arrowhead Mechanical, Inc.	\$57,153.78	\$0.00	\$57,153.78	Construction Costs
Best Contracting Services	\$186,877.65	(\$1,701.45)	\$185,176.20	Construction Costs
Construction Electric Inc	\$166,265.87	(\$14,765.85)	\$151,500.02	Electrical Costs
Crew, Inc.	\$63,887.00	(\$16,858.00)	\$47,029.00	Construction Costs
Cuyamaca Const., Inc.	\$123,277.20	(\$5,787.40)	\$117,489.80	Construction
David M. Bertino Manufacturing, Inc	\$18,814.75	\$0.00	\$18,814.75	Other Construction
Defoe Furniture 4 Kids Inc	\$4,779.47	(\$4,779.47)	\$0.00	Furniture
Design West Engineering, Inc.	\$3,720.00	(\$3,720.00)	\$0.00	Engineering Services
Fischer Inc.	\$7,969.66	(\$1,019.35)	\$6,950.31	Plumbing Costs
Gafcon, Inc.	\$801.00	(\$801.00)	\$0.00	Project Management
JPI Development Group, Inc.	\$37,157.01	(\$24,764.00)	\$12,393.01	Construction Costs
Kar Construction, Inc.	\$88,596.00	(\$29,536.00)	\$59,060.00	Construction Costs
LPA Architects	\$35,136.10	(\$15,937.94)	\$19,198.16	Architect Fees
RVH Constructors, Inc.	\$241,755.51	(\$65,676.44)	\$176,079.07	Construction Costs
Signature Flooring, Inc.	\$11,154.66	\$0.00	\$11,154.66	Flooring Construction
Smith System MFG. Co.	\$326.25	\$0.00	\$326.25	Furniture
Southern California Landscaping, Inc.	\$130,773.87	\$0.00	\$130,773.87	Landscaping Costs
Southland Inspections, Inc.	\$16,740.00	(\$1,800.00)	\$14,940.00	Inspection Costs
Superior Wall Systems, Inc.	\$37,140.74	(\$15,478.35)	\$21,662.39	Construction
Technet Partners Inc.	\$34,602.49	\$0.00	\$34,602.49	Technology/Network
Tilden-Coil Constructors	\$53,731.54	(\$10,062.92)	\$43,668.62	Construction Costs
Project Total:	\$1,320,660.55	(\$212,688.17)	\$1,107,972.38	102-9776 - Adams Elementary School - Modernization
Project: 104-0000 - Alcott Elementary School - Growth Project				
Vendor	Encumbrance	Expenditure	Balance	Description
Hamel Contracting, Inc.	\$1,221,228.00	\$0.00	\$1,221,228.00	Contractor Fees
Lee & Stires, Inc.	\$852,722.74	(\$535,011.30)	\$317,711.44	Construction Costs
Project Total:	\$2,073,950.74	(\$535,011.30)	\$1,538,939.44	104-0000 - Alcott Elementary School - Growth Project
Project: 104-9772 - Alcott Elementary School - New Construction				
Vendor	Encumbrance	Expenditure	Balance	Description
DLR Group, Inc.	\$2,160.66	(\$2,160.66)	\$0.00	Architect Fees
Tilden-Coil Constructors	\$1,316,547.23	(\$369,342.00)	\$947,205.23	Construction Costs

Project: 104-9772 - Alcott Elementary School - New Construction

Vendor	Encumbrance	Expenditure	Balance	Description
Project Total:	\$1,318,707.89	(\$371,502.66)	\$947,205.23	104-9772 - Alcott Elementary School - New Construction

Project: 104-9776 - Alcott Elementary School - Modernization

Vendor	Encumbrance	Expenditure	Balance	Description
Amtek Construction	\$1,769,027.53	(\$557,856.53)	\$1,211,171.00	Construction Contractor
Cardinal Environmental Consultants, Inc.	\$19,000.00	(\$1,911.00)	\$17,089.00	Environmental Costs
David M. Bertino Manufacturing, Inc	\$322,715.95	(\$171,112.10)	\$151,603.85	Other Construction
Design West Engineering, Inc.	\$16,980.00	(\$4,080.00)	\$12,900.00	Engineering Services
Empyrean Plumbing, Inc.	\$724,732.00	(\$368,508.50)	\$356,223.50	Plumbing Costs
Gafcon, Inc.	\$22,202.50	(\$1,305.00)	\$20,897.50	Project Management
Golden West Moving Systems, Inc.	\$35,464.00	(\$18,609.00)	\$16,855.00	Moving Costs
Hamel Contracting, Inc.	\$539,550.24	(\$168,138.45)	\$371,411.79	Contractor Fees
Inland Empire Landscape, Inc.	\$580,696.86	(\$137,854.44)	\$442,842.42	Landscaping
Lee & Stires, Inc.	\$132,194.03	\$0.00	\$132,194.03	Construction Costs
Mike's Custom Flooring, Inc	\$163,726.35	(\$30,069.07)	\$133,657.28	Flooring Costs
Placeworks	\$8,133.47	(\$4,753.20)	\$3,380.27	Community Planning & Design
R M A Group	\$120,920.00	(\$41,025.50)	\$79,894.50	Site Survey
RAN Enterprises Inc	\$677,115.00	(\$156,958.00)	\$520,157.00	Construction Costs
Rite-Way Roof Corporation	\$193,191.45	(\$15,104.05)	\$178,087.40	Roofing Costs
Rivco Coatings Inc	\$230,000.00	(\$26,580.05)	\$203,419.95	Construction Contractor
Siemens Industry, Inc.	\$49,690.00	\$0.00	\$49,690.00	Engineering Costs
Silver Creek Industries, Inc.	\$5,437,408.03	(\$2,604,761.05)	\$2,832,646.98	Construction Costs
Southcoast Acoustical Interiors, Inc	\$118,437.55	\$13,101.45	\$131,539.00	Construction Costs
Southland Inspections, Inc.	\$229,620.00	(\$23,940.00)	\$205,680.00	Inspection Costs
Spec Construction Co., Inc.	\$939,892.50	(\$151,240.95)	\$788,651.55	Construction Contractor
Project Total:	\$12,330,697.46	(\$4,470,705.44)	\$7,859,992.02	104-9776 - Alcott Elementary School - Modernization

Project: 105-9772 - Elem. #35 (Spring Mtn Ranch) - New Construction

Vendor	Encumbrance	Expenditure	Balance	Description
Ruhnau Clarke Architects	\$223,125.00	\$0.00	\$223,125.00	Architect Fees
Project Total:	\$223,125.00	\$0.00	\$223,125.00	105-9772 - Elem. #35 (Spring Mtn Ranch) - New Construction

Measure O Expenditures for the 2021/2022 Fiscal Year

Project: 114-0000 - Fremont Elementary School - Prop. 39

Vendor	Encumbrance	Expenditure	Balance	Description
Albert A. Webb Associates	\$6,686.00	\$0.00	\$6,686.00	Site Survey
Neff Construction, Inc.	\$1,215,769.75	\$0.00	\$1,215,769.75	Construction Costs
Project Total:	\$1,222,455.75	\$0.00	\$1,222,455.75	114-0000 - Fremont Elementary School - Prop. 39

Project: 114-9772 - Fremont Elementary School - New Construction

Vendor	Encumbrance	Expenditure	Balance	Description
Ruhnau Clarke Architects	\$140,969.14	\$0.00	\$140,969.14	Architect Fees
Project Total:	\$140,969.14	\$0.00	\$140,969.14	114-9772 - Fremont Elementary School - New Construction

Project: 114-9776 - Fremont Elementary School - Modernization

Vendor	Encumbrance	Expenditure	Balance	Description
AWI Builders, Inc	\$489,911.00	(\$93,401.00)	\$396,510.00	Construction Contractor
Bastion Security Inc	\$57,459.60	(\$3,986.40)	\$53,473.20	Security Costs
Bell Roofing Company	\$411,514.75	\$0.00	\$411,514.75	Roofing Costs
Bogh Engineering Inc.	\$880,664.50	(\$93,775.45)	\$786,889.05	Engineering Costs
CLM Professional Services, Inc.	\$9,000.00	(\$450.00)	\$8,550.00	Inspection Costs
Cardinal Environmental Consultants, Inc.	\$15,250.00	\$0.00	\$15,250.00	Environmental Costs
Caston, Inc.	\$850,842.50	(\$4,940.00)	\$845,902.50	Construction Costs
F.E.C. Electric	\$1,469,874.00	(\$13,050.00)	\$1,456,824.00	Electrical Costs
Gafcon, Inc.	\$30,816.50	(\$837.00)	\$29,979.50	Project Management
Glore & Associates, Inc.	\$201,800.00	(\$7,827.05)	\$193,972.95	Hardware Supplier
Golden West Moving Systems, Inc.	\$18,815.00	(\$5,272.00)	\$13,543.00	Moving Costs
Inland Pacific Tile, Inc.	\$96,592.10	\$0.00	\$96,592.10	Construction Costs
JPI Development Group, Inc.	\$1,014,452.35	(\$100,226.35)	\$914,226.00	Construction Costs
Marina Landscape, Inc.	\$706,687.62	(\$29,511.75)	\$677,175.87	Landscaping Costs
PGC Construction, Inc.	\$390,000.00	(\$9,700.45)	\$380,299.55	Construction Contractor
Prospectra Contract Flooring	\$182,670.00	\$0.00	\$182,670.00	Flooring Costs
Queen City Glass Co.	\$173,756.65	\$0.00	\$173,756.65	Construction
Ruhnau Clarke Architects	\$80,836.52	(\$41,912.89)	\$38,923.63	Architect Fees
Sandy Pringle Associates, Inc.	\$259,160.00	\$0.00	\$259,160.00	Construction Inspection
Siemens Industry, Inc.	\$26,949.99	\$0.00	\$26,949.99	Engineering Costs
Southcoast Acoustical Interiors, Inc	\$60,173.25	\$0.00	\$60,173.25	Construction Costs
Spec Construction Co., Inc.	\$2,822,728.60	(\$21,375.00)	\$2,801,353.60	Construction Contractor

Project: 114-9776 - Fremont Elementary School - Modernization

Vendor	Encumbrance	Expenditure	Balance	Description
Stolo Cabinets, Inc.	\$147,845.00	(\$5,519.50)	\$142,325.50	Furniture & Equipment
T3 Contractors Corp.	\$208,061.79	\$0.00	\$208,061.79	Construction Costs
TGR Geotechnical, Inc.	\$270,223.00	(\$9,793.88)	\$260,429.12	Construction Contractor
Tomahawk Builders, Inc.	\$1,257,866.00	\$0.00	\$1,257,866.00	Construction Contractor
Westland Mechanical	\$504,421.90	\$0.00	\$504,421.90	Construction Contractor
Project Total:	\$12,638,372.62	(\$441,578.72)	\$12,196,793.90	114-9776 - Fremont Elementary School - Modernization

Project: 116-0000 - Grant Education Center - Grant Renovation

Vendor	Encumbrance	Expenditure	Balance	Description
Alliant Consulting, Inc.	\$15,053.75	(\$2,375.00)	\$12,678.75	Labor Compliance
Amtech Elevators	\$6,265.00	\$0.00	\$6,265.00	Construction Contractor
California Steeplejack	\$6,920.60	\$0.00	\$6,920.60	Flagpole Repair
Department of General Services	\$25,930.89	(\$25,930.89)	\$0.00	Plan Check Fees
HMC Architects	\$255,826.16	(\$3,360.82)	\$252,465.34	Architect Fees
Inland Inspections & Consulting	\$26,255.00	\$0.00	\$26,255.00	Consultant Costs
Leighton Consulting, Inc	\$9,502.90	\$0.00	\$9,502.90	Site Survey
PCM3, Inc.	\$72,980.80	(\$72,980.80)	\$0.00	Construction Management
Ryan Electric, Inc.	\$34,367.12	(\$21,711.59)	\$12,655.53	Electrical Costs
Siemens Industry, Inc.	\$3,000.00	(\$3,000.00)	\$0.00	Engineering Costs
Southcoast Acoustical Interiors, Inc	\$29,225.00	(\$29,225.00)	\$0.00	Construction Costs
Technet Partners Inc.	\$48,660.68	(\$48,660.68)	\$0.00	Technology/Network
Troxell Communications, Inc.	\$4,297.16	(\$4,297.16)	\$0.00	Technology Costs
Project Total:	\$538,285.06	(\$211,541.94)	\$326,743.12	116-0000 - Grant Education Center - Grant Renovation

Project: 116-9776 - Grant Education Center - Modernization

Vendor	Encumbrance	Expenditure	Balance	Description
Demo Plus LLC	\$8,700.00	(\$8,700.00)	\$0.00	Supplies
Inland Building Construction Companies, Inc.	\$7,750.00	\$0.00	\$7,750.00	Construction Costs
Project Total:	\$16,450.00	(\$8,700.00)	\$7,750.00	116-9776 - Grant Education Center - Modernization

Project: 118-9647 - Harrison Elementary School - Portable Classroom

Vendor	Encumbrance	Expenditure	Balance	Description
ATI Architects And Engineers	\$3,646.64	\$0.00	\$3,646.64	Architect Fees

Project: 118-9647 - Harrison Elementary School - Portable Classroom

Vendor	Encumbrance	Expenditure	Balance	Description
Project Total:	\$3,646.64	\$0.00	\$3,646.64	118-9647 - Harrison Elementary School - Portable Classroom

Project: 118-9776 - Harrison Elementary School - Modernization

Vendor	Encumbrance	Expenditure	Balance	Description
ATI Architects And Engineers	\$105,890.73	\$0.00	\$105,890.73	Architect Fees
Bastion Security Inc	\$7,983.12	\$0.00	\$7,983.12	Security Costs
Department of General Services	\$2,107.49	(\$2,107.49)	\$0.00	Plan Check Fees
Design West Engineering, Inc.	\$6,447.00	\$0.00	\$6,447.00	Engineering Services
Golden West Moving Systems, Inc.	\$4,240.00	\$0.00	\$4,240.00	Moving Costs
Hamel Contracting, Inc.	\$14,016.01	\$0.00	\$14,016.01	Contractor Fees
Marina Landscape, Inc.	\$7,607.44	\$0.00	\$7,607.44	Landscaping Costs
Project Total:	\$148,291.79	(\$2,107.49)	\$146,184.30	118-9776 - Harrison Elementary School - Modernization

Project: 122-9776 - Highgrove Elementary School - Modernization

Vendor	Encumbrance	Expenditure	Balance	Description
Inland Building Construction Companies, Inc.	\$6,100.00	(\$6,100.00)	\$0.00	Construction Costs
Statewide Educational Wrap-up Program (SEWUP)	\$423.04	(\$423.04)	\$0.00	Insurance
Project Total:	\$6,523.04	(\$6,523.04)	\$0.00	122-9776 - Highgrove Elementary School - Modernization

Project: 128-9776 - Jackson Elementary School - Modernization

Vendor	Encumbrance	Expenditure	Balance	Description
Anixter Inc.	\$7,034.93	\$0.00	\$7,034.93	Technology
Bastion Security Inc	\$9,212.40	(\$3,070.80)	\$6,141.60	Security Costs
Burgess Moving And Storage Company	\$21,451.75	(\$5,025.00)	\$16,426.75	Moving Costs
C.T. Georgiou Painting Co.	\$246,041.52	(\$43,700.00)	\$202,341.52	Painting Costs
Caston, Inc.	\$733,965.49	(\$208,536.93)	\$525,428.56	Construction Costs
Champion Electric, Inc.	\$449,498.22	(\$156,277.40)	\$293,220.82	Electrical Costs
Culver-Newlin Incorporated	\$15,180.67	\$0.00	\$15,180.67	Furniture & Equipment
Dalke & Sons Construction, Inc.	\$105,646.21	\$0.00	\$105,646.21	Construction Costs
Division Of The State Architect	\$6,237.02	(\$6,237.02)	\$0.00	Plan Check Fees
Erickson-Hall Construction Co.	\$446,902.91	(\$128,000.00)	\$318,902.91	Construction Management
First Construction Services, Inc.	\$8,832.00	(\$8,832.00)	\$0.00	Inspection Costs
Gafcon, Inc.	\$13,710.50	(\$1,126.50)	\$12,584.00	Project Management

Project: 128-9776 - Jackson Elementary School - Modernization

Vendor	Encumbrance	Expenditure	Balance	Description
Inland Building Construction Companies, Inc.	\$835,354.50	(\$260,427.90)	\$574,926.60	Construction Costs
Letner Roofing Co.	\$458,429.75	(\$160,664.00)	\$297,765.75	Roofing Costs
Nexus IS, Inc.	\$24,076.64	\$0.00	\$24,076.64	Materials and Supplies
Office & Ergonomic Solutions, Inc	\$23,471.52	\$0.00	\$23,471.52	Furniture and Equipment
Platinum Construction, Inc.	\$300,118.44	(\$56,591.26)	\$243,527.18	Construction
R M A Group	\$87,046.00	(\$28,782.00)	\$58,264.00	Site Survey
Simco Mechanical, Inc.	\$335,169.06	(\$81,230.42)	\$253,938.64	Permanent Construction Costs
Smith System MFG. Co.	\$56,679.10	\$0.00	\$56,679.10	Furniture
Wolff/Lang/Christopher Architects, Incorporated	\$96,360.85	(\$450.00)	\$95,910.85	Architect Fees
Project Total:	\$4,280,419.48	(\$1,148,951.23)	\$3,131,468.25	128-9776 - Jackson Elementary School - Modernization

Project: 130-9772 - Jefferson Elementary School - New Construction

Vendor	Encumbrance	Expenditure	Balance	Description
Wolff/Lang/Christopher Architects, Incorporated	\$8,358.69	\$0.00	\$8,358.69	Architect Fees
Project Total:	\$8,358.69	\$0.00	\$8,358.69	130-9772 - Jefferson Elementary School - New Construction

Project: 130-9776 - Jefferson Elementary School - Modernization

Vendor	Encumbrance	Expenditure	Balance	Description
Burgess Moving And Storage Company	\$2,160.00	(\$2,160.00)	\$0.00	Moving Costs
Erickson-Hall Construction Co.	\$8,984.38	\$0.00	\$8,984.38	Construction Management
King Companies	\$348.54	\$0.00	\$348.54	Moving Costs
State Water Resources Control Board	\$509.00	(\$509.00)	\$0.00	Utilities
Technet Partners Inc.	\$416.50	(\$416.50)	\$0.00	Technology/Network
Wolff/Lang/Christopher Architects, Incorporated	\$52,840.25	\$0.00	\$52,840.25	Architect Fees
Project Total:	\$65,258.67	(\$3,085.50)	\$62,173.17	130-9776 - Jefferson Elementary School - Modernization

Project: 136-9772 - Longfellow Elementary School - New Construction

Vendor	Encumbrance	Expenditure	Balance	Description
Hernandez, Guadalupe	\$14,080.00	(\$14,080.00)	\$0.00	Consultant
Overland, Pacific & Cutler LLC	\$3,642.59	\$0.00	\$3,642.59	Real Estate Services
Riverside, City Of	\$5,714.80	(\$5,714.80)	\$0.00	Permits & Fees
Project Total:	\$23,437.39	(\$19,794.80)	\$3,642.59	136-9772 - Longfellow Elementary School - New Construction

Project: 136-9776 - Longfellow Elementary School - Modernization

Vendor	Encumbrance	Expenditure	Balance	Description
CLM Professional Services, Inc.	\$7,600.00	\$0.00	\$7,600.00	Inspection Costs
Cardinal Environmental Consultants, Inc.	\$8,000.00	\$0.00	\$8,000.00	Environmental Costs
Interior Demolition, Inc.	\$70,590.00	\$0.00	\$70,590.00	Demolition Costs
United Site Services of California, Inc.	\$2,216.18	\$0.00	\$2,216.18	Portable Toilet Supplier
Project Total:	\$88,406.18	\$0.00	\$88,406.18	136-9776 - Longfellow Elementary School - Modernization

Project: 138-9776 - Madison Elementary School - Modernization

Vendor	Encumbrance	Expenditure	Balance	Description
Arrowhead Mechanical, Inc.	\$5,747.45	\$0.00	\$5,747.45	Construction Costs
Bravo Construction Services, Inc.	\$167,151.79	\$0.00	\$167,151.79	Construction Costs
Burgess Moving And Storage Company	\$3,105.00	(\$3,105.00)	\$0.00	Moving Costs
Caston, Inc.	\$82,656.87	(\$38,688.86)	\$43,968.01	Construction Costs
Construction Hardware Co.	\$1,344.19	(\$1,344.19)	\$0.00	Construction Costs
DAART Engineering Company, Inc.	\$6,462.68	(\$3,463.22)	\$2,999.46	Engineering Costs
Defoe Furniture 4 Kids Inc	\$6,372.63	(\$6,372.63)	\$0.00	Furniture
Easy Networks Cabling Inc.	\$3,938.65	\$0.00	\$3,938.65	Structured Network Cabling
Fischer Inc.	\$104,239.00	(\$55,087.47)	\$49,151.53	Plumbing Costs
Grainger	(\$317.51)	\$317.51	\$0.00	Equipment Supplier
K & Z Cabinet Co., Inc.	\$26,179.17	(\$15,762.00)	\$10,417.17	Furniture & Equipment
King Companies	\$632.20	\$0.00	\$632.20	Moving Costs
Knowland Construction Services	\$4,900.74	(\$4,900.74)	\$0.00	Construction Costs
LPA Architects	\$28,348.33	(\$1,458.50)	\$26,889.83	Architect Fees
Marina Landscape, Inc.	\$25,788.00	\$0.00	\$25,788.00	Landscaping Costs
New Vendor	\$2,434.00	\$0.00	\$2,434.00	
Rocky Coast Builders, Inc	\$204,076.62	(\$71,392.43)	\$132,684.19	Construction Costs
Sierra School Equipment Co	\$6,541.79	\$0.00	\$6,541.79	School Equipment
State Water Resources Control Board	\$553.00	(\$553.00)	\$0.00	Utilities
Statewide Educational Wrap-up Program (SEWUP)	\$672.00	(\$672.00)	\$0.00	Insurance
The Mike Cox Electric, Inc.	\$100,106.01	\$0.00	\$100,106.01	Electrical Costs
Troxell Communications, Inc.	\$911.19	(\$911.19)	\$0.00	Technology Costs
Velocity Glazing, Inc.	\$24,315.41	(\$10,625.37)	\$13,690.04	Construction Costs
Project Total:	\$806,159.21	(\$214,019.09)	\$592,140.12	138-9776 - Madison Elementary School - Modernization

Measure O Expenditures for the 2021/2022 Fiscal Year

Project: 140-9776 - Magnolia Elementary School - Modernization				
Vendor	Encumbrance	Expenditure	Balance	Description
ATI Architects And Engineers	\$16,304.64	\$0.00	\$16,304.64	Architect Fees
Bithell Inc.	\$11,966.01	\$0.00	\$11,966.01	Other Construction - Painting
Bogh Engineering Inc.	\$335,740.56	(\$25,445.95)	\$310,294.61	Engineering Costs
Caston, Inc.	\$97,526.70	\$0.00	\$97,526.70	Construction Costs
Champion Electric, Inc.	\$191,373.90	(\$7,412.90)	\$183,961.00	Electrical Costs
Design West Engineering, Inc.	\$5,301.00	(\$5,301.00)	\$0.00	Engineering Services
Donald M. Hoover Company	\$22,725.81	\$0.00	\$22,725.81	Construction Costs
Franklin Mechanical Systems, Inc.	\$301,444.59	\$0.00	\$301,444.59	Construction Costs
Gafcon, Inc.	\$4,953.36	(\$720.00)	\$4,233.36	Project Management
Horizons Construction Co. Int'l, Inc.	\$394,631.80	(\$87,115.00)	\$307,516.80	Construction
Infinity Structures, Inc.	\$132,314.30	\$0.00	\$132,314.30	Construction Costs
Inland Building Construction Companies, Inc.	\$196,228.83	(\$81,828.25)	\$114,400.58	Construction Costs
Inland Pacific Tile, Inc.	\$4,317.90	\$0.00	\$4,317.90	Construction Costs
Interpipe Contracting, Inc.	\$92,277.00	\$0.00	\$92,277.00	Plumbing Contractor
Nexus IS, Inc.	\$2,175.00	\$0.00	\$2,175.00	Materials and Supplies
Office & Ergonomic Solutions, Inc	\$2,298.98	\$0.00	\$2,298.98	Furniture and Equipment
Rite-Way Roof Corporation	\$56,057.86	\$0.00	\$56,057.86	Roofing Costs
SWPPP CAL	\$5,260.00	(\$3,600.00)	\$1,660.00	Other
Southcoast Acoustical Interiors, Inc	\$41,250.00	\$0.00	\$41,250.00	Construction Costs
Southern California Landscaping, Inc.	\$327,759.00	(\$153,897.15)	\$173,861.85	Landscaping Costs
Southland Inspections, Inc.	\$16,329.00	(\$9,720.00)	\$6,609.00	Inspection Costs
Stolo Cabinets, Inc.	\$40,682.30	\$0.00	\$40,682.30	Furniture & Equipment
Tilden-Coil Constructors	\$157,195.41	(\$24,820.23)	\$132,375.18	Construction Costs
Project Total:	\$2,456,113.95	(\$399,860.48)	\$2,056,253.47	140-9776 - Magnolia Elementary School - Modernization
Project: 142-0000 - Monroe Elementary School - Undistributed				
Vendor	Encumbrance	Expenditure	Balance	Description
Caston, Inc.	\$446,723.00	\$0.00	\$446,723.00	Construction Costs
Project Total:	\$446,723.00	\$0.00	\$446,723.00	142-0000 - Monroe Elementary School - Undistributed
Project: 142-9776 - Monroe Elementary School - Modernization				
Vendor	Encumbrance	Expenditure	Balance	Description
Amtek Construction	\$2,187,608.99	(\$315,847.46)	\$1,871,761.53	Construction Contractor

Measure O Expenditures for the 2021/2022 Fiscal Year

Project: 142-9776 - Monroe Elementary School - Modernization				
Vendor	Encumbrance	Expenditure	Balance	Description
Beltmann Relocation Group	\$40,150.00	(\$3,836.70)	\$36,313.30	Moving and Storage
Bravo Construction Services, Inc.	\$2,282,119.55	(\$345,474.39)	\$1,936,645.16	Construction Costs
Cannon Corporation	\$394.00	\$0.00	\$394.00	Site Survey
Canyon Steel Fabricators, Inc.	\$955,501.75	(\$414,004.87)	\$541,496.88	Construction
Cardinal Environmental Consultants, Inc.	\$13,500.00	\$0.00	\$13,500.00	Environmental Costs
Caston, Inc.	\$326,260.25	(\$14,440.00)	\$311,820.25	Construction Costs
Crew, Inc.	\$612,106.78	(\$160,024.60)	\$452,082.18	Construction Costs
Erickson-Hall Construction Co.	\$228,000.00	(\$228,000.00)	\$0.00	Construction Management
Farnsworth Group, Inc.	\$19,700.00	\$0.00	\$19,700.00	Other Planning Costs
Fischer Inc.	\$1,486,945.90	(\$318,290.85)	\$1,168,655.05	Plumbing Costs
Gafcon, Inc.	\$23,319.50	(\$991.50)	\$22,328.00	Project Management
HMC Architects	\$635,312.00	(\$79,756.66)	\$555,555.34	Architect Fees
Hamel Contracting, Inc.	\$2,369,047.02	(\$220,201.72)	\$2,148,845.30	Contractor Fees
Infinity Structures, Inc.	\$354,247.50	(\$98,467.50)	\$255,780.00	Construction Costs
Knowland Construction Services	\$233,376.00	(\$41,184.00)	\$192,192.00	Construction Costs
Leighton Consulting, Inc	\$337,642.60	(\$32,364.95)	\$305,277.65	Site Survey
Letner Roofing Co.	\$1,165,600.00	(\$296,318.30)	\$869,281.70	Roofing Costs
McKernan Inc.	\$593,100.00	(\$17,138.95)	\$575,961.05	Construction Contractor
Mobile Modular Management Corp	\$32,389.00	(\$5,694.00)	\$26,695.00	Telecommunications
Montgomery Hardware Company	\$890.65	\$0.00	\$890.65	Materials and Supplies
N E P Painting Contractor's, Inc.	\$245,000.00	\$0.00	\$245,000.00	Commercial Painters
Nuway, Inc.	\$411,639.15	(\$53,903.00)	\$357,736.15	Construction Contractor
Progressive Surface Solutions, LLC	\$558,661.25	(\$15,005.25)	\$543,656.00	Construction Contractor
Riverside, City Of	\$1,702.00	(\$1,702.00)	\$0.00	Permits & Fees
Siemens Industry, Inc.	\$25,765.00	\$0.00	\$25,765.00	Engineering Costs
Simco Mechanical, Inc.	\$1,147,517.50	(\$95,745.75)	\$1,051,771.75	Permanent Construction Costs
Stolo Cabinets, Inc.	\$203,484.20	\$0.00	\$203,484.20	Furniture & Equipment
Project Total:	\$16,490,980.59	(\$2,758,392.45)	\$13,732,588.14	142-9776 - Monroe Elementary School - Modernization
Project: 250-9776 - Sierra Middle - Modernization				
Vendor	Encumbrance	Expenditure	Balance	Description
RAN Enterprises Inc	\$137,995.50	(\$137,995.50)	\$0.00	Construction Costs
Project Total:	\$137,995.50	(\$137,995.50)	\$0.00	250-9776 - Sierra Middle - Modernization

Project: 250-9776 - Sierra Middle - Modernization

Vendor	Encumbrance	Expenditure	Balance	Description
--------	-------------	-------------	---------	-------------

Project: 260-9776 - University Middle School - Modernization

Vendor	Encumbrance	Expenditure	Balance	Description
Cardinal Environmental Consultants, Inc.	\$2,500.00	\$0.00	\$2,500.00	Environmental Costs
Project Total:	\$2,500.00	\$0.00	\$2,500.00	260-9776 - University Middle School - Modernization

Project: 310-9772 - Arlington High School - New Construction

Vendor	Encumbrance	Expenditure	Balance	Description
Ruhnau Clarke Architects	\$264,435.49	(\$81,940.91)	\$182,494.58	Architect Fees
Project Total:	\$264,435.49	(\$81,940.91)	\$182,494.58	310-9772 - Arlington High School - New Construction

Project: 310-9776 - Arlington High School - Modernization

Vendor	Encumbrance	Expenditure	Balance	Description
All Star Air Systems Inc	\$491,854.21	(\$131,213.43)	\$360,640.78	Construction
Armstrong & Brooks Consult. Engs.	\$10,320.00	(\$10,320.00)	\$0.00	Engineering Consultant
Bell Roofing Company	\$740,866.45	(\$349,922.04)	\$390,944.41	Roofing Costs
Bogh Engineering Inc.	\$1,245,649.00	(\$556,831.40)	\$688,817.60	Engineering Costs
C.T. Georgiou Painting Co.	\$225,000.00	(\$99,227.49)	\$125,772.51	Painting Costs
CDW-Government Inc.	\$16,595.88	\$0.00	\$16,595.88	Plan Check Fees
California Commercial Pools, Inc.	\$1,761,283.00	(\$215,050.20)	\$1,546,232.80	Pool Supplies
Cardinal Environmental Consultants, Inc.	\$9,043.00	(\$4,521.50)	\$4,521.50	Environmental Costs
Caston, Inc.	\$830,861.10	(\$682,582.60)	\$148,278.50	Construction Costs
Continental Marble and Tile Co.	\$109,538.56	(\$59,324.65)	\$50,213.91	Other Construction
Crew, Inc.	\$314,899.00	(\$161,774.00)	\$153,125.00	Construction Costs
DAART Engineering Company, Inc.	\$63,853.50	(\$44,275.98)	\$19,577.52	Engineering Costs
Design West Engineering, Inc.	\$20,400.00	(\$3,060.00)	\$17,340.00	Engineering Services
F.E.C. Electric	\$1,437,836.20	(\$597,663.40)	\$840,172.80	Electrical Costs
First Construction Services, Inc.	\$246,620.00	(\$16,720.00)	\$229,900.00	Inspection Costs
Gafcon, Inc.	\$16,823.17	(\$990.00)	\$15,833.17	Project Management
Infinity Structures, Inc.	\$495,914.91	(\$281,320.36)	\$214,594.55	Construction Costs
Inland Empire Landscape, Inc.	\$189,099.64	(\$50,361.71)	\$138,737.93	Landscaping
KI, Pallas Textiles, OEI	\$86,931.04	\$0.00	\$86,931.04	Other

Project: 310-9776 - Arlington High School - Modernization				
Vendor	Encumbrance	Expenditure	Balance	Description
Leighton Consulting, Inc	\$82,520.39	(\$35,597.50)	\$46,922.89	Site Survey
New Dimension Masonry, Inc.	\$137,956.35	(\$6,928.82)	\$131,027.53	Construction
New Star Construction Services, Inc.	\$194,011.67	(\$79,272.24)	\$114,739.43	Construction Contractor
Nexus IS, Inc.	\$167,809.29	\$0.00	\$167,809.29	Materials and Supplies
Office & Ergonomic Solutions, Inc	\$22,020.97	\$0.00	\$22,020.97	Furniture and Equipment
Queen City Glass Co.	\$440,709.13	(\$303,699.13)	\$137,010.00	Construction
RND Contractors Inc.	\$176,629.01	(\$20,762.50)	\$155,866.51	Construction
Rc Construction, Inc.	\$2,316,030.82	(\$1,042,888.44)	\$1,273,142.38	Construction Costs
Ruhnau Clarke Architects	\$12,378.00	(\$1,878.00)	\$10,500.00	Architect Fees
Siemens Industry, Inc.	\$24,650.00	\$0.00	\$24,650.00	Engineering Costs
Signature Flooring, Inc.	\$102,911.15	(\$56,735.85)	\$46,175.30	Flooring Construction
Southcoast Acoustical Interiors, Inc	\$159,951.05	(\$107,672.03)	\$52,279.02	Construction Costs
Technet Partners Inc.	\$30,845.29	\$0.00	\$30,845.29	Technology/Network
The Gas Company	\$17,059.09	(\$17,059.09)	\$0.00	Utility Costs
Tilden-Coil Constructors	\$1,421,898.48	(\$487,690.00)	\$934,208.48	Construction Costs
Troxell Communications, Inc.	\$2,289.75	(\$2,289.75)	\$0.00	Technology Costs
Valley Industrial Mechanical	\$795,684.88	(\$222,911.32)	\$572,773.56	Construction
Project Total:	\$14,418,743.98	(\$5,650,543.43)	\$8,768,200.55	310-9776 - Arlington High School - Modernization
Project: 330-0000 - North High School - Prop. 39 (CLOSED)				
Vendor	Encumbrance	Expenditure	Balance	Description
Division Of The State Architect	\$1,437.75	(\$1,437.75)	\$0.00	Plan Check Fees
Murals for Schools	\$2,995.00	(\$2,995.00)	\$0.00	Wall Murals
Wolff/Lang/Christopher Architects, Incorporated	\$8,910.00	\$0.00	\$8,910.00	Architect Fees
Project Total:	\$13,342.75	(\$4,432.75)	\$8,910.00	330-0000 - North High School - Prop. 39 (CLOSED)
Project: 330-9776 - North High School - Modernization				
Vendor	Encumbrance	Expenditure	Balance	Description
Go Architects, Inc.	\$180,375.00	(\$27,750.00)	\$152,625.00	Architects Fees
Tilden-Coil Constructors	\$89,687.50	(\$12,031.25)	\$77,656.25	Construction Costs
Project Total:	\$270,062.50	(\$39,781.25)	\$230,281.25	330-9776 - North High School - Modernization

Project: 340-0000 - Poly High School - Marque/Chiller				
Vendor	Encumbrance	Expenditure	Balance	Description
Bravo Sign & Design, Inc.	\$6,358.15	\$0.00	\$6,358.15	Signage
Conserve Landcare, Inc.	\$33,872.00	\$0.00	\$33,872.00	Construction Costs
Fusion Sign And Design, Inc.	\$2,114.11	\$0.00	\$2,114.11	Signage Costs
JPI Development Group, Inc.	\$5,355.15	(\$5,355.15)	\$0.00	Construction Costs
Janus Corporation	\$1,461.84	\$0.00	\$1,461.84	Construction Contractor
MVC Enterprises Inc	\$43,826.05	\$0.00	\$43,826.05	Construction
R.I.S. Electrical Contractors, Inc.	\$142,676.00	\$0.00	\$142,676.00	Electrical Costs
Schroeder Iron Corporation	\$11,547.43	(\$4,750.00)	\$6,797.43	Other Construction
Project Total:	\$247,210.73	(\$10,105.15)	\$237,105.58	340-0000 - Poly High School - Marque/Chiller
Project: 340-9647 - Poly High School - Portable Classroom				
Vendor	Encumbrance	Expenditure	Balance	Description
Construction Electric Inc	\$54,315.09	(\$54,315.09)	\$0.00	Electrical Costs
Koury Engineering & Testing, Inc.	\$16,398.00	\$0.00	\$16,398.00	Engineering Services
Montgomery Hardware Company	\$5,271.08	\$0.00	\$5,271.08	Materials and Supplies
Wolff/Lang/Christopher Architects, Incorporated	\$5,475.00	(\$4,477.50)	\$997.50	Architect Fees
Project Total:	\$81,459.17	(\$58,792.59)	\$22,666.58	340-9647 - Poly High School - Portable Classroom
Project: 340-9676 - Poly High School - Marquee				
Vendor	Encumbrance	Expenditure	Balance	Description
Quiel School Signs	\$74,000.00	\$0.00	\$74,000.00	Signage
Project Total:	\$74,000.00	\$0.00	\$74,000.00	340-9676 - Poly High School - Marquee
Project: 340-9772 - Poly High School - New Construction				
Vendor	Encumbrance	Expenditure	Balance	Description
Apex Fire Protection, Inc.	\$44,383.75	\$0.00	\$44,383.75	Construction Costs
Arrowhead Mechanical, Inc.	\$514,978.55	(\$760.00)	\$514,218.55	Construction Costs
Bogh Engineering Inc.	\$1,710,715.25	(\$38,285.76)	\$1,672,429.49	Engineering Costs
Canyon Steel Fabricators, Inc.	\$241,874.10	\$0.00	\$241,874.10	Construction
Cardinal Environmental Consultants, Inc.	\$4,750.00	\$0.00	\$4,750.00	Environmental Costs
Caston, Inc.	\$380,245.25	(\$924.35)	\$379,320.90	Construction Costs
Construction Electric Inc	\$856,366.17	(\$42,079.30)	\$814,286.87	Electrical Costs
Crew, Inc.	\$460,140.00	(\$79,119.00)	\$381,021.00	Construction Costs

Project: 340-9772 - Poly High School - New Construction				
Vendor	Encumbrance	Expenditure	Balance	Description
Dan Worley Plumbing Inc.	\$299,421.00	(\$14,563.50)	\$284,857.50	Plumbing Contractor
Gafcon, Inc.	\$14,596.00	(\$615.00)	\$13,981.00	Project Management
Geocon West, Inc.	\$176,665.25	(\$28,604.25)	\$148,061.00	Geotechnical Costs
Letner Roofing Co.	\$372,790.00	\$0.00	\$372,790.00	Roofing Costs
Majestic Masonry, Inc.	\$681,232.81	(\$320,623.95)	\$360,608.86	Construction Contractor
Siemens Industry, Inc.	\$9,118.36	\$0.00	\$9,118.36	Engineering Costs
Southland Inspections, Inc.	\$181,980.00	(\$22,140.00)	\$159,840.00	Inspection Costs
Tilden-Coil Constructors	\$959,342.00	\$0.00	\$959,342.00	Construction Costs
Project Total:	\$6,908,598.49	(\$547,715.11)	\$6,360,883.38	340-9772 - Poly High School - New Construction

Project: 340-9776 - Poly High School - Modernization				
Vendor	Encumbrance	Expenditure	Balance	Description
Conserve Landcare, Inc.	\$54,736.90	(\$5,357.05)	\$49,379.85	Construction Costs
Department of General Services	\$14,728.18	(\$14,728.18)	\$0.00	Plan Check Fees
Gafcon, Inc.	\$13,550.00	(\$1,632.00)	\$11,918.00	Project Management
Geocon West, Inc.	\$161,006.01	\$0.00	\$161,006.01	Geotechnical Costs
Hamel Contracting, Inc.	\$243,476.26	(\$124,766.92)	\$118,709.34	Contractor Fees
JPI Development Group, Inc.	\$31,164.00	(\$281.85)	\$30,882.15	Construction Costs
MVC Enterprises Inc	\$235,239.20	\$0.00	\$235,239.20	Construction
R.I.S. Electrical Contractors, Inc.	\$210,449.00	\$0.00	\$210,449.00	Electrical Costs
Schroeder Iron Corporation	\$75,270.45	\$0.00	\$75,270.45	Other Construction
Southland Inspections, Inc.	\$24,480.00	\$0.00	\$24,480.00	Inspection Costs
Technet Partners Inc.	\$1,040.56	\$0.00	\$1,040.56	Technology/Network
Tilden-Coil Constructors	\$73,080.64	(\$73,078.00)	\$2.64	Construction Costs
Wolff/Lang/Christopher Architects, Incorporated	\$667,581.17	(\$62,584.69)	\$604,996.48	Architect Fees
Project Total:	\$1,805,802.37	(\$282,428.69)	\$1,523,373.68	340-9776 - Poly High School - Modernization

Project: 350-0000 - Ramona High School - Prop. 39				
Vendor	Encumbrance	Expenditure	Balance	Description
Elrod Fence Co., Inc.	\$6,890.00	\$0.00	\$6,890.00	Fencing Costs
First Construction Services, Inc.	\$3,000.00	\$0.00	\$3,000.00	Inspection Costs
Leighton Consulting, Inc	\$2,013.80	\$0.00	\$2,013.80	Site Survey
PBK Architects, Inc.	\$179.54	\$0.00	\$179.54	Architect Fees

Project: 350-0000 - Ramona High School - Prop. 39

Vendor	Encumbrance	Expenditure	Balance	Description
River City Testing	\$464.00	\$0.00	\$464.00	Construction Testing
Project Total:	\$12,547.34	\$0.00	\$12,547.34	350-0000 - Ramona High School - Prop. 39

Project: 360-0000 - STEM High School @ UCR - Undistributed

Vendor	Encumbrance	Expenditure	Balance	Description
Cityworks People + Places, Inc.	\$36,287.08	(\$8,783.75)	\$27,503.33	Other Planning Costs
Project Total:	\$36,287.08	(\$8,783.75)	\$27,503.33	360-0000 - STEM High School @ UCR - Undistributed

Project: 360-9772 - STEM High School @ UCR - New Construction

Vendor	Encumbrance	Expenditure	Balance	Description
UCR Regents	\$299,631.00	\$0.00	\$299,631.00	Other Planning Costs
Project Total:	\$299,631.00	\$0.00	\$299,631.00	360-9772 - STEM High School @ UCR - New Construction

Project: 460-9776 - Sunshine Early Childhood Center - Modernization

Vendor	Encumbrance	Expenditure	Balance	Description
Cardinal Environmental Consultants, Inc.	\$5,953.75	(\$5,953.75)	\$0.00	Environmental Costs
Daniel's Electrical Construction	\$718,705.84	(\$428,295.21)	\$290,410.63	Electrical Costs
Empyrean Plumbing, Inc.	\$155,764.19	(\$30,609.00)	\$125,155.19	Plumbing Costs
Erickson-Hall Construction Co.	\$215,989.86	(\$87,000.00)	\$128,989.86	Construction Management
Gafcon, Inc.	\$16,626.36	(\$828.00)	\$15,798.36	Project Management
Go Architects, Inc.	\$129,257.40	(\$19,885.38)	\$109,372.02	Architects Fees
Inland Building Construction Companies, Inc.	\$2,376,007.12	(\$373,907.97)	\$2,002,099.15	Construction Costs
Inland Inspections & Consulting	\$105,455.00	(\$35,002.50)	\$70,452.50	Consultant Costs
Leighton Consulting, Inc	\$19,564.30	(\$4,701.00)	\$14,863.30	Site Survey
Project Total:	\$3,743,323.82	(\$986,182.81)	\$2,757,141.01	460-9776 - Sunshine Early Childhood Center - Modernization

Project: 498-0000 - Riverside Adult School - Undistributed

Vendor	Encumbrance	Expenditure	Balance	Description
Dalke & Sons Construction, Inc.	\$5,074.05	\$0.00	\$5,074.05	Construction Costs
Golden West Moving Systems, Inc.	\$1,890.00	(\$1,890.00)	\$0.00	Moving Costs
Technet Partners Inc.	\$9,695.38	\$0.00	\$9,695.38	Technology/Network
Project Total:	\$16,659.43	(\$1,890.00)	\$14,769.43	498-0000 - Riverside Adult School - Undistributed

Project: 499-0000 - Educational Options Center - Undistributed (CLOSED)

Vendor	Encumbrance	Expenditure	Balance	Description
Formillus Architecture	\$5,895.00	(\$5,895.00)	\$0.00	Architect Fees
New Vendor	\$540,500.00	\$0.00	\$540,500.00	
Project Total:	\$546,395.00	(\$5,895.00)	\$540,500.00	499-0000 - Educational Options Center - Undistributed (CLOSED)

Project: 605-0000 - Business Services - Undistributed (CLOSED)

Vendor	Encumbrance	Expenditure	Balance	Description
Riverside Unified School District	\$10,412.30	(\$1,791.05)	\$8,621.25	Project Planning
Southern California Schools Employee Benefits Asso	\$23.56	(\$23.56)	\$0.00	Project Planning
U.S. Bank Global Corp Trust Services	\$2,970.00	\$0.00	\$2,970.00	Consultant Costs
Project Total:	\$13,405.86	(\$1,814.61)	\$11,591.25	605-0000 - Business Services - Undistributed (CLOSED)

Project: 612-0000 - Facilities Projects - Undistributed (CLOSED)

Vendor	Encumbrance	Expenditure	Balance	Description
Atkinson, Andelson, Loya, Ruud &	\$57,223.58	(\$10,376.06)	\$46,847.52	Legal Costs
BLX Group	\$4,350.00	\$0.00	\$4,350.00	Consultant Costs
Best, Best, & Krieger, LLP	\$1,375.10	\$0.00	\$1,375.10	Architect Fees
California Financial Services	\$9,687.50	(\$9,687.50)	\$0.00	Project Planning & Support
Colbi Technologies, Inc.	\$140,341.81	(\$73,812.50)	\$66,529.31	Software Support
Cordoba Corporation	\$321,441.25	(\$44,272.52)	\$277,168.73	Construction Management
Decision Insite LLC	\$46,112.00	\$0.00	\$46,112.00	Software License
Division Of The State Architect	\$750.00	(\$750.00)	\$0.00	Plan Check Fees
Educational Facility Services	\$31,800.00	\$0.00	\$31,800.00	Consultant
Environmental Systems Research Institute, Inc.	\$2,550.00	\$0.00	\$2,550.00	Environmental Costs
Label'd Ink	\$1,020.96	\$0.00	\$1,020.96	Other Costs
Metropolitan Life Insurance Company	\$12.84	(\$12.84)	\$0.00	District Support Costs
Powerschool Group LLC	\$62,160.00	(\$1,680.00)	\$60,480.00	Technology Consultant
Riverside Unified School District	\$51,064.90	(\$7,046.66)	\$44,018.24	Project Planning
School Advisors	\$153,750.00	\$0.00	\$153,750.00	Project Planning Support
Southern California Schools Employee Benefits Asso	\$65.90	(\$65.90)	\$0.00	Project Planning
Tao Rossini, A Professional Corporation	\$1,705.00	(\$1,705.00)	\$0.00	Legal Consulting Services
Project Total:	\$885,410.84	(\$149,408.98)	\$736,001.86	612-0000 - Facilities Projects - Undistributed (CLOSED)

Project: 612-9776 - Facilities Projects - Modernization				
Vendor	Encumbrance	Expenditure	Balance	Description
B Safe Playground Inspection Services Inc	\$4,650.00	\$0.00	\$4,650.00	Inspection Services
Project Total:	\$4,650.00	\$0.00	\$4,650.00	612-9776 - Facilities Projects - Modernization
Project: 689-0000 - District Office - Undistributed				
Vendor	Encumbrance	Expenditure	Balance	Description
HMC Architects	\$293,468.46	\$0.00	\$293,468.46	Architect Fees
PCM3, Inc.	\$300,000.00	\$0.00	\$300,000.00	Construction Management
Project Total:	\$593,468.46	\$0.00	\$593,468.46	689-0000 - District Office - Undistributed
Project: 719-0000 - Board Room Modernization				
Vendor	Encumbrance	Expenditure	Balance	Description
Harley Ellis Devereaux Corporation	\$58,196.11	\$0.00	\$58,196.11	Architect Fees
Project Total:	\$58,196.11	\$0.00	\$58,196.11	719-0000 - Board Room Modernization
Project: 721-0000 - Casa Blanca - Undistributed				
Vendor	Encumbrance	Expenditure	Balance	Description
Linscott, Law & Greenspan Engineers	\$4,375.00	\$0.00	\$4,375.00	Engineering Consultant
Project Total:	\$4,375.00	\$0.00	\$4,375.00	721-0000 - Casa Blanca - Undistributed
Project: 721-9772 - Casa Blanca - New Construction				
Vendor	Encumbrance	Expenditure	Balance	Description
C Below, Inc.	\$38.00	\$0.00	\$38.00	Supplies
FUSCOE Engineering Inc.	\$7,770.00	\$0.00	\$7,770.00	Engineering Services
Go Architects, Inc.	\$154,375.00	(\$23,750.00)	\$130,625.00	Architects Fees
Tilden-Coil Constructors	\$153,124.99	(\$18,229.17)	\$134,895.82	Construction Costs
Project Total:	\$315,307.99	(\$41,979.17)	\$273,328.82	721-9772 - Casa Blanca - New Construction
Project: 722-9772 - Eastside - New Construction				
Vendor	Encumbrance	Expenditure	Balance	Description
Cardinal Environmental Consultants, Inc.	\$2,250.00	\$0.00	\$2,250.00	Environmental Costs
Elrod Fence Co., Inc.	\$9,050.00	\$0.00	\$9,050.00	Fencing Costs
FirstCarbon Solutions	\$23,740.00	(\$11,992.00)	\$11,748.00	Energy Management
Glen Oaks Escrow	(\$699.00)	\$699.00	\$0.00	Escrow
Overland, Pacific & Cutler LLC	\$24,854.72	(\$4,506.25)	\$20,348.47	Real Estate Services

Project: 722-9772 - Eastside - New Construction				
Vendor	Encumbrance	Expenditure	Balance	Description
Oxbridge Development Inc.	\$23,706.25	\$0.00	\$23,706.25	Other Planning Costs
PBK Architects, Inc.	\$237,500.00	\$0.00	\$237,500.00	Architect Fees
Placeworks	\$146,132.41	(\$10,757.75)	\$135,374.66	Community Planning & Design
Southern California News Group	\$3,161.20	\$0.00	\$3,161.20	Advertising
Southwest Site Services	\$2,375.00	(\$1,101.52)	\$1,273.48	Site Costs
Project Total:	\$472,070.58	(\$27,658.52)	\$444,412.06	722-9772 - Eastside - New Construction
Project: 722-9776 - Eastside - Modernization				
Vendor	Encumbrance	Expenditure	Balance	Description
Interior Demolition, Inc.	\$70,590.00	\$0.00	\$70,590.00	Demolition Costs
Project Total:	\$70,590.00	\$0.00	\$70,590.00	722-9776 - Eastside - Modernization
Project: 727-0000 - LAC748 Cell Tower - Undistributed				
Vendor	Encumbrance	Expenditure	Balance	Description
Inland Inspections & Consulting	\$13,867.50	\$0.00	\$13,867.50	Consultant Costs
Project Total:	\$13,867.50	\$0.00	\$13,867.50	727-0000 - LAC748 Cell Tower - Undistributed
Project: 802-0000 - CFD #2 - Undistributed				
Vendor	Encumbrance	Expenditure	Balance	Description
Best, Best, & Krieger, LLP	\$928.00	\$0.00	\$928.00	Architect Fees
Project Total:	\$928.00	\$0.00	\$928.00	802-0000 - CFD #2 - Undistributed
Project: 806-0000 - CFD #3 - Undistributed				
Vendor	Encumbrance	Expenditure	Balance	Description
Best, Best, & Krieger, LLP	\$36.00	\$0.00	\$36.00	Architect Fees
Project Total:	\$36.00	\$0.00	\$36.00	806-0000 - CFD #3 - Undistributed
Project: 808-0000 - CFD #4 - Undistributed				
Vendor	Encumbrance	Expenditure	Balance	Description
Best, Best, & Krieger, LLP	\$2,749.00	\$0.00	\$2,749.00	Architect Fees
Project Total:	\$2,749.00	\$0.00	\$2,749.00	808-0000 - CFD #4 - Undistributed

Project: 812-0000 - CFD #6 - Undistributed				
Vendor	Encumbrance	Expenditure	Balance	Description
Best, Best, & Krieger, LLP	\$1,777.00	\$0.00	\$1,777.00	Architect Fees
Riverside Unified School District	\$1,718.49	(\$1,718.49)	\$0.00	Project Planning
Project Total:	\$3,495.49	(\$1,718.49)	\$1,777.00	812-0000 - CFD #6 - Undistributed
Project: 814-0000 - CFD #6 Area 2 - Undistributed				
Vendor	Encumbrance	Expenditure	Balance	Description
Best, Best, & Krieger, LLP	\$2,800.00	\$0.00	\$2,800.00	Architect Fees
Project Total:	\$2,800.00	\$0.00	\$2,800.00	814-0000 - CFD #6 Area 2 - Undistributed
Project: 816-0000 - CFD #7 - Undistributed				
Vendor	Encumbrance	Expenditure	Balance	Description
Best, Best, & Krieger, LLP	\$4,430.82	\$0.00	\$4,430.82	Architect Fees
Project Total:	\$4,430.82	\$0.00	\$4,430.82	816-0000 - CFD #7 - Undistributed
Project: 818-0000 - CFD #8 - Undistributed				
Vendor	Encumbrance	Expenditure	Balance	Description
Best, Best, & Krieger, LLP	\$2,398.00	(\$140.00)	\$2,258.00	Architect Fees
Project Total:	\$2,398.00	(\$140.00)	\$2,258.00	818-0000 - CFD #8 - Undistributed
Project: 819-0000 - CFD #9 Area 1, 3 & 5 - Undistributed				
Vendor	Encumbrance	Expenditure	Balance	Description
Best, Best, & Krieger, LLP	\$3,851.50	\$0.00	\$3,851.50	Architect Fees
Project Total:	\$3,851.50	\$0.00	\$3,851.50	819-0000 - CFD #9 Area 1, 3 & 5 - Undistributed
Project: 820-0000 - CFD #9 Area 2 - Undistributed				
Vendor	Encumbrance	Expenditure	Balance	Description
Best, Best, & Krieger, LLP	\$2,600.00	\$0.00	\$2,600.00	Architect Fees
Project Total:	\$2,600.00	\$0.00	\$2,600.00	820-0000 - CFD #9 Area 2 - Undistributed
Project: 821-0000 - CFD #9 Area 4 - Undistributed				
Vendor	Encumbrance	Expenditure	Balance	Description
Best, Best, & Krieger, LLP	\$1,725.00	\$0.00	\$1,725.00	Architect Fees
Project Total:	\$1,725.00	\$0.00	\$1,725.00	821-0000 - CFD #9 Area 4 - Undistributed

Project: 822-0000 - CFD #10 - Undistributed				
Vendor	Encumbrance	Expenditure	Balance	Description
Best, Best, & Krieger, LLP	\$5,257.00	(\$230.00)	\$5,027.00	Architect Fees
Project Total:	\$5,257.00	(\$230.00)	\$5,027.00	822-0000 - CFD #10 - Undistributed
Project: 823-0000 - CFD #11 - Undistributed				
Vendor	Encumbrance	Expenditure	Balance	Description
Best, Best, & Krieger, LLP	\$5,082.50	(\$230.00)	\$4,852.50	Architect Fees
Project Total:	\$5,082.50	(\$230.00)	\$4,852.50	823-0000 - CFD #11 - Undistributed
Project: 824-0000 - CFD #12 - Undistributed				
Vendor	Encumbrance	Expenditure	Balance	Description
Best, Best, & Krieger, LLP	\$2,582.50	(\$140.00)	\$2,442.50	Architect Fees
Certificate Investor	\$273,540.29	(\$273,540.29)	\$0.00	Debt Service Payment
Project Total:	\$276,122.79	(\$273,680.29)	\$2,442.50	824-0000 - CFD #12 - Undistributed
Project: 825-0000 - CFD #13 Area 1 - Undistributed (CLOSED)				
Vendor	Encumbrance	Expenditure	Balance	Description
Best, Best, & Krieger, LLP	\$1,600.00	(\$1,433.20)	\$166.80	Architect Fees
Project Total:	\$1,600.00	(\$1,433.20)	\$166.80	825-0000 - CFD #13 Area 1 - Undistributed (CLOSED)
Project: 826-0000 - CFD #14 - Undistributed				
Vendor	Encumbrance	Expenditure	Balance	Description
Best, Best, & Krieger, LLP	\$13,687.33	\$0.00	\$13,687.33	Architect Fees
Project Total:	\$13,687.33	\$0.00	\$13,687.33	826-0000 - CFD #14 - Undistributed
Project: 827-0000 - CFD #15 - Undistributed				
Vendor	Encumbrance	Expenditure	Balance	Description
Best, Best, & Krieger, LLP	\$2,658.00	(\$36.40)	\$2,621.60	Architect Fees
U.S. Bank Global Corp Trust Services	\$443.54	(\$443.54)	\$0.00	Consultant Costs
Project Total:	\$3,101.54	(\$479.94)	\$2,621.60	827-0000 - CFD #15 - Undistributed
Project: 828-0000 - CFD #19 (Spring Mountain Ranch) - Undistributed (CLOSED)				
Vendor	Encumbrance	Expenditure	Balance	Description
Best, Best, & Krieger, LLP	\$8,000.00	\$0.00	\$8,000.00	Architect Fees
Project Total:	\$8,000.00	\$0.00	\$8,000.00	828-0000 - CFD #19 (Spring Mountain Ranch) - Undistributed (CLOSED)

Project: 829-0000 - CFD #16 - Undistributed				
Vendor	Encumbrance	Expenditure	Balance	Description
Best, Best, & Krieger, LLP	\$1,932.50	(\$140.00)	\$1,792.50	Architect Fees
Project Total:	\$1,932.50	(\$140.00)	\$1,792.50	829-0000 - CFD #16 - Undistributed
Project: 830-0000 - CFD #18 - Undistributed				
Vendor	Encumbrance	Expenditure	Balance	Description
Best, Best, & Krieger, LLP	\$2,533.50	(\$140.00)	\$2,393.50	Architect Fees
Project Total:	\$2,533.50	(\$140.00)	\$2,393.50	830-0000 - CFD #18 - Undistributed
Project: 831-0000 - CFD #17 - Undistributed				
Vendor	Encumbrance	Expenditure	Balance	Description
Best, Best, & Krieger, LLP	\$2,433.50	(\$140.00)	\$2,293.50	Architect Fees
Project Total:	\$2,433.50	(\$140.00)	\$2,293.50	831-0000 - CFD #17 - Undistributed
Project: 832-0000 - CFD #20 - Undistributed				
Vendor	Encumbrance	Expenditure	Balance	Description
BLX Group	\$725.00	\$0.00	\$725.00	Consultant Costs
Best, Best, & Krieger, LLP	\$2,106.00	(\$50.00)	\$2,056.00	Architect Fees
Project Total:	\$2,831.00	(\$50.00)	\$2,781.00	832-0000 - CFD #20 - Undistributed
Project: 833-0000 - CFD #21 - Undistributed				
Vendor	Encumbrance	Expenditure	Balance	Description
Best, Best, & Krieger, LLP	\$2,800.00	\$0.00	\$2,800.00	Architect Fees
Project Total:	\$2,800.00	\$0.00	\$2,800.00	833-0000 - CFD #21 - Undistributed
Project: 834-0000 - CFD #22 - Undistributed				
Vendor	Encumbrance	Expenditure	Balance	Description
Best, Best, & Krieger, LLP	\$2,236.00	(\$140.00)	\$2,096.00	Architect Fees
Project Total:	\$2,236.00	(\$140.00)	\$2,096.00	834-0000 - CFD #22 - Undistributed
Project: 836-0000 - CFD #24 - Undistributed				
Vendor	Encumbrance	Expenditure	Balance	Description
Best, Best, & Krieger, LLP	\$4,412.10	(\$326.40)	\$4,085.70	Architect Fees
Project Total:	\$4,412.10	(\$326.40)	\$4,085.70	836-0000 - CFD #24 - Undistributed

Project: 838-0000 - CFD #26 - Undistributed

Vendor	Encumbrance	Expenditure	Balance	Description
BLX Group	\$725.00	\$0.00	\$725.00	Consultant Costs
Best, Best, & Krieger, LLP	\$2,423.50	(\$140.00)	\$2,283.50	Architect Fees
Project Total:	\$3,148.50	(\$140.00)	\$3,008.50	838-0000 - CFD #26 - Undistributed

Project: 839-0000 - CFD #27 - Undistributed

Vendor	Encumbrance	Expenditure	Balance	Description
Best, Best, & Krieger, LLP	\$2,233.50	(\$140.00)	\$2,093.50	Architect Fees
David Taussig And Associates, Inc.	\$345.68	\$0.00	\$345.68	Consultant Costs
Project Total:	\$2,579.18	(\$140.00)	\$2,439.18	839-0000 - CFD #27 - Undistributed

Project: 841-0000 - CFD #29 - Undistributed

Vendor	Encumbrance	Expenditure	Balance	Description
Best, Best, & Krieger, LLP	\$31,740.00	(\$50.00)	\$31,690.00	Architect Fees
Project Total:	\$31,740.00	(\$50.00)	\$31,690.00	841-0000 - CFD #29 - Undistributed

Project: 842-0000 - CFD #15 Area 2 - Undistributed

Vendor	Encumbrance	Expenditure	Balance	Description
Best, Best, & Krieger, LLP	\$2,795.30	(\$286.54)	\$2,508.76	Architect Fees
Project Total:	\$2,795.30	(\$286.54)	\$2,508.76	842-0000 - CFD #15 Area 2 - Undistributed

Project: 843-0000 - CFD #15 Area 3 - Undistributed

Vendor	Encumbrance	Expenditure	Balance	Description
BLX Group	\$1,450.00	\$0.00	\$1,450.00	Consultant Costs
Best, Best, & Krieger, LLP	\$2,600.00	\$0.00	\$2,600.00	Architect Fees
Project Total:	\$4,050.00	\$0.00	\$4,050.00	843-0000 - CFD #15 Area 3 - Undistributed

Project: 845-0000 - CFD #31 - Undistributed

Vendor	Encumbrance	Expenditure	Balance	Description
Best, Best, & Krieger, LLP	\$5,000.00	(\$140.00)	\$4,860.00	Architect Fees
Project Total:	\$5,000.00	(\$140.00)	\$4,860.00	845-0000 - CFD #31 - Undistributed

Project: 846-0000 - CFD #32 - Undistributed

Vendor	Encumbrance	Expenditure	Balance	Description
BLX Group	\$2,900.00	(\$1,450.00)	\$1,450.00	Consultant Costs

Project: 846-0000 - CFD #32 - Undistributed

Vendor	Encumbrance	Expenditure	Balance	Description
Best, Best, & Krieger, LLP	\$5,000.00	(\$151.60)	\$4,848.40	Architect Fees
Project Total:	\$7,900.00	(\$1,601.60)	\$6,298.40	846-0000 - CFD #32 - Undistributed

Project: 847-0000 - CFD #33 - Undistributed

Vendor	Encumbrance	Expenditure	Balance	Description
BLX Group	\$1,450.00	\$0.00	\$1,450.00	Consultant Costs
Best, Best, & Krieger, LLP	\$10,000.00	(\$140.00)	\$9,860.00	Architect Fees
Project Total:	\$11,450.00	(\$140.00)	\$11,310.00	847-0000 - CFD #33 - Undistributed

Project: 848-0000 - CFD #21 Area 1 - Undistributed

Vendor	Encumbrance	Expenditure	Balance	Description
Best, Best, & Krieger, LLP	\$39,028.50	\$0.00	\$39,028.50	Architect Fees
David Taussig And Associates, Inc.	\$809.13	\$0.00	\$809.13	Consultant Costs
Project Total:	\$39,837.63	\$0.00	\$39,837.63	848-0000 - CFD #21 Area 1 - Undistributed

Project: 849-0000 - CFD #21 Area 3 - Undistributed

Vendor	Encumbrance	Expenditure	Balance	Description
Best, Best, & Krieger, LLP	\$39,734.00	\$0.00	\$39,734.00	Architect Fees
Project Total:	\$39,734.00	\$0.00	\$39,734.00	849-0000 - CFD #21 Area 3 - Undistributed

Project: 852-0000 - CFD #34 - Undistributed

Vendor	Encumbrance	Expenditure	Balance	Description
BLX Group	\$1,450.00	(\$1,450.00)	\$0.00	Consultant Costs
Best, Best, & Krieger, LLP	\$49,698.50	(\$140.00)	\$49,558.50	Architect Fees
Project Total:	\$51,148.50	(\$1,590.00)	\$49,558.50	852-0000 - CFD #34 - Undistributed

Project: 853-0000 - CFD #35 - Undistributed

Vendor	Encumbrance	Expenditure	Balance	Description
BLX Group	\$1,450.00	\$0.00	\$1,450.00	Consultant Costs
Best, Best, & Krieger, LLP	\$42,625.50	\$0.00	\$42,625.50	Architect Fees
Project Total:	\$44,075.50	\$0.00	\$44,075.50	853-0000 - CFD #35 - Undistributed

Project: 854-0000 - CFD #36 - Undistributed				
Vendor	Encumbrance	Expenditure	Balance	Description
Best, Best, & Krieger, LLP	\$39,725.00	\$0.00	\$39,725.00	Architect Fees
Project Total:	\$39,725.00	\$0.00	\$39,725.00	854-0000 - CFD #36 - Undistributed
Project: 855-0000 - CFD #37 - Undistributed				
Vendor	Encumbrance	Expenditure	Balance	Description
Best, Best, & Krieger, LLP	\$25,177.17	\$0.00	\$25,177.17	Architect Fees
David Taussig And Associates, Inc.	\$6,436.83	\$0.00	\$6,436.83	Consultant Costs
Project Total:	\$31,614.00	\$0.00	\$31,614.00	855-0000 - CFD #37 - Undistributed
Project: 856-0000 - CFD #38 - Undistributed				
Vendor	Encumbrance	Expenditure	Balance	Description
Best, Best, & Krieger, LLP	\$12,089.50	\$0.00	\$12,089.50	Architect Fees
Southern California News Group	\$4,522.20	\$0.00	\$4,522.20	Advertising
Project Total:	\$16,611.70	\$0.00	\$16,611.70	856-0000 - CFD #38 - Undistributed
Project: 898-0000 - Financing Authority Administration - Undistributed				
Vendor	Encumbrance	Expenditure	Balance	Description
BLX Group	\$1,450.00	\$0.00	\$1,450.00	Consultant Costs
Project Total:	\$1,450.00	\$0.00	\$1,450.00	898-0000 - Financing Authority Administration - Undistributed
Project: 899-0000 - CFD - Administration - Undistributed				
Vendor	Encumbrance	Expenditure	Balance	Description
Applied Best Practices	\$30,000.00	(\$16,556.89)	\$13,443.11	Consulting Costs
Metropolitan Life Insurance Company	\$5.84	(\$5.84)	\$0.00	District Support Costs
Riverside Unified School District	\$53,003.68	(\$8,831.88)	\$44,171.80	Project Planning
Southern California Schools Employee Benefits Asso	\$105.07	(\$105.07)	\$0.00	Project Planning
Project Total:	\$83,114.59	(\$25,499.68)	\$57,614.91	899-0000 - CFD - Administration - Undistributed
Grand Total:	\$88,731,347.30	(\$19,150,246.67)	\$69,581,100.63	Riverside Unified School District

Completed Measure O Projects



Sierra Middle School

Measure O Campus Improvements

Project Description

Sierra Middle School was built in 1957. Under Measure O, Sierra Middle School will receive a light, medium and heavy modernization. The different stages of modernization consist of HVAC replacement, light and fire alarm upgrades, ADA accessibility improvements, renovation of SDC classrooms, interior finishes and parking lot expansion.

Project Group:	Group A
Architect:	TBP Architects
DSA Status:	Approved on February 19, 2018
Construction:	Completed – November 2019
Construction Status:	Completed
Total Project Cost:	\$8,576,180

Project Status

This project has been completed

Sierra Middle School

Completed Project Pictures



HVAC start up on Gymnasium roof



Front fence and handrails

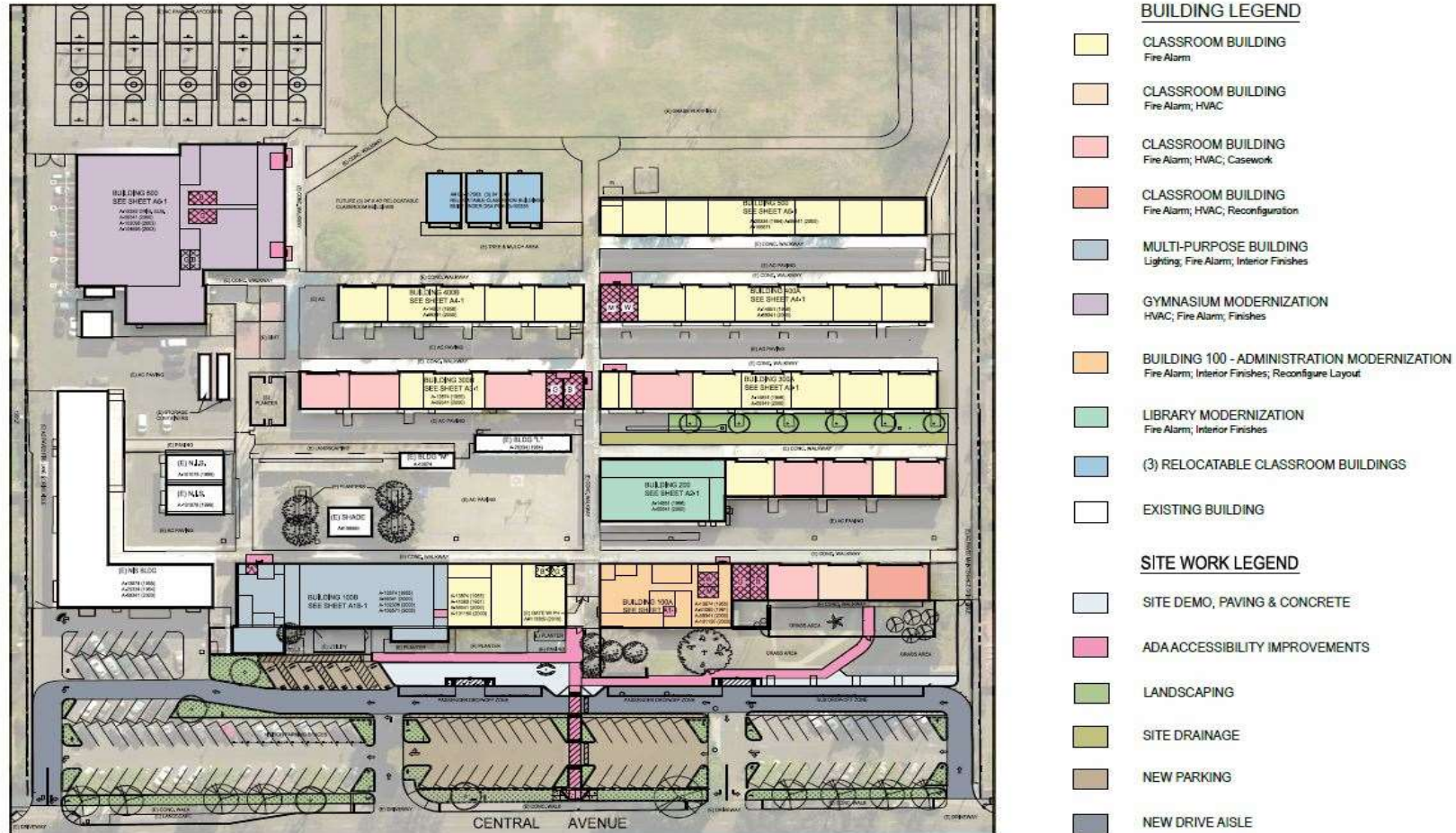
Sierra Middle School

Existing Site Plan



Sierra Middle School

New Site Plan



Sierra Middle School

Project Renderings



Highgrove Elementary School

Measure O Campus Improvements

Project Description

Highgrove Elementary School was built in 1956. The site currently has 26 portable classroom buildings. Under Measure O, Highgrove Elementary School will receive general site improvements, including grading, utilities, paving, new parking and drop-off, a new kinder two-story classroom building with 12 classrooms, and a new HVAC system, playground equipment, roof replacement, interior finishes, and accessibility upgrades.

Project Group:	Group A
Architect:	Ruhnau Clarke Architects
DSA Status:	Approved on February 6, 2019
Bidding & Award:	Completed
Construction:	Completed – August 2020
Project Budget:	\$24,538,218

Project Status

- ✓ This project is complete
- ✓ The CBOC committee held a meeting at Highgrove on January 29, 2020 and took a tour of the modernized school

Highgrove Elementary School

Completed Construction Pictures



New classroom & furniture



New HVAC Units



New grass and sidewalks

Highgrove Elementary School

Completed Construction Pictures



New landscaping between existing buildings



New workrooms



New kinder play area

Highgrove Elementary School

Existing Site Plan



Highgrove Elementary School

Project Rendering



Harrison Elementary School

Measure O Campus Improvements

Project Description

Harrison Elementary School was built in 1964. The site has 11 portable classroom buildings. Under Measure O, Harrison Elementary School will receive various improvements including new parking and drop-off area, new classroom building with 5 classrooms, new HVAC system, new frontage to administration, and removal of portables.

Project Group:	Group A
Architect:	ATI Architects & Engineers
DSA Status:	Approved on March 7, 2019
Bidding & Award:	Completed
Construction:	Completed - April 2021
Project Budget:	\$12,369,531

Project Status

- ✓ Landscaping has been completed
- ✓ Final notices of completion will be submitted to the Board on July 15, 2021

Harrison Elementary School

Completed Construction Pictures



Completed Administration Building



New Classroom Building



Harrison Elementary School

Project Rendering



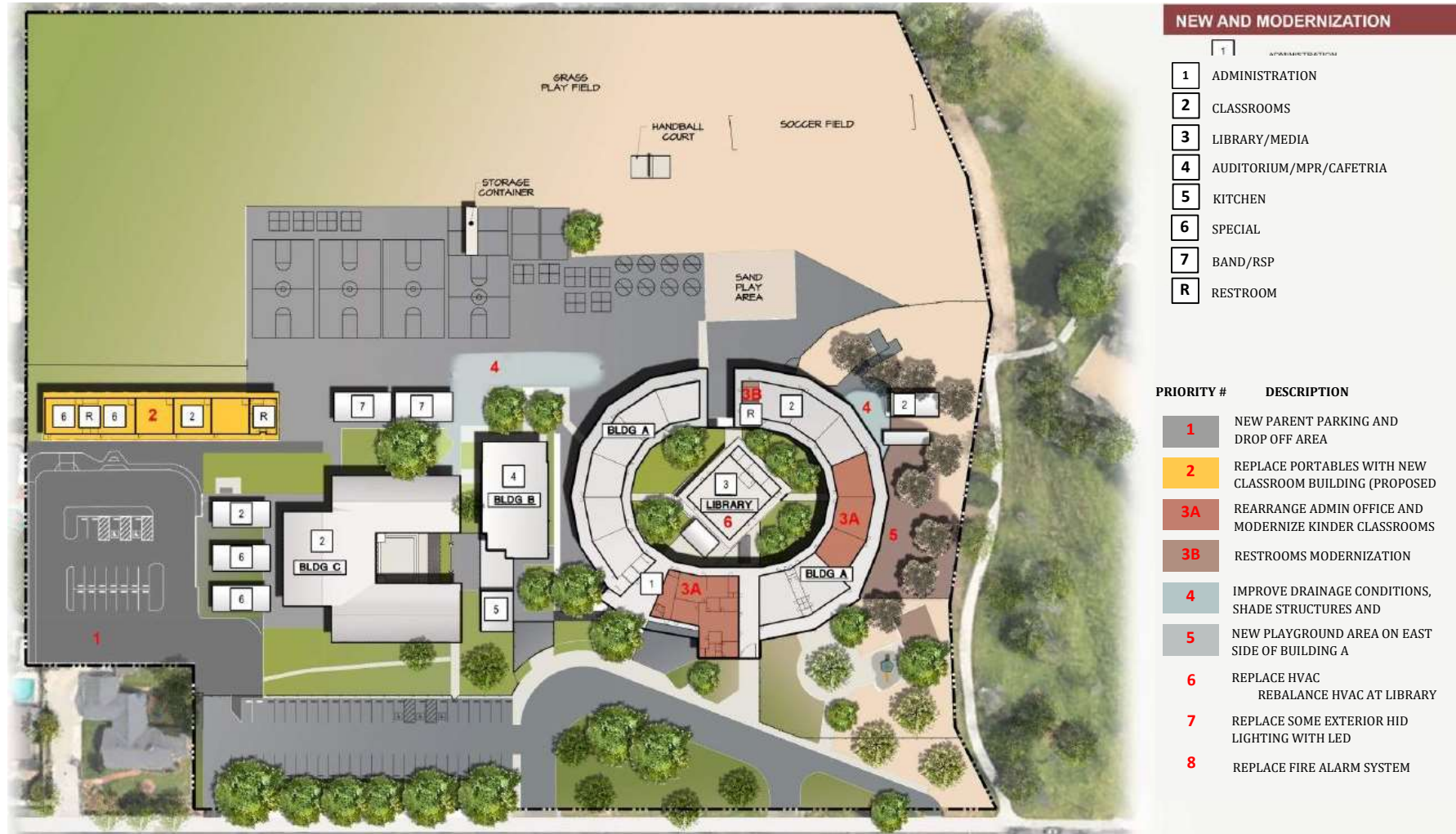
Harrison Elementary School

Existing Site Plan



Harrison Elementary School

New Site Plan



Jefferson Elementary School

Measure O Campus Improvements

Project Description

Jefferson Elementary School was built in 1948. The site currently has 16 portable classroom buildings. Under Measure O, Jefferson Elementary School will receive a new 1-story 6 kinder classroom building and corresponding new playground area, full modernization of Buildings M and N including sinks, cabinetry, roofing, HVAC, windows, lighting, paint, drinking fountain replacement, and upgrades to restroom facilities and demolition of 5 classrooms.

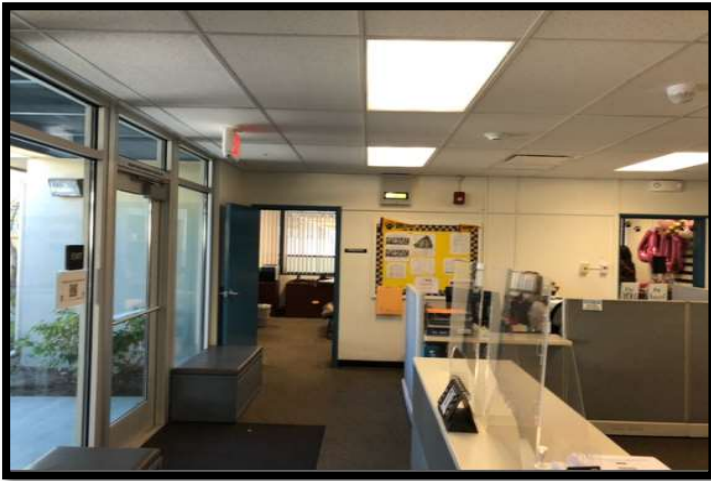
Project Group:	Group A
Architect:	WLC Architects
DSA Status:	Approved on February 28, 2019
Bidding & Award:	Completed
Construction:	Completed – April 2021
Project Budget:	\$18,407,115

Project Status

- ✓ All construction has been completed
- ✓ The project is under its 1 year warranty period

Jefferson Elementary School

Completed Construction Pictures



Administration Remodel Building



Multi Purpose Room



New Kinder Wing

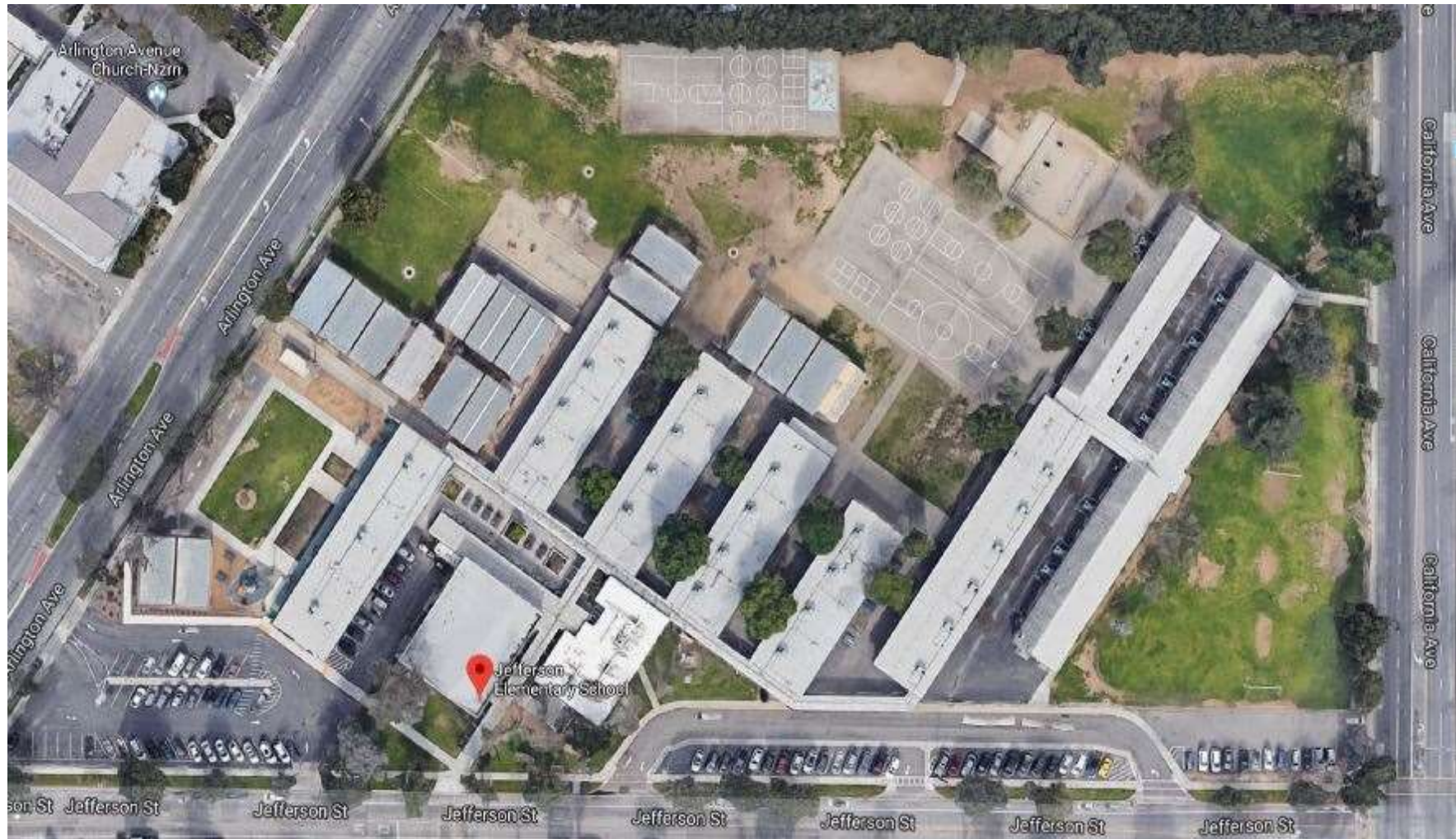
Jefferson Elementary School

Kinder Exterior Building Rendering



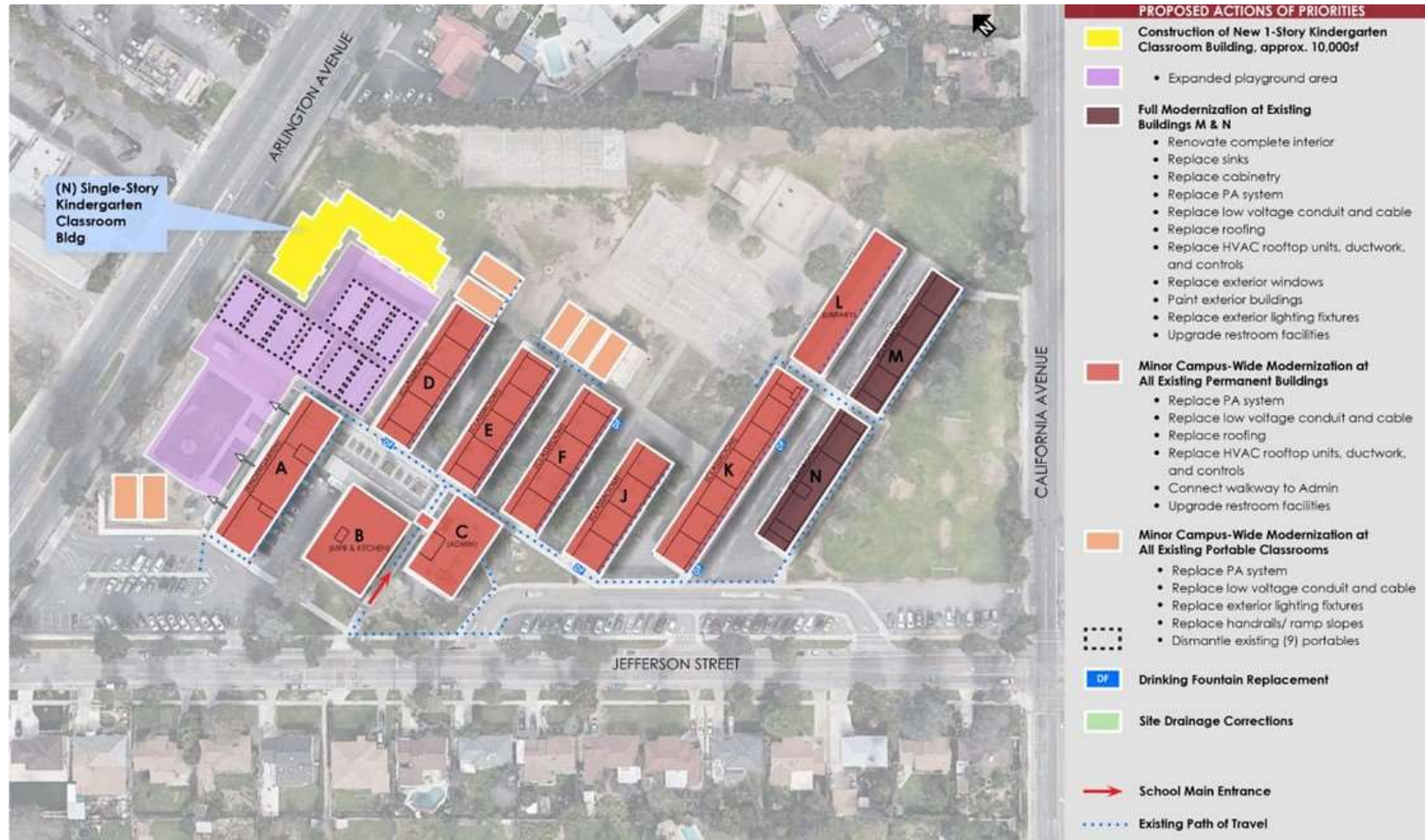
Jefferson Elementary School

Existing Site Plan



Jefferson Elementary School

New Site Plan



Madison Elementary School

Measure O Campus Improvements

Project Description

Madison Elementary School was built in 1952 on a 10 acres site. The site currently has 22 portable classroom buildings. Under Measure O, Madison Elementary School will receive a new 5 kinder classroom building, new kinder play area, new drop-off and parking lot, new lunch shelter, curb appeal improvements, and removal of 5 portables.

Project Group:	Group A
Architect:	LPA Architects
DSA Status:	Approved on March 29, 2019
Bidding & Award:	Completed
Construction:	Completed – June 2021
Project Budget:	\$18,631,461

Project Status

Building G

- ✓ Building G new kinder wing is completed and occupied
- ✓ Playground equipment and ball courts have been completed
- ✓ lunch shelter and relocated lunch shelter are being used
- ✓ Interim housing portables have been removed from site

Building A

- ✓ Completed minor warranty items ongoing

Madison Elementary School

Completed Construction Pictures



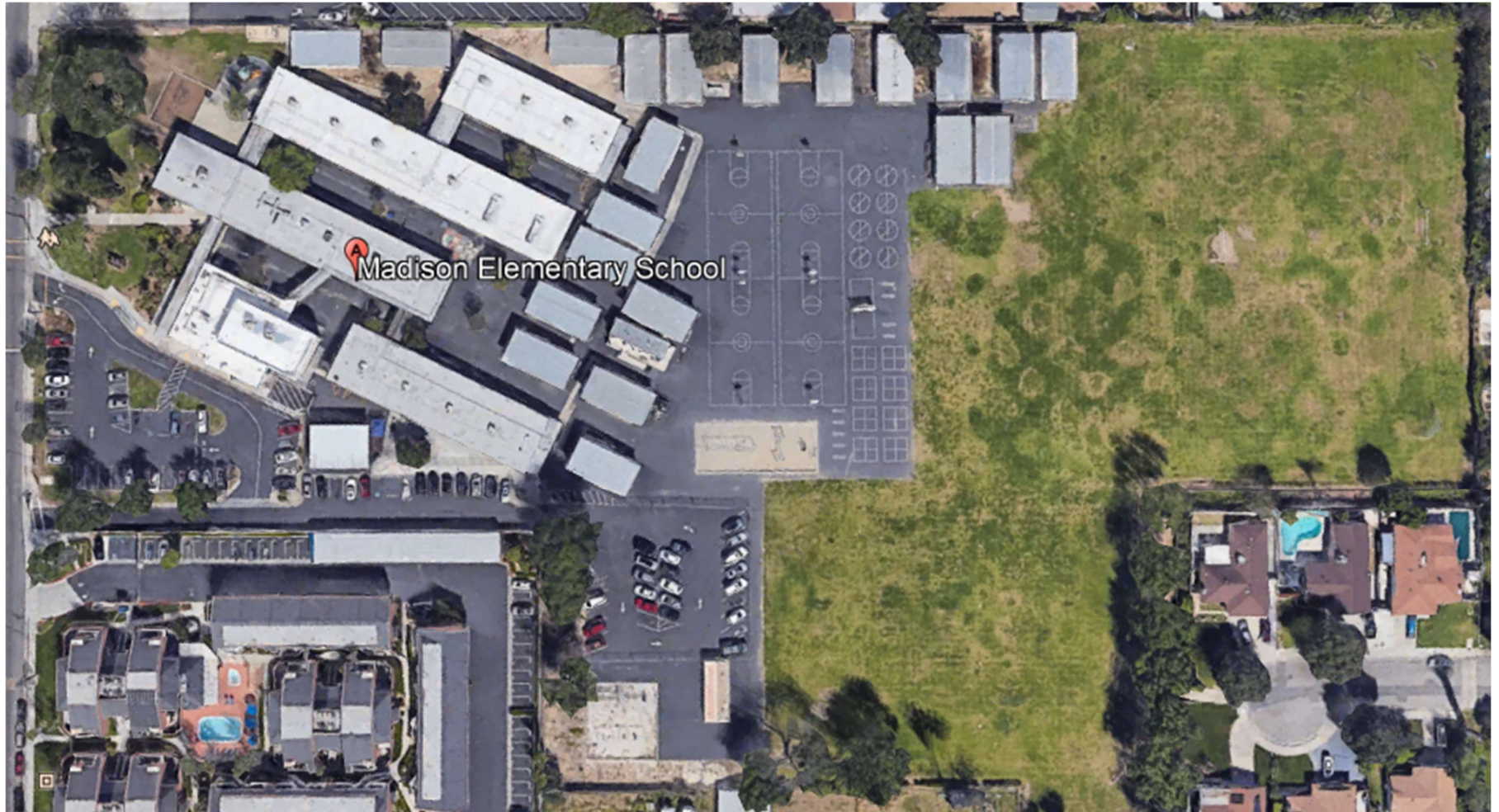
Madison Elementary School

Project Renderings



Madison Elementary School

Existing Site Plan



Madison Elementary School

New Site Plan

