



# Riverside Unified School District

## Citizens' Bond Oversight Committee Report

(Financial Data as of 5/31/2021)

July 8, 2021 Meeting

Report by:



3380 14th Street | Riverside, CA 92501  
(951) 788-7135 [www.riversideunified.org](http://www.riversideunified.org)

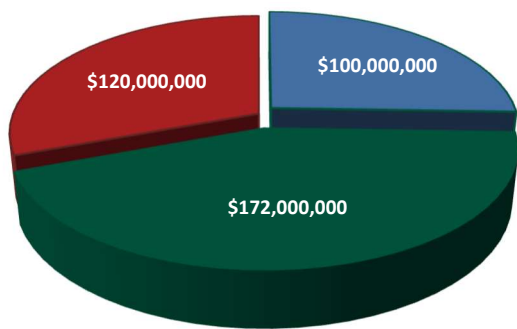


### Committee Members

- ✓ Art Alcaraz
- ✓ David Bristow
- ✓ Martin De Campo
- ✓ Amanda DeLao
- ✓ Tom Evans
- ✓ Bob Garcia
- ✓ Tina Grande-Field
- ✓ Diane Kwasman
- ✓ Lara E. Martin
- ✓ Keith Nelson
- ✓ Marilyn Robinson
- ✓ Sarah Simpson
- ✓ Terry Walling

(CBOC Members as of July 2021)

### Measure O Authorization



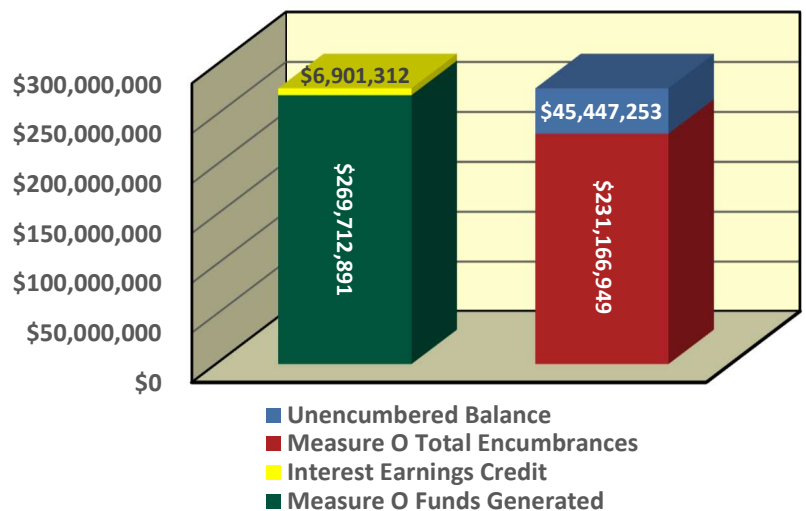
- G.O. Bonds Election of 2016, 2017 (Series A)
- G.O. Bonds Election of 2016, 2019 (Series B)
- Remaining Measure O Authorization - Pending

## Measure O Overview

On November 8, 2016, the voters of the Riverside Unified School District approved Measure O General Obligation Bonds (the “Bonds”) with a 70% approval rate. Measure O will generate \$392 million dollars over the next 10 to 15 years to improve and build new capital facilities in Riverside Unified.

The Bonds will be used to repair and upgrade District aging school infrastructure, classrooms and buildings, build new schools, modernize school facilities with 21st century technology, improve access for students with disabilities, provide classroom and labs for career and technical education classes, improve school safety by modernizing security systems, retrofitting buildings to be earthquake proof, and upgrading emergency communications.

### Measure O Total Revenue = \$276,614,202



# **Measure O Project Status Updates**



# Jackson Elementary School

## Measure O Campus Improvements

### Project Description

Jackson Elementary School was built in 1959. Under Measure O, the school will receive construction of a new 2-story classroom building with 8 standard classrooms, staff and student restrooms, and custodial areas, removal of 8 existing portables, new fencing, new parking lot and drop off areas, 35 standard stalls and 2 HC stalls, renovation of 6 existing kindergarten classrooms, new kindergarten play area that includes new landscaping, shade trees, and new playground equipment, renovation of existing classroom buildings and library, and site work including the removal and replacement of existing damaged sewer lines, new underground infrastructure for the new building, ADA upgrades, and relocation of Head Start portable classroom, new interior restroom and finishes, new play equipment, landscaping & hard-scape.

<b>Project Group:</b>	Group B
<b>Architect:</b>	WLC Architects
<b>DSA Status:</b>	<b>Approved</b> on August 28, 2019
<b>Bidding &amp; Award:</b>	Spring 2020
<b>Construction:</b>	April 2020 to February 2022
<b>Project Budget:</b>	\$22,105,461

### Project Status

- ✓ Buildings F, G, M, N, D, E, C & H - 98% Complete and turned over to the site - Pending punch list items
- ✓ New staff parking - 98% Complete - Pending punch list items
- ✓ Building B (classrooms 4, 5 & 6) - 85% Complete - Scheduled to complete in July, 2021 - Final punch list job walk TBD - Scheduled move-in on 7-30-21
- ✓ Building A (classrooms K1, K2 & K3) - Approximately 40% complete - Scheduled to complete July, 2021 - Final punch list job walk TBD - Scheduled move-in on 7-30-21
- ✓ Head Start Portable Classroom - 75% complete - Scheduled to complete in July, 2021 - Final punch list job walk TBD - Scheduled move-in on 7-30-21
- ✓ Kinder & Head Start play area site work - Ongoing demo and grading work - Ongoing play structure concrete curve
- ✓ New 2-Story Building J - Ongoing metal stud framing and HVAC work - Elevator placement was done on 4-13-21 - Approximately 45% complete - Scheduled to complete December 2021



# Jackson Elementary School

## Construction Progress Pictures



New Staff Parking



Building J Steel Framing



Building J Sud Framing

# Jackson Elementary School

## Construction Progress Pictures



Building H



Building H Staff Workroom





# Jackson Elementary School

## Construction Progress Pictures



Building C Boys Restroom



Building C Classroom





# Jackson Elementary School

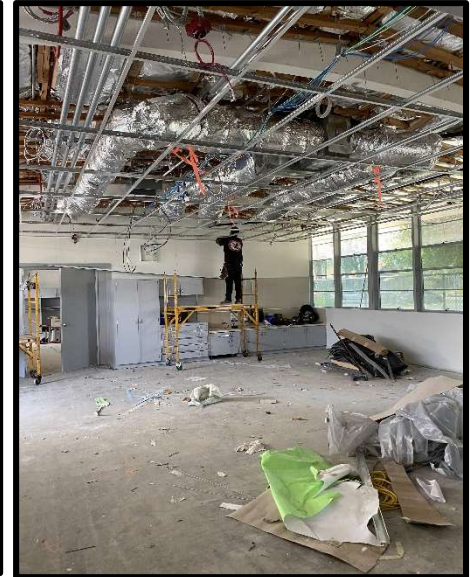
## Construction Progress Pictures



Building A



Building B



Head Start Portable



Head Start Classroom Northside



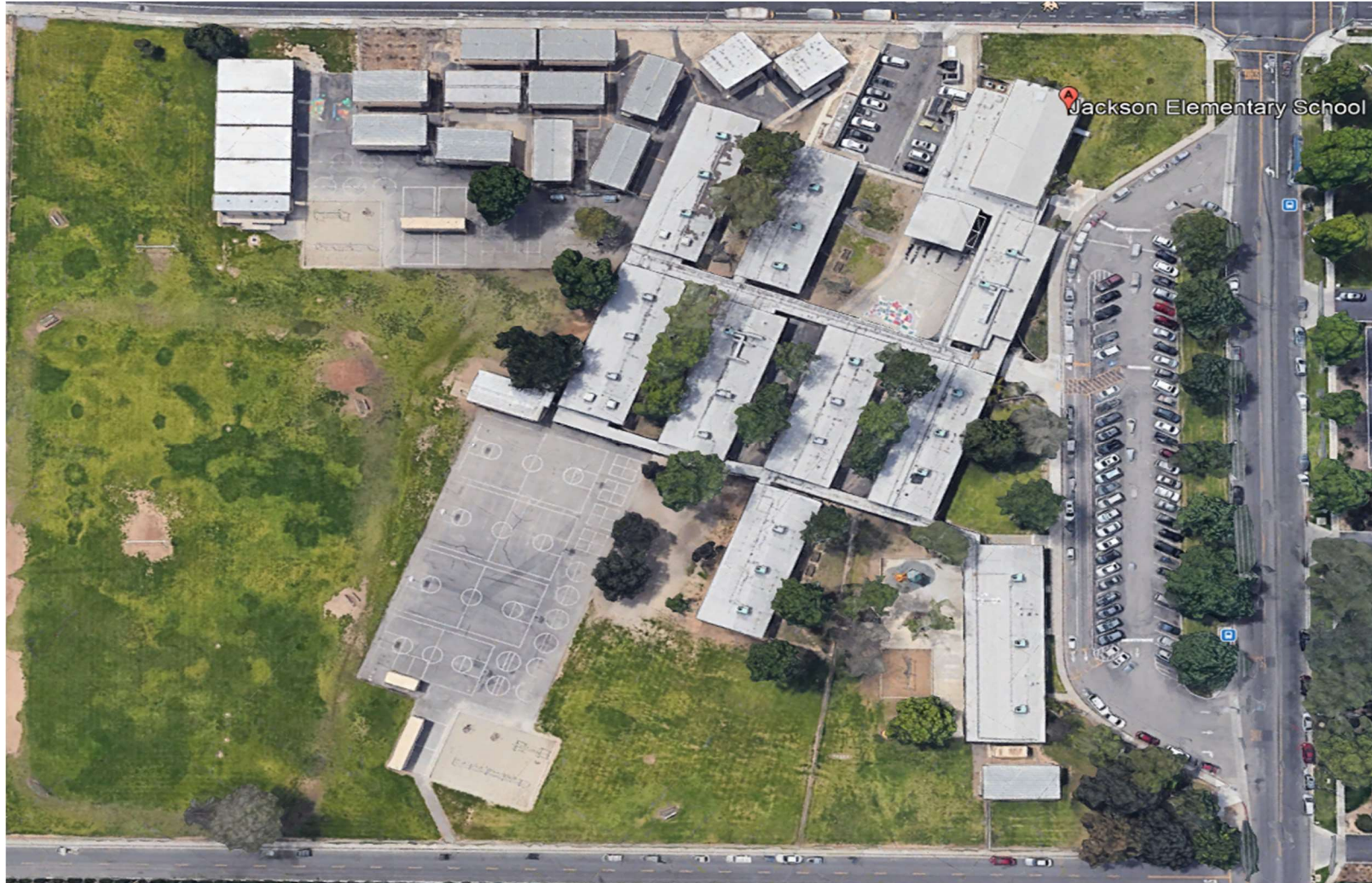
# Jackson Elementary School

## Project Rendering



# Jackson Elementary School

## Existing Site Plan





# Jackson Elementary School

## New Site Plan



### APPROVED ACTIONS OF PRIORITIES

- **Construction of New 2-Story Classroom Building**
  - 8 Classrooms, restroom facilities, and support spaces
- **Construction of New Shade Structure**
- **Construction of New Staff Parking Lot and Bus Drop-off Area**
- **Reconfiguration of Existing Bldg H to Kindergarten Classroom Bldg**
- **Minor Campus-Wide Modernization at All Existing Permanent Buildings**
  - Replace PA system
  - Replace low voltage conduit and cable
  - Replace fire alarm system
  - Replace roofing
  - Replace HVAC rooftop units, ductwork, and controls
  - Replace exterior light fixtures
  - Upgrade restroom facilities
- **Minor Campus-Wide Modernization at All Existing Permanent Portable Classrooms**
  - Replace PA system
  - Replace low voltage conduit and cable
  - Replace fire alarm system
  - Replace exterior lighting fixtures
  - Replace handrails/ ramp slopes
- **Head Start Portable Classroom**
- **DP** **Campus-Wide Drinking Fountain Replacement**
- **Site Improvements**
  - Improve hard and soft landscape at kindergarten and upper grade playground areas
  - Provide new playground equipment/apparatus at kindergarten and upper grade playground areas
  - Provide new fencing at school front of kinder classroom buildings
  - Replace portions of campus fencing
  - Replace concrete walkway along POT

# Magnolia Elementary School

## Measure O Campus Improvements

### Project Description

Magnolia Elementary School is one of the oldest schools in the District, built in 1898. Under Measure O, the school will receive construction of 2 new single-story classroom buildings with 10 standard classrooms, student restrooms, and a staff restroom, removal of 10 existing portable classrooms from the site at the end of the project, new kindergarten play area, new drop-off area off of Maplewood Place, new flooring in cafeteria, and related site work.

<b>Project Group:</b>	Group C
<b>Architect:</b>	ATI Architects
<b>DSA Status:</b>	<b>Approved</b> on April 11, 2019
<b>Bidding &amp; Award:</b>	February to May 2020
<b>Construction:</b>	May 2020 to September 2021
<b>Project Budget:</b>	\$12,616,082

### Project Status

#### New buildings E & F

- ✓ Complete and occupied
- ✓ Interim housing demolition to begin on June 24<sup>th</sup>

#### New Kinder Play Area

- ✓ Demolition of existing portables is complete
- ✓ Site grading completed
- ✓ New concrete surfaced are being placed

#### New Drop Off Loop

- ✓ Demolition completed
- ✓ Site underground utilities in progress



# Magnolia Elementary School

## Construction Progress Pictures



# Magnolia Elementary School

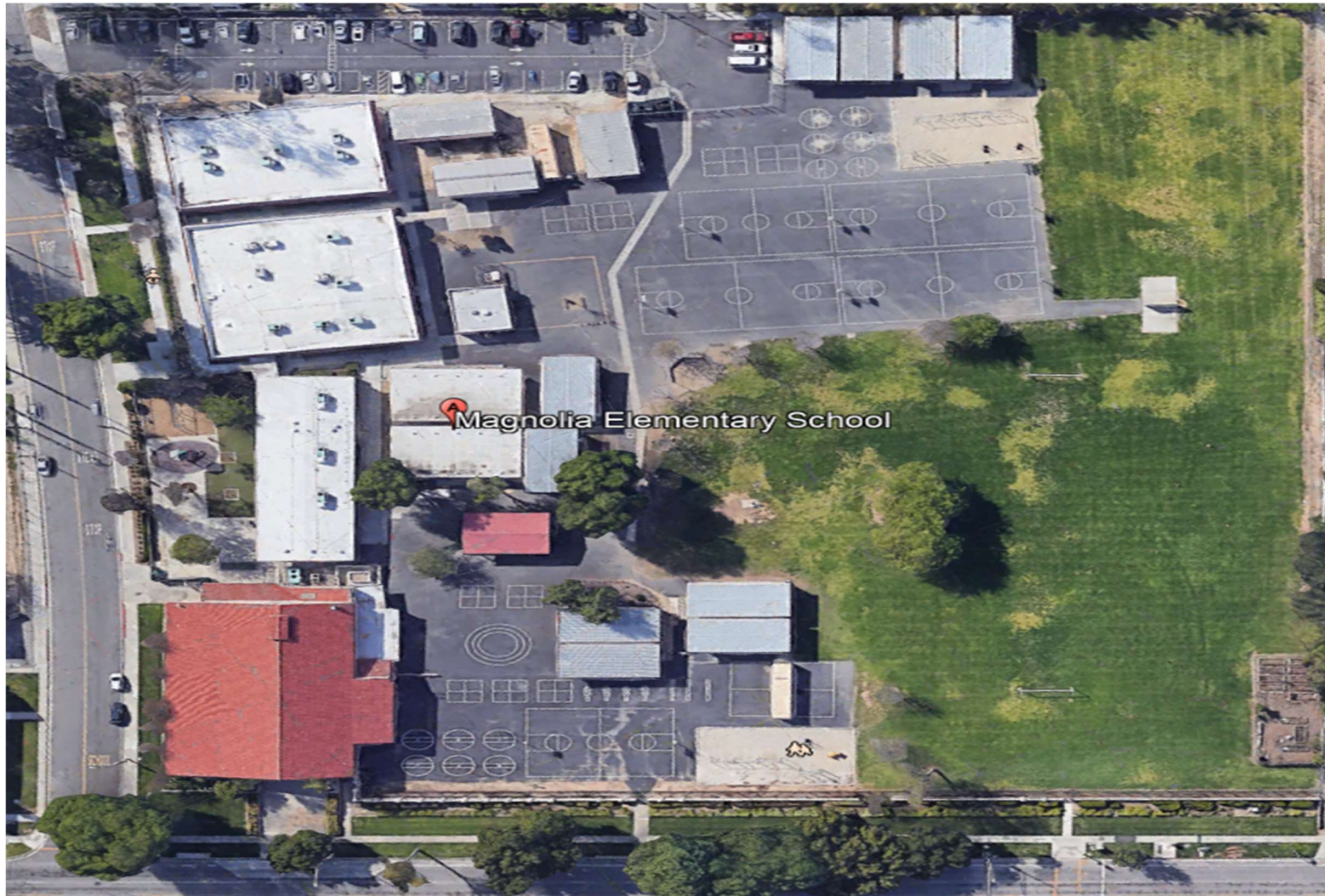
## Project Rendering





# Magnolia Elementary School

## Existing Site Plan



# Magnolia Elementary School

## New Site Plan



### NEW AND MODERNIZATION

- |   |                              |
|---|------------------------------|
| 1 | ADMINISTRATION               |
| 2 | CLASSROOMS                   |
| 3 | LIBRARY / MEDIA CENTER       |
| 4 | AUDITORIUM / MPR / CAFETERIA |
| 5 | AUDITORIUM KITCHEN           |

### PRIORITY # DESCRIPTION

- |   |  |
|---|--|
| 1 | REPLACE 10 PORTABLES WITH NEW SINGLE STORY BUILDINGS   |
| 2 | DROP OFF/PICK UP AREA                                  |
| 3 | NEW KINDER PLAY AREA                                   |
| 4 | HARDSCAPE / FLOOR DRAINAGE CONDITIONS                  |
| 5 | INTERIM HOUSING (PORTABLE CLASSROOMS AND PARKING AREA) |

### ADD ALTERNATE

- |   |  |
|---|--|
| 6 | AUDITORIUM / MULTI-PURPOSE MINOR REMODEL |
| 7 | HVAC REPLACEMENT FOR BLDG'S A, K, & M    |



# Adams Elementary School

## Measure O Campus Improvements

### Project Description

Adams Elementary School was built in 1962 on a 7.6 acre site. Under Measure O, the school will receive construction of a new single-story 5 Kindergarten classroom building, removal of 5 existing portable classrooms from the site at the end of the project, new kindergarten play area that includes new landscaping, shades trees, and playground equipment, new decomposed granite walking path area with new landscape and irrigation, new drop-off area and parking lot off of Adams Street that includes 22 standard parking spaces and 2 ADA parking spaces, and related site work.

<b>Project Group:</b>	Group C
<b>Architect:</b>	LPA Architects
<b>DSA Status:</b>	<b>Approved</b> on July 9, 2019
<b>Bidding &amp; Award:</b>	January 2020 to March 2020
<b>Construction:</b>	May 2020 to July 2021
<b>Project Budget:</b>	\$13,995,922

### Project Status

#### New Kinder Building

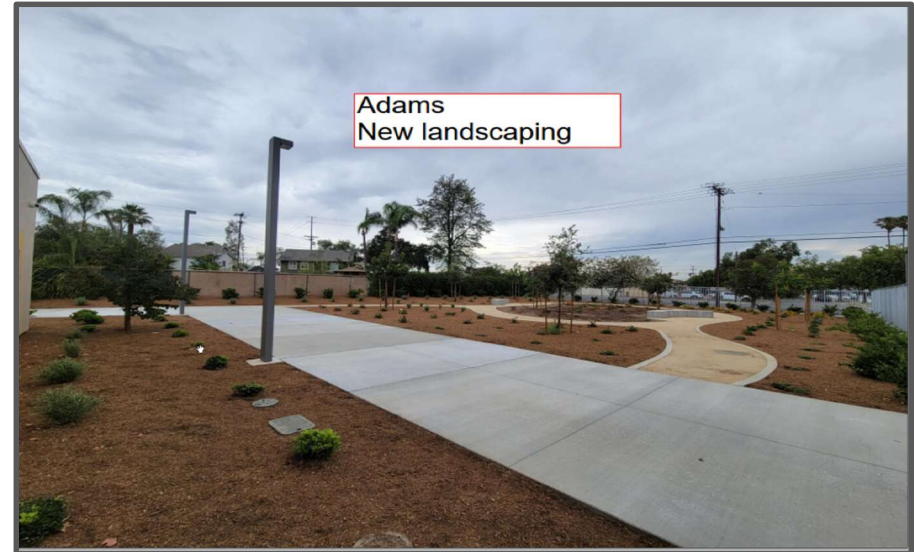
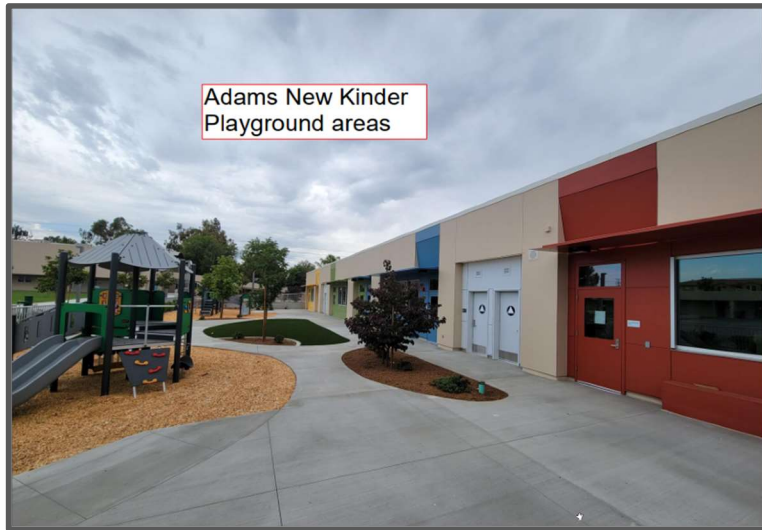
- ✓ Exterior painting complete
- ✓ Exterior signage complete
- ✓ Playground areas completed
- ✓ Site concrete complete
- ✓ 212/239 Punch list items completed

#### Interim Housing

- ✓ Demolition completed

# Adams Elementary School

## Construction Progress Pictures



# Adams Elementary School

## Project Rendering





# Adams Elementary School

## Existing Site Plan





# Adams Elementary School

## New Site Plan



### **BUILDINGS**

- NEW KINDER BUILDING
- LOW-LEVEL RENO. (3) PORTABLES
- (5) REMOVE EXISTING PORTABLES
- (3) RELOCATE EXISTING PORTABLES

- (1) DEMOLISH STORAGE UNIT
- TOTAL BUILDING RENOVATION**

### **SITE**

- NEW DROP OFF
- NEW PARKING
- HARDSCAPE IMPROVEMENTS
- EXTERIOR FENCE IMPROVEMENTS
- NEW FENCE
- NEW KINDER PLAY GROUND
- NEW STORM WATER TREATMENT
- SAND PIT PLAY AREA IMPROVEMENTS
- SITE UTILITIES IMPROVEMENTS
- TOTAL SITE IMPROVEMENTS**

# Sunshine Early Childhood Center

## Measure O Campus Improvements

### Project Description

Sunshine Early Childhood Center was built in 1947. The site currently has 3 portable classroom buildings. The site also houses the California Children Services (CCS), a county program that services students with special needs. Under Measure O, the site will receive a new portable building to relocate the CCS which will relieve 3,000+ square feet for students of Sunshine. The site will also receive a new play structure, a light modernization, and a front campus facelift.

<b>Project Group:</b>	Group B
<b>Architect:</b>	GO Architects
<b>DSA Status:</b>	<b>Approved</b> on February 19, 2019
<b>Bidding &amp; Award:</b>	February to May 2020
<b>Construction:</b>	May 2020 to December 13, 2021
<b>Project Budget:</b>	\$10,800,000

### Project Status

Building C is Completed

#### Building A

- ✓ Rough MEP completed
- ✓ New ceiling installations in progress
- ✓ Drywall installation in progress
- ✓ Exterior painting in progress

#### Building B (Administration)

- ✓ MEP rough in in progress
- ✓ Drywall installations beginning

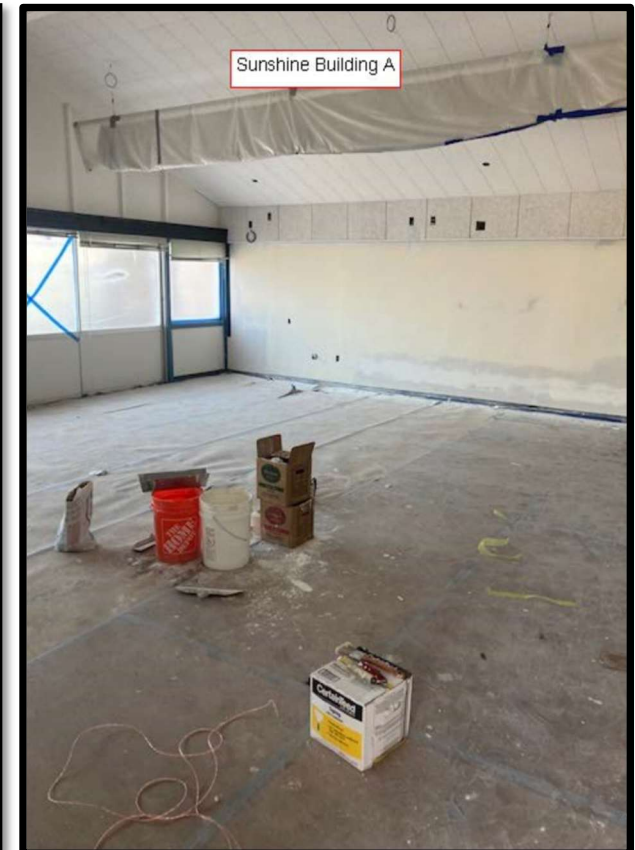
#### Electrical upgrade

- ✓ Site demolition completed
- ✓ Utility trenching completed
- ✓ Conduit installations in progress
- ✓ Concrete utility vaults installed



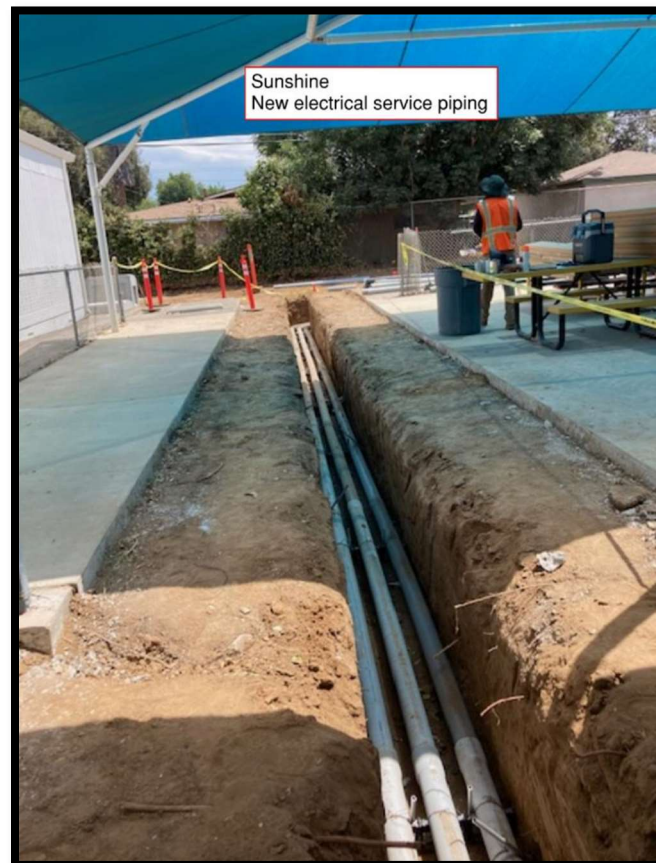
# Sunshine Early Childhood Center

## Construction Progress Pictures



# Sunshine Early Childhood Center

## Construction Progress Pictures





# Sunshine Early Childhood Center

## Project Renderings



# Sunshine Early Childhood Center

## Project Rendering





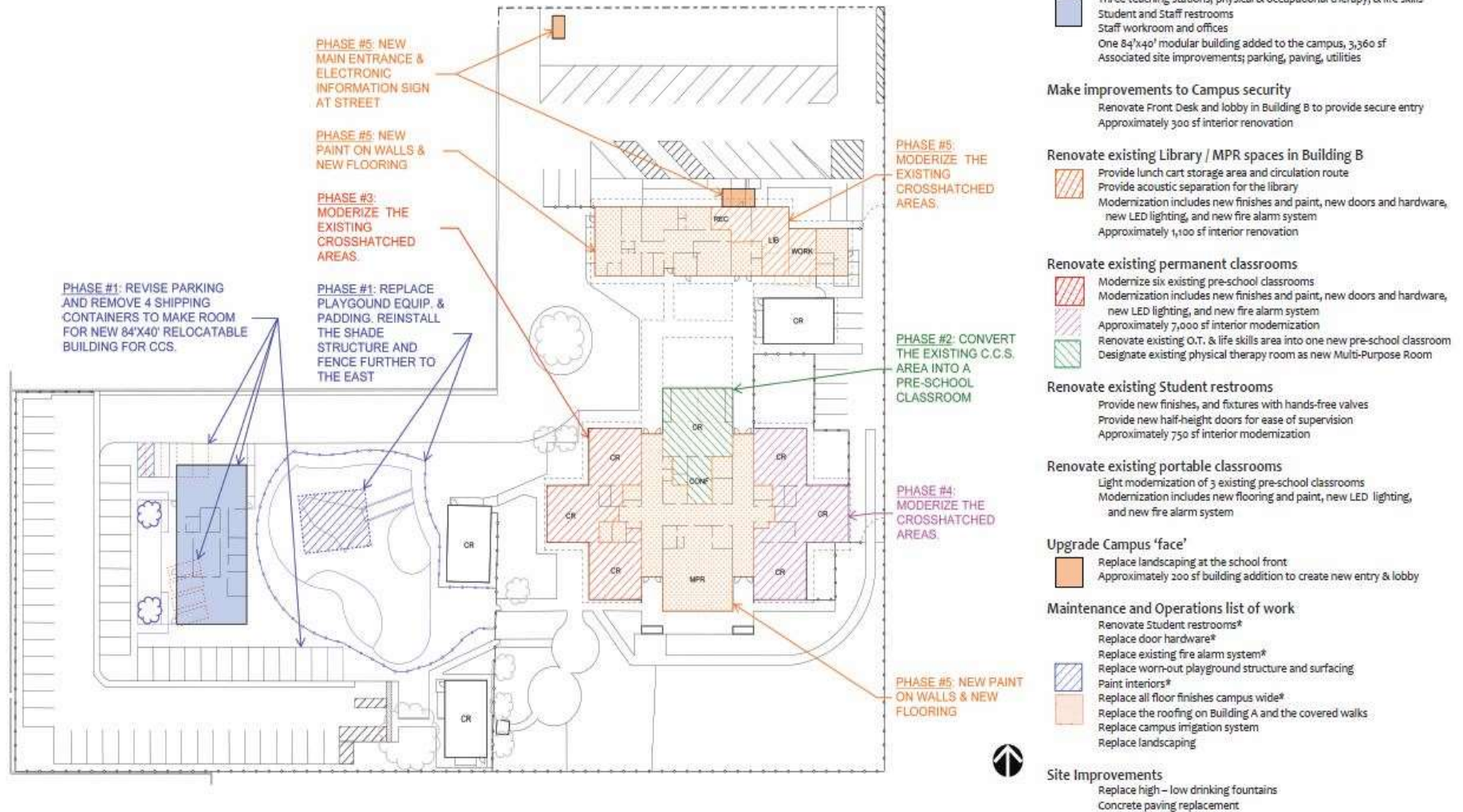
# Sunshine Early Childhood Center

Existing Site plan



# Sunshine Early Childhood Center

## New Site Plan





# Poly High School

## Measure O Campus Improvements

### Project Description

Poly High School was built in 1965. The school is on 40 acres of land. Under Measure O, the scope being proposed are ADA upgrades to the main campus and a new gymnasium. The ADA upgrades to the campus began in May of 2020 and the auxiliary gym will follow, going into construction in 2021.

<b>Project Group:</b>	Group B
<b>Architect:</b>	WLC Architects
<b>DSA Submittal:</b>	March 30, 2019
<b>Phase I Construction:</b>	May 2020 to September 2021
<b>Poly Gym Bid/Award:</b>	January 1, 2021
<b>Gym Construction:</b>	March 2021
<b>Project Budget:</b>	\$24,039,894

### Project Status

#### The Quad

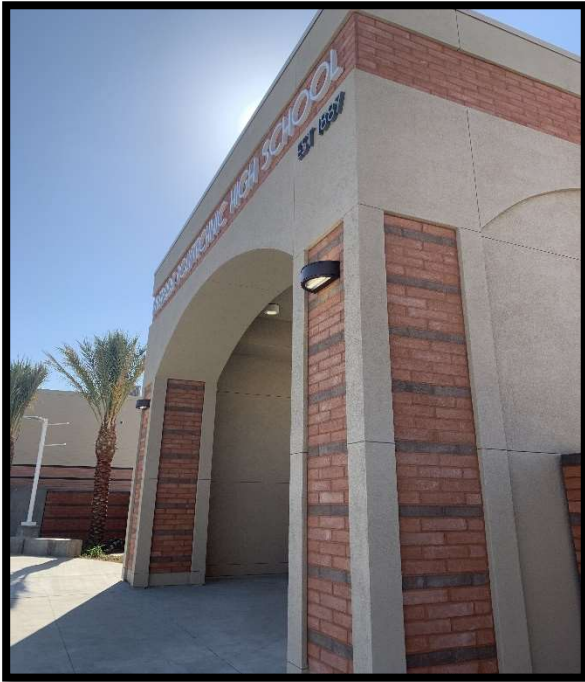
- ✓ All concrete has been completed
- ✓ Landscape has been completed
- ✓ Minor punch list items are ongoing
- ✓ Final cleaning and removal of temporary fencing is ongoing

#### Poly New Auxiliary Gym

- ✓ Gym slab and underground utilities have been completed
- ✓ Block work has begun on the building
- ✓ Site grading for basketball courts and ADA upgrades is ongoing
- ✓ Building interior rough for electrical and plumbing is ongoing

## Poly High School

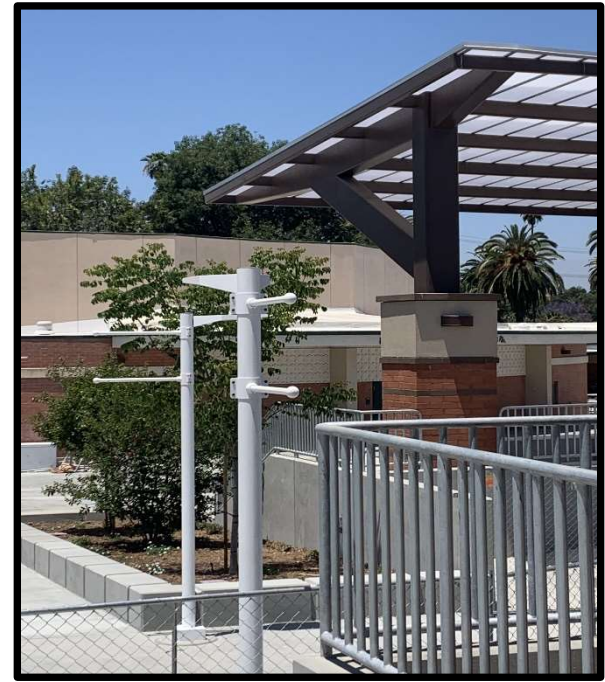
### Quad Construction Progress Pictures



Completed Entry Portal



Completed Shade Structure



Landscape & Shade Structure



## Poly High School

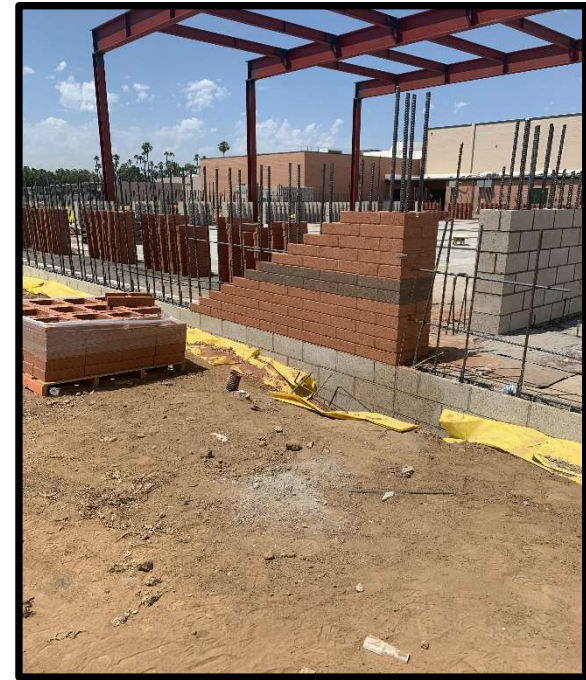
### Gym Construction Progress Pictures



ADA Upgrades



Grading at Baseball Fields



Starter Course

## Poly High School

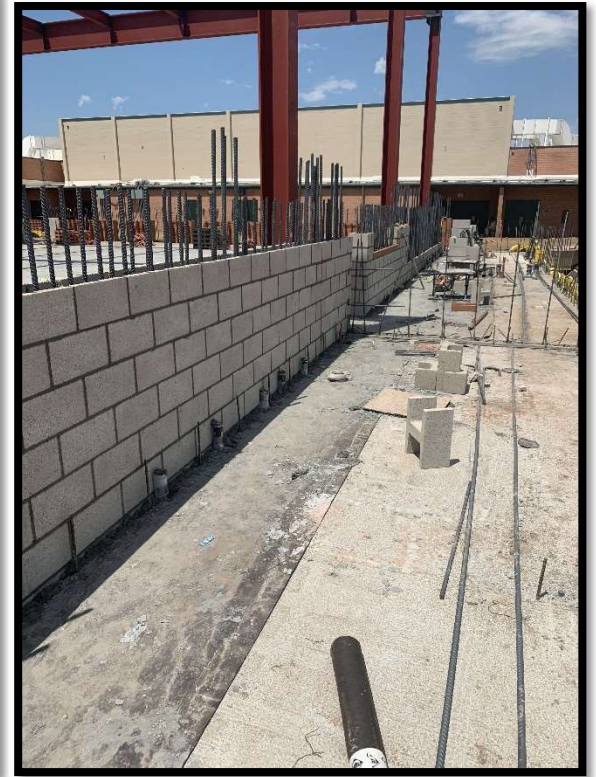
### Gym Construction Progress Pictures



Slab & Steel Structure



Color Block



Block Starter



## Poly High School

New Entry Project Rendering



# Poly High School

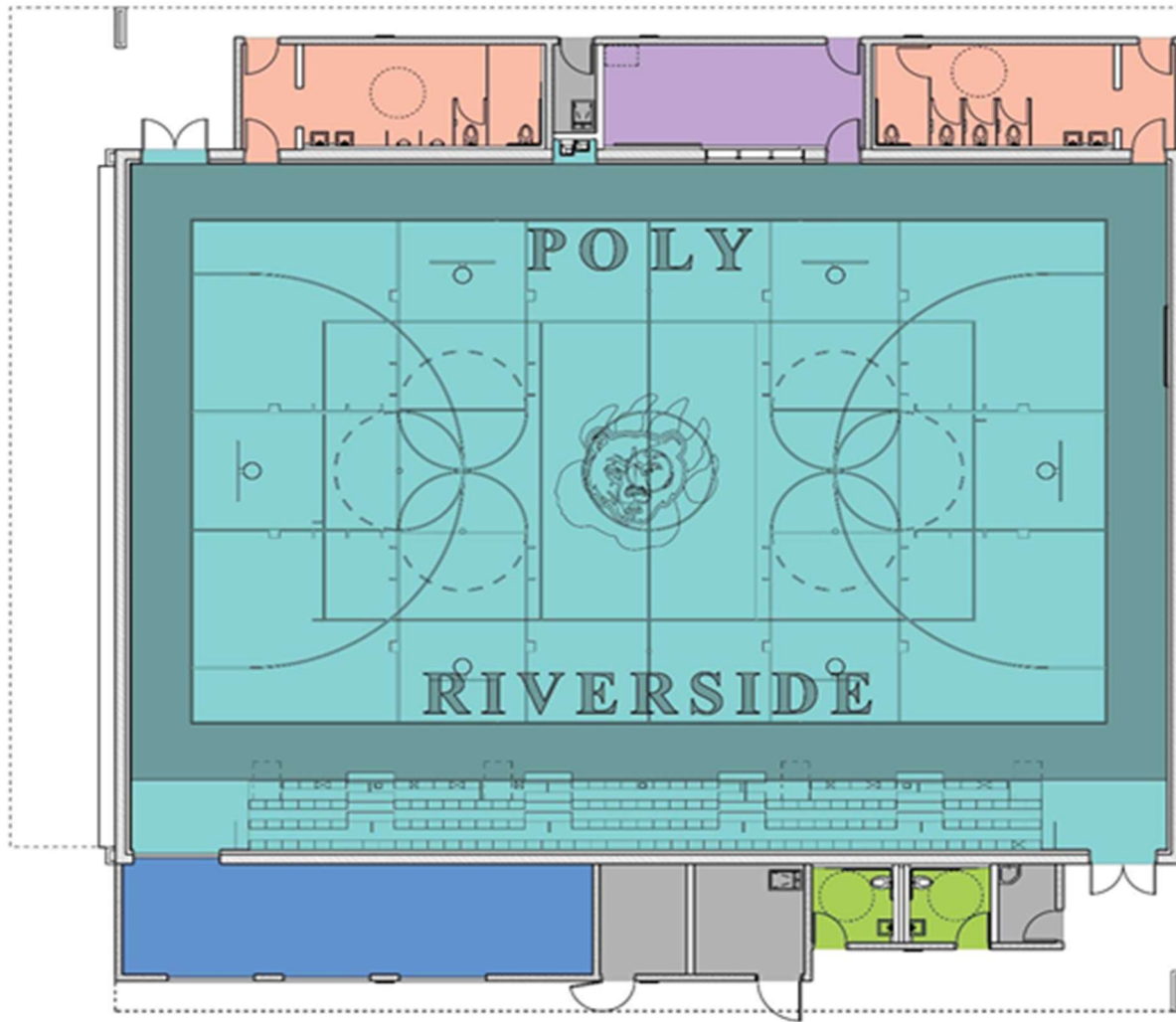
## Quad Project Rendering





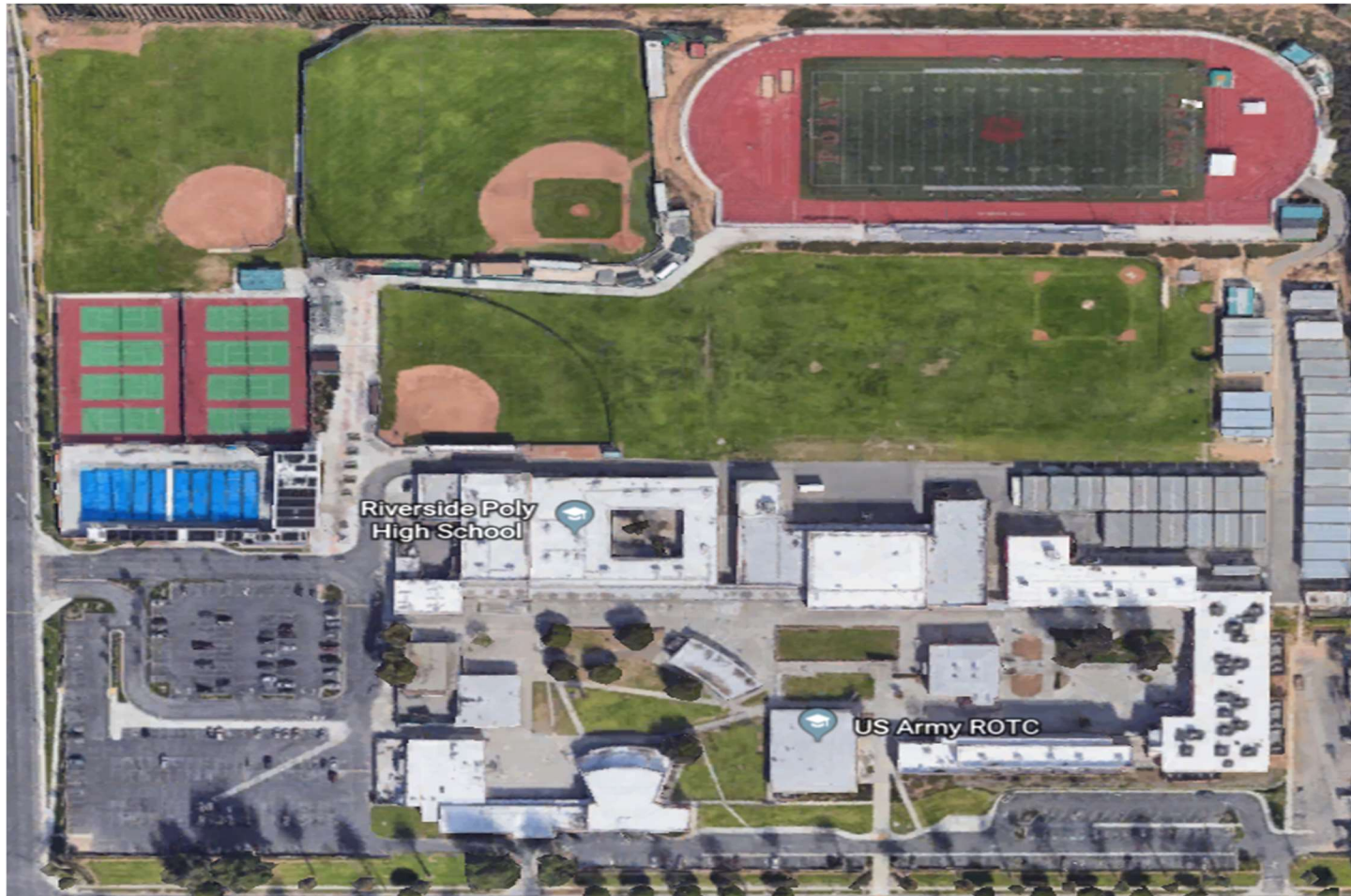
# Poly High School

## Poly Gym Rendering



# Poly High School

## Existing Site Plan





# Arlington High School

## Measure O Campus Improvements

### Project Description

Arlington High School was built in 1973 on a 47 acres site. The site currently has 21 portable classroom buildings. Under Measure O, the project will receive a new eight science classroom building, upgrades to media arts, courtyard & site enhancements, curb appeal, moderate modernization, renovation of existing pool, new auxiliary gym, and stadium expansion.

<b>Project Group:</b>	Group C
<b>Architect:</b>	Ruhnau Clarke Architects
<b>DSA Status:</b>	<b>Approved</b>
<b>Bidding &amp; Award:</b>	Fall 2020
<b>Construction:</b>	December 2020 – June 2022
<b>Project Budget:</b>	\$26,302,640

### Project Status

- ✓ Building R Auxiliary Gym has been roofed and rough framing is complete. Lath and Plaster on exterior has begun
- ✓ Building J has been roughed out, interior finishes are ongoing. Exterior lath and plaster in process
- ✓ Building Q Has been roofed and dried in. Interior insulation and drywall is ongoing
- ✓ The Stadium footings have been completed and bleachers are slated for mid-July
- ✓ Pool renovation has begun slab and pool demolition is in progress

# Arlington High School

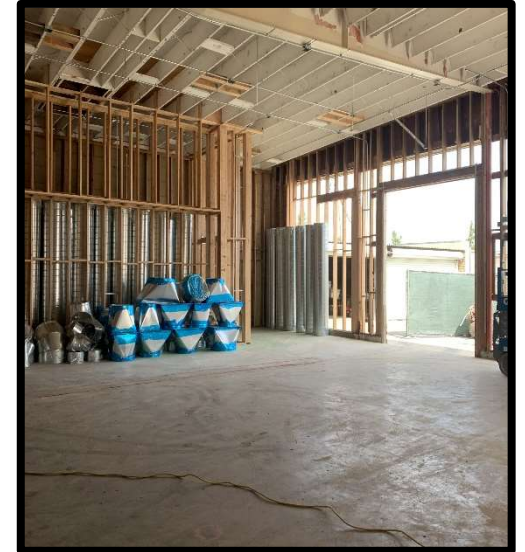
## Construction Progress Pictures



Biomed Framing



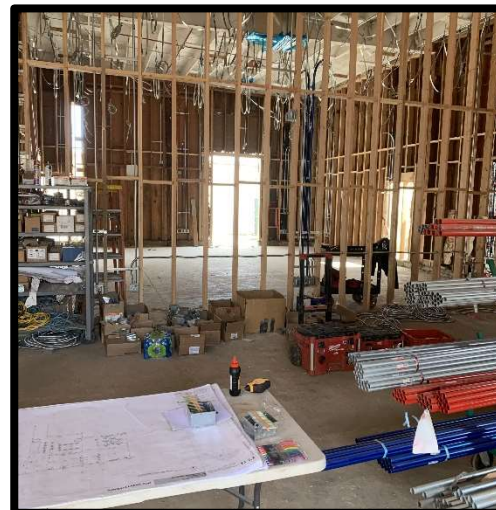
Gym Roof Structure



Media Rough



Gym Preparing for Stucco





# Arlington High School

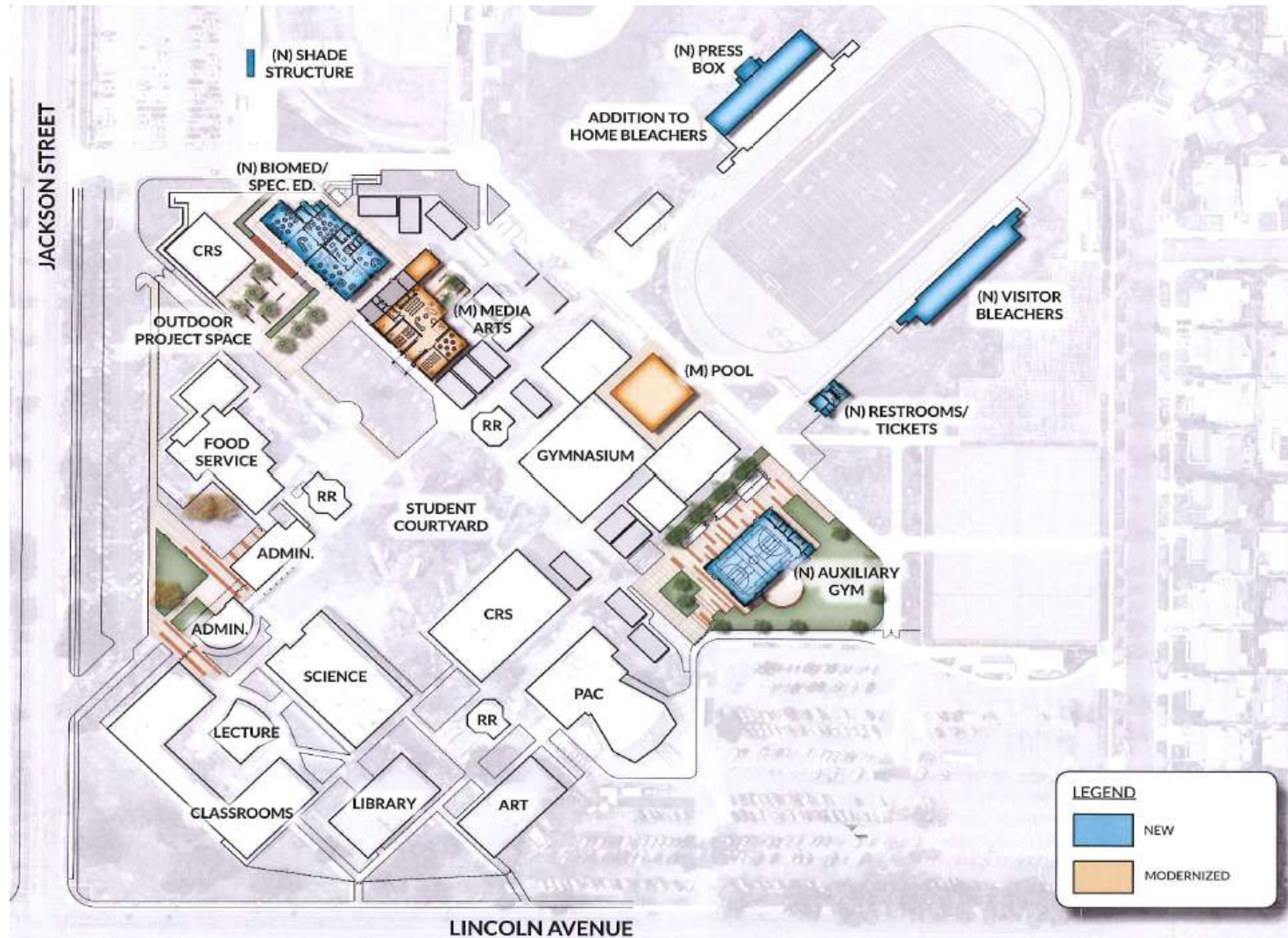
## Existing Site Plan





# Arlington High School

## New Site Plan





# Alcott Elementary School

## Measure O Campus Improvements

### Project Description

Alcott Elementary School was built in 1961. Under Measure O, the school Alcott Elementary School will receive improvements:

**Existing Buildings:** new interior and exterior painting, new ceiling tile and t-bar, new lighting, new HVAC, casework, and carpet, and restroom ADA upgrades.

**Site Work:** Removal of eleven (11) classroom portables, grading, new hard court play yard area, turf, ADA Upgrades, new landscape and irrigation throughout the campus, new gate, new fencing, and new domestic water, sewer, storm drain, and gas line for new building.

**New Classroom Building:** Six (6) general education classrooms and four (4) kindergarten classrooms with restrooms and new Kinder playground, play equipment and fencing.

<b>Project Group:</b>	Group B
<b>Architect:</b>	DLR Architects
<b>DSA Submittal:</b>	April 2, 2019
<b>Construction:</b>	May 2021 to September 2022
<b>Project Budget:</b>	\$23,073,713

### Project Status

- ✓ Construction started on 5-3-21
- ✓ Site & parking lot demolition work - 80% complete - Ongoing concrete/asphalt grading for new hardscape & irrigation prep-work
- ✓ Interim housing - Portable classrooms were relocated - Ongoing area cleanup and infrastructure work is 30% complete
- ✓ Modernization Buildings A, B, C, I & J - Demolition work is 70% complete - Ongoing HVAC and ADA work is 30% complete
- ✓ Modernization building D - Scheduled to start in October 2021
- ✓ Modernization buildings E & H - Scheduled to start in Summer 2022
- ✓ New 2-Story classroom building construction - Scheduled to start in July 2021

# Alcott Elementary School

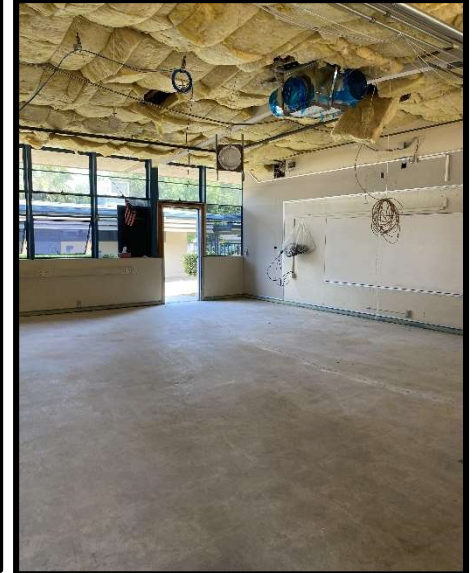
## Construction Progress Pictures



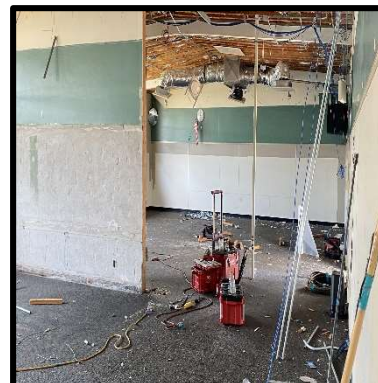
Building A



Building B ADA



Building C



Building I Demo



Building J ADA Hardscape Work



# Alcott Elementary School

## Construction Progress Pictures



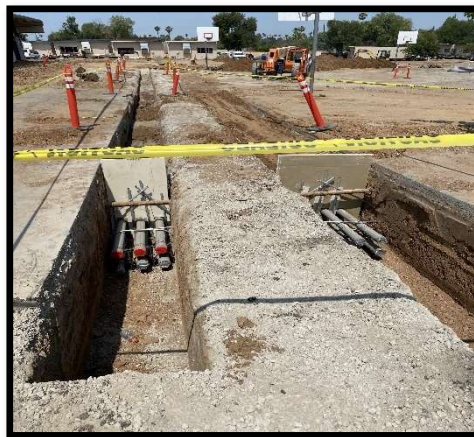
Building J Modernization Demo Work



Interim Housing Portable Relocation



Building C & I ADA



Electrical Site Work



Electrical Infrastructure

# Alcott Elementary School

## Exterior Rendering





# Alcott Elementary School

## Existing Site Plan



# Alcott Elementary School

## New Site Plan





# Monroe Elementary School

## Measure O Campus Improvements

### Project Description

Monroe Elementary School was built in 1955. Under Measure O, Monroe Elementary School will receive a new 1-story classroom building with 5 kinder classrooms, modernization of existing buildings including fire alarm, HVAC, plumbing, roof, door hardware, paint, new carpet, casework, ADA improvements, new school frontage, replacing kinder equipment, updates to irrigation and drainage systems and two new restroom facilities. Site work includes new playground grass, new water, sewer, gas lines, new parking and bus drop-off and lunch shelter.

<b>Project Group:</b>	Group B
<b>Architect:</b>	HMC Architects
<b>DSA Submittal:</b>	September 24, 2019
<b>Bidding &amp; Award:</b>	February to May 2021
<b>Construction:</b>	June 2021 to August 2022
<b>Project Budget:</b>	\$22,559,765

### Project Status

- ✓ Interim portables have been set and utilities are being connected
- ✓ New kinder wing pad is being graded
- ✓ demolition has begun on building A for the remodel
- ✓ New restroom pad has been graded
- ✓ Underground utilities for electrical and plumbing are ongoing

# Monroe Elementary School

## Construction Progress Pictures



Restroom Slab Work



Building A Remodel



Utilities Site Work



Grading for Interim Housing



Courtyard



# Monroe Elementary School

## Project Rendering



# Monroe Elementary School

## Existing Site Plan

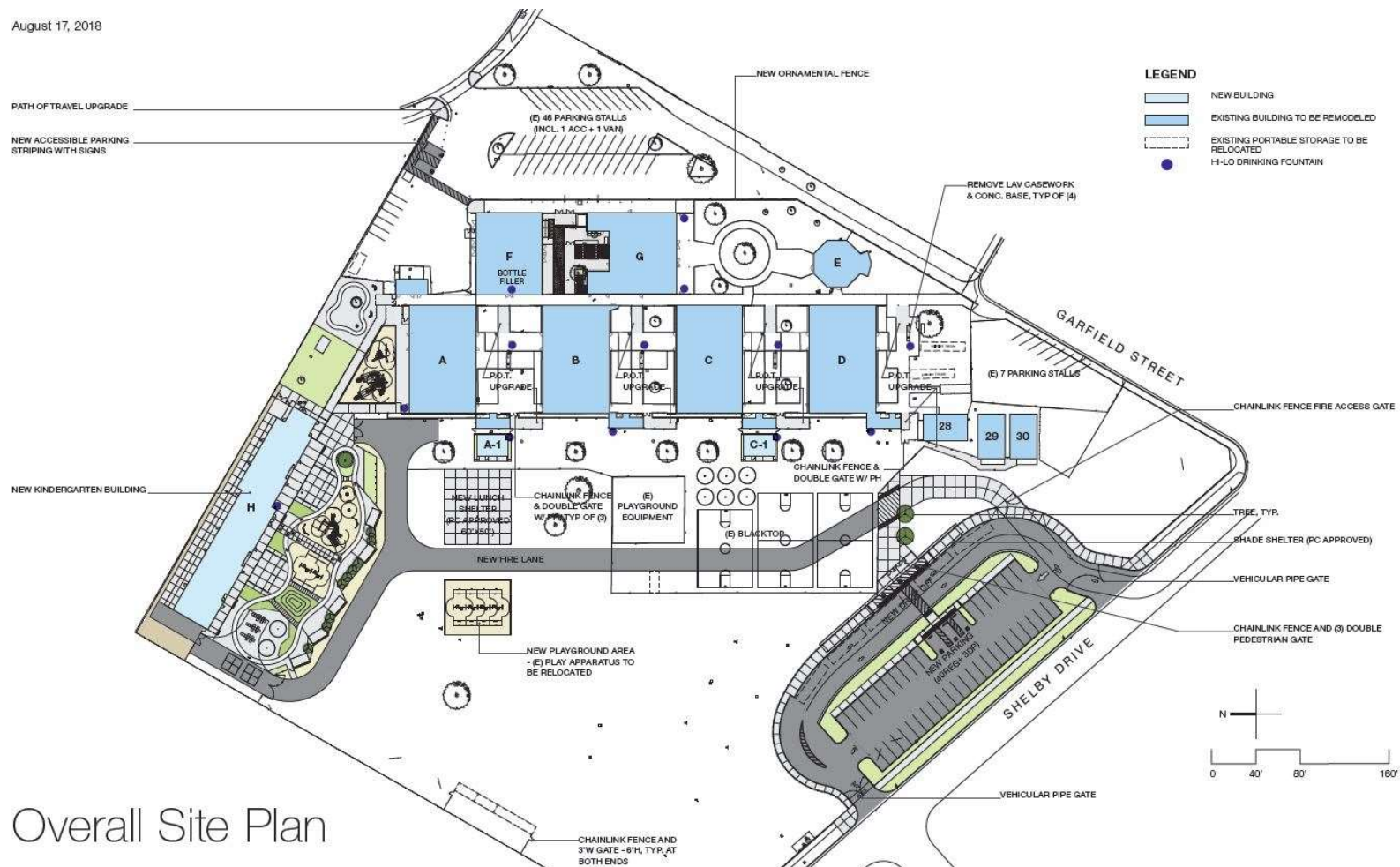




# Monroe Elementary School

## New Site Plan

August 17, 2018



Overall Site Plan

# Fremont Elementary School

## Measure O Campus Improvements

### Project Description

Fremont Elementary School is one of the oldest schools in the District, built in 1917. Under Measure O, Fremont Elementary School will receive:

**New Two-Story Building:** Six general classrooms and six kinder classrooms with interior restrooms, new play equipment and surfacing, landscape, elevator, covered walkway, exterior restrooms and storage.

**Site Work:** Removal of four portables and demo existing building J, new kinder play yard, hard court play yard area, turf, ADA Upgrades, new visitor parking lot with (15) regular and (2) ADA accessible parking stalls, grading, Re-stripe and slurry existing parking lot etc., and domestic water, sewer, storm drain, gas, electrical power upgrades.

**Existing Classroom Buildings and Administration:** Exterior improvements & roofing and reconfigure administration, interior and exterior paint.

<b>Project Group:</b>	Group C
<b>Architect:</b>	Ruhnau Clarke Architects
<b>DSA Status:</b>	<b>Approved</b> on June 28, 2019
<b>Construction:</b>	May 2021 to September 2022
<b>Project Budget:</b>	\$18,672,952

### Project Status

- ✓ Construction started on 5-27-21
- ✓ Playground & landscape - Demolition work is complete
- ✓ Site Work - Hardscape demolition work is 60% complete
- ✓ Sewer and storm drain easements - Sewer line relocation is 70% complete - Storm drain line relocation work is 30% complete
- ✓ Portable classrooms #29 & #30 - Demolition work is complete
- ✓ Building J - Demolition work is 50% complete
- ✓ Relocation of temporary irrigation pump work is 70% complete



# Fremont Elementary School

## Construction Progress Pictures



Asphalt-Hardscape Demo



Building J Demo



Play Equipment & Perimeter Landscaping Demo



Construction Fencing for Roofing Work



Sewer & Storm Drain POC



Storm Drain Easement Trenching



# Fremont Elementary School

## Before Construction Pictures



Location of the New 2-Story & Single-Story Building & New Visitor Parking



Portables #5 and #6 Demolition



Portables 1-4 Relocation Within the Site



# Fremont Elementary School

## Project Renderings



# Fremont Elementary School

## Existing Site Plan





# Fremont Elementary School

## New Site Plan



# Longfellow Elementary School

## Measure O Campus Improvements

### Project Description

Longfellow Elementary School was built in 1947. It faces logistical challenges due to its small foot print and no onsite parking. The site currently has 12 portable classroom buildings. The school is on 6 acres. Under Measure O, it will receive a new 6 kinder and 6 general education classroom building with new play area, new administration building and re-purposing of administration building, new parking lot, and modernization of existing buildings, MPR, and cafeteria.

<b>Project Group:</b>	Group C
<b>Architect:</b>	DLR Architects
<b>DSA Status:</b>	<b>Approved</b>
<b>Bidding &amp; Award:</b>	Spring 2022
<b>Construction:</b>	June 2022 to August 2023
<b>Project Budget:</b>	\$21,273,777

### Project Status

- ✓ The 7th Street cul-de-sac vacation was approved by the City Council on February 2, 2021
- ✓ Project is expected to go out to bid in December 2021
- ✓ Addendum was submitted to DSA for review
- ✓ Residential demolition bid is underway
- ✓ Construction bidding will occur in Spring 2022



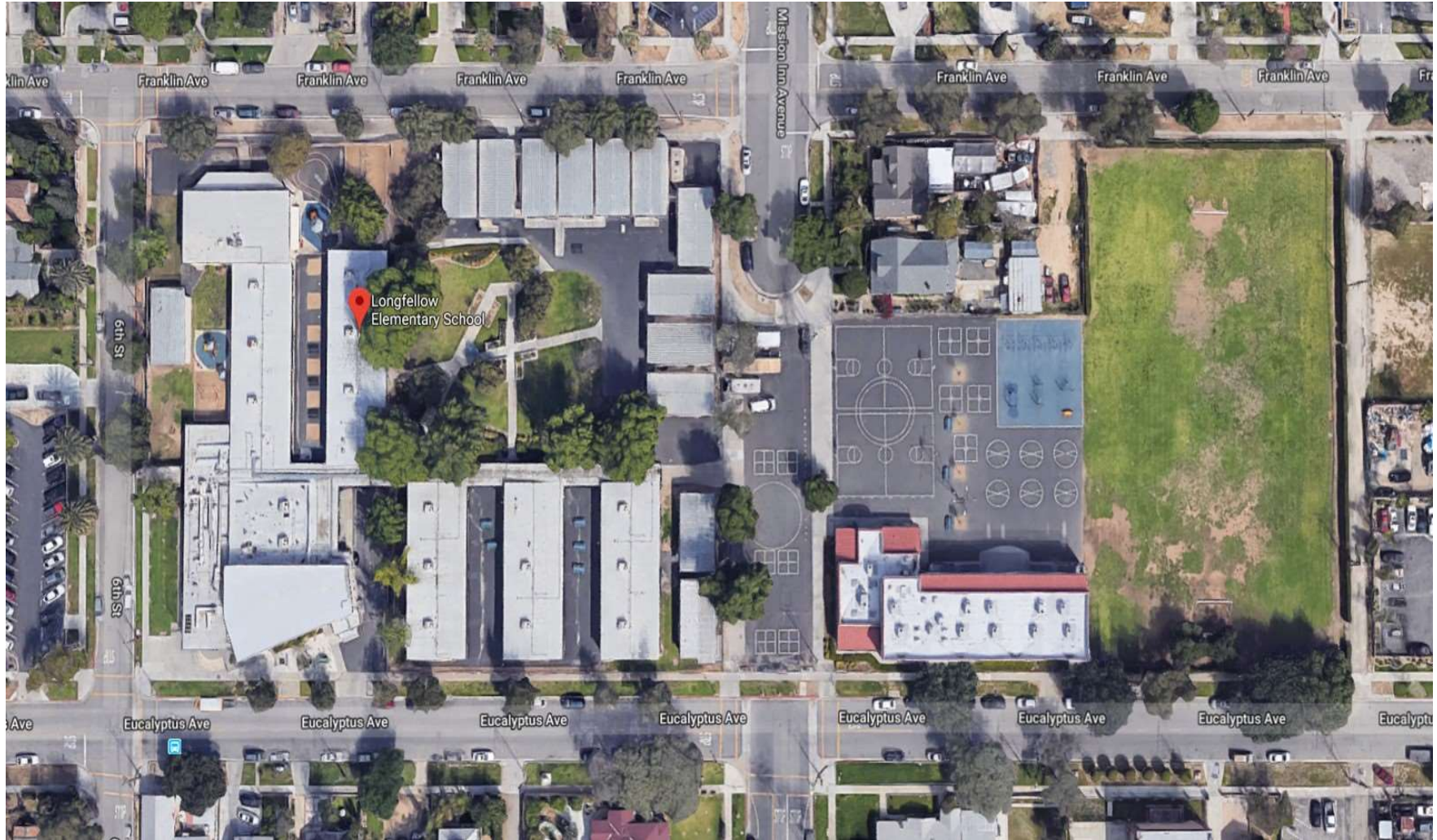
# Longfellow Elementary School

## Building Rendering



# Longfellow Elementary School

## Existing Site Plan





# Longfellow Elementary School

## New Site Plan



# University Heights Middle School

## Measure O Campus Improvements

### Project Description

University Heights Middle School was built in 1979. The site currently has 19 portable classroom buildings. Under Measure O, the site will receive 7 new classrooms within its existing square footage, expansion of the music room, new finishes and relocation of existing library, ADA upgrades, new concrete running track, and fire lane extension, upgrade/repair kitchen utilities, landscaping and security fencing.

<b>Project Group:</b>	Group C
<b>Architect:</b>	GO Architects
<b>DSA Status:</b>	<b>Approved</b> on September 17, 2019
<b>Bidding &amp; Award:</b>	Spring 2022
<b>Construction:</b>	June 2022 to August 2023
<b>Project Budget:</b>	\$6,858,249

### Project Status

- ✓ Plans are DSA approved and shovel ready
- ✓ Facilities is working with our Construction Manager to finalize logistics and phasing plans
- ✓ This project will be bid in Fall of 2021 and begin construction summer of 2022



# University Heights Middle School

## Project Rendering





# University Heights Middle School

## Existing Site Plan





# University Heights Middle School

## New Site Plan



**Paint & Flooring:**  
Exterior & interior paint at Buildings A & B  
New flooring & wall base at Building A Halls  
No work at Gymnasium & Lockers

**Portable Removal:**  
Three portables removed & site restored

**Portable, Light Modernization:**  
Sixteen portable classrooms & one portable restroom building to have exteriors painted

**Light Modernization:**  
Eight Classrooms; new finishes & skylights  
Reconfigure Lobby & Reception at Admin  
MPR; new finishes & skylights, A/V System

**Renovation / Reconfiguration:**  
Convert two Classrooms in B to new Library  
Convert old Library in A to three new Classrooms & Circulation

**Addition / New Classroom Construction:**  
Add four new Infill Classrooms & Circulation  
Expansion of Music Classroom & Support

### Maintenance & Operations:

Fire Alarm System replacement Campus wide  
Replace Landscaping & Irrigation at Campus front  
Replace end-of-life HVAC units, five units total  
Replace MPR Audio / Visual System

### Site Improvements:

Fire Lane restored & widened  
Site Accessibility (ADA), new paving & parking repair  
Treat storm-water runoff  
New Fencing at West property line

# John W. North High School

## Measure O Campus Improvements

### Project Description

John W. North High School was built in 1966 on a 43 acres site. The site currently has 28 portable classroom buildings. This Project is currently in the planning phase. The Design Team will be tasked to develop the scope of work during the 2020/21 school year. The scope of work under Measure O may include: replacement of portable buildings to permanent buildings, site enhancements, infrastructure upgrades, curb appeal, modernization, and site improvements.

<b>Project Group:</b>	Group E
<b>Architect:</b>	GO Architects
<b>DSA Submittal:</b>	To be Determined
<b>Bidding &amp; Award:</b>	To be Determined
<b>Project Budget:</b>	\$26 Million

### Project Status

- ✓ Vision Design Committee (VDC) meeting #03 was held on 5-5-21
- ✓ Homework exercise was assigned to committee members for a proposed scope of work and budget
- ✓ In-person job walks were recommended by some of the committee members
- ✓ In-person job walks were held with VDC members, RISD & AOR on 5-21-21 & 5-24-21
- ✓ The proposed scope of work homework assignments are being reviewed - AOR & CM will acquire cost analysis to present in the next VDC meeting
- ✓ A tentative next VDC meeting is on 7-22-21



# John W. North High School

## Existing Site Plan



# Casa Blanca Neighborhood School

## Measure O Campus Improvements

### Project Description

The proposed site is approximately 9.8 acres located on Lincoln Street. The school will service 750 TK-6 students in the Casa Blanca neighborhood. The new school will include ancillary/support buildings, outdoor learning /shared spaces, TK/K classrooms and play areas, 1-3 classrooms and play areas, Special Education, 4-6 play classrooms and play areas, staff/visitor parking, bus/parent drop off areas.

<b>Group:</b>	<b>Expanded</b>
<b>Architect:</b>	GO Architects
<b>DSA Submittal:</b>	To be Determined
<b>Bidding &amp; Award:</b>	To be Determined
<b>Project Budget:</b>	\$37.5 Million

### Project Status

- ✓ In-person Hybrid Design Committee meeting was held on 6-15-21 - AOR presented two design concept options - Courtyard and Learning Village - Voting forms were submitted - Based on the voting a design concept will be proposed
- ✓ City of Riverside Bunker Street - Meeting was held on 6-14-21 - Bunker Street option 1 & 3 were discussed - City of Riverside recommended a queuing analysis be done by District
- ✓ Educational Specification - Meeting was held with RUSD Education staff members on 6-10-21 -Programming questionnaires were submitted for input requirements - Next meetings will be scheduled with Food Services, Technology & Transportation
- ✓ Next Design Committee meeting will tentatively be scheduled in July 2021



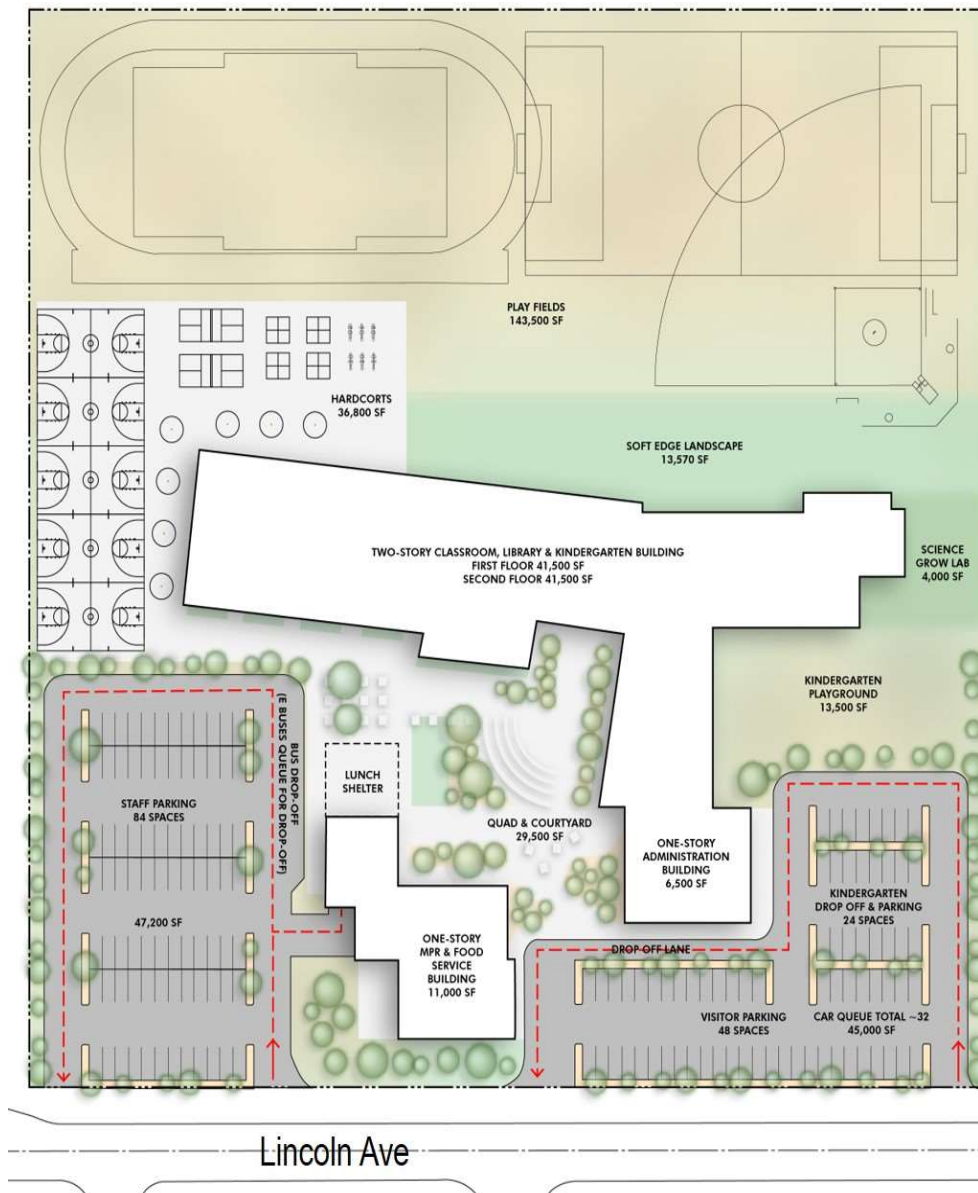
# Casa Blanca Neighborhood School

## Measure O Campus Improvements



# Casa Blanca Neighborhood School

## Conceptual Design Plan



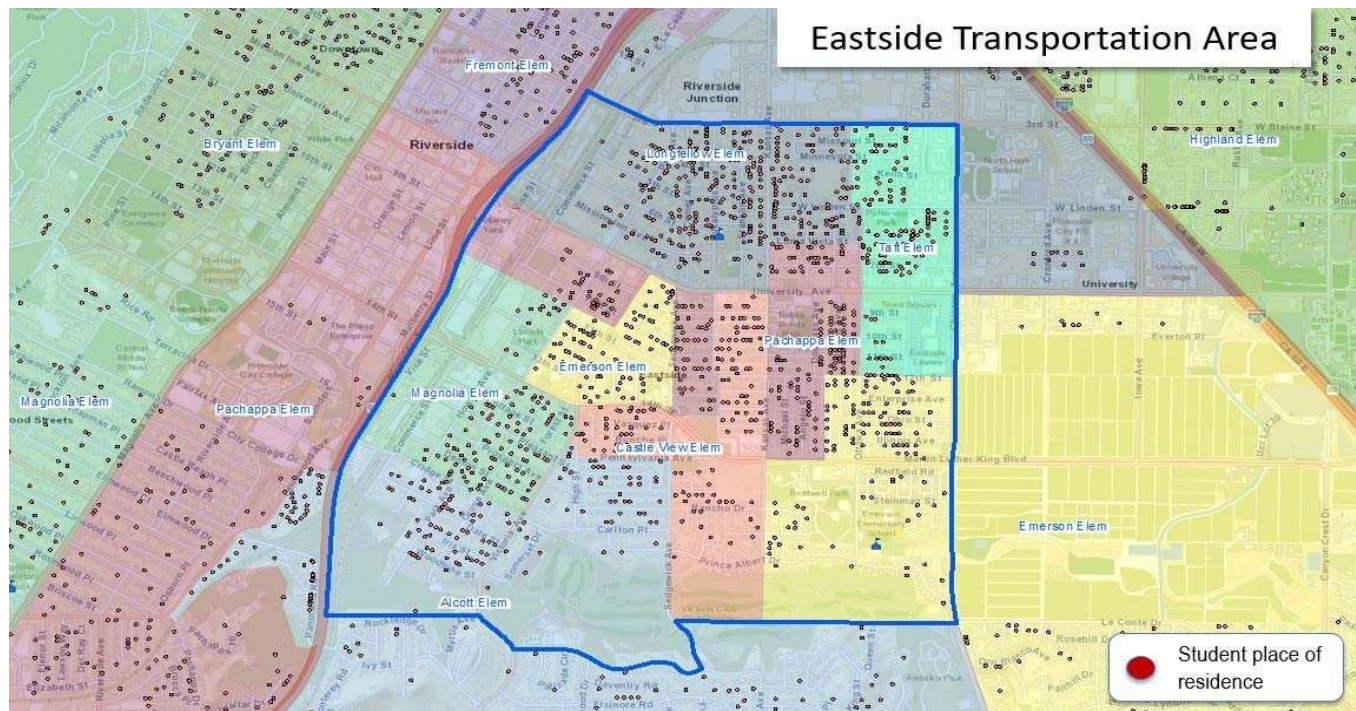
### CONCEPTUAL CASA BLANCA SCHOOL

- 800 TK-6 Student Capacity
- 32 Classrooms
- MPR/Food Service Building
- Administration Building
- 2-Story Classroom Building
- Library and Kindergarten Building
- Hardscapes & Playgrounds
- Play Fields
- Drop-off & Parking Areas



# Eastside Neighborhood School

## Measure O Campus Improvements



## Project Description

The District is exploring various properties within the Eastside neighborhood for a future elementary school. Three options are being considered:

- Option 1: Lincoln school + B Lots, + C Lots, vacate Park Avenue
- Option 2: B Lots, C Lots, Vacation of Park Avenue, Lincoln Park Joint use
- Option 3: B Lots, C Lots, Vacate Park Avenue, Reconfigure Lincoln

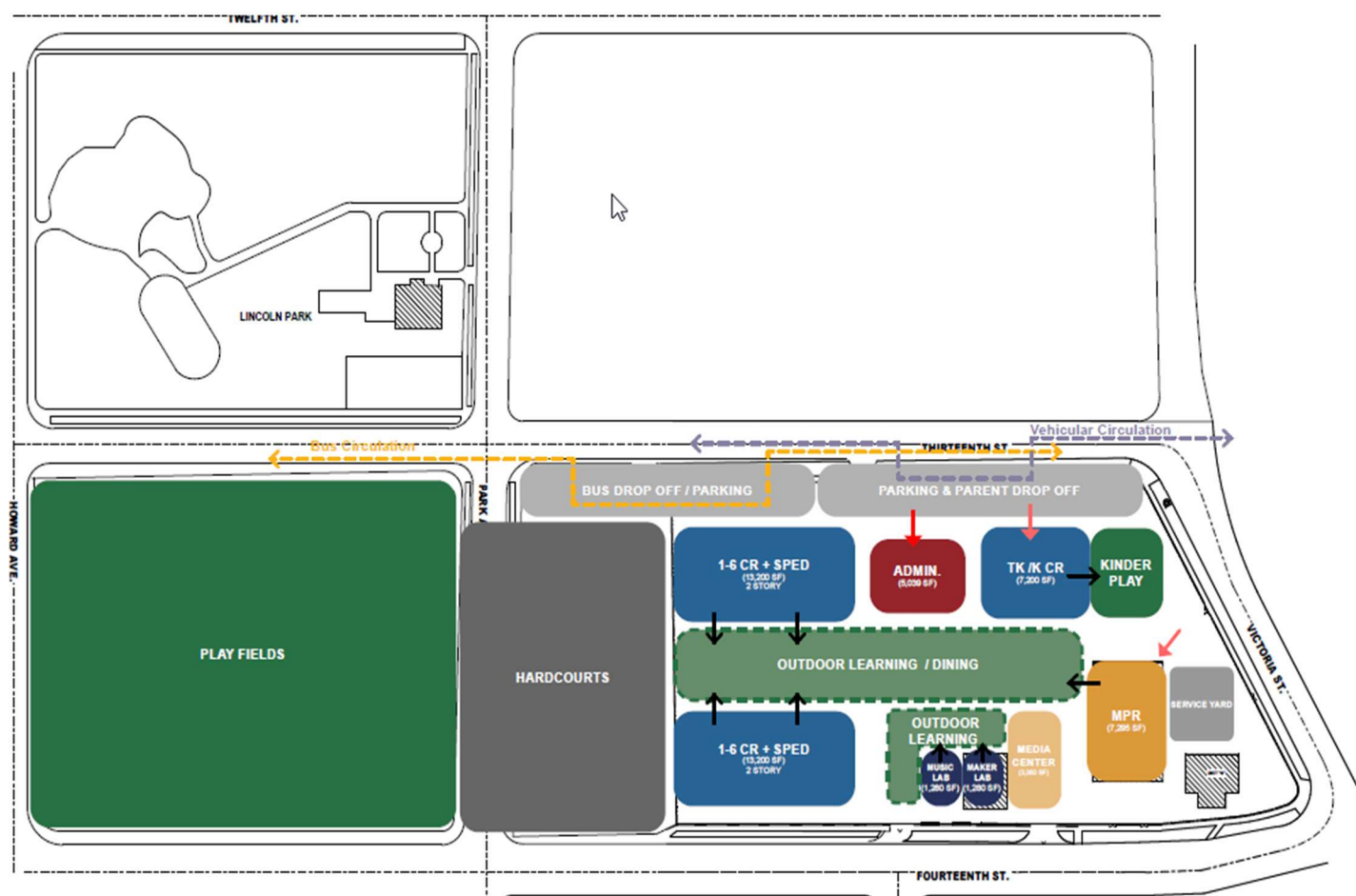
**Group:** Expanded  
**Architect:** PBK Architects  
**DSA Submittal:** To be Determined  
**Bidding & Award:** To be Determined  
**Project Budget:** \$37.5 Million

## Project Status

- ✓ District has purchased 12 properties and is in escrow for 1 more property
- ✓ CEQA Notice of Preparation (NOP) was prepared and mailed out. Scoping meeting was held on May 19, 2021. EIR currently being prepared

# Eastside Neighborhood School

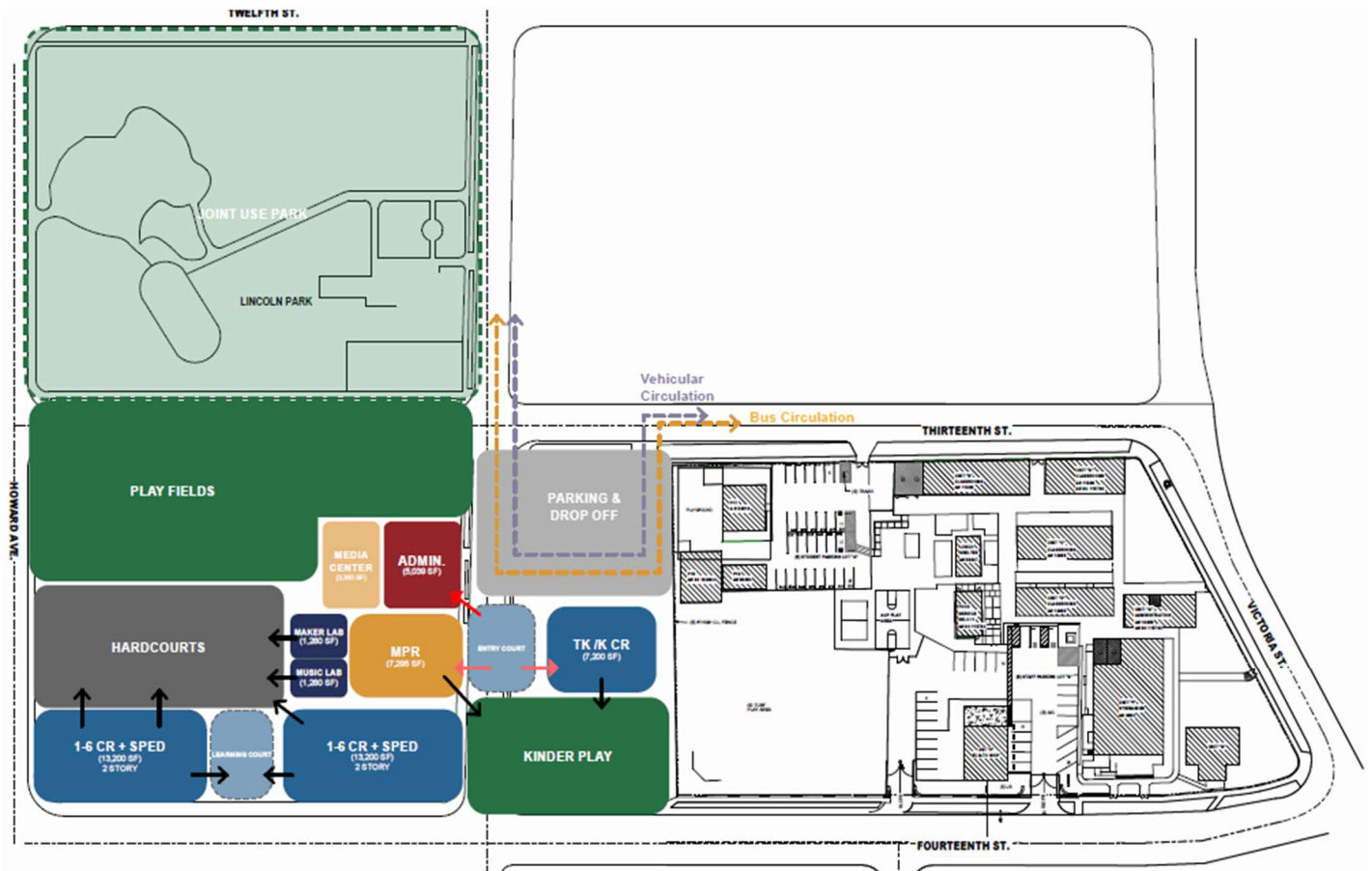
Option 1 – Lincoln School + B Lots, Vacate Park Ave.





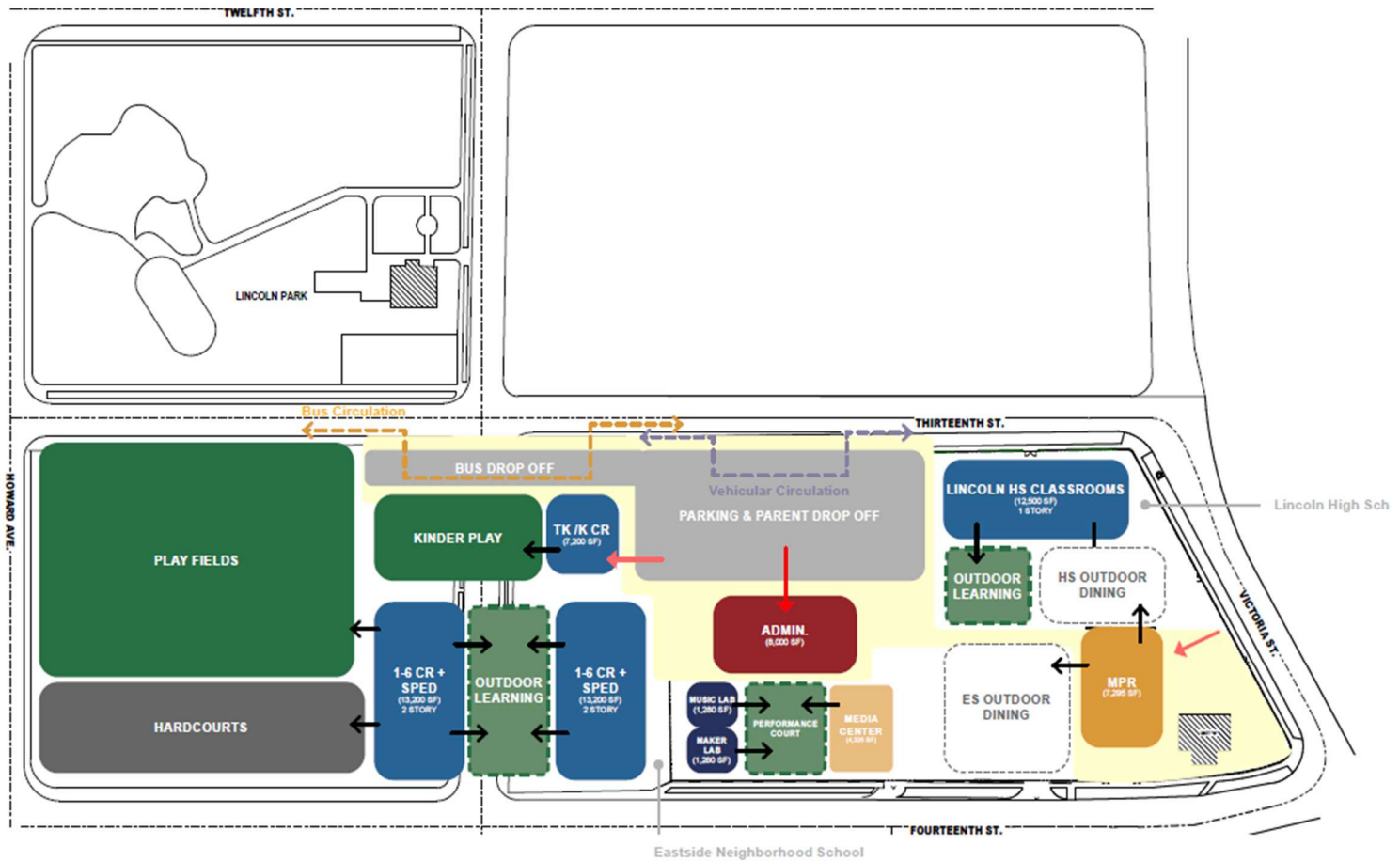
# Eastside Neighborhood School

Option 2 –B Lots, + C Lots, Vacation of Park Ave., Lincoln Park Join Use



# Eastside Neighborhood School

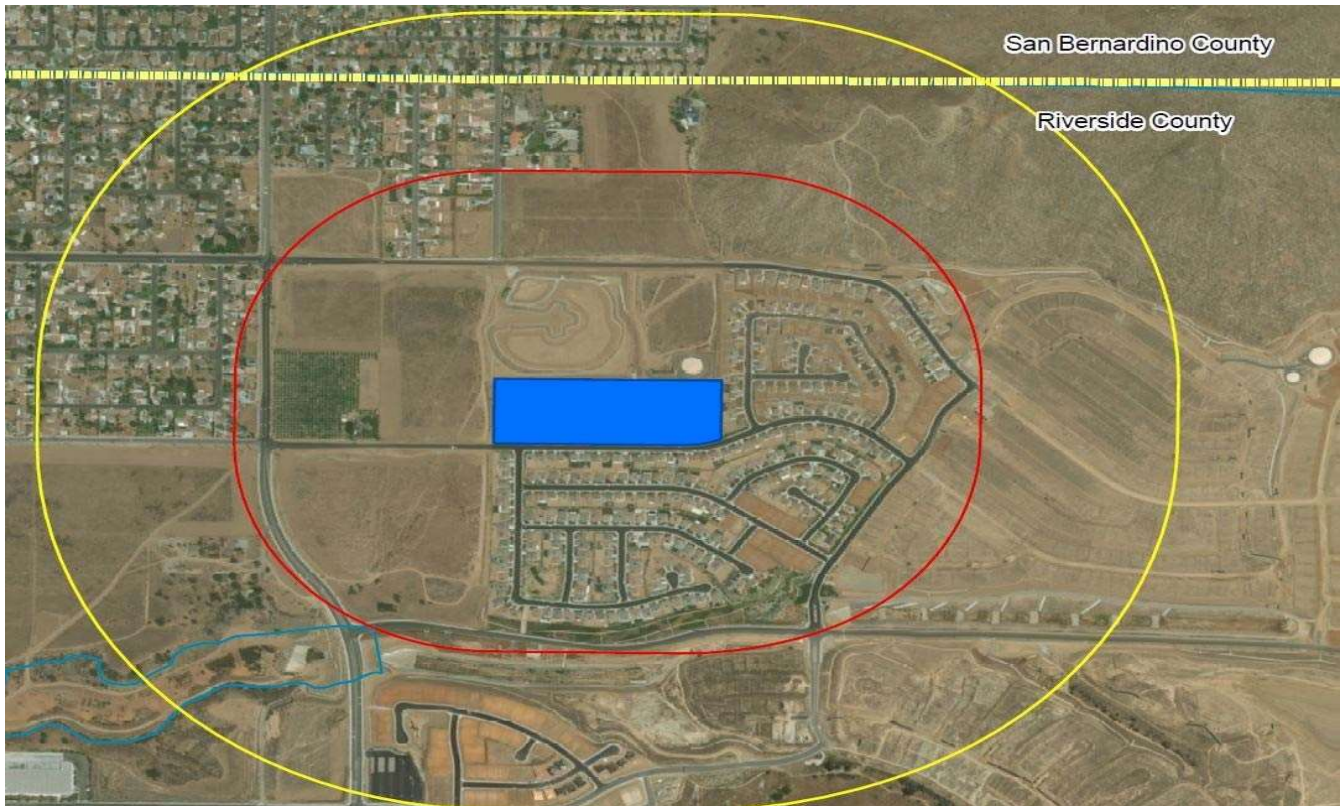
Option 3 – B Lots, + C Lots, Vacate of Park Ave., Reconfigure Lincoln





# Spring Mt. Ranch Neighborhood School

## Measure O Campus Improvements



### Project Description

The site is 13 acres and is located in Spring Mt. Ranch development area. The location of the site is in the Northwestern corner of the Silverspot Road and Spring Street intersection.

<b>Group:</b>	<b>Expanded</b>
<b>Architect:</b>	Ruhnau Clarke Architects
<b>DSA Submittal:</b>	To be Determined
<b>Bidding &amp; Award:</b>	To be Determined
<b>Project Budget:</b>	\$37.5 Millio

### Project Status

- ✓ The District is in the process of forming a Design/ Communications Committee

# STEM Education Center

## Measure O Campus Improvements

### Project Description

A state of the art public STEM high school on the premises of a world class public research university, University of California, Riverside. This project is currently in the early stages of Schematic Design with the CEQA process commencing shortly. The proposed high school will accommodate 1200 students and will focus on Computer Science, Environmental/Agricultural Science, Bio-Medical/Allied Health, and Engineering & Advanced Manufacturing.

<b>Group:</b>	<b>Expanded</b>
<b>Architect:</b>	Ruhnau Clarke Architects
<b>DSA Submittal:</b>	<b>Pending</b>
<b>Project Budget:</b>	\$64,000,000

### Project Status

- ✓ A second community meeting was completed on April 21, 2021  
A purchase order has been requested to hire CEQA consultant
- ✓ A schedule will be developed with the UCR team
- ✓ Due diligence items completed for STEM Education Center include: soils testing, geological and environmental hazards assessment report, pipeline safety hazard assessment, rail safety study, boundary line survey, utility survey, State Allocation Board approval for CTE funding, California Department of Education SFPD form 4.0, UCR CEQA consultant selection, UCR design review board meeting No. 1.
- ✓ Currently in process or under evaluation include: Department of Substance Control submission, City of Riverside Sprint Cell Tower relocation, UCR T-Mobile Cell Tower relocation and City of Riverside Gage Canal and Cell Tower Parcels



# STEM High School @ UCR

## Conceptual Design



## Potential State Grants for Groups A, B & C Projects

The Riverside Unified School District will make every effort to augment its Measure O G.O. Bonds with future State eligible grants. Set forth below are estimated State new construction and modernization grant funding amounts that the District may be eligible for under the State's School Facility Program ("SFP"). The State passed a State School Bond Measure in November of 2016. However, the receipt of potential State grants is predicated on: 1) the Governor agreeing to issue State School Bonds, 2) the District meeting the State's eligibility requirements, and 3) the State funding levels remaining at current levels.

No.	School Project Name	Potential Estimated State Grants *
1	Harrison Elementary School - Modernization & New Construction Grants	\$3,292,748.00
2	Highgrove Elementary School - Modernization Grants	7,338,463.00
3	Jefferson Elementary School - Modernization Grants	2,919,697.00
4	Madison Elementary School - Modernization Grants	2,951,579.00
5	Sierra Middle School - Modernization Grants	140,375.00
6	Alcott Elementary School - Modernization Grants	4,992,754.00
7	Jackson Elementary School - Modernization Grants	4,090,530.00
8	Monroe Elementary School - Modernization Grants	2,417,132.00
9	Sunshine Early Childhood Center - Modernization Grants	1,224,606.00
10	Poly High School - Modernization Grants	4,947,273.00
11	Arlington High School - Modernization Grants	1,102,289.00
12	Adams Elementary School - Modernization Grants	2,880,515.00
13	Fremont Elementary School - Modernization Grants	5,108,915.00
14	Longfellow Elementary School - Modernization Grants	5,319,342.00
15	Magnolia Elementary School - Modernization Grants	3,626,244.00
16	University Middle School - Modernization Grants	2,185,090.00
17	Earhart Middle School - Modernization Grants	5,273,750.00
18	Riverside STEM Academy	497,281.00
19	Poly High School - Chiller Modernization	3,692,426.00
20	Roman High School - Modernization Grants	767,398.00
21	King High School Modernization Grants	6,364,647.00
22	Castle View Elementary School Portables	341,891.00
23	Emerson Elementary School 2 Portable Replacement	279,202.00
24	Jefferson Elementary School Portables	341,891.00
25	Kennedy Elementary School 2 Portable Replacement	167,521.00
<b>COMBINED TOTAL:</b>		<b>\$72,263,559.00</b>

District projects that are on the State's Workload List and may get funding from the current State Bond.  
 These projects have been funded by OPSC and the District has received the funds.



# **Measure O Cumulative Project Expenditures**

From  
**Inception to May 31, 2021**



## School Funding Program Glossary of Acronyms

**General Obligation Bonds (G.O. Bonds) – Fund 21:** Measure 0 is a voter approved bond measure within the boundaries of the District. It represents a maximum tax of \$60 per \$100,000 of assessed property value.

**Community Facilities District Bonds (CFDs):** The Mello-Roos Community Facilities Act provides an alternative method for public agencies to fund facilities. The Community Facilities District ("CFD") is a financing entity through which a local government is authorized to levy special property taxes to pay debt service on bonds or to pay for the direct construction of facilities. CFD revenue is restricted to the funding of additional capacity (e.g. New Construction).

**Developer Fees – Fund 25:** School districts have the ability to impose impact fees from new residential development and commercial/industrial development for the construction or reconstruction of school facilities. Developer fees are collected at the time a building permit is issued and are restricted to the funding of additional capacity (e.g. New Construction).

**Redevelopment Agency Revenue (RDA – Fund 25):** California redevelopment law allows school districts to share property tax increment income via pass-through agreements with local redevelopment agencies. State law eliminated redevelopment agencies as of February 1, 2012; however, local educational agency's pass-through entitlements remain. Redevelopment revenue is received annually and can be used to fund modernization and/or new construction projects.

**State School Facility Program Grants (SFP) - Fund 35:** The SFP provides grants for school districts to acquire school sites, construct new school facilities, or modernize existing school facilities. The two major funding types available are "new construction" and "modernization". The new construction grant provides funding on a 50/50 State and local match basis. The modernization grant provides funding on a 60/40 basis.

**California Clean Energy Jobs Act (Proposition 39):** Prop. 39 is an energy efficiency grant program that provides funding for eligible repairs to heating, ventilation, and air-conditioning (HVAC) systems; new chillers, boilers and furnaces; new lighting and lighting control systems; Installation of energy-efficient windows, programmable thermostats, and thermal window shades; and on-site clean energy generation, such as solar photovoltaic.



## MEASURE O PROJECT COMMITMENTS AND EXPENDITURES

No.	District Project Name	MEASURE O CUMULATIVE COMMITMENTS	Measure O Expenditures Up to 3/31/2021	Expenditures From 4/1/2021 to 5/31/2021	MEASURE O CUMULATIVE EXPENDITURES	REMAINING MEASURE O COMMITMENTS	Current Project Phase
<b>GROUP A PROJECTS</b>							
1	Harrison Elementary School	\$7,877,542.39	(\$7,270,570.72)	(\$294,756.63)	(\$7,565,327.35)	\$312,215.04	Completed/April 2021
2	Highgrove Elementary School	18,715,759.90	(17,809,974.85)	(592,449.00)	(18,402,423.85)	313,336.05	Completed/August 2020
3	Jefferson Elementary School	16,742,754.46	(16,295,991.93)	(274,156.09)	(16,570,148.02)	172,606.44	Completed/April 2021
4	Madison Elementary School	16,705,508.02	(14,685,200.64)	(542,759.16)	(15,227,959.80)	1,477,548.22	Completed/May 2021
5	Sierra Middle School	<u>8,606,498.88</u>	<u>(8,592,024.63)</u>	<u>0.00</u>	<u>(8,592,024.63)</u>	<u>14,474.25</u>	Completed/November 2019
GROUP A PROJECT TOTALS:		\$68,648,063.65	(\$64,653,762.77)	(\$1,704,120.88)	(\$66,357,883.65)	\$2,290,180.00	
<b>GROUP B PROJECTS</b>							
6	Alcott Elementary School	\$10,280,977.01	(\$1,119,686.14)	(\$122,991.09)	(\$1,242,677.23)	\$9,038,299.78	Construction
7	Jackson Elementary School	20,131,497.24	(10,980,736.81)	(1,275,179.31)	(12,255,916.12)	7,875,581.12	Construction
8	Monroe Elementary School	19,415,290.00	(1,185,150.73)	(213,160.36)	(1,398,311.09)	18,016,978.91	Construction
9	Sunshine Early Childhood Center	5,249,396.61	(3,889,770.62)	(377,129.15)	(4,266,899.77)	982,496.84	Construction
10	Poly High School	<u>24,080,969.26</u>	<u>(11,871,715.64)</u>	<u>(1,164,219.84)</u>	<u>(13,035,935.48)</u>	<u>11,045,033.78</u>	Quad/Auxiliary Gym
GROUP B PROJECT TOTALS:		\$79,158,130.12	(\$29,047,059.94)	(\$3,152,679.75)	(\$32,199,739.69)	\$46,958,390.43	
<b>GROUP C PROJECTS</b>							
11	Adams Elementary School	\$10,796,129.91	(\$7,229,937.82)	(\$1,586,267.44)	(\$8,816,205.26)	\$1,979,924.65	Construction
12	Fremont Elementary School	13,411,617.48	(426,990.35)	(1,600.00)	(428,590.35)	12,983,027.13	Construction
13	Longfellow Elementary School	2,594,414.02	(2,160,921.24)	(47,799.41)	(2,208,720.65)	385,693.37	Planning
14	Magnolia Elementary School	11,418,529.45	(7,142,774.50)	(690,978.91)	(7,833,753.41)	3,584,776.04	Construction
15	University Middle School	489,447.70	(413,572.70)	(12,500.00)	(426,072.70)	63,375.00	Planning
16	Arlington High School	<u>22,491,473.72</u>	<u>(4,463,678.87)</u>	<u>(2,151,327.90)</u>	<u>(6,615,006.77)</u>	<u>15,876,466.95</u>	Construction
GROUP C PROJECT TOTALS:		\$61,201,612.28	(\$21,837,875.48)	(\$4,490,473.66)	(\$26,328,349.14)	\$34,873,263.14	

## MEASURE O PROJECT COMMITMENTS AND EXPENDITURES

No.	District Project Name	MEASURE O CUMULATIVE COMMITMENTS	Measure O Expenditures Up to 3/31/2021	Expenditures From 4/1/2021 to 5/31/2021	MEASURE O CUMULATIVE EXPENDITURES	REMAINING MEASURE O COMMITMENTS	Current Project Phase
<b>Groups D, E, F, &amp; H and Expanded Projects</b>							
17	Elem. #35 (Spring Mtn Ranch)	\$4,251,117.89	(\$4,001,599.14)	\$0.00	(\$4,001,599.14)	\$249,518.75	Planning
18	Franklin Elementary School	47,103.04	(47,103.04)	0.00	(47,103.04)	0.00	Planning
19	King High School	1,591,184.85	(891,465.79)	(145.00)	(891,610.79)	699,574.06	Planning
20	Mt. View Elementary School	13,302.50	(13,302.50)	0.00	(13,302.50)	0.00	Planning
21	North High School	415,312.50	(41,625.00)	(51,812.50)	(93,437.50)	321,875.00	Planning
22	Pachappa Elementary School	11,450.00	(11,450.00)	0.00	(11,450.00)	0.00	Planning
23	Taft Elementary School	31,893.06	(31,893.06)	0.00	(31,893.06)	0.00	Planning
24	Washington Elementary School	23,939.85	(23,939.85)	0.00	(23,939.85)	0.00	Planning
25	Woodcrest Elementary School	20,170.63	(20,170.63)	0.00	(20,170.63)	0.00	Planning
26	Earhart Middle School	12,350.00	(12,350.00)	0.00	(12,350.00)	0.00	Planning
27	Ramona High School	21,250.00	(21,250.00)	0.00	(21,250.00)	0.00	Planning
28	New STEM High School @ UCR	1,081,884.78	(819,512.36)	0.00	(819,512.36)	262,372.42	Planning
29	Casa Blanca Neighborhood School	8,615,457.64	(8,172,304.64)	(19,090.00)	(8,191,394.64)	424,063.00	Planning
30	Eastside Neighborhood School	3,216,221.36	(3,524,087.67)	787,156.95	(2,736,930.72)	479,290.64	Planning
31	STEM Academy	9,952.47	(9,952.47)	0.00	(9,952.47)	0.00	Planning
32	Facilities Projects	<u>2,796,552.48</u>	<u>(2,308,027.68)</u>	<u>(56,529.18)</u>	<u>(2,364,556.86)</u>	<u>431,995.62</u>	Planning
GROUPS D, E, F, & H AND EXPANDED PROJECT TOTALS:		\$22,159,143.05	(\$19,950,033.83)	\$659,580.27	(\$19,290,453.56)	\$2,868,689.49	
MEASURE O COMMITMENTS & EXPENDITURES:		<u>\$231,166,949.10</u>	<u>(\$135,488,732.02)</u>	<u>(\$8,687,694.02)</u>	<u>(\$144,176,426.04)</u>	<u>\$86,990,523.06</u>	



## MEASURE O PROJECT EXPENDITURES BY FUND

NO.	DISTRICT PROJECT NAME	MEASURE O PROOJECT EXPENDITURES	DEVELOPER FEE & CFD PROJECT EXPENDITURES	PROP. 39 & SPECIAL RESERVE EXPENDITURES	STATE SCHOOL FACILITY PROGRAM EXPENDITURES	REDEVELPEMNET AGENCY FUND EXPENDIUTRES	COMBINED PROJECT EXPENDITURES TO DATE
<b>GROUP A PROJECTS</b>							
1	Harrison Elementary School	(\$7,565,327.35)	(\$234,625.00)	(\$2,964,817.08)	\$0.00	\$0.00	(\$10,764,769.43)
2	Highgrove Elementary School	(18,402,423.85)	(10,018.83)	(1,226,574.73)	(3,959,120.51)	0.00	(23,598,137.92)
3	Jefferson Elementary School	(16,570,148.02)	(295,545.58)	(928,792.82)	0.00	0.00	(17,794,486.42)
4	Madison Elementary School	(15,227,959.80)	0.00	(361,608.98)	0.00	0.00	(15,589,568.78)
5	Sierra Middle School	(8,592,024.63)	0.00	0.00	0.00	0.00	(8,592,024.63)
	<b>GROUP A PROJECT TOTALS:</b>	<b>(\$66,357,883.65)</b>	<b>(\$540,189.41)</b>	<b>(\$5,481,793.61)</b>	<b>(\$3,959,120.51)</b>	<b>\$0.00</b>	<b>(\$76,338,987.18)</b>
<b>GROUP B PROJECTS</b>							
6	Alcott Elementary School	(\$1,242,677.23)	(\$3,402.17)	\$0.00	\$0.00	\$0.00	(\$1,246,079.40)
7	Jackson Elementary School	(12,255,916.12)	(1,433,425.60)	0.00	0.00	0.00	(13,689,341.72)
8	Monroe Elementary School	(1,398,311.09)	0.00	0.00	0.00	0.00	(1,398,311.09)
9	Sunshine Early Childhood Center	(4,266,899.77)	(918,612.13)	(580,624.49)	0.00	0.00	(5,766,136.39)
10	Poly High School	<u>(13,035,935.48)</u>	(18,502.50)	0.00	0.00	0.00	(13,054,437.98)
	<b>GROUP B PROJECT TOTALS:</b>	<b>(\$32,199,739.69)</b>	<b>(\$2,373,942.40)</b>	<b>(\$580,624.49)</b>	<b>\$0.00</b>	<b>\$0.00</b>	<b>(\$35,154,306.58)</b>
<b>GROUP C PROJECTS</b>							
11	Adams Elementary School	(\$8,816,205.26)	(\$431,823.24)	\$0.00	\$0.00	(\$15,288.52)	(\$9,263,317.02)
12	Fremont Elementary School	(428,590.35)	(790,079.99)	(1,913,951.59)	0.00	0.00	(3,132,621.93)
13	Longfellow Elementary School	(2,208,720.65)	0.00	(690,361.00)	0.00	0.00	(2,899,081.65)
14	Magnolia Elementary School	(7,833,753.41)	(4,806.88)	0.00	0.00	0.00	(7,838,560.29)
15	University Middle School	(426,072.70)	0.00	(116,209.60)	0.00	0.00	(542,282.30)
16	Arlington High School	<u>(6,615,006.77)</u>	0.00	0.00	0.00	0.00	(6,615,006.77)
	<b>GROUP C PROJECT TOTALS:</b>	<b>(\$26,328,349.14)</b>	<b>(\$1,226,710.11)</b>	<b>(\$2,720,522.19)</b>	<b>\$0.00</b>	<b>(\$15,288.52)</b>	<b>(\$30,290,869.96)</b>

## MEASURE O PROJECT EXPENDITURES BY FUND

NO.	DISTRICT PROJECT NAME	MEASURE O PROOJECT EXPENDITURES	DEVELOPER FEE & CFD PROJECT EXPENDITURES	PROP. 39 & SPECIAL RESERVE EXPENDITURES	STATE SCHOOL FACILITY PROGRAM EXPENDITURES	REDEVELPEMNET AGENCY FUND EXPENDIUTRES	COMBINED PROJECT EXPENDITURES TO DATE
<b>Groups D, E, F, &amp; H and Expanded Projects</b>							
17	Elem. #35 (Spring Mtn Ranch)	(\$4,001,599.14)	(\$24,298.43)	\$0.00	\$0.00	\$0.00	(\$4,025,897.57)
18	Franklin Elementary School	(47,103.04)	0.00	0.00	0.00	0.00	(47,103.04)
19	King High School	(891,610.79)	0.00	0.00	0.00	0.00	(891,610.79)
20	Mt. View Elementary School	(13,302.50)	(19,284.34)	(57,839.84)	0.00	0.00	(90,426.68)
21	North High School	(93,437.50)	0.00	0.00	0.00	0.00	(93,437.50)
22	Pachappa Elementary School	(11,450.00)	0.00	0.00	0.00	(87,000.00)	(98,450.00)
23	Taft Elementary School	(31,893.06)	0.00	0.00	0.00	0.00	(31,893.06)
24	Washington Elementary School	(23,939.85)	(64,236.93)	0.00	0.00	0.00	(88,176.78)
25	Woodcrest Elementary School	(20,170.63)	0.00	0.00	0.00	0.00	(20,170.63)
26	Earhart Middle School	(12,350.00)	0.00	0.00	0.00	0.00	(12,350.00)
27	Ramona High School	(21,250.00)	0.00	0.00	0.00	0.00	(21,250.00)
28	New STEM High School @ UCR	(819,512.36)	(169,832.92)	0.00	0.00	0.00	(989,345.28)
29	Casa Blanca Neighborhood School	(8,191,394.64)	0.00	0.00	0.00	0.00	(8,191,394.64)
30	Eastside Neighborhood School	(2,736,930.72)	(1,563,986.65)	0.00	0.00	0.00	(4,300,917.37)
31	STEM Academy	(9,952.47)	0.00	0.00	0.00	0.00	(9,952.47)
32	Facilities Projects	(2,364,556.86)	0.00	0.00	0.00	0.00	(2,364,556.86)
	<b>GROUPS D, E, F, &amp; H AND EXPANDED PROJECT TOTALS:</b>	<b>(\$19,290,453.56)</b>	<b>(\$1,841,639.27)</b>	<b>(\$57,839.84)</b>	<b>\$0.00</b>	<b>(\$87,000.00)</b>	<b>(\$21,276,932.67)</b>
<b>MEASURE O EXPENDITURES BY FUND:</b>		<b>(\$144,176,426.04)</b>	<b>(\$5,982,481.19)</b>	<b>(\$8,840,780.13)</b>	<b>(\$3,959,120.51)</b>	<b>(\$102,288.52)</b>	<b>(\$163,061,096.39)</b>
<b>MEASURE O EXPENDITURES BY PERCENTAGE:</b>		<b>88.42%</b>	<b>3.67%</b>	<b>5.42%</b>	<b>2.43%</b>	<b>0.06%</b>	<b>100.00%</b>



# Measure O Detailed Expenditure Backup

from *Keystone Solutions*  
April 1, 2021 to May 31, 2021



Project: 102-9772 - Adams Elementary School - New Construction				
Vendor	Encumbrance	Expenditure	Balance	Description
Converse Consultants	\$0.00	(\$15,540.00)	(\$15,540.00)	Site Survey
Golden West Moving Systems, Inc.	(\$929.37)	\$0.00	(\$929.37)	Moving Costs
<b>Project Total:</b>	<b>(\$929.37)</b>	<b>(\$15,540.00)</b>	<b>(\$16,469.37)</b>	<b>102-9772 - Adams Elementary School - New Construction</b>
Project: 102-9776 - Adams Elementary School - Modernization				
Vendor	Encumbrance	Expenditure	Balance	Description
Anixter Inc.	\$5,470.13	\$0.00	\$5,470.13	Technology
Arrowhead Mechanical, Inc.	\$0.00	(\$39,450.93)	(\$39,450.93)	Construction Costs
Best Contracting Services	\$0.00	(\$37,252.35)	(\$37,252.35)	Construction Costs
Bithell Inc.	\$0.00	(\$28,975.94)	(\$28,975.94)	Other Construction - Painting
Construction Electric Inc	\$0.00	(\$185,409.63)	(\$185,409.63)	Electrical Costs
Continental Marble and Tile Co.	\$0.00	(\$25,030.03)	(\$25,030.03)	Other Construction
Converse Consultants	\$11,149.94	(\$2,499.00)	\$8,650.94	Site Survey
Crew, Inc.	\$0.00	(\$16,918.00)	(\$16,918.00)	Construction Costs
Cuyamaca Const., Inc.	\$0.00	(\$99,199.95)	(\$99,199.95)	Construction
David M. Bertino Manufacturing, Inc	\$0.00	(\$115,055.45)	(\$115,055.45)	Other Construction
Fischer Inc.	\$0.00	(\$4,750.00)	(\$4,750.00)	Plumbing Costs
Gafcon, Inc.	\$0.00	(\$3,518.50)	(\$3,518.50)	Project Management
JPI Development Group, Inc.	\$0.00	(\$96,757.75)	(\$96,757.75)	Construction Costs
Kar Construction, Inc.	\$0.00	(\$13,747.50)	(\$13,747.50)	Construction Costs
LPA Architects	\$0.00	(\$14,051.44)	(\$14,051.44)	Architect Fees
Lakeshore Learning Materials	(\$2,550.51)	\$0.00	(\$2,550.51)	Materials and Supplies
Nexus IS, Inc.	(\$48,183.13)	\$0.00	(\$48,183.13)	Materials and Supplies
Office & Ergonomic Solutions, Inc	(\$6,805.57)	(\$6,805.58)	(\$13,611.15)	Furniture and Equipment
RVH Constructors, Inc.	\$0.00	(\$667,274.61)	(\$667,274.61)	Construction Costs
Signature Flooring, Inc.	\$0.00	(\$54,131.47)	(\$54,131.47)	Flooring Construction
Southern California Landscaping, Inc.	\$0.00	(\$73,196.35)	(\$73,196.35)	Landscaping Costs
Southland Inspections, Inc.	\$0.00	(\$16,200.00)	(\$16,200.00)	Inspection Costs
Superior Wall Systems, Inc.	\$0.00	(\$35,282.74)	(\$35,282.74)	Construction
Technet Partners Inc.	\$33,758.53	\$0.00	\$33,758.53	Technology/Network
Tilden-Coil Constructors	\$0.00	(\$35,220.22)	(\$35,220.22)	Construction Costs
<b>Project Total:</b>	<b>(\$7,160.61)</b>	<b>(\$1,570,727.44)</b>	<b>(\$1,577,888.05)</b>	<b>102-9776 - Adams Elementary School - Modernization</b>
Project: 104-9772 - Alcott Elementary School - New Construction				
Vendor	Encumbrance	Expenditure	Balance	Description
DLR Group, Inc.	\$258,097.45	(\$2,160.66)	\$255,936.79	Architect Fees
<b>Project Total:</b>	<b>\$258,097.45</b>	<b>(\$2,160.66)</b>	<b>\$255,936.79</b>	<b>104-9772 - Alcott Elementary School - New Construction</b>



Project: 104-9776 - Alcott Elementary School - Modernization				
Vendor	Encumbrance	Expenditure	Balance	Description
Amtek Construction	\$0.00	(\$29,659.95)	(\$29,659.95)	Construction Contractor
DLR Group, Inc.	\$297,378.05	(\$3,250.86)	\$294,127.19	Architect Fees
David M. Bertino Manufacturing, Inc	\$0.00	(\$10,544.05)	(\$10,544.05)	Other Construction
Gafcon, Inc.	\$0.00	(\$117.00)	(\$117.00)	Project Management
Golden West Moving Systems, Inc.	\$32,904.00	\$0.00	\$32,904.00	Moving Costs
Hamel Contracting, Inc.	\$0.00	(\$42,320.08)	(\$42,320.08)	Contractor Fees
Inland Empire Landscape, Inc.	\$0.00	(\$19,817.95)	(\$19,817.95)	Landscaping
Mike's Custom Flooring, Inc	\$0.00	(\$6,221.74)	(\$6,221.74)	Flooring Costs
New Vendor	(\$369,900.00)	\$0.00	(\$369,900.00)	
Placeworks	\$12,967.00	\$0.00	\$12,967.00	Community Planning & Design
Rite-Way Roof Corporation	\$0.00	(\$2,397.80)	(\$2,397.80)	Roofing Costs
Southern California Edison Co	\$0.00	(\$5,728.00)	(\$5,728.00)	Utility - Electric Company
Southland Inspections, Inc.	\$11,400.00	\$0.00	\$11,400.00	Inspection Costs
State Water Resources Control Board	\$773.00	(\$773.00)	\$0.00	Utilities
<b>Project Total:</b>	<b>(\$14,477.95)</b>	<b>(\$120,830.43)</b>	<b>(\$135,308.38)</b>	<b>104-9776 - Alcott Elementary School - Modernization</b>
Project: 105-9772 - Elem. #35 (Spring Mtn Ranch) - New Construction				
Vendor	Encumbrance	Expenditure	Balance	Description
Atkinson, Andelson, Loya, Ruud &	(\$21,979.92)	\$0.00	(\$21,979.92)	Legal Costs
<b>Project Total:</b>	<b>(\$21,979.92)</b>	<b>\$0.00</b>	<b>(\$21,979.92)</b>	<b>105-9772 - Elem. #35 (Spring Mtn Ranch) - New Construction</b>
Project: 114-9776 - Fremont Elementary School - Modernization				
Vendor	Encumbrance	Expenditure	Balance	Description
AWI Builders, Inc	\$489,911.00	\$0.00	\$489,911.00	Construction Contractor
Bell Roofing Company	\$425,000.00	\$0.00	\$425,000.00	Roofing Costs
Bogh Engineering Inc.	\$906,400.00	\$0.00	\$906,400.00	Engineering Costs
CLM Professional Services, Inc.	\$0.00	(\$1,600.00)	(\$1,600.00)	Inspection Costs
Caston, Inc.	\$858,585.00	\$0.00	\$858,585.00	Construction Costs
F.E.C. Electric	\$1,487,000.00	\$0.00	\$1,487,000.00	Electrical Costs
Glore & Associates	\$201,800.00	\$0.00	\$201,800.00	Hardware Supplier
Golden West Moving Systems, Inc.	\$21,185.00	\$0.00	\$21,185.00	Moving Costs
Inland Pacific Tile, Inc.	\$98,000.00	\$0.00	\$98,000.00	Construction Costs
JPI Development Group, Inc.	\$1,190,000.00	\$0.00	\$1,190,000.00	Construction Costs
Marina Landscape, Inc.	\$706,687.62	\$0.00	\$706,687.62	Landscaping Costs
PGC Construction, Inc.	\$390,000.00	\$0.00	\$390,000.00	Construction Contractor
Prospectra Contract Flooring	\$182,670.00	\$0.00	\$182,670.00	Flooring Costs
Queen City Glass Co.	\$177,740.00	\$0.00	\$177,740.00	Construction
Sandy Pringle Associates, Inc.	\$202,960.00	\$0.00	\$202,960.00	Construction Inspection
Southcoast Acoustical Interiors, Inc	\$61,090.00	\$0.00	\$61,090.00	Construction Costs

Project: 114-9776 - Fremont Elementary School - Modernization				
Vendor	Encumbrance	Expenditure	Balance	Description
Spec Construction Co., Inc.	\$2,861,500.00	\$0.00	\$2,861,500.00	Construction Contractor
Stolo Cabinets, Inc.	\$149,460.00	\$0.00	\$149,460.00	Furniture & Equipment
T3 Contractors Corp.	\$367,000.00	\$0.00	\$367,000.00	Construction Costs
TGR Geotechnical, Inc.	\$190,223.00	\$0.00	\$190,223.00	Construction Contractor
Tomahawk Builders, Inc.	\$1,289,000.00	\$0.00	\$1,289,000.00	Construction Contractor
Westland Mechanical	\$523,800.00	\$0.00	\$523,800.00	Construction Contractor
<b>Project Total:</b>	<b>\$12,780,011.62</b>	<b>(\$1,600.00)</b>	<b>\$12,778,411.62</b>	<b>114-9776 - Fremont Elementary School - Modernization</b>
Project: 118-9776 - Harrison Elementary School - Modernization				
Vendor	Encumbrance	Expenditure	Balance	Description
Alliant Consulting, Inc.	\$0.00	(\$5,100.00)	(\$5,100.00)	Labor Compliance
Alpha Decor & Painting, Inc.	(\$4,700.00)	(\$4,725.00)	(\$9,425.00)	Other Construction - Painting
Barry's Security Services, Inc.	(\$1,841.83)	\$0.00	(\$1,841.83)	Security
Design West Engineering, Inc.	\$0.00	(\$3,684.00)	(\$3,684.00)	Engineering Services
Golden West Moving Systems, Inc.	(\$3,352.00)	\$0.00	(\$3,352.00)	Moving Costs
Gregs Sealcoating Co	\$0.00	(\$17,940.00)	(\$17,940.00)	Construction
Hamel Contracting, Inc.	\$0.00	(\$141,823.58)	(\$141,823.58)	Contractor Fees
Leighton Consulting, Inc	\$1,241.06	(\$1,789.15)	(\$548.09)	Site Survey
Marina Landscape, Inc.	\$0.00	(\$67,980.78)	(\$67,980.78)	Landscaping Costs
Simco Mechanical, Inc.	\$0.00	(\$3,013.51)	(\$3,013.51)	Permanent Construction Costs
Vanir Construction Management, Inc.	(\$498.73)	(\$48,700.61)	(\$49,199.34)	Construction Management Fees
<b>Project Total:</b>	<b>(\$9,151.50)</b>	<b>(\$294,756.63)</b>	<b>(\$303,908.13)</b>	<b>118-9776 - Harrison Elementary School - Modernization</b>
Project: 122-9772 - Highgrove Elementary School - New Construction				
Vendor	Encumbrance	Expenditure	Balance	Description
Ruhnau Clarke Architects	\$0.00	(\$322.95)	(\$322.95)	Architect Fees
<b>Project Total:</b>	<b>\$0.00</b>	<b>(\$322.95)</b>	<b>(\$322.95)</b>	<b>122-9772 - Highgrove Elementary School - New Construction</b>
Project: 122-9776 - Highgrove Elementary School - Modernization				
Vendor	Encumbrance	Expenditure	Balance	Description
Alliant Consulting, Inc.	\$0.00	(\$6,247.50)	(\$6,247.50)	Labor Compliance
Apple Valley Communications, Inc.	\$3,846.43	(\$3,846.43)	\$0.00	Construction Costs
Best Contracting Services	\$0.00	(\$104,570.76)	(\$104,570.76)	Construction Costs
Caston, Inc.	\$0.00	(\$68,327.60)	(\$68,327.60)	Construction Costs
Conserve Landcare, Inc.	(\$21,020.00)	(\$50,627.25)	(\$71,647.25)	Construction Costs
Design West Engineering, Inc.	\$0.00	(\$5,271.00)	(\$5,271.00)	Engineering Services
Empyrean Plumbing, Inc.	\$0.00	(\$3,732.00)	(\$3,732.00)	Plumbing Costs
Fence Works	\$8,970.00	\$0.00	\$8,970.00	Fencing
Infinity Structures, Inc.	\$0.00	(\$111,165.45)	(\$111,165.45)	Construction Costs

Project: 122-9776 - Highgrove Elementary School - Modernization				
Vendor	Encumbrance	Expenditure	Balance	Description
K & Z Cabinet Co., Inc.	\$0.00	(\$16,438.15)	(\$16,438.15)	Furniture & Equipment
Lee & Stires, Inc.	\$0.00	(\$3,232.20)	(\$3,232.20)	Construction Costs
Leighton Consulting, Inc	\$5,610.62	\$0.00	\$5,610.62	Site Survey
Mathews Mechanical	(\$107,283.45)	\$0.00	(\$107,283.45)	Construction Costs
R.I.S. Electrical Contractors, Inc.	\$0.00	(\$25,487.35)	(\$25,487.35)	Electrical Costs
Riccardi Floor Covering, Inc.	\$0.00	(\$16,186.05)	(\$16,186.05)	Flooring Costs
Ruhnau Clarke Architects	\$8,961.67	(\$4,458.39)	\$4,503.28	Architect Fees
Simmons and Wood Inc.	\$0.00	(\$23,916.23)	(\$23,916.23)	Construction Costs
Technet Partners Inc.	\$19,079.69	(\$19,079.69)	\$0.00	Technology/Network
Tilden-Coil Constructors	\$0.00	(\$129,540.00)	(\$129,540.00)	Construction Costs
<b>Project Total:</b>	<b>(\$81,835.04)</b>	<b>(\$592,126.05)</b>	<b>(\$673,961.09)</b>	<b>122-9776 - Highgrove Elementary School - Modernization</b>
Project: 128-9776 - Jackson Elementary School - Modernization				
Vendor	Encumbrance	Expenditure	Balance	Description
Bastion Security Inc	\$0.00	(\$9,212.40)	(\$9,212.40)	Security Costs
Ben's Asphalt, Inc.	\$10,490.00	\$0.00	\$10,490.00	Construction Contractor
Burgess Moving And Storage Company	\$0.00	(\$2,320.50)	(\$2,320.50)	Moving Costs
C.T. Georgiou Painting Co.	\$0.00	(\$47,680.50)	(\$47,680.50)	Painting Costs
Caston, Inc.	\$0.00	(\$41,800.00)	(\$41,800.00)	Construction Costs
Champion Electric, Inc.	\$0.00	(\$188,490.93)	(\$188,490.93)	Electrical Costs
Dalke & Sons Construction, Inc.	\$0.00	(\$552,223.25)	(\$552,223.25)	Construction Costs
Erickson-Hall Construction Co.	\$0.00	(\$101,347.40)	(\$101,347.40)	Construction Management
Gafcon, Inc.	\$0.00	(\$4,226.00)	(\$4,226.00)	Project Management
Inland Building Construction Companies, Inc.	\$0.00	(\$93,811.50)	(\$93,811.50)	Construction Costs
Letner Roofing Co.	\$0.00	(\$87,641.00)	(\$87,641.00)	Roofing Costs
Nexus IS, Inc.	(\$24,076.64)	\$0.00	(\$24,076.64)	Materials and Supplies
Office & Ergonomic Solutions, Inc	(\$11,163.58)	\$0.00	(\$11,163.58)	Furniture and Equipment
Platinum Construction, Inc.	\$0.00	(\$59,235.33)	(\$59,235.33)	Construction
R M A Group	\$0.00	(\$23,263.00)	(\$23,263.00)	Site Survey
Simco Mechanical, Inc.	\$0.00	(\$44,745.00)	(\$44,745.00)	Permanent Construction Costs
WLC Architects, Inc.	\$0.00	(\$19,182.50)	(\$19,182.50)	Architect Fees
<b>Project Total:</b>	<b>(\$24,750.22)</b>	<b>(\$1,275,179.31)</b>	<b>(\$1,299,929.53)</b>	<b>128-9776 - Jackson Elementary School - Modernization</b>
Project: 130-9776 - Jefferson Elementary School - Modernization				
Vendor	Encumbrance	Expenditure	Balance	Description
Arrowhead Mechanical, Inc.	\$0.00	(\$15,372.23)	(\$15,372.23)	Construction Costs
Caston, Inc.	\$0.00	(\$75,361.30)	(\$75,361.30)	Construction Costs
Erickson-Hall Construction Co.	\$0.00	(\$55,088.19)	(\$55,088.19)	Construction Management
Geocon West, Inc.	\$0.00	(\$2,626.50)	(\$2,626.50)	Geotechnical Costs



Project: 130-9776 - Jefferson Elementary School - Modernization				
Vendor	Encumbrance	Expenditure	Balance	Description
King Companies	(\$32,425.00)	(\$85.00)	(\$32,510.00)	Moving Costs
Letner Roofing Co.	\$0.00	(\$116,251.07)	(\$116,251.07)	Roofing Costs
Streamline Painting Inc.	\$0.00	(\$9,371.80)	(\$9,371.80)	Painting Costs
<b>Project Total:</b>	<b>(\$32,425.00)</b>	<b>(\$274,156.09)</b>	<b>(\$306,581.09)</b>	<b>130-9776 - Jefferson Elementary School - Modernization</b>
Project: 136-9772 - Longfellow Elementary School - New Construction				
Vendor	Encumbrance	Expenditure	Balance	Description
DLR Group, Inc.	\$0.00	(\$22,511.84)	(\$22,511.84)	Architect Fees
Overland, Pacific & Cutler LLC	\$4,568.84	(\$1,871.25)	\$2,697.59	Real Estate Services
Placeworks	(\$8.98)	(\$5,270.00)	(\$5,278.98)	Community Planning & Design
<b>Project Total:</b>	<b>\$4,559.86</b>	<b>(\$29,653.09)</b>	<b>(\$25,093.23)</b>	<b>136-9772 - Longfellow Elementary School - New Construction</b>
Project: 136-9776 - Longfellow Elementary School - Modernization				
Vendor	Encumbrance	Expenditure	Balance	Description
Cardinal Environmental Consultants, Inc.	\$0.00	(\$5,500.00)	(\$5,500.00)	Environmental Costs
DLR Group, Inc.	\$0.00	(\$12,646.32)	(\$12,646.32)	Architect Fees
Oxbridge Development Inc.	(\$13,268.75)	\$0.00	(\$13,268.75)	Other Planning Costs
<b>Project Total:</b>	<b>(\$13,268.75)</b>	<b>(\$18,146.32)</b>	<b>(\$31,415.07)</b>	<b>136-9776 - Longfellow Elementary School - Modernization</b>
Project: 138-9776 - Madison Elementary School - Modernization				
Vendor	Encumbrance	Expenditure	Balance	Description
Bell Roofing Company	\$0.00	(\$12,109.23)	(\$12,109.23)	Roofing Costs
Bravo Construction Services, Inc.	\$0.00	(\$5,163.53)	(\$5,163.53)	Construction Costs
Burgess Moving And Storage Company	\$1,840.00	(\$3,030.00)	(\$1,190.00)	Moving Costs
C.T. Georgiou Painting Co.	\$0.00	(\$75,749.20)	(\$75,749.20)	Painting Costs
Caston, Inc.	\$0.00	(\$163,470.06)	(\$163,470.06)	Construction Costs
Challenger Sheet Metal, Inc.	\$0.00	(\$4,726.42)	(\$4,726.42)	Construction Costs
Columbia Steel, Inc.	\$0.00	(\$51,627.21)	(\$51,627.21)	Construction Costs
Construction Hardware Co.	\$0.00	(\$32,910.73)	(\$32,910.73)	Construction Costs
Continental Flooring, Inc.	\$0.00	(\$570.00)	(\$570.00)	Flooring Costs
Converse Consultants	\$0.00	(\$1,888.50)	(\$1,888.50)	Site Survey
DAART Engineering Company, Inc.	\$0.00	(\$380.00)	(\$380.00)	Engineering Costs
Easy Network Cabling Inc.	\$3,938.65	\$0.00	\$3,938.65	Structured Network Cabling
Fischer Inc.	\$78,321.76	\$0.00	\$78,321.76	Plumbing Costs
Grainger	\$317.51	\$0.00	\$317.51	Equipment Supplier
Inland Pacific Tile, Inc.	(\$2,514.94)	(\$3,393.76)	(\$5,908.70)	Construction Costs
K & Z Cabinet Co., Inc.	\$0.00	(\$44,818.15)	(\$44,818.15)	Furniture & Equipment
KI, Pallas Textiles, OEI	\$0.00	(\$1,569.54)	(\$1,569.54)	Other
Marina Landscape, Inc.	\$0.00	(\$9,153.25)	(\$9,153.25)	Landscaping Costs

Project: 138-9776 - Madison Elementary School - Modernization				
Vendor	Encumbrance	Expenditure	Balance	Description
Neff Construction, Inc.	\$0.00	(\$7,684.84)	(\$7,684.84)	Construction Costs
Prospectra Contract Flooring	\$0.00	(\$16,748.50)	(\$16,748.50)	Flooring Costs
RVH Constructors, Inc.	\$0.00	(\$77,942.31)	(\$77,942.31)	Construction Costs
Rocky Coast Builders, Inc	\$60,995.20	\$0.00	\$60,995.20	Construction Costs
Southcoast Acoustical Interiors, Inc	\$0.00	(\$35,657.61)	(\$35,657.61)	Construction Costs
T3 Contractors Corp.	(\$45,624.66)	\$11,162.50	(\$34,462.16)	Construction Costs
The Mike Cox Electric, Inc.	(\$129,328.60)	\$0.00	(\$129,328.60)	Electrical Costs
Troxell Communications, Inc.	(\$9,831.95)	(\$5,328.82)	(\$15,160.77)	Technology Costs
<b>Project Total:</b>	<b>(\$41,887.03)</b>	<b>(\$542,759.16)</b>	<b>(\$584,646.19)</b>	<b>138-9776 - Madison Elementary School - Modernization</b>

Project: 140-9772 - Magnolia Elementary School - New Construction				
Vendor	Encumbrance	Expenditure	Balance	Description
ATI Architects And Engineers	\$0.00	(\$18,664.64)	(\$18,664.64)	Architect Fees
Geocon West, Inc.	\$0.00	(\$718.50)	(\$718.50)	Geotechnical Costs
Kompan, Inc.	\$0.00	(\$31,717.23)	(\$31,717.23)	Playground Equipment
State Water Resources Control Board	\$509.00	(\$509.00)	\$0.00	Utilities
<b>Project Total:</b>	<b>\$509.00</b>	<b>(\$51,609.37)</b>	<b>(\$51,100.37)</b>	<b>140-9772 - Magnolia Elementary School - New Construction</b>

Project: 140-9776 - Magnolia Elementary School - Modernization				
Vendor	Encumbrance	Expenditure	Balance	Description
ATI Architects And Engineers	\$0.00	(\$47,808.08)	(\$47,808.08)	Architect Fees
Alliant Consulting, Inc.	(\$452.50)	\$0.00	(\$452.50)	Labor Compliance
Bithell Inc.	\$0.00	(\$14,165.35)	(\$14,165.35)	Other Construction - Painting
Bogh Engineering Inc.	\$0.00	(\$67,806.39)	(\$67,806.39)	Engineering Costs
Champion Electric, Inc.	\$0.00	(\$140,630.40)	(\$140,630.40)	Electrical Costs
Donald M. Hoover Company	\$0.00	(\$8,369.50)	(\$8,369.50)	Construction Costs
Franklin Mechanical Systems, Inc.	\$0.00	(\$24,108.53)	(\$24,108.53)	Construction Costs
Gafcon, Inc.	\$0.00	(\$2,719.50)	(\$2,719.50)	Project Management
Golden West Moving Systems, Inc.	(\$4,935.00)	\$0.00	(\$4,935.00)	Moving Costs
Horizons Construction Co. Int'l, Inc.	\$0.00	(\$33,832.35)	(\$33,832.35)	Construction
Infinity Structures, Inc.	\$0.00	(\$4,987.50)	(\$4,987.50)	Construction Costs
Inland Building Construction Companies, Inc.	\$0.00	(\$71,925.45)	(\$71,925.45)	Construction Costs
Inland Pacific Tile, Inc.	\$0.00	(\$712.50)	(\$712.50)	Construction Costs
Interpipe Contracting, Inc.	\$0.00	(\$2,375.00)	(\$2,375.00)	Plumbing Contractor
Nexus IS, Inc.	\$0.00	(\$6,898.67)	(\$6,898.67)	Materials and Supplies
Office & Ergonomic Solutions, Inc	\$0.00	(\$15,369.20)	(\$15,369.20)	Furniture and Equipment
Rite-Way Roof Corporation	\$0.00	(\$112,460.71)	(\$112,460.71)	Roofing Costs
SWPPP CAL	\$0.00	(\$4,970.00)	(\$4,970.00)	Other
Southcoast Acoustical Interiors, Inc	\$0.00	(\$1,000.00)	(\$1,000.00)	Construction Costs

Project: 140-9776 - Magnolia Elementary School - Modernization				
Vendor	Encumbrance	Expenditure	Balance	Description
Southland Inspections, Inc.	\$0.00	(\$16,200.00)	(\$16,200.00)	Inspection Costs
Stolo Cabinets, Inc.	\$0.00	(\$18,354.00)	(\$18,354.00)	Furniture & Equipment
Technet Partners Inc.	\$54,032.34	\$0.00	\$54,032.34	Technology/Network
Tilden-Coil Constructors	\$0.00	(\$44,676.41)	(\$44,676.41)	Construction Costs
<b>Project Total:</b>	<b>\$48,644.84</b>	<b>(\$639,369.54)</b>	<b>(\$590,724.70)</b>	<b>140-9776 - Magnolia Elementary School - Modernization</b>

Project: 142-9776 - Monroe Elementary School - Modernization				
Vendor	Encumbrance	Expenditure	Balance	Description
Amtek Construction	\$2,693,333.00	\$0.00	\$2,693,333.00	Construction Contractor
Bravo Construction Services, Inc.	\$2,341,277.00	\$0.00	\$2,341,277.00	Construction Costs
Burgess Moving And Storage Company	\$1,644.30	\$0.00	\$1,644.30	Moving Costs
Canyon Steel Fabricators, Inc.	\$998,000.00	\$0.00	\$998,000.00	Construction
Caston, Inc.	\$338,862.00	\$0.00	\$338,862.00	Construction Costs
Crew, Inc.	\$897,720.00	\$0.00	\$897,720.00	Construction Costs
Erickson-Hall Construction Co.	\$0.00	(\$10,000.00)	(\$10,000.00)	Construction Management
Fischer Inc.	\$1,989,000.00	\$0.00	\$1,989,000.00	Plumbing Costs
Fusion Sign And Design, Inc.	\$0.00	(\$758.36)	(\$758.36)	Signage Costs
Gafcon, Inc.	\$25,140.00	(\$45.00)	\$25,095.00	Project Management
HMC Architects	\$0.00	(\$850.00)	(\$850.00)	Architect Fees
Hamel Contracting, Inc.	\$2,763,016.00	\$0.00	\$2,763,016.00	Contractor Fees
Infinity Structures, Inc.	\$852,000.00	\$0.00	\$852,000.00	Construction Costs
Keenan Associates	\$104,855.00	(\$104,855.00)	\$0.00	Insurance
Knowland Construction Services	\$247,104.00	\$0.00	\$247,104.00	Construction Costs
Leighton Consulting, Inc	\$339,500.00	\$0.00	\$339,500.00	Site Survey
Letner Roofing Co.	\$1,165,600.00	\$0.00	\$1,165,600.00	Roofing Costs
McKernan Inc.	\$593,100.00	\$0.00	\$593,100.00	Construction Contractor
N E P Painting Contractor's, Inc.	\$245,000.00	\$0.00	\$245,000.00	Commercial Painters
New Vendor	\$43,850.00	\$0.00	\$43,850.00	
Nuway, Inc.	\$418,900.00	\$0.00	\$418,900.00	Construction Contractor
Progressive Surface Solutions, LLC	\$567,520.00	\$0.00	\$567,520.00	Construction Contractor
Riverside, City Of	\$96,652.00	(\$96,652.00)	\$0.00	Permits & Fees
Simco Mechanical, Inc.	\$1,192,500.00	\$0.00	\$1,192,500.00	Permanent Construction Costs
Stolo Cabinets, Inc.	\$231,874.00	\$0.00	\$231,874.00	Furniture & Equipment
<b>Project Total:</b>	<b>\$18,146,447.30</b>	<b>(\$213,160.36)</b>	<b>\$17,933,286.94</b>	<b>142-9776 - Monroe Elementary School - Modernization</b>

Project: 260-9776 - University Middle School - Modernization				
Vendor	Encumbrance	Expenditure	Balance	Description
Cardinal Environmental Consultants, Inc.	\$0.00	(\$2,500.00)	(\$2,500.00)	Environmental Costs
Erickson-Hall Construction Co.	\$0.00	(\$10,000.00)	(\$10,000.00)	Construction Management



Project: 260-9776 - University Middle School - Modernization				
Vendor	Encumbrance	Expenditure	Balance	Description
<b>Project Total:</b>	<b>\$0.00</b>	<b>(\$12,500.00)</b>	<b>(\$12,500.00)</b>	<b>260-9776 - University Middle School - Modernization</b>
Project: 310-9772 - Arlington High School - New Construction				
Vendor	Encumbrance	Expenditure	Balance	Description
Placeworks	\$0.00	(\$832.50)	(\$832.50)	Community Planning & Design
Ruhnau Clarke Architects	\$0.00	(\$144,296.55)	(\$144,296.55)	Architect Fees
<b>Project Total:</b>	<b>\$0.00</b>	<b>(\$145,129.05)</b>	<b>(\$145,129.05)</b>	<b>310-9772 - Arlington High School - New Construction</b>
Project: 310-9776 - Arlington High School - Modernization				
Vendor	Encumbrance	Expenditure	Balance	Description
All Star Air Systems Inc	\$488,324.00	(\$31,015.60)	\$457,308.40	Construction
Alliant Consulting, Inc.	\$2,050.00	(\$2,050.00)	\$0.00	Labor Compliance
Bell Roofing Company	\$522,931.00	\$0.00	\$522,931.00	Roofing Costs
Bogh Engineering Inc.	\$1,090,963.00	(\$208,097.65)	\$882,865.35	Engineering Costs
CDW-Government Inc.	\$17,820.98	\$0.00	\$17,820.98	Plan Check Fees
California Commercial Pools, Inc.	\$1,994,900.00	\$0.00	\$1,994,900.00	Pool Supplies
Caston, Inc.	\$629,281.00	(\$5,394.10)	\$623,886.90	Construction Costs
Continental Marble and Tile Co.	\$59,776.00	(\$538.17)	\$59,237.83	Other Construction
Crew, Inc.	\$473,437.00	\$0.00	\$473,437.00	Construction Costs
DAART Engineering Company, Inc.	\$45,624.00	(\$429.16)	\$45,194.84	Engineering Costs
Division Of The State Architect	\$1,980.00	(\$1,980.00)	\$0.00	Plan Check Fees
F.E.C. Electric	\$0.00	(\$115,894.40)	(\$115,894.40)	Electrical Costs
First Construction Services, Inc.	\$0.00	(\$11,590.00)	(\$11,590.00)	Inspection Costs
Gafcon, Inc.	\$0.00	(\$3,216.31)	(\$3,216.31)	Project Management
Infinity Structures, Inc.	\$794,742.00	(\$618,812.42)	\$175,929.58	Construction Costs
Inland Empire Landscape, Inc.	\$140,789.00	(\$26,855.64)	\$113,933.36	Landscaping
Leighton Consulting, Inc	(\$254,763.24)	(\$33,868.96)	(\$288,632.20)	Site Survey
New Dimension Masonry, Inc.	\$248,982.85	(\$313,564.85)	(\$64,582.00)	Construction
New Star Construction Services, Inc.	\$140,826.00	(\$5,334.82)	\$135,491.18	Construction Contractor
Queen City Glass Co.	\$324,886.00	(\$2,393.62)	\$322,492.38	Construction
RND Contractors Inc.	\$278,775.00	(\$70,525.00)	\$208,250.00	Construction
Rc Construction, Inc.	\$1,831,489.00	(\$286,587.40)	\$1,544,901.60	Construction Costs
Signature Flooring, Inc.	\$54,076.00	\$0.00	\$54,076.00	Flooring Construction
Southcoast Acoustical Interiors, Inc	\$86,328.00	\$0.00	\$86,328.00	Construction Costs
Tilden-Coil Constructors	\$0.00	(\$139,340.00)	(\$139,340.00)	Construction Costs
Valley Industrial Mechanical	\$776,763.00	(\$128,710.75)	\$648,052.25	Construction
<b>Project Total:</b>	<b>\$9,749,980.59</b>	<b>(\$2,006,198.85)</b>	<b>\$7,743,781.74</b>	<b>310-9776 - Arlington High School - Modernization</b>

Project: 320-9772 - King High School - New Construction				
Vendor	Encumbrance	Expenditure	Balance	Description
Alliant Consulting, Inc.	(\$2,125.00)	\$0.00	(\$2,125.00)	Labor Compliance
Fusion Sign And Design, Inc.	(\$613.36)	(\$145.00)	(\$758.36)	Signage Costs
Inland Inspections & Consulting	(\$41,800.00)	\$0.00	(\$41,800.00)	Consultant Costs
River City Testing	(\$58,330.00)	\$0.00	(\$58,330.00)	Construction Testing
Southern California Edison Co	(\$3,026.60)	\$0.00	(\$3,026.60)	Utility - Electric Company
<b>Project Total:</b>	<b>(\$105,894.96)</b>	<b>(\$145.00)</b>	<b>(\$106,039.96)</b>	<b>320-9772 - King High School - New Construction</b>

Project: 330-9776 - North High School - Modernization				
Vendor	Encumbrance	Expenditure	Balance	Description
Go Architects, Inc.	\$0.00	(\$27,750.00)	(\$27,750.00)	Architects Fees
Tilden-Coil Constructors	\$0.00	(\$24,062.50)	(\$24,062.50)	Construction Costs
<b>Project Total:</b>	<b>\$0.00</b>	<b>(\$51,812.50)</b>	<b>(\$51,812.50)</b>	<b>330-9776 - North High School - Modernization</b>

Project: 340-9772 - Poly High School - New Construction				
Vendor	Encumbrance	Expenditure	Balance	Description
Apex Fire Protection, Inc.	\$27,780.00	\$0.00	\$27,780.00	Construction Costs
Arrowhead Mechanical, Inc.	\$258,000.00	\$0.00	\$258,000.00	Construction Costs
Bogh Engineering Inc.	\$1,252,000.00	(\$54,593.72)	\$1,197,406.28	Engineering Costs
Canyon Steel Fabricators, Inc.	\$326,464.00	\$0.00	\$326,464.00	Construction
Cardinal Environmental Consultants, Inc.	\$4,750.00	\$0.00	\$4,750.00	Environmental Costs
Caston, Inc.	\$238,585.00	\$0.00	\$238,585.00	Construction Costs
Construction Electric Inc	\$0.00	(\$48,896.50)	(\$48,896.50)	Electrical Costs
Crew, Inc.	\$534,320.00	(\$96,043.20)	\$438,276.80	Construction Costs
Dan Worley Plumbing Inc.	\$354,000.00	(\$9,500.00)	\$344,500.00	Plumbing Contractor
Gafcon, Inc.	\$0.00	(\$721.50)	(\$721.50)	Project Management
Geocon West, Inc.	\$183,743.00	(\$9,225.50)	\$174,517.50	Geotechnical Costs
Letner Roofing Co.	\$224,766.00	\$0.00	\$224,766.00	Roofing Costs
Majestic Masonry, Inc.	\$533,786.00	\$0.00	\$533,786.00	Construction Contractor
State Water Resources Control Board	(\$465.00)	\$0.00	(\$465.00)	Utilities
Tilden-Coil Constructors	\$0.00	(\$24,331.63)	(\$24,331.63)	Construction Costs
<b>Project Total:</b>	<b>\$3,937,729.00</b>	<b>(\$243,312.05)</b>	<b>\$3,694,416.95</b>	<b>340-9772 - Poly High School - New Construction</b>

Project: 340-9776 - Poly High School - Modernization				
Vendor	Encumbrance	Expenditure	Balance	Description
Conserve Landcare, Inc.	\$0.00	(\$78,121.35)	(\$78,121.35)	Construction Costs
Gafcon, Inc.	\$0.00	(\$3,334.50)	(\$3,334.50)	Project Management
Geocon West, Inc.	\$0.00	(\$48,572.51)	(\$48,572.51)	Geotechnical Costs
Hamel Contracting, Inc.	\$0.00	(\$145,138.86)	(\$145,138.86)	Contractor Fees
JPI Development Group, Inc.	\$45,673.00	(\$171.58)	\$45,501.42	Construction Costs

Project: 340-9776 - Poly High School - Modernization				
Vendor	Encumbrance	Expenditure	Balance	Description
MVC Enterprises Inc	\$0.00	(\$440,308.35)	(\$440,308.35)	Construction
R.I.S. Electrical Contractors, Inc.	\$0.00	(\$30,835.00)	(\$30,835.00)	Electrical Costs
Schroeder Iron Corporation	\$0.00	(\$39,242.00)	(\$39,242.00)	Other Construction
Southland Inspections, Inc.	\$0.00	(\$16,200.00)	(\$16,200.00)	Inspection Costs
State Water Resources Control Board	\$597.00	(\$597.00)	\$0.00	Utilities
Tilden-Coil Constructors	\$0.00	(\$101,557.35)	(\$101,557.35)	Construction Costs
WLC Architects, Inc.	\$0.00	(\$16,829.29)	(\$16,829.29)	Architect Fees
<b>Project Total:</b>	<b>\$46,270.00</b>	<b>(\$920,907.79)</b>	<b>(\$874,637.79)</b>	<b>340-9776 - Poly High School - Modernization</b>
Project: 460-9776 - Sunshine Early Childhood Center - Modernization				
Vendor	Encumbrance	Expenditure	Balance	Description
Empyrean Plumbing, Inc.	\$0.00	(\$21,315.26)	(\$21,315.26)	Plumbing Costs
Erickson-Hall Construction Co.	\$0.00	(\$83,632.00)	(\$83,632.00)	Construction Management
Gafcon, Inc.	\$0.00	(\$3,040.50)	(\$3,040.50)	Project Management
Go Architects, Inc.	\$0.00	(\$19,885.38)	(\$19,885.38)	Architects Fees
Inland Building Construction Companies, Inc.	(\$27,038.62)	(\$184,911.08)	(\$211,949.70)	Construction Costs
Inland Inspections & Consulting	\$0.00	(\$34,200.00)	(\$34,200.00)	Consultant Costs
Silver Creek Industries, Inc.	\$30,144.93	(\$30,144.93)	\$0.00	Construction Costs
<b>Project Total:</b>	<b>\$3,106.31</b>	<b>(\$377,129.15)</b>	<b>(\$374,022.84)</b>	<b>460-9776 - Sunshine Early Childhood Center - Modernization</b>
Project: 612-0000 - Facilities Projects - Undistributed (CLOSED)				
Vendor	Encumbrance	Expenditure	Balance	Description
Atkinson, Andelson, Loya, Ruud &	\$75,000.00	(\$112.63)	\$74,887.37	Legal Costs
Colbi Technologies, Inc.	\$0.00	(\$9,583.75)	(\$9,583.75)	Software Support
Cordoba Corporation	\$0.00	(\$22,273.60)	(\$22,273.60)	Construction Management
Jeanette L. Garcia & Associates	(\$20,000.00)	(\$10,000.00)	(\$30,000.00)	Consultant
PQBids, Inc.	\$12,500.00	(\$12,500.00)	\$0.00	Bid Prequalification
Southern California News Group	\$0.00	(\$2,059.20)	(\$2,059.20)	Advertising
<b>Project Total:</b>	<b>\$67,500.00</b>	<b>(\$56,529.18)</b>	<b>\$10,970.82</b>	<b>612-0000 - Facilities Projects - Undistributed (CLOSED)</b>
Project: 721-9772 - Casa Blanca - New Construction				
Vendor	Encumbrance	Expenditure	Balance	Description
FUSCOE Engineering Inc.	\$0.00	(\$7,215.00)	(\$7,215.00)	Engineering Services
Go Architects, Inc.	\$0.00	(\$11,875.00)	(\$11,875.00)	Architects Fees
<b>Project Total:</b>	<b>\$0.00</b>	<b>(\$19,090.00)</b>	<b>(\$19,090.00)</b>	<b>721-9772 - Casa Blanca - New Construction</b>
Project: 722-9772 - Eastside - New Construction				
Vendor	Encumbrance	Expenditure	Balance	Description
FirstCarbon Solutions	\$18,500.00	\$0.00	\$18,500.00	Energy Management



Project: 722-9772 - Eastside - New Construction				
Vendor	Encumbrance	Expenditure	Balance	Description
Magnolia Environmental, LLC	(\$3,831.00)	\$0.00	(\$3,831.00)	Asbestos Testing
Overland, Pacific & Cutler LLC	\$40,838.47	(\$18,225.78)	\$22,612.69	Real Estate Services
Placeworks	\$0.00	(\$20,877.30)	(\$20,877.30)	Community Planning & Design
Riverside Unified School District	(\$826,260.03)	\$826,260.03	\$0.00	Project Planning
<b>Project Total:</b>	<b>(\$770,752.56)</b>	<b>\$787,156.95</b>	<b>\$16,404.39</b>	<b>722-9772 - Eastside - New Construction</b>
<b>Grand Total:</b>	<b>\$43,918,343.06</b>	<b>(\$8,687,694.02)</b>	<b>\$35,230,649.04</b>	<b>Riverside Unified School District</b>

# Completed Measure O Projects



# Sierra Middle School

## Measure O Campus Improvements

### Project Description

Sierra Middle School was built in 1957. Under Measure O, Sierra Middle School will receive a light, medium and heavy modernization. The different stages of modernization consist of HVAC replacement, light and fire alarm upgrades, ADA accessibility improvements, renovation of SDC classrooms, interior finishes and parking lot expansion.

<b>Project Group:</b>	Group A
<b>Architect:</b>	TBP Architects
<b>DSA Status:</b>	<b>Approved</b> on February 19, 2018
<b>Construction:</b>	<b>Completed</b> – November 2019
Construction Status:	Completed
<b>Total Project Cost:</b>	\$8,576,180

### Project Status

This project has been completed



## Sierra Middle School

### Completed Project Pictures



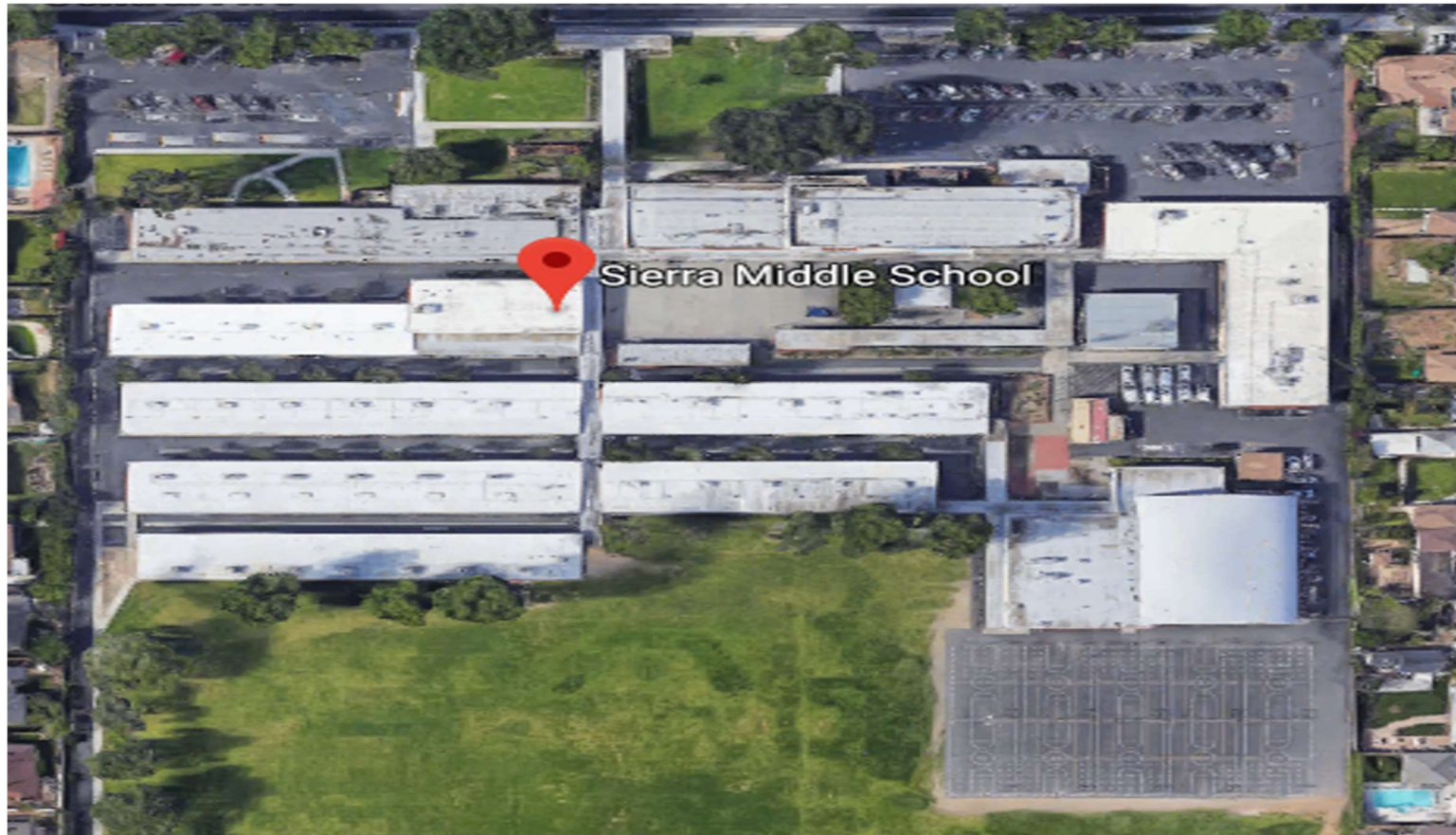
HVAC start up on Gymnasium roof



Front fence and handrails

## Sierra Middle School

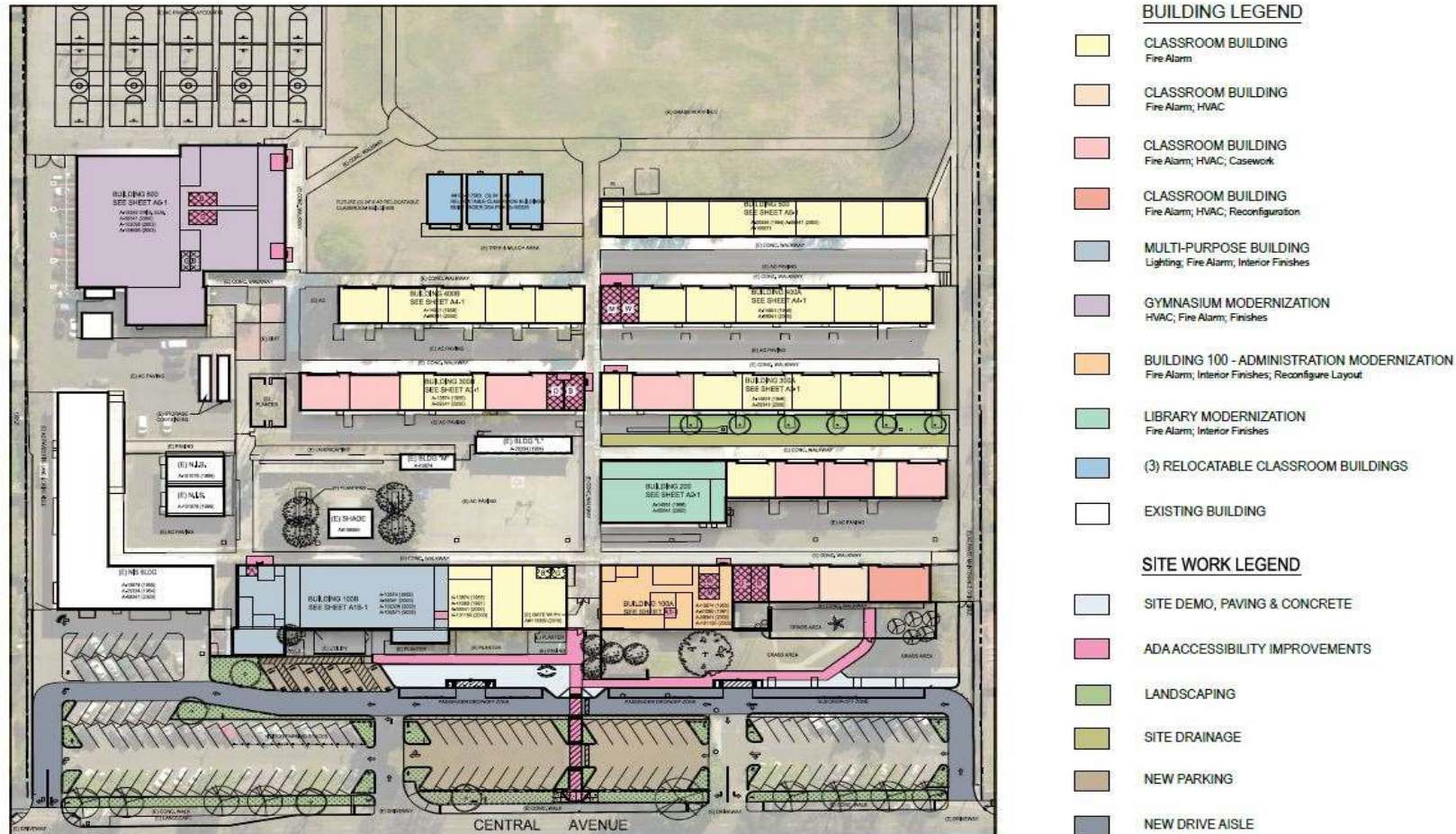
### Existing Site Plan





# Sierra Middle School

## New Site Plan





# Sierra Middle School

## Project Renderings



# Highgrove Elementary School

## Measure O Campus Improvements

### Project Description

Highgrove Elementary School was built in 1956. The site currently has 26 portable classroom buildings. Under Measure O, Highgrove Elementary School will receive general site improvements, including grading, utilities, paving, new parking and drop-off, a new kinder two-story classroom building with 12 classrooms, and a new HVAC system, playground equipment, roof replacement, interior finishes, and accessibility upgrades.

<b>Project Group:</b>	Group A
<b>Architect:</b>	Ruhnau Clarke Architects
<b>DSA Status:</b>	<b>Approved</b> on February 6, 2019
<b>Bidding &amp; Award:</b>	<b>Completed</b>
<b>Construction:</b>	<b>Completed</b> – August 2020
<b>Project Budget:</b>	\$24,538,218

### Project Status

- ✓ This project is complete
- ✓ The CBOC committee held a meeting at Highgrove on January 29, 2020 and took a tour of the modernized school

# Highgrove Elementary School

## Completed Construction Pictures



New classroom & furniture



New HVAC Units



New grass and sidewalks



# Highgrove Elementary School

## Completed Construction Pictures



New landscaping between existing buildings



New workrooms



New kinder play area

# Highgrove Elementary School

## Existing Site Plan





# Highgrove Elementary School

## Project Rendering





# Harrison Elementary School

## Measure O Campus Improvements

### Project Description

Harrison Elementary School was built in 1964. The site has 11 portable classroom buildings. Under Measure O, Harrison Elementary School will receive various improvements including new parking and drop-off area, new classroom building with 5 classrooms, new HVAC system, new frontage to administration, and removal of portables.

<b>Project Group:</b>	Group A
<b>Architect:</b>	ATI Architects & Engineers
<b>DSA Status:</b>	<b>Approved</b> on March 7, 2019
<b>Bidding &amp; Award:</b>	<b>Completed</b>
<b>Construction:</b>	<b>Completed - April 2021</b>
<b>Project Budget:</b>	\$12,369,531

### Project Status

- ✓ Landscaping has been completed
- ✓ Final notices of completion will be submitted to the Board on July 15, 2021

# Harrison Elementary School

## Completed Construction Pictures



Completed Administration Building



New Classroom Building



# Harrison Elementary School

## Project Rendering





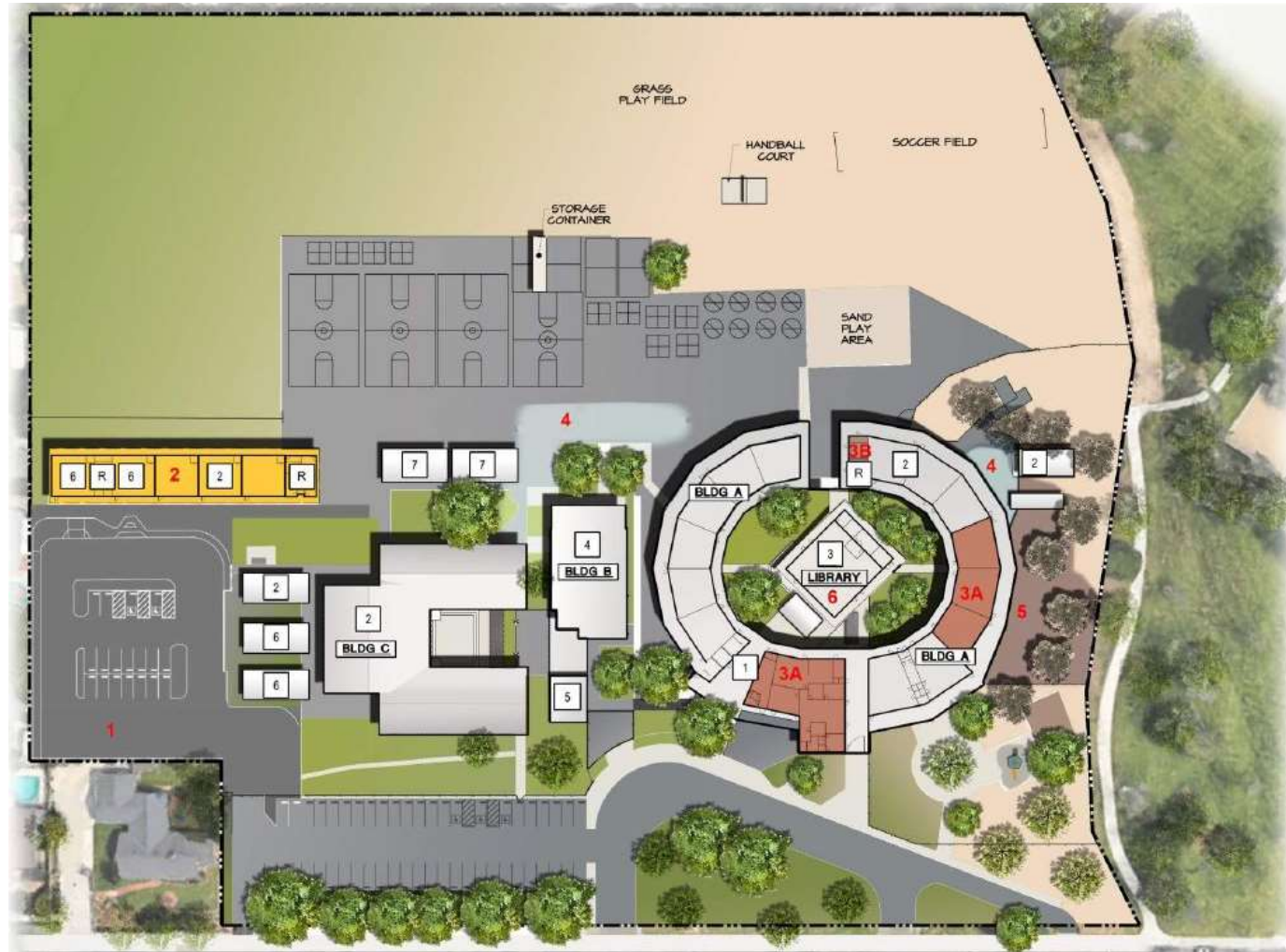
# Harrison Elementary School

## Existing Site Plan



# Harrison Elementary School

## New Site Plan



### NEW AND MODERNIZATION

- | 1 | ADMINISTRATION          |
|---|-------------------------|
| 2 | CLASSROOMS              |
| 3 | LIBRARY/MEDIA           |
| 4 | AUDITORIUM/MPR/CAFETRIA |
| 5 | KITCHEN                 |
| 6 | SPECIAL                 |
| 7 | BAND/RSP                |
| R | RESTROOM                |

### PRIORITY # DESCRIPTION

- | PRIORITY # | DESCRIPTION  |
|------------|--|
| 1          | NEW PARENT PARKING AND DROP OFF AREA                     |
| 2          | REPLACE PORTABLES WITH NEW CLASSROOM BUILDING (PROPOSED) |
| 3A         | REARRANGE ADMIN OFFICE AND MODERNIZE KINDER CLASSROOMS   |
| 3B         | RESTROOMS MODERNIZATION                                  |
| 4          | IMPROVE DRAINAGE CONDITIONS, SHADE STRUCTURES AND        |
| 5          | NEW PLAYGROUND AREA ON EAST SIDE OF BUILDING A           |
| 6          | REPLACE HVAC<br>REBALANCE HVAC AT LIBRARY                |
| 7          | REPLACE SOME EXTERIOR HID LIGHTING WITH LED              |
| 8          | REPLACE FIRE ALARM SYSTEM                                |

# Jefferson Elementary School

## Measure O Campus Improvements

### Project Description

Jefferson Elementary School was built in 1948. The site currently has 16 portable classroom buildings. Under Measure O, Jefferson Elementary School will receive a new 1-story 6 kinder classroom building and corresponding new playground area, full modernization of Buildings M and N including sinks, cabinetry, roofing, HVAC, windows, lighting, paint, drinking fountain replacement, and upgrades to restroom facilities and demolition of 5 classrooms.

<b>Project Group:</b>	Group A
<b>Architect:</b>	WLC Architects
<b>DSA Status:</b>	<b>Approved</b> on February 28, 2019
<b>Bidding &amp; Award:</b>	<b>Completed</b>
<b>Construction:</b>	<b>Completed</b> – April 2021
<b>Project Budget:</b>	\$18,407,115

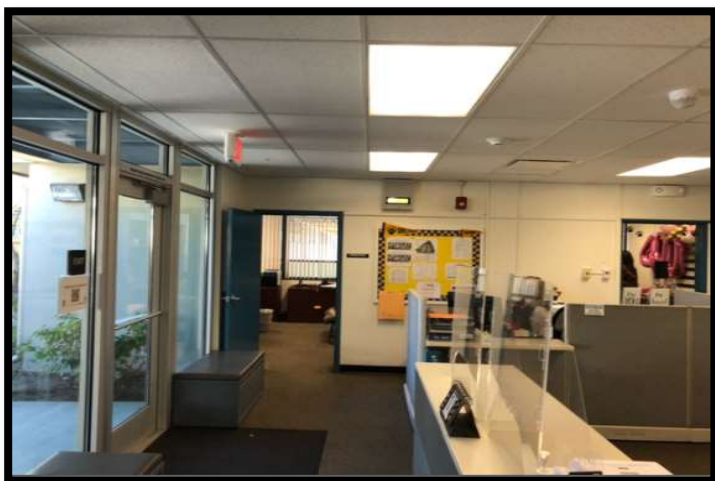
### Project Status

- ✓ All construction has been completed
- ✓ The project is under its 1 year warranty period

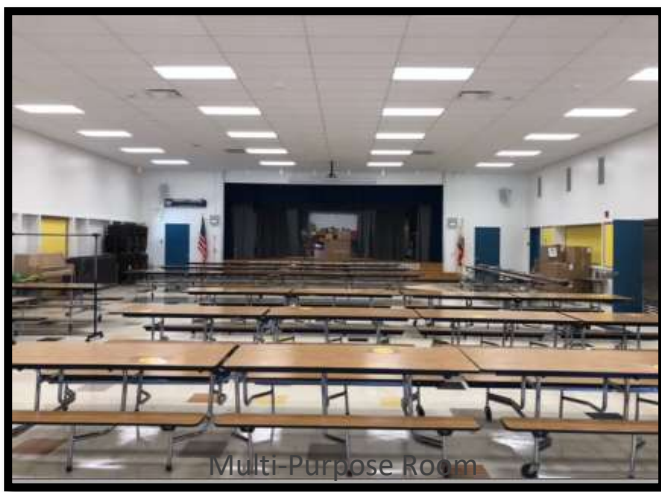


# Jefferson Elementary School

## Completed Construction Pictures



Administration Remodel Building



Multi Purpose Room



New Kinder Wing

# Jefferson Elementary School

## Kinder Exterior Building Rendering





# Jefferson Elementary School

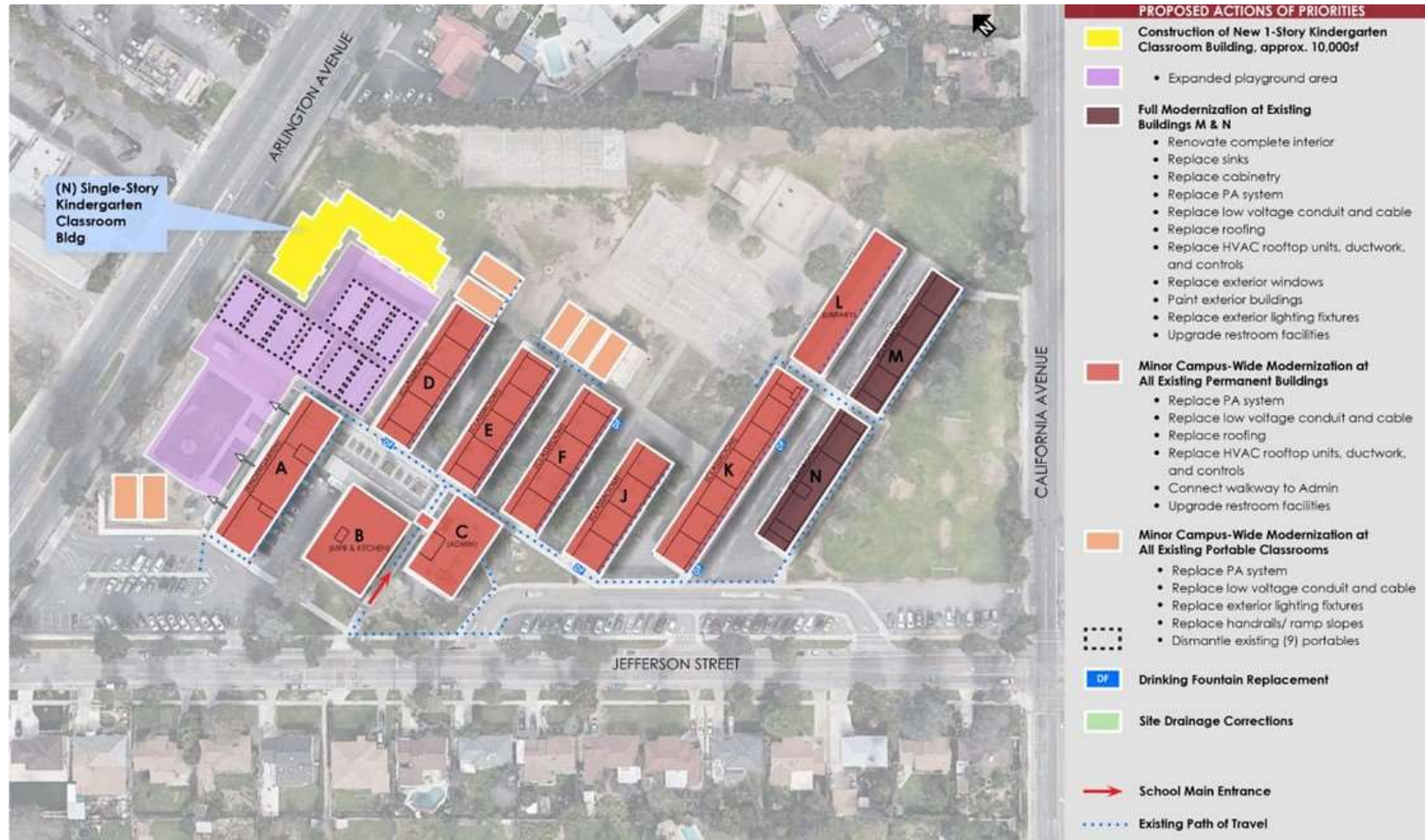
## Existing Site Plan





# Jefferson Elementary School

## New Site Plan



# Madison Elementary School

## Measure O Campus Improvements

### Project Description

Madison Elementary School was built in 1952 on a 10 acres site. The site currently has 22 portable classroom buildings. Under Measure O, Madison Elementary School will receive a new 5 kinder classroom building, new kinder play area, new drop-off and parking lot, new lunch shelter, curb appeal improvements, and removal of 5 portables.

<b>Project Group:</b>	Group A
<b>Architect:</b>	LPA Architects
<b>DSA Status:</b>	<b>Approved</b> on March 29, 2019
<b>Bidding &amp; Award:</b>	<b>Completed</b>
<b>Construction:</b>	June 2019 – March 2021
<b>Project Budget:</b>	\$18,631,461

### Project Status

#### Building G

- ✓ Building G new kinder wing is completed and occupied
- ✓ Playground equipment and ball courts have been completed
- ✓ lunch shelter and relocated lunch shelter are being used
- ✓ Interim housing portables have been removed from site

#### Building A

- ✓ All Casework has been installed
- ✓ All plumbing items have been completed
- ✓ Building has been occupied by staff
- ✓ Minor punch list items are ongoing

# Madison Elementary School

## Completed Construction Pictures





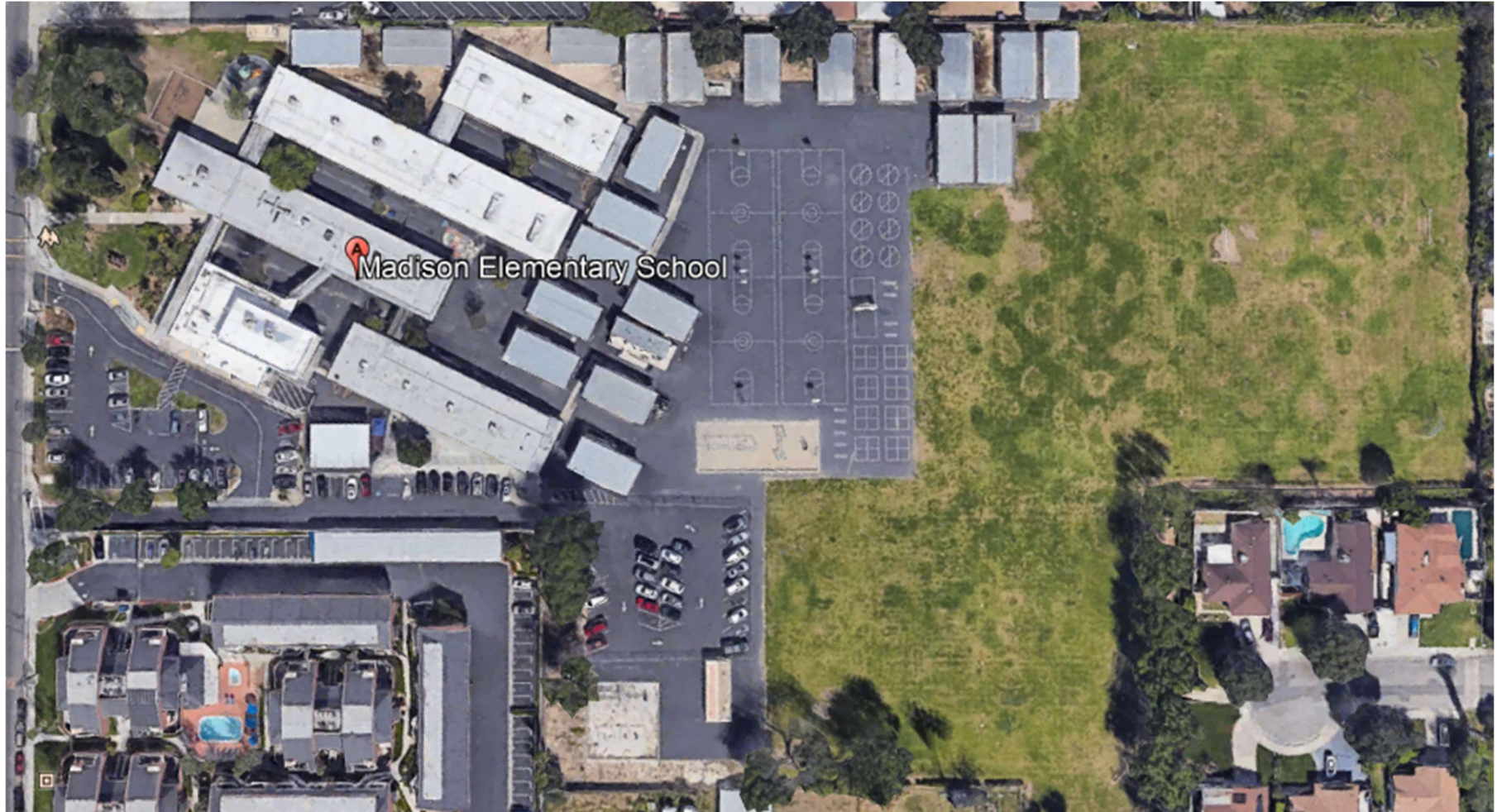
# Madison Elementary School

## Project Renderings



# Madison Elementary School

## Existing Site Plan





# Madison Elementary School

## New Site Plan

