

BOND ADVISORY TEAM MEETING #4

May 12, 2025



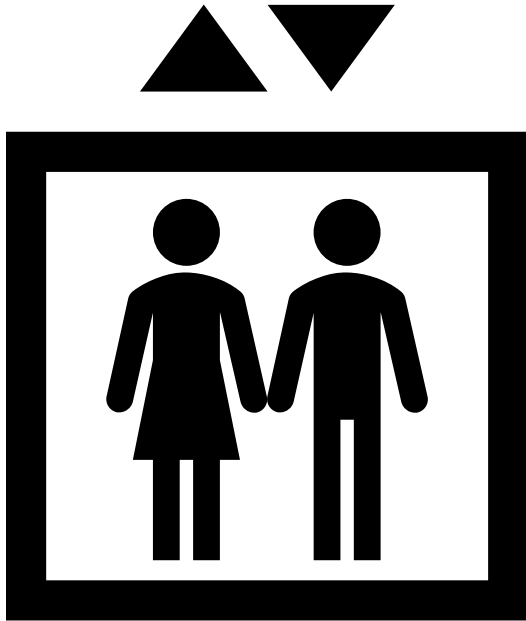
Welcome Back!



Introductions

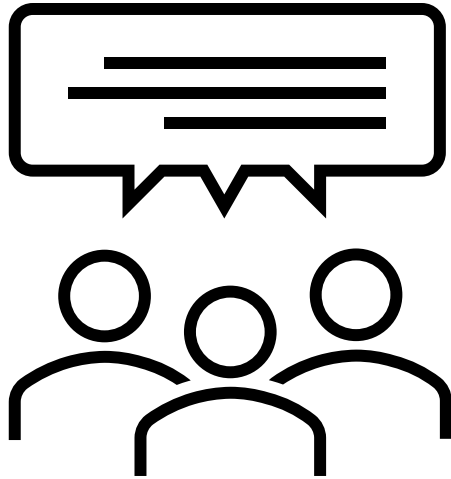
Please introduce yourself including your name and role (e.g. parent representative, student representative, school board member, etc.)

Elevator Speech



Bond Advisory Team Role and Responsibility on the 2024
Bond Program

Bond Advisory Team (BAT) Feedback



Members are invited to share feedback that they have regarding the Bond Program and feedback that they have received/heard from the community

- What is going well?
- What are your current concerns?
- What have feedback have you received from the community whether hearing feedback first-hand or reading comments on social media platforms?
- Any general questions?

Craig Road Elementary

Bond Advisory Team



Turner & Townsend
Heery



INTEGRUS

AGENDA

Intro

Schedule

Visioning Process

Feedback and Guiding Principles

Activity "Blink" Exercise

Next Steps

PROJECT COMMITTEE

DESIGN TEAM

ED SPECS

Information gathering to fully define project goals and figure out approximately how much space is needed and the quality of the space.

SCHEMATIC DESIGN

Explore approaches to design and construction. Establish the conceptual design and make decisions on the major project systems.

DESIGN DEVELOPMENT

Further refinement and advancement of the design to finalize spaces, systems, and most material have been selected.

CONSTRUCTION DOCUMENTS

Design is finalized and developed into a precise and thorough set of documents that the contractor can build from.

BIDDING & NEGOTIATION

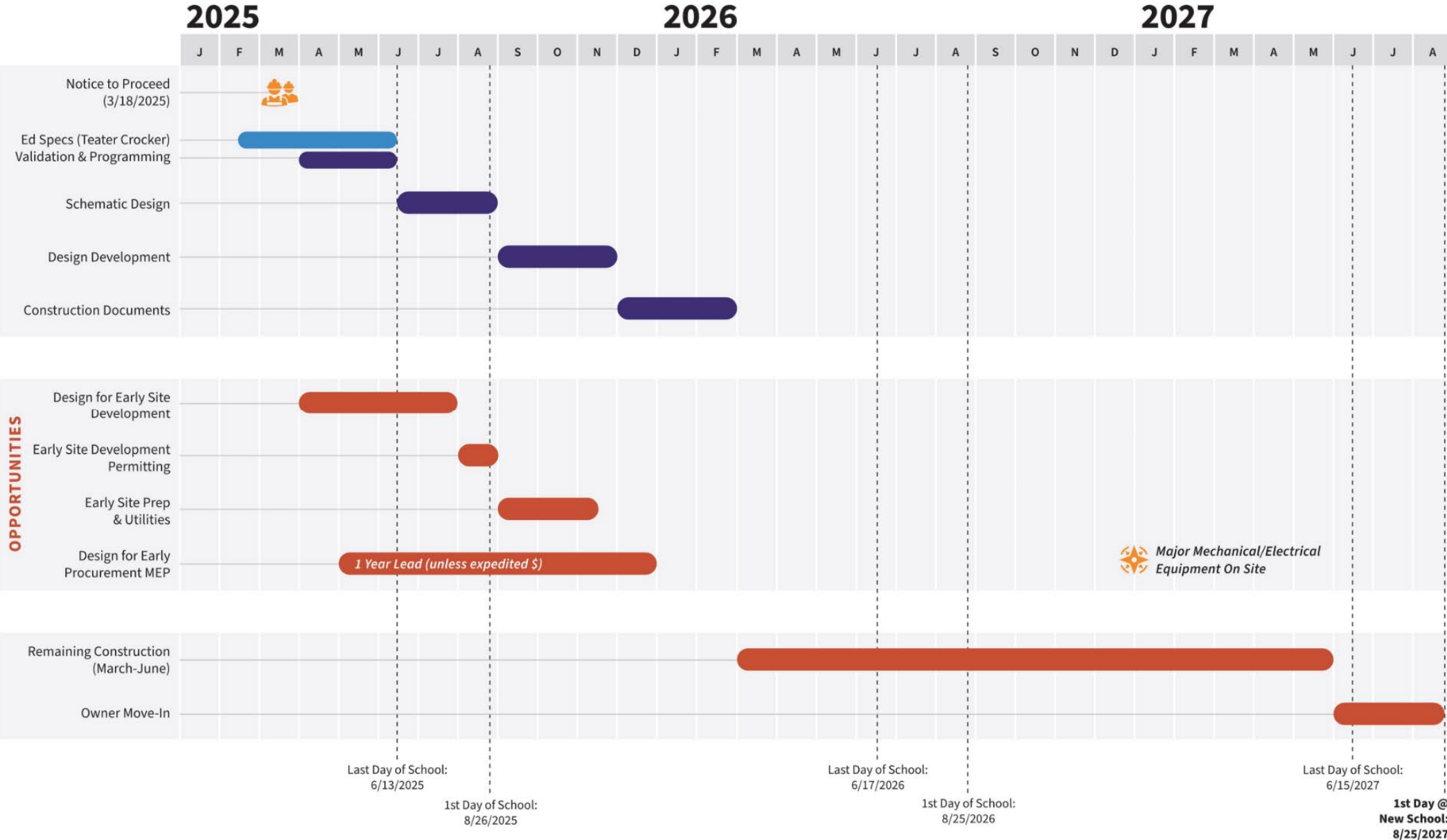
Documents are issued to contractors for bid. Questions and clarifications are answered as necessary until bids are accepted.

CONSTRUCTION

During construction there will be regular site walks and meetings to track project development.



Preliminary Schedule



Project Influencers

District Vision, Goals & Expectations

School Board

Bond Advisory Committee

Students

Design Advisory Team

Operations & Maintenance

Agencies Having Jurisdiction

Market Conditions



Visioning

Vision and Identity

Learning Environments

Outdoor and Natural Spaces

Community and Shared Use

Wellbeing and Safety

Sustainability and Stewardship

Logistics and Practicalities



MOVEMENT

- Indoor playgrounds with slides, fake grass, and play materials (hoola hoops, mats, etc.)
- Indoor jungle gym
- PE room with high ceilings (ropes, aerials, expanded size)
- Separate lunch room (not shared with gym)
- Outdoor play area with a roof (for rainy days)
- Sensory walk paths
- Race track for Hot Wheels or toy cars
- Zip line, swings (tire swings), monkey bars
- Padded slide landings
- Space for water balloon activities and cool projects
- School that's easier to navigate (less maze-like)

PLAY

- Castle-themed playground
- Large playgrounds with varied equipment
- More game areas, monkey bars, swings
- Bridges connecting parts of school

LEARNING

- Bigger classrooms
- Flexible classroom/learning spaces (big rooms for whole-grade lessons)
- Calm-down corners
- Multiple small group/hallway work areas
- Flexible seating options (cozy areas, scoop/rocking chairs, fuzzy/gaming chairs)
- Cubbies and lockers for better storage
- Whiteboards/chalkboards at lower heights and accessible locations
- TVs, chalkboards, and various wall writing surfaces
- Teacher-controlled climate systems
- Comfy reading chairs (rocking, scoop, gaming-style)
- Indoor/outdoor access spaces
- Better speakers/sound system
- Improved computers for student use

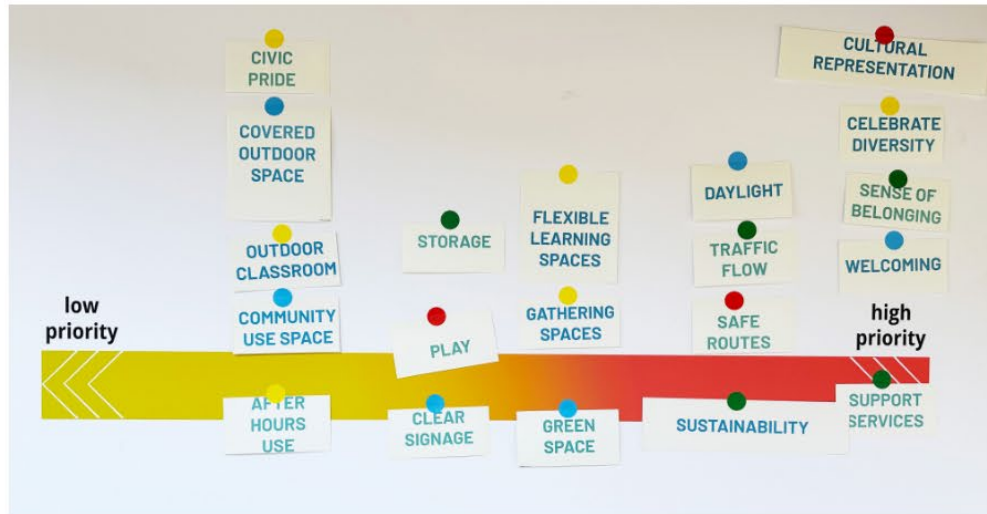
MY DREAM SCHOOL

FUN

- Art room with extensive supplies (paint, brushes, etc.)
- Science, math, and reading rooms
- Fun room for earned rewards (SOAR slips store)
- Room for celebrations and birthdays
- Garden area for planting flowers and vegetables
- Giant chess board
- Aquarium by nurse's office / school pond

REST

- Big library with wood features
- Quiet reading playrooms
- Rocking and comfy chairs for reading



Create a Welcoming and Inclusive School Community

Create an environment that reflects and respects the diversity of its students, families, and staff. Prioritize inclusive design features that ensure accessibility, cultural responsiveness, and a sense of ownership and pride for all who enter the school.

Prioritize Safety and Holistic Wellness

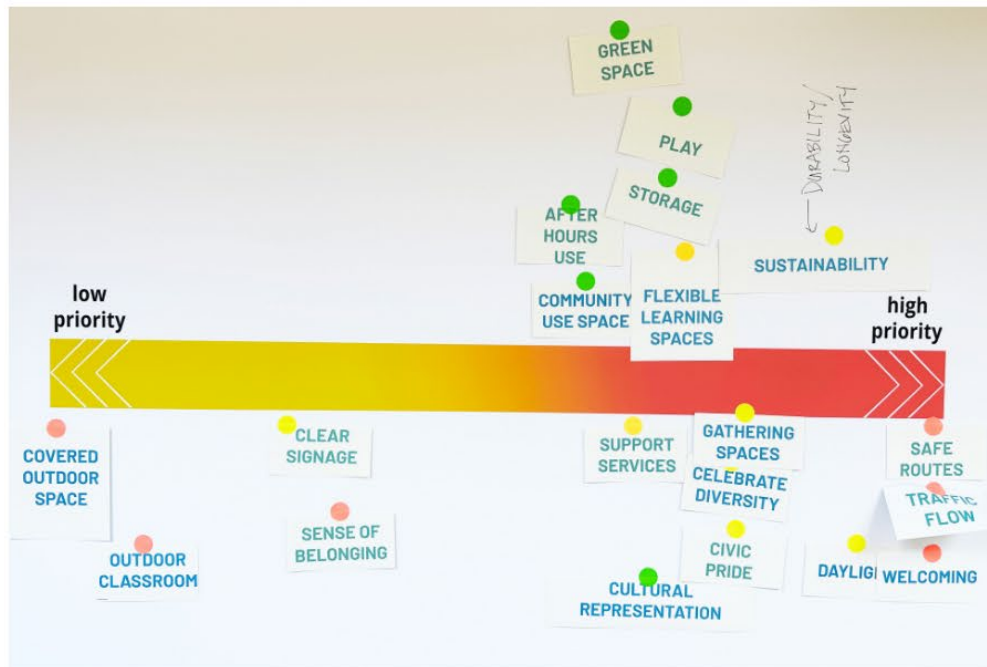
Ensure that every space supports students' physical and emotional well-being. Incorporate secure access points, daylighting, natural ventilation, calming environments, and design strategies that promote movement, nutrition, and mental health.

Design for Environmental Stewardship

Integrate sustainable materials, energy-efficient systems, and outdoor learning environments that connect students to nature. Create spaces that are resilient, enduring and designed for longevity and durability.

Support Community Use and Long-Term Flexibility

Design adaptable spaces that serve both school functions and broader community needs—before, during, and after school hours. Incorporate flexible, modular spaces and future-ready infrastructure that can adapt over time and ensure the building is functional and relevant for many years to come.



Activity

Surfacing insightful
judgements shared
preferences and
aversions

blink

By the author of THE TIPPING POINT



The Power of Thinking
Without Thinking

Malcolm Gladwell

UNABRIDGED
READ BY THE AUTHOR

Next Steps

Workshop 01 LISTEN (visioning, goal development)

April 29th (4:00 - 5:30pm)

Workshop 02 INSPIRE (Tours, adjacency workshop, site exploration)

May 6th (7:30am - 2pm)

Workshop 03 LEARN (Diagram options, site development)

May 19th (4:00 - 5:30pm)

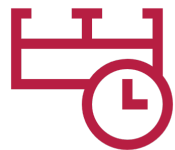
Workshop 04 DISCOVER (specialty space exploration, preferred site)

June 2nd (4:00 - 5:30pm)

Update From Construction Management Team



Current Progress and
Upcoming Milestones



Overview of
Construction Timeline



Budget and Resource
Allocation



Key Considerations
and Challenges

Budget and Resource Allocation



Cheney School District

	Original Budget	Current Budget	Current Commitment	Charged to Date	% Budget Charged	Forecast at Completion	Projected Budget Balance
Access Control - SNO/CMS/W	\$35,000	\$35,000	\$0	\$0	0.00%		\$35,000
Boiler/Chiller/Switchgear - SA	\$630,000	\$630,000	\$311,531	\$54,880	8.71%	\$630,000	\$0
Bus Loops - WES & SAL	\$2,100,000	\$2,100,000	\$226,600	\$121,183	5.77%	\$2,100,000	\$0
Chillers - WES & BES	\$425,000	\$425,000	\$285,632	\$0	0.00%	\$425,000	\$0
CHS Stadium & Lockers	\$2,220,000	\$2,220,000	\$1,300,917	\$61,083	2.75%	\$2,220,000	\$0
Controllers & Cabling - ChS/B	\$1,500,000	\$1,500,000	\$0	\$0	0.00%		\$1,500,000
Craig Rd Elementary	\$47,500,000	\$47,500,000	\$1,042,122	\$74,234	0.16%		\$47,500,000
Kitchen Expansion - WES & S	\$1,500,000	\$1,500,000	\$115,450	\$13,023	0.87%		\$1,500,000
Laminated Glass/Vestibules -	\$225,000	\$225,000	\$0	\$0	0.00%		\$225,000
LED Lighting - CHS & 3Eleme	\$2,400,000	\$2,400,000	\$0	\$0	0.00%		\$2,400,000
OLD to NEW Refresh - CHS/W	\$800,000	\$800,000	\$249,980	\$13,023	1.63%		\$800,000
Water Heaters/Softeners - DW	\$350,000	\$350,000	\$0	\$0	0.00%		\$350,000
Total	\$59,685,000	\$59,685,000	\$3,532,231	\$337,426	0.57%	\$5,375,000	\$54,310,000
2025 Land Purchase	\$10,500,000	\$10,500,000	\$0	\$0	0.00%		\$10,500,000
Bond Issuance Costs	\$0	\$0	\$0	\$0	0.00%		\$0
Program Reserve	\$1,815,000	\$1,815,000	\$0	\$0	0.00%		\$1,815,000
Total	\$12,315,000	\$12,315,000	\$0	\$0	0.00%		\$12,315,000
Program Total	\$72,000,000	\$72,000,000	\$3,532,231	\$337,426	0.47%	\$5,375,000	\$66,625,000

Budget and Resource Allocation



The number one priority is to build and upgrade all items budgeted on the previous slide, as those are what were approved by the voters when this bond passed in November of 2024.

If there are funds left over in contingency at end of the bond program - *a few potential projects are:*

New Stadium Lighting at Cheney High School.....\$260,000 EST* *based on 2025 pricing*

New RTU at Salnave Elementary School.....\$110,000 EST* *based on 2025 pricing*

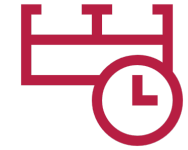
Additional Parking at Windsor ES.....TBD

Windsor Window Shade Removal.....TBD

* Costs will increase annually

The District is also pursuing a grant with the Washington State Department of Commerce. The initial application for the Grant was not awarded, but, there is a new round in September that the District will pursue. *If that grant comes through there will be \$632K dedicated to retrofitting all of the remaining LED light fixtures at CHS, which will positively impact the learning environment, reduce energy costs, and maintenance costs*

Overview of Construction Timeline



New Craig Road Elementary School	2025-2027
Windsor and Salnave Bus Loops	Summer 2025
Cheney HS Stadium Upgrades, Plus Varsity Lockers	Summer 2025
Salnave Elementary – Boiler, Pumps, Switchgear	2025-2026
Windsor, Salnave and Betz – Chillers	2025
2N at Snowdon, CMS, and WMS	2025
Laminated Glass at Vestibules District-Wide	2025-2026
CHS, Elementary School Interior LED Lighting	2026-2027
CHS, Betz, Sunset, and Windsor New Controllers and Cabling	2026
New Hot Water Heaters and Water Softeners District-Wide	2026-2027
Expand Kitchens at Windsor and Salnave	2026
Tie Old-to-New District Wide	2025-2027 *(Sunset ES and Windsor ES Summer 2025)

Bid Results, Project Update



Windsor and Salnave Bus Loops

- RedDiamondConstruction was the low bidder for the Bus Loops at Windsor and Salnave
 - Bid came in at \$663,550.00 (inclusive of both Bus Loops)
 - Accepted Salnave ES- Bid Alternate #1 – Re-Pave Upper Parking Lot - \$44,680.00
 - Accepted Windsor ES- Bid Alternate #1 – SE Drive Approach – New Paving \$7,917.00
 - **Total with both alternates and base bid - \$716,147.00.**
 - Engineer's Estimate of Probable Cost for the two (2) Bus Loops was \$976,467.00
- **Budget for the two bus loops is \$2,100,000**
- Work estimated to start on June 19, 2025
- Substantial Completion August 2, 2025

Bid Results, Project Update



Cheney High School Stadium/Lockers

- Copenhagen Construction was the low bidder for the Earthwork
 - **\$391,756.82.00** – Includes site demolition, concrete for bleacher pads and mow-curbs, storm drainage, conduits for future lighting, asphalt ADA pathway
- Northwest Fence was the low bidder for the Fencing
 - **\$90,575.00** – Includes fences and gates around track, new fencing along 8th street parking lot and fencing at the upper soccer field.
- \$1,300,917 has been issued in Purchase Orders for Bleachers, Track Surfacing and Lockers
- Engineer's Opinion of Probable Costs for Remaining Scopes out for Bid
- Budget for the Stadium Upgrades/Lockers is \$2,220,000.00
- Work estimated to start on May 19, 2025
- Substantial Completion August 19, 2025

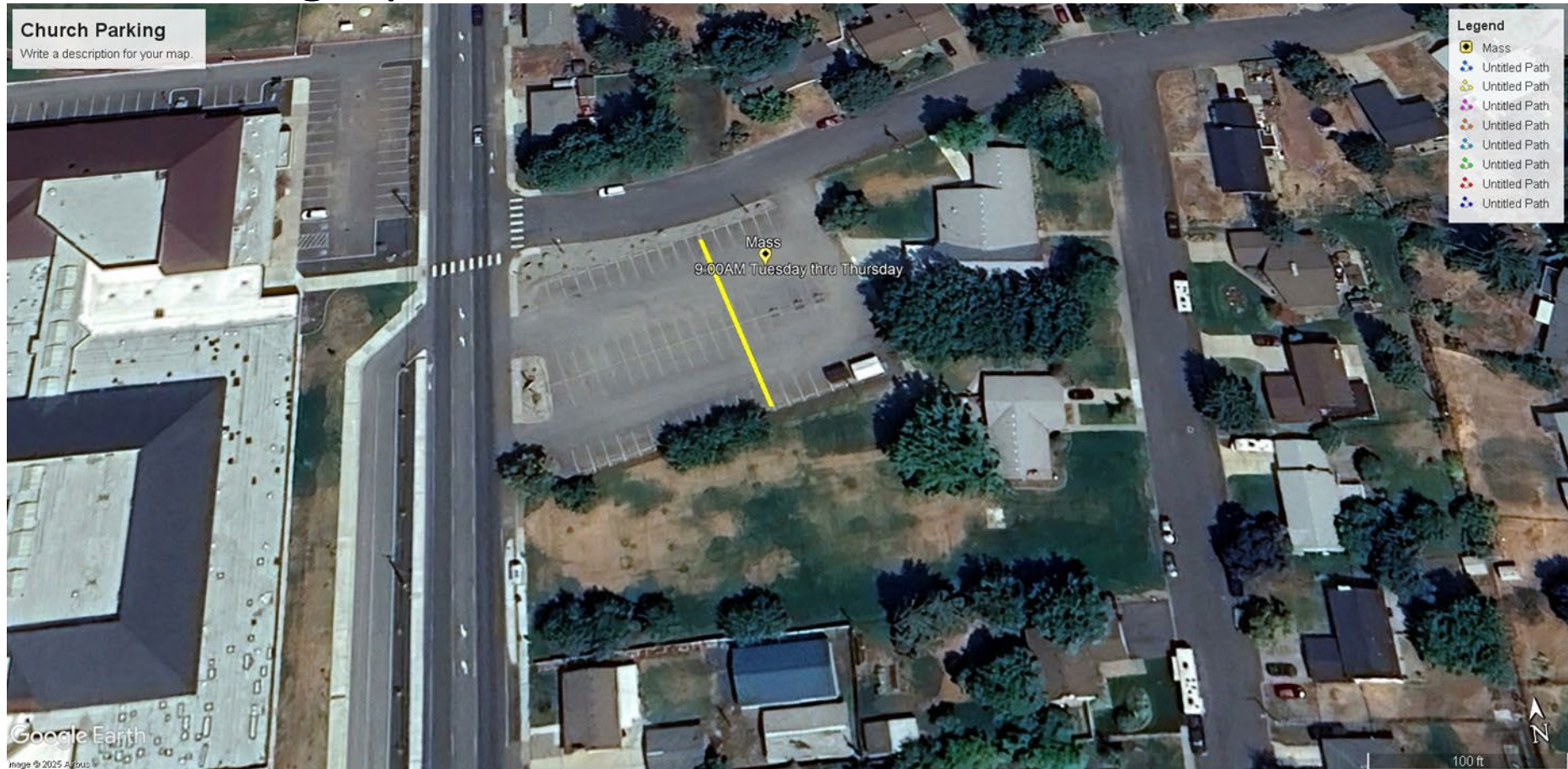
Cheney HS Stadium

North 8th Parking Lot – Contractors
Only Starting May 19th



Cheney HS Stadium

Staff Parking Options



Current Progress And Upcoming Milestones



- **Salnave Elementary School – Boiler, Pumps, Switchgear –**
 - Boiler and pump have been ordered and delivered – installation to follow.
 - Switchgear scope of work is currently being worked on by the Electrical Engineer – looking to order the switchgear by June 1st to keep on schedule. Switchgear currently has a 12-month leadtime. Design costs for the switchgear came in higher than expected due to lack of as-builts, panel boards and breakers being wired incorrectly and/or having too much of a load on them, etc.
- **Windsor, Salnave and Betz Chillers –** Chillers have been ordered. Salnave chiller has been delivered to a local craneyard for temporary storage. Windsor and Betz chillers will be delivered in May. Installation to follow – currently working out the final logistics for delivery/installation.
- **2N at Snowdon, CMS and WMS –** 2N will be performed over summer.

Current Progress And Upcoming Milestones

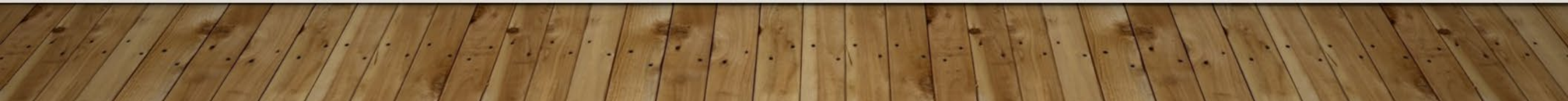


- **Laminated Glass at Vestibules District -Wide** – Measured all vestibules, worked up budgetary pricing for 3M and Safe Haven Project will be out to bid shortly.
- **LED Lighting** – Currently working through product selection and logistics. This project will most likely happen in 2026-2027.
- **CHS, Betz, Sunset, and Windsor New Controllers and Cabling** - Currently working through product selection and logistics. This project will most likely happen in 2026-2027.
- **New Hot Water Heaters and Water Softeners – District -Wide** - Currently working through product selection and logistics. This project will most likely happen in 2026-2027.
- **Expand Kitchens at Windsor and Salnave** – Request for Qualifications has been issued to local Architects. Interviews will take place on May 23rd for shortlisted teams.

Current Progress And Upcoming Milestones



- **Tie Old-to-New – Sunset Elementary School** - Old-to-new upgrades will take place this summer
- **Tie Old-to-New – Windsor Elementary School** – Received competitive pricing for the old-to-new work at Windsor this school over this summer (2025) to replace carpet and paint. This project will now take place this summer!
- **Tie Old-to-New – Betz Elementary School** – This work is estimated to take place over Summer of 2026
- **Tie Old-to-New – Cheney High School** – This work is estimated to take place over Summer of 2027.



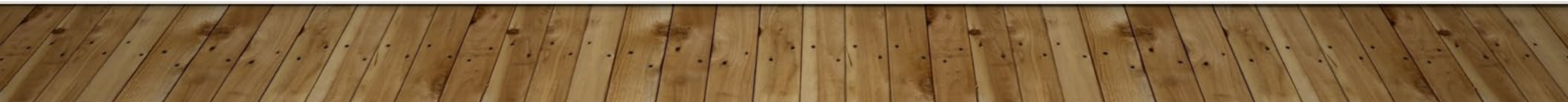
Review Frequently Asked Questions

[November 2024 Bond Information - Cheney School District](#)

Frequently Asked Questions

General	Budget & Funding	Project Planning
New School & Redistricting	Land & Property	Traffic & Infrastructure
Staff Input		

- + | What is The Difference Between a Bond and Levy?
- + | How Were The Bond Projects Selected?
- + | Are Tax Exemptions Available?
- + | How Are Bonds and Levies Approved?
- + | What Are The Current Bond and Levy Rates for Cheney Public Schools?



Conclusion & Next Steps



Review key takeaways
from today's meeting



Next meeting date and
focus areas



Questions or final
thoughts



Thank you for your
time and commitment!