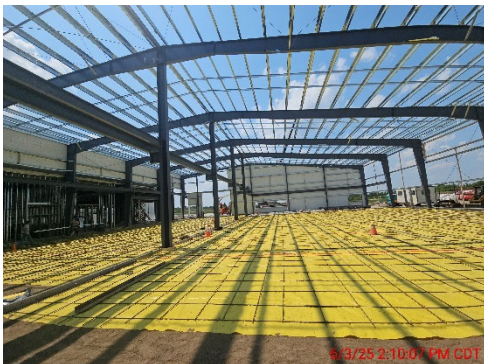


Facilities Update

Construction Progress

Career Academy – Silver Ranch

- Pouring of indoor concrete continues.
- Framing out of interior walls in progress.
- Hanging wall sheathing has started.
- Mechanical and electrical rough in work continues.
- Installation of exterior metal walls and roofing has begun.
- Exterior sewer and water line installation completed.
- Pouring parking lots and curbs.
- Grading around building.



**BISMARCK PUBLIC SCHOOLS****Building Fund****2024-25 Revenues and Expenditures
May 31, 2025**

Beginning Fund Balance - July 1, 2024		\$	(10,849,575)
<u>Revenue For FY-25:</u>			
Property Tax Receipts	\$	6,184,036	
Special Assessments		619,767	
Fundraising		209,780	
Grants		3,330,709	
Interest Income/Misc.		12,000	
Total Revenue	\$	10,356,291	<u>10,356,291</u>
Total Funds Available			\$ (493,284)
<u>Expenditures For FY-25:</u>			
Bond Payment	\$	1,945,076	
Hughes Career Academy		222,783	
Silver Ranch Career Academy		4,143,951	
Lincoln Addition		468,322	
Hughes Field Lights		293,929	
Roof Projects		682,427	
Life Ed @ CHS		158,752	
Misc Projects		316,658	
Special Assessments		641,979	
Total Expenditures	\$	8,873,877	<u>8,873,877</u>
Fund Balance as of	May 31, 2025		\$ (9,367,161)

Special Assessments

Beginning Balance - July 1, 2024		\$	89,564
<u>Revenue For FY-25:</u>			
Property Tax Receipts	\$	619,767	
Total Revenue	\$	619,767	<u>\$ 619,767</u>
Total Funds Available			\$ 709,330
<u>Expenditures For FY-25:</u>			
Minimum Payment	\$	417,226	
Payment towards Balance	\$	224,753	
Total Expenditures	\$	641,979	<u>\$ 641,979</u>
Balance as of	May 31, 2025		\$ 67,351
Current Balance	\$	1,810,079	

Project Detail Expenditures

May 31, 2025

Hughes Career Academy

	Current FY	Project Total
Construction Expenses	\$ 170,021	\$ 1,571,088
Fees	3,590	329,921
FFE & Misc	49,173	120,971
Technology	-	(2,044)
Total	\$ 222,783	\$ 2,019,935

Silver Ranch Career Academy

	Current FY	Project Total
Construction Expenses	\$ 3,679,489	\$ 3,679,489
Fees	80,492	520,508
FFE & Misc	383,969	394,244
Technology	-	-
Total	\$ 4,143,951	\$ 4,594,242

Lincoln Addition (\$8,139,024) - FINISHED

	Current FY	Project Total
Construction Expenses	\$ 389,102	\$ 7,456,956
Fees	(6,608)	443,236
FFE & Misc	74,973	179,362
Technology	10,855	58,546
Total	\$ 468,322	\$ 8,138,100