

Public Schools of the Tarrytowns

District-Wide Energy Project Update

May 20, 2025



[ameresco.com](https://www.ameresco.com)

© 2025 Ameresco, Inc. All rights reserved.

Public Schools of the Tarrytowns – Matrix & Project Info

Public Schools of Tarrytowns Energy Conservation Measures (ECMs)	Lighting System Improvements	Upgrade/recommission Energy Management Systems	Expand EMS - Pneumatic Replacement	Infiltration Reductions	Pipe or Tank Insulation	Solar PV Array	Replace HW Heating Pumps	Roof Replacements
Facility	1	2	3	4	6	7	10	12
Sleepy Hollow High/Middle School	x	x		x	x	x		x
John Paulding School	x	x		x	x			
Tappan Hill School		x	x	x	x	x		
Irving Middle School						x		
Administration Building		x						

Lighting Improvements



New LED high bay with control will greatly improve aesthetics and performance, while saving substantial energy



Retrofit kits with integrated controls will provide aesthetic upgrades as well as dimming fixtures to adjust for daylighting and occupancy

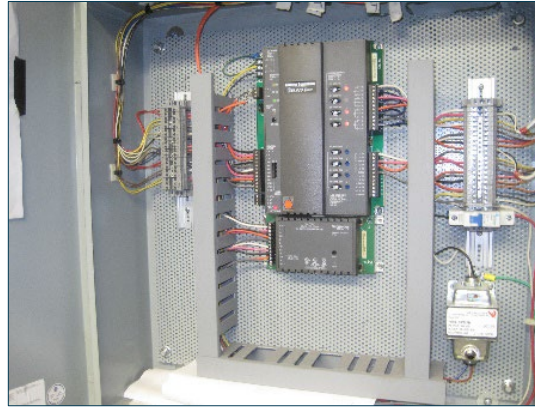
Lighting Upgrade Highlights

- Upgrade all recessed troffers to LED troffer kits with integrated controls
- New Units react to All Light Sources (Daylight and other fixtures) to automatically calibrate and adapt light levels
- LED direct-wire tubes to replace fluorescent lamps – applicable to existing “Wrap” style fixtures with T8 fluorescent lamps

Energy Management Systems



Ameresco proposes to upgrade the existing Andover Continuum Energy Management System infrastructure to the Schneider Electric EcoStruxure™ operating platform



Pneumatic controls will be replaced with electronic at Paulding and Tappan Hill Schools



EMS Highlights

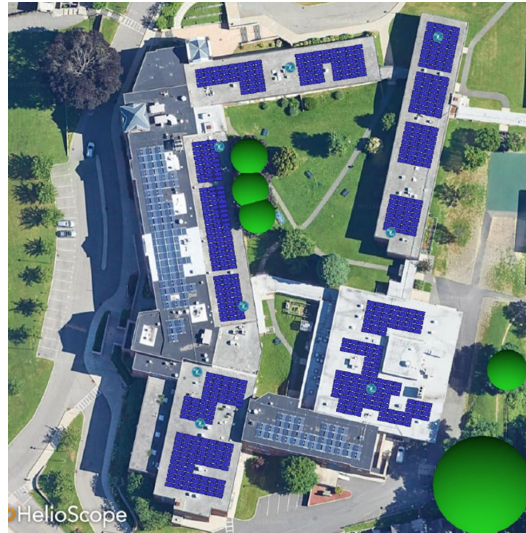
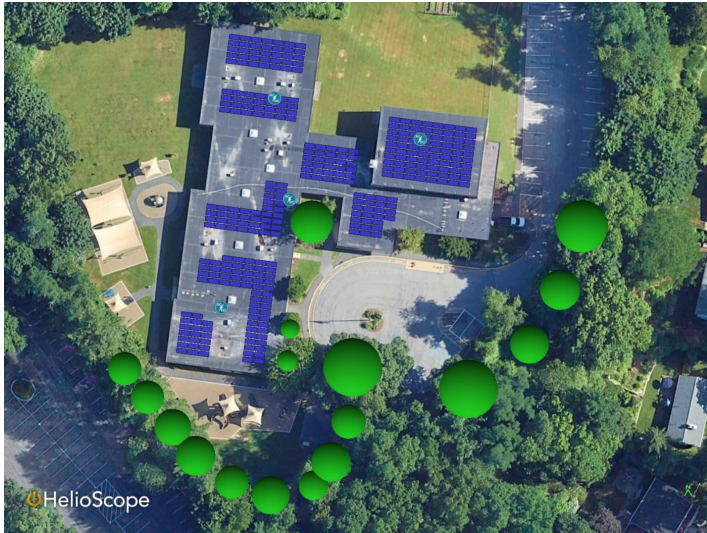
Upgrade and integrate existing Andover Continuum to Schneider EcoStruxure

- Install New Building Level Controller in each school
- Individual controllers that are not compatible will be replaced.
- Expand and Improve Scheduling Capabilities. Expand Trending and Logging Capabilities.
- Perform a point-to-point inspection of all existing control points and test their functionality/performance
- No Pneumatics remain
- **District's staff will have access and complete control of programming and set points.**

Install BERT Plug Load Controllers on WACs

- Integration to EMS

ECM 7: Solar PV



Highlights

Sustainability and Renewable Energy

- 302.33 kWdc at High School / Middle School - Roof
- 153.4 kWdc at Tappan Hill School – Roof
- 256.06 kWdc at Washington Irving – Carport
- Systems will produce over 903,540 kWh annually
- \$145,807 Annual Bill-Credit
- Remote Net Crediting to maximize credits via NY's ValueStack

ECM 12: Roof Replacements



Highlights

- **Partial Replacement at the High School / Middle School.**
Replacement “down to the decking”

Thank You



Matthew Furdyna
Senior Account Executive
508-598-3045
mfurdyna@ameresco.com

50 Front Street
Newburgh, NY 12550