

Public School Enrollments
for
Colts Neck Township Schools
70 Conover Road, Colts Neck, NJ 07722



Prepared by



Sundance Associates

117 Greenvale Court
Cherry Hill, NJ 08034
Tel 856-755-0174
Fax 856-755-0176

March 18, 2022

Table of Contents

Pages

EXECUTIVE SUMMARY

Colts Neck Township

Brief History	1
Population and County-State Comparison	3
Population by Race	4
Household Income	5
Land Use	6
Population by Age Group	7
Age & Gender Pyramid	8
Births by Year	9
Residential Housing Sales	10
Residential Permitting History and Projection	11
Court Ordered Housing Summary	12
Demographic Multipliers for School Age Children	13
Student Yield from New Housing	14

Colts Neck Township Schools

Brief History, and School Locations	15
Public & Private Enrollment Comparison	16
Private School Enrollments 2015-21	17
Enrollment History: 2000-2020	18

Enrollment Projections

Cohort Survival Methodology	19
Adjustments to the Standard Method	20
Grade Level Survival Ratios	21
Notes on Reading the Charts	22
District Wide Enrollments by Year	23
Primary Elementary School Gr PK-2	24
Conover Rd. Elem. Gr 3-5 Enrollments	25
Middle School Gr 6-8 Enrollments	26
Compare Enrollments by Grade Level Organization	27

APPENDIX

- A:** NJDOE Cohort Survival Worksheets
- B:** School Capacities Report



Population in Colts Neck is recently decreasing. As of year 2000 the population was 12,331 persons and as the 2010 US Census, the Township's population had decreased to 10,142. The 2020 population is 9,957 persons reflecting a recent additional decrease of 1.8%.

Population by Age Group from 2000 to 2010 and 2010 to 2019 *est.*, show **Pre School Age** decreased by an average of 18 per year between 2000 and 2010, but increased by an average of 8 per year between 2010 and 2020. **School Age Group** which had been increasing at 6 per year, decreased 429 persons from 2010 to the 2020 or 43 per year. **Childbearing Age** decreased by an average of 42 per year between 2000 and 2010, but increased by an average of 26 per year between 2010 and the 2020.

Live Births in the district in the 6-year period from 2005 to 2011, have been trending downward before an increase and a period of volatility to a recent high of 86 in year 2014. The Average of Births for the last 6 years is used in making the projection. That Average of 67 Births is used for "Births 5 years earlier" in the 5th year of the projection and for the 6th-10th year Extended Projection.

Residential permitting for new housing peaked at 58 in 2000 and has severely declined to a recent 6-year average of 9 units per year.

Sales of Existing Housing with a recent 6-year Annual Average of 274 units per year is far more significant than the recent 6-year average of New Housing at 9 units per year.

COAH Housing is ordered by the Courts with a need for 111 units of Affordable housing resulting in projects with a total of 547 units of which 437 will be Market Rate. Final Site Plans are approved for a 360 unit project, and sites are identified for a 120-unit and a 67 unit project.

A **Schedule of Occupancy** is approximated by the Demographic Consultant to occur within a single 4-year projection period from 2023 to 2026. The mix of Bedroom counts is known for Colts Neck Manor and is estimated for the other two projects.

Students from the New Housing are estimated using Rutgers University Multipliers. The 547 units are projected to yield 82 Kindergarten to Grade 12 students of which 57 are Kindergarten to Grade 8 that impact the Colts Neck Public School District.

Private School Enrollments, based on Courtesy Bus Counts was decreasing since 2016 by 54 students during a period of increasing public school enrollments of 64 students. However Courtesy Busing increased to 217 in Fall 2021 nearly erasing the decreases since year 2016.

Historical Enrollments in the District were generally decreasing since 2005 by 62 students per year until 2016. Since the 2016 turnaround enrollments have been increasing by 13 students per year.

The Methodology used in projecting enrollments is the recommended method of the New Jersey Department of Education (NJDOE) and is known as “Cohort Survival”. Studies indicate this methodology has an accuracy of +1% per year.

Grade to Grade Cohort Survival Ratios are generally volatile, particularly around 2019 and 2020 probably in response to Pandemic issues.

District-wide Enrollments that have been decreasing are projected to be increasing beyond levels experienced in the last 6 years. Six years of historical enrollments increased 64 students or 6.9%. Five year future enrollments are projected to increase 185 students or 18.4% to 1,182 students. Six to ten year Extended projections are stable around an average of 1,169 students.

Conover Road Primary Enrollments, for Grades PK-2 only, increased by 64 students or 21.2% to 363 in the Actual Period. In the projection period, 18 students are added to Grades PK-2 from new housing. In the projection period, enrollments are volatile peaking at 376 students in year 2025 exceeding the Capacity of 347 by 29 students.

Conover Road Elementary Enrollments, for Grades 3 through 5, increased 29 students to a total of 310 students in the historical period. In the projection period, 18 students are added to Grades 3-8 from new housing. In the projection period, enrollments will increase to 401 students in 2026, exceeding the 372 student capacity by 29 students.

Middle School Enrollments, for Grades 6 through 8, were decreasing 28 students in the historical period from 352 to 324 students. In the projection period, 19 students are added to Grades 6-8 from new housing. In the projection period, enrollments will increase to 431 students in 2026, under the 440 student capacity.

Township Profile

Brief History

Colts Neck Township is a township in Monmouth County, New Jersey.. As of the 2010 United States Census, the population was 10,142, reflecting a decline of 185 persons to 9,957 at the 2020 U S Census.

What is now Colts Neck Township was established by an act of the New Jersey Legislature as Atlantic Township on February 18, 1847, from portions of Freehold Township, Middletown Township and Shrewsbury Township. The name was changed to "Colts Neck Township" as of November 6, 1962, based on the results of a referendum held that day.

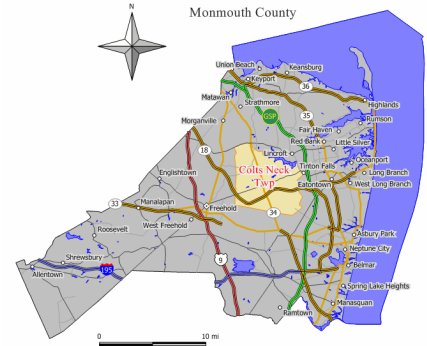
The township has been ranked as one of the state's highest-income communities. Based on data from the American Community Survey for 2013–2017, Colts Neck residents had a median household income of \$167,480, ranked fifth in the state among municipalities with more than 10,000 residents, more than double the statewide median of \$76,475.

Colts Neck is a prominent bedroom community in Central New Jersey, located within the New York metropolitan area. Many people choose to move to Colts Neck due to its open space and proximity to the Jersey Shore, while still being within commuting distance of New York City and, to a lesser extent, Philadelphia. The township's strict zoning ordinances have long kept out urban development and chain stores, allowing for locally owned businesses, while still being close to malls, movie theaters, and other amenities in neighboring communities.

The township has a Farmland Preservation Committee which to date has preserved nearly 1,000 acres of land, providing one way in which Colts Neck has been able to prevent large-scale development. The township has strict zoning regulations, and because there is no public water or sewage service, most homes must be built on lots covering a minimum of 2, 5 and 10 acres.

Originally a farming community, Colts Neck has long been known for its large number of equestrian farms. From the 1950s into the 1970s many of Colts Neck's heavily wooded areas were developed with large colonial and ranch-style houses on acre-sized lots. In the 1980s and continuing into the 2000s much of the town's farm land has been replaced with large houses, mansions and sprawling estates, although a large number of equestrian farms remain. During this time period increasing home prices in northern New Jersey and New York City resulted in large numbers of people moving to central New Jersey, causing real estate prices in Colts Neck and surrounding towns to rise considerably over the course of the two decades.

According to the United States Census Bureau, the township had a total area of 31.79 square miles (82.34 km²), including 30.72 square miles (79.55 km²) of land and 1.08 square miles (2.79 km²) of water (3.38%).



Colts Neck Township within Monmouth County



Monmouth County within New Jersey

Township Profile

Brief History (con't)

Unincorporated communities, localities and place names located partially or completely within the township include Bucks Mill, Cooks Mills, Hominy Hill, Lippincott, Montrose, Phalanx, Scobeyville, Swimming River and Vanderburg.

As of May 2010, the township had a total of 132.59 miles (213.38 km) of roadways, of which 103.86 miles (167.15 km) were maintained by the municipality, 15.52 miles (24.98 km) by Monmouth County and 13.21 miles (21.26 km) by the New Jersey Department of Transportation.

Two major state roads pass through the township: Route 18 (the freeway portion) and Route 34. Major county roads that traverse the township are CR 520 (along the border) and CR 537.

The Garden State Parkway is accessible in neighboring Holmdel Township, Middletown Township, Tinton Falls and Wall Township. Interstate 195 is also outside the township, in neighboring Wall and Howell Township.

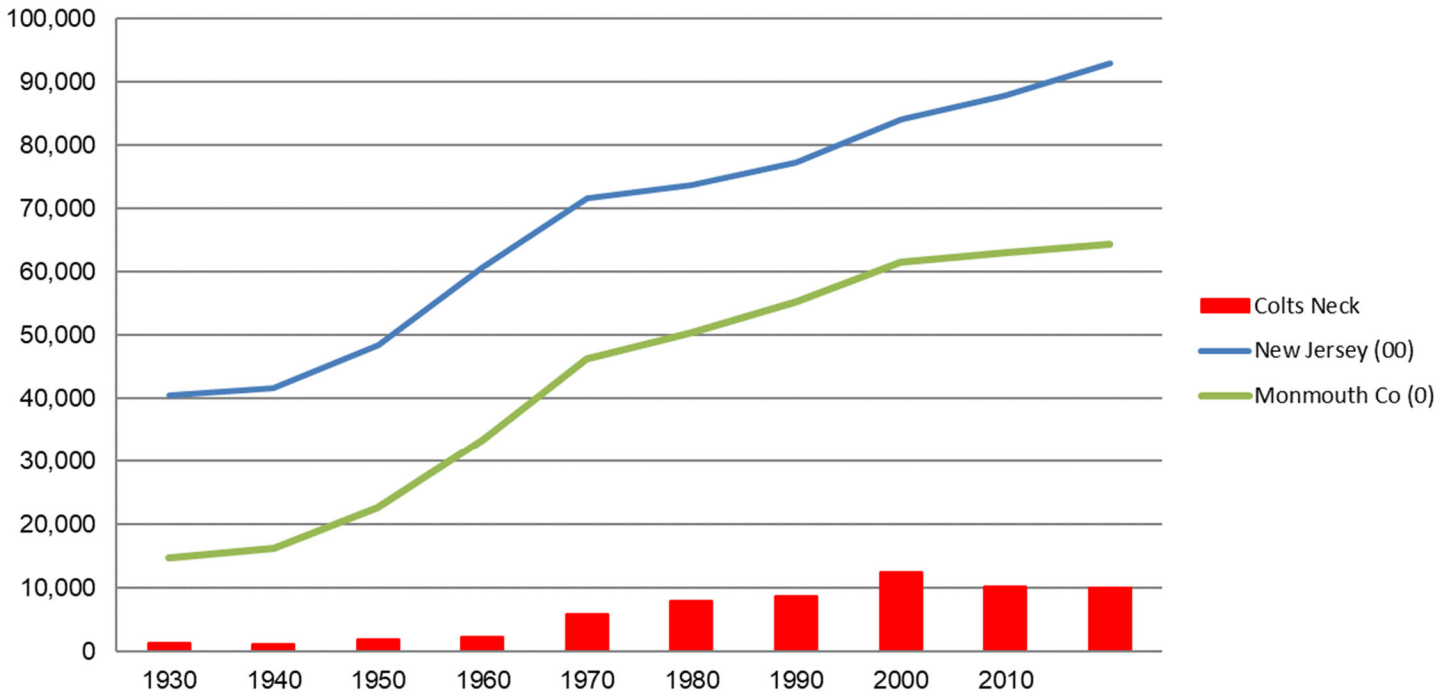
NJ Transit provides local bus service between Freehold Township and Sea Bright on the 838 route.

Ferry service is available through the SeaStreak service in Highlands, a trip that involves about a 25-30 minute drive from Colts Neck Township (depending on the section of town) to reach the departing terminal. SeaStreak offers ferry service to New York City with trips to Pier 11 (on the East River at Wall Street) and East 35th Street in Manhattan. The ferry service also offers seasonal travel, such as to the public beaches on Sandy Hook, baseball games at Yankee Stadium and Citi Field, trips to Broadway matinees, Martha's Vineyard in Massachusetts, college football games at West Point, fall foliage in the Hudson Valley, and to the Macy's Thanksgiving Day Parade, among other excursions.



Township Profile
Population and Growth
 Comparative Local, County, State

Local-County-State Comparative Population



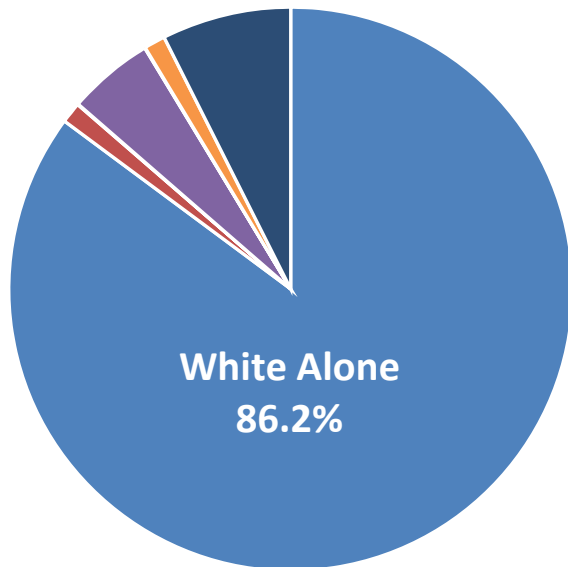
Population in Colts Neck increased significantly between 1960 and 2000 during a period of increasing residential development. The peak population in 2000 of 12,331 decreased by 2,189 persons by 2010 to 10,142 and by an additional 185 by year 2020 to 9,957 persons

	1930	1940	1950	1960	1970	1980	1990	2000	2010	2020
Colts Neck	1,241	1,177	1,814	2,177	5,819	7,888	8,559	12,331	10,142	9,957
Monmouth Co	147,209	161,238	225,327	334,401	461,849	503,173	553,124	615,301	630,380	643,615
New Jersey	4,041,334	4,160,165	4,835,329	6,066,782	7,168,164	7,364,823	7,730,188	8,414,350	8,791,894	9,288,994



Township Profile
Population by Race

White alone	8,649	86.2%
Black or African American alone	122	1.2%
American Indian and Alaska Native alone	4	0.0%
Asian alone	500	5.0%
Native Hawaiian and Other Pacific Islander a	4	0.0%
Other Race alone	123	1.2%
Two or more races	754	7.5%
	10,034	



The racial makeup was 86.2% (8,649) White, 1.2% (122) Black or African American, 0.0% (4) Native American, 5.0% (500) Asian, 0.0% (4) Pacific Islander, with the remainder from other races.

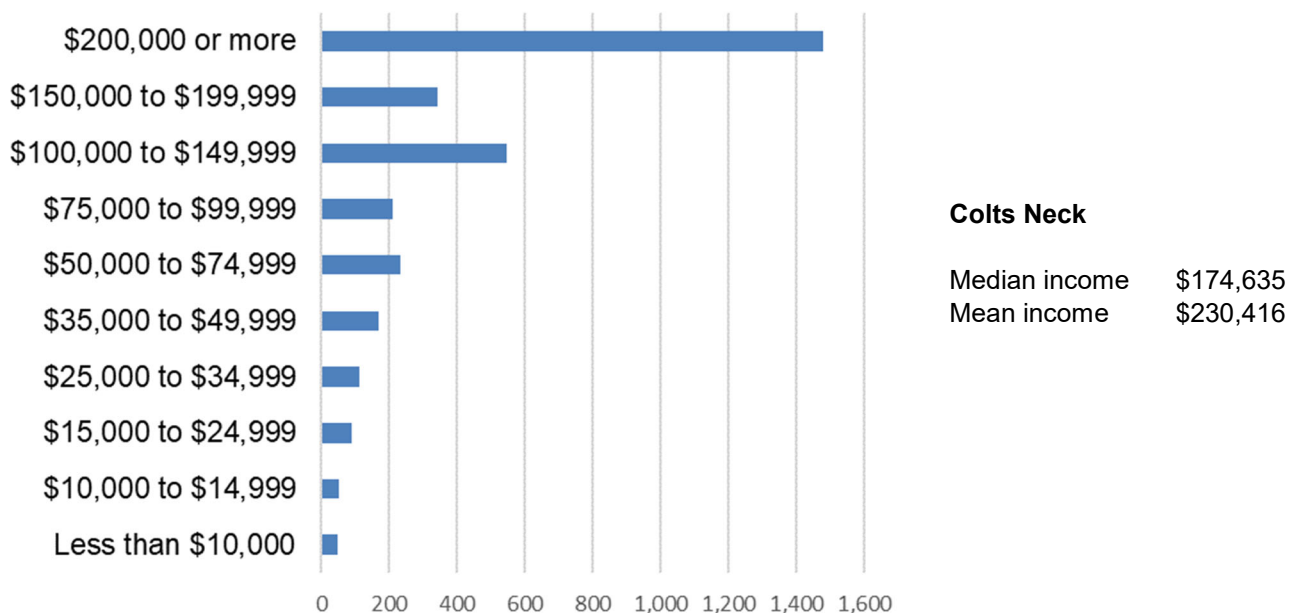
Township Profile
Household Income

	Colts Neck		Monmouth County		New Jersey	
Under \$50K	14.4%	473	26.1%	61,429	31.5%	1,015,657
\$50K - \$100K	13.5%	443	24.1%	56,722	26.7%	864,086
\$100K - \$200K	27.0%	886	30.8%	72,491	27.8%	898,854
Over \$200K	45.1%	1,480	19.0%	44,719	14.0%	453,277
Total		3,282		235,362		3,231,874

Household Income Percent
 Local County State



Household Income; Colts Neck



Township Profile

Land Use

Single Family Housing and Multi-Family Housing accounted for nearly 27% of Land Use in 2015.

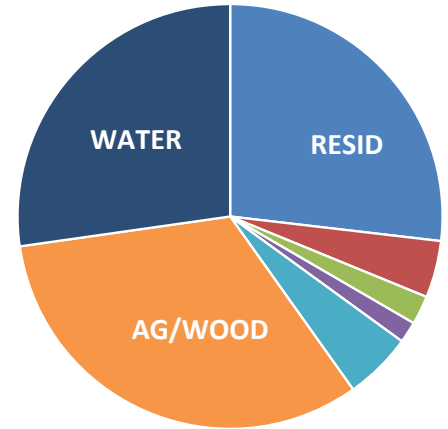
Vacant, Wooded and Agricultural uses combined account for 32.6%, while Water and Wetlands are 27.3%.

Residential land use grew by 1,561 acres between 1995 and 2015.

Undeveloped land uses decreased by 2,149 acres between 1995 and 2015.

Summary

Residential	26.9%
Comm-Indust-Mil	4.3%
Trans-Util	2.2%
Other Urban	1.6%
Recreation-Ath	5.2%
Ag/Wood/Barren	32.6%
Water/Wetland	27.3%
	<hr/> 100.0%



Land Use 2015

Land Use (Acres)	1995	2015	1995-2015 Change	2015 % Tot
Residential	0.0	0.0		
Residential (High Density or Multiple Dwelling)	1.0	7.0		
Residential (Single Unit, Medium Density)	90.3	75.2		
Residential (Single Unit, Low Density)	599.6	342.9		
Residential (Rural, Single Unit)	3,205.6	5,033.3		
Mixed Residential	0.2	0.0		
RESIDENTIAL	3,896.7	5,458.4	1,561.7	26.9%
Commercial and Services	114.9	168.8		
Military	578.5	674.8		
Industrial	11.6	35.6		
Transportation/Communication/Utilities	294.6	447.1		
Other Urban or Built-up Land	641.6	328.6		
Recreational Land	474.5	1,048.8		
OTHER URBAN	2,115.7	2,703.7	588.0	13.3%
Agriculture	4,358.4	2,967.5		
Forest	3,791.3	3,622.1		
Water	577.8	616.3		
Wetlands	5,443.0	4,921.7		
Barren Land	139.6	32.6		
UNDEVELOPED	14,310.1	12,160.2	-2,149.9	59.8%
	<hr/> <hr/> 20,322.5	<hr/> <hr/> 20,322.3		

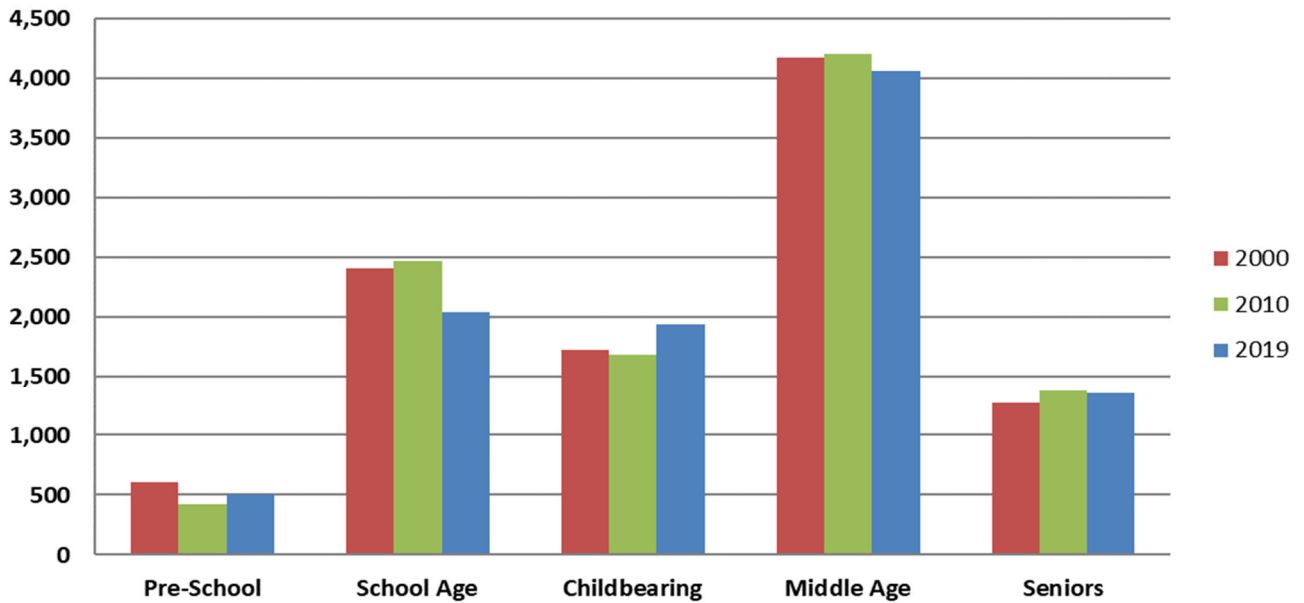


Township Profile

Population by Age Group

Type	Age	2000		2010		2019	Percents	2000	2010	2019
Pre-School	0-4	610	-188	422	82	504	Pre-School	6.00%	4.16%	5.09%
School Age	5-17	2,401	64	2,465	-429	2,036	School Age	23.60%	24.30%	20.58%
Childbearing	18-39	1,719	-42	1,677	260	1,937	Childbearing	16.90%	16.54%	19.58%
Middle Age	40-64	4,171	31	4,202	-139	4,063	Middle Age	41.00%	41.43%	41.06%
Seniors	65 +	1,272	104	1,376	-21	1,355	Seniors	12.50%	13.57%	13.69%
		10,173	-31	10,142	-247	9,895		100%	100%	100%

Population by Age Group: 2000, 2010 & 2019



Pre School Age decreased by 188 between 2000 and 2010, but increased by 82 between 2010 and 2019 estimate.

School Age Group which had been relatively stable, decreased 429 persons from 2020 to the 2019 estimate.

Childbearing Age decreased by 42 between 2000 and 2010, and increased by 260 between 2010 and 2019.

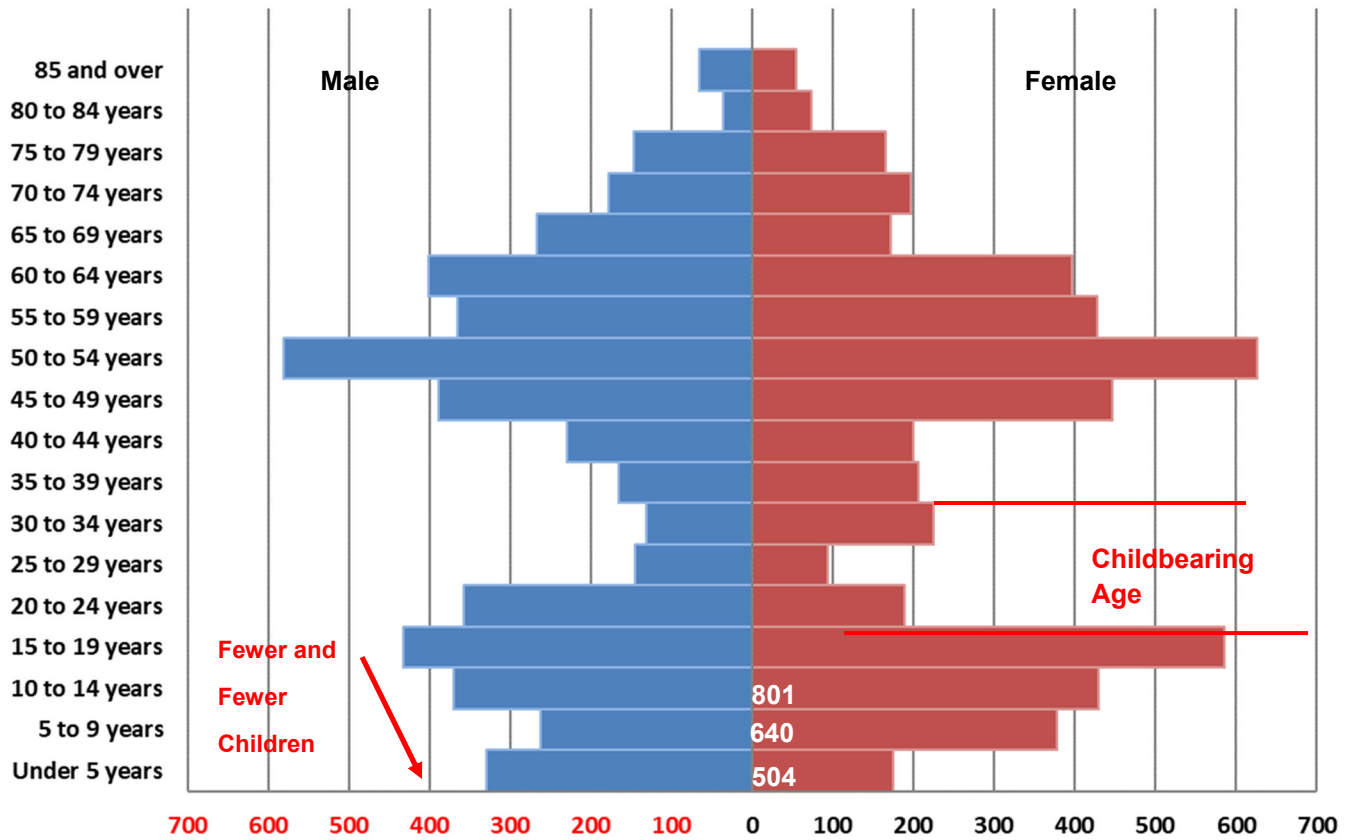
Middle Age increased by 31 between 2000 and 2010, but is estimated to have decreased by 139 between 2010 and 2019.

Seniors, that had increased by 104 between 2000 and 2010, decreased by 21 to 2019.



Township Profile
Age & Gender Pyramid

SD: Age & Gender Pyramid 2019

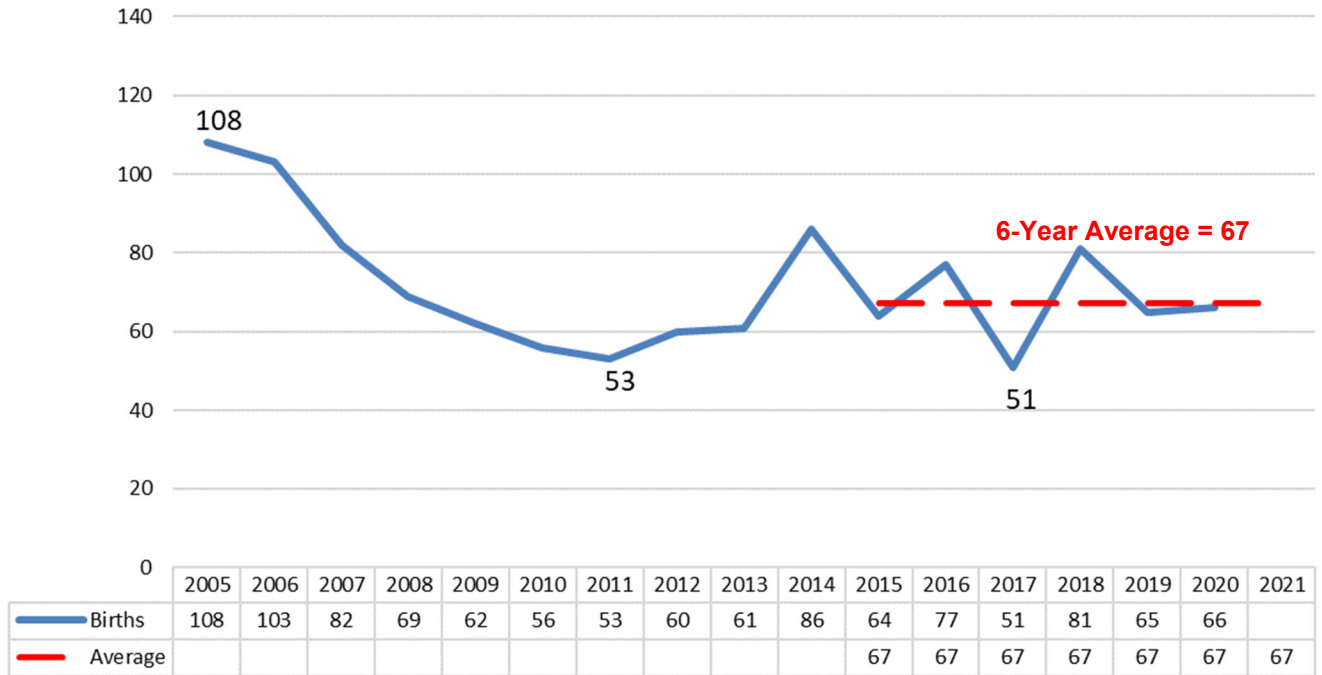


There are fewer children in each 5-year age group at the younger ages.

There are fewer women in the younger Childbearing 5-year groups and the older, larger groups are aging out. This supports the fewer children in the youngest age groups.

Township Profile
Births by Year

Colts Neck Births History

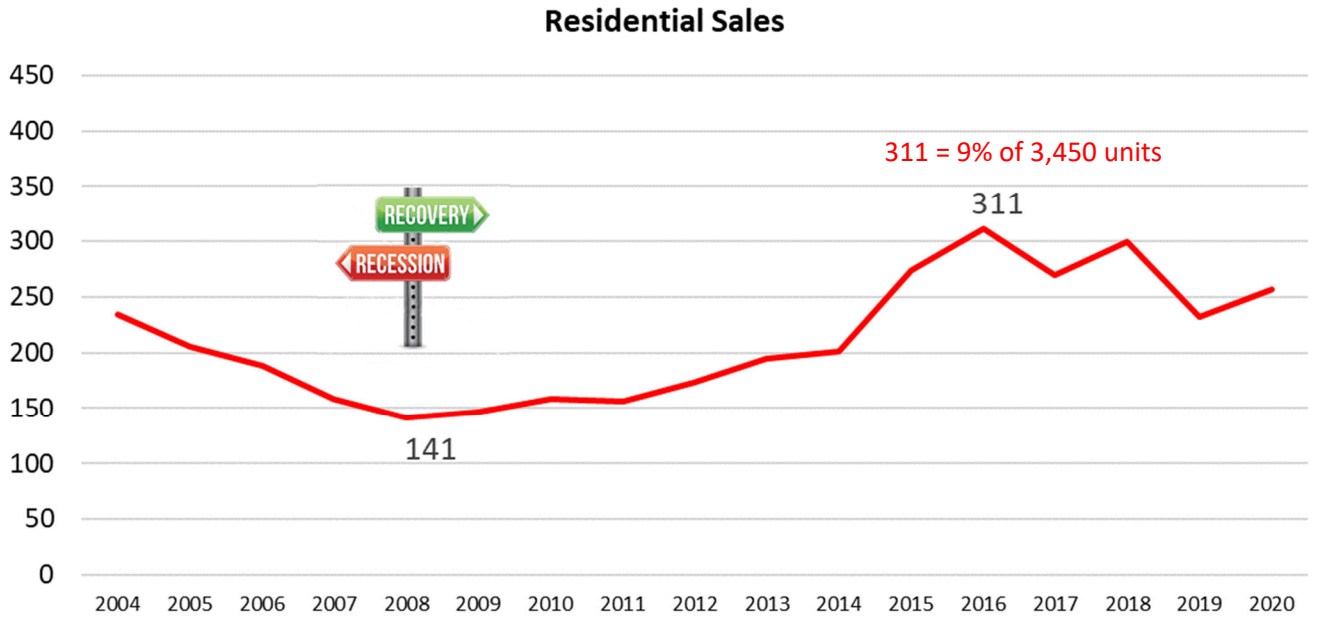


In the period 2005 to 2019, Births peaked at 108 in year 2005 and was followed by significant decreases to a low of 53 in year 2011. Births then increased to 86 in 2014 and entered a period of volatility through 2021.

The Average of Births for the last 6 years of 51 is used in making the projection. That Average of 67 Births is used for "Births 5 years earlier" in the 5th year of the projection and for the 6th-10th year Extended Projection.

Township Profile

Residential Housing Sales, the Recession, and the Pandemic



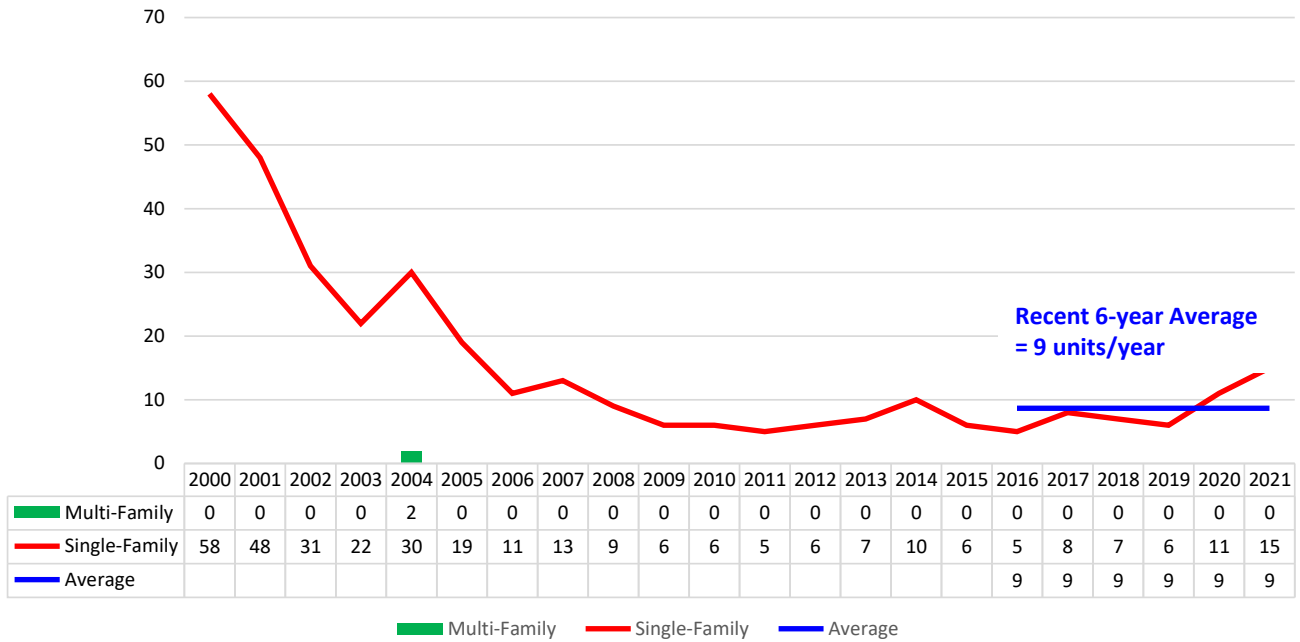
Residential Sales decreased alongside the 2008 Recession to a low of 141 units in year 2008. Sales began to rebound in 2010 and has since returned to pre-recession levels peaking most recently at 311 units in 2016 when pent-up demand was met.

The recent 6-year Average of Residential Sales of 274 units per year is far more significant than the recent level of new housing.

The 6-year average of Permitting or Occupancy of New Housing is at 9 units per year in what is an established community.

Township Profile
Residential Permitting History

Residential Building Permits by Type



The recent 6-year (2016-21) Residential Permitting level averages 9 units per year, all Single Family units, and has been at a similar level since 2006.

Known changes to that level of new housing will come from COAH mandated projects that are all multi-family proposals.

Township Profile

Proposed COAH Housing by Unit Type and Occupancy

Development	Type	Bdrms	Mkt Unit Count	Aff Unit Count	Total Unit Count	Occupancy Schedule					5 Yr Total
						2022	2023	2024	2025	2026	
1 Colts Neck Manor <i>302 Rt 537 Kushner</i>	Apt	1 Bdrm	166	14	180		60	60	60		180
	Apt	2 Bdrm	122	43	165		55	55	55		165
	Apt	3 Bdrm	0	15	15		5	5	5		15
				288	72	360		120	120	120	
2 Site A <i>Rt 34 N South of Rt 537 Toll Brothers</i>	Apt	1 Bdrm	55	5	60			30	30		60
	Apt	2 Bdrm	41	14	55			27	28		55
	Apt	3 Bdrm	0	5	5			3	2		5
				96	24	120			60	60	
3 Site B <i>Stone Hill Rd Terry Sherman</i>	Apt	1 Bdrm	30	3	33				16	17	33
	Apt	2 Bdrm	22	9	31				16	15	31
	Apt	3 Bdrm	0	3	3				2	1	3
				53	15	67				34	33
						0	120	180	214	33	547

The **Colts Neck Manor** project is approved by the local Planning Board as described above for unit mix, however, the Occupancy Schedule is assumed. Emails and telephone calls to the Developer were not returned for confirmation of the schedule.

Site A and **Site B** are accurate in regard to total probable units but they are not Approved plans. The Unit Mix is assumed in accordance with COAH guidelines; and the Occupancy Schedule is assumed to be within 5 years, however they will take longer.

The 3 developments would yield a total of 547 new units.



Township Profile

Housing Multipliers for School Age Children (SAC)

It should be noted that the Student Yields in the previous summary table is for a full Kindergarten to Grade 12 compliment.

Grade K-8 Yield for the Colts Neck School District is **57** students.

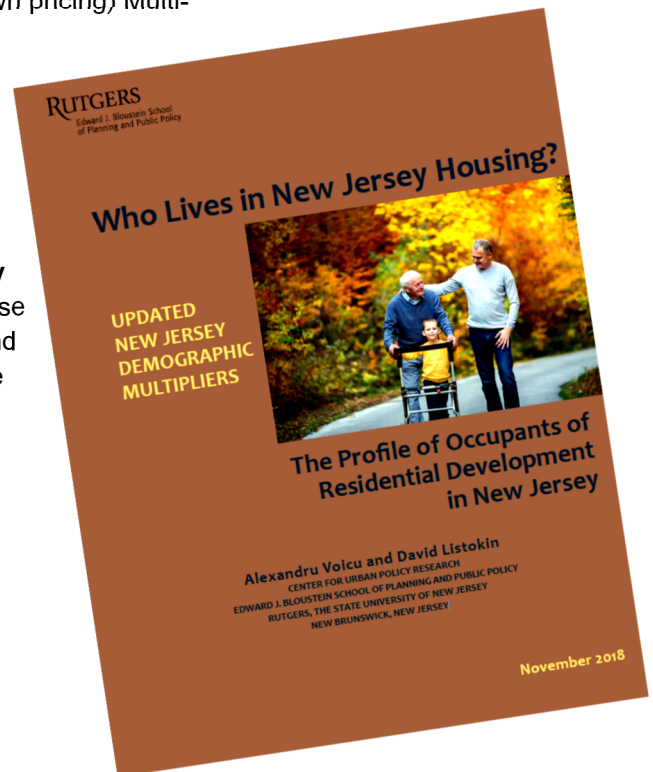
Student yield are generated using Demographic Multipliers from “**Who Lives in New Jersey Housing?**” by Voicu and Listokin (2018) at the Center for Urban Policy Research at Rutgers, the State University of New Jersey and is based on the US Census’ American Community Survey through 2017.

The source tables for the multipliers are included in the Appendix. The **Market Rate** multipliers are for **Public** School Age Children from Multi-family **Rental** Apartments using the All Values (unknown pricing) Multiplier (Table II-A-3) as follows:

Apt	1 Bdrm	0.018
Apt	2 Bdrm	0.130
Apt	3 Bdrm	<u>0.614</u>

The **Affordable Housing** multipliers are from **Low and Moderate Income Households Living in New Jersey Newer Multifamily Rental Housing** (Table 1-13). These multipliers are derived from multiple, special studies and not from the American Community Survey. While these are NOT multipliers for COAH housing, they are an acceptable substitute, as follows’

Apt	1 Bdrm	0.088
Apt	2 Bdrm	0.408
Apt	3 Bdrm	<u>1.087</u>



“A common and unfortunate misconception is that LMI households and occupants of subsidized homes have exceedingly large households with many school children. The admittedly sparse data assembled here says that perspective is an oversimplification. ...the specter of extremely high population densities in the affordable housing sector is unsubstantiated, especially with respect to the 1-bedroom and 2-bedroom units.”

- Who Lives in New Jersey Housing?

Township Profile

Public School Age Children from New Housing

Development	Type	Bdrms	Mkt	Aff	Total Unit Count	Occupancy Schedule					5 Yr Total	
			Mult	Mult		2022	2023	2024	2025	2026		
Colts Neck Manor <i>302 Rt 537</i> <i>Kushner</i>	Apt	1 Bdrm	0.018	0.088	180		1.3	1.4	1.4		4	
	Apt	2 Bdrm	0.130	0.408	165		11.5	10.9	11.0		33	
	Apt	3 Bdrm	0.614	1.087	15		5.4	5.4	5.4		16	
					360		18.2	17.8	17.9		54	
Site A <i>Rt 34 N South of Rt 537</i> <i>Toll Brothers</i>	Apt	1 Bdrm	0.018	0.088	60			0.7	0.8		1	
	Apt	2 Bdrm	0.130	0.408	55			5.6	5.5		11	
	Apt	3 Bdrm	0.614	1.087	5			3.3	2.2		5	
					120			9.5	8.4		18	
Site B <i>Stone Hill Rd</i> <i>Terry Sherman</i>	Apt	1 Bdrm	0.018	0.088	33				0.4	0.4	1	
	Apt	2 Bdrm	0.130	0.408	31				3.5	3.1	7	
	Apt	3 Bdrm	0.614	1.087	3				2.2	1.1	3	
					67				6.0	4.6	11	
					547		0.0	18.2	27.3	32.3	4.6	82

The 547 units of new housing will yield 82 additional K to Grade 12 students, or **57 K to Grade 8** students within the Colts Neck Schools.

57 students is the equivalent of 6-7 students per grade level.

more >

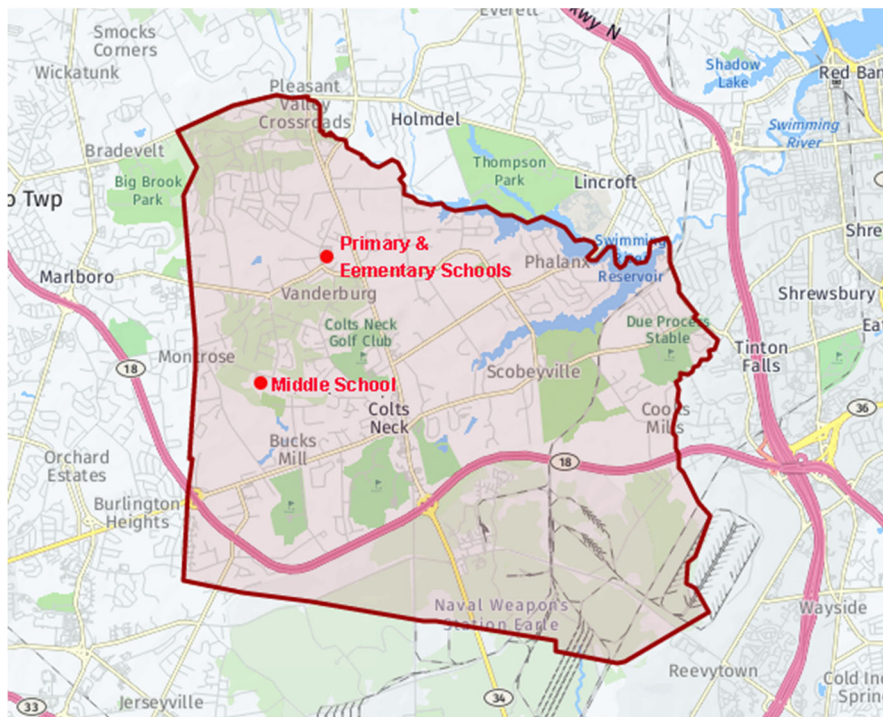


Colts Neck Township Schools
Brief Overview

The Colts Neck School District is a comprehensive community public school district serving students in pre-kindergarten through eighth grade in Colts Neck Township in Monmouth County, New Jersey. As of the 2021-22 school year, the district and its three schools had an enrollment of 997 students.

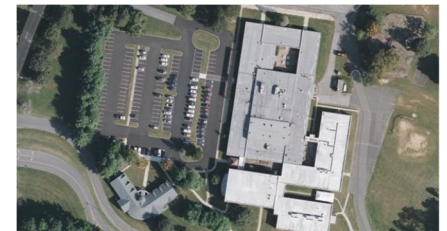
The district includes three schools and an administration building. The three schools are based on a PreK-2, 3-5, and 6-8 grade configurations. The **Conover Road Primary School**, the newest of the three, serves grades PreK-2. The **Conover Road School** currently serves grades 3-5 and has a functional capacity of 420 pupils. The **Cedar Drive School** currently serves grades 6-8 and has a functional capacity of 479 pupils. The district's preschool handicapped program is also housed in the Cedar Drive School..

Students in public school for ninth through twelfth grades attend Colts Neck High School, along with students from portions of Howell Township as part of the Freehold Regional High School District which serves students from Colts Neck Township, Englishtown, Farmingdale, Freehold Borough, Freehold Township, Howell Township, Manalapan Township and Marlboro Township.



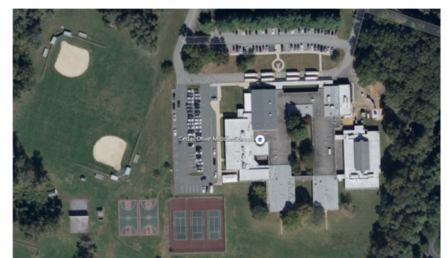
Primary School
56 Conover Rd.

Grades PK-2, 363 students



Elementary School
76 Conover Rd.

Grades 3-5, 310 students



Middle School
73 Cedar Drive

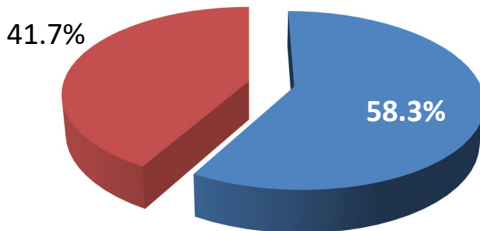
Grades 6-8, 324 students

Colts Neck Township Schools
Public & Private Enrollment Comparison

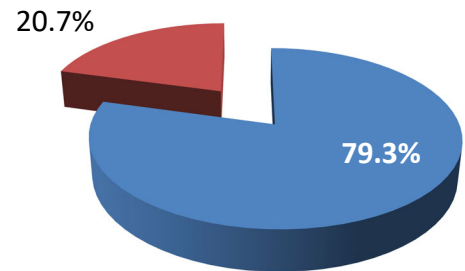
		Colts Neck	Mon Co	NJ
Kindergarten	Public	58.3%	86.9%	85.5%
	Private	41.7%	13.1%	14.5%
Elementary Gr 1-4	Public	79.3%	89.8%	89.5%
	Private	20.7%	10.2%	10.5%
Middle Gr 5-8	Public	80.5%	88.9%	89.5%
	Private	19.5%	11.1%	10.5%
High Sch Gr 9-12	Public	77.5%	86.3%	88.0%
	Private	22.5%	13.7%	12.0%

Private School enrollment in Colts Neck is significantly higher than in either Monmouth County or New Jersey

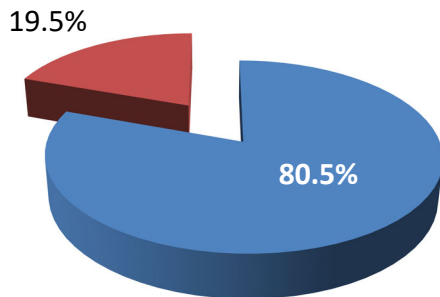
Kindergarten



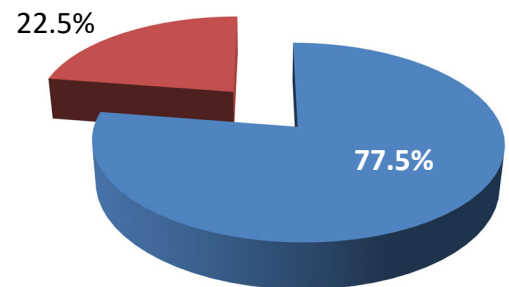
Elementary Sch Gr 1-4



Middle Sch Gr 5-8



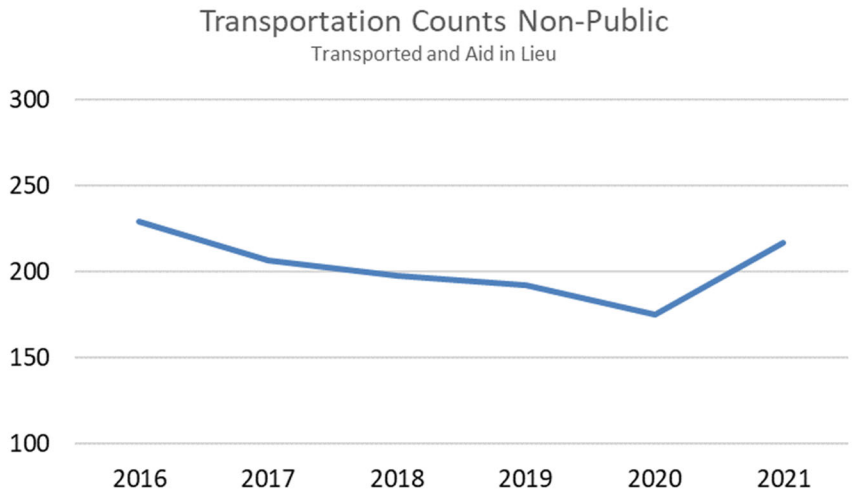
High Sch Gr 9-12



SOURCE: 2019: American Community Survey 1-Year Estimates

Colts Neck Township Schools
Private School Enrollments

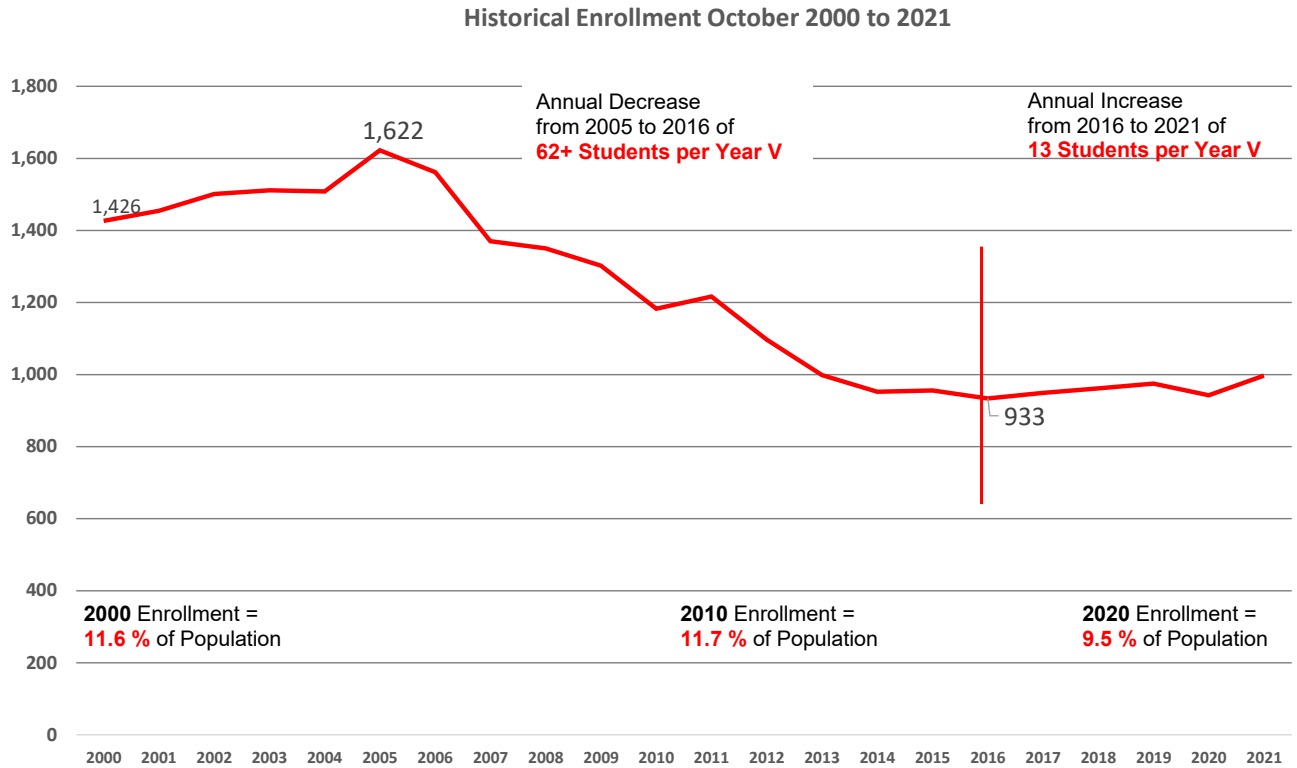
Private School enrollment in Colts Neck, as measured by Courtesy Transportation Counts, was generally on the decrease in the recent years since 2016. That decrease did not appear to be interrupted by the Pandemic but did increase in school year 2021-22. This 1-year increase occurs even as Public School enrollment is also increasing.



2016 represents the 2016-17 School Year
 SOURCE: District Records

	2016	2017	2018	2019	2020	2021
Transported	186	175	177	155	11	206
Aid in Lieu NP	43	32	21	37	175	11
	229	207	198	192	175	217

Colts Neck Township Schools
Enrollment History 2000-2020



As a Percent of Population, Public School K-8 Enrollment was stable at 11.6% in year 2000 and 11.7 % in the year 2010 but has since decreased to 9.5% in year 2020.

Since year 2000, enrollment was generally increasing to the recent high of 1,622 in year 2005 after which enrollments decreased through 2016 an average of 62.6 students per year.

Since that 2016 low of 933 students, enrollments have increased at a modest rate of 13 students, per year. This increase is occurring during the recent six years on which the projection is based.



Colts Neck Township Schools
Cohort Survival Methodology

The Methodology used in projecting enrollments is the recommended method of the New Jersey Department of Education (NJDOE) and is known as “Cohort Survival”.

Cohort Survival projections are based on historic enrollment and birth data in the individual school district and incorporate six years of actual enrollment data with trends that are expected to continue, without significant change in housing or birth rates.

Cohort is the name given to the common groups of children originally born in a given year and progressing, together, through the school system, one grade level to the next. It is mandatory to use the same data collection system at the same time each year.

Cohort Survival Ratios refer to the number of students from one year and grade level who “survive to” or enter the next grade level the following year. The Survival Ratio is then calculated for each grade level change between the six years of actual enrollments which yields 5 Survival Rates per grade change. The five changes are Averaged for each grade level change and it is that Average Survival Ratio between each grade that is used in the Projection.

The survival ratio indicates whether the enrollment is stable, increasing, or decreasing. A survival ratio of one indicates stable enrollment, less than one indicates declining enrollment, while greater than one indicates increasing enrollment. If, for example, a school district had 110 first graders and the next year only had 95 second graders, the Grade 1 to Grade 2 Survival Ratio would be 95/110 or 0.863.

The CSR method assumes that what happened in the very recent past will also happen in the near future. In essence, this method provides a linear projection of the population. The CSR method is most applicable for districts that have relatively stable increasing or decreasing trends without any major unpredictable fluctuations from year to year. Studies indicate this methodology has an accuracy of +1% per year.

In school districts encountering a **change in trends**, the CSR method must be modified and supplemented with additional information. Adjustments to the Standard Method are most often made for significant increases in Residential Construction, changes to educational programs, or school closures and redistricting.

The NJDOE worksheet for the District Cohort Survival projection is found in the Appendix.



95:110

95

110

.863

Colts Neck Township Schools

Adjustments to the Standard Cohort Survival Methodology

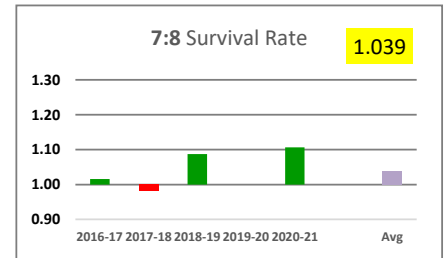
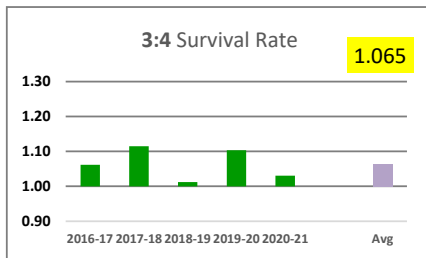
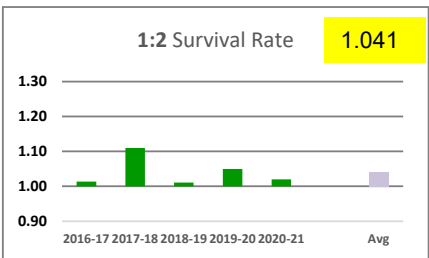
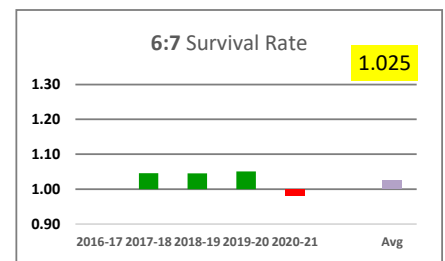
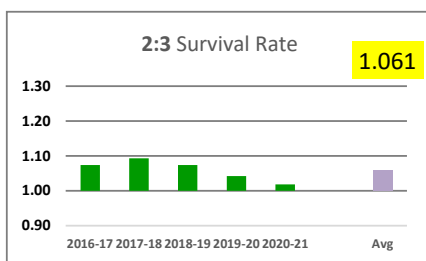
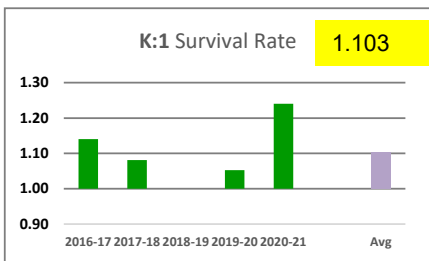
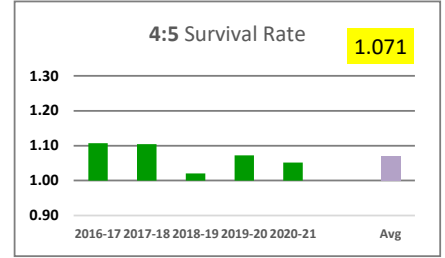
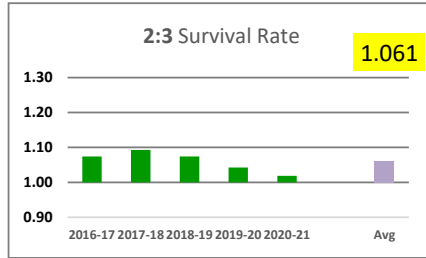
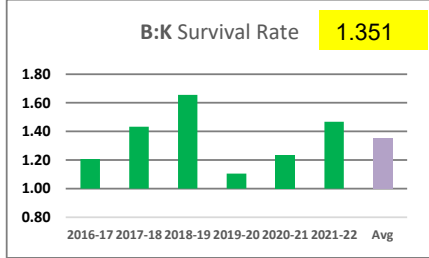
Residential Construction

An adjustment is made for accelerated housing construction, for the COAH housing settlement. Schedules of new housing units by project were documented on page 12. Schedules of Student Yield from New Housing are found on page 14.

Students are added to the standard projection in an overlay method for each year, equally divided across 13 grade levels (with reporting of only the Districts K-8 portion); and those added students are then “survived” to the next year at the district’s grade level Survival Rates. The following years’ Student Yield is added and the overlay process repeats.



Colts Neck Township Schools
Grade Level Cohort Survival Ratios and Cohort Growth

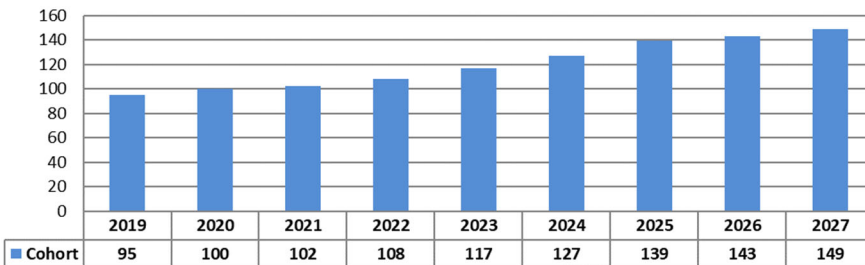


Survival Rates - Green bars are rates above 100% ...growth from one grade to the next...and red bars are below 100% (decreasing enrollment).

Birth to Kindergarten Survival Ratio, averaging 1.351 is unusually high and was impacted by Pandemic related interruptions in 2019.

The K:1 S/R also evidences a rebound from the low 2019 rate.

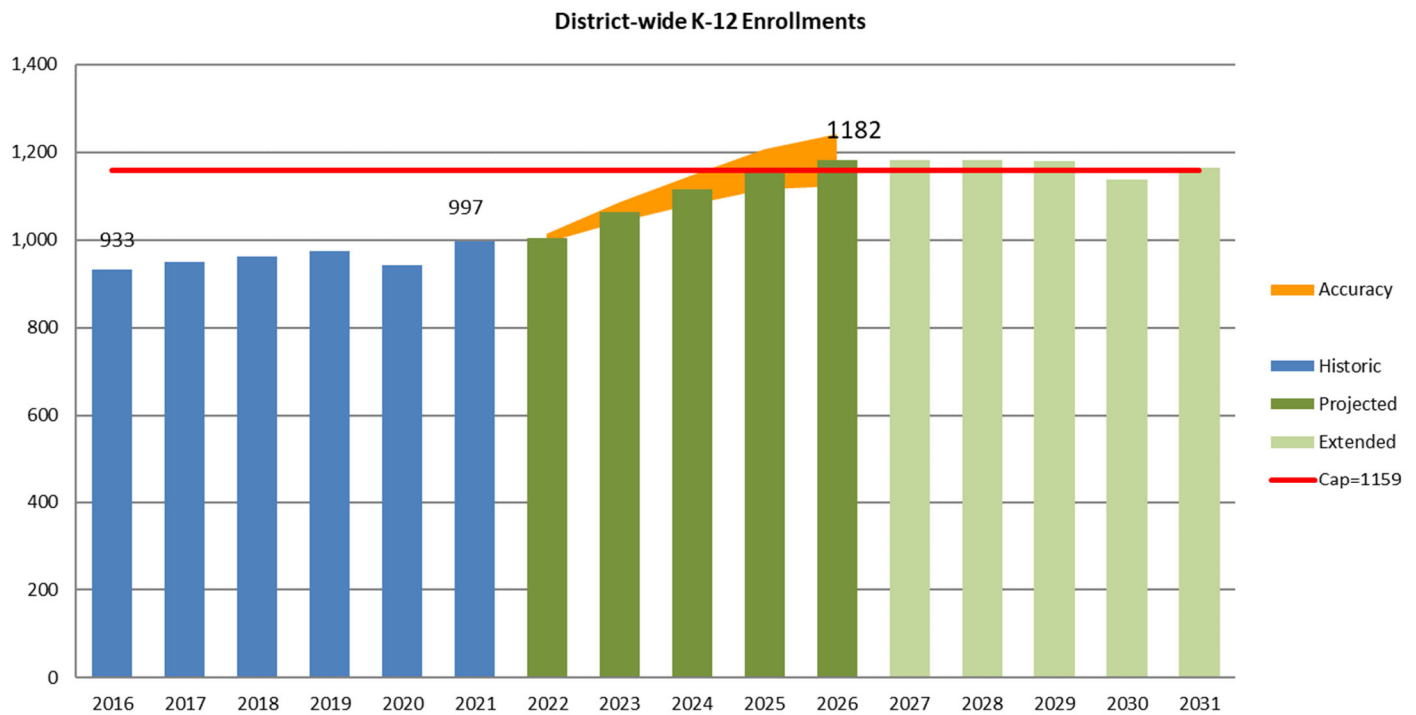
Cohort Growth: 2019 K - 2027 Gr 8



General Cohort Growth is such that a year 2019 Kindergarten of 95 students survives as an 8th Grade graduating class of 149 students in year 2027.



Colts Neck Township Schools
General Notes on reading the Charts

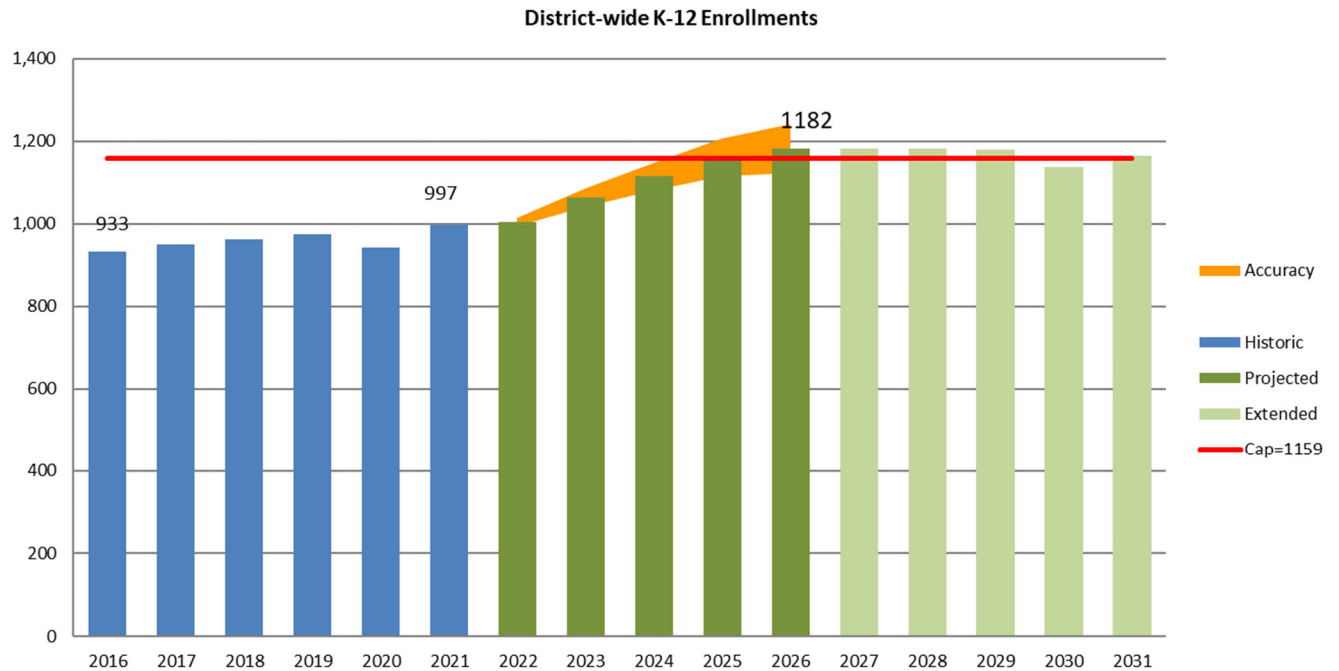


Cohort Survival Enrollment Projections have an **Accuracy** of $\pm 1\%$ per year as represented by the golden cone on the chart. Though not shown on every chart, this is also true of the Grade Level and School based projections. Application of the $\pm 1\%$ per year rule puts the year 2026 peak "1,182" students" projection in a range from 995 to 1,241 students.

Historic Enrollments are the **blue bars**. Projected Enrollments are the green bars and extended projections are the lighter green bars.

The red line indicate the student **Capacity** as per the NJ DOE Long Range Facilities Plan in a local assessment of "District Practice".

Colts Neck Township Schools
District-wide Enrollments



Colts Neck Township Schools
 57 K-8 Students from new housing

	TOTAL	Average	Change	%Chg
Historic	2016	933		
	2017	949		
	2018	961		
	2019	975	960	
	2020	942		
	2021	997		64
Projected	2022	1,005		
	2023	1,063		
	2024	1,114	1,105	
	2025	1,161		
	2026	1,182		185
Extended	2027	1,183		
	2028	1,181		
	2029	1,180	1,169	
	2030	1,137		
	2031	1,165		-17

The 2021 enrollment is 64 students (6.9%) more than the 2016 enrollments at the beginning of the historic period having increased to 997 students. That increase is the equivalent of 7 students per grade.

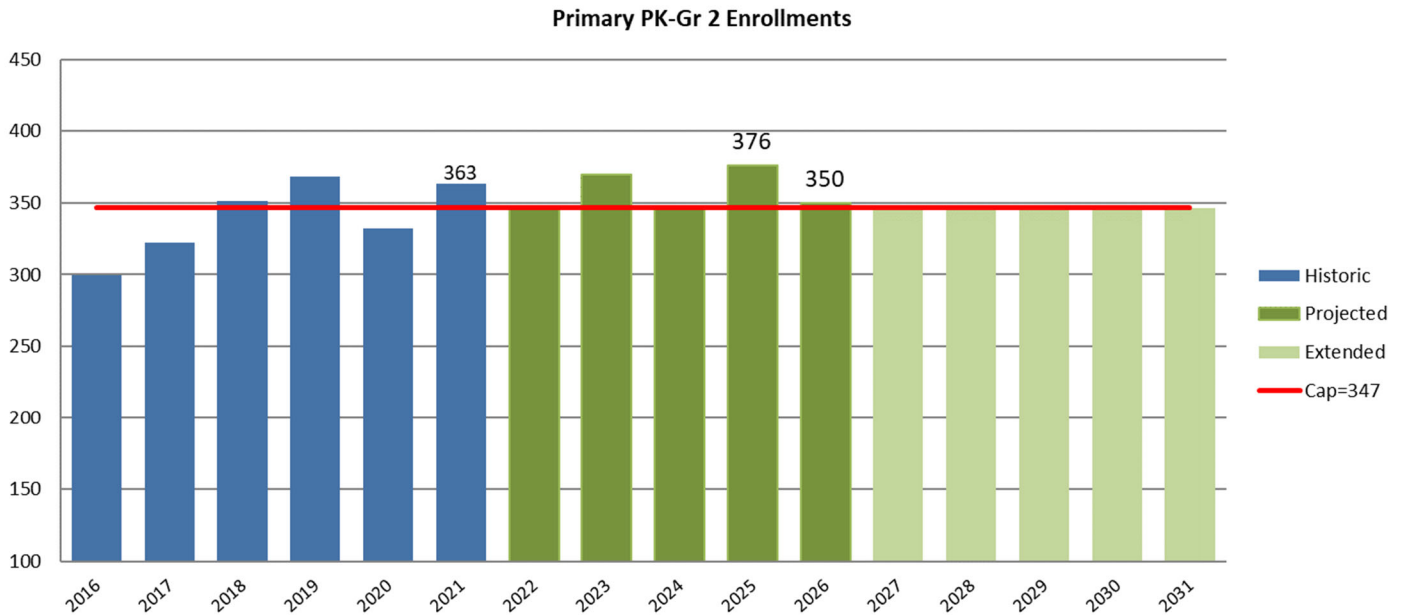
Enrollments are projected to grow by 187 students to the peak year of 2026-27 where enrollments will have increased to 1,182 students, 18.4% over the end of the historic period.

57 Pre-K to Gr 8 students are added from new housing in the projection period, from a K-12 total of 82.

District-wide enrollments will exceed the District Capacity by 2 students in school year 2025-26 and by 23 students in 2026-27 school year.



Colts Neck Township Schools
Primary Pre-K-Grade 2 Enrollments



Primary Pre-K-Grade 2 Enrollments

18 Students from new housing to Public School at the Primary level

	Year	PK		K	1		2		K-2		PK-5	TOTAL	Period to Period	
		PK	SCSE		1	2	SCSE	Average	Change					
Historic	2016	76	3	64	74	81	2	300						
	2017	85	2	86	73	75	1	322						
	2018	73	2	101	93	81	1	351						
	2019	71	6	95	101	94	1	368	339					
	2020	41	6	79	100	106	0	332						
	2021	42	8	113	98	102	0	363	64	21.2%				
Projected	2022	42	9	69	125	102	1	347						
	2023	42	8	111	77	131	1	370						
	2024	42	8	90	124	83	1	348	358					
	2025	42	8	92	102	132	1	376						
	2026	42	8	91	101	106	1	350	-13	-3.8%				
Extended	2027	42	8	91	101	106	1	348						
	2028	42	8	91	100	105	1	347						
	2029	42	8	91	100	104	1	347	347					
	2030	42	8	91	100	104	1	347						
	2031	42	8	91	100	104	1	347	-3	-0.9%				

Sections

	15		12		18		20		20		12	
	PK	PKSE	K	1	2	SE	Total					
	6	1	4	4	5	1	21					
	6	1	5	4	4	1	21					
	5	1	6	5	5	1	23					
	5	1	6	6	5	1	24					
	3	1	5	5	6	0	20					
	3	1	7	5	6	0	22					
	3	1	4	7	6	1	22					
	3	1	7	4	7	1	23					
	3	1	5	7	5	1	22					
	3	1	6	6	7	1	24					
	3	1	6	6	6	1	23					
	3	1	6	6	6	1	23					
	3	1	6	6	6	1	23					
	3	1	6	6	6	1	23					

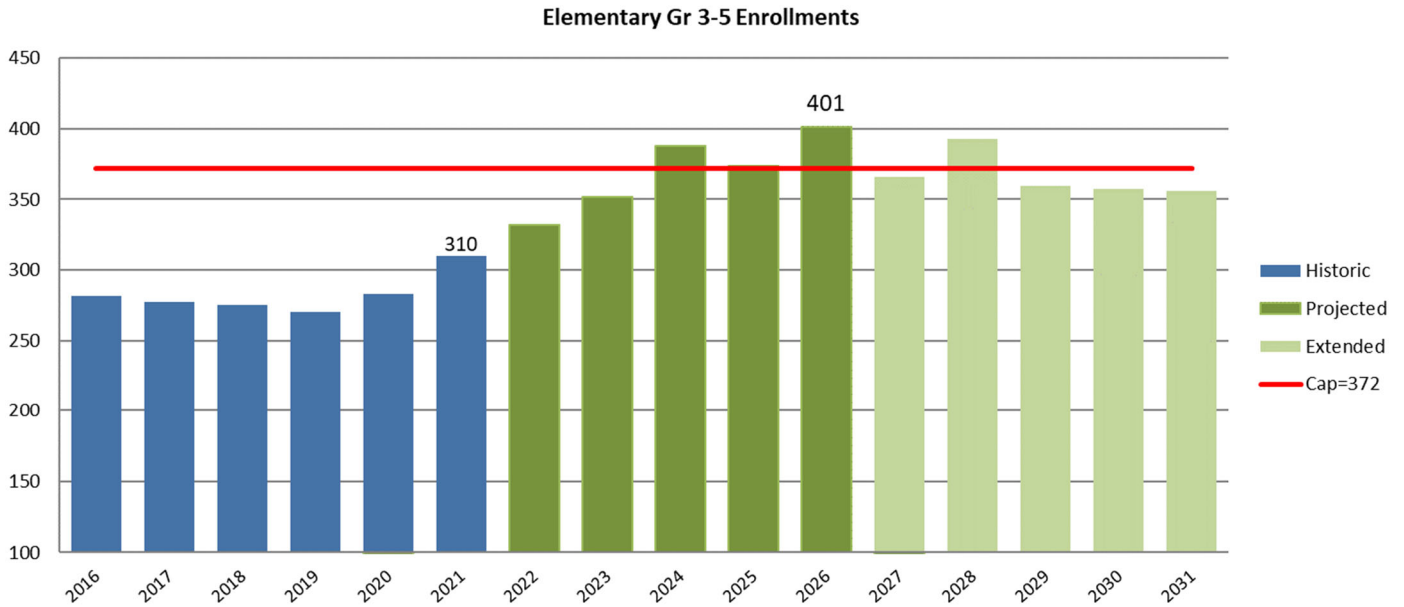
In the historic period enrollments, that averaged 339 students, increased by 64 students to a total of 363 students in school year 2021-22.

In the projection period, 18 students are added to Grades K-2 from new housing starting in year 2020. Enrollments are volatile in the projection period between 240 and 376 students and averaging 358 students. Enrollments exceed the 347 student capacity by 29 students in school year.2025-26. However, the Section count, at 24, is the same as the earlier 2019-20 count.

In the Extended Projection, enrollments are stable, averaging 347 students or 100% of capacity.



Colts Neck Township Schools
Grade 3-5 Elementary



Elementary Grade 3 - Grade 5 Enrollments

18 Students from new housing at this Elementary level

	Year	K-5			PK-5	Period to Period		
		3	4	5	SCSE	TOTAL	Average	Change
Historic	2016	81	93	106	2	282		
	2017	87	86	103	1	277		
	2018	82	97	95	1	275		
	2019	87	83	99	1	270	283	
	2020	98	96	89	0	283		
	2021	108	101	101	0	310		29 10.1%
Projected	2022	108	115	108	1	332		
	2023	110	117	125	1	351		
	2024	141	119	127	1	388	369	
	2025	90	153	130	1	373		
	2026	140	96	164	1	401		91 27.5%
Extended	2027	113	149	103	1	366		
	2028	112	120	160	1	392		
	2029	111	119	128	1	359	366	
	2030	111	118	128	1	357		
	2031	111	118	127	1	356		-45 -12.4%

Sections

	20	20	20	12	Total
	3	4	5	SE	
	5	5	6	1	17
	5	5	6	1	17
	5	5	5	1	16
	5	5	5	1	16
	5	5	5	0	15
	6	6	6	0	18
	6	6	6	1	19
	6	6	7	1	20
	8	6	7	1	22
	5	8	7	1	21
	8	5	9	1	23
	6	8	6	1	21
	6	6	8	1	21
	6	6	7	1	20
	6	6	7	1	20
	6	6	7	1	20

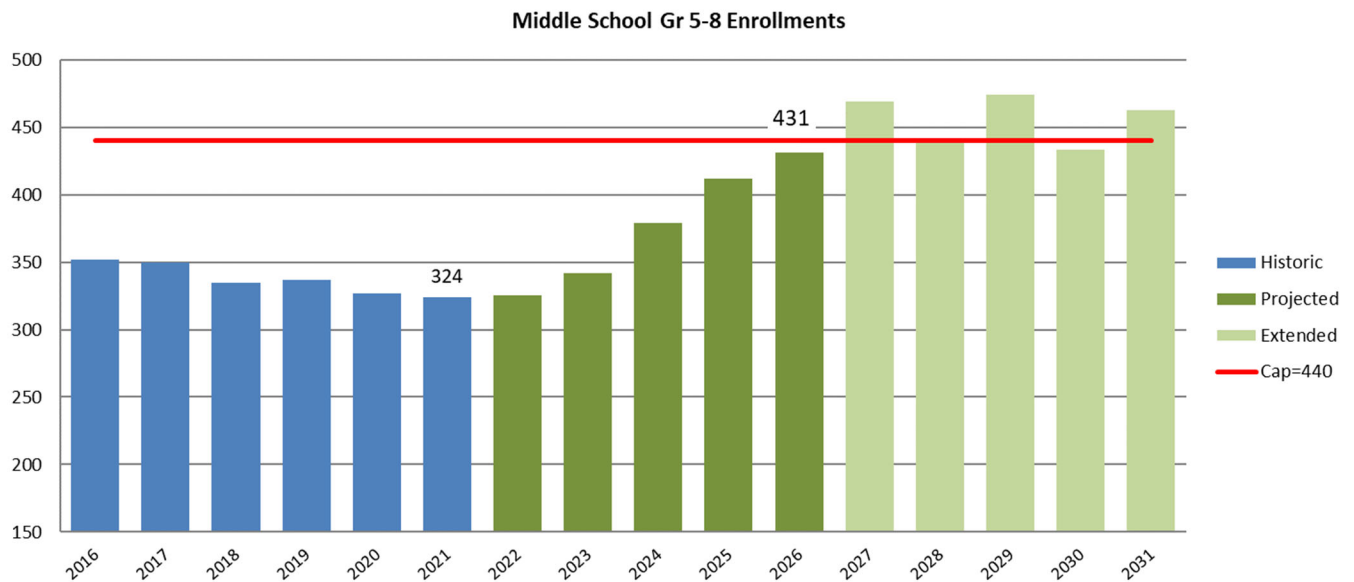
In the historic period enrollments that averaged 283 students increased 29 students to a total of 310 students.

In the projection period, 18 students are added to Grades 3-8 from new housing and overall increases by 91 students. Enrollments exceed the 372 student capacity by 29 students in school year.2025-26. However, the maximum Section count, at 23, is 5 higher than the maximum 18 in the historic period.

Extended Enrollments in years 6 to 10, average 366 students.



Colts Neck Township Schools
Middle School Grade 6-8 Enrollments



Middle School Grade 6-8 Enrollments

19 Students from new housing to Public Schools at the Middle School.

	Year	Gr 5-8				TOTAL	Period	
		6	7	8	SCSE		Average	Change
Historic	2016	113	126	113	0	352		
	2017	109	113	128	0	350		
	2018	110	114	111	0	335		
	2019	98	115	124	0	337	338	
	2020	109	103	115	0	327		
	2021	103	107	114	0	324		-28 -8.0%
Projected	2022	109	106	111	0	325		
	2023	118	113	111	0	342		
	2024	136	123	119	0	379	378	
	2025	139	142	130	0	412		
	2026	140	143	148	0	431		107 32.9%
Extended	2027	177	144	149	0	469		
	2028	111	181	149	0	441		
	2029	172	114	188	0	474	456	
	2030	138	177	118	0	433		
	2031	138	142	183	0	463		31 6.7%

In the historic period enrollments decreased by 28 students.

In the Projection period 19 students are added to the enrollments from new housing in a period when enrollments will increase by 107 students to a peak of 431 in 2026, just 9 students under the 440 student capacity.

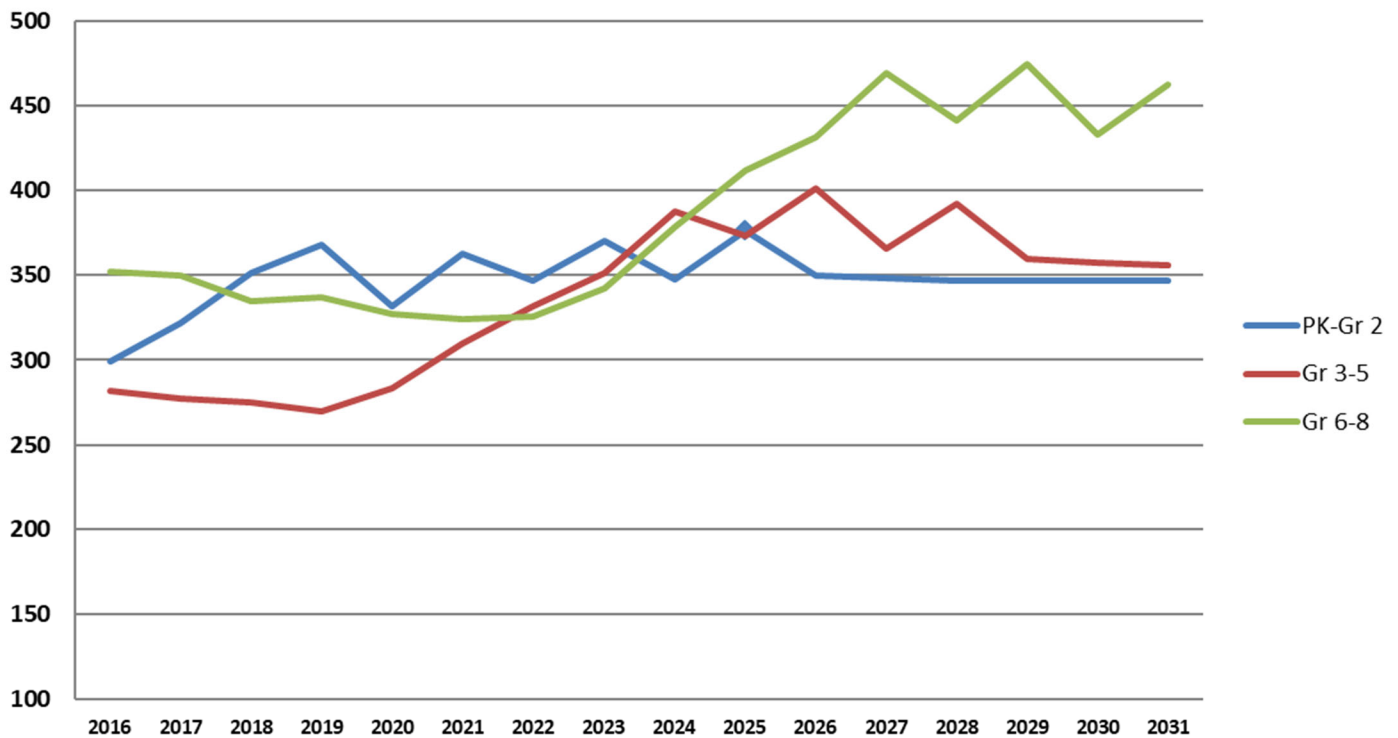
In the Extended Projection, capacity is exceeded in 4 of 5 years by as much as 24 students in 2029.



Colts Neck Township Schools
Comparative Enrollments by Grade Level Organization

		PK-Gr 2	Gr 3-5	Gr 6-8	TOTAL	
Historic	2016	300	282	352	933	
	2017	322	277	350	949	
	2018	351	275	335	961	
	2019	368	270	337	975	
	2020	332	283	327	942	
	2021	363	310	324	997	
Projected	2022	347	332	325	1,005	HIGH 5 Yr Projection
	2023	370	351	342	1,063	LOW
	2024	348	388	379	1,114	
	2025	376	373	412	1,161	
	2026	350	401	431	1,182	
	Extended	2027	348	366	469	1,183
2028		347	392	441	1,181	
2029		347	359	474	1,180	
2030		347	357	433	1,137	
2031		347	356	463	1,165	

Comparative Enrollments by Grade Level Organization



APPENDIX:

A: NJDOE Cohort Survival Worksheets
Standard without New Housing
Accelerated with New Housing and Students

B: School Capacities Report



Adjusted for Impact of New Housing Cohort-Survival Enrollment Projection Worksheet - District

DISTRICT NAME: Colts Neck Township Schools

COUNTY: Monmouth

FALL REPORT AND "s" = survival rate Enrollments are from NJ Smart October submissions

School Year	Births 5 Yrs. Ago	"s"	K	1st Gr.	2nd Gr.	3rd Gr.	4th Gr.	5th Gr.	K-5 Subt.	SCSE	K-5 Total (excl. PK)	PK SCSE	PK 3 yrs.	PK 4yrs.	PK-5 Total	6th Gr.	7th Gr.	8th Gr.	6-8 Subt.	SCSE	6-8 Total	9th Gr.	10th Gr.	11th Gr.	12th Gr.	9-12 Subt.	SCSE	9-12 Total	PK Subt.	K-12 Subt.	K-12 Total	PK-12 Total	New Children Cum	New Children Yr Add		
																																			"s"	"s"
V to 2 decimal places																																				
5-YR PROJECTIONS PLUS NEW HOUSING																																				
2022-23	51	1.351	69	125	102	108	115	108	627	1	628	9	0	42	679	109	106	111	325	0	325	0	0	0	0	0	0	0	51	952	954	1005	0	0		
			1.103	1.041	1.061	1.065	1.071									1.077	1.025	1.039				0.000	0.000	0.000	0.000											
2023-24	81	1.351	111	77	131	110	117	125	670	1	672	8	0	42	721	118	113	111	342	0	342	0	0	0	0	0	0	50	1012	1013	1063	18	18			
			1.103	1.041	1.061	1.065	1.071									1.077	1.025	1.039				0.000	0.000	0.000	0.000											
2024-25	65	1.351	90	124	83	141	119	127	684	2	685	8	0	42	735	136	123	119	379	0	379	0	0	0	0	0	50	1062	1064	1114	46	27				
			1.103	1.041	1.061	1.065	1.071									1.077	1.025	1.039				0.000	0.000	0.000	0.000											
2025-26	66	1.351	92	102	132	90	153	130	698	2	699	8	0	42	749	139	142	130	412	0	412	0	0	0	0	0	50	1109	1111	1161	78	32				
			1.103	1.041	1.061	1.065	1.071									1.077	1.025	1.039				0.000	0.000	0.000	0.000											
2026-27	67	1.351	91	101	106	140	96	164	699	2	701	8	0	42	751	140	143	148	431	0	431	0	0	0	0	0	50	1131	1132	1182	82	5				
			1.103	1.041	1.061	1.065	1.071									1.077	1.025	1.039				0.000	0.000	0.000	0.000											
Change # Students									76	78			78					107	107			0	0												185	
Change % Students									12%	13%			12%				33%	33%			#DIV/0!	#DIV/0!														19%

6-10-YR PROJECTIONS PLUS NEW HOUSING NOT CONSIDERED RELIABLE																																				
2027-28	67	1.351	91	101	106	113	149	103	662	1	664	8	0	42	714	177	144	149	469	0	469	0	0	0	0	0	50	1131	1132	1183	0	0				
			1.103	1.041	1.061	1.065	1.071									1.077	1.025	1.039				0.000	0.000	0.000	0.000											
2028-29	67	1.351	91	100	105	112	120	160	688	2	689	8	0	42	739	111	181	149	441	0	441	0	0	0	0	0	50	1129	1131	1181	0	0				
			1.103	1.041	1.061	1.065	1.071									1.077	1.025	1.039				0.000	0.000	0.000	0.000											
2029-30	67	1.351	91	100	104	111	119	128	654	1	656	8	0	42	706	172	114	188	474	0	474	0	0	0	0	0	50	1128	1130	1180	0	0				
			1.103	1.041	1.061	1.065	1.071									1.077	1.025	1.039				0.000	0.000	0.000	0.000											
2030-31	67	1.351	91	100	104	111	118	128	652	1	654	8	0	42	704	138	177	118	433	0	433	0	0	0	0	0	50	1085	1087	1137	0	0				
			1.103	1.041	1.061	1.065	1.071									1.077	1.025	1.039				0.000	0.000	0.000	0.000											
2031-32	67	1.351	91	100	104	111	118	127	651	1	652	8	0	42	703	138	142	183	463	0	463	0	0	0	0	0	50	1114	1115	1165	0	0				
			1.103	1.041	1.061	1.065	1.071									1.077	1.025	1.039				0.000	0.000	0.000	0.000											
Change # Students									-19	-48			-48					31	31			0	0												-17	
Change % Students									-7%	-7%			-6%				7%	7%			#DIV/0!	#DIV/0!														-1%

KEY to Number Colors


- 99 Standard number with no modifications to methodology
- 99 Provisional, but uncertified births from the PA Department of Health
- 99 Births projected as an average of the prior 6 years, including provisional data...and projected students resulting from this "less accurat" average
- 99 Students per Grade Level added for residential development
- 99 Cumulative number of special education students to be brought back in-district, included in the count below it

The above information is prepared and certified by a qualified demographer.

Firm Name: Sundance Associates 117 Greenvale Ct. Cherry Hill NJ 08034

Name: George B. Sundell Tel 856-755-0174 Email: GSundell@sundanceassoc.com

Signature: *George B. Sundell* Date: March 18, 2022





FES and District Practices Capacity Report

County: MONMOUTH

District: Colts Neck Twp

District Code: 0945

District Type:

LRFP: 2013 LRFP

Pre-Kindergarten Type: None Selected

Kindergarten Type: None Selected

NOTE: The FES Analysis is based on the FES version referenced in the 2002 Bi-Annual Report.

School Code	Existing School Name	Proposed School Name	Proposed Grades	Proposed School Enrollment	Existing Capacity				Proposed Capacity			
					FES Capacity		District Practices Capacity		FES Capacity		District Practices Capacity	
					Existing FES Capacity	Capacity Status	Existing District Practices Capacity	Capacity Status	Proposed FES Capacity	Capacity Status	Proposed District Practices Capacity	Capacity Status
030	Cedar Drive	Cedar Drive	6, 7, 8	308	439.56	131.56	439.20	131.20	439.56	131.56	439.20	131.20
060	Conover Road Elementary School	Conover Road Elementary School	3, 4, 5, SCSEK5	302	369.13	67.13	372.60	70.60	369.13	67.13	372.60	70.60
050	Conover Road Primary School	Conover Road Primary School	K, 1, 2, PK3, PK4, SCSEPK	337	301.90	-35.10	346.05	9.05	301.90	-35.10	346.05	9.05
District Totals				947	1,110.59	163.59	1,157.85	210.85	1,110.59	163.59	1,157.85	210.85
Grade Totals:		Overassigned Students	Unassigned Students									
PK		0	0	37	29.40	-7.60	0.00	-37.00	29.40	-7.60	0.00	-37.00
Grades K-5		0	0	602	641.63	39.63	718.65	116.65	641.63	39.63	718.65	116.65
Grades 6-8		0	0	308	439.56	131.56	439.20	131.20	439.56	131.56	439.20	131.20
Grades 9-12		0	0	0	0.00	0.00	0.00	0.00	0.00	0.00	0.00	0.00

"Overassigned" represents the number of students, based on the Proposed School Enrollments, that exceed the Proposed District-wide Enrollments.

"Unassigned" represents the number of students, based on the Proposed District-wide Enrollments, that are not assigned to a school.

Negative numbers indicate inadequate capacity; Positive numbers indicate surplus capacity.