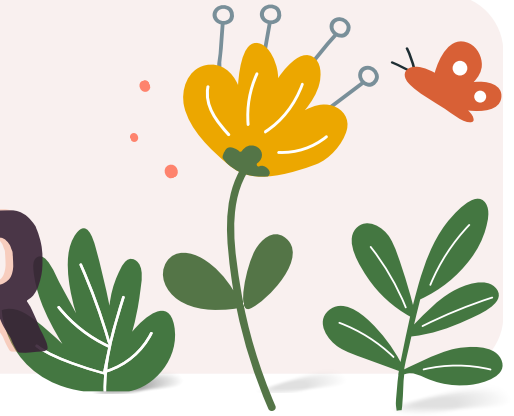


MAY+JUNE NEWSLETTER



REMINDERS:

- Students LAST DAY of school is June 13.

MONTH AT A GLANCE

- * Identify central idea and author's purpose
- Identify story elements
- Review diagraphs, consonant blends, and long/short vowels
- Represent and write numbers to 20
- Count to 100 by ones and tens
- Add and Subtract fluently
- count and compare groups

LETTERS & SIGHT WORDS

Letters:

Review

Sight words:

what, want, were, give, live,
one, some, come, there,
where

CALENDAR

May 7 - 2 HR Early Dismissal

May 15 - 2 HR Early Dismissal

May 26 - NO SCHOOL: Memorial Day

June 5 - Field Day!! *

June 11 - 2 HR Early Dismissal*

June 12 - 2 HR Early Dismissal

June 13- 2 HR Early Dismissal: **LAST DAY OF SCHOOL FOR STUDENTS**

