

Community Facilities District No. 2002-1

Annual Special Tax Report

Fiscal Year Ending June 30, 2022

Murrieta Valley Unified School District

2022 / 2023



A division of California Financial Services

School District

Murrieta Valley Unified School District
41870 McAlby Court
Murrieta, CA 92553
T. (951) 696-1600

Fiscal Agent

Zions Bancorporation, National Association
550 South Hope Street, Suite 2875
Los Angeles, CA 90071

Special Tax Administrator

KeyAnalytics
a division of California Financial Services
555 Corporate Drive, Suite 100
Ladera Ranch, CA 92694
T. (949) 282-1077

Special Assessment Questions
T. (877) 575-0265
propertytax@calschools.com

Bond Counsel

Jones Hall
475 Sansome Street, Suite 1700
San Francisco, CA 94111
T. (415) 391-5780

Table of Contents

Introduction	1
I. CFD Background	3
A. Location	3
B. Formation	3
C. Bonds	5
II. Fiscal Year 2021/2022 Annual Special Tax	7
A. Special Tax Levy	7
B. Annual Special Tax Collections and Delinquencies	8
III. Fund and Account Activity and Balances	9
A. Fiscal Agent Accounts	9
B. Sources and Uses of Funds	10
IV. Senate Bill 165	11
A. Authorized Facilities	11
B. 2002 Special Tax Bonds	13
C. 2006 Special Tax Refunding Bonds	14
D. 2016 Special Tax Refunding Bonds	15
E. Special Taxes	17
F. Pooled Special Tax Accounts	19
V. Minimum Annual Special Tax Requirement	22
A. Minimum Annual Special Tax Requirement	22
B. Administrative Expense Budget	23
VI. Special Tax Classification	24
A. Developed Property	24
VII. Fiscal Year 2022/2023 Special Tax Levy	25

Exhibit A – Rate and Method of Apportionment

Exhibit B – CFD Boundary Map

Exhibit C – Assessor's Parcel Maps

Exhibit D – 2016 Special Tax Refunding Bonds Debt Service Schedule

Exhibit E – Delinquent Annual Special Tax Report

Exhibit F – Summary of Transactions for Fiscal Agent Accounts

Exhibit G – Annual Special Tax Roll for Fiscal Year 2022/2023

Introduction

Community Facilities District No. 2002-1 (“CFD No. 2002-1”) of the Murrieta Valley Unified School District (the “School District”) was formed pursuant to the terms and provisions of the “Mello-Roos Community Facilities Act of 1982”, as amended (the “Act”), being Chapter 2.5, Part 1, Division 2, Title 5 of the Government Code of the State of California. CFD No. 2002-1 is authorized under the Act to finance certain facilities (the “Authorized Facilities”) as established at the time of formation.

This Annual Special Tax Report (the “Report”) summarizes certain general and administrative information and analyzes the financial obligations of CFD No. 2002-1 for the purpose of establishing the Annual Special Tax Levy for Fiscal Year 2022/2023. The Annual Special Tax Levy is calculated pursuant to the Rate and Method of Apportionment (the “RMA”) which is attached to this Report as Exhibit A.

All capitalized terms not defined herein are used as defined in the RMA and/or Fiscal Agent Agreements between the School District and Zions Bancorporation, National Association acting as Fiscal Agent (the “Fiscal Agent”).

This Report is organized into the following Sections:

Section I – CFD Background

Section I provides background information relating to the formation of CFD No. 2002-1 and the long-term obligations issued to finance the Authorized Facilities.

Section II – Fiscal Year 2021/2022 Special Tax Levy

Section II provides information regarding the levy and collection of Special Taxes for Fiscal Year 2021/2022 and an accounting of the remaining collections.

Section III – Fund and Account Balances

Section III examines the financial activity within the funds and accounts associated with CFD No. 2002-1.

Section IV – Senate Bill 165

Section IV provides information required under Senate Bill 165 (“SB 165”) regarding the initial allocation of bond proceeds and the expenditure of the Annual Special Taxes and bond proceeds utilized to fund the Authorized Facilities of CFD No. 2002-1 for Fiscal Year 2021/2022.

Section V – Minimum Annual Special Tax Requirement

Section V calculates the Minimum Annual Special Tax Requirement based on the obligations of CFD No. 2002-1 for Fiscal Year 2022/2023.

Section VI – Special Tax Classification

Section VI provides updated information regarding the Special Tax classification of parcels within CFD No. 2002-1.

Section VII – Fiscal Year 2022/2023 Special Tax Levy

Section VII provides the Fiscal Year 2022/2023 Special Tax levy based on updated Special Tax classifications and the Minimum Annual Special Tax Requirement.

I. CFD Background

This Section provides background information regarding the formation of CFD No. 2002-1 and the bonds issued to fund the Authorized Facilities.

A. Location

CFD No. 2002-1 is located approximately one and a half miles southwest of the 15 Freeway and is bounded by Washington Avenue on the northeast, Nutmeg Street and Calle del Oso Oro in the City of Murrieta (the “City”). CFD No. 2002-1 encompasses approximately 84.53 gross acres. For reference, the boundary map of CFD No. 2002-1 is included as Exhibit B and the current Assessor’s Parcel maps are included as Exhibit C.

B. Formation

CFD No. 2002-1 was formed and established by the School District on January 17, 2002 under the Act, following a public hearing conducted by the Board of Education of the School District (the “Board”), as legislative body of CFD No. 2002-1, and a landowner election at which the qualified electors of CFD No. 2002-1 authorized CFD No. 2002-1 to incur bonded indebtedness in an amount not to exceed \$4,000,000 and approved the levy of Annual Special Taxes.

CFD No. 2002-1 was also formed pursuant to First Amended and Restated Impact Mitigation Agreement (“Agreement”) dated December 13, 2001 by and between the School District, William Lyon and J.P. Rhoades Development (the “Property Owners”). The Agreement established amounts to be paid to the School District or other public agencies to mitigate any impacts of the development and rather, it sets forth terms for the issuance of Bonds by CFD No. 2002-1 to finance all or a portion of fees authorized to be imposed on the property independent of the Agreement. Specifically, the Agreement establishes terms by which CFD No. 2002-1 will issue Bonds to finance the school fees a (For details, see the Agreement.)

The table below provides information related to the formation of CFD No. 2002-1.

**Board Actions Related to
Formation of CFD No. 2002-1**

Resolution	Board Meeting Date	Resolution No.
Resolution of Intention	December 13, 2001	01/02-21
Resolution to Incur Bonded Indebtedness	December 13, 2001	01/02-22
Resolution of Formation	January 17, 2002	01/02-26
Resolution of Necessity	January 17, 2002	01/02-27
Resolution Calling Election	January 17, 2002	01/02-28
Ordinance Levying Special Taxes	February 14, 2002	Ordinance No. 01/02-03

A Notice of Special Tax Lien was recorded in the real property records of the County of Riverside (“County”) on January 29, 2002, as Instrument No. 2002-049176 on all property within CFD No. 2002-1.

C. Bonds

1. 2002 Special Tax Bonds

On April 24, 2002 the 2002 Special Tax Bonds of the Murrieta Valley Unified School District Community Facilities District No. 2002-1 (“2002 Bonds”) were issued in the amount of \$2,795,000. The 2002 Bonds were authorized and issued under and subject to the terms of the Fiscal Agent Agreement, dated March 1, 2002 (“2002 FAA”), and the Act. The 2002 Bonds were issued to fund the Authorized Facilities of CFD No. 2002-1, fund a reserve fund for the 2002 Bonds, pay certain administrative expenses of CFD No. 2002-1, pay the costs of issuing the 2002 Bonds and fund capitalized interest on the 2002 Bonds through March 1, 2004. For more information regarding the use of the 2002 Bond proceeds please see Section IV of this Report.

2. 2006 Special Tax Refunding Bonds

On August 31, 2006 the 2006 Special Tax Refunding Bonds (“2006 Bonds” collectively with the 2002 Bonds “Prior Bonds”) were issued by CFD No. 2002-1 in the amount of \$3,216,418.68. The Bonds were issued for the purpose of refunding the 2002 Bonds, financing the Authorized Facilities of CFD No. 2002-1, funding a reserve fund for the 2006 Bonds and pay the costs of issuing the 2006 Bonds. The 2006 Bonds were authorized and issued under and subject to the terms of the Fiscal Agent Agreement, dated August 1, 2006 (“2006 FAA”), and the Act. For more information regarding the use of the 2006 Bond proceeds please see Section IV of this Report.

3. 2016 Special Tax Refunding Bonds

On July 20, 2016 the 2016 Special Tax Refunding Bonds (“2016 Bonds”) were issued by CFD No. 2002-1 in the amount of \$3,450,000. The 2016 Bonds were issued for the purpose of refunding the 2006 Bonds, finance the Authorized Facilities of CFD No. 2002-1 and pay the costs of issuing the 2016 Bonds. The 2016 Bonds were authorized and issued under and subject to the terms of the FAA dated July 1, 2016 (“2016 FAA”), and the Act. The 2016 Bonds are Local Obligation Bonds of the Murrieta Valley Unified School District Public Financing Authority (“Authority”) and are utilized, with the debt service payments from CFD Nos. 2000-1, 2000-2,

2001-1, 2002-1, 2002-2, 2002-3, 2003-1, 2003-2 and Improvement Area A of CFD No. 99-1, Improvement Area B of CFD No. 99-1 and Improvement Area B of CFD No. 2002-5 to pay the debt service of the 2016 Series A Special Tax Revenue Bonds of the Authority.

The 2016 Bonds are payable from the Net Special Tax Revenues levied on property within CFD No. 2002-1 according to the RMA. A copy of the debt service schedule of the 2016 Bonds is included as Exhibit D.

II. Fiscal Year 2021/2022 Annual Special Tax

Each Fiscal Year, CFD No. 2002-1 levies and collects Annual Special Taxes pursuant to the RMA in order to meet the obligation for that Fiscal Year. This Section provides a summary of the levy and collection of Annual Special Taxes in Fiscal Year 2021/2022.

A. Special Tax Levy

The Special Tax levy for Fiscal Year 2021/2022 is summarized by Special Tax classification in the table below.

**Fiscal Year 2021/2022
Annual Special Tax Levy**

Property Classification	Number of Units/Acres	Assigned Annual Special Tax Rate	Total Assigned Annual Special Taxes
Developed Property	300 Units	\$883.54 Per Unit	\$265,062.00
Undeveloped Property	0.00 Acres	\$0.00 Per Acre	0.00
Total	300 Units		\$265,062.00

B. Annual Special Tax Collections and Delinquencies

Delinquent Annual Special Taxes for CFD No. 2002-1, as of June 30, 2022, for Fiscal Year 2021/2022 and prior Fiscal Years are summarized in the table below. Based on the Foreclosure Covenant outlined in the 2016 FAA and the current delinquency rates, no parcel exceeds the foreclosure threshold. A detailed listing of the Fiscal Year 2021/2022 Delinquent Annual Special Taxes, based on the year end collections and information regarding the Foreclosure Covenants is provided as Exhibit E.

CFD No. 2002-1 Annual Special Tax Collections and Delinquencies

Fiscal Year	Subject Fiscal Year					June 30, 2022	
	Aggregate Special Tax	Parcels Delinquent	Amount Collected	Amount Delinquent	Delinquency Rate	Remaining Amount Delinquent	Remaining Delinquency Rate
2017/2018	\$265,062.00	5	\$261,969.61	\$3,092.39	1.17%	\$0.00	0.00%
2018/2019	265,062.00	3	263,294.92	1,767.08	0.67%	0.00	0.00%
2019/2020	265,062.00	2	263,294.92	1,767.08	0.67%	0.00	0.00%
2020/2021	265,062.00	3	263,294.92	1,767.08	0.67%	441.77	0.17%
2021/2022	265,062.00	2	263,294.92	1,767.08	0.67%	1,767.08	0.67%

III. Fund and Account Activity and Balances

Special Taxes are collected by the County Tax Collector as part of the regular property tax bills. Once received by the County Tax Collector the Special Taxes are transferred to the School District where they are then deposited into the Special Tax Fund held with the Fiscal Agent. Special Taxes are periodically transferred to make debt service payments on the 2016 Bonds and pay other authorized costs. This Section summarizes the account activity and balances of the funds and accounts associated with CFD No. 2002-1.

A. Fiscal Agent Accounts

Funds and accounts associated with the 2016 Bonds are currently being held by the Fiscal Agent. These funds and accounts were established pursuant to the 2016 FAA, dated July 1, 2016, between the School District and the Fiscal Agent and executed in association with the 2016 Bonds.

The balances, as of June 30, 2022, of the funds, accounts and subaccounts by the Fiscal Agent are listed in the following table. Exhibit F contains a detailed listing of the transactions within these funds for Fiscal Year 2021/2022.

**Fund and Account Balances
as of June 30, 2022**

Account Name	Account Number	Balance
Special Tax Fund	5905257A	\$239,599.46
Bond Fund	5905257B	0.12
Improvement Fund	5905257E	0.02
Special Tax Remainder Account	5905257R	0.88
Administrative Expense Fund	5905257I	18,001.94
Total		\$257,602.42

B. Sources and Uses of Funds

The sources and uses of funds collected and expended by CFD No. 2002-1 are limited based on the restrictions as described within the 2016 FAA. The table below presents the sources and uses of all funds and accounts for CFD No. 2002-1 from July 1, 2021 through June 30, 2022. For a more detailed description of the sources and uses of funds please refer to the 2016 FAA.

Fiscal Year 2021/2022 Sources and Uses of Funds

Sources	
Bond Proceeds	\$0.00
Annual Special Tax Receipts	262,885.52
Transfer from the 2016 PFA Surplus Fund	16,698.05
Investment Earnings	34.98
Total	\$279,618.55
Uses	
Interest Payments	(\$96,162.50)
Principal Payments	(135,000.00)
Transfer to the CFD Project Fund Custody	(44,462.49)
Authorized Facilities	0.00
Administrative Expenses	(12,368.84)
Total	(\$287,993.83)

IV. Senate Bill 165

Senate Bill 165, or the Local Agency Special Tax and Bond Accountability Act (“SB 165”), requires any local special tax/local bond measure subject to voter approval contain a statement indicating the specific purposes of the Special Tax, require that the proceeds of the Special Tax be applied to those purposes, require the creation of an account into which the proceeds shall be deposited, and require an annual report containing specified information concerning the use of the proceeds. SB 165 only applies to CFDs authorized on or after January 1, 2001 in accordance with Sections 50075.1 and 53410 of the California Government Code.

A. Authorized Facilities

Pursuant to the Mello-Roos Community Facilities Act of 1982, as Amended (“Act”), CFD No. 2002-1 can only be used to fund the “Authorized Facilities” as outlined at the time of formation. The following is an excerpt taken from the ROI to establish CFD No. 2002-1 which describes the Authorized Facilities.

The types of Facilities proposed to be financed by Community Facilities District No. 2002-1 (CFD) of the Murrieta Valley Unified School District (District) under the Mello-Roos Community Facilities Act of 1982, as amended (the Act) are as follows:

“Facilities” means those K-12 school sites, school facilities, including classrooms, on-site office space at a school, central support and administrative facilities, interim housing, furniture, equipment, technology, busses, and transportation facilities needed by District in order to serve the student population to be generated as a result of development of the property within the CFD, and also includes any of the following: 1) Murrieta County Water District (MCWD) sewer connection fees and MWD annexation fees; and 2) City of Murrieta (City) road and bridge fees, habitat fees and area drainage fees which will be used for

road construction, sewer drainage construction and habitat restoration.

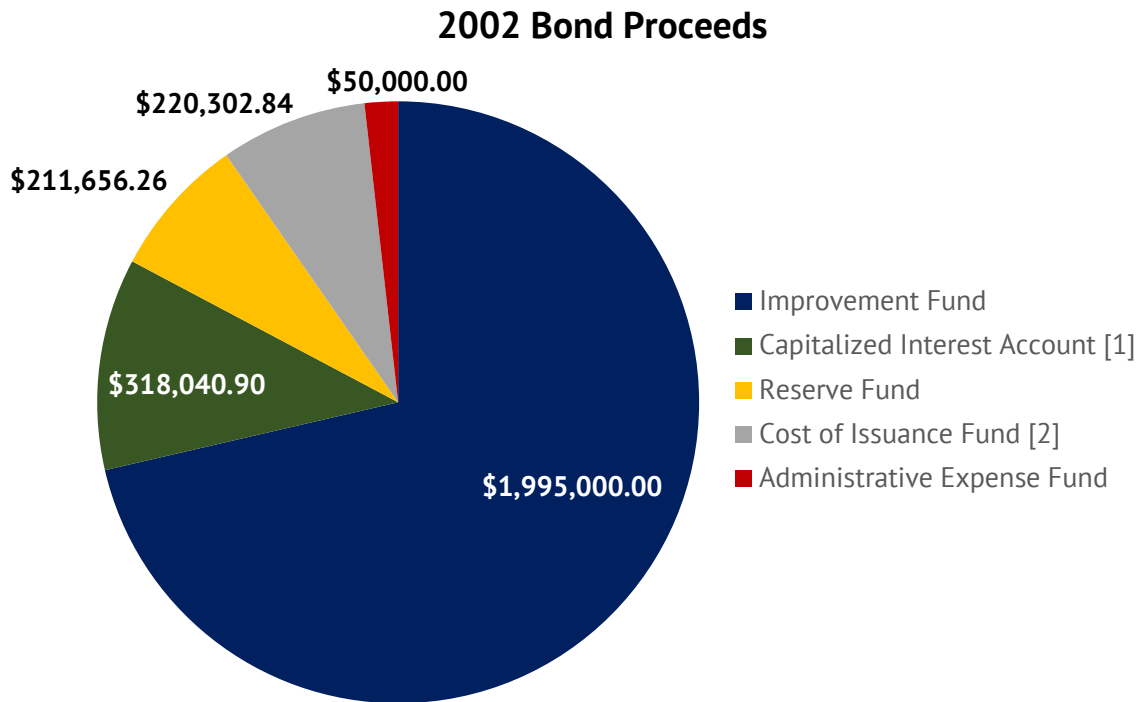
“Facilities” shall also include the attributable costs of engineering, design, planning, materials testing, coordination, construction staking, and construction, together with the expenses related to issuance and sale of any “debt”, as defined in Section 53317(d) of the Act, including underwriters discount, appraisals, market studies, reserve fund, capitalized interest, bond counsel, special tax consultant, bond and official statement printing, administrative expenses of the District, the CFD and bond trustee or fiscal agent related to the CFD, and any such debt and all other incidental expenses. The Facilities shall be constructed, whether or not acquired in their completed states, pursuant to plans and specifications approved by the District.

The Facilities listed in this Exhibit A are representative of the types of improvements to be furnished by the CFD. Detailed scope and limits of specific projects will be determined as appropriate, consistent with the standards of the District. Addition, deletion or modification of descriptions of Facilities may be made consistent with the requirements of the Board of Education of the District, the CFD and the Act.

B. 2002 Special Tax Bonds

1. Bond Proceeds

In accordance with the 2002 FAA for the 2002 Bonds, the total bond proceeds of \$2,795,000 were deposited into the funds and accounts as shown in the graph below.



[1] Represents interest on the 2002 Bonds through March 1, 2004.

[2] This amount includes the Underwriter's Discount of \$64,403.90. The actual amount deposited into the Cost of Issuance Fund was \$155,898.94.

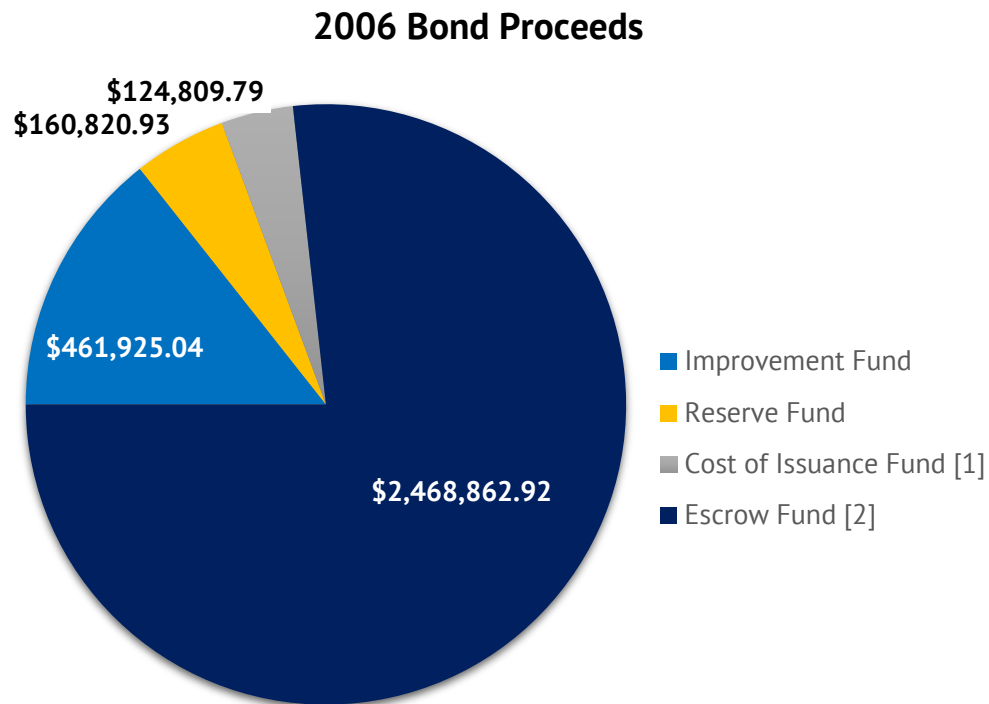
2. Construction Funds and Accounts

All construction/acquisition accounts containing 2002 Bond proceeds were closed and all funds expended. For an accounting of accruals and expenditures within these accounts please refer to the Administration Reports for CFD No. 2002-1 for prior years.

C. 2006 Special Tax Refunding Bonds

Bond Proceeds

In accordance with the 2006 FAA for the 2006 Bonds, the total bond proceeds of \$3,216,418.68 were deposited into the funds and accounts as shown in the graph below.



[1] This amount includes the Underwriter's discount of \$76,853.57 and excludes the Original Issue Premium of \$5,391.66. The actual amount deposited in the Costs of Issuance Fund was \$53,347.88.

[2] This amount excludes the transfer of funds on hand from the 2002 Bonds of \$383,848.21.

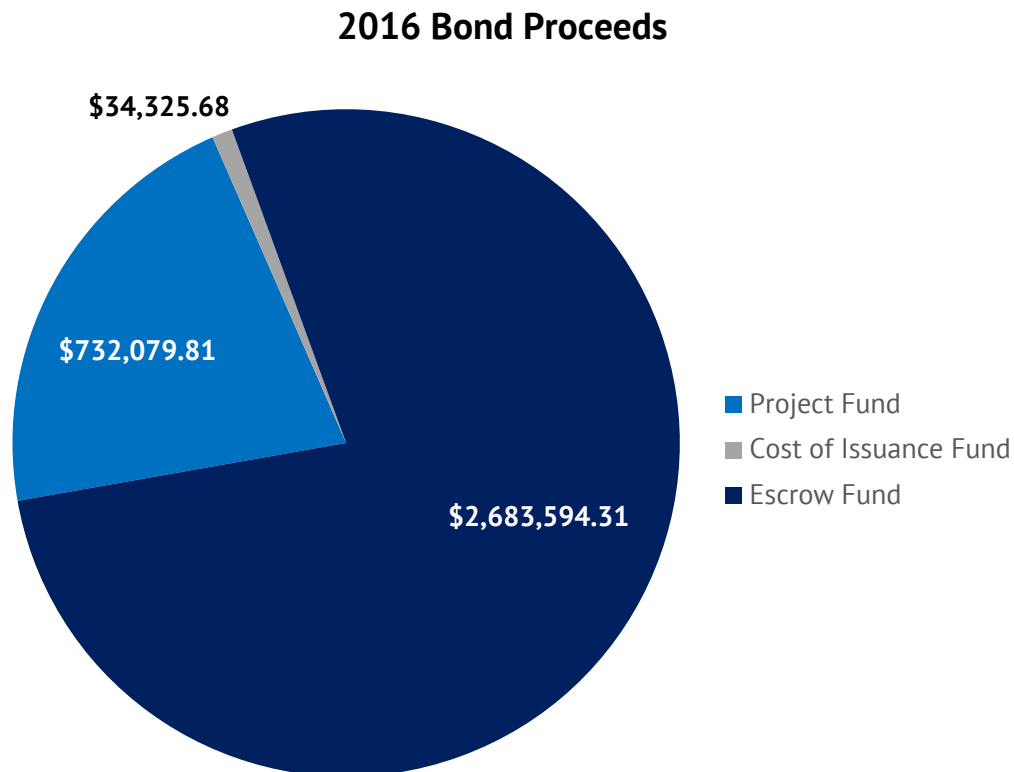
2. Construction Funds and Accounts

All construction/acquisition accounts containing 2006 Bond proceeds were closed and all funds expended. For an accounting of accruals and expenditures within these accounts please refer to the Administration Reports for CFD No. 2002-1 for prior years.

D. Series 2016 Special Tax Refunding

Bond Proceeds

In accordance with the 2016 FAA for the 2016 Bonds, the total bond proceeds of \$3,450,000 were deposited into the funds and accounts as shown in the graph below.



2. Construction Funds and Accounts

The table on the following page presents a detailed listing of the accruals and expenditures in the 2016 construction/acquisition account of CFD No. 2002-1 from July 20, 2016 through June 30, 2022, for the Authorized Facilities.

2016 Improvement Fund

Initial Deposits from the 2016 Bond Proceeds		\$732,079.81
Previously Accrued	\$9,802.26	
Previously Expended	(741,882.05)	
Balance as of July 1, 2021		\$0.02
Accruals		\$0.00
Investment Earnings	\$0.00	
Expenditures		\$0.00
Authorized Facilities	\$0.00	
Balance as of June 30, 2022		\$0.02

E. Special Taxes

CFD No. 2002-1 has covenanted to levy the Annual Special Taxes in accordance with the RMA. The Annual Special Taxes collected can only be used for the purposes as outlined in the 2016 FAA. As of October 2016, all Special Tax accounts related to the 2006 Bond issuance were closed and all funds expended. For an accounting of accruals and expenditures within these accounts please refer to the Administration Reports of CFD No. 2002-1 prior years. The table below presents a detailed accounting of the Annual Special Taxes collected and expended by CFD No. 2002-1 within the Special Tax Fund created under the Fiscal Agent Agreement of the 2016 Bonds.

Special Tax Fund (2016 Bonds)

Balance as of July 20, 2016		\$0.00
Previously Accrued	\$1,668,679.60	
Previously Expended	(1,433,068.57)	
Balance as of July 1, 2021		\$235,611.03
Accruals		\$279,613.42
Special Tax Deposits	\$262,885.52	
Transfer from 2016 PFA Surplus Revenue Fund	16,698.05	
Investment Earnings	29.85	
Expenditures		(\$275,624.99)
Transfer to Bond Fund	(\$231,162.50)	
Transfer to Special Tax Remainder Fund	(44,462.49)	
Balance as of June 30, 2022		\$239,599.46

Special Taxes collected in excess of annual debt service obligations of the 2016 Bonds are transferred to the 2016 Special Tax Remainder Account to be held and utilized for the construction of Authorized Facilities. The following table presents a detailed listing of the Annual Special Taxes collected and expended by CFD No. 2002-1 within the 2016 Special Tax Remainder Fund.

Special Tax Remainder Fund (2016 Bonds)

Balance as of July 20, 2016		\$0.00
Previously Accrued	\$170,565.60	
Previously Expended	(170,564.72)	
Balance as of July 1, 2021		\$0.88
Accruals		\$44,462.49
Transfer from Special Tax Fund	\$44,462.49	
Expenditures		(\$44,462.49)
Transfer to CFD Project Fund Custody	(\$44,462.49)	
Balance as of June 30, 2022		\$0.88

Special Taxes collected in excess of annual debt service obligations of the 2006 Bonds were transferred to the School District to be held and utilized for the construction of Authorized Facilities. This fund has since been closed and all funds expended. For an accounting of accruals and expenditures within this account, please refer to the Administration Reports of CFD No. 2002-1 for prior years.

F. Pooled Special Tax Accounts

On April 30, 2009 the School District issued the Certificates of Participation (2009 School Facility Bridge Funding Program) in the amount of \$56,000,000 (“2009 COPs”). The proceeds of the 2009 COPs were used to complete improvements at Dorothy McElhinney Middle School and Murrieta Mesa High School (“2009 Projects”). On September 1, 2011 all but \$14,300,000 of the 2009 COPs were prepaid with a portion of the funds received from the State of California for the 2009 Projects. The remaining State funds were budgeted to be used to i) purchase and install solar panels at several school sites, ii) purchase several Compressed Natural Gas (“CNG”) fueled buses, and iii) install a CNG fueling station (“Energy Projects”). On December 8, 2016 the Refunding Certificates of Participation, Series 2016 (“2016 COPs”, collectively, with the 2009 COPs the “COPs”) were issued in the amount of \$19,405,000 to (i) prepay, on an advance basis, the 2009 COPs, (ii) finance a portion of the costs of replacing, upgrading, and installing certain technology infrastructure projects, including data cabling, electrical and associated equipment, and (iii) pay the costs incurred in connection with the execution and delivery of the 2016 COPs.

As of December 2016, the Sinking Fund Account was closed, and all funds expended. For an accounting of accruals and expenditures within this account, please refer to the Administration Reports for CFD No. 2002-1 in Fiscal Year prior years. Special Taxes remaining after all individual obligations are paid are being used to make Lease Payments on the 2016 COPs and fund projects within the authorized facilities of each participating CFD. The pooled CFD Project Fund Custody Account collects the initial transfers of remaining Special Taxes from the participating CFDs and such funds are then either transferred to the 2016 COPs Custody Account to make Lease Payments on the 2016 COPs or are utilized to fund authorized facilities.

The table on the following page presents a detailed listing of the sources and uses of CFD Special Taxes associated with the pooled CFD Project Fund Custody Account through June 30, 2022.

The table below presents a detailed listing of the sources and uses of CFD Special Taxes associated with the pooled CFD Project Fund Custody Account through June 30, 2022.

Pooled CFD Project Fund Custody Account

Balance as of April 30, 2012		\$0.00
Previously Accrued	\$12,185,595.70	
Previously Expended	(10,577,896.44)	
Balance as of July 1, 2021		\$1,607,699.26
Accruals		\$3,105,071.76
Investment Earnings	\$948.03	
Transfer from CFD No. 90-1 Special Tax Fund	247,025.41	
Transfer from CFD No. 98-1 Special Tax Fund	253,378.50	
Transfer from CFD No. 98-2 Special Tax Fund	131,892.43	
Transfer from CFD No. 98-3 Special Tax Fund	191,531.82	
Transfer from CFD No. 99-1 IA A Special Tax Remainder Fund	148,381.80	
Transfer from CFD No. 99-1 IA B Special Tax Remainder Fund	77,092.67	
Transfer from CFD No. 2000-1 Special Tax Remainder Fund	127,031.49	
Transfer from CFD No. 2000-2 Special Tax Remainder Fund	136,056.94	
Transfer from CFD No. 2001-1 Special Tax Remainder Fund	42,130.85	
Transfer from CFD No. 2001-2 Special Tax Fund	141,097.49	
Transfer from CFD No. 2001-4 Special Tax Remainder Fund	81,089.29	
Transfer from CFD No. 2002-1 Special Tax Remainder Fund	44,462.49	
Transfer from CFD No. 2002-2 Special Tax Remainder Fund	29,917.29	
Transfer from CFD No. 2002-3 Special Tax Remainder Fund	46,366.52	
Transfer from CFD No. 2002-4 IA A Special Tax Fund	64,530.95	
Transfer from CFD No. 2002-4 IA B Special Tax Fund	77,940.93	
Transfer from CFD No. 2002-5 IA A Special Tax Fund	241,062.79	
Transfer from CFD No. 2005-IA B Special Tax Remainder Fund	157,871.59	
Transfer from CFD No. 2003-1 Special Tax Remainder Fund	43,296.56	
Transfer from CFD No. 2003-2 Special Tax Remainder Fund	32,581.86	
Transfer from CFD No. 2003-3 2013 Special Tax Fund	34,326.61	
Transfer from CFD No. 2003-4 Special Tax Fund	90,828.88	
Transfer from CFD No. 2004-1 Special Tax Fund	38,677.07	
Transfer from CFD No. 2006-1 IA A Special Tax Remainder Fund	65,220.87	
Transfer from CFD No. 2006-1 IA B Special Tax Remainder Fund	83,235.50	
Transfer from CFD No. 2006-1 IA C Special Tax Remainder Fund	174,552.76	
Transfer from CFD No. 2014-1 Special Tax Fund	48,922.50	
Transfer from CFD No. 2014-2 Special Tax Fund	26,782.02	
Transfer from CFD No. 2014-3 Special Tax Fund	33,416.26	
Transfer from CFD No. 2014-1 Custody Account	3,122.89	
Transfer from CFD No. 2014-4 Custody Account	190,298.70	
Transfer from CFD No. 2018-1 Custody Account	42,545.18	
Expenditures		(\$822,697.44)
Transfer to 2016 COPs Custody Account	(\$822,697.44)	
Balance as of June 30, 2022		\$3,890,073.58

The table below presents a detailed listing of the sources and uses of the 2016 COPs Custody Account through June 30, 2022.

2016 COPs Custody Account

Balance as of December 8, 2016		\$0.00
Previously Accrued	\$4,403,338.09	
Previously Expended	(4,117,846.63)	
Balance as of July 1, 2021		\$285,491.46
Accruals		\$822,784.65
Investment Earnings	\$87.21	
Transfer from CFD Project Fund	822,697.44	
Expenditures		(\$775,462.52)
Administrative Expenses	(\$2,000.00)	
Transfer to 2016 COP Base Rental Fund	(773,462.52)	
Balance as of June 30, 2022		\$332,813.59

V. Minimum Annual Special Tax Requirement

This Section outlines the calculation of the Minimum Annual Special Tax Requirement of CFD No. 2002-1 based on the financial obligations for Fiscal Year 2022/2023.

A. Minimum Annual Special Tax Requirement

The Annual Special Taxes of CFD No. 2002-1 are calculated in accordance and pursuant to the RMA. Pursuant to the FAA, any amounts not required to pay Administrative Expenses and Debt Service on the 2016 Bonds may be used to purchase/construct the Authorized Facilities of CFD No. 2002-1. The table below shows the calculation of the Minimum Annual Special Tax Requirement for Fiscal Year 2022/2023.

Minimum Annual Special Tax Requirement for CFD No. 2002-1	
Fiscal Year 2021/2022 Remaining Sources	\$242,924.62
Balance of Special Tax Fund	\$239,599.46
Balance of Bond Fund	0.12
Anticipated Special Taxes	3,325.04
Fiscal Year 2021/2022 Remaining Obligations	(\$216,418.42)
September 1, 2022 Interest Payment	(\$46,900.00)
September 1, 2022 Principal Payment	(140,000.00)
2016 COPs Contribution	(29,518.42)
Fiscal Year 2021/2022 Surplus (Reserve Fund Draw)	\$26,506.20
Fiscal Year 2022/2023 Obligations	(\$291,568.20)
Administrative Expense Budget	(\$25,000.00)
Anticipated Special Tax Delinquencies ^[1]	(26,506.20)
March 1, 2023 Interest Payment	(44,450.00)
September 1, 2023 Interest Payment	(44,450.00)
September 1, 2023 Principal Payment	(145,000.00)
2016 COPs Contribution	(6,162.00)
Fiscal Year 2022/2023 Minimum Annual Special Tax Requirement	\$265,062.00

[1] The budget for anticipated delinquencies has been increased by withholding a portion of the 2022/2023 Special Tax levy. This has been done to protect the payment of the 2016 COPs Contribution.

B. Administrative Expense Budget

Each year a portion of the Annual Special Tax levy is used to pay for the administrative expenses incurred by the School District to levy the Annual Special Tax and administer the debt issued to finance Authorized Facilities. The estimated Fiscal Year 2022/2023 Administrative Expenses are shown in the table below.

Fiscal Year 2022/2023 Budgeted Administrative Expenses

Administrative Expense	Budget
District Staff and Expenses	\$2,803.83
Consultant/Trustee Expenses	17,000.00
County Tax Collection Fees	196.17
Contingency for Legal	5,000.00
Total Expenses	\$25,000.00

VI. Special Tax Classification

Each Fiscal Year, parcels within CFD No. 2002-1 are assigned an Annual Special Tax classification based on the parameters outlined in the RMA. This Section outlines how parcels are classified and the amount of Taxable Property within CFD No. 2002-1.

A. Developed Property

Building Permits have been issued for 300 Units by the City within CFD No. 2002-1. According to the County Assessor, all property zoned for residential development within CFD No. 2002-1 has been built and completed. The table below summarizes the Special Tax classification for the Units within CFD No. 2002-1.

**Fiscal Year 2022/2023
Special Tax Classification**

Property Classification	Number of Units/Acres
Developed Property	300 Units
Undeveloped Property	0.00 Acres
Total	300 Units

VII. Fiscal Year 2022/2023 Special Tax Levy

Each Fiscal Year, the Special Tax is levied up to the maximum rate, as determined by the provisions of the RMA, in the amount needed to satisfy the Minimum Annual Special Tax Requirement.

Based on the Minimum Annual Special Tax Requirement listed in Section V, CFD No. 2002-1 will levy at the Assigned Annual Special Tax rate allowable for each parcel classified as Developed Property. The special tax roll, containing a listing of each parcel's Assigned Special Tax and Maximum Special Tax, calculated pursuant to the RMA, can be found attached as Exhibit G.

A summary of the Annual Special Tax levy for Fiscal Year 2022/2023 by Special Tax classification as determined by the RMA for CFD No. 2002-1 can be found on the table below.

Fiscal Year 2022/2023 Annual Special Tax Levy

Property Classification	Number of Units/Acres	Assigned Annual Special Tax Rate	Total Assigned Annual Special Taxes
Developed Property	300 Units	\$883.54 Per Unit	\$265,062.00
Undeveloped Property	0.00 Acres	\$0.00 Per Acre	0.00
Total	300 Units		\$265,062.00

https://calschools.sharepoint.com/cfs/unregulated/murrieta_valley_usd/developer_revenue/cfd_admin/cfd_no.2002-1/fy2223/murrieta_valley_usd_cfd2002-1_fy20222023_specialtaxreport_d1.docx

Exhibit A

Rate and Method of Apportionment

November 26, 2001

**RATE AND METHOD OF APPORTIONMENT FOR
COMMUNITY FACILITIES DISTRICT NO. 2002-1
OF MURRIETA VALLEY UNIFIED SCHOOL DISTRICT**

The following sets forth the Rate and Method of Apportionment for the levy and collection of Special Taxes of Murrieta Valley Unified School District ("School District") Community Facilities District No. 2002-1 ("CFD No. 2002-1"). An Annual Special Tax shall be levied on and collected in CFD No. 2002-1 each Fiscal Year, in an amount determined through the application of the Rate and Method of Apportionment described below. All of the real property in CFD No. 2002-1, unless exempted by law or by the provisions hereof, shall be taxed for the purposes, to the extent, and in the manner herein provided.

**SECTION A
DEFINITIONS**

The terms hereinafter set forth have the following meanings:

"Acreage" means the land area of an Assessor's Parcel as shown on an Assessor's Parcel Map or as calculated from the applicable Assessor's Parcel Map by the Board.

"Act" means the Mello-Roos Communities Facilities Act of 1982 as amended, being Chapter 2.5, Division 2 of Title 5 of the Government Code of the State of California.

"Administrative Expenses" means any ordinary and necessary expense incurred by the School District on behalf of CFD No. 2002-1 related to the determination of the amount of the levy of Special Taxes, the collection of Special Taxes including the expenses of collecting delinquencies, the administration of Bonds, the payment of salaries and benefits of any School District employee whose duties are directly related to the administration of CFD No. 2002-1, and costs otherwise incurred in order to carry out the authorized purposes of CFD No. 2002-1.

"Annual Special Tax" means the Special Tax actually levied in any Fiscal Year on any Assessor's Parcel.

"Assessor's Parcel" means a lot or parcel of land designated on an Assessor's Parcel Map with an assigned Assessor's Parcel Number within the boundaries of CFD No. 2002-1.

"Assessor's Parcel Map" means an official map of the Assessor of the County designating parcels by Assessor's Parcel Number.

"Assessor's Parcel Number" means that number assigned to an Assessor's Parcel by the County for purposes of identification.

"Assigned Annual Special Tax" means the Special Tax of that name described in Section D below.

"Backup Annual Special Tax" means the Special Tax of that name described in Section E below.

"Board" means the Board of Education of Murrieta Valley Unified School District or its designee as the legislative body of CFD No. 2002-1.

"Bonds" means any obligation to repay a sum of money, including obligations in the form of bonds, notes, certificates of participation, long-term leases, loans from government agencies, or loans from banks, other financial institutions, private businesses, or individuals, or long-term contracts, or any refunding thereof, which obligation may be incurred by CFD No. 2002-1 or the School District.

"Building Permit" means a permit for the construction of one or more Units. For purposes of this definition, "Building Permit" shall not include permits for construction or installation of commercial/industrial structures, parking structures, retaining walls, utility improvements, or other such improvements not intended for human habitation.

"Calendar Year" means the period commencing January 1 of any year and ending the following December 31.

"CFD No. 2002-1" means Community Facilities District No. 2002-1 established by the School District under the Act.

"County" means the County of Riverside.

"Developed Property" means all Assessor's Parcels for which Building Permits were issued on or before May 1 of the prior Fiscal Year, provided that such Assessor's Parcels were created on or before January 1 of the prior Fiscal Year and that each such Assessor's Parcel is associated with a Lot, as determined reasonably by the Board.

"Exempt Property" means all Assessor's Parcels designated as being exempt from Special Taxes in Section J.

"Final Map" means a final tract map, parcel map, lot line adjustment, or functionally equivalent map or instrument that creates building sites, recorded in the County Office of the Recorder.

"Fiscal Year" means the period commencing on July 1 of any year and ending the following June 30.

"Gross Prepayment Amount" means the Prepayment Amount for an Assessor's Parcel prior to Bonds being issued by CFD No. 2002-1, as determined in accordance with Section G.

"Lot" means an individual legal lot created by a Final Map for which a Building Permit could be issued.

"Maximum Special Tax" means the maximum Special Tax, determined in accordance with Section C, that can be levied by CFD No. 2002-1 in any Fiscal Year on any Assessor's Parcel.

"Minimum Annual Special Tax Requirement" means the amount required in any Fiscal Year to pay: (i) the debt service on all outstanding Bonds, other indebtedness, lease revenue financing, or other periodic costs on all outstanding Bonds or other indebtedness of CFD No. 2002-1, (ii) Administrative Expenses of CFD No. 2002-1, (iii) the costs associated with the release of funds from an escrow account, and (iv) any amount required to establish or replenish any reserve funds established in association with the Bonds or

other indebtedness of CFD No. 2002-1, less (v) reserve fund earnings in excess of the reserve fund requirement which are not allocable to rebatable arbitrage.

"Partial Prepayment Amount" means the amount required to prepay a portion of the Annual Special Tax obligation for an Assessor's Parcel, as described in Section H.

"Prepayment Amount" means the amount required to prepay the Annual Special Tax obligation in full for an Assessor's Parcel, as described in Section G.

"Proportionately" means that the ratio of the actual Annual Special Tax levy to the applicable Special Tax is equal for all applicable Assessor's Parcels.

"Special Tax" means any of the special taxes authorized to be levied by CFD No. 2002-1 pursuant to the Act.

"Taxable Property" means all Assessor's Parcels which are not Exempt Property.

"Undeveloped Property" means all Assessor's Parcels of Taxable Property which are not Developed Property.

"Unit" means each separate residential dwelling unit which comprises an independent facility capable of conveyance separate from adjacent residential dwelling units.

SECTION B CLASSIFICATION OF ASSESSOR'S PARCELS

For each Fiscal Year, beginning with Fiscal Year 2002-03, each Assessor's Parcel within CFD No. 2002-1 shall be classified as Taxable Property or Exempt Property. In addition, each Fiscal Year, beginning with Fiscal Year 2002-03, each Assessor's Parcel of Taxable Property shall be further classified as Developed Property or Undeveloped Property.

SECTION C MAXIMUM SPECIAL TAXES

1. Developed Property

The Maximum Special Tax for each Assessor's Parcel classified as Developed Property in any Fiscal Year shall be the amount determined by the greater of (i) the application of the Assigned Annual Special Tax or (ii) the application of the Backup Annual Special Tax.

2. Undeveloped Property

The Maximum Special Tax for each Assessor's Parcel classified as Undeveloped Property in any Fiscal Year shall be the amount determined by the application of the Assigned Annual Special Tax.

SECTION D
ASSIGNED ANNUAL SPECIAL TAXES

1. Developed Property

The Assigned Annual Special Tax applicable to each Assessor's Parcel of Developed Property for any Fiscal Year shall be \$883.55 per Unit.

2. Undeveloped Property

The Assigned Annual Special Tax applicable to each Assessor's Parcel of Undeveloped Property for any Fiscal Year shall be \$6,153.71 per acre of Acreage.

SECTION E
BACKUP ANNUAL SPECIAL TAXES

Each Fiscal Year, each Assessor's Parcel of Developed Property shall be subject to a Backup Annual Special Tax. In each Fiscal Year, the Backup Annual Special Tax rate for Developed Property within a Final Map shall be the rate per Lot calculated according to the following formula:

$$B = \frac{U \times A}{L}$$

The terms above have the following meanings:

B	=	Backup Annual Special Tax per Lot in each Fiscal Year
U	=	Assigned Annual Special Tax per acre of Acreage for Undeveloped Property
A	=	Acreage of Taxable Property in such Final Map, as determined by the Board pursuant to Section J
L	=	Lots in the Final Map

Notwithstanding the foregoing, if all or any portion of the Final Map(s) described in the preceding paragraph is subsequently changed or modified, then the Backup Annual Special Tax for each Assessor's Parcel of Developed Property in such Final Map area that is changed or modified shall be a rate per square foot of Acreage calculated as follows:

1. Determine the total Backup Annual Special Taxes anticipated to apply to the changed or modified Final Map area prior to the change or modification.
2. The result of paragraph 1 above shall be divided by the Acreage of Taxable Property which is ultimately expected to exist in such changed or modified Final Map area, as reasonably determined by the Board.

3. The result of paragraph 2 above shall be divided by 43,560. The result is the Backup Annual Special Tax per square foot of Acreage which shall be applicable to Assessor's Parcels of Developed Property in such changed or modified Final Map area for all remaining Fiscal Years in which the Special Tax may be levied.

SECTION F METHOD OF APPORTIONMENT OF THE ANNUAL SPECIAL TAX

Commencing Fiscal Year 2002-03 and for each subsequent Fiscal Year, the Board shall levy Annual Special Taxes as follows:

- Step One: The Board shall levy an Annual Special Tax on each Assessor's Parcel of Developed Property in an amount equal to the Assigned Annual Special Tax applicable to each such Assessor's Parcel.
- Step Two: If the sum of the amounts collected in step one is insufficient to satisfy the Minimum Annual Special Tax Requirement, then the Board shall additionally levy an Annual Special Tax Proportionately on each Assessor's Parcel of Undeveloped Property, up to the Assigned Annual Special Tax applicable to each such Assessor's Parcel to satisfy the Minimum Annual Special Tax Requirement.
- Step Three: If the sum of the amounts collected in steps one and two is insufficient to satisfy the Minimum Annual Special Tax Requirement, then the Board shall additionally levy an Annual Special Tax Proportionately on each Assessor's Parcel of Developed Property, up to the Maximum Special Tax applicable to each such Assessor's Parcel to satisfy the Minimum Annual Special Tax Requirement.

SECTION G PREPAYMENT OF ANNUAL SPECIAL TAXES

The Annual Special Tax obligation of CFD No. 2002-1 for an Assessor's Parcel of Developed Property or an Assessor's Parcel of Undeveloped Property for which a Building Permit has been issued may be prepaid in full, provided that there are no delinquent Special Taxes, penalties, or interest charges outstanding with respect to such Assessor's Parcel at the time the Annual Special Tax obligation would be prepaid. The Prepayment Amount for an Assessor's Parcel eligible for prepayment shall be determined as described below.

1. Prior to Issuance of Bonds

Prior to the issuance of Bonds, the Prepayment Amount for each Assessor's Parcel of Developed Property and each Assessor's Parcel of Undeveloped Property for which a Building Permit has been issued shall be the applicable Gross Prepayment Amount. The Gross Prepayment Amount for Fiscal Year 2002-03 shall be \$6,650.00 per Unit.

2. **Subsequent to Issuance of Bonds**

Subsequent to the issuance of Bonds, the Prepayment Amount for each applicable Assessor's Parcel shall be calculated according to the following formula (capitalized terms defined below):

	Bond Redemption Amount
plus	Redemption Premium
plus	Defeasance
plus	Administrative Fee
<u>less</u>	<u>Reserve Fund Credit</u>
equals	Prepayment Amount

As of the date of prepayment, the Prepayment Amount shall be calculated as follows:

1. For Assessor's Parcels of Developed Property, compute the sum of the Assigned Annual Special Taxes and the Backup Annual Special Taxes applicable to the Assessor's Parcel. For Assessor's Parcels of Undeveloped Property, compute the sum of the Assigned Annual Special Taxes and the Backup Annual Special Taxes applicable to the Assessor's Parcel as though it was already designated as Developed Property, based upon the Building Permit issued for that Assessor's Parcel.
2. For each Assessor's Parcel of Developed Property or Undeveloped Property to be prepaid, (a) divide the sum of the Assigned Annual Special Taxes computed pursuant to paragraph 1 for such Assessor's Parcel by the sum of the estimated Assigned Annual Special Taxes applicable to all Assessor's Parcels of Developed Property at buildout, as reasonably determined by the Board, and (b) divide the sum of Backup Annual Special Tax computed pursuant to paragraph 1 for such Assessor's Parcel by the sum of the estimated Backup Annual Special Taxes applicable to all Assessor's Parcels of Developed Property at buildout, as reasonably determined by the Board.
3. The amount determined pursuant to Section G.1. shall be (a) increased by the portion of the Bonds allocable to costs of issuance, reserve fund deposits, and capitalized interest with respect to the applicable Assessor's Parcel and (b) reduced by the amount of regularly retired principal which is allocable to the applicable Assessor's Parcel, as determined by the Board. The result is the "Outstanding Gross Prepayment Amount." In no event shall any Annual Special Taxes determined to have been used to make a regularly scheduled principal payment on the Bonds be adjusted for any increase in any cost index or other basis subsequent to the date of the applicable principal payment.
4. Multiply the larger quotient computed pursuant to paragraph 2(a) or 2(b) by the face value of all outstanding Bonds. If the product is greater than the Outstanding Gross Prepayment Amount, then the product shall be the "Bond Redemption Amount." If the product is less than the Outstanding Gross Prepayment Amount, then the Outstanding Gross Prepayment Amount shall be the "Bond Redemption Amount."

5. Multiply the Bond Redemption Amount by the applicable redemption premium, if any, on the outstanding Bonds to be redeemed with the proceeds of the Bond Redemption Amount. This product is the "Redemption Premium."
6. Compute the amount needed to pay interest on the Bond Redemption Amount, the Redemption Premium, and the Reserve Fund Credit (see step 10) to be redeemed with the proceeds of the Prepayment Amount until the earliest call date for the outstanding Bonds.
7. Estimate the amount of interest earnings to be derived from the reinvestment of the Bond Redemption Amount plus the Redemption Premium until the earliest call date for the outstanding Bonds.
8. Subtract the amount computed pursuant to paragraph 7 from the amount computed pursuant to paragraph 6. This difference is the "Defeasance."
9. Estimate the administrative fees and expenses associated with the prepayment, including the costs of computation of the Prepayment Amount, the costs of redeeming Bonds, and the costs of recording any notices to evidence the prepayment and the redemption. This amount is the "Administrative Fee."
10. Calculate the "Reserve Fund Credit" as the lesser of: (a) the expected reduction in the applicable reserve requirements, if any, associated with the redemption of outstanding Bonds as a result of the prepayment, or (b) the amount derived by subtracting the new reserve requirements in effect after the redemption of outstanding Bonds as a result of the prepayment from the balance in the applicable reserve funds on the prepayment date. Notwithstanding the foregoing, if the reserve fund requirement is satisfied by a surety bond or other instrument at the time of the prepayment, then no Reserve Fund Credit shall be given. Notwithstanding the foregoing, the Reserve Fund Credit shall in no event be less than 0.
11. The Prepayment Amount is equal to the sum of the Bond Redemption Amount, the Redemption Premium, the Defeasance, and the Administrative Fee, less the Reserve Fund Credit.

With respect to an Annual Special Tax obligation that is prepaid pursuant to this Section G, the Board shall indicate in the records of CFD No. 2002-1 that there has been a prepayment of the Special Tax obligation and shall cause a suitable notice to be recorded in compliance with the Act within thirty (30) days of receipt of such prepayment to indicate the prepayment of the Special Tax obligation and the release of the Special Tax lien on such Assessor's Parcel, and the obligation of such Assessor's Parcel to pay such Special Taxes shall cease.

Notwithstanding the foregoing, no prepayment will be allowed unless the amount of Special Taxes that may be levied on Taxable Property, net of Administrative Expenses, shall be at least 1.1 times the regularly scheduled annual interest and principal payments on all currently outstanding Bonds in each future Fiscal Year, as reasonably determined by the Board.

SECTION H

PARTIAL PREPAYMENT OF ANNUAL SPECIAL TAXES

The Annual Special Tax obligation of an Assessor's Parcel may be partially prepaid at the times and under the conditions set forth in this section, provided that there are no delinquent Special Taxes, penalties, or interest charges outstanding with respect to such Assessor's Parcel at the time the Annual Special Tax obligation would be prepaid.

1. Partial Prepayment Times and Conditions

Prior to the issuance of the first Building Permit for the construction of a production Unit on a Lot within a Final Map area, the owner of no less than all the Taxable Property within such Final Map area may elect in writing to the Board to prepay a portion of the Annual Special Tax obligations for all the Assessor's Parcels within such Final Map area, as calculated in Section H.2. below. The partial prepayment for all Lots within a Final Map area shall be collected prior to the issuance of the first Building Permit for an Assessor's Parcel in such Final Map area.

2. Partial Prepayment Amount

The Partial Prepayment Amount shall be calculated according to the following formula:

$$PP = P_G \times F$$

The terms above have the following meanings:

PP	=	the Partial Prepayment Amount
P _G	=	the Prepayment Amount calculated according to Section G
F	=	the percent by which the owner of the Assessor's Parcel is partially prepaying the Annual Special Tax obligation

3. Partial Prepayment Procedures and Limitations

With respect to any Assessor's Parcel that is partially prepaid, the Board shall indicate in the records of CFD No. 2002-1 that there has been a partial prepayment of the Annual Special Tax obligation and shall cause a suitable notice to be recorded in compliance with the Act to indicate the partial prepayment of the Annual Special Tax obligation and the partial release of the Special Tax lien on such Assessor's Parcel, and the obligation of such Assessor's Parcel to pay such prepaid portion of the Annual Special Tax shall cease.

Notwithstanding the foregoing, no partial prepayment will be allowed unless the amount of Annual Special Taxes that may be levied on Taxable Property after such partial prepayment, net of Administrative Expenses, shall be at least 1.1 times the regularly scheduled annual interest and principal payments on all currently outstanding Bonds in each future Fiscal Year.

SECTION I TERMINATION OF SPECIAL TAX

Annual Special Taxes shall be levied for a period of thirty-three (33) Fiscal Years after Bonds has been issued, as determined by the Board, provided that Annual Special Taxes shall not be levied after 2039-40.

SECTION J EXEMPTIONS

The Board shall classify as Exempt Property (i) Assessor's Parcels owned by the State of California, Federal or other local governments, (ii) Assessor's Parcels which are used as places of worship and are exempt from *ad valorem* property taxes because they are owned by a religious organization, (iii) Assessor's Parcels used exclusively by a homeowners' association, (iv) Assessor's Parcels with public or utility easements making impractical their utilization for other than the purposes set forth in the easement, or (v) other types of Assessor's Parcels, at the reasonable discussion of the Board, provided that no such classification would reduce the Acreage of all Taxable Property to less than 43.07 acres. Notwithstanding the above, the Board shall not classify an Assessor's Parcel as Exempt Property if such classification would reduce the Acreage of all Taxable Property to less than 43.07 acres.

SECTION K APPEALS

Any property owner claiming that the amount or application of the Special Tax is not correct may file a written notice of appeal with the Board not later than twelve months after having paid the first installment of the Special Tax that is disputed. A representative(s) of CFD No. 2002-1 shall promptly review the appeal, and if necessary, meet with the property owner, consider written and oral evidence regarding the amount of the Special Tax, and rule on the appeal. If the representative's decision requires that the Special Tax for an Assessor's Parcel be modified or changed in favor of the property owner, a cash refund shall not be made (except for the last year of levy), but an adjustment shall be made to the Annual Special Tax on that Assessor's Parcel in the subsequent Fiscal Year(s).

SECTION L MANNER OF COLLECTION

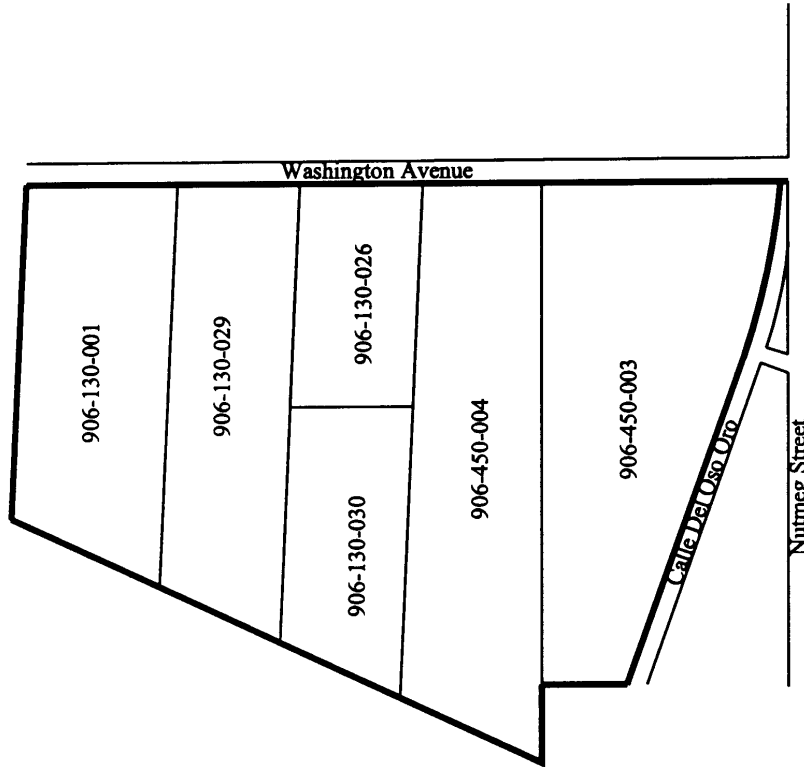
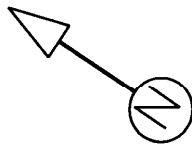
The Annual Special Tax shall be collected in the same manner and at the same time as ordinary *ad valorem* property taxes, provided, however, that CFD No. 2002-1 may collect Annual Special Taxes at a different time or in a different manner if necessary to meet its financial obligations.

K:\CLIENTS2\MURR_VAL.USD\MELLOLYON2\MA2.DOC

Exhibit B

CFD Boundary Map

PROPOSED BOUNDARIES OF
MURRIETA VALLEY UNIFIED SCHOOL DISTRICT
COMMUNITY FACILITIES DISTRICT NO. 2002-1
RIVERSIDE COUNTY
STATE OF CALIFORNIA



Reference is hereby made to the Assessor maps of the County of Riverside for an exact description of the lines and dimensions of each lot and parcel.

(1) Filed in the office of the Clerk of the Board of Education this 13th day of December 2001.

[Signature]
Clerk of the Board of Education

(2) I hereby certify that the within map showing the proposed boundaries of Community Facilities District No. 2002-1, Riverside County, State of California, was approved by the Board of Education at a regular meeting thereof, held on this 13th day of December, 2001, by its Resolution No. 01/02-21.

[Signature]
Clerk of the Board of Education

(3) Filed this 13th day of Dec. 2001, at the hour of 2:00 p.m. in Book 50 of Maps of Assessment and Community Facilities Districts of page 45 and as Instrument No. 2001-2219 in the office of the County Recorder of Riverside County, State of California.

[Signature]
County Recorder of Riverside County

LEGEND

Boundaries of Community
Facilities District No. 2002-1
Assessor Parcel Boundaries
nnn-nnn-nnn Assessor Parcel Number

PREPARED BY
DAVID TAUSSIG & ASSOCIATES, INC.

Exhibit C

Assessor's Parcel Maps

906-13
20-5

T.R.A. 024-082

SHEET 2 OF 2

THIS MAP WAS PREPARED FOR ASSESSMENT PURPOSES ONLY. NO LIABILITY IS ASSUMED FOR THE ACCURACY OF THE DATA SHOWN. ASSESSOR'S PARCEL MAY NOT COMPLY WITH LOCAL LOT-SPLIT OR BUILDING SITE ORDINANCES.

SEC. 12 13 T. 7S. R. 4W
SEC. 18 7 T. 7S. R. 3W
CITY OF MURRIETA

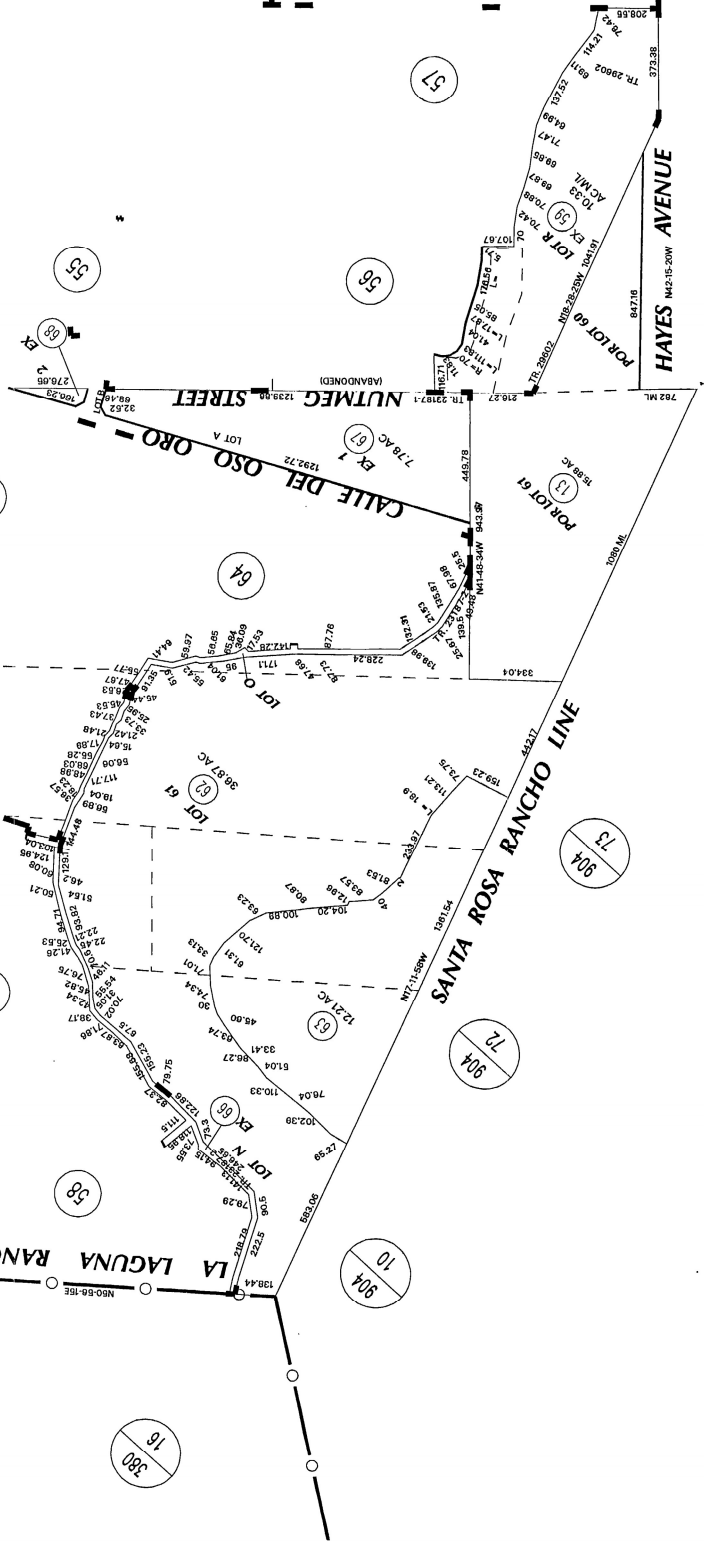
WASHINGTON AVENUE

N43-45-15W

LA LAGUNA RANCHO LINE

SANTA ROSA RANCHO LINE

HAYES AVENUE



DATE	OLD NUMBER	NEW NUMBER	DATE	OLD NUMBER	NEW NUMBER
2/2/75	6	16,11	2/2/75	6	16,11
2/2/75	5,11	12	2/2/75	5,11	12
2/2/75	9,10	13	2/2/75	9,10	13
2/2/75	8	14,15	2/2/75	8	14,15
2/2/75	7	15,16	2/2/75	7	15,16
2/2/75	15	24,25,27	2/2/75	15	24,25,27
2/2/75	3	26,27	2/2/75	3	26,27
2/2/75	2,27	28	2/2/75	2,27	28
2/2/75	28	29	2/2/75	28	29
2/2/75	16,19	31,32	2/2/75	16,19	31,32
2/2/75	14	33,34	2/2/75	14	33,34
2/2/75	20,21	34,37	2/2/75	20,21	34,37
2/2/75	34,37	38	2/2/75	34,37	38
2/2/75	38	39,40	2/2/75	38	39,40
2/2/75	40	41,42	2/2/75	40	41,42
2/2/75	41	43	2/2/75	41	43
2/2/75	43	44	2/2/75	43	44
2/2/75	44	45,46	2/2/75	44	45,46
2/2/75	45,46	47	2/2/75	45,46	47
2/2/75	47	48	2/2/75	47	48
2/2/75	48	49	2/2/75	48	49
2/2/75	49	50	2/2/75	49	50
2/2/75	50	51	2/2/75	50	51
2/2/75	51	52	2/2/75	51	52
2/2/75	52	53	2/2/75	52	53
2/2/75	53	54	2/2/75	53	54
2/2/75	54	55	2/2/75	54	55
2/2/75	55	56	2/2/75	55	56
2/2/75	56	57	2/2/75	56	57
2/2/75	57	58	2/2/75	57	58
2/2/75	58	59	2/2/75	58	59
2/2/75	59	60	2/2/75	59	60
2/2/75	60	61	2/2/75	60	61
2/2/75	61	62	2/2/75	61	62
2/2/75	62	63	2/2/75	62	63
2/2/75	63	64	2/2/75	63	64
2/2/75	64	65	2/2/75	64	65
2/2/75	65	66	2/2/75	65	66
2/2/75	66	67	2/2/75	66	67
2/2/75	67	68	2/2/75	67	68

MB 8/359 SD TEMECULA LAND & WATER COMPANY
MB 304/19-25 TRACT MAP NO 29602
MB 280/35-37 TRACT MAP NO 23187-1
MB 309/63-72 TRACT MAP NO 23187-2

DATE: 7/1/01
LJA 2231

ASSESSOR'S MAP 8K906 PG.13
Riverside County, Calif.

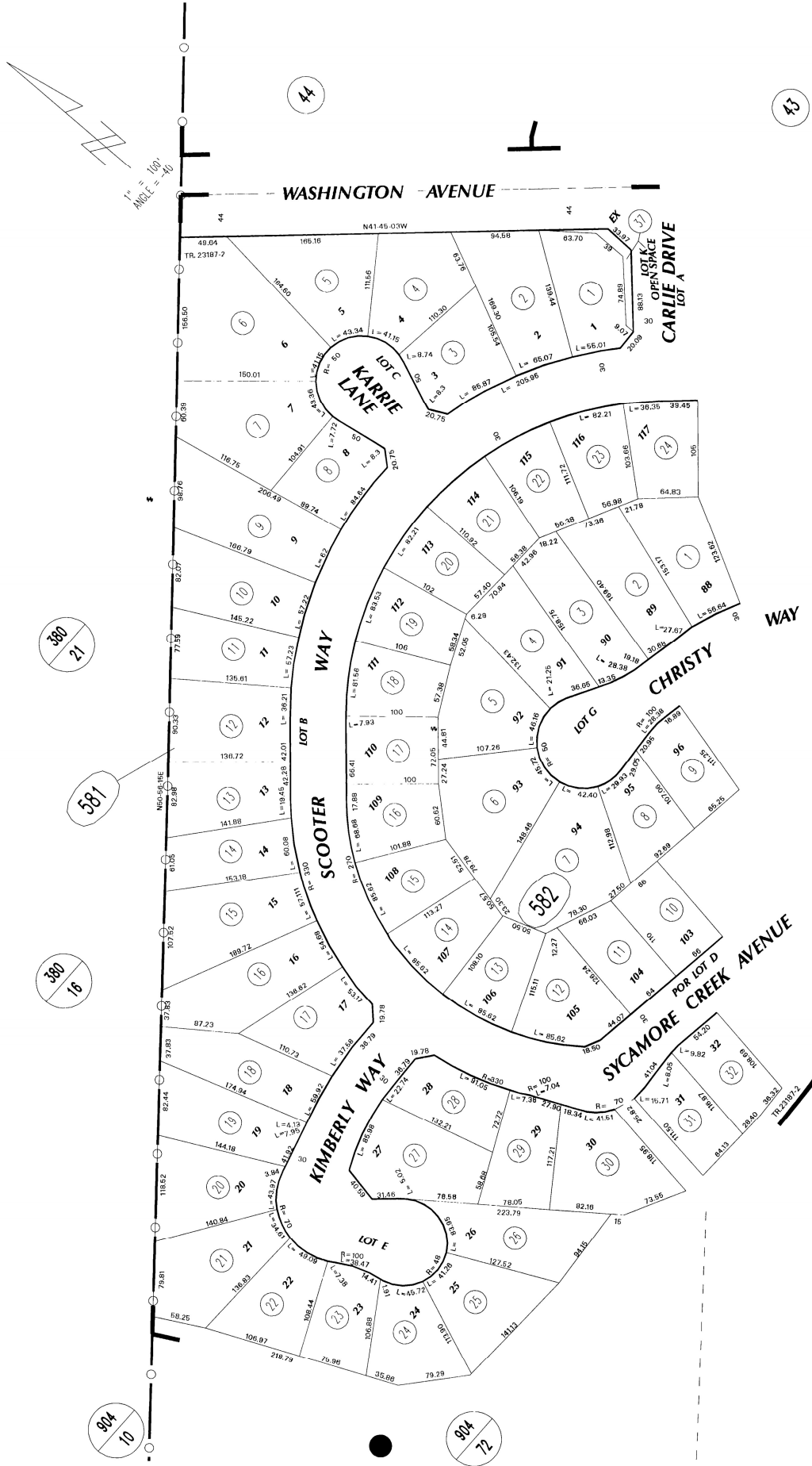
May 2003

THIS MAP WAS PREPARED FOR ASSESSMENT PURPOSES ONLY. NO LIABILITY IS ASSUMED FOR THE ACCURACY OF THE DATA SHOWN. ASSESSOR'S PARCEL MAY NOT COMPLY WITH LOCAL LOT-SPLIT OR BUILDING SITE ORDINANCES.

SEC. 12 T.7S., R.4W
POR. PROTRACTED SEC. 7 T.7S., R.3W
CITY OF MURRIETA

T.R.A. 024-082

906-58
906-13



ASSESSOR'S MAP BK906 PG.58
Riverside County, Calif.

MB 309/53-72 TRACT MAP NO. 23187-2

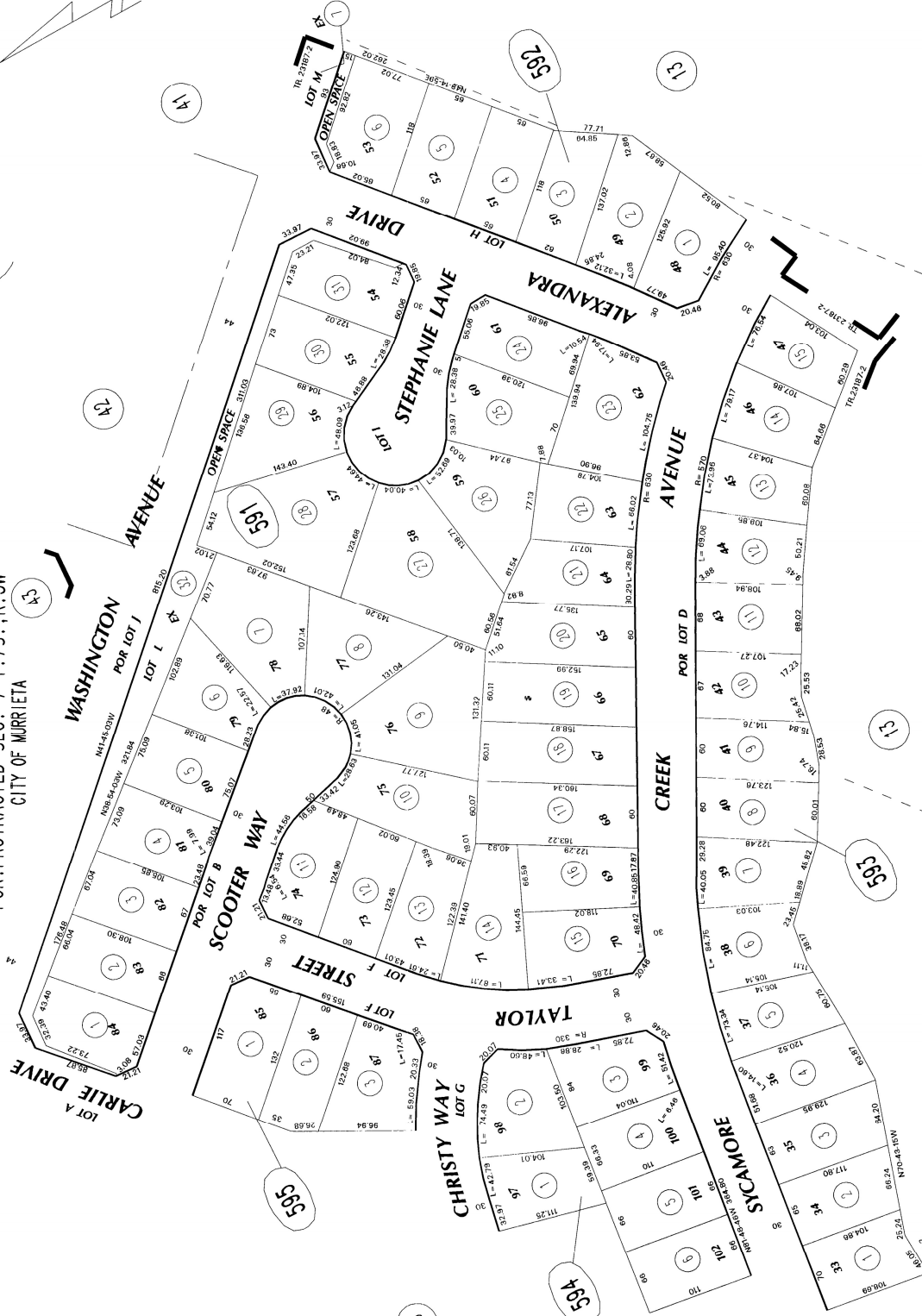
Nov 2001

THIS MAP WAS PREPARED FOR ASSESSMENT PURPOSES ONLY. NO LIABILITY IS ASSUMED FOR THE ACCURACY OF THE DATA SHOWN. ASSESSOR'S PARCEL MAY NOT COMPLY WITH LOCAL LOT-SPLIT OR BUILDING SITE ORDINANCES.

POR. PROTRACTED SEC. 12 T.7S., R.4W
 POR. PROTRACTED SEC. 7 T.7S., R.3W
 CITY OF MURRIETA

906-59
 906-13

T.R.A. 074-082



ASSESSOR'S MAP BK906 PG.59
 Riverside County, Calif.

MB 309/63-72 TRACT MAP NO. 23187-2

Nov 2001

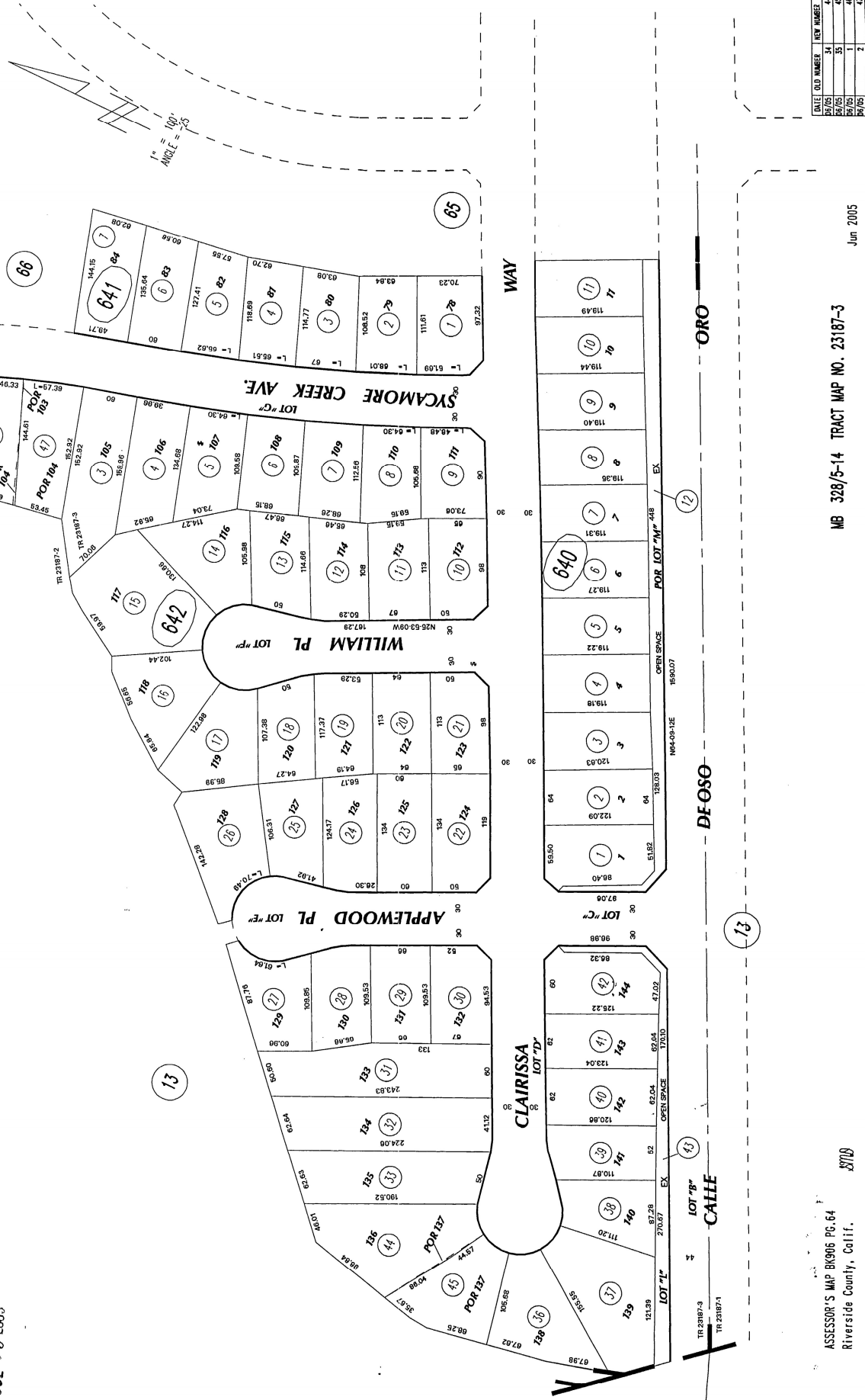
906-64
906-13

T.R.A. 024-082

POR. PROTRACTED SEC. 7 T.7S., R.3W
CITY OF MURRIETA

THIS MAP WAS PREPARED FOR ASSESSMENT PURPOSES ONLY. NO LIABILITY IS ASSURED FOR THE ACCURACY OF THE DATA SHOWN. ASSESSOR'S PARCEL MAY NOT COMPLY WITH LOCAL LOT-SPLIT OR BUILDING SITE ORDINANCES.

JUL 05 2005



FILE	OLD NUMBER	NEW NUMBER
25/05	34	44
25/05	35	45
25/05	1	46
25/05	2	47

MB 328/5-14 TRACT MAP NO. 23187-3

Jun 2005

ASSESSOR'S MAP BK906 PG. 64
Riverside County, Calif.

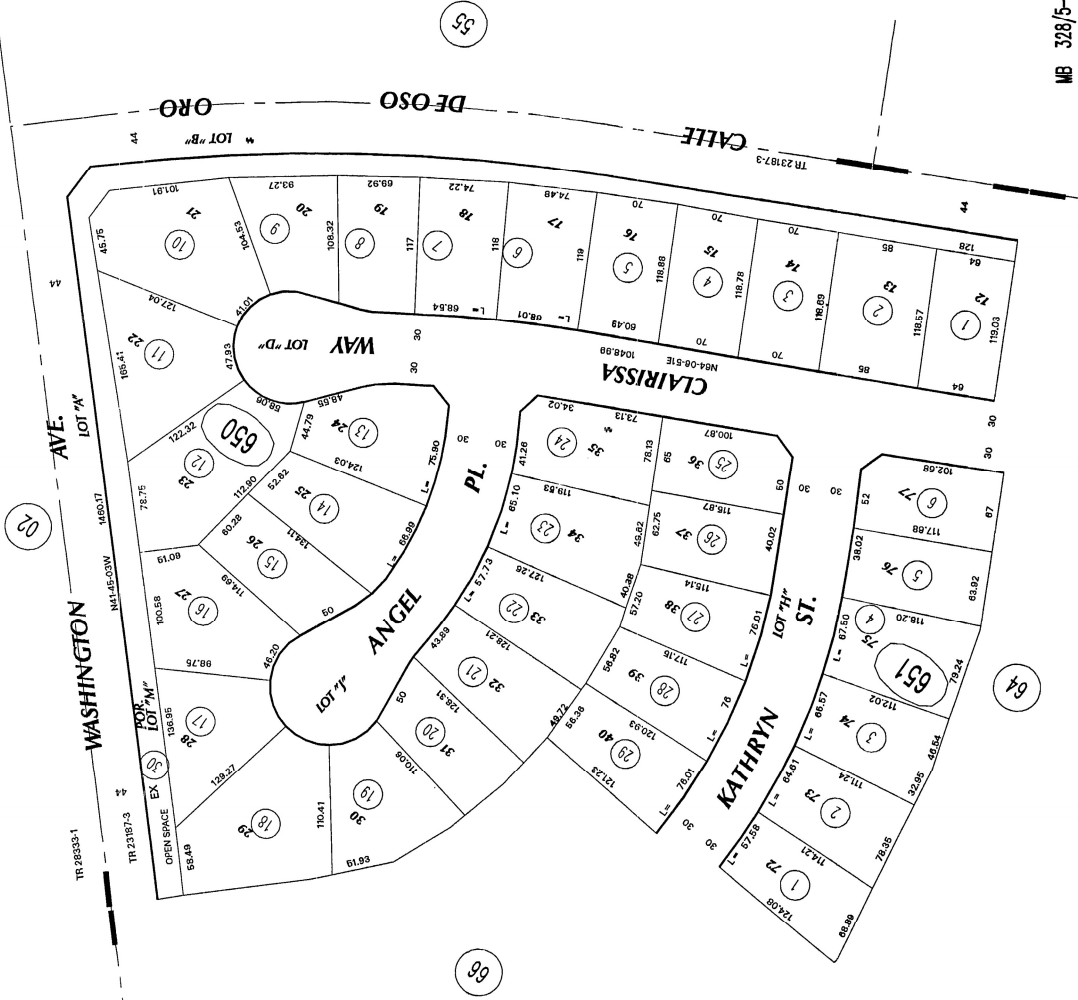
28709

THIS MAP WAS PREPARED FOR ASSESSMENT PURPOSES ONLY. NO LIABILITY IS ASSUMED FOR THE ACCURACY OF THE DATA SHOWN. ASSESSOR'S PARCEL MAY NOT COMPLY WITH LOCAL LOT-SPLIT OR BUILDING SITE ORDINANCES.

906-65
906-13

T.R.A. 024-082

POR. PROTRACTED SEC. 7 T.7S., R.3W
CITY OF MURRIETA



MB 328/5-14 TRACT MAP NO. 23187-3
May 2003

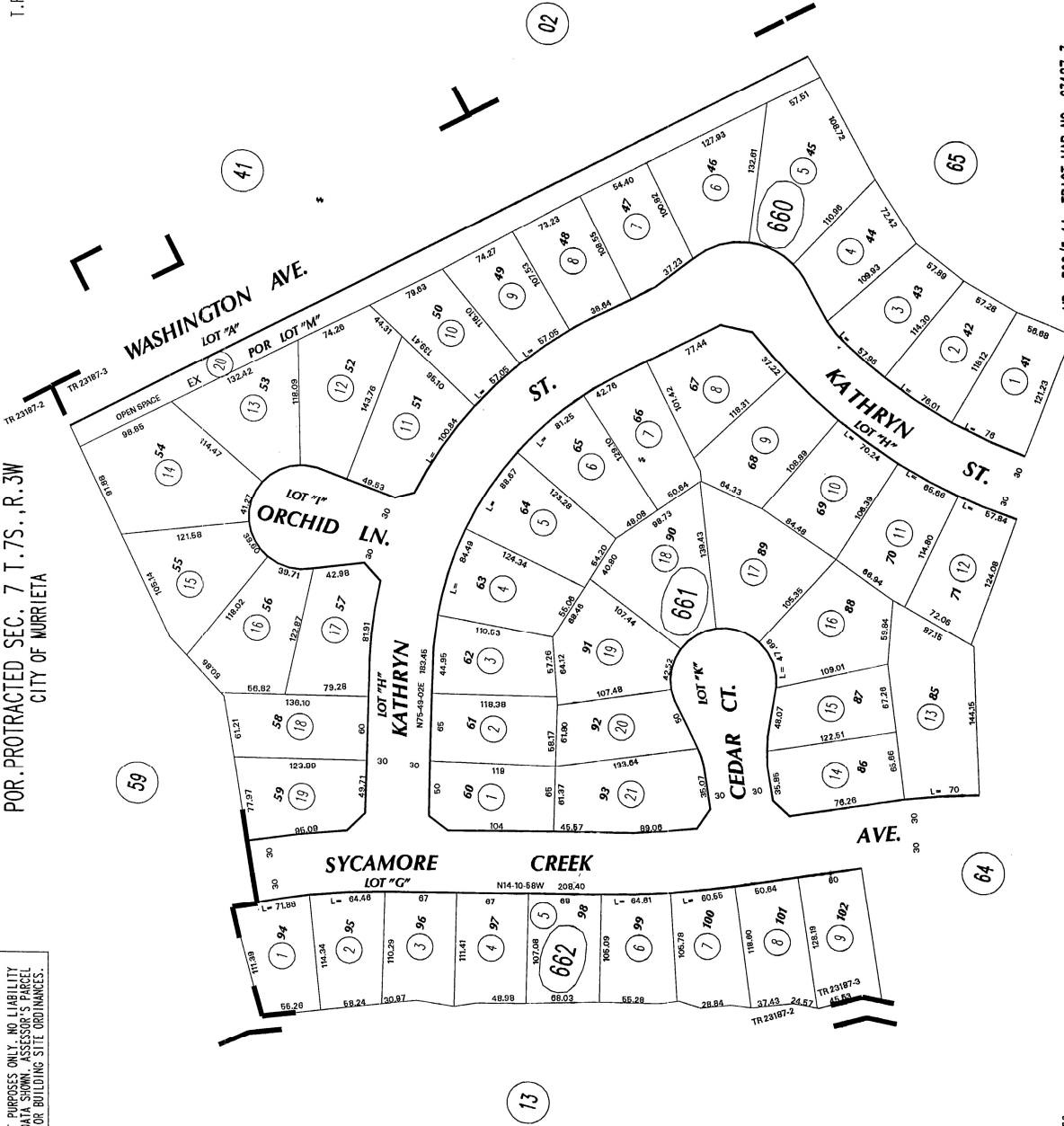
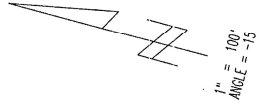
ASSESSOR'S MAP 8X906 PG.65
Riverside County, Calif.
A55

906-66
906-13

T.R.A. 024-082

POR. PROTRACTED SEC. 7 T.7S., R.3W
CITY OF MURRIETA

THIS MAP WAS PREPARED FOR ASSESSMENT PURPOSES ONLY. NO LIABILITY IS ASSURED FOR THE ACCURACY OF THE DATA SHOWN. ASSESSOR'S PARCEL MAY NOT COMPLY WITH LOCAL LOT-SPLIT OR BUILDING SITE ORDINANCES.



ASSESSOR'S MAP BK006 PG. 66
Riverside County, Calif.

MB 328/5-14 TRACT MAP NO. 23187-3

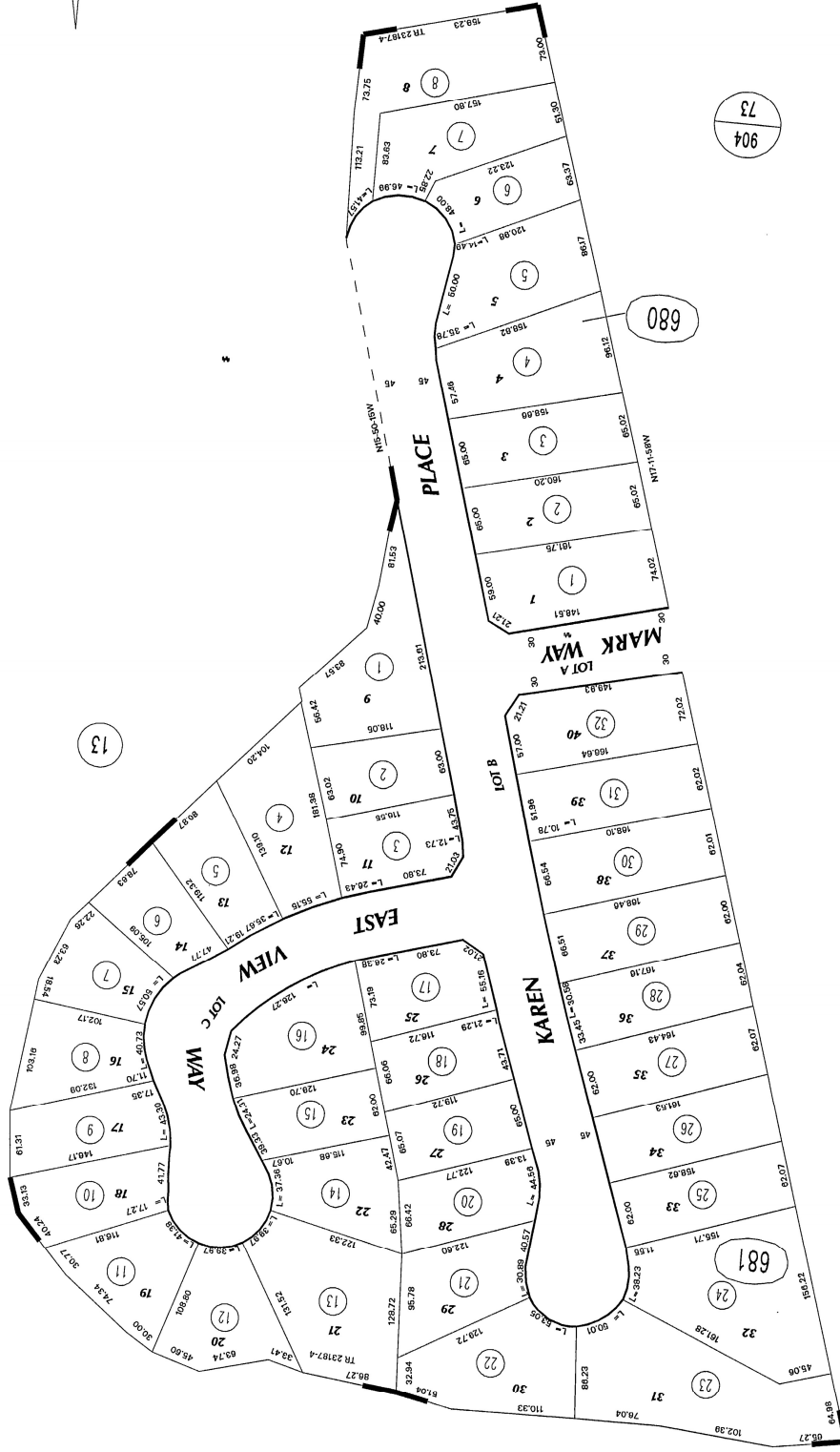
May 2003

906-68
906-13

T.R.A. 024-082

SEC. 12 T. 7S., R. 4W
CITY OF MURRIETA

THIS MAP WAS PREPARED FOR ASSESSMENT PURPOSES ONLY. NO LIABILITY IS ASSIGNED FOR THE ACCURACY OF THE DATA SHOWN. ASSESSOR'S PARCEL MAY NOT COMPLY WITH LOCAL LOT-SPLIT OR BUILDING SITE ORDINANCES.



ASSESSOR'S MAP BK906 PG. 68
Riverside County, Calif.

MB 334/35-39 TRACT MAP NO 23187-4

Nov 2003

Exhibit D

2016 Special Tax Refunding Bonds Debt Service Schedule

Murrieta Valley Unified School District
Community Facilities District No. 2002-1
2016 Special Tax Refunding Bonds
Debt Service Schedule

Period	2016 Special Tax Refunding Bonds		
	Principal	Interest	Total Debt Service
9/1/2016	\$145,000.00	\$13,752.08	\$158,752.08
9/1/2017	115,000.00	115,675.00	230,675.00
9/1/2018	120,000.00	111,650.00	231,650.00
9/1/2019	125,000.00	107,450.00	232,450.00
9/1/2020	130,000.00	103,075.00	233,075.00
9/1/2021	135,000.00	98,525.00	233,525.00
9/1/2022	140,000.00	93,800.00	233,800.00
9/1/2023	145,000.00	88,900.00	233,900.00
9/1/2024	150,000.00	83,825.00	233,825.00
9/1/2025	155,000.00	78,575.00	233,575.00
9/1/2026	160,000.00	73,150.00	233,150.00
9/1/2027	165,000.00	67,550.00	232,550.00
9/1/2028	170,000.00	61,775.00	231,775.00
9/1/2029	175,000.00	55,825.00	230,825.00
9/1/2030	185,000.00	49,700.00	234,700.00
9/1/2031	190,000.00	43,225.00	233,225.00
9/1/2032	195,000.00	36,575.00	231,575.00
9/1/2033	200,000.00	29,750.00	229,750.00
9/1/2034	210,000.00	22,750.00	232,750.00
9/1/2035	215,000.00	15,400.00	230,400.00
9/1/2036	225,000.00	7,875.00	232,875.00
Total	\$3,450,000.00	\$1,358,802.08	\$4,808,802.08

Exhibit E

Delinquent Annual Special Tax Report



Fixed Charge Special Assessment Delinquency Report

Year End for Fiscal Year 2021/2022

Murrieta Valley Unified School District Community Facilities District No. 2002-1

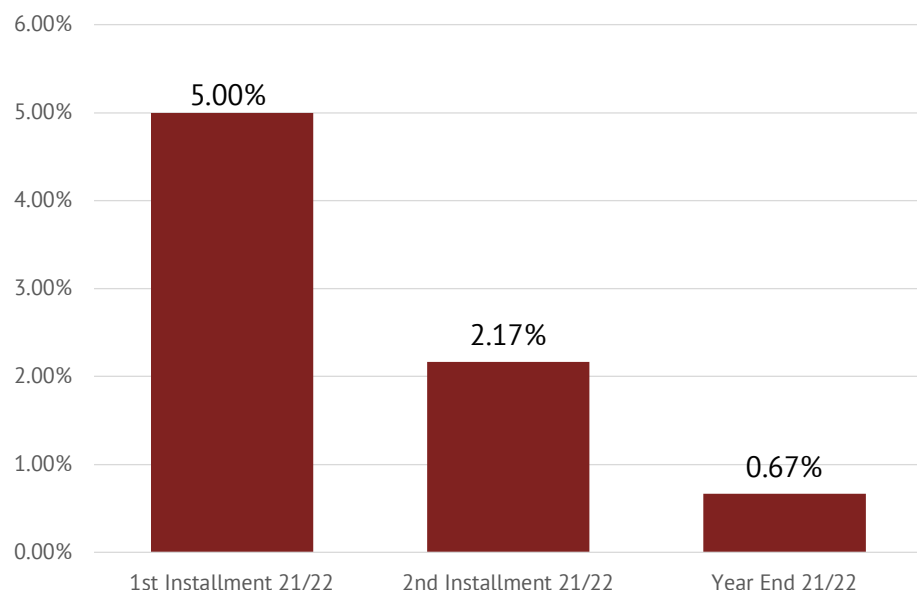


Summary

Year End

Total Taxes Due June 30, 2022	\$265,062.00
Amount Paid	\$263,294.92
Amount Remaining to be Collected	\$1,767.08
Number of Parcels Delinquent	2
Delinquency Rate	0.67%

Year End Delinquency Rate Comparison



Foreclosure

CFD Subject to Foreclosure Covenant:	Yes
Foreclosure Determination Date 1st Installment:	February 15th
Foreclosure Notification Date 1st Installment:	April 1st
Foreclosure Determination Date 2nd Installment:	June 15th
Foreclosure Notification Date 2nd Installment:	July 30th
Foreclosure Commencement Date:	September 13th

Foreclosure Qualification

Individual Owner Multiple Parcels Delinquency	\$15,000
Individual Parcels Semi-Annual Installments	5
Aggregate Delinquency Rate	5.00%

Parcels Qualifying for Foreclosure

Parcels Exceeding Individual Foreclosure Threshold	0
Parcels Exceeding CFD Aggregate	0

Pursuant to the Fiscal Agent Agreement, the District may elect to forego foreclosure proceedings as long as the Reserve Fund is fully funded and the Debt Service can be paid.



Fixed Charge Special Assessment Delinquency Report

Year End for Fiscal Year 2021/2022

Murrieta Valley Unified School District Community Facilities District No. 2002-1



Historical Delinquency Summary

Fiscal Year	Subject Fiscal Year					June 30, 2022	
	Aggregate Special Tax	Parcels Delinquent	Amount Collected	Amount Delinquent	Delinquency Rate	Remaining Amount Delinquent	Remaining Delinquency Rate
2017/2018	\$265,062.00	5	\$261,969.61	\$3,092.39	1.17%	\$0.00	0.00%
2018/2019	265,062.00	3	263,294.92	1,767.08	0.67%	0.00	0.00%
2019/2020	265,062.00	2	263,294.92	1,767.08	0.67%	0.00	0.00%
2020/2021	265,062.00	3	263,294.92	1,767.08	0.67%	441.77	0.17%
2021/2022	265,062.00	2	263,294.92	1,767.08	0.67%	1,767.08	0.67%

Historical Delinquency Rate

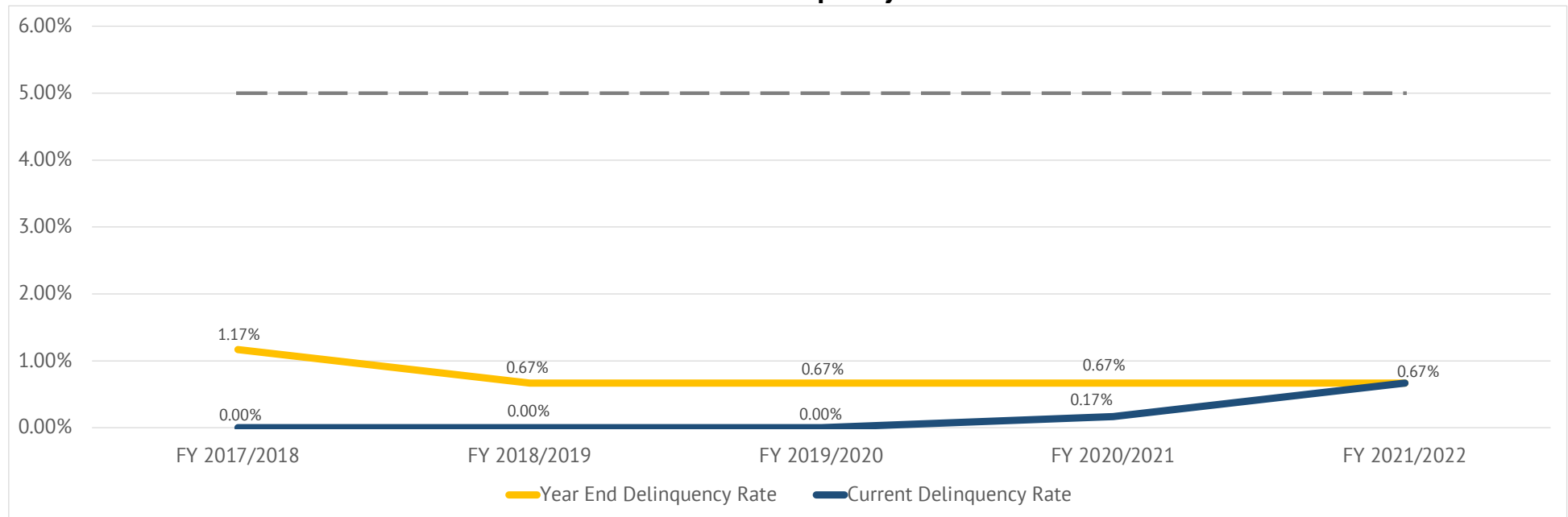


Exhibit F

Summary of Transactions for Fiscal Agent Accounts

Fund: CFD No. 2002-1 2016 Special Tax Refunding Bonds
Subfund: 5905257A - Special Tax Fund

Date	Interest	Deposits	Transfers In	Transfers Out	Expenditures	Balance	Payee	Reference	Description
07-01-2021	\$1,421.46	\$761,483.08	\$48,560.99	(\$575,854.50)	\$0.00	\$235,611.03			BEGINNING BALANCE
07-01-2021	\$1.89					\$235,612.92		Interest	Interest Earnings
08-02-2021	\$2.05					\$235,614.97		Interest	Interest Earnings
08-05-2021		\$2,915.64				\$238,530.61		Deposit	Special Tax Deposit
09-01-2021	\$2.07					\$238,532.68		Interest	Interest Earnings
09-01-2021				(\$184,262.50)		\$54,270.18		Transfer Out	Transfer to Bond Fund (5905257B)
10-01-2021	\$0.46					\$54,270.64		Interest	Interest Earnings
10-14-2021			\$16,698.05			\$70,968.69		Transfer In	Transfer from Surplus Revenue Fund 5905250S
10-14-2021				(\$44,462.49)		\$26,506.20		Transfer Out	Transfer From Surplus Special Tax 5905257R
11-01-2021	\$0.33					\$26,506.53		Interest	Interest Earnings
12-01-2021	\$0.22					\$26,506.75		Interest	Interest Earnings
01-03-2022	\$0.23					\$26,506.98		Interest	Interest Earnings
02-01-2022	\$0.23					\$26,507.21		Interest	Interest Earnings
02-04-2022		\$131,501.49				\$158,008.70		Deposit	Special Tax Deposit
02-25-2022		\$491.92				\$158,500.62		Deposit	Special Tax Deposit
03-01-2022	\$1.13					\$158,501.75		Interest	Interest Earnings
03-01-2022				(\$46,900.00)		\$111,601.75		Transfer Out	Transfer To #5905257B Bond Fund
04-01-2022	\$0.97					\$111,602.72		Interest	Interest Earnings
05-02-2022	\$0.94					\$111,603.66		Interest	Interest Earnings
06-01-2022	\$19.33					\$111,622.99		Interest	Interest Earnings
06-10-2022		\$127,976.47				\$239,599.46		Deposit	Special Tax Deposit
	\$29.85	\$262,885.52	\$16,698.05	(\$275,624.99)	\$0.00	\$3,988.43			DATE RANGE BALANCE
Subfund Total	\$1,451.31	\$1,024,368.60	\$65,259.04	(\$851,479.49)	\$0.00	\$239,599.46	Total for 5905257A - Special Tax Fund		

Subfund: 5905257B - Bond Fund

Date	Interest	Deposits	Transfers In	Transfers Out	Expenditures	Balance	Payee	Reference	Description
07-01-2021	\$0.00	\$0.12	\$461,062.50	(\$461,062.50)	\$0.00	\$0.12			BEGINNING BALANCE
09-01-2021					(\$49,262.50)	(\$49,262.38)	Cede & Co	Debt Service Payment	Debt Service Interest
09-01-2021					(\$135,000.00)	(\$184,262.38)	Cede & Co	Debt Service Payment	Debt Service Principal
09-01-2021			\$184,262.50			\$0.12		Transfer In	Transfer from Special Tax Fund (5905257A)
03-01-2022					(\$46,900.00)	(\$46,899.88)	Cede & Co	Debt Service Payment	Debt Service Interest
03-01-2022			\$46,900.00			\$0.12		Transfer In	Transfer From #5905257A Special Tax Fund
	\$0.00	\$0.00	\$231,162.50	\$0.00	(\$231,162.50)	\$0.00			DATE RANGE BALANCE
Subfund Total	\$0.00	\$0.12	\$692,225.00	(\$461,062.50)	(\$231,162.50)	\$0.12	Total for 5905257B - Bond Fund		

Subfund: 5905257E - Improvement Fund

Date	Interest	Deposits	Transfers In	Transfers Out	Expenditures	Balance	Payee	Reference	Description
07-01-2021	\$43.63	\$3,697.98	\$0.00	\$0.00	(\$3,741.59)	\$0.02			BEGINNING BALANCE
	\$0.00	\$0.00	\$0.00	\$0.00	\$0.00	\$0.00			DATE RANGE BALANCE
Subfund Total	\$43.63	\$3,697.98	\$0.00	\$0.00	(\$3,741.59)	\$0.02	Total for 5905257E - Improvement Fund		

Subfund: 5905257I - Administrative Expense Fund

Date	Interest	Deposits	Transfers In	Transfers Out	Expenditures	Balance	Payee	Reference	Description
07-01-2021	\$184.04	\$23,046.76	\$36,000.00	\$0.00	(\$28,865.15)	\$30,365.65			BEGINNING BALANCE
07-01-2021	\$0.24					\$30,365.89		Interest	Interest Earnings
08-02-2021	\$0.26					\$30,366.15		Interest	Interest Earnings
08-30-2021					(\$10,433.10)	\$19,933.05	Murrieta Valley Unified School District	Prof./Consulting Services and Op. Exp.	Req #51 dtd 08/24/2021 Cooperative Strategies LLC; Colbi Tech Inc.& KeyAnalytics
09-01-2021	\$0.26					\$19,933.31		Interest	Interest Earnings
09-17-2021					(\$85.74)	\$19,847.57	Zions First National Bank	Prof./Consulting Services and Op. Exp.	Req. No. 52 Dated 09/01/21 Annual Admin Fee(July21-June22)
10-01-2021	\$0.17					\$19,847.74		Interest	Interest Earnings
10-06-2021					(\$1,850.00)	\$17,997.74	Zions First National Bank	Prof./Consulting Services and Op. Exp.	Req. No.52 Invoice No. 9771
11-01-2021	\$0.16					\$17,997.90		Interest	Interest Earnings
12-01-2021	\$0.15					\$17,998.05		Interest	Interest Earnings
01-03-2022	\$0.16					\$17,998.21		Interest	Interest Earnings
02-01-2022	\$0.16					\$17,998.37		Interest	Interest Earnings
03-01-2022	\$0.14					\$17,998.51		Interest	Interest Earnings
04-01-2022	\$0.16					\$17,998.67		Interest	Interest Earnings
05-02-2022	\$0.15					\$17,998.82		Interest	Interest Earnings
06-01-2022	\$3.12					\$18,001.94		Interest	Interest Earnings
	\$5.13	\$0.00	\$0.00	\$0.00	(\$12,368.84)	(\$12,363.71)			DATE RANGE BALANCE
Subfund Total	\$189.17	\$23,046.76	\$36,000.00	\$0.00	(\$41,233.99)	\$18,001.94	Total for 5905257I - Administrative Expense Fund		

Subfund: 5905257R - Special Tax Remainder Fund

Date	Interest	Deposits	Transfers In	Transfers Out	Expenditures	Balance	Payee	Reference	Description
07-01-2021	\$0.00	\$0.88	\$78,792.00	(\$78,792.00)	\$0.00	\$0.88			BEGINNING BALANCE
10-14-2021			\$44,462.49			\$44,463.37		Transfer In	Transfer From Surplus Special Tax 5905257A
10-14-2021				(\$44,462.49)		\$0.88		Transfer Out	Transfer To Project Fund Custody 5909232E
	\$0.00	\$0.00	\$44,462.49	(\$44,462.49)	\$0.00	\$0.00			DATE RANGE BALANCE
Subfund Total	\$0.00	\$0.88	\$123,254.49	(\$123,254.49)	\$0.00	\$0.88	Total for 5905257R - Special Tax Remainder Fund		
Fund Total	\$1,684.11	\$1,051,114.34	\$916,738.53	(\$1,435,796.48)	(\$276,138.08)	\$257,602.42	Total for CFD No. 2002-1 2016 Special Tax Refunding Bonds		
Grand Total	\$1,684.11	\$1,051,114.34	\$916,738.53	(\$1,435,796.48)	(\$276,138.08)	\$257,602.42	Grand Total for Selected Funds/SubFunds		

Exhibit G

Annual Special Tax Roll for Fiscal Year 2022/2023

Murrieta Valley Unified School District
Community Facilities District No. 2002-1
Fiscal Year 2022/2023 Special Tax Roll

Tract	Lot	Assessor's Parcel Number	Assigned Special Tax
0	0	906-130-062	\$0.00
0	0	906-130-066	\$0.00
23187-2	14	906-581-014	\$0.00
23187-2	L	906-591-032	\$0.00
23187-2	M	906-592-007	\$0.00
23187-3	M	906-640-012	\$0.00
23187-3	L	906-642-043	\$0.00
23187-3	M	906-650-030	\$0.00
23187-3	M	906-660-020	\$0.00
23187-2	1	906-581-001	\$883.54
23187-2	2	906-581-002	\$883.54
23187-2	3	906-581-003	\$883.54
23187-2	4	906-581-004	\$883.54
23187-2	5	906-581-005	\$883.54
23187-2	6	906-581-006	\$883.54
23187-2	7	906-581-007	\$883.54
23187-2	8	906-581-008	\$883.54
23187-2	9	906-581-009	\$883.54
23187-2	10	906-581-010	\$883.54
23187-2	11	906-581-011	\$883.54
23187-2	12	906-581-012	\$883.54
23187-2	13	906-581-013	\$883.54
23187-2	15	906-581-015	\$883.54
23187-2	16	906-581-016	\$883.54
23187-2	17	906-581-017	\$883.54
23187-2	18	906-581-018	\$883.54
23187-2	19	906-581-019	\$883.54
23187-2	20	906-581-020	\$883.54
23187-2	21	906-581-021	\$883.54
23187-2	22	906-581-022	\$883.54
23187-2	23	906-581-023	\$883.54
23187-2	24	906-581-024	\$883.54
23187-2	25	906-581-025	\$883.54
23187-2	26	906-581-026	\$883.54
23187-2	27	906-581-027	\$883.54
23187-2	28	906-581-028	\$883.54
23187-2	29	906-581-029	\$883.54
23187-2	30	906-581-030	\$883.54
23187-2	31	906-581-031	\$883.54
23187-2	32	906-581-032	\$883.54
23187-2	88	906-582-001	\$883.54
23187-2	89	906-582-002	\$883.54

Murrieta Valley Unified School District
Community Facilities District No. 2002-1
Fiscal Year 2022/2023 Special Tax Roll

Tract	Lot	Assessor's Parcel Number	Assigned Special Tax
23187-2	90	906-582-003	\$883.54
23187-2	91	906-582-004	\$883.54
23187-2	92	906-582-005	\$883.54
23187-2	93	906-582-006	\$883.54
23187-2	94	906-582-007	\$883.54
23187-2	95	906-582-008	\$883.54
23187-2	96	906-582-009	\$883.54
23187-2	103	906-582-010	\$883.54
23187-2	104	906-582-011	\$883.54
23187-2	105	906-582-012	\$883.54
23187-2	106	906-582-013	\$883.54
23187-2	107	906-582-014	\$883.54
23187-2	108	906-582-015	\$883.54
23187-2	109	906-582-016	\$883.54
23187-2	110	906-582-017	\$883.54
23187-2	111	906-582-018	\$883.54
23187-2	112	906-582-019	\$883.54
23187-2	113	906-582-020	\$883.54
23187-2	114	906-582-021	\$883.54
23187-2	115	906-582-022	\$883.54
23187-2	116	906-582-023	\$883.54
23187-2	117	906-582-024	\$883.54
23187-2	84	906-591-001	\$883.54
23187-2	83	906-591-002	\$883.54
23187-2	82	906-591-003	\$883.54
23187-2	81	906-591-004	\$883.54
23187-2	80	906-591-005	\$883.54
23187-2	79	906-591-006	\$883.54
23187-2	78	906-591-007	\$883.54
23187-2	77	906-591-008	\$883.54
23187-2	76	906-591-009	\$883.54
23187-2	75	906-591-010	\$883.54
23187-2	74	906-591-011	\$883.54
23187-2	73	906-591-012	\$883.54
23187-2	72	906-591-013	\$883.54
23187-2	71	906-591-014	\$883.54
23187-2	70	906-591-015	\$883.54
23187-2	69	906-591-016	\$883.54
23187-2	68	906-591-017	\$883.54
23187-2	67	906-591-018	\$883.54
23187-2	66	906-591-019	\$883.54
23187-2	65	906-591-020	\$883.54

Murrieta Valley Unified School District
Community Facilities District No. 2002-1
Fiscal Year 2022/2023 Special Tax Roll

Tract	Lot	Assessor's Parcel Number	Assigned Special Tax
23187-2	64	906-591-021	\$883.54
23187-2	63	906-591-022	\$883.54
23187-2	62	906-591-023	\$883.54
23187-2	61	906-591-024	\$883.54
23187-2	60	906-591-025	\$883.54
23187-2	59	906-591-026	\$883.54
23187-2	58	906-591-027	\$883.54
23187-2	57	906-591-028	\$883.54
23187-2	56	906-591-029	\$883.54
23187-2	55	906-591-030	\$883.54
23187-2	54	906-591-031	\$883.54
23187-2	48	906-592-001	\$883.54
23187-2	49	906-592-002	\$883.54
23187-2	50	906-592-003	\$883.54
23187-2	51	906-592-004	\$883.54
23187-2	52	906-592-005	\$883.54
23187-2	53	906-592-006	\$883.54
23187-2	33	906-593-001	\$883.54
23187-2	34	906-593-002	\$883.54
23187-2	35	906-593-003	\$883.54
23187-2	36	906-593-004	\$883.54
23187-2	37	906-593-005	\$883.54
23187-2	38	906-593-006	\$883.54
23187-2	39	906-593-007	\$883.54
23187-2	40	906-593-008	\$883.54
23187-2	41	906-593-009	\$883.54
23187-2	42	906-593-010	\$883.54
23187-2	43	906-593-011	\$883.54
23187-2	44	906-593-012	\$883.54
23187-2	45	906-593-013	\$883.54
23187-2	46	906-593-014	\$883.54
23187-2	47	906-593-015	\$883.54
23187-2	97	906-594-001	\$883.54
23187-2	98	906-594-002	\$883.54
23187-2	99	906-594-003	\$883.54
23187-2	100	906-594-004	\$883.54
23187-2	101	906-594-005	\$883.54
23187-2	102	906-594-006	\$883.54
23187-2	85	906-595-001	\$883.54
23187-2	86	906-595-002	\$883.54
23187-2	87	906-595-003	\$883.54
23187-3	1	906-640-001	\$883.54

Murrieta Valley Unified School District
Community Facilities District No. 2002-1
Fiscal Year 2022/2023 Special Tax Roll

Tract	Lot	Assessor's Parcel Number	Assigned Special Tax
23187-3	2	906-640-002	\$883.54
23187-3	3	906-640-003	\$883.54
23187-3	4	906-640-004	\$883.54
23187-3	5	906-640-005	\$883.54
23187-3	6	906-640-006	\$883.54
23187-3	7	906-640-007	\$883.54
23187-3	8	906-640-008	\$883.54
23187-3	9	906-640-009	\$883.54
23187-3	10	906-640-010	\$883.54
23187-3	11	906-640-011	\$883.54
23187-3	78	906-641-001	\$883.54
23187-3	79	906-641-002	\$883.54
23187-3	80	906-641-003	\$883.54
23187-3	81	906-641-004	\$883.54
23187-3	82	906-641-005	\$883.54
23187-3	83	906-641-006	\$883.54
23187-3	84	906-641-007	\$883.54
23187-3	105	906-642-003	\$883.54
23187-3	106	906-642-004	\$883.54
23187-3	107	906-642-005	\$883.54
23187-3	108	906-642-006	\$883.54
23187-3	109	906-642-007	\$883.54
23187-3	110	906-642-008	\$883.54
23187-3	111	906-642-009	\$883.54
23187-3	112	906-642-010	\$883.54
23187-3	113	906-642-011	\$883.54
23187-3	114	906-642-012	\$883.54
23187-3	115	906-642-013	\$883.54
23187-3	116	906-642-014	\$883.54
23187-3	117	906-642-015	\$883.54
23187-3	118	906-642-016	\$883.54
23187-3	119	906-642-017	\$883.54
23187-3	120	906-642-018	\$883.54
23187-3	121	906-642-019	\$883.54
23187-3	122	906-642-020	\$883.54
23187-3	123	906-642-021	\$883.54
23187-3	124	906-642-022	\$883.54
23187-3	125	906-642-023	\$883.54
23187-3	126	906-642-024	\$883.54
23187-3	127	906-642-025	\$883.54
23187-3	128	906-642-026	\$883.54
23187-3	129	906-642-027	\$883.54

Murrieta Valley Unified School District
Community Facilities District No. 2002-1
Fiscal Year 2022/2023 Special Tax Roll

Tract	Lot	Assessor's Parcel Number	Assigned Special Tax
23187-3	130	906-642-028	\$883.54
23187-3	131	906-642-029	\$883.54
23187-3	132	906-642-030	\$883.54
23187-3	133	906-642-031	\$883.54
23187-3	134	906-642-032	\$883.54
23187-3	135	906-642-033	\$883.54
23187-3	138	906-642-036	\$883.54
23187-3	139	906-642-037	\$883.54
23187-3	140	906-642-038	\$883.54
23187-3	141	906-642-039	\$883.54
23187-3	142	906-642-040	\$883.54
23187-3	143	906-642-041	\$883.54
23187-3	144	906-642-042	\$883.54
23187-3	136	906-642-044	\$883.54
23187-3	137	906-642-045	\$883.54
23187-3	103	906-642-046	\$883.54
23187-3	104	906-642-047	\$883.54
23187-3	12	906-650-001	\$883.54
23187-3	13	906-650-002	\$883.54
23187-3	14	906-650-003	\$883.54
23187-3	15	906-650-004	\$883.54
23187-3	16	906-650-005	\$883.54
23187-3	17	906-650-006	\$883.54
23187-3	18	906-650-007	\$883.54
23187-3	19	906-650-008	\$883.54
23187-3	20	906-650-009	\$883.54
23187-3	21	906-650-010	\$883.54
23187-3	22	906-650-011	\$883.54
23187-3	23	906-650-012	\$883.54
23187-3	24	906-650-013	\$883.54
23187-3	25	906-650-014	\$883.54
23187-3	26	906-650-015	\$883.54
23187-3	27	906-650-016	\$883.54
23187-3	28	906-650-017	\$883.54
23187-3	29	906-650-018	\$883.54
23187-3	30	906-650-019	\$883.54
23187-3	31	906-650-020	\$883.54
23187-3	32	906-650-021	\$883.54
23187-3	33	906-650-022	\$883.54
23187-3	34	906-650-023	\$883.54
23187-3	35	906-650-024	\$883.54
23187-3	36	906-650-025	\$883.54

Murrieta Valley Unified School District
Community Facilities District No. 2002-1
Fiscal Year 2022/2023 Special Tax Roll

Tract	Lot	Assessor's Parcel Number	Assigned Special Tax
23187-3	37	906-650-026	\$883.54
23187-3	38	906-650-027	\$883.54
23187-3	39	906-650-028	\$883.54
23187-3	40	906-650-029	\$883.54
23187-3	72	906-651-001	\$883.54
23187-3	73	906-651-002	\$883.54
23187-3	74	906-651-003	\$883.54
23187-3	75	906-651-004	\$883.54
23187-3	76	906-651-005	\$883.54
23187-3	77	906-651-006	\$883.54
23187-3	41	906-660-001	\$883.54
23187-3	42	906-660-002	\$883.54
23187-3	43	906-660-003	\$883.54
23187-3	44	906-660-004	\$883.54
23187-3	45	906-660-005	\$883.54
23187-3	46	906-660-006	\$883.54
23187-3	47	906-660-007	\$883.54
23187-3	48	906-660-008	\$883.54
23187-3	49	906-660-009	\$883.54
23187-3	50	906-660-010	\$883.54
23187-3	51	906-660-011	\$883.54
23187-3	52	906-660-012	\$883.54
23187-3	53	906-660-013	\$883.54
23187-3	54	906-660-014	\$883.54
23187-3	55	906-660-015	\$883.54
23187-3	56	906-660-016	\$883.54
23187-3	57	906-660-017	\$883.54
23187-3	58	906-660-018	\$883.54
23187-3	59	906-660-019	\$883.54
23187-3	60	906-661-001	\$883.54
23187-3	61	906-661-002	\$883.54
23187-3	62	906-661-003	\$883.54
23187-3	63	906-661-004	\$883.54
23187-3	64	906-661-005	\$883.54
23187-3	65	906-661-006	\$883.54
23187-3	66	906-661-007	\$883.54
23187-3	67	906-661-008	\$883.54
23187-3	68	906-661-009	\$883.54
23187-3	69	906-661-010	\$883.54
23187-3	70	906-661-011	\$883.54
23187-3	71	906-661-012	\$883.54
23187-3	85	906-661-013	\$883.54

Murrieta Valley Unified School District
Community Facilities District No. 2002-1
Fiscal Year 2022/2023 Special Tax Roll

Tract	Lot	Assessor's Parcel Number	Assigned Special Tax
23187-3	86	906-661-014	\$883.54
23187-3	87	906-661-015	\$883.54
23187-3	88	906-661-016	\$883.54
23187-3	89	906-661-017	\$883.54
23187-3	90	906-661-018	\$883.54
23187-3	91	906-661-019	\$883.54
23187-3	92	906-661-020	\$883.54
23187-3	93	906-661-021	\$883.54
23187-3	94	906-662-001	\$883.54
23187-3	95	906-662-002	\$883.54
23187-3	96	906-662-003	\$883.54
23187-3	97	906-662-004	\$883.54
23187-3	98	906-662-005	\$883.54
23187-3	99	906-662-006	\$883.54
23187-3	100	906-662-007	\$883.54
23187-3	101	906-662-008	\$883.54
23187-3	102	906-662-009	\$883.54
23187-4	1	906-680-001	\$883.54
23187-4	2	906-680-002	\$883.54
23187-4	3	906-680-003	\$883.54
23187-4	4	906-680-004	\$883.54
23187-4	5	906-680-005	\$883.54
23187-4	6	906-680-006	\$883.54
23187-4	7	906-680-007	\$883.54
23187-4	8	906-680-008	\$883.54
23187-4	9	906-681-001	\$883.54
23187-4	10	906-681-002	\$883.54
23187-4	11	906-681-003	\$883.54
23187-4	12	906-681-004	\$883.54
23187-4	13	906-681-005	\$883.54
23187-4	14	906-681-006	\$883.54
23187-4	15	906-681-007	\$883.54
23187-4	16	906-681-008	\$883.54
23187-4	17	906-681-009	\$883.54
23187-4	18	906-681-010	\$883.54
23187-4	19	906-681-011	\$883.54
23187-4	20	906-681-012	\$883.54
23187-4	21	906-681-013	\$883.54
23187-4	22	906-681-014	\$883.54
23187-4	23	906-681-015	\$883.54
23187-4	24	906-681-016	\$883.54
23187-4	25	906-681-017	\$883.54

Murrieta Valley Unified School District
Community Facilities District No. 2002-1
Fiscal Year 2022/2023 Special Tax Roll

Tract	Lot	Assessor's Parcel Number	Assigned Special Tax
23187-4	26	906-681-018	\$883.54
23187-4	27	906-681-019	\$883.54
23187-4	28	906-681-020	\$883.54
23187-4	29	906-681-021	\$883.54
23187-4	30	906-681-022	\$883.54
23187-4	31	906-681-023	\$883.54
23187-4	32	906-681-024	\$883.54
23187-4	33	906-681-025	\$883.54
23187-4	34	906-681-026	\$883.54
23187-4	35	906-681-027	\$883.54
23187-4	36	906-681-028	\$883.54
23187-4	37	906-681-029	\$883.54
23187-4	38	906-681-030	\$883.54
23187-4	39	906-681-031	\$883.54
23187-4	40	906-681-032	\$883.54

Total Parcels	309
Total Taxable Parcels	300
Total Assigned Special Tax	\$265,062.00