

**Improvement Area B of
Community Facilities District
No. 2002-4
Annual Special Tax Report**

Fiscal Year Ending June 30, 2022

**Murrieta Valley Unified
School District**

2022 / 2023



A division of California Financial Services

School District

Murrieta Valley Unified School District
41870 McAlby Court
Murrieta, CA 92553
T. (951) 696-1600

Fiscal Agent

Zions Bancorporation, National Association
550 South Hope Street, Suite 2875
Los Angeles, CA 90071

Special Tax Administrator

KeyAnalytics
a division of California Financial Services
555 Corporate Drive, Suite 100
Ladera Ranch, CA 92694
T. (949) 282-1077

Special Assessment Questions
T. (877) 575-0265
propertytax@calschools.com

Bond Counsel

Jones Hall
475 Sansome Street, Suite 1700
San Francisco, CA 94111
T. (415) 391-5780

Table of Contents

Introduction	1
I. CFD Background	3
A. Location	3
B. Formation	3
C. Bonds	5
II. Fiscal Year 2021/2022 Annual Special Tax	6
A. Special Tax Levy	6
B. Annual Special Tax Collections and Delinquencies	7
III. Fund and Account Activity and Balances	8
A. Fiscal Agent Accounts	8
B. Sources and Uses of Funds	9
IV. Senate Bill 165	10
A. Authorized Facilities	10
B. 2006 Special Tax Bonds	12
C. 2013 Special Tax Refunding Bonds	13
D. Special Taxes	15
E. Pooled Special Tax Accounts	16
V. Minimum Annual Special Requirement	19
A. Minimum Annual Special Requirement	19
B. Administrative Expense Budget	20
VI. Special Tax Classification	21
A. Developed Property	21
VII. Fiscal Year 2022/2023 Special Tax Levy	22

Exhibit A – Rate and Method of Apportionment

Exhibit B – CFD Boundary Map

Exhibit C – Assessor's Parcel Maps

Exhibit D – 2013 Special Tax Refunding Bonds Debt Service Schedule

Exhibit E – Delinquent Annual Special Tax Report

Exhibit F – Summary of Transactions for Fiscal Agent Accounts

Exhibit G – Annual Special Tax Roll for Fiscal Year 2022/2023

Introduction

Improvement Area B of Community Facilities District No. 2002-4 (“IA B of CFD No. 2002-4”) of the Murrieta Valley Unified School District (the “School District”) was formed pursuant to the terms and provisions of the “Mello-Roos Community Facilities Act of 1982”, as amended (the “Act”), being Chapter 2.5, Part 1, Division 2, Title 5 of the Government Code of the State of California. IA B of CFD No. 2002-4 is authorized under the Act to finance certain facilities (the “Authorized Facilities”) as established at the time of formation.

This Annual Special Tax Report (the “Report”) summarizes certain general and administrative information and analyzes the financial obligations of IA B of CFD No. 2002-4 for the purpose of establishing the Annual Special Tax Levy for Fiscal Year 2022/2023. The Annual Special Tax Levy is calculated pursuant to the Rate and Method of Apportionment (the “RMA”) which is attached to this Report as Exhibit A.

All capitalized terms not defined herein are used as defined in the RMA and/or Fiscal Agent Agreements between the School District and Zions Bancorporation, National Association acting as Fiscal Agent (the “Fiscal Agent”).

This Report is organized into the following Sections:

Section I – CFD Background

Section I provides background information relating to the formation of IA B of CFD No. 2002-4 and the long-term obligations issued to finance the Authorized Facilities.

Section II – Fiscal Year 2021/2022 Special Tax Levy

Section II provides information regarding the levy and collection of Special Taxes for Fiscal Year 2021/2022 and an accounting of the remaining collections.

Section III – Fund and Account Balances

Section III examines the financial activity within the funds and accounts associated with IA B of CFD No. 2002-4.

Section IV – Senate Bill 165

Section IV provides information required under Senate Bill 165 (“SB 165”) regarding the initial allocation of bond proceeds and the expenditure of the Annual Special Taxes and bond proceeds utilized to fund the Authorized Facilities of IA B of CFD No. 2002-4 for Fiscal Year 2021/2022.

Section V – Minimum Annual Special Requirement

Section V calculates the Minimum Annual Special Requirement based on the obligations of IA B of CFD No. 2002-4 for Fiscal Year 2022/2023.

Section VI – Special Tax Classification

Section VI provides updated information regarding the Special Tax classification of parcels within IA B of CFD No. 2002-4.

Section VII – Fiscal Year 2022/2023 Special Tax Levy

Section VII provides the Fiscal Year 2022/2023 Special Tax levy based on updated Special Tax classifications and the Minimum Annual Special Requirement.

I. CFD Background

This Section provides background information regarding the formation of IA B of CFD No. 2002-4 and the bonds issued to fund the Authorized Facilities.

A. Location

IA B of CFD No. 2002-4 is located near the intersection of Liberty Road and Raven Court in the County of Riverside (the “County”). IA B of CFD No. 2002-4 encompasses approximately 50 gross acres. For reference, the boundary map of CFD No. 2002-4 is included as Exhibit B and the current Assessor’s Parcel maps are included as Exhibit C.

B. Formation

IA B of CFD No. 2002-4 was formed and established by the School District on June 27, 2002 under the Act, following a public hearing conducted by the Board of Education of the School District (the “Board”), as legislative body of CFD No. 2002-4, and a landowner election at which the qualified electors of CFD No. 2002-4 authorized IA B of CFD No. 2002-4 to incur bonded indebtedness in an amount not to exceed \$7,000,000 and approved the levy of Annual Special Taxes.

CFD No. 2002-4 was formed pursuant to the SB 50 Finance Agreement (“Agreement”) between the School District and Sunny Days Properties, LLC (“Owner”) dated July 26, 2002. The Agreement is not a mitigation agreement in that it does not establish amounts to be paid to the School District or other public agencies to mitigate any impacts of the development; rather, it sets forth terms for the issuance of Bonds by CFD No. 2002-4 to finance all or a portion of fees authorized to be imposed on the property independent of the Agreement. Specifically, the Agreement establishes terms by which CFD No. 2002-4 will issue Bonds to finance both the school fees and water and sewer fees and facilities, provided that under no circumstances will the water and sewer fees and facilities funded exceed the school fees funded (for details, see the Agreement). In addition, CFD No.

2002-4 is being formed pursuant to a Joint Community Facilities Agreement (“JCFA”) by and between the School District and the Eastern Municipal Water District (“EMWD”), which establishes the terms by which CFD No. 2002-4 will finance water and sewer fees and facilities of EMWD and a JCFA by and between the School District and the Valley-Wide Parks and Recreation District to finance park facilities.

The table below provides information related to the formation of IA B of CFD No. 2002-4.

**Board Actions Related to
Formation of CFD No. 2002-4**

Resolution	Board Meeting Date	Resolution No.
Resolution of Intention	May 23, 2002	01/02-55
Resolution to Incur Bonded Indebtedness	May 23, 2002	01/02-56
Resolution of Formation	June 27, 2002	01/02-66
Resolution of Necessity	June 27, 2002	01/02-67
Resolution Calling Election	June 27, 2002	01/02-68
Ordinance Levying Special Taxes	August 30, 2002	01/02-06

A Notice of Special Tax Lien (“NSTL”) was recorded in the real property records of the County on July 15, 2002, as Instrument No. 2002-386224 on all property within CFD No. 2002-4.

C. Bonds

1. 2006 Special Tax Bonds

On July 20, 2006, the Improvement Area B 2006 Special Tax Bonds of the Murrieta Valley Unified School District Community Facilities District No. 2002-4 (“2006 Bonds”) were issued in the amount of \$5,640,000. The 2006 Bonds were authorized and issued under and subject to the terms of the Fiscal Agent Agreement, dated June 1, 2006 (“2006 FAA”), and the Act. The 2006 Bonds were issued to fund the Authorized Facilities of IA B of CFD No. 2002-4, fund a reserve fund for the 2006 Bonds, pay certain administrative expenses of IA B of CFD No. 2002-4, pay the costs of issuing the 2006 Bonds and fund capitalized interest on the 2006 Bonds through September 1, 2007. For more information regarding the use of the 2006 Bond proceeds please see Section IV of this Report.

2. 2013 Special Tax Refunding Bonds

On February 21, 2013 the 2013 Special Tax Refunding Bonds of the Murrieta Valley Unified School District Improvement Area B of Community Facilities District No. 2002-4 (“2013 Bonds”) were issued in the amount of \$6,125,000. The 2013 Bonds were authorized and issued under and subject to the terms of the Fiscal Agent Agreement dated January 1, 2013 (“2013 FAA”), and the Act. The 2013 Bonds were issued to refund all of the outstanding 2006 Bonds on March 1, 2013 for interest savings and pay the costs of issuing the 2013 Bonds. The 2013 Bonds are Local Obligation Bonds of the Murrieta Valley Unified School District Financing Authority (“Authority”) and are utilized, with the debt service payments from CFD No. 2003-3 and CFD No. 2004-1, to pay the debt service of the 2013 Refunding Revenue Bonds of the Authority. For more information regarding the use of the 2013 Bond proceeds and please see Section IV of this Report.

The 2013 Bonds are payable from the Net Special Tax Revenues levied on property within IA B of CFD No. 2002-4 according to the RMA. A copy of the debt service schedule of the 2013 Bonds is included as Exhibit D.

II. Fiscal Year 2021/2022 Annual Special Tax

Each Fiscal Year, IA B of CFD No. 2002-4 levies and collects Annual Special Taxes pursuant to the RMA in order to meet the obligation for that Fiscal Year. This Section provides a summary of the levy and collection of Annual Special Taxes in Fiscal Year 2021/2022.

A. Special Tax Levy

The Special Tax levy for Fiscal Year 2021/2022 is summarized by Special Tax classification in the table below.

**Fiscal Year 2021/2022
Annual Special Tax Levy**

Tax Class/Land Use	Sq. Footage	Number of Units/Acres	Assigned Annual Special Tax Rate	Total Assigned Annual Special Taxes
1	< 2,600 Sq. Ft.	0 Units	\$1,540.66 Per Unit	\$0.00
2	2,600 Sq. Ft. to 2,800 Sq. Ft.	23 Units	\$1,768.66 Per Unit	40,679.18
3	2,801 Sq. Ft. to 3,000 Sq. Ft.	67 Units	\$1,882.68 Per Unit	126,139.56
4	3,001 Sq. Ft. to 3,200 Sq. Ft.	16 Units	\$1,996.68 Per Unit	31,946.88
5	> 3,200 Sq. Ft.	135 Units	\$2,110.68 Per Unit	284,941.80
<i>Developed Property</i>		<i>241 Units</i>	<i>NA</i>	<i>\$483,707.42</i>
<i>Undeveloped Property</i>		<i>0.00 Acres</i>	<i>\$0.00 Per Acre</i>	<i>\$0.00</i>
Total		241 Units		\$483,707.42

B. Annual Special Tax Collections and Delinquencies

Delinquent Annual Special Taxes for IA B of CFD No. 2002-4, as of June 30, 2022, for Fiscal Year 2021/2022 and prior Fiscal Years are summarized in the table below. Based on the Foreclosure Covenant outlined in the 2013 FAA and the current delinquency rates, no parcel exceeds the foreclosure threshold. A detailed listing of the Fiscal Year 2021/2022 Delinquent Annual Special Taxes, based on the year end collections and information regarding the Foreclosure Covenants is provided as Exhibit E.

IA B of CFD No. 2002-4 Annual Special Tax Collections and Delinquencies

Fiscal Year	Subject Fiscal Year					June 30, 2022	
	Aggregate Special Tax	Parcels Delinquent	Amount Collected	Amount Delinquent	Delinquency Rate	Remaining Amount Delinquent	Remaining Delinquency Rate
2017/2018	\$483,707.42	1	\$482,654.08	\$1,053.34	0.22%	\$0.00	0.00%
2018/2019	483,707.42	1	482,654.08	1,053.34	0.22%	0.00	0.00%
2019/2020	483,707.42	0	483,707.42	0.00	0.00%	0.00	0.00%
2020/2021	483,707.42	1	482,652.08	1,055.34	0.22%	0.00	0.00%
2021/2022	483,707.42	1	482,766.08	941.34	0.19%	941.34	0.19%

III. Fund and Account Activity and Balances

Special Taxes are collected by the County Tax Collector as part of the regular property tax bills. Once received by the County Tax Collector the Special Taxes are transferred to the School District where they are then deposited into the Special Tax Fund held with the Fiscal Agent. Special Taxes are periodically transferred to make debt service payments on the 2013 Bonds and pay other authorized costs. This Section summarizes the account activity and balances of the funds and accounts associated with IA B of CFD No. 2002-4.

A. Fiscal Agent Accounts

Funds and accounts associated with the 2013 Bonds are currently being held by the Fiscal Agent. These funds and accounts were established pursuant to the 2013 FAA, dated November 1, 2013, between the School District and the Fiscal Agent and executed in association with the 2013 Bonds.

The balances, as of June 30, 2022, of the funds, accounts and subaccounts by the Fiscal Agent are listed in the following table. Exhibit F contains a detailed listing of the transactions within these funds for Fiscal Year 2021/2022.

**Fund and Account Balances
as of June 30, 2022**

Account Name	Account Number	Balance
Special Tax Fund	5909239A	\$421,291.39
Bond Fund	5909239B	0.00
Administrative Expense Fund	5909239I	17,550.73
Improvement Fund	5909239E	6.02
Total		\$438,848.14

B. Sources and Uses of Funds

The sources and uses of funds collected and expended by IA B of CFD No. 2002-4 are limited based on the restrictions as described within the 2013 FAA. The table below presents the sources and uses of all funds and accounts for IA B of CFD No. 2002-4 from July 1, 2021 through June 30, 2022. For a more detailed description of the sources and uses of funds please refer to the 2013 FAA.

Fiscal Year 2021/2022 Sources and Uses of Funds

Sources	
Bond Proceeds	\$0.00
Annual Special Tax Receipts	481,204.59
Transfer from the 2016 PFA Surplus Fund	3,692.22
Investment Earnings	55.70
Total	\$484,952.51
Uses	
Interest Payments	(\$217,503.13)
Principal Payments	(185,000.00)
Transfer to the CFD Project Fund Custody	(77,940.93)
Authorized Facilities	0.00
Administrative Expenses	(11,776.86)
Total	(\$492,220.92)

IV. Senate Bill 165

Senate Bill 165, or the Local Agency Special Tax and Bond Accountability Act (“SB 165”), requires any local special tax/local bond measure subject to voter approval contain a statement indicating the specific purposes of the Special Tax, require that the proceeds of the Special Tax be applied to those purposes, require the creation of an account into which the proceeds shall be deposited, and require an annual report containing specified information concerning the use of the proceeds. SB 165 only applies to CFDs authorized on or after January 1, 2001 in accordance with Sections 50075.1 and 53410 of the California Government Code.

A. Authorized Facilities

Pursuant to the Act, IA B of CFD No. 2002-4 can only be used to fund the “Authorized Facilities” as outlined at the time of formation. The following is an excerpt taken from the ROI to establish IA B of CFD No. 2002-4 which describes the Authorized Facilities.

The types of Facilities proposed to be financed by Improvement Areas A, B and C of Community Facilities District No. 2002-4 (CFD) of the Murrieta Valley Unified School District (District) under the Mello-Roos Community Facilities Act of 1982, as amended (the Act) are as follows:

“Facilities” means those K-12 school sites, school facilities, including classrooms, on-site office space at a school, central support and administrative facilities, interim housing, furniture, equipment, technology, busses, and transportation facilities needed by District in order to serve the student population to be generated as a result of development of the property within the CFD.

“Facilities” also means:

<i>Improvement Area A</i>	Eastern Municipal Water District (EMWD) Fees and facilities
---------------------------	--

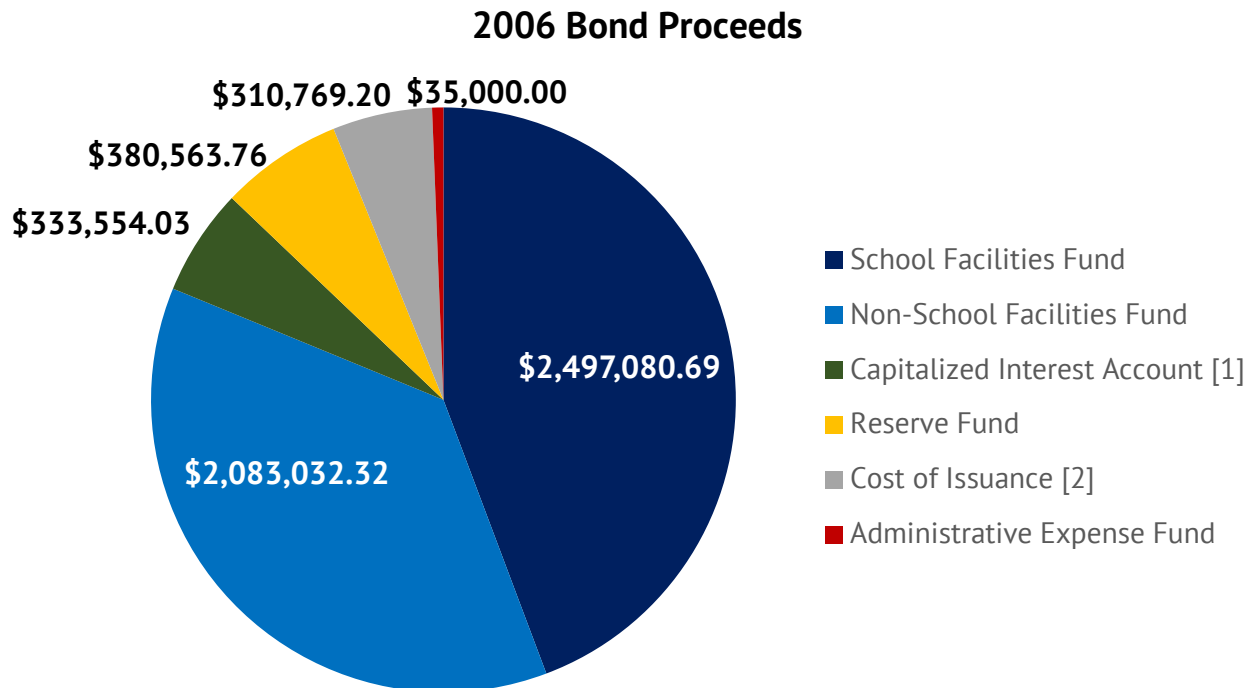
<i>Improvement Area B</i>	EMWD and Valley-Wide Park and Recreation District (Valley-Wide) fees and facilities
<i>Improvement Area C</i>	EMWD fees and facilities

“Facilities” shall also include the attributable costs of engineering, design, planning, materials testing, coordination, construction staking, and construction, together with the expenses related to issuance and sale of any “debt”, as defined in Section 53317(d) of the Act, including underwriters' discount, appraisals, market studies, reserve fund, capitalized interest, bond counsel, special tax consultant, bond and official statement printing, administrative expenses of the District, the CFD and bond trustee or fiscal agent related to the CFD, and any such debt and all other incidental expenses. The Facilities shall be constructed, whether or not acquired in their completed states, pursuant to plans and specifications approved by the District

B. 2006 Special Tax Bonds

1. Bond Proceeds

In accordance with the 2006 FAA for the 2006 Bonds, the total bond proceeds of \$5,640,000 were deposited into the funds and accounts as shown in the graph below.



[1] Represents interest on the 2006 Bonds through September 1, 2007.

[2] This amount includes the Underwriter's Discount of \$141,000.00 and the Original Issue \$163,000.00.

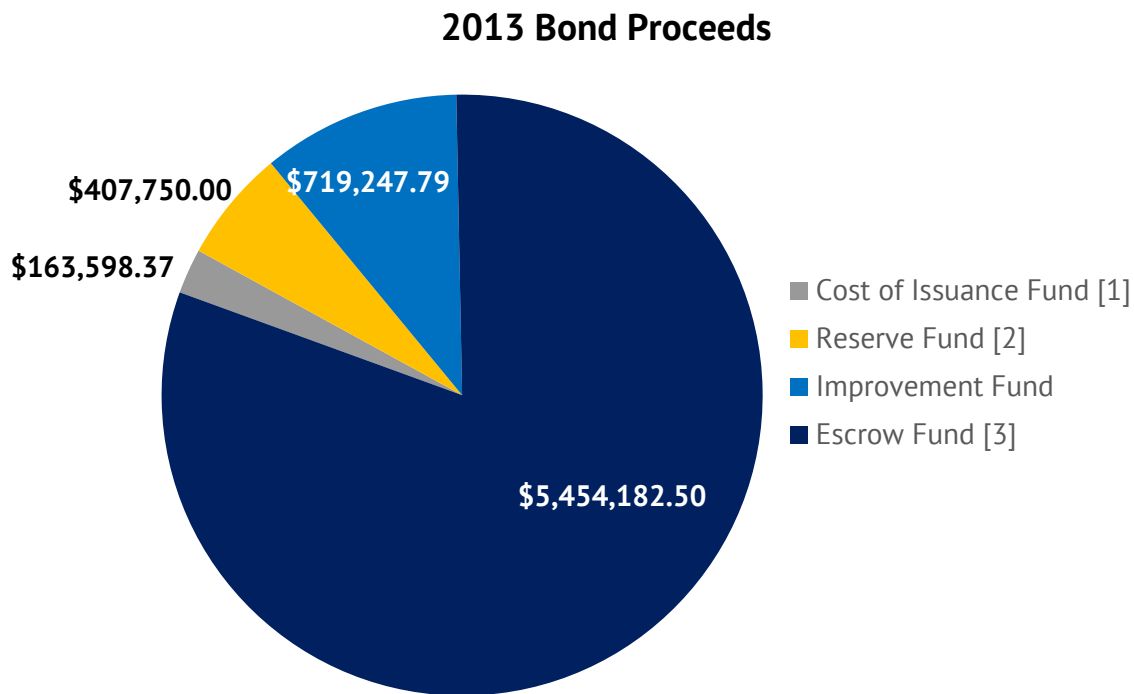
2. Construction Funds and Accounts

As of May 1, 2014, the 2006 Bonds Schools and Non-School Facilities Accounts have been closed and all funds have been expended. Since all funds have been expended, the Schools and Non-School Facilities Accounts will not appear in future years for IA B of CFD No. 2002-4. For an accounting of accruals and expenditures within this account, please refer to the Administration Report for IA B of CFD No. 2002-4 in Fiscal Year 2014/2015 and prior.

C. 2013 Special Tax Refunding Bonds

1. Bond Proceeds

In accordance with the 2013 FAA for the 2013 Bonds, the total bond proceeds of \$6,125,000 were deposited into the funds and accounts as shown in the graph below.



[1] This amount includes the Underwriter's Discount of \$61,250.00. The actual amount deposited in the Costs of Issuance Account was \$102,348.37.

[2] Represents the portion of the 2013 Public Financing Authority Reserve Fund attributable to IA B of CFD No. 2002-4.

[3] Represents the amount used to refund the 2006 Bonds.

2. Construction Funds and Accounts

The table on the following page presents a detailed listing of the accruals and expenditures in the 2013 Improvement Fund of IA B of CFD No. 2002-4 from July 20, 2013 through June 30, 2022 for the Authorized Facilities.

2013 Improvement Fund (2013 Bonds)

Initial Deposit from Bond Proceeds		\$719,247.79
Previously Accrued	\$1,111.41	
Previously Expended	(720,353.18)	
Balance as of July 1, 2021		\$6.02
Accruals		\$0.00
Investment Earnings	\$0.00	
Expenditures		\$0.00
Balance as of June 30, 2022		\$6.02

D. Special Taxes

IA B of CFD No. 2002-4 has covenanted to levy the Annual Special Taxes in accordance with the RMA. The Annual Special Taxes collected can only be used for the purposes as outlined in the 2006 FAA. All Special Tax accounts related to the 2006 Bond issuance were closed and all funds expended. For an accounting of accruals and expenditures within these accounts please refer to the Administration Reports of IA B of CFD No. 2002-4 prior years. The table below presents a detailed accounting of the Annual Special Taxes collected and expended by IA B of CFD No. 2002-4 within the Special Tax Fund created under the 2013 FAA of the 2013 Bonds.

Special Tax Fund (2013 Bonds)

Balance as of February 21, 2013		\$0.00
Previously Accrued	\$4,293,322.65	
Previously Expended	(3,876,534.74)	
Balance as of July 1, 2021		\$416,787.91
Accruals		\$484,930.40
Special Tax Deposits	\$481,204.59	
Investment Earnings	50.73	
Transfer from Surplus Fund	3,675.08	
Expenditures		(\$480,426.92)
Transfer to CFD Project Custody Fund	(\$77,940.93)	
Transfer to Bond Fund	(402,485.99)	
Balance as of June 30, 2022		\$421,291.39

Special Taxes collected in excess of annual debt service obligations are transferred to the School District to be held and utilized for the construction of Authorized Facilities. This fund has since been closed and all funds expended. For an accounting of accruals and expenditures within this account, please refer to the Administration Reports for IA B of CFD No. 2002-4 for prior years.

E. Pooled Special Tax Accounts

On April 30, 2009 the School District issued the Certificates of Participation (2009 School Facility Bridge Funding Program) in the amount of \$56,000,000 (“2009 COPs”). The proceeds of the 2009 COPs were used to complete improvements at Dorothy McElhinney Middle School and Murrieta Mesa High School (“2009 Projects”). On September 1, 2011 all but \$14,300,000 of the 2009 COPs were prepaid with a portion of the funds received from the State of California for the 2009 Projects. The remaining State funds were budgeted to be used to i) purchase and install solar panels at several school sites, ii) purchase several Compressed Natural Gas (“CNG”) fueled buses, and iii) install a CNG fueling station (“Energy Projects”). On December 8, 2016 the Refunding Certificates of Participation, Series 2016 (“2016 COPs”, collectively, with the 2009 COPs the “COPs”) were issued in the amount of \$19,405,000 to (i) prepay, on an advance basis, the 2009 COPs, (ii) finance a portion of the costs of replacing, upgrading, and installing certain technology infrastructure projects, including data cabling, electrical and associated equipment, and (iii) pay the costs incurred in connection with the execution and delivery of the 2016 COPs.

As of December 2016, the Sinking Fund Account was closed, and all funds expended. For an accounting of accruals and expenditures within this account, please refer to the Administration Reports for IA B of CFD No. 2002-4 in Fiscal Year prior years. Special Taxes remaining after all individual obligations are paid are being used to make Lease Payments on the 2016 COPs and fund projects within the authorized facilities of each participating CFD. The pooled CFD Project Fund Custody Account collects the initial transfers of remaining Special Taxes from the participating CFDs and such funds are then either transferred to the 2016 COPs Custody Account to make Lease Payments on the 2016 COPs or are utilized to fund authorized facilities.

The table below presents a detailed listing of the sources and uses of CFD Special Taxes associated with the pooled CFD Project Fund Custody Account through June 30, 2022.

Pooled CFD Project Fund Custody Account

Balance as of April 30, 2012		\$0.00
Previously Accrued	\$12,185,595.70	
Previously Expended	(10,577,896.44)	
Balance as of July 1, 2021		\$1,607,699.26
Accruals		\$3,105,071.76
Investment Earnings	\$948.03	
Transfer from CFD No. 90-1 Special Tax Fund	247,025.41	
Transfer from CFD No. 98-1 Special Tax Fund	253,378.50	
Transfer from CFD No. 98-2 Special Tax Fund	131,892.43	
Transfer from CFD No. 98-3 Special Tax Fund	191,531.82	
Transfer from CFD No. 99-1 IA A Special Tax Remainder Fund	148,381.80	
Transfer from CFD No. 99-1 IA B Special Tax Remainder Fund	77,092.67	
Transfer from CFD No. 2000-1 Special Tax Remainder Fund	127,031.49	
Transfer from CFD No. 2000-2 Special Tax Remainder Fund	136,056.94	
Transfer from CFD No. 2001-1 Special Tax Remainder Fund	42,130.85	
Transfer from CFD No. 2001-2 Special Tax Fund	141,097.49	
Transfer from CFD No. 2001-4 Special Tax Remainder Fund	81,089.29	
Transfer from CFD No. 2002-1 Special Tax Remainder Fund	44,462.49	
Transfer from CFD No. 2002-2 Special Tax Remainder Fund	29,917.29	
Transfer from CFD No. 2002-3 Special Tax Remainder Fund	46,366.52	
Transfer from CFD No. 2002-4 IA A Special Tax Fund	64,530.95	
Transfer from CFD No. 2002-4 IA B Special Tax Fund	77,940.93	
Transfer from CFD No. 2002-5 IA A Special Tax Fund	241,062.79	
Transfer from CFD No. 2005-IA B Special Tax Remainder Fund	157,871.59	
Transfer from CFD No. 2003-1 Special Tax Remainder Fund	43,296.56	
Transfer from CFD No. 2003-2 Special Tax Remainder Fund	32,581.86	
Transfer from CFD No. 2003-3 2013 Special Tax Fund	34,326.61	
Transfer from CFD No. 2003-4 Special Tax Fund	90,828.88	
Transfer from CFD No. 2004-1 Special Tax Fund	38,677.07	
Transfer from CFD No. 2006-1 IA A Special Tax Remainder Fund	65,220.87	
Transfer from CFD No. 2006-1 IA B Special Tax Remainder Fund	83,235.50	
Transfer from CFD No. 2006-1 IA C Special Tax Remainder Fund	174,552.76	
Transfer from CFD No. 2014-1 Special Tax Fund	48,922.50	
Transfer from CFD No. 2014-2 Special Tax Fund	26,782.02	
Transfer from CFD No. 2014-3 Special Tax Fund	33,416.26	
Transfer from CFD No. 2014-1 Custody Account	3,122.89	
Transfer from CFD No. 2014-4 Custody Account	190,298.70	
Transfer from CFD No. 2018-1 Custody Account	42,545.18	
Expenditures		(\$822,697.44)
Transfer to 2016 COPs Custody Account	(\$822,697.44)	
Balance as of June 30, 2022		\$3,890,073.58

The table below presents a detailed listing of the sources and uses of the 2016 COPs Custody Account through June 30, 2022.

2016 COPs Custody Account

Balance as of December 8, 2016		\$0.00
Previously Accrued	\$4,403,338.09	
Previously Expended	(4,117,846.63)	
Balance as of July 1, 2021		\$285,491.46
Accruals		\$822,784.65
Investment Earnings	\$87.21	
Transfer from CFD Project Fund	822,697.44	
Expenditures		(\$775,462.52)
Administrative Expenses	(\$2,000.00)	
Transfer to 2016 COP Base Rental Fund	(773,462.52)	
Balance as of June 30, 2022		\$332,813.59

V. Minimum Annual Special Tax Requirement

This Section outlines the calculation of the Minimum Annual Special Requirement of IA B of CFD No. 2002-4 based on the financial obligations for Fiscal Year 2022/2023.

A. Minimum Annual Special Requirement

The Annual Special Taxes of IA B of CFD No. 2002-4 are calculated in accordance and pursuant to the RMA. Pursuant to the FAA, any amounts not required to pay Administrative Expenses and Debt Service on the 2013 Bonds may be used to purchase/construct the Authorized Facilities of IA B of CFD No. 2002-4. The table below shows the calculation of the Minimum Annual Special Requirement for Fiscal Year 2022/2023.

Minimum Annual Special Requirement for IA B of CFD No. 2002-4	
Fiscal Year 2021/2022 Remaining Sources	\$423,951.05
Balance of Special Tax Fund	\$421,291.39
Anticipated Special Taxes	2,659.66
Fiscal Year 2022/2022 Remaining Obligations	(\$375,580.31)
September 1, 2022 Interest Payment	(\$107,190.63)
September 1, 2022 Principal Payment	(190,000.00)
2016 COPs Contribution	(78,389.68)
Fiscal Year 2021/2022 Surplus (Reserve Fund Draw)	\$48,370.74
Fiscal Year 2022/2023 Obligations	(\$532,078.16)
Administrative Expense Budget	(\$35,000.00)
Anticipated Special Tax Delinquencies ^[1]	(48,370.74)
March 1, 2023 Interest Payment	(103,865.63)
September 1, 2023 Interest Payment	(103,865.63)
September 1, 2023 Principal Payment	(195,000.00)
2016 COPs Contribution	(45,976.16)
Fiscal Year 2022/2023 Minimum Annual Special Tax Requirement	\$483,707.42

[1] The budget for anticipated delinquencies has been increased by withholding a portion of the 2022/2023 Special Tax levy. This has been done to protect the payment of the 2016 COPs Contribution.

B. Administrative Expense Budget

Each year a portion of the Annual Special Tax levy is used to pay for the administrative expenses incurred by the School District to levy the Annual Special Tax and administer the debt issued to finance Authorized Facilities. The estimated Fiscal Year 2022/2023 Administrative Expenses are shown in the table below.

**Fiscal Year 2022/2023 Budgeted
Administrative Expenses**

Administrative Expense	Budget
District Staff and Expenses	\$12,824.48
Consultant/Trustee Expenses	17,000.00
County Tax Collection Fees	175.52
Contingency for Legal	5,000.00
Total Expenses	\$35,000.00

VI. Special Tax Classification

Each Fiscal Year, parcels within IA B of CFD No. 2002-4 are assigned an Annual Special Tax classification based on the parameters outlined in the RMA. This Section outlines how parcels are classified and the amount of Taxable Property within IA B of CFD No. 2002-4.

A. Developed Property

Building Permits have been issued for 241 Units by the County within IA B of CFD No. 2002-4. According to the County Assessor, all property zoned for residential development within IA B of CFD No. 2002-4 has been built and completed. The table below summarizes the Special Tax classification for the Units within IA B of CFD No. 2002-4.

**Fiscal Year 2022/2023
Special Tax Classification**

Tax Class	Land Use	Number of Units/Acres
1	Residential Property	0 Units
2	Residential Property	23 Units
3	Residential Property	67 Units
4	Residential Property	16 Units
5	Residential Property	135 Units
<i>Subtotal Residential Property</i>		<i>241 Units</i>
NA	Undeveloped Property	0.00 Acres
<i>Subtotal Undeveloped Property</i>		<i>0.00 Acres</i>
Total		241 Units

VII. Fiscal Year 2022/2023 Special Tax Levy

Each Fiscal Year, the Special Tax is levied up to the maximum rate, as determined by the provisions of the RMA, in the amount needed to satisfy the Minimum Annual Special Requirement.

Based on the Minimum Annual Special Requirement listed in Section V, IA B of CFD No. 2002-4 will levy at the Assigned Annual Special Tax rate allowable for each parcel classified as Developed Property. The special tax roll, containing a listing of each parcel's Assigned Special Tax and Maximum Special Tax, calculated pursuant to the RMA, can be found attached as Exhibit G.

A summary of the Annual Special Tax levy for Fiscal Year 2022/2023 by Special Tax classification as determined by the RMA for IA B of CFD No. 2002-4 can be found on the table below.

Fiscal Year 2022/2023 Annual Special Tax Levy

Tax Class/Land Use	Sq. Footage	Number of Units/Acres	Assigned Annual Special Tax Rate	Total Assigned Annual Special Taxes
1	< 2,600 Sq. Ft.	0 Units	\$1,540.66 Per Unit	\$0.00
2	2,600 Sq. Ft. to 2,800 Sq. Ft.	23 Units	\$1,768.66 Per Unit	40,679.18
3	2,801 Sq. Ft. to 3,000 Sq. Ft.	67 Units	\$1,882.68 Per Unit	126,139.56
4	3,001 Sq. Ft. to 3,200 Sq. Ft.	16 Units	\$1,996.68 Per Unit	31,946.88
5	> 3,200 Sq. Ft.	135 Units	\$2,110.68 Per Unit	284,941.80
Developed Property		241 Units	NA	\$483,707.42
Undeveloped Property		0.00 Acres	\$0.00 Per Acre	\$0.00
Total		241 Units		\$483,707.42

https://calschools.sharepoint.com/cfs/unregulated/murrieta_valley_usd/developer_revenue/cfd_admin/cfd_no_2002-4_ia_b/fy_2223/murrieta_valley_usd_cfd2002-4ia_b_fy20222023_specialtaxreport_d1.docx

Exhibit A

Rate and Method of Apportionment

**RATE AND METHOD OF APPORTIONMENT FOR
IMPROVEMENT AREA B OF
COMMUNITY FACILITIES DISTRICT NO. 2002-4
OF MURRIETA VALLEY UNIFIED SCHOOL DISTRICT**

The following sets forth the Rate and Method of Apportionment for the levy and collection of Special Taxes of Murrieta Valley Unified School District ("School District") in Improvement Area ("IA") B of Community Facilities District ("CFD") No. 2002-4. An Annual Special Tax shall be levied on and collected in IA B of CFD No. 2002-4 each Fiscal Year, in an amount determined through the application of the Rate and Method of Apportionment described below. All of the real property in IA B of CFD No. 2002-4, unless exempted by law or by the provisions hereof, shall be taxed for the purposes, to the extent, and in the manner herein provided.

**SECTION A
DEFINITIONS**

The terms hereinafter set forth have the following meanings:

"Acreage" means the land area of an Assessor's Parcel as shown on an Assessor's Parcel Map or as calculated from the applicable Assessor's Parcel Map by the Board.

"Act" means the Mello-Roos Communities Facilities Act of 1982 as amended, being Chapter 2.5, Division 2 of Title 5 of the Government Code of the State of California.

"Administrative Expenses" means any ordinary and necessary expense incurred by the School District on behalf of IA B of CFD No. 2002-4 related to the determination of the amount of the levy of Special Taxes, the collection of Special Taxes including the expenses of collecting delinquencies, the administration of Bonds, the payment of salaries and benefits of any School District employee whose duties are directly related to the administration of IA B of CFD No. 2002-4, and costs otherwise incurred in order to carry out the authorized purposes of IA B of CFD No. 2002-4.

"Annual Special Tax" means the Special Tax actually levied in any Fiscal Year on any Assessor's Parcel.

"Assessor's Parcel" means a lot or parcel of land designated on an Assessor's Parcel Map with an assigned Assessor's Parcel Number within the boundaries of IA B of CFD No. 2002-4.

"Assessor's Parcel Map" means an official map of the Assessor of the County designating parcels by Assessor's Parcel Number.

"Assessor's Parcel Number" means that number assigned to an Assessor's Parcel by the County for purposes of identification.

"Assigned Annual Special Tax" means the Special Tax of that name described in Section D.

"Backup Annual Special Tax" means the Special Tax of that name described in Section E.

"Board" means the Board of Education of Murrieta Valley Unified School District or its designee as the legislative body of IA B of CFD No. 2002-4.

"Bonds" means any obligation to repay a sum of money, including obligations in the form of bonds, notes, certificates of participation, long-term leases, loans from government agencies, or loans from banks, other financial institutions, private businesses, or individuals, or long-term contracts, or any refunding thereof, which obligation may be incurred by IA B of CFD No. 2002-4 or the School District.

"Building Permit" means a permit for the construction of one or more Units. For purposes of this definition, "Building Permit" shall not include permits for construction or installation of commercial/industrial structures, parking structures, retaining walls, utility improvements, or other such improvements not intended for human habitation.

"Building Square Footage" or **"BSF"** means the square footage of assessable internal living space of a Unit, exclusive of any carports, walkways, garages, overhangs, patios, enclosed patios, detached accessory structure, or other structures not used as living space, as determined by reference to the Building Permit for such Unit.

"Calendar Year" means the period commencing January 1 of any year and ending the following December 31.

"County" means the County of Riverside

"Developed Property" means all Assessor's Parcels of Taxable Property for which Building Permits were issued on or before May 1 of the prior Fiscal Year, provided that such Assessor's Parcels were created on or before January 1 of the prior Fiscal Year and that each such Assessor's Parcel is associated with a Lot, as determined reasonably by the Board.

"Exempt Property" means all Assessor's Parcels designated as being exempt from Special Taxes in Section J.

"Final Map" means a final tract map, parcel map, lot line adjustment, or functionally equivalent map or instrument that creates building sites, recorded in the County Office of the Recorder.

"Fiscal Year" means the period commencing on July 1 of any year and ending the following June 30.

"Lot" means an individual legal lot created by a Final Map for which a Building Permit could be issued.

"Maximum Special Tax" means the maximum Special Tax, determined in accordance with Section C, that can be levied by IA B of CFD No. 2002-4 in any Fiscal Year on any Assessor's Parcel.

"Minimum Annual Special Tax Requirement" means the amount required in any Fiscal Year to pay: (i) the debt service or the periodic costs on all outstanding Bonds, (ii) Administrative Expenses of IA B of CFD No. 2002-4, (iii) the costs associated with the release of funds from an escrow account, and (iv) any amount required to establish or replenish any reserve funds

established in association with the Bonds, less (v) any amount available to pay debt service or other periodic costs on the Bonds pursuant to any applicable bond indenture, fiscal agent agreement, or trust agreement.

"Partial Prepayment Amount" means the amount required to prepay a portion of the Annual Special Tax obligation for an Assessor's Parcel, as described in Section H.

"Prepayment Amount" means the amount required to prepay the Annual Special Tax obligation in full for an Assessor's Parcel, as described in Section G.

"Proportionately" means that the ratio of the actual Annual Special Tax levy to the applicable Special Tax is equal for all applicable Assessor's Parcels.

"Special Tax" means any of the special taxes authorized to be levied by IA B of CFD No. 2002-4 pursuant to the Act.

"Taxable Property" means all Assessor's Parcels which are not Exempt Property.

"Undeveloped Property" means all Assessor's Parcels of Taxable Property which are not Developed Property.

"Unit" means each separate residential dwelling unit which comprises an independent facility capable of conveyance separate from adjacent residential dwelling units.

SECTION B CLASSIFICATION OF ASSESSOR'S PARCELS

For each Fiscal Year, beginning with Fiscal Year 2002-03, each Assessor's Parcel within IA B of CFD No. 2002-4 shall be classified as Taxable Property or Exempt Property. Furthermore, each Assessor's Parcel of Taxable Property shall be classified as Developed Property or Undeveloped Property.

SECTION C MAXIMUM SPECIAL TAXES

1. Developed Property

The Maximum Special Tax for each Assessor's Parcel classified as Developed Property for any Fiscal Year shall be the amount determined by the greater of (i) the application of the Assigned Annual Special Tax or (ii) the application of the Backup Annual Special Tax.

2. Undeveloped Property

The Maximum Special Tax for each Assessor's Parcel classified as Undeveloped Property for any Fiscal Year shall be the amount determined by the application of the Assigned Annual Special Tax.

SECTION D ASSIGNED ANNUAL SPECIAL TAXES

1. Developed Property

The Assigned Annual Special Tax for each Assessor's Parcel of Developed Property in any Fiscal Year shall be the amount determined by reference to Table 1.

TABLE 1

<i>ASSIGNED ANNUAL SPECIAL TAX FOR DEVELOPED PROPERTY</i>	
Building Square Feet	Assigned Annual Special Tax
< 2,600 BSF	\$1,540.66 per Unit
2,600 – 2,800 BSF	\$1,768.67 per Unit
2,801 – 3,000 BSF	\$1,882.68 per Unit
3,001 – 3,200 BSF	\$1,996.69 per Unit
>3,200 BSF	\$2,110.69 per Unit

2. Undeveloped Property

Each Fiscal Year, each Assessor's Parcel of Undeveloped Property shall be subject to an Assigned Annual Special Tax. The Assigned Annual Special Tax rate for an Assessor's Parcel classified as Undeveloped Property in any Fiscal Year shall be \$10,219.81 per acre of Acreage.

SECTION E BACKUP ANNUAL SPECIAL TAXES

Each Fiscal Year, each Assessor's Parcel of Developed Property shall be subject to a Backup Annual Special Tax. In each Fiscal Year, the Backup Annual Special Tax rate for Developed Property within a Final Map shall be the rate per Lot calculated according to the following formula:

$$B = \frac{U \times A}{L}$$

The terms above have the following meanings:

B	=	Backup Annual Special Tax per Lot in each Fiscal Year
U	=	Assigned Annual Special Tax per acre of Acreage for Undeveloped Property
A	=	Acreage of Taxable Property in such Final Map, as determined by the Board pursuant to Section J
L	=	Lots in the Final Map

Notwithstanding the foregoing, if all or any portion of the Final Map(s) described in the preceding paragraph is subsequently changed or modified, then the Backup Annual Special Tax for each Assessor's Parcel of Developed Property in such Final Map area that is changed or modified shall be a rate per square foot of Acreage calculated as follows:

1. Determine the total Backup Annual Special Taxes anticipated to apply to the changed or modified Final Map area prior to the change or modification.
2. The result of paragraph 1 above shall be divided by the Acreage of Taxable Property which is ultimately expected to exist in such changed or modified Final Map area, as reasonably determined by the Board.
3. The result of paragraph 2 above shall be divided by 43,560. The result is the Backup Annual Special Tax per square foot of Acreage which shall be applicable to Assessor's Parcels of Developed Property in such changed or modified Final Map area for all remaining Fiscal Years in which the Special Tax may be levied.

SECTION F METHOD OF APPORTIONMENT OF THE ANNUAL SPECIAL TAX

Commencing Fiscal Year 2002-03 and for each subsequent Fiscal Year, the Board shall levy Annual Special Taxes as follows:

- Step One: The Board shall levy an Annual Special Tax on each Assessor's Parcel of Developed Property in an amount equal to the Assigned Annual Special Tax applicable to each such Assessor's Parcel.
- Step Two: If the sum of the amounts collected in step one is insufficient to satisfy the Minimum Annual Special Tax Requirement, then the Board shall additionally levy an Annual Special Tax Proportionately on each Assessor's Parcel of Undeveloped Property, up to the Assigned Annual Special Tax applicable to each such Assessor's Parcel, to satisfy the Minimum Annual Special Tax Requirement.
- Step Three: If the sum of the amounts collected in steps one and two is insufficient to satisfy the Minimum Annual Special Tax Requirement, then the Board shall additionally levy an Annual Special Tax Proportionately on each Assessor's Parcel of Developed Property, up to the Maximum Special Tax applicable to each such Assessor's Parcel, to satisfy the Minimum Annual Special Tax Requirement.

SECTION G PREPAYMENT OF ANNUAL SPECIAL TAXES

The Annual Special Tax obligation of an Assessor's Parcel, as calculated in Section G.2. below, may be prepaid in full at the times and under the conditions set forth in this Section G, provided that there are no delinquent Special Taxes, penalties, or interest charges outstanding with respect to such Assessor's Parcel at the time the Annual Special Tax obligation would be prepaid.

1. **Prepayment Times and Conditions**

a. **Undeveloped Property**

Prior to the issuance of a Building Permit for the construction of a production Unit on a Lot within a Final Map area, the owner of no less than all the Taxable Property within such Final Map area may elect in writing to the Board to prepay the Annual Special Tax obligations for all the Assessor's Parcels within such Final Map area in full, as calculated in Section G.2. below. The prepayment of the Annual Special Tax obligation for each such Assessor's Parcel shall be collected prior to the issuance of the Building Permit with respect to such Assessor's Parcel.

b. **Developed Property**

In any Fiscal Year following the first Fiscal Year in which such Assessor's Parcel was classified as Developed Property, the owner of such an Assessor's Parcel may prepay the Annual Special Tax obligation for such Assessor's Parcel in full, as calculated in Section G.2. below.

2. **Prepayment Amount**

The Prepayment Amount for an Assessor's Parcel eligible for prepayment shall be determined as described below.

a. **Prior to Issuance of Bonds**

The Prepayment Amount for each applicable Assessor's Parcel prior to the issuance of Bonds shall be determined by reference to Table 2.

TABLE 2

<i>PREPAYMENT AMOUNT</i>	
Building Square Feet	Prepayment Amount
< 2,600 BSF	\$13,197.11 per Unit
2,600 – 2,800 BSF	\$13,966.49 per Unit
2,801 – 3,000 BSF	\$14,351.18 per Unit
3,001 – 3,200 BSF	\$14,735.87 per Unit
>3,200 BSF	\$15,120.56 per Unit

b. **Subsequent to Issuance of Bonds**

Subsequent to the issuance of Bonds, the Prepayment Amount for each applicable Assessor's Parcel shall be calculated according to the following formula (capitalized terms defined below):

	Bond Redemption Amount
plus	Redemption Premium
plus	Defeasance
plus	Administrative Fee
less	<u>Reserve Fund Credit</u>
equals	Prepayment Amount

As of the date of prepayment, the Prepayment Amount shall be calculated as follows:

1. For Assessor's Parcels of Developed Property, compute the sum of the Assigned Annual Special Taxes and the Backup Annual Special Taxes applicable to the Assessor's Parcel. For Assessor's Parcels of Undeveloped Property, compute the sum of the Assigned Annual Special Taxes and the Backup Annual Special Taxes applicable to the Assessor's Parcel as though it was already designated as Developed Property, based upon the Building Permit issued or to be issued for that Assessor's Parcel.
2. For each Assessor's Parcel of Developed Property or Undeveloped Property to be prepaid, (a) divide the sum of the Assigned Annual Special Taxes computed pursuant to paragraph 1 for such Assessor's Parcel by the sum of the estimated Assigned Annual Special Taxes applicable to all Assessor's Parcels of Developed Property at build out, as reasonably determined by the Board, and (b) divide the sum of Backup Annual Special Tax computed pursuant to paragraph 1 for such Assessor's Parcel by the sum of the estimated Backup Annual Special Taxes applicable to all Assessor's Parcels of Developed Property at build out, as reasonably determined by the Board.
3. The amount determined pursuant to Section G.2.b. shall be (a) increased by the portion of the Bonds allocable to costs of issuance, reserve fund deposits, and capitalized interest with respect to the applicable Assessor's Parcel and (b) reduced by the amount of regularly retired principal which is allocable to the applicable Assessor's Parcel, as determined by the Board. The result is the "Outstanding Gross Prepayment Amount." In no event shall any Annual Special Taxes determined to have been used to make a regularly scheduled principal payment on the Bonds be adjusted for any increase in any cost index or other basis subsequent to the date of the applicable principal payment.
4. Multiply the larger quotient computed pursuant to paragraph 2(a) or 2(b) by the face value of all outstanding Bonds. If the product is greater than the Outstanding Gross Prepayment Amount, then the product shall be the "Bond Redemption Amount." If the product is less than the Outstanding Gross Prepayment Amount, then the Outstanding Gross Prepayment Amount shall be the "Bond Redemption Amount."

5. Multiply the Bond Redemption Amount by the applicable redemption premium, if any, on the outstanding Bonds to be redeemed with the proceeds of the Bond Redemption Amount. This product is the "Redemption Premium."
6. Compute the amount needed to pay interest on the Bond Redemption Amount, the Redemption Premium, and the Reserve Fund Credit (see step 10) to be redeemed with the proceeds of the Prepayment Amount until the earliest call date for the outstanding Bonds.
7. Estimate the amount of interest earnings to be derived from the reinvestment of the Bond Redemption Amount plus the Redemption Premium until the earliest call date for the outstanding Bonds.
8. Subtract the amount computed pursuant to paragraph 7 from the amount computed pursuant to paragraph 6. This difference is the "Defeasance."
9. Estimate the administrative fees and expenses associated with the prepayment, including the costs of computation of the Prepayment Amount, the costs of redeeming Bonds, and the costs of recording any notices to evidence the prepayment and the redemption. This amount is the "Administrative Fee."
10. Calculate the "Reserve Fund Credit" as the lesser of: (a) the expected reduction in the applicable reserve requirements, if any, associated with the redemption of outstanding Bonds as a result of the prepayment, or (b) the amount derived by subtracting the new reserve requirements in effect after the redemption of outstanding Bonds as a result of the prepayment from the balance in the applicable reserve funds on the prepayment date. Notwithstanding the foregoing, if the reserve fund requirement is satisfied by a surety bond or other instrument at the time of the prepayment, then no Reserve Fund Credit shall be given. Notwithstanding the foregoing, the Reserve Fund Credit shall in no event be less than 0.
11. The Prepayment Amount is equal to the sum of the Bond Redemption Amount, the Redemption Premium, the Defeasance, and the Administrative Fee, less the Reserve Fund Credit.

With respect to an Annual Special Tax obligation that is prepaid pursuant to this Section G, the Board shall indicate in the records of IA B of CFD No. 2002-4 that there has been a prepayment of the Annual Special Tax obligation and shall cause a suitable notice to be recorded in compliance with the Act to indicate the prepayment of the Annual Special Tax obligation and the release of the Annual Special Tax lien on such Assessor's Parcel, and the obligation of such Assessor's Parcel to pay such Annual Special Taxes shall cease.

Notwithstanding the foregoing, no prepayment will be allowed unless the amount of Annual Special Taxes that may be levied on Taxable Property, net of Administrative Expenses, shall be at least 1.1 times the regularly scheduled annual interest and principal payments on all currently outstanding Bonds in each future Fiscal Year and such prepayment will not impair the security of all currently outstanding Bonds, as reasonably determined by the Board.

SECTION H

PARTIAL PREPAYMENT OF ANNUAL SPECIAL TAXES

The Annual Special Tax obligation of an Assessor's Parcel, as calculated in Section H.2. below, may be partially prepaid at the times and under the conditions set forth in this section, provided that there are no delinquent Special Taxes, penalties, or interest charges outstanding with respect to such Assessor's Parcel at the time the Annual Special Tax obligation would be prepaid.

1. Partial Prepayment Times and Conditions

Prior to the issuance of the first Building Permit for the construction of a production Unit on a Lot within a Final Map area, the owner of no less than all the Taxable Property within such Final Map area may elect in writing to the Board to prepay a portion of the Annual Special Tax obligations for all the Assessor's Parcels within such Final Map area, as calculated in Section H.2. below. The partial prepayment of each Annual Special Tax obligation shall be collected prior to the issuance of the first Building Permit with respect to each Assessor's Parcel.

2. Partial Prepayment Amount

The Partial Prepayment Amount shall be calculated according to the following formula:

$$PP = P_G \times F$$

The terms above have the following meanings:

PP = the Partial Prepayment Amount
P_G = the Prepayment Amount calculated according to Section G
F = the percent by which the owner of the Assessor's Parcel is partially prepaying the Annual Special Tax obligation

3. Partial Prepayment Procedures and Limitations

With respect to any Assessor's Parcel that is partially prepaid, the Board shall indicate in the records of IA B of CFD No. 2002-4 that there has been a partial prepayment of the Annual Special Tax obligation and shall cause a suitable notice to be recorded in compliance with the Act to indicate the partial prepayment of the Annual Special Tax obligation and the partial release of the Annual Special Tax lien on such Assessor's Parcel, and the obligation of such Assessor's Parcel to pay such prepaid portion of the Annual Special Tax shall cease.

Notwithstanding the foregoing, no partial prepayment will be allowed unless the amount of Annual Special Taxes that may be levied on Taxable Property after such partial prepayment, net of Administrative Expenses, shall be at least 1.1 times the regularly scheduled annual interest and principal payments on all currently outstanding Bonds in each future Fiscal Year.

SECTION I TERMINATION OF SPECIAL TAX

Annual Special Taxes shall be levied for a period of thirty-five (35) Fiscal Years after Bonds have been issued, provided that Annual Special Taxes shall not be levied after Fiscal Year 2040-41.

SECTION J EXEMPTIONS

The Board shall classify as Exempt Property (i) Assessor's Parcels owned by the State of California, Federal or other local governments, (ii) Assessor's Parcels which are used as places of worship and are exempt from *ad valorem* property taxes because they are owned by a religious organization, (iii) Assessor's Parcels used exclusively by a homeowners' association, (iv) Assessor's Parcels with public or utility easements making impractical their utilization for other than the purposes set forth in the easement, (v) Assessor's Parcels developed or expected to be developed exclusively for non-residential use, including any use directly servicing any non-residential property, such as parking, as reasonably determined by the Board, and (vi) any other Assessor's Parcels at the reasonable discretion of the Board, provided that no such classification would reduce the sum of all Taxable Property to less than 44.39 acres of Acreage. Notwithstanding the above, the Board shall not classify an Assessor's Parcel as Exempt Property if such classification would reduce the sum of all Taxable Property to less than 44.39 acres of Acreage. Assessor's Parcels which cannot be classified as Exempt Property because such classification would reduce the Acreage of all Taxable Property to less than 44.39 acres of Acreage will continue to be classified as Developed Property or Undeveloped Property, as applicable, and will continue to be subject to Special Taxes accordingly.

SECTION K APPEALS

Any property owner claiming that the amount or application of the Special Tax is not correct may file a written notice of appeal with the Board not later than twelve months after having paid the first installment of the Special Tax that is disputed. A representative(s) of IA B of CFD No. 2002-4 shall promptly review the appeal, and if necessary, meet with the property owner, consider written and oral evidence regarding the amount of the Special Tax, and rule on the appeal. If the representative's decision requires that the Special Tax for an Assessor's Parcel be modified or changed in favor of the property owner, a cash refund shall not be made (except for the last year of levy), but an adjustment shall be made to the Annual Special Tax on that Assessor's Parcel in the subsequent Fiscal Year(s).

SECTION L

MANNER OF COLLECTION

The Annual Special Tax shall be collected in the same manner and at the same time as ordinary *ad valorem* property taxes, provided, however, that IA B of CFD No. 2002-4 may collect Annual Special Taxes at a different time or in a different manner if necessary to meet its financial obligations.

K:\Clients2\MURR_VAL.USD\MELLO\KymI-new CFD\RMA1_iab.doc

Exhibit B

CFD Boundary Map

**PROPOSED BOUNDARIES OF
COMMUNITY FACILITIES DISTRICT NO. 2002-4
OF THE MURRIETA VALLEY UNIFIED SCHOOL DISTRICT
RIVERSIDE COUNTY
STATE OF CALIFORNIA**

(1) Filed in the office of the Clerk of the Board of
Education this ____ day of _____, 20____.

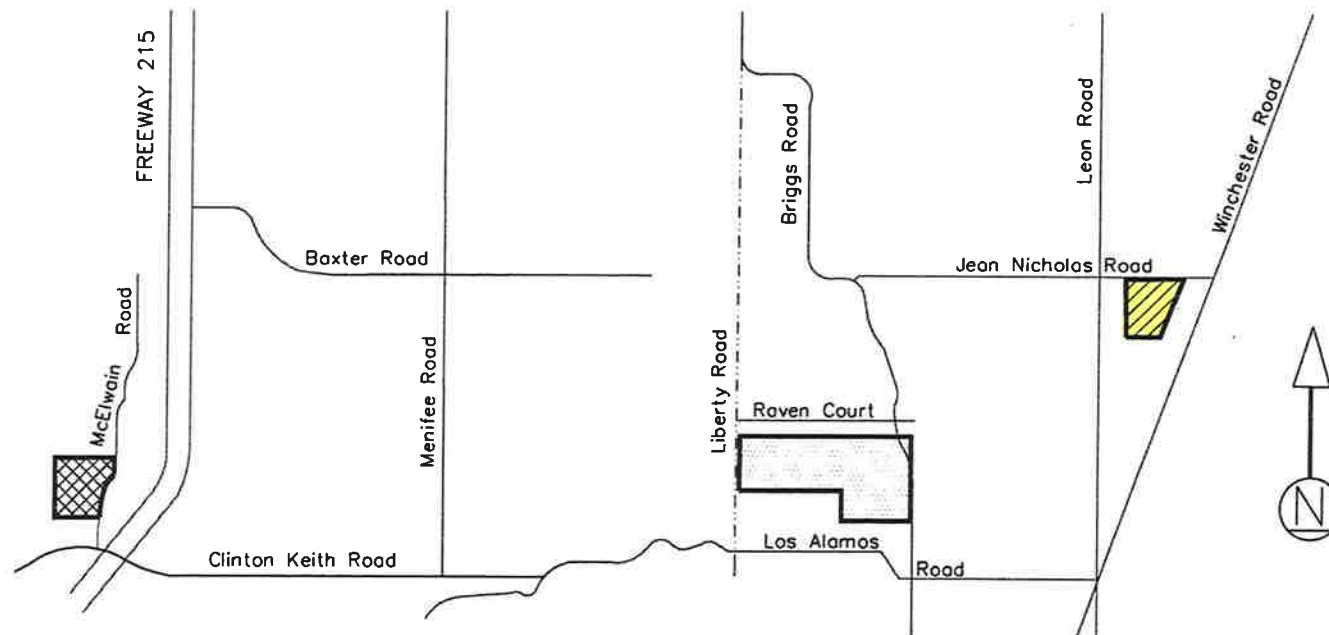
Clerk of the Board of Education

(2) I hereby certify that the within map showing the
proposed boundaries of Community Facilities
District No. 2002-4, Riverside County,
State of California, was approved by the Board of
Education at a regular meeting thereof, held on
this ____ day of _____, 20____, by
its Resolution No. _____.

Clerk of the Board of Education

(3) Filed this ____ day of _____, 20____, at
the hour of ____ o'clock __m, in Book _____
of Maps of Assessment and Community Facilities Districts
at page _____ and as Instrument No. _____, in
the office of the County Recorder of Riverside
County, State of California.

County Recorder of Riverside County



Reference is hereby made to
the Assessor maps of the
County of Riverside for an
exact description of the
lines and dimensions of
each lot and parcel.

PREPARED BY
DAVID TAUSSIG & ASSOCIATES, INC.

LEGEND

—	Boundaries of Community Facilities District No. 2002-4
	Improvement Area A
	Improvement Area B
	Improvement Area C

Exhibit C

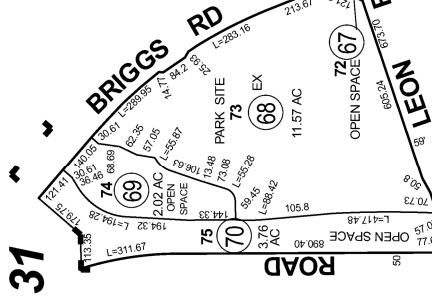
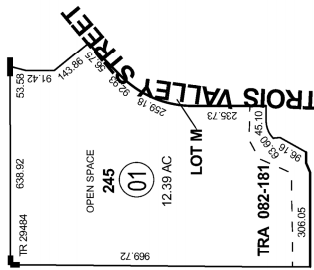
Assessor's Parcel Maps

THIS MAP WAS PREPARED FOR ASSESSMENT PURPOSES ONLY. NO LIABILITY IS ASSUMED - OR THE ACCURACY OF THE DATA SHOWN. ASSESSOR'S PARCEL MAY NOT COMPLY WITH LOCAL LOT-SPLIT OR BUILDING SITE ORDINANCES.

S 1/2, SEC. 31, T.6S., R.2W.

TRA. 082-056
082-181

480-10
467-23



CLINTON KEITH

LEON RD

MAX GILLISS BLVD

LIBERTY RD

LOS ALAMOS

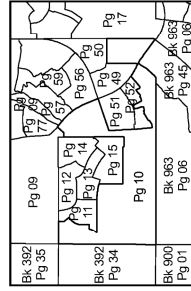
LOS ALAMOS ROAD



ASSESSOR'S MAP BK480 PG.10
Riverside County, Calif.

Jfernandez

Data*
G.L.O. PLAT
RS 16/72
RS 16/87
MB 445/47-52



Map Reference*
PM 81/96 PARCEL MAP NO. 15348
PM 95/58 - 61 PARCEL MAP NO. 16557
PM 122/2 - 3 PARCEL MAP NO. 19797
MB 387/81 TRACT MAP NO. 29484
MB 409/42 - 51 TRACT MAP NO. 30695-1
MB 409/52 - 59 TRACT MAP NO. 30695
MB 421/54 - 63 TRACT MAP NO. 30696-1

Date *	Old Number *	New Number *
2/13/2007	19	3435
2/13/2007	20	3637
2/13/2007	21	3840
2/13/2007	24	4143
2/13/2007	26	4448
2/13/2007	23	4852
2/13/2007	25, 27, 28, 35	53
2/13/2007	37, 39, 42, 45	53
2/13/2007	40, 41, 44, 47	54
2/13/2007	48, 50	54
2/13/2007	43, 51	55
2/13/2007	54	56, 59
2/13/2007	55	60, 63, 51, 52
2/13/2007	53	64, 50
2/13/2007	54	65, 51, 52
3/9/2007	28, 30, 32	61

Date *	Old Number *	New Number *
3/9/2007	31, 33, 46	62
3/9/2007	16, 18	63
3/9/2007	22, 38	64
12/26/2007	34, 35, 64, 66	65, 66
12/26/2007	63	65, 66
2/22/2008	71, 74	67, 72
2/22/2008	10	73
2/22/2008	2	75, 57
3/26/2009	60	76, 57
3/26/2009	3	78, 57
3/26/2009	62, 72	79
6/15/2009	79	963-450-44-18
13/2011	4	80, 57
48/2014	65	81, 57
8/11/2015	81	82, 57
12/4/2019	15	82, 57

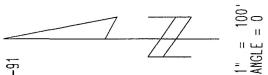
THIS MAP WAS PREPARED FOR ASSESSMENT PURPOSES ONLY. NO LIABILITY IS ASSIGNED FOR THE ACCURACY OF THE DATA SHOWN. ASSESSOR'S PARCEL MAY NOT COMPLY WITH LOCAL LOT-SPLIT OR BUILDING SITE ORDINANCES.

JAN 25 2007

POR. SW 31 T.6S., R.2W

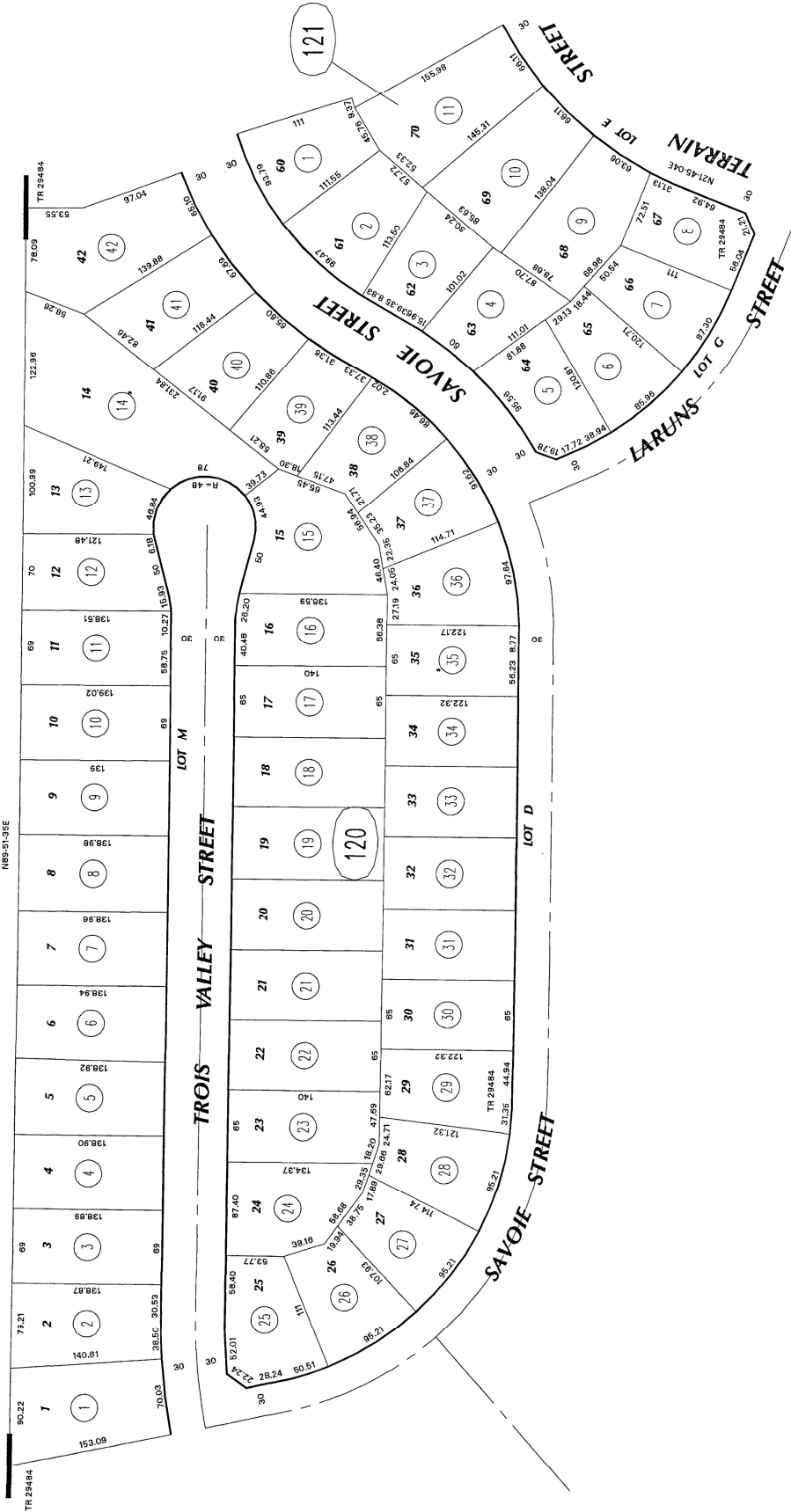
TRA 082-174

480-12
467-91



09

NB9-51-35E



11

13

ASSESSOR'S MAP BK480 PG.12
Riverside County, Calif.

MB 387/81-99 TRACT MAP NO. 29484

Sep 2006

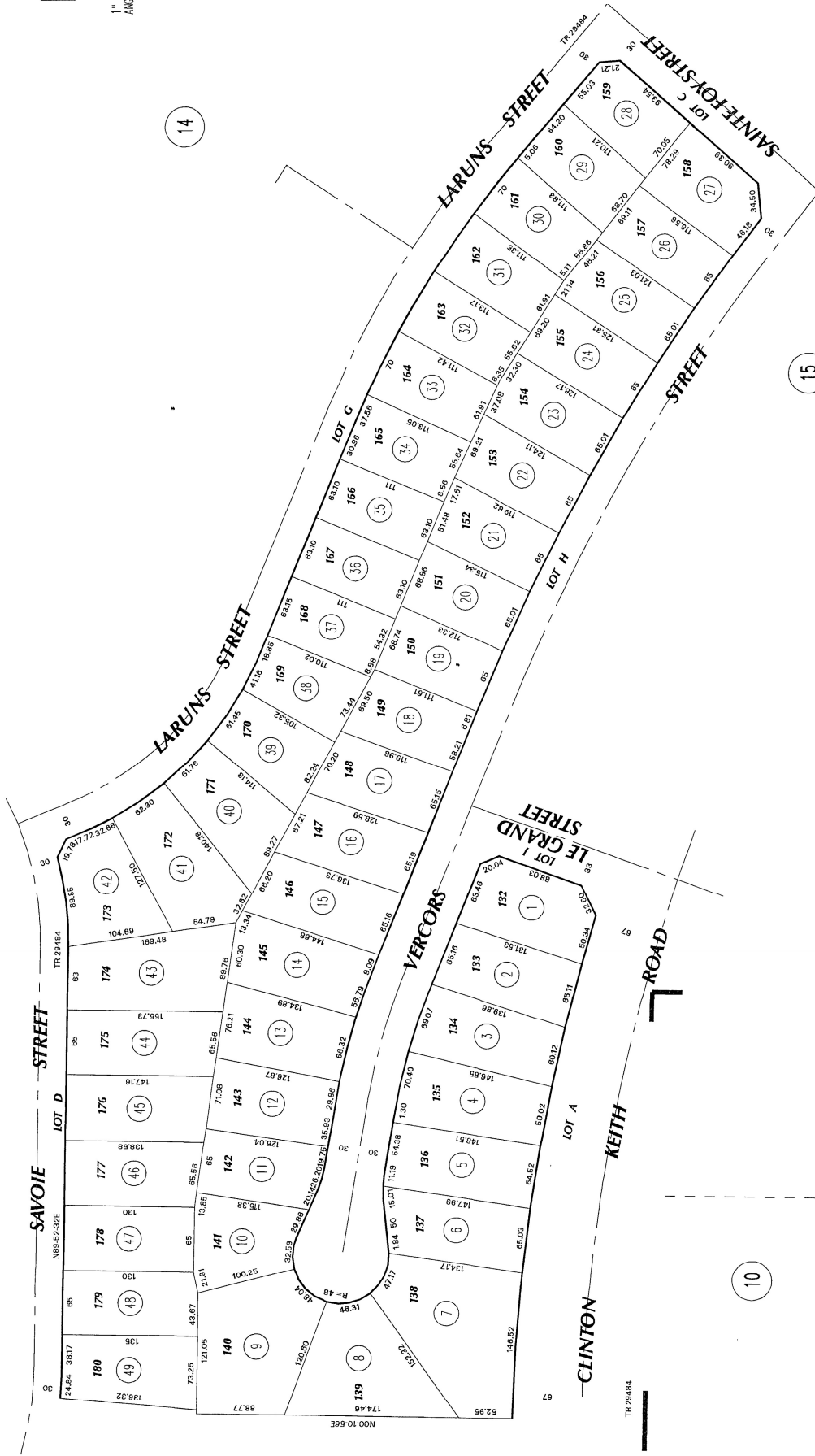
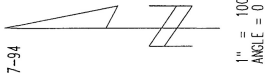
THIS MAP WAS PREPARED FOR ASSESSMENT PURPOSES ONLY. NO LIABILITY IS ASSUMED FOR THE ACCURACY OF THE DATA SHOWN. ASSESSOR'S PARCEL MAY NOT COMPLY WITH LOCAL LOT-SPLIT OR BUILDING SITE ORDINANCES.

JAN 25 2007

POR. SW 31 T. 6S., R. 2W

TRA 087-174

480-13
487-94



ASSESSOR'S MAP BK480 PG.13
Riverside County, Calif.

MB 387/81-99 TRACT MAP NO. 29484

Sep 2006

THIS MAP WAS PREPARED FOR ASSESSMENT PURPOSES ONLY. NO LIABILITY IS ASSUMED FOR THE ACCURACY OF THE DATA SHOWN. ASSESSOR'S PARCEL MAY NOT COMPLY WITH LOCAL LOT-SPLIT OR BUILDING SITE ORDINANCES.

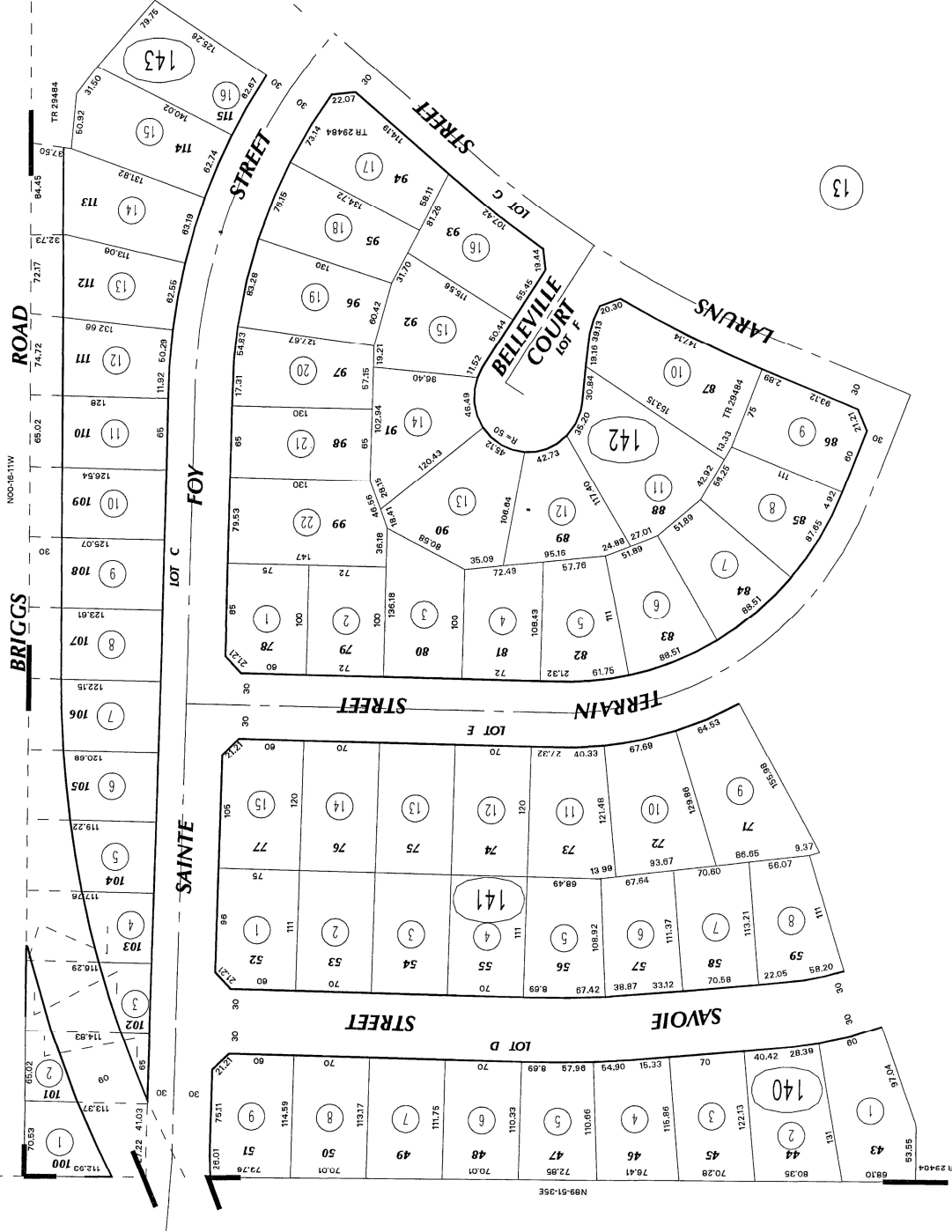
JAN 25 2007

POR. SW 31 T. 6S., R. 2W

10

480-14
467-92

TRA 082-174



ASSESSOR'S MAP BK480 PG. 14
Riverside County, Calif.

MB 387/81-99 TRACT MAP NO. 29484

Oct 2006

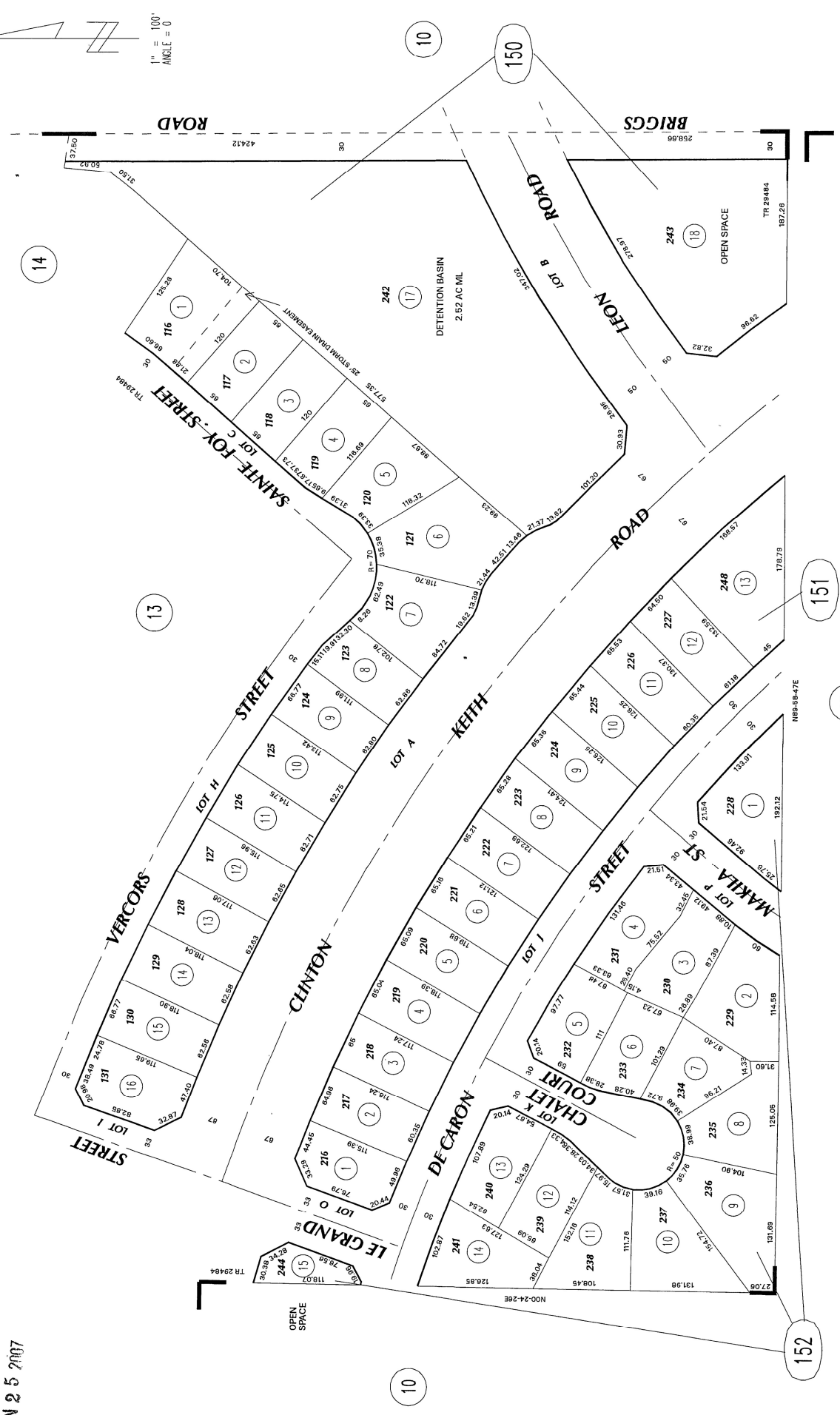
THIS MAP WAS PREPARED FOR ASSESSMENT PURPOSES ONLY. NO LIABILITY IS ASSUMED FOR THE ACCURACY OF THE DATA SHOWN. ASSESSOR'S PARCEL MAY NOT COMPLY WITH LOCAL LOT-SPLIT OR BUILDING SITE ORDINANCES.

JAN 25 2007

POR. SW 31 T. 6S., R. 2W

TRA 082-174

480-15
467-93



ASSESSOR'S MAP BK480 PG.15
Riverside County, Calif.

MB 387/81-99 TRACT MAP NO. 29484

Sep 2006

Exhibit D

2013 Special Tax Refunding Bonds Debt Service Schedule

Murrieta Valley Unified School District
Improvement Area B of Community Facilities District No. 2002-4
2013 Special Tax Refunding Bonds
Debt Service Schedule

Period	2013 Special Tax Refunding Bonds		
	Principal	Interest	Total Debt Service
9/1/2013	\$145,000.00	\$132,749.31	\$277,749.31
9/1/2014	155,000.00	248,625.00	403,625.00
9/1/2015	160,000.00	245,525.00	405,525.00
9/1/2016	165,000.00	242,325.00	407,325.00
9/1/2017	165,000.00	239,025.00	404,025.00
9/1/2018	170,000.00	235,312.50	405,312.50
9/1/2019	175,000.00	231,062.50	406,062.50
9/1/2020	180,000.00	226,250.00	406,250.00
9/1/2021	185,000.00	220,625.00	405,625.00
9/1/2022	190,000.00	214,381.26	404,381.26
9/1/2023	195,000.00	207,731.26	402,731.26
9/1/2024	205,000.00	200,418.76	405,418.76
9/1/2025	215,000.00	192,731.26	407,731.26
9/1/2026	220,000.00	184,400.00	404,400.00
9/1/2027	230,000.00	175,600.00	405,600.00
9/1/2028	240,000.00	166,400.00	406,400.00
9/1/2029	250,000.00	156,500.00	406,500.00
9/1/2030	260,000.00	144,000.00	404,000.00
9/1/2031	275,000.00	131,000.00	406,000.00
9/1/2032	290,000.00	117,250.00	407,250.00
9/1/2033	300,000.00	102,750.00	402,750.00
9/1/2034	315,000.00	87,750.00	402,750.00
9/1/2035	335,000.00	72,000.00	407,000.00
9/1/2036	350,000.00	55,250.00	405,250.00
9/1/2037	370,000.00	37,750.00	407,750.00
9/1/2038	385,000.00	19,250.00	404,250.00
Total	\$6,125,000.00	\$4,286,661.85	\$10,411,661.85

Exhibit E

Delinquent Annual Special Tax Report



Fixed Charge Special Assessment Delinquency Report

Year End for Fiscal Year 2021/2022



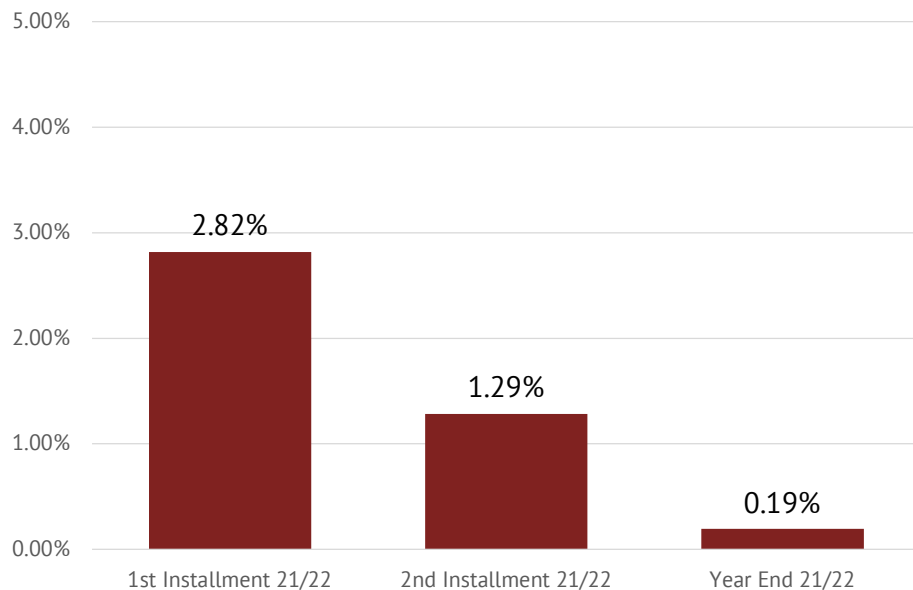
Murrieta Valley Unified School District Community Facilities District No. 2002-4 Improvement Area B

Summary

Year End

Total Taxes Due June 30, 2022	\$483,707.42
Amount Paid	\$482,766.08
Amount Remaining to be Collected	\$941.34
Number of Parcels Delinquent	1
Delinquency Rate	0.19%

Year End Delinquency Rate Comparison



Foreclosure

CFD Subject to Foreclosure Covenant:	Yes
Foreclosure Determination Date 1st Installment:	February 15th
Foreclosure Notification Date 1st Installment:	April 1st
Foreclosure Determination Date 2nd Installment:	June 15th
Foreclosure Notification Date 2nd Installment:	July 30th
Foreclosure Commencement Date:	September 13th

Foreclosure Qualification

Individual Owner Multiple Parcels Delinquency	N/A
Individual Owner Delinquency Threshold	\$5,000
Aggregate Delinquency Rate	5.00%

Parcels Qualifying for Foreclosure

Parcels Exceeding Individual Foreclosure Threshold	0
Parcels Exceeding CFD Aggregate	0

Pursuant to the Fiscal Agent Agreement, the District may elect to forego foreclosure proceedings as long as the Reserve Fund is fully funded and the Debt Service can be paid.



Fixed Charge Special Assessment Delinquency Report

Year End for Fiscal Year 2021/2022



Murrieta Valley Unified School District Community Facilities District No. 2002-4 Improvement Area B

Historical Delinquency Summary

Fiscal Year	Subject Fiscal Year					June 30, 2022	
	Aggregate Special Tax	Parcels Delinquent	Amount Collected	Amount Delinquent	Delinquency Rate	Remaining Amount Delinquent	Remaining Delinquency Rate
2017/2018	\$483,707.42	1	\$483,707.42	\$1,053.34	0.22%	\$0.00	0.00%
2018/2019	483,707.42	1	482,654.08	1,053.34	0.22%	0.00	0.00%
2019/2020	483,707.42	0	482,654.08	0.00	0.00%	0.00	0.00%
2020/2021	483,707.42	1	483,707.42	1,055.34	0.22%	0.00	0.00%
2021/2022	483,707.42	1	482,766.08	941.34	0.19%	941.34	0.19%

Historical Delinquency Rate

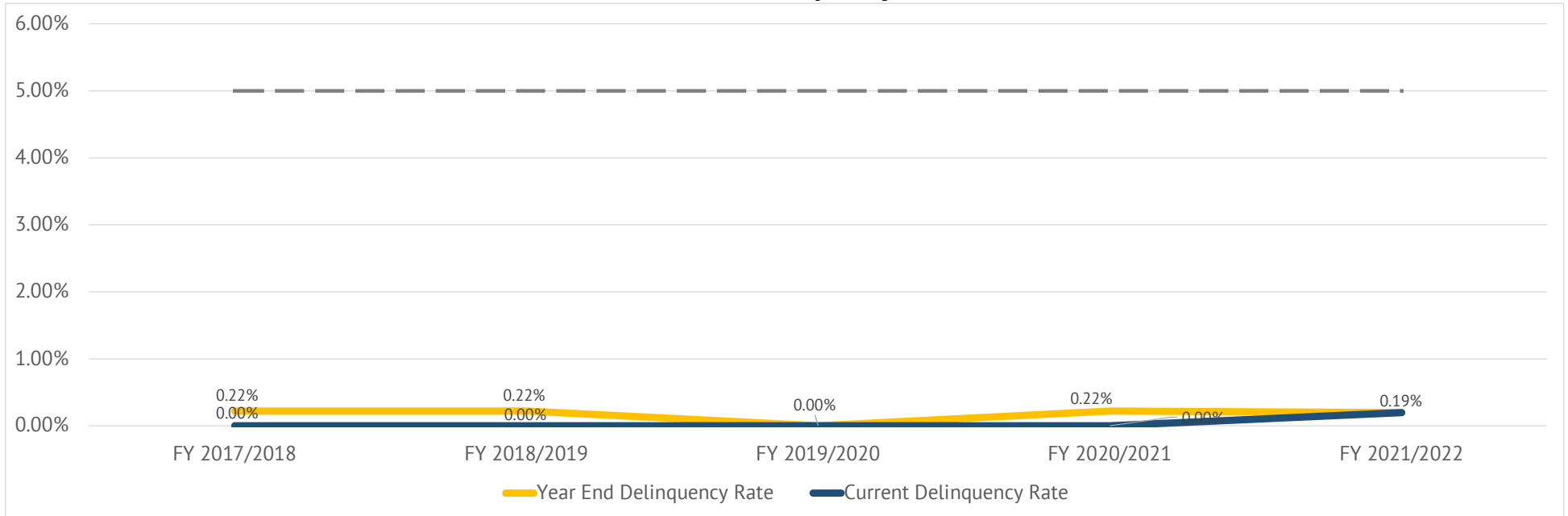


Exhibit F

Summary of Transactions for Fiscal Agent Accounts

Fund: IA B of CFD No. 2002-4 2013 Special Tax Refunding Bonds
Subfund: 5909239A - Special Tax Fund

Date	Interest	Deposits	Transfers In	Transfers Out	Expenditures	Balance	Payee	Reference	Description
07-01-2021	\$2,687.95	\$1,388,978.60	\$0.00	(\$974,878.64)	\$0.00	\$416,787.91			BEGINNING BALANCE
07-01-2021	\$3.31					\$416,791.22		Interest	Interest Earnings
08-02-2021	\$3.62					\$416,794.84		Interest	Interest Earnings
08-05-2021		\$1,098.17				\$417,893.01		Deposit	Special Tax Deposit
09-01-2021	\$3.63					\$417,896.64		Interest	Interest Earnings
09-01-2021				(\$295,295.36)		\$122,601.28		Transfer Out	Transfer to Bond Fund (5909239B)
10-01-2021	\$1.03					\$122,602.31		Interest	Interest Earnings
10-14-2021			\$3,675.08			\$126,277.39		Transfer In	Transfer from Surplus Revenue Fund 5909236S
10-14-2021				(\$77,940.93)		\$48,336.46		Transfer Out	Transfer To Project Fund Custody 5909232E
11-01-2021	\$0.69					\$48,337.15		Interest	Interest Earnings
12-01-2021	\$0.41					\$48,337.56		Interest	Interest Earnings
01-03-2022	\$0.42					\$48,337.98		Interest	Interest Earnings
02-01-2022	\$0.42					\$48,338.40		Interest	Interest Earnings
02-04-2022		\$241,023.40				\$289,361.80		Deposit	Special Tax Deposit
02-25-2022		\$2,502.94				\$291,864.74		Deposit	Special Tax Deposit
03-01-2022	\$2.07					\$291,866.81		Interest	Interest Earnings
03-01-2022				(\$107,190.63)		\$184,676.18		Transfer Out	Transfer To #5909239B Bond Fund
04-01-2022	\$1.60					\$184,677.78		Interest	Interest Earnings
05-02-2022	\$1.55					\$184,679.33		Interest	Interest Earnings
06-01-2022	\$31.98					\$184,711.31		Interest	Interest Earnings
06-02-2022		\$236,580.08				\$421,291.39		Deposit	Special Tax Deposit
	\$50.73	\$481,204.59	\$3,675.08	(\$480,426.92)	\$0.00	\$4,503.48			DATE RANGE BALANCE
Subfund Total	\$2,738.68	\$1,870,183.19	\$3,675.08	(\$1,455,305.56)	\$0.00	\$421,291.39	Total for 5909239A - Special Tax Fund		

Subfund: 5909239B - Bond Fund

Date	Interest	Deposits	Transfers In	Transfers Out	Expenditures	Balance	Payee	Reference	Description
07-01-2021	\$0.00	\$0.00	\$807,093.76	(\$807,093.76)	\$0.00	\$0.00			BEGINNING BALANCE
09-01-2021					(\$185,000.00)	(\$185,000.00)	Cede & Co	Debt Service Payment	Debt Service Principal
09-01-2021					(\$110,312.50)	(\$295,312.50)	Cede & Co	Debt Service Payment	Debt Service Interest
09-01-2021			\$295,295.36			(\$17.14)		Transfer In	Transfer from Special Tax Fund (5909239A)
09-01-2021			\$17.14			\$0.00		Transfer In	Transfer from Reserve Fund (5909236K)
03-01-2022				(\$107,190.63)	(\$107,190.63)	(\$107,190.63)	Cede & Co	Debt Service Payment	Debt Service Interest
03-01-2022			\$107,190.63			\$0.00		Transfer In	Transfer From #5909239A Spec Tax
	\$0.00	\$0.00	\$402,503.13	\$0.00	(\$402,503.13)	\$0.00			DATE RANGE BALANCE
Subfund Total	\$0.00	\$0.00	\$1,209,596.89	(\$807,093.76)	(\$402,503.13)	\$0.00	Total for 5909239B - Bond Fund		

Subfund: 5909239E - Improvement Fund

Date	Interest	Deposits	Transfers In	Transfers Out	Expenditures	Balance	Payee	Reference	Description
07-01-2021	\$181.40	\$15,456.95	\$0.00	\$0.00	(\$15,632.33)	\$6.02			BEGINNING BALANCE
	\$0.00	\$0.00	\$0.00	\$0.00	\$0.00	\$0.00			DATE RANGE BALANCE
Subfund Total	\$181.40	\$15,456.95	\$0.00	\$0.00	(\$15,632.33)	\$6.02	Total for 5909239E - Improvement Fund		

Subfund: 5909239I - Administrative Expense Fund

Date	Interest	Deposits	Transfers In	Transfers Out	Expenditures	Balance	Payee	Reference	Description
07-01-2021	\$448.64	\$43,857.33	\$9,000.00	\$0.00	(\$23,983.35)	\$29,322.62			BEGINNING BALANCE
07-01-2021	\$0.24					\$29,322.86		Interest	Interest Earnings
08-02-2021	\$0.25					\$29,323.11		Interest	Interest Earnings

Subfund: 5909239I - Administrative Expense Fund									
Date	Interest	Deposits	Transfers In	Transfers Out	Expenditures	Balance	Payee	Reference	Description
08-30-2021					(\$11,776.86)	\$17,546.25	Murrieta Valley Unified School District	Professional/Consulting Services & Operating Expenses	Req #17 dtd 08/24/2021 Cooperative Strategies; Colbi Tech Inc.&KeyAnalytics
09-01-2021	\$0.25					\$17,546.50		Interest	Interest Earnings
10-01-2021	\$0.15					\$17,546.65		Interest	Interest Earnings
11-01-2021	\$0.15					\$17,546.80		Interest	Interest Earnings
12-01-2021	\$0.15					\$17,546.95		Interest	Interest Earnings
01-03-2022	\$0.15					\$17,547.10		Interest	Interest Earnings
02-01-2022	\$0.15					\$17,547.25		Interest	Interest Earnings
03-01-2022	\$0.14					\$17,547.39		Interest	Interest Earnings
04-01-2022	\$0.15					\$17,547.54		Interest	Interest Earnings
05-02-2022	\$0.15					\$17,547.69		Interest	Interest Earnings
06-01-2022	\$3.04					\$17,550.73		Interest	Interest Earnings
	\$4.97	\$0.00	\$0.00	\$0.00	(\$11,776.86)	(\$11,771.89)			DATE RANGE BALANCE
Subfund Total	\$453.61	\$43,857.33	\$9,000.00	\$0.00	(\$35,760.21)	\$17,550.73	Total for 5909239I - Administrative Expense Fund		
Fund Total	\$3,373.69	\$1,929,497.47	\$1,222,271.97	(\$2,262,399.32)	(\$453,895.67)	\$438,848.14	Total for IA B of CFD No. 2002-4 2013 Special Tax Refunding Bonds		
Grand Total	\$3,373.69	\$1,929,497.47	\$1,222,271.97	(\$2,262,399.32)	(\$453,895.67)	\$438,848.14	Grand Total for Selected Funds/SubFunds		

Exhibit G

Annual Special Tax Roll for Fiscal Year 2022/2023

Murrieta Valley Unified School District
 Improvment Area B of Community Facilities District No. 2002-4
 Fiscal Year 2022/2023 Special Tax Roll

Tract	Lot	Assessor's Parcel Number	Assigned Special Tax
29484	24	480-100-001	\$0.00
29484	246	480-110-036	\$0.00
29484	247	480-110-037	\$0.00
29484	242	480-150-017	\$0.00
29484	243	480-150-018	\$0.00
29484	248	480-151-013	\$0.00
29484	244	480-152-015	\$0.00
29484	68	480-121-009	\$1,768.66
29484	150	480-130-019	\$1,768.66
29484	152	480-130-021	\$1,768.66
29484	153	480-130-022	\$1,768.66
29484	49	480-140-007	\$1,768.66
29484	54	480-141-003	\$1,768.66
29484	72	480-141-010	\$1,768.66
29484	76	480-141-014	\$1,768.66
29484	78	480-142-001	\$1,768.66
29484	85	480-142-008	\$1,768.66
29484	89	480-142-012	\$1,768.66
29484	91	480-142-014	\$1,768.66
29484	96	480-142-019	\$1,768.66
29484	101	480-143-002	\$1,768.66
29484	104	480-143-005	\$1,768.66
29484	106	480-143-007	\$1,768.66
29484	107	480-143-008	\$1,768.66
29484	109	480-143-010	\$1,768.66
29484	110	480-143-011	\$1,768.66
29484	222	480-151-007	\$1,768.66
29484	228	480-152-001	\$1,768.66
29484	230	480-152-003	\$1,768.66
29484	239	480-152-012	\$1,768.66
29484	66	480-121-007	\$1,882.68
29484	69	480-121-010	\$1,882.68
29484	149	480-130-018	\$1,882.68
29484	155	480-130-024	\$1,882.68
29484	156	480-130-025	\$1,882.68
29484	157	480-130-026	\$1,882.68
29484	158	480-130-027	\$1,882.68
29484	159	480-130-028	\$1,882.68
29484	160	480-130-029	\$1,882.68
29484	161	480-130-030	\$1,882.68
29484	163	480-130-032	\$1,882.68
29484	164	480-130-033	\$1,882.68

Murrieta Valley Unified School District
 Improvment Area B of Community Facilities District No. 2002-4
 Fiscal Year 2022/2023 Special Tax Roll

Tract	Lot	Assessor's Parcel Number	Assigned Special Tax
29484	165	480-130-034	\$1,882.68
29484	167	480-130-036	\$1,882.68
29484	168	480-130-037	\$1,882.68
29484	169	480-130-038	\$1,882.68
29484	50	480-140-008	\$1,882.68
29484	53	480-141-002	\$1,882.68
29484	71	480-141-009	\$1,882.68
29484	73	480-141-011	\$1,882.68
29484	75	480-141-013	\$1,882.68
29484	77	480-141-015	\$1,882.68
29484	79	480-142-002	\$1,882.68
29484	80	480-142-003	\$1,882.68
29484	81	480-142-004	\$1,882.68
29484	82	480-142-005	\$1,882.68
29484	84	480-142-007	\$1,882.68
29484	86	480-142-009	\$1,882.68
29484	87	480-142-010	\$1,882.68
29484	90	480-142-013	\$1,882.68
29484	93	480-142-016	\$1,882.68
29484	95	480-142-018	\$1,882.68
29484	97	480-142-020	\$1,882.68
29484	99	480-142-022	\$1,882.68
29484	100	480-143-001	\$1,882.68
29484	102	480-143-003	\$1,882.68
29484	112	480-143-013	\$1,882.68
29484	113	480-143-014	\$1,882.68
29484	114	480-143-015	\$1,882.68
29484	116	480-150-001	\$1,882.68
29484	117	480-150-002	\$1,882.68
29484	118	480-150-003	\$1,882.68
29484	120	480-150-005	\$1,882.68
29484	121	480-150-006	\$1,882.68
29484	122	480-150-007	\$1,882.68
29484	124	480-150-009	\$1,882.68
29484	125	480-150-010	\$1,882.68
29484	127	480-150-012	\$1,882.68
29484	128	480-150-013	\$1,882.68
29484	129	480-150-014	\$1,882.68
29484	131	480-150-016	\$1,882.68
29484	217	480-151-002	\$1,882.68
29484	218	480-151-003	\$1,882.68
29484	219	480-151-004	\$1,882.68

Murrieta Valley Unified School District
 Improvment Area B of Community Facilities District No. 2002-4
 Fiscal Year 2022/2023 Special Tax Roll

Tract	Lot	Assessor's Parcel Number	Assigned Special Tax
29484	221	480-151-006	\$1,882.68
29484	223	480-151-008	\$1,882.68
29484	225	480-151-010	\$1,882.68
29484	226	480-151-011	\$1,882.68
29484	227	480-151-012	\$1,882.68
29484	229	480-152-002	\$1,882.68
29484	231	480-152-004	\$1,882.68
29484	233	480-152-006	\$1,882.68
29484	234	480-152-007	\$1,882.68
29484	235	480-152-008	\$1,882.68
29484	237	480-152-010	\$1,882.68
29484	240	480-152-013	\$1,882.68
29484	241	480-152-014	\$1,882.68
29484	67	480-121-008	\$1,996.68
29484	70	480-121-011	\$1,996.68
29484	151	480-130-020	\$1,996.68
29484	154	480-130-023	\$1,996.68
29484	51	480-140-009	\$1,996.68
29484	52	480-141-001	\$1,996.68
29484	74	480-141-012	\$1,996.68
29484	83	480-142-006	\$1,996.68
29484	98	480-142-021	\$1,996.68
29484	103	480-143-004	\$1,996.68
29484	105	480-143-006	\$1,996.68
29484	108	480-143-009	\$1,996.68
29484	111	480-143-012	\$1,996.68
29484	130	480-150-015	\$1,996.68
29484	216	480-151-001	\$1,996.68
29484	232	480-152-005	\$1,996.68
29484	181	480-110-001	\$2,110.68
29484	182	480-110-002	\$2,110.68
29484	183	480-110-003	\$2,110.68
29484	184	480-110-004	\$2,110.68
29484	185	480-110-005	\$2,110.68
29484	186	480-110-006	\$2,110.68
29484	187	480-110-007	\$2,110.68
29484	188	480-110-008	\$2,110.68
29484	189	480-110-009	\$2,110.68
29484	190	480-110-010	\$2,110.68
29484	191	480-110-011	\$2,110.68
29484	192	480-110-012	\$2,110.68
29484	193	480-110-013	\$2,110.68

Murrieta Valley Unified School District
 Improvment Area B of Community Facilities District No. 2002-4
 Fiscal Year 2022/2023 Special Tax Roll

Tract	Lot	Assessor's Parcel Number	Assigned Special Tax
29484	194	480-110-014	\$2,110.68
29484	195	480-110-015	\$2,110.68
29484	196	480-110-016	\$2,110.68
29484	197	480-110-017	\$2,110.68
29484	198	480-110-018	\$2,110.68
29484	199	480-110-019	\$2,110.68
29484	200	480-110-020	\$2,110.68
29484	201	480-110-021	\$2,110.68
29484	202	480-110-022	\$2,110.68
29484	203	480-110-023	\$2,110.68
29484	204	480-110-024	\$2,110.68
29484	205	480-110-025	\$2,110.68
29484	206	480-110-026	\$2,110.68
29484	207	480-110-027	\$2,110.68
29484	208	480-110-028	\$2,110.68
29484	209	480-110-029	\$2,110.68
29484	210	480-110-030	\$2,110.68
29484	211	480-110-031	\$2,110.68
29484	212	480-110-032	\$2,110.68
29484	213	480-110-033	\$2,110.68
29484	214	480-110-034	\$2,110.68
29484	215	480-110-035	\$2,110.68
29484	1	480-120-001	\$2,110.68
29484	2	480-120-002	\$2,110.68
29484	3	480-120-003	\$2,110.68
29484	4	480-120-004	\$2,110.68
29484	5	480-120-005	\$2,110.68
29484	6	480-120-006	\$2,110.68
29484	7	480-120-007	\$2,110.68
29484	8	480-120-008	\$2,110.68
29484	9	480-120-009	\$2,110.68
29484	10	480-120-010	\$2,110.68
29484	11	480-120-011	\$2,110.68
29484	12	480-120-012	\$2,110.68
29484	13	480-120-013	\$2,110.68
29484	14	480-120-014	\$2,110.68
29484	15	480-120-015	\$2,110.68
29484	16	480-120-016	\$2,110.68
29484	17	480-120-017	\$2,110.68
29484	18	480-120-018	\$2,110.68
29484	19	480-120-019	\$2,110.68
29484	20	480-120-020	\$2,110.68

Murrieta Valley Unified School District
 Improvment Area B of Community Facilities District No. 2002-4
 Fiscal Year 2022/2023 Special Tax Roll

Tract	Lot	Assessor's Parcel Number	Assigned Special Tax
29484	21	480-120-021	\$2,110.68
29484	22	480-120-022	\$2,110.68
29484	23	480-120-023	\$2,110.68
29484	24	480-120-024	\$2,110.68
29484	25	480-120-025	\$2,110.68
29484	26	480-120-026	\$2,110.68
29484	27	480-120-027	\$2,110.68
29484	28	480-120-028	\$2,110.68
29484	29	480-120-029	\$2,110.68
29484	30	480-120-030	\$2,110.68
29484	31	480-120-031	\$2,110.68
29484	32	480-120-032	\$2,110.68
29484	33	480-120-033	\$2,110.68
29484	34	480-120-034	\$2,110.68
29484	35	480-120-035	\$2,110.68
29484	36	480-120-036	\$2,110.68
29484	37	480-120-037	\$2,110.68
29484	38	480-120-038	\$2,110.68
29484	39	480-120-039	\$2,110.68
29484	40	480-120-040	\$2,110.68
29484	41	480-120-041	\$2,110.68
29484	42	480-120-042	\$2,110.68
29484	60	480-121-001	\$2,110.68
29484	61	480-121-002	\$2,110.68
29484	62	480-121-003	\$2,110.68
29484	63	480-121-004	\$2,110.68
29484	64	480-121-005	\$2,110.68
29484	65	480-121-006	\$2,110.68
29484	132	480-130-001	\$2,110.68
29484	133	480-130-002	\$2,110.68
29484	134	480-130-003	\$2,110.68
29484	135	480-130-004	\$2,110.68
29484	136	480-130-005	\$2,110.68
29484	137	480-130-006	\$2,110.68
29484	138	480-130-007	\$2,110.68
29484	139	480-130-008	\$2,110.68
29484	140	480-130-009	\$2,110.68
29484	141	480-130-010	\$2,110.68
29484	142	480-130-011	\$2,110.68
29484	143	480-130-012	\$2,110.68
29484	144	480-130-013	\$2,110.68
29484	145	480-130-014	\$2,110.68

Murrieta Valley Unified School District
 Improvment Area B of Community Facilities District No. 2002-4
 Fiscal Year 2022/2023 Special Tax Roll

Tract	Lot	Assessor's Parcel Number	Assigned Special Tax
29484	146	480-130-015	\$2,110.68
29484	147	480-130-016	\$2,110.68
29484	148	480-130-017	\$2,110.68
29484	162	480-130-031	\$2,110.68
29484	166	480-130-035	\$2,110.68
29484	170	480-130-039	\$2,110.68
29484	171	480-130-040	\$2,110.68
29484	172	480-130-041	\$2,110.68
29484	173	480-130-042	\$2,110.68
29484	174	480-130-043	\$2,110.68
29484	175	480-130-044	\$2,110.68
29484	176	480-130-045	\$2,110.68
29484	177	480-130-046	\$2,110.68
29484	178	480-130-047	\$2,110.68
29484	179	480-130-048	\$2,110.68
29484	180	480-130-049	\$2,110.68
29484	43	480-140-001	\$2,110.68
29484	44	480-140-002	\$2,110.68
29484	45	480-140-003	\$2,110.68
29484	46	480-140-004	\$2,110.68
29484	47	480-140-005	\$2,110.68
29484	48	480-140-006	\$2,110.68
29484	55	480-141-004	\$2,110.68
29484	56	480-141-005	\$2,110.68
29484	57	480-141-006	\$2,110.68
29484	58	480-141-007	\$2,110.68
29484	59	480-141-008	\$2,110.68
29484	88	480-142-011	\$2,110.68
29484	92	480-142-015	\$2,110.68
29484	94	480-142-017	\$2,110.68
29484	115	480-143-016	\$2,110.68
29484	119	480-150-004	\$2,110.68
29484	123	480-150-008	\$2,110.68
29484	126	480-150-011	\$2,110.68
29484	220	480-151-005	\$2,110.68
29484	224	480-151-009	\$2,110.68
29484	236	480-152-009	\$2,110.68
29484	238	480-152-011	\$2,110.68

Total Parcels	248
Total Taxable Parcels	241
Total Assigned Special Tax	\$483,707.42