

# **ADDENDUM #3**

To BID #25029

## **Blacktop Surfacing Repairs Project**

May 16, 2025

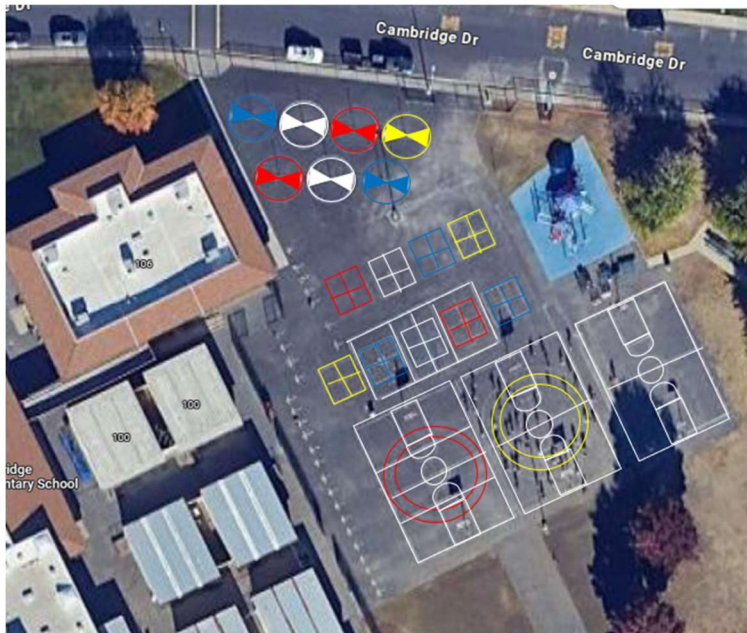
TO: ALL PROSEPECTIVE BIDDERS

FROM: Travis Unified School District

### **RE: Addendum #3**

*This Addendum forms a part of the Contract Documents and modifies the original Bidding Documents as noted below. This is only for the playgrounds and does not pertain to the parking lot re-striping.*

### **Cambridge Elementary:**

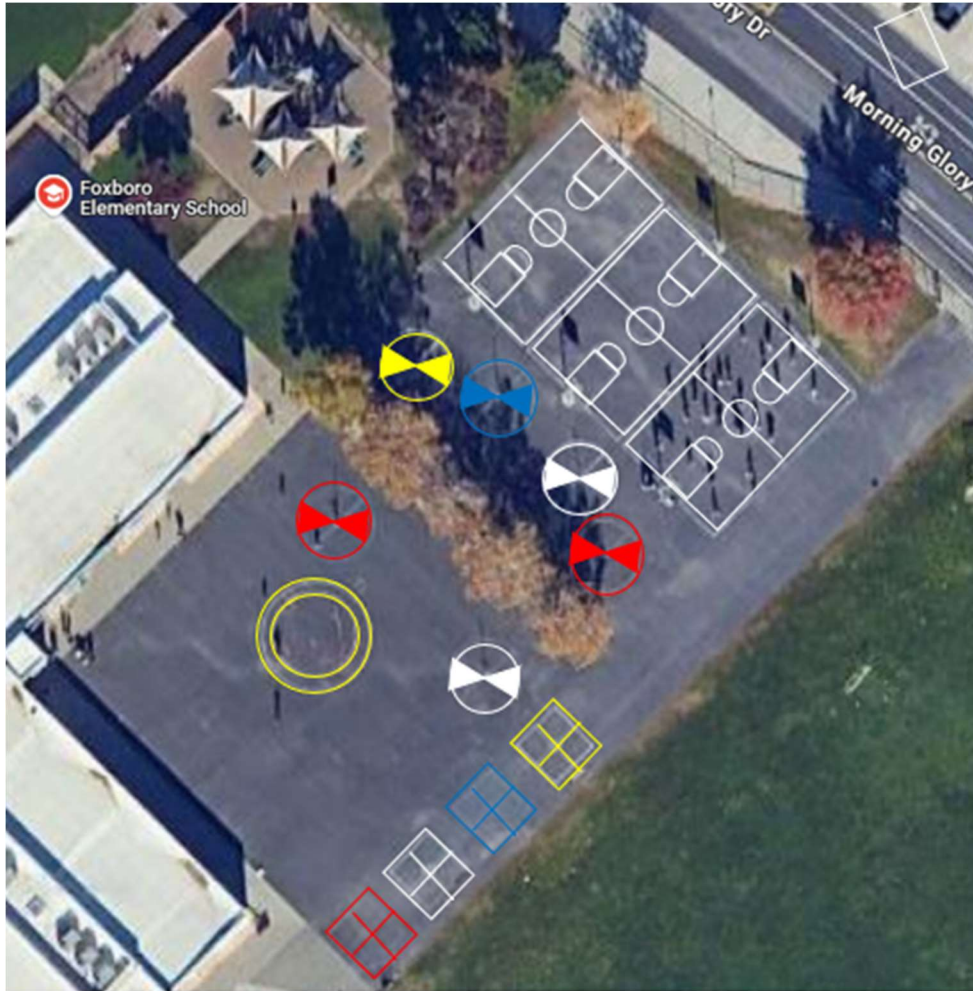


Paint consists of:

1. 7 tether ball circles approximately 20' diameter
2. 9 four-squares 16' x 16' (each internal square is 8'x8')
3. 2 large double circles. Inner circle is 38' diameter – Outer diameter is 46'.
4. 3 basketball courts. One of the courts has two extra lines that cross the court at the free throw lines. The dimensions vary a little per court, but they are approximately 65' x 50'. The court layouts are standard markups that are proportionate to the court size. Plus we want to add the three point lines (not shown in image)

- 1 small court that is around three of the four-squares, 30' x 60', with a center divide and two others lines 10' from the center.

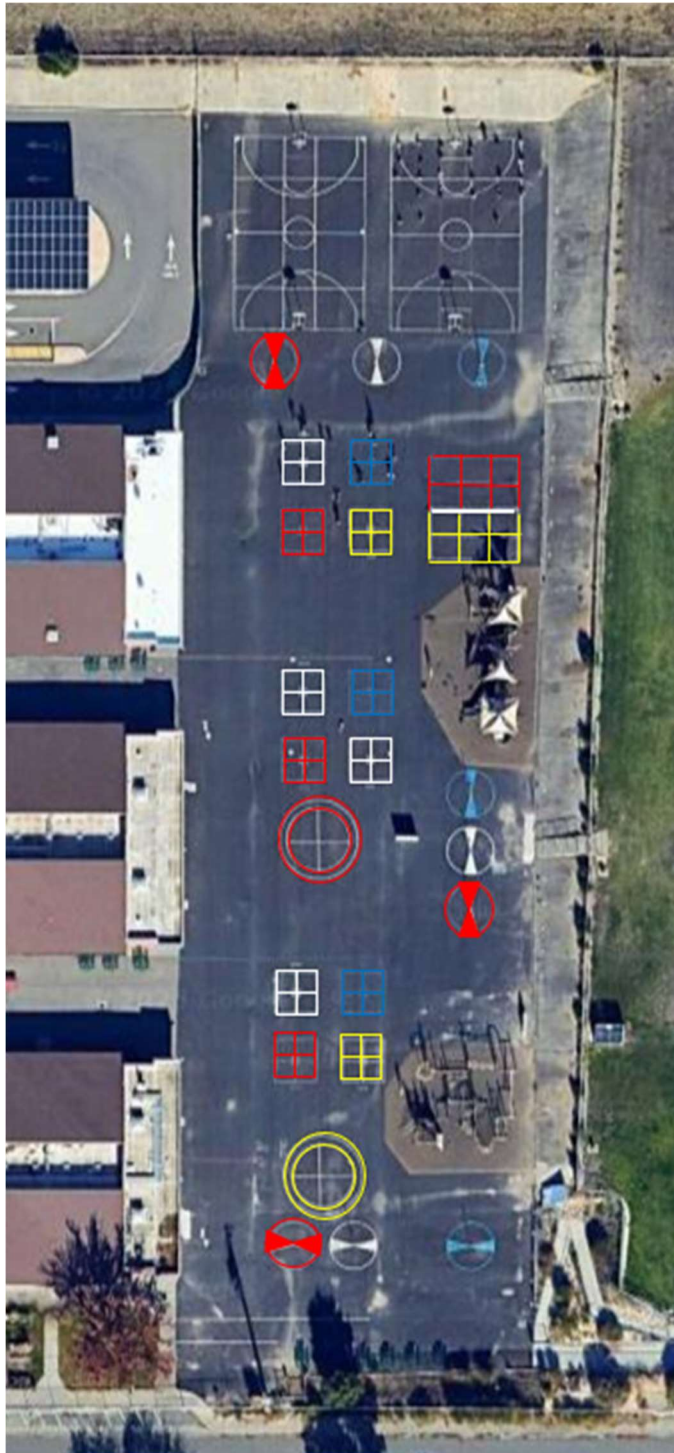
**Foxboro Elementary:**



**Paint consists of:**

1. 6 tether ball circles approximately 20' diameter
2. 4 four-squares 16' x 16' (each internal square is 8'x8')
3. 1 large double circle - Inner circle is 38' diameter – Outer diameter is 46'.
4. 3 basketball courts. The dimensions vary a little per court, but they are approximately 65' x 50'. The court layouts are standard markups that are proportionate to the court size. Plus we want to add the three-point lines (not shown in image)
5. All lines shall be 3 to 4 inches in width. Colors are as indicated in image.

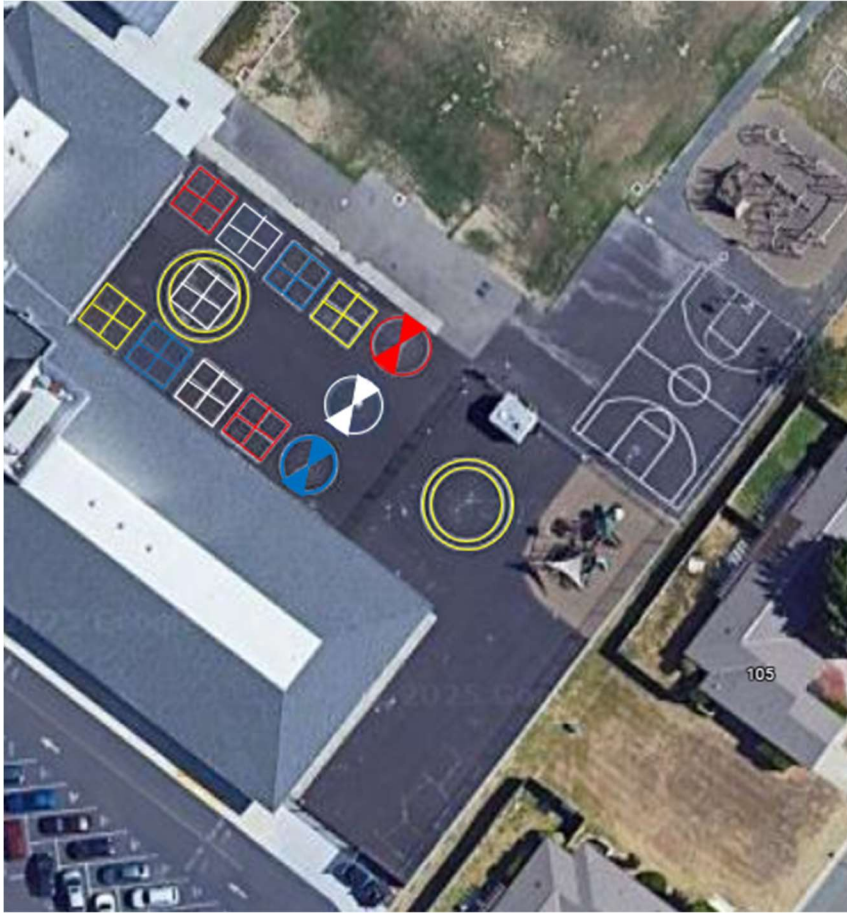
## Center Elementary:



### Paint consists of:

1. 9 tether ball circles approximately 20' diameter
2. 12 four-squares 16' x 16'
3. 2 large double circles - Inner circle is 38' diameter - Outer diameter is 46'
4. 2 basketball courts with two extra lines that cross the court at the free throw lines. The dimensions vary a little per court, but they are approximately 65' x 50'. The court layouts are standard markups that are proportionate to the court size.
5. 1 small court, 40' x 34', divided into a red and a yellow court with 6 equal squares.
6. All lines shall be 3 to 4 inches in width. Colors are as indicated in image.

**Scandia Elementary:**



Paint consists of:

1. 3 tether ball circles approximately 20' diameter.
2. 9 four-squares 16' x 16'
3. 2 large double circles - Inner circle is 38' diameter – Outer diameter is 46'.
4. 1 basketball courts. The dimension approximately 70' x 44'. The court layouts are standard markups that are proportionate to the court size.
5. All lines shall be 3 to 4 inches in width. Colors are as indicated in image.

## Alternative Education:



Paint consists of:

1. 1 basketball court. The dimension approximately 85' x 50'. The court layouts are standard markups that are proportionate to the court size.