



# **Elementary Boundary Priorities and Considerations**

# Priorities & Goals

- Balance enrollment across buildings, classes and programs
- Establish contiguous boundaries, utilizing natural divisions between neighborhoods as attendance lines
- Prioritize reducing time spent on buses for students, promoting walking routes to school where feasible, to minimize transportation costs
- Take demographic considerations into account to ensure student academic, social, and mental health needs are met at each school, including considerations of educational programming

# Priorities & Goals

- Plan boundaries with longevity in mind, anticipating possible changes in the future to remain stable for as long as possible, minimizing the need for major construction projects and associated fiscal costs
- Facilitate a cohesive K-12 experience by ensuring as many schools as possible have students progress from one grade level to the next, maximizing student connectivity with their peers, while also considering staffing considerations such as staff movement or changes that may impact fiscal budgets
- Protect the integrity of the current boundaries and affect the fewest number of neighborhoods and children as possible

# New Developments

- Water's Edge (Route 14 & Three Oaks Corridor)
  - Current Boundaries: Canterbury and Hannah Beardsley
  - Status of Development: Anticipated to be completed in 2025
  - Estimated Student Impact: PreK - 6 students, Elem - 72 students
- Redwood Living (Central Park Drive)
  - Current Boundaries: Canterbury and Hannah Beardsley
  - Status of Development: 5 yr buildout 2024-29
  - Estimated Student Impact: PreK - 14 students, Elem - 26 students

# New Developments

- Derbyshire (Bard & Huntley Rd)
  - Current Boundaries: West and Bernotas
  - Status of Development: Anticipated 2025 & 26
  - Estimated Student Impact: Elem - 72 students
- Prairie Grove (80 acres on north end in discussion)
  - Current Boundaries: Coventry and Hannah Beardsley
  - Status of Development: Anticipate build-out 2025 through 2028
  - Estimated Student Impact: Elem - 85 students

# New Developments

- Pathway Court Apartments (Behind Jewel/Main St)
  - Current Boundaries: Husmann and Bernotas
  - Status of Development: Site Development Anticipated 2025
  - Estimated Student Impact: PreK - 7, Elem - 72

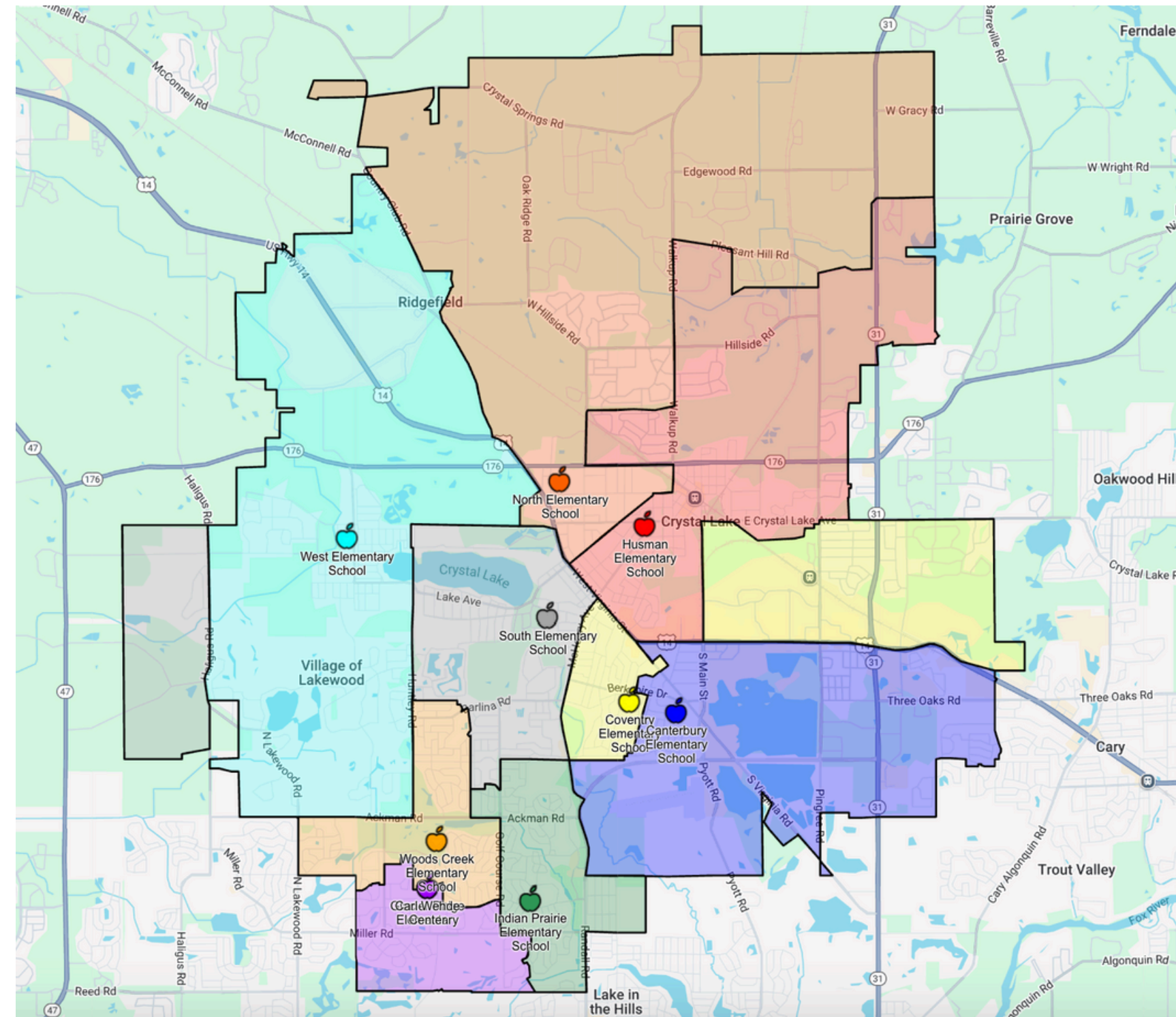
\*No projections for students were provided by the developer. As an estimate, the projection calculations provided for the Woodlore and Pathway Court developments were used to make the range of projections here.

# PreK-5 Historic Enrollment

Sch Year	Can (510)	Cov (696)	Glacier (611)	Hus (503)	In Pr (613)	No (742)	So (493)	We (618)	WC (590)	PreK
18/19	433	582	365	468	494	681	339	497	542	129
19/20	423	566	386	470	477	688	351	499	559	124
20/21	401	563	363	432	438	673	342	499	516	164
21/22	417	551	368	433	441	657	334	503	512	186
22/23	435	581	348	463	454	636	361	503	503	204
23/24	445	592	342	463	430	619	377	478	494	207
*24/25	445	571	320	476	443	596	354	467	460	215

These numbers represent the 6-day enrollment numbers from the district's actual attendance

# Current Boundaries



# PreK - 5 Future Enrollment

School Year	CAN (510)	COV (696)	GR (611)	HUS (503)	IND (613)	NO (742)	SO (493)	WE (618)	WC (590)
2025/26	401	513	340	484	506	521	399	518	473
2026/27	410	515	326	471	481	510	383	485	460
2027/28	396	509	334	454	461	517	362	458	458
2028/29	400	504	346	453	445	526	344	443	442
2029/30	403	507	344	433	434	547	330	429	454
2030/31	420	528	348	432	426	576	324	438	468

These numbers assume the 13-year average incoming kindy class starting in 25/26

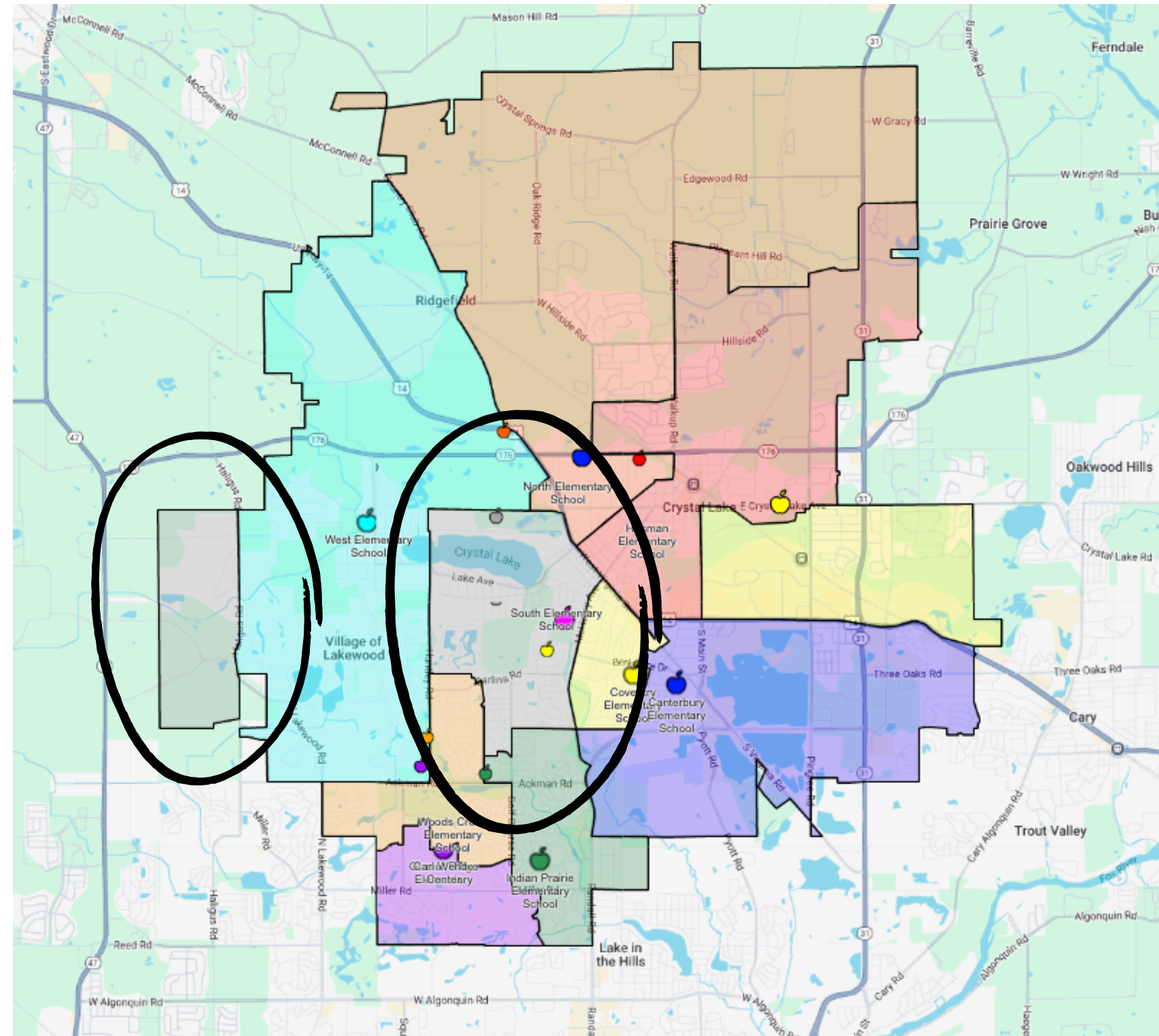
# CURRENT CONSIDERATIONS

---

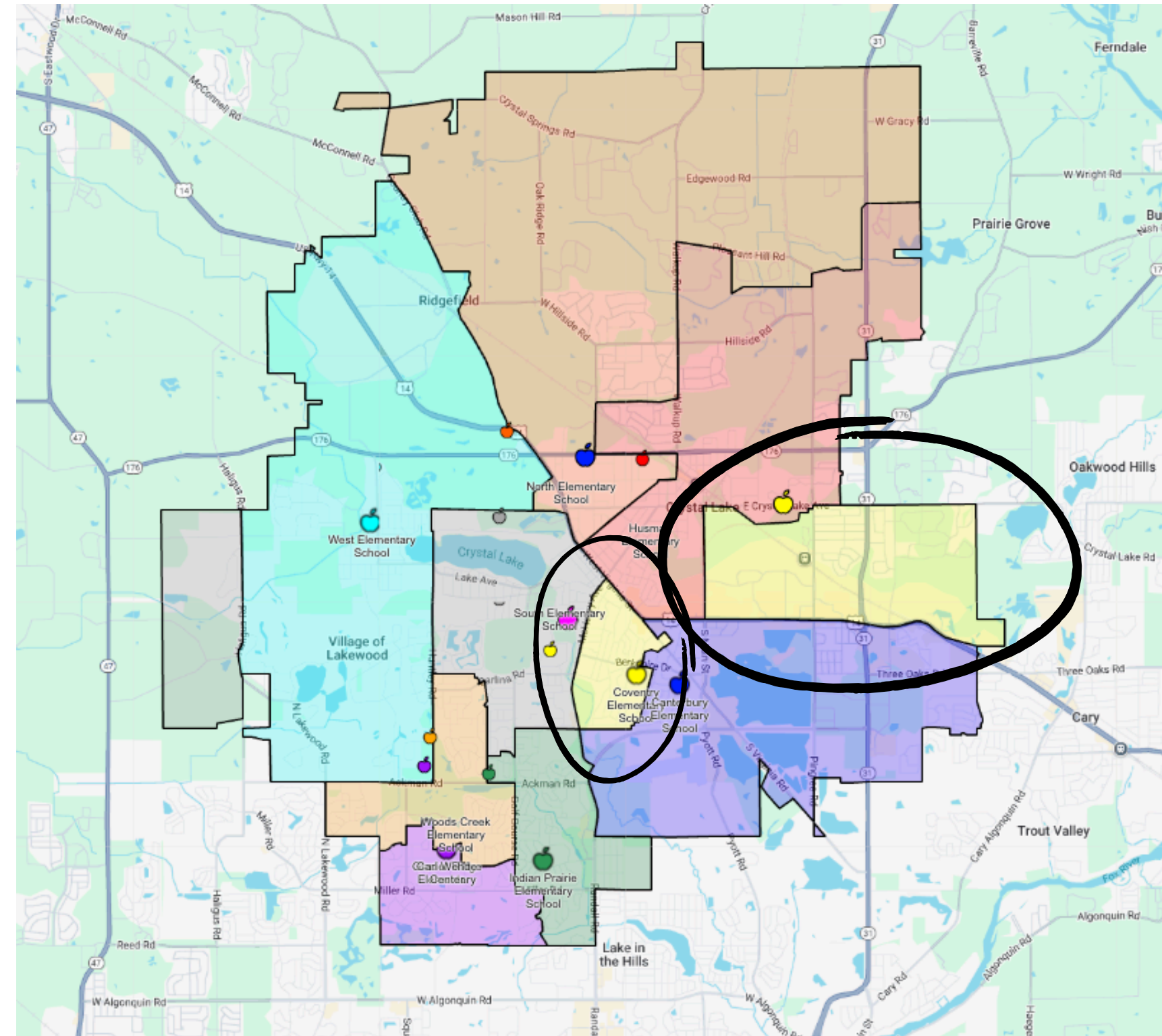
FOR THE BOUNDARY COMMITTEE

# Non-Contiguous Boundaries

# South Elementary Boundaries

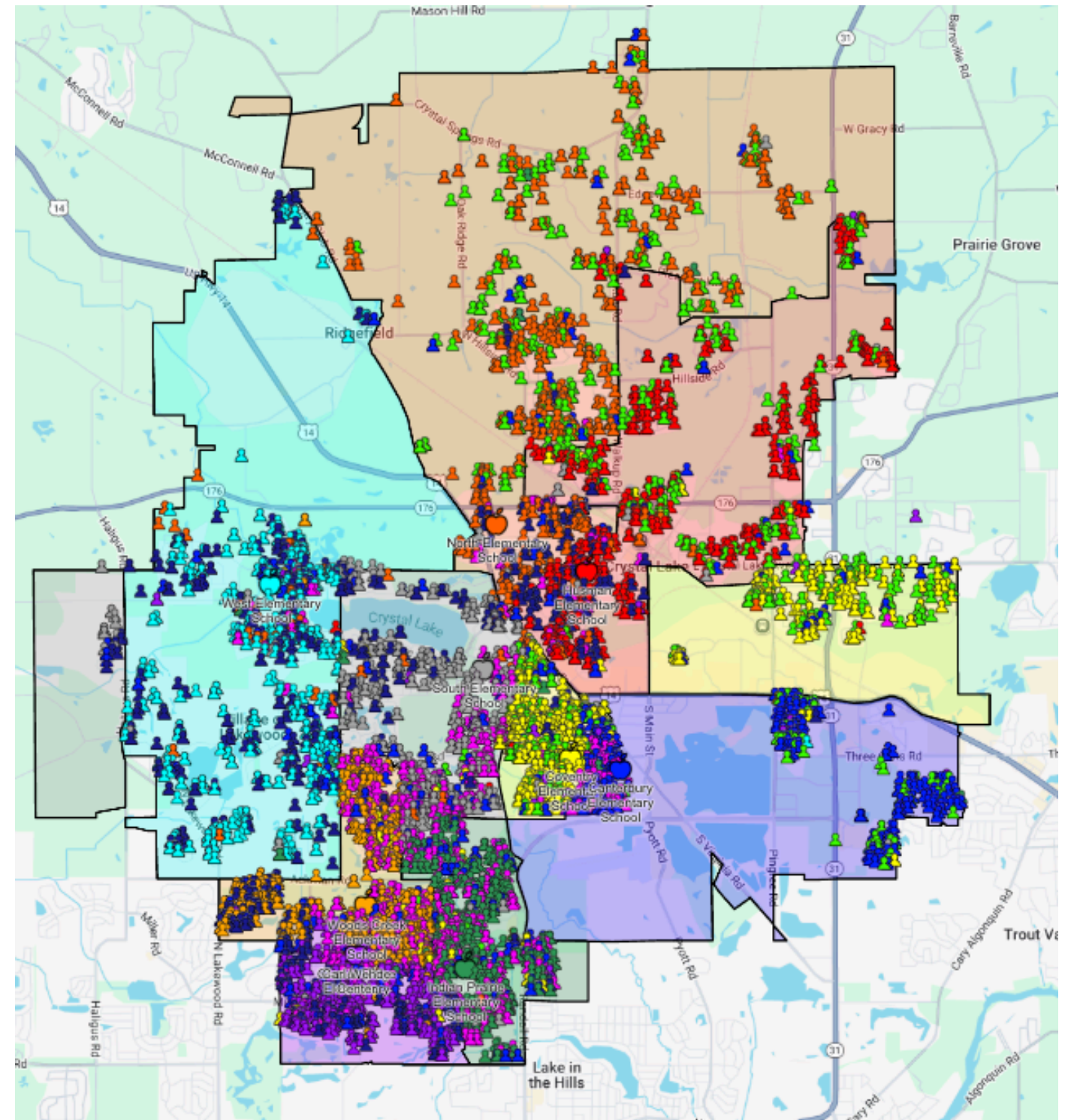
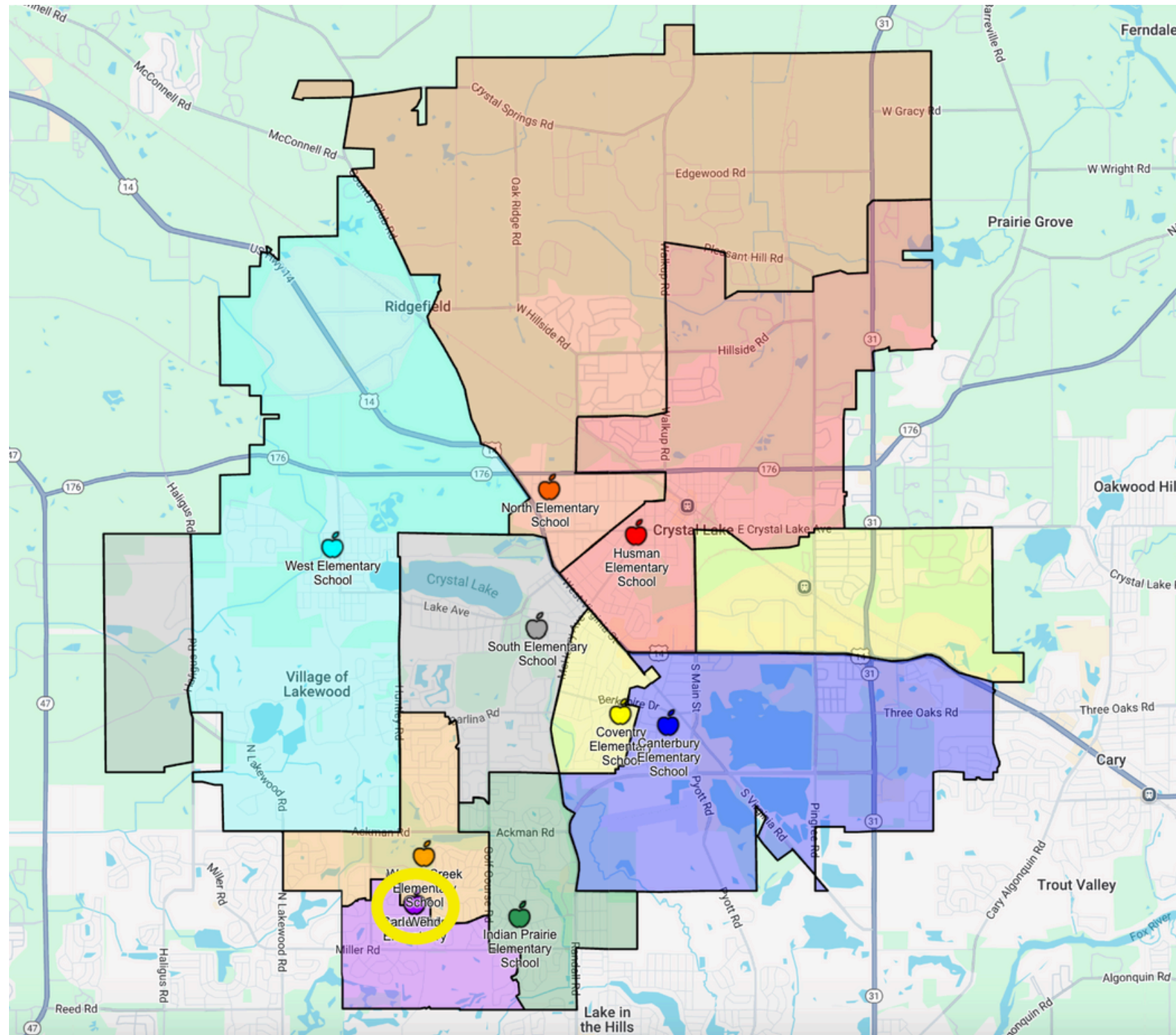


# Coventry Elementary Boundaries

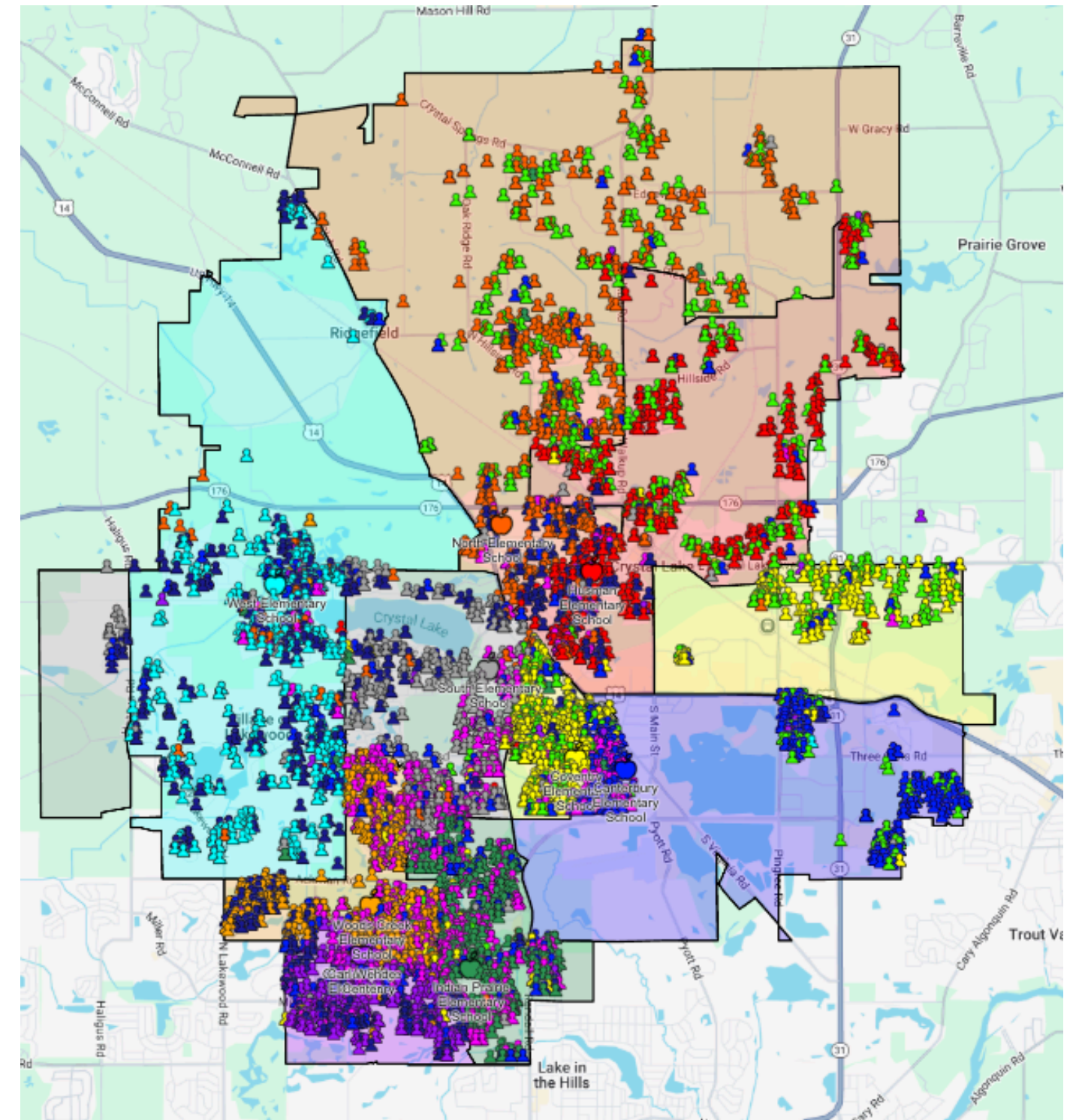
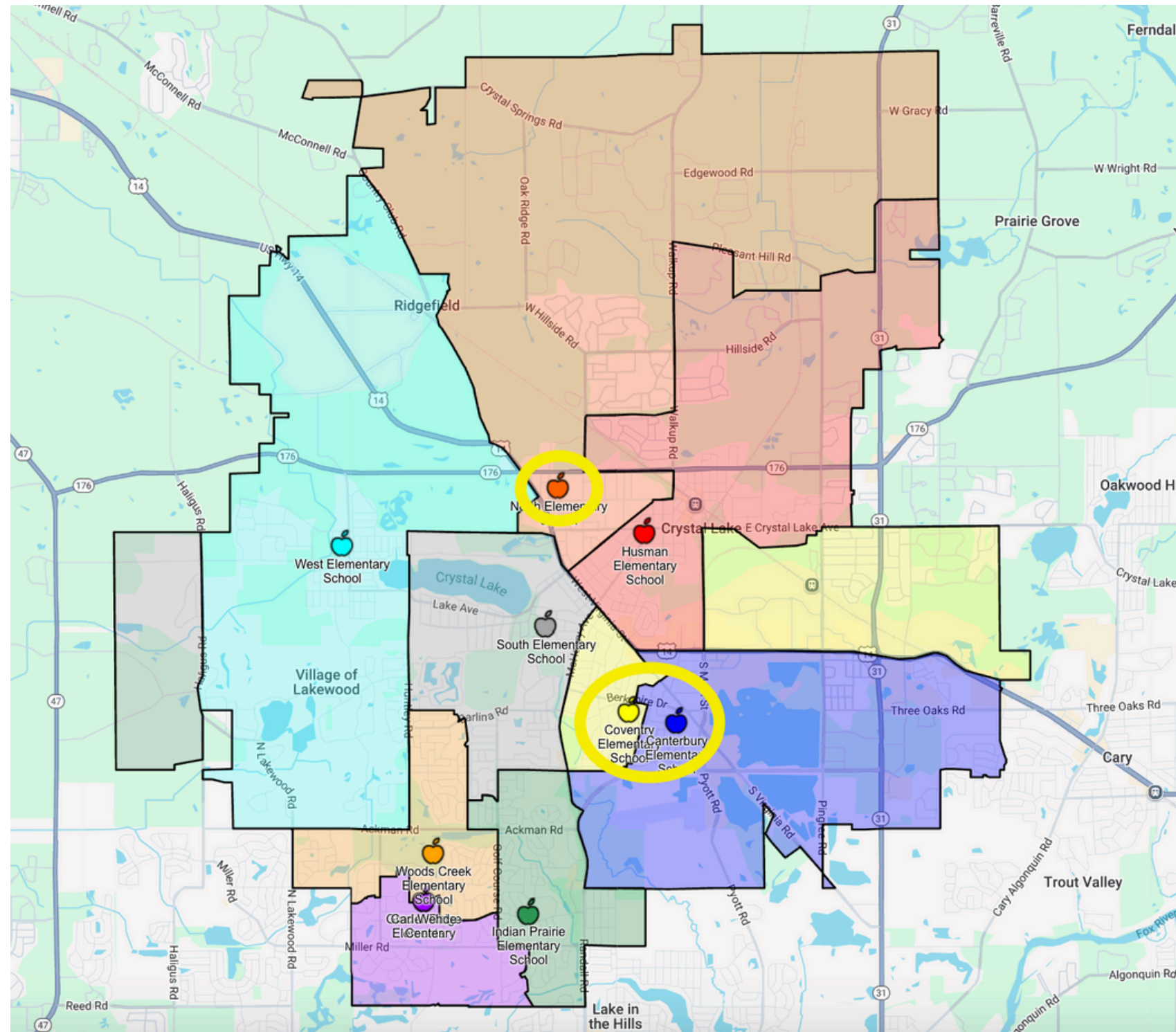


# **Program Concentration/Placement**

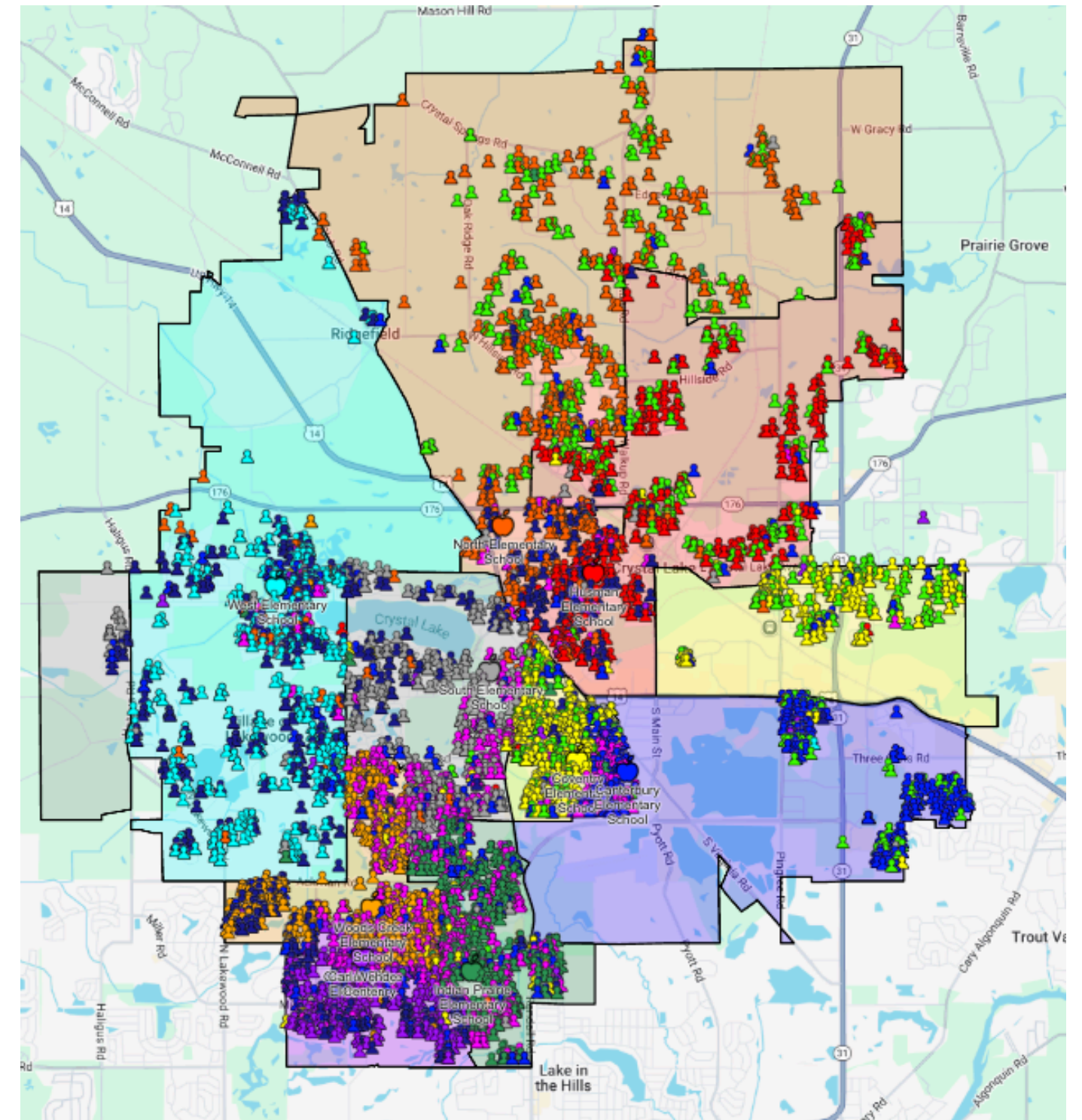
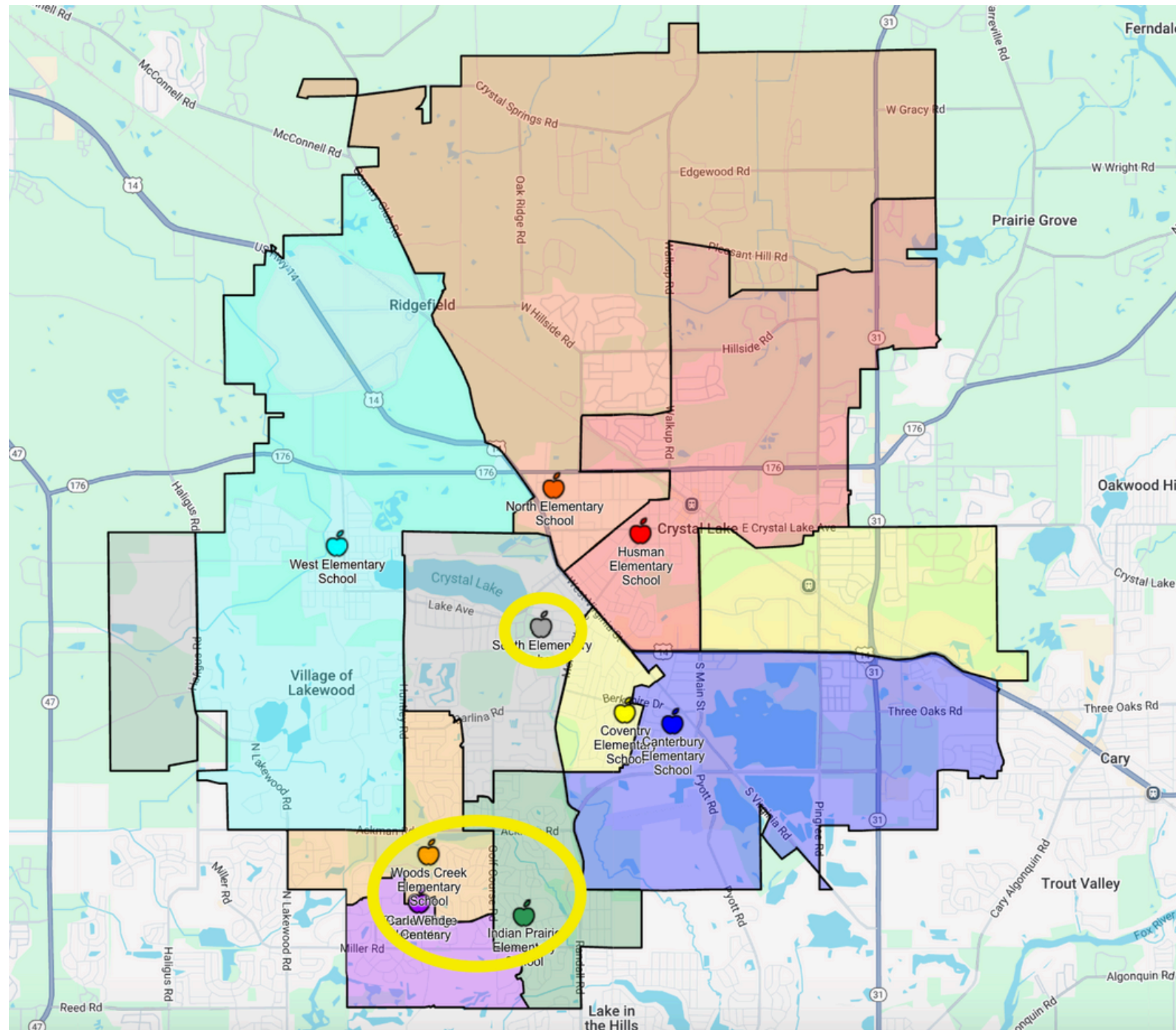
# PreK



# Dual Language



# Special Education Programs



# Class Size Imbalance

# Dual Language Class Size

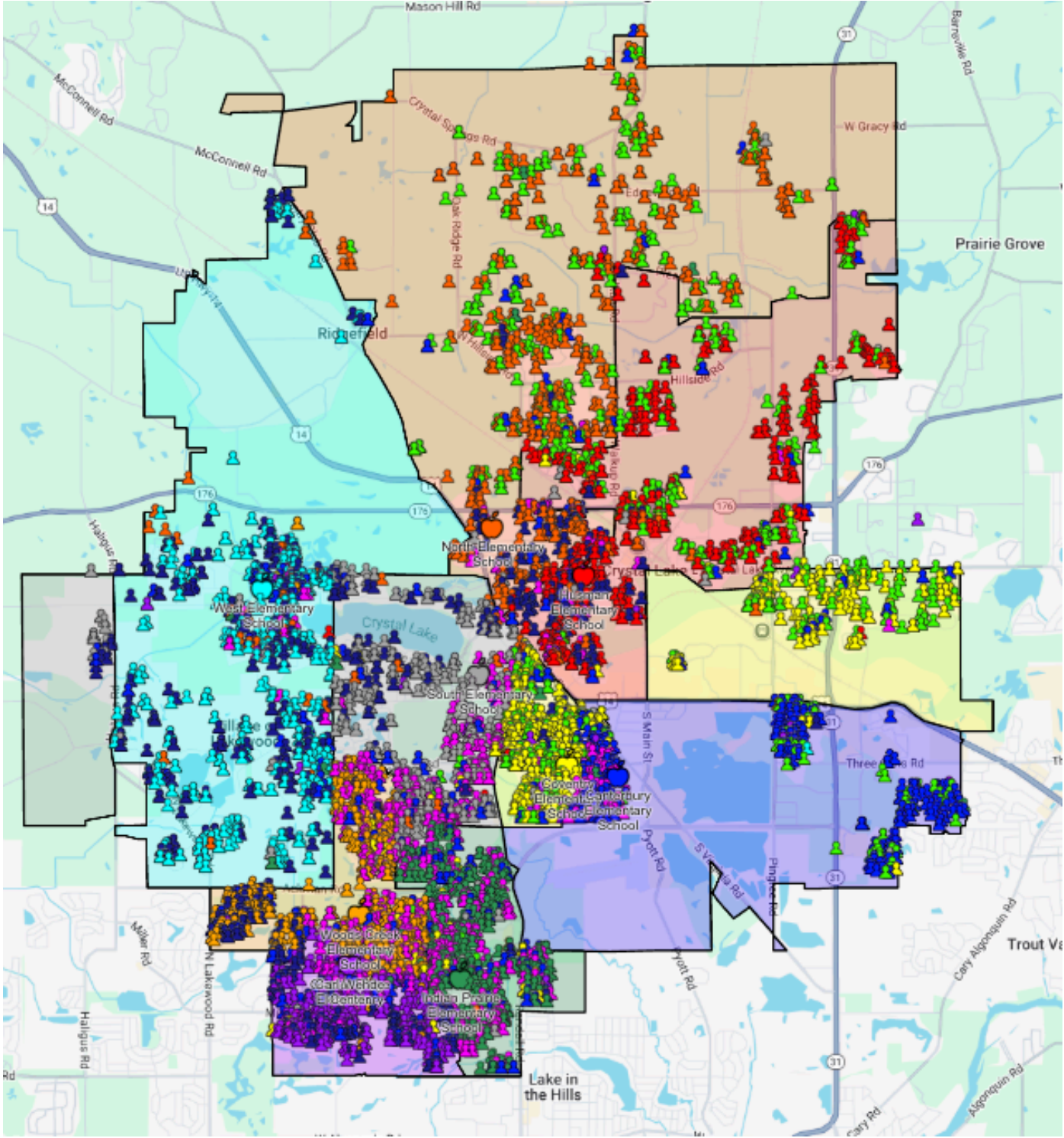
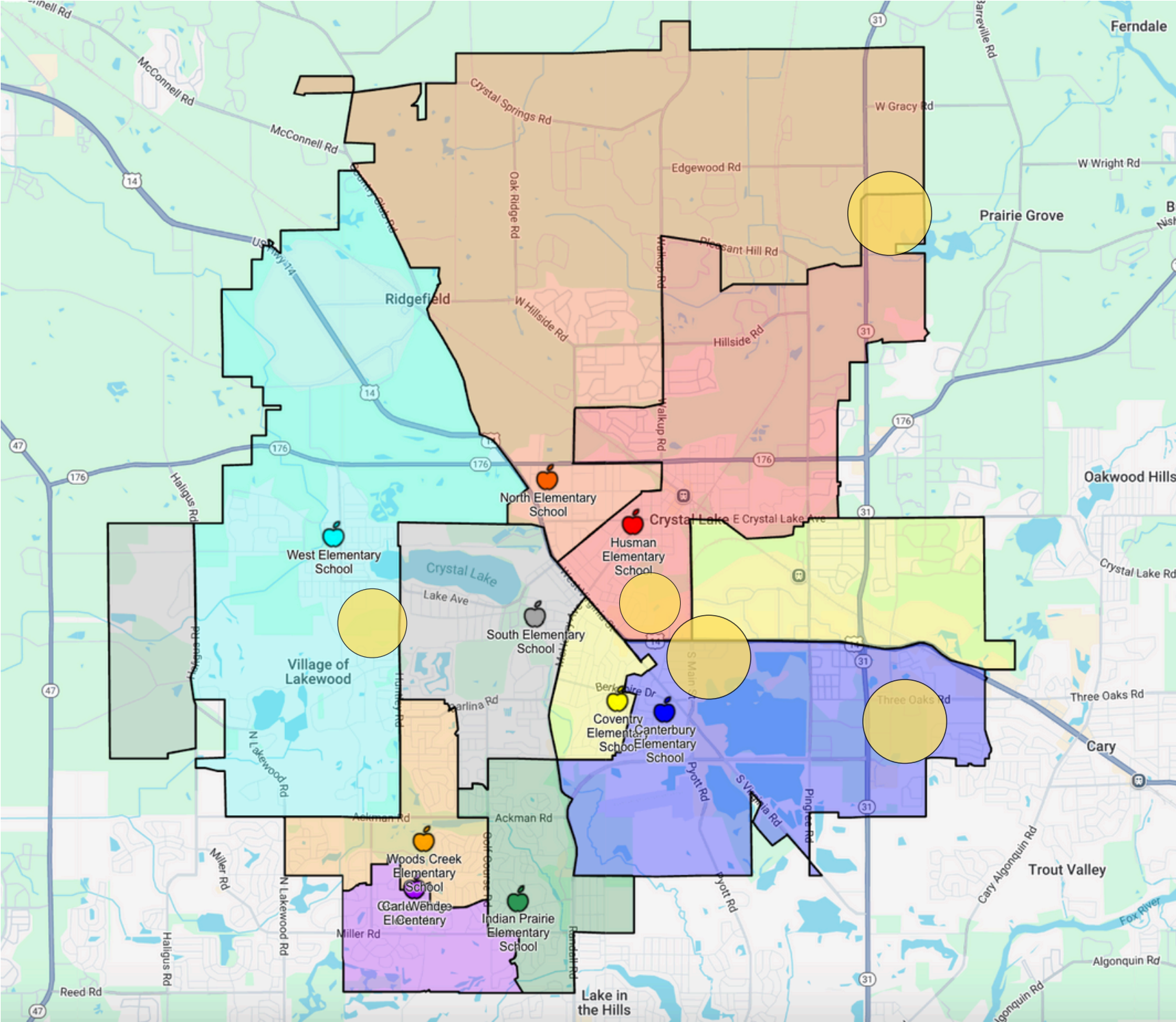
	Dual	Dual	Dual
<b>Kindy</b>	32	33	34
<b>1st</b>	40	37	39
<b>2nd</b>	40	42	36
<b>3rd</b>	46	47	36
<b>4th</b>	40	30	44
<b>5th</b>	39	47	25

# Mono Class Size

	Mono	Mono	Mono	Mono	Mono	Mono	Mono	Mono	Mono
<b>Kindy</b>	28	44	45	65	72	48	51	51	59
<b>1st</b>	37	57	56	82	68	56	56	75	63
<b>2nd</b>	35	64	41	63	76	67	61	73	88
<b>3rd</b>	53	59	42	80	80	64	64	85	75
<b>4th</b>	28	57	67	78	89	77	62	95	86
<b>5th</b>	32	61	72	104	58	73	61	92	89

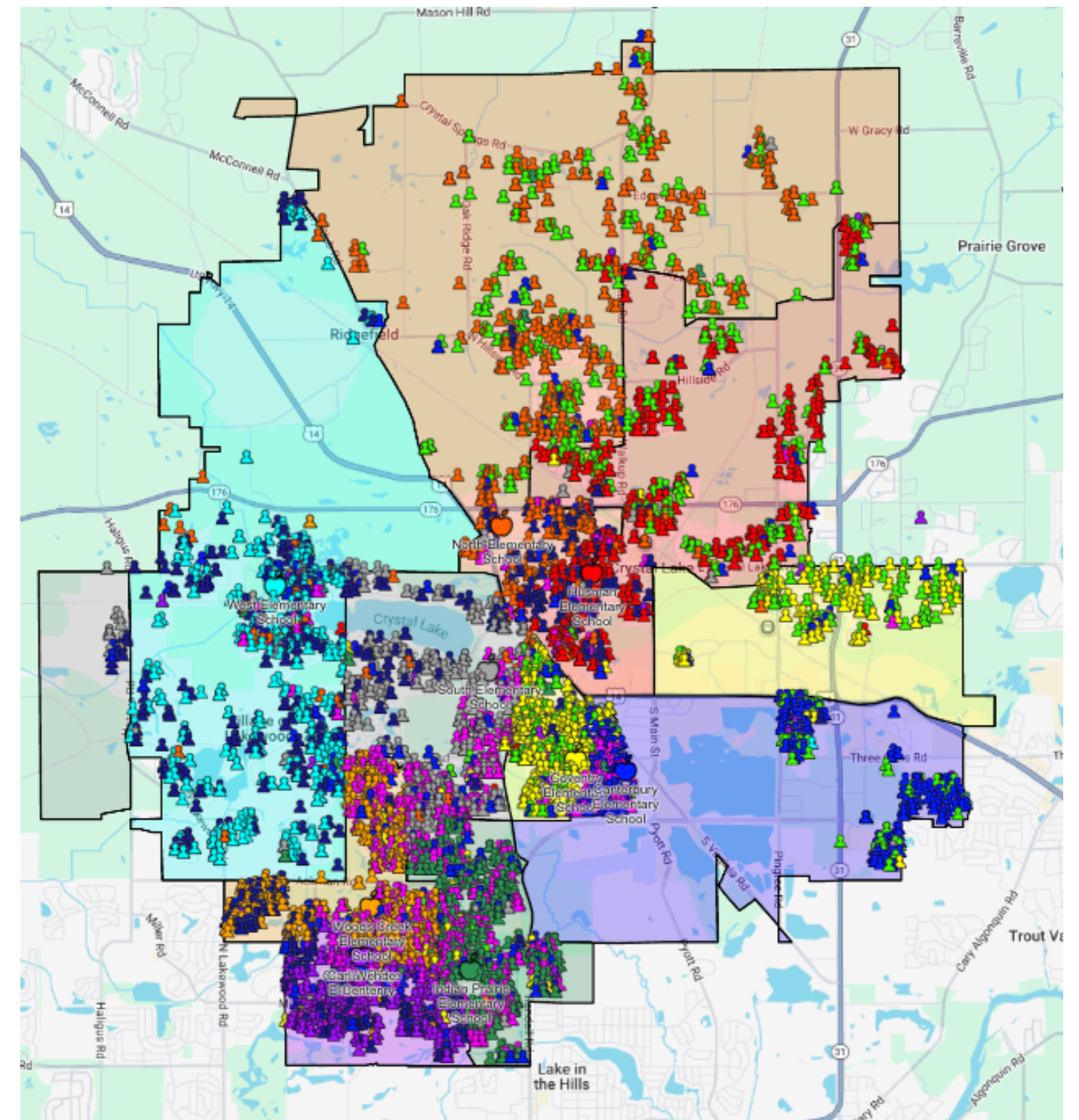
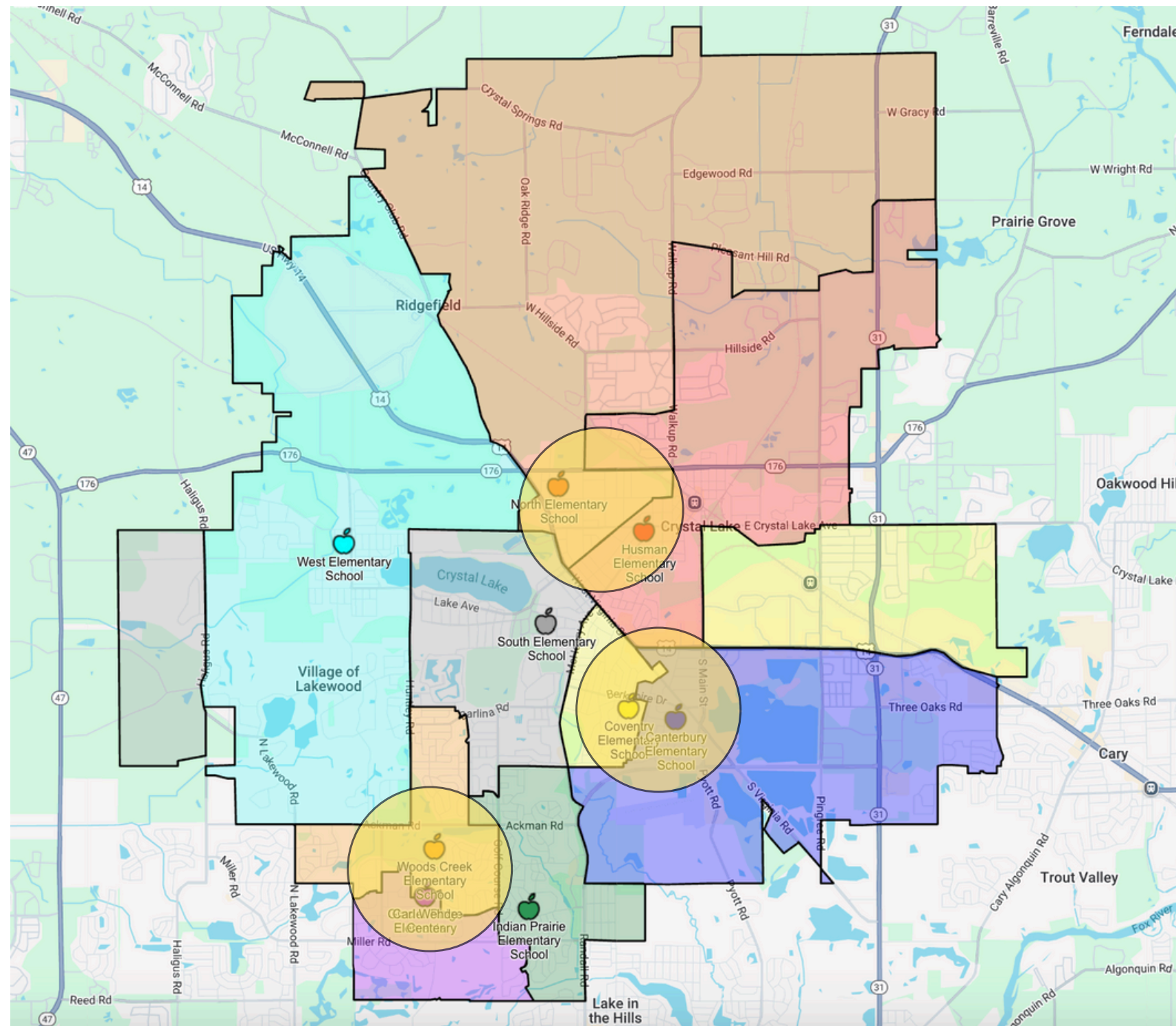
# **Population Growth vs. Building Capacity & Location**

# Growth Pockets



# Proximity of Schools

# Proximity of Buildings



# What's Next

- The Boundary Committee is meeting monthly
- Opportunities for parents, guardians, and the community to provide feedback will be provided- check the Focus on 47 newsletter for updates