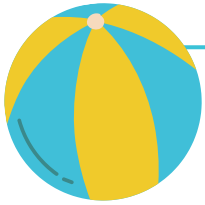


Louisiana SUN Bucks



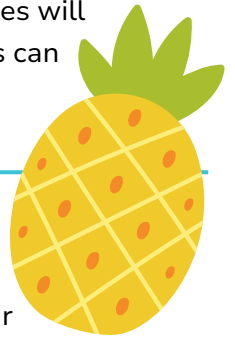
What are SUN Bucks?

Louisiana SUN Bucks provides families with a single, one-time benefit of \$120 for each eligible child to buy groceries during the summer when school meals are not available. Most eligible families will receive SUN Bucks automatically, but some parents must apply. Children who get SUN Bucks can still participate in other summer meal programs.



How does SUN Bucks work?

Like SNAP, SUN Bucks benefits are loaded onto an EBT card and mailed to your address or added to your household's existing SNAP or SUN Bucks EBT card. You can use SUN Bucks benefits to buy fruits, vegetables, meat, whole grains, and dairy at grocery stores, farmers' markets, and other retailers that accept SNAP benefits, including these [online retailers](#).



Is my child eligible for SUN Bucks?

Your child will be automatically enrolled in SUN Bucks if:

- Your child was born between August 8, 2006, and July 1, 2019, and received SNAP, FITAP, KCSP, or income-based Medicaid anytime between July 1, 2024, and August 8, 2025.
- Your child applied and was **individually approved** to receive free or reduced-price school meals through the National School Lunch or School Breakfast Program.



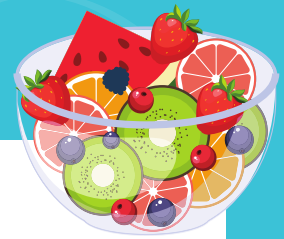
Children who attend **Community Eligibility Provision schools** and do not receive any of the above benefits will need to apply to determine eligibility. Not sure if your school is a CEP school? Check here dcfs.la/cep24

Even if your family doesn't fall into one of the categories listed above, your child may still be eligible for SUN Bucks based on your family's income.

Did you move recently? Do any of these programs have an old address for you?

Update your address with SNAP, Medicaid, FITAP, KCSP, your foster care worker and your child's school to ensure your SUN Bucks benefits are mailed to the correct address!





How do I enroll my child in SUN Bucks?

Most families will get SUN Bucks automatically, but some families may need to apply for the program.

If the household is not automatically enrolled and may be eligible, they can get SUN Bucks by filling out an application at <https://louisiana.summertimeapp.com/>. Visit sunbucks.la.gov for updates. And be sure to follow DCFS on Facebook, X/Twitter, and Instagram for the latest news!

How long do I have to use my child's SUN Bucks?

Under federal rules, SUN Bucks benefits must be used within 122 days of being loaded to your card. Any unused benefits on your card after 122 days will expire. Expired benefits cannot be replaced or put back on your card.



What do families need to do?

The most important thing families can do is to make sure their mailing addresses are up-to-date on their SNAP, FITAP, KCSP and Medicaid cases **and** with their child's school. **If needed, new EBT cards will be mailed to the address on file.**

If you have lost your household's EBT card, call 1-888-997-1117. To request a replacement, SNAP recipients can also visit www.LifeInCheckEBT.com, use the LifeInCheck EBT app, or log-in to CAFE to request a new card.



Can my child participate in other summer meal programs?

Yes, to find a SUN Meals summer meal site near you, visit: <https://www.fns.usda.gov/meals4kids>, call 1-866-3-HUNGRY or 1-877-8-HAMBRE, or text 914-342-7744 with the keyword "summer meals" to find the location closest to you.



To learn more about SUN Bucks, visit sunbucks.la.gov or scan the QR code

