

Advanced Math Program

at Boulder Universal

2025-2026



**This
Presentation**



**BU AMP
Website**

INTRODUCTIONS

Boulder Universal



Eric Moroye
Principal



Kris Kim
Assistant Principal



Amber Monroe
AMP Teacher



Sarah Stone
AMP Teacher



Hanna Frazier
AMP Teacher



**Carlota
Loya Hernandez**
AMP Teacher



TABLE OF CONTENTS

1. Why was AMP created?
2. Qualification for AMP
3. What to expect in AMP
4. Upcoming Dates
5. Questions: Note Cards



AMP Originated in **Fall 2021**



District

Initiated by district leadership



Equitable

Provides equitable access to advanced math for all schools



Support

Supports schools to offer advanced math when schools do not have FTE to teach in house





30 BVSD Schools

Currently participate in AMP

Aspen Creek	BCSIS	Birch	Coal Creek	Columbine
Community Montessori	Creekside	Crestview	Douglass	Eisenhower
Eldorado	Fireside	Flatirons	Foothill	Heatherwood
Kohl	Lafayette	Louisville Elementary	Louisville Middle School	Meadowlark
Mesa	Monarch PK8	Nederland	Pioneer	Ryan
Sanchez	Superior	University Hill	Whittier	BU



BU AMP COURSE OFFERING 25-26

4/5 Compacted
4th and 5th grade math

4/5

Advanced 1
6th grade and half of 7th grade

Adv 1

Accelerated 7
7th and 8th grade math

7A



Criteria to Qualify for AMP Classes

	iXL / iReady / MAP Scores	Standards Mastered	Qualitative Criteria
4/5 Compact	<ul style="list-style-type: none"> ✓ Above beginning of 4th Grade Level 	<ul style="list-style-type: none"> ✓ 3rd Grade Math ✓ Multiplication Facts 	<ul style="list-style-type: none"> ✓ Outstanding Homework and Classwork Completion Rate
Advanced 1	<ul style="list-style-type: none"> ✓ Above beginning of 6th Grade Level 	<ul style="list-style-type: none"> ✓ 5th Grade Math & Rapid Math Facts ✓ Whole Number, Decimal, and Fraction Ops (+ - × ÷) 	<ul style="list-style-type: none"> ✓ Enthusiastic Math Learner ✓ Tenacious Problem Solver ✓ Resilient in Challenges ✓ Self Advocates
Accelerated 7	<ul style="list-style-type: none"> ✓ Above beginning of 7th Grade Level 	<ul style="list-style-type: none"> ✓ 6th Grade Math & Rapid Math Facts ✓ Whole Number, Decimals, and Fraction Ops (+ - × ÷) 	<ul style="list-style-type: none"> ✓ Motivated & Committed to be in a challenging math course

The classroom teachers will have your child's data - please check with them for specific scores



STUDENT EXPECTATIONS

Engaged

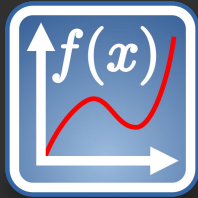
Effort

Self Advocate

Responsible



DATA BASED INSTRUCTION



Content Level & Beyond

Students are learning and mastering fast paced content level standards and sometimes beyond grade level



Data Backed Success

Previous and current year successes measured using Diagnostic Data, Formative, and Summative Assessments



WHAT TO EXPECT



Collaboration

Opportunities for exploration during lessons such as gallery walks, two-minute partner share, group problem solving, and breakout room collaborative structures



Daily Instruction

LIVE Guided Instruction and feedback used to build math concepts along with positive relationships and rapport with students



Interactive Practice

Daily opportunities for practice during live lessons, warm-ups, and homework providing instant feedback for students



A TYPICAL MATH CLASS



Login to Google Meet

Student logs into Google Meet with a Chromebook and headphones during assigned class time



Warm-Up

Students complete a warm-up as they join the class



Interactive Lesson

Students participate in an engaging lesson that includes virtual and in-person group collaboration and notetaking

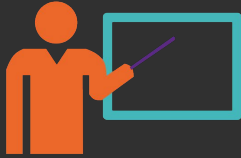


Start Math Practice

Students start their online math homework to practice material for the day and are able to ask the teacher questions as needed

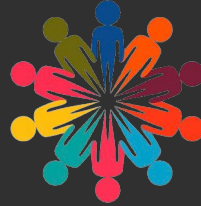
Learning Leader Support Available In-Person Throughout Entire Class

SCHOOL BASED LEARNING LEADER



Student Support

Provides in-person support of students when needed and communicates with BU math teacher



Collaboration Support

Assists students with group work and independent work during lessons and activities



Technology Support

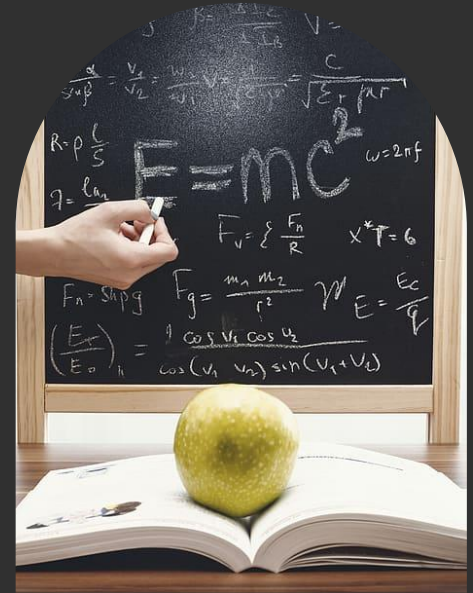
Provides on the spot Chromebook support when needed



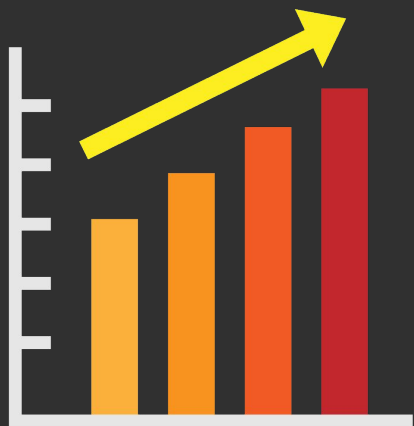
BU TEACHER COMMUNICATION

Clear Math Teacher communication throughout the year such as:

- ★ Newsletters to Parents
- ★ 1:1 Parent-Teacher meetings as needed
- ★ Recurring Communication to Principals, classroom Teachers, and Learning Leaders
- ★ Student to Teacher communication in Schoology



ACCELERATED MATH DATA HIGHLIGHTS



4/5 Compact iXL Data

- Average EOY score = 620

Beginning of 6th Grade Math

Advanced 1 iXL Data

- Average EOY score = 776

Mid-End of 7th Grade Math

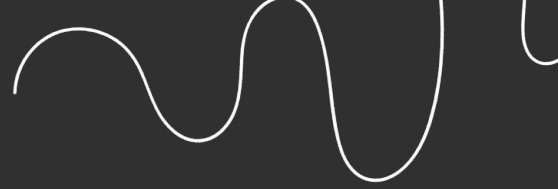
Accelerated 7 iXL Data

- Average EOY score = 920

Beginning of 9th Grade Math



FAMILY CONSIDERATIONS



- ★ All advanced math classes move at an accelerated pace
- ★ Homework will be assigned most days to provide the necessary practice for mastering the standards
- ★ Compacted Courses are fast-paced, which at times may lead to productive struggle
- ★ All classes require mastery of multiplication facts, fractions, and decimals
- ★ The success in each advanced class is closely linked to students' dedication and interest. Without a strong passion for math and consistent effort, the school year may become particularly challenging.



UPCOMING EVENTS



May

AMP Open House with
Teacher Meet and Greet



August

BU Teacher Virtual Back
to School Night



August

BU Math Teachers visit
schools, meet students &
teachers, send welcome
letters to parents, and
students get math
goodies





Questions?



THANK YOU!

If you have any other specific questions regarding the classes, feel free to reach out!

- ★ Eric Moroye (eric.moroye@bvsd.org) - *Principal*
- ★ Kris Kim (kris.kim@bvsd.org) - *Assistant Principal*
- ★ Amber Monroe (amber.monroe@bvsd.org) - *Math Teacher*
- ★ Sarah Stone (sarah.stone@bvsd.org) - *Math Teacher*
- ★ Hanna Frazier (hanna.frazier@bvsd.org) - *Math Teacher*
- ★ [BVSD Math Pathways Info](https://bvsd.org) (bvsd.org)

