



Anna ISD | Administration Building



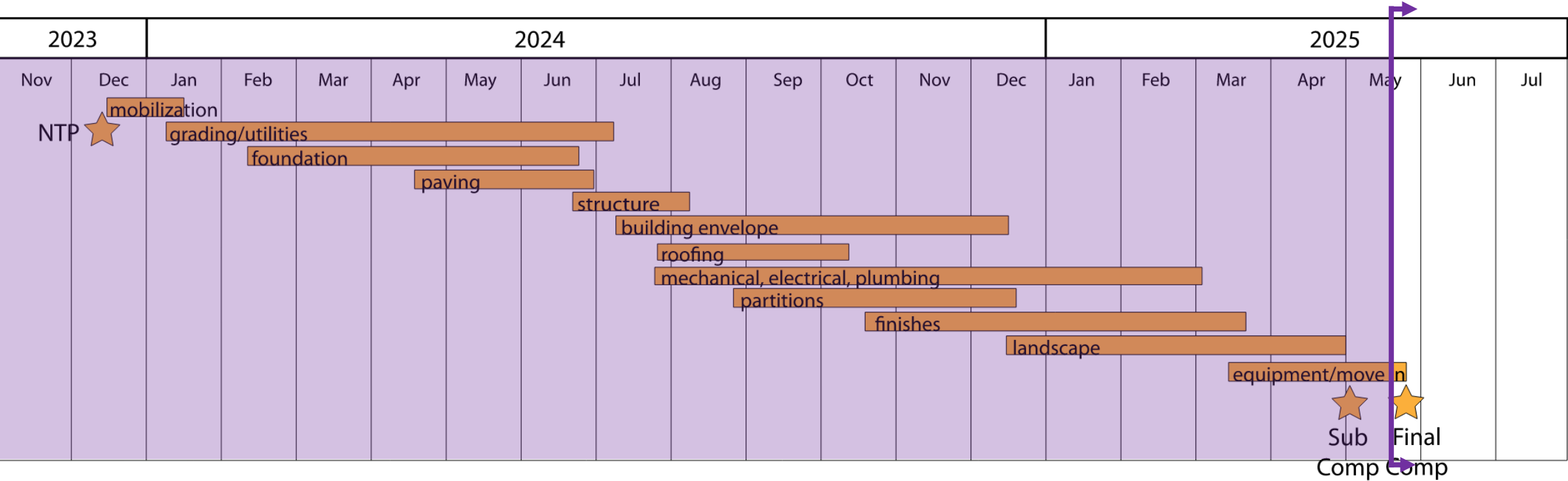
Clemons Creek MS - Addition



MAY 2025  
CONSTRUCTION UPDATE

# Anna ISD Administration Building

## Construction Update - May 2025



Construction Schedule





# Anna ISD Administration Building

Construction Update - May 2025



WRA





# Anna ISD Administration Building

Construction Update – May 2025



EXT. SIGNAGE INSTALLATION ON  
GOING

ADMINISTRATION  
OFFICE ENTRY





# Anna ISD Administration Building

Construction Update – May 2025



LANDSCAPING COMPLETE

 ANNA ISD  
ADMINISTRATION





# Anna ISD Administration Building

Construction Update – May 2025



LANDSCAPING COMPLETE



WRA





# Anna ISD Administration Building

Construction Update - May 2025





# Anna ISD Administration Building

Construction Update - May 2025





# Anna ISD Administration Building

Construction Update – May 2025



SITE WORK COMPLETE





# Anna ISD Administration Building

Construction Update – May 2025

SIGNAGE AT RECEPTION  
COMPLETE

ANNA  
INDEPENDENT SCHOOL DISTRICT





# Anna ISD Administration Building

Construction Update – May 2025



FURNITURE IN PLACE



WRA





# Anna ISD Administration Building

Construction Update – May 2025



WRA





# Anna ISD Administration Building

## Construction Update - May 2025

FURNITURE INSTALLED



WRA





# Anna ISD Administration Building

## Construction Update - May 2025



OPERABLE PARTITIONS  
INSTALLED

FURNITURE IN PLACE



WRA





# Anna ISD Administration Building

## Construction Update - May 2025

**A/V ROOM EQUIPMENT IN  
PLACE AND PROTECTED**



WRA





# Anna ISD Administration Building

Construction Update – May 2025





# Anna ISD Administration Building

Construction Update – May 2025

KITCHEN EQUIPMENT IN PLACE





# Anna ISD Administration Building

Construction Update – May 2025



EXT. FURNITURE IN PLACE



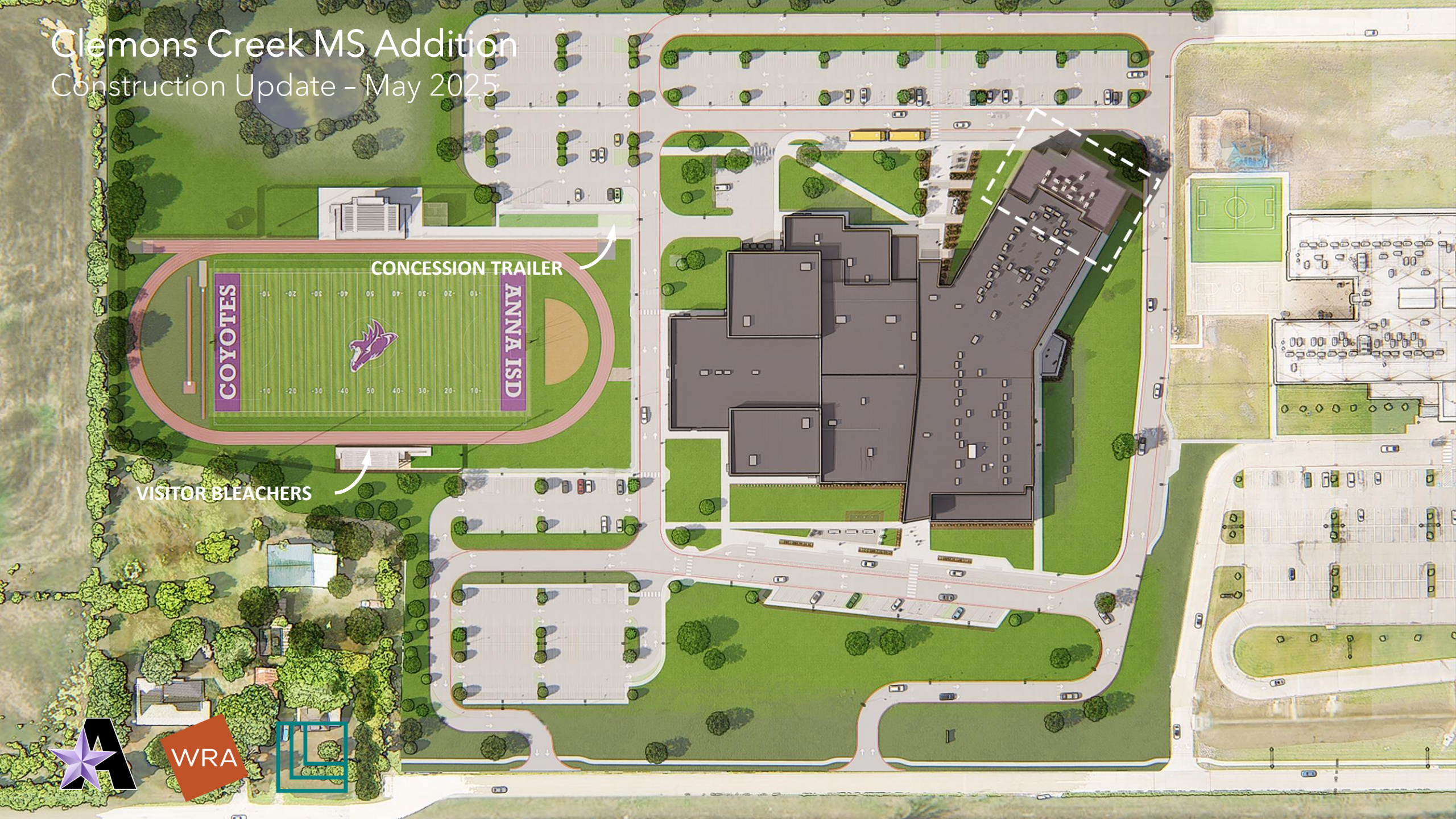
WRA





# Clemons Creek MS Addition

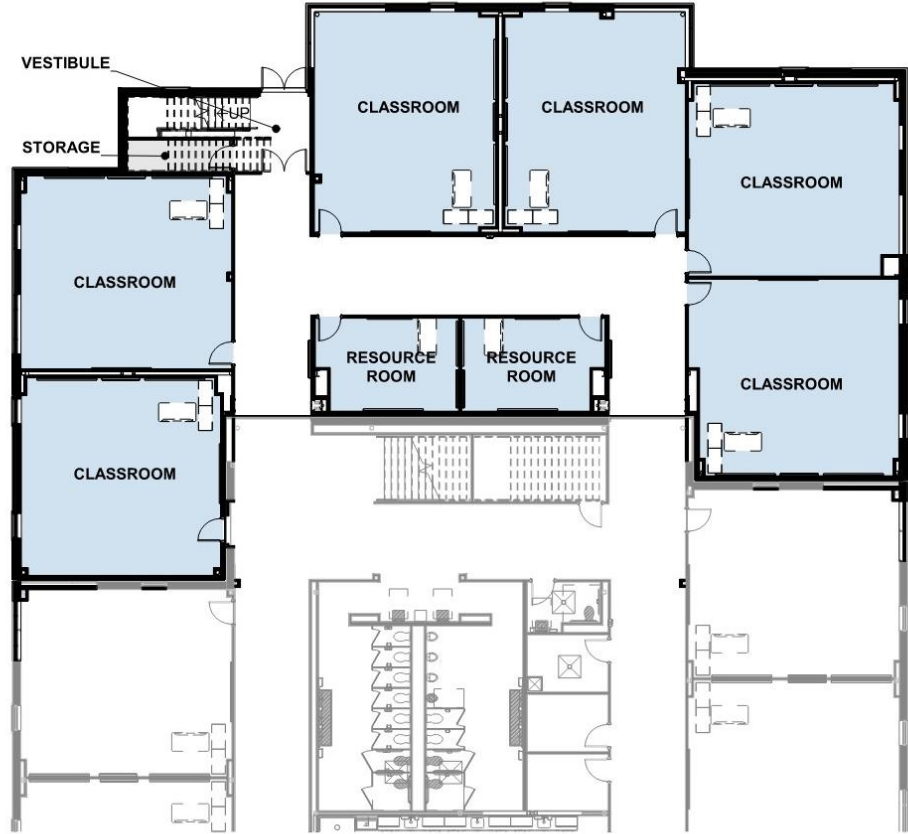
Construction Update - May 2025





# Clemons Creek MS Addition

Construction Update - May 2025



LEVEL 1



LEVEL 2





# Clemons Creek MS Addition

Construction Update – May 2025





# Clemons Creek MS Addition

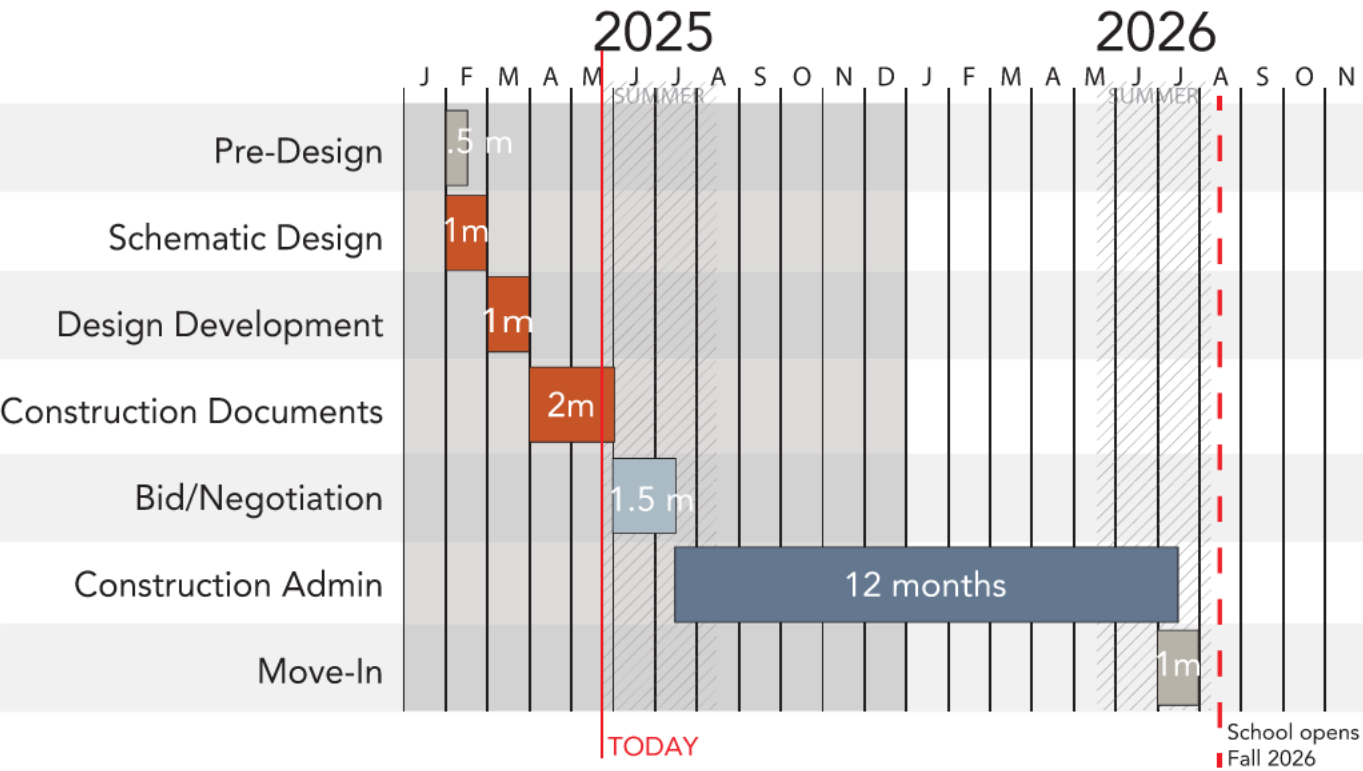
Construction Update – May 2025





# Clemons Creek MS Addition

## Construction Update - May 2025



### MILESTONE DATES

Kickoff   Programming	Feb. 2025
100% Schematic Design Documents	End of Feb. 2025
100% Design Development Documents	End of March 2025
50% Construction Documents	March 17 2025
75% Construction Documents	April 7 2025
Early Package Release	April 17 2025
90% Construction Documents	April 28 2025
100% Construction Documents	May 22 2025
Bid Date	June 15 2025
Review GMP	July 11 2025
GMP Approval   Construction Notice to Proceed	July 17 2025
Substantial Completion   Move In	July 2026

Project Schedule







Q & A

