

**D155**



# Prairie Ridge Stadium Renovation

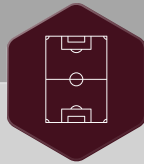
These enhancements will improve accessibility and safety while addressing erosion and drainage issues. The new stadium will accommodate band and color guard, flag football, lacrosse, P.E. classes, soccer, and track and field.



## Stadium Enhancements



**Safety & Security**



**Turf Field**



**Expanded Seating**



**Track Resurfacing**



**Ticket Booth**



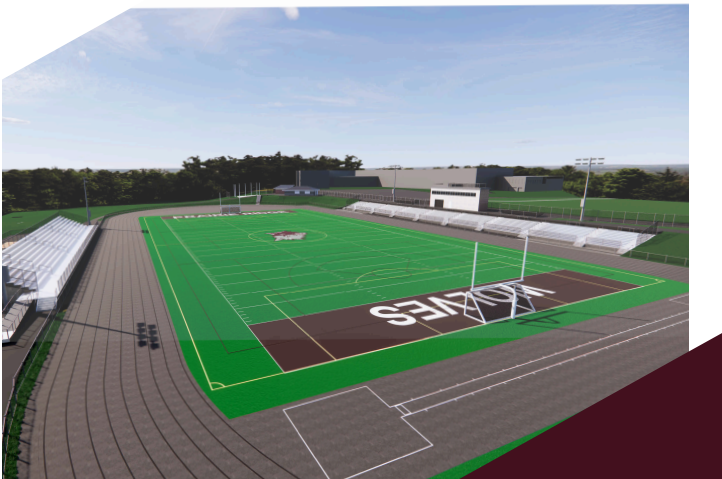
**Restroom & Common Areas**



**Lighting**



**Sound System**



## Project Timeline

- June - August 2025 | Board Reviews Bids
- Nov. 2025 - Feb. 2026 | Construction Begins\*
- August 7, 2026 | Anticipated Completion

\* The construction timeline is weather-dependent and may adjust for delays as needed. These are anticipated construction dates.



# PRAIRIE RIDGE STADIUM RENOVATION



## TAXPAYER IMPACT

The district will ***not*** seek additional funds from taxpayers beyond the tax levy and the capital campaign.

The Property Tax Extension Limitation Law, commonly referred to as "TAX CAP" or "PTELL" limits the increase in property Tax Extensions to 5% or the Consumer Price Index (CPI), whichever is less, not counting new construction or Bond & Interest Obligations.

## ALTERNATE REVENUE BONDS

In January, the Board of Education approved alternate revenue bonds not to exceed \$14 million to fund renovations and improvements for school theaters and stadiums. The District will pay off the bond, plus interest, over the next 20 years.

## CAPITAL CAMPAIGN

The District will launch a capital campaign soon to help raise additional funds and expand the District's ability to meet the goals outlined in the strategic plan.

## NEIGHBOR RELATIONS

As part of our commitment to our community, the District has designated a District Administrator to manage neighbor relations. D155 is working with the City of Crystal Lake throughout this process.

For questions about the stadium renovations, please email [distmail@d155.org](mailto:distmail@d155.org); the Director of Communications will respond directly.

