

Vision

The vision of the Oxnard School District's D/HH* program is to cultivate a vibrant community that values diversity, fosters meaningful connections, and advocates for the rights of all learners. We aim to be a leading educational program that nurtures a community of students to be empowered with the knowledge and self-advocacy skills needed to lead fulfilling and meaningful lives.

Mission

The mission of the Oxnard School District's D/HH* program is to provide an accessible and supportive educational environment that empowers deaf and hard-of-hearing students to achieve academic success and personal growth. We strive to foster strong connections within the community, promote advocacy for the rights and needs of our students and their families, and enhance their quality of life through comprehensive educational planning that addresses both academic and social-emotional development. Through innovative teaching methods, state-of-the-art resources, and a focus on language development, we aim to foster confident communication, academic proficiency, and independence, ensuring that every student has the tools they need to thrive.

*D/HH – Deaf and Hard of Hearing

*ASL – American Sign Language



The Oxnard School District values the importance of language access and communication as a life skill for our deaf and hard of hearing students. Oxnard School District and the D/HH program are committed to meet the diverse communication needs of our D/HH students and their families.

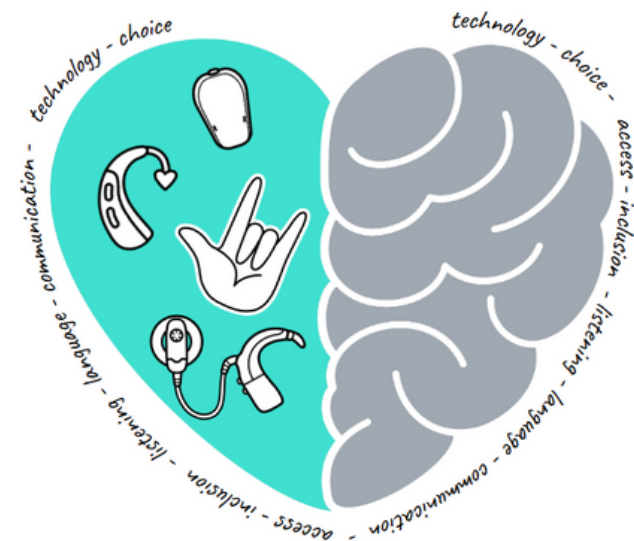
We provide opportunities for parent support and involvement through D/HH parent workshops, Auditory Verbal Therapy (AVT) sessions/resources, and Family Sign Language classes.

Parent/Community ASL Classes for OSD DHH Families

These classes are designed to teach basic to intermediate American Sign Language skills. They are basic courses in conversational ASL* including vocabulary, fingerspelling, and sentence practice. These courses occur after school.



www.oxnardsd.org



Oxnard School District's Deaf and Hard of Hearing (D/HH) Program and Services



What's D/HH?

D/HH stands for Deaf and Hard of Hearing.

D/HH is a broad term that encapsulates a wide range of hearing levels. Individuals with hearing differences utilize a variety of communication methods, including amplification of sound through the use of hearing technology to listen and speak, learning American Sign Language or a combination of the two depending on each student's individual needs.

Education Code

Per California Education Code 59001.2, OSD has designed D/HH Programs and Services with the following legislation in mind:

- It is essential for the well-being and growth of deaf and hard-of-hearing pupils that educational programs recognize the unique nature of deafness and ensure that all deaf and hard-of-hearing pupils have appropriate, ongoing, and fully accessible educational opportunities.
- It is essential that a deaf or hard-of-hearing pupil obtain an education in which his or her parents are involved in determining the extent, content, and purpose of programs.



Access for All

Studies of language modality have indicated that, neurologically, the brain seeks patterns in language, whether auditory or visual (Petitto et al., 2000). Our DHH Programs and Services aim to align our supports with the increasing evidence that bilingualism does not interfere with learning language for both typically developing children (De Houwer, 2017; Nicoladis & Genesee, 1997) and those with language disorders (e.g., Goldstein, 2006; Paradis, 2007)

Community Based Instruction

Community-Based Instruction for Deaf and Hard of Hearing students using the Expanded Core Curriculum (ECC) involves engaging students in real-world situations that enhance their learning, social skills, and communication abilities.

The ECC focuses on areas that are critical for the development of deaf and hard of hearing individuals beyond the academic curriculum.

Programs & Services

○ Special Day Class

Special Day Classroom teachers are specifically trained to provide academic instruction of the common core curriculum to students with hearing differences. They cover all topics including academics, social emotional development, and advocacy.

○ Itinerant

Itinerant teachers provide support to students in a wide variety of settings (full inclusion, M/M, M/S, etc.) specifically in the areas of auditory skills, communication, and self advocacy as it relates to their hearing loss.

○ Specialists

Specialists have additional experience and training in their respective areas, and can provide specialized services such as auditory verbal therapy (AVT) or sign language instruction.

○ Co-Taught Model

A co-taught model in special education is an instructional approach where two or more educators collaborate to teach a diverse group of students, including those with special needs, in the same classroom. This model typically involves a general education teacher and a special education teacher working together to provide differentiated instruction and support to all students. This is implemented in grades 6 through 8.