

C G SIVELLS EL
2024-2025 Campus Improvement Plan
2024/2025

SES Positive Vibes

Donna Grissom
1605 N Alabama Rd.
979.532.6866
dgrissom@whartonisd.net

Date Reviewed:

Date Approved:

C G SIVELLS EL

Mission

The mission of Sivells Elementary is to foster a love for learning by inspiring and teaching in a safe and secure environment.

Vision

The vision of Sivells Elementary is to empower all students to be successful.

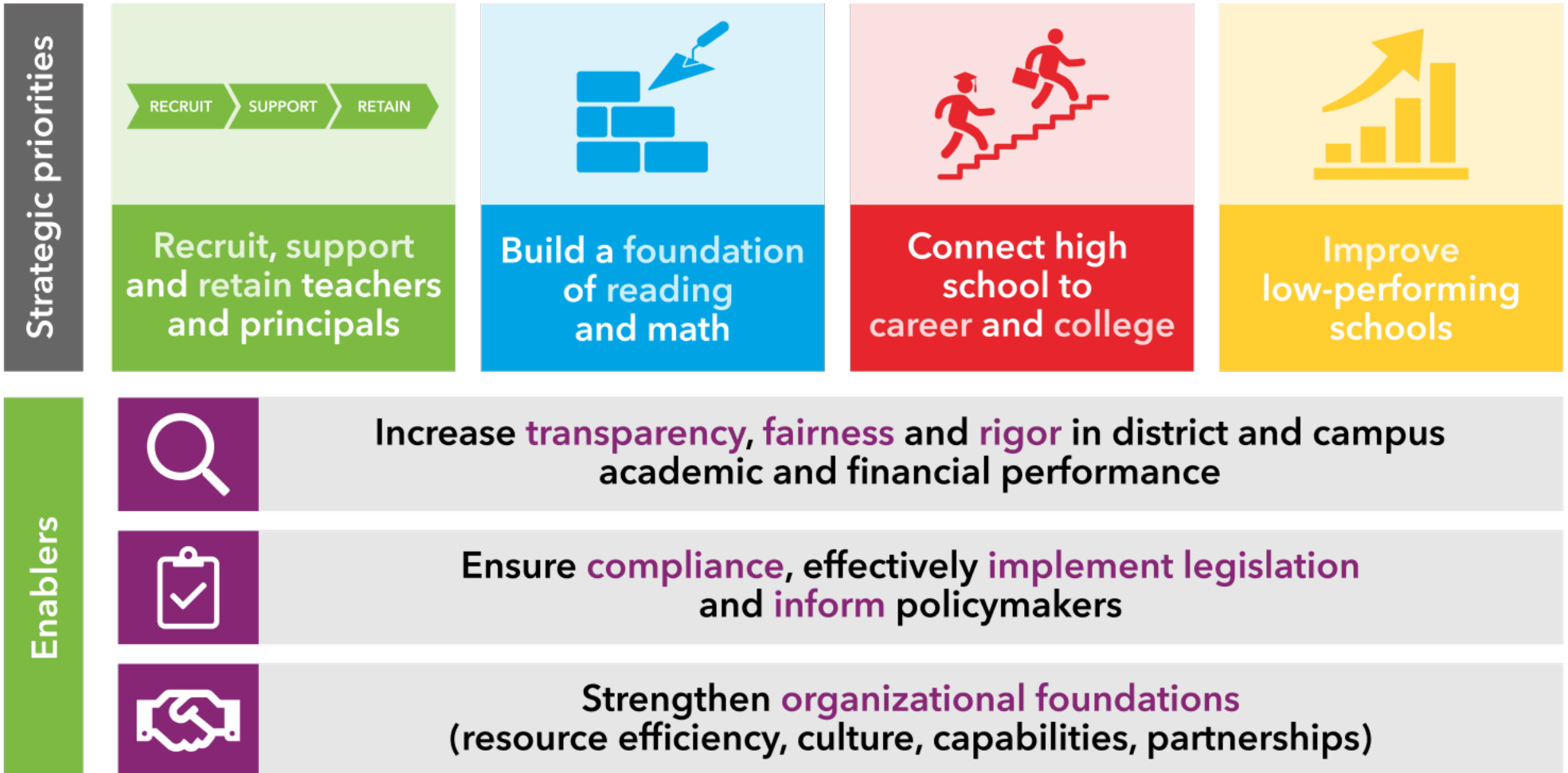
Nondiscrimination Notice

C G SIVELLS EL does not discriminate on the basis of race, color, national origin, sex, or disability in providing education services, activities, and programs, including vocational programs, in accordance with Title VI of the Civil Rights Act of 1964, as amended; Title IX of the Educational Amendments of 1972; and section 504 of the rehabilitation Act of 1973; as amended.

Site Base Decision Making Committee

Name	Position
Grissom, Donna	Principal
Hernandez, Catherine	Assistant Principal
Williams, Landy	Security/District Representative
Williams, Kim	Reading Interventionist
Thompson, Destini	PK4 Teacher
Griffith, Erlicia	K Teacher
Kalina, Diane	GT Teacher
Marroquin, Dalia	Bilingual Teacher
Merino, Jesse	Parent
Ortiz, Bianca	Parent

Every child, prepared for success in college, a career or the military.



**adapted from TEA Strategic Plan - <https://tea.texas.gov>*

C G SIVELLS EL

Goal 1. Sivells Elementary will increase student academic achievement by at least 3% annually.

Objective 1. The percentage of Kindergarten and 1st Grade students that meet grade level or above on the mClass Reading Assessment will increase by 3%, as evidenced by growth from the BOY to EOY assessment.

Activity/Strategy	Person(s) Responsible	Timeline	Resources	Evaluation
1. Teachers will implement vocabulary by incorporating TEKS academic vocabulary words into daily lesson plans. (Title I SW Elements: 2.5) (Target Group: All) (Strategic Priorities: 2,4) (ESF: 5,5.1,5.2)	Assistant Principal, Instructional Coach(es), Principal, Teacher(s)	August 2024-May 2025	(F)Title I, (O)Local Districts	Criteria: Lesson plans; Data from T-TESS walkthroughs/observations and instructional rounds; Completed curriculum and instruction PLC agendas and sign-in sheets; Data from diagnostic screeners 02/10/25 - Pending
2. Teachers will use data-driven instruction to close reading learning gaps through small-group tiered instruction and ongoing grade-level planning and data digs. (Title I SW Elements: 2.5) (Target Group: All) (Strategic Priorities: 2,4) (ESF: 5,5.1,5.3,5.4)	Assistant Principal, Instructional Coach(es), Principal, Teacher(s)	August 2024-May 2025	(F)Title I, (O)Local Districts	Criteria: Data from T-TESS walkthroughs/observations and instructional rounds; Completed curriculum and instruction PLC agenda and sign-in sheets; Data from diagnostic screeners; SES Student Data Growth MTSS chart and unit assessments
3. Teachers will attend daily PLCs to plan curriculum and instruction collaboratively. Teachers will receive professional development and evaluate student data. (Title I SW Elements: 2.5) (Target Group: All) (Strategic Priorities: 2,4) (ESF: 5,5.1,5.2,5.3,5.4)	Assistant Principal, Principal, Teachers	August 2024-May 2025	(F)Title I, (O)Local Districts	Criteria: Data from T-TESS walkthroughs/observations and instructional rounds; Completed curriculum and instruction PLC agendas and sign-in sheets; Diagnostic and Unit Assessment Data; SES Student Data Growth MTSS chart
4. Kindergarten and 1st-grade teachers will utilize HQIM RLA curriculum (Amplify) strategies to foster student writing skills. (Title I SW Elements: 2.5) (Target Group: All) (Strategic Priorities: 2,4) (ESF: 5,5.1,5.2,5.3,5.4)	Assistant Principal, Principal, Teacher(s)	August 2024-May 2025	(O)Local Districts, (S)Local Funds	Criteria: Data from T-TESS walkthroughs/observations and instructional rounds; Completed curriculum and instruction PLC agendas and sign-in sheets; Unit Assessment data; Student Writing Portfolios (checked monthly during PLCs)

C G SIVELLS EL

Goal 1. Sivells Elementary will increase student academic achievement by at least 3% annually.

Objective 1. The percentage of Kindergarten and 1st Grade students that meet grade level or above on the mClass Reading Assessment will increase by 3%, as evidenced by growth from the BOY to EOY assessment.

Activity/Strategy	Person(s) Responsible	Timeline	Resources	Evaluation
5. Kindergarten and 1st-grade teachers will utilize HQIM RLA curriculum (Amplify) strategies to foster reading. (Title I SW Elements: 2.5) (Target Group: All) (Strategic Priorities: 2) (ESF: 4,4.1,5,5.1)	Assistant Principal, Principal, Teacher(s)	August 2024-May 2025	(O)Local Districts	Criteria: Data from TTESS walkthroughs/observations and instructional rounds; completed curriculum and instruction PLC agendas and sign-in sheets; Unit Assessment data
6. Paraprofessionals will offer additional instructional support to teachers and students in PK, K and 1st grade classrooms. (Title I SW Elements: 2.1,2.5) (Target Group: All) (Strategic Priorities: 2,4) (ESF: 5,5.1)	Assistant Principal(s), Principal, Teacher(s)	August 2024-May 2025		Criteria: Instructional round data; Observations of small group instruction
7. Classroom teachers will provide Tier 1 and Tier 2 instructional support on a daily basis and Intervention teacher will provide Tier 3 instructional support. MTSS meetings will occur to evaluate student progress every 4-6 weeks. (Title I SW Elements: 2.5) (Target Group: All) (Strategic Priorities: 2,4) (ESF: 1,4,4.1,5,5.1,5.3)	Assistant Principal(s), Instructional Coach(es), Principal, Teachers	August 2024-May 2025		Criteria: SES Student Data Growth MTSS chart; Panorama data collection
8. PK-4 and Kindergarten bilingual teachers will implement the K12 Summit and Estrellita (en Espanol) foundational reading skills program. (Title I SW Elements: 2.5) (Target Group: EB,PRE K,K) (Strategic Priorities: 2,4) (ESF: 4,4.1)	Assistant Principal(s), Principal, Teachers	August 2024-May 2025	(F)Title I, (O)Local Districts	Criteria: Data from T-TESS walkthroughs-observations and instructional rounds; lesson plans; BOY, MOY, and EOY K-12 Summit screener data

C G SIVELLS EL

Goal 1. Sivells Elementary will increase student academic achievement by at least 3% annually.

Objective 2. The percentage of Kindergarten and 1st Grade students that meet grade level or above on the mClass Math Assessment will increase by 3%, as evidenced by growth from the BOY to EOY assessment.

Activity/Strategy	Person(s) Responsible	Timeline	Resources	Evaluation
1. Kindergarten and 1st grade teachers will utilize HQIM Math curriculum (Eureka) strategies to foster Math skills. (Title I SW Elements: 1.1,2.5,2.6) (Target Group: All) (Strategic Priorities: 2,4) (ESF: 4,4.1,5,5.1)	Assistant Principal, Principal, Teacher(s)	August 2024-May 2025	(F)Title I, (O)Local Districts	Criteria: Data from T-TESS walkthroughs/observations and instructional rounds; Unit Assessments; Completed curriculum and instruction PLC agendas and sign-in sheets; SES Student Data Growth MTSS Chart
2. Teachers will use data-driven instruction to close math learning gaps through small-group tiered instruction and ongoing grade-level planning and data digs. (Title I SW Elements: 2.5) (Target Group: K,1st) (Strategic Priorities: 2,4) (ESF: 5,5.1,5.3)	Assistant Principal, Principal, Teacher(s)	August 2024-May 2025	(F)Title I, (O)Local Districts	Criteria: Data from T-TESS walkthroughs/observations and instructional rounds; Completed curriculum and instruction PLC agendas and sign-in sheets; Diagnostic Data; SES Student Data Growth MTSS chart
3. Paraprofessionals will offer additional instructional support to teachers and students in PK, K and 1st grade classrooms. (Title I SW Elements: 2.1,2.5) (Target Group: All) (Strategic Priorities: 2,4) (ESF: 5,5.1)	Assistant Principal(s), Principal, Teacher(s)	August 2024-May 2025		Criteria: Instructional rounds/walkthrough data; Observations of small group instruction
4. Kindergarten and 1st grade teachers will implement the digital platform, Zearn, as a tool to support student growth throughout the year by completing two lessons a week. (Title I SW Elements: 2.5) (Target Group: All) (Strategic Priorities: 2,4) (ESF: 5,5.1)	Assistant Principal(s), Principal, Teacher(s)	August 2024-May 2025		Criteria: Zearn usage reports
5. Teachers will implement vocabulary by incorporating TEKS academic vocabulary words into daily lesson plans. (Title I SW Elements: 2.5) (Target Group: All) (Strategic Priorities: 2,4) (ESF: 5,5.1,5.2)	Assistant Principal(s), Principal, Teachers	August 2024-May 2025	(F)Title I, (O)Local Districts	Criteria: Lesson plans; Data from T-TESS walkthroughs/observations and instructional rounds; Completed curriculum and instruction PLC agendas and sign-in sheets; Data

C G SIVELLS EL

Goal 1. Sivells Elementary will increase student academic achievement by at least 3% annually.

Objective 2. The percentage of Kindergarten and 1st Grade students that meet grade level or above on the mClass Math Assessment will increase by 3%, as evidenced by growth from the BOY to EOY assessment.

Activity/Strategy	Person(s) Responsible	Timeline	Resources	Evaluation
				from diagnostic screeners
6. Teacher will attend daily PLCs to plan curriculum and instruction collaboratively. Teachers will receive professional development and evaluate student data. (Title I SW Elements: 2.5) (Target Group: All) (Strategic Priorities: 2,4) (ESF: 5,5.1,5.2,5.3,5.4)	Assistant Principal(s), Principal, Teachers	August 2024-May 2025	(F)Title I, (O)Local Districts	Criteria: Data from T-TESS walkthroughs-observations and instructional rounds; completed curriculum and instruction PLCs, agendas, and sign-in sheets; diagnostic and unit assessment data; SES Student Data Growth MTSS chart
7. Kindergarten and 1st-grade teachers will utilize HQIM Math curriculum (Eureka) strategies to improve student math skills. (Title I SW Elements: 2.5) (Target Group: All) (Strategic Priorities: 2,4) (ESF: 5,5.1,5.2,5.3,5.4)	Assistant Principal(s), Principal, Teachers	August 2024-May 2025	(O)Local Districts, (S)Local Funds	Criteria: T-TESS walkthroughs, observations, and instructional rounds, completed curriculum and instruction, PLC agendas and sign-in sheets, unit assessment data; SES Student Data Growth MTSS chart

C G SIVELLS EL

Goal 1. Sivells Elementary will increase student academic achievement by at least 3% annually.

Objective 3. The percentage of PK4 students that meet grade level on the CLI Engage Assessment will increase by 3%, as evidenced by growth on the School Benchmark Growth Report for Rapid Letter Naming and Overall Phonological Awareness.

Activity/Strategy	Person(s) Responsible	Timeline	Resources	Evaluation
1. Implement the Fundamental 5 lesson plan template for instructional planning. (Title I SW Elements: 2.5) (Target Group: All) (Strategic Priorities: 2,4) (ESF: 4.1)	Assistant Principal, Principal, Teacher(s)	August 2024-May 2025	(F)Title I, (O)Local Districts	Criteria: Data from T-TESS walkthroughs/observations and instructional rounds; Completed curriculum and instruction PLC agendas and sign-in sheets; Admin. weekly check of lesson plans
2. The campus will align TEKS Resource System components such as the scope and sequence, instructional focus documents, and unit maps to FrogStreet curriculum. (Title I SW Elements: 2.5) (Target Group: All) (Strategic Priorities: 2,4) (ESF: 4,4.1)	Assistant Principal, Principal, Teacher(s)	August 2024-May 2025	(F)Title IIA Principal and Teacher Improvement, (O)Local Districts, (S)Local Funds	Criteria: Data from T-TESS walkthroughs/observations and instructional rounds; Completed curriculum and instruction PLC agendas and sign-in sheets; Data from unit assessments; Admin. weekly check of lessons plans
3. PK-3 and PK-4 teachers will use the Frogstreet curriculum to plan RLA instruction and PK-4 will use Language for Learning to develop oral language skills. (Title I SW Elements: 2.5) (Target Group: PRE K) (Strategic Priorities: 2,4) (ESF: 4,4.1)	Assistant Principal, Principal, Teacher(s)	August 2024-May 2025	(F)Title I, (O)Local Districts	Criteria: Data from T-TESS walkthroughs/observations and instructional rounds; Completed curriculum and instruction PLC agenda and sign-in sheets; Admin. weekly check of lesson plans
4. Paraprofessionals will offer additional support to teachers and students in PK, K and 1st grade classrooms. (Title I SW Elements: 2.1,2.5) (Target Group: All,PRE K,K,1st) (Strategic Priorities: 2,4) (ESF: 5,5.1)	Assistant Principal(s), Principal, Teacher(s)	August 2024-May 2025		Criteria: Instructional rounds/walkthroughs; Observations of small group instruction

C G SIVELLS EL

Goal 1. Sivells Elementary will increase student academic achievement by at least 3% annually.

Objective 4. The percentage of PK4 students that meet grade level on the CLI Engage Assessment will increase by 3%, as evidenced by growth on the School Benchmark Growth Report for Math Overall Measure.

Activity/Strategy	Person(s) Responsible	Timeline	Resources	Evaluation
1. Implement the Fundamental 5 lesson plan template for instructional planning. (Title I SW Elements: 2.5) (Target Group: All) (Strategic Priorities: 2,4) (ESF: 4,4.1,5,5.1)	Assistant Principal(s), Principal, Teacher(s)	August 2024-May 2025		Criteria: Admin. weekly check of lesson plans
2. Utilize CLI to assess and screen PK4 students in Math at the BOY, MOY, and EOY. (Title I SW Elements: 2.5) (Target Group: PRE K,K,1st) (Strategic Priorities: 2) (ESF: 4,4.1)	Assistant Principal(s), Principal, Teachers	August 2024-May 2025	(O)Local Districts, (S)Local Funds	Criteria: CLI Data reports
3. Paraprofessionals will offer additional instructional supports to teachers and students in PK, K and 1st grade classrooms. (Title I SW Elements: 2.1,2.5) (Target Group: All) (Strategic Priorities: 2,4) (ESF: 5,5.1)	Assistant Principal(s), Principal, Teacher(s)	August 2024-May 2025		Criteria: Instructional rounds/walkthroughs; Observations of small-group instruction
4. The campus will align TEKS Resource System components such as the scope and sequence, instructional focus documents, and unit maps to FrogStreet curriculum. (Title I SW Elements: 2.5) (Target Group: All) (Strategic Priorities: 2,4) (ESF: 4,4.1,5,5.1)	Assistant Principal(s), Principal, Teacher(s)	August 2024-May 2025		Criteria: Unit maps, scope and sequence lesson plans

C G SIVELLS EL

Goal 2. Sivells Elementary will recruit, develop, and retain high-quality educators, as evidenced by an overall decrease in the teacher turnover rate to less than 20%.

Objective 1. Sivells will increase its teacher retention percentage by 3%.

Activity/Strategy	Person(s) Responsible	Timeline	Resources	Evaluation
1. Sivells administrators will work closely with the district curriculum and instruction team to prepare purposeful professional development for all staff. (Title I SW Elements: 2.4,2.5) (Target Group: All) (Strategic Priorities: 1,2,4) (ESF: 2,2.1,5,5.2)	Assistant Principal(s), Assistant Superintendent of C & I, Principal	August 2024-May 2025	(F)Title I, (O)Local Districts	Criteria: Professional Development Calendars, Agendas, and Minutes
2. Sivells first-year teachers will be assigned a mentor on campus to assist with mentoring teachers new to the district and/or profession. (Target Group: All) (Strategic Priorities: 1) (ESF: 2,2.1)	Assistant Principal(s), Mentor Teachers, Principal, Response to Intervention Teachers, Teachers	August 2024-May 2025		Criteria: Mentor/Mentee Training Mentor Observation Logs Mentor/Mentee Meeting Agendas and Minutes
3. Sivells administrators will provide PLC experiences that improve overall teaching effectiveness; leading teachers to ultimately facilitate PLC experiences. (Title I SW Elements: 2.5) (Target Group: All) (Strategic Priorities: 1,4) (ESF: 1,1.1,1.2,2,2.1)	Assistant Principal, Lead Teacher, Principal, Response to Intervention Teachers, Special Ed Teachers, Teachers	August 2024-May 2025		Criteria: PLC Agendas/Minutes Improved planning and classroom instruction implementation following PLCs

C G SIVELLS EL

- Goal 3.** Sivells Elementary will foster a positive and safe learning environment through the maintenance of campus facilities that meet annual safety standards and a 3% increase in staff morale, as evidenced by the BOY to EOY Staff Culture & Climate Survey results.
- Objective 1.** Sivells will increase collaboration among instructional leaders with clear roles and responsibilities.

Activity/Strategy	Person(s) Responsible	Timeline	Resources	Evaluation
1. The Sivells Leadership Team will meet together weekly for collaboration and planning. (Title I SW Elements: 1.1) (Target Group: All) (Strategic Priorities: 1,4) (ESF: 1,1.1)	Assistant Principal(s), Counselor, Principal	August 2024-May 2025	(F)Title I	Criteria: Weekly Meeting Agendas and Sign-In Sheets
2. Sivells Leadership Team maintains effective communication with staff. (Title I SW Elements: 1.1) (Target Group: All) (Strategic Priorities: 1) (ESF: 1,1.1,3,3.1)	Assistant Principal, Counselor, Principal	August 2024-May 2025	(O)Local Districts	Criteria: Daily announcement agenda; Weekly Newsletter; Monthly staff meeting agendas and PLC sign-in sheets
3. Campus administrators will develop campus committees responsible for creating a minimum of 2 morale-boosting events per month to show appreciation for staff members. (Title I SW Elements: 1.1,2.1) (Target Group: All) (Strategic Priorities: 1,4) (ESF: 2,2.1,3)	Assistant Principal(s), Principal, Teacher(s)	August 2024-May 2025		Criteria: Committee meeting/agendas and sign-in sheets

C G SIVELLS EL

- Goal 3.** Sivells Elementary will foster a positive and safe learning environment through the maintenance of campus facilities that meet annual safety standards and a 3% increase in staff morale, as evidenced by the BOY to EOY Staff Culture & Climate Survey results.
- Objective 2.** Promote safety and the social and emotional well-being of students and staff.

Activity/Strategy	Person(s) Responsible	Timeline	Resources	Evaluation
1. Follow the campus-wide safety plan to protect all students and staff. (Title I SW Elements: 1.1) (Target Group: All) (Strategic Priorities: 4) (ESF: 3,3.2,3.3)	Assistant Principal, Counselor, Principal, SRO Officer, Teacher(s)	August 2024-May 2025	(O)Local Districts	Criteria: Monthly safety drills; documentation from Security Department; Campus SRO logs
2. Document and maintain daily building checks (locked and secured doors and facilities). (Title I SW Elements: 1.1) (Target Group: All) (Strategic Priorities: 4) (ESF: 3,3.2,3.3)	Assistant Principal(s), Principal, SRO Officer	August 2024-May 2025		Criteria: SRO's Building check log
3. Integrate weekly social-emotional classroom lessons and PAWs behavioral support through weekly specials rotation. (Title I SW Elements: 1.1) (Target Group: All) (ESF: 3,3.2)	Counselor, Teacher(s)	August 2024-May 2025	(O)Local Districts	Criteria: Weekly counselor report; Student office referral data; Counselor's Classroom Guidance Schedule
4. Partner with the Community in Schools coordinator and community members to promote positive relationships that support our students, families, and staff. (Title I SW Elements: 1.1,2.1) (Target Group: All) (ESF: 3,3.4)	Assistant Principal, Counselor(s), Principal, Teacher(s)	August 2024-May 2025		Criteria: Community in Schools documentation - Monthly Newsletter HEB Buddy League Documentation Volunteer partnership documentation (GCF, Rescue Church, BACODA, Food Banks)
5. 1st-grade students will participate in the HEB Buddy League (anti-bullying) program. (Title I SW Elements: 2.1) (Target Group: 1st) (Strategic Priorities: 4) (ESF: 3,3.1,3.4)	Assistant Principal, Counselor(s), Principal, Teacher(s)	October 2024-October 2024	(O)Local Districts	Criteria: Community in Schools documentation; Decreased discipline referrals

C G SIVELLS EL

- Goal 3.** Sivells Elementary will foster a positive and safe learning environment through the maintenance of campus facilities that meet annual safety standards and a 3% increase in staff morale, as evidenced by the BOY to EOY Staff Culture & Climate Survey results.
- Objective 3.** Sivells will utilize consistent communication, engage families and foster community partnerships to build a positive campus culture.

Activity/Strategy	Person(s) Responsible	Timeline	Resources	Evaluation
1. Use Second Step (Social Emotional Curriculum) to continue to foster students' emotional intelligence, empathy and problem solving skills. (Title I SW Elements: 2.1,2.3,3.1) (Target Group: All) (Strategic Priorities: 4) (ESF: 3,3.3)	Assistant Principal(s), Principal, Teachers	August 2024-May 2025		Criteria: Lesson Plans; Counselor's Classroom Guidance Schedule
2. Maintain a positive school climate and strong community that builds character, embraces, and celebrates diversity. (Title I SW Elements: 2.1,2.2,2.3,2.4) (Target Group: All,PRE K,K,1st) (Strategic Priorities: 4) (ESF: 3,3.1,3.2,3.3)	Assistant Principal(s), Lead Teacher, Parent Volunteers, Principal, Teachers	August 2024-May 2025		Criteria: Cultural celebrations, PAWs campus behavior visuals, Counselor daily mindset messages, SEL Curriculum, Wharton WOW staff appreciation
3. Promote student-centered activities through community partnerships to equip our Sivells families with educational events and programs. (Title I SW Elements: 2.1,3.1) (Target Group: All) (Strategic Priorities: 4) (ESF: 3,3.1,3.4)	Assistant Principal(s), Principal, Teachers	August 2024-May 2025		Criteria: Girl/Boy Scouts sign up nights, Boys and Girls Club sign up nights, Community in Schools events, WIC information
4. Sivells PTA will provide support for students and teachers throughout the school year. (Title I SW Elements: 2.1) (Target Group: All) (Strategic Priorities: 1,4) (ESF: 3,3.4)	Assistant Principal(s), Parent Volunteers, Principal, Teacher(s)	August 2024-May 2025		Criteria: PTA events, meeting agenda/notes
5. Sivells will partner with community stakeholders to provide teachers with appreciation and ongoing support. (Title I SW Elements: 2.1) (Target Group: All) (Strategic Priorities: 1,4) (ESF: 3,3.4)	Assistant Principal(s), Parent Volunteers, Principal, Teacher(s)	August 2024-May 2025		Criteria: Teacher Appreciation donors/donations
6. Sivells will provide multiple opportunities for families to enjoy reading together while promoting good reading strategies (Reading Picnic, Saturday Reading Adventures, Family Reading Night). (Title I SW Elements: 2.1,3.1) (Target Group: All) (Strategic Priorities: 4) (ESF: 3,3.4)	Assistant Principal(s), Counselor(s), Principal, Teacher(s)	August 2025-May 2025		Criteria: Family Event Attendance sheets

Comprehensive Needs Assessment