

Parent Welcome and Orientation

Middle School Grades 5 – 8



Invested in students. Intentional in outcome.

Agenda

Welcome with Nancy Gilchrist, Admissions Associate

Session Overview with Karen Blankenbeckler, Vice President for Academic Affairs

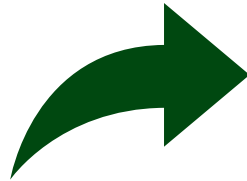
Division Summary with Jenn McDonough, Middle School Division Head

Academics with Jenn McDonough, Middle School Division Head

Student Life with Daniel Bates, Middle School Dean of Students

Q&A

Admissions



Academics

Parent Mentors



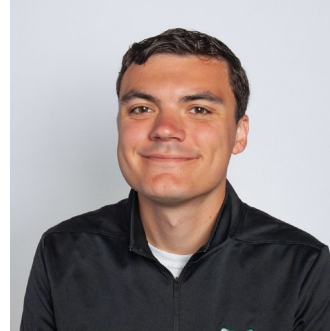
Middle School Team



Jenn McDonough
Middle School
Division Head



Daniel Bates
Middle School
Dean of Students



Nathan Campbell
Middle School
Athletics Director



Kelsey Bolton
Middle School
Counselor



Suzanne Grant
Middle School
Division Assistant

Division Summary

Grades 5 – 8

Academics

Student Life

Uniforms

Sports

Grades 6 – 8

2025 – 2026 School Calendar

Middle School

- Uniquely formative years as students are developing physically, emotionally, socially, and spiritually
- Students are curious, open, adventurous, vulnerable, and often unpredictable
- Each student's progress will vary, as each student is growing and developing at his or her own rate



Why do we do what we do?

- Moving from Grammar to Dialectic
 - Academic Curriculum
 - Executive Function Skills
 - Social/Emotional Behavior
 - Greater Independence
- Adaptive Program and Teachers
 - Students' progress will vary
 - One size does not fit all
 - Students will grow leaps and bounds



Parent Role/Partnership

- Parents “*get*” to transition also
 - Hand-hold **or** Space
 - Conductor **or** Coach
- Take cues from child(ren)
- Parent partnership can work together to adapt to evolving needs



Student Role and Expectations

- Independence and Accountability
- Self-Advocacy and Self-Initiation
- Behavioral Growth and Social Maturity



Grades 5 and 6 Block Schedule

Students will have:

A homeroom teacher, as well as:

- **Subject experts in:**

- Reading/Writing
- Science and Geography (5) or History (6)
- Math

- **Student Life block each week:**

- Organization and planning
- Developing executive functioning skills
- Rooted – our character development program

- **Daily recess**

| Week 1 | | | | | |
|----------|-----------------------------|-------------|------------|--------------|-------|
| Monday A | Tuesday B | Wednesday C | Thursday A | Friday B | |
| Homeroom | Homeroom | | Homeroom | Homeroom | 8:00 |
| Music | Art or Library ¹ | Late Start | Band | Office Hours | 8:05 |
| | | | | | 8:10 |
| | | | | | 8:15 |
| | | | | | 8:20 |
| | | | | | 8:25 |
| | | | | | 8:30 |
| | | | | | 8:35 |
| | | | | | 8:40 |
| | | | | | 8:45 |
| | | | | | 8:50 |
| | | | | | 8:55 |
| | | | | | 9:00 |
| | | | | | 9:05 |
| | | | | | 9:10 |
| PASSING | PASSING | HOMEROOM | PASSING | PASSING | 9:15 |
| P.E. | | Chapel | P.E. | | 9:20 |
| | | | | | 9:25 |
| | | | | | 9:30 |
| | | | | | 9:35 |
| | | | | | 9:40 |
| | | | | | 9:45 |
| | | | | | 9:50 |
| | | | | | 9:55 |
| | | | | | 10:00 |
| | | | | | 10:05 |
| | | | | | 10:10 |
| | | | | | 10:15 |
| | | | | | 10:20 |
| | | | | | 10:25 |
| | | | | | 10:30 |
| | | | | | 10:35 |
| | | | | | 10:40 |
| | | | | | 10:45 |
| | | | | | 10:50 |
| | | | | | 10:55 |
| | | | | | 11:00 |
| | | | | | 11:05 |
| | | | | | 11:10 |
| | | | | | 11:15 |
| | | | | | 11:20 |
| | | | | | 11:25 |
| | | | | | 11:30 |
| | | | | | 11:35 |
| | | | | | 11:40 |
| | | | | | 11:45 |
| | | | | | 11:50 |
| | | | | | 11:55 |
| | | | | | 12:00 |
| | | | | | 12:05 |
| | | | | | 12:10 |
| | | | | | 12:15 |
| | | | | | 12:20 |
| | | | | | 12:25 |
| | | | | | 12:30 |
| | | | | | 12:35 |
| | | | | | 12:40 |
| | | | | | 12:45 |
| | | | | | 12:50 |
| | | | | | 12:55 |
| | | | | | 1:00 |
| | | | | | 1:05 |
| | | | | | 1:10 |
| | | | | | 1:15 |
| | | | | | 1:20 |
| | | | | | 1:25 |
| | | | | | 1:30 |
| | | | | | 1:35 |
| | | | | | 1:40 |
| | | | | | 1:45 |
| | | | | | 1:50 |
| | | | | | 1:55 |
| | | | | | 2:00 |
| | | | | | 2:05 |
| | | | | | 2:10 |
| | | | | | 2:15 |
| | | | | | 2:20 |
| | | | | | 2:25 |
| | | | | | 2:30 |
| | | | | | 2:35 |
| | | | | | 2:40 |
| | | | | | 2:45 |

Note: individual student schedules will be posted 1 week prior to the start of school.

Grades 5 and 6 Specialist Classes

*Note: All grade 5 students participate in both band and general music, which are taught by specialists and meet once each week. Grade 6 students may choose either band or choir and attend twice each week.



Art



Band/Choir*



Latin



Lab Science



Library



Physical Education



Computer Programming (1 semester)



Public Speaking (1 semester)

Grades 7 and 8 Block Schedule

Students will have:

A homeroom teacher, as well as:

- **6 required class teachers:**
 - Math
 - History
 - English
 - Science
 - Latin (and Logic in grade 7)
 - Christian studies
- **Student Life block each week:**
 - Organization and planning
 - Developing executive functioning skills
 - Rooted – our character development program
- **Daily breaks**

| Week 1 | | | | | |
|--------------------------|--------------------------|--------------|--------------------------|--------------------------|-------|
| Monday A | Tuesday B | Wednesday C | Thursday A | Friday B | |
| Homeroom | Homeroom | | Homeroom | Homeroom | 8:00 |
| Block 1 | Block 5 | Late Start | Block 1 | Block 5 | 8:05 |
| PASSING | PASSING | HOMEROOM | PASSING | PASSING | 8:10 |
| Block 2 | Block 6 | Chapel | Block 2 | Block 6 | 8:15 |
| Break | Break | Student Life | Block 2 | Block 6 | 8:20 |
| Arts or Elective Block A | Arts or Elective Block A | Block 3 | Arts or Elective Block A | Arts or Elective Block A | 8:25 |
| PASSING | PASSING | PASSING | PASSING | PASSING | 8:30 |
| Arts or Elective Block B | Arts or Elective Block B | Block 4 | Arts or Elective Block B | Arts or Elective Block B | 8:35 |
| Lunch | Lunch | Lunch | Lunch | Lunch | 8:40 |
| Office Hours | Office Hours | Lunch | Office Hours | Office Hours | 8:45 |
| Block 3 | Block 1 | Block 5 | Block 3 | Block 1 | 8:50 |
| PASSING | PASSING | PASSING | PASSING | PASSING | 8:55 |
| Block 4 | Block 2 | Block 6 | Block 4 | Block 2 | 9:00 |
| | | | | | 9:05 |
| | | | | | 9:10 |
| | | | | | 9:15 |
| | | | | | 9:20 |
| | | | | | 9:25 |
| | | | | | 9:30 |
| | | | | | 9:35 |
| | | | | | 9:40 |
| | | | | | 9:45 |
| | | | | | 9:50 |
| | | | | | 9:55 |
| | | | | | 10:00 |
| | | | | | 10:05 |
| | | | | | 10:10 |
| | | | | | 10:15 |
| | | | | | 10:20 |
| | | | | | 10:25 |
| | | | | | 10:30 |
| | | | | | 10:35 |
| | | | | | 10:40 |
| | | | | | 10:45 |
| | | | | | 10:50 |
| | | | | | 10:55 |
| | | | | | 11:00 |
| | | | | | 11:05 |
| | | | | | 11:10 |
| | | | | | 11:15 |
| | | | | | 11:20 |
| | | | | | 11:25 |
| | | | | | 11:30 |
| | | | | | 11:35 |
| | | | | | 11:40 |
| | | | | | 11:45 |
| | | | | | 11:50 |
| | | | | | 11:55 |
| | | | | | 12:00 |
| | | | | | 12:05 |
| | | | | | 12:10 |
| | | | | | 12:15 |
| | | | | | 12:20 |
| | | | | | 12:25 |
| | | | | | 12:30 |
| | | | | | 12:35 |
| | | | | | 12:40 |
| | | | | | 12:45 |
| | | | | | 12:50 |
| | | | | | 12:55 |
| | | | | | 1:00 |
| | | | | | 1:05 |
| | | | | | 1:10 |
| | | | | | 1:15 |
| | | | | | 1:20 |
| | | | | | 1:25 |
| | | | | | 1:30 |
| | | | | | 1:35 |
| | | | | | 1:40 |
| | | | | | 1:45 |
| | | | | | 1:50 |
| | | | | | 1:55 |
| | | | | | 2:00 |
| | | | | | 2:05 |
| | | | | | 2:10 |
| | | | | | 2:15 |
| | | | | | 2:20 |
| | | | | | 2:25 |
| | | | | | 2:30 |
| | | | | | 2:35 |
| | | | | | 2:40 |
| | | | | | 2:45 |

Grades 7 and 8 Fine Arts and Elective Classes

- Art*
- Band*
- Choir*
- Drama*
- Rhetoric
- Computer Programming
- Creation Lab
- Creative Writing Lab
- Digital Storytelling
- Strength Training
- Robotics
- Guided Study Hall
(only with permission)

** At least one elective each year must be an Arts elective*

In June, fall semester class enrollments will be posted on the Parent Portal.

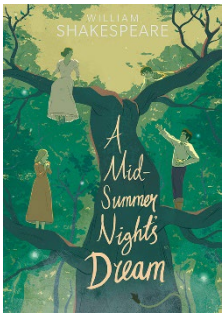


Invested in students. Intentional in outcome.

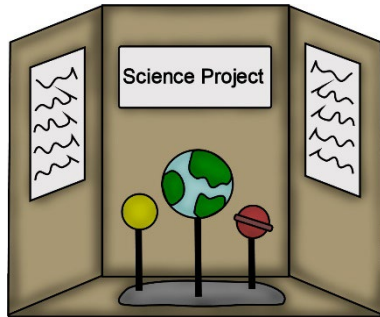
Immersion Weeks + JanTerm

During the first two weeks of January, students in grade 5 immerse themselves in science while students in grade 6 are engrossed in Shakespeare. These culminate with two wonderful events.

**January 21 and 22
Grade 6 Performance**



**February 12
Grade 5 Science Fair**



Students in grades 7 – 12 participate in JanTerm, first 2 weeks of January with free dress throughout.

Students choose from special seminar classes that give them exposure to a wide variety of subjects.

E.g., knitting, engineering, C.S. Lewis, flag football, photography, finances

More details are sent home in the October timeframe for what and how to choose options.

An experience our students look forward to each year

Executive Function

- Students in grades 5 – 8 participate in weekly office hours.
 - Grades 5 and 6 more prescribed and structured
 - Grades 7 and 8 will include more choice and autonomy
- Office Hours are led by our Middle School Advisors and Homeroom teachers and provide a dedicated time for students to get organized, plan their week, study, and meet with teachers.
- Executive function targets:
 - Organizing time and materials
 - Self-advocacy
 - Test taking skills
 - Note taking skills
 - Digital citizenship

Field Trips



Grade 5:

- Camp Gilead Service Day
- Orienteering and Map Reading
- Edgeworks Climbing Gym
- Outdoor Ed

Grade 6:

- Camp Gilead Service Day
- Point Defiance Zoo and Aquarium
- Nature Hike

Grade 7:

- SAMBICA Service Day
- Seattle Aquarium
- Nordic Museum

Grade 8:

- High Trek
- Fort Nisqually Museum

Middle School Academic Teams

Several after school academic team opportunities offered* across three seasons.

| FALL (Sep 22 – Dec 1) | WINTER (Jan 20 – Mar 30) | SPRING (Apr 13 – Jun 1) |
|---|--|--|
| Chess Creative Writing Math National History Day Robotics | Chess Coding Creative Writing Math Memory Robotics Science | Coding Game Design Memory Science |

**Offerings subject to change.*

Middle School academic teams are designed for students who are eager to learn more about these academic subjects beyond the regular school day. Students are expected to be keenly interested and have some level of enthusiasm or experience in the subject area. Students will be held accountable for fully participating in the after-school content for the duration of the season. *Please register only if your child meets these criteria.* We have limited spots available and would like to prioritize those students who are ready to engage with these after-school opportunities.



Invested in students. Intentional in outcome.

Family Handbook

Attendance Policy: (all of grades 5 thru 8)

- An absence is recorded if a student is more than 15-minutes late for a class period.
- If a student accumulates **15** absences in a semester or **20** absences in a school year, a family will need to petition for credit.
- Accommodations for extended illness-related absences.

Late Work Policy:

- Late assignments are docked **10%** each day, up to **50%** off. No late work will be accepted after the specified late work deadline dates as noted on the school calendar.

Student Life Goals

- **Faith:** Nurture student growth in theological understanding (Orthodoxy) and practice (Orthopraxy)
- **Virtue:** Help students grow in wisdom, compassion and courage.
- **Leadership:** Develop leadership skills and provide opportunities for student voice and service.
- **Culture:** Foster a respectful, supportive, and fun student community.



Student Life Outcomes



WISDOM



COMPASSION



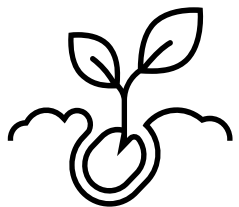
COURAGE

Teach

Practice

Apply

Mentorship Through Homeroom, Advisory Programs, Gold Groups, in and out of Student Life



Grade 5 & 6

Rooted

Service
Projects

Organization

Self Advocacy

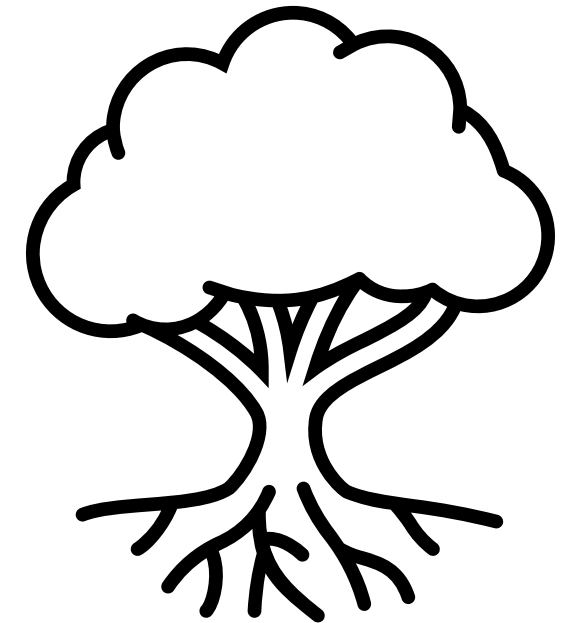
Grade 7 & 8

Rooted

Service
Projects

Student
Leadership

Clubs



Socials

Provide opportunities for community building and development of deeper relationships in safe and nurturing environments beyond the classroom.

Here are a few examples, plans will be finalized at the start of the year:

- September 5 – Icebreaker (5 – 8)
- October 3 – Family Game Night (5 & 6)
- November 14 – Clue Night (7 & 8)
- March 13 – Movie Night (5 & 6)
- March 27 – Movie Night (7 & 8)
- April 24 – Neon Night (5 – 8)
- May 27 – Field Day + Grizzly Color Run (5 – 8)

All dates subject to change.

Please check the School Calendar (tbcs.org/calendar) and the weekly publication of *The Bear Facts*.

Uniforms

Foster a supportive and consistent environment where everyone feels valued and part of the community and ensure our students are dressing for success

Weekly Schedule (all grades 5 – 8):

- Tuesdays and Wednesdays are **formal dress** uniform days
- Mondays, Thursdays, and Fridays are **casual** uniform days
- Special dress days throughout the year – noted on school calendar

P.E. Uniforms:

- Optional for grades 5 – 6
- **Required** for grades 7 – 8



MIDDLE SCHOOL UNIFORM GUIDE

GIRLS dress

 +  + 
LANDS' END OR TOMMY HILFIGER NAVY OR KHAKI UNIFORM PANTS, SKIRT, OR SKORT
NAVY, WHITE, OR GREEN POLO WITH OR WITHOUT LOGO
LANDS' END OR TOMMY HILFIGER NAVY OR GREEN SWEATER OR SWEATER VEST


NAVY LOGO FLEECE OPTIONAL

GIRLS casual

 +  + 
NAVY OR KHAKI UNIFORM-STYLE PANTS OR SHORTS OR NAVY, KHAKI, OR CHRISTOPHER PLAID SKIRT OR SKORT
NAVY, WHITE, OR GREEN POLO WITH OR WITHOUT LOGO
LANDS' END OR TOMMY HILFIGER NAVY OR GREEN SWEATER OR SWEATER VEST OR SCHOOL-BRANDED, SCHOOL TEAM, OR BEAR CREEK LOGO SWEATSHIRT OPTIONAL

See the complete uniform guidelines in the Family Handbook. Allowed vendors linked on tbc.org/mybc/parents/school-uniforms. Students may also wear items previously purchased from DENNIS Uniform.



MIDDLE SCHOOL UNIFORM GUIDE

 +  + 
NAVY, WHITE, OR GREEN POLO WITH OR WITHOUT LOGO OR BLUE OR WHITE OXFORD
LANDS' END OR TOMMY HILFIGER NAVY OR GREEN SWEATER OR SWEATER VEST
NAVY LOGO FLEECE OPTIONAL

Boys casual

 + 
LANDS' END OR TOMMY HILFIGER NAVY OR GREEN SWEATER OR SWEATER VEST OR SCHOOL-BRANDED, SCHOOL TEAM, OR BEAR CREEK LOGO SWEATSHIRT
NAVY BLUE OR KHAKI UNIFORM-STYLE PANTS OR SHORTS

Boys dress

 +  + 
LANDS' END OR TOMMY HILFIGER NAVY BLUE OR GREEN SWEATER OR SWEATER VEST
NAVY, WHITE, OR GREEN POLO WITH OR WITHOUT LOGO OR BLUE OR WHITE OXFORD
LANDS' END OR TOMMY HILFIGER NAVY OR KHAKI UNIFORM PANTS

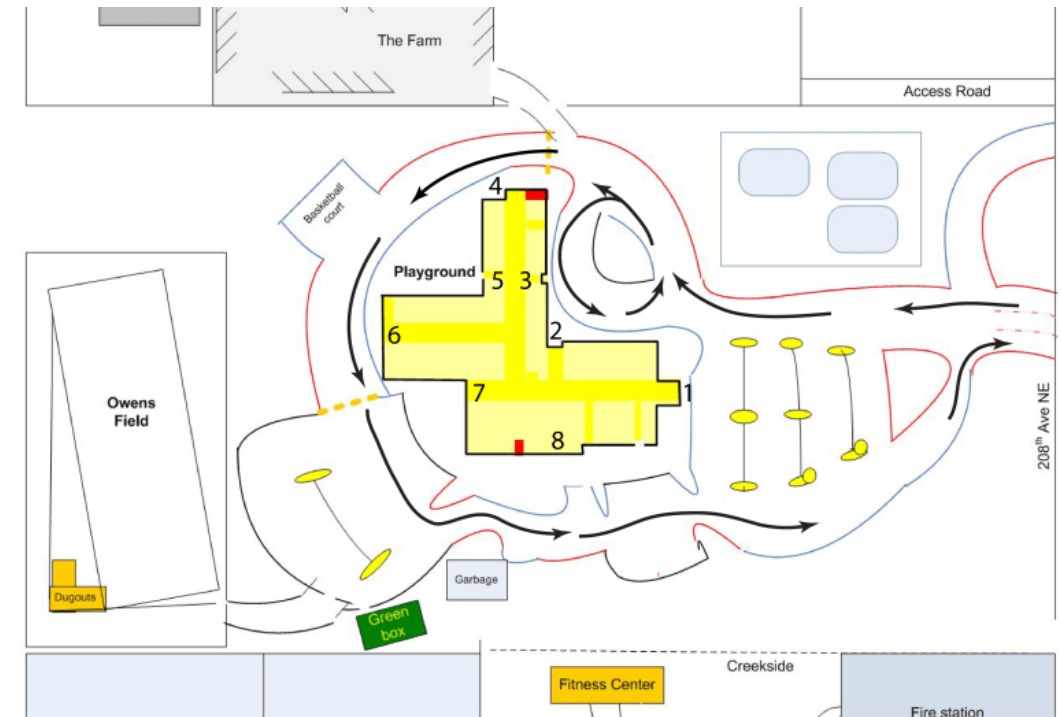

NAVY LOGO FLEECE OPTIONAL

See the complete uniform guidelines in the Family Handbook. Allowed vendors linked on tbc.org/mybc/parents/school-uniforms. Students may also wear items previously purchased from DENNIS Uniform.

Grades 5 – 8 Drop-off and Pick-up

Please display your child's **green** color-coded family name card on your dashboard and use the designated drop-off location.

| Drop-off Time | Drop-off Location |
|---------------------------------------|--|
| 7:40 a.m. – 8:00 a.m. M, Tu, Th, F | Parents drop off along the south side of the building (see blue arrow on map). Please pull car as far forward as possible toward the front of the building (X). Students exit the car on the left side and enter through either the main hallway door by the gym (7) or at rear of the Main Commons (8). |
| 8:40 a.m. – 9:00 a.m. W | |
| Pick-up Time | Pick-up Location |
| 2:45 p.m. – 3:05 p.m. | Parents pull car up to the Main Commons door (8). Students exit through that door (under awning if raining). |



Counseling Resources



Kelsey Bolton

K – 8 School Counselor



Marissa Krauskopf

Upper School Counselor

- Parent partnership
- How does the school counselor support students?
 - Social, emotional, and academic support
- Communication – how can students and parents reach out?
- Online resources on counseling page

Middle School Athletics (Grades 6 – 8)



Commitment – Embracing teamwork and learning to be a valuable team member

Growth – Developing skills and becoming the individual God intends

Fun – Fostering a love for the game and encouraging students to continue playing

Middle School Sports Teams

| Fall* | Winter | Spring |
|--|--|---|
| <ul style="list-style-type: none">• Boys Soccer• Girls Soccer• Volleyball• Boys and Girls Cross Country <p>* Register June 2 – August 1</p> | <ul style="list-style-type: none">• Boys Basketball• Girls Basketball | <ul style="list-style-type: none">• Boys and Girls Track & Field• Baseball• Boys and Girls Golf <i>(7/8 Only)</i>• Boys and Girls Tennis <i>(7/8 Only)</i> |



2025 – 2026 YEARLY PLANNER

Revised 12/18/2024

Dates are subject to change.

Aug 27 First Day of School US
Aug 28 First Day of School MS

Sep 1 **No School** – Labor Day
Sep 2 First Day of School LS
Sep 8/9 First Day of School PS

Oct 16 – 17 **No School MS/US** – Parent/Teacher Conferences
Oct 17 **No School LS** – Teacher In-Service
Oct 20 **No School** – Teacher In-Service
Oct 31 **No School PS/LS** – Teacher In-Service

Nov 11 **No School** – Veterans Day
Nov 20 – 21 **No School PS/LS** – Parent/Teacher Conferences
Nov 26 – 28 **No School** – Thanksgiving Break

Dec 16 Early Dismissal US
Dec 17 Early Dismissal MS/US
Dec 18 Early Dismissal – Christmas Break
Dec 19 – Jan 2 **No School** – Christmas Break

Jan 5 School Resumes
Jan 9 **No School MS/US** – Teacher In-Service
Jan 16 **No School** – Teacher In-Service
Jan 19 **No School** – Martin Luther King, Jr. Day

Feb 16 – 20 **No School** – Mid-Winter Break

Mar 6 **No School PS/LS** – Teacher In-Service
Mar 16 – 17 **No School PS/LS/MS** – Parent/Teacher Conferences

Apr 3 **No School** – Good Friday
Apr 6 – 10 **No School** – Spring Break

May 25 **No School** – Memorial Day

Jun 4/5 Last Day of School PS
Jun 8 – 9 Early Dismissal MS/US
Jun 9 Last Day of School US
Jun 10 Early Dismissal LS/MS
Jun 10 Last Day of School LS/MS

- No School – All students
- No School – Some divisions – PS, LS, MS, or US see details
- Early Dismissal or combination – See details for division and specifics
- First Day of School – See details for specifics

| S | M | T | W | T | F | S |
|----|----|----|----|----|----|----|
| 24 | 25 | 26 | 27 | 28 | 29 | 30 |
| 31 | 1 | 2 | 3 | 4 | 5 | 6 |
| 7 | 8 | 9 | 10 | 11 | 12 | 13 |
| 14 | 15 | 16 | 17 | 18 | 19 | 20 |
| 21 | 22 | 23 | 24 | 25 | 26 | 27 |
| 28 | 29 | 30 | | | | |

| S | M | T | W | T | F | S |
|----|----|----|----|----|----|----|
| | | | | | | 1 |
| 2 | 3 | 4 | 5 | 6 | 7 | 8 |
| 9 | 10 | 11 | 12 | 13 | 14 | 15 |
| 16 | 17 | 18 | 19 | 20 | 21 | 22 |
| 23 | 24 | 25 | 26 | 27 | 28 | 29 |
| 30 | | | | | | |

| S | M | T | W | T | F | S |
|----|----|----|----|----|----|----|
| | | | | 1 | 2 | 3 |
| 4 | 5 | 6 | 7 | 8 | 9 | 10 |
| 11 | 12 | 13 | 14 | 15 | 16 | 17 |
| 18 | 19 | 20 | 21 | 22 | 23 | 24 |
| 25 | 26 | 27 | 28 | 29 | 30 | 31 |

| S | M | T | W | T | F | S |
|----|----|----|----|----|----|----|
| 1 | 2 | 3 | 4 | 5 | 6 | 7 |
| 8 | 9 | 10 | 11 | 12 | 13 | 14 |
| 15 | 16 | 17 | 18 | 19 | 20 | 21 |
| 22 | 23 | 24 | 25 | 26 | 27 | 28 |
| 29 | 30 | 31 | | | | |

| S | M | T | W | T | F | S |
|----|----|----|----|----|----|----|
| | | | | | 1 | 2 |
| 3 | 4 | 5 | 6 | 7 | 8 | 9 |
| 10 | 11 | 12 | 13 | 14 | 15 | 16 |
| 17 | 18 | 19 | 20 | 21 | 22 | 23 |
| 24 | 25 | 26 | 27 | 28 | 29 | 30 |
| 31 | | | | | | |

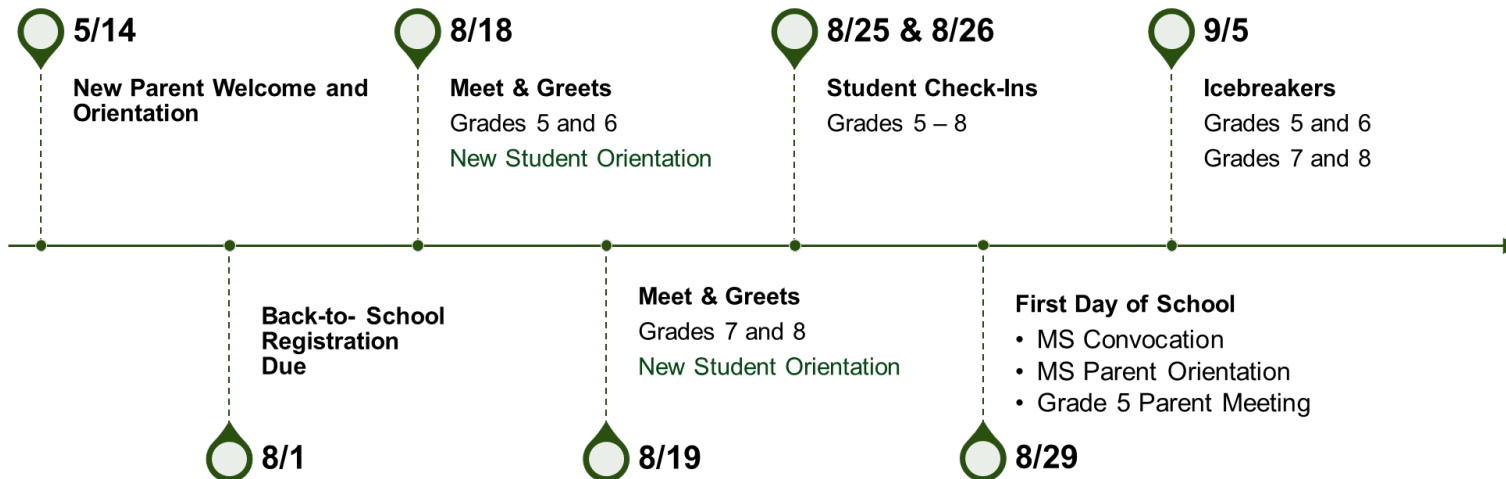
| S | M | T | W | T | F | S |
|----|----|----|----|----|----|----|
| | | | 1 | 2 | 3 | 4 |
| 5 | 6 | 7 | 8 | 9 | 10 | 11 |
| 12 | 13 | 14 | 15 | 16 | 17 | 18 |
| 19 | 20 | 21 | 22 | 23 | 24 | 25 |
| 26 | 27 | 28 | 29 | 30 | 31 | |

| S | M | T | W | T | F | S |
|----|----|----|----|----|----|----|
| | 1 | 2 | 3 | 4 | 5 | 6 |
| 7 | 8 | 9 | 10 | 11 | 12 | 13 |
| 14 | 15 | 16 | 17 | 18 | 19 | 20 |
| 21 | 22 | 23 | 24 | 25 | 26 | 27 |
| 28 | 29 | 30 | 31 | | | |

| S | M | T | W | T | F | S |
|----|----|----|----|----|----|----|
| 1 | 2 | 3 | 4 | 5 | 6 | 7 |
| 8 | 9 | 10 | 11 | 12 | 13 | 14 |
| 15 | 16 | 17 | 18 | 19 | 20 | 21 |
| 22 | 23 | 24 | 25 | 26 | 27 | 28 |

| S | M | T | W | T | F | S |
|----|----|----|----|----|----|----|
| | | | 1 | 2 | 3 | 4 |
| 5 | 6 | 7 | 8 | 9 | 10 | 11 |
| 12 | 13 | 14 | 15 | 16 | 17 | 18 |
| 19 | 20 | 21 | 22 | 23 | 24 | 25 |
| 26 | 27 | 28 | 29 | 30 | | |

| S | M | T | W | T | F | S |
|----|----|----|----|----|----|----|
| | 1 | 2 | 3 | 4 | 5 | 6 |
| 7 | 8 | 9 | 10 | 11 | 12 | 13 |
| 14 | 15 | 16 | 17 | 18 | 19 | 20 |
| 21 | 22 | 23 | 24 | 25 | 26 | 27 |
| 28 | 29 | 30 | | | | |



Middle School Key Dates

- September 4 – Inside Bear Creek
- September 18 – Middle School Curriculum Night
- September 23 – Individual Picture Day
- October 16 & 17 – Fall Parent/Teacher Conferences
- November 5 – Middle School Division Connection
- January 5 thru 15 – JanTerm/Immersion Weeks
- January 28 – Middle School Division Connection
- March 4 – Middle School Division Connection
- March 16 & 17 – Spring Parent/Teacher Conferences
- April 15 – Dads 'n Donuts
- May 6 – Mothers Tea

All dates subject to change.

Please check the School Calendar (tbcs.org/calendar) and the weekly publication of *The Bear Facts*.



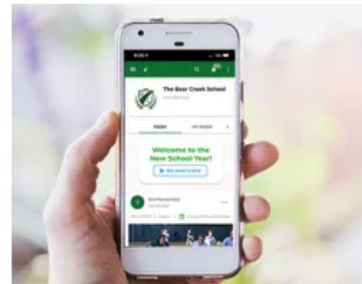
Invested in students. Intentional in outcome.

MyBC/Parents

www.tbcs.org/mybc/parents contains a wealth of information.

Use your Bear Creek username (usually firstname.lastname) and password to access:

- **New** Parent Portal (updating contact information, paying tuition)
- Summer Sports Camp Registration (grades 1 and up)
- Back-to-School Registration will be emailed in early June. At that time, new parents will receive access the Magnus Health portal through the New Parent Portal.



Password Protected

Parent Portal (also Admissions and New Parent Portals)

Magnus Health (Read login instructions.)

Photos, Videos, and Streaming

Library Book Holds

Family Handbook

Axis



Communications

Attendance

The Bear Facts

Microsoft Office 365

Archived Email Updates

Upper School Announcements

Senior Class

Emergency Notifications



Logistics

Class Lists

Daily Schedules

Drop-off/Pick-up

Food Services

Forms

Health Services

New Student Information

Parking

MyBC/Parents

All the information and links covered in this presentation are listed on your New Student Information page. Please visit this page often:

tbcs.org/mybc/parents/new-students/middle-school



[ABOUT US](#)

[ADMISSIONS](#)

[ACADEMICS](#)

[ATHLETICS](#)

[ARTS](#)

[COMMUNITY](#)

Middle School

This page contains information for new students in grades 5 – 8 and their parents. Please bookmark this page so you can follow up on all the information provided below as it is updated throughout the spring and summer.

WELCOME



Invested in students. Intentional in outcome.

Immunization Requirement

The Bear Creek School is required by State law to ensure all students are compliant with current immunization requirements or have an appropriate exemption. On or before the first day of attendance, **all new students** and all returning preschool, kindergarten, and **grade 7** students must **upload medically verified immunization records to the health portal** by the summer deadline. Children cannot attend school until these records are provided.

New parents will receive instructions for submitting immunization records in the health portal with Back-to-School Registration in June. We cannot accept any forms that have been mailed, emailed, or dropped off.

See your New Student Information page about how to obtain a medically verified copy of your child's immunization records.




Recommended: Reading List

Required: Math Packet

Recommended: Typing Courses

Optional: Journal/Thank You Notes

Optional: Creative Family Time

A photograph of a brick building with a clock tower, framed by autumn leaves. The building is made of red brick with grey stone accents around the arched entrance. A clock is visible on the tower. The foreground is filled with large, bright yellow and orange autumn leaves. The text "Q & A" is overlaid in green.

Q & A

