

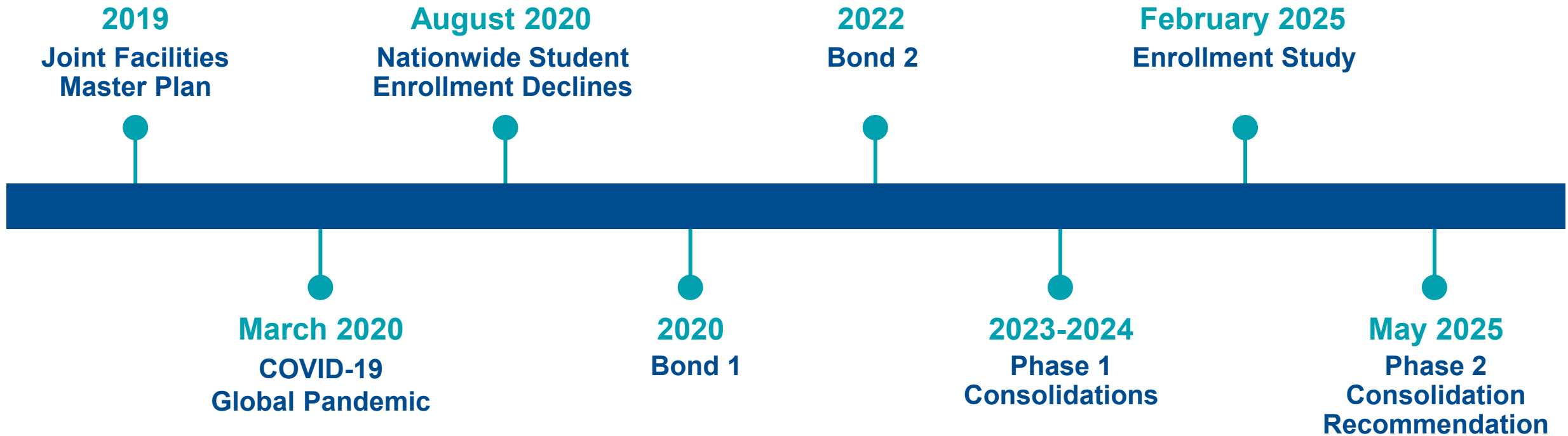
PHASE 2 MASTER PLAN CLOSURES & CONSOLIDATIONS

May 13, 2025 | Board of Education

WHITNEY OAKLEY, ED.D. | SUPERINTENDENT



Master Plan Timeline



Evaluation of School Facilities

Facilities Master Plan Findings



An **independent study** funded jointly by the commissioners and school board in 2019 found that district **schools were**, in some cases, **literally falling apart**.

The **study** rated more than **50% of our schools as being in poor or unsatisfactory condition** with outdated systems for heating and cooling, electrical and wiring, plumbing, technology and other critical infrastructure needs.

Closing 13 school buildings & 11 administrative buildings

| | | | | | |
|---|---|--|---|---|--|
| Brown Summit MS (Program Relocation) | Cone ES (Phase 3 Consolidation) | Doris Henderson Newcomers School (Program Relocation) | Erwin Montessori (Program Relocation; Site Sold) | Hampton ES (Consolidated; Site Sold) | Madison ES (Phase 2 Consolidation) |
| Murphey ES (Consolidated; Swing Space) | Oak Hill ES (Phase 3 Consolidation) | Peeler ES (Consolidated; VPA Site) | SCALE Greensboro/Twilight (SCALE Relocated to McIver; Site Sold) | Southern ES (Phase 2 Consolidation) | Sumner ES Now a Rebuild |
| Wiley ES (Consolidated; Swing Space) | Merritt Drive Annex (admin) | Prescott Street Tech Department (admin) | Lees Chapel (admin) | Franklin Blvd (admin) | Franklin Blvd/Moen Transportation (admin) |
| Eugene Street (admin) | Laughlin Professional Center (admin) | Psychological Services (Idol admin) | Market Street (admin) | Grimes Ave Warehouse (admin) | Naco Road maintenance (admin) |

*From 2019 Facilities Master Plan with updates thru April 2025

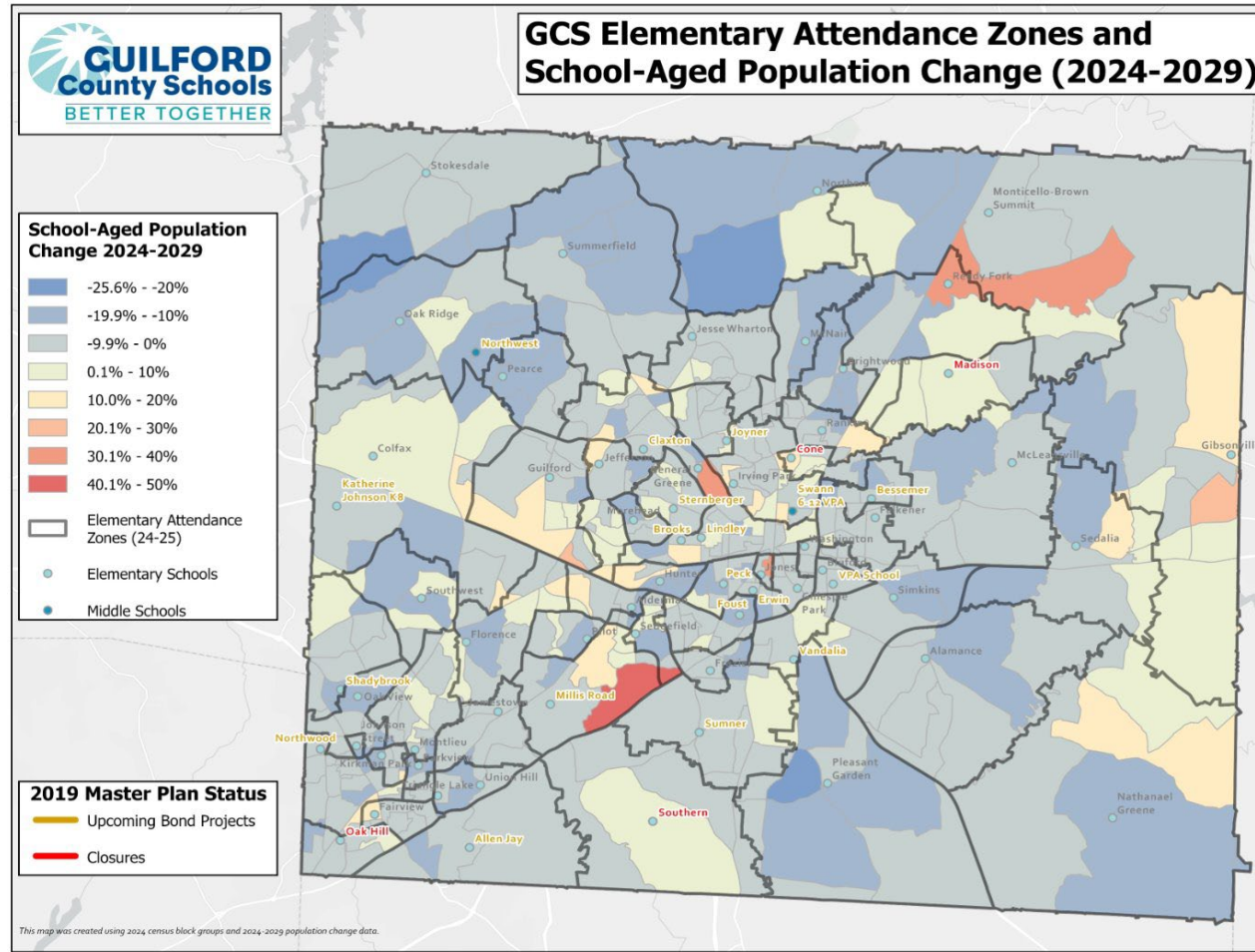
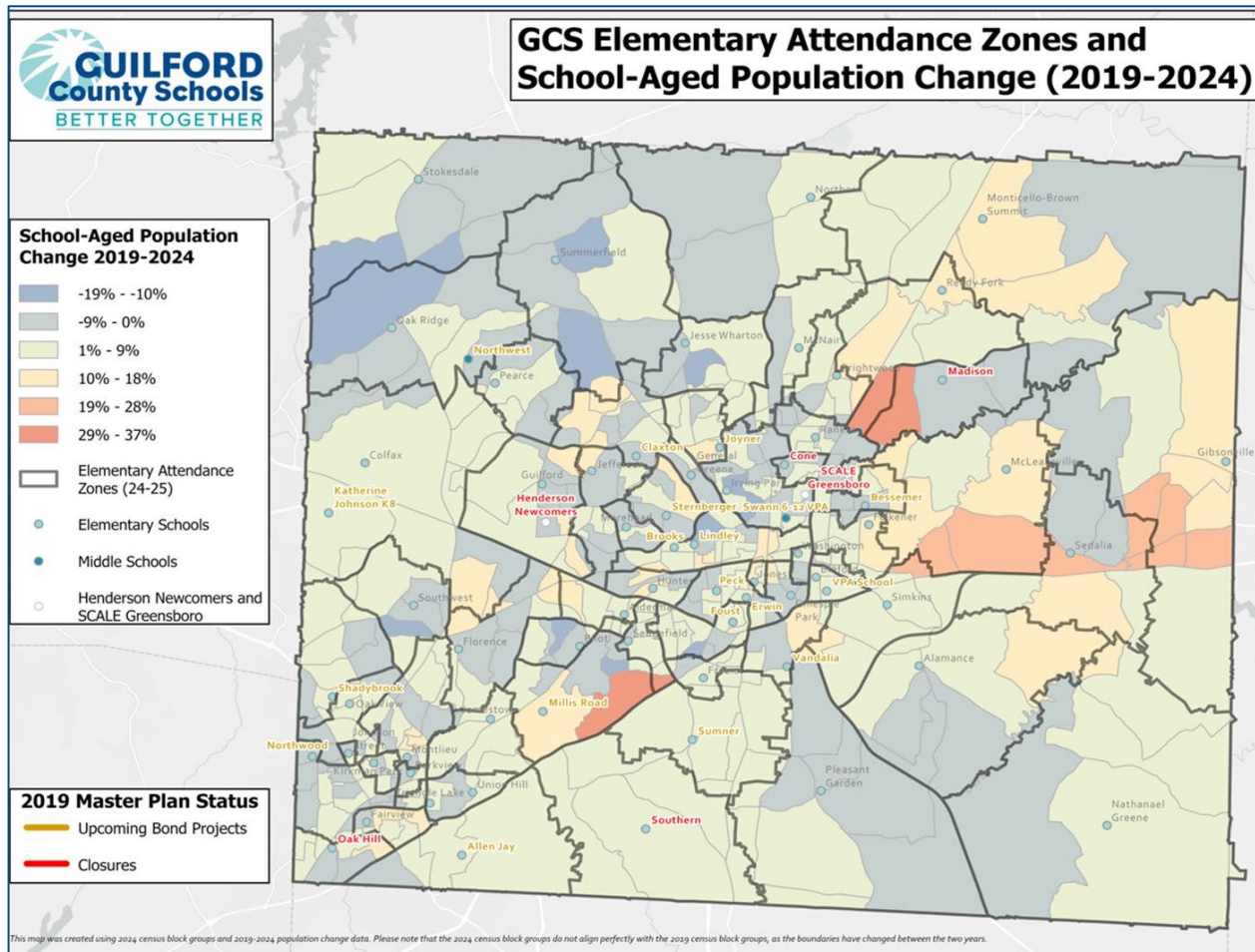
School Capacity and Enrollment

Historical Enrollment Trends

| School | 2018-19 | 2019-20 | 2020-21 | 2021-22 | 2022-23 | 2023-24 | 2024-25 |
|------------------------------|---------------|---------------|---------------|---------------|---------------|---------------|---------------|
| Guilford County Schools | 71,698 | 71,414 | 69,311 | 68,202 | 67,949 | 66,844 | 66,474 |
| Charter Schools | 7,381 | 7,790 | 8,513 | 9,307 | 9,977 | 10,632 | 11,246 |
| Home Schools | 5,367 | 5,827 | 7,052 | 6,101 | 4,747 | 4,999 | 4,999 |
| Private Schools | 6,523 | 6,191 | 6,262 | 6,509 | 6,826 | 7,156 | 7,156 |
| Total Guilford County | 90,969 | 91,222 | 91,138 | 90,119 | 89,499 | 89,631 | 89,875 |

- GCS enrollment counts are grades K-12 and do not include PreK as of day 20.
- Home School membership was obtained from the NC Department of Administration's NC HOME School Statistical Summaries 2018-19 through 2023-24. 2024-25 is unavailable until after EOY data are published. Replicated 2023-24 data for 2024-25.
- Private School membership was obtained from the NC Department of Administration's NC PRIVATE SCHOOL Statistical Summaries 2018-19 through 2023-24. 2024-25 is unavailable until after EOY data are published. Replicated 2023-24 data for 2024-25.
- Charter School membership data is the average for all completed years.

Guilford County Projected School-Aged Population Change





Attendance Boundary Modification Process

Policy Code: 4150 School Assignment

III. Attendance Zone Considerations

A. The school attendance plan for Guilford County Schools is designed to foster the mission of public education, to include promotion of higher levels of academic achievement and good citizenship development, by:

1. recognizing and valuing diversity;
2. using clearly defined boundaries, where practical;
3. working toward common feeder patterns throughout the district;
4. organizing schools in a K-5, K-8, 6-8, and 9-12 pattern generally;
5. seeking to avoid changing an attendance zone more often than every four (4) years; and
6. encouraging participation by all citizens in our schools.

B. The plan should serve the economic interest of taxpayers by:

1. efficiently utilizing transportation dollars;
2. anticipating needs for additional schools or additions to existing facilities in areas of high growth and communicating to the public these needs in a timely way;
3. anticipating and communicating to the public the need to have all facilities meet approved health, safety, environmental, and educational standards applicable to public schools; and
4. seeking to utilize school facilities fully and efficiently

Adopted: March 8, 2022

School Closure and Consolidation Considerations

- ✓ Facility Conditions
- ✓ School Capacity and Enrollment
- ✓ Cost to Operate
- ✓ Transportation Efficiency
- ✓ School and Community Engagement
- ✓ Alternative Uses

Southern Elementary Closure & Consolidation Recommendation

Southern Elementary Historical 20th Day Kindergarten – 5th Grade Enrollment

| 15-16 | 16-17 | 17-18 | 18-19 | 19-20 | 20-21* | 21-22 | 22-23 | 23-24 | 24-25** |
|-------|-------|-------|-------|-------|--------|-------|-------|-------|---------|
| 307 | 307 | 297 | 279 | 265 | 211 | 232 | 234 | 219 | 202 |

* 20-21 enrollment is 60th Day due to COVID-19

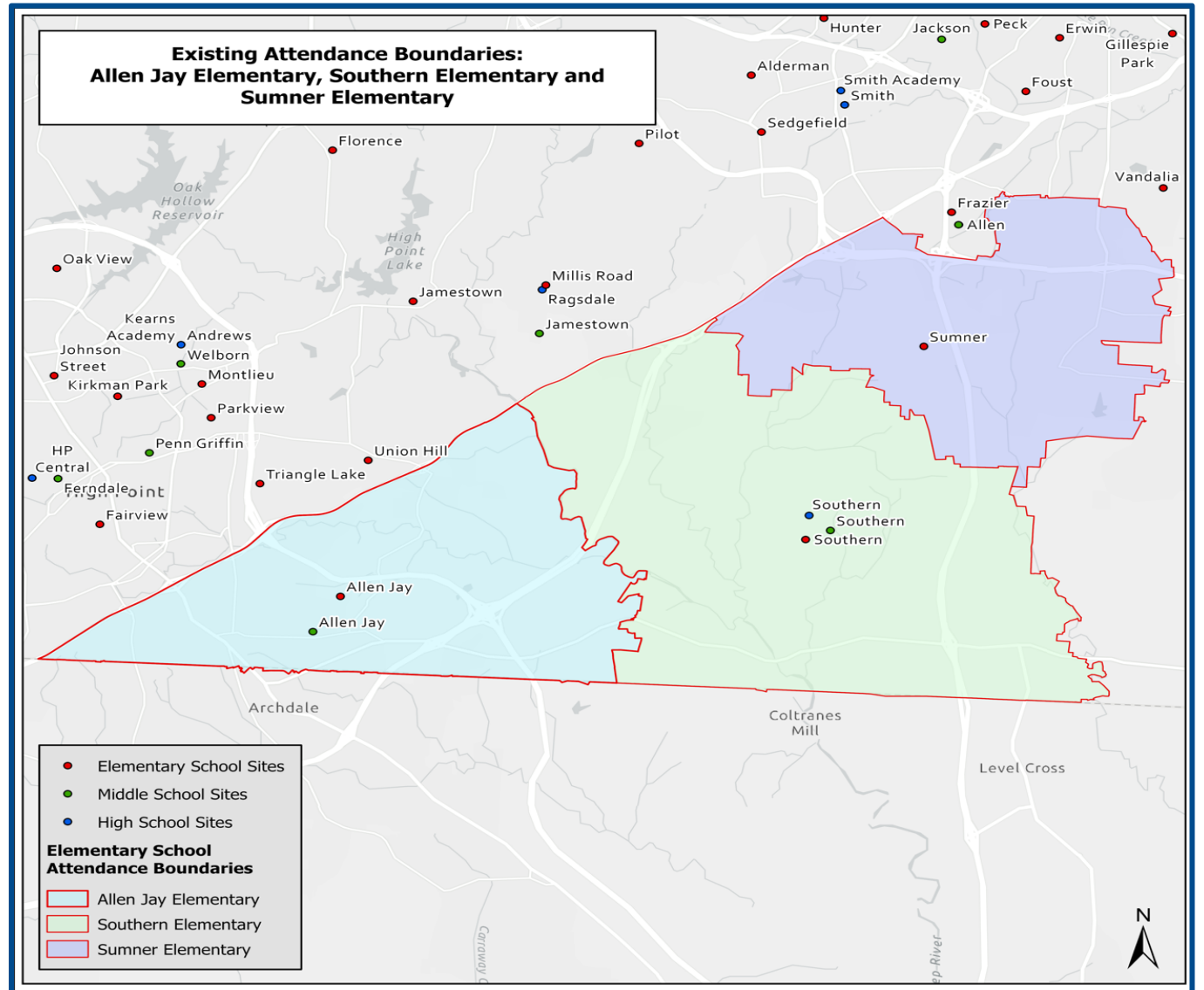
**24-25 enrollment is the Best of Month 1 or Month 2

Southern Elementary Attendance Boundary Recommendation

Closure & Consolidation
Beginning School Year 2027-28

Existing Attendance Boundaries

Affected Schools:
Allen Jay & Sumner Elementary

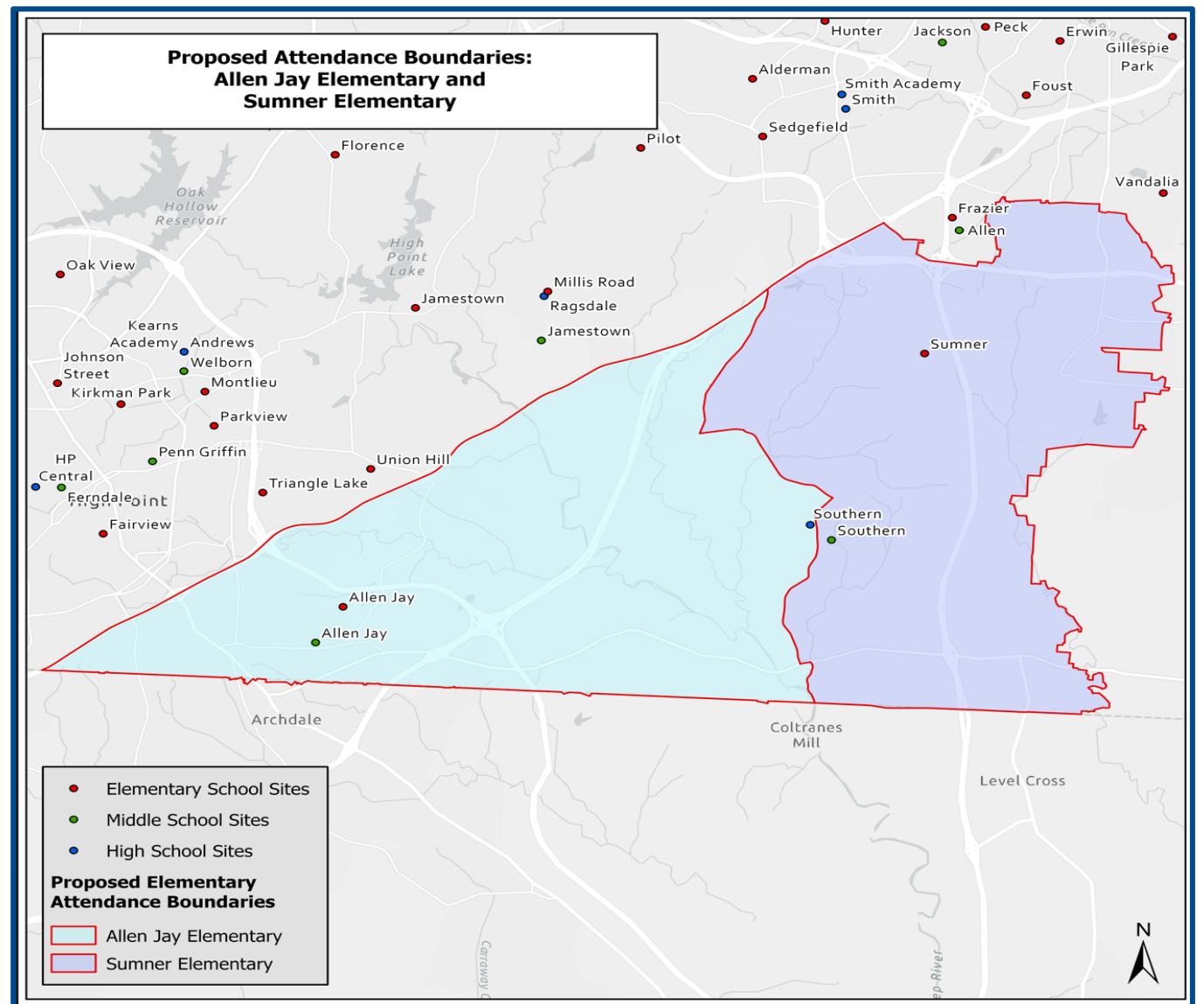


Southern Elementary Attendance Boundary Recommendation

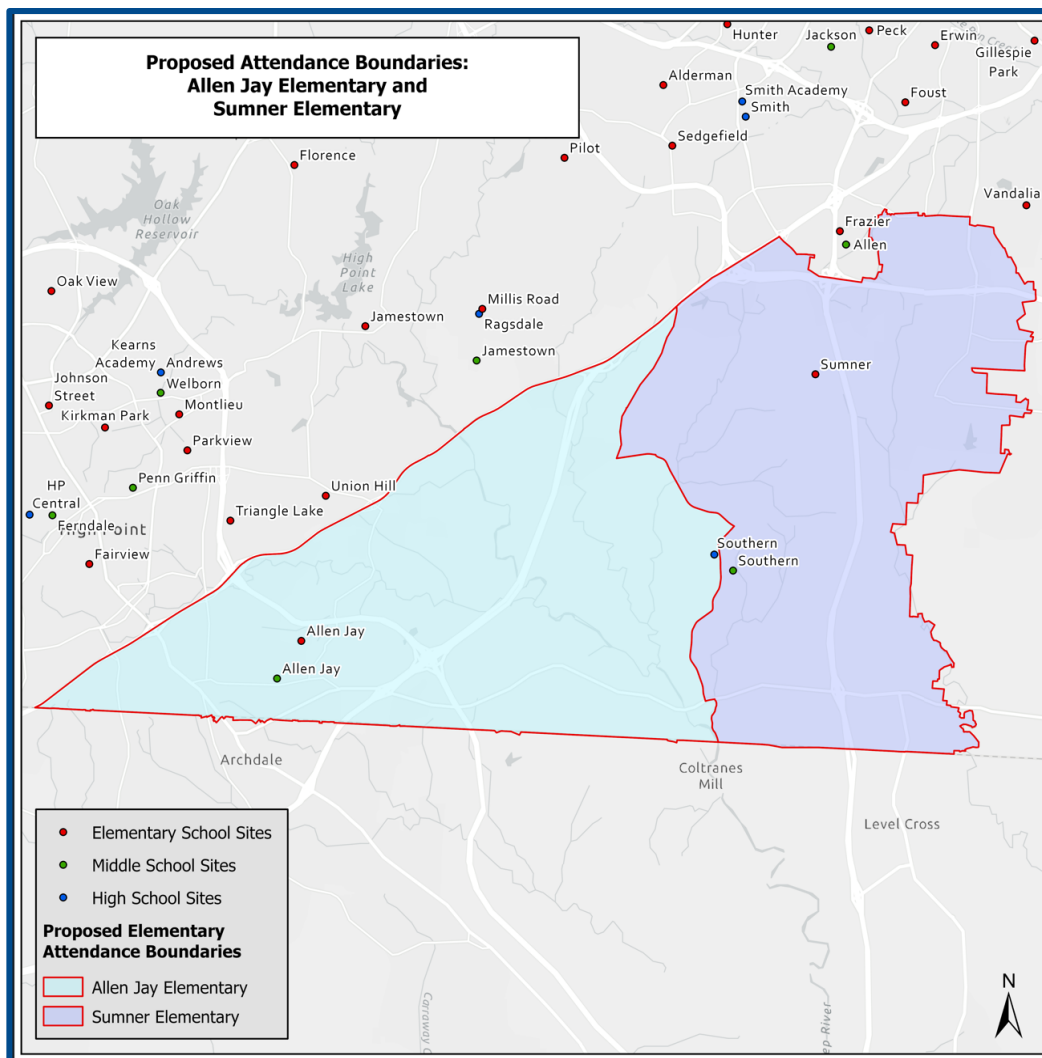
Closure & Consolidation
Beginning School Year 2027-28

Recommended Attendance Boundaries

Affected Schools:
Allen Jay & Sumner Elementary



Projected Boundary Utilizations



| Existing Utilization | | | | | | Projected Utilization | | | | |
|-------------------------------|-------------------|-----------------------------|---------------------------------|----------------------------|-------------------------------|---------------------------------------|--|--|--|---|
| Schools | Capacity K - 5 | 24-25 K - 5 Live In | 24-25 Live In Utilization | 24-25 K-5 ADM | 24-25 K - 5 Utilization | 29-30 Projected K-5 Capacity | 29-30 Projected K - 5 Live In | 29-30 Projected K - 5 Live In Utilization | 29-30 Projected K-5 Enrollment | 29-30 Projected K-5 Enrollment Utilization |
| Southern Elem (Closure) | 344 | 166 | 48% | 202 | 59% | ~ | ~ | ~ | ~ | ~ |
| Allen Jay Elem (Bond Rebuild) | 572 | 413 | 72% | 441 | 77% | 738 | 622 | 84% | 625 | 85% |
| Sumner Elem (Bond Rebuild) | 744 | 527 | 71% | 553 | 74% | 738 | 727 | 99% | 690 | 93% |
| Total ES Capacity | 1660 | 1106 | | 1196 | | 1476 | 1349 | | 1315 | |
| | | Elem Live In Utilization | 67% | Elem ADM Utilization | 72% | Projected Elem Live In Utilization | | 91% | Elem Projected Enrollment Utilization | 89% |

Madison Elementary Closure & Consolidation Recommendation

Madison Elementary Historical 20th Day Kindergarten – 5th Grade Enrollment

| 15-16 | 16-17 | 17-18 | 18-19 | 19-20 | 20-21* | 21-22 | 22-23 | 23-24 | 24-25** |
|-------|-------|-------|-------|-------|--------|-------|-------|-------|---------|
| 218 | 220 | 227 | 222 | 228 | 175 | 205 | 223 | 192 | 207 |

* 20-21 enrollment is 60th Day due to COVID-19

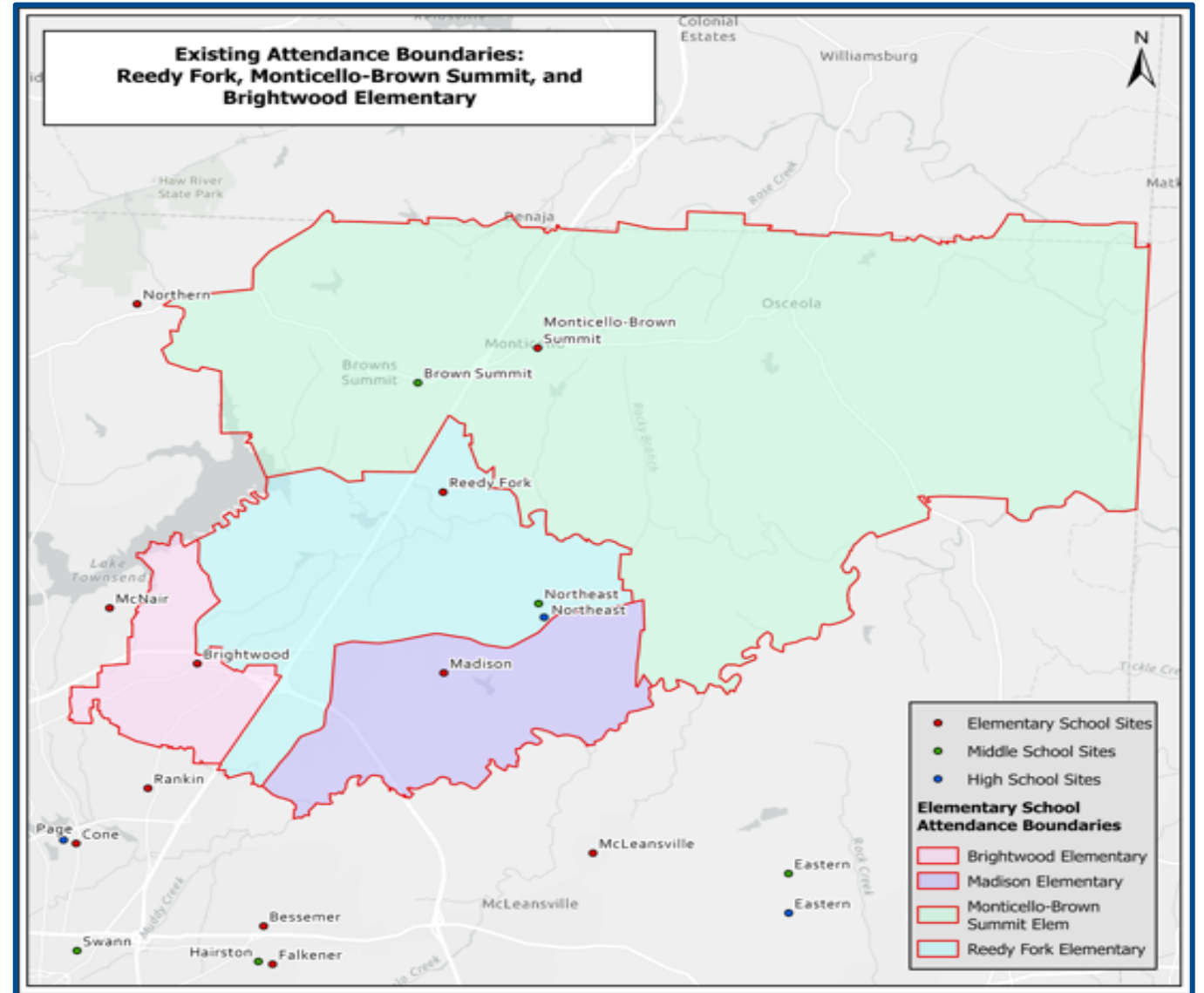
**24-25 enrollment is the Best of Month 1 or Month 2

Madison Elementary Attendance Boundary Recommendation

Closure & Consolidation
Beginning School Year 2026-27

Existing Attendance Boundaries

Affected Schools:
Reedy Fork, Monticello-Brown
Summit, & Brightwood Elementary

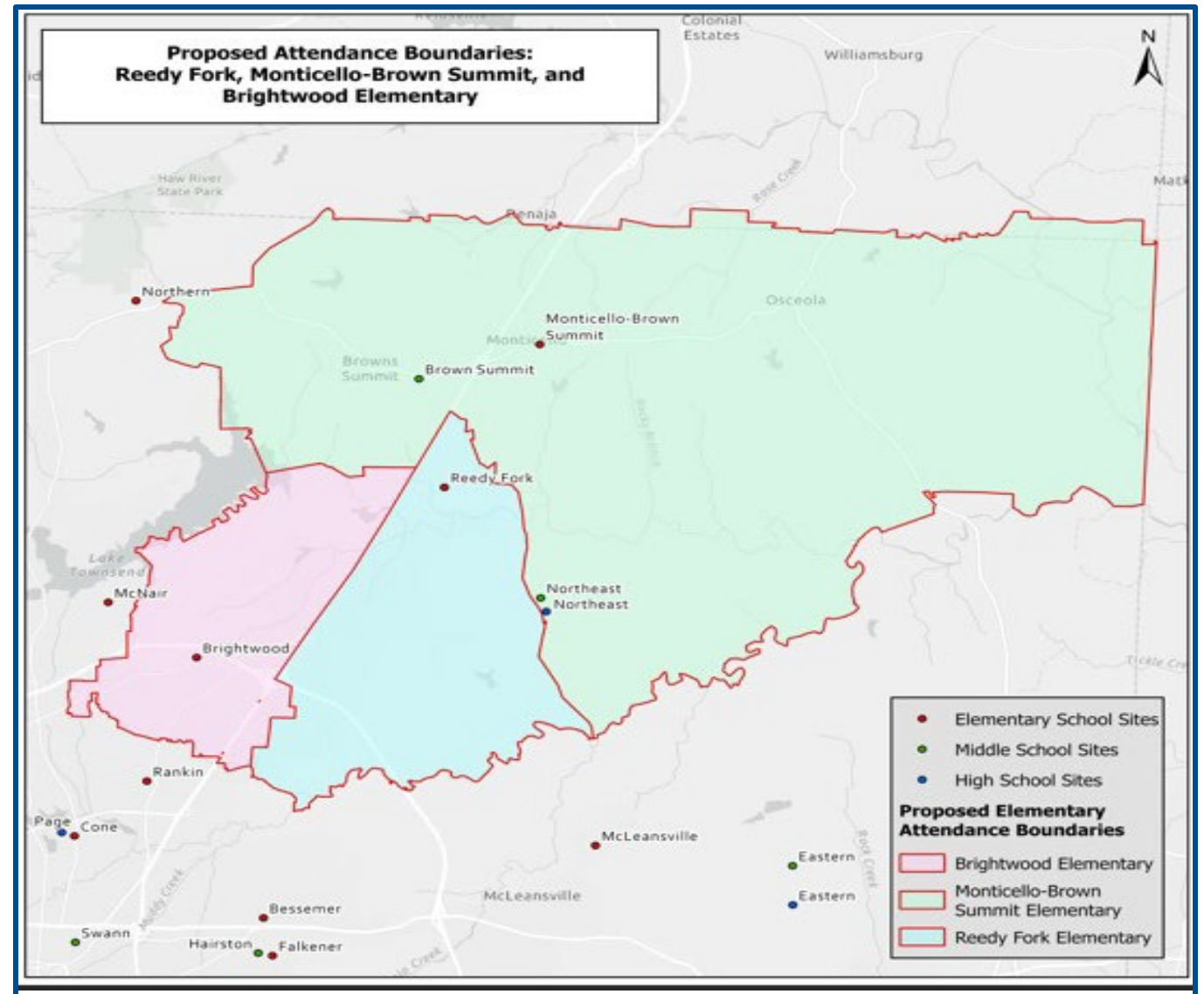


Madison Elementary Attendance Boundary Recommendation

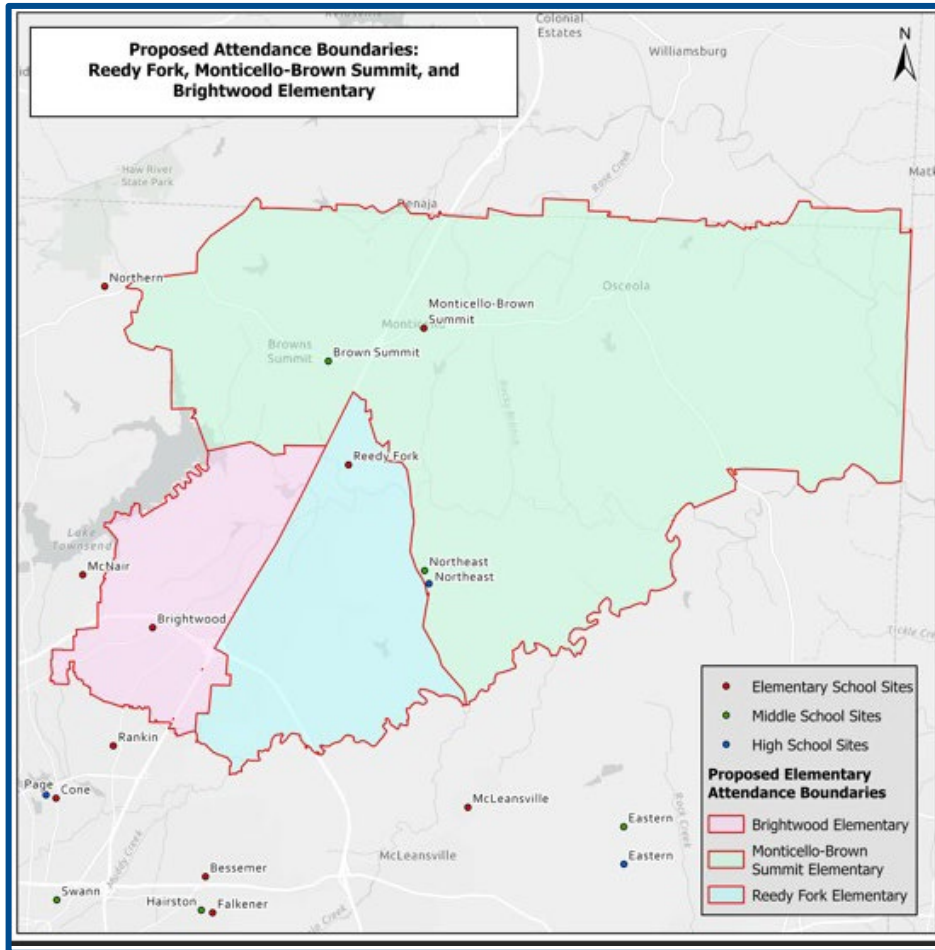
Closure & Consolidation
Beginning School Year 2026-27

Recommended Attendance Boundaries

Affected Schools:
Reedy Fork, Monticello-Brown
Summit, & Brightwood Elementary



Projected Boundary Utilizations



| Schools | Capacity K - 5 | 24-25 K - 5 Live In | 24-25 Live In Utilization | 24-25 K-5 ADM | 24-25 K - 5 Utilization | 29-30 Projected K-5 Capacity | 29-30 Projected K - 5 Live In | 29-30 Projected K - 5 Live In Utilization | 29-30 Projected K-5 Enrollment | 29-30 Projected K-5 Enrollment Utilization |
|------------------------------|-------------------|-----------------------------|---------------------------------|----------------------------|-------------------------------|---------------------------------------|--|--|---|---|
| Madison (Closure) | 344 | 266 | 77% | 207 | 60% | ~ | ~ | ~ | ~ | ~ |
| Brightwood Elem | 704 | 487 | 69% | 456 | 65% | 704 | 535 | 76% | 537 | 76% |
| Monticello-Brown Summit Elem | 704 | 299 | 42% | 277 | 39% | 704 | 316 | 45% | 345 | 49% |
| Reedy Fork Elem | 738 | 646 | 88% | 504 | 68% | 738 | 670 | 91% | 686 | 93% |
| Total ES Capacity | 2490 | 1698 | | 1444 | | 2146 | 1521 | | 1568 | |
| | | Elem Live In Utilization | 68% | Elem ADM Utilization | 58% | Projected Elem Live In Utilization | | 71% | Projected Enrollment Utilization | 73% |

Vandalia & Washington Elementary Closures & Consolidation Recommendation

Vandalia Elementary Historical 20th Day Kindergarten – 5th Grade Enrollment

| 15-16 | 16-17 | 17-18 | 18-19 | 19-20 | 20-21* | 21-22 | 22-23 | 23-24 | 24-25** |
|-------|-------|-------|-------|-------|--------|-------|-------|-------|---------|
| 253 | 241 | 241 | 255 | 215 | 135 | 180 | 210 | 208 | 219 |

* 20-21 enrollment is 60th Day due to COVID-19

**24-25 enrollment is the Best of Month 1 or Month 2

Washington Elementary Historical 20th Day Kindergarten – 5th Grade Enrollment

| 15-16 | 16-17 | 17-18 | 18-19 | 19-20 | 20-21* | 21-22 | 22-23 | 23-24 | 24-25** |
|-------|-------|-------|-------|-------|--------|-------|-------|-------|---------|
| 346 | 346 | 324 | 332 | 335 | 314 | 315 | 265 | 266 | 215 |

* 20-21 enrollment is 60th Day due to COVID-19

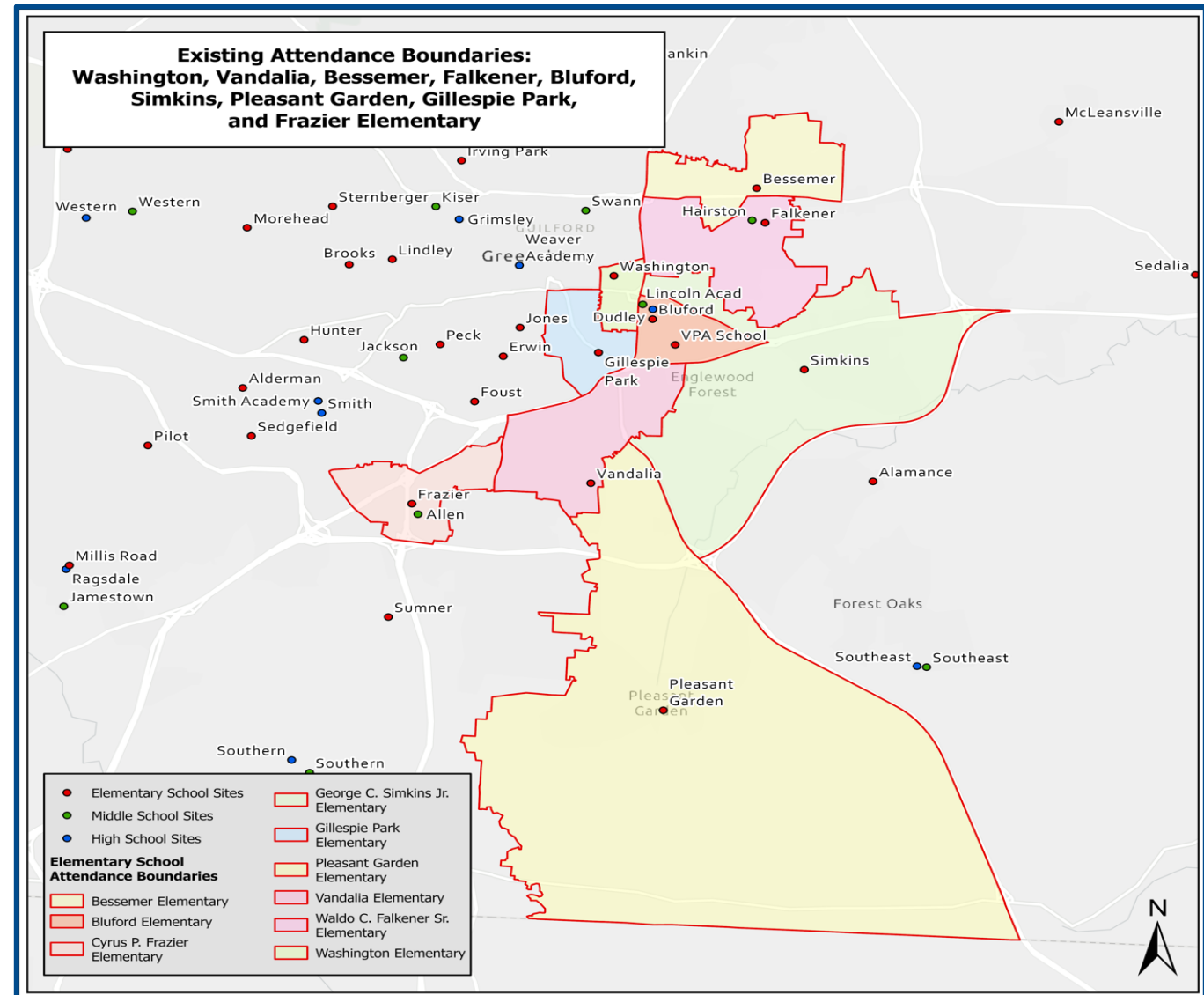
**24-25 enrollment is the Best of Month 1 or Month 2

Vandalia & Washington Elementary Attendance Boundary Recommendation

Closure & Consolidation
Beginning School Year 2026-27

Existing Attendance Boundaries

Affected Schools:
Bessemer, Falkener, Bluford, Simkins,
Pleasant Garden, Gillespie Park,
& Frazier Elementary

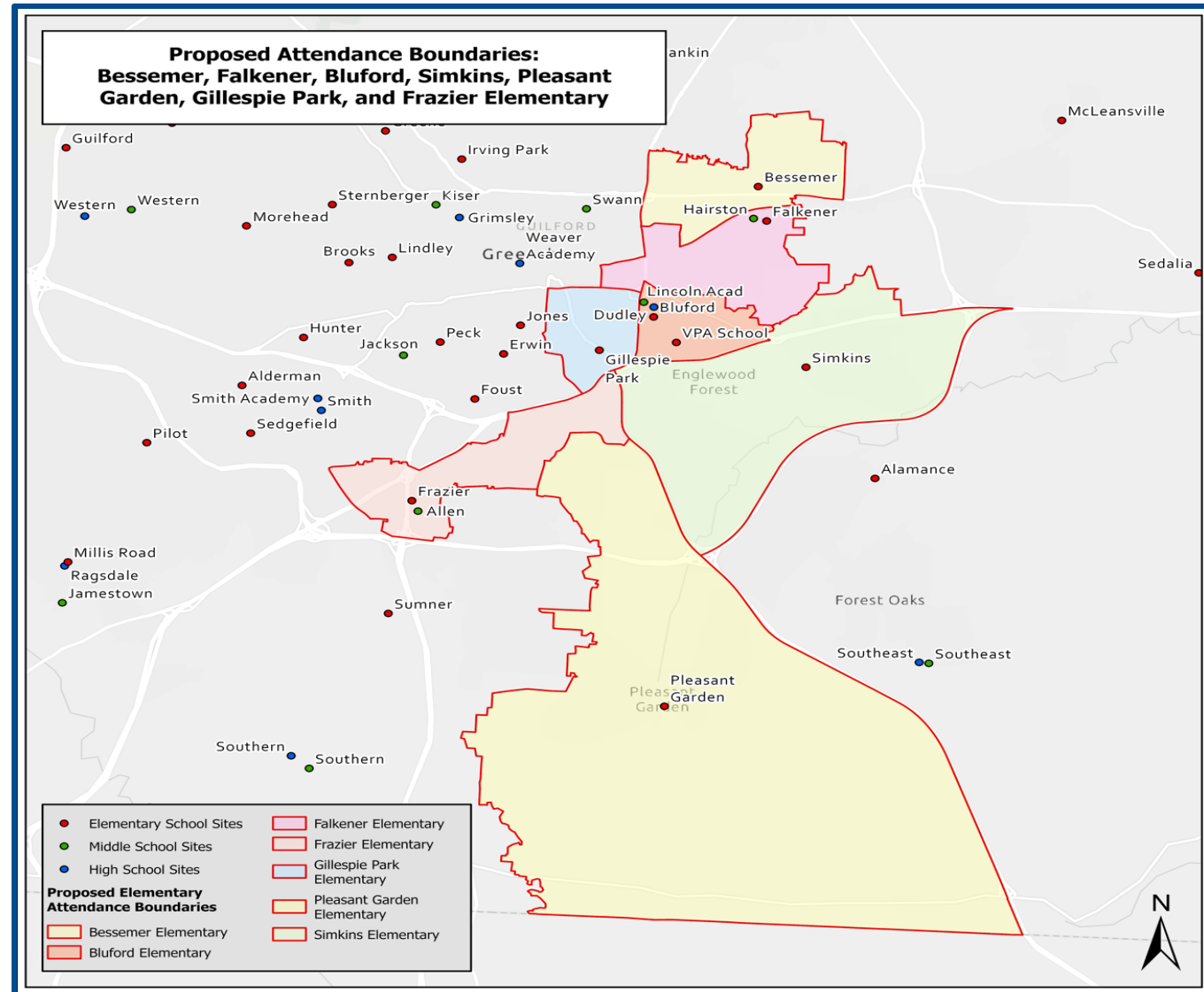


Vandalia & Washington Elementary Attendance Boundary Recommendation

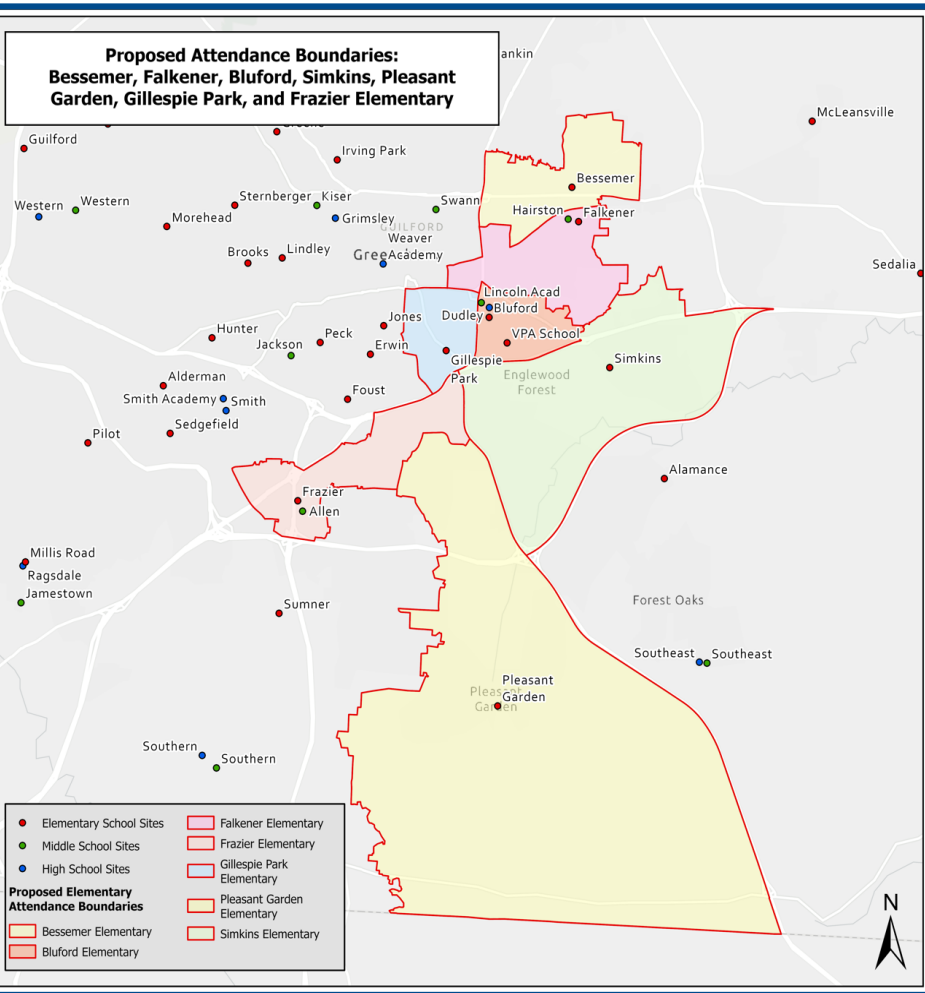
Closure & Consolidation
Beginning School Year 2026-27

Recommended Attendance Boundaries

Affected Schools:
Bessemer, Falkener, Bluford, Simkins,
Pleasant Garden, Gillespie Park,
& Frazier Elementary



Projected Boundary Utilizations



| Schools | Existing Utilization | | | | | Projected Utilization | | | | |
|-------------------------------------|----------------------|--------------------------|---------------------------|----------------------|-------------------------|------------------------------------|-------------------------------|---|---------------------------------------|--|
| | Capacity K - 5 | 24-25 K - 5 Live In | 24-25 Live In Utilization | 24-25 K-5 ADM | 24-25 K - 5 Utilization | 29-30 Projected K-5 Capacity | 29-30 Projected K - 5 Live In | 29-30 Projected K - 5 Live In Utilization | 29-30 Projected K-5 Enrollment | 29-30 Projected K-5 Enrollment Utilization |
| Vandalia Elem (Closure) | 310 | 285 | 92% | 219 | 71% | ~ | ~ | ~ | ~ | ~ |
| Washington Elem (Closure) | 514 | 192 | 37% | 215 | 42% | ~ | ~ | ~ | ~ | ~ |
| Bessemer Elem (Bond Rebuild) | 575 | 499 | 87% | 471 | 82% | 738 | 476 | 64% | 482 | 65% |
| Bluford Elem (Choice) | 406 | 157 | 39% | 265 | 65% | 406 | 227 | 56% | 367 | 90% |
| Frazier Elem | 400 | 360 | 90% | 302 | 76% | 400 | 382 | 96% | 345 | 86% |
| Falkener Elem (Choice) | 704 | 506 | 72% | 514 | 73% | 704 | 599 | 85% | 621 | 88% |
| Gillespie Elem | 462 | 232 | 50% | 199 | 43% | 462 | 331 | 72% | 307 | 66% |
| Pleasant Garden Elem | 744 | 396 | 53% | 437 | 59% | 744 | 414 | 56% | 488 | 66% |
| Simkins Elem | 620 | 724 | 117% | 566 | 91% | 620 | 564 | 91% | 529 | 85% |
| VPA Elem (100% Choice) | 614 | | | | | | | | | |
| Total ES Capacity in HS Zone | 5349 | 3351 | | 3188 | | 4074 | 2993 | | 3139 | |
| | | Elem Live In Utilization | 63% | Elem ADM Utilization | 60% | Projected Elem Live In Utilization | | 73% | Elem Projected Enrollment Utilization | 77% |

Operational Impacts

Projected Annualized Campus Operations Savings

| School Name | Projected Annualized Savings | Effective School Year |
|-----------------------|------------------------------|-----------------------|
| Madison Elementary | \$422,806 | 2026 - 27 |
| Vandalia Elementary | \$438,977 | 2026 - 27 |
| Washington Elementary | \$496,550 | 2026 - 27 |
| Southern Elementary | \$376,444 | 2027 - 28 |
| Total | \$1,734,777 | |

Next Steps



School Locator Instructions

- ✓ View the Presentation that includes the Proposed Boundary Maps at www.gcsnc.com/boundary
- ✓ Check Your Address Using the Neighborhood School Locator
- ✓ Provide Feedback Through Let's Talk
- ✓ Participate in the Public Hearing on June 10

Communications Outreach and Engagement

Communicating Proactively

- Families and staff have been engaged through face-to-face outreach
- Families are informed of choice options before the fall choice showcase
- Transparent communication honors families' need to plan and to treats families with respect

Building Stability

- No staff members will lose their jobs as a result of these changes.
- Students will continue to benefit from a full range of enrichment opportunities including music, art, physical education, and library media, etc.

Engaging School Communities

- Events will be planned to support the development of new school communities
- Schools will prioritize cultivating a positive school culture from the start
- Receiving schools will provide intentional supports that will ensure each students is known, valued and connected



Consolidation Timeline

Boundary Change Process

May 13, 2025

Present Boundary Recommendation

June 10, 2025

Public Hearing Regarding Consolidation

- Board of Education will consider proposed boundary recommendation following the public hearing

May 14-June 10, 2025

Public Review and Feedback Period

- Provide an update to families about what was presented to the board

June 16, 2025

Update Website

- Provide a link for 2026-27 and 2027-28 School Locators and notify families of their 2026-27 and 2027-28 school assignments

Questions & Dialogue

