

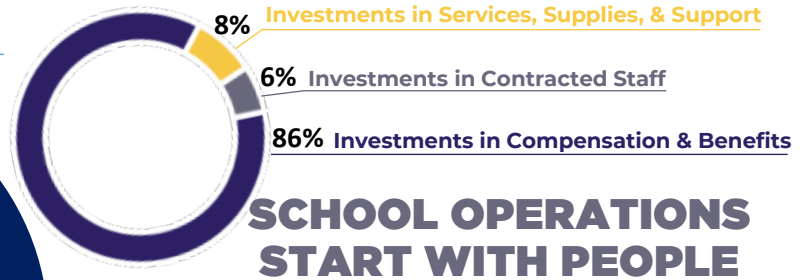
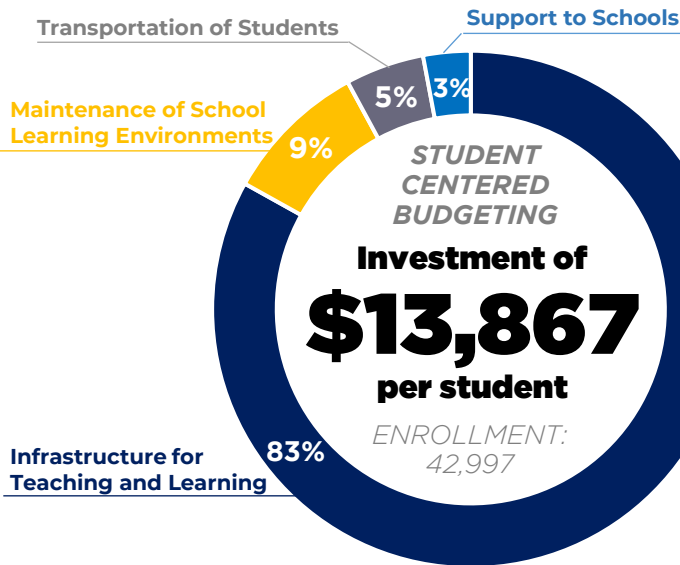
## 2025-2026 APPROVED BUDGET

The Henry County Board of Education adopted the Superintendent's recommended budget on May 12. The budget prioritizes investments that provide students access to exceptional learning environments.

### GENERAL FUND BUDGET \$596.2 MILLION

\* Budgeted expenditures; revenue forecast of \$568.4M

**FUNDING SOURCES**  
51.7% LOCAL 47.9% STATE 0.4% FEDERAL



**92%** of General Fund expenditures support wages, a critical investment in educational and operational excellence

### COMPETITIVE COMPENSATION

**Starting Teacher Salary** **\$53,910** 5.9% increase in salary schedule compared to Fiscal Year 2024-2025

The FY26 starting teacher salary represents an improvement of more than \$15,000 since 2018. This year's budget honors steps in salary schedules, increases the value of schedules for each job family, and implements state-mandated increases in employee benefits.

**\$33 MILLION**

Total of new investments relating to salaries and benefits, including an \$11 million midyear salary adjustment

### STAFFING INCREASES

**41**

New teacher positions

- 17 teachers for Exceptional Student Ed.
- 9 teachers for strategic plan priorities in World Languages, orchestra
- 7 support positions, including psychologists, instructional and behavior intervention coaches

### SPECIAL REVENUE FUND

#### \$56.2 MILLION EXPENSE PLAN

Funding Source: 5% State | 33% Local | 62% Federal



#### After-School Enrichment

Support continued investments in literacy, math, STEM, fine arts, and P.E. instruction in all 29 elementary after-school programs



#### Highly Effective Instruction

Provide additional enhancements to learning environments and aligned professional development opportunities for teachers/staff



#### Arts for the Arts

Invest in the next phase of band uniform growth and replacement; and fund stipends associated with arts programming

### CAPITAL PROJECTS FUND

#### \$69.4 MILLION EXPENSE PLAN

Funding Source: 100% Local



#### STEM High School

Significant progress on the district's first state-of-the-art STEM high school located in Stockbridge to open in fall 2027



#### Safety & Security Investments

Ensure learning environments are safe and supportive through continuation and expansion of related investments



#### Asset Growth & Replacement

Equip four elementary schools, one middle school, one high school, Excel Academy and J.B. Henderson Center with new furniture