



# 2017 Capital Improvements Program Bond Election



**POTH**  
INDEPENDENT  
SCHOOL DISTRICT

# Why Call a Bond Election?

- 20 Member Facilities Planning Committee
- Aging District Facilities and Stretched Operating Funds
- Priority Needs for Career & Tech, Band & Music, and Jack Lane Field



**POTH**  
INDEPENDENT  
SCHOOL DISTRICT

# Facilities

1955:	Old Gymnasium	
1960:	L-Wing (5 <sup>th</sup> Grade)	
1979:	Ag/Vocational Building	
1984:	PK, Field House, Concession & RR	
1988:	HS Main Building	
1993:	New Gymnasium & Jack Lane Bleachers	
1994:	Junior High & Library	
2002:	Elementary (1 <sup>st</sup> – 4th)	Bond \$2.2 m (2026)
2007:	Cafeteria and Band Hall	
2014:	STEM Building	Bond \$3.9 m (2033)



**POTH**  
INDEPENDENT  
SCHOOL DISTRICT

# Current Projects

June 2017, the Board of Trustees approved the issuance of \$2.3 million in Maintenance Tax Notes to address **critical capital improvement projects** in the district. These projects include no new square footage; only repairs to existing buildings.



**POTH**  
INDEPENDENT  
SCHOOL DISTRICT

# Current Projects

- Refurbish the Old Gymnasium
- High School Foundation Repairs
- Replace High School Roof
- Drainage Improvements at the High School and Elementary School
- Energy Saving Measures across the District



**POTH**  
INDEPENDENT  
SCHOOL DISTRICT



# Current Projects

## Refurbish Old Gym



**POTH**  
INDEPENDENT  
SCHOOL DISTRICT

# Current Projects

## Refurbish Old Gym





# Current Projects

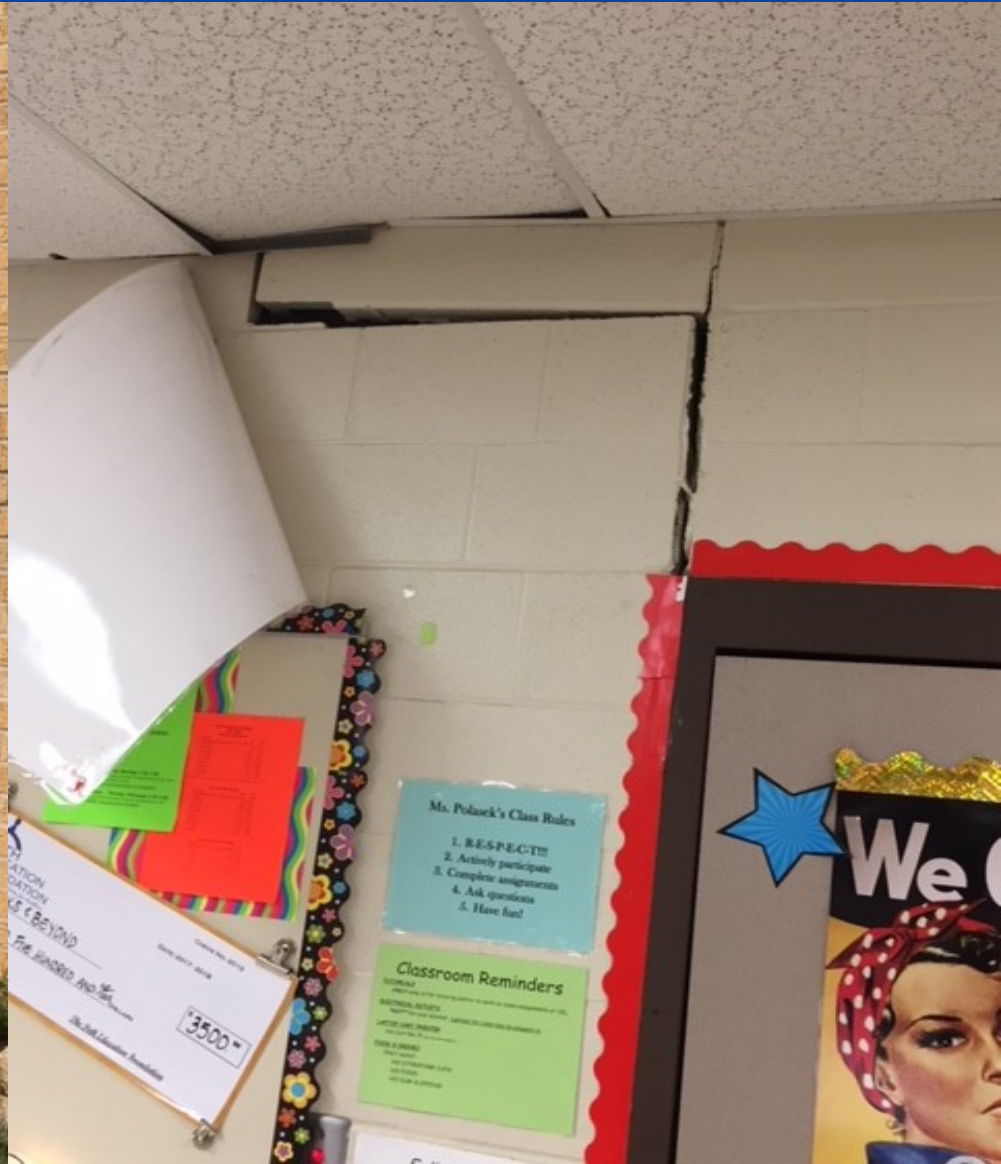
## Refurbish Old Gym





# Current Projects

## Foundation Repair at High School





# Current Projects

## New Roof on High School



**POTH**  
INDEPENDENT  
SCHOOL DISTRICT

# Current Projects

## New Roof on High School





# Current Projects

## Drainage at HS & Elem





# Current Projects

## Energy Saving Measures



# What is on the ballot?

- \$10,000,000 of General Obligation Bonds
- Financing the Acquisition, Construction, and Equipment of School Buildings
- Levying the Tax in Payment Thereof  
Interest & Sinking (I&S) Tax Rate



**POTH**  
INDEPENDENT  
SCHOOL DISTRICT

# Priority Projects For the Bond

New Career and Technology Facility

Renovate and Increase Space for Band and Music Programs

Renovate and Increase Space for Culinary Arts Program (This is a CTE Program)

Renovations and Upgrades to Jack Lane Field



**POTH**  
INDEPENDENT  
SCHOOL DISTRICT



# Current Ag/Welding/Building Trades





# Current Ag/Welding/Building Trades



# Current Ag/Welding/Building Trades





# Location Proposed CTE Building



**POTH**  
INDEPENDENT  
SCHOOL DISTRICT

# Current Band Hall & Music





# Current Band Hall & Music



# Current Culinary Arts Classroom



# Current Culinary Arts Classroom





# Current Jack Lane Field



**POTH**  
INDEPENDENT  
SCHOOL DISTRICT



# Current Jack Lane Field





# Current Jack Lane Field



# Tax Impact to Residents

- Estimated 21.77¢ increase to \$1.39 for the 2018-2019 school year
- Calculated Impact to \$100,000 Home with \$25,000 Homestead Exemption

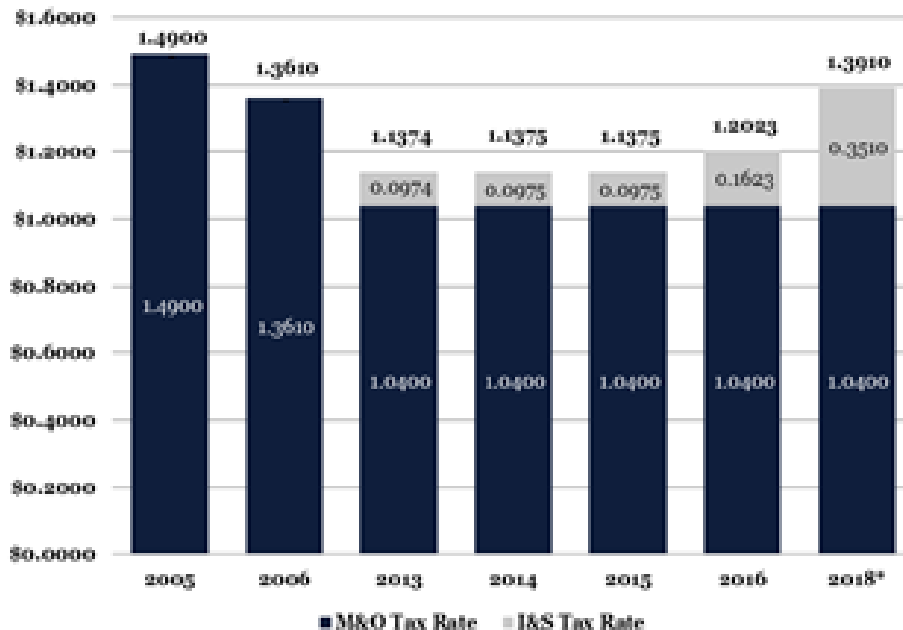
Annual	Monthly	Daily
\$163.25	\$13.60	\$0.45



**POTH**  
INDEPENDENT  
SCHOOL DISTRICT



# Historical Tax Rates



- With Bond the 2018-2019 Rate Projected to be \$1.39
- Lower Than 2005-2006 Rate of \$1.49



**POTH**  
INDEPENDENT  
SCHOOL DISTRICT

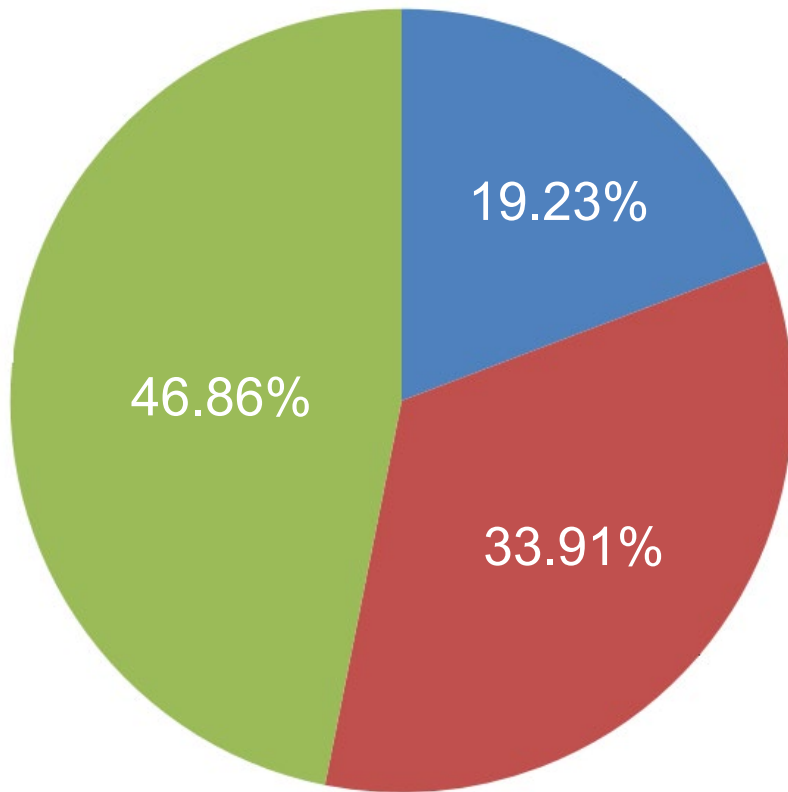
# 2017 ISD Tax Rates

<u>DISTRICT</u>	<u>TOTAL TAX RATE</u>	<u>M &amp; O</u>	<u>I &amp; S</u>
Poth ISD	1.1238	.9927	.1311
Falls City ISD	1.54	1.06	.48
Floresville ISD	1.4450	1.04	.4050
Stockdale ISD	1.34	1.04	.30
La Vernia ISD	1.4150	1.04	.3750
Pleasanton ISD	1.4672	1.04	.4272
Kenedy ISD	1.1855	1.04	.1455
Seguin ISD	1.42	1.0600	.3600
East Central ISD	1.335	1.04	.295



**POTH**  
INDEPENDENT  
SCHOOL DISTRICT

# Tax Revenue Distribution



- Commercial/Oil & Gas
- Farm/Ranch/Open-Space Land
- Residential

Poth ISD 2016 Net Taxable Assessed Valuation



**POTH**  
INDEPENDENT  
SCHOOL DISTRICT



# Impact to Senior Citizens

- Over 65 Homestead Plus 20 Acres - School Taxes are **Frozen**
- If You Qualify For the Senior Citizen Exemption There is **NO TAX INCREASE** on Your Homestead Plus 20 Acres
- WCAD: Jenny Coldeway & Lisa Garcia



**POTH**  
INDEPENDENT  
SCHOOL DISTRICT

# PLEASE VOTE!

## EARLY VOTING

**Poth ISD Administration Building**

**October 23 – November 3, 2017**

**7:30 AM to 4:00 PM**

*or*

## ELECTION DAY

**Poth City Hall**

**November 7, 2017**

**7:00 AM to 7:00 PM**



**POTH**  
INDEPENDENT  
SCHOOL DISTRICT

# QUESTIONS?



**POTH**  
INDEPENDENT  
SCHOOL DISTRICT