

BA Safety Plan for SY 25 - 26

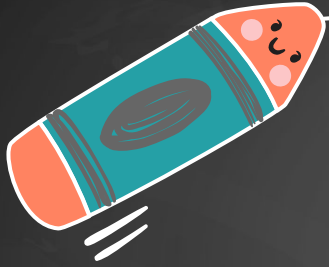
January 27, 2025

Why a Safety Plan?




- Ed Code requires that we have a Safety Plan
 - California Education Code (EC) Section 32281(a) requires every kindergarten through grade twelve school, public and public charter, including community and court schools, to develop and maintain a CSSP designed to address campus risks, prepare for emergencies, and create a safe, secure learning environment for students and school personnel.

Safety Plan Goals



Goal 1: By June 2026, Bridges will increase students' sense of connection and belonging as measured by the increasing favorable data on the Panorama Survey and monthly diagnostic surveys

Goal 2: By June of 2026, 75% of Bridges teachers will state that they can meet the social emotional needs of their students on the Panorama Survey



Goal 1: By June 2026, Bridges will increase students' sense of connection and belonging as measured by the increasing favorable data on the Panorama Survey and monthly diagnostic surveys

Strategy 1.1

Hold monthly celebrations or student events to help students feel part of the community

Strategy 1.2

Implementing a clear and consistent discipline plan to make sure students feel safe and supported



Strategy 1.3

Hold quarterly empathy interviews to further understand how students are feeling at Bridges

Strategy 1.4

Execute SEL lessons in class to help students address issues they are facing and help peers better understand each other

Strategy 1.5

Opportunities for students to join various Clubs so that they feel more connected to their peers and Bridges



Strategy 1.6


Access to school gear in order for students feel part of the Bridges community

Strategy 1.7

Hold homeroom competitions to increase students' connection to a class and each other; Have school or class presentations that connects students' time at Bridges with future goals and endeavours; Continuing with Schedule 3 Spirit days

Other Ideas???

Please discuss...



Goal 2: By June of 2026, 75% of Bridges teachers will state that they can meet the social emotional needs of their students on the Panorama Survey

Strategy 2.1

Collaboratively work with faculty to develop school wide norms and procedures for the school year (presentations regarding norms to community, culture project plan connected to rules and procedures)

Strategy 2.2

Use Second Step Curriculum and Panorama Education Playbook to support student socio-emotional well-being



Strategy 2.3

Differentiated professional development provided by Trauma Skilled Schools and our lead team at Bridges. Continue partnership with Trauma Skilled Schools to support teachers to implement strategies to help students with SE development

Strategy 2.4

Celebrating faculty accomplishments and acknowledging growth (Spartan moments at the start of staff meetings, Teacher of the Month). Use of continual teacher feedback forms through out the school year to be attentive to teachers needs and professional development (staff surveys quarterly, PD feedback, PLC feedback).

Strategy 2.5

Continue MTSS training and implementation with a focus on student social-emotional well-being



Strategy 2.6

Collaboration in grade levels and departments to incorporate SEL content in course work

Strategy 2.7

Finding ways for staff to reflect and support their own social emotional needs (mindful moments in meetings, circles with staff, coaching conversations, etc); Implement SEL into courses; Greeting students at the door at the start of class to assess student well-being as they enter class; Faculty and staff participating in student extra-curricular activities; Developing a Schedule 3 Committee to plan positive school culture events

Other Ideas???

Please discuss...

Analysis of School Climate Data

1. On the agenda or directly on this slide deck, click on the
 - a. [Faculty Synthesis of Fall 2023 Student Panorama Surveys](#)
 - b. [Faculty Panorama School Survey](#)
 - c. [Discipline Incidents up to 11/15](#)
 - d. [Student Panorama CORE Survey About School](#)
 - e. [Student Panorama CORE Survey about Self](#)
2. Review the survey results. It's a lot of information...
3. As you review the results, synthesize the data with these two questions in mind:
 - a. Based on this data, are the safety goals proposed the right ones?
 - b. What strategies can help us meet the proposed goals?

Safety Plan Survey

1. Please click on [this link](#), or access the Safety Plan survey on the agenda.
2. Complete the Safety Plan Survey

Safety Plan Next Steps

1. Support Staff will analyze survey results
2. Sheryl/Edwin will do a similar activity as we did today with different students on campus to get student input
3. Sheryl/Edwin will do a similar activity as we did today with parents to get parent input
4. Sheryl/Edwin will take synthesis of faculty, student, and parent input to School Site Council and get their input
5. Sheryl/Edwin will draft Safety Plan
6. Sheryl/Edwin will hold community meetings to present Safety Plan draft and get feedback
7. Sheryl/Edwin will finalize Safety Plan and submit to DO for feedback and approval