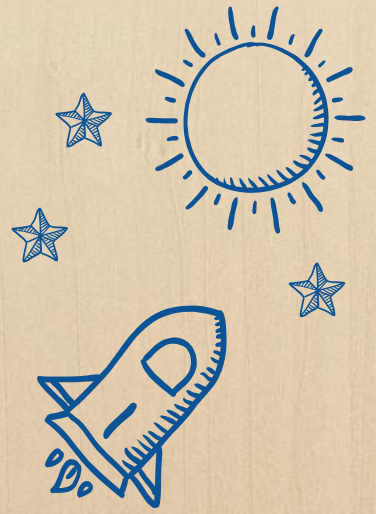


South Woods MS
Grade 6 Parent
Orientation
2025



South Woods PTSA Welcomes You!

Join our email blasts!

Send an email to
SOUTHWOODSPTSA@GMAIL.COM
You will receive weekly email
blasts and timely PTSA
information.

Please include:

- X Your name**
- X Your email address**
- X Name of student(s)**
- X Grade of student(s)**



Please join!

Membership is our single largest fundraiser and proceeds go to programming for our students.

Close your eyes and
picture...

What does
Middle School
look like to you?



Principal

Michelle L. Burget

Assistant Principal

Elizabeth Burke

Assistant Principal

Theresa Berke

Assistant Principal

Jessica Tam

**Meet Your SW
Leadership
Team!**



Peer Leader Co- Advisors

Ms. Stephanie Russell

Ms. Allison deOnis

Ms. Jessica Raguzin

Ms. Tara DiBernardo

The South Woods Peer Leaders

Nihalya, Diya, Michaela, Demi, Emme, Rosa, Eksha, Mehr,
Julianna

**Meet The Real
Experts!**



© LongIslandExchange.com

Community Expectations



Connected Missions:

Association for Middle Level Education:

“An effective middle level curriculum is distinguished by learning activities that appeal to young adolescents and create opportunities to pose and answer questions that are important to them. The curriculum of a successful middle school must be relevant, challenging, integrative and exploratory.”



Syosset's Mission

The mission of the Syosset Central School District is to prepare students to thrive in both the future we imagine and one which may evolve in ways yet to be envisioned.

Things to Know . . .

- ✓ Incoming 6th grade = **252 students.**
- ✓ **We take a Team approach**
- ✓ **Teachers (3-4) on each team** share responsibility for teaching Math/Sci/ELA/SS
- ✓ Teams are **randomized** by computer and reviewed and finalized by counselors
- ✓ The **World Language you selected** is a five year program through Grade 10.
- ✓ **Music choice** remains the same for all three years of middle school.



Developmental Guidance

Your child will have a **Guidance Counselor**

- ✓ Counselors focus on academic success, social-emotional growth, and college/career readiness
- ✓ Will be with your child for all three years of MS
 - Prepares schedules and coordinates transition
 - Gets to know each child
 - Integral part of teaching team
- ✓ **Your Counselor is Mr. Singh.**



Making Connections

Our **Advisory** Program is designed to:

- ★ Foster relationships
- ★ Facilitate communication
- ★ Builds positive school culture

Students “check in” with each other and teacher advisors once each day.

Special “Extended Advisory” sessions focusing on social-emotional learning are planned by a teacher committee and take place 1-2 times per month.





Instructional Program

What are we going to learn?

Grade 6 Instructional Program



Social Studies

- ✓ History, geography, and culture of Eastern Hemisphere.
- ✓ Research, critical thinking skills, and evidence-based argumentation
- ✓ Current events

Science

- ✓ Inquiry approach to science learning
- ✓ Body Systems
- ✓ Forces and Motion
- ✓ Space Systems

English/Reading

- ✓ Balanced approach to comprehension, literacy, and a love of literature
- ✓ Balanced Literacy/Writers' Workshop Model
- ✓ Vocabulary building, writing from sources, and the creative writing process

Math

- ✓ Algebraic and statistical thinking, mathematical reasoning and problem-solving
- ✓ Number sense and operations, ratio and rate, division of fractions, rational numbers (including negatives)

Grade 6 Instructional Program



Explorations and Support

- ✓ Physical Education
- ✓ Computer Applications
- ✓ Music
- ✓ Family and Consumer Science
- ✓ Health
- ✓ Technology
- ✓ Art
- ✓ Instructional Support
- ✓ Math/Reading Lab
- ✓ Project Beyond

Classroom Extensions

- ✓ Local Theatre Excursion
- ✓ Arts Assemblies
- ✓ BOCES Outdoor Education
- ✓ MakerSpace
- ✓ LEGO Robotics
- ✓ Digital Citizenship Lessons
- ✓ Spirit Week
- ✓ Student Council Events
- ✓ Many Many Clubs!!!

A Typical Schedule



	RED DAYS	WHITE DAYS
1	Computers (Project Beyond/Learning Labs)	Music/Chorus/Orchestra/Band
2	Social Studies (Team)	Social Studies (Team)
3	ELA/Reading (Team)	ELA/Reading (Team)
	Advisory	Advisory
4	Skills.comm	ELA/Reading (Team)
5	Lunch	Lunch
6	Physical Education	Technology (Fall)/Family and Consumer Science (Spring)
7	Mathematics (Team)	Mathematics (Team)
8	Science (Team)	Science (Team)
9	Chinese/French/Italian/Korean/Spanish	Art6 (Fall) /Health 6 (Spring)

Warning Bell:
8:01
Periods 1-9:
8:04-2:50
Advisory:
10:16



FAQs

School Day FAQs

- ✓ Ten minute multi-grade level Advisory stays together all three years
- ✓ Nine period day/40 minute periods/4 minute passing time
- ✓ Daily core subject classes; Explorations/support classes meet on alternating “Red/White” days
- ✓ Scheduled Extra Help one morning/afternoon each week
- ✓ Homework serves as reinforcement and practice





Lunch & Recess - Period 5

11:14 - 11:54

**No outside food deliveries
(Doordash etc.) or group orders
permitted!**

- ✓ **Lunch/Recess = 40 minutes**
- ✓ **Prepay for food or bring own lunch.**
- ✓ **Outdoor recess**
- ✓ **Passes for alternate lunch locations and the Library.**
- ✓ **Supervised by teachers and lunch monitors.**



Time to Go!

Dismissal is at 2:50 PM.

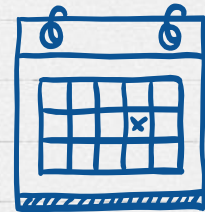
- ✓ Assigned bus only - no guests.
- ✓ Students may only stay after for supervised activities.
- ✓ Car pickup on campus only.



- Two PM bus waves start at 2:55 from the front and side of the school.
- Late buses for clubs/extra help are at 3:45 PM.

Coming Soon!

- ✓ **Optional Summer Orientation Monday, August 25th...**
 - Tour the school
 - Meet classmates
 - Practice reading a sample schedule
- ✓ School supply lists: **This June** (****Sneak Peek****)
- ✓ Course Verifications: **This June**
- ✓ Student Schedules
 - Posted **electronically** before the first day of school
 - Distributed **in print** in school and reviewed on Opening Day



South Woods Contact Information

Attendance Office	516-364-5632
Health Office	516-364-5627
Main Office	516-364-5621
School Counseling Center	516-364-5638
Link:	South Woods MS Webpage

District Contact Information

Athletics	516-364-5749
District Switchboard	516-364-5600
Transportation	516-364-5840

Patience

Respect

Integrity

Dignity

Empathy

