

# Full Day Kindergarten

Council Rock School District  
Full Day Kindergarten  
Community Night  
May 6, 2025  
Newtown Middle School





# Welcome

**Dr. Andy Sanko**  
**Superintendent of Schools**



**Mrs. Nicole Crawford**  
**Director of Elementary Education**





# Tonight's Agenda

## 6:00–6:30 PM: Presentation

- Welcome & Planning Timeline
- PlayLab Introduction
- Readiness Screening Process
- Sample Daily Schedule
- Curriculum Overview
- A Day in the Life of a Kindergartener



## 6:30–7:00 PM: Gallery Walk

- Explore Special Area Classes: Art, Music, Library, PE & STEAM
- Visit the PlayLab
- Registration Support Station
- Meet the Council Rock Education Foundation (CREF)





# Full Day Kindergarten Planning Timelinene



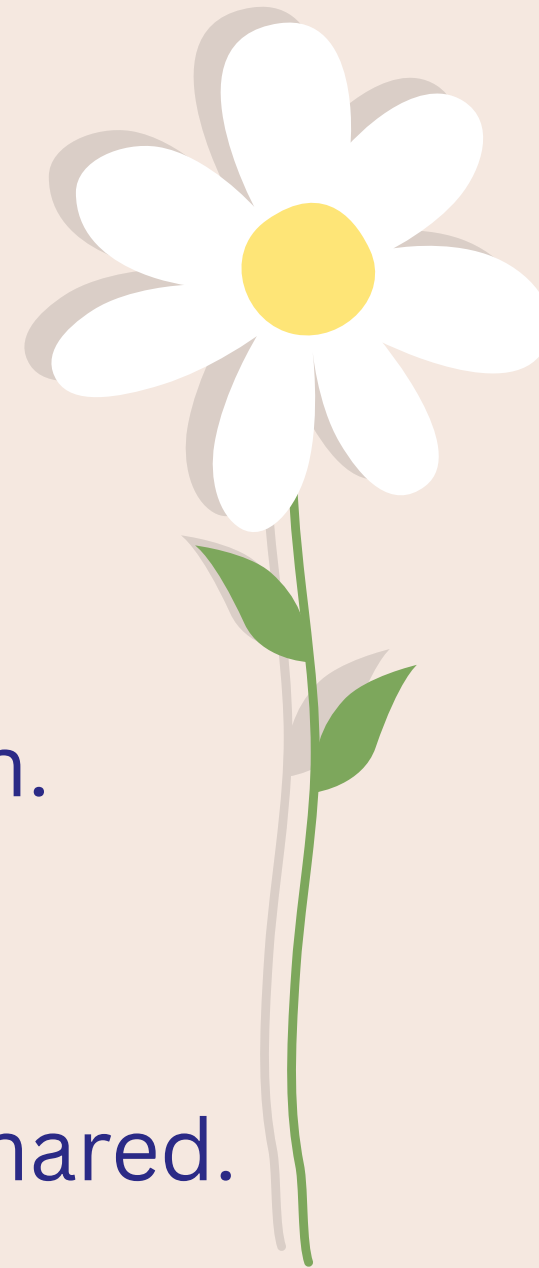
**Winter 2024:** Initial research on Full-Day Kindergarten begins.

**Spring 2024:** Site visits conducted and community survey distributed.

**June 2024:** School Board approves implementation of Full Day Kindergarten.

**July 2024 – September 2024:** Committees established to begin planning.

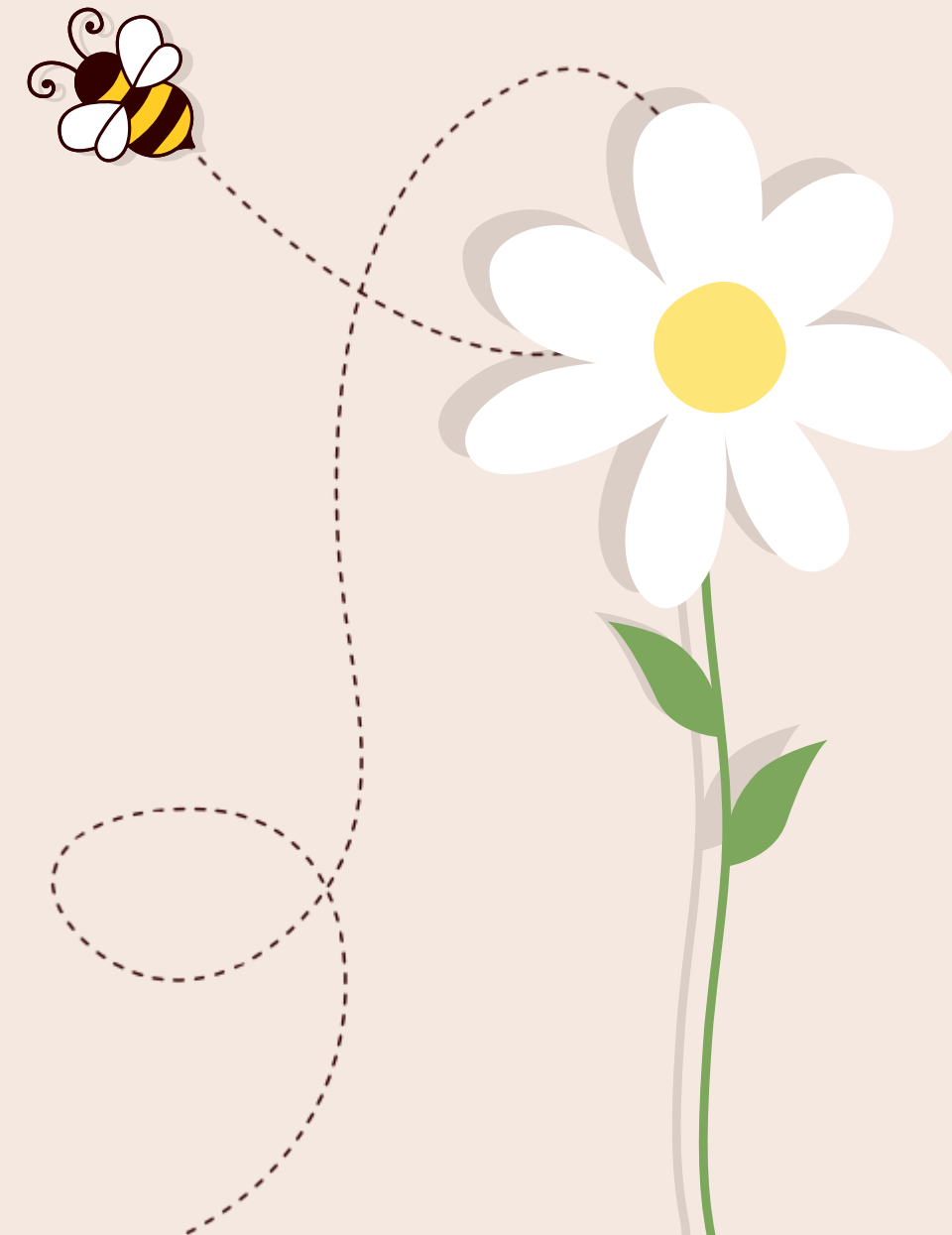
**September 2024 – May 2025:** Ongoing work and regular progress updates shared.





# PlayLAB

- Purposeful play designed to meet the PA Social Studies and STEELS standards.
- Provides students with the opportunity to experience active, joyful, iterative, engaged, and meaningful learning in a social way.



# PlayLAB



- Thematic units designed to promote the 6Cs (Collaboration, Communication, Confidence, Content, Cooperation, Creative Innovation, Critical Thinking).



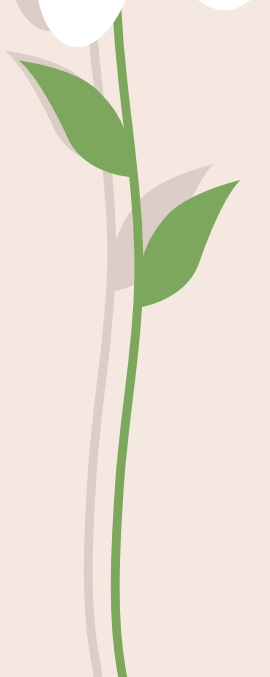
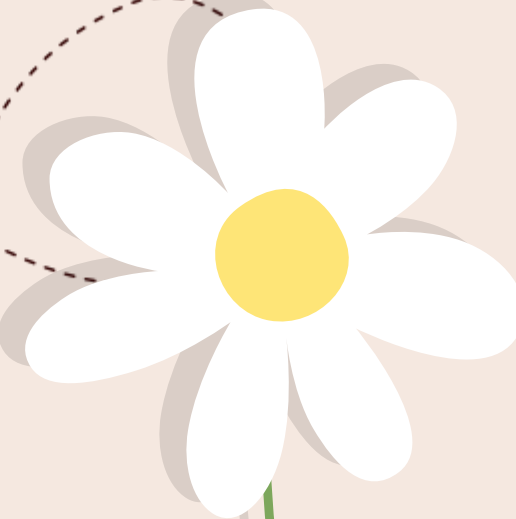
## *KinderGarden*



## *My Community*



## *KinderCakes*





# Readiness Screening Process



**Goals:** Help create balanced class lists and provide insight into each child's readiness.

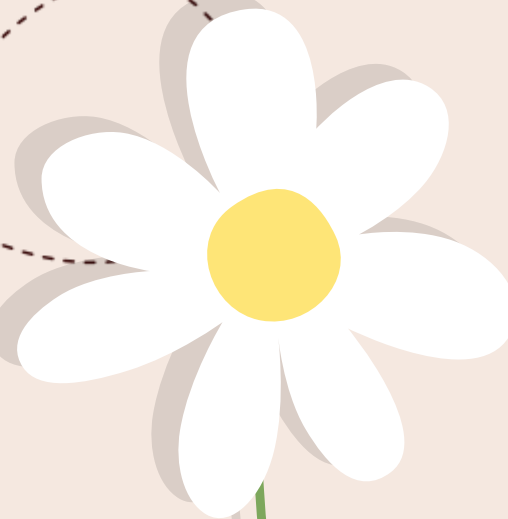
**What It Includes:** English Language Arts, Math, and Readiness screeners administered.

**Student Experience:** Small groups engage in classroom activities.

**Parent Role:** Parents complete a brief rating scale while their child is screened.

**Scheduling:** Families will receive a link to sign up for a screening time in May.

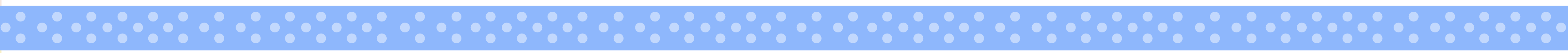
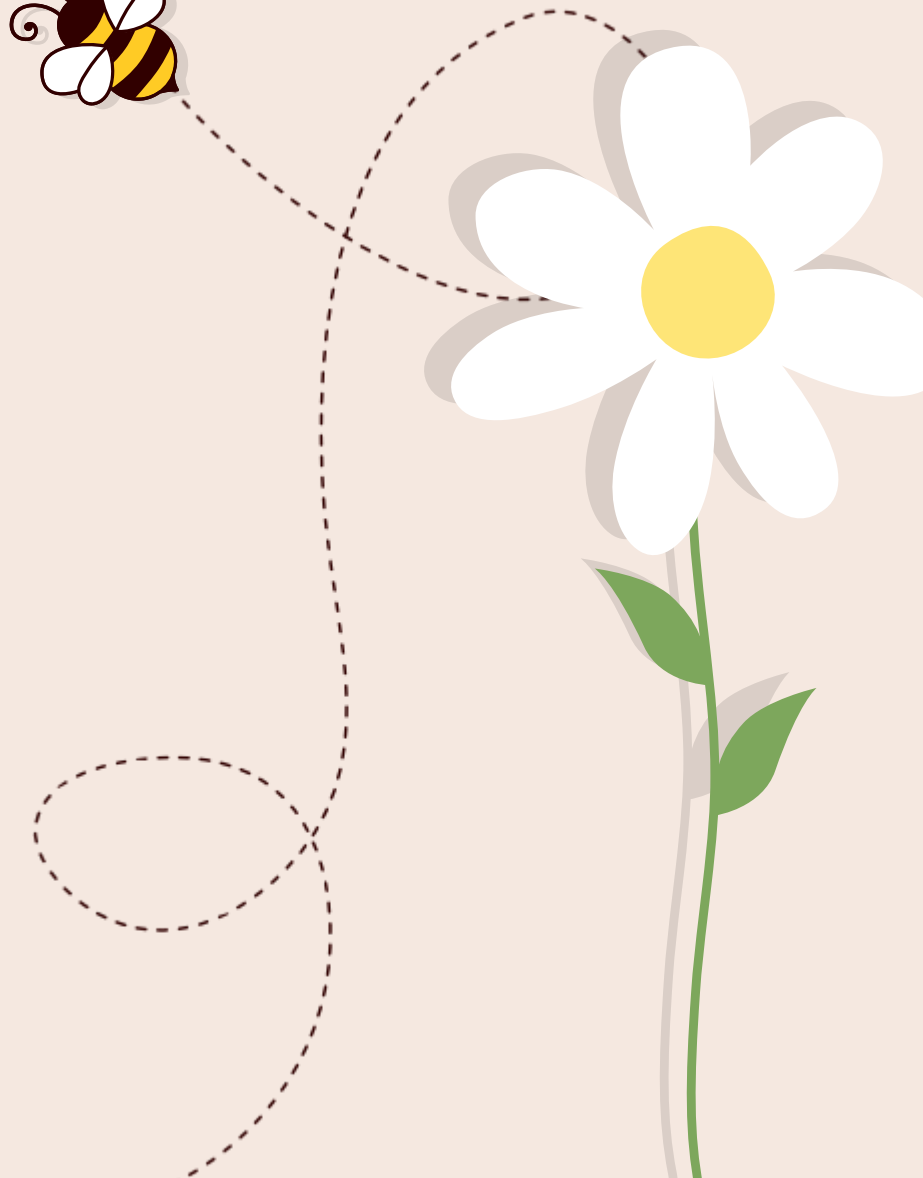
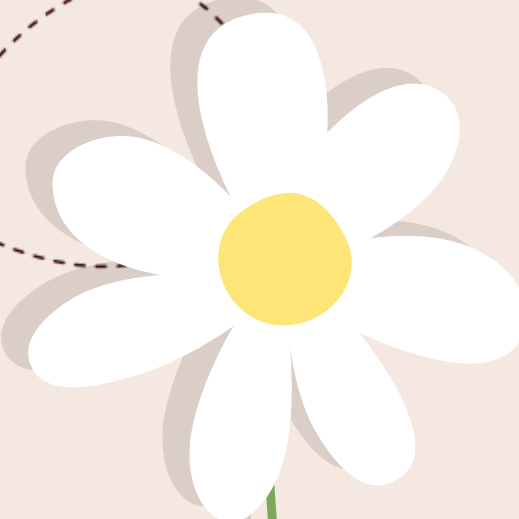
**CR Staff:** Kindergarten teachers, specialists, and support staff will assist.





|  |             |                              |
|--|-------------|------------------------------|
|  | 8:50-9:10   | Arrival                      |
|  | 9:10-9:30   | Morning Meeting              |
|  | 9:30-10:15  | Reading Horizons Whole Group |
|  | 10:15-10:45 | Small Group Reading          |
|  | 10:45-11:00 | Snack/Read Aloud             |
|  | 11:00-12:10 | Math/Number Corner           |
|  | 12:10-1:10  | Recess and Lunch             |
|  | 1:10-1:45   | PlayLab                      |
|  | 1:45-2:15   | Intervention                 |
|  | 2:15-2:30   | 2nd Recess                   |
|  | 2:30-3:00   | Writing                      |
|  | 3:00-3:40   | Special                      |
|  | 3:40-4:00   | Pack up/ Dismissal           |

# Sample Daily Schedule

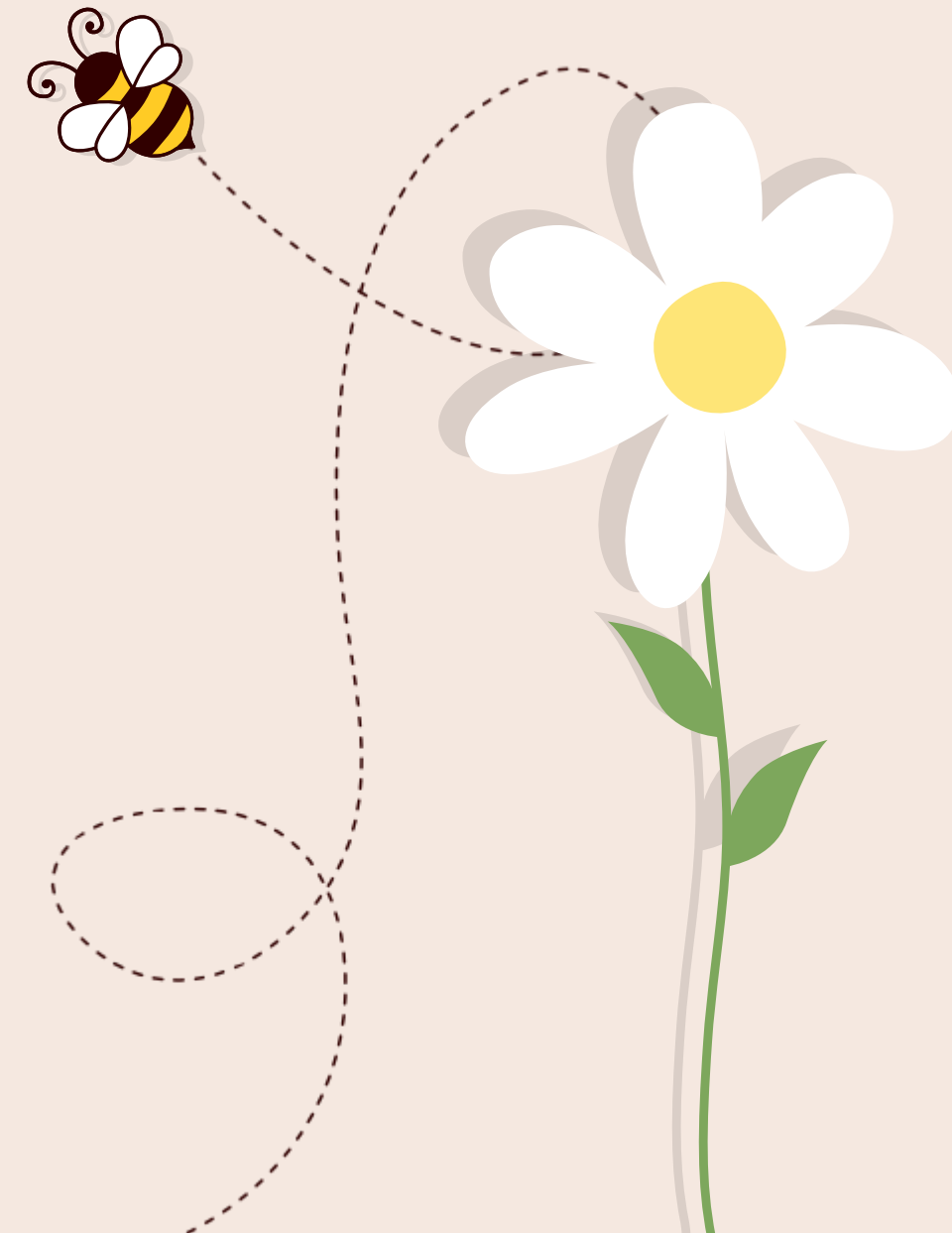




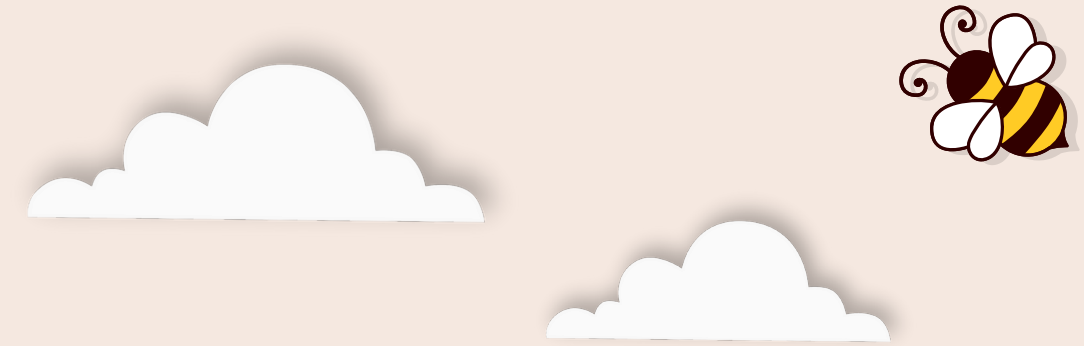
# Curriculum Overview



- PA Standards for Early Childhood (KDG) and Academic Content Standards.
- Use of universal screeners, interventions, and progress monitoring.
- Focus on whole child with opportunities in developmentally appropriate physical, social and emotional learning.
- Creation of new courses (PlayLab- Science & Social Studies) and expansion of existing courses (English Language Arts, Math)
- All Specials- Art, Music, Physical Education, Library & STEAM.



# English Language Arts



- Students will engage in systematic explicit instruction in reading using Reading Horizons as the core resource.
- Reading instruction will focus on foundational skills and listening comprehension.
- Writing instruction will focus on composition skills.
- Speaking and listening will be embedded in lessons and play lab throughout the day.



# English Language Arts

## Phonemic Awareness

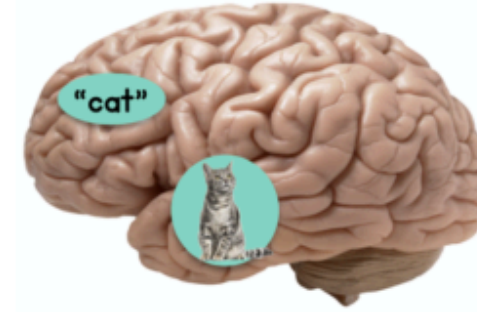


# English Language Arts

## Phonics and Writing

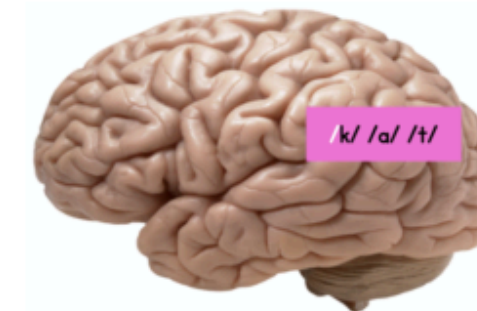


Pronunciation and meaning of "cat" is already familiar to the child.



"cat"

We need to help that student pull apart the sounds in that word to identify the exact order of the individual sounds.



/k/ /ā/ /t/

Then, those sounds are connected to the correct symbols (letters). By examining the order of the letters and connecting to the sounds, they are beginning to map this word.



c



a



t

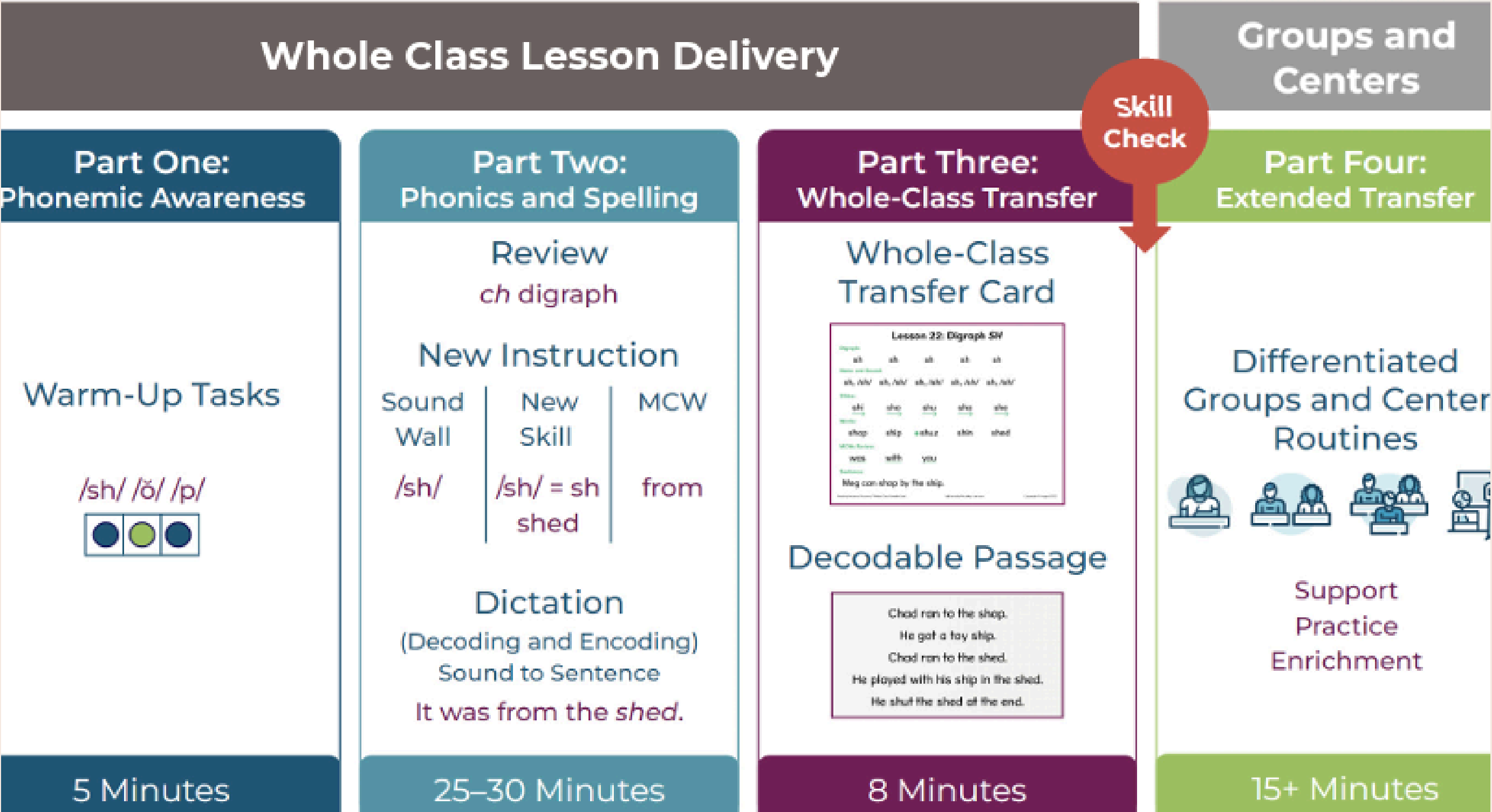
With orthographic mapping, the *pronunciation* of a word or word part is broken down into its *phoneme* (sound) parts, then LINKED to *strings* of *letters*. In other words, the **spelling** of *cat* becomes BONDED to the pronunciation of cat.

SARAH'S Teaching



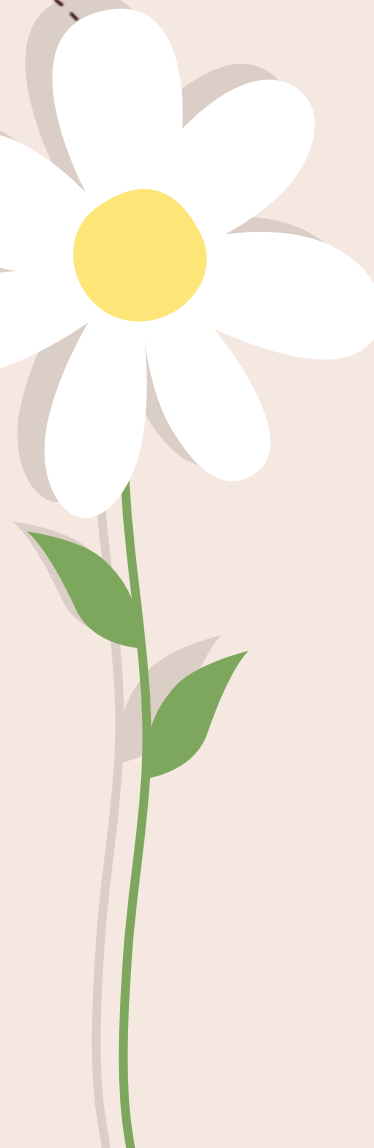
# English Language Arts

## Reading Horizons Instructional Routines



# Math

Students actively engage in learning activities designed to develop understanding of number and shape.





# Math

Our primary curricular resource is *Bridges in Mathematics*.

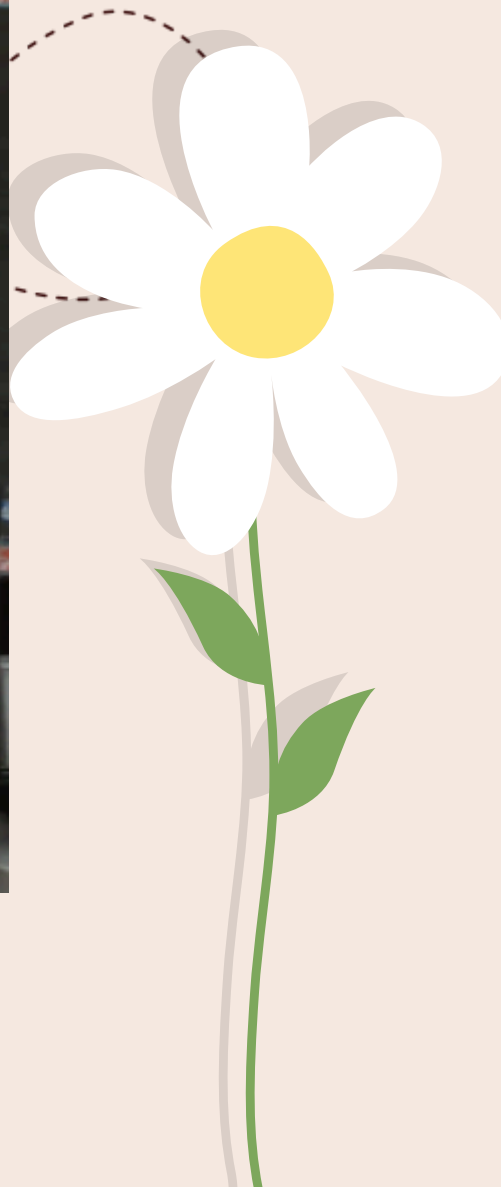
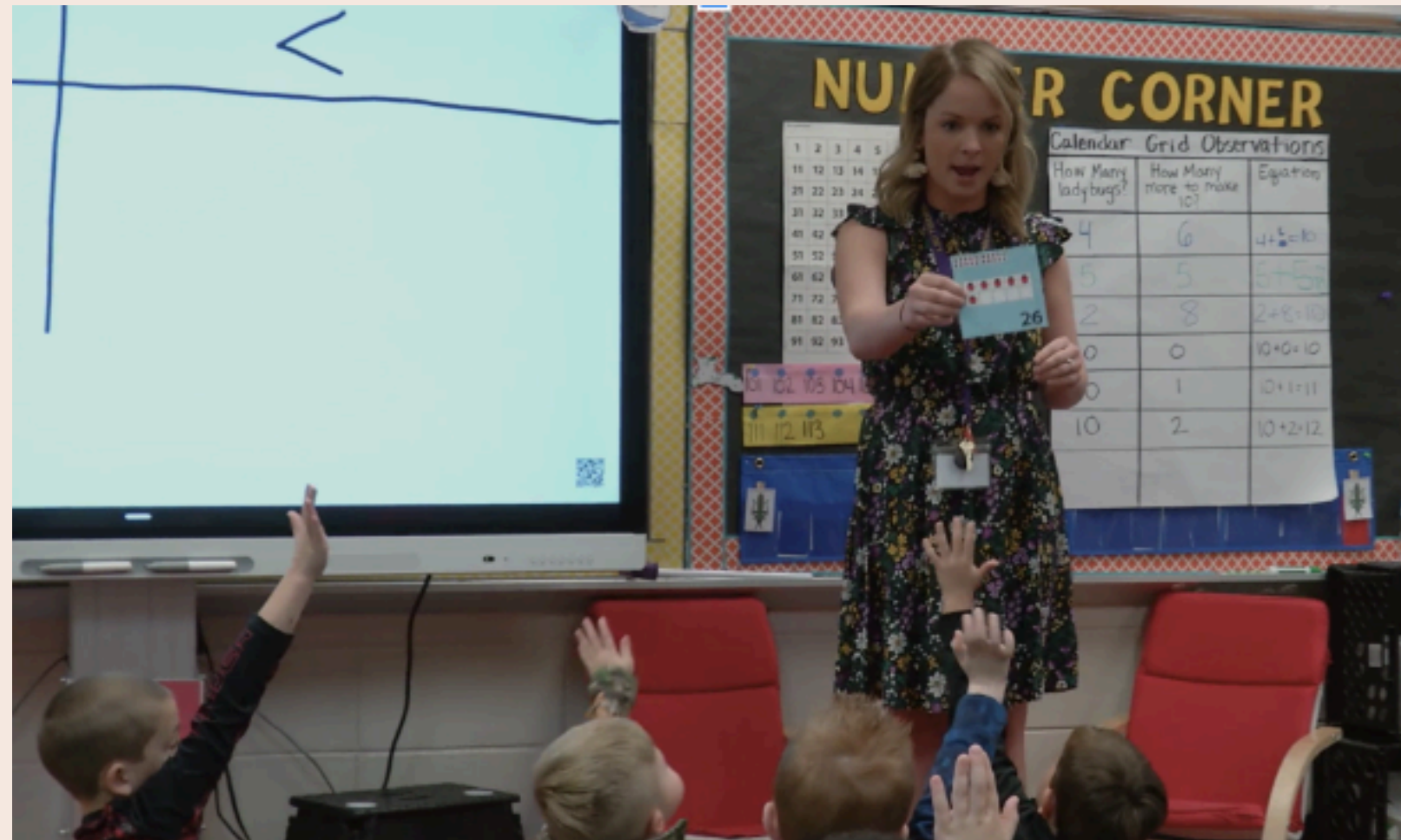
Our math classrooms provide for a combination of whole-group, small-group, and independent activities.



# Math

The learning activities are a blend of direct instruction, structured investigations and open exploration.

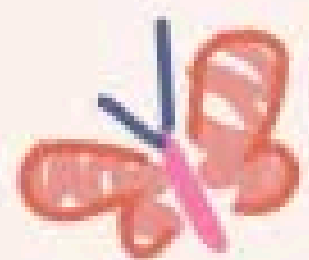
These experiences include: Problems & Investigations, Work Places, & Number Corner.



# A Day in the Life of a CR Kindergartner



Made for kindergartners



# Gallery Walk

