



HIGH QUALITY PRE-KINDERGARTEN FAMILY ENGAGEMENT PLAN

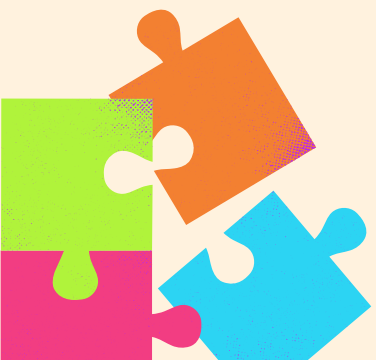
In adherence with the Texas Education Agency's House Bill 3 (HB3)
Components of a High Quality Prekindergarten Program (HQPK)





INTRODUCTION: FAMILY ENGAGEMENT IN ECISD

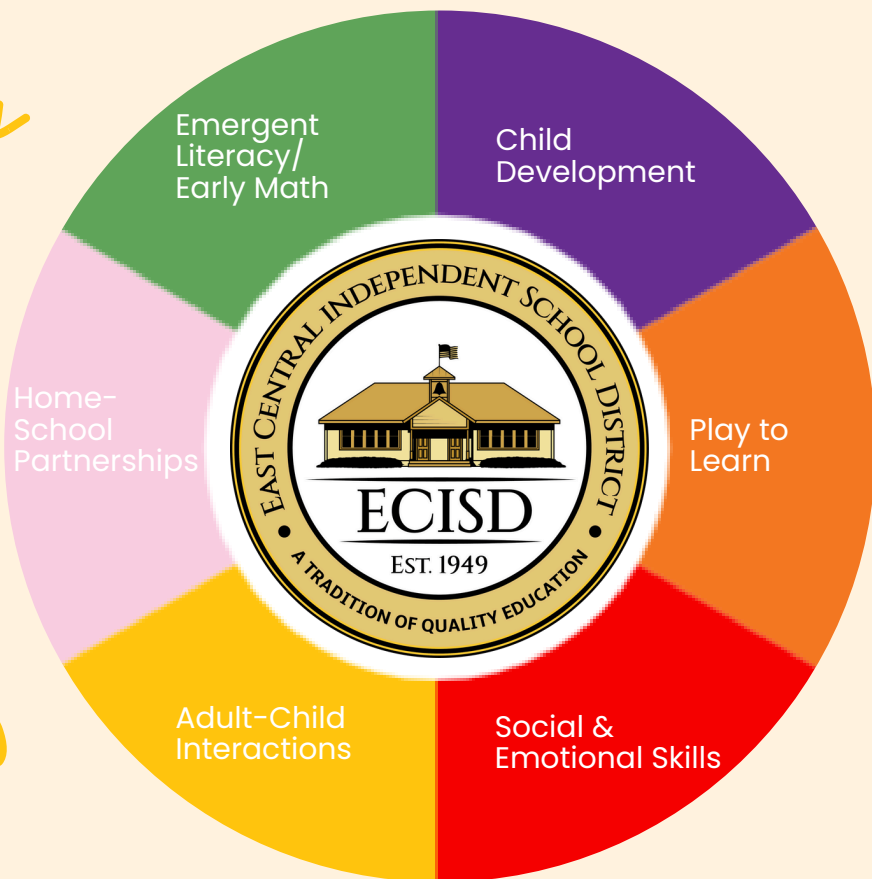
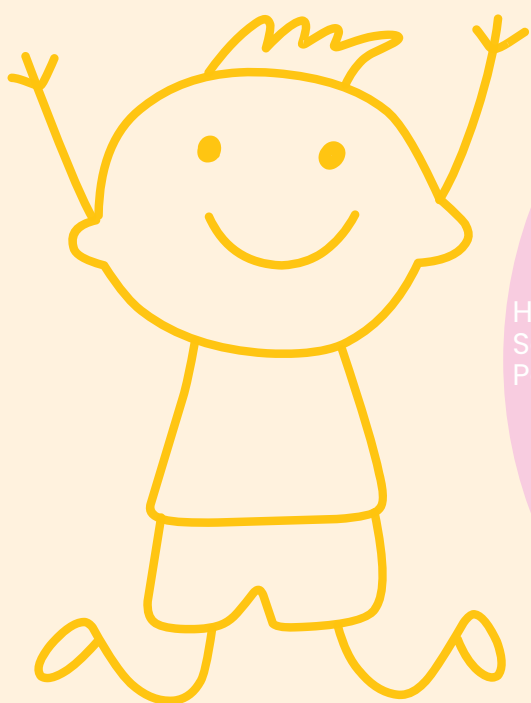
East Central ISD is dedicated to welcoming and celebrating all families. We believe that when families are involved, children feel more connected to their roots, grow confidently, and thrive in their learning. By working together as partners, we can help children build a strong start in school, support their growth, and set them up for lifelong success. Our effective family engagement plan creates a foundation for collaboration as mutual partners. From the earliest years, families' voices and involvement make a difference, and we're here to support families every step of the way.



East Central ISD Early Learning Mission



East Central ISD provides an inclusive high-quality early learning program that meets the developmental needs of young children while preparing them for success in future schooling and life. By valuing and respecting the needs, languages, and cultures of all students, families, staff, and the community, we ensure all children have an equitable start to their educational journey.



CORE BELIEFS	
Components	We Believe:
Child Development	Every child develops at an individual rate and possesses unique characteristics, regardless of family language, background, culture, special needs, socioeconomic status, experience, or ability.
Play to Learn	Children are active learners and learn through purposeful child-directed play.
Social & Emotional Skills	A focus on the whole child builds strong social and emotional competencies leading to a sense of self, student agency, and appropriate decision-making.
Adult-Child Interactions	Positive, intentional adult-child interactions support social-emotional, academic, and language development as well as children’s sense of self.
Home-School Partnerships	Responsive and respectful family engagement supports a child’s self-identity, development, home language, and academic success while actively communicating and involving families as educational partners
Emergent Literacy/ Early Math	Language, literacy, and math learning experiences are based on student data and incorporated throughout the classroom, day, and program.



Component 1:

FACILITATING FAMILY TO FAMILY SUPPORT

ECISD ACTIONS:

ECISD fosters a welcoming school environment that enhances family-to-family support, offering activities that build positive, productive relationships where families can learn from one another. Each campus provides a safe space that encourages family engagement, addressing various barriers to family involvement.

Opportunities for parents/guardians to engage in facilitating family to family support include:

- Meet the Teacher Night which facilitates family-to-family interactions and networking
- School Open House designed to be family-friendly, culturally relevant, and welcoming
- Math/Science and Family Literacy Night which facilitates school-to home learning opportunities
- Presentations are in parent's language
- Parent teachers Association (PTA) meetings
- School and classroom volunteering
- "Puentes" al Futuro: Family Engagement, Education & Advocacy Program

HQPK
1





Component 2:

ESTABLISHING A NETWORK OF COMMUNITY RESOURCES

ECISD ACTIONS:

ECISD is committed to building a network of community resources through strategic partnerships. We work closely with our local community college to support educational advancement for families, maintain strong relationships with city-wide organizations to promote lifelong learning for both adults and children, and actively inform families about ECISD resources, outreach programs, and other community services that enhance learning and well-being.

ECISD collaborates with a variety of organizations to build and maintain a network of community resources:

- Communities in Schools: Parent and Child Emotional Wellness provides clinical counseling and supportive guidance to students and families
- The San Antonio Food Bank conducts food distribution events on our campuses
- ReadyKidSA
- earlymatters San Antonio: connecting families with ECISD PreK enrollment information
- PreK4SA
- ESC Region 20
- Texas A&M San Antonio
- San Antonio Wolf Trap: Institute for Early Learning Through the Arts





Component 3:

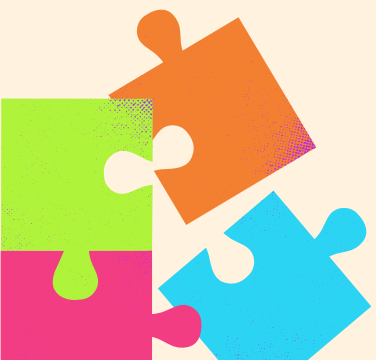
INCREASING FAMILY PARTICIPATION IN DECISION MAKING

ECISD ACTIONS:

The ECISD Early Childhood Program, alongside ECISD campuses, provides leadership opportunities at both district and campus levels to empower families as their child's first teacher and advocate. By using intentional strategies, we aim to strengthen family involvement in decision-making processes.

ECISD Pre-Kindergarten families will have the opportunity to share their input through :

- Campus climate surveys, beginning, and end of year surveys, surveys about future programs, surveys about their needs, surveys about family engagement, etc.
- Parents will be included in the District Improvement Committee, Family and Community Education Advisory Committee as well as Campus Site-Based Committees
- Talking Points
- Parent Teacher Association / Organization





Component 4:

EQUIPPING FAMILIES WITH TOOLS TO ENHANCE AND EXTEND LEARNING

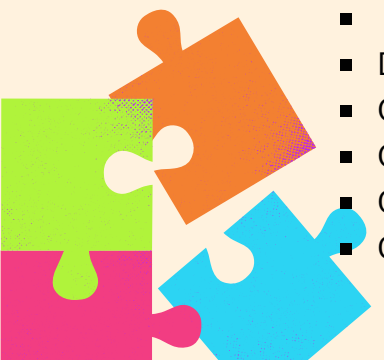


ECISD ACTIONS:

ECISD supports families in extending learning at home by providing Pre-K resources aligned with our core beliefs, curriculum, and Texas Pre-Kindergarten Guidelines. We communicate each child's development, language, and academic progress, fostering strong educational partnerships with families.

ECISD Pre-Kindergarten families are equipped with the following tools to enhance and extend learning:

- **Reflection Sciences** personalized activities and digital games shared to build students' **Executive Function** and **Social-Emotional Learning** skills, focusing on cognitive development areas like reasoning and spatial skills.
- Support the **“Puentes” al Futuro: Family Engagement, Education & Advocacy Program**
- Conduct individual family conferences at the end of the first 9 weeks with every Pre-Kindergarten and Kindergarten parent to discuss their child's academic progress.
- Encourage regular communication on how to support children's learning and development
- Assist families in creating goals for their child and help in obtaining those goals.
- Set expectations/priority for teachers to share at-home activities
- Offer parent training on relevant topics, so families can support their child's learning and development.
 - Facebook Live Events
 - District Webpage [Pre-Kindergarten](#)
 - Campus Family Nights
 - Chef (Culinary Health Education for Families)
 - OLE (Outdoor Learning Environment)
 - Quarterly Newsletter via Talking Points





Component 5:

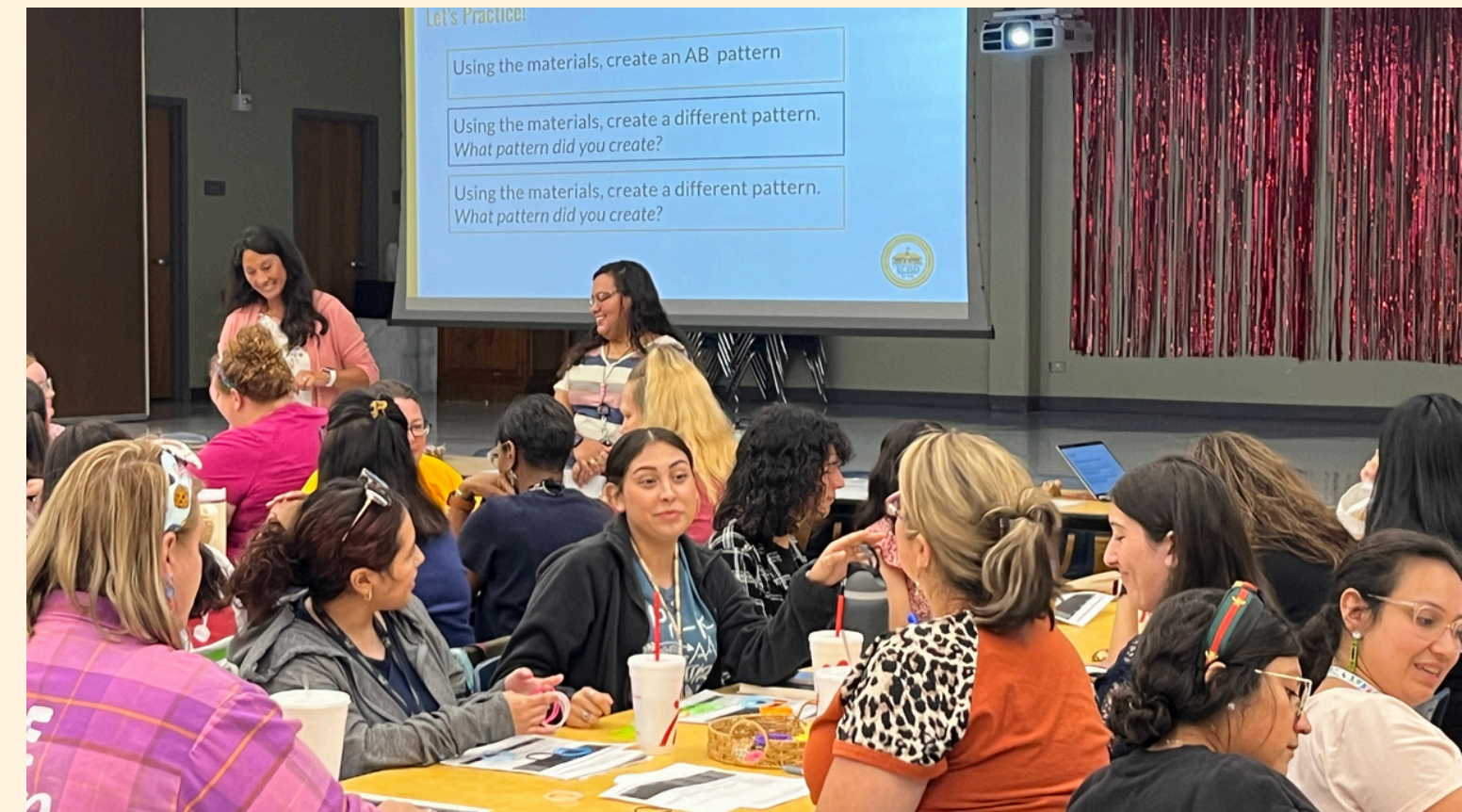
DEVELOPING STAFF SKILLS IN EVIDENCE-BASED PRACTICES THAT SUPPORT FAMILIES

ECISD ACTIONS:

ECISD provides ongoing staff development for administrators, district specialists, campus-based instructional coaches, teachers, and instructional assistants. Training occurs throughout the year, including new teacher orientation, curriculum days, and campus-based PLCs. This professional development helps staff build skills in evidence-based practices that support families in helping their children meet learning benchmarks.

ECISD staff attend trainings including, but not limited to:

- Strengthening Early Education through Data-Coaching Program (SEED Program) ESC Region 4: Ensuring efficient data utilization at the district-level to drive early childhood instruction.
- Early Mathematics: Articulate the developmental progression of math development in early learners
- CIRCLE Assessment and Reporting: How to Access and Print the Student Report for Parents English/Spanish
- Accessing and Using the CLI Engage CIRCLE Family Activity Collection
- CHEF:Culinary Health Education for Families teaches children and families basic nutrition and practical cooking skills and healthier eating habits
- Provide training on family engagement strategies and services to teachers.
- Provide training on how to address difficult conversations when addressing their child's learning.
- Identify resources from external partners (Pre-K 4 SA, etc.)





Component 6:

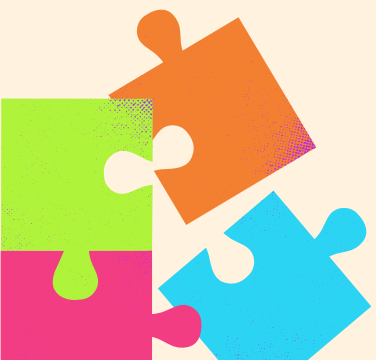
EVALUATING FAMILY ENGAGEMENT EFFORTS AND USE EVALUATIONS FOR CONTINUOUS IMPROVEMENT

ECISD ACTIONS:

ECISD utilizes the results from family engagement assessments to drive continuous improvement through targeted strategies. By analyzing assessment data, the district identifies areas for growth in family involvement and tailors initiatives to strengthen communication, enhance partnerships, and foster a supportive learning environment.

ECISD solicits feedback and suggestions from families through multiple channels including, but not limited to:

- Annual surveys (Thought Exchange) to all stakeholder on the effectiveness of the program and to gather feedback on topics of interests.
- Registration & Participation in “Puentes” al Futuro: Family Engagement, Education & Advocacy Program
- Feedback Surveys from campus events
- PTA Council





ECISD CURRICULUM & INSTRUCTION EARLY CHILDHOOD EDUCATION

