



Vintage Feel. Modern Appeal.

PUTNAM

BUSINESS INCENTIVES • COMMUNITY EVENTS • SHOPPING & DINING • EDUCATION & HEALTHCARE

Connecticut

A BUSINESS & COMMUNITY GUIDE



Main Street, Downtown Putnam

85 main



“An outing to 85 Main can make you feel like you’ve been on vacation”

-Worcester Telegram & Gazette



American Fusion Cuisine
fresh, local, organic, sustainable,
artistically driven ingredients

Casual Fine Dining
inviting & contemporary bar atmosphere,
seasonal outdoor dining

**JOIN US FOR
HAPPY HOUR 4-6PM
Wednesday Nights - Bar Only**



The Bulletin
1st Place Best Sushi
2018, 2019, 2020

ZAGAT RATED 2016
★★★★☆

85 Main St. Putnam CT • www.85main.com • 860.928.1660

Welcome

TO THE TOWN OF PUTNAM!

Welcome...nestled in the heart of NORTHEAST CT, also known as Scenic Northeast, you will find the town of Putnam. Originally a quintessential New England mill town, Putnam is still making noise. The factories may be quiet but we have come alive. Revitalizing our Downtown District has been and continues to be a focus of development and vibrancy for both residents and visitors alike. Putnam boasts of centralized and innovative infrastructure including a 3-mile River Trail with a Canoe Launch Park area, Dog Park, Farmers Market Pavilion, Story Walk Kiosks and even a Bicycle Repair Station. Our Trail ends at the Regional Hale Family YMCA, the largest such facility in the State of Connecticut.

The economic climate of Putnam is strong, thriving and continues to expand. Centrally located among the Boston, Providence, Worcester and Hartford markets, the town is conveniently accessed by Interstate 395 and US Route 44. Our Technology Park will contribute to the success in attracting business technology in the national and global markets. Putnam's priority for the past term has been the long-needed safety improvements of our infrastructure including: bridges, road paving and sidewalk rehabilitation.

Restaurants, pubs and breweries abound, with alfresco dining taking center stage. The Putnam Business Association and the

Putnam Recreation Department continue to provide events and celebrations that bring visitors from all over New England. A long restored and preserved playhouse offers current shows as well as arts and cultural venues. Art galleries, antique marketplaces, specialty shops and boutiques line the streets hosting unique gifts and treasures for all ages. No one could market our community better than *Boston Magazine's* designation as "One of the Best 15 Small Towns to Visit in New England."

Putnam constantly strives to be a better place to live, work, play and grow. Our success? Well it's really all about passionate people giving to their community and creative partnerships working collaboratively for everyone's best interest. It's about taking an active role in shaping Putnam's future and making sure that the town is both strong and vibrant by embracing and sustaining the community spirit that defines us.

Sincerely,

Barney Seney

Barney Seney, Mayor

Putnam

Town of Putnam, 200 School Street, Putnam, CT • www.putnamct.us • 860.963.6800

Municipal offices include a new library, community center and the Aspinock Historical Society

24 miles from Providence • 43 miles from Hartford • 53 from Boston • 138 from New York City



This publication is
Published & Distributed by:

GDP

GLOBAL DESIGN & PUBLISHING LLC

860-382-3832 • kelly@gdpublishing.com
www.gdpublishing.com

All design and text is provided by Global Design & Publishing, LLC in collaboration with **The Town of Putnam, Connecticut**. All text and images have been carefully compiled for this publication. However, we do not guarantee the accuracy of the content. **Photography by: Jim Tourtellotte** (additional photos provided by local businesses). **Top Right Cover Photo courtesy of Block 134**. Copyright ©2025, Global Design & Publishing, LLC. Any reproduction without our written permission is prohibited.

Putnam *Today*



Putnam is the community we know today because of the Quinebaug River and Cargill Falls. Grist mill and blacksmith operations grew up there before 1800, when textile manufacturers from Rhode Island purchased the site for a factory village. The water flowing in the Quinebaug River powered new jobs, new houses, stores, and related businesses. This picturesque cascade is the key to future development. Sturdy business blocks lining the downtown streets that speak to the commerce of an earlier era now form the building blocks for Putnam's redevelopment as a destination for dining, shopping, and entertainment.



The renovated Lofts at Cargill Falls (the former Hale Manufacturing Company) office residential and commercial space close to downtown. Kennedy Drive, home to professional offices and manufacturing businesses, links to the Technology Park adjacent to Interstate 395. Plans for redevelopment of Providence Street will continue to expand Putnam's walkable footprint. Threaded through this area is the Quinebaug River with its River Walk.



When Putnam is fully linked to the Airline Trail, Connecticut's horizontal state park through the old railroad right of way, the hiking trail system will extend to the Massachusetts state line and beyond. Hikers will join everyone else who has already discovered that Putnam is an exciting destination.

Putnam Economic and Community Development

The advancement of Putnam as a place to live and do business are the shared missions of the Department of Economic and Community Development, Economic Development Commission and the Redevelopment Agency. The team works closely with local business associations, current and aspiring businesses, community members and like-minded neighbors so that dreams can become reality...and sustainable. **Mary Ann Chinatti is Director of Economic and Community Development/Redevelopment.** *“Putnam is a great place to live and work,” she notes. “Together, we provide the leadership and guidance to enrich the experiences offered to the community, its businesses and our visitors.”*

The Mission:

The Putnam Economic and Community Development Commission supports and encourages the commercial, industrial, agricultural, community and civic well-being of Putnam by supporting existing enterprises and attracting desirable and appropriate development while fostering a strong local economy and better quality of life for our neighborhoods.

Welcoming Growth & Change

Putnam’s administrative team recognizes that the legacy of the past is a tremendous opportunity. Emblematic of its optimism is the municipal complex at 200 School Street (the intersection of U.S. 44 and Providence Street--CT Route 171), completed in September 2021. All municipal services are located in one fully ADA-compliant building: all town offices, including the Office of Economic and Community Development, Putnam Public Library, Aspinock Historical Society, and a community center with spacious meeting rooms. The main hallway is also a gallery where community artists show their work in a rotating series of exhibitions. Recreational green space displaced by the Municipal Complex has been transferred to

other town-owned property closer to existing sports fields.

Union Square, with its revitalized railroad station, a mini-park, and the Boxcar Museum, is also home to lively venues where local brews and unique dining are on tap. Alfresco dining is a seasonal feature.

Manufacturing and technology businesses are welcomed with dedicated development sites in the Putnam Industrial Park and Regional Technology Park. Commercial opportunities are featured on the department’s website. Every ribbon-cutting is an event to celebrate.

A big Putnam welcome to McGee Toyota! Relocating from Dudley, MA, to 88 Providence Pike (Route 44), this dealership offers a large inventory of new and used vehicles. New and returning vehicle and service customers in the Tri-state area are wowed by the gorgeous and efficient purpose-built McGee Toyota. Open Monday through Saturday.



Putnam invites a second look. It is a community building for the future in a place that is steeped in history and rich with opportunity.

Future Goals



ECONOMIC DEVELOPMENT GOALS

- Expand and diversify the commercial and industrial tax base
- Recruit new business
- Nurture and retain existing businesses
- Promote Locally Grown business enterprises
- Promote entrepreneurialism, social, and economic equity

COMMUNITY DEVELOPMENT GOALS

- Manage growth and change within a strategic plan to achieve the best possible sustainable outcomes for development
- Develop integrated growth that expands the vibrant Downtown to include the Providence Street area
- Enhance residential and commercial areas

REDEVELOPMENT AGENCY GOALS

- The greater Downtown area will remain the community center offering a place for social contact, governmental, arts/cultural, and economic activities
- Continue to expand Putnam’s business footprint
- Encourage infill development in prime redevelopment areas
- Market and promote historic mill preservation and redevelopment
- Incorporate expansion of walking trails and outdoor experiences in messaging



Tax Incentive Program

- Open to businesses located within the Enterprise Corridor Zone. Call the Economic Development office to see if your business location is listed at 860-963-6800 Ext.201.
- The Town offers a deferral of increases in property tax within the designated Rehabilitation Area based on improvements that increase the value of the property.

Putnam's Recent Accomplishments



Recent Accomplishments

- New sidewalks and paved city parking lots developing infrastructure
- Celebrated the opening of the Lofts at Cargill Falls
- Wayfinding Signage for Putnam and Beautification Accents
- Farmer's Market Pavilion and Saturday Farmer's Markets
- Senior Market Voucher program funded by CT Dept. of Agriculture
- StoryWalk stations along the River Trail offer a changing library of stories and the gift of literacy in the outdoors to children and adults
- Sculptures and outdoor mural enhance existing public art
- Accepted donation of portion of 49 Front Street adjacent to Union Square

- Funding granted through CT DECD Office of Brownfield Remediation and Development for assessment of former Putnam Foundry property to prepare for redevelopment as mixed-use housing and commercial space.
- Funding granted through CT DECD Office of Brownfield Remediation and Development for remediation of hazardous building materials at former Belding Mill, 107 Providence Street, in preparation for redevelopment.

On The Agenda

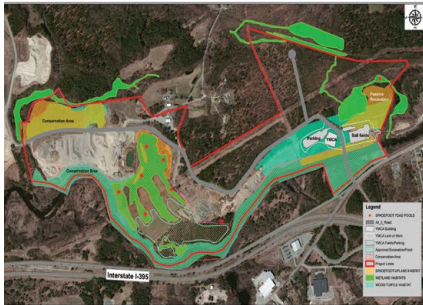
- Expansion of the Kennedy Drive parking lot
- Seeking grants to expand trail system to connect Putnam and Thompson

- trails, extend River Trail to Killingly, and link Airline Trail between Pomfret and Putnam
- Seeking grants for revitalization of Providence Street
- Seeking grants to construct sidewalk to run from Kennedy Drive to Day Kimball Hospital and connect School Street to WalMart
- Partnerships to add landscaping and gardens throughout Downtown, including recently donated Union Square Courtyard
- Update the Putnam Plan of Conservation and Development, as mandated by State of Connecticut
- Seeking NECOG grant for transportation alternative
- Seeking grant funds for renovation of the municipal sports complex



The Quinebaug Regional Technology Park

It is not a coincidence that the Quinebaug Regional Technology Park is also the home of the Hale YMCA. The community response to the Y has shown that the community commitment to work-life balance is strong.



The Quinebaug Regional Technology Park (The Q) has many things going for it. Located at Exit 45 on I-395 that intersects with Kennedy Drive and Park Road, it is linked to the rest of New England and beyond, and also to Putnam's Main Street and more. The Q is the southern anchor of Putnam's business core.

The site has direct highway access via I-395 to Worcester (20 miles), Providence (30 miles) and Hartford (50 miles). Boston is 74 miles north and New York 174 miles to the south. Approximately 267 acres, the technology park represents a regional investment and revenue-sharing association of the Towns of Putnam, Pomfret, Brooklyn and Scotland. Its infrastructure, a dedicated bridge and Technology Park Drive (28' wide) connect the lots with Kennedy Drive. At presents, lots remain and for the future, additional acreage is approved for subdivision.

The Hale YMCA Youth and Family Center

This stunning contemporary building in a park-like setting has indoor facilities that include pools and gyms, along with a robust schedule of exercise and wellness programs. The activities are designed for youth and adults, and include individual and group

fitness, swimming, and other popular team sports. Outdoor activity programs experiences include the on-site summer day camp—Camp Cutler at the Y—and at a pristine lakeside setting in nearby Woodstock that offers traditional camp activities. With strong community support, Hale YMCA has rapidly grown into one of the largest and most successful branches of the YMCA in Connecticut. Visit www.ghymca.org for complete



listings of Y programs and services. Visit www.ghymca.org for complete listings of Y programs and services.

Cargill Falls Mill Project

In the heart of Putnam, the Lofts at Cargill Falls Mill are fully occupied and now have a waiting list. The revitalized site, where Connecticut's textile industry was born, blends classic mill architecture and landscaping with the comfort of modern living. The 82 spacious one- and two- bedroom rental apartments have stunning hardwood floors and over-sized windows that provide natural light and scenic river views. It is the first sustainable, mixed-use development in Connecticut with its own hydroelectric power plant. www.cargillfallsmill.com

Riverfront Renaissance

Rotary Park, Murphy Park, the St. Marie-Greenhalgh Sports Complex, adjacent to the new Owen Tarr Field, and Rawson Field are all locales for outdoor recreation in Putnam. Simonzi Park includes a trailhead for paddlers on the Quinebaug and Little Rivers. Walkers and runners enjoy the scenic River Trail. Community team sports include NECONN Soccer, softball leagues,

and WPTP Junior Football. For schedules and contact information for seasonal youth and adult leagues, go to www.putnamct.us/departments/parks-and-recreation.

The bandstand at Rotary Park is the venue for outdoor concerts, often in conjunction with either the River Fire or the Fourth of July fireworks.

Road Races

First 'o the year is the *O'Putnam a 5K* race that starts and finishes in downtown Putnam with a run along the Putnam River Trail along the Quinebaug River passing Cargill Falls. This is an event of the Hartford Marathon Foundation and takes place on the Sunday before St. Patrick's Day, hence the Irish theme.

Tackle the Trail is a marathon for individuals and relay teams that starts in Windham or Pomfret (half-marathon) and ends at Putnam's Hale YMCA. Proceeds from this race support student aid at Quinebaug Valley Community College in nearby Danielson. ("The Trail" is the former Airline railbed, now the Airline Trail State Park.)

The Day Kimball Healthcare Walk and Race held in August benefits the Northeast Connecticut Cancer Fund. This event includes a five-mile walk/run and a half-mile fun run for kids. This is a longstanding community event that supports Day Kimball Healthcare.

**"Voted one of the best 15 towns
to visit in New England."**

- Boston Magazine

Explore & Discover Putnam

Regional Technology Park • Centrally Located

Arts & Cultural Hub • Shopping & Dining • Theater & Live Entertainment

Putnam Economic & Community Development Commission

Putnam Redevelopment Agency

200 School Street • Putnam, CT 06260 • maryann.chinatti@putnamct.us

WWW.PUTNAMCT.US • 860.963.6800 Ext. 201

Main Street & Putnam's *Downtown Crossroads*

The downtown footprint might be small, but its historic buildings offer a lively mix of things to do and places to eat. Dining, arts, retail shops, and personal services draw visitors to Putnam, northeast Connecticut's commercial hub. Parking is convenient and free; downtown signage is clear; its scale is comfortably walkable. The lively Main Street scene welcomes visitors and residents.



Historic Downtown

From bustling Union Square to the Post Office, **Putnam's Main Street** is a vibrant mix of restaurants and stores. **Antiques Marketplace** with its three floors to explore is a longtime highlight of the area, along with other antiques shops. With its unique retail offerings and a wide range of dining and entertainment venues, Main Street is the beating heart of Putnam.

Outdoor patio dining, long a feature of Putnam's restaurant scene, has been expanded into a second downtown block, extending the lively atmosphere from lunch into the evening. A stroll down the hill leads to the Quinebaug River, an appealing place to walk—or run—with views of **Cargill Falls**, the water, and historic mill buildings. It's a place to have lunch and, when scheduled, enjoy entertainment and events at **Rotary Park and the Bandstand**. **The Putnam River Trail and the River Mill Heritage Trail** offer a little exercise, a little education with its engaging Story Walk for children, and restful scenery. **Riverfront Commons** is accessed either from Main Street past the Post Office or the riverside trails.

There, more shopping, dining, banks, and the **Price Chopper** grocery store are found.

Antiques

Putnam's revival began with antiques shops. **Antiques Marketplace**, a longtime highlight of the area, has three floors of shops to browse. **Jeremiah's Antiques and Collectible Shoppes** buys and sells "something for everyone."

Main St. has added **Wolperdinger Bookends** to its retail line up. Find traditional book genres for readers of all ages including mystery, romance, self-help, biography, and current best sellers, as well as a schedule of community events and book clubs.



Arts

Putnam is a destination for the arts. **Arts & Framing** offers custom picture framing and a gallery of local artists, sharing the space with **Twigs and Pearls** (handmade Jewelry, soaps, scents, and unusual gifts). **Block 134** is a community arts and wellness co-op. It is home to the **Silver Circle Art Center** that offers classes, studio spaces, a curated gallery, and a shop, all featuring local artists. Large spaces are available for workshops, yoga classes, private parties, gatherings and events. **The Complex Performing and Creative Arts Centre** is a community arts

education hub, offering classes and performance opportunities in dance, theater, art, and music. The conservatory program enables students to work in multiple art



forms or study a single genre intensively. **Sawmill Pottery**, open daily, is a working studio that offers classes and workshops for all ages and abilities. The onsite gallery showcases the work of ceramic artists living in northeast Connecticut.

Performance

A community theater in a historic vaudeville building, **The Bradley Playhouse** offers a full season of locally-produced



Complex Performing Arts Center

performances - musicals, dramas, and comedies. The season has something for every member of the family. Scott Higgins brings in his New England Comedy All Stars show several times a year.

More than a bar with food, **The Stomping Ground** features live music six nights a week. For the performers: the-stomping-ground.com

From morning coffee to a late-night cocktail **Sawdust Coffee House and Dessert Bar** hosts acoustic music on Friday and Saturday evenings and Sunday daytime, sawdustcoffeehouse.com.

Dining

85 Main offers fine dining - sushi, raw bar, local catch seafood - in a casual atmosphere www.85main.com. **The Courthouse Bar & Grille** summons patrons for arresting food and drink courthousebarandgrille.com. **The Broken Crust** is a cozy boutique style restaurant with salads, sandwiches, and pizza thebrokencrust.com. **The Hare and The Hound** is an Irish pub with an eclectic menu hehareandthehound.com. **The Crossings Brew Pub** in Putnam's former rail station serves pub fare with burgers that



Photo courtesy of Blackstone, Putnam

feature Angus beef crossingsbrewpub.com. **Elizabeth's Farmhouse** is a charming dining spot with rustic décor and a curated menu with such local favorites as Kung Pao Brussel Sprouts, Rhode Island Stuffies and Red Barn Meatloaf, along with traditional salads and entrees elizabethsfarmhouse.com. Recently landed, is the Jetsons-inspired **Painted Baker Café**, with breakfast and lunch in a mid-century setting (**Find them on Facebook**). Putnam's newest restaurant, **Blackstone Putnam** takes flight in the historic Adams Express building with

a seasonal track-side outdoor patio, blackstoneputnam.com. Other dining establishments may be found in a wider circle beyond downtown.

Fun Stuff

August and March Home intrigues with one-of-a-kind décor and accessories - traditional, vintage and modern.

Sparrow Soaps features goats milk soaps & lotions plus home & gift items. **Leona's Baking Company** offers cookies, cakes, pastries and more! The freezers at **Main Street Gelato** are filled with colorful and tasty artisanal gelato, small batch gourmet ice cream, sorbetto and Italian Ice. Dairy-free and vegan frozen treats as well.



Photo courtesy of Sparrow Soaps



Photo courtesy of WINY Radio

Fire and Ice Festival

The February Valentine Festival! Area businesses commission more than sixty pre-carved ice sculptures to display along the sidewalks. The centerpiece is the largest single ice-block competition in the United States with live professional ice-carving demonstrations, a 30-ft inflatable igloo, cake competition, fire performances, and glowing fire torches.

www.discoverputnam.com

Putnam Fine Arts and Crafts Festival

In its third year, the Festival will be held on the grounds of the municipal complex on June 21st and 22nd and offers a day of art, demonstrations, live music and fun. Choose from original paintings, pottery, photography, woodworking, jewelry and more. www.discoverputnam.com

July 4 Fireworks

Putnam's fireworks Park display rivals those of many larger towns and draw crowds of up to 5,000. Preceded by musical performances in the Bandstand this 30-minute show can be seen from most streets in town, but the best views are along the banks of the Quinebaug River and in Rotary Park, where you can also picnic. Call the Town Hall or check the website for display and rain dates.

www.putnamct.us

Main Street Car Cruise

This annual event on the second Sunday afternoon in August brings more than 2,000 classic and antique cars to Putnam. Thousands of visitors gather to view the shiny autos, talk to owners, meet race celebrities and watch demonstrations like burnout pits and explore the streets and shops of Downtown Putnam and. The event offers food, music, raffles and more.

www.discoverputnam.com



Great Pumpkin Festival

The third Saturday in October includes a full day of events, such as a scenic Train Excursion, Flea Market, Craft Fair, Pumpkin Carving Contest, Clowns, Face Painting, Food Court, Artists Exhibition, and live music. Local restaurants serve pumpkin-themed specials.

www.discoverputnam.com

Holiday Dazzle Light Parade

Join the local community to build—or watch—the parade. Around 100 brightly lit floats plus marching bands and walkers travel a 1.5 mile route through downtown Putnam. The Holiday Dazzle Light Parade kicks off the holiday season the Sunday after Thanksgiving. www.winyradio.com



WINY Radio

The Voice of the Community

Locally owned WINY 1350 AM and 97.1 FM and WINYRADIO.COM is Eastern Connecticut's radio station for talk, news, weather and sports. www.winyradio.com



**Congratulations to
WINY Radio awarded
'Business of the Year' in 2024!**



PUTNAM
BLACKSTONE
RESTAURANT
OUTDOOR BAR • PATIO

Located in the heart of Putnam, we bring innovative cuisine, unique flavor pairings, and hand-crafted martinis to your table. Perfect for foodies, date nights, or group outings, our globally inspired menu offers an unmatched dining experience.

35 MAIN STREET, PUTNAM
BLACKSTONEPUTNAM.COM




Advanced
Back & Wellness Center
...healing from the core

Dr. Debra A. Burns
CHIROPRACTIC PHYSICIAN

860.928.2292
21 South Main Street
Putnam, CT 06260
quietcornerchiro.com



Nestled on the banks of the Quinebaug River in northeastern Connecticut, the town of Putnam boasts an 'Arts & Al Fresco' motif. An easy & scenic drive to a walkable downtown filled with restaurants, bars, cafes, art galleries, boutiques, theater, year-round events and more. A small town with BIG happenings! What will you discover?...



www.discoverputnam.com | putnambusiness.org | putnamct.us

Renee's
Bistro & Catering
SERVICE

A Casual neighborhood spot offering "fresh home-made" meals and "made from scratch" desserts located at 142 School Street. Dine in or Grab N Go.

Corporate Catering and Catering of all types are our specialty. You will love how accommodating Renee's is for all your last minute needs!



142 School Street, Putnam, CT 06260
ReneesBistroandCatering.com
Or contact us by phone 860-412-9365 or email: support@ReneesBistroAndCatering.com

WOODSTOCK BUILDING ASSOCIATES, LLC
The Leader in Design-Build

WOODSTOCK, CT
3 Route 171
860-928-0897



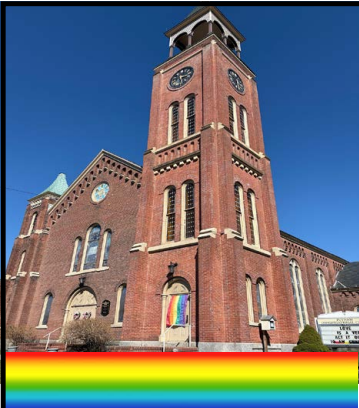
FRANKLIN, MA
15 Main Street, Suite 11A
508-570-4853

From design to completion, our architects, designers, estimators, project coordinators, superintendents, carpenters, and plumbers work as a team to ensure consistently superior craftsmanship for your project. Design and building costs are tailored to fit your needs without compromising quality. If you are looking for an experienced, organized, professional, and cost conscious design-build company, call Woodstock Building Associates today!



REMODELING - NEW CONSTRUCTION - KITCHENS
BATHS - ADDITIONS - PLUMBING AND HEATING

MA Home Improvement Contractor #419085
MA Construction Supervisor #411269 - CT Home Improvement Contractor #565908 - CT New Home Construction Contractor #160



JOIN US AT
The Congregational Church of Putnam, UCC
"The Beacon of Hope on the Hill"
SUNDAYS AT 10 A.M.
THE REVEREND PAMELA BRIDGLE
PASTOR
ALL ARE WELCOME!
175 MAIN STREET, PUTNAM, CT 06260
860.928.4405



Vanilla Bean Cafe

Breakfast
Lunch & Dinner
Daily Specials
Beer & Wine
Outdoor Patio

Connecticut's Best Country Cafe *Yankee Magazine*

450 DEERFIELD ROAD POMFRET, CT 860.928.1562 | thevanillabeancafe.com



Chase Graphics
Graphic Design & Printing Solutions!
124 School St. • Putnam, CT 06260
860-928-3973 • www.chasegraphics.net

We make you
SHINE

Let us **SHOW YOU**
the **ADVANTAGES** of
BUYING locally!

Proud Members of
the following organizations:



ATTORNEY MICHELE ANN PALULIS, LLC



Friendly compassionate
legal services for you and
your loved ones.

158 Main Street, Suite 2, Putnam CT 06260
(860) 928-9928 • michele@attorneypalulis.com



America's First




Network Credit Union
Northeastern CT Healthcare Division

Proudly serving healthcare employees and their families
in Northeastern Connecticut since 1965.



320 Pomfret St. Putnam, CT 06260 (Located inside of Day Kimball Hospital)
Phone: (860) 928-2347 • putnam@afncu.com • www.afncu.com

Educational *Opportunities*

Putnam is fortunate to be well served with learning opportunities nearby for students of all age levels. The individual websites should be consulted for the most current information.

PUTNAM PUBLIC SCHOOLS

The Putnam Public School System enrolls almost 1,300 students in an elementary, middle and high school. The mission of the Putnam Public Schools, in partnership with the community, is to empower all individuals and inspire them to become lifelong learners and engaged citizens by providing a diverse and meaningful educational experience. For the second year in a row, Putnam High School, which just completed a renovation for the 21st Century.

www.putnamschoolsct.org

PRIVATE AND PAROCHIAL OPTIONS:

Marianapolis Preparatory School

An independent, Catholic, boarding and day school located in Thompson, CT. Here, students in grades 9-12 and postgraduates live and learn alongside faculty members, embrace growth through a liberal arts curriculum rooted in experiential learning, make a social impact through community service, and graduate as confident, engaged citizens, ready to lead in an ever-changing world. A 100% college acceptance rate. Explore all that Marianapolis has to offer online at www.marianapolis.org

Pomfret School

Founded in 1894, Pomfret is a small independent boarding and day school serving grades 9-12 plus postgrads. Set on a stunning 500-acre hilltop in Northeastern Connecticut, our students come from around the country and the world to find purpose and meaning in their lives through a transformational educational experience. In 2022, Pomfret was ranked one of the best private high schools in America. To see how we're inspiring the next generation of change-makers and problem solvers. www.pomfretschool.org



The Woodstock Academy

Founded in 1801, The Woodstock Academy is a day and boarding independent town academy serving students in grades 9 – 12 and post graduates from the local area, across the United States, and around the world. The Woodstock Academy prepares all students by providing diverse opportunities through a rigorous curriculum and a variety of programs in order to cultivate the necessary skills to become lifelong learners and global citizens.

www.woodstockacademy.org

Putnam Science Academy

PSA is a private co-educational boarding and day school serving students from grades 8-12 and post graduates. PSA offers a comprehensive college preparatory program focusing on arts, science, mathematics, and technology. This small structured school delivers a solid educational program and enrolls students from more than 30 countries from around the world. With a 100% college placement rate, most of our student athletes move onto Division I or II schools with scholarships.

www.putnamscience.academy

The Rectory School

Just ask our students and families—they love it here. Rectory School is so much more than an educational institution—we are a thriving community where curiosity, creativity, and character are nurtured. Our vibrant 138-acre campus offers a unique blend of academic excellence and personal growth opportunities for junior boarding students (grades 5 to 9) and day students (grades K to 9). Our dedicated faculty and administrative staff are committed to providing a supportive and challenging environment that empowers students to discover their passions, embrace new experiences, and develop into confident, well-rounded individuals. www.rectoryschool.org

Quinebaug Middle College

Located on the campus of Quinebaug Valley Community College, QMC is a magnet high school offering a middle college experience for students in grades 9 – 12 who are ready to take greater ownership and responsibility for their own learning. With its dedicated faculty and staff, students interested in science & technology, engineering, math, liberal arts, allied health and advanced manufacturing careers are prepared for success in college or career.

www.eastconn.org/qmc

POST-SECONDARY EDUCATION:

Quinebaug Valley Community College

QVCC provides high-quality education, workforce training, excellent services and innovative partnerships that enhance the vitality of the community and improve the quality of life for residents of northeast Connecticut. The word “community” in the college’s name reflects a strong commitment to understand and to meet the educational needs of area citizens, businesses, and industries. At QVCC you can earn an associate’s degree, transfer to a four-year college or university, begin or advance your career, or enrich your life through lifelong learning.

www.qvcc.edu

Healthcare & Wellness

Day Kimball Healthcare is the community hospital in Putnam, a nonprofit provider of integrated health-care services in northeast Connecticut and nearby Massachusetts and Rhode Island. Since its founding in 1894, Day Kimball has provided high quality, compassionate care close to home. Health care is provided by Day Kimball Hospital, Day Kimball Medical Group, Day Kimball HomeCare, Day Kimball Home-Makers, Hospice and Palliative Care of Northeastern Connecticut, and healthcare centers in Danielson, Dayville, Plainfield, and Putnam. Day Kimball recently celebrated 125 years as the community's leading medical provider. www.daykimball.org

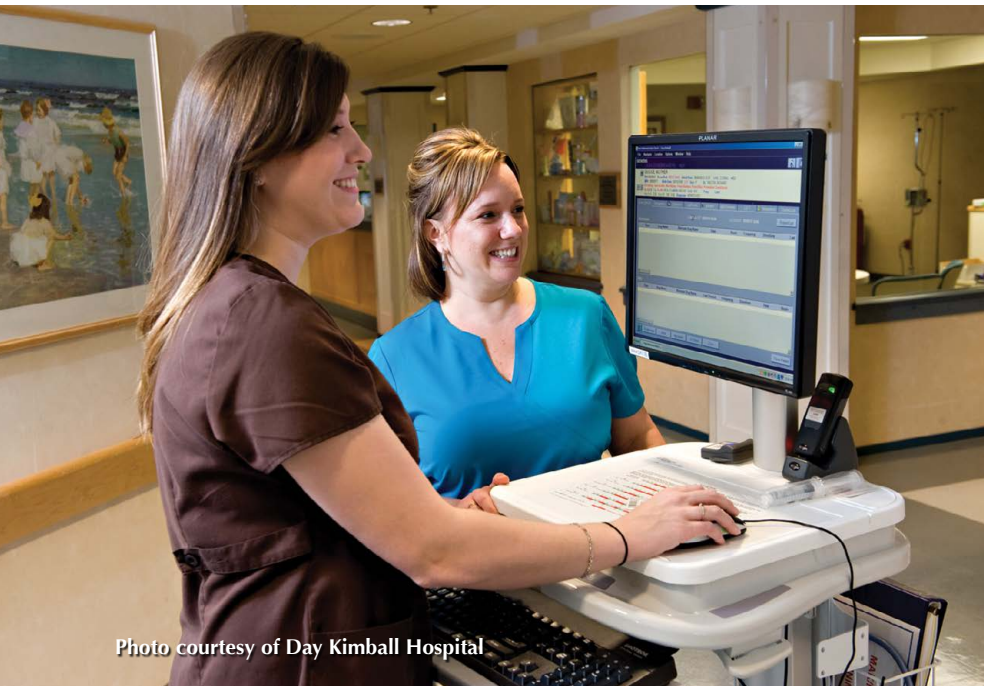


Photo courtesy of Day Kimball Hospital

OTHER HEALTHCARE SERVICES:

The Center For Bone & Joint Care

The Center For Bone & Joint Care specializes in the care of the muscular and skeletal systems and offers services in sports medicine, hip and knee, foot and ankle, hand and elbow, spine and shoulder and joint care as well as osteoporosis programs. The Center's Board Certified orthopedic surgeons are exceptional doctors that work with an outstanding hospital and staff at Day Kimball Hospital.

www.bonejointcare.com

Advanced Back & Wellness Center

The mission of Advanced Back & Wellness Center is to educate as many people as possible about the benefits of chiropractic care as it relates to the health of the spine and nervous system. Dr. Debra Burns has

many unique treatment therapies including nutritional counseling, pregnancy and pediatric chiropractic, stress reduction and many more. Applying the secrets of wellness and prevention will make an impact on your entire health picture.

www.quietcornerchiro.com



Generations Family Health Center

Generations Family Health Center, Inc. is a private, not-for-profit, regional Federally Qualified Health Center (FQHC) that has been serving eastern Connecticut since 1984. Generations provides a full continuum of primary health care, oral health care, behavioral health care and case management and educational services to a primarily medically underserved population through sites in Willimantic, Norwich, Danielson and Putnam.

www.genhealth.org

Natchaug Hospital

Natchaug Hospital, a division of Hartford Health Care, provides behavioral health services including mental illness, substance abuse, and learning disorders for children, adolescents and adults across eastern Connecticut. The hospital operates a 57-bed facility in Mansfield Center, Connecticut, that annually provides inpatient care for more than 650 seriously emotionally disturbed children and adolescents as well as 1,300 adults in crisis. Natchaug Hospital's Journey House program is a 13-bed specialized residential treatment facility on the Mansfield campus for adolescent girls ages 12 to 18 who are involved

in the court-system.

Natchaug's Day Hospital, after school and special education school programs serve more than 2,750 children, adolescents and adults in their own communities each year.

www.natchaug.org



Quiet Corner Inn

www.quietcornerinn.com



Newly Renovated • Cable TV with HBO
Non Smoking Units Available • Micro / Fridge Available • Air Conditioned
• Hairdryers In All Rooms • Free Highspeed Internet

Exit 37-W Off 395 • Rt. 6

Major Credit Cards Accepted
Minutes From Foxwoods Casino & Mohegan Sun

860-774-9644

479 Providence Rd. (Rt. 6) Brooklyn, CT



NEW ENGLAND

16 POMFRET STREET, PUTNAM | 541 HARTFORD PIKE, DAYVILLE

WWW.GERARDIONLINE.COM



CR Premier
PROPERTIES

860.455.5363

crpremier.com



Licensed in CT, MA & RI

260 Route 171, Woodstock, CT 06281 • vivian@crpremier.com



Vivian Kozey • Realtor

PERFORMANCE FOR THE PLANET. SUPPORT FOR PUTNAM.

At WIN Waste Innovations, giving back to the communities where we live and work is fundamental to all we do. From creating renewable energy to supporting communities like Putnam, we're helping make the world a healthier, safer and more vibrant place to call home.



To learn more about our commitment to our communities and the environment, please visit www.win-waste.com.



PERFORMANCE FOR THE PLANET

©2022 WIN Waste Innovations. All rights reserved.

HOD #1355



TURN THE PAGE ON YOUR OLD FUEL PROVIDER



Family Owned & Operated Since 1915

WE'RE NOT GOING ANYWHERE!

- ✓ **FULL-SERVICE**
- ✓ **ESTABLISHED & RELIABLE**

*Choose a Propane & Oil Company
You Can Trust!*

 860.822.2424

 SpicerPropaneandOil.com