

Process Improvement Meeting Agenda – 5/5

- MEVA Mission and Vision, Assessment Calendar, and Strategic Goals.
- MEVA FY26 ESEA Application Public Comment and Comprehensive Needs Assessment.
- MEVA Win over the student.
- ASSESSMENT: State testing Update – Stephanie Emery.
- ASSESSMENT: NWEA Map Growth Update – Dr. Christina O’Grady.
- SUPPORT: Advisory Update – Dr. Christina O’Grady.
- SUPPORT: Navigation Bar and Help Desk Update – Nicole Hart.
- INSTRUCTION: Teacher tips for the last month of school – Don Fournier.
- Other and next Process Improvement Meeting on Monday, May 12th, 3:00 pm.

Mission and Vision



School Mission:

Maine Virtual Academy's (MEVA) mission is to develop **each** student's full potential with learner-centered instruction, research-based curriculum and educational tools and resources to **provide a high-quality learning experience for grade 7-12 students who are in need of alternative educational options.** MEVA will develop an **Individualized Learning Plan (ILP)** with specific learning goals to meet **each student's needs.** MEVA's rigorous curriculum is **aligned** to the eight Maine content areas, the **Maine Learning Results, the Common Core State Standards and the Next Generation Science Standards.**

School Vision:

MEVA will be a leading 21st century public charter school in Maine and will improve student learning outcomes through **individualized instruction,** as evidenced by **student academic proficiency, student academic growth, post-secondary readiness, and the demonstration of 21st century skills such as critical thinking, problem solving, and self-direction.** MEVA will empower students to acquire the academic and life skills needed to succeed in **post-secondary education and career opportunities.** Our graduates will be **prepared** for college or other postsecondary career training opportunities

Assessment Calendar 2024-2025

Assessment Type	Fall Dates	Winter Dates	Spring Dates
NWEA	September 10, 11, & 12, 2024 (Makeup Day - September 13, 2024)	January 14, 15, & 16, 2025 (Makeup Day - January 17, 2025)	April 29, 30, May 1, 2025 (Makeup Day - May 2, 2025)
MEA (ELA & Math)	October 7-25, 2024	NA	May 12-23, 2025
MEA (Science)	NA	NA	April 7-17, 2025 (HS) May 12-23, 2025 (8 th Grade)
ACCUPLACER	September 10, 11, & 12, 2024, with makeup days scheduled throughout the year	Ongoing	Ongoing
IReady	<p>7th & 8th Graders - Standards Mastery assessment, August 26-30, 2024 (during FOX Time and 3 pm with Christina)</p> <p>9th Graders for Fall 2024 - August 26-30, 2024 (3 pm with Christina)</p> <p>10th Grader - August 26-30, 2024, diagnostic in the Fall ONLY to inform MTSS practice related to Algebra I skills (3 pm with Christina)</p> <p>Reading This will be completed on an ongoing basis based on NWEA data for students who have an identified need for a deeper look at skill deficits.</p>	January 16-24, 2025 (For mid-year enrollees only)	April 29, 30, and May 1, 2025, after NWEA testing

MEVA Strategic Goals – Reading Growth

Reading Growth.

Indicator	Description	2023-24 Performance BASELINE	Short term Goal for SY 2024-25 NEXT YEAR	Long Term Goal SY 2028-2029 FIVE YEARS
1.4a	Subgroup Performance: Maine State Assessment (NWEA MAP) 3rd-8th	MEVA reported the following subgroup performance: Students on IEPS: 36% Students on 504s: 44% F+R Lunch: 43% Sex/Gender: Male: 32%; Female: 46%	Partially Meet (Approaching) subgroup performance measure in reading, with three out of five (3/5) subgroups achieving the 45% threshold, by next year.	Meet subgroup performance measure in reading, with five out of five (5/5) subgroups achieving the 45% threshold, for SY-2028/2029.

MEVA Strategic Goals (Updated) – Math Proficiency

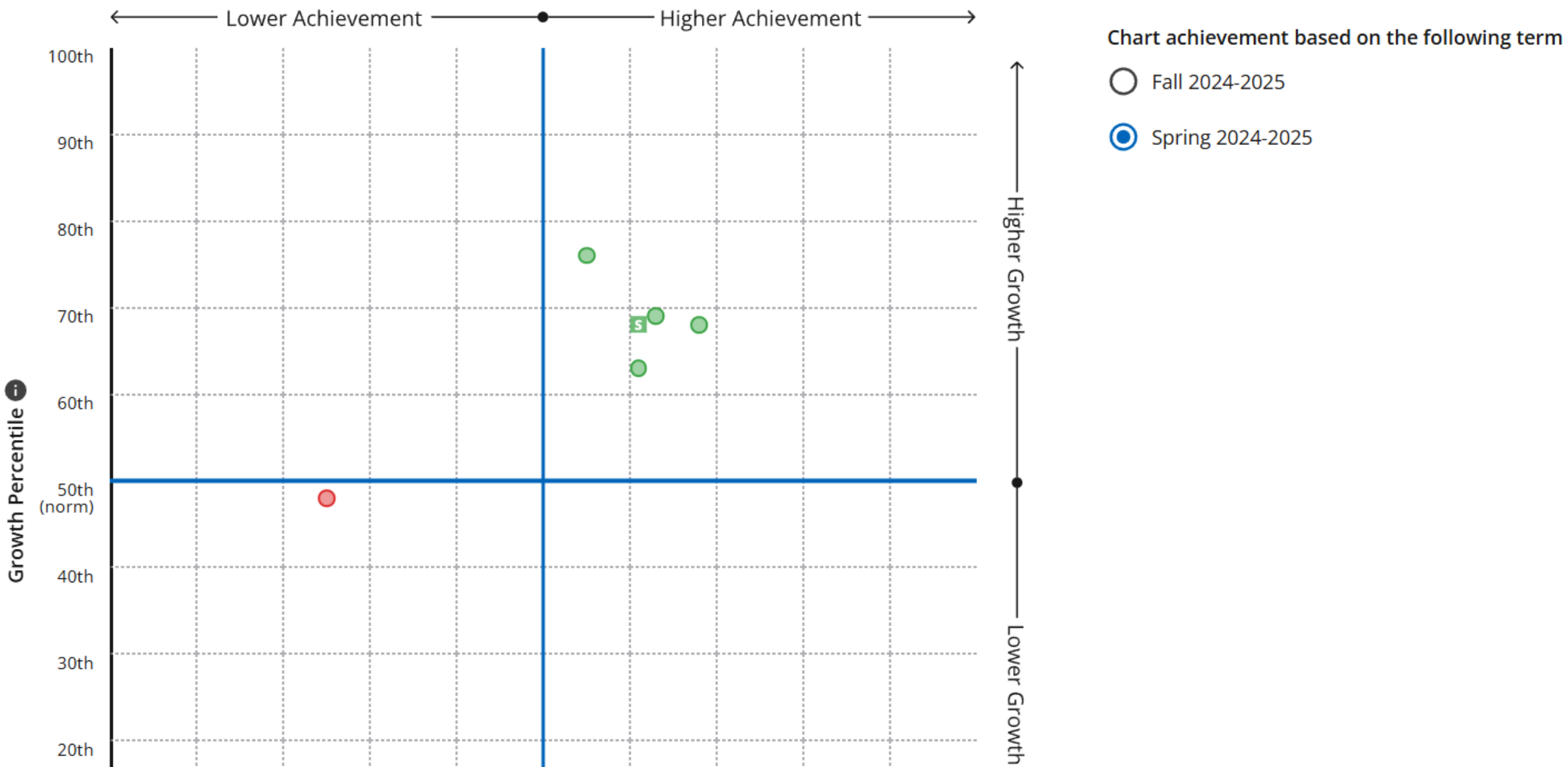
Math Proficiency.



Indicator	Description	2023-24 Performance BASELINE	Short term Goal for SY 2024-25 NEXT YEAR	Long Term Goal SY 2028-29 FIVE YEARS
1.1b	Student Academic Proficiency - MDOE Through-Year Assessment, Math	For all students assessed, MEVA reported the following grade level and overall performance (difference from applicable state averages): Grade 7 – 26% (-12%); Grade 8 – 21% (-18%); Grade 10 – 26% (-16%); and Overall – 24% (-16%).	Partially Meet (Approaching) performance measure in math proficiency, with three out of three (3/3) grade levels achieving within fifteen percent (-15%) of the applicable state averages, by next year, for all students assessed.	Meet performance measure in math, with three out of three (3/3) grade levels achieving within five percent (+/- 5%) of the applicable state averages by SY 2028-29, for all students assessed.

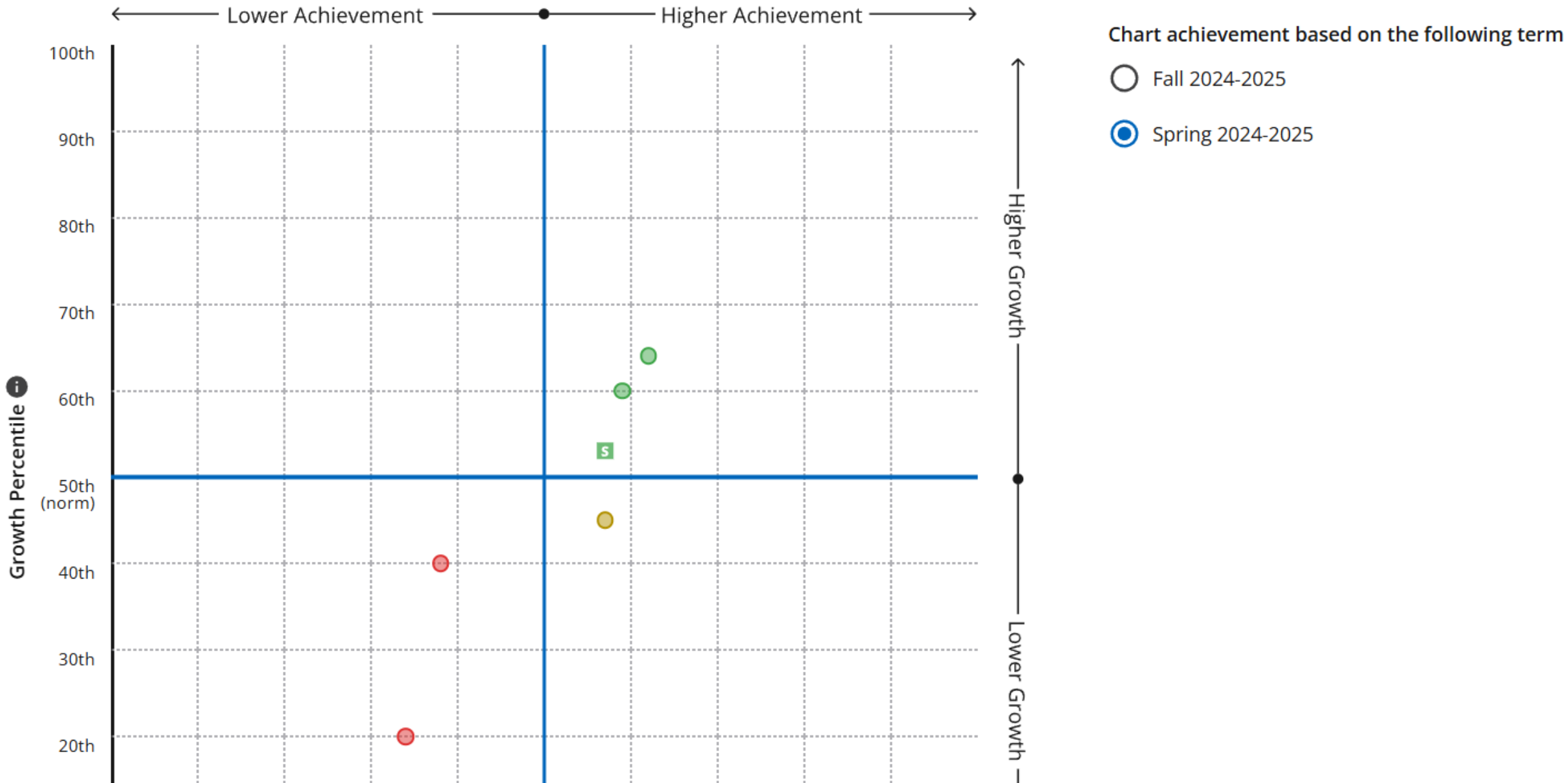
Growth and Achievement Quadrant By Grade

Maine Virtual Academy | Math K-12



Growth and Achievement Quadrant By Grade

Maine Virtual Academy | Reading



Growth and Achievement Quadrant By Grade

Maine Virtual Academy | Language Usage

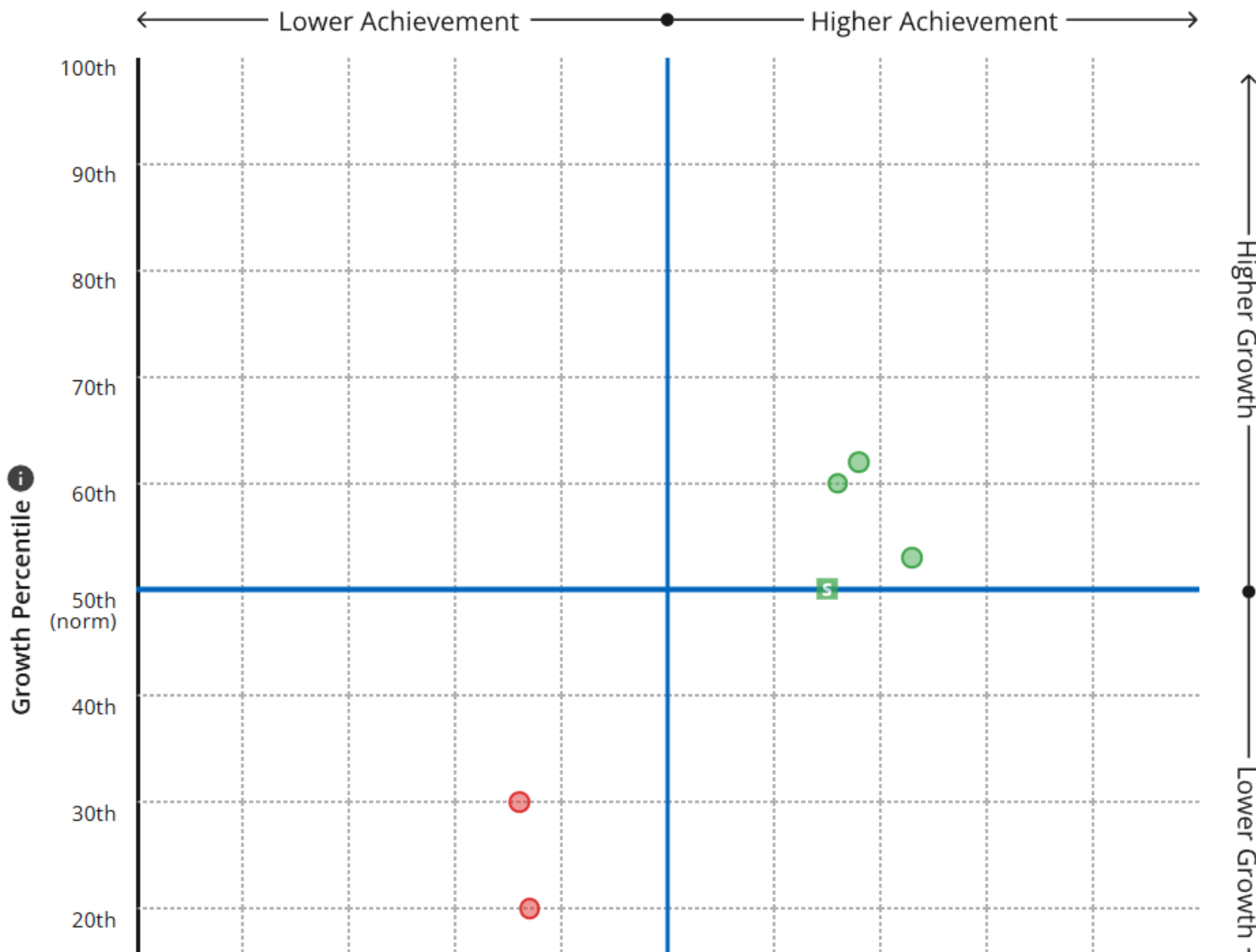


Chart achievement based on the following term

○ Fall 2024-2025

● Spring 2024-2025

MEVA FY26 ESEA Application Public Comment and Comprehensive Needs Assessment

- We made the first pass at completing the SY-2024/2025 Comprehensive Needs Assessment. We will follow up when spring 2025 assessment data become available.
- Looking ahead at the FY26 ESEA Application, the public comment period opened on April 7th, 2025. We are seeking feedback on how the grant funds may be used to support student achievement and growth.
- In the past ESEA funds have been used to secure faculty to provide supplementary instruction in English Language Arts and math. Professional development has focused on teacher courses. We aim to continue this approach to utilizing FY26 ESEA funds.

Win Over the Student!

Thoughtful and consistent communication is the foundation on building successful rapport with our families and students.

Immediate intervention has been recognized as the most effective method in student retention. Every role within the school plays an important part in this effort.

Without our Students there would be no MEVA!

Win Over & Rapport

- **Win Over**: is a proactive approach/mindset. Win “back” is more reactive and is also needed in some cases, like in progress withdrawals as an example.
- **Rapport Definition**:
 - The Merriam-Webster Dictionary defines Rapport as; *a friendly, harmonious relationship especially: a relationship characterized by agreement, mutual understanding, or empathy that makes communication possible or easy.*
- **Google Dictionary - Examples of Further Meaning**;
 - 1. Rapport is a good sense of understanding and trust.
 - 2. A close and harmonious relationship in which the people or groups concerned understand each other's feelings or ideas and communicate well. Example, *"she was able to establish a good rapport with the children"*

Communication

- In ALL Cases;
 - Communication should always exhibit compassion, empathy and kindness.
 - Be an effective communicator, timely and responsive.
 - Exhibit a willingness to help and serve our families well.
 - Never forget to share the vast opportunities we have at MEVA to support our students!

Withdrawal Mitigation Process

- **Ask why?** - Use phrases like, “*Before* you withdraw, tell me about your reason. There may be something we can do for you.”
- **Listen for keywords;** lack of support, socialization, motivation challenges, tech or navigation challenges and so forth.
- **As you listen, empathize** - Understand their position and their feelings. Many times, families or students have been thinking about withdrawal for a while.
- **Advocate for MEVA’s programs** - Share information on our clubs, self-paced options, and student support opportunities. See if they are willing to have a team meeting to talk over work credit options, early college opportunities, and so much more. Some students may qualify for early graduation.
- **Document, document, document** - your mitigation efforts in contact logs within Infinite Campus, then *submit a “Rapid Response” form below*. Familiarize yourself with the form selections to be aware of the kinds of barriers that lead to withdrawals.
- **Link to the form:** [24-25 Rapid Response \(Intervention\) Form](#)

State Assessment Updates:

Site Proctors – Sites run from May 12th -16th

Travel Team – Grades 7 & 10 for MTY can be tested till May 30th, 8th graders are only available to test May 12th – 23rd – keep this in mind when scheduling.

- ▶ Testing Kits - will be ready for pick up on May 9th at the MEVA suite south wing.
 - ▶ Site Proctors – Return kits by May 16th or once your test site has closed completely. (exception PI/Houlton can return the following week)
 - ▶ Travel Team – Please return kits by May 27th, unless you are testing someone past this date.
- ▶ State Assessment Trainings – Are mandatory, refresher for MTY and Science are updated in Vector. Schedules are now released to staff.
 - ▶ No printed manuals going forward, please download manuals/testing scripts from Vector.
 - ▶ Test codes will continue to be printed and in your kits.
 - ▶ Travel team – test codes will be on the designated tab the morning of testing. If you are missing codes contact Stephanie Emery for science or MTY, or Christina O'Grady for MTY.

Important Tips:

- ▶ Be an active Proctor, move around the room and keep an eye on testing progress.
- ▶ Make sure student tests are showing as submitted on the proctor dashboard after each section **before moving on.**
- ▶ **Do not log into state assessments using the student login dashboard and student test codes, this is prohibited and is a test security violation.**
- ▶ 8th graders are being informed to bring their own lunch this year, providing lunches did not work well in the past.
- ▶ Offer snacks and water to all students during each AM/PM session.
- ▶ Give plenty of breaks and please retain students who finish testing completely, until the next break before dismissing them to prevent distractions. (*Students must be supervised by a support proctor until they are picked up.*)
 - ▶ Exception – 8th grade Science is a timed exam. In this case, students must wait until everyone is done testing before moving on to the next section.

Spring *NWEA*

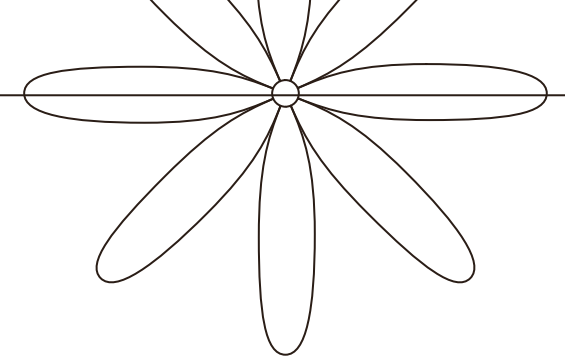
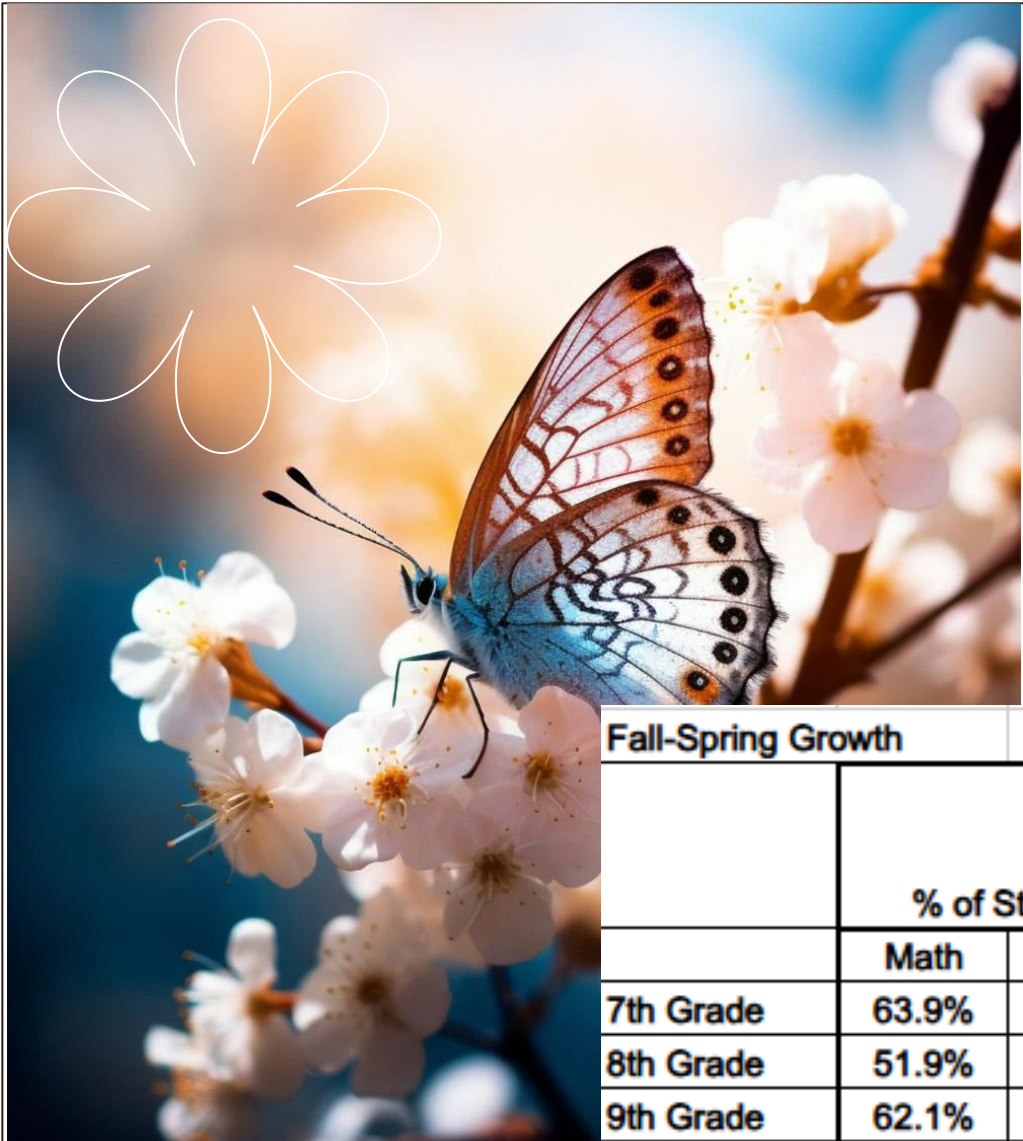


May 5, 2025



Participation *Numbers*

Final Participation Numbers										
	Total Students on Roster	Prelim # Math	Prelim % Math	% SE Complete	Prelim # Reading	Prelim % Reading	% SE Complete	Prelim # Language	Prelim % Language	% SE Complete
7th Grade	43	43	100.00%	100.00%	42	97.67%	91.67%	42	97.67%	91.67%
8th Grade	35	33	94.29%	93.33%	33	94.29%	93.33%	31	88.57%	86.67%
9th Grade	77	73	94.81%	90.91%	73	94.81%	95.45%	71	92.21%	86.36%
10th Grade	118	108	91.53%	87.50%	108	91.53%	87.50%	107	90.68%	87.50%
11th Grade	106	87	82.08%	78.95%	86	81.13%	73.68%	83	78.30%	63.16%
Schoolwide	379	344	90.77%	89.00%	342	90.24%	88.00%	334	88.13%	83.00%



Initial Growth

Fall-Spring Growth							Median Achievement Math	Median Achievement Reading
% of Students who Met			% of Projected Growth Met					
	Math	Reading	Language	Math	Reading	Language		
7th Grade	63.9%	34.3%	31.4%	218.2%	-17.1%	3.5%	55th	34th
8th Grade	51.9%	42.3%	30.8%	106.7%	45.7%	-7.2%	25th	38th
9th Grade	62.1%	48.5%	52.3%	281.4%	156.5%	205.8%	63rd	57th
10th Grade	63.3%	61.2%	57.7%	277.1%	181.1%	115.2%	68th	62nd
11th Grade	54.4%	56.3%	42.1%	248.0%	159.8%	49.7%	61st	59th

Feedback

Survey

14 teachers have completed the survey. Please complete the survey with feedback about the spring administration of NWEA.

Rapid-Guessing

We are exploring and testing using the NWEA lockdown browser for the 2025-2026 school year. Stay tuned!

We are investigating and comparing scores that fall outside the “normal” range with additional data points.



Advisory Update

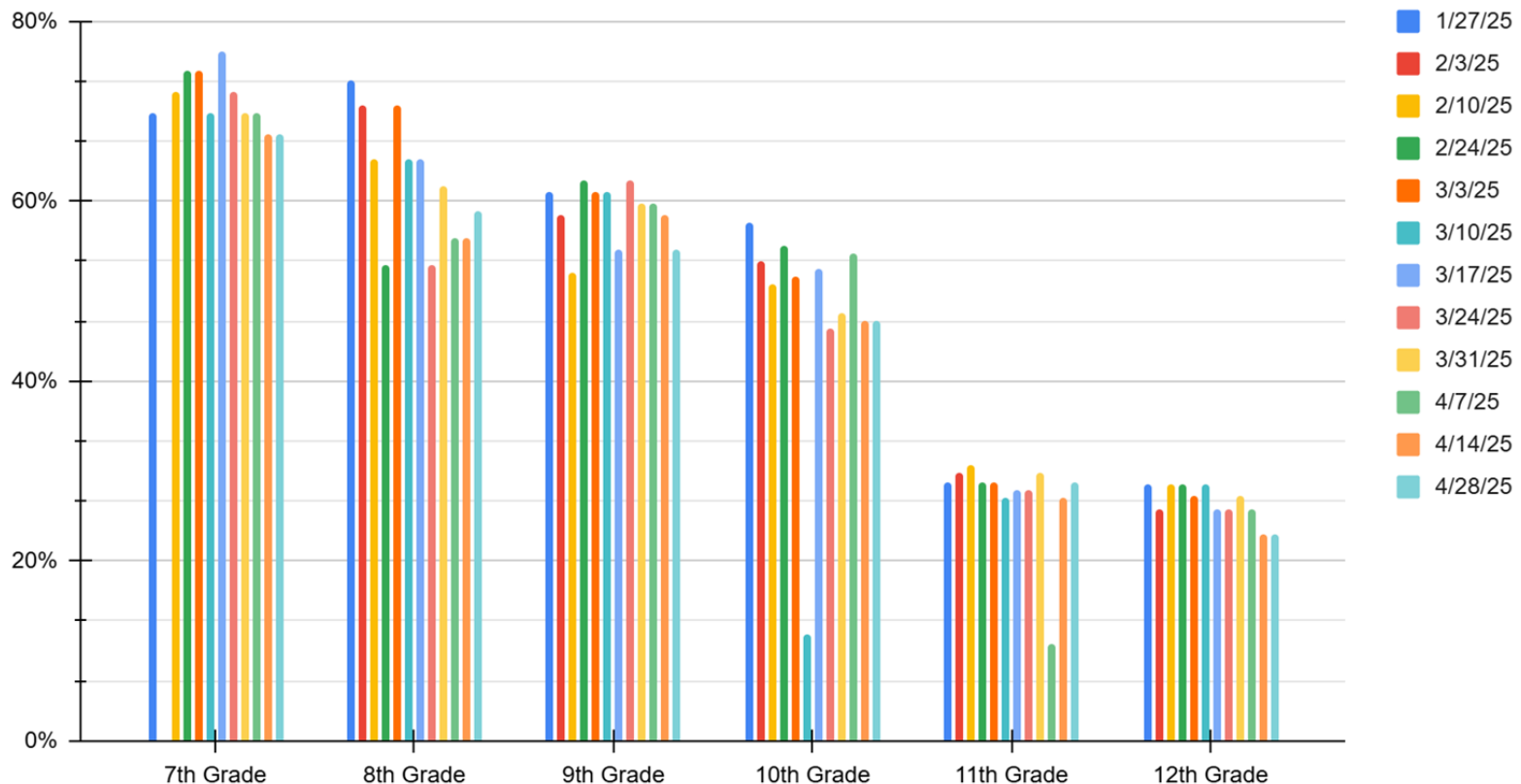
May 5, 2025



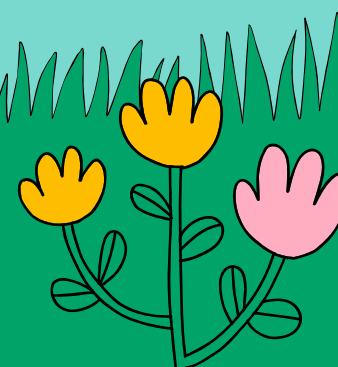
Attendance Data

Attendance Data

By Grade Levels - Second Semester Only

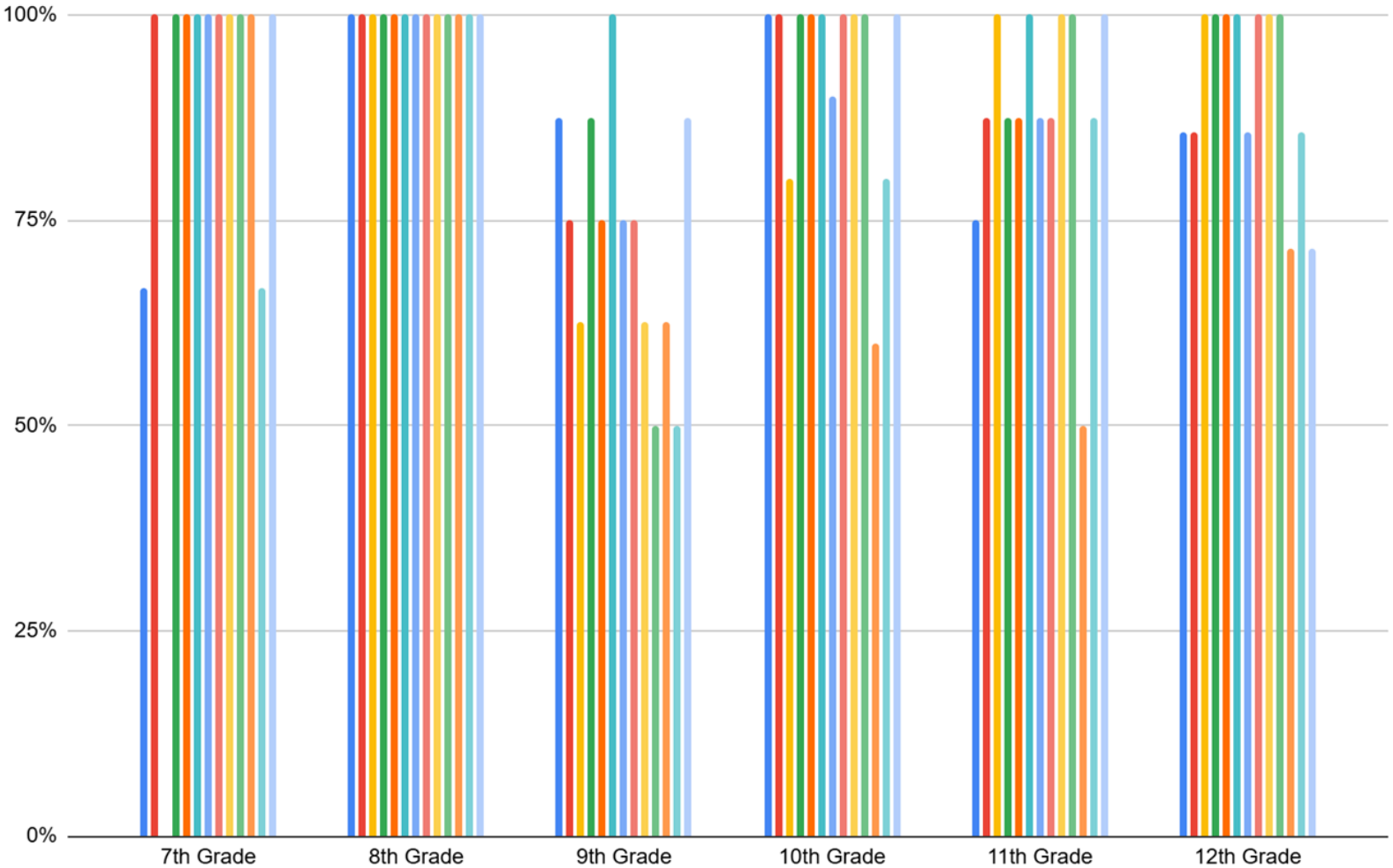


This data is for the second semester only. Overall, with the exception of 8th grade the attendance has remained relatively the same week-over-week.



Advisor Attendance

Advisor Attendance

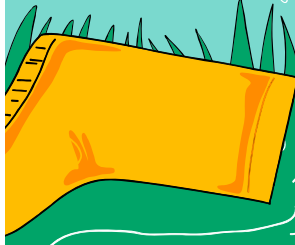
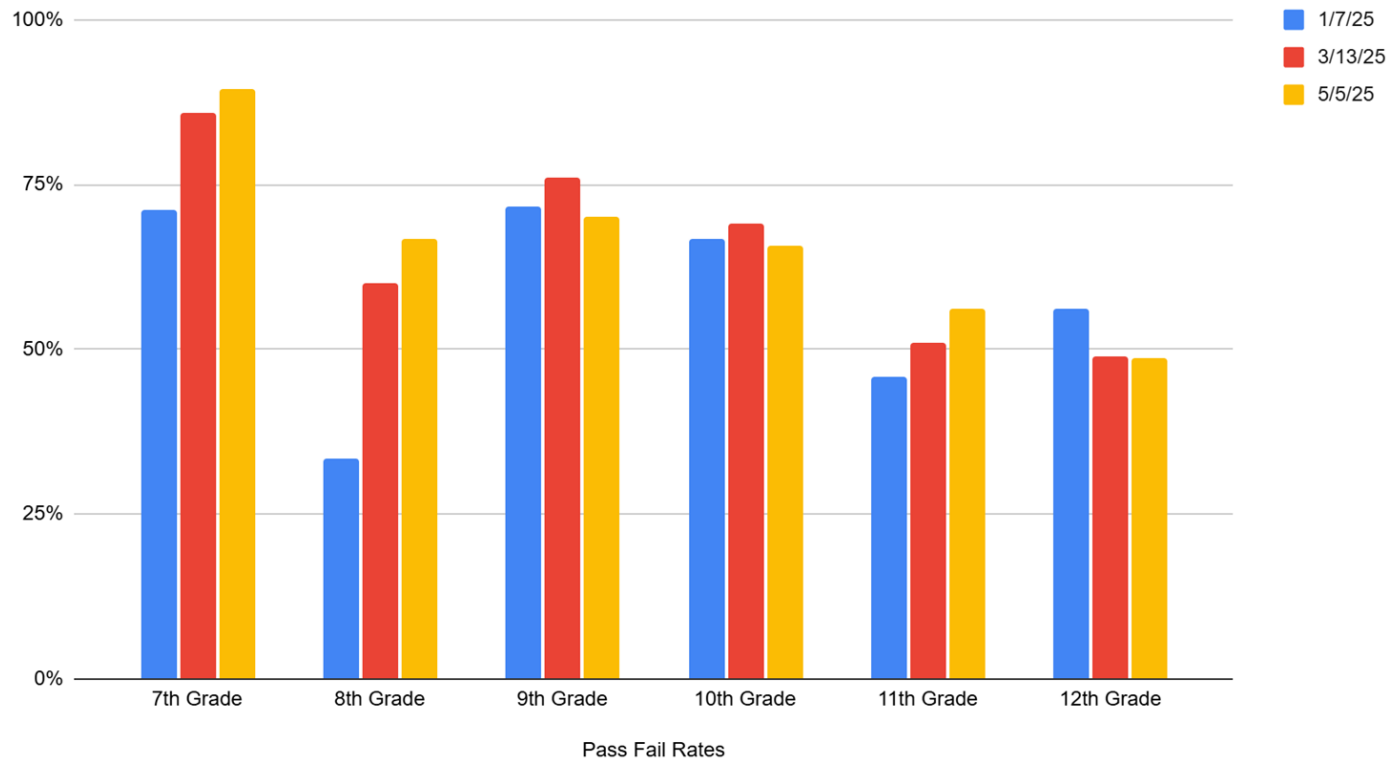


- 1/13/2025
- 1/27/25
- 2/3/25
- 2/10/25
- 2/24/25
- 3/3/25
- 3/10/25
- 3/17/25
- 3/24/25
- 3/31/25
- 4/7/25
- 4/14/25
- 4/28/25



Passing Rates

Passing Rates by Grade Level





HelpDesk Community Data!

WE HAVE HAD...

80/430 (19%) Students engaged with HelpDesk by joining us in a LIVE Session

58/360 (16%) HS Students

22/70 (31%) MS Students

25 Students attend at least **ONE** live session in **April**

55 Students attend **TWO** or more live session in **April**

36 Students attended **ONE** live session **EACH WEEK** (3 Weeks)

FYI: Do you have students you are expecting to see at HelpDesk? If so, you can let me know and I will add them to my list and Attendance will reach out to any who are absent.

March

Student Attendance by Grade Level

7th - 11/40 - 28%

8th - 10/30 - 33%

9th - 22/75 - 29%

10th - 27/118 -
22%

11th - 19/105 -
18%

12th - 7/70 - 10%

April

Student Attendance by Grade Level

7th - 13/40 - 33%

8th - 9/30 - 30%

9th - 14/75 - 19%

10th - 24/116 -
21%

11th - 13/103 -
13%

12th - 7/66 - 11%

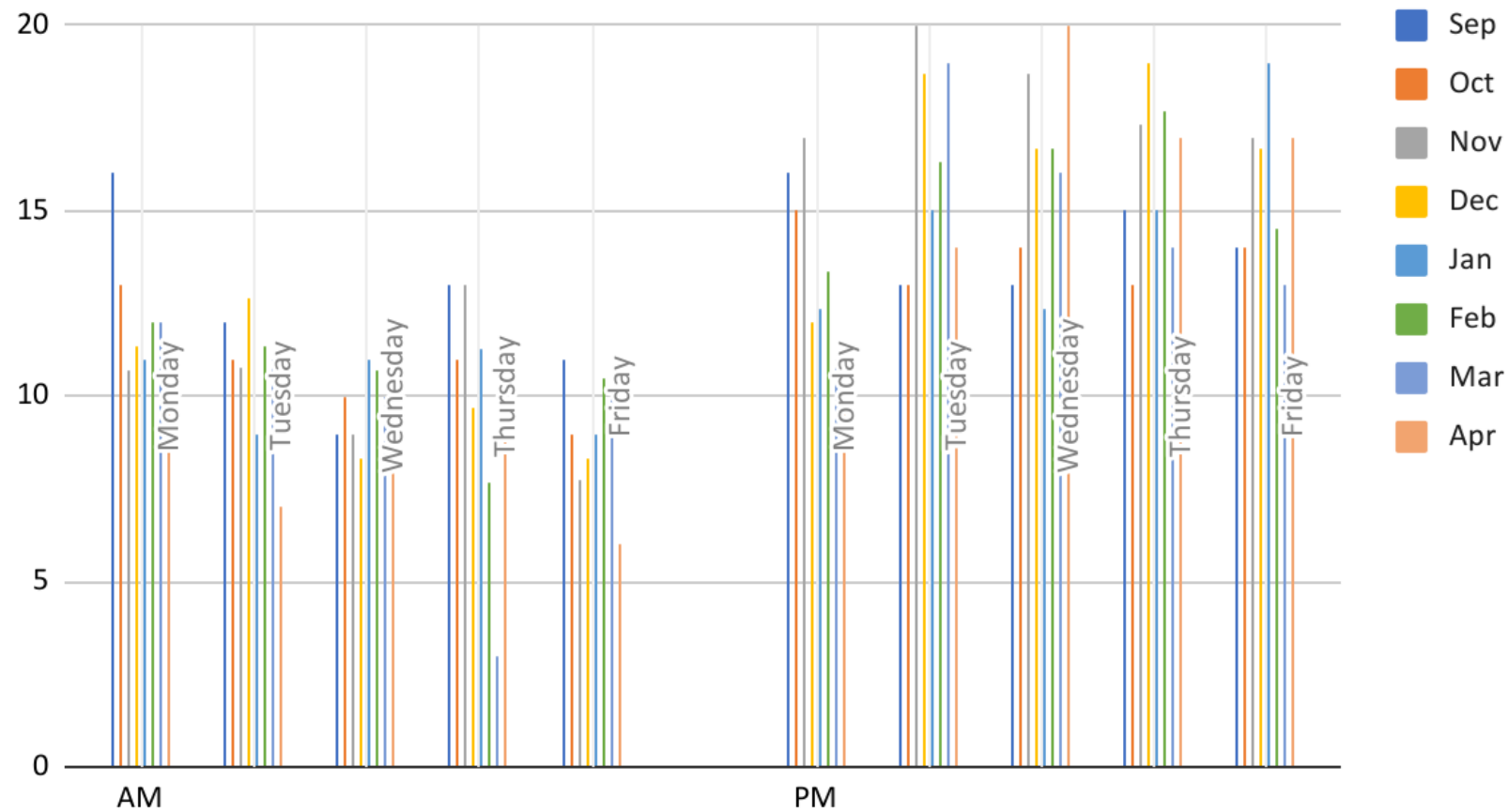
HelpDesk KUDOS!

I'd like to extend my heartfelt thanks to Stephanie Martitz for her unwavering support of our science students at HelpDesk each afternoon this year. Your dedication and commitment have made a meaningful difference—thank you for all that you do!



HelpDesk Student Attendance

Average number of Students at HelpDesk



NOTE* AM includes only HS; PM includes Both MS & HS

Updates to HelpDesk Navigation Bar!



HelpDesk 2024-2025 NHart



Nicole Hart



Course Home



Calendar



About HelpDesk



Earn Awards



Discussions



Awards



MEVA Programs



Class Tools

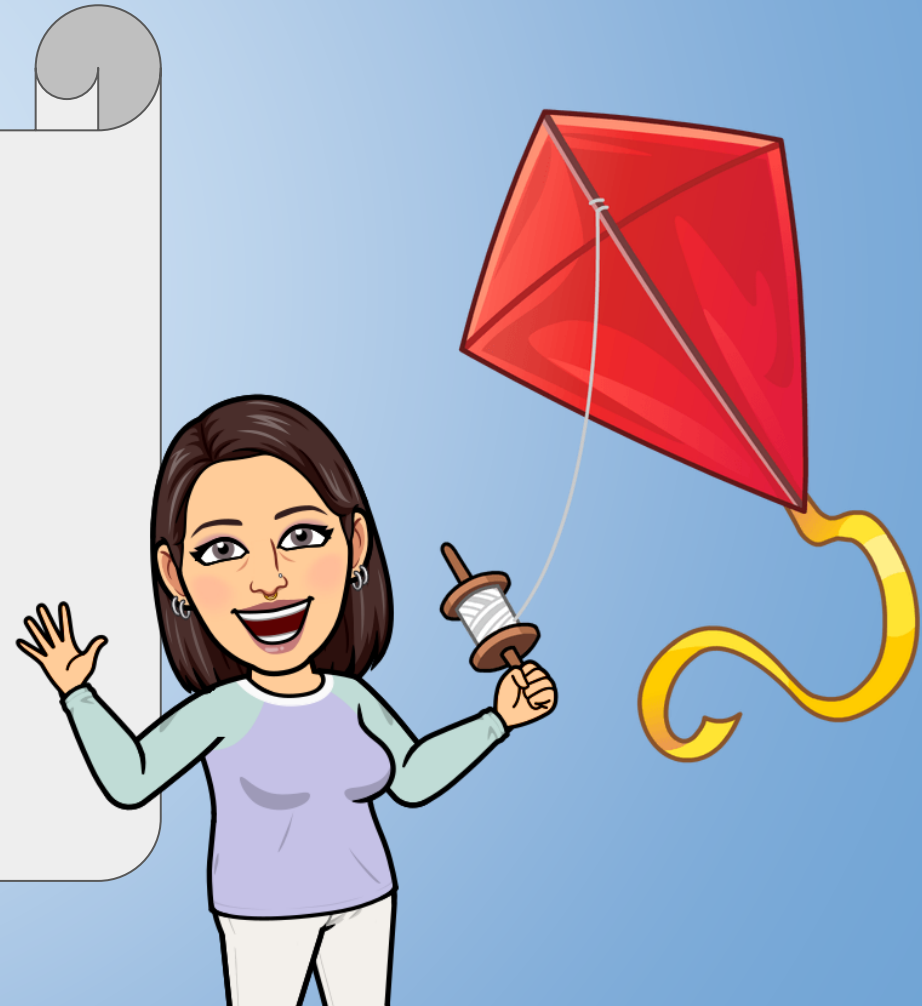


Congratulations, to the students below for taking control of their education by attending and working at HelpDesk at least once a week in the month of April!

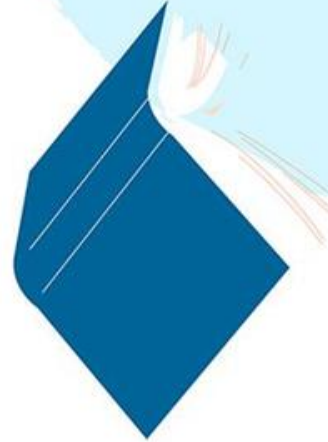
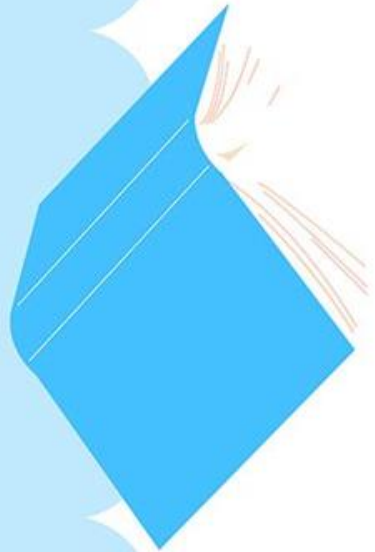
HelpDesk Frequent

Attendees!

Addison W	Emmalynn M	Juniper S	Kayli C	Viktorya D
Addison S	Erik M	Jykira C	Kyle H	Willow M
Autumn H	Gus R	Kassie M	Luciana L	Wyatt R
Braiden M	Haley J	Kaylee M	Mekhai G	
Caleb S	Gus R	Kayli C	Melynda W	
Eleanor S	Haley J	Kyle H	Peyton M	
Elucia S	Harper M	Luciana L	Saydie L	
Emeline C	Jack W	Mekhai G	Sully H	
Emersyn W	Jazmynn D	Kassie M	Sweet H	
Emma H	Josiah D	Kaylee M	Tim M	



*Finishing Strong: Teacher
Tips for the Last Month of
School*



Keep Students Engaged

- Maintain high energy and enthusiasm in your teaching
- Use interactive activities and group projects to sustain interest
- Incorporate current events or pop culture into lessons when relevant
- How can you contribute to keeping the class engaged during this final stretch?



Balance Review and New Material

- Allocate time for reviewing key concepts from throughout the year
- Introduce small amounts of new material to maintain intellectual challenge
- Create comprehensive study guides for final exams
- What topics from this year do you feel need the most review?

Address Senioritis and Motivation



- Acknowledge the excitement and anxiety about graduation and future plans
- Set short-term goals to help students stay focused
- Offer words of encouragement and support
- Remind students of the importance of finishing strong for college and career readiness
- How can you motivate yourself and your peers to maintain focus?



Plan Meaningful Final Projects

- Design culminating projects that synthesize major concepts from the year
- Allow for creativity and personal interest in project topics
- Consider interdisciplinary projects that connect multiple subjects
- Incorporate real-world applications to demonstrate relevance
- What kind of final project would you find most engaging and valuable?



Prepare for Transitions

-
- Discuss post-graduation plans and offer guidance as needed
 - Provide information on summer learning opportunities or internships
 - Arrange for guest speakers from colleges or local businesses
 - Facilitate reflective activities on personal growth throughout high school
 - What are your biggest questions or concerns about life after graduation?



Celebrate Achievements

- Plan end-of-year activities to recognize student accomplishments
- Create opportunities for students to thank teachers and peers
- Organize a classroom awards ceremony or superlatives
- Encourage students to reflect on their growth and successes
- How would you like to commemorate your high school experience?



Other

- Other topics and/or questions?
- Next Process Improvement Meeting **on Monday, May 12th, 3:00 pm.**
- **Memorial Day is Monday, May 26th.** Please cancel your live class sessions to suit.
- MEVA **virtual** high school graduation on **Friday, June 6th at 2:00 pm.** MEVA **virtual** eighth grade recognition ceremony on **Friday, June 13th at 11:00 am.**
- Looking ahead, the Last Day of School is **June 13th.**
- PI Meeting Materials are posted at:
<https://www.mainevirtualacademy.org/essaesserlau-elresources/meva-process-improvement-meeting-materials>
- Thank you for all that you do to support your colleagues, your students, and their families.