

FRIDAY FLASH

Pine-Richland Middle School

April 11, 2025

In This Issue

- 8th Grade Parents
- PSSA Testing Reminders
- Spring Break Reminder
- Earth Day Event
- PRMS Shoe Drive

Quick Links

- [Pine-Richland Middle School](#)
- [Calendar of Events](#)
- [Daily Announcements](#)
- [Cafeteria Account](#)
- [Parent and Staff Association](#)

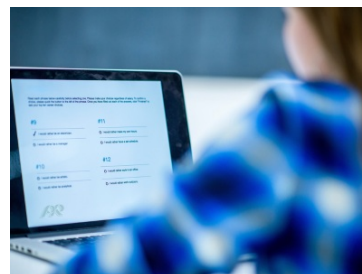
Attention 8th Grade Parents

The final meeting of the High School PTO is **Wednesday, April 30**, at 9:30 am in the PRHS Library. All 8th grade parents are welcome to attend.



PSSA Testing Reminders

Learn about the technology policy and other practices in preparation for upcoming PSSA testing beginning on **Tuesday, April 22**. Students arriving at 7:50 am or later on a testing day will not be permitted to test that day. Please avoid early dismissals before 10:00 am.



[Read More](#)

Spring Break Reminder

Spring Break begins on **Monday, April 14**. School will resume for students on **Monday, April 21**.



In Case You Missed It

Join Students at Earth Day Event

The entire community is invited to join our 6-School Sustainability Club at Pine Township's Earth Day Event on **Saturday, April 26**, from 11:30 am to 4:00 pm.

[Read More](#)



PRMS Shoe Drive

The PSA is hosting a shoe drive through the end of the school year. Any shoe, any condition! PRMS will receive money per pound of shoes to use for programming events and activities. A collection box is available in the entrance.



PSA No-Fuss Fundraiser

Support the PRMS PSA by donating directly. Our no-fuss "Un-Fundraiser" is the only fundraiser where 100% of your donation benefits PRMS students and staff.

[Read More](#)



Help Stock the Staff Lounge

The PSA tries to stock the lounge once a month, and with 80 staff, we could use your help! Drop donations in the office or order from our Amazon Wish List.

[Read More](#)



Reminders

- Friday Flash submissions are due Wednesdays at 8 am to prnewsletters@pinerichland.org.
- Applications for [Free and Reduced Lunch](#) must be submitted every school year.
- [Children's Health Insurance Program](#) information.
- Check the [Friday Flash Archives](#) for past information.
- [Review library book titles under 30-day public review](#).



You are receiving this communication because you opted in to email messages from Pine-Richland School District. To update your communication preferences, please click [Update Profile](#) below. If you received this from a friend and would like to subscribe, [you may do so here](#). To unsubscribe from **all** district communications, click the [unsubscribe](#) link below.

Pine-Richland Middle School | 100 Logan Road | Gibsonia, PA 15044 US

[Unsubscribe](#) | [Update Profile](#) | [Constant Contact Data Notice](#)



Try email marketing for free today!