

FRIDAY FLASH

Richland Elementary School

April 11, 2025

In This Issue

- Planet Aid Donations
- Staff Appreciation Week
- Flower Sale Volunteers
- Volunteer Opportunities
- Donate to Earth Day

Quick Links

- [Richland Elementary School](#)
- [Calendar of Events](#)
- [Breakfast and Lunch Menu](#)
- [Cafeteria Account](#)
- [Richland PTO](#)

Planet Aid Donations

It's time for spring cleaning! Drop off your outgrown and unused clothes, shoes, bedding, curtains, towels and bags in the yellow bin at the top of the parking lot.

[Read More](#)



Staff Appreciation Week Donations

We are celebrating Staff Appreciation Week starting on **Monday, May 5**. Please consider donating food, raffle items or a monetary donation to support the event.

[Read More](#)



Volunteers Needed to Unload Flowers

Sign up today to help unload the flowers for the Bloom Flower Sale. Volunteers are needed anytime from 11:00 am - 2:00 pm on **Wednesday, May 30**.

[Read More](#)



Volunteer Opportunities for Next Year

Are you interested in being involved next school year? There are plenty of opportunities available. If an event interests you but you're concerned about the time

commitment, please let us know!

[Read More](#)



In Case You Missed It

Donate to Earth Day

Even if you can't attend Earth Day at Pine Park, you can still contribute! Please consider sending one recyclable shopping bag to school by **April 24**. There will be a collection box in the lobby.



Morning Fit Club

Rise and shine! Are you ready to kickstart your day with a burst of energy and positivity? Join the Morning Fit Club! Sessions start on **Thursday, April 24**, at 8:00 am and run for six weeks before school.

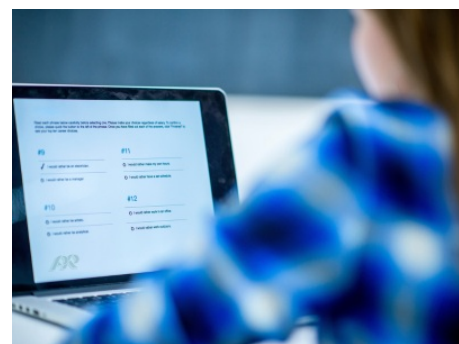
[Read More](#)



PSSA Testing Information for 3rd Grade

Third-grade PSSAs are scheduled for **April 22 to April 29**. Students are encouraged to arrive on time, get a good night's sleep, and bring wired headphones and a fully charged Chromebook on test days.

[Read More](#)



Take Your Child to Work Day

The National Take Our Daughters and Sons to Work Day is recognized on the fourth Thursday in April. Parents are encouraged to use April 24 or choose a date in the summer months.

[Read More](#)



Sign Up for Mileage Club

Mileage Club is back at Richland Elementary on **April 29 through May 29** to promote joy in movement and lifelong fitness. Each grade will run or walk around the track at recess, earning two hole punches each lap.



[Read More](#)

Join Students at Earth Day Event

The entire community is invited to join our 6-School Sustainability Club at Pine Township's Earth Day Event on **Saturday, April 26**, from 11:30 am to 4:00 pm.



[Read More](#)

Reminders

Save the Date

[Grade 3 Parents: EHUE Orientation](#)—
May 12 and 21

RAMS Way School Store

The school store will be back up and running through the end of the year. The PTO is in need of [volunteers to help students shop](#). Donate to the store through the [Amazon wishlist](#).

Save Chick-fil-A Receipts

Chick-fil-A receipts can earn our school rewards! Send receipts to your child's teacher, or email screenshots of mobile receipts to our treasurer at resptotreasurer@gmail.com.

Attendance

Every student starts each year with 10 parent-excused absences for educational trips or sick days that don't require medical intervention. After those 10 days, a medical visit is required with a medical excuse. [Learn more](#).

- Friday Flash submissions are due Wednesdays at 8 am to prnewsletters@pinerichland.org.
- Check the **Friday Flash Archives** for past information.
- [Review library book titles under 30-day public review](#).



communication preferences, please click [Update Profile](#) below. If you received this from a friend and would like to subscribe, [you may do so here](#). To unsubscribe from **all** district communications, click the unsubscribe link below.

Richland Elementary School | 3811 Bakerstown Road | Gibsonia, PA 15044 US

[Unsubscribe](#) | [Update Profile](#) | [Constant Contact Data Notice](#)



Try email marketing for free today!