

Hance Elementary School

April 25, 2025

In This Issue

- Message from the Principal
- Volunteer for Field Day
- Inclusive Open Mic Event
- Parent Feedback Requested
- Principal Quarterly Meeting

Quick Links

- [Hance Elementary School](#)
- [Calendar of Events](#)
- [Lunch Menu](#)
- [Cafeteria Account](#)
- [Hance PTO](#) & [Linktree](#)

Message from the Principal

This last quarter is one of my favorites because we really see students flourish and shine. There are also many opportunities for parents to volunteer and see firsthand how impressive our Hance family is.

[Read More](#)



Volunteer for Field Day

Grades 1 through 3 field day is on **Tuesday, May 14**, with Kindergarten on **Wednesday, May 15**. We're looking for 10 full-day helpers and five per grade level.

[Read More](#)



Inclusive Open Mic Event

Pine-Richland School District is partnering with Band Together to host an inclusive open mic event on **Saturday, May 17**. All ages and abilities are welcome.

[Read More](#)



Parent Feedback Requested

Please take a few minutes to complete an end-of-year

survey. The results will be shared at the final quarterly principal meeting on **Monday, May 19**.

[Read More](#)



Principal Quarterly Meeting

The final quarterly principal meeting of the school year is on **Monday, May 19**, at 10:00 am to discuss survey data and feedback for next year. Officer Dave and a few students will be in attendance to provide highlights from their year.

[Read More](#)



Volunteer for Staff Appreciation Week

Volunteer to help during Staff Appreciation Week from May 5 - 9. The HPTO is in dire need of volunteers for door decorating and recess coverage. There are also still available spots for lunch item donations.

[Read More](#)



HPTO Committee Sign Ups

Committee sign ups are open for next school year. Unfortunately, the ice cream social and other events are at risk of being canceled due to lack of volunteers. Please sign up to lend a hand if you are able.

[Read More](#)



After-School Playtime Volunteers

Volunteers are needed for the final two after-school playtimes. Anyone volunteering can have their student attend regardless of whether they attended in the fall.

[Read More](#)



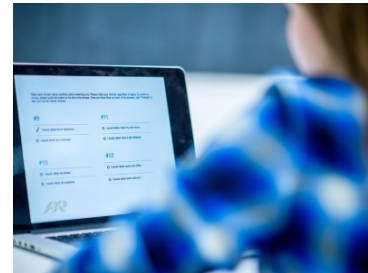
Plant Day Volunteers

The PTO needs your help on **Friday, May 9**. Please bring a spade and/or gloves if you have them at home. If you don't have any, they will be provided.

[Read More](#)

PSSA Testing Information for 3rd Grade

Third-grade PSSAs are scheduled through **April 29**. Students are encouraged to arrive on time, get a good night's sleep, and bring wired headphones and a fully charged Chromebook on test days.

[Read More](#)

Join Students at Earth Day Event

The entire community is invited to join our 6-School Sustainability Club at Pine Township's Earth Day Event on **Saturday, April 26**, from 11:30 am to 4:00 pm.

[Read More](#)

Book Swap Books Needed

Hance will be hosting a book swap in late May. Gently used books appropriate for grades K-3 can be dropped in the book collection box in the lobby.



Chick-fil-A Receipts

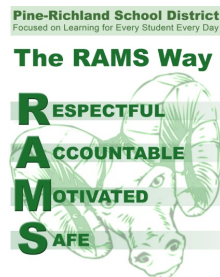
Turn in your receipts from either the Wexford or Cranberry Chick-fil-A locations and the PTO will receive 20% back to put towards a teacher luncheon.

[Read More](#)

RAMS Way Committee Wish List

We are seeking donations to be used during RAMS Way assemblies and to reinforce positive behaviors.

[Read More](#)



Cafeteria Volunteers

Our calendar is open for volunteers to help out for the remainder of the year. This is a great way to see your child in action and socialize with our students.

[Read More](#)



Reminders

- Friday Flash submissions are due Wednesdays at 8 am to prnewsletters@pinerichland.org.
- [Free and Reduced Meal Applications](#) must be submitted each school year.
- Check the [Friday Flash Archives](#) for past information.
- [Children's Health Insurance Program](#) information.
- Read our [Title I Right to Know](#) letter.
- [View the breakfast and lunch menus](#).
- [Review library book titles under 30-day public review](#).

You are receiving this communication because you opted in to email messages from Pine-Richland School District. To update your communication preferences, please click [Update Profile](#) below. If you received this from a friend and would like to subscribe, [you may do so here](#). To unsubscribe from **all** district communications, click the unsubscribe link below.



Hance Elementary School | 5518 Molnar Drive | Gibsonia, PA 15044 US

[Unsubscribe](#) | [Update Profile](#) | [Constant Contact Data Notice](#)



Try email marketing for free today!