

Full name:  
Grade and section:

## **7<sup>th</sup> Grade Assignment #1 Narrative Scene**

Directions: Read the excerpt from *The Narrative of The Life of Frederick Douglas*. Write in the next scene of the narrative telling the reader about a specific experience with Mrs. Auld. Before beginning your narrative, you must complete a narrative chart for your writing. Remember a narrative is written in first-person.

Length: Do not exceed two pages typed double-spaced.

### **What is narrative writing?**

Narrative writing is, well, writing narrative. Officially described as: writing that is characterized by a main character in a setting who engages with a problem or event in a significant way.

### **What elements should be included in the narrative?**

#### **Character**

Characters are an important part of a narrative essay. Even if the essay is autobiographical in nature, the person writing the essay is a character involving some other characters who act, behave, and do like all other characters presented in stories and novels.

#### **Dialogue**

Dialogue is used to capture the conversation between characters. In a narrative essay, dialogue is the third important element, without which the characters lose their worth and liveliness.

#### **Detail**

Narrative writing incorporates a lot of detail—adding details about the character, explaining a setting, describing an important object. Detail also includes any elements of the figurative language toolbox, such as simile, metaphor, or personification.

Full name:  
Grade and section:

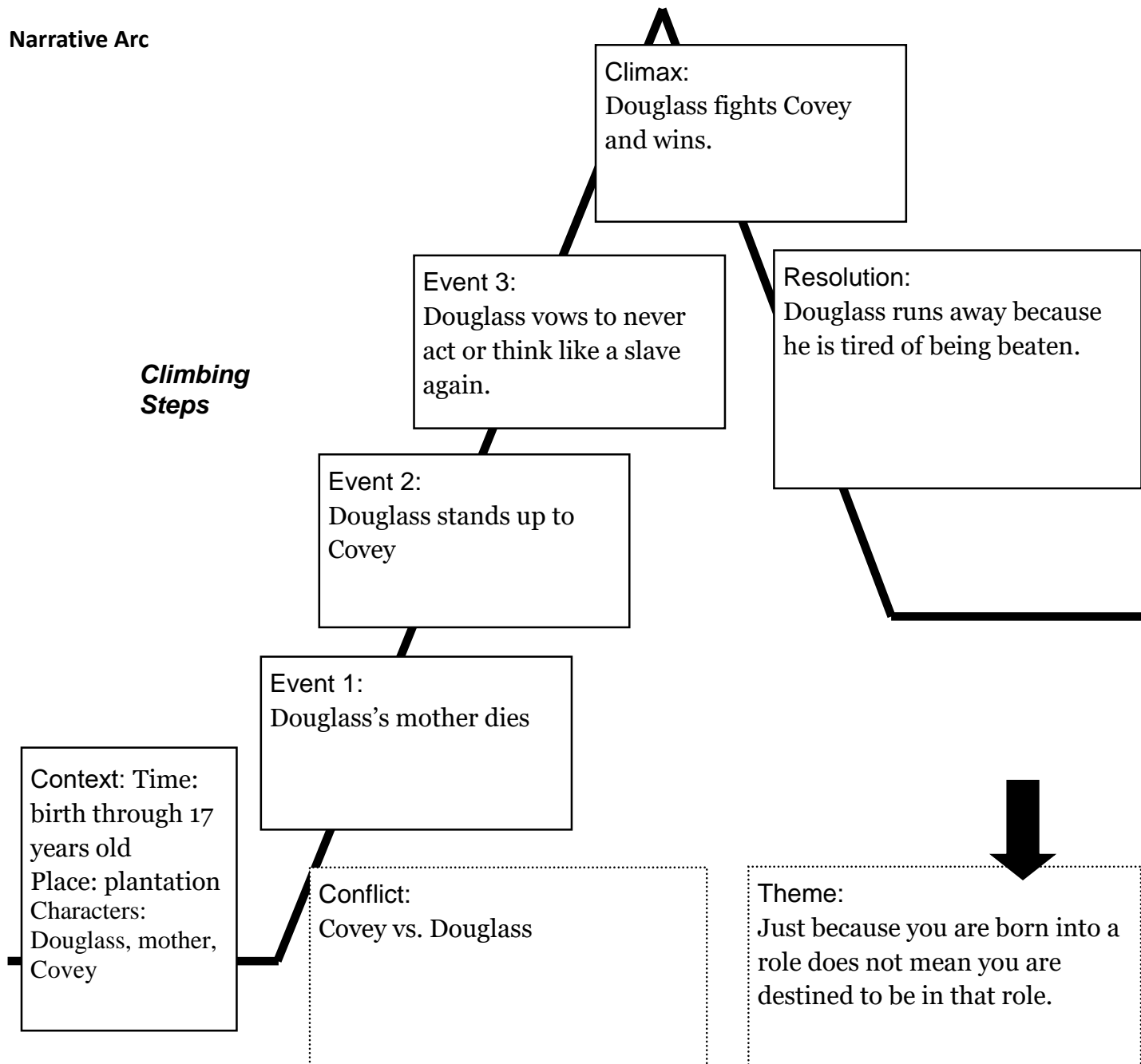
## Plot

The plot of the story involves a problem that the character must address or a main event that they need to navigate. Outlining the events and how they unfold will help students craft out the body of their story.

*Here's a model narrative. See if you can identify any narrative elements!*

<https://k12.thoughtfullearning.com/studentmodels/racist-warehouse>

## Narrative Arc



Full name:  
Grade and section:

**The essay has 2 components that must be done to receive full credit:**

- A completed plot outline – 50 points
- A typed or handwritten 5-paragraph essay – 50 points

**SOURCES FOR THIS ESSAY CAN BE FOUND IN REMIND IF YOU DID NOT TEAR THEM FROM YOUR WORKBOOK**



## Narrative Writing Rubric

Score	Focus & Organization	Development	Language	Conventions
50	<p>20 points</p> <ul style="list-style-type: none"><li>• effectively establishes a relevant context and point of view to engage and orient the reader and introduces a narrator and/or characters.</li><li>• utilizes effective organizational strategies to establish a sequence of events and/or experiences</li></ul> <p>that unfold naturally and logically, creating a smooth progression.</p> <ul style="list-style-type: none"><li>• contains an effective conclusion that reflects on the</li></ul> <p>narrated experiences or events.</p>	<p>15 points</p> <ul style="list-style-type: none"><li>• effectively utilizes relevant narrative techniques, such as dialogue, pacing, description, and reflection, to thoroughly develop experiences, events, and/or characters.</li><li>• effectively incorporates relevant, well-chosen details from the stimulus.</li><li>• effectively demonstrates a clear understanding of the task and stimulus by using relevant, well-chosen, descriptive details in order to convey a precise picture of the experiences, events, and/or characters.</li></ul>	<p>10 points</p> <ul style="list-style-type: none"><li>• illustrates consistent and sophisticated command of precise language, including sensory language, appropriate to the task.</li><li>• illustrates sophisticated command of syntactic variety for meaning and reader interest.</li><li>• utilizes sophisticated and varied transitional words and phrases.</li></ul>	<p>5 points</p> <ul style="list-style-type: none"><li>&gt;Uses consistent and sophisticated grade-level conventions of standard written English.2</li><li>&gt;Is error free as to not interfere with understanding what is written.</li></ul>

**How to submit your TYPED essay:**

Full name:  
Grade and section:

- >Go to [edugoodies.com](http://edugoodies.com)
- >click on “SCS email”
- >log in to your email (i.e. [123456@student.scsk12.org](mailto:123456@student.scsk12.org))
- >open a new Microsoft Word document
- >Go to “file”, “save as” and type in “Your Name”
- >Go back to the word document and start typing.
- >It should automatically save as you work if you need to stop and come back to it

- 
- >Click share in the upper right corner
  - >Put in email: [mcallistera@scsk12.org](mailto:mcallistera@scsk12.org)

---

Excerpt from *Narrative of The Life of Frederick Douglas*

My mistress was, as I have said, a kind and tender-hearted woman; and in the simplicity of her soul she commenced, when I first went

to live with her, to treat me as she supposed one human being ought to treat another. In entering upon the duties of a slaveholder, she did not seem to perceive that I sustained to her the relation of a mere chattel, and that for her to treat me as a human being was not only wrong, but dangerously so. Slavery proved as injurious to her as it did to me. When I went there, she was a pious, warm, and tender-hearted woman. There was no sorrow or suffering for which she had not a tear. She had bread for the hungry, clothes for the naked, and comfort for every mourner that came within her reach.

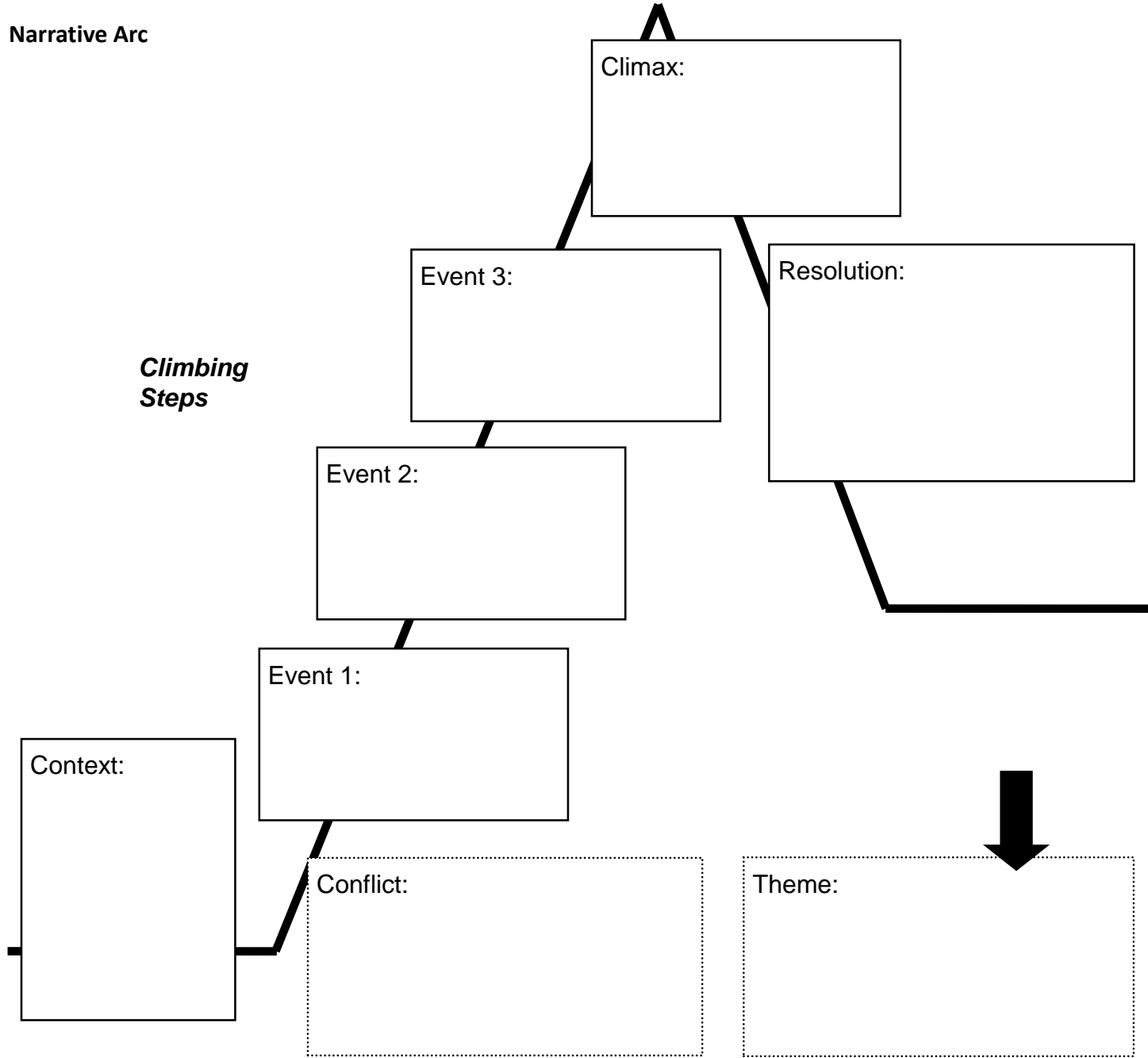
**(chattel**—tangible property that can be moved **injurious**—doing harm)

Slavery soon proved its ability to divest her of these heavenly qualities. Under its influence, the tender heart became stone, and the lamblike disposition gave way to one of tiger-like fierceness. The first step in her downward course was in her ceasing to instruct me. She now commenced to practice her husband’s precepts. She finally became even more violent in her opposition than her husband himself. She was not satisfied with simply doing as well as he had commanded; she seemed anxious to do better.

**Directions: Type your draft in the boxes below. 50pts**

Full name:  
Grade and section:

**Narrative Arc**



You may begin typing your narrative *here!* Don't forget to indent each paragraph.

Full name:  
Grade and section:

## 7<sup>th</sup> Grade Assignment #2 Reading Comprehensively

Directions: Read the following article. Write a four sentence main idea statement (GIST), and respond to the questions following the article.

# Why everything is closing for coronavirus: It's called "flattening the curve"

By Forbes, adapted by Newsela staff on 03.17.20 Word Count 1,035  
Level 1040L



Image 1. Authorities control a line of motorists waiting to be tested for coronavirus at Glen Island Park in New Rochelle, New York, March 13, 2020. Closing areas such as parks is an essential part of the social distancing needed to slow the COVID-19 outbreak. Photo: John Minchillo/AP Photo

South by Southwest (SXSW) is a huge music/film/tech/education festival. It brings hundreds of thousands of visitors to Austin, Texas, every March. When organizers canceled the festival it was only a matter of time before other major events also canceled.

As of March 13, many sports leagues have suspended their seasons. The National Basketball Association (NBA), National Hockey League (NHL) and Major League Soccer

Full name:

Grade and section:

have suspended play. Major League Baseball (MLB) has pushed back the season start. The National Collegiate Athletic Association (NCAA) canceled March Madness. March Madness is a college basketball competition every spring. If a team loses a game they are out of the competition. People fill out brackets with who they think will keep advancing to the championships.

Several universities have canceled spring football games. The Professional Golfers' Association (PGA) Tour canceled the Players Championship. And the future of the 2020 Summer Olympics in

This article is available at 5 reading levels at <https://newsela.com>.

Japan is in doubt. And that's just sports.

School districts from Seattle, Washington, to Baltimore, Maryland, have closed schools. So have entire states, including Maryland, Michigan and Ohio. More than 100 colleges and universities have canceled all in-person classes and moved online. The huge music festival Coachella has been postponed. So have a long list of concerts and music tours and all Broadway shows through April 12. Movie theaters may be next.

Even all Disney parks have closed their gates. This is only the third time Disneyland has closed the park. The first time was after U.S. President John F. Kennedy was assassinated in 1963. The second time was after 9/11. Terrorist attacks on September 11, 2001, hit the Twin Towers in New York and the Pentagon in Washington, D.C.

### **Economic Impacts**

The economic impacts of all these closures will be incredibly high. Canceling SXSW will mean a loss of more than \$350 million. This includes thousands of low-income workers' lost tips and wages. However, that won't even be close to how much it will cost sports teams and amusement parks to close down. So the decision to suspend seasons, cancel events and close up shop are not being made lightly.

And yet, there have only been about 1,660 cases of COVID-19 diagnosed in the United States. COVID-19 is short for coronavirus disease 2019. There have also been fewer than 50 deaths because of it in the United States. The coronavirus is a flu-like illness that began in China and has been spreading across the globe since December 2019.

Many people talk about the flu. Every year the flu sickens millions and kills tens of thousands of people. It is expected to sicken nearly 50 million people in the United States this year and kill as many as 52,000 this flu season.

Full name:

Grade and section:

So why is everyone making such a big deal about coronavirus? Why are events being canceled? Why are schools moving to online instruction? Especially when there are so few cases right now.

## Slowing The Spread

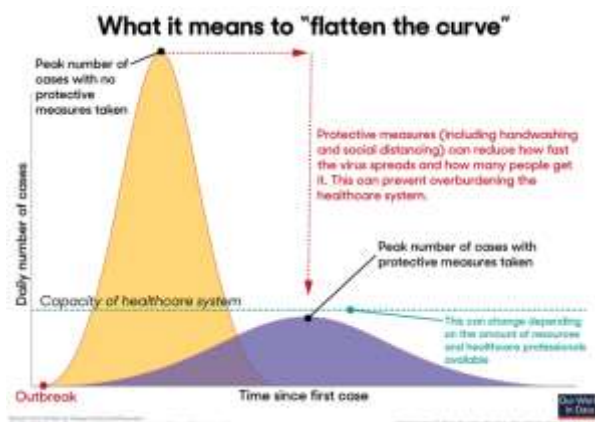
There's a good reason to "cancel everything." All these decisions by public officials and businesses are aimed at one goal: slowing down the spread of the virus to avoid overburdening a health care system that doesn't have the infrastructure to handle a sudden surge of tens of thousands of cases at once. Without mass closings, that surge is exactly what will happen, just as it has in Italy.

It's called "flattening the curve." And that's exactly what it is when you see it visually.

Epidemiologists study diseases and how they spread. They can somewhat predict how many cases of a disease are going to occur based on how the disease is behaving. Continuing business-as-usual allows cases to escalate rapidly in just a few weeks, spiking so high at once that they completely overwhelm hospitals. In such a scenario — such as Italy is facing now — more deaths are likely because there simply aren't enough hospital beds, enough face masks, enough IV bags, even enough healthy doctors and nurses to care for everyone at once.

However, if that same number of cases can be stretched out over months, never quite exceeding the health care system's capacity, then people will get the care they need. More health care

This article is available at 5 reading levels at <https://newsela.com>.



providers can avoid illness and burnout, and fewer people are likely to die — as South Korea has shown.

But are we really headed for that many cases? Yes.

Full name:

Grade and section:

As former Food and Drug Administration (FDA) commissioner Scott Gottlieb explained in a recent interview, the novel coronavirus — just declared a pandemic by the World Health Organization — is beyond containment. If it's not already in your community, it's coming soon. The only reason total U.S. cases aren't already skyrocketing is that coronavirus testing has been such a mess that too few people — just 77 by the Centers for Disease Control and Prevention (CDC) in the whole week of March 8 — are being tested. You can't count cases you haven't identified yet.

But every indication is that the United States is on track to see the same exponential increase other countries are seeing, as scientist Mark Handley has been tracking on Twitter.

### **People Are Listening**

So what do we do to avert disaster? We have to flatten the curve. Fortunately, people are listening and the idea has caught on so well among armchair epidemiologists that the #flatteningthecurve and #FlattenTheCurve hashtags have trended several times on Twitter in recent days.

Clearly, public officials and businesses are listening to the warnings of public health officials, as evidenced by all the closings and cancellations. But to be effective, ordinary people need to do their part by avoiding as much as possible any crowds and places where large numbers of people congregate, such as movie theaters, malls and events that haven't been canceled.

Main Idea Statement (GIST) *here!*

Full name:

Grade and section:

## Quiz

After reading each question carefully, **highlight**, *italicize*, or leave your response in **bold**.

1. 1 Which selection from the section "Slowing The Spread" BEST explains what epidemiologists mean by "flattening the curve"?
  1. (A) All these decisions by public officials and businesses are aimed at one goal: slowing down the spread of the virus to avoid overburdening a health care system that doesn't have the infrastructure to handle a sudden surge of tens of thousands of cases at once.
  2. (B) Epidemiologists study diseases and how they spread. They can somewhat predict how many cases of a disease are going to occur based on how the disease is behaving.
  3. (C) The only reason total U.S. cases aren't already skyrocketing is that coronavirus testing has been such a mess that too few people — just 77 by the Centers for Disease Control and Prevention (CDC) in the whole week of March 8 — are being tested. You can't count cases you haven't identified yet.
  4. (D) But every indication is that the United States is on track to see the same exponential increase other countries are seeing, as scientist Mark Handley has been tracking on Twitter.
2. 2 Read the following claim.

*The coronavirus outbreak will cause tremendous economic losses.*

Which sentence from the article provides the BEST support for the above statement?

1. (A) When organizers canceled the festival it was only a matter of time before other major events also canceled.
  2. (B) School districts from Seattle, Washington, to Baltimore, Maryland, have closed schools.
  3. (C) However, that won't even be close to how much it will cost sports teams and amusement parks to close down.
  4. (D) It is expected to sicken nearly 50 million people in the United States this year and kill as many as 52,000 this flu season.
3. 3 How did the availability of testing affect the number of reported COVID-19 cases in the United States?
    1. (A) The lack of testing has led the number of reported cases in the United States to decrease significantly in the last two weeks.
    2. (B) The availability of testing has led to a number of reported cases that experts believe accurately reflects the spread of the virus.
    3. (C) The lack of testing has led to a number of reported cases that experts believe does not reflect the true spread of the virus.
    4. (D) The availability of testing has caused the number of reported cases to increase faster in the United States than in other places.
  4. 4 WHY are epidemiologists worried about a spike in the number of COVID-19 cases in the United States?
    1. (A) It would cause tremendous economic and business losses.
    2. (B) The U.S. health care system does not have the supplies or personnel to manage it.
    3. (C) It would result in the spread of the virus to neighboring countries.
    4. (D) The U.S. health care system is well prepared to manage a sudden increase in patient numbers.