

DRAFT For Discussion Only



# PONTIAC REIMAGINED

Phase 1



# Pontiac Schools Reimagined



## Phase 1 Overview

- PEACE Relocation Process
- WHRC Reimagined Phase 1 Floorplan
- Curriculum
- Transportation
- Staffing
- Applications and Inspections
- Ceasing Operations at 723 Cottage
- PEACE Relocation Budget
- Bond Basic Budgetary Review
- Potential Future Projects
- Pictures

Educate!

Empower!

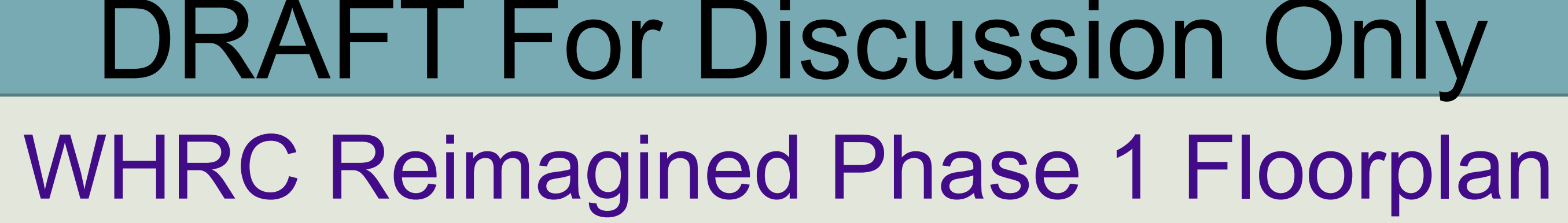
Excite!



# DRAFT For Discussion Only

## PEACE Relocation Process

- ❑ Bid pack for moving will have to be released near end of April. Sachse is working on the Bid Docs anticipating BoE approval by that time.
- ❑ Move 6 Classrooms residing at WHRC back to Herrington Elementary
- ❑ Relocate 2 SEA Classrooms from WHRC to Rogers Elementary
- ❑ Relocate 2 SEA Classrooms from WHRC to Herrington Elementary
- ❑ Shuffle Internal ITA/ILA Classrooms
- ❑ Pack, Move, Unpack PEACE to WHRC





# DRAFT For Discussion Only

## Curriculum

Obtain information from Dr. Devezin and Principals Harris, Karaffa, and Charaman

-Board decision needs to be made to increase classroom capacity to 18 student.  
This opens up additional funding for PEACE from OS.





# DRAFT For Discussion Only

## Transportation

Obtain information from Tonya Dixson and Audra Kyles

- Routes
- Costs
- Drop Off/Pick Up Schedules
- 5 day attendance is proposed for PEACE
- GSRP is State of Michigan funded
- Food Service is Federally funded

“PEACE is currently 5 minutes or less away from WHRC. For now, they will remain on the same bell schedule, pick up/drop off will be all around town because it is centrally located”



# DRAFT For Discussion Only

## Staffing

Obtain information from Ashley Smith, Nicole Harris, Dr. Devezin

Teachers

Support Staff

Custodial

Food Service

PAO

Administration

???



# DRAFT For Discussion Only

## Application and Inspections

IDS has already been engaged to review Compliance and Regulatory Statutes

- No significant findings were discovered to prevent PEACE relocation to WHRC. Of note, we will need to install Carbon Monoxide detectors in each classroom \$45ea. with 10 yr battery=\$900)
- 7 Project Based Learning Components and 4 Quadrants
- Student Application for ITA/ILA needs to be available online





# DRAFT For Discussion Only

## Cease Operations at 723 Cottage

- Determine furniture and equipment that is useful and can be utilized elsewhere in the district
- Final Cleanup after building is vacated
- Spin down as much utility utilization as possible
- Keep cameras, fire, and burglar alarms active
- Schedule regular check ins for security and operations
- Decide what to do about Boiler system that needs repair/replacement

Determine future usage of building and property



# DRAFT For Discussion Only

## PEACE Relocation Budget

IDS Design and Compliance Review	\$ 9,540.00
Basic Furniture (Kaplan)	\$ 46,862.88
Full Classroom (Lakeshore Learning)	\$ 401,152.74
Packing Supplies and Relocations	\$ 80,000.00
Playground Equipment, Install and Inspection	\$ 150,000.00
Child Care Center Licensing and Inspections	\$ 1,000.00
Building Modifications	\$ 100,000.00
Total	\$ 788,555.62





# DRAFT For Discussion Only

## Bond Basic Budgetary Info Review (estimates)

BF=Bond Funds, GF=General Funds, SF=Sinking Funds

	<u>BF</u>	<u>GF</u>	<u>SF</u>
Current BF Cashflow (4/4/25)	\$ 691,373		
GF used to cover Bond Projects			
Feb 12, 2025		\$ 500,000	
Feb 27, 2025		\$ 450,000	
March 6, 2025		\$ 950,000	
March 13, 2025		\$ 1,230,000	
Total (will be replenished by BF)		\$ 3,130,000	
Sinking Fund Audited Cash Balance			\$7,600,000
Property Taxes			\$3,000,000
Maintenance Costs			\$ 500,000
Transfer from SF to BF	\$ 5,000,000		\$5,000,000
Replenish General Fund	\$ 3,130,000	\$ 3,130,000	
Anticipated BF Series III Proceeds	\$17,600,000		
PEACE Relocation	\$ 788,555.62		
Current Bond Project Projected Costs	\$14,216,656.80		
Total Available for future projects	\$ 5,156,160.60		\$5,000,000



# DRAFT For Discussion Only

## Potential Future Projects (estimates)

BF=Bond Funds, SF=Sinking Funds

	<u>BF</u>	<u>SF</u>
Total Available for future projects	\$5,156,160.60	\$5,000,000
Transfer from SF to BF	\$1,000,000	<b>\$1,000,000</b>
Relocation of Transportation to PHS Complex	<b>\$ 3,500,000</b>	
Natatorium Reimagined as Robotic/Event Space	<b>\$ 1,515,314.40</b>	
FROST Elementary Boiler Replacement	<b>\$ 350,000</b>	
Maintenance Pole Barn	<b>\$ 400,000</b>	
Total Available for future projects	<b>\$ 390,846.20</b>	<b>\$4,000,000</b>





# DRAFT For Discussion Only

## Pool Equipment PrePurchase

Approx \$125K

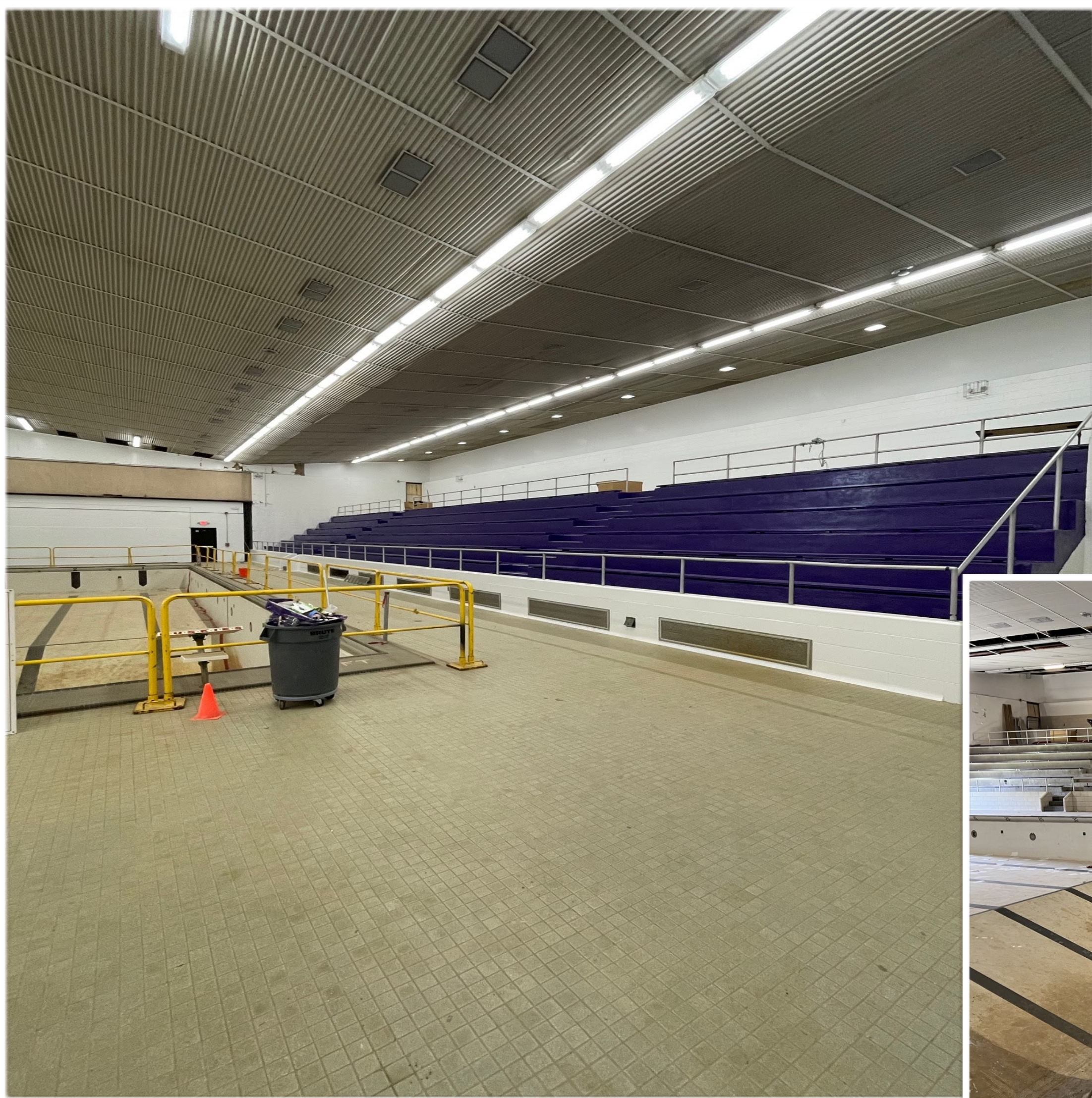






# DRAFT For Discussion Only

## Current Pool



**SWIMMING POOL RULES**  
TALKING TO LIFEGUARDS.  
GUM OR FOOD IN POOL.  
RUNNING, PUSHING, SPLASHING  
OR HORSEPLAY.  
HANGING ON LIFE LINE.  
CALLING FOR HELP UNLESS NEEDED.  
CARRYING EQUIPMENT IN POOL  
RING OPEN SWIM.





# DRAFT For Discussion Only

## Future Robotics/Events Center Concept







# DRAFT For Discussion Only

## Current Fell Center

