



ARTIFICIAL INTELLIGENCE IN NORTHSHORE

Shelby Reynolds
Assistant Director,
Instructional Technology and
Library Services
sreynolds@nsd.org

AI OR HUMAN-GENERATED?



AI OR HUMAN-GENERATED?

"The Great Gatsby" by F. Scott Fitzgerald follows the life of Jay Gatsby, a wealthy and mysterious man who throws extravagant parties at his mansion in West Egg, Long Island, during the 1920s Jazz Age. The story is narrated by Nick Carraway, who becomes Gatsby's neighbor and is drawn into his world of wealth and ambition.

Gatsby is deeply in love with Daisy Buchanan, Nick's cousin, who is married to Tom Buchanan, a wealthy but arrogant man. Gatsby and Daisy had a romantic history before she married Tom. Gatsby's lavish parties are an attempt to attract Daisy's attention and win her back.

As the story unfolds, secrets about Gatsby's past and his rise to wealth are revealed. Despite Gatsby's efforts to recreate the past and win Daisy's love, their relationship faces challenges and ultimately tragedy strikes. The novel explores themes of the American Dream, the corrupting influence of wealth, and the illusions of the past.

"The Great Gatsby" is about a guy named Jay Gatsby who's super rich and throws crazy parties. He's in love with a girl named Daisy, but she's married to another rich guy named Tom. Gatsby wants Daisy back, so he tries to impress her with his parties and stuff.

The story is told by Nick, who lives next to Gatsby. As Nick gets to know Gatsby, he learns that Gatsby wasn't always rich and that he has a mysterious past.

Gatsby and Daisy start seeing each other secretly, but things get messy. Tom finds out and confronts Gatsby. There's a big argument, and things go downhill from there.

In the end, there's a tragic accident involving Daisy, Gatsby, and Tom's mistress. It's a story about love, wealth, and how things aren't always what they seem.



Introducing Sora — OpenAI's text-to-video model



Share



Watch on  YouTube

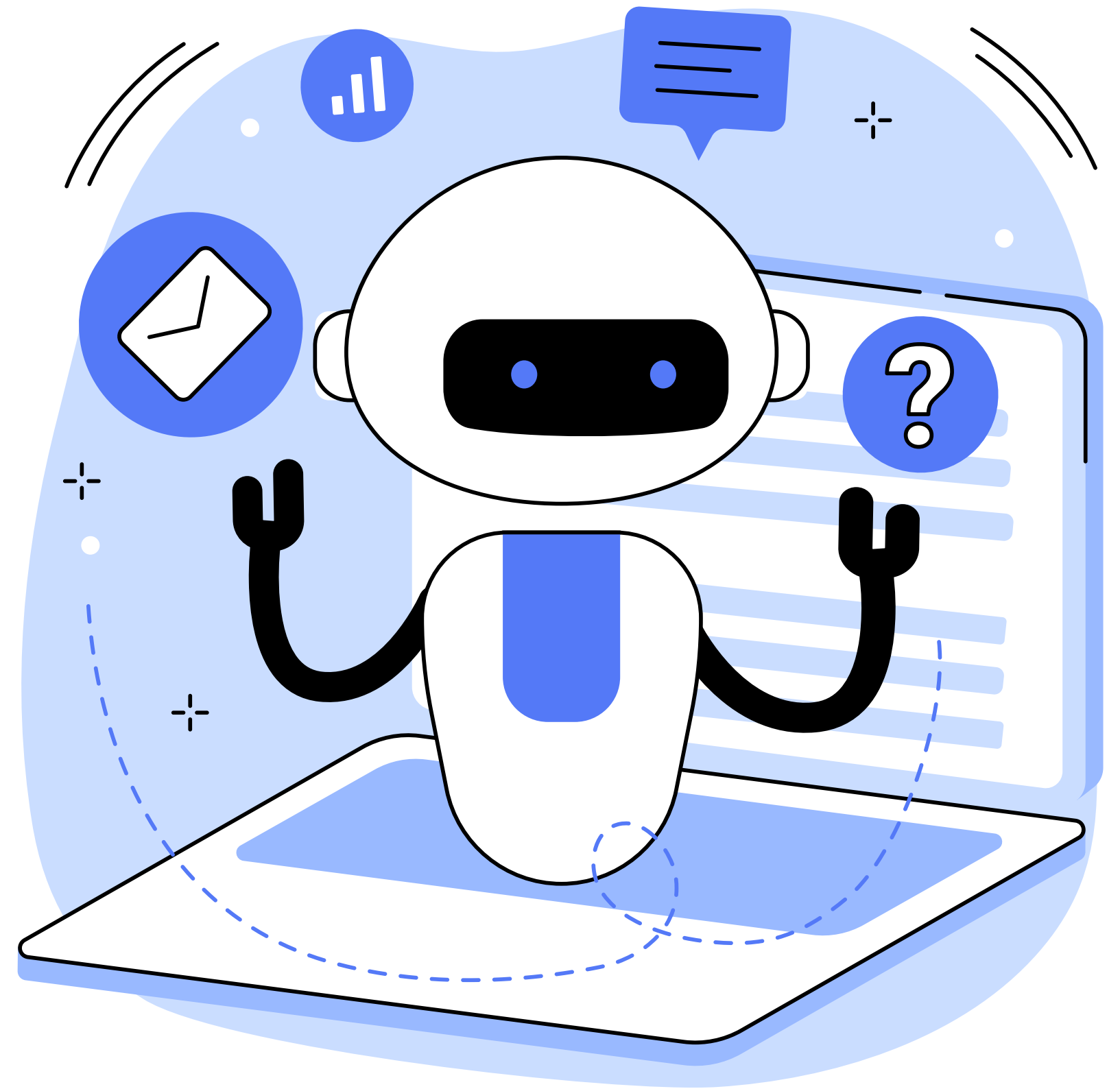
TOPICS



- 1** What is Artificial Intelligence?
- 2** How do we use AI in NSD?
- 3** What problems can AI pose?
- 4** How can we help students use AI?
- 5** Resources and tips for Families

WHAT IS ARTIFICIAL INTELLIGENCE?

Artificial Intelligence (AI) is the use of computer systems to simulate human mental processes, such as interpreting and generating language.



EXAMPLES OF ARTIFICIAL INTELLIGENCE

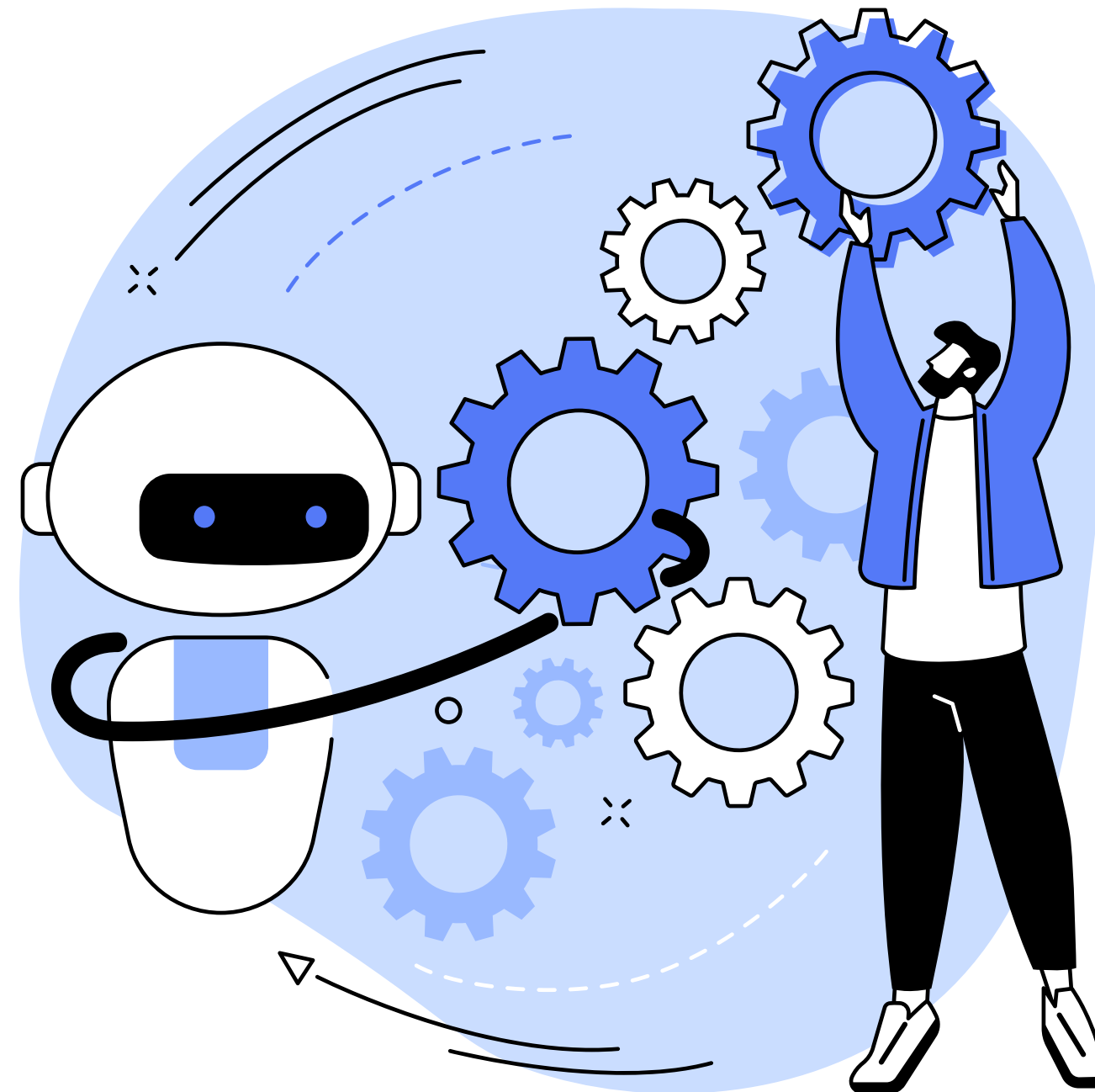
Chatbots

Smart assistants

E-Payments

Search algorithms

Media streaming



Smart cars

Navigation apps

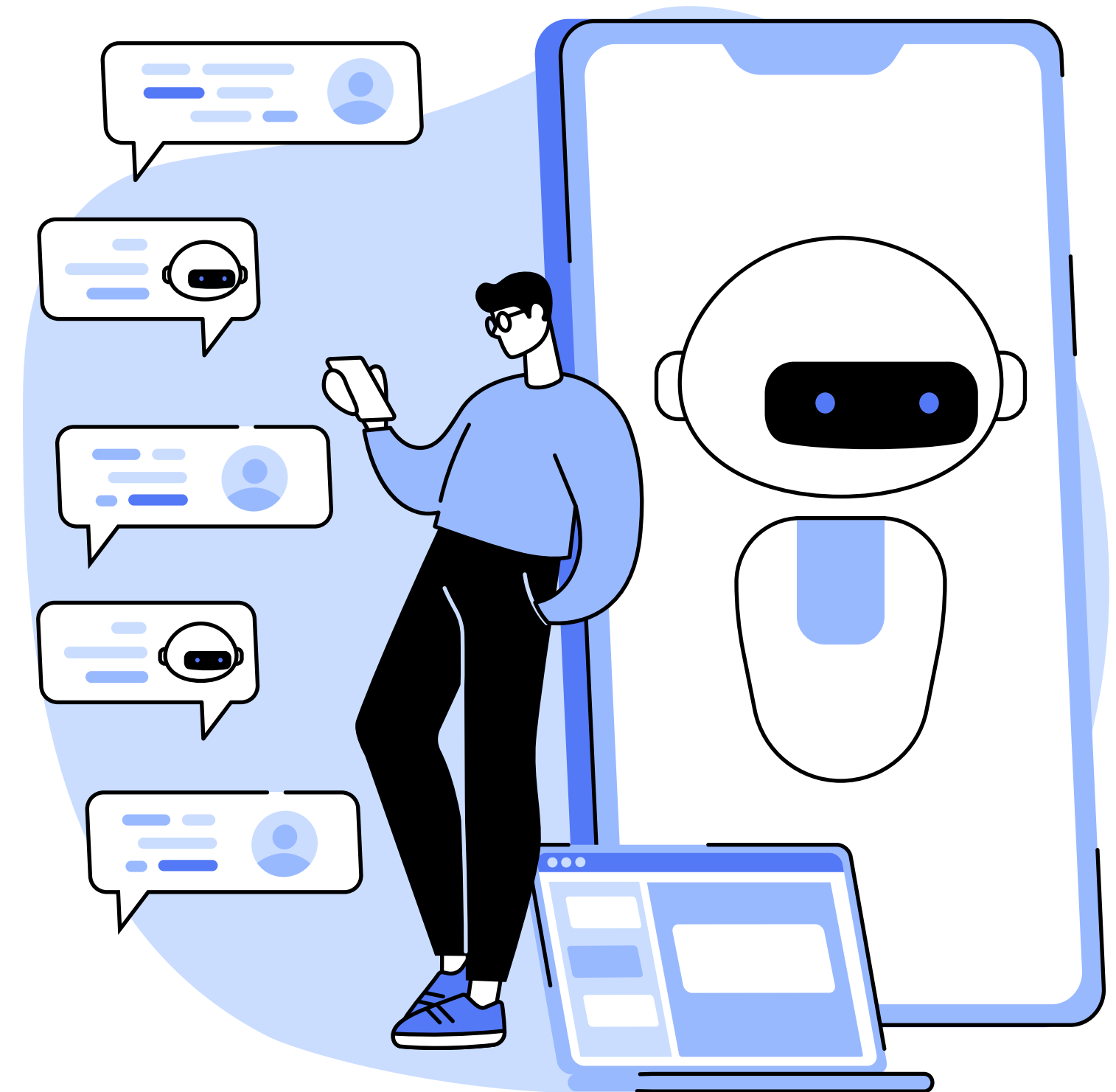
Facial recognition

Text editors

Social media feeds

EDUCATIONAL USE

There are many exciting applications of **AI-Language Models** in the Education space. Let's take a look at some of them.



PRACTICAL USES OF ARTIFICIAL INTELLIGENCE IN EDUCATION

Conversation practice

Students can engage in conversational exchanges with LMs to improve their speaking and listening skills.

Vocabulary development

LMs can provide examples of vocabulary in context, and offer explanations and definitions.

Writing practice

LMs can help students improve their writing skills by giving them writing prompts and feedback.

Math instruction

LMs can provide explanations of algorithms and show steps in problem solving.

LM = Language Model

PRACTICAL USES OF ARTIFICIAL INTELLIGENCE IN EDUCATION

Teaching support

Teachers can use AI to create personalized learning materials for students based on strength and need.

Feedback & grading

AI can provide feedback to students in real time, saving teachers time to work more intensively with individuals.

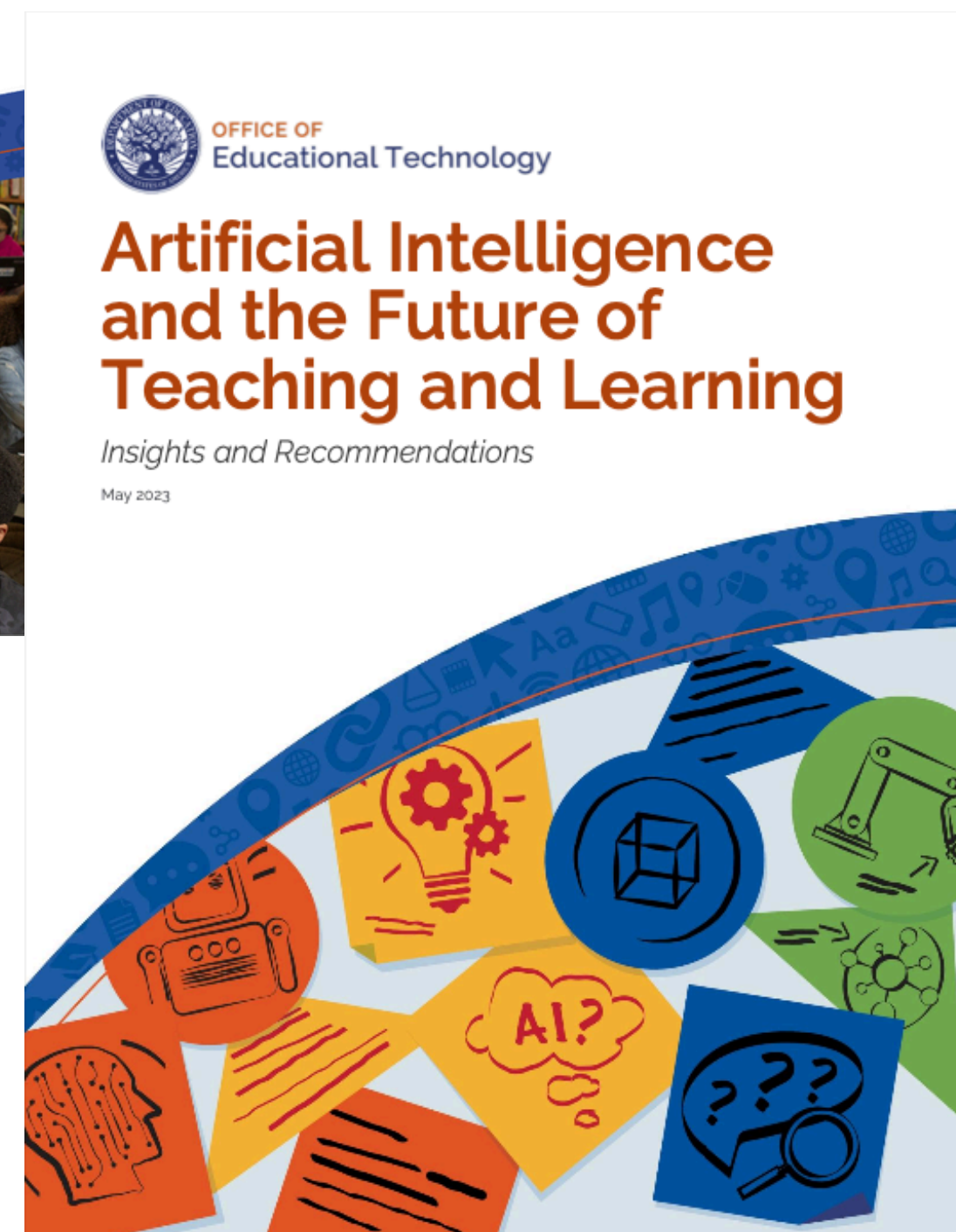
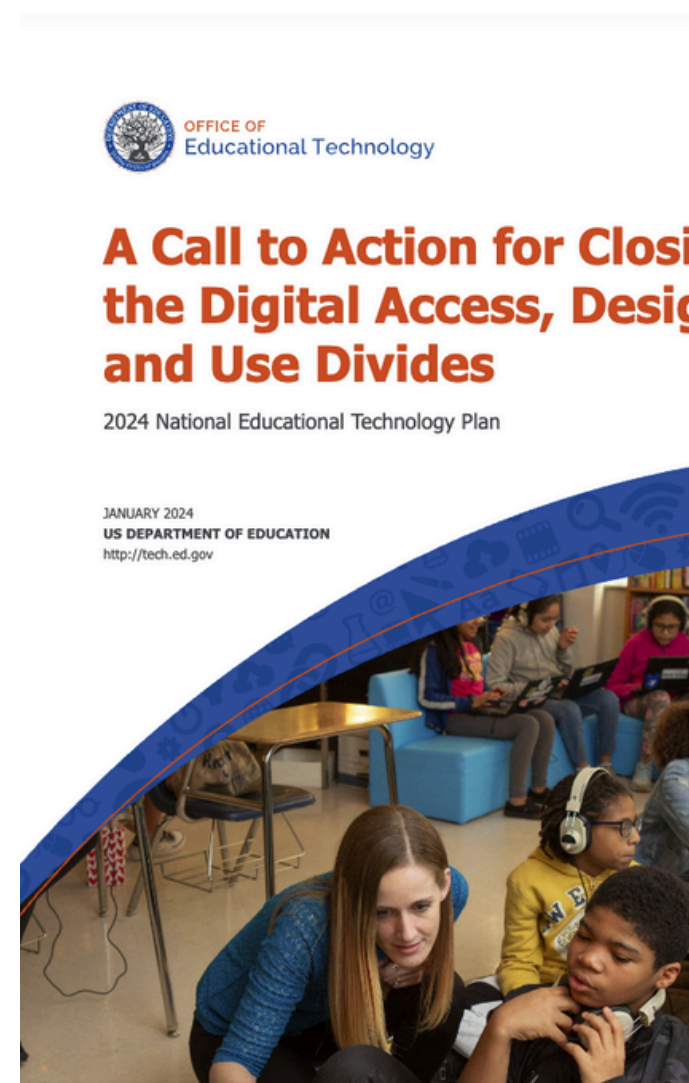
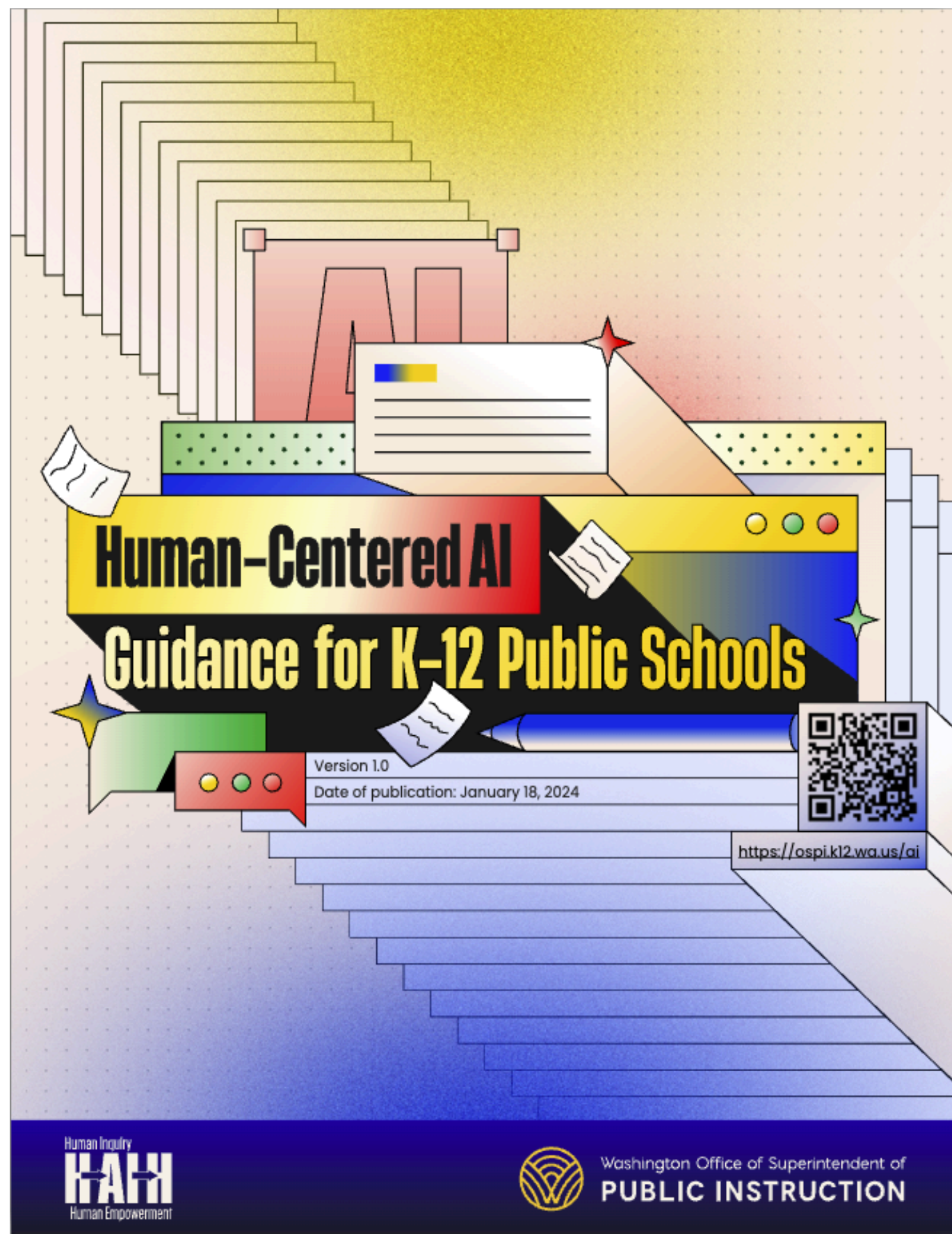
Tutoring

Chatbots can provide students who need extra support or enrichment tutoring to support their needs.

Text to speech

AI can take spoken word and turn it into written language to support students with language or motor challenges.

LM = Language Model





GUIDANCE IN NSD

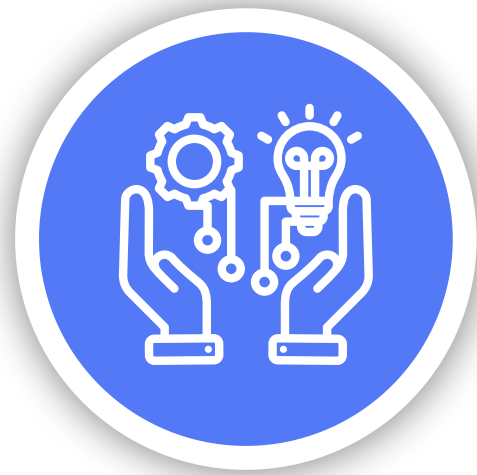
Task Force convened in Spring 2024 at the direction of the Superintendent and Board

Teachers, Principals, Librarians, STSs, and Teaching and Learning Representatives

Areas of Focus:

- How should AI be used to benefit student learning?
- How can we use AI safely and ethically?
- How can we use AI to create efficiencies?
- How should we deal with misuse of AI?
- What guidance has been published by OSPI?
- How does this integrate with Responsible Use and Student RR?

GUIDANCE CORE IDEAS



Staff Use of AI

Guidance for how staff can and should use AI to do administrative tasks, personalize learning for students, and create teaching materials.



Student Use of AI

Guidance for how students should use AI carefully and with permission and supervision within the context of learning.



AI and Academic Integrity

Proactive guidance to reinforce academic integrity. And when there are questions of academic integrity, what to do about it.



AI and Ethics

Use of AI and copyrighted materials, reinforcing protection of student data and privacy.

STAFF USE OF AI



Keep Student Data Secure

Staff should never put private or sensitive information into an AI system without first making sure that it complies with federal and state laws.



Protect Copyrighted Content

Unless you have permission from the publisher, don't put copyrighted material into an open AI tool that may use the data to inform the model.



Understand that AI is Biased

LLMS are trained on large amounts of data, which are inherently biased. Question any AI output, verify sources, and think critically.



Human in the Loop or Human-Centered

Any interactions with AI should start and end with human interaction. AI tools can inform, but should not be the decision makers with students.



Use AI to Enhance, Not Supplant, Instruction

Use AI to personalize learning for students and create efficiencies. AI will not replace quality teaching and human interaction.

STUDENT USE OF AI

Use AI Ethically and In Concert with 2022P

Students should not use AI to gain an unfair advantage, create works that are not their own, or use it to create likenesses of others.

Understand the Limitations of AI

Students should be aware of the inherent biases in AI outputs and that AI is not always accurate in its reporting of facts. And it is bad at math.

Keep PII Away from AI

Students should not input personally identifiable information into AI tools, including full name, age, phone number, address, etc.

Use AI with Permission and Use Attribution

Students should use AI only when permitted by a teacher for use in coursework. Always indicate the use of AI as a resource.

Do Not Dump Copyrighted Content into AI

Most AI models use inputs to train the LLM model and since we do not own the copyright for textbooks and other things, students should not enter that material into AI.



AI IS NOT...

...going to replace teachers.
...going to solve every problem.
...going away.



PILOT FALL 2024



MagicSchool

ChatGPT style tools for teacher productivity. MagicStudent adds the ability for teachers to make a chatbot on a topic for students to use.



Skill Struck

Teacher-configured chatbots built on topics or standards with “personalities” of famous people, scientists, explorers, etc.

HOW CAN WE HELP STUDENTS USE AI?

As **Language Models** improve, it can be helpful for educational staff and families to understand and use these tools and help their students learn how to use them effectively.



ARTIFICIAL INTELLIGENCE IN NORTHSORE

Guidance

Policies

Tools

Filtering

Curriculum



Ethics

Data Privacy

Equity

Costs

Prof Learning



It's natural for children to be curious about the latest popular AI programs. As these tools become more widespread, it's important to talk with kids about responsible and appropriate tech use.

Helping Kids Navigate the World of Artificial Intelligence

Ways to explore the latest tech with children and guide them to use new tools responsibly.

Topics: [Learning](#) [School Technology](#)



Teaching Kids to Protect Their Data and Privacy Online

Tips for kids and teens to keep their information safe and private when they use tech.

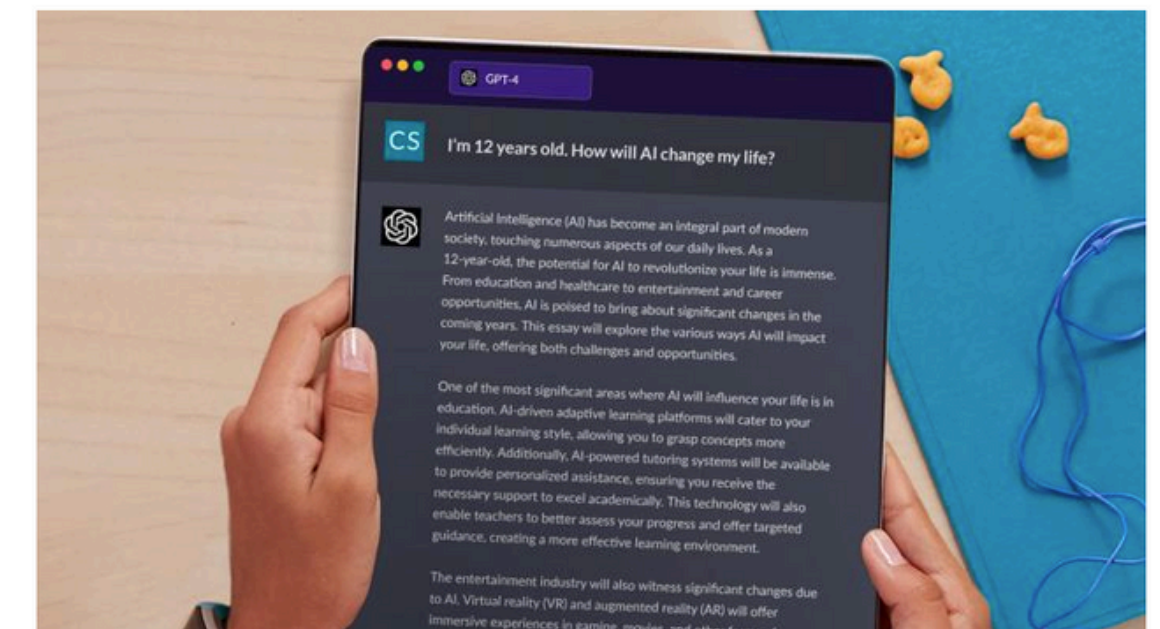
Topics: [Online Safety](#)



We Need Rules and Ratings to Maximize the Potential of Generative AI for Kids

Parents and kids are optimistic about AI, but want guardrails to minimize its harmful impact.

Topics: [COPPA](#) [Federal Legislation](#) [Online Privacy and Safety](#) [Research and Studies](#)
[Teaching with Technology](#) [Technology in the Classroom](#) [Common Sense News](#)



WHEN USING AI WITH YOUR STUDENTS

Bias

How might this result be biased by the data it uses?

Accuracy

How can we verify the accuracy of this information?

Appropriateness

Is it appropriate to use AI to help us do this work?

Ethics

How much of this work is your own and how much is AI?

Policies

What do the terms of use say about age of users?

Privacy

What does this AI tool do with my data?

Prompts

How can we refine our skills in prompting AI to get the best result?

Collaboration

How can we use this tool together to learn more?



THANK YOU!

Shelby Reynolds
Assistant Director,
Instructional Technology and
Library Services
sreynolds@nsd.org



ARTIFICIAL INTELLIGENCE IN NORTHSHORE

Shelby Reynolds
Assistant Director,
Instructional Technology and
Library Services
sreynolds@nsd.org