

POLARIS



1950

Worth McCarrey

Much happiness to
small guy; I really think
he would of you if act
maintain those high ideals.
A friend always,
C. Leon
Morse



Dear Worth, to a Seminary
Success you will succeed
buddy. You will succeed
in many things I am sure.
It has been fun knowing you.
Be good
Peggy D.



Dear Worth.

Dear W.B. Wright,

I have certainly enjoyed
your friendly companionship
in English this year. I really
think you are tips. Good
luck in all you strive
to do, be very good

73 n.c. p.1

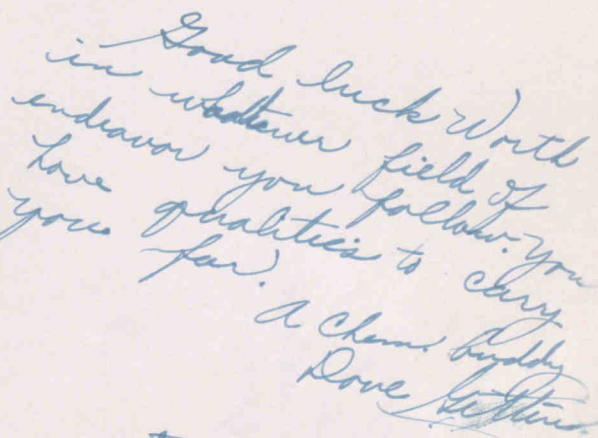
Garro Godfrey

Roads of Luck &
 Success to a sweet
 guy. you'll go far in
 Life.
 a N. C. Pal
 Eloise Christensen

Dear Worth,
It's really been swell
knowing you this year.
You're a swell guy.
God bless you and all
the success in the world.
A N.C. pal
Ruth

Dear Mr. Friend
I have just received your letter
and am glad to hear from
you. I am well and hope
this finds you the same.
I am, Sir, very respectfully,
Your friend,
Wm. H. H. H.

Don't like it



SCHOOL

AH

LENE MEYER
CE HILLYARD
DEE HILL
ALD BOWLES
Y TAGGART
HENDRICKS

Dear World
I miss you much
and hope you are
happy and well.
I am your friend,
L.V.D.

RICHMOND --- UTAH

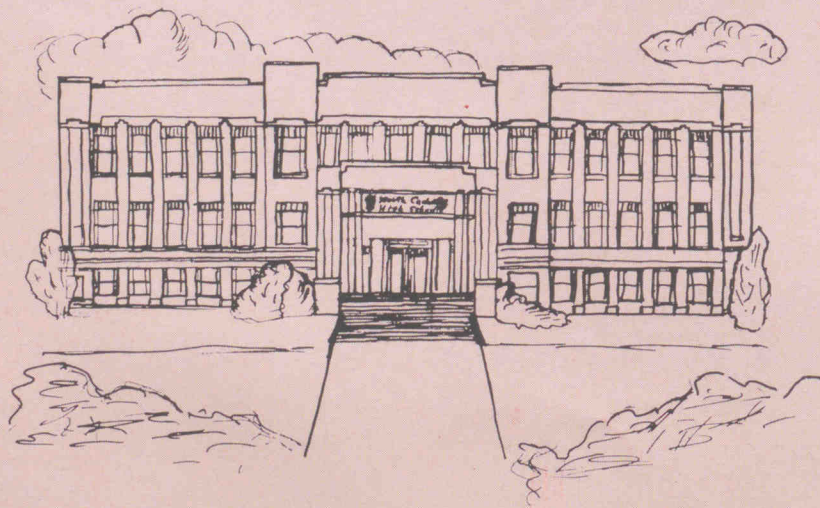
ART CITY PUBLISHING CO.
Springville, Utah

SCHOOL SONG

Here's three cheers for North Cache
 We'll give you a hand.
 May your brilliant colors,
 On the hilltop stand.
 With a rock foundation
 Far shall go your fame.
 Norcachians thrill with pride,
 Whene'er they hear your name!

Maroon and White! Which stands for might,
 And to the band—best in the land. Rah!
 Fight, fight, fight! For our team, our team,
 We'll fight!

Long will we love thee,
 Here's to a toast.
 And may your praises
 Ring from coast to coast.
 Boosting, yes, boosting,
 We'll never stop.
 And we'll keep North Cache
 Right at the top.
 Yea, Rah!



*Maroon and White
 Its colors well
 Braving you, leads
 of lead to a real fight
 Yella*

*Maroon and White
 Its colors well
 Braving you, leads
 of lead to a real fight
 Yella*



"OUR ALMA

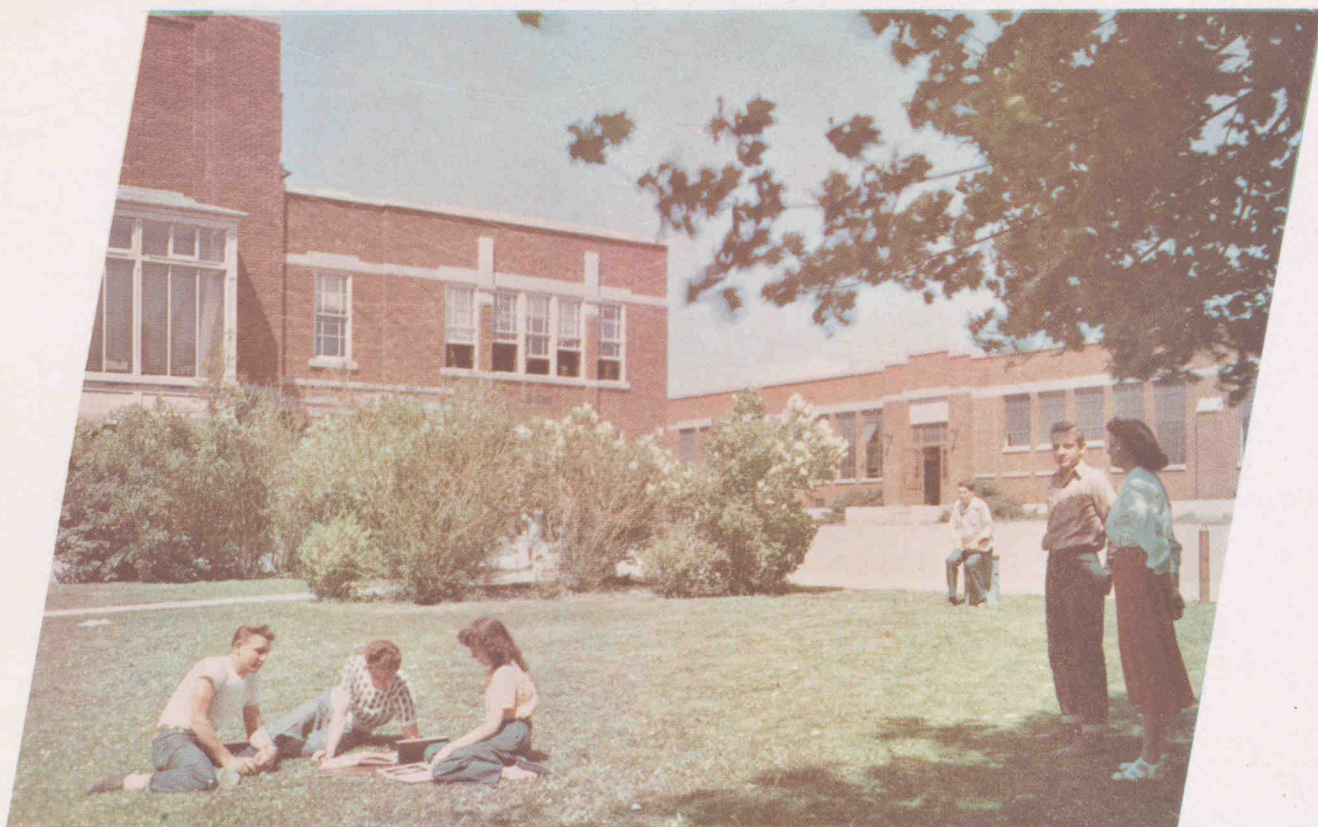
Four



MATER GRAND"

Five

Don't do this.



KNOWLEDGE

Situated on a hillside overlooking the valley, the familiar brick walls, the spacious lawns, the beauty of the willow trees, the maples, and the plum trees make this a happy place in which to learn and grow.

As portrayed in each season of the year, the simplicity and beauty of our campus will be remembered always by the students who know and love it.

Never to be forgotten are the days spent strolling through the campus, meeting in the halls, and working together in the classrooms of dear old North Cache High . . . where we gathered together in gangs to discuss dances, games, studies and examinations, which are all part of our education.

Not all of us were "A" students, but still we feel that we can now more efficiently face the problems of life and higher learning . . . so we say our days at North Cache were well spent.

IS POWER



Dear Worth,

It has indeed been a pleasure
knowing you and I hope we can
continue our friendship. Mrs.
wishing a good kid lot of luck
a friend - Wilford Jones

ADMINISTRATION

Faculty . . .

Helpful Understanding

Friendly Progressive

Board of Education . . .

County executives working for the
interest of all the schools

Student Body Officers . . .

Student representatives

Leaders in school activities

Student Government . . .

Executive Council Student

Council . . . Student Court

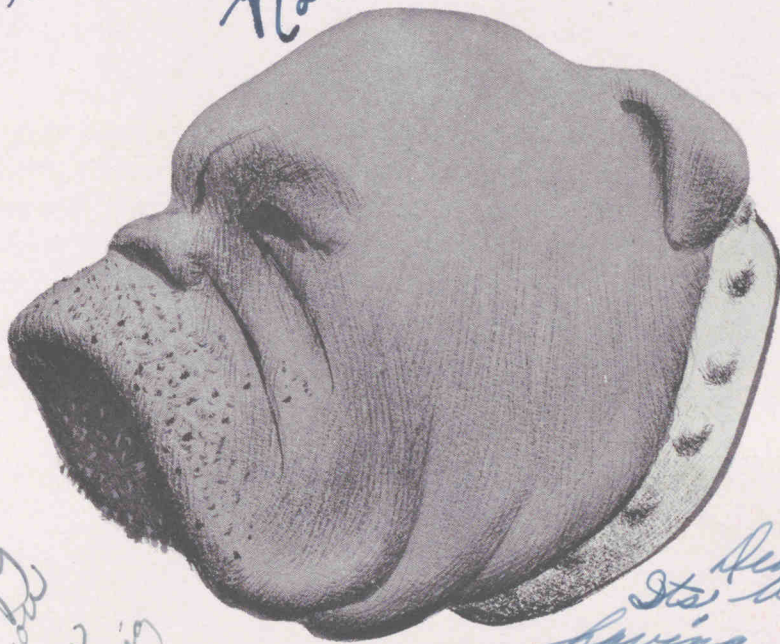
Girls' and Boys' League . . .

Include all students

Foster fellowship

Dear Worth
 I have enjoyed your
 friendship and being
 a classmate in physiology
 very much. I hope it will
 continue. Here's wishing you
 a life full of success and happiness.
 a N.C. pal
 Norris Cooley

Dear Worth
 it has been fun working with you
 this year. I probably see you in college
 so we won't go into much detail
 will see you
 a friend always
 James Pond



Dear Worth,
 Good luck to
 a physiology
 pal. May you
 have success
 in everything
 you do.
 a pal
 Virginia
 Jensen

Dear Worth,
 It's been fun
 having Physiology
 with you this
 year. Success &
 happiness always,
 Billie Lu Doane

ADMINISTRATION



DEDICATION

TO OUR PARENTS:—

To you who have sacrificed so much for us, who have given the best years of your lives that we may be enriched by them, who have given us guidance and support in our many trials—to you we owe a great deal. You have enriched our lives by your daily living; we profit by your mistakes. It is you as taxpayers and government leaders who enable us to attend a place of learning such as North Cache. All this, and much more we owe you. As a token of appreciation, we dedicate this year's "Polaris" to you—it is our way of saying thanks.



SCHOOL



LLOYD M. THEURER
Superintendent



GLEN R. WINN
Assistant Superintendent

BOARD

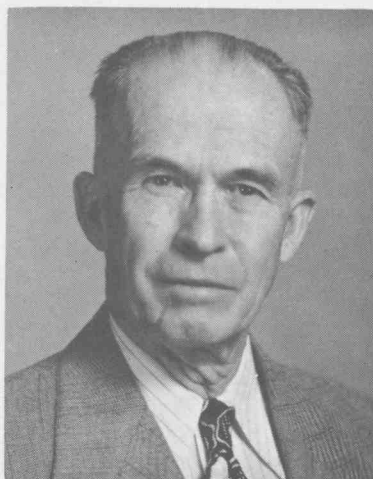
Through the medium of these capable executives, our desires and needs are carried out. They represent the local districts and control the educational policy in the county.

BOARD OF EDUCATION



Left to right:—RICHARD TOOLSON, E. M. BICKMORE, ELLIOTT THORNLEY, GLEN WINN, LLOYD THEURER, LEVI ALLEN, STANLEY GRIFFIN. Absent:—C. B. LEATHAM.

Our faculty has given unselfishly and liberally of their time, knowledge, and ability to make our lives richer, to teach us useful and essential things, and to prepare us for life in this atomic age. We owe them our sincere thanks for the effort and time they have given us.



C. I. STODDARD
Principal

To our Principal, C. I. Stoddard, who is retiring this year, we say, "Well done." Since he was appointed to this position in 1921 he has labored ceaselessly and untiringly to make North Cache the fine school it is. "We will miss you, Mr. Stoddard."

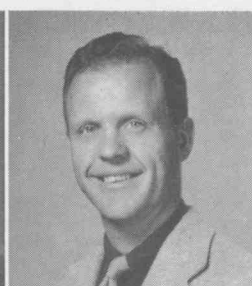
Introducing Our

FACULTY

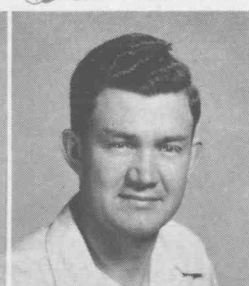
Theron Andher



JENNA LOU THOMPSONSecretary
N. C. H. S. Grad.; attended U. S. A. C.



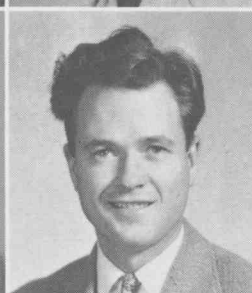
GRANT ANDERSONBand
U. S. A. C. Grad.; Band Club Advisor; Former Army Captain.



THERON ANDHERFarm Mechanics
South Cache, U. S. A. C. Grad.; Advisor F. F. A.



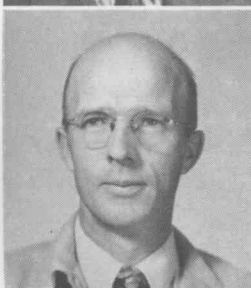
AMOS W. BAIRAgriculture
U. S. A. C. Grad.; F. F. A. Advisor.



ORAL L. BALLAMEnglish, Type
U. S. A. C. Grad.; Norcachian and Dramatic Club Advisor;



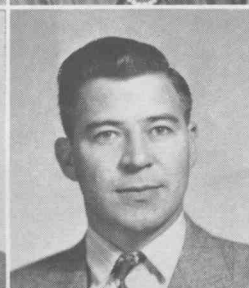
TACY BALLAMStenography, Type
U. S. A. C. Grad.; Cosma Nu Advisor; Secretary C. C. T. A.



ROBERT BRADSHAWPhysiology
M.S., U. S. A. C.; Counselor.



LEWIS BROWNDrivers Training
N. C. H. S. Graduate; Bus Driver.



WILLIAM DARLEYEnglish
U. S. A. C. Graduate; Booster Club Advisor.

EMMA FISHERLibrary, English
U. S. A. C. Grad.; Soph Pep Club Advisor.

C. A. HURRENMathematics
B. Y. U. and U. S. A. C. Grad.; Advisor, Student
Body Officers.

GLADYS HYERHome Economics
U. S. A. C. Graduate; Girls' League Advisor.

C. B. JOHNSONHistory
U. S. A. C. Graduate; Chairman Grad. Com.

STRATFORD LOOSLEChorus
U. S. A. C. Graduate; Opera Director.

DALE MADSENPsychology
M.S., U. S. A. C.; Counselor.

E. B. OLESENHistory
U. S. A. C. Graduate; Member Grad. Com.

W. W. PERKINSEnglish, Art
U. S. A. C. Graduate; Polaris Advisor.

GRACE POSTMAHome Economics
U. S. A. C. Graduate; F. H. A. Club and Stu-
dent Body Advisor.

ILA MAE SCHWABPhysical Education
U. S. A. C. Grad.; Alpha Theta Club Advisor.

L. C. SMITHBiology, Geography
U. S. A. C. Grad.; entered North Cache 1923.

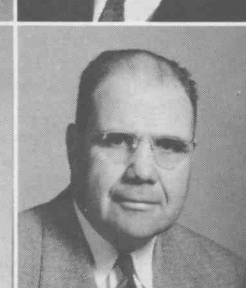
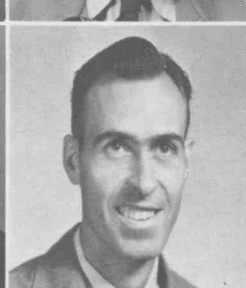
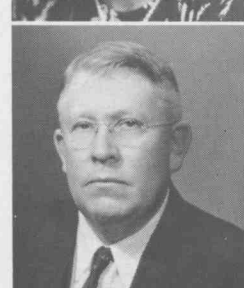
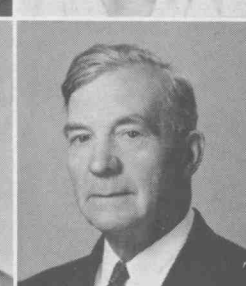
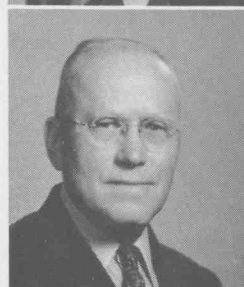
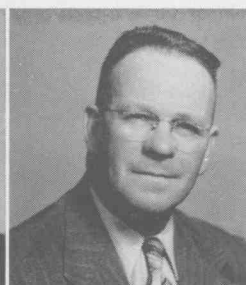
C. B. STODDARDEnglish
U. S. A. C. Graduate; Advisor, Student Court.

E. M. VAN ORDENMathematics
U. of U. Graduate; Soph Advisor; Grad. Com.

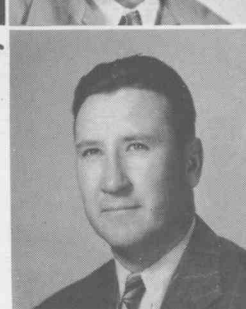
FLOYD WHITEIndustrial Arts
U. S. A. C. Graduate; Lehi High School, taught
at Tooele High.

HEBER WHITINGChemistry, Physiology
U. of U. Grad.; Direct. of Clubs; Football Coach

JAY WHITMANPhysical Education
B. Y. U. Graduate; Advisor to Boys' League;
Basketball Coach.



E. M. Van Orden



Dear worth
success and
happiness for a
small guy.
all the luck in
the world.

STUDENT BODY



President - - - FRANK LARSON

Capable and efficient, with a helping hand for everyone, describes Frank Larson, the student body president for 1949-'50. Under his leadership and guidance we have had a very success year.

Hats off to you, Frank!

Dear "twerp"
we really enjoyed
knowing you and I
want you to know
what a fine fellow I
think you are. I
wish you the best
of luck and hope
you get many good
breaks at of life.
Thank D. Larson
"50"



Vice-President - - PEGGY DAINES

A sense of humor, hundreds of friends, and an ability to lead, are some of the virtues possessed by Peggy Daines. In her office as vice-president she has done much to make this school year better.

Dear worth,
I guess the class I remember best
your being in is Physiology. Frank and
I had fun in the haven't we. I wish
to wish you loads of success and
happiness. Be good kid and be sure
to talk to me whenever you see me want
you. I have enjoyed
knowing
you. I
hope you
will not
work too
hard. Lots
of luck.
Micky.



Secretary - - - - MICKY SMITH

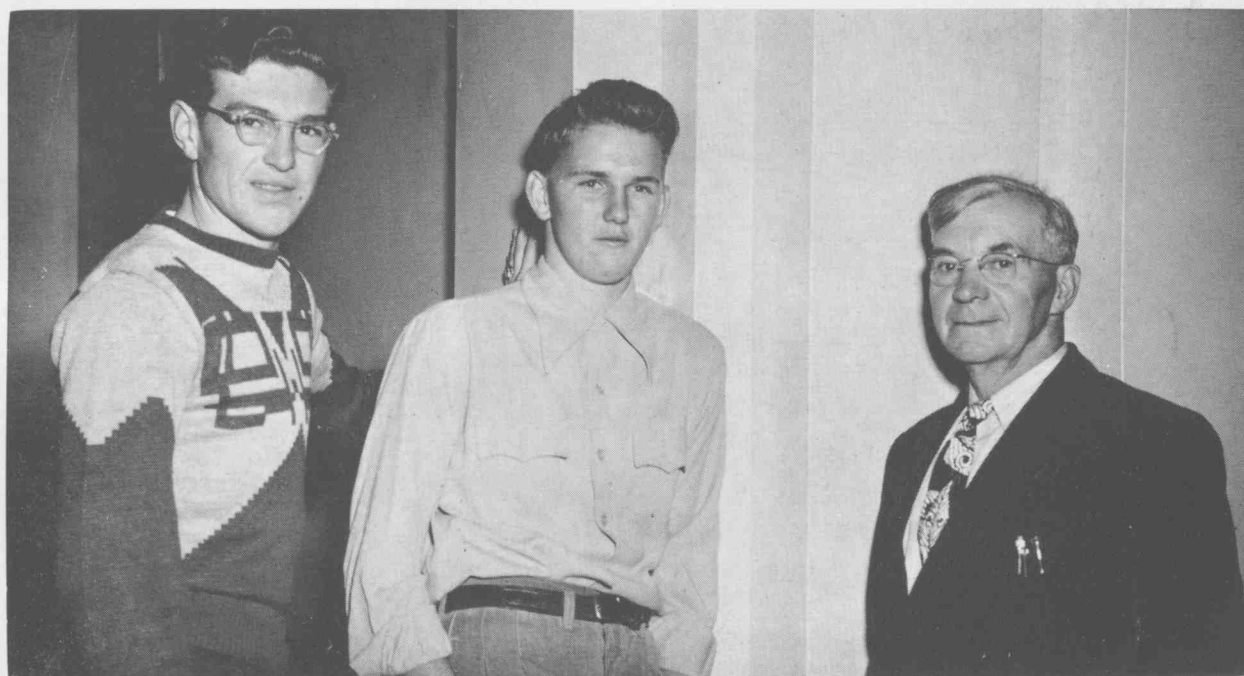
A pleasing personality and the ability to accomplish anything make up Micky Smith, this year's choice for secretary. Credit is due her for a completed record of activities.

EXECUTIVE COUNCIL



Seated, left to right:—MICKY SMITH, C. A. HURREN, GRACE POSTMA, PEGGY DAINES.
 Standing, left to right:—BOB CHAMBERS, FRANK LARSON, MAX COOLEY.

STUDENT COURT



Left to right:—
 DELL ALLEN, Judge; LeGRANDE REEDER, Prosecuting Attorney; C. B. STODDARD, Advisor.



STUDENT COUNCIL

First Row, left to right:—Max Cooley, Frank Larson, Bob Chambers, Junior Sanders, Rosel Hyde, Dayna Stocks.

Second Row:—Louise Erickson, Ruel Hyer, Kenneth Godfrey, Gus Lambrose, Grace Postma, advisor; Donna Williams, Darlene Hansen, Janice Heaten.

Third Row:—C. A. Hurren, advisor; Eleanor Clow, David Gittens, Micky Smith, Peggy Daines, RaNae Hansen, Janet Abel.

STUDENT GOVERNMENT

"Of the Students, by the Students, and for the Students."

STUDENT COURT—As a replica of the supreme court, our student court, with its enforcing executives, helps keep our school a lawabiding institution. Their efforts and accomplishments have added much in improving the student body's orderliness and co-operation.

EXECUTIVE COUNCIL—Composed of the student body officers and a representative from the senior, junior, and sophomore classes, this body cooperates with the faculty in deciding what changes should be made in the school constitution. When conditions arise requiring such, they meet to discuss the problems and make any recommendations.

STUDENT COUNCIL—Our miniature Congress, comprised of student representatives from each homeroom, meet to discuss current activities and problems. A democratic group, they voice the students' opinions toward the different phases of school life and its functions, and transfer their suggestions back to the students.

GIRLS' LEAGUE

First Row:

ELAINE SPACKMAN
Senior Representative

CAMILLE THURSTON
President

LU R. McCARREY
Reporter

Second Row:

MOLLY ANN LAST
Junior Representative

VaLOYE BALLS
Vice-President

ANNA JEAN BAIR
Soph. Representative

Absent:

MRS. HYER
Advisor

RA NAE ALLEN
Secretary



GIRLS' AND BOYS' LEAGUE

The Leagues of the school are established for the purpose of bringing friendship and fellowship to each and every student. They have sponsored monthly entertainment programs, which included a girls'-choice dance held each spring. They are to be commended for the fine job they have done.



BOYS' LEAGUE

First Row:

KEITH HANSEN
Senior Representative

MR. WHITMAN
Advisor

WILLARD JESSOP
Secretary

Second Row:

TAD BINGHAM
Soph. Representative

LaVAR THOMPSON
President

VERNON BRIGHT
Junior Representative

Absent:

DALE WEEKS
Vice-President

SENIORS . . .

SUPERIORS...

Graduation near at hand . . . Regret at leaving school . . . Going on to new worlds.

JUNIORS . . .

Middle Classmen...

Successful prom and assembly . . .
Love-life begins . . . Oh, to be a Senior!

SOPHOMORES . . .

PUPS...

Days of short skirts, pin curls and rolled-up trousers . . . Confusion of classes . . .
Class party.

Hi Worth

I'm wishing a swell guy a lot
of success and happiness in
all of your undertakings.

Lots of Luck
Beverly Kirby



Dear Worth

I have enjoyed your friendship.
I'm wishing you all the luck
and happiness in the world
a pal from Nick Carter

CLASSES

Thelma Crossley
"Circles"



SENIORS

THAD CARLSON

President

Leading the Seniors through a very successful year, Thad Carlson, with his cheerful grin and a joke for everyone, has done a job that is to be commended.

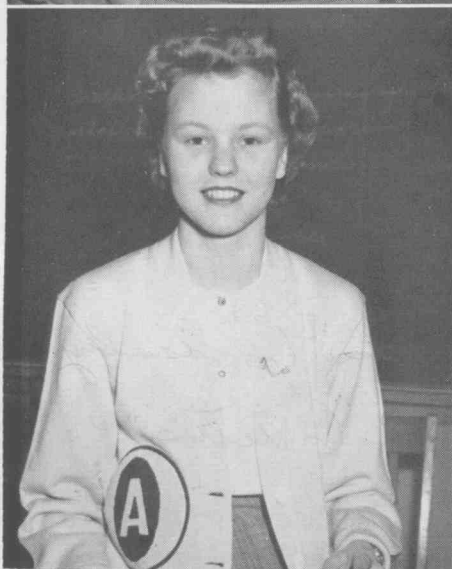


*Dear Thad
Success and happiness
throughout your life.
A friend
Joyce Peterson*

JEANEEN THAIN

Vice-President

A bundle of breathing ambition and eagerness to do more than her share describes Jeaneen Thain, the upper-classmen's choice for vice-president.



ELAINE SPACKMAN

Secretary

Holding up the booking end of the job for the Seniors is Elaine Spackman, who has done her job as secretary efficiently and well.



Dear Worth
I have enjoyed
your friendship
very much this past
year in Seminary -
lots of luck -
Sally

Dear Worth.
I want to wish
you success in
every thing to
do. Please
remember
me as
a good
friend.
as Cove
friend
Lael

JANET
ABEL
Cornish



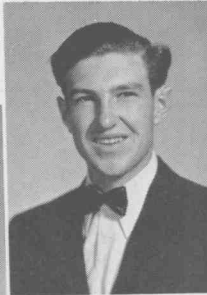
AR DEAN
ALBISTON
Richmond



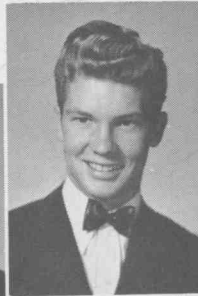
ARDIS
ALLEN
Cove



DELL
ALLEN
Cove



DENNIS K.
ALLEN
Lewiston



LAEL
ALLEN
Cove



LaVOYE
BALLS
Hyde Park

JACQUELINE
BALLS
Hyde Park



RUTH
BAIR
Richmond



GWENEVERE
ARCHIBALD
Clarkston



CLIFFORD
ANDREASON
Smithfield

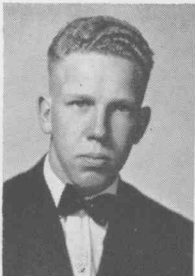


HOWARD
ANDERSON
Richmond

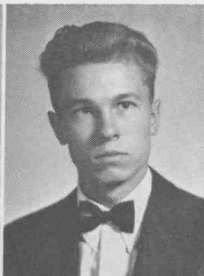


Dear Worth
I want to wish you
Success & happiness in
your life to come
Joan

DEE VERL
BATEMAN
Richmond



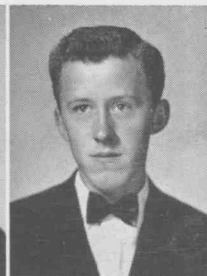
GARTH
BENSON
Newton



MARK
BENSON
Newton



JAY M.
BERNHISEL
Lewiston

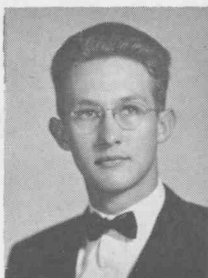


VADIS
BINGHAM
Cornish



GAYLE DEAN
BLAIR
Lewiston





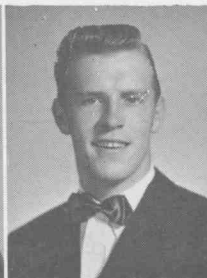
THOMAS
BLANCHARD
Smithfield



BEVERLY
BROUGH
Trenton



DIANE
BULLEN
Richmond



DEL
BULLEN
Richmond



BEVERLY
BUTTARS
Clarkston



MARLENE
BUTTARS
Lewiston

MAX
COOLEY
Newton



MARLIN
CHAMBERS
Smithfield



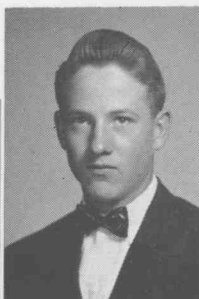
THAD
CARLSON
Richmond



JOYCE
BUXTON
Lewiston



DEE
BUTTERFIELD
Lewiston



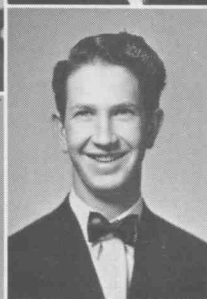
ROSS S.
BUTTARS
Clarkston



MAXINE
CLAYSON
Cornish



JANET
CLAYPOOL
Smithfield



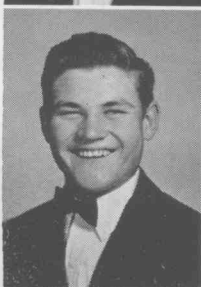
RONALD
CLARK
Benson



JANIS
CHRISTENSEN
Richmond



ELOISE
CHRISTENSEN
Richmond



ROBERT
COOLEY
Newton

BEVERLY
CONDIE
Cache Junction



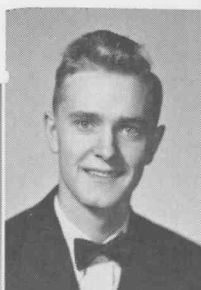
KARMA JEAN
COMISH
Cove



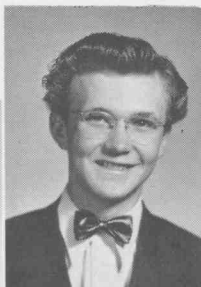
BON ADELL
COMISH
Cove



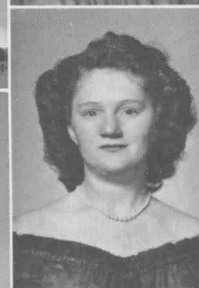
QUINN
COLEMAN
Smithfield



MONTE G.
COLEMAN
Smithfield



ELEANOR
CLOW
Hyde Park



MARIE
ESKELSEN
Cove



LOIS
ERICKSON
Smithfield



SHELDON
EPPICH
Trenton



BETH
DANIELSON
Smithfield

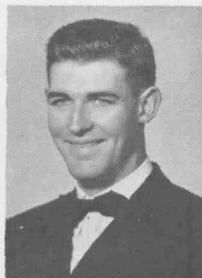


PEGGY
DAINES
Smithfield



MARLENE
CROSSLEY
Smithfield

LEE
DOWNS
Smithfield



CONRAD
FACER
Smithfield



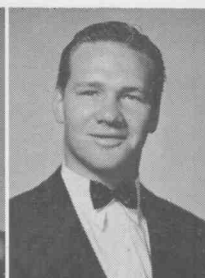
COY
FACER
Smithfield



KARLENE
FACER
Smithfield



KAY
FELTMAN
Lewiston



HAROLD
FALSLEV
Benson





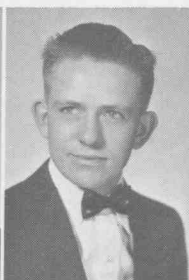
NORMA
FANNESBECK
Smithfield



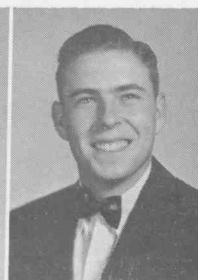
BONNIE
FORD
Smithfield



MARY LOU
FUNK
Richmond



DAVID
GITTINS
Hyde Park



CHARLES
GODDERIDGE
Smithfield



MARVA
GODFREY
Trenton

JOHN
GRIFFIN
Newton

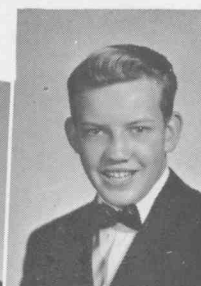
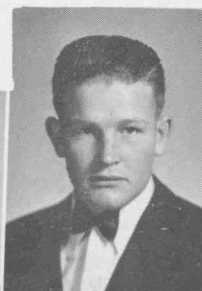
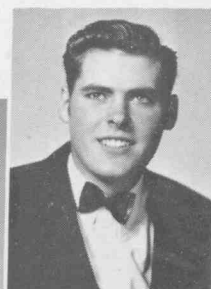
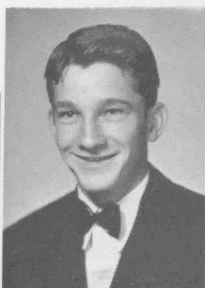
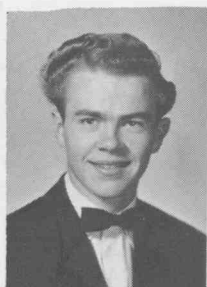
ELLIS
GRIFFIN
Trenton

DOUGLAS
GRIFFIN
Newton

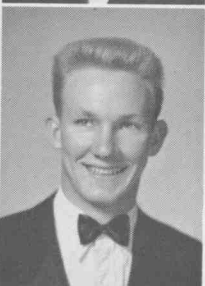
HELEN
GRIFFIN
Newton

DENNIS
GRIFFIN
Clarkston

ROBERT
GODFREY
Richmond



LORNA
GRIFFIN
Clarkston



KEITH
HAMP
Richmond



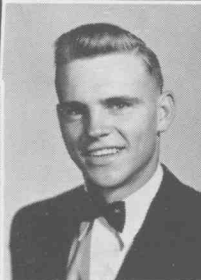
COLLEEN
HANSEN
Smithfield



JAMES
HANSEN
Smithfield



KAREN
HANSEN
Smithfield

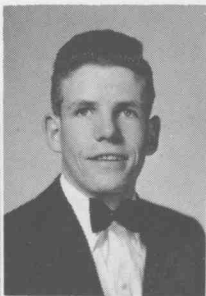


KEITH
HANSEN
Amalga

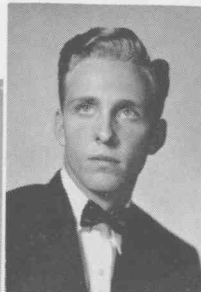
RaNAE
HANSEN
Amalga



JESS
HARRIS
Smithfield



ARLINGTON
HAWS
Newton



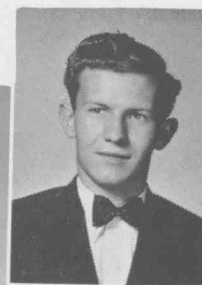
GRACE
HENDRICKS
Richmond



JOAN
HENDRICKS
Cove

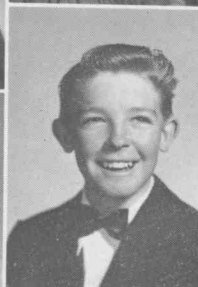


ARCHIE DEE
HILL
Richmond



ILENE
HOUSLEY
Richmond

ALTON
HOFFMAN
Benson



VERNICE
HILLYARD
Amalga



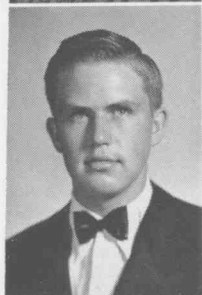
MAX
HILLYARD
Smithfield



LaDENE
HILLYARD
Smithfield



ARLAND
HILLYARD
Richmond



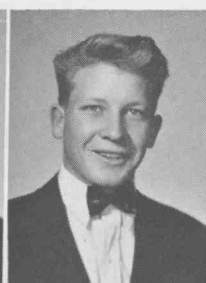
ILEEN
HYDE
Lewiston



ROSEL
HYDE
Hyde Park



ANDREW
HYER
Lewiston



ARLENE
IZATT
Benson



CLARICE
JENKINS
Newton



SHIRLEY
JENSEN
Smithfield

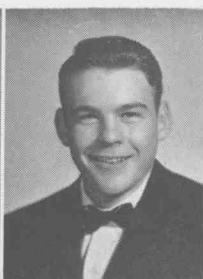




DESSA
JOHNSON
Benson



IRENE
JOHNSON
Lewiston



BOYD
JONES
Newton



MARILYN
JORGENSEN
Lewiston

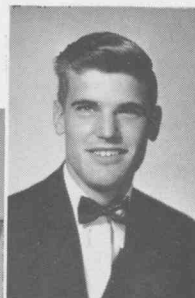


ROSS
JORGENSEN
Benson



FARRELL
KARREN
Lewiston

PHILIP
KRUSI
Smithfield



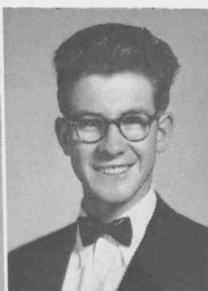
KARLA
KENDELL
Cornish



BEVERLY
KIRBY
Hyde Park



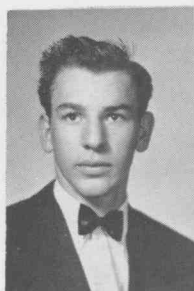
NORMAN
KELSEY
Smithfield



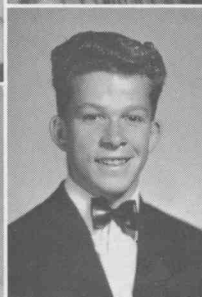
LAURA
KEARL
Smithfield



VES
KARREN
Lewiston



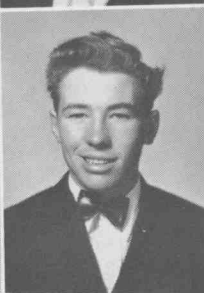
GARY
LEWIS
Richmond



DON
LEWIS
Smithfield



SHIRLEY
LARSEN
Cove



SHERWIN
LARSEN
Cove



DONA
KUNZ
Richmond



FRANK
LARSEN
Richmond

CLEONE
MONSON
Richmond

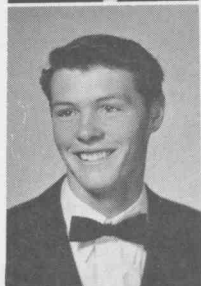
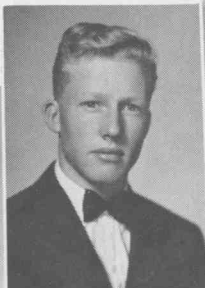
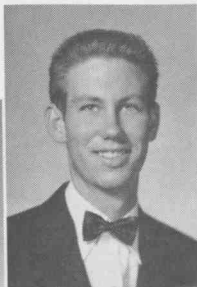
ARLENE
MEYER
Smithfield

LEORA
MERRILL
Trenton

RONALD
MATHER
Smithfield

JENE
MARLER
Lewiston

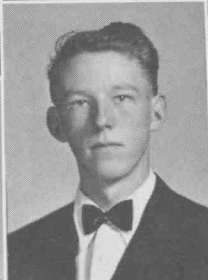
WILLIAM
LITZ
Trenton



DAVID
McARTHUR
Amalga



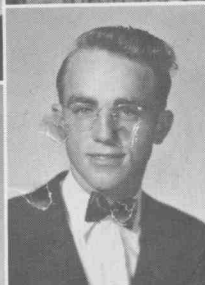
DON
McCARREY
Richmond



WORTH
McCARREY
Richmond



RUTH
McPHERRON
Cache Junction



REED
NEELEY
Cornish



MaLOY
NIELSON
Smithfield

MAVIS
NOBLE
Smithfield



LUDEAN
NUTTALL
Benson



RITA MAE
OLSEN
Richmond



SHIRLEY
PACE
Cache Junction

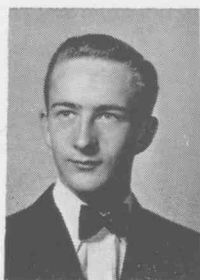


LORENE
PEARSON
Cornish



NORMA
PEARSON
Cornish





DORAL
PERKES
Hyde Park



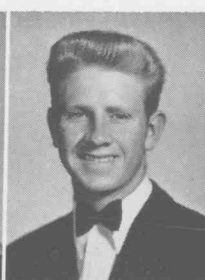
LaMON
PERKES
Hyde Park



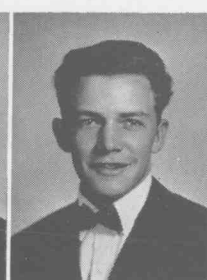
JOYCE
PETERSON
Hyde Park



MARILYN
PICKETT
Lewiston



BRUCE
PITCHER
Cornish



BOYCE
PITCHER
Lewiston

*Dear World.
Here's wishing a Chemistry
pal all the Luck in
the World.
A friend
Janet*

JANET
POND
Richmond

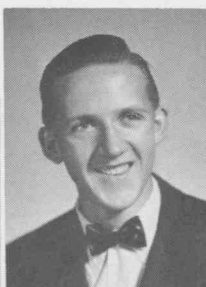
JAMES
POND
Lewiston



MONA GENE
REESE
Benson



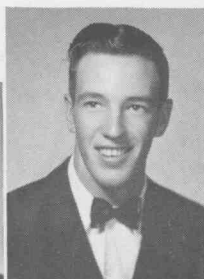
FARRELL
RICKS
Benson



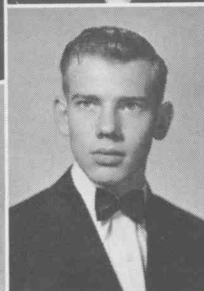
CLARK
PUFFER
Smithfield



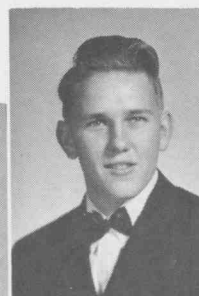
LuANNE
RIGBY
Newton



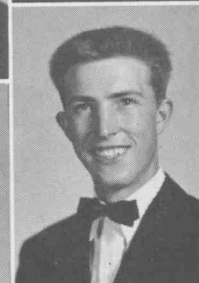
LaVAR
RASMUSSEN
Smithfield



VAUGHAN
RIGBY
Newton



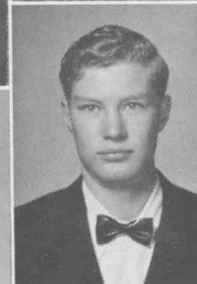
LeGRANDE
REEDER
Smithfield



GERALD T.
RIGGS
Benson



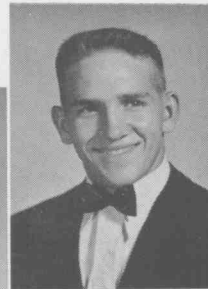
SHERRILL
REESE
Benson



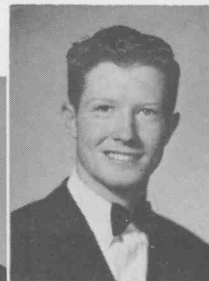
ANDY
ROBINSON
Lewiston

Dear North
I have enjoyed your
friendship throughout
years may it continue.
Best Wishes
Junior

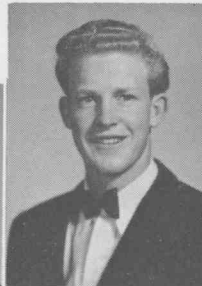
JUNIOR
SANDERS
Richmond



GRANT
SALISBURY
Newton



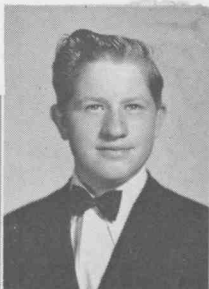
WAYNE
ROSCELLEY
Lewiston



MARLIN
ROGERS
Lewiston



JOE
ROGERS
Lewiston



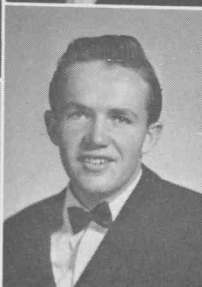
JOANN
ROGERS
Lewiston



LOIS
SLEIGHT
Smithfield



DORALENE
SKINNER
Smithfield



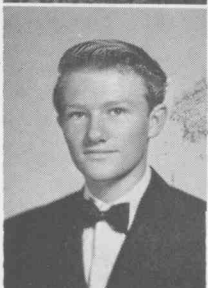
ROBERT
SIMPSON
Smithfield



THELMA JOY
SEAMONS
Hyde Park

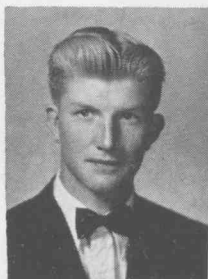


CARROLL
SAUNDERS
Benson



ROY
SANDERS
Newton

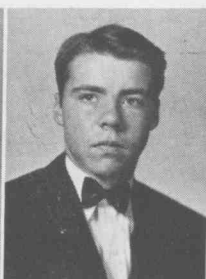
CLYDE
SMITH
Smithfield



MICKY
SMITH
Benson



GARY
SMITH
Lewiston



MARVA DAWN
SPACKMAN
Richmond

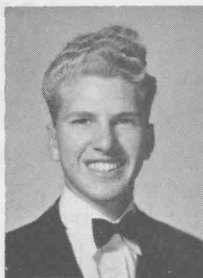


DAYNA
STOCKS
Lewiston

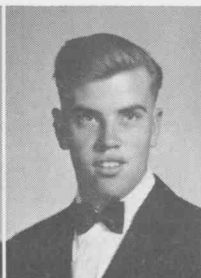


PEGGY
TAGGART
Smithfield

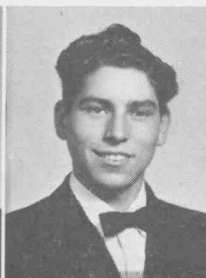




LYNN
TALBOT
Richmond



RICHARD
TALBOT
Lewiston



RON
TALBOT
Lewiston



MARLENE
TELFORD
Lewiston



JEANEEN
THAIN
Benson



EVA DEAN
THOMAS
Lewiston

DALE
VALENTINE
Brigham City

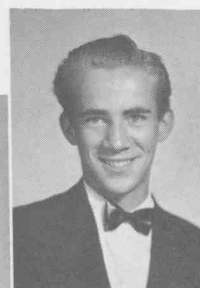
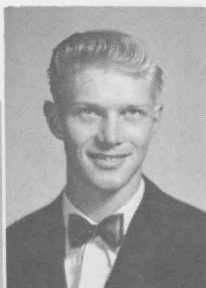
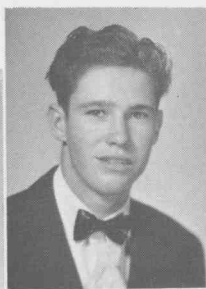
CAMILLE
THURSTON
Hyde Park

LaVAR
THOMPSON
Richmond

NORVELL
THOMPSON
Clarkston

JOAN
THOMAS
Lewiston

JEAN
THOMAS
Lewiston



FLOYD
VEIBELL
Cornish



CLAIR
WEEKS
Smithfield



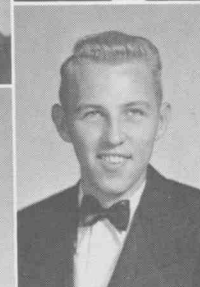
LaNIEVE
WADDOUPS
Lewiston



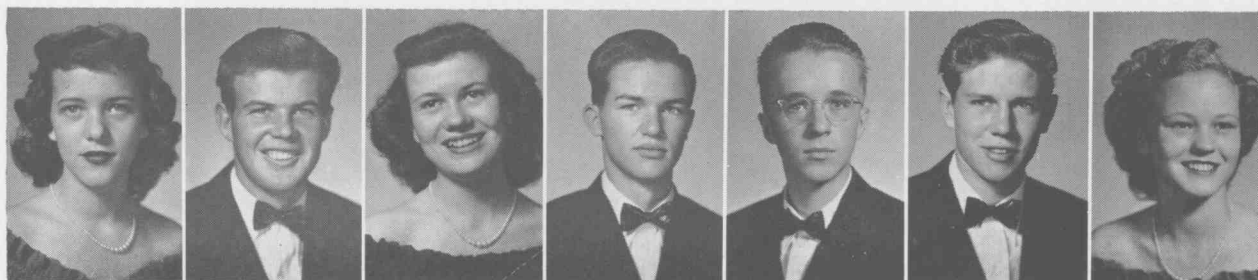
GLEN
WAITE
Hyde Park



MARY
WAITE
Hyde Park



RICHARD
WAITE
Hyde Park



GENIEL
WEBB
Richmond

DALE
WEEKS
Smithfield

CAROL
WEEKS
Smithfield

WENDELL
WEEKS
Smithfield

DOYLE
WEST
Smithfield

ROBERT
WOOD
Lewiston

ELAINE
SPACKMAN
Smithfield

SENIORS' LAST WILL AND TESTAMENT

With the due authority vested in us, we, the Graduating Class of '49-'50, leave you, who follow in our footsteps, our Last Will and Testament:

TO NEXT YEAR'S SENIOR BOYS we leave the privilege of fighting for a place to sit in front of the gym.

TO THE SOPHOMORES OF THIS YEAR, we leave our seats in the balcony. Take good care of them for us.

TO NEXT YEAR'S "GUYS AND GALS" we leave those secluded corners on the top floor.

TO THE TEACHERS we leave our undying gratitude for the patience they have shown us and the help they have given us.

TO MR. STODDARD we leave our best wishes and hope we have not caused him too much trouble.

TO NEXT YEAR'S GRADUATING CLASS, and each class after that, we leave the lump in our throats and the tears in our eyes as we see the "N. C." in the gymnasium lighted for the last time.

TO THE SCHOOL ITSELF we leave our high standards to be handed down year after year to each succeeding class. May they use them to advantage.

THE SENIORS OF '49-'50.



JUNIORS

LARRY HASLAM

President

A bundle of brains poured into an A-number-one frame make up the middle-classmen leader. His eagerness to work and ability to accomplish what he sets out to do has made a year that will long be remembered by his classmates.



RA NAE ALLEN

Vice-President

A talent for making friends and influencing people has made her an efficient vice-prexy. She hails from Cove which, of course, adds to her success.

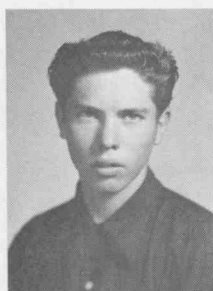


MARY LOU HANSEN

Secretary

A dark-haired beauty from Smithfield with a gift of gab and efficiency, she helped make the Junior Prom and assembly the best in years.

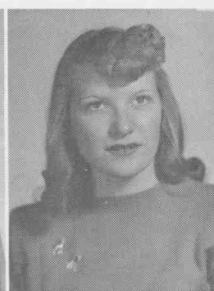




RICHARD
ADDAMSON



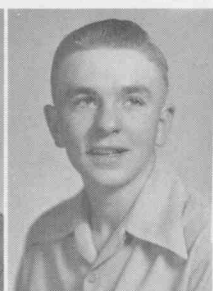
RaNAE
ALLEN



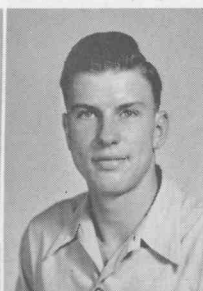
JUNE
ALVEY



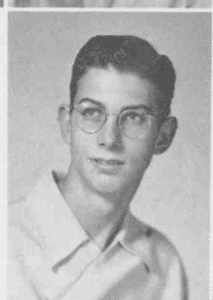
GAYE
ANDERSON



MARRINER
ASHCROFT



MARVIN
BAIR



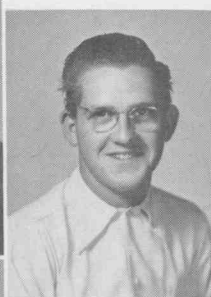
LAMAR
BAIRD



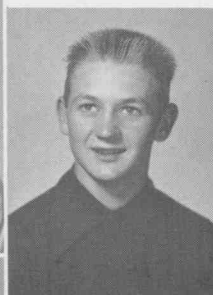
ARLENE
BALLARD

HELEN
BALLS

KENNETH
BALLS



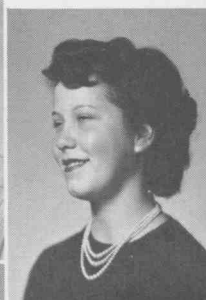
LEW DELL
BALLS



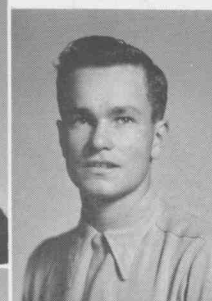
DOUGLAS
BELL



LaNAE
BINGHAM



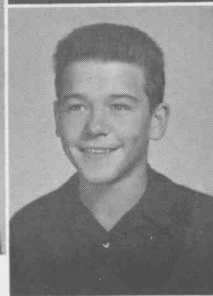
SHARON
BINGHAM



JOY
BODILY



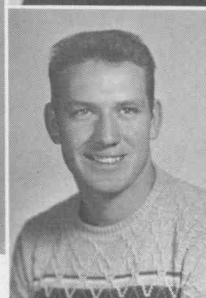
MARY
BOMAN



DONALD
BOWLES



RUTH
BRIGHT

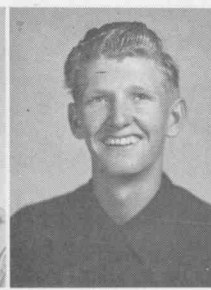
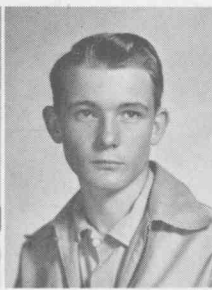
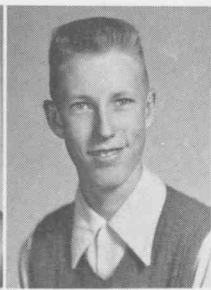
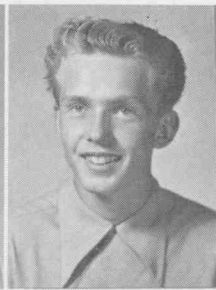
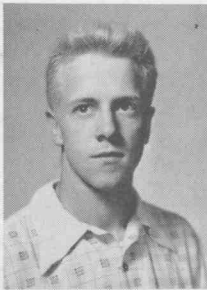


VERNON
BRIGHT



ARDIS
BRONSON

Dear Mr. Smith,

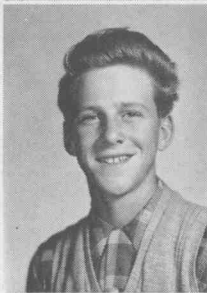


DONALD
BURGESS

GAIL
BUTTARS

JACK
BUTTARS

PAT
BUTTARS



DALE
BROWN

GLADE
BULLEN

LEE
CANTWELL

JOE
CASH

*There's all
the luck
& happiness
always*
Joe Cash
4/9 - '50

RICHARD
CHRISTENSEN

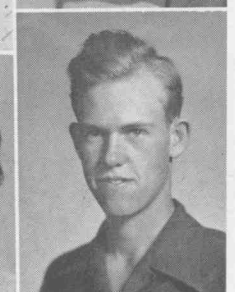
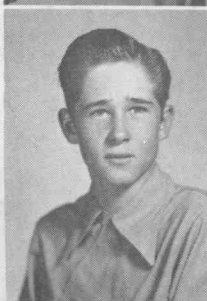
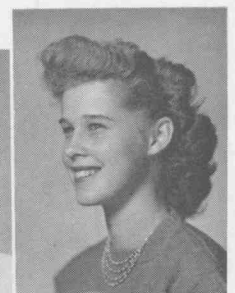
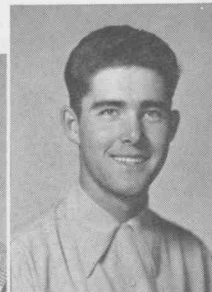
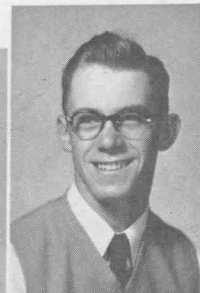
DAVID
CLARK

SARAH ANN
CLARK

DORIS
COOLEY

DONNA FAE
CHAMBERS

ROBERT
CHAMBERS



NORRIS
COOLEY

LEA
COTTLE

BILLIE LU
DONE

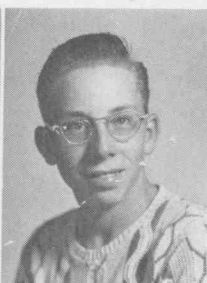
PEGGY
DROLLINGER

EMMA LOU
DRURY

WILLIAM
ELWOOD



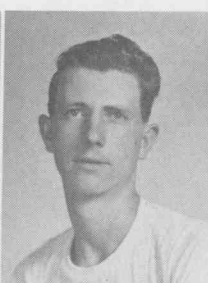
LOUISE
ERICKSON



NOBLE
ERICKSON



HAL
EWING



KENNETH
FELLER



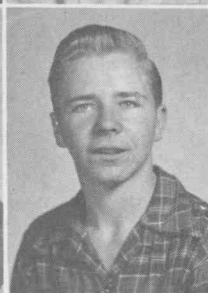
SHARON
FISHER



FLORIN
FULLMER



KARLA
GILBERT

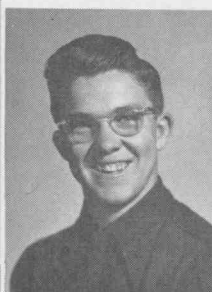


RICHARD
GITTENS

KENNETH
GODFREY



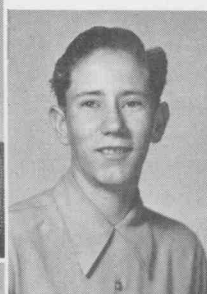
MARVIN
GODFREY



LaDAWN
GOODEY



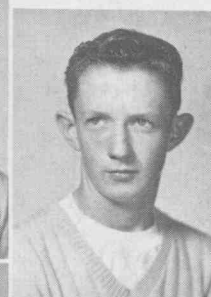
LYNN
HANCEY



OWEN
HANCEY



CLAIR
HANSEN



DARLENE
HANSEN



ELAINE
HANSEN



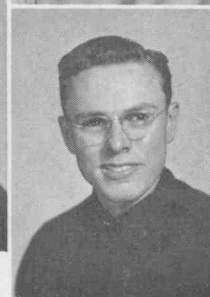
MARY LOU
HANSEN



PAUL
HANSEN



DEAN
HARDMAN



VAL
HARRISON





VAUN
HARRISON



LARRY
HASLAM



MARY LOU
HAWKINS



DORENE
HENDRICKS



ANNA MAE
HILL



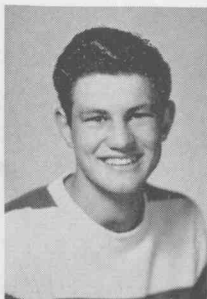
JENIS
HILLYARD



JOYCE
HILLYARD



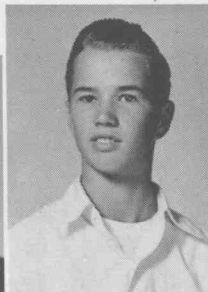
LONA
HODGES



RALPH
HOLT



RUEL
HYER



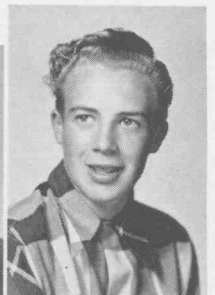
DOUGLAS
IZATT



BARBARA
JENKINS



DARWIN
JENSEN



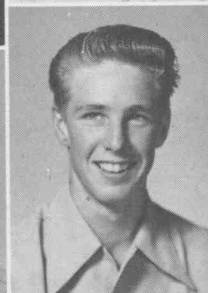
THOMAS
JENSEN



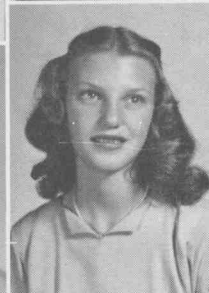
VIRGINIA
JENSEN



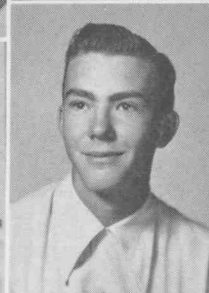
WILLARD
JESSOP



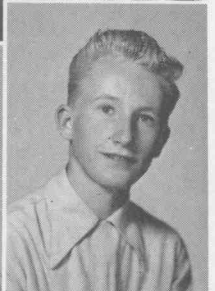
BART
JOHNSON



CAROL
JOHNSON



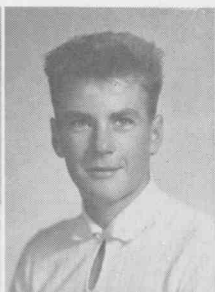
DELL
JOHNSON



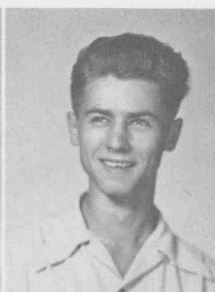
FRANK
JOHNSON



KAY
JOHNSON



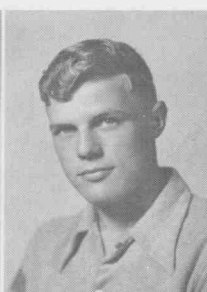
TEX
JOHNSON



WILFORD
JONES



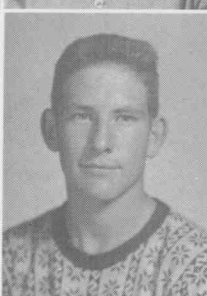
RUTH
KELSEY



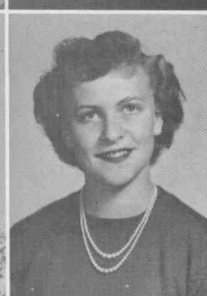
FRED
KRUSI



MOLLY ANN
LAST



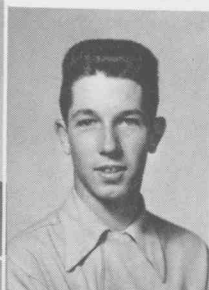
BASIL
LAMB



FAYE
LAMB

REBECCA
LAMB

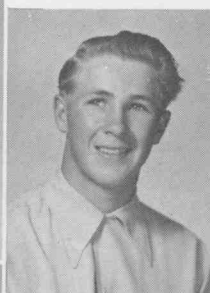
ROBERT
LAMB



EVELYN
LAURSEN



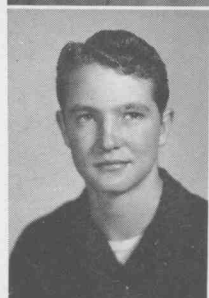
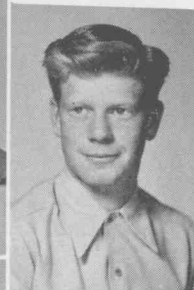
DONALD
LEE



BONNY
LeFEVRE



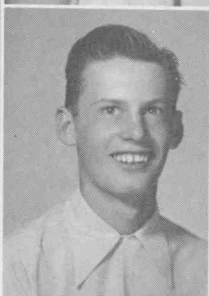
MARLIN
LOOSLE



JESSE
MALMBERG



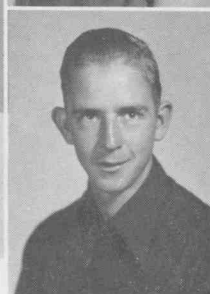
Lu R
McCARRY



RALPH
MEIKLE



ELLEN
MOWLEM

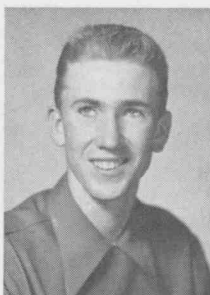


LORIN
MURRY

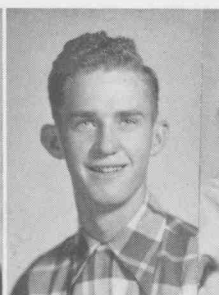


RUTH
NELSEN

Dear Mr. Smith,



REESE
NEAGLE



ROBERT
NIELSEN



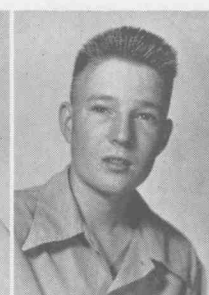
JOANN
NILSEN



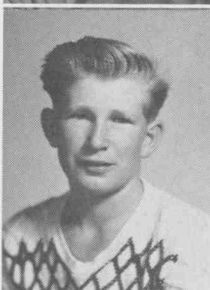
MARGARET
NILSON



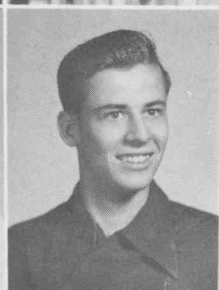
JOAN
NOBLE



MARVIN
OLSEN

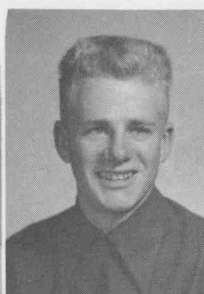


NaVELL
PAYNE



CLAYTON
PARKINSON

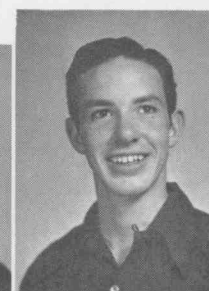
MILTON
PETERSEN



VERLA
PETERSON



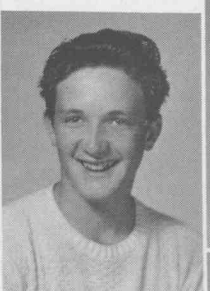
BILL
PIKE



BONNIE
PILKINGTON



REID
PEARCE



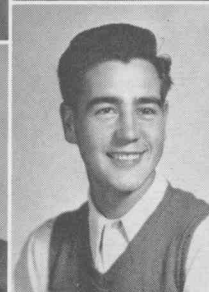
LENORA
PETERSON



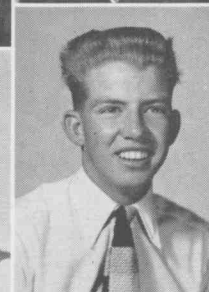
ORVID
PITCHER



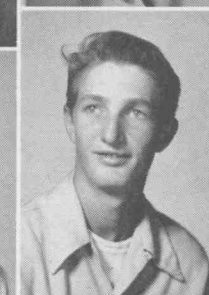
JOHN
PLOWMAN



DELWIN
POND



SCOTT
POULSEN



JANET
PITCHER



JALAINÉ
PITCHER

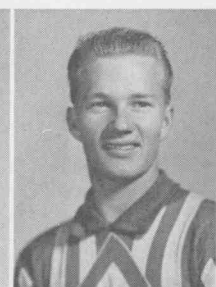




LaCONNA
PURSER



CARLA RAE
RASH



DARWIN
RASMUSSEN



MELVA
RAVSTEN



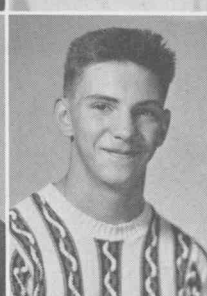
JOYCE
REEDER



KAREN
REEDER



JACK
REESE



GILBERT
RICHARDSON

SANDRA
RICHARDS



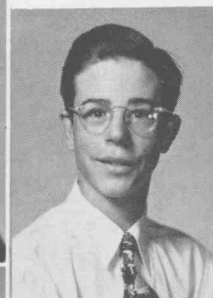
GORDON
RICKS



SHIRLENE
RICKS



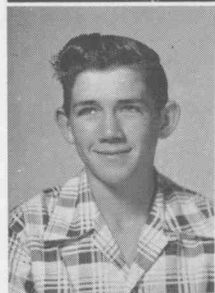
JAY GOLDEN
RIGBY



PERRY
ROBERTS



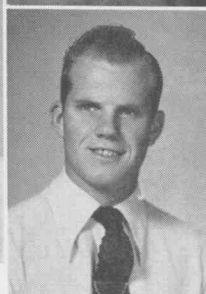
ELMA BAE
ROGERS



MARVIN
SAUNDERS



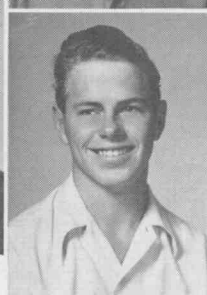
WILLARD
SAUNDERS



BRUCE
SCROWTHER



DOROTHY
SEAMONS

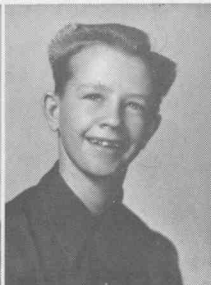
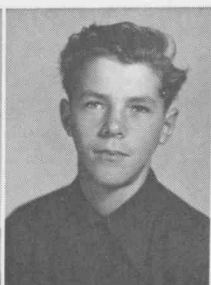
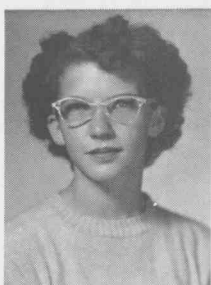


PERRY
SHUMWAY



JEAN
SIMPSON

Dean Id with



TED
SMITH

MARVA
SORENSEN

GEORGANNA
SPENCER

LARRY
STEPHENSON

TESS LaDAWN
STOWELL

ARLENE
SMITH

SUZANN
TALBOT

FLOYD
TARBETT



LaDAWN
THAIN



ELDORA
THOMSON



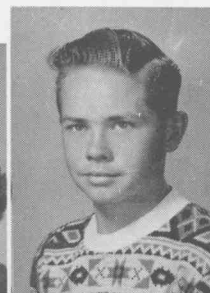
LuDEAN
THORNLEY



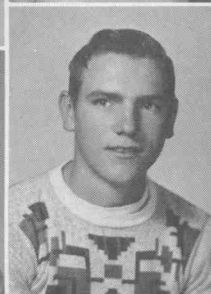
LuANN
TRAVELLER



TAD
TRAVELLER



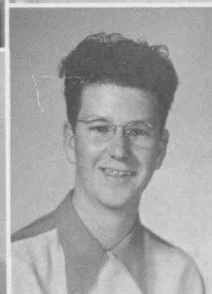
GLORIA
TRIPP



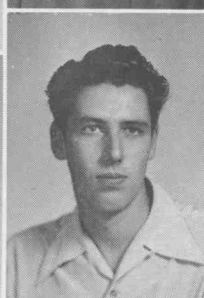
VIRGIL
TUVESON



JOYCELYN
WESTOVER



GLEN
WILDING



GLEN R.
WINN



CARA LOU
WISER



SOPHOMORES

FRED ANDERSEN

President

Just call him bashful. He is a decided asset to the greenlings. His capable leadership has resulted in a successful year for the youngest Bulldogs.



CAROL BINGHAM

Vice-President

A neat-looking chick from Amalga with a remarkable sense of humor, Carol is to be commended for her leadership and help in making this year the best ever.



ELOISE KARREN

Secretary

A regular cowhand from Texas, she is a gal who is destined to go places. Her enthusiastic work as secretary has proved this.

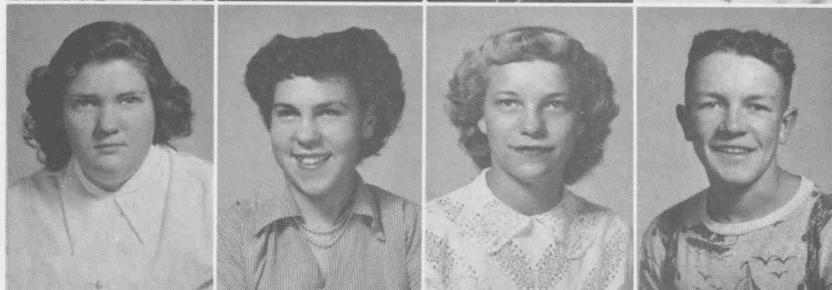


Dear Mr. Smith,

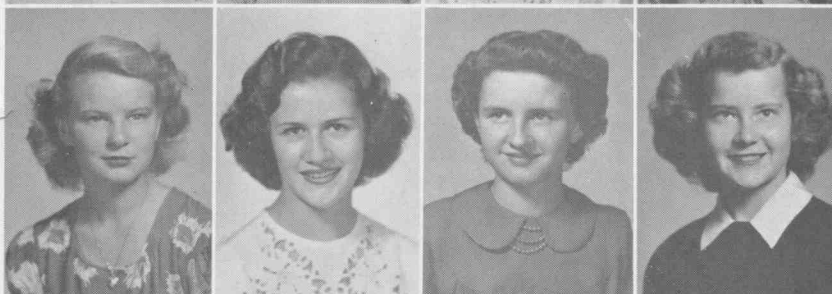
NaDEAN ALLEN
 JEAN ALLSOP
 DON ANDERSON
 FRED ANDERSON



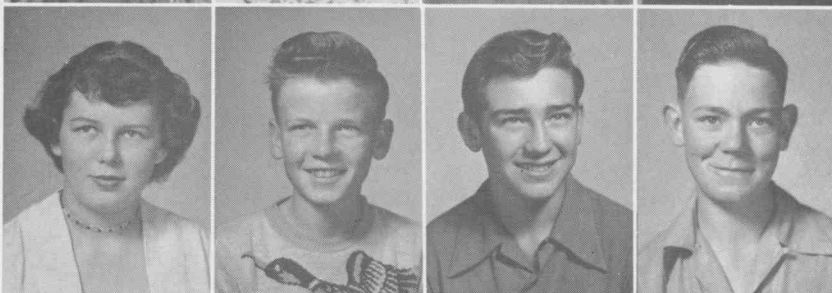
MARIAN ANDERSON
 SUZANNE ANDERSON
 LAREE ANDREW
 DAVID ASHCROFT



PEGGY AVERS
 SANDRA BAER
 ANNA JEAN BAIR
 GLORIA BALLS



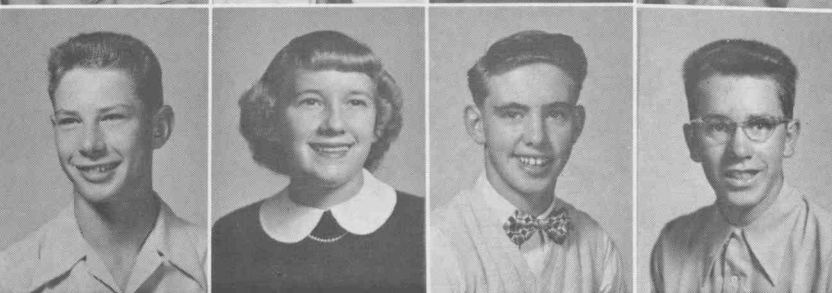
MAU DEE BAIR
 ARLIN BEETON
 GERALD BELL
 CLYDE BENSON



DEE BENSON
 DICK BENSON
 DIXIE BENSON
 MYRON BENSON



ZANE BERGESON
 CAROL BINGHAM
 TAD BINGHAM
 VAUGHN BLAIR





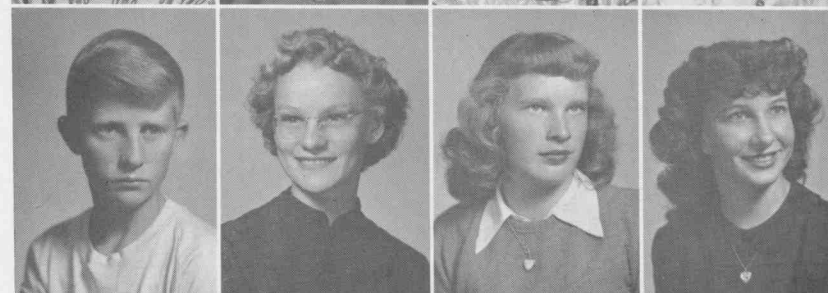
CAROL BLANCHARD
DAVID BODILY
DAVID BOMAN
MARGENE BRONSON



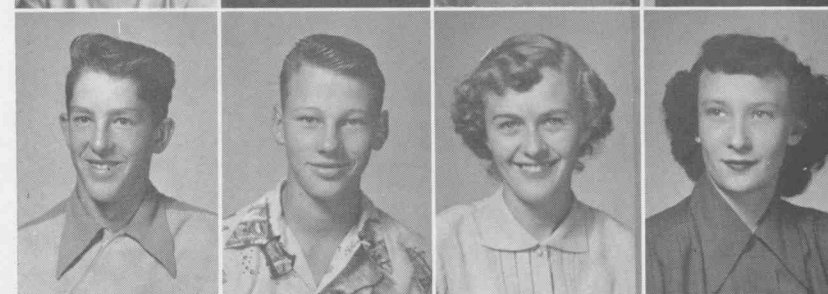
BRUCE BROWN
ESTHER BUTTARS
ORLAND BUTTARS
VAL BUXTON



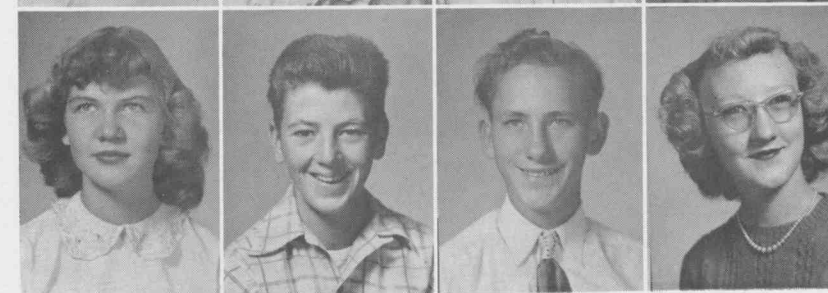
JACK CASH
BEVERLY CHRISTENSEN
ERMA COLEMAN
GENE COLEMAN



TOMMY COLEY
CAROL CORBETT
NINA VEE CORBRIDGE
WILMA CROCKETT



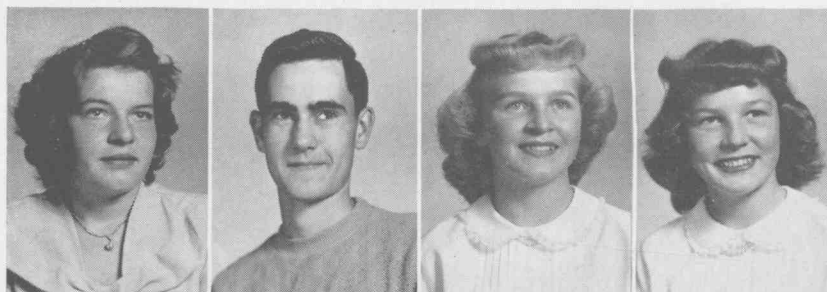
BILL CRONQUIST
PERRY CROSSLEY
CARLA DAINES
MARVA DAINES



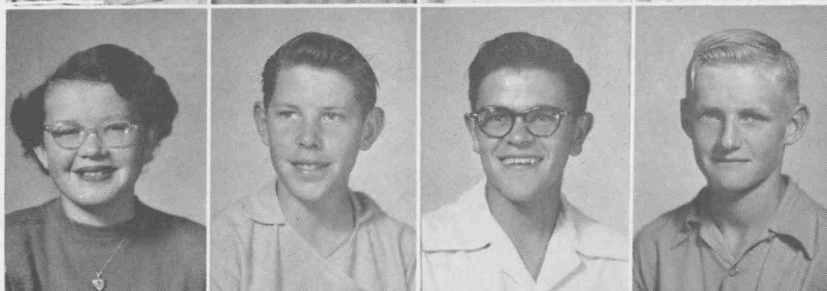
MARY DANIELSON
LARRY DAY
DICK DENSON
VELDA MAE DUCE

Dean Ed Smith

NOREEN EGAN
 NORMAN ELWOOD
 MAE FACER
 RAE FACER



EVELYN FALSLEY
 DALE FELTMAN
 FERRIN FISHER
 HAL FISHER



DeMAR FONNESBECK
 SADIE GRIFFITHS
 DORA GITTINS
 JEANNINE GITTINS



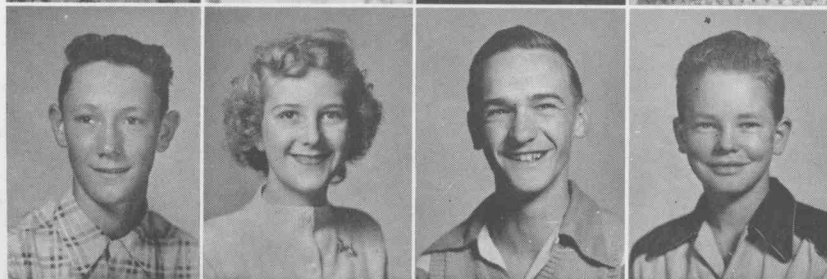
LENNIS GODFREY
 REED GODFREY
 VENICE GOODSSELL
 JANET GORDON



JENELE GRANT
 JERROLYNN GORDON
 JaNAE GREENE
 HAROLD HANCEY

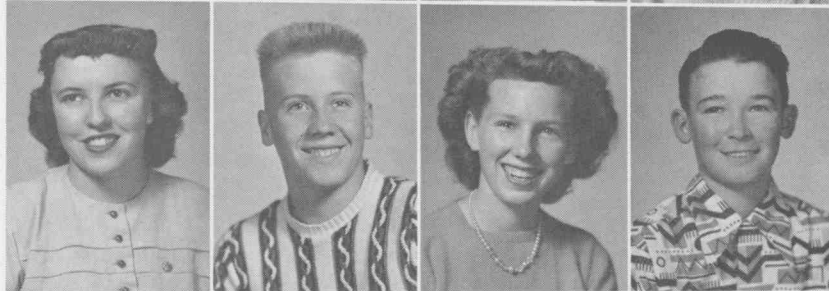


DeMARR HANSEN
 EULALIA HANSEN
 SHERIDAN HANSEN
 CLAIR HASLAM

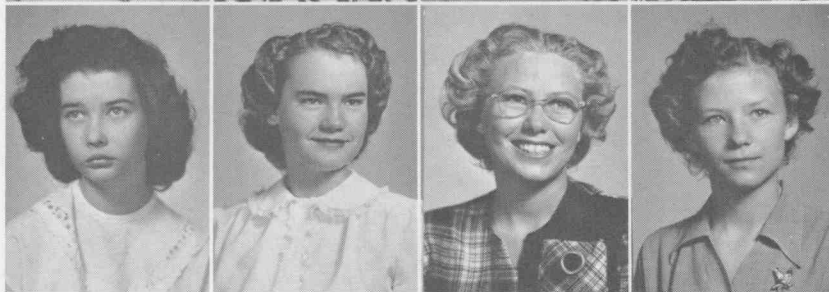




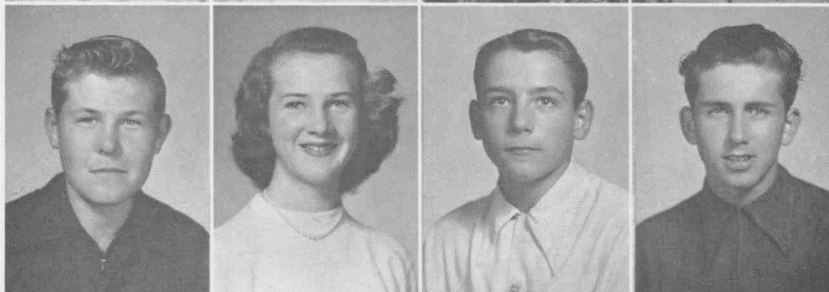
MARVA HAWKINS
JOYCELYN HEAPS
DORISLEE HESS
LEON HICKEN



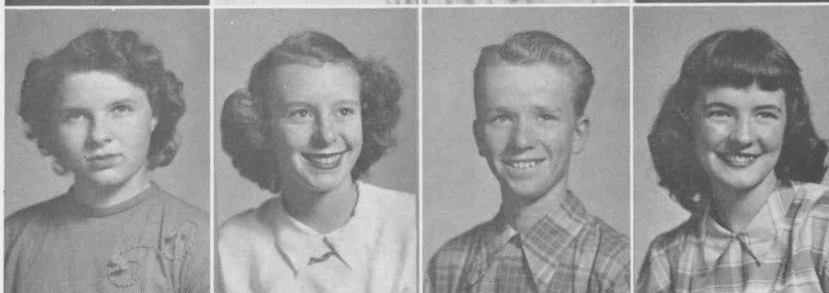
JANICE HEATON
MORRIS HILL
JoANN HODGES
ROBERT HOFFMAN



LaDON HOUSLEY
LUCILE HYER
AUDREY JENKINS
JEAN JENKINS



ROBERT JENKINS
KAREN JENSEN
GEORGE JONES
ORVELL JONES



JANICE JORGENSEN
JOAN JORGENSEN
KEITH JORGENSEN
ELOISE KARREN



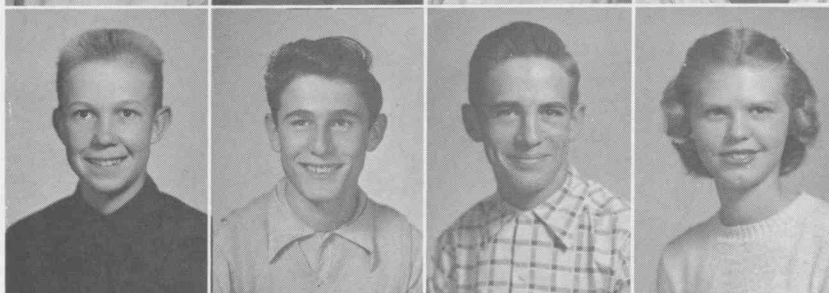
CAROL KARTCHNER
DONNA KEARL
RAMONA KEARL
ROSS KENDELL

Dear Mother,

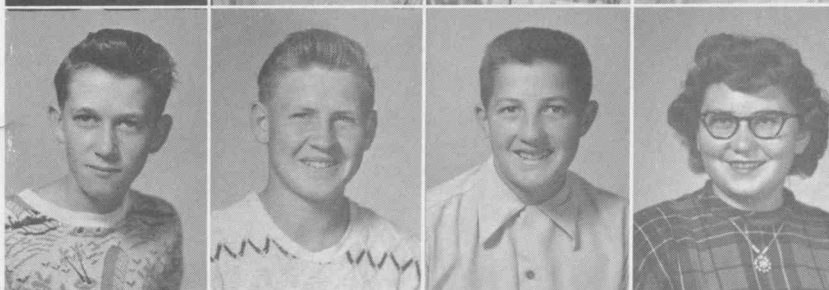
LOIS KENT
VONDA KENT
CAROL KIRBY
EARL LAMB



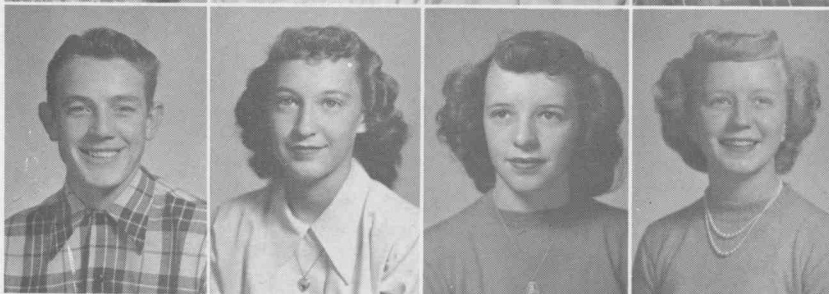
MAX LAMB
GUS LAMBROSE
DON LARSEN
ARLENE LAWRENCE



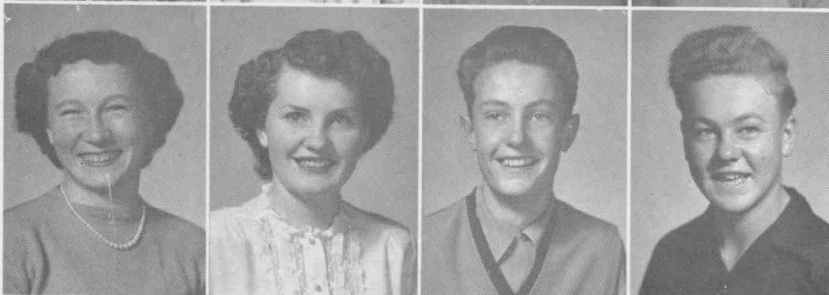
BARTON LAYNE
JERRY LAYNE
GLADE LEAVITT
ZALOMA LEAVITT



MORRIS LEWIS
ANNA BETH LINNARTZ
MARILYN LOW
JANICE MARRIOTT



WILMA MATHER
RUTH McARTHUR
LARRY McKNIGHT
MALDON MILLER



DALE MONSON
MARIE MONSON
MARYLIN MORTINSEN
KENNETH MOOSMAN





CAROLYN MUNK
CAROL NELSON
LOIS NOBLE
TERRY NIVISON

WILLA JOY OLIVERSON
JOAN PEARSON
MARY PERKES
PHILIP PERRY

WENDELL PETERSON
CARROLL PLOWMAN
SPENCER PREECE
FAYE RASH

DIANE RAVSTEN
BONNE READ
JOYCE READ
DARLENE RICHARDSON

LYNN RICHARDSON
PAT RICHMAN
JANICE RIGBY
LOIS RINDLESBACHER

ARVELLA ROMERO
ARLENE ROUNDY
LaPRIEL SEAMONS
LYNN SEAMONS

Dear Mother,

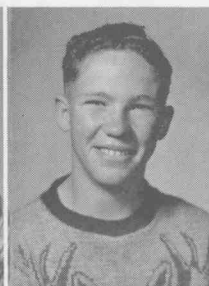
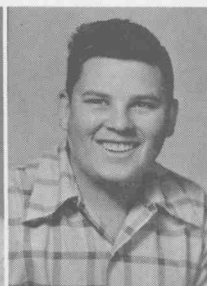
*My class with
the past two*

GALE SKINNER

BILLY SMITH

CLYDE SMITH

PAUL SMITH

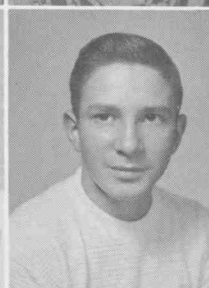
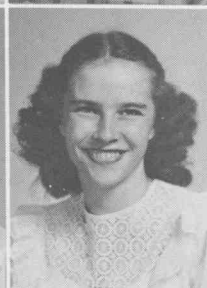


NOLA SPACKMAN

SHIRLEY SPACKMAN

LaVINA SPETH

KENNETH SPRING

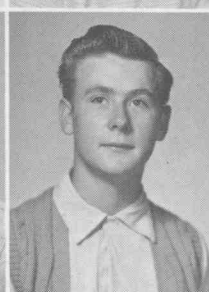


BAR DEE STOWELL

BETH STODDARD

LaFARR STUART

LARRY TAGGART

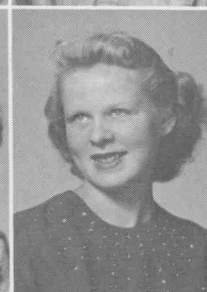


ELAINE THOMPSON

PATSY THOMPSON

FAYE THORNLEY

LEE THOMPSON

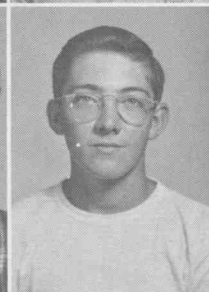


VENNA THOMPSON

BEVELYN TOOMBS

PEGGY TRIPP

SHERRON VAIL

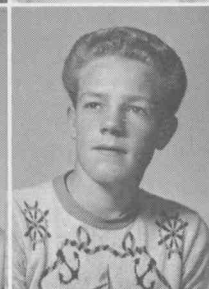
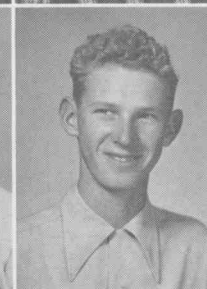
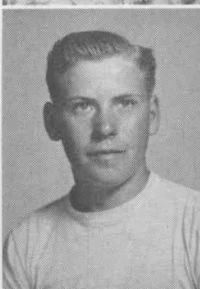


BRUCE VEIBELL

MONA LOY WATTERSON

ALLEN WHEELER

LEWIS WESTOVER





WENDELL
WISER

JANET
WISER

NYMAN
WINN

CARROL
WINN

DONNA
WILLIAMS

HEBER
WHITING

"Hats off" to our Greenling class. With spunk and spirit, this class aroused pep and participated in school activities to the utmost.

One of the memories of this class is the unforgettable Sophomore Day. With their short skirts, pin-curls, and rolled-up trousers, they made it the best ever.

REMEMBER SOPHOMORE DAY



Hi. Worth:
I have enjoyed
having classes with
you these past two
years at N. C.

a Pal,
Robert Lamb

ACTIVITIES

CLUBS ...

Alpha Theta ... Boosters ... Dra-
matic ... Cosma Nu ... FFA ...
FHA ... Sophomore Pep ... Band

SPORTS ...

Football Basketball
Track . . . Baseball

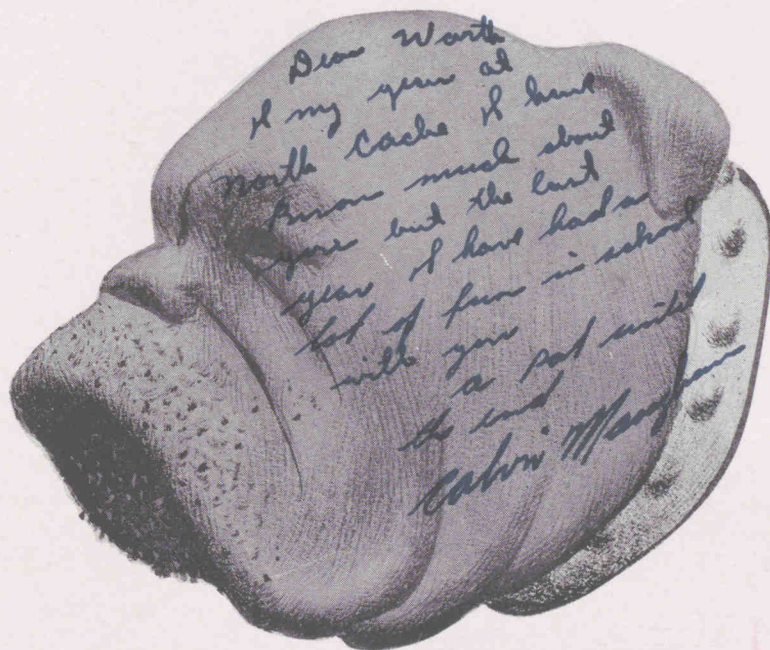
DANCES ...

Get Acquainted ... Homecom-
ing ... Harvest Ball ... Sweet-
heart Ball ... Junior Prom ...
April Fool's ... Spring Hop ...
Jamboree ... Graduation ...

AWARDS ...

Dramatic ... Citizenship ...
Oratorical ... Plant Medal ..
Honor Students

Dear Worth
 Give enjoyed your lines of luck.
 friendship and hope of luck.
 wishing you have Cal Conrad & Zacher



Dear Worth
 I my year at
 North Cache I have
 known much about
 you but the last
 year I have had a
 lot of fun in school
 with you
 a sad until
 the end
 Calvin H. Hargrave

ACTIVITIES

Dear Mr. Worth,

P O L A R I S



ARLENE MEYER
Editor

DEE HILL
Business Manager

STAFF

With but one goal in mind, the "Polaris" staff and executives have worked tirelessly that each of us may have a tool with which to recall those wonderful high school memories. With the able help and advice of Mr. Perkins, the "Polaris" is produced and presented to you, the students. To all these people we extend our thanks for a job well done.



Seated, left to right:—

DEE HILL, Business Manager; W. W. PERKINS, Advisor; ARLENE MEYER, Editor; JOYCE HILLYARD, Assistant Editor.

Standing, left to right:—

DONALD BOWLES, Assistant Business Manager; DAVID GITTINS, Sports; GRACE HENDRICKS, Typist; PEGGY TAGGART, Writesups.



JACKIE BALLS
Editor

DENNIS ALLEN
Business Manager

STAFF

Staying up nights trying to beat the deadline and striving to find news to interest the students—this is the life of the Norcachian staff. The papers we received always lived up to our expectations. Under the able supervision of Mr. Ballam, who, incidentally, has done a "bang-up job" as a new advisor, the staff has brought us a complete coverage of school activities.



Seated, left to right:—
LEE CANTWELL, Assistant Business Manager; DENNIS ALLEN, Business Manager; JACKIE BALLS, Editor; ORAL BALLAM, Advisor; VIRGINIA JENSEN, Assistant Editor; GENIEL WEBB.

Standing, left to right:—
CAROL WEEKS, LAURA KEARL, DARWIN RASMUSSEN, ORVID PITCHER, BOB CHAMBERS, KARLENE FACER, RANAE ALLEN, PEGGY TAGGART.

ALPHA THETA

Composed of junior and senior girls, the Alpha Theta was organized for the betterment of the school. With Ar Dean Albiston, president; Janet Pitcher, Vice-president; Vernice Hillyard, secretary; and Mrs. Schwab as advisor, this club has marched at games, sponsored rallies and assemblies, and, in connection with the Boosters, they have made the annual Sweetheart Ball and assembly very successful.



Left to right:—
 VERNICE HILLYARD Secretary
 JANET PITCHER Vice-President
 ARDEAN ALBISTON President
 MRS. SCHWAB Advisor



"Girl of My Dreams"

First Row, left to right:—
 G. ANDERSON, J. HILLYARD, M. NIELSON, J. REEDER,
 M. G. REESE, MRS. SCHWAB, V. HILLYARD, A. ALBISTON,
 J. PITCHER, L. PURSER, F. LAMB, B. DOANE, D. BULLEN, B. CONDIE, J. PETERSON.

Second Row:—
 J. BALLS, C. THURSTON, R. ALLEN, K. FACER, J. ABEL, V. BINGHAM, D. HANSEN, T. STOWELL, C. WISER, J. NOBLE, K. JOHNSON, D. HENDRICKS, R. HANSEN, J. THAIN, B. KIRBY.

Third Row:—
 A. M. HILL, E. CLOW, V. BALLS, E. SPACKMAN, C. MONSON, H. GRIFFIN, M. TELFORD, C. WEEKS, G. WEBB, C. FACER, I. JOHNSON, G. BLAIR, E. HANSEN, S. REESE, M. HANSEN, L. THAIN, L. McCARRY, P. BUTTARS, M. BOMAN.

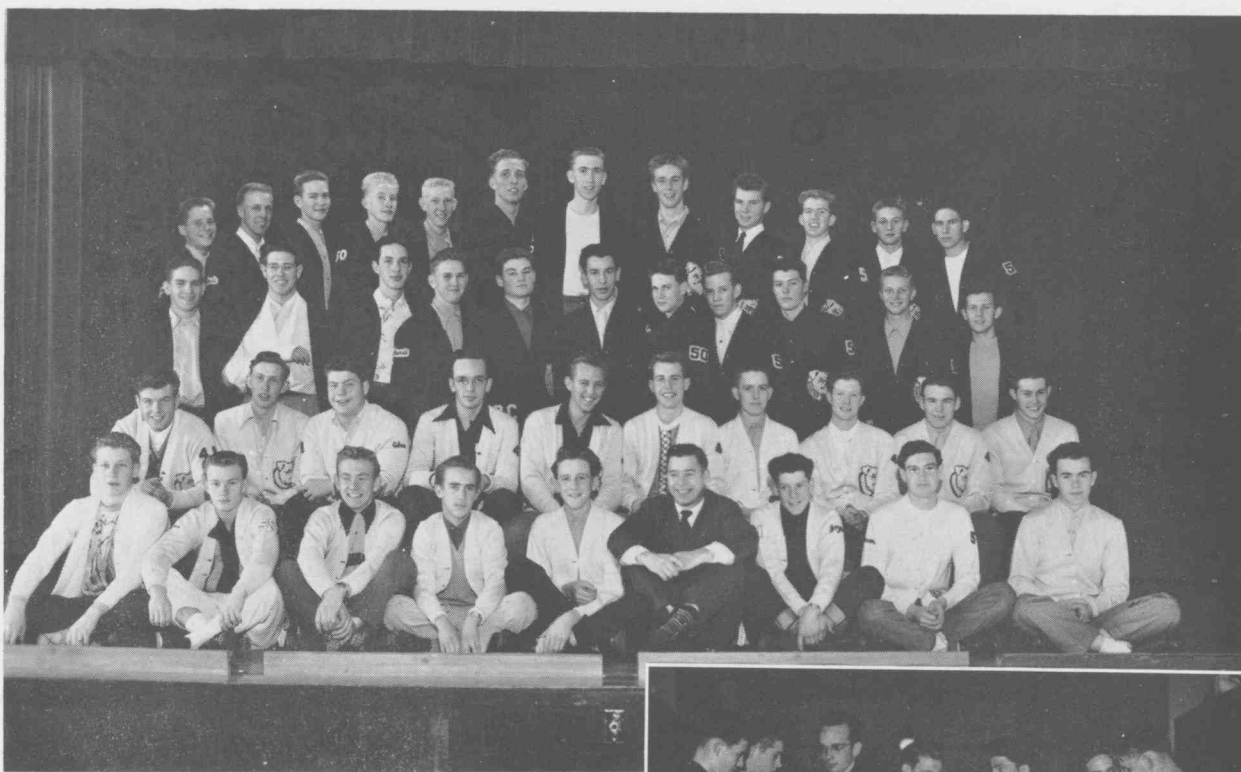
Fourth Row:—
 J. CLAYPOOL, A. MEYER, L. HILLYARD, L. KEARL, M. SMITH, P. TAGGART, P. DAINES, J. HENDRICKS, K. HANSEN, D. F. CHAMBERS, M. LAST, L. ERICKSON, L. TRAVELLER, J. HILLYARD, K. GILBERT, S. TALBOT, J. WESTOVER, M. SPACKMAN, L. COTTLE.



Left to right:—
 ROSEL HYDE Secretary
 DAVID GITTINS Vice-President
 RICHARD WAITE President
 MR. DARLEY Advisor

BOOSTERS

Organized in 1929 for the purpose of boosting school spirit and supporting school activities, this club has sponsored rallies and half-time activities for games, as well as working with the Alpha Theta on the Sweetheart Ball and assembly. Under the leadership of Richard Waite, president; David Gittins, vice-president; Rosel Hyde, secretary; and Mr. Darley, advisor, they have done a great deal for the school.



First Row, left to right:—
 A. HYER, D. RASMUSSEN, T. CARLSON, D. VALENTINE,
 L. CANTWELL, MR. DARLEY, F. KARREN, D. ALLEN,
 R. GODFREY.

Second Row:—
 D. WEEKS, J. POND, C. ANDREASON, C. FACER, R.
 WAITE, R. HYDE, D. GITTINS, G. SALISBURY, B. JONES,
 M. COOLEY.

Third Row:—
 J. SANDERS, D. STOCKS, B. PIKE, L. REEDER, R.
 COOLEY, V. KARREN, R. WOOD, J. GRIFFIN, D. Mc-
 ARTHUR, L. THOMPSON, D. HILL.

Fourth Row:—
 J. REESE, D. BROWN, L. HASLAM, F. JOHNSON, W.
 JESSOP, A. HAWS, R. NAEGLE, B. JOHNSON, D.
 ALLEN, D. POND, D. BALLS, B. LAMB.



"How about a program, Mister?"

DRAMATIC CLUB

These "stage-struck" students, with an eye toward Hollywood, have done much to boost school spirit; they have sponsored rallies, a talent-find assembly, a banquet, and they have helped make our school play and operetta successful. This group is led by Lael Allen, president; Larry Taggart, vice-president; and Clyde Smith, secretary.



Left to right:—
 CLYDE SMITHSecretary
 LARRY TAGGARTVice-President
 MR. BALLAMAdvisor
 LAEL ALLENPresident



"There's no business like Show Business"

First Row, left to right:—
 M. CHAMBERS, C. LAMBROS, C. SMITH, L. ALLEN,
 L. TAGGART, J. HEATON, M. JORGENSEN, M. CLAY-
 SON, J. POND.

Second Row:—
 S. PACE, L. RIGBY, K. KENDELL, G. HENDRICKS, B.
 COMISH, M. ESKELSON, K. COMISH, S. LARSEN, B.
 TOOMBS, W. MATHER, MR. BALLAM.

Third Row:—
 M. LOOSLE, D. CLARK, H. EWING, R. GOODWIN, P.
 ROBERTS, J. BUTTARS, T. JENSEN, M. GODFREY, S.
 RICKS, E. MOWLEM, A. ALLEN.

Fourth Row:—
 M. HILL, K. GODFREY, B. PITCHER, R. KENDALL, W.
 SAUNDERS, B. SCROWTHERS, B. VIEBEL, Z. BERGESON,
 M. COLEMAN, L. DAY.



Seated, left to right:—
S. REESE, Co-President — A. HILL, Director.
Standing, left to right:—
G. HENDRICKS, Secretary; M. PETERSON, Manager; D. ALLEN, Co President; G. BLAIR, Director

BAND CLUB

Although it is one of the newest clubs, the Band Club is always there to do its part in games and rallies. Under the guidance of Sherrill Reese and Dennis Allen, co-presidents; and Grace Hendricks, secretary, the club sponsored a dance after a basketball game, as well as adding spirit to the school.



First Row, left to right:—

J. THAIN, R. HANSEN, R. OLSEN, G. HENDRICKS, D. ALLEN, S. REESE, A. HILL, M. PETERSON, S. TALBOT, K. GILBERT.

Second Row:—

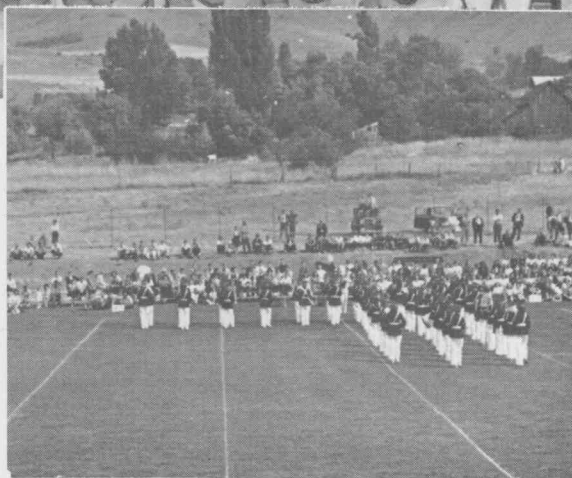
N. ALLEN, E. KARREN, D. BULLEN, B. DONE, M. SPACKMAN, W. JESSOP, D. BOWLES, E. THOMAS, M. WAITE, A. HILLYARD, G. BLAIR, I. JOHNSON.

Third Row:—

MR. ANDERSON, S. SPACKMAN, L. RINDLISBACHER, L. KENT, C. MUNK, Q. COLEMAN, K. NOBLE, L. RIGBY, J. PITCHER, J. SIMPSON, S. JENSEN, A. BAIR, B. STODDARD, L. TRAVELLER, D. HENDRICKS, D. HANSEN, L. TAGGART, K. SPRING, S. HANSEN.

Fourth Row:—

V. DUCE, S. ANDERSON, A. ROMERO, A. ROUNDY, S. BAER, T. STOWELL, F. VEIBEL, D. BULLEN, G. COLEMAN, P. SMITH, K. JORGENSEN, L. McKNIGHT.



"Blow, Gabriel, Blow!"

FUTURE FARMERS OF AMERICA

The F. F. A. is composed of chartered state associations which, in turn, are made up of local chapters situated in the high schools. The North Cache chapter is headed by the following officers: Lee Downs, president; Garth Benson, vice-president; Jess Harris, secretary. Mr. Bair and Mr. Andher act as advisors of the organization. They have sponsored rallies and the Harvest Ball, in connection with the F. H. A.



First Row, left to right:—
L. PERKES, Historian; A. HOFFMAN, Watchdog;
G. BENSON, Vice-President; G. RIGGS, Treasurer.
Second Row:—
LEE DOWNS, President; J. HARRIS, Secretary;
M. BENSON, Reporter.



Exploring New Fields

First Row, left to right:—
G. BENSON, M. BENSON, D. GRIFFIN, L. DOWNS, L.
PERKES, J. HARRIS, A. HOFFMAN, MR. ANDHER.

Second Row:—
M. OLSEN, H. FALSLEV, R. MEIKLE, R. HOLT, F. FULL-
MER, T. JOHNSON, R. BUTTARS, D. BELL, R. LAMB,
J. G. RIGBY.

Third Row:—
N. PAYNE, F. FISHER, E. FONNESBECK, A. WHEELER,
E. PIERCE, G. BELL, M. BAIR, L. MURRAY, D. BENSON,
M. SANDERS, N. COOLEY, MR. BAIR.

Fourth Row:—
O. JONES, B. CHAMBERS, D. JOHNSON, D. IZATT, D.
HARDMAN, J. PLOWMAN, S. BINGHAM, K. BALLS,
D. MONSON, N. ERICKSON.



Left to right:—
 BAR DEE STOWELLPresident
 JOYCELYN HEAPSSecretary
 CAROL PLOWMANVice-President
 MISS FISHERAdvisor

SOPHOMORE PEP

This organization of Greenlings, led by Bar Dee Stowell, president; Carol Plowman, vice-president; Joycelyn Heaps, secretary; and Miss Fisher, advisor, has proved itself ready for the next two years. They have contributed much to the school events by sponsoring a rally, marching at games, and completing many other projects.



First Row, left to right:—

B. STODDARD, A. BAIR, Z. LEAVITT, P. THOMPSON, P. TRIPP, D. WILLIAMS, M. MONSON, J. HEAPS, C. PLOWMAN, B. STOWELL, A. ROUNDY, J. WISER, S. BAIR, C. BINGHAM, J. JORGENSEN, D. RICHARDSON, E. FALSLEV.

Second Row:—

P. RICHAN, C. MUNK, E. KARREN, J. GORDON, M. FACER, R. FACER, E. HANSEN, M. LOW, J. READ, B. READ, J. ALLSOP, A. ROMERO, M. PERKES, M. WAT-TERSON, D. KEARL.

Third Row:—

N. EGAN, V. KENT, L. HYER, W. OLIVERSON, C. NEL-SON, N. CORBRIDGE, M. DANIELSON, J. RIGBY, V. GOODSSELL, J. JORGENSEN, M. MORTENSEN, L. AN-DREW, J. MERRIOT, C. KIRBY, F. RASH, J. GREENE, B. CHRISTENSEN, L. RINDLISBACHER, R. KEARL, F. THORNLEY, M. BAIR, C. BLANCHARD, MISS FISHER.

Fourth Row:—

L. SEAMONS, K. JENSEN, M. HAWKINS, D. GITTINS, S. ANDERSON, J. HODGES, V. DUCE, M. ANDERSON, C. KARTCHNER, C. CORBETT, J. JENKINS, L. SPETH, L.



"Tickets, Please"

NOBLE, D. HESS, W. CROCKETT, R. McARTHUR, C. DAINES, G. BALLS, A. LAWRENCE, A. JENKINS, N. ALLEN, J. GORDON, V. THOMPSON.



COSMA NU

First Row, left to right:—

B. LEFEVRE, L. THOMAS, MRS. BALLAM, D. KUNZ, M. BUTTARS.

Second Row:—

J. ROGERS, I. HOUSLEY, L. WADDOUPS, J. THOMAS, C. SJOSTROM.

FUTURE HOMEMAKERS OF AMERICA

First Row, left to right:—S. CLARK, MISS POSTMA, A. BRONSON, R. OLSEN, E. CHRISTENSEN, R. BAIR.

Second Row:—E. BUTTARS, A. B. LINNARTZ, E. COLEMAN, J. CHRISTENSEN, E. THOMPSON, D. RAVSTEN, S. GRIFFITHS, M. FUNK.

Third Row:—B. BUTTARS, G. ARCHIBALD, L. KENT, N. SPACKMAN, M. BRONSON, L. HODGES.



BAND SPONSORS



Sponsors:—CAROLE BINGHAM, MARY LOU HANSEN, FAYE LAMB, JOYCE PETERSON, JOYCE REEDER.

Carrying the school's banner in front of our band in numerous parades, these sponsors, who were elected by the band members, have represented our school well.

BAND OFFICERS

Band Officers:—SHERRILL REESE, President; LaDAWN THAIN, Secretary; WILLARD JESSOP, Vice-President; BETH STODDARD, Reporter.

With the help of these capable officers, the band has been able to carry out their activities most successfully. They played an important part in making the Region Band Contest here a success.

CHORUS OFFICERS



Chorus Officers:—BOB CHAMBERS, Vice-President; JANET PITCHER, President; COY FACER, Secretary; LARRY HASLAM, Vice-President; MR. LOOSLE (seated).

Besides thinking up fines and counting the money they received from them, these officers were very active in carrying out the activities of the chorus.

*Dear Worth -
Success & Good
Luck to a Cute Senior.
Joyce Reeder*



CHORUS

First Row, left to right:—J. Green, M. Danielson, N. Corbridge, M. Facer, R. Facer, K. Hansen, L. Purser, C. Weeks, G. Webb, G. Blair, J. Hendricks, C. Monson, L. Hillyard, C. Rash, I. Hyde, H. Balls, Z. Leavitt, M. Eskelson, J. Pitcher, J. Hillyard, L. Cottle, L. Peterson, C. Facer, C. Hansen, C. Blanchard, M. Bronson, C. Plowman, B. Stoddard, N. Spackman, J. Allsop, L. Pearson, K. Kendell.

Second Row:—J. Jorgenson, C. Nilson, J. Hodges, V. Duce, R. McArthur, V. Goodsell, S. Griffiths, B. Ford, C. Sjostrom, S. Richards, B. Le Fevre, L. Bingham, E. Drury, L. Hodges, J. Thomas, J. Gordon, B. Danielson, J. Claypool, L. Griffin, M. Funk, E. Laursen, R. Velson, M. Nielson, S. Jensen, C. Jenkins, J. Christensen, G. Archibald, L. Erickson, M. Monson, J. Read, M. Low, M. Mortensen, J. Rigby, S. Anderson.

Third Row:—Mr. Loosle, Mr. Anderson, A. Meyer, F. Lamb, F. Thornley, L. Andrew, J. Merriott, J. Grant, F. Rash, G. Balls, P. Richman, V. Kent, D. Gittins, L. Hyer, N. Allen, J. Wiser, B. Stowell, B. Christensen, C. Johnson, S. Spackman, J. Gordon, B. Danielson, J. Claypool, L. Griffin, M. Funk, V. Peterson, R. Bair, L. Thomas, W. Crockett, E. Falslev, D. Pearson, L. Seamons, M. Sorenson, E. Rogers, C. Saunders, D. Johnson, A. Izott, E. Christensen, J. Jenkins, B. Read, D. Williams.

Fourth Row:—D. West, R. Ricks, V. Harrison, E. Griffin, T. Carlson, A. Haws, R. Godfrey, B. Pitcher, R. Neeley, A. Bair, D. Kearl, C. Bingham, A. Wheeler, V. Blair, V. Buxton, T. Coley, T. Traveller, L. Cantwell, D. Pond, D. Bullen.

Fifth Row:—M. Ashcroft, L. Talbot, P. Shumway, B. Chambers, L. Haslam, F. Fisher, R. Mather, J. Pond, R. Kendell, K. Feltman, D. Bell, J. Sanders, W. Saunders, Z. Bergeson, T. Thompson, K. Balls, M. Coleman, M. Rogers, E. Pierce, C. Hansen, B. Scrowther.

Sixth Row:—N. Winn, H. Reese, H. Ewing, W. Jones, J. Hansen, B. Pitcher, D. Denson, L. Godfrey, G. Bullen, L. Stephenson, M. Olsen, N. Kelsey, W. Petersen, T. Nivison, P. Perry, O. Jones, S. Preece, G. Lambros, L. Day, W. Wiser.

ACTIVITIES

The largest chorus in years, consisting of 175 members, was presented this year in many outstanding events. Portions of the chorus have put on several programs in various wards throughout the area. An operetta was presented under the direction of Mr. Loosle, as was the annual Christmas Cantata, "Yuletide Memories." They also participated in the Region Music Festival.

This is the first year of an organization called the Advanced Chorus. Much credit is due them for the successful completion of their various activities.

BAND

ACTIVITIES

Under the leadership of Mr. Anderson, the North Cache Band has made a good representation in many parades at various celebrations throughout the county.

They participated with other bands at the Utah State Agricultural College Homecoming Day activities and gave outstanding performances at our home football games. They also made a good showing at the Region Band Contest, which was held here at North Cache.

Much credit is due them for their untiring efforts and for the acclaim they have brought to our school.



First Row, left to right:—G. Bair, S. Jensen, D. Bullen, D. Bowles, E. Karren, K. Jorgensen, S. Spackman, E. Thomas, M. Waite, G. Hendricks, N. Allen.

Second Row:—J. Simpson, C. Munk, L. Traveller, T. Stowell, B. Stoddard, A. Bair, A. Jenkins, J. Noble, J. Pitcher, Q. Coleman, B. Pitcher, F. Veibell, I. Johnson, M. Spackman, L. Thain, L. Rigby, R. Hansen.

Third Row:—D. Hendricks, B. Done, R. Olsen, S. Baer, R. Godfrey, J. Thain, K. Noble, S. Reese, D. Allen.

Fourth Row:—V. Duce, L. Rindlisbacher, S. Andersen.

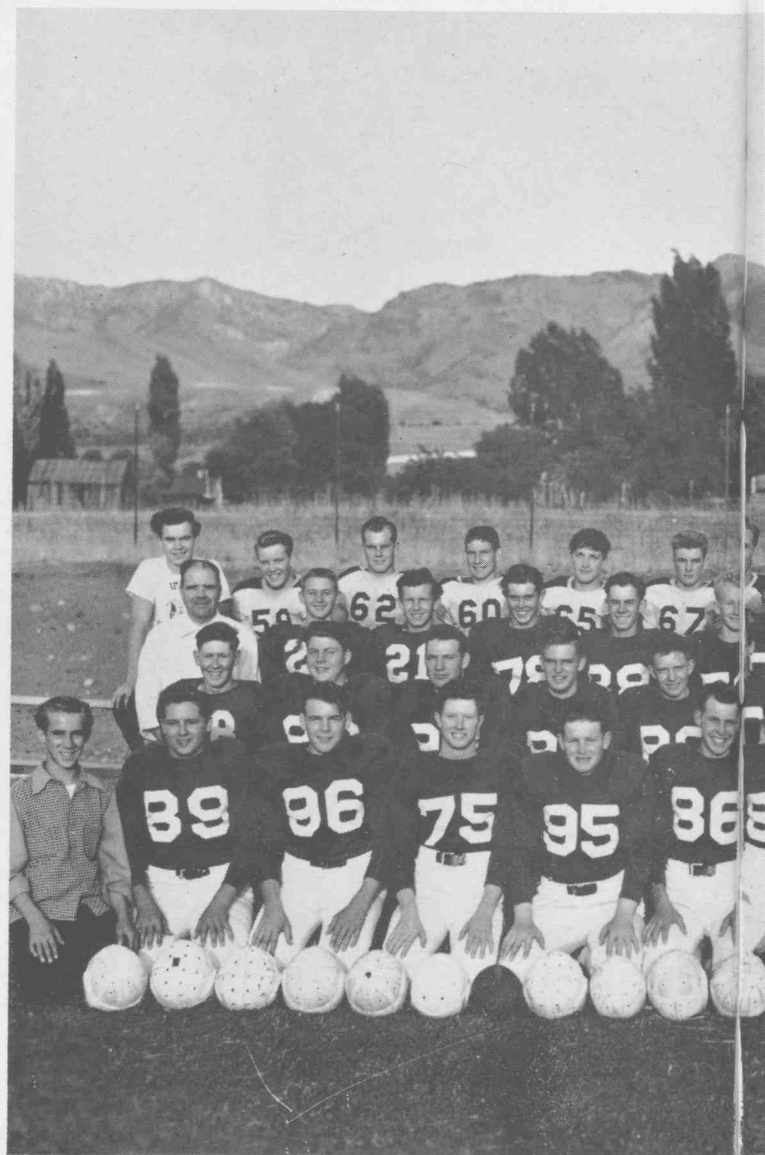
First Row (standing):—Mr. Anderson, C. Bingham, J. Reeder, W. Jessop, M. Peterson, A. Hillyard, G. Smith, L. McKnight, L. Taggart, K. Spring, P. Smith, G. Coleman, B. Veibell, L. Baird, T. Smith, S. Hansen, D. Hansen, M. Hansen, F. Lamb, J. Peterson.

Second Row (standing):—B. Pilkington, A. Romero, A. Hill, C. Thurston, K. Feltman, B. Condie, A. Roundy, J. Wiser, K. Gilbert, S. Talbot.

Huber Whiting

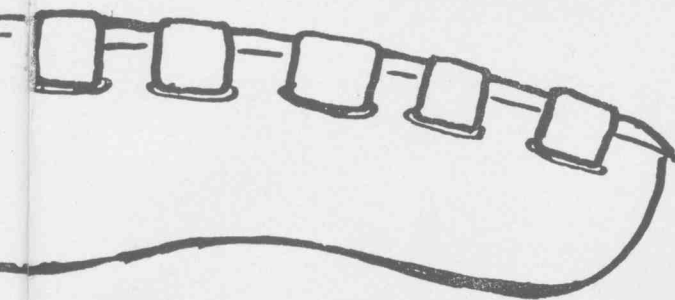
Football

To you, the football team of 1949, we give our heartiest thanks for the effort you put forth. We, as a student body, thank you. Although you did not win many games, you contributed much by the fine sportsmanship you displayed.



First Row, left to right:—D. Valentine, F. Fullmer, B. Jones, G. Salisbury, E. Griffin, R. Hyde, F. Karren, D. Stocks, D. Rasmussen, A. Hyer, J. Sanders, T. Coley.

Second Row:—J. Cash, C. Andreason, V. Bright, A. Hillyard, D. Gittins, K. Hansen, B. Colley, B. Johnson, D. Weeks, W. Jessopp, Mr. Bair.



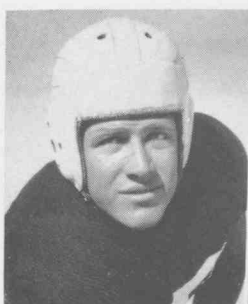
1949-'50

Captained by Dayna Stocks, the Bulldogs defeated Weber and Preston; but because of the fine attitude they displayed in the other games, they were the victors in sportsmanship if not in points.

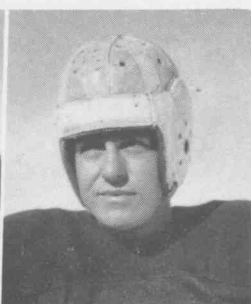
Third Row, left to right:—Coach Whiting, L. Balls, D. Hill, M. Cooley, B. Chambers, F. Johnson, D. McArthur, V. Karren, D. Allen, H. Anderson, L. Cantwell.
Fourth Row:—R. Godfrey, J. Griffin, B. Scrothers, B. Lamb, R. Pearce, T. Johnson, A. Haws, R. Meikle, F. Veibel, R. Neeley, R. Wood, W. Roskelly, H. Whiting.



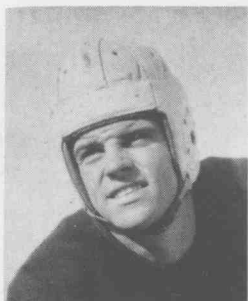
FOOTBALL



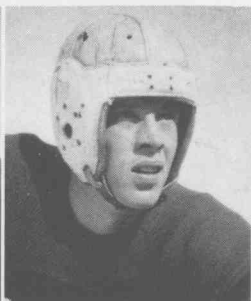
DAYNA STOCKS



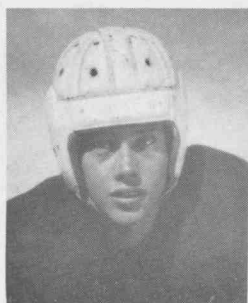
DAVID GITTINS



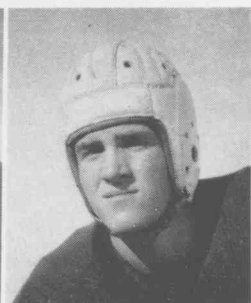
KEITH HANSEN



FARRELL KARREN



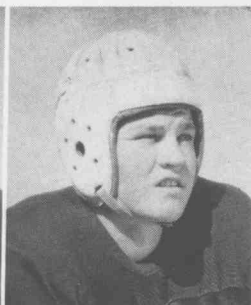
MAX COOLEY



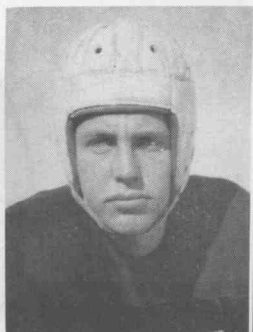
JUNIOR SANDERS



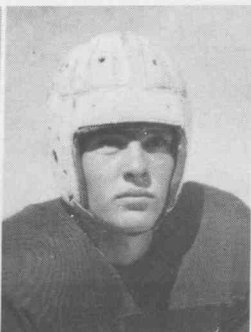
VESS KARREN



BOB COOLEY



ROSEL HYDE



DAVID McARTHUR



Left to right:—

DALE VALENTINE, Team Manager; COACH WHITING;
DAYNA STOCKS, Captain; TOMMY COLEY, Team Manager

Under the capable leadership of Captain Snowy Stocks and Coach Heber Whiting, this year's football team went into every game with determination and eagerness. This attitude made them worthy opponents for any team.

FOOTBALL SCORES

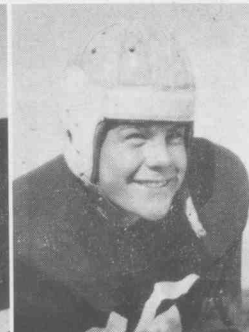
North Cache	13	—Preston	12
North Cache	0	—East	21
North Cache	13	—Alumni	26
North Cache	0	—South Cache	21
North Cache	0	—Box Elder	21
North Cache	0	—Logan	6
North Cache	13	—Weber	12
North Cache	13	—Bear River	26



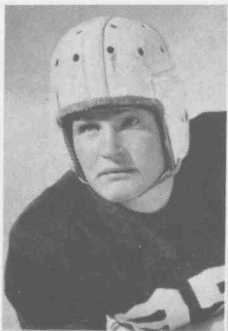
DALE WEEKS



CLIFFORD ANDREASON



BOYD JONES



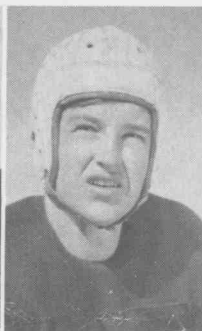
ELLIS GRIFFIN



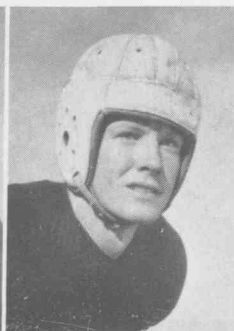
JOHN GRIFFIN



ROBERT WOOD



DELL ALLEN

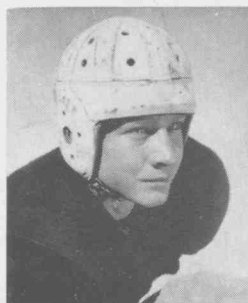


GRANT SALISBURY

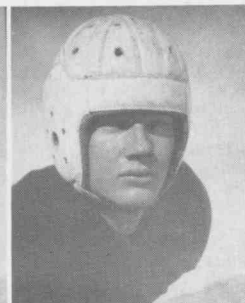


DENNIS ALLEN

LETTERMEN



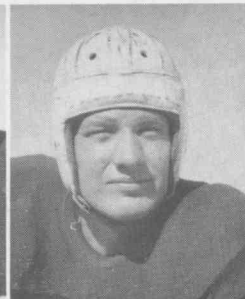
ANDREW HYER



DARWIN RASMUSSEN



WILLARD JESSOP



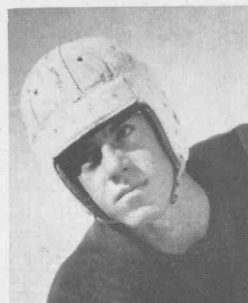
VERNON BRIGHT



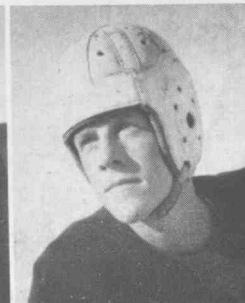
FRANK JOHNSON



BART JOHNSON



BOB CHAMBERS



LEE CANTWELL

Dear Mr. Smith,

BASKET

19



First Row, left to right:—ROSEL HYDE, WILLARD J. GLENN WINN, BART JOHNSON. Second Row:—D. LARRY HASLAM, FRANK JOHNSON, TEDDY S.

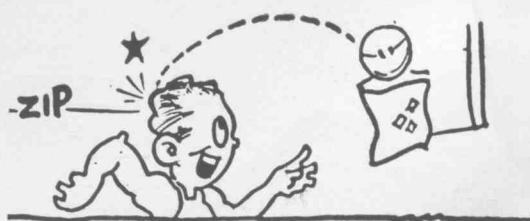


T BALL

50

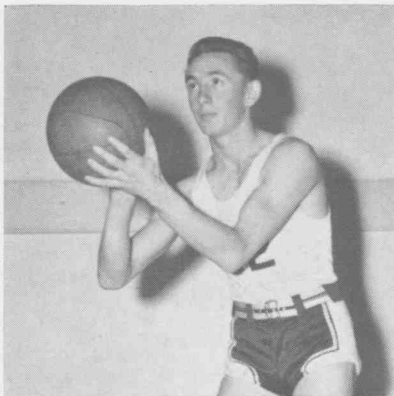


ARD JESSOP, REESE NEAGLE, COACH WHITMAN,
 v:— DAVID GITTINS, Manager; ROBERT CHAMBERS,
 DY SMITH, LaMON PERKES.

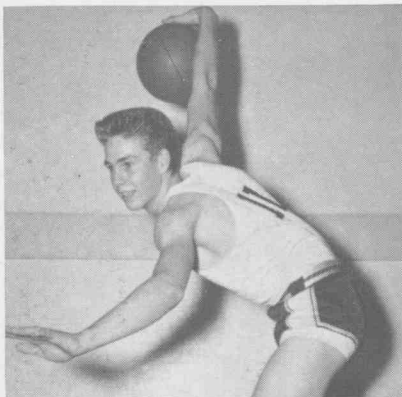


to can in with

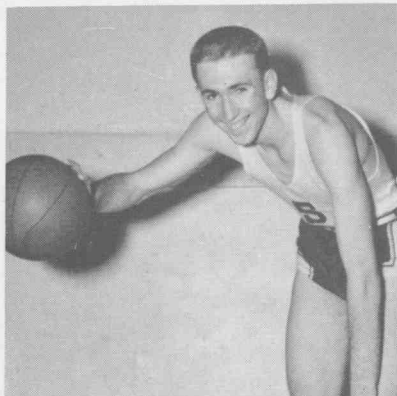
BASKETBALL



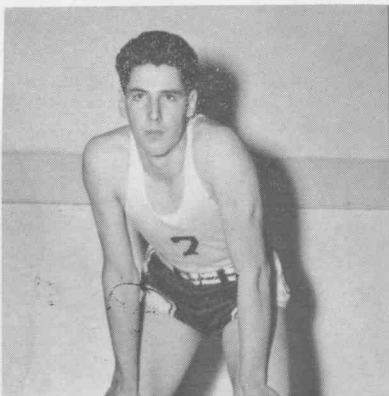
LaMON PERKES



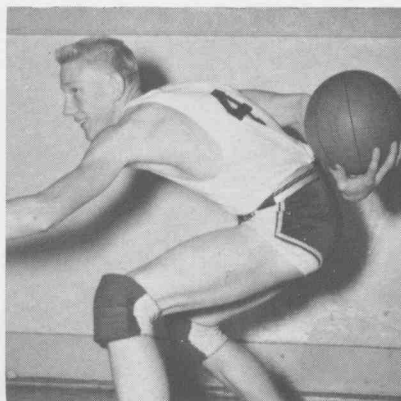
BART JOHNSON



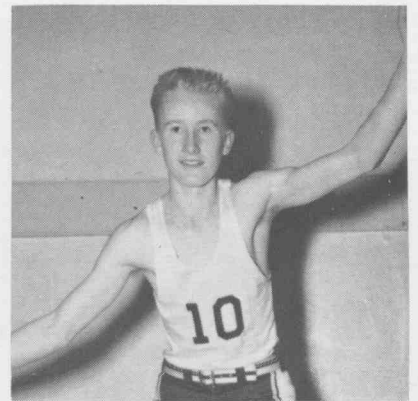
REESE NEAGLE



GLENN WINN



WILLARD JESSOP



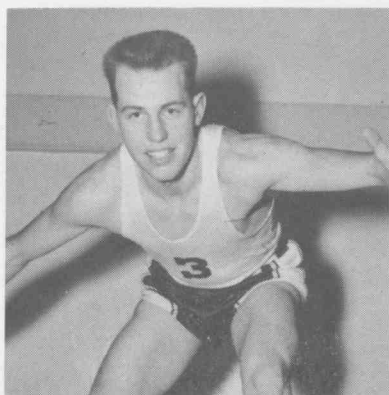
FRANK JOHNSON



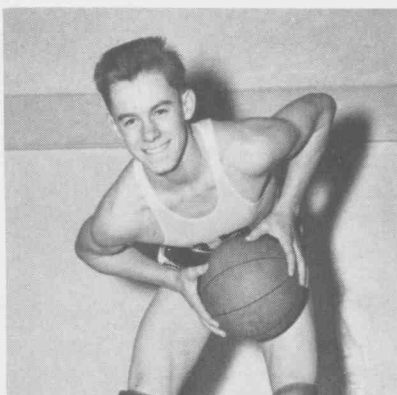
Left to right:—
COACH WHITMAN, LaMON PERKES, Captain; DAVID
GITTINS, Manager.

To the host of Juniors and the two seniors who represented North Cache as our basketball team we give our heartfelt thanks. Although they didn't receive a place in the region standing, they did make it "tough" for the other teams to win.

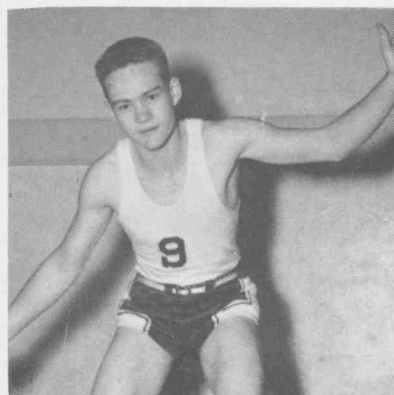
The captain was chosen each week before the game, and so each of the fellows had his turn in keeping the tradition of sportsmanship ever present.



ROSEL HYDE

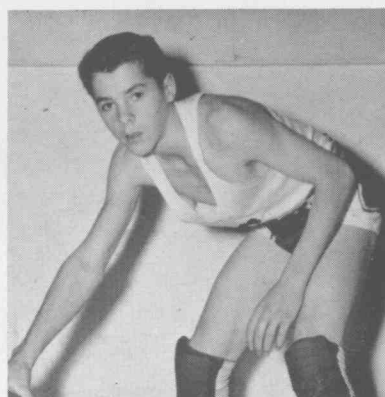
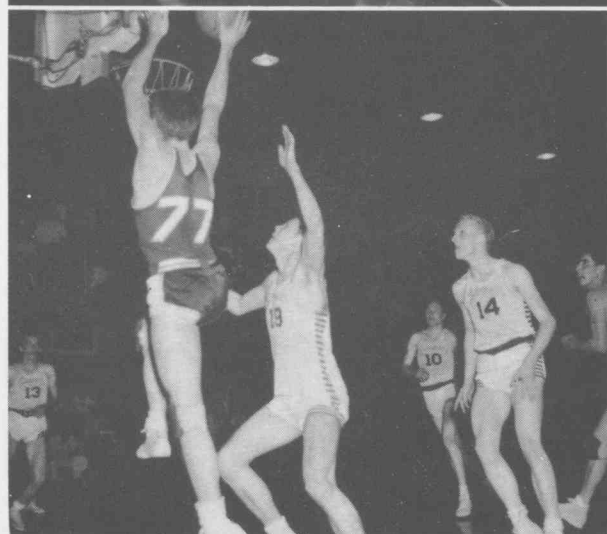


ROBERT CHAMBERS



LARRY HASLAM

LETTERMIEN



TEDDY SMITH

BASKETBALL SCORES

Region Scores:

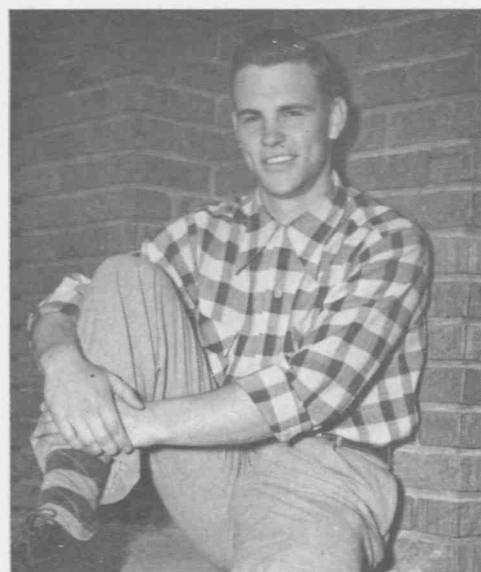
North Cache	26	Box Elder	25
North Cache	32	South Cache	45
North Cache	27	Bear River	35
North Cache	22	Weber	41
North Cache	15	Logan	35
North Cache	21	Box Elder	25
North Cache	35	South Cache	37
North Cache	35	Bear River	50
North Cache	34	Weber	32
North Cache	30	Logan	42

Pre-Season:

North Cache	23	Preston	34
North Cache	54	West Side	29
North Cache	34	Preston	28
North Cache	34	Madison	41
North Cache	36	St. Anthony	22
North Cache	40	Ashton	27
North Cache	24	Sugar City	46

PLANT MEDAL

Each year an award is given by Mr. H. T. Plant to the senior boy with the outstanding athletic record. This year Keith Hansen, from Amalga, who has participated in football two years, baseball one year, and track three years, has been awarded this medal.



Plant Medal --- KEITH HANSEN

CHEERLEADERS

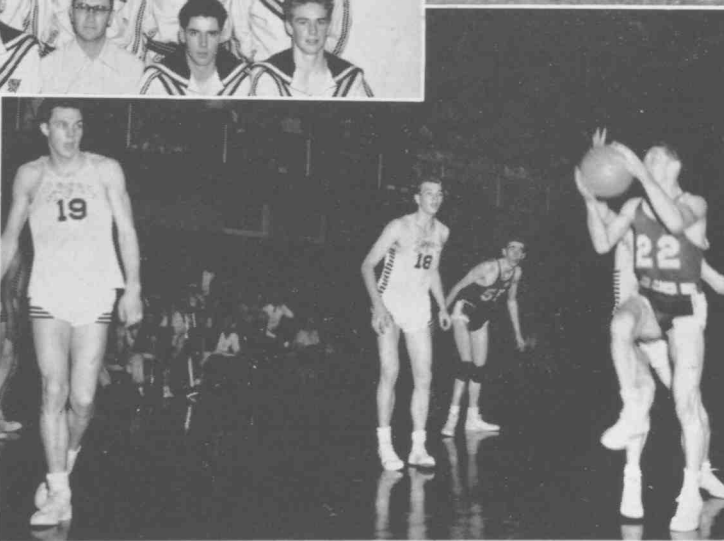
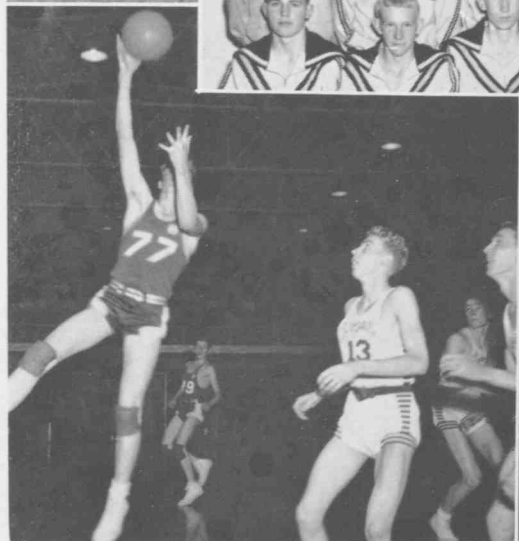
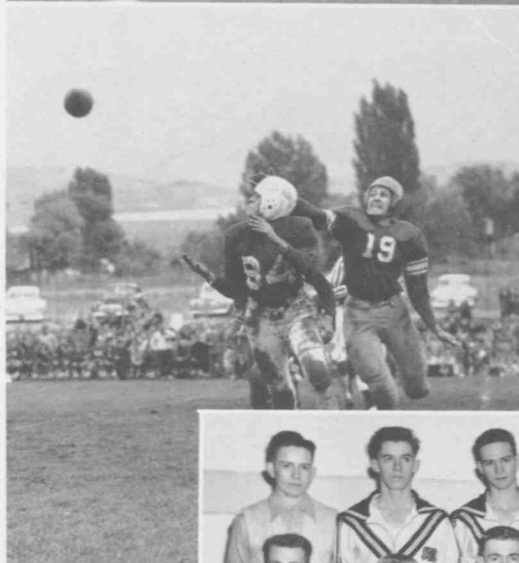


DELWIN POND

JOYCE PETERSON

DALE VALENTINE

Songs and cheers can always be heard through the halls of North Cache, because of the boosting of our cheerleaders, Delwin, Joyce, and Dale. When our team was losing and our spirits were low, they did their utmost to spur us on to victory.



Dear Mother

BASEBALL

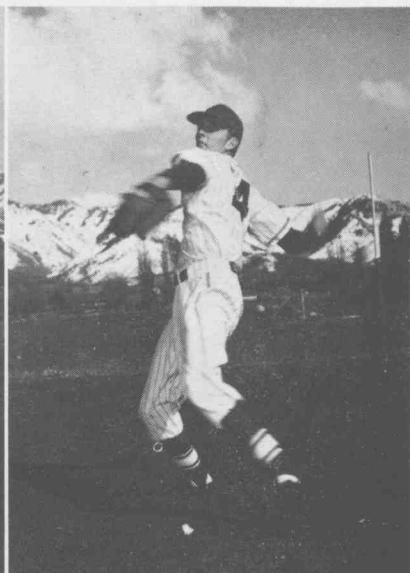
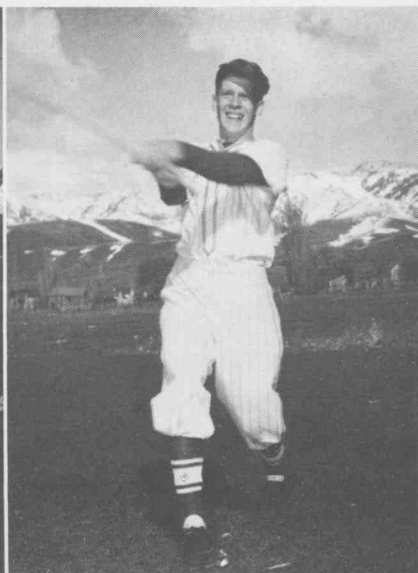
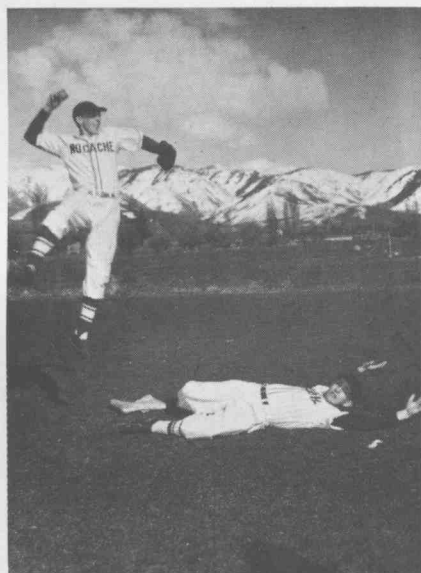


First Row, left to right:—D. BATEMAN, L. PERKES, E. GRIFFIN, B. JOHNSON, R. NEAGLE, A. HAWS, R. HYDE, D. GITTINS, G. RIGGS.

Second Row:—COACH JAY WHITMAN, D. HANSEN, G. JONES, B. SMITH, B. SPARKS, B. LAMB, F. JOHNSON, F. KAREN, J. SANDERS, L. DAY, G. SKINNER.

Third Row:—J. REESE, R. KENDALL, P. PERRY, L. McKNIGHT, R. HOLT, R. WOOD, W. ROSKELLEY, M. COOLEY, D. BROWN, K. SPRINGS, F. ANDERSON.

The North Cache baseball nine, coached by the immortal Jay Whitman, hope to maintain their high Region One standing. The team, built around the strong nucleus of a hustling infield, has developed into a topnotch baseball nine. Our hearts are poured out to the fellows who gave their all to bring home victories to North Cache.



TRACK



First Row, left to right:—T. COLEY, Manager; D. RASMUSSEN, D. BALLS, D. BOWLES, W. SAUNDERS, C. PUFFER, C. JORGENSEN, A. HYER, P. ROBERTS, D. HILL.

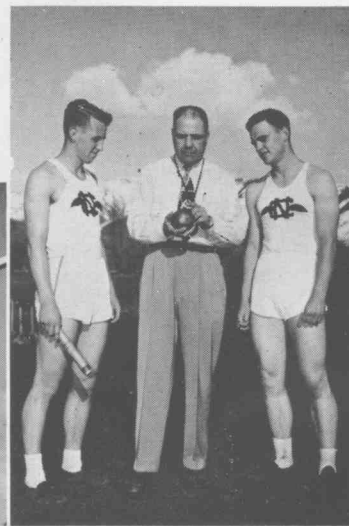
Second Row:—C. ANDREASON, Manager; V. HARRISON, L. THOMPSON, G. SALISBURY, W. JESSOP, K. HANSEN, R. WAITE, D. BULLEN, B. NIELSEN, K. FELTMAN, T. SMITH, COACH WHITING.

Third Row:—J. BUTTARS, B. BROWN, K. HAMP, T. CARLSON, G. BULLEN, M. HILLYARD, L. CANTWELL, D. BELL, R. ADDAMSON, D. McARTHUR, D. STOCKS, R. GODFREY.

Fourth Row:—V. HARRISON, V. BLAIR, S. HANSEN, O. JONES, T. JOHNSON, M. LEWIS, L. WESTOVER, B. CHAMBERS, L. RICHARDSON, G. LAMBROSE, H. WHITING, K. MOOSMAN.

Under the able leadership of Coach Heber Whiting, the cindermen of N. C. have given all they had to keep N. C. at her usual high standing in track. Nine returning lettermen bolstered the hopes, and along with promising Juniors and Sophomores, our track team was outstanding.

Track Captains:
RICHARD WAITE
KEITH HANSEN
Coach:
HEBER WHITING





Queen:
BON ADELL COMISH

Attendants:
FAYE LAMB
JEAN ALLSOP

Escorts:
DAYNA STOCKS
DAVID GITTINS
BOYD JONES

This long-awaited dance unites the present students and alumni. The queens were chosen by the members of the 1949-50 football team and their escorts were members of the football team.



HARVEST BALL

Queen:
DIANE RAYSTEN

King:
DOUGLAS GRIFFIN

Attendants:
LORNA GRIFFIN
ANNA BETH LENNARTZ
MARK BENSON
GARTH BENSON



The students of North Cache danced to the theme of "Blue Moon" at the annual Harvest Ball. This dance, sponsored by the Future Farmers and Future Homemakers, was an outstanding success, with the queen and king chosen by the clubs, respectively.



SWEETHEART BALL

Queen:
CAROL WEEKS

King:
LA VAR THOMPSON

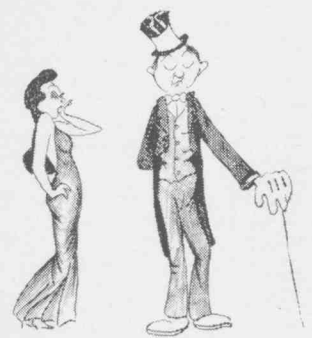
Attendants:
LOIS ERICKSON
MARLENE TELFORD
DENNIS ALLEN
DEE HILL

Crown Bearer:
STEPHEN TUESCHER

Flower Girl:
MARCIA MEYER



With the traditional candle-light ceremony as the highlight of the dance, the Alpha Theta and Booster Club sponsored the annual Sweetheart Ball. "Memories" was chosen as the theme of this formal dance.



JUNIOR PROM



Queen:
MARY LOU HANSEN

King:
GLEN R. WINN

Attendants:
MOLLY ANN LAST
CARLA GILBERT
ROBERT CHAMBERS
LEW DELL BALLS

The middle-classmen of 1949-50 upheld the tradition of previous years in their annual dance and assembly. The Junior Promenade made this dance an outstanding and highly successful one. This year's theme was "Some Enchanted Evening."



SPRING HOP



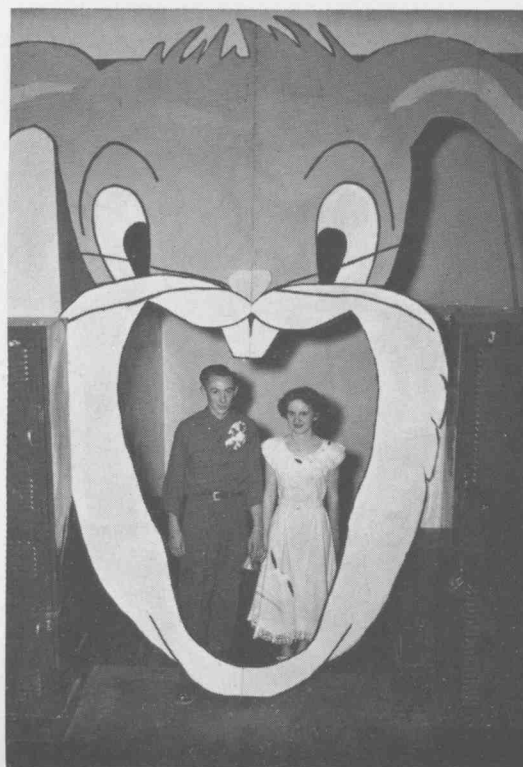
Most "Preferred Egg"

BRUCE BROWN Soph

THAD CARLSON Senior

BOB CHAMBERS Junior

With each girl escorting her "man of the moment," the Spring Hop sponsored by the Girls' League was hailed as a great success. The most "preferred egg" was chosen from each class and reigned over the dance. The boys attending were given a corsage of vegetables in keeping with the theme, "Easter Parade."



APRIL FOOL'S DANCE

"Fools of every size, shape, and description were the order of the day at the afternoon April Fool's Dance. There were many original costumes.



Prizes were given for the silliest, most original, and distinctive characters. The prizes were boxes of home-made candy.

Everything from Cannibals and Chinamen to Egyptian dancers were present. Stunts were put on by different groups.



Dear Mr. Smith,



TRAFFIC DANCE

Everyone, decked out in their brightest stockings, all-day-suckers in their mouth, was continually chased by policemen for violating the traffic laws. Prizes were given for the brightest stockings.



REGION JAMBOREE



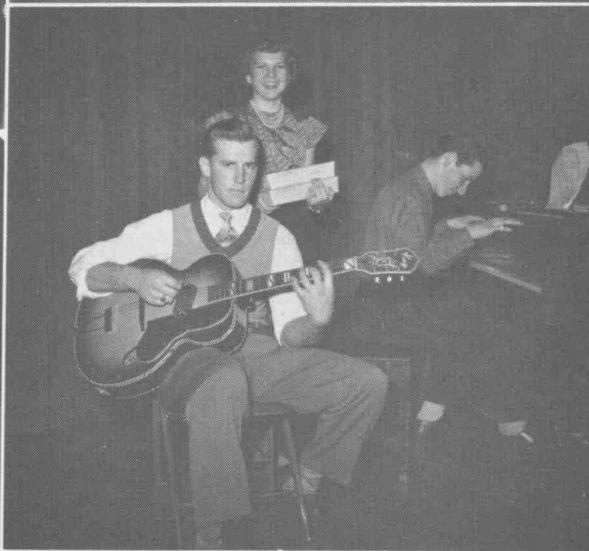
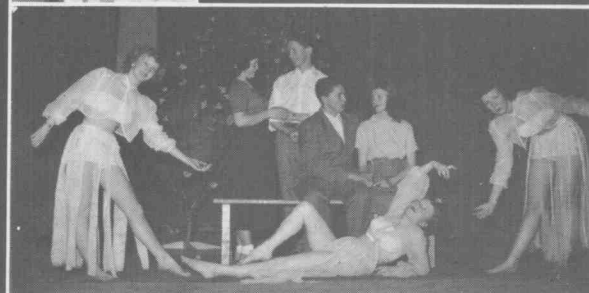
A three-school jamboree was held this year to foster friendship and fellowship between the schools of this valley. Three candidates for queen were chosen from each school, with final judging by one of the other schools. Basketball games and a dance all added to the success of the occasion.

Left:—

QueenARLENE MEYER

Student Body PresidentFRANK LARSEN

OUTSTANDING ASSEMBLIES



Dean W. Smith

OPERA "THE BELLE OF BARCELONA"



The operetta, "The Belle of Barcelona," by Charles Ross Chaney, was presented by the combined chorus classes. Strafford B. Loosle was director, with Oral Ballam and Grant Anderson as assistant directors.



The operetta had four performances. At each performance the cast was received with enthusiastic applause by the large audiences. Gay Spanish costumes, dancers, and songs added to the performance.

Much credit is due to the cast for their untiring efforts to make this the outstanding success that it was.

CAST:

Luis de Montero	BOYCE PITCHER
Gloria de Montero	JOYCE HILLYARD
Margarita	CLEONE MONSON, CAROL JOHNSON
Francisco de la Vega	DAYNA STOCKS
Pedro	DOYLE WEST
Emilio	DELL BULLEN
Don Juan	LYNN TALBOT
Don Jose	ROSS KENDALL
Miss Ayers	LaDENE HILLYARD

Lt. Wright	LEE CANTWELL
Pat Malone	LARRY TAGGART
Capt. Colton	FRANK LARSEN
Dona Marcela	CARLA RAE RASH
Dona Anita	LeNORA PETERSON



PLAY "THE SEVEN SISTERS"



CAST:

Terka	JEAN ALLSOP
Liza	RAE FACER
Klard	DARLENE HANSEN
Katinka	RAE ALLEN
Sari	BON ADELL COMISH
Ferenz Horkoy	RICHARD WAITE
Colonel Radviany	FRANK LARSEN
Toni Teleki	DONALD BOWLES
Michael Sandorffy	THAD CARLSON

Ella	NADENE ALLEN
Mrs. Gyurkovics	MAXINE CLAYSON
Janko	ROSS KENDELL
Mitzi	MARLENE TELFORD
Gida Radviany	LARRY TAGGART

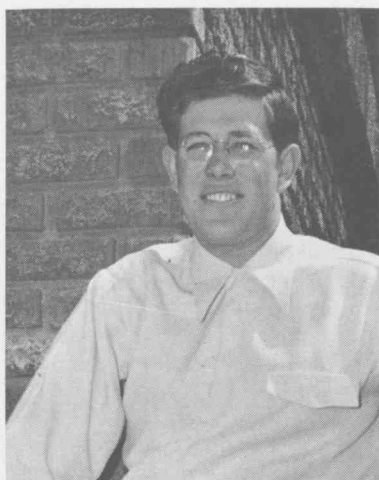


The Drama Department, under the capable direction of Oral Ballam, presented the play "Seven Sisters," by Edith Ellis, on December 7.

The play takes place in a small town not far from Budapest, Hungary. As was the custom, the younger sisters could not marry until the older sisters were married. The action of the play centers around the antics of Mitzi Syrukovics and her boy friend, Ferenz Harkoy, to "marry off" the older sisters. Many hilarious situations arose from this "marrying off" process.



CITIZENSHIP AWARDS



DAYNA STOCKS



ARLENE MEYER

Each year the Kiwanis Club of Smithfield presents an award to the outstanding girl and boy of the senior class. The award is based on leadership ability, grades, participation in school activities, and all-around achievement.

The awards this year were presented to Arlene Meyer, Smithfield, and Dayna Stocks, Lewiston.



ROBERT CHAMBERS

ORATORICAL AWARDS



JANICE HEATON

The Richmond Lions present these awards each year to students from North Cache. Each speech is based on its originality and effectiveness of presentation. The awards this year were given to Bob Chambers, a junior from Smithfield, and Janice Heaton, a sophomore from Cache Junction.



Left to right:—
DAYNA STOCKS, BRUCE PITCHER, THAD CARLSON.
 Absent:—**BOB COOLEY, FRANK LARSON.**

DEBATE AWARDS

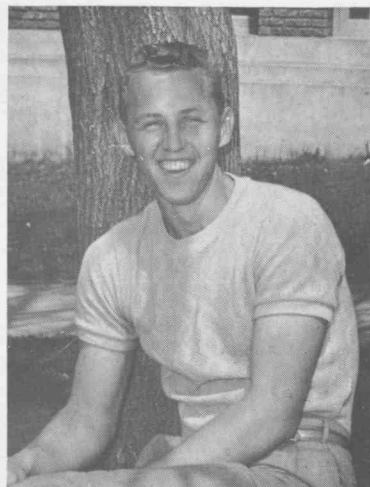
These debate awards are presented to seniors who have excelled in region and state debate tournaments. They must have outstanding records for two years.

The awards were given to Thad Carlson, Dayna Stocks, Bruce Pitcher, Bob Cooley, and Frank Larson.



DRAMATIC AWARDS

BON ADELL COMISH
RICHARD WAITE



MARLENE TELFORD



MAXINE CLAYSON

Dramatic awards were given to four students this year. They were based on the participation of the students in the school plays, and in extra activities such as poetry festivals and speech contests. The awards were given to Richard Waite, Marlene Telford, Maxine Clayson, and Bon Adell Comish.

Dear Mr. Smith,

HONOR STUDENTS



First Row, left to right:—S. REESE, L. ALLEN, D. ALLEN, D. STOCKS, D. GITTINS, F. RICKS, J. THAIN, K. KENDELL.

Second Row:—S. JENSEN, I. HYDE, J. BALLS, C. WEEKS, H. GRIFFIN, E. SPACKMAN, D. SKINNER, L. RIGBY, M. J. REESE.

Third Row:—M. GODFREY, M. L. FUNK, R. HANSEN, V. HILLYARD, A. MEYER, L. HILLYARD, P. TAGGART, L. KEARL, P. DAINES, C. FACER, M. SMITH, L. ERICKSON.

Fourth Row:—J. POND, N. PEARSON, E. CHRISTENSEN, J. CHRISTENSEN, A. ALLEN, G. HENDRICKS.

Absent:—BOB COOLEY.

This group of students are the outstanding scholars in the school. Their grades have been a 90 or above average for the three school years. Recognition is due to them for their effort and ability.

The five students with the highest average receive a pin, and the remaining persons receive honor certificates.

DEBATE



First Row, left to right:—J. HEATON, S. ANDERSON, R. ALLEN, K. JOHNSON, L. KENT, S. SPETH.
 Second Row:—J. POND, C. PARKINSON, B. WINN, D. STOCKS, T. CARLSON, D. McCARRIE.
 Third Row:—D. MONSON, Z. BERGESON, T. BINGHAM, V. HARRISON, K. GODFREY, R. HYER.
 Fourth Row:—L. CANTWELL, G. LEAVITT, B. CHAMBERS, MR. PERKINS, V. HARRISON, F. LARSEN, L. WESTOVER.

The topic for debate this year is—"Resolved: That the President of the United States Be Elected by the Direct Vote of the People." Much time and work was spent in planning new angles and solutions on the affirmative and negative sides of this national question.

The various teams, under the instruction of W. W. Perkins, participated in region and state meets. Frank Larsen and Vaun Harrison qualified for the state contest in extemporaneous speaking.



First Row, left to right:—W. Wiser, S. Poulsen, D. Feltman, M. Peterson.
 Second Row:—Mr. Ballam, coach; G. Smith, S. Vail, B. Cooley, B. Jones.

TENNIS

For the first time since 1939, North Cache has formed a tennis team. Strong in doubles, as well as singles, they demonstrate much power and enthusiasm. The team, coached by Oral Ballam, participated in many region meets, and proved they had a place in sports at North Cache.

Dean W. Smith

COOKS



Left to right:—
AMY BAIR, LOLA BELL, ENID BAIR, WAIVIE ALLEN, CLARA B. JOHNSON. Absent:—VERDA PEART.

To "Charlie" and "Dean" go our thanks for the cleanliness and comfort of our school. Armed with brooms and brushes they are familiar and well-liked figures.

BUS DRIVERS



First Row:—Duane Griffin, Wendell Godfrey, Louis Brown, Reginald Rawlins.
Second Row:—Ariel Jorgenson, Wayne Waite, Robert Reeder, Merlin Godfrey, Arrol Smith. Absent:—Howard Bingham.

As the dinner bell rings we all rush to the cafeteria, where we eat tasty foods prepared according to the Basic Seven by these capable cooks. They make eating a pleasure rather than a necessity.

JANITORS

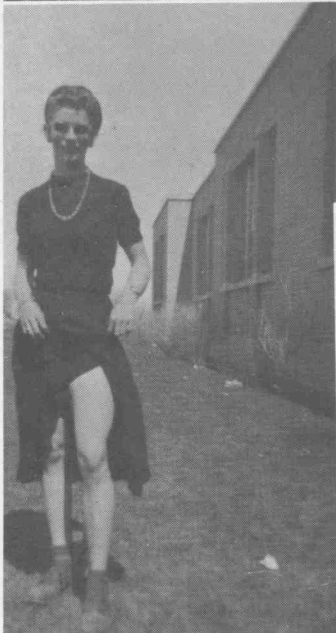


DEAN BULLEN CHARLES PEART

Safely transporting students to and from school each day, and to activities after hours, has been the job of these capable men for the past 172 days.

We greatly appreciate their efforts in our behalf.

QUICK GLANCES

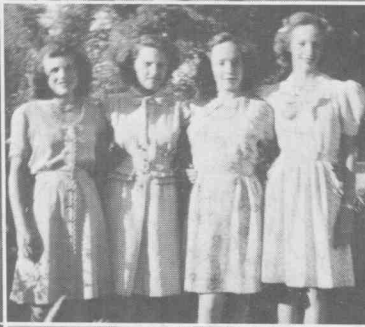


Dear Mother,

HERE, THERE.



AND EVERYWHERE



Dear Mother,

CALENDAR OF EVENTS

SEPTEMBER

- 2—Registration.
- 6—Preston at North Cache.
- 9—Assembly—GET ACQUAINTED DANCE.
- 16—East at North Cache.
- 20—Class organization.
- 23—North Cache at South Cache.
- 30—Alumni Day—Assembly, Dance, Box. Elder at North Cache.

OCTOBER

- 4—Lyceum.
- 7—North Cache at Logan.
- 12—Carbon at North Cache.
- 13—BEET VACATION.
- 28—North Cache at Weber.

NOVEMBER

- 2—Assembly.
- 4—Bear River at North Cache.
- 9—F. H. A. and F. F. A. Assembly.
- 11—HARVEST BALL.
- 14—Book Week.
- 23—Matinee Dance.
- 24—Thanksgiving.
- 30—Senior Assembly.

DECEMBER

- 1—North Cache at Preston.
- 2—Jamboree at Logan.
- 5—North Cache at Malad.
- 6—Lyceum.
- 7—Drama—Matinee, night.
- 9—Safety Program with Ab Jenkins.
- 9—Preston at North Cache.
- 14—Alpha Theta and Booster Assembly.
- 14—Basketball Team on trip.
- 16—SWEETHEART BALL.
- 21—Rexburg at North Cache.
- 22—Cantata.
- 23—Christmas Program.
- 23—CHRISTMAS VACATION.

JANUARY

- 6—North Cache at South Cache.
- 11—South Cache Exchange Assembly.
- 13—Bear River at North Cache; dance.
- 18—Assembly.

- 20—Weber at North Cache.
- 27—North Cache at Logan.
- 31—Lyceum.

FEBRUARY

- 3—North Cache at Bear River.
- 8—Assembly.
- 10—South Cache at North Cache. Dance.
- 17—North Cache at Bear River.
- 22—Bear River Exchange Assembly.
- 24—North Cache at Weber.

MARCH

- 1—Weber Exchange Assembly.
- 3—Logan at North Cache, Band Dance.
- 8—Operetta—Matinee and Evening.
- 9-11—"A" Tournament.
- 15—Junior Class Assembly.
- 17—JUNIOR PROM.
- 22—Assembly.
- 25—Regional Speech, Drama, and Forensic Meet.

APRIL

- 2—Faculty Assembly—APRIL FOOL'S DANCE.
- 5—Girls' League Assembly.
- 7—SPRING HOP.
- 12—Band Concert for school.
- 13—Band Concert for public.
- 19—USAC Band Concert.
- 21—Commercial Contest at South Cache.
- 22—Vocal Contest at Logan.
- 22—Poetry Speaking Festival at USAC.
- 27—Chorus, Ensemble, and Solo Contest.
- 28—Fashion Show.

MAY

- 5—Regional Track Meet.
- 6—Region Band Contest at North Cache.
- 10—Assembly.
- 11—FUN FROLIC.
- 18-19—Award Assembly.
- 22—Yearbook distribution.
- 23—Seminary Graduation.
- 25—Graduation exercises.
- 25—Graduation dance.

INDEX

A	
Assemblies	Page 83
Awards	86-87

B	
Band	63
Band Officers	61
Band Sponsors	61
Baseball	74
Basketball Action shots	70-71-73
Basketball Team	68-69
Basketball Lettermen	70-71
Board of Education	11
Boys' League	17
Bus Drivers	90

C	
Calendar of Events	94
Cheerleaders	72
Chorus	62
Chorus officers	61
Classes—	
Senior	20-31
Junior	32-40
Sophomore	41-49
Clubs—	
Alpha Theta	54
Band	57
Boosters	55
Cosmo Nu	60
Dramatics	56
F. F. A.	58
F. H. A.	60
Sophomore Pep	59
Cooks	90

D	
Dances—	
April Fool's	81
Harvest Ball	77
Homecoming	76
Junior Prom	79
Spring Hop	80
Sweetheart Ball	78
Traffic Dance	82
Dedication	10
Debate	89
Division Pages	8-9, 18-19, 50-51

E	
Executive Council	Page 15

F	
Faculty	12-13
Football Action Shots	66-67, 73
Football Team	64-65
Football Lettermen	66-67

G	
Girls' League	17

H	
Honor Students	88

I	
Index	95

J	
Janitors	90

N	
Norcachian Staff	53
North Cache High School	4- 7

O	
Operetta	84

P	
Plant Medal	72
Play	85
Polaris Staff	52

R	
Region Jamboree	82

S	
School Life	91-93
School Song	2
Student Body Officers	14
Student Council	16
Student Court	15

T	
Tennis	89
Theme	3
Title Page	1
Track	75

plan with

UTOGRAPHS

Dear Worth
I have enjoyed
your friendship
during the past
year and I hope
you success and
happiness in your future
life. Always a Pal and Best
Friend H. J. Martin

Dear Worth,
I've enjoyed having
with you this year.
I have ability to
it. I hope to success
success, and happiness.
A friend forever
J. J. Martin

Dear Worth,
we have enjoyed
our friendship in
this year. Keep up the
good work. A Pal
J. J. Martin

Dear Worth
I've been well knowing
you this year. I hope to know
you better in the future.
Lots of love
a Physician and
Teacher Bright

Dear Worth
I hope you have enjoyed
the past year of school
as much as I have I wish
you success and happiness
a pal Howard.

Dear Worth,
School is going to soon
be out and I won't be able
to see you very often. Who
am I going to tell my troubles
and foolish ideas to? Maybe
I will come and see you when
I get a drivers license. I would
like to see you fly a plane.
Also I just like to see you act
disgusted, the way I make you
(ha, ha). Well, if there was
ever a finer kid born I have
never seen him yet. Here's wishing
you lots of everything nice as
you will sure need it in this
wide, wicked world. Be good.
A friend forever
Andy Robinson

Dear Worth
I can think you a swell guy even
if you do give me a bad time I hope
that we will always be pals.
Howard

Dear Worth (Luv)
I don't mean it.
If I see a good year
with you in the future.
M. J. Martin

AUTOGRAPHS

Dear Worth

By gosh worth I to really began
pleasure to know you and how you
got a friend & I've really enjoyed
having chem. & physics with you
Here's lots of luck to a great
kid.

A. P. G. Fay
Le Grand
Hudson

Dear Worth,
May this old world treat
you in the good way which
you deserve. Success and
happiness to you in all
things. A pal
Janie
Christensen

Dear Worth,

We was lucky
to get through this chemistry
year without blowing up the
lab. I hope you keep on having
that good of luck.

Floyd V. Hubert

Dear Worth

I have known you know for 10 short
years and I have found you to be a
man I can always trust and depend on.
I will always consider you
a very close friend and
hope you will be the
same of me. I
copy that collection
you know go out in
you may know all the
news in the world.
A pal always
M. L. M.

Dear Worth
I hope is a
good friend
hope you
get along in
life alright
a pal
John

Dear Worth
I have enjoyed your
friendship and you company
which can in the best.
A M. C. Fay
de Val (Barnum)

Dear Worth,

AUTOGRAPHS

Dear Warth
No matter what you do after your get through
with school I sure you will be a success.
with Luck.
Orland.

Dear Warth - I'm sure has been nice
knowing you these past 3 or 4 years.
You are one swell
guy, and quite a
master mind. I
know that you will wish you success and happiness.
Good - Luck - A N.C. Pat
from Cora

Shirley Lane

Dear Warth
I have really enjoyed
knowing you since we
first started to school.
I hope our friendship
may continue.
Best wishes.
a Pat Keith

Dear Warth
We finally made it
through school. I want to
wish you success in all
you do as you will leave
it. Good Luck
A N.C. Pat
Mona Davis
Speechman

Dear Warth
I have enjoyed your
friendship throughout our
school years & I hope
it may continue.
Here's wishing a nice bid
Luck & Success
A friend
Shirley Hunsley

Dear Warth
I have enjoyed your
friendship throughout our
school years & I hope
it may continue.
Here's wishing a nice bid
Luck & Success
A friend
Shirley Hunsley

AUTOGRAPHS

Dear Worth
 Thank for helping me in
 shop. You a swell kid
 and I hope to see you
 after school is out.

Lot of Luck
 and success
 especially with your
 airplanes a pal
 Spencer
 Preece

Dear worth
 Lots of luck and success.
 A N.C. Pal
 Clair Weeks

To Hell with the bottom
 to Hell with the top
 if there was not no bottom
 this would be no top

Gerald
 Bell

Dear Worth,

Dear North -

I'll I haven't hardly
seen you at all this
year but I remember
the times we had in
Park School. Be good
and best wishes.

Always
Marian Bullen.

AUTOGRAPHS

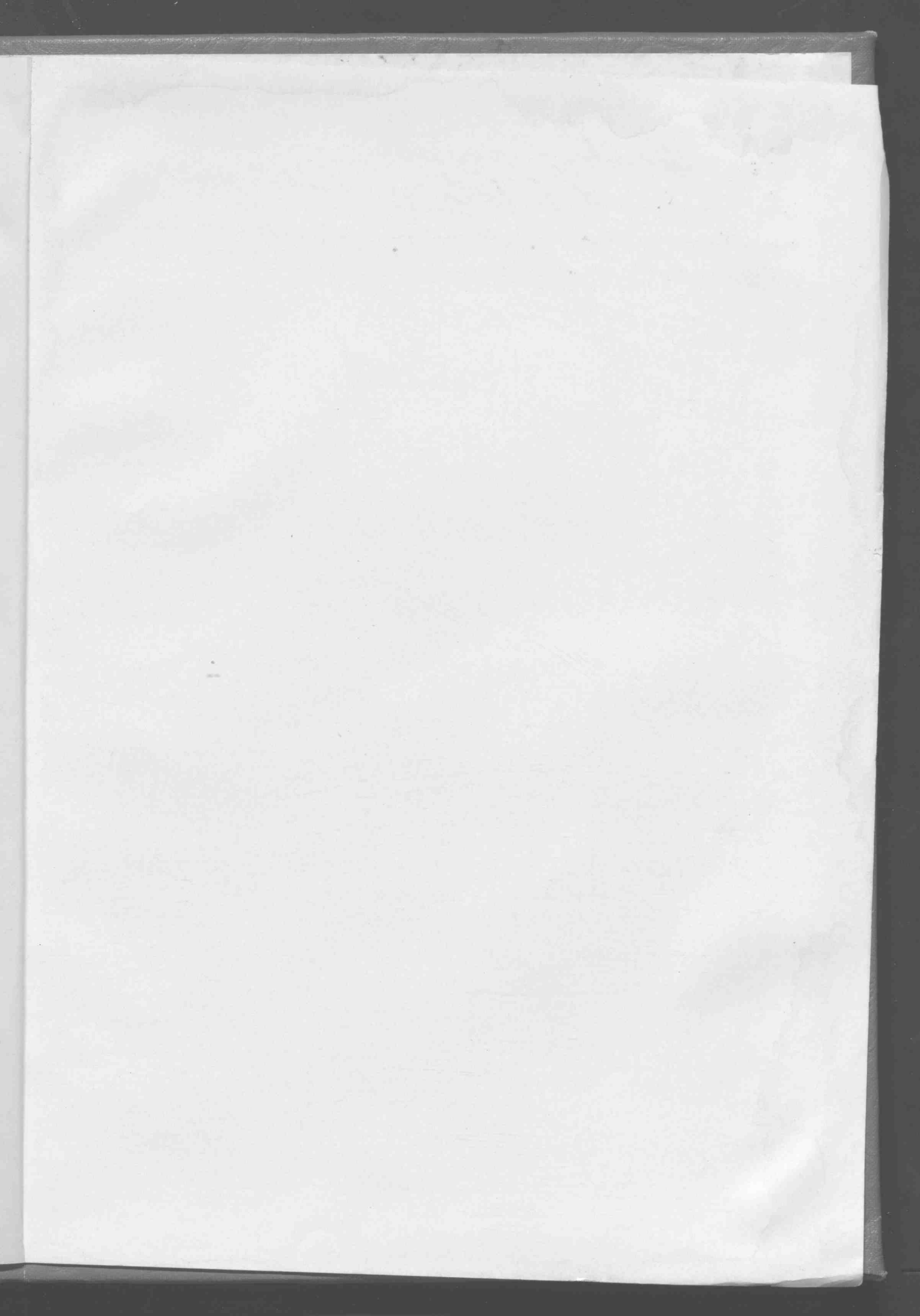
Dear North
I have
enjoyed your
friendship for
a long time
I hope it
may continue
I may think

AUTOGRAPHS

Dear Mr. Smith

AUTOGRAPHS

AUTOGRAPHS



Dear Worthy
As a friend of N.C. I wish you
success and happiness. Keep up
your good work as always

N.C. Po/
May Corley



Dear Worth
 I am really
 enjoyed your friendship
 for the past two years.
 I hope it will always
 continue. And don't be to
 mean this summer.
 A friend
 Winnie Hyatt

Dear Worth
 I have enjoyed
 your friendship. remember
 our days in English.
 success and happiness.
 A.N.C. Year
 Ellis Shuffin

