

Wharton Public Schools

2025-2026 Budget Presentation

April 24, 2025

MARIE V DUFFY
ELEMENTARY SCHOOL

MACKINNON MIDDLE
SCHOOL



Wharton Public Schools Board of Education Members

Mrs. Robin Ghebreal, President

Ms. Kelly Elardo, Vice-President

Mr. Anthony Astrologo

Mrs. Satwant Banga

Mr. Alexander Berniz

Ms. Jennifer Hobbs

Mrs. Pamela Schiele

2025-2026 Budget Considerations

- Students
- District Goals
- Local Revenue
- State Aid Funding
- State and Federal Grants
- Enrollments
- Accomplishments
- Program and Staff Implications
- Savings Through Shared Services
- Tax Implications



District Goals

- 1. By the end of 2025 all students will demonstrate a combined 45% growth in Math and a combined 45% growth in ELA as measured by the district's benchmark assessment.**
- 2. To create ways to increase the development opportunities for all staff (and students) in social-emotional needs and instructional practices.**
- 3. Wharton Borough Schools are a learning community where students, staff, and families are supported and connected, every student feels valued and values their education, and sees hope and meaning in their future.**

2025-2026

BUDGET HIGHLIGHTS

*2% Increase on Tax Levy \$205,377

*State Aid increased in the amount \$255,324

*School Choice and Special Education Aid increased
Equalization, Transportation and Security Aid were reduced overall
by \$125,048*

*The Preschool Education Aid grant is \$1,093,599 an increase of
\$37,713

*The total General Fund base budget for 2025-2026 is \$22,256,206.
This includes \$46,856 tuition for Unity Charter School and
\$2,449,163 for Capital Projects.

*The budget includes health care costs reflecting a +9.5% increase

Total State Aid

- 2021-22 Actual \$ 5,989,570*
- 2022-23 Actual \$ 6,127,560*
- 2023-24 Actual \$ 7,793,683*
- 2024-25 Actual \$ 9,336,998*
- 2025-26 Actual \$ 9,592,322*

*Does not include Preschool Funding

Local Revenue

- **Local Tax Levy – Increase of 2%**
- **E-rate Reimbursements**
- **Semi Funds**
- **Miscellaneous Revenue**

Shared Services

- Member of ACES for electricity & gas savings
- E-rate Services
- Member of Purchasing Cooperatives with Educational Data Services, Hunterdon County Educational Services Commission and ESCNJ
- Agreement with Wharton Police Department for Class III Officer
- Member of School Alliance Insurance(SAIF) and NJ School Insurance Group(NJSIG)
- Child Study Team and Custodians with Morris Hills Regional School District
- Athletic and Field Trip Transportation with Morris Hills, Rockaway Township, Roxbury and Denville School Districts
- Snow removal of parking lot and trash removal with Wharton Public Works
- Purchases of copy paper and custodial supplies with Morris Hills Regional School District
- Town utilizes schools for recreation and meetings

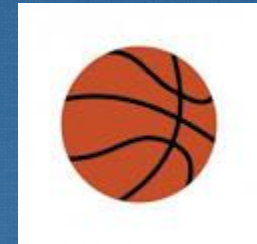
Wharton Provides Comprehensive Athletic and Extra-Curricular Programs

BASEBALL



SOFTBALL

BASKETBALL – BOYS/GIRLS



CROSS COUNTRY - BOYS/GIRLS

SOCCER – BOYS/GIRLS

WRESTLING



ART CLUB



TECHNOLOGY CLUB

Wharton Provides Comprehensive Athletic and Extra-Curricular Programs

SOS/HOMEWORK CLUB

YEARBOOK CLUB



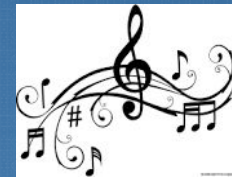
PERFORMING ARTS

BAND

ROSETTA STONE

TREP\$

FAMILY NIGHTS



Maintained Positions

Duffy Elementary Everyday Substitute (2)

MacKinnon Middle School Everyday Substitute (2)

Duffy Elementary ESL Teacher

MacKinnon Middle School ESL Teacher

Duffy Elementary RTI Teacher

MacKinnon Middle School RTI Teacher

MacKinnon Middle School Reading Specialist

MacKinnon Middle School Parent Liaison

Duffy/MacKinnon Coordinator of Student
Services/Attendance and Welfare

Mental Health Clinicians (2)

2nd FT Nurse

Behavioral Coaches

DISTRICT CAPITAL PROJECTS

2024-2025

- *Concrete Dumpster Pad**
- *Bathroom Upgrades Phase II**
- *Resurface Outside Basketball Court
w/Hoops**
- *Ceiling Tile/Grid/Light Replacement-Duffy**
- *Walk-In Freezer Upgrade**
- *WI-FI Access Points Upgrades**
- *Install Classroom Door Access Readers**
- *Phone System Upgrade**

Total \$1,272,092

DISTRICT CAPITAL PROJECTS 2025-2026

- *Elementary Window Replacement**
 - *Gym Floor Replacement**
 - *Elementary New Cubbies Casework**
 - *New Epoxy Floor**
 - *Ceiling Tile/Grid/Lights**
 - *MD Class Washer/Dryer Room**
 - *Shade Structure Outdoor Classroom**
- Total \$2,449,163**

2025-2026 ENROLLMENT

Grade	Students	Sections	Class Size
PRIDE	9	1	9
K	54	3	18
1	71	4	18
2	74	4	19
3	88	4	22
4	77	4	19
5	73	4	18
6	73	4	18
7	95	4	24
8	102	5	20

TAX INCREASE ON AVERAGE HOME

Assessed Value	Annually	Quarterly	Monthly	Weekly
\$386,798	\$1.04	\$0.26	\$0.09	\$0.02



THANK YOU
FOR YOUR SUPPORT

