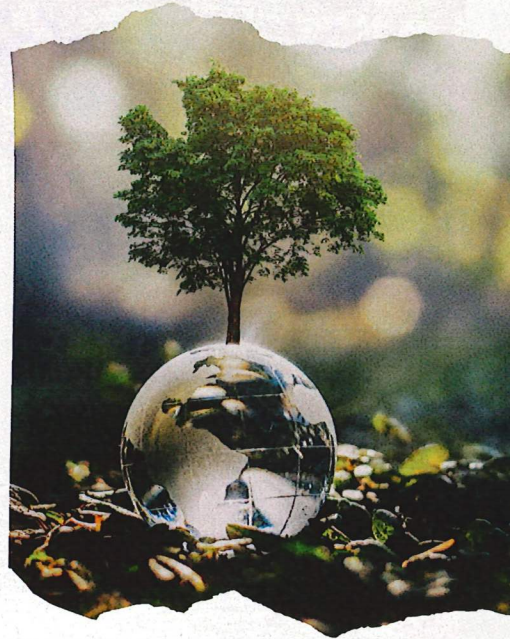


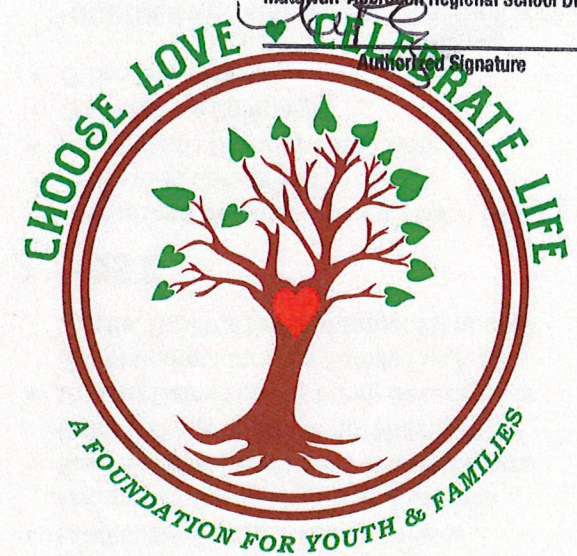
Hours of Operation

Wednesday to Saturday
2:00PM to 7:00PM

*This is **not a crisis hotline**.
Please direct emergency
calls to **911**.



APPROVED FOR DISTRIBUTION
Matawan-Aberdeen Regional School District



COMMUNITY CARE CONNECTION **A "WARM LINE"**

The Community Care Connection line serves as a bridge between donors and those in need, ensuring access to essential goods such as clothing, food, and household items.

By offering a compassionate and supportive referral service, the CCC line helps direct immediate support, empower and promote community well-being, and foster a spirit of generosity and mutual aid.

Contact CLCL Foundation

TEL: 848-227-1205
P.O. BOX 601 TOMS RIVER, NJ 08754
[HTTPS://CLCLFOUNDATION.ORG](https://clclfoundation.org)

Contact CCC Line

732-800-1222

CCCLine@CLCLFoundation.org

CLCL Foundation is a registered
501(c)(3) charitable organization
TAX ID: 99-0461801
NJ Registration: CH4678300

COMMUNITY CARE CONNECTION **732-800-1222**

Turning Helplessness
into **POWER** by
fostering community
and enhancing family
wellbeing.



SCOPE OF THE PILOT PROGRAM

The Community Care Connection (CCC) line is a pilot program that operates within Ocean and Monmouth Counties, NJ.

Service Population

Individuals and families in need of essential donated items throughout Ocean and Monmouth County, NJ.



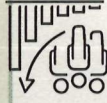
Phase One

Focuses on establishing a robust referral network, training staff, and developing partnerships with local donation sites.



Pilot Goals

Create a well established, efficient system that can be scaled to serve a broader population, reducing poverty-related challenges, improving community well-being.



Innovative Solutions

Implement a comprehensive outreach strategy to raise awareness about the CCC line and enhance service reach.



- Distributing informational materials
- Hosting community events
- Leveraging social media platforms to reach wider audience
- Collecting data to ensure continual improvement
- Training well equipped operators to handle calls and provide accurate referrals
- Collaborating with local government agencies, nonprofits, religious-affiliated, non-denominational, for-profit, and any other community resources

CCC Line Services

This unique, community-driven service empowers residents to refer their

neighbors, friends, and family members for essential donations. Donation

referral sites offer a range of resources, including: food pantry, soup kitchen, clothing, diapers, baby and child items,

household items, medical care, pet food, utilities, furniture and more.

By enhancing connections between families or individuals in need and

available resources, the program aims to:

REDUCE

- Food Insecurity
- Poverty-Related Child Maltreatment Reports
- Parental Stress
- Youth and Family Crises

PROMOTE

- Donation Replenishment Cycle
- Community Connection: Refer When YOU, Youth, Family, or Individual Need Civic Engagement
- Self-Advocacy
- Events and Awareness Campaigns
- Access to Vital Resources

35% OF ALL

NEGLECT-BASED
MALTREATMENT
ALLEGATIONS ARE
POVERTY-BASED.

Get Involved!

JOIN OUR MISSION

- Board of Directors
- Advisory Council
- Community Stakeholders Council
- Junior Leadership Council (10-19)
- Volunteer
- Become a Phone Operator!

SUPPORT OUR MISSION

1. GIVE

- Financial Contribution; tax-deductible
- In-kind Services such as Finance or Accounting Services, Human Resource Services, Marketing and Communications, Grant Writing, Social Media Management
- In-kind Items such as Food, Beverages or Entertainment for Free Family Fun Night Events, Baskets for September Fundraiser

2. HOST

- Customized Donation Drive for Local Sites
 - Awareness Campaigns
 - Social Media Birthday Fundraiser
 - Go-Fund-Me Campaign
 - Other Fundraisers
- TOGETHER we foster community and enhance individual, youth and family wellbeing.