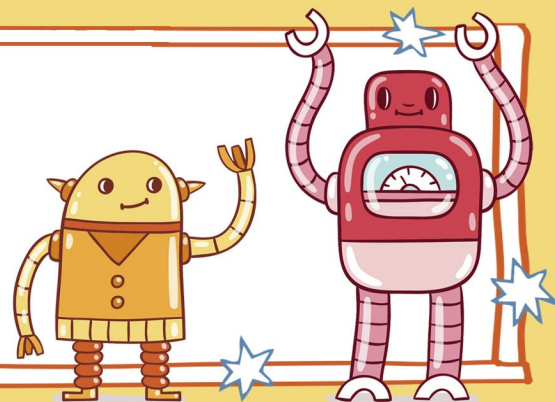


# BCTEA MENU

## MAY 2025



**BREAKFAST:** Student \$2.25 • Adult: a la carte    **LUNCH:** Student \$3.65 • Reduced \$0.40 • Adult: \$5.25

**BREAKFAST:** Toast or PopTart & Cereal offered daily. Includes choice of milk.    **LUNCH:** Includes entrée, vegetable, fruit & choice of milk.

<p><b>28 BREAKFAST</b> Cinnamon Roll &amp; String Cheese <b>OR</b> PopTart &amp; Cereal Craisins Fruit Juice</p> <p><b>LUNCH</b> Beef/Cheese Nachos <b>OR</b> Hot/Spicy Chicken Sandwich <b>OR</b> Strawberry Yogurt Parfait w/ Muffin Refried Beans French Fries Fresh Vegetable of the Day Fruit Cup Fruit Juice</p>	<p><b>29 BREAKFAST</b> Mini jWaffles <b>OR</b> Toast &amp; Cereal Raisels, Fruit Juice</p> <p><b>LUNCH</b> Hamburger/Cheeseburger <b>OR</b> Manager's Special w/ Bread of the Day <b>OR</b> Fruit &amp; Cheese Plate w/ Muffin <b>OR</b> Crispy Chicken Salad w/ Flatbread French Fries California Blend Fresh Vegetable of the Day Fruit Cup Fruit Juice</p>	<p><b>30 BREAKFAST</b> Chocolate Filled Crescent <b>OR</b> Toast &amp; Cereal Craisins, Fruit Juice</p> <p><b>LUNCH</b> Chicken Tenders <b>OR</b> Chicken Fried Steak Wheat Roll <b>OR</b> Italian Sub Sandwich <b>OR</b> Blueberry Yogurt Parfait w/ Muffin Mashed Potatoes w/ Cream Gravy Green Beans Fresh Vegetable of the Day Fruit Cup Fruit Juice</p>	<p><b>1 BREAKFAST</b> Manager's Special <b>OR</b> Toast &amp; Cereal Raisels, Fruit Juice</p> <p><b>LUNCH</b> Beef Lasagna w/ Wheat Roll <b>OR</b> Crispy Chicken Sandwich <b>OR</b> Grilled Cheese Sandwich <b>OR</b> *Turkey Club Wrap Bahama Blend French Fries Fresh Vegetable of the Day Fruit Cup Fruit Juice</p>	<p><b>2 BREAKFAST</b> Pancakes &amp; Scrambled Eggs <b>OR</b> PopTart &amp; Cereal Raisels, Fruit Juice</p> <p><b>School Lunch Hero Day LUNCH</b> Pepperoni Pizza/Cheese Pizza <b>OR</b> BBQ Beef Sandwich <b>OR</b> Crispy Chicken Caesar Wrap Whole Kernel Corn Tater Tots Fresh Vegetable of the Day Fruit Cup Fruit Juice <i>Lunch Hero Slush</i></p>
<p><b>5 BREAKFAST</b> Breakfast Pizza <b>OR</b> PopTart &amp; Cereal Craisins Fruit Juice</p> <p><b>LUNCH</b> Teriyaki Beef w/ Seasoned Rice &amp; Wheat Roll <b>OR</b> Hot/Spicy Chicken Sandwich <b>OR</b> Blueberry Yogurt Parfait w/ Muffin Steamed Broccoli French Fries Fresh Vegetable of the Day Fruit Cup Fruit Juice</p>	<p><b>6 BREAKFAST</b> Manager's Special <b>OR</b> Toast &amp; Cereal Raisels, Fruit Juice</p> <p><b>LUNCH</b> Hamburger/Cheeseburger <b>OR</b> Macaroni &amp; Cheese w/ Fish Nuggets and Hushpuppies <b>OR</b> Buffalo Chicken Salad w/ Flatbread <b>OR</b> Ham/Cheese Sub Bahama Blend French Fries Fresh Vegetable of the Day Fruit Cup, Fruit Juice</p>	<p><b>7 BREAKFAST</b> Mini Pancakes <b>OR</b> Toast &amp; Cereal Craisins, Fruit Juice</p> <p><b>LUNCH</b> Chicken Nuggets <b>OR</b> Steak Fingers Wheat Roll <b>OR</b> Strawberry Yogurt Parfait w/ Muffin <b>OR</b> Cold Cut Sub Sandwich Mashed Potatoes w/ Cream Gravy Ranch Beans Fresh Vegetable of the Day Fruit Cup Fruit Juice</p>	<p><b>8 BREAKFAST</b> Chicken Biscuit Sandwich <b>OR</b> PopTart &amp; Cereal Raisels, Fruit Juice</p> <p><b>LUNCH</b> Spaghetti w/ Meat Sauce &amp; Roll <b>OR</b> Manager's Special w/ Bread of the Day <b>OR</b> Mandarin Orange Yogurt Parfait w/ Muffin <b>OR</b> Crispy Chicken Wrap French Fries Green Beans Fresh Vegetable of the Day Fruit Cup Fruit Juice</p>	<p><b>9 BREAKFAST</b> English Muffin Sandwich w/ Egg Patty &amp; Cheese <b>OR</b> Toast &amp; Cereal Craisins, Fruit Juice</p> <p><b>LUNCH</b> Pepperoni Pizza/Cheese Pizza <b>OR</b> Chicken/Cheese Quesadilla <b>OR</b> Italian Sub Sandwich <b>OR</b> G2G Manager's Special Whole Kernel Corn French Fries Fresh Vegetable of the Day Fruit Cup, Fruit Juice</p>

\*Contains Pork    •    Fresh fruit offered daily    •    Menu Subject to change due to product availability



In accordance with federal civil rights law and U.S. Department of Agriculture (USDA) civil rights regulations and policies, this institution is prohibited from discriminating on the basis of race, color, national origin, sex (including gender identity and sexual orientation), disability, age, or reprisal or retaliation for prior civil rights activity. Program information may be made available in languages other than English. Persons with disabilities who require alternative means of communication to obtain program information (e.g., Braille, large print, audiotape, American Sign Language), should contact the responsible state or local agency that administers the program or USDA's TARGET Center at (202) 720-2600 (voice and TTY) or contact USDA through the Federal Relay Service at (800) 877-8339.

To file a program discrimination complaint, a Complainant should complete a Form AD-3027, USDA Program Discrimination Complaint Form which can be obtained online at: <https://www.usda.gov/sites/default/files/documents/USDA-OASCR%20P-Complaint-Form-0508-0002-508-11-28-17Fax2Mail.pdf>, from any USDA office, by calling (866) 632-9992, or by writing a letter addressed to USDA. The letter must contain the complainant's name, address, telephone number, and a written description of the alleged discriminatory action in sufficient detail to inform the Assistant Secretary for Civil Rights (ASCR) about the nature and date of an alleged civil rights violation. The completed AD-3027 form or letter must be submitted to USDA by: mail: U.S. Department of Agriculture Office of the Assistant Secretary for Civil Rights 1400 Independence Avenue, SW Washington, D.C. 20250-9410; or fax: (833) 256-1665 or (202) 690-7442; or email: [program.intake@usda.gov](mailto:program.intake@usda.gov). This institution is an equal opportunity provider.



**BREAKFAST:** Student \$2.25 • Adult: a la carte    **LUNCH:** Student \$3.65 • Reduced \$0.40 • Adult: \$5.25

**BREAKFAST:** Toast or PopTart & Cereal offered daily. Includes choice of milk.    **LUNCH:** Includes entrée, vegetable, fruit & choice of milk

<p><b>12 BREAKFAST</b> Mini Cinnis <b>OR</b> PopTart &amp; Cereal Craisins Fruit Juice</p> <p><b>LUNCH</b> Beef/Cheese Nachos <b>OR</b> Hot/Spicy Chicken Sandwich <b>OR</b> Strawberry Yogurt Parfait w/ Muffin Refried Beans French Fries Fresh Vegetable of the Day Fruit Cup Fruit Juice</p>	<p><b>13 BREAKFAST</b> *Sausage Rolls <b>OR</b> Toast &amp; Cereal Raisels Fruit Juice</p> <p><b>LUNCH</b> Hamburger/Cheeseburger <b>OR</b> State Fair Corn Dogs <b>OR</b> G2G Manager's Special Steamed Broccoli French Fries Fresh Vegetable of the Day Fruit Cup Fruit Juice</p>	<p><b>14 BREAKFAST</b> Manager's Special <b>OR</b> Toast &amp; Cereal Craisins, Fruit Juice</p> <p><b>LUNCH</b> Chicken Tenders <b>OR</b> Steak Fingers Wheat Roll <b>OR</b> G2G Manager's Special Mashed Potatoes w/ Cream Gravy Green Beans Fresh Vegetable of the Day Fruit Cup Fruit Juice</p>	<p><b>15 BREAKFAST</b> Bagel Filled w/ Cream Cheese <b>OR</b> PopTart &amp; Cereal Raisels, Fruit Juice</p> <p><b>LUNCH</b> Breaded Chicken Drumstick w/ Garlic Toast <b>OR</b> Breaded Mozzarella Cheese Sticks w/ Dip <b>OR</b> G2G Manager's Special French Fries Vegetable of the Day Fresh Veg. of the Day Fruit Cup Fruit Juice</p>	<p><b>16 BREAKFAST</b> Manager's Special <b>OR</b> PopTart &amp; Cereal Craisins, Fruit Juice</p> <p><b>LUNCH</b> Pepperoni Pizza/Cheese Pizza <b>OR</b> Manager's Special w/ Bread of the Day <b>OR</b> G2G Manager's Special Vegetable of the Day French Fries Fresh Vegetable of the Day Fruit Cup Fruit Juice</p>
<p><b>19 BREAKFAST</b> Manager's Special <b>OR</b> PopTart &amp; Cereal Craisins/Raisels Fruit Juice</p> <p><b>LUNCH</b> Fiestada Pizza Steamed Broccoli French Fries Fresh Vegetable of the Day Fruit of the Day Fruit Juice</p>	<p><b>20 BREAKFAST</b> Manager's Special <b>OR</b> PopTart &amp; Cereal Craisins/Raisels Fruit Juice</p> <p><b>LUNCH</b> Hamburger/Cheeseburger Baked Beans French Fries Fresh Vegetable of the Day Fruit of the Day Fruit Juice</p>	<p><b>21 BREAKFAST</b> Manager's Special <b>OR</b> PopTart &amp; Cereal Craisins/Raisels Fruit Juice</p> <p><b>LUNCH</b> Chicken Nuggets w/ Bread of the Day Mashed Potatoes w/ Cream Gravy Vegetable of the Day Fruit of the Day Fruit Juice</p>	<p><b>22 BREAKFAST</b> Manager's Special <b>OR</b> PopTart &amp; Cereal Craisins/Raisels Fruit Juice</p> <p><b>Early Release</b></p> <p><b>No Lunch</b></p>	

\*Contains Pork • Fresh fruit offered daily • Menu Subject to change due to product availability



In accordance with federal civil rights law and U.S. Department of Agriculture (USDA) civil rights regulations and policies, this institution is prohibited from discriminating on the basis of race, color, national origin, sex (including gender identity and sexual orientation), disability, age, or reprisal or retaliation for prior civil rights activity. Program information may be made available in languages other than English. Persons with disabilities who require alternative means of communication to obtain program information (e.g., Braille, large print, audiotape, American Sign Language), should contact the responsible state or local agency that administers the program or USDA's TARGET Center at (202) 720-2600 (voice and TTY) or contact USDA through the Federal Relay Service at (800) 877-8339.

To file a program discrimination complaint, a Complainant should complete a Form AD-3027, USDA Program Discrimination Complaint Form which can be obtained online at: <https://www.usda.gov/sites/default/files/documents/USDA-OASCR%20P-Complaint-Form-0508-0002-508-11-28-17Fax2Mail.pdf>, from any USDA office, by calling (866) 632-9992, or by writing a letter addressed to USDA. The letter must contain the complainant's name, address, telephone number, and a written description of the alleged discriminatory action in sufficient detail to inform the Assistant Secretary for Civil Rights (ASCR) about the nature and date of an alleged civil rights violation. The completed AD-3027 form or letter must be submitted to USDA by: mail: U.S. Department of Agriculture Office of the Assistant Secretary for Civil Rights 1400 Independence Avenue, SW Washington, D.C. 20250-9410; or fax: (833) 256-1665 or (202) 690-7442; or email: [program.intake@usda.gov](mailto:program.intake@usda.gov). This institution is an equal opportunity provider.