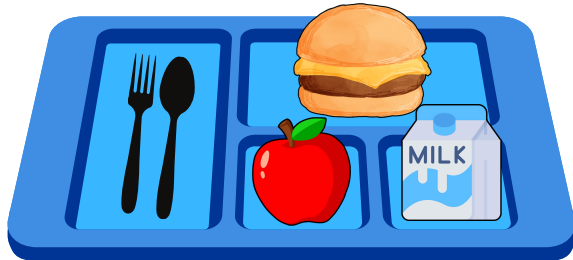
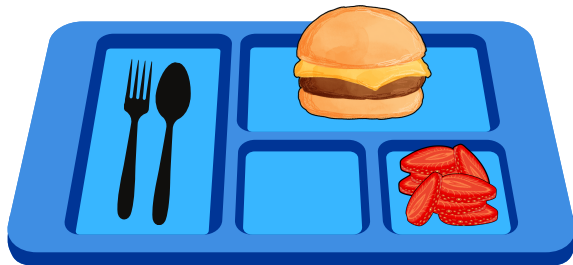


Is it a Reimbursable Lunch?

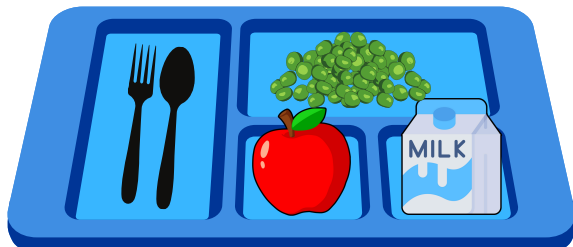
✓ YES



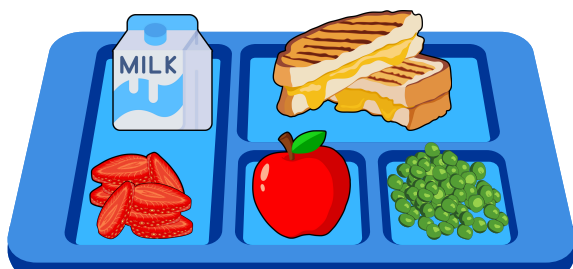
Grain (bun) + Meat + Fruit + Milk



Grain (bun) + Meat + Fruit

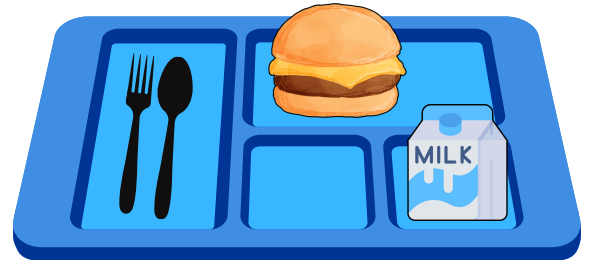


Vegetable + Fruit + Milk

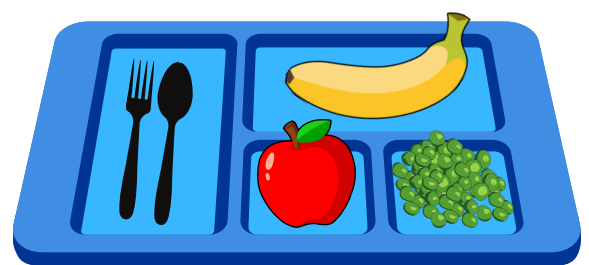


Grain + Meat Alternative (cheese)
+ Fruit + Fruit + Vegetable + Milk

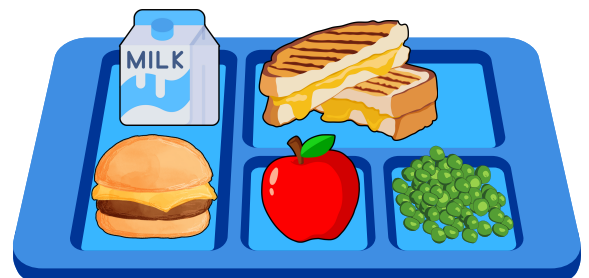
✗ NO



Must choose a fruit or vegetable



Must choose at least one more component
(other than a fruit or vegetable)



May only have one entrée



Must choose at least one more component
(other than a grain or vegetable)