

iFlagler SAC

February 26, 2025



Erin Quinn, Principal
Scott Bannon, Assistant Principal



Agenda

Welcome &
Introductions

Good Things

Review/Approval
Of January
Minutes

SIP Mid Year
Reflection

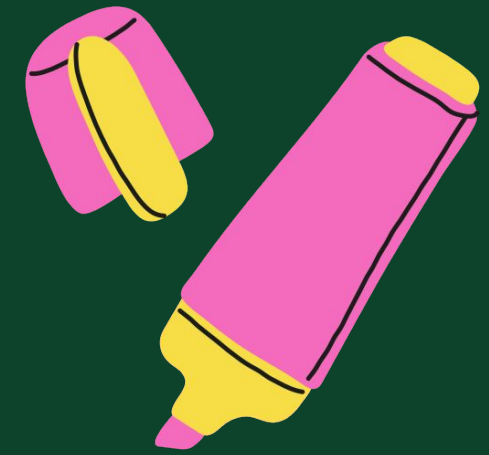
Coming Soon

Launch



Welcome & Introductions

Good Things



January Minutes

[January 15, 2025 - SAC
Meeting Minutes](#)

**Motion to
approve?**

SIP Mid Year Review

1

SWD

2

Student
Engagement

3

Interventions

SWD

Goal: Increase federal index from 45% to 50% PM1 to PM2 scores

- 2nd-5th $\frac{4}{5}$ students made gains in Reading and Math (includes iReady, Star, PM1 and PM2)
- 6th- 4/4 students made no gains
- 8th- 7 students; 1 student showed gains in ELA and Math; 1 student has declined from PM1 to PM2, 4 students have showed no gains in ELA and Math, and 1 student hasn't participated in any testing
- 9th-10th - 10 students; 4 students have made gains in ELA; 5 students have shown no gains for ELA - 1 student declined in ELA;

SWD



Barriers

Attendance to support sessions;
K-5 teachers not Flagler employees



Adjustments

Training in
Lexia Power Up;
Monthly PLCs



Work in Progress

New - ESE Support
Facilitator

Student Engagement

Goal: Attendance rates at state testing will improve to 95% on all FAST testing sessions. In addition, iFlagler will strive for 95% completion rate in all virtual courses.

Percentage tested for PM1 and PM2

K-80%
1-100%
2-100%
3-94%
4-97%
5-96%
6-83%
7-85%
8-78%
9-82%
10-82%

Testing Results:

PM1 ELA- 44% proficiency
PM2 ELA- 51% proficiency
PM1 Math- 9% proficiency
PM2 Math-19% proficiency

Student Engagement



Barriers

Organizing and managing Virtual PBIS program. Family hardships/challenges to provide transportation to testing.



Adjustments

Revised Student/Family Handbook; PBIS; CKH



Work in Progress

“Who’s Trending”
Personal Phone Calls to families

Interventions

On the 24-25 End of Year Math, ELA, and Science assessments, each grade level will increase the percentage of students scoring a level 3 or higher, with the ultimate goal of reaching 50% proficiency in grades K-5.

- 1st year to offer intervention support to grades K-5
- 29 students who have been placed in MTSS - tiered support for ELA and or Math. Only 1 family declined the extra support.

Interventions



Barriers

Interventionist hired
November 2024;
collaboration with teachers
out of district



Adjustments

Revise Student/Family
Handbook; Monitoring
lesson plans &
attendance

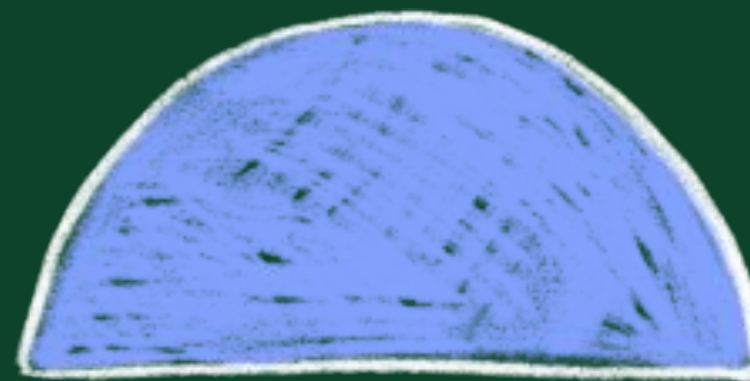
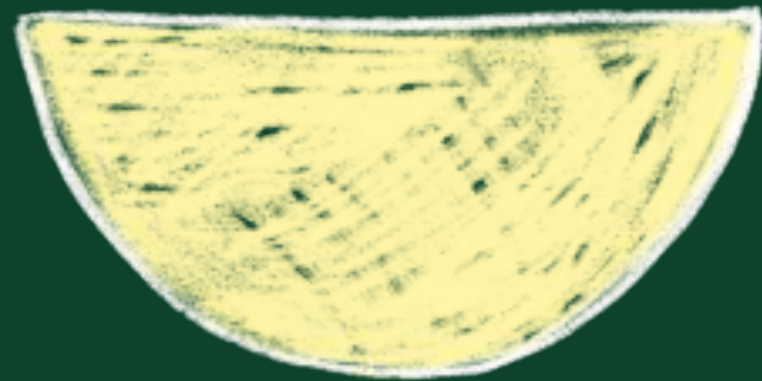


Work in Progress

Need for full-time
interventionist K-12

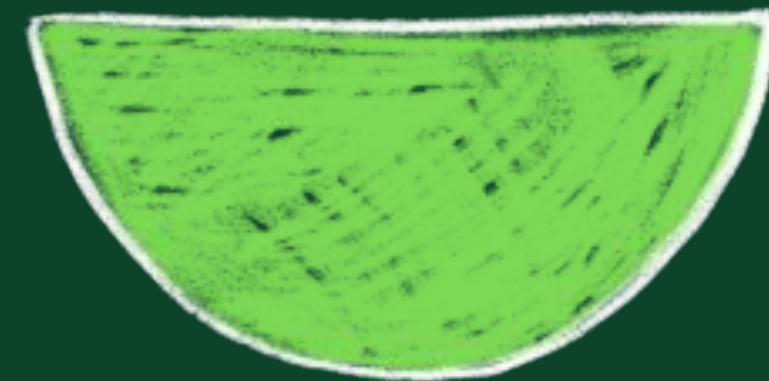
Coming Soon

PM3 & EOC
Testing Prep



Testing Scoop
Ice Cream
Social

Fortress
Fridays

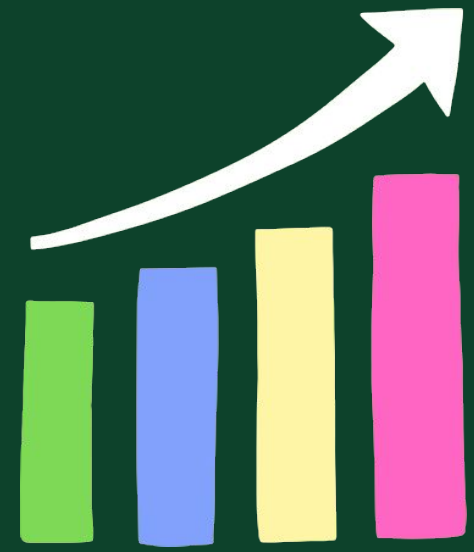


Questions/
Concerns ??

Launch

A School Improvement Plan is more than just a roadmap—it's a commitment to creating a brighter future for every student. Each goal we set is an attempt to help our students grow. Together, we have the power to transform challenges into opportunities and turn every virtual classroom into a space where curiosity, creativity, and achievement can flourish. The work we do today will shape the leaders of tomorrow.





Thank
You!

