

School Feature

# WILLIAM ANDERSON

Elementary School

***Presented by***

Kevin Corrinet, Principal

Sara Diaz, Assistant Principal







School Feature

# **WILLIAM ANDERSON**

Elementary School

## ***Co-Presented by***

Rebecca Kim, Journeys SLP

Carlin Ritter, Journeys Teacher

Marilyn Gil, ELIRT

Micaela Hjar Gonzales, Student

Judith Barrera, PTA President

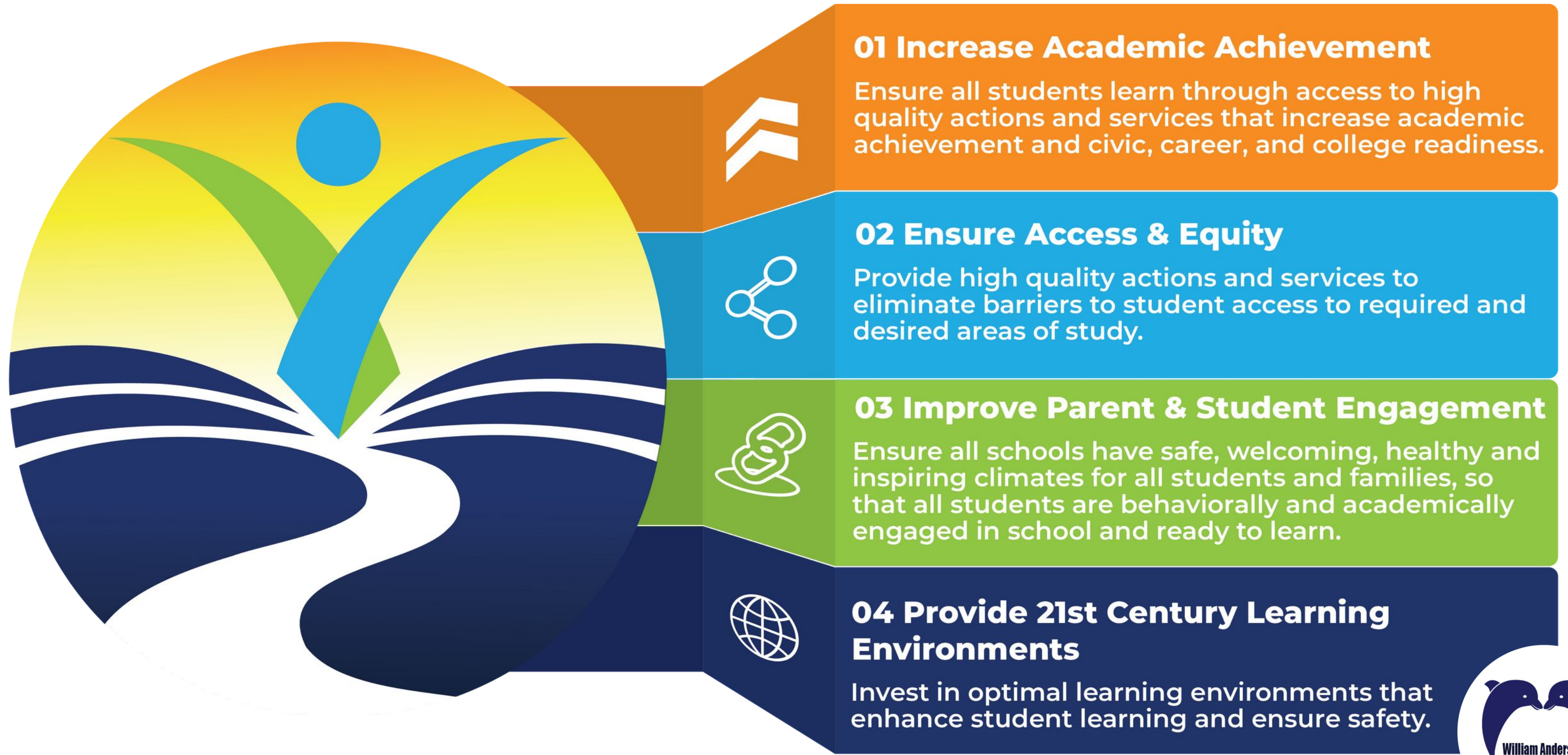
Vianna Recendez, SSW

Linda Park, 1st Grade Teacher





# District Goals

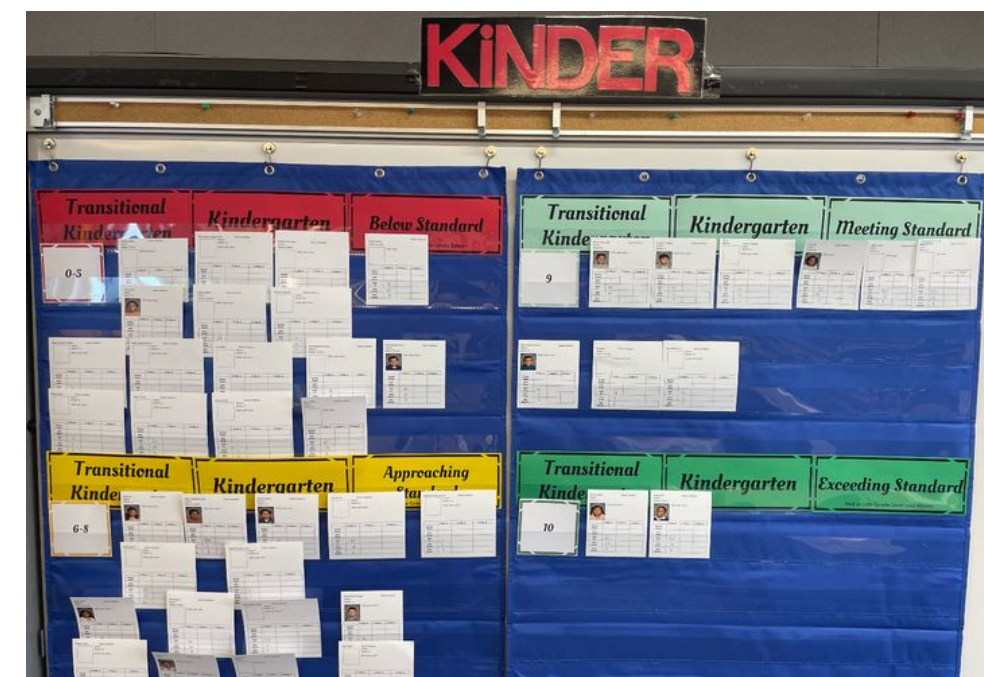




# District Goal 01: Increase Academic Achievement

## iReady

- Data-Driven Instruction / MTSS
- iReady Data & Support Days
- iReady Incentives & Recognitions
- SMART Goals (PLT + Site)

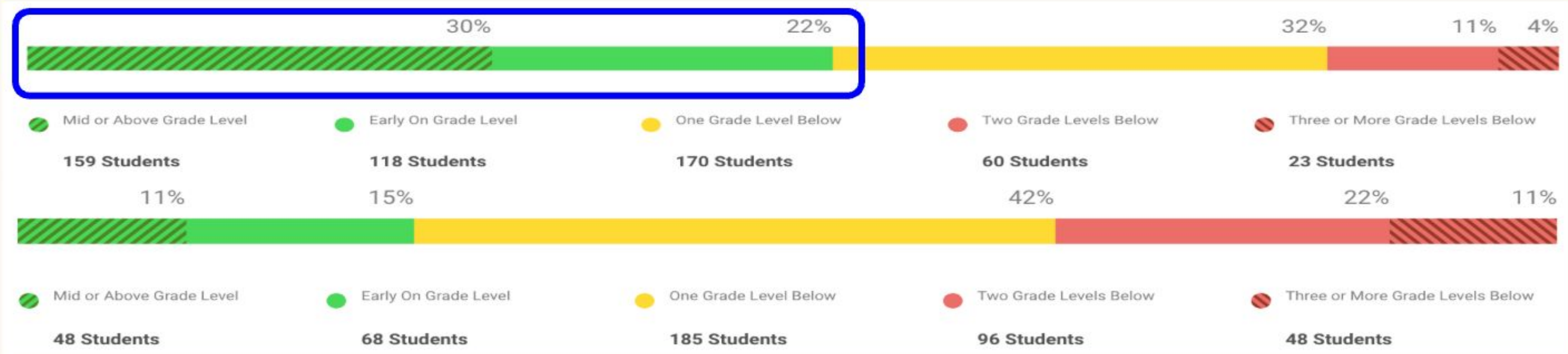




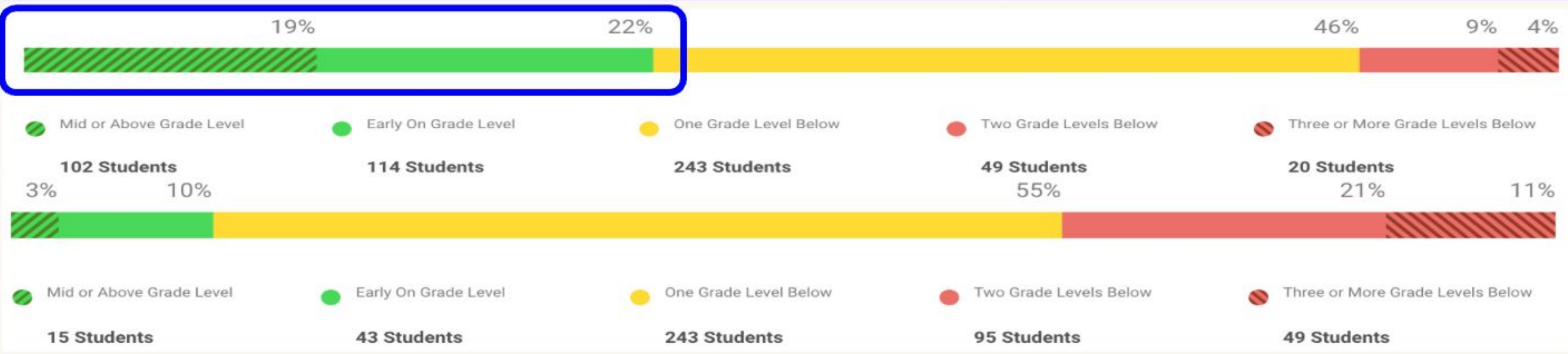
# District Goal 01: Increase Academic Achievement

## Anderson iReady School Data: 24-25

**Reading Goal Met! - 52% Proficiency (School Goal: 48%)**



**Math Goal Met! - 41% Proficiency (School Goal: 36%)**





## District Goal 02: Ensure Equity & Access

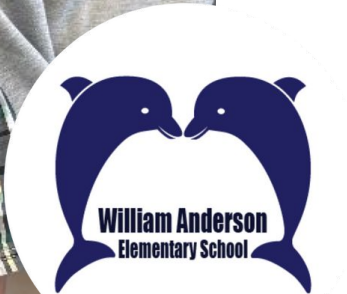
### Journeys SDC

- Who we serve / our 'why'
- Innovative Practices
- Inclusion Opportunities



## Supporting Our ELs

- Designated ELD
- Newcomer Academy
- ELPAC Club
- ELAC
- Reclassification Recognition





# District Goal 03: Improve Parent & Student Engagement

## Family Engagement + Parent/Guardian

- Family Nights
- **Participation**
- Volunteer Opportunities
- PTA Highlights



**JOIN US!**  
LESD HAS PARTNERED WITH TRAJECTORY OF HOPE

Family Affinity Spaces are here for the families of African American students on the East Side of LESD.  
**Anderson Elementary, Twain Elementary, and Rogers Middle School.**

These sessions aim to strengthen the home-school connection, build community across school campuses, and empower families to advocate for their children with the school space.

**Join Us:**  
April 10, 2025 @6pm  
**Location: Rogers Middle School**  
4110 W 154th St, Lawndale, CA 90260

Child Care and Dinner Provided  
Please RSVP using QR code









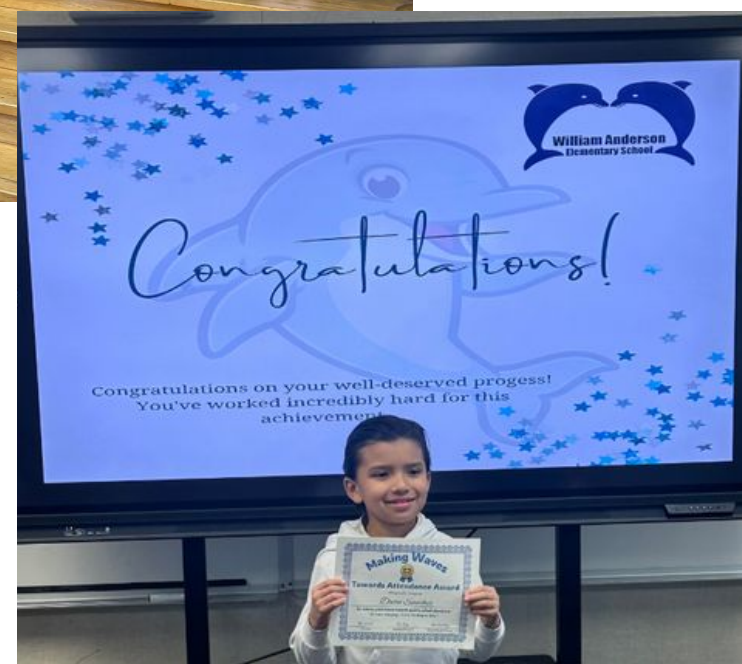
# District Goal 03: Improve Parent & Student Engagement

## Attendance

- Goals/Areas for Growth
- New Attendance Initiatives
- Incentives (School/Class)

## PBIS Initiatives

- Our new & expanded PBIS team!
- Splash Slips/Dolphin Cart
- Award Ceremonies
- 'Dolphin Way' T-Shirts





## District Goal 04: Provide 21st Century Learning Environments

### TREC / Makerspace

- Students are creating, collaborating, communicating, and thinking critically



### Field Trips

- California Science Center
- Columbia Memorial Space Center
- Dominguez Rancho Adobe Museum
- MB Roundhouse Aquarium
- West Basin Municipal Water





# School Highlights

## **WAE is a 2025 California Distinguished School!**

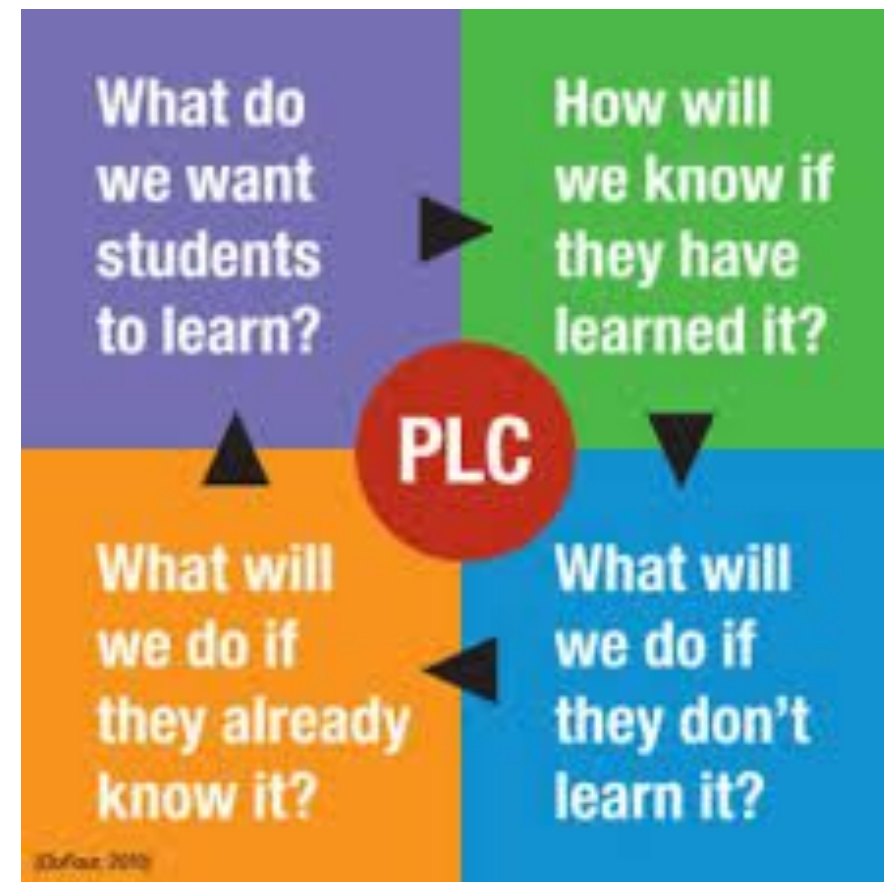
- 1 of 336 Elementary Schools in CA recognized
- Recognized for 'Closing the Achievement Gap' for having demonstrated exemplary growth for student groups that have experienced persistent achievement gaps and have also demonstrated strong overall outcomes for ALL students.





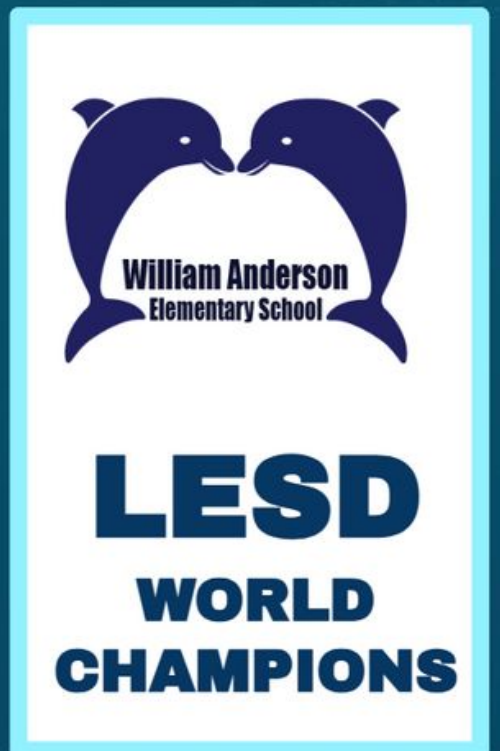
# Focus of 2024-2025

- School Culture
- MTSS with emphasis on Tier 1
- PLCs / Guiding Coalition Team!



*Annnnd now...the starting lineup for your world champion, WAE Guiding Coalition Team!*

- Kinder, Room 10: Cynthia Cornejo
- 1st Grade, Room 13: Linda Park
- 2nd Grade, Room 19: Pantea Yamtoubi
- 3rd Grade, Room 23: Carmen Chic
- 4th Grade, Room 26: Heather Theile
- 5th Grade, Room 27: Mayra Bermudez
- TOSA Team, Rooms 21/22:
  - Marilyn Gil, Lisa Reitingner, & Lindsay Wynott
- Principal/AP, Main Office:
  - Kevin Corrinet & Sara Diaz







# Thank You

Any questions?

[anderson.lawndalesd.net](http://anderson.lawndalesd.net)