

BID #B25-18

AUTO SHOP WASTEWATER IMPROVEMENTS

Due Date and Time: at

Enclosed:

Bid
Documents
and
Affidavit

Matanuska-Susitna Borough School District

Purchasing Department
690 Cope Industrial Way
Palmer, AK 99645

P: (907) 861-5120 || F: (907) 861-5184
bids@matsuk12.us
www.matsuk12.us/bids

TABLE OF CONTENTS

TABLE OF CONTENTS P. 1

ADVERTISEMENT FOR BID P. 2

REQUEST FOR BID AND INSTRUCTIONS TO BIDDERS P. 3

ATTACHMENT A: SCOPE OF SERVICESP. 11

ATTACHMENT B: SPECIAL CONDITIONSP. 12

ATTACHMENT C: BID FORM P. 14

APPENDIX 1: ADDENDUM ACKNOWLEDGEMENTP. 15

APPENDIX 2: NON-COLLUSION CERTIFICATE P. 16

APPENDIX 3: INSURANCE P. 17

APPENDIX 4: VENDOR PAPERWORKP. 19

APPENDIX 5: PROPOSED SUBCONTRACTORS AND SUPPLIERSP. 20

APPENDIX 6: PRE-BID CONFERENCE. P. 21

APPENDIX 7: SITE PLANS AND SPECIFICATIONS P. 22

APPENDIX 8: SCHOOL CALENDARS. P. 29

APPENDIX 9: DOL PAMPHLET 600. P. 33



ADVERTISEMENT

	DATE OF ADVERTISEMENT
Frontiersman	April 23 and 25, 2025
Anchorage Daily News	April 23 and 27, 2025

Type of Ad: Classified / Public Notice

The material herein must be printed in its entirety on the dates shown above. Affidavit of publication is required prior to payment.

Matanuska-Susitna Borough School District Bid

BID #B25-18

AUTO SHOP WASTEWATER IMPROVEMENTS

Notice is hereby given that the Matanuska-Susitna Borough School District (MSBSD) will consider bids from qualified individuals and firms for the provision of:

AUTO SHOP WASTEWATER IMPROVEMENTS

Bids are due on or before May 23, 2025 at 2:00 P.M. Palmer, Alaska time. Sealed bids must be submitted and received by the MSBSD Purchasing Department, 690 Cope Industrial Way, Palmer, AK 99645, on or before said date and time designated for receipt of bids. All bids must be marked " BID #B25-18 ."

Bid documents can be viewed on the MSBSD website at www.matsuk12.us/bids and are also available at the MSBSD Purchasing Department, 690 Cope Industrial Way, Palmer, AK 99645. For more information, call (907) 861-5120.

A pre-bid conference will be held on May 2, 2025. Attendance is not mandatory, but it is highly recommended that bidders attend. For more information, please refer to Appendix 6 of the bid documents. MSBSD personnel will be available. All questions will be answered in writing and issued as an addendum to the bid documents.

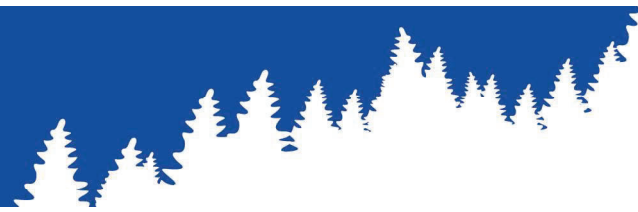
The MSBSD reserves the right to accept or reject any or all bids and waive any minor technicalities, informalities, and/or irregularities as it deems appropriate.

4/4/25	Requested By:	A. Carney	Approved By:	B. Munson
--------	---------------	-----------	--------------	-----------

AUTO SHOP WASTEWATER IMPROVEMENTS

BID #B25-18





AUTO SHOP WASTEWATER IMPROVEMENTS

BID #B25-18

INVITATION TO BID

THIS IS NOT A PURCHASE ORDER

The Matanuska-Susitna Borough School District (MSBSD) is requesting bids from qualified bidders to provide

AUTO SHOP WASTEWATER IMPROVEMENTS

as specific herein.

Bids will be accepted until at

Questions will be accepted until at

BIDDER USE ONLY

THIS PAGE MUST BE COMPLETELY FILLED IN, SIGNED, AND RETURNED WITH YOUR PACKET.

Company Name

Address

City State Zip

Telephone Number Fax Number

State of Alaska Business License Number Matanuska-Susitna Borough Business License Number

Authorized Signature Printed Name Date

AUTO SHOP WASTEWATER IMPROVEMENTS

BID #B25-18



INSTRUCTIONS TO BIDDERS

1. GENERAL INFORMATION:

The Matanuska-Susitna Borough School District (MSBSD) is soliciting bids from qualified bidders to provide the scope of services as specified in Attachment A, Scope of Services. Copies of the bid documents can be viewed in the Purchasing section of the MSBSD website at www.matsuk12.us/bids and can be obtained in the Purchasing Department at 690 Cope Industrial Way, Palmer, Alaska 99645 or by calling (907) 861-5120. Office hours are 7:00am - 4:30pm, Monday through Friday.

Bids must be fully executed, signed by each bidder, and enclosed in a sealed envelope with the bidder's name, address, and phone number clearly indicated on the outside, as per Section 8 of this Instructions to Bidders. Bids must be submitted to the MSBSD Purchasing Department at 690 Cope Industrial Way, Palmer, Alaska 99645. Signed bids must be in the office of the MSBSD Purchasing Department on or before the date and time designated for receipt of bids. **The MSBSD will not accept or consider bids that are oral, telephonic, telegraphic, faxed, e-mailed, or otherwise electronically transmitted.**

2. GENERAL STATEMENT:

In rendering the services hereunder, the selected bidder shall adhere to the following general terms and conditions. The term "selected bidder" refers to the bidder awarded a contract to provide services and/or products as required herein. The term "agreement" hereafter refers to this Invitation to Bid, any and all attachments and appendices, any and all addenda, and the bidder's response and acceptance by the MSBSD. A contract may be issued upon award of this bid.

3. PRE-BID CONFERENCE:

A pre-bid conference will be held on May 2, 2025. Attendance is not mandatory, but it is highly recommended that bidders attend. For more information, please refer to Appendix 6 of the bid documents. MSBSD personnel will be available. All questions will be answered in writing and issued as an addendum to the bid documents.

4. EXAMINATION OF BID DOCUMENTS:

A. Bidders shall carefully examine the bid documents before submitting a bid. The submission of a bid shall be an admission that the bidder has made such examination and is satisfied as to the conditions to be encountered in performing the work and as to the requirements and accuracy of the bid documents.

B. The MSBSD assumes no responsibility for any understanding or representations concerning conditions made by any of its officers, agents, or employees prior to the execution of the bid, unless such understanding or representations are expressly stated in the bid documents or addenda.

C. Bidders shall include in their bid sums sufficient to cover all items and services required by the bid documents, and shall rely entirely upon their own examination in making their bid. The submission of a bid shall be taken as prima facie evidence of compliance with this paragraph.

5. INTERPRETATION OR CORRECTION OF BID DOCUMENTS:

Bidders shall notify the Purchasing Department promptly of any error, omission, or inconsistency that may be discovered during examination of the bid documents. Requests from bidders for interpretation or clarification of the bid documents shall be made in writing to the Purchasing Department by

May 8, 2025 at 4:00 P.M. Palmer, Alaska time.

Any questions received after this date and time will not be answered. Questions should reference the applicable bid number and title and can be submitted by mail, fax, or e-mail to the following:

Mail: MSBSD Purchasing Department; 690 Cope Industrial Way; Palmer, AK 99645
Fax: MSBSD Purchasing Department; (907) 861-5184
E-mail: bids@matsuk12.us

AUTO SHOP WASTEWATER IMPROVEMENTS

BID #B25-18



5. INTERPRETATION OR CORRECTION OF BID DOCUMENTS (CONT.):

Interpretations, corrections, responses to questions, and changes of the Bid Documents will be made by addenda. Interpretations, corrections, responses to questions, and changes of the Bid Documents made in any other manner will not be binding on the MSBSD and bidders shall not rely on them. All addenda issued shall become part of the agreement documents. It is the bidder's sole responsibility to ascertain that they have received all addenda issued by the Purchasing Department. Each addendum will be issued by both fax machine and U.S. mail. All addenda will also be posted in the Purchasing section of the MSBSD website at www.matsuk12.us/bids. **All addenda must be acknowledged in the space provided on Appendix 1 or the bid may be deemed non-responsive.**

6. PREPARATION AND SUBMISSION OF BIDS:

A. Each bid must be signed in longhand by the bidder with their usual signature. Bids submitted by partnerships must be signed with the partnership name by one of the partners, followed by the signature and designation of the partner signing. Bids submitted by corporations must be signed with the legal name of the corporation, followed by the name of the state of incorporation, and the signature of the president, secretary, or other person authorized to bind in the matter. The full name and address of each person signing shall be typed or printed below the signature.

B. Bids shall be submitted on the forms furnished and must be manually signed. Bids must be submitted in a sealed envelope and addressed as indicated in Section 8 of this Instructions to Bidders.

C. Bids shall specify a price, typed or written in ink, for each bid item called for. Bids may be rejected if they show an omissions, alteration of the forms, additions not called for, conditional or alternate bids not called for, qualified bids, or irregularities of any kind.

D. Bidders shall bear all costs directly or indirectly related to preparing a bid, preparing presentations or supplements, and/or clarifying a bid as may be required by the MSBSD in response to this solicitation.

7. SUBMITTAL REQUIREMENTS:

All of the following must be included with the bid or the bid may be considered non-responsive and be rejected:

A. Invitation to Bid signature page, signed by responsible party.

B. Bid Form, fully executed and signed.

C. Appendix 1, Addendum Acknowledgement, fully executed and signed.

D. Appendix 2, Non-Collusion Certificate, fully executed and signed.

E. Evidence of Insurance, as required in the Invitation to Bid and Appendix 3, will be required prior to an award to the successful bidder.

F. Appendix 4, Vendor Paperwork, fully executed.

G. Appendix 5, Proposed Subcontractors and Suppliers List, fully executed (if applicable)

H. Copies of Alaska Business License and all other licenses, certificates, or permits required by city, borough, state, and federal law as applicable.

I. Any additional submittal requirements per Attachment A: Scope of Services.

8. BIDS:

A. Signed bids **MUST** be in the MSBSD Purchasing Department office on or before

at Palmer, Alaska time.

B. It is the responsibility of all bidders to ensure that their bids and associated documents are in the office of the Purchasing Department prior to the date and time designated for receipt of bids. Bids **MUST** be in **SEALED** envelopes clearly marked as follows:

Bid Number:

Bid Title:

Due: at



8. BIDS (CONT.):

C. Bidders are cautioned that mailed bids which arrive after the date time designated for receipt of bids will not be opened or considered. Bidders are further cautioned not to rely on the U.S. Postal System or any other second party for timely delivery of their bid. It is the bidder's sole responsibility to ensure that their bid and associated documents are in the physical possession of the Purchasing Department prior to the date and time scheduled for receipt of bids.

D. All bids shall be submitted on the attached bid forms in the spaces indicated and must comply with these instructions. The bid must be completed and signed by an authorized representative of the firm submitting the bid.

E. Scheduled bid openings are open to the public and are located in the Purchasing Department.

9. WITHDRAWAL FROM CONSIDERATION:

Bids may be withdrawn upon written request delivered to the MSBSD Purchasing Department on or before the date and time designated for receipt of bids. However, no bidder shall withdraw or cancel their bid for a period of ninety (90) calendar days prior to the date and time designated for receipt of bids, nor shall the selected bidder withdraw, cancel or modify their bid after having been notified by the Purchasing Department that said bid has been accepted by the MSBSD.

10. MODIFICATION OF BIDS:

Prior to the date and time designated for receipt of bids, a bid may be modified or withdrawn by notice to the MSBSD at the place designated for receipt of bids. Such notice shall be in writing over the signature of the bidder. That notice shall be date and time stamped by the MSBSD on or before the date and time designated for receipt of bids. A modification must not reveal the amount of the original bid. A bid bond, if required, shall be in an amount sufficient for the bid as modified.

11. AWARD OF CONTRACT:

A. The MSBSD will award a contract to the lowest responsive and responsible bidder. This bid will be awarded on the basis defined in Attachment A, Scope of Services.

B. The MSBSD, as it deems appropriate, shall have the right to reject any and all bids. Bids may be rejected if they do not include a required bid bond or other data required by the bid documents. All responsive bids may be rejected if the MSBSD, in its sole judgment, considers them too costly.

C. The MSBSD has the right to accept Alternatives in any order or combination unless otherwise specifically provided in the Bid Documents, and to determine the low bidder on the basis of the sum of the Base Bid and Alternatives accepted.

D. In determining the lowest responsive and responsible bidder, the MSBSD may consider, in addition to price, at any point in the selection process, any of the following factors:

- I. The ability, capacity, and skill of the bidder to perform the contract.
- II. Whether the bidder can perform the contract within the time specified without delay or interference.
- III. The character, integrity, judgment, experience, and efficiency of the bidder.
- IV. The quality of performance by the bidder on previous contracts of a similar nature.
- V. Whether the bidder is in arrears on any existing contract with the MSBSD or is in litigation, arbitration, or other legal dispute with the MSBSD.
- VI. Previous compliance by the bidder with laws and regulations relating to the contract.
- VII. The number and scope of conditions attached to the bid.
- VIII. The number and scope of minor variations contained in the bid.
- IX. If the contract is one which will require future maintenance or repairs, the availability of replacements, replacement parts, and maintenance service for any machinery, equipment, or other material proposed to be installed or supplied by the bidder.
- X. The quality, availability, and adaptability of the supplier, equipment, or contractual services to the particular use required.
- XI. Whether the bidder is prepared to furnish supplies, equipment, or contractual services which meet the specifications of the MSBSD.

E. The MSBSD reserves the right to make award within a ninety (90) calendar day award period from the date the bids are opened. Bids submitted must be firm for the award period and the contracted service period.

12. AVAILABILITY OF FUNDS:

A. The MSBSD reserves the right, at its sole discretion, to cancel this Invitation to Bid or any part thereof, at any time, prior to an award of contract issued under this Invitation to Bid.



12. AVAILABILITY OF FUNDS (CONT.):

B. Awards are contingent upon the appropriation of MSBSD budget funds.

13. REQUEST FOR ADDITIONAL INFORMATION:

A. The MSBSD reserves the right to request current audited financial statements; qualifications of management personnel, including project manager or field supervisors performance references; or other information deemed relevant at any time prior to bid award. Bidder agrees to provide such requested information within three (3) business days of the request.

B. Prior to the final selection, bidders may be required to submit additional information, which the MSBSD may deem necessary to further evaluate the bids.

C. The MSBSD reserves the right to make investigations of the qualifications of the bidder as it deems appropriate, including but not limited to a background investigation conducted by proper authorities.

14. PUBLIC RECORDS CLAUSE:

This Invitation to Bid and the resulting bids received, together with copies of all documents pertaining to the award of a contract, will be kept by the Purchasing Department and made a part of the record which will be open to public inspection, unless restricted by the bidder and School Board Policy, once the Notice of Intent to Award has been issued. If a bid contains any information which is proprietary or confidential, each page of the confidential information must be clearly marked with a diagonal watermark that reads "CONFIDENTIAL"; such information will be kept confidential if appropriate and will not be released to the public. The MSBSD is not responsible for the release of any documents not marked in this manner. A confidential watermark is required. The bid tabulation sheet shall be open to public inspection as soon as practicable after the Notice of Intent to Award has been issued.

15. PROTEST OF AWARD:

The MSBSD has a process in place for an unsuccessful bidder to submit a written protest, requesting a review of the bid award.

A. An unsuccessful bidder must submit its protest within days of the date of the Notice of Intent to Award issued by the MSBSD's Purchasing Department.

B. The protest must be made in writing, delivered to the same location as the original bid, and must set forth in detail the reason(s) for the protest, with specific reference to the relevant provision of the Bid Documents.

C. Upon receipt of the protest, the Purchasing Department shall schedule an informal hearing to include the successful bidder, the protesting bidder, the Assistant Superintendent of Business and Operations, and a representative of the Purchasing Department. At such time, the bidder making protest can express his/her concerns with said award.

D. Following the informal hearing, the Assistant Superintendent of Business and Operations will send the MSBSD's decision on the protest to all involved parties.

E. If the contract award for the proposed project is required to be approved by the MSBSD School Board, the involved parties will be notified of the date and time of the applicable School Board meeting.

16. CONTRACT:

The contract between the MSBSD and the bidder shall consist of (1) the Invitation to Bid and any attachments and/or amendments and/or addenda thereto; (2) the bid submitted by the bidder in response to the Invitation to Bid; and (3) the actual written agreement or contract. In the event of a conflict in language between the documents referenced above, the provisions and requirements set forth and/or referenced in the bid documents shall govern.

17. INSURANCE:

It is specifically agreed between the parties executing this agreement that it is not intended by any of the provisions of this agreement to create in the public or any member thereof a third-party benefit hereunder, or to authorize anyone not a party to this agreement to maintain a suit for personal injuries or property damage pursuant to the terms or provisions of this agreement. The successful bidder shall procure and maintain minimum insurance requirements and shall provide all required documentation as per attached Appendix 3 to the MSBSD upon award of this agreement. Failure to furnish proper evidence of insurance, or the lapse of insurance required under the provisions of this agreement, may be grounds for termination. The duties required under this subsection shall survive the termination expiration of this agreement. **It is highly recommended that the**



17. INSURANCE (CONT.):

bidders confer with their respective insurance companies or brokers to determine if their insurance program complies with the MSBSD's insurance requirements, as per attached Appendix 3.

18. LICENSES:

All individuals or businesses conducting business within the State of Alaska and within the Matanuska-Susitna Borough are hereby advised that they must obtain both a State of Alaska and a Matanuska-Susitna Borough business license. For information on how to obtain the appropriate business license or see if any exemptions may apply, please visit the following websites.

State of Alaska:

<https://www.commerce.alaska.gov/web/cpbl/BusinessLicensing/BusinessLicensingFormsFees.aspx>

Matanuska-Susitna Borough

<http://www.matsugov.us/business-licenses>

19. INVOICES AND METHOD OF PAYMENT:

Billings for services must be verified by a responsible representative of the MSBSD before payment can be made. Payments shall be made to the bidder within thirty (30) calendar days after the MSBSD receives and approves a written request for payment or invoice. The request for payment or invoice may be submitted to the MSBSD, Attn: Accounting Department, 501 N. Gulkana St., Palmer, AK 99645, or invoices can be e-mailed to accounting@matsuk12.us.

20. FEDERAL EXCISE TAXES:

The MSBSD is exempt from Federal Excise Taxes. An Exemption Certificate will be furnished upon request.

21. MODIFICATIONS:

The MSBSD may, from time to time, require modifications in the scope of services to be performed under this agreement. However, it is expressly understood that this agreement shall not under any circumstances be modified without written authorization from the MSBSD. All modifications in the terms of this agreement, to include adding additional schools or sites, shall be incorporated by written amendments to this agreement executed by both parties.

22. INDEMNIFICATION:

A. The Contractor shall indemnify, defend, and hold harmless the MSBSD from and against any claim of, or liability for, independent or sole negligent acts, errors, omissions, or willful misconduct of the Contractor under this Agreement. The Contractor is not required to indemnify, defend, or hold harmless the MSBSD for any claim of, or liability for, the independent or sole negligent acts, errors, omissions, or willful misconduct of the MSBSD. If there is a claim of, or liability for, a joint negligent act, error, omission, or willful misconduct of the Contractor and the MSBSD, the indemnification, defense, and hold harmless obligation of this provision shall be apportioned on a comparative fault basis. In this provision, "Contractor" and "MSBSD" include the employees, agents, and contractors who are directly responsible, respectively, to each. In this provision, "independent or sole negligent acts, errors, and omissions" means negligence other than in the MSBSD's selection, administration, monitoring, or controlling of the Contractor, or in approving or accepting the Contractor's work.

B. Any and all claims that might arise under the Worker's Compensation Act on behalf of the Contractor or other persons while engaged in the performance of the duties or services contemplated, and any and all claims that might be made by any third party as a result of any act or failure to act, shall be the Contractor's sole obligation and the Contractor shall indemnify and defend the MSBSD and hold it harmless from any liability for any act or failure to act on the part of the Contractor.

23. PROTECTION OF EQUIPMENT AND PROPERTY:

The bidder assumes full responsibility for and shall indemnify the MSBSD for any loss or damage to any MSBSD property resulting in whole or in part from the acts or omissions of the bidders, or any employee, agent or representative of the bidder.

24. BIDDER'S PERSONNEL REQUIREMENTS:

The MSBSD may, by serving written notice, require the bidder to promptly remove from the site of work any employee or worker the MSBSD deems incompetent, careless, or otherwise objectionable including, but not limited to, violation of MSBSD policies relating to alcohol, illegal drugs or firearms on MSBSD property.



25. EQUAL EMPLOYMENT OPPORTUNITY:

Bidders, in submitting bids, certify that if awarded a contract under this Invitation to Bid, they will not discriminate against any employee or applicant for employment because of race, color, religion, gender, age, national or ethnic origin, disability, marital status, change in marital status, pregnancy, parenthood, or any other basis prohibited by Alaska state or federal laws. The bidder will take affirmative action to ensure non-discrimination. Such action shall include but not be limited to the following: employment, upgrading, demotion or transfer, recruitment or recruitment advertising, layoff or termination, rates of pay or other forms of compensation, and selection for training, including apprenticeship. The bidder agrees to post in a conspicuous place, available to employees and applicants for employment, notices setting forth the provision of this non-discrimination clause.

26. DRUG, TOBACCO, AND ALCOHOL-FREE WORKPLACE:

The selected bidder agrees to comply with MSBSD School Board Policy (BP) 4020, Drug, Tobacco and Alcohol-Free Workplace. This policy states, in part: "In the interest of the health and safety of students and employees, it is a violation of this policy for students, staff, parents, visitors, contractors and all others to use, distribute or sell tobacco, any non-FDA-approved tobacco or nicotine delivery products or devices including but not limited to, cigarettes, cigars, dip, hookah pens, e-cigarettes, and dissolvable nicotine products on District premises, at school-sponsored activities on or off District premises and in District-owned, rented or leased vehicles."

27. CODE OF ETHICS:

A. The selected bidder shall comply with MSBSD School Board Policy BP 4119.21, Code of Ethics.

B. The selected bidder shall also comply with BP 3515.7, Restrictions on Sex Offenders on Campus. This policy states, in part: "To protect the morals, health, and safety of students, it is the policy of the district to deny entrance onto the premises of any district school or any building used for school activities to registered sex offenders or persons required to register under the sex offender registration act of whom the district has knowledge."

C. The selected bidder shall take affirmative action to ensure that no contractor, employee, or subcontractor who will be working on MSBSD property has a criminal record of any conviction for child abuse or assault, be on the State of Alaska or any State Sexual Offender Registry, or has been convicted of a crime of moral turpitude. Any waiver of this section must be in writing, signed by the District's Superintendent. The MSBSD has the right to verify such records at any time during the life of the contract.

28. OCCUPATIONAL SAFETY AND HEALTH WARRANTY:

If awarded the agreement, the bidder warrants that the products sold or services rendered shall conform to the standards and/or regulations promulgated by the U.S. Department of Labor under the Occupational Safety and Health Act of 1970 (29 U.S.C. 651, OL 91-596) and all amendments thereto. In the event the product sold does not conform to the OSHA standards and/or regulations, the MSBSD may return the product for correction or replacement at bidder's option and at bidder's expense. Services performed by the bidder which do not conform to OSHA standards and/or regulations must be corrected by bidder at bidder's expense or by the MSBSD at bidder's expense in the event bidder fails to make the appropriate correction within a reasonable time.

29. COMPLIANCE:

The selected bidder shall comply with all state, federal and local laws, regulations or orders applicable to the purchase, manufacture, processing and delivery of the service.

General Conditions:

- I. General Statement: The following conditions shall be followed by the selected bidder. These conditions shall be adhered to, relative to any project for which the selected bidder provides services. The MSBSD reserves the right to delete or alter the following terms and conditions or to add additional terms and conditions at its discretion. The selected bidder shall perform services and otherwise comply with all conditions as set forth in this Invitation to Bid including all attachments and appendices hereto and all additional requirements identified in the bid documents.
- II. Governing Laws: The agreement shall be governed as to performance and interpretation in accordance with the laws of the State of Alaska.
- III. Compliance with All Laws: The bidder shall comply with all applicable laws, ordinances, executive orders and regulations of the federal, state, and local government, which may in any manner affect the performance of the agreement and all applicable MSBSD policies, rules and procedures.
- IV. Relationship of All Parties: It is expressly understood and agreed by the bidder and the MSBSD that the bidder's relationship to the MSBSD is that of an independent contractor.



30. CONFLICT OF INTEREST:

A. The contracting party expressly represents that the contract is not contrary to MSBSD School Board Policy BP 2300, Conflict of Interest and that the contracting party has read and understands BP 2300. If this representation is false, the Superintendent may terminate the contract without regard to partial performance and in the event of such a termination, the MSBSD will have no further liability or obligation to the contracting party.

B. Any employee and/or employee with immediate family members that may have a financial interest in the contract must file an annual BP 2300, Conflict of Interest Affidavit with MSBSD. The following definitions apply to this policy: Immediate family member means an employee's grandparent, parent, child, grandchild, brother, sister, spouse, child of a spouse, or regular member of the employee's household.

31. ASSIGNMENTS AND SUBCONTRACTORS:

A. The bidder shall not sell, assign, transfer, or convey any contract resulting from this bid, in whole or in part, without the prior written consent of the MSBSD.

B. The bidder shall ensure that subcontractors are appropriately licensed, insured and bonded, and qualified to meet all of the requirements of this Invitation to Bid. If a bid with subcontractors is selected, the bidder must provide the following information concerning each prospective subcontractor within five (5) working days of the written request by the MSBSD:

- I. The complete name and address of the subcontractor;
- II. The type and percentage of work the subcontractor will perform;
- III. Certificate of Insurance
- IV. Other requested information relevant to the qualifications of the subcontractor.

C. contractors must comply with all licensing, indemnity, insurance limits, and insurance requirements imposed on the bidder.

32. TERMINATION FOR CAUSE:

A. If, through any cause, the bidder shall fail to fulfill in a timely and proper manner their obligation under this agreement, or if the bidder shall violate any of the covenants, agreements, or stipulations of any awarded contract, the MSBSD shall thereupon have the right to terminate this agreement by serving written notice to the bidder of such termination and specifying the effective date thereof, at least 30 (thirty) days before the effective date of such termination. However, if the MSBSD determines that the continuation of this agreement constitutes an imminent threat to the health and safety of its students and staff, this agreement may be terminated by the MSBSD effective immediately.

B. In the event it becomes necessary to terminate this agreement awarded as a result of this bid, regardless of the circumstances or time remaining on the contract, the bidder will be responsible for any and all expenses incurred by the MSBSD. These expenses can include, but are not limited to, cost of locating interim services, cost of re-issuing a bid, and any additional cost to the MSBSD by the new bidder greater than the current contract.

C. The bidder shall be entitled to receive just and equitable compensation for any satisfactory work completed in accordance with the payment provision as set forth under Section 18 of this bid document. Equitable compensation shall not exceed the amount reasonably billed for work actually done and expenses reasonably incurred. The MSBSD's contract administrator shall determine whether work completed is satisfactory.

33. TERMINATION FOR CONVENIENCE OF THE MSBSD:

A. The MSBSD may terminate any awarded contract or agreement at any time by serving written notice to the bidder of such termination and specifying the effective date of such termination at least 30 (thirty) days prior to the effective date of termination.

B. Upon termination of any awarded contract or agreement, the MSBSD shall pay the bidder any payments due at that time.

34. FAILURE OF FUNDING:

A. The MSBSD shall be excused from performance under the contract if funding is not appropriated.

B. The MSBSD may reduce the scope and amount of services provided under the contract to counteract a funding shortfall.



ATTACHMENT A: **SCOPE OF SERVICES**

1. GENERAL REQUIREMENTS

The Matanuska Susitna Borough School District (MSBSD) is seeking bids from qualified contractors to provide and install a buried 3,000-gallon tank for collection of wastewater generated by the Auto Shop and install a new disposal field. Please refer to the attached plans and specifications for additional information.

2. GENERAL INFORMATION

- A. Disposal field modifications shall be performed by a certified installer registered with the Alaska Department of Environmental Conservation (ADEC).
- B. All work will be completed in a workmanlike manner according to standard practices. The contractor is responsible for removal of debris and jobsite cleanup.
- C. Any alteration or deviation from written specifications involving extra costs shall only be executed upon a written change order signed by both the contractor and the MSBSD. Each written notice of changed conditions shall be clearly identified as such and shall include an estimate of the cost and the contract time impact of the alleged changed condition.
- D. The work schedule must be coordinated with the MSBSD Facilities Department before work begins.
- E. Contractor must provide minimum of a one (1) year warranty on work.

3. ADDITIONAL SUBMITTAL REQUIREMENTS

The following must be included with the bid or the bid may be considered non-responsive and be rejected:

- A. A copy of your current ADEC Certificate.

4. SCOPE

- A. The contractor is responsible for work shown in Appendix 7: Site Plans and Specifications.
- B. The MSBSD Facilities Department is responsible for securing appropriate permits for the work.

5. CONTRACT AWARD

The MSBSD will recommend award of a contract to the lowest responsive and responsible bidder based on total base bid.

6. CONTRACT TERM

The term of any contract resulting from this solicitation shall run through November 1, 2025. Substantial completion is August 8, 2025, and final completion is November 1, 2025.

7. CONTRACT MANAGEMENT

At the commencement of any resulting contract, the MSBSD and the successful bidder shall each designate a contract administrator. Such persons shall be the respective party's single point of contact for purposes of management of the contract. The bidder's contract administrator shall assume responsibility for the coordination of all contract issues under the contract.



**ATTACHMENT B:
SPECIAL CONDITIONS FOR CONSTRUCTION BIDS**

1. GENERAL INFORMATION:

The following special conditions apply to bids and contracts of a construction nature.

2. CONTRACT MANAGEMENT:

At the commencement of the resulting contract, the MSBSD and the successful bidder shall each designate a project manager. Such person shall be the respective party's single point of contact for purposes of management of the contract. The bidder's project manager shall assume responsibility for the coordination of all contract issues under the contract.

3. BONDS OF CONTRACTORS FOR PUBLIC BUILDING OR WORKS:

In certain circumstances, Alaska Statute AS 36.25.010 requires contractors to furnish to the state or a political subdivision of the state certain bonds, which become binding upon the award of the contract. If required, the successful bidder shall furnish a performance and payment bond in the full amount of the contract and shall maintain the bond in force during the duration of the contract. The bond shall be for the faithful performance of this contract in all respects including, but not limited to, payments for all materials and labor. All alterations, extensions of time, additional work, and other changes authorized by the contract documents may be made without securing the consent of the surety of sureties. The bond shall be with a corporate surety authorized to do business in Alaska, having an A.M. Best rating of B+7 or higher, and acceptable to the MSBSD. A Power of Attorney for the person signing the bond for the surety must be submitted with the bond.

4. WAGE RATES (STATE OF ALASKA PREVAILING WAGE SCALE AND ALASKA HIRE):

Attention of bidders is particularly called to the requirements of conditions of employment to be observed and minimum wage rates to be paid under the contract. The requirements of Alaska's Little Davis Bacon Act (AS 36.050.010) are applicable to this project. All work performed "on-site" is covered and subject to the provisions of this act. Each bidder must inform themselves fully of the conditions relating to the construction of the project and the employment of labor thereon and adhere to those conditions. Failure to do so will not relieve a successful bidder of their obligation to furnish all material and labor necessary to carry out the provisions of the contract. The State of Alaska, Department of Labor, Wage and Hour Administration Pamphlet No. 600 is available online at <http://labor.alaska.gov/lss/pamp600.htm>. Laborers' and Mechanics' minimum rates of pay are updated April 1 and September 1 of each year. It is the responsibility of the bidder to obtain the new labor wage and hour rates when available from the State of Alaska, Department of Labor, and to use the prevailing wage scale and hiring requirements when formulating their bid.

For the purposes of this Invitation to Bid, Issue # , released will apply.

5. LICENSES:

In addition to the licenses required in section 18 of the Instructions to Bidders, all individuals or businesses contracting for construction work under Alaska's Little Davis Bacon Act (AS 36.050.010) are hereby advised that they must obtain a contractor's license. For information on how to obtain the appropriate license or see if any exemptions may apply, please visit the following website: <https://www.commerce.alaska.gov/web/cbpl/ProfessionalLicensing/ConstructionContractors.aspx>.

6. SUBCONTRACTORS:

Refer to Section 31 of the Instructions to Bidders, entitled "Assignments and Subcontractors", for the MSBSD's requirements regarding subcontractors.

7. CONTRACTOR PERSONNEL:

The personnel identified or described in the bidder's proposal shall perform the services provided for the MSBSD under any resulting contract. The bidder agrees that any personnel substituted during the term of the contract must be able to conduct the required work to industry standards and be equally or better qualified than the personnel originally assigned. The MSBSD reserves the right to approve personnel assigned to work under the contract, and any changes or substitutions to such personnel. The MSBSD's approval of a substitution will not be unreasonably withheld. Any such approval or disapproval shall not relieve the bidder from its obligations under the contract. In the event that personnel become unavailable, it will be the bidder's responsibility to provide an equally qualified replacement in time to avoid delays to the work.



8. MEETINGS AND NOTIFICATIONS:

A. Technical or Contractual Problems: The bidder will be required to meet with the MSBSD's personnel, or designated representatives, to resolve technical or contractual problems that may occur during the term of the contract, at no additional cost to the MSBSD. Meetings will occur as problems arise and will be coordinated by the MSBSD. Failure to participate in problem resolution meetings or failure to make a good faith effort to resolve problems may result in termination of the contract.

B. Progress Meetings: During the term of the contract, the MSBSD's project manager will plan and schedule Project Status Meetings with the successful bidder to discuss the progress made by the bidder and the MSBSD in the performance of their respective obligations under the contract. Project managers for all subcontractors who are then performing work on the project or whose work affects the status of the project shall participate in person or by telephone conference in the Project Status Meeting. At each such meeting, the successful bidder shall provide the MSBSD with a written status report that identifies project status including all work completed and milestones completed, issue tracking/resolution including projected schedule to resolve issues, change management, any problem or circumstance encountered by bidder, or of which bidder gained knowledge during the period since the last such status report, which may prevent bidder from completing any of its obligations as required or that may generate charges in excess of those previously agreed to by the parties. The successful bidder shall identify the amount of excess charges, if any, and the cause of any identified problem or circumstance and the steps taken to remedy the same. Either party also may request additional Progress Status meetings. Upon two (2) business days' prior telephone, e-mail, or written notice from a party, the other party shall use good faith efforts to make itself available for any meetings during business hours reasonably requested by the other party. The successful bidder's subcontractors shall make good faith efforts to attend such meetings if requested by the MSBSD.

C. Failure to Notify: In the event successful bidder fails to specify in writing any problem or circumstance with respect to the period during the term covered by bidder's status report, it shall be conclusively presumed for purposes of the resulting contract that no such problem or circumstance arose during such period, and the bidder shall not be entitled to rely upon such problem or circumstance as a purported justification for either claiming it is entitled to receive any amount (including without limitation damages or additional charges arising out of a breach by the MSBSD of any MSBSD obligation) with respect to any of bidder's obligations under the contract in excess of those previously agreed to; or failing to complete any of bidder's obligations. Submission by the successful bidder of the status reports shall not alter, amend or modify the bidder's or the MSBSD's rights or obligations pursuant to any provision of the resulting contract.

D. MSBSD's Failure or Delay: For a problem or circumstance identified in the bidder's status report, which the bidder claims was the result of the MSBSD's failure or delay in discharging any MSBSD obligation, the MSBSD shall review and determine if such problem or circumstance was in fact the result of such alleged failure or delay. If the MSBSD agrees as to the cause of such problem or circumstance, then the parties shall extend any deadlines or due dates affected thereby, and provide for any additional charges by the bidder. If the MSBSD does not agree as to the cause of such problem or circumstance, the parties shall each attempt to resolve the problem or circumstance in a manner satisfactory to both parties.



ATTACHMENT C:
BID FORM

The undersigned hereby further proposes to furnish all services, including labor, supplies, and supervision necessary to isolate all wastewater generated from the Auto Shop to a buried 3,000-gallon steel holding tank and install a new domestic wastewater disposal field as further detailed in, and in full accordance with, the bid documents.

Item No.	Base Bid	Est Qty	Unit Price	Total Cost
1	Furnish And Install 3,000-Gallon Holding Tank	1	\$ _____	\$ _____
2	Furnish And Install New Domestic Wastewater Soil Disposal System	1	\$ _____	\$ _____
3	Selective Sampling per Specification Section 02 41 20	1	\$ _____	\$ _____
TOTAL BASE BID				\$ _____

Company: _____
Printed Name
Date

Contractor: _____
Signature

Contractor: _____
Printed Name



**APPENDIX 1:
ADDENDUM ACKNOWLEDGEMENT**

Please sign below to acknowledge receipt of all addenda. Return this form with your bid packet. Failure to acknowledge receipt of addenda may result in a determination of your proposal as non-responsive.

If no addenda have been issued, please indicate "NONE" below.

Addendum No.	Receipt Acknowledged (Signature)	Date
_____	_____	_____
_____	_____	_____
_____	_____	_____
_____	_____	_____
_____	_____	_____
_____	_____	_____
_____	_____	_____
_____	_____	_____
_____	_____	_____
_____	_____	_____
_____	_____	_____
_____	_____	_____
_____	_____	_____
_____	_____	_____
_____	_____	_____
_____	_____	_____
_____	_____	_____
_____	_____	_____
_____	_____	_____
_____	_____	_____
_____	_____	_____
_____	_____	_____



APPENDIX 2:
NON-COLLUSION CERTIFICATE

The bidder certifies that:

1. The prices in this offer have been arrived at independently and neither the bidder nor any representatives of the bidder has in any way colluded, conspired, connived, or agreed, directly or indirectly, with any other bidder, firm, or person relating to:
 - Those prices;
 - The intention to submit an offer; or
 - The methods or factors used to calculate the prices offered.
2. The prices in this offer have not and will not be knowingly disclosed by the bidder, directly or indirectly, to any other bidder or competitor before contract award unless otherwise required by law.
3. No attempt has been made or will be made by the bidder to induce any other concern to submit or not to submit an offer for the purpose of restricting competition.

Signature

Printed Name

Title

Business Name

Date



APPENDIX 3:
INSURANCE REQUIREMENT FOR CONTRACTORS

It is highly recommended that contractors and subcontractors confer with their respective insurance companies or brokers to determine if their insurance program complies with the Matanuska-Susitna Borough School District's (MSBSD) insurance requirements.

The contractor and subcontractors shall procure and maintain in force at all times during the term of this agreement, and at its own cost, the following insurance policies required hereunder. Failure to furnish proper evidence of insurance, or the lapse of insurance required under the provisions of the contract, may be grounds for termination.

The insurance companies shall be rated no less than A-7 by AM Best rating service. MSBSD reserves the right to review and revise any of the following insurance requirements, based on insurance market conditions, availability or affordability of coverage, or changes within the scope of work that applies to this contract. In addition, the MSBSD reserves the right to reject any insurance policies that fail to meet the criteria listed within this section, or insurance carriers that are in poor financial condition or become in poor financial condition during the term of this contract.

The Policies of insurance required shall include the following:

1. WORKERS' COMPENSATION INSURANCE:

Workers' Compensation insurance in compliance with the laws of the State of Alaska, with Statutory Limits, and Employers' Liability insurance with a limit no less than \$500,000 Bodily Injury by Accident-Each Accident, \$500,000 Bodily Injury by Disease-Each Employee, \$500,000, Bodily Injury by Disease Policy Limit, and any other coverage that may apply to work performed by employees in this agreement and any project hereunder.

2. COMMERCIAL GENERAL LIABILITY INSURANCE:

Commercial General Liability insurance on an occurrence form with limits of liability not less than \$1,000,000 per occurrence bodily injury and property damage, \$1,000,000 personal and advertising injury, and \$2,000,000 aggregate. Coverage shall include the following extensions: A) Contractual Liability; B) Premises/Operations; and C) Products/Completed Operations.

3. EXCESS LIABILITY INSURANCE:

Contractors and subcontractors shall procure and maintain during the life of this agreement, Excess Liability insurance with a limit of liability not less than \$1,000,000 per occurrence or claim, and \$1,000,000 policy aggregate.

4. BUSINESS AUTOMOBILE / MOTOR VEHICLE LIABILITY:

The contractors and subcontractors shall procure and maintain during the life of this agreement, Motor Vehicle Liability Insurance with limits of liability of not less than \$1,000,000 per occurrence combined single limit bodily injury and property damage. Coverage shall include all owned vehicles, all non-owned vehicles, and all hired vehicles.

5. ADDITIONAL INSURED:

The following shall be listed as an Additional Insured on each policy listed except Workers' Compensation, Professional Liability, and Errors & Omissions: the Matanuska-Susitna Borough School District including all agents, assigns, subsidiaries, subcontractors, employees, and volunteers of the MSBSD.

6. INDEMNIFICATION AND HOLD HARMLESS:

A. The Contractor shall indemnify, defend, and hold harmless the MSBSD from and against any claim of, or liability for, independent or sole negligent acts, errors, omissions, or willful misconduct of the Contractor under this Agreement. The Contractor is not required to indemnify, defend, or hold harmless the MSBSD for any claim of, or liability for, the independent or sole negligent acts, errors, omissions, or willful misconduct of the MSBSD. If there is a claim of, or liability for, a joint negligent act, error, omission, or willful misconduct of the Contractor and the MSBSD, the indemnification, defense, and hold harmless obligation of this provision shall be apportioned on a comparative fault basis. In this provision, "Contractor" and "MSBSD" include the employees, agents, and contractors who are directly responsible, respectively, to each. In this provision, "independent or sole negligent acts, errors, and omissions" means negligence other than in the MSBSD's selection, administration, monitoring, or controlling of the Contractor, or in approving or accepting the Contractor's work.

B. Any and all claims that might arise under the Worker's Compensation Act on behalf of the Contractor or other persons while engaged in the performance of the duties or services contemplated, and any and all claims that might be made by any third party as a result of any act or failure to act, shall be the Contractor's sole obligation and the Contractor shall indemnify and defend the MSBSD and hold it harmless from any liability for any act or failure to act on the part of the Contractor.



7. CANCELLATION NOTICE:

All insurance policies, as described above, shall include an endorsement stating the following: "thirty (30) days Advance Written Notice of Cancellation or Non-Renewal shall be sent to: MSBSD, Attn: Purchasing Department, 690 Cope Industrial Way, Palmer, AK 99645.

8. WAIVER OF SUBROGATION:

The insurer(s) shall agree to waive all rights of subrogation against the District, its Administrators, officers, officials, employees and volunteers for losses arising from work performed by the Contractor or any of its subcontractors for the District.

9. CERTIFICATES OF INSURANCE:

The contractors and subcontractors shall provide the MSBSD two (2) Certificates of Insurance and/or copies of policies acceptable to the MSBSD for the coverage's listed herein at the time the agreements are returned for execution.

10. CONTINUATION OF COVERAGE:

If any of the above coverage expires during the term of this agreement, the contractors and subcontractors shall deliver renewal certificates of insurance and/or policies to the MSBSD at least ten (10) days prior to the expiration date.

The duties required under this appendix shall survive the termination or expiration of this agreement.



**APPENDIX 4:
VENDOR PAPERWORK**

Please complete this form in its entirety. Any applicable supplemental documents can be attached as needed. A W-9, available at www.irs.gov/uac/about-form-w9, must be submitted with this form or the application will be denied.

Please check one: New Vendor Application Vendor Update/Change

Vendor Legal Name EIN or SSN

Operating Name (DBA)

Vendor Mailing Address

City, State, Zip Code

Vendor Remit-To Address

City, State, Zip Code

Vendor Contact Name

Contact E-mail Address Phone #

Vendor Website URL Fax #

Describe the services, materials, and/or equipment to be provided:

How long have you been in business providing these services, materials, and/or equipment? Describe any special instructions for shipping to Alaska:

Do you accept Purchase Orders (POs)? Yes No

How to you prefer to receive POs? Mail Email Fax

What is your preferred method of payment? EFT Check

Do you provide services to the public? Yes No

Do you have a current Business License?Do Yes No License # State

you have a State of AK Business License?Do Yes No License #

you have a Mat-Su Business License? Yes No License #

Are you currently an MSBSD employee? Yes* No *Stop. Complete a Conflict of Interest Affidavit.

Are you related to an MSBSD employee? Yes* No *Stop. MSBSD employee must complete a Conflict of Interest Affidavit.

Do you have employees? Yes* No *Do you carry Worker's Compensation insurance? Yes No

Upon request, can you provide three (3) references from individuals/companies you have served? Yes No

Authorized Agent Signature (Required)	Date	Printed Name and Title
Purchasing Department Use Only:		
W-9 Attached? <input type="checkbox"/> Yes <input type="checkbox"/> No	Approved? Yes <input type="checkbox"/> No* <input type="checkbox"/>	Vendor # <input type="text"/>
Pre-Pay? <input type="checkbox"/> Yes <input type="checkbox"/> No	Approved/Denied By <input type="text"/>	
Sent to Acctg.: <input type="text"/>	*Reason for Denial <input type="text"/>	
	Alt. Vendor # <input type="text"/>	Alt. Vendor Name <input type="text"/>

**APPENDIX 5:
PROPOSED SUBCONTRACTORS AND SUPPLIERS LIST**

NOTE: Please return this with your bid, if applicable. Put an "X" in the right columns indicating if the company is a sub-contractor or a supplier.

#	ITEM	CONTRACTOR NAME, ADDRESS, & E-MAIL	SUB	SUP
1				
2				
3				
4				
5				
6				
7				
8				
9				
10				

Signature

Company Name

Date



APPENDIX 6:
PRE-BID CONFERENCE

MAY 2, 2025

We will meet at the front doors at the times indicated below. Purchasing and Facilities Personnel will be available to help field questions. All questions will be answered in writing and sent out as an addendum.

Please call the Purchasing Department at (907) 861-5120 or send an email to bids@matsuk12.us with any questions regarding this conference schedule.

May 2, 2025

School Location	Time of Visit
Facilities Auto Shop 3901 E. Bogard Road, Wasilla, AK	10:00 a.m. – 11:00 a.m.



APPENDIX 7: SITE PLANS AND SPECIFICATIONS



NO.	DATE	DESCRIPTION
1		
2		
3		
4		
5		

HDL ENGINEERING
 civil - geotechnical - surveying - environmental - mechanical
 ANCHORAGE MAT-SU 907.564.2120
 KENAI 907.746.2300
 3333 Arctic Boulevard, Suite 100 Anchorage, AK 99503
 AEC1981 www.hdl-engineering.com

MATANUSKA-SUSTITNA BOROUGH SCHOOL DISTRICT
 BOARD MAINTENANCE SHOP WASTEWATER IMPROVEMENTS
 WASILLA, ALASKA
 SHEET: C1.01
 DATE: 08/2022
 DRAWN BY: JCS
 CHECKED BY: JCS
 DATE: 08/2022
 PROJECT: MAT-SU 907.564.2120
 SHEET: 24-012

SITE PLAN

- PROPOSED IMPROVEMENTS**
- ① CONNECT NEW HOLDING TANK TO EXISTING DRAIN PIPING. SEE DETAIL 1/C1.01.
 - ② CONNECT NEW DISPOSAL FIELD TO EXISTING PIPING DOWNSTREAM OF EXISTING SEPTIC TANK. INSTALL NEW DISPOSAL FIELD.

CLOSURE WORK ITEMS

- ① CUT AND PERMANENTLY CAP EXISTING DRAIN PIPING.
- ② SAMPLE EXISTING DISPOSAL FIELD. SEE SPECIFICATION SECTION 02 41 20.

PROJECT NOTES

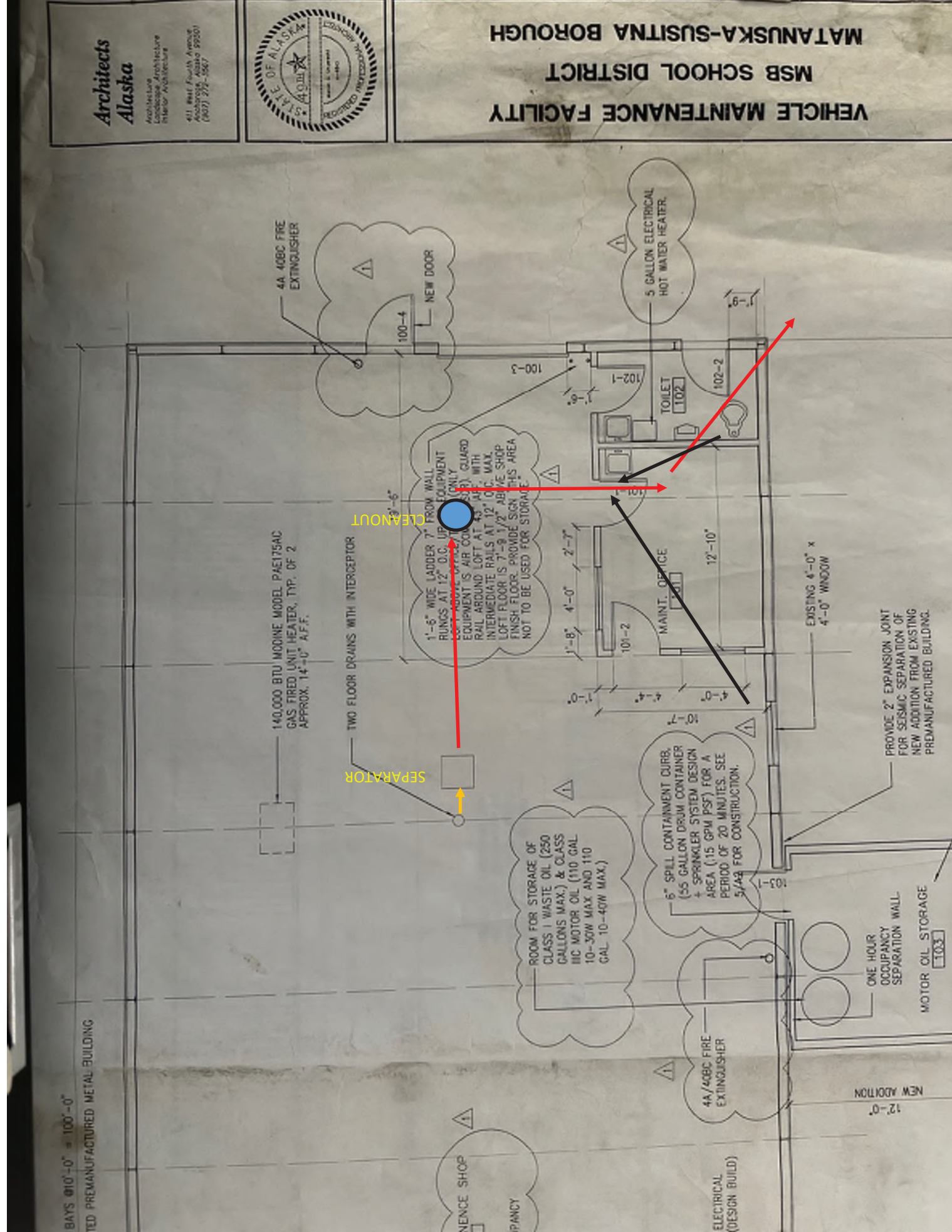
1. THE LOCATION OF EXISTING FEATURES, EQUIPMENT, PIPES, ETC. IN THE DRAWINGS ARE APPROXIMATE. THE CONTRACTOR SHALL BE RESPONSIBLE FOR OBTAINING FIELD VERIFICATION OF ALL DIMENSIONS AND LAYOUT PRIOR TO PROCEEDING WITH THE WORK. ANY DISCREPANCY IN THE PLANS SHALL BE REPORTED TO THE ATTENTION OF THE ENGINEER PRIOR TO PROCEEDING WITH THE WORK.
2. EXISTING DISPOSAL FIELD CONFIGURATION WAS NOT IDENTIFIED. APPROXIMATE LIMITS SHOWN.

CONSTRUCTION SEQUENCE REQUIREMENTS

1. GROUNDWATER DEPTH AT PROPOSED DISPOSAL FIELD LOCATION SHALL BE DETERMINED PRIOR TO INSTALLATION OF PROPOSED HOLDING TANK.
2. HOLDING TANK SHALL BE COMMISSIONED AND IN USE PRIOR TO THE PROPOSED DISPOSAL FIELD BEING PLACED IN SERVICE.
3. EXISTING DISPOSAL FIELD SHALL BE REMOVED FROM SERVICE ONLY AFTER THE PROPOSED DISPOSAL FIELD INSTALLATION IS COMPLETE. TRANSITION SHALL OCCUR AFTER NORMAL BUSINESS HOURS.

BID #B25-18

APPENDIX 7: SITE PLANS AND SPECIFICATIONS



SECTION 02 41 20 - SELECTIVE SAMPLING

PART 1 - GENERAL

1.1 SUMMARY

A. Section Includes:

1. Class V Well Closure sampling.

PART 2 - PRODUCTS

- 2.1 10-mil solid plastic liner.

PART 3 - EXECUTION

3.1 Sampling Requirements and Sequence:

- A. Coordinate sampling date and time with Engineer.
- B. Locate where the existing perforated piping within the existing disposal field begins (point of injection).
- C. Excavate to expose the point of injection.
- D. Clean all foreign debris from excavator bucket.
- E. Collect sample directly below point of injection and place sample on top of plastic liner for analysis by Engineer.
- F. Upon completion of Engineer's sampling activities (anticipated to be four (4) weeks), return sample to excavation and compact backfill.
- G. Restore site to existing conditions.

END OF SECTION 02 41 20

SECTION 33 34 00 - ONSITE WASTEWATER DISPOSAL

PART 1 - GENERAL

1.1 SECTION INCLUDES

- A. Soil disposal system for a small commercial facility with an expected peak design flow of 500 gallons per day or less of domestic wastewater.
- B. Wastewater holding tank.

1.2 INSTALLER REQUIREMENTS

- A. Sanitary sewer septic system modifications shall be performed by a Certified Installer registered with Alaska Department of Environmental Conservation (ADEC). Septic System shall comply with all ADEC requirements, including the following
 - 1. 18 AAC 72, latest edition.
 - 2. Installer's Manual for Conventional Onsite Domestic Wastewater Treatment and Disposal Systems, latest edition.

1.3 REFERENCE STANDARDS

- A. ADEC Regulations 18 AAC 72, latest edition.
- B. Installer's Manual for Conventional Onsite Domestic Wastewater Treatment and Disposal Systems, latest edition.
- C. Uniform Plumbing Code, latest edition.
- D. National Electrical Code (NEC), latest edition.

PART 2 - PRODUCTS

- A. Use materials that conform to 18 AAC 72 and Installer's Manual for Conventional Onsite Domestic Wastewater Treatment and Disposal Systems.
- B. Pipe and Fittings
 - 1. Pipe shall be Polyvinyl Chloride Pipe (PVC):
 - a. Shall match existing diameter.
 - b. Shall conform to AWWA C900.

- c. DR 18, unless otherwise approved in writing by Engineer.

2.2 HOLDING TANK

- A. Steel, pre-manufactured, nominal 3,000 gallon, single compartment tank, as manufactured by Anchorage Tank or approved equal.
1. Epoxy coated, interior and exterior. Devco bar Rust 236, or approved equal.
- B. Provide float activated high-water alarm for remote monitoring of tank. Sentinel 1 (115 volt) as manufactured by Orenco Systems, Inc, or equal. Mount alarm on building exterior in location coordinated with Owner. Alarm shall activate at Owner specified liquid level.
- C. Groundwater is not anticipated. If groundwater is encountered during excavation notify engineer immediately as the use of deadman anchors may be required.

2.3 INSULATION BOARD

- A. Rigid Board Insulation: All insulation boards shall be extruded or expanded polystyrene foam boards or approved equal, measuring minimum 2-inch by 2-feet by 8-feet, with a minimum compressive strength of 60 psi at 5 percent deformation (ASTM D-1621), maximum water absorption of 0.10 percent by volume (AASHTO M230) and minimum thermal resistance (R-value) of 4.5 per inch (ASTM C-177).

2.4 CLASS C BEDDING

U.S. Std. Sieve	Cumulative % Passing by Weight
2"	100
1/2"	40-100
#4	20-75
#10	12-60
#40	2-30
#200	0-6

2.5 SUBMITTALS

- A. Submit Product Data.

PART 3 - EXECUTION

3.1 CONSTRUCTION REQUIREMENTS

- A. Provide notification to Department per 18 AAC 72.550 at least one day before beginning construction or modification.

- B. Not later than 90 days after completing the installation or modification of a conventional onsite wastewater system under 18 AAC 72.511, the person responsible for construction of the system shall register the system by submitting a completed documentation of construction per 18 AAC 72.550.
- C. Furnish and install all incidental parts not shown on the Drawings or specified in this Section that are necessary for a complete system.
- D. Installation shall be in accordance with the Alaska Department of Environmental Conservation, Division of Environmental Health "Installer's Manual for Conventional Onsite Domestic Wastewater Treatment and Disposal Systems," latest edition.
- E. Grade of finished surfaces to provide positive drainage away from the septic improvements

3.2 EARTHWORK

- A. Protect subgrades from softening, undermining, washout and damage by rain or water accumulation. If necessary, install and maintain a dewatering system to keep subgrades dry.
- B. Final grading of finished surfaces will provide positive drainage away from the septic improvements.
- C. Excess excavated material shall be hauled off-site by the Contractor.
- D. Restore site to preexisting conditions.

3.3 PIPES AND FITTINGS

- A. Delivery, Storage and Handling:
 - 1. Do not store plastic structures, pipe and fittings in direct sunlight.
 - 2. Protect pipe, fittings and seals from dirt and damage.
- B. Drawing plans and details indicate location and arrangement of underground piping. Install piping as indicated. Notify engineer if conflicts with other utilities require modifications.
- C. Install piping beginning at low point, true to grades and alignment indicated with unbroken continuity of invert. Leach field laterals must be laid flat. Place bell ends of piping facing upstream. Install gaskets, seals, sleeves and couplings according to manufacturer's instructions and using lubricants, cements and other installation materials as required. Maintain swab or drag in line, and pull past each joint as it is completed.
- D. Use properly sized increasers, reducers and couplings where different sizes of pipes and fittings are connected.
- E. Field Quality Control:
 - 1. Use care when backfilling pipe such that line displacement, crushing, or other damage does not occur.

2. Repair all crushed, broken, cracked or otherwise damaged piping.
3. Replace defective piping using new materials, and repeat inspections until defects are within allowances specified.
4. Re-inspect and repeat procedure until results are satisfactory.

F. Testing:

1. Perform a hydrostatic exfiltration test on all new non-perforated pipe sections. Maintain a minimum head of 6 feet of water above the crown at the upper end of the test section for a minimum of four hours. Thereafter, observe the loss rate for a one-hour period for the actual test of leakage. During this one-hour period, the measured loss shall not exceed the rate of 50 gallons per inch diameter per mile per 24 hours.
2. Submit report to the Engineer for approval.
3. Replace leaking piping using new materials and repeat testing until leakage is within specified allowances.
4. Do not enclose, cover or put into service before inspection and approval test reports have been approved by the Engineer.

3.4 SEWER SYSTEM APPROVAL

- A. After installation of the sewer system is complete, submit testing reports and record drawings to the Engineer.
- B. Contractor shall submit Documentation of Construction per 18 AAC 72.

3.5 HOLDING TANK

- A. Install holding tank level on undisturbed soil or backfill compacted to 95% maximum density. Place Class C bedding material compacted to 95% maximum density to “spring line” of tank. Repair scratches or damage to tank per manufacturer’s recommendations.
- B. Connect the holding tank to existing piping from the MSBSD Auto Maintenance Shop via gravity flow piping.
- C. Install holding tank alarm system per manufacturer’s instructions. Install signaling cables between alarm box and holding tank in conduit per NEC.

END OF SECTION

Matanuska-Susitna Borough School District
Elementary School Calendar
2024 - 2025

Matanuska-Susitna Borough School District

S	M	T	W	T	F	S
---	---	---	---	---	---	---

JULY						
	1	2	3	H	5	6
7	8	9	10	11	12	13
14	15	16	17	18	19	20
21	22	23	24	25	26	27
28	29	30	31			

AUGUST						
				1	2	3
4	5	6	7	8	WD	10
11	PL	PL	WD	SO	16	17
18	19	20	21	KG	23	24
25	26	27	28	29	30	31

SEPTEMBER						
1	H	3	4	5	6	7
8	9	10	11	12	13	14
15	AK	17	18	19	20	21
22	23	24	25	26	27	28
29	30					

OCTOBER						
	1	2	3	4	5	
6	7	8	9	10	11	12
13	14	15	16	17	Q1	19
20	21	22	23	24	25	26
27	28	29	30	31		

NOVEMBER						
				1	2	
3	PC	PL	6	7	8	9
10	V	12	13	14	15	16
17	18	19	20	21	22	23
24	25	26	27	H	H	30

DECEMBER						
1	2	3	4	5	6	7
8	9	10	11	12	13	14
15	16	17	18	Q2	WD	21
22	V	V	H	V	V	28
29	V	V				

August

9	Work Day for Teachers (WD)*
12-13	Professional Learning Day (PL)*
14	Work Day for Teachers (WD)*
15	School Opens for 1-12 (SO)
22	First Day for Kindergarten and PK (KG)

September

2	Labor Day Holiday (H)*
16	AK Reads Act Day (AK)*

October

18	Quarter 1 Ends (46 Days)
----	--------------------------

November

4	Parent Conference Day (PC)*
5	Professional Learning Day (PL)*
11	Veterans Day (V)*
28-29	Thanksgiving Holiday (H)*

December

19	Quarter 2 Ends (38 Days)
20	Work Day for Teachers (WD)*
25	Christmas Holiday (H)*
23-31	Winter Vacation (V)*

January

1	New Years Day (H)*
2-3	Winter Vacation (V)*
20	Martin Luther King Jr. Day (H)*

February

10	Parent Conference Day (PC)*
17	Parent Conference Day (PC)*

March

6	Quarter 3 Ends (41 Days)
7	Work Day for Teachers (WD)*
10-14	Spring Vacation (V)*

May

2	Professional Learning Day (PL)*
21	Snow Day Makeup if needed (SN)
22	School Closes/Quarter 4 Ends (47 Days)
23	Work Day for Teachers (WD)*

*Indicates no school for students

S	M	T	W	T	F	S
---	---	---	---	---	---	---

JANUARY						
			H	V	V	4
5	6	7	8	9	10	11
12	13	14	15	16	17	18
19	H	21	22	23	24	25
26	27	28	29	30	31	

FEBRUARY						
						1
2	3	4	5	6	7	8
9	PC	11	12	13	14	15
16	PC	18	19	20	21	22
23	24	25	26	27	28	

MARCH						
						1
2	3	4	5	Q3	WD	8
9	V	V	V	V	V	15
16	17	18	19	20	21	22
23	24	25	26	27	28	29
30	31					

APRIL						
	1	2	3	4	5	
6	7	8	9	10	11	12
13	14	15	16	17	18	19
20	21	22	23	24	25	26
27	28	29	30			

MAY						
				1	PL	3
4	5	6	7	8	9	10
11	12	13	14	15	16	17
18	19	20	SN	SC	WD	24
25	H	27	28	29	30	31

JUNE						
1	2	3	4	5	6	7
8	9	10	11	12	13	14
15	16	17	18	19	20	21
22	23	24	25	26	27	28
29	30					

Matanuska-Susitna Borough School District
Elementary School Calendar
2025-2026

S	M	T	W	T	F	S
---	---	---	---	---	---	---

JULY						
		1	2	3	H	5
6	7	8	9	10	11	12
13	14	15	16	17	18	19
20	21	22	23	24	25	26
27	28	29	30	31		

AUGUST						
					1	2
3	4	5	6	7	WD	9
10	PL	PL	PL	SO	15	16
17	18	19	20	KG	22	23
24	25	26	27	28	29	30
31						

SEPTEMBER						
	H	2	3	4	5	6
7	8	9	10	11	12	13
14	AK	16	17	18	19	20
21	22	23	24	25	26	27
28	29	30				

OCTOBER						
		1	2	3	4	
5	6	7	8	9	10	11
12	13	14	15	16	Q1	18
19	20	21	22	23	24	25
26	27	28	29	30	31	

NOVEMBER						
						1
2	PC	4	5	6	7	8
9	PL	V	12	13	14	15
16	17	18	19	20	21	22
23	24	25	26	H	H	29
30						

DECEMBER						
	1	2	3	4	5	6
7	8	9	10	11	12	13
14	15	16	17	Q2	WD	20
21	V	V	V	H	V	27
28	V	V	V			

August

8	Work Day for Teachers (WD)*
11-13	Professional Learning Day (PL)*
14	School Opens for 1-12 (SO)
21	First Day for Kindergarten and PK (KG)

September

1	Labor Day Holiday (H)*
15	AK Reads Act Day (AK)*

October

17	Quarter 1 Ends (45 Days)
----	--------------------------

November

3	Parent Conference Day (PC)*
10	Professional Learning Day (PL)*
11	Veterans Day (V)*
27-28	Thanksgiving Holiday (H)*

December

18	Quarter 2 Ends (39 Days)
19	Work Day for Teachers (WD)*
25	Christmas Holiday (H)*
22-31	Winter Vacation (V)*

January

1	New Years Day (H)*
2	Winter Vacation (V)*
19	Martin Luther King Jr. Day (H)*

February

9	Parent Conference Day (PC)*
16	Parent Conference Day (PC)*

March

5	Quarter 3 Ends (41 Days)
6	Work Day for Teachers (WD)*
9-13	Spring Vacation (V)*

May

1	Professional Learning Day (PL)*
20	School Closes/Quarter 4 Ends (47 Days)
21	Work Day for Teachers (WD)*
22	Snow Day Makeup if needed (SN)

*Indicates no school for students

S	M	T	W	T	F	S
---	---	---	---	---	---	---

JANUARY						
				H	V	3
4	5	6	7	8	9	10
11	12	13	14	15	16	17
18	H	20	21	22	23	24
25	26	27	28	29	30	31

FEBRUARY						
1	2	3	4	5	6	7
8	PC	10	11	12	13	14
15	PC	17	18	19	20	21
22	23	24	25	26	27	28

MARCH						
1	2	3	4	Q3	WD	7
8	V	V	V	V	V	14
15	16	17	18	19	20	21
22	23	24	25	26	27	28
29	30	31				

APRIL						
			1	2	3	4
5	6	7	8	9	10	11
12	13	14	15	16	17	18
19	20	21	22	23	24	25
26	27	28	29	30		

MAY						
					PL	2
3	4	5	6	7	8	9
10	11	12	13	14	15	16
17	18	19	SC	WD	SN	23
24	H	26	27	28	29	30
31						

JUNE						
	1	2	3	4	5	6
7	8	9	10	11	12	13
14	15	16	17	18	19	20
21	22	23	24	25	26	27
28	29	30				

Matanuska-Susitna Borough School District Secondary School Calendar 2024 - 2025

S	M	T	W	T	F	S
---	---	---	---	---	---	---

JULY						
	1	2	3	H	5	6
7	8	9	10	11	12	13
14	15	16	17	18	19	20
21	22	23	24	25	26	27
28	29	30	31			

AUGUST						
				1	2	3
4	5	6	7	8	WD	10
11	PL	PL	WD	SO	16	17
18	19	20	21	KG	23	24
25	26	27	28	29	30	31

SEPTEMBER						
1	H	3	4	5	6	7
8	9	10	11	12	13	14
15	16	17	18	19	20	21
22	23	24	25	26	27	28
29	30					

OCTOBER						
		1	2	3	4	5
6	7	8	9	10	11	12
13	14	15	16	17	Q1	19
20	21	22	23	24	25	26
27	28	29	30	31		

NOVEMBER						
				1	2	
3	PC	PL	6	7	8	9
10	V	12	13	14	15	16
17	18	19	20	21	22	23
24	25	26	27	H	H	30

DECEMBER						
1	2	3	4	5	6	7
8	9	10	11	12	13	14
15	16	17	18	Q2	WD	21
22	V	V	H	V	V	28
29	V	V				

August

9	Work Day for Teachers (WD)*
12-13	Professional Learning Day (PL)*
14	Work Day for Teachers (WD)*
15	School Opens for 1-12 (SO)
22	First Day for Kindergarten and PK (KG)

September

2	Labor Day Holiday (H)*
---	------------------------

October

18	Quarter 1 Ends (46 Days)
----	--------------------------

November

4	Parent Conference Day (PC)*
5	Professional Learning Day (PL)*
11	Veterans Day (V)*
28-29	Thanksgiving Holiday (H)*

December

19	Quarter 2 Ends (38 Days)
20	Work Day for Teachers (WD)*
25	Christmas Holiday (H)*
23-31	Winter Vacation (V)*

January

1	New Years Day (H)*
2-3	Winter Vacation (V)*
20	Martin Luther King Jr. Day (H)*

February

17	Parent Conference Day (PC)*
----	-----------------------------

March

6	Quarter 3 Ends (41 Days)
7	Work Day for Teachers (WD)*
10-14	Spring Vacation (V)*

May

21	Snow Day Makeup if needed (SN)
22	School Closes/Quarter 4 Ends (47 Days)
23	Work Day for Teachers (WD)*

*Indicates no school for students

S	M	T	W	T	F	S
---	---	---	---	---	---	---

JANUARY						
			H	V	V	4
5	6	7	8	9	10	11
12	13	14	15	16	17	18
19	H	21	22	23	24	25
26	27	28	29	30	31	

FEBRUARY						
						1
2	3	4	5	6	7	8
9	10	11	12	13	14	15
16	PC	18	19	20	21	22
23	24	25	26	27	28	

MARCH						
						1
2	3	4	5	Q3	WD	8
9	V	V	V	V	V	15
16	17	18	19	20	21	22
23	24	25	26	27	28	29
30	31					

APRIL						
		1	2	3	4	5
6	7	8	9	10	11	12
13	14	15	16	17	18	19
20	21	22	23	24	25	26
27	28	29	30			

MAY						
				1	2	3
4	5	6	7	8	9	10
11	12	13	14	15	16	17
18	19	20	SN	SC	WD	24
25	H	27	28	29	30	31

JUNE						
1	2	3	4	5	6	7
8	9	10	11	12	13	14
15	16	17	18	19	20	21
22	23	24	25	26	27	28
29	30					

Matanuska-Susitna Borough School District
Secondary School Calendar
2025-2026

S	M	T	W	T	F	S
---	---	---	---	---	---	---

JULY						
		1	2	3	H	5
6	7	8	9	10	11	12
13	14	15	16	17	18	19
20	21	22	23	24	25	26
27	28	29	30	31		

AUGUST						
					1	2
3	4	5	6	7	WD	9
10	PL	PL	PL	SO	15	16
17	18	19	20	KG	22	23
24	25	26	27	28	29	30
31						

SEPTEMBER						
	H	2	3	4	5	6
7	8	9	10	11	12	13
14	15	16	17	18	19	20
21	22	23	24	25	26	27
28	29	30				

OCTOBER						
		1	2	3	4	
5	6	7	8	9	10	11
12	13	14	15	16	Q1	18
19	20	21	22	23	24	25
26	27	28	29	30	31	

NOVEMBER						
						1
2	PC	4	5	6	7	8
9	PL	V	12	13	14	15
16	17	18	19	20	21	22
23	24	25	26	H	H	29
30						

DECEMBER						
	1	2	3	4	5	6
7	8	9	10	11	12	13
14	15	16	17	Q2	WD	20
21	V	V	V	H	V	27
28	V	V	V			

August

8	Work Day for Teachers (WD)*
11-13	Professional Learning Day (PL)*
14	School Opens for 1-12 (SO)
21	First Day for Kindergarten and PK (KG)

September

1	Labor Day Holiday (H)*
---	------------------------

October

17	Quarter 1 Ends (46 Days)
----	--------------------------

November

3	Parent Conference Day (PC)*
10	Professional Learning Day (PL)*
11	Veterans Day (V)*
27-28	Thanksgiving Holiday (H)*

December

18	Quarter 2 Ends (39 Days)
19	Work Day for Teachers (WD)*
25	Christmas Holiday (H)*
22-31	Winter Vacation (V)*

January

1	New Years Day (H)*
2	Winter Vacation (V)*
19	Martin Luther King Jr. Day (H)*

February

16	Parent Conference Day (PC)*
----	-----------------------------

March

5	Quarter 3 Ends (42 Days)
6	Work Day for Teachers (WD)*
9-13	Spring Vacation (V)*

May

20	School Closes/Quarter 4 Ends (48 Days)
21	Work Day for Teachers (WD)*
22	Snow Day Makeup if needed (SN)

*Indicates no school for students

S	M	T	W	T	F	S
---	---	---	---	---	---	---

JANUARY						
				H	V	3
4	5	6	7	8	9	10
11	12	13	14	15	16	17
18	H	20	21	22	23	24
25	26	27	28	29	30	31

FEBRUARY						
1	2	3	4	5	6	7
8	9	10	11	12	13	14
15	PC	17	18	19	20	21
22	23	24	25	26	27	28

MARCH						
1	2	3	4	Q3	WD	7
8	V	V	V	V	V	14
15	16	17	18	19	20	21
22	23	24	25	26	27	28
29	30	31				

APRIL						
			1	2	3	4
5	6	7	8	9	10	11
12	13	14	15	16	17	18
19	20	21	22	23	24	25
26	27	28	29	30		

MAY						
					1	2
3	4	5	6	7	8	9
10	11	12	13	14	15	16
17	18	19	SC	WD	SN	23
24	H	26	27	28	29	30
31						

JUNE						
	1	2	3	4	5	6
7	8	9	10	11	12	13
14	15	16	17	18	19	20
21	22	23	24	25	26	27
28	29	30				

MINIMUM RATES OF PAY For Laborers and Mechanics

Effective April 1, 2025

Issue 50

PAMPHLET No. 600

Title 36. Public Contracts
AS 36.05

DEPARTMENT OF LABOR
AND WORKFORCE DEVELOPMENT
Wage and Hour

- This page intentionally left blank -



THE STATE
of **ALASKA**
GOVERNOR MIKE DUNLEAVY

Department of Labor and Workforce Development

Office of the Commissioner

Post Office Box 111149
Juneau, Alaska 99811
Main: 907.465.2700
fax: 907.465-2784

April 1, 2025

TO ALL CONTRACTING AGENCIES:

At the Alaska Department of Labor and Workforce Development our goal is putting Alaskans to work. This pamphlet is designed to help contractors awarded public construction contracts understand the most significant laws of the State of Alaska pertaining to prevailing wages.

This pamphlet identifies current prevailing wage rates for public construction contracts (any construction projects awarded for the State of Alaska or its political subdivisions, such as local governments and certain non-profit organizations). Because these rates may change in a subsequent determination, please be sure you are using the appropriate rates. The rates published in this edition become effective April 1, 2025.

The prevailing wage rates contained in this pamphlet are applicable to public construction projects with a final bid date of April 11, 2025, or later. As the law now provides, these rates will remain stable during the life of a contract or for 24 calendar months, whichever is shorter. **The 24-month period begins on the date the prime contract is awarded.** Upon expiration of the initial 24-month period, the latest wage rates issued by the department shall become effective for a subsequent 24-month period or until the original contract is completed, whichever occurs first. This process shall be repeated until the original contract is completed.

The term “original contract” means the signed contract that resulted from the original bid and any amendments, including changes of work scope, additions, extensions, change orders, and other instruments agreed to by the parties that have not been subject to subsequent open bid procedures.

If a higher federal rate is required due to partial federal funding or other federal participation, the higher rate must be paid.

For additional copies of this pamphlet go to: <http://labor.state.ak.us/lss/pamp600.htm>

For questions regarding prevailing wage or employment preference requirements, please contact the nearest Wage and Hour office. These offices are listed on Page x.

Sincerely,

A handwritten signature in blue ink that reads "Catherine Muñoz".

Catherine Muñoz
Commissioner

- This page intentionally left blank -

Table of Contents

Excerpts from Alaska Law

Sec. 36.05.005. Applicability.....iv
 Sec. 36.05.010. Wage rates on public construction. iv
 Sec. 36.05.040. Filing schedule of employees, wages paid and other information iv
 Sec. 36.05.045. Notice of work and completion; withholding of payment iv
 Sec. 36.05.060. Penalty for violation of this chapter v
 Sec. 36.05.070. Wage rates in specifications and contracts for public works v
 Sec. 36.05.080. Failure to pay agreed wages v
 Sec. 36.05.090. Payment of wages from withheld payments and listing contractors who violate contracts v
 Sec. 36.05.900. Definition.. vi

Excerpts from Alaska Administrative Code

8 AAC 30.051. Purpose vi
 8 AAC 30.052. Board and lodging; remote sites vi
 8 AAC 30.054. Per diem instead of board and lodging vi
 8 AAC 30.056. Alternative arrangement vii
 8 AAC 30.900. General definitions (selected excerpts)..... vii

Additional Information

Per Diem vii
 Laborer Classification Clarification..... viii
 Apprentice Rates..... viii
 Fringe Benefit Plans..... viii
 Special Prevailing Wage Rate Determination..... ix
 Alaska Employment Preference Information..... ix
 Labor Standards and Safety Notice Requests x
 Debarment List x

Wage Rates Pages 1-26

Note to Readers: The statutes and administrative regulations listed in this publication were taken from the official codes, as of the effective date of the publication. However, there may be errors or omissions that have not been identified and changes that occurred after the publication was printed. This publication is intended as an informational guide only and is not intended to serve as a precise statement of the statutes and regulations of the State of Alaska. To be certain of current laws and regulations, please refer to the official codes.

EXCERPTS FROM ALASKA LAW**Sec. 36.05.005. Applicability.**

This chapter applies only to a public construction contract that exceeds \$25,000.

Sec. 36.05.010. Wage rates on public construction.

A contractor or subcontractor who performs work on a public construction contract in the state shall pay not less than the current prevailing rate of wages for work of a similar nature in the region in which the work is done. The current prevailing rate of wages is that contained in the latest determination of prevailing rate of wages issued by the Department of Labor and Workforce Development at least 10 days before the final date for submission of bids for the contract. The rate shall remain in effect for the life of the contract or for 24 calendar months, whichever is shorter. At the end of the initial 24-month period, if new wage determinations have been issued by the department, the latest wage determination shall become effective for the next 24-month period or until the contract is completed, whichever occurs first. This process shall be repeated until the contract is completed.

Sec. 36.05.040. Filing schedule of employees, wages paid, and other information.

All contractors or subcontractors who perform work on a public construction contract for the state or for a political subdivision of the state shall, before the Friday of every second week, file with the Department of Labor and Workforce Development a sworn affidavit for the previous reporting period, setting out in detail the number of persons employed, wages paid, job classification of each employee, hours worked each day and week, and other information on a form provided by the Department of Labor and Workforce Development.

Sec. 36.05.045. Notice of work and completion; withholding of payment.

- (a) Before commencing work on a public construction contract, the person entering into the contract with a contracting agency shall designate a primary contractor for purposes of this section. Before work commences, the primary contractor shall file a notice of work with the Department of Labor and Workforce Development. The notice of work must list work to be performed under the public construction contract by each contractor who will perform any portion of work on the contract and the contract price being paid to each contractor. The primary contractor shall pay all filing fees for each contractor performing work on the contract, including a filing fee based on the contract price being paid for work performed by the primary contractor's employees. The filing fee payable shall be the sum of all fees calculated for each contractor. The filing fee shall be one percent of each contractor's contract price. The total filing fee payable by the primary contractor under this subsection may not exceed \$5,000. In this subsection, "contractor" means an employer who is using employees to perform work on the public construction contract under the contract or a subcontract.
- (b) Upon completion of all work on the public construction contract, the primary contractor shall file with the Department of Labor and Workforce Development a notice of completion together with payment of any additional filing fees owed due to increased contract amounts. Within 30 days after the department's receipt of the primary contractor's notice of completion, the department shall inform the contracting agency of the amount, if any, to be withheld from the final payment.
- (c) A contracting agency
 - (1) may release final payment of a public construction contract to the extent that the agency has received verification from the Department of Labor and Workforce Development that
 - (A) the primary contractor has complied with (a) and (b) of this section;
 - (B) the Department of Labor and Workforce Development is not conducting an investigation under this title; and
 - (C) the Department of Labor and Workforce Development has not issued a notice of a violation of this chapter to the primary contractor or any other contractors working on the public construction contract; and

- (2) shall withhold from the final payment an amount sufficient to pay the department's estimate of what may be needed to compensate the employees of any contractors under investigation on this construction contract, and any unpaid filing fees.
- (d) The notice and filing fee required under (a) of this section may be filed after work has begun if
 - (1) The public construction contract is for work undertaken in immediate response to an emergency; and
 - (2) The notice and fees are filed not later than 14 days after the work has begun.
- (e) A false statement made on a notice required by this section is punishable under AS 11.56.210.

Sec. 36.05.060. Penalty for violation of this chapter.

A contractor who violates this chapter is guilty of a misdemeanor and upon conviction is punishable by a fine of not less than \$100 nor more than \$1,000, or by imprisonment for not less than 10 days nor more than 90 days, or by both. Each day a violation exists constitutes a separate offense.

Sec. 36.05.070. Wage rates in specifications and contracts for public works.

- (a) The advertised specifications for a public construction contract that requires or involves the employment of mechanics, laborers, or field surveyors must contain a provision stating the minimum wages to be paid various classes of laborers, mechanics, or field surveyors and that the rate of wages shall be adjusted to the wage rate under AS 36.05.010.
- (b) Repealed by §17 ch 142 SLA 1972.
- (c) A public construction contract under (a) of this section must contain provisions that
 - (1) the contractor or subcontractors of the contractor shall pay all employees unconditionally and not less than once a week;
 - (2) wages may not be less than those stated in the advertised specifications, regardless of the contractual relationship between the contractor or subcontractors and laborers, mechanics, or field surveyors;
 - (3) the scale of wages to be paid shall be posted by the contractor in a prominent and easily accessible place at the site of the work;
 - (4) the state or a political subdivision shall withhold so much of the accrued payments as is necessary to pay to laborers, mechanics, or field surveyors employed by the contractor or subcontractors the difference between
 - (A) the rates of wages required by the contract to be paid laborers, mechanics, or field surveyors on the work; and
 - (B) the rates of wages in fact received by laborers, mechanics, or field surveyors.

Sec. 36.05.080. Failure to pay agreed wages.

Every contract within the scope of AS 36.05.070 shall contain a provision that if it is found that a laborer, mechanic, or field surveyor employed by the contractor or subcontractor has been or is being paid a rate of wages less than the rate of wages required by the contract to be paid, the state or its political subdivision may, by written notice to the contractor, terminate the contractor's right to proceed with the work or the part of the work for which there is a failure to pay the required wages and to prosecute the work to completion by contract or otherwise, and the contractor and the contractor's sureties are liable to the state or its political subdivision for excess costs for completing the work.

Sec. 36.05.090. Payment of wages from withheld payments and listing contractors who violate contracts.

- (a) The state disbursing officer in the case of a state public construction contract and the local fiscal officer in the case of a political subdivision public construction contract shall pay directly to laborers, mechanics, or field surveyors from accrued payments withheld under the terms of the contract the wages due laborers, mechanics, or field surveyors under AS 36.05.070.
- (b) The state disbursing officer or the local fiscal officer shall distribute to all departments of the state government and to all political subdivisions of the state a list giving the names of persons who have disregarded their obligations to employees. A person appearing on this list and a firm, corporation, partnership, or association in which the person has an interest may not work as a contractor or

subcontractor on a public construction contract for the state or a political subdivision of the state until three years after the date of publication of the list. If the accrued payments withheld under the contract are insufficient to reimburse all the laborers, mechanics, or field surveyors with respect to whom there has been a failure to pay the wages required under AS 36.05.070, the laborers, mechanics, or field surveyors have the right of action or intervention or both against the contractor and the contractor's sureties conferred by law upon persons furnishing labor or materials, and in the proceedings it is not a defense that the laborers, mechanics, or field surveyors accepted or agreed to accept less than the required rate of wages or voluntarily made refunds.

Sec. 36.05.900. Definition.

In this chapter, "contracting agency" means the state or a political subdivision of the state that has entered into a public construction contract with a contractor.

EXCERPTS FROM ALASKA ADMINISTRATIVE CODE

*****Notice:** Regulations relating to board and lodging and per diem went into effect on November 25, 2018. The new regulations are excerpted here***

8 AAC 30.051. Purpose. The purpose of 8 AAC 30.052 – 8 AAC 30.056 is to ensure that wages paid to laborers, mechanics, and field surveyors do not fall below the prevailing rate of pay.

8 AAC 30.052. Board and lodging; remote sites. (a) A contractor on a public construction project located 65 or more road miles from the international airport closest to the project area in either Fairbanks, Juneau, or Anchorage, or that is inaccessible by road in a two-wheel drive vehicle, shall provide adequate board and lodging to each laborer, mechanic, or field surveyor while the person is employed on the project. If commercial lodging facilities are not available, the contractor shall provide temporary lodging facilities. Lodging facilities must comply with all applicable state and federal laws. For a highway project, the location of the project is measured from the midpoint of the project.

(b) A contractor is not required to provide board and lodging:

(1) to a laborer, mechanic, or field surveyor who is a domiciled resident of the project area; or

(2) on a laborer, mechanic, or field surveyor's scheduled days off, when the person can reasonably travel between the project and the person's permanent residence; for the purposes of this paragraph, "scheduled day off" means a day in which a person does not perform work on-site, is not required to remain at or near the job location for the benefit of the contractor, and is informed of the day off at least seven days before the day off.

(c) Upon a contractor's written request, the commissioner may waive the requirements of (a) of this section where:

(1) the project is inaccessible by road in a two-wheel drive vehicle, but the laborer, mechanic, or field surveyor can reasonably travel between the project and the person's permanent residence within one hour; or

(2) a laborer, mechanic, or field surveyor is not a domiciled resident of the project area, but has established permanent residence, with the intent to remain indefinitely, within 65 road miles of the project, or for a highway project, the mid-point of the project.

8 AAC 30.054. Per diem instead of board and lodging. (a) A contractor may pay a laborer, mechanic, or field surveyor per diem instead of providing board and lodging, when the following conditions are met:

(1) the department determines that per diem instead of board and lodging is an established practice for the work classification; the department shall publish and periodically revise its determinations in the pamphlet *Laborers and Mechanics Minimum Rates of Pay*;

(2) the contractor pays each laborer, mechanic, or field surveyor the appropriate per diem rate as published and periodically revised in the pamphlet *Laborers and Mechanics Minimum Rates of Pay*; and

- (3) the contractor pays the per diem to each laborer, mechanic, or field surveyor on the same day that wages are paid.
- (b) A contractor may not pay per diem instead of board and lodging on a highway project located
- (1) west of Livengood on the Elliot Highway, AK-2;
 - (2) on the Dalton Highway, AK-11;
 - (3) north of milepost 20 on the Taylor Highway, AK-5;
 - (4) east of Chicken on the Top of the World Highway; or
 - (5) south of Tetlin Junction to the Alaska-Canada border on the Alaska Highway, AK-2.

8 AAC 30.056. Alternative arrangement. Upon a contractor’s written request, the commissioner may approve an alternative board and lodging or per diem arrangement, provided

- (1) the arrangement does not reduce the laborer, mechanic, or field surveyor’s wages below the prevailing wage rate; and
- (2) the laborer, mechanic, or field surveyor voluntarily enters into and signs the written arrangement; a labor organization representing laborers, mechanics, or field surveyors may enter into the written agreement on their behalf.

8 AAC 30.900. General definitions (selected excerpts only):

In this chapter and in AS 36

- (22) “domiciled resident” means a person living within 65 road miles of a public construction project, or in the case of a highway project, the mid-point of the project, for at least 12 consecutive months prior to the award of the public construction project;
- (23) “employed on the project” means the time period from the date the laborer, mechanic, or field surveyor first reports on-site to the project through the final date the person reports on-site to the project.

ADDITIONAL INFORMATION

PER DIEM

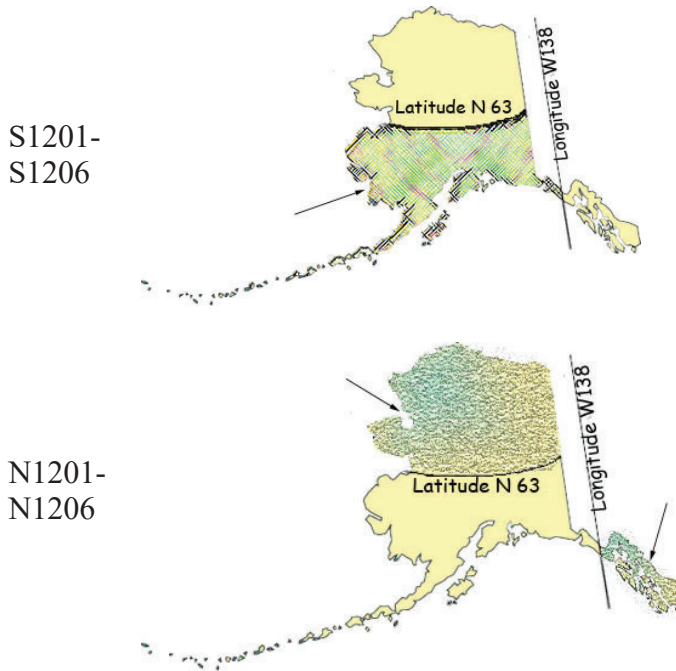
Notice: New regulations relating to board and lodging and per diem went into effect on November 25, 2018. The regulations provide a comprehensive set of requirements for the provision of board and lodging or per diem for workers on remote projects. Please refer to Alaska Administrative Code 8 AAC Chapter 30 and read the chapter carefully.

The Alaska Department of Labor and Workforce Development has determined that per diem is an established work practice for certain work classifications. These classifications are indicated throughout the Pamphlet by an asterisk (*) under the classification title. If all of the conditions of 8 AAC 30.054 are met, an employer may pay workers in these classifications per diem instead of providing board and lodging on a remote project.

Per Diem Rate: As of May 1, 2019, the minimum per diem rate is \$100.00 per day, or part thereof, the worker is employed on the project. In the event that a contractor provides lodging facilities, but no meals, the department will accept a payment of \$48 per day for meals to meet the per diem requirements.

LABORER CLASSIFICATION CLARIFICATION

The laborer rates categorized in class code S1201-S1206 apply in one area of Alaska; the area that is south of N63 latitude and west of W138 Longitude. The laborer rates categorized in class code N1201-N1206 apply in two areas of Alaska; the Alaska areas north of N63 latitude and east of W138 longitude. The following graphic representations should assist with clarifying the applicable wage rate categories:



APPRENTICE RATES

Apprentice rates at less than the minimum prevailing rates may be paid to apprentices according to an apprentice program which has been registered and approved by the Commissioner of the Alaska Department of Labor and Workforce Development in writing or according to a bona fide apprenticeship program registered with the U.S. Department of Labor, Office of Apprenticeship Training. **Any employee listed on a payroll at an apprentice wage rate who is not registered as above shall be paid the journeyman prevailing minimum wage in that work classification.** Wage rates are based on prevailing crew makeup practices in Alaska and apply to work performed regardless of either the quality of the work performed by the employee or the titles or classifications which may be assigned to individual employees.

FRINGE BENEFIT PLANS

Contractors/subcontractors may compensate fringe benefits to their employees in any one of three methods. The fringe benefits may be paid into a union trust fund, into an approved benefit plan, or paid directly on the paycheck as gross wages.

Where fringe benefits are paid into approved plans, funds, or programs including union trust funds, the payments must be contributed at least monthly. If contractors submit their own payroll forms and are paying fringe benefits into approved plans, funds, or programs, the employer’s certification must include, in addition to those requirements of 8 AAC 30.020(c), a statement that fringe benefit payments have been or will be paid at least monthly. Contractors who pay fringe benefits to a plan must ensure the plan is one approved by the Internal Revenue Service and that the plan meets the requirements of 8 AAC 30.025 (eff. 3/2/08) in order for payments to be credited toward the prevailing wage obligation.

SPECIAL PREVAILING WAGE RATE DETERMINATION

Special prevailing wage rate determinations may be requested for special projects or a special worker classification if the work to be performed does not conform to traditional public construction for which a prevailing wage rate has been established under 8 AAC 30.050(a) of this section. Requests for special wage rate determinations must be in writing and filed with the Commissioner at least 30 days before the award of the contract. An applicant for a special wage rate determination shall have the responsibility to support the necessity for the special rate. An application for a special wage rate determination filed under this section must contain:

- (1) a specification of the contract or project on which the special rates will apply and a description of the work to be performed;
- (2) a brief narrative explaining why special wage rates are necessary;
- (3) the job class or classes involved;
- (4) the special wage rates the applicant is requesting, including survey or other relevant wage data to support the requested rates;
- (5) the approximate number of employees who would be affected; and
- (6) any other information which might be helpful in determining if special wage rates are appropriate.

Requests made pursuant to the above should be addressed to:

Director
Alaska Department of Labor and Workforce Development
Labor Standards and Safety Division
Wage and Hour
P.O. Box 111149
Juneau, AK 99811-1149
-or-
Email: statewide.wagehour@alaska.gov

EMPLOYMENT PREFERENCE INFORMATION

In October 2019, the Alaska Attorney General issued a formal opinion stating that the Alaska Statutes 36.10.150 of the State's 90% Employment Preference law, also known as the Alaska Resident Hire law, violates both the U.S. and Alaska Constitutions. As a result, the state has stopped all enforcement activity. A copy of the Attorney General opinion is found here:

http://law.alaska.gov/pdf/opinions/opinions_2019/19-005_AK-hire.pdf

**Alaska Department of Labor and Workforce Development
Labor Standards and Safety Division
Wage and Hour
Web site: <http://labor.state.ak.us/lss/pamp600.htm>**

Anchorage

1251 Muldoon Road, Suite 113
Anchorage, Alaska 99504-2098
Phone: (907) 269-4900

Email:
statewide.wagehour@alaska.gov

Juneau

PO Box 111149
Juneau, Alaska 99811
Phone: (907) 465-4842

Email:
statewide.wagehour@alaska.gov

Fairbanks

Regional State Office Building
675 7th Ave., Station J-1
Fairbanks, Alaska 99701-4593
Phone: (907) 451-2886

Email:
statewide.wagehour@alaska.gov

LABOR STANDARDS AND SAFETY NOTICE REQUESTS

If you would like to receive Wage and Hour or Mechanical Inspection **regulation notices** or **publications information**, they are available via electronic mail, by signing up in the GovDelivery System, <https://public.govdelivery.com/accounts/AKDOL/subscriber/new> and selecting topics *LSS – Wage and Hour – Forms and Publications*, *LSS – Mechanical Inspection Regulations*, or *LSS – Wage and Hour Regulations*.

Publications are also available online at <http://labor.alaska.gov/lss/home.htm>

DEBARMENT LIST

AS 36.05.090(b) states that “the state disbursing officer or the local fiscal officer shall distribute to all departments of the state government and to all political subdivisions of the state a list giving the names of persons who have disregarded their obligations to employees.”

A person appearing on the following debarment list and a firm, corporation, partnership, or association in which the person has an interest may not work as a contractor or subcontractor on a public construction contract for the state or a political subdivision of the state for three years from the date of debarment.

Company Name

Debarment Expires

No companies are currently debarred.

Laborers' & Mechanics' Minimum Rates of Pay

Class Code	Classification of Laborers & Mechanics	BHR	H&W	PEN	TRN	Other Benefits	THR
------------	--	-----	-----	-----	-----	----------------	-----

Boilermakers

*See per diem note on last page

A0101	Boilermaker (journeyman)	54.08	8.57	18.72	2.50	VAC 4.25	SAF 0.34	88.46
--------------	--------------------------	-------	------	-------	------	----------	----------	-------

Bricklayers & Allied Craftworkers

*See per diem note on last page

A0201	Blocklayer, including:	52.77		9.91	0.66	L&M 0.20	ANU 2.45	65.99
--------------	------------------------	-------	--	------	------	----------	----------	-------

- Bricklayer
- Marble Mason
- Refractory Worker (Firebrick, Plastic, Castable, and Gunitite Refractory Applications)
- Stone Mason
- Terrazzo Worker
- Tile Setter

A0202	Pointer/Caulker/Cleaner (PCC)	52.77		9.91	0.66	L&M 0.20	ANU 2.45	65.99
--------------	-------------------------------	-------	--	------	------	----------	----------	-------

- Caulker
- Cleaner
- Tuck Pointer

A0203	Finisher	40.91		10.03	0.54	L&M 0.20	ANU 2.45	54.13
--------------	----------	-------	--	-------	------	----------	----------	-------

- Marble Finisher
- Terrazzo Finisher
- Tile Finisher

A0204	Torginal Applicator	40.91		10.03	0.54	L&M 0.20	ANU 2.45	54.13
--------------	---------------------	-------	--	-------	------	----------	----------	-------

Carpenters, Region I (North of 63 latitude)

*See per diem note on last page

N0301	Carpenter (journeyman)	50.79	8.75	16.80	0.77	L&M 0.10	SAF	77.21
--------------	------------------------	-------	------	-------	------	----------	-----	-------

- Lather/Drywall/Acoustical

Carpenters, Region II (South of N63 latitude)

*See per diem note on last page

S0301	Carpenter (journeyman)	50.79	8.75	17.34	0.77	L&M 0.10	SAF	77.75
--------------	------------------------	-------	------	-------	------	----------	-----	-------

Wage benefits key: ANU=Annuity, BHR=basic hourly rate; H&W=health and welfare; IAF=industry advancement fund; LEG=legal fund; L&M=labor/management fund; PEN=pension fund; SAF=safety; SUI=supplemental unemployment insurance; S&L=SUI & LEG combined; TRN=training; THR=total hourly rate; VAC=vacation

Class Code	Classification of Laborers & Mechanics	BHR	H&W	PEN	TRN	Other	Benefits	THR
Carpenters, Region II (South of N63 latitude)								
*See per diem note on last page								
S0301	Carpenter (journeyman)	50.79	8.75	17.34	0.77		L&M	SAF
	Lather/Drywall/Acoustical						0.10	77.75
Cement Masons								
*See per diem note on last page								
A0401	Group I, including:	49.28	8.80	11.80	1.68		L&M	
	Application of Sealing Compound							
	Application of Underlayment							
	Building, General							
	Cement Finisher							
	Cement Mason (journeyman)							
	Concrete							
	Concrete Paving							
	Concrete Polishing							
	Concrete Repair							
	Curb & Gutter, Sidewalk							
	Curing of All Concrete							
	General Concrete Pour Tender							
	Grouting & Caulking of Tilt-Up Panels							
	Grouting of All Plates							
	Patching Concrete							
	Screed Pin Setter							
	Screeder or Rodder							
	Spackling/Skim Coating							
A0402	Group II, including:	49.28	8.80	11.80	1.68		L&M	
	Form Setter						0.10	71.66
A0403	Group III, including:	49.28	8.80	11.80	1.68		L&M	
	Concrete Saw Cutter Operator (All Control Joints and Self-powered)							
	Curb & Gutter Machine							
	Floor Grinder							
	Pneumatic Power Tools							
	Power Chipping & Bushing							
	Sand Blasting Architectural Finish							
	Screed & Rodding Machine Operator							
	Troweling Machine Operator (all concrete surfaces)							
A0404	Group IV, including:	49.28	8.80	11.80	1.68		L&M	
							0.10	71.66

Wage benefits key: ANU=Annuity, BHR=basic hourly rate; H&W=health and welfare; IAF=industry advancement fund; LEG=legal fund; L&M=labor/management fund; PEN=pension fund; SAF=safety; SUI=supplemental unemployment insurance; S&L=SUI & LEG combined; TRN=training; THR=total hourly rate; VAC=vacation

Class Code	Classification of Laborers & Mechanics	BHR	H&W	PEN	TRN	Other Benefits	THR
------------	--	-----	-----	-----	-----	----------------	-----

Cement Masons
 *See per diem note on last page

							L&M	
A0404	Group IV, including:	49.28	8.80	11.80	1.68	0.10		71.66
	Acoustical or Imitation Acoustical Finish							
	Application of All Composition Mastic							
	Application of All Epoxy Finishes on Concrete Surfaces							
	Application of All Plastic Material							
	Finish Colored Concrete							
	Gunite Nozzleman							
	Hand Powered Grinder							
	Preparing, scratching and browsing of all ceilings and walls, finished with terrazo or tile							
	Tunnel Worker							

							L&M	
A0405	Group V, including:	49.28	8.80	11.80	1.68	0.10		71.66
	Casting and finishing							
	EIFS Systems							
	Finishing of all interior and exterior plastering							
	Fireproofing (Pryocrete, Cafco, Albi-Clad, sprayed fiberglass)							
	Gypsum, Portland Cement							
	Kindred material and products							
	Operation and control of all types of plastering machines, including power tools and floats, used by the industry							
	Overcoating and maintenance of interior/exterior plaster surfaces							
	Plasterer							
	Support and control of all concrete 3D printing operations (Excluding Paint)							
	Use of 3D structural and architectural printing and finishes							
	Use of sustainable materials and equipment practices							
	Veneer plastering process (Rapid Plaster, U.S.G. "Imperial Systems", and Pabcoat Systems")							
	Venetian plaster and color-integrated Italian/Middle-Eastern line plaster							

Culinary Workers

							LEG	
A0501	Baker/Cook	29.95	7.53	8.83				46.31
A0503	General Helper	25.92	7.53	8.83				42.28
	Housekeeper							
	Janitor							
	Kitchen Helper							

Wage benefits key: ANU=Annuity, BHR=basic hourly rate; H&W=health and welfare; IAF=industry advancement fund; LEG=legal fund; L&M=labor/management fund; PEN=pension fund; SAF=safety; SUI=supplemental unemployment insurance; S&L=SUI & LEG combined; TRN=training; THR=total hourly rate; VAC=vacation

Class Code	Classification of Laborers & Mechanics	BHR	H&W	PEN	TRN	Other Benefits	THR
------------	--	-----	-----	-----	-----	----------------	-----

Culinary Workers

A0504	Head Cook	29.95	7.53	8.83		LEG	46.31
A0505	Head Housekeeper	26.20	7.53	8.83		LEG	42.56
	Head Kitchen Help						

Dredgemen
*See per diem note on last page

A0601	Assistant Engineer	52.32	12.10	16.25	1.05	L&M 0.10	81.82
	Craneman						
	Electrical Generator Operator (primary pump/power barge/dredge)						
	Engineer						
	Welder						
A0602	Assistant Mate (deckhand)	50.93	12.10	16.25	1.05	L&M 0.10	80.43
A0603	Fireman	51.46	12.10	16.25	1.05	L&M 0.10	80.96
A0605	Leverman Clamshell	55.33	12.10	16.25	1.05	L&M 0.10	84.83
A0606	Leverman Hydraulic	53.23	12.10	16.25	1.05	L&M 0.10	82.73
A0607	Mate & Boatman	52.32	12.10	16.25	1.05	L&M 0.10	81.82
A0608	Oiler (dredge)	51.46	12.10	16.25	1.05	L&M 0.10	80.96

Electricians
*See per diem note on last page

A0701	Inside Cable Splicer	53.44	14.83	14.49	0.95	L&M 0.25	LEG 0.15	84.11
A0702	Inside Journeyman Wireman, including: Technicians (including use of drones in electrical construction)	53.44	14.83	14.49	0.95	L&M 0.25	LEG 0.15	84.11
A0703	Power Cable Splicer	74.34	14.83	19.92	0.95	L&M 0.25	LEG 0.15	110.44
A0704	Tele Com Cable Splicer	55.28	14.83	18.56	0.95	L&M 0.25	LEG 0.15	90.02

Wage benefits key: ANU=Annuity, BHR=basic hourly rate; H&W=health and welfare; IAF=industry advancement fund; LEG=legal fund; L&M=labor/management fund; PEN=pension fund; SAF=safety; SUI=supplemental unemployment insurance; S&L=SUI & LEG combined; TRN=training; THR=total hourly rate; VAC=vacation

Class Code	Classification of Laborers & Mechanics	BHR	H&W	PEN	TRN	Other	Benefits	THR
Electricians								
*See per diem note on last page								
						L&M	LEG	
A0705	Power Journeyman Lineman, including: Power Equipment Operator Technician (including use of drones in electrical construction)	72.59	14.83	19.87	0.95	0.25	0.15	108.64
						L&M	LEG	
A0706	Tele Com Journeyman Lineman, including: Technician (including use of drones in telecommunications construction) Tele Com Equipment Operator	53.53	14.83	18.51	0.95	0.25	0.15	88.22
						L&M	LEG	
A0707	Straight Line Installer - Repairman	53.53	14.83	18.51	0.95	0.25	0.15	88.22
						L&M	LEG	
A0708	Powderman	70.59	14.83	19.81	0.95	0.25	0.15	106.58
						L&M	LEG	
A0710	Material Handler	29.57	15.34	5.89	0.15	0.15	0.15	51.25
						L&M	LEG	
A0712	Tree Trimmer Groundman	32.97	14.83	14.84	0.15	0.15	0.15	63.09
						L&M	LEG	
A0713	Journeyman Tree Trimmer	42.23	14.83	15.12	0.15	0.15	0.15	72.63
						L&M	LEG	
A0714	Vegetation Control Sprayer	45.91	14.83	15.23	0.15	0.15	0.15	76.42
						L&M	LEG	
A0715	Inside Journeyman Communications CO/PBX	53.44	14.83	14.49	0.95	0.25	0.15	84.11
Elevator Workers								
*See per diem note on last page								
						L&M	VAC	
A0802	Elevator Constructor	50.01	16.28	21.36	0.80	1.60	5.55	95.60
						L&M	VAC	
A0803	Elevator Constructor Mechanic	71.44	16.28	21.36	0.80	1.60	7.93	119.41
Heat & Frost Insulators/Asbestos Workers (North of 63rd Parallel)								
*See per diem note on last page								
						IAF	LML	
N0902	Asbestos Abatement-Mechanical Systems	43.85	9.24	11.13	1.50	0.18	0.05	65.95
						IAF	LML	
N0903	Asbestos Abatement/General Demolition All Systems	43.85	9.24	11.13	1.50	0.18	0.05	65.95
						IAF	LML	
N0904	Insulator, Group II	43.85	9.24	11.13	1.50	0.18	0.05	65.95

Wage benefits key: ANU=Annuity, BHR=basic hourly rate; H&W=health and welfare; IAF=industry advancement fund; LEG=legal fund; L&M=labor/management fund; PEN=pension fund; SAF=safety; SUI=supplemental unemployment insurance; S&L=SUI & LEG combined; TRN=training; THR=total hourly rate; VAC=vacation

Class Code	Classification of Laborers & Mechanics	BHR	H&W	PEN	TRN	Other	Benefits	THR
------------	--	-----	-----	-----	-----	-------	----------	-----

Heat & Frost Insulators/Asbestos Workers (North of 63rd Parallel)
 *See per diem note on last page

N0905	Fire Stop	43.85	9.24	11.13	1.50	0.18	0.05	65.95
--------------	-----------	-------	------	-------	------	------	------	-------

Heat & Frost Insulators/Asbestos Workers (South of 63rd Parallel)
 *See per diem note on last page

S0902	Asbestos Abatement-Mechanical Systems	43.35	9.24	11.13	1.50	0.18	0.05	65.45
--------------	---------------------------------------	-------	------	-------	------	------	------	-------

S0903	Asbestos Abatement/General Demolition All Systems	43.35	9.24	11.13	1.50	0.18	0.05	65.45
--------------	---	-------	------	-------	------	------	------	-------

S0904	Insulator, Group II	43.35	9.24	11.13	1.50	0.18	0.05	65.45
--------------	---------------------	-------	------	-------	------	------	------	-------

S0905	Fire Stop	43.35	9.24	11.13	1.50	0.18	0.05	65.45
--------------	-----------	-------	------	-------	------	------	------	-------

IronWorkers
 *See per diem note on last page

A1101	Ironworkers, including:	46.49	10.16	26.45	0.87	0.20	0.24	84.41
--------------	-------------------------	-------	-------	-------	------	------	------	-------

- Bender Operators
- Bridge & Structural
- Hangar Doors
- Hollow Metal Doors
- Industrial Doors
- Machinery Mover
- Mass Timber Construction (Cross Laminate Timber)
- Ornamental
- Reinforcing
- Rigger
- Sheeter
- Signalman
- Stage Rigger
- Toxic Haz-Mat Work
- Welder

A1102	Helicopter	47.49	10.16	26.45	0.87	0.20	0.24	85.41
--------------	------------	-------	-------	-------	------	------	------	-------

- Helicopter (used for rigging and setting)
- Tower (energy producing windmill type towers to include nacelle and blades)

A1103	Fence/Barrier Installer	42.99	10.16	26.45	0.87	0.20	0.24	80.91
--------------	-------------------------	-------	-------	-------	------	------	------	-------

Wage benefits key: ANU=Annuity, BHR=basic hourly rate; H&W=health and welfare; IAF=industry advancement fund; LEG=legal fund; L&M=labor/management fund; PEN=pension fund; SAF=safety; SUI=supplemental unemployment insurance; S&L=SUI & LEG combined; TRN=training; THR=total hourly rate; VAC=vacation

Class Code	Classification of Laborers & Mechanics	BHR	H&W	PEN	TRN	Other	Benefits	THR
------------	--	-----	-----	-----	-----	-------	----------	-----

IronWorkers
 *See per diem note on last page

A1104	Guard Rail Layout Man	43.73	10.16	26.45	0.87	L&M	IAF	81.65
						0.20	0.24	
A1105	Guard Rail Installer	43.99	10.16	26.45	0.87	L&M	IAF	81.91
						0.20	0.24	

Laborers (The Alaska areas north of N63 latitude and east of W138 longitude)
 *See per diem note on last page

N1201	Group I, including:	40.25	10.55	21.51	2.00	L&M	LEG	74.86
						0.35	0.20	

- Asphalt Worker (shovelman, plant crew)
- Brush Cutter
- Camp Maintenance Laborer
- Carpenter Tender or Helper
- Choke Setter, Hook Tender, Rigger, Signalman
- Concrete Labor (curb & gutter, chute handler, curing, grouting, screeding)
- Crusher Plant Laborer
- Demolition Laborer
- Ditch Digger
- Dumpman
- Environmental Laborer (hazard/toxic waste, oil spill)
- Fence Installer
- Fire Watch Laborer
- Flagman
- Form Stripper
- General Laborer
- Guardrail Laborer, Bridge Rail Installer
- Hydro Seeder Nozzleman
- Laborer, Building
- Landscaper or Planter
- Laying of Mortarless Decorative Block (retaining walls, flowered decorative block 4 feet or less - highway or landscape work)
- Material Handler
- Pneumatic or Power Tools
- Portable or Chemical Toilet Serviceman
- Pump Man or Mixer Man
- Railroad Track Laborer
- Sandblast, Pot Tender
- Saw Tender
- Slurry Work
- Steam Cleaner Operator
- Steam Point or Water Jet Operator

Wage benefits key: ANU=Annuity, BHR=basic hourly rate; H&W=health and welfare; IAF=industry advancement fund; LEG=legal fund; L&M=labor/management fund; PEN=pension fund; SAF=safety; SUI=supplemental unemployment insurance; S&L=SUI & LEG combined; TRN=training; THR=total hourly rate; VAC=vacation

Class Code	Classification of Laborers & Mechanics	BHR	H&W	PEN	TRN	Other	Benefits	THR
------------	--	-----	-----	-----	-----	-------	----------	-----

Laborers (The Alaska areas north of N63 latitude and east of W138 longitude)
 *See per diem note on last page

						L&M	LEG	
N1201	Group I, including:	40.25	10.55	21.51	2.00	0.35	0.20	74.86

- Storm Water Pollution Protection Plan Worker (SWPPP Worker - erosion and sediment control Laborer)
- Tank Cleaning
- Utiliwalk & Utilidor Laborer
- Watchman (construction projects)
- Window Cleaner

						L&M	LEG	
N1202	Group II, including:	41.25	10.55	21.51	2.00	0.35	0.20	75.86

- Burning & Cutting Torch
- Cement or Lime Dumper or Handler (sack or bulk)
- Certified Erosion Sediment Control Lead (CESCL Laborer)
- Choker Splicer
- Chucktender (wagon, air-track & hydraulic drills)
- Concrete Laborer (power buggy, concrete saws, pumcrete nozzleman, vibratorman)
- Culvert Pipe Laborer
- Cured Inplace Pipelayer
- Environmental Laborer (asbestos, marine work)
- Floor Preparation, Core Drilling
- Foam Gun or Foam Machine Operator
- Green Cutter (dam work)
- Gunite Operator
- Hod Carrier
- Jackhammer/Chipping Gun or Pavement Breaker
- Laser Instrument Operator
- Laying of Mortarless Decorative Block (retaining walls, flowered decorative block over 4 feet - highway or landscape work)
- Mason Tender & Mud Mixer (sewer work)
- Pilot Car
- Pipelayer Helper
- Plasterer, Bricklayer & Cement Finisher Tender
- Powderman Helper
- Power Saw Operator
- Railroad Switch Layout Laborer
- Sandblaster
- Scaffold Building & Erecting
- Sewer Caulker
- Sewer Plant Maintenance Man
- Thermal Plastic Applicator
- Timber Faller, Chainsaw Operator, Filer
- Timberman

Wage benefits key: ANU=Annuity, BHR=basic hourly rate; H&W=health and welfare; IAF=industry advancement fund; LEG=legal fund; L&M=labor/management fund; PEN=pension fund; SAF=safety; SUI=supplemental unemployment insurance; S&L=SUI & LEG combined; TRN=training; THR=total hourly rate; VAC=vacation

Class Code	Classification of Laborers & Mechanics	BHR	H&W	PEN	TRN	Other	Benefits	THR
------------	--	-----	-----	-----	-----	-------	----------	-----

Laborers (The Alaska areas north of N63 latitude and east of W138 longitude)
 *See per diem note on last page

N1203	Group III, including:	42.15	10.55	21.51	2.00	L&M	LEG	76.76
--------------	-----------------------	-------	-------	-------	------	----------------	------------	-------

- Bit Grinder
- Camera/Tool/Video Operator
- Guardrail Machine Operator
- High Rigger & Tree Topper
- High Scaler
- Multiplate
- Plastic Welding
- Slurry Seal Squeegee Man
- Traffic Control Supervisor
- Welding Certified (in connection with laborer's work)

N1204	Group IIIA	46.53	10.55	21.51	2.00	L&M	LEG	81.14
--------------	------------	-------	-------	-------	------	----------------	------------	-------

- Asphalt Raker, Asphalt Belly Dump Lay Down
- Drill Doctor (in the field)
- Driller (including, but not limited to wagon drills, air-track drills, hydraulic drills)
- Pioneer Drilling & Drilling Off Tugger (all type drills)
- Pipelayers
- Powderman (Employee Possessor)
- Storm Water Pollution Protection Plan Specialist (SWPPP Specialist)
- Traffic Control Supervisor, DOT Qualified

N1205	Group IV	29.82	10.55	21.51	2.00	L&M	LEG	64.43
--------------	----------	-------	-------	-------	------	----------------	------------	-------

- Final Building Cleanup
- Permanent Yard Worker

N1206	Group IIIB	54.01	5.50	21.51	1.60	L&M	LEG	83.17
--------------	------------	-------	------	-------	------	----------------	------------	-------

- Driller (including, but not limited to wagon drills, air-track drills, hydraulic drills)(over 5,000 hours)
- Federal Powderman (Responsible Person in Charge)
- Grade Checking (setting or transferring of grade marks, line and grade, GPS, drones)
- Pioneer Drilling & Drilling Off Tugger (all type drills)(over 5,000 hours)
- Stake Hopper

Laborers (The area that is south of N63 latitude and west of W138 longitude)
 *See per diem note on last page

S1201	Group I, including:	40.25	10.55	21.51	2.00	L&M	LEG	74.86
--------------	---------------------	-------	-------	-------	------	----------------	------------	-------

- Asphalt Worker (shovelman, plant crew)

Wage benefits key: ANU=Annuity, BHR=basic hourly rate; H&W=health and welfare; IAF=industry advancement fund; LEG=legal fund; L&M=labor/management fund; PEN=pension fund; SAF=safety; SUI=supplemental unemployment insurance; S&L=SUI & LEG combined; TRN=training; THR=total hourly rate; VAC=vacation

Class Code	Classification of Laborers & Mechanics	BHR	H&W	PEN	TRN	Other	Benefits	THR
------------	--	-----	-----	-----	-----	-------	----------	-----

Laborers (The area that is south of N63 latitude and west of W138 longitude)
 *See per diem note on last page

						L&M	LEG	
S1201	Group I, including:	40.25	10.55	21.51	2.00	0.35	0.20	74.86
	Brush Cutter							
	Camp Maintenance Laborer							
	Carpenter Tender or Helper							
	Choke Setter, Hook Tender, Rigger, Signalman							
	Concrete Labor (curb & gutter, chute handler, curing, grouting, screeding)							
	Crusher Plant Laborer							
	Demolition Laborer							
	Ditch Digger							
	Dumpman							
	Environmental Laborer (hazard/toxic waste, oil spill)							
	Fence Installer							
	Fire Watch Laborer							
	Flagman							
	Form Stripper							
	General Laborer							
	Guardrail Laborer, Bridge Rail Installer							
	Hydro Seeder Nozzleman							
	Laborer, Building							
	Landscaper or Planter							
	Laying of Mortarless Decorative Block (retaining walls, flowered decorative block 4 feet or less - highway or landscape work)							
	Material Handler							
	Pneumatic or Power Tools							
	Portable or Chemical Toilet Serviceman							
	Pump Man or Mixer Man							
	Railroad Track Laborer							
	Sandblast, Pot Tender							
	Saw Tender							
	Slurry Work							
	Steam Cleaner Operator							
	Steam Point or Water Jet Operator							
	Storm Water Pollution Protection Plan Worker (SWPPP Worker - erosion and sediment control Laborer)							
	Tank Cleaning							
	Utiliwalk & Utilidor Laborer							
	Watchman (construction projects)							
	Window Cleaner							

S1202	Group II, including:	41.25	10.55	21.51	2.00	0.35	0.20	75.86
--------------	----------------------	-------	-------	-------	------	------	------	-------

Burning & Cutting Torch

Wage benefits key: ANU=Annuity, BHR=basic hourly rate; H&W=health and welfare; IAF=industry advancement fund; LEG=legal fund; L&M=labor/management fund; PEN=pension fund; SAF=safety; SUI=supplemental unemployment insurance; S&L=SUI & LEG combined; TRN=training; THR=total hourly rate; VAC=vacation

Class Code	Classification of Laborers & Mechanics	BHR	H&W	PEN	TRN	Other	Benefits	THR
------------	--	-----	-----	-----	-----	-------	----------	-----

Laborers (The area that is south of N63 latitude and west of W138 longitude)
 *See per diem note on last page

						L&M	LEG	
S1202	Group II, including:	41.25	10.55	21.51	2.00	0.35	0.20	75.86
	Cement or Lime Dumper or Handler (sack or bulk)							
	Certified Erosion Sediment Control Lead (CESCL Laborer)							
	Choker Splicer							
	Chucktender (wagon, air-track & hydraulic drills)							
	Concrete Laborer (power buggy, concrete saws, pumpcrete nozzleman, vibratorman)							
	Culvert Pipe Laborer							
	Cured Inplace Pipelayer							
	Environmental Laborer (asbestos, marine work)							
	Floor Preparation, Core Drilling							
	Foam Gun or Foam Machine Operator							
	Green Cutter (dam work)							
	Gunite Operator							
	Hod Carrier							
	Jackhammer/Chipping Gun or Pavement Breaker							
	Laser Instrument Operator							
	Laying of Mortarless Decorative Block (retaining walls, flowered decorative block over 4 feet - highway or landscape work)							
	Mason Tender & Mud Mixer (sewer work)							
	Pilot Car							
	Pipelayer Helper							
	Plasterer, Bricklayer & Cement Finisher Tender							
	Powderman Helper							
	Power Saw Operator							
	Railroad Switch Layout Laborer							
	Sandblaster							
	Scaffold Building & Erecting							
	Sewer Caulker							
	Sewer Plant Maintenance Man							
	Thermal Plastic Applicator							
	Timber Faller, Chainsaw Operator, Filer							
	Timberman							

						L&M	LEG	
S1203	Group III, including:	42.15	10.55	21.51	2.00	0.35	0.20	76.76
	Bit Grinder							
	Camera/Tool/Video Operator							
	Guardrail Machine Operator							
	High Rigger & Tree Topper							
	High Scaler							
	Multiplate							
	Plastic Welding							

Wage benefits key: ANU=Annuity, BHR=basic hourly rate; H&W=health and welfare; IAF=industry advancement fund; LEG=legal fund; L&M=labor/management fund; PEN=pension fund; SAF=safety; SUI=supplemental unemployment insurance; S&L=SUI & LEG combined; TRN=training; THR=total hourly rate; VAC=vacation

Class Code	Classification of Laborers & Mechanics	BHR	H&W	PEN	TRN	Other	Benefits	THR
------------	--	-----	-----	-----	-----	-------	----------	-----

Laborers (The area that is south of N63 latitude and west of W138 longitude)
 *See per diem note on last page

S1203	Group III, including:	42.15	10.55	21.51	2.00		L&M	LEG	
	Slurry Seal Squeegee Man						0.35	0.20	76.76
	Traffic Control Supervisor								
	Welding Certified (in connection with laborer's work)								

S1204	Group IIIA	46.53	10.55	21.51	2.00		L&M	LEG	
	Asphalt Raker, Asphalt Belly Dump Lay Down						0.35	0.20	81.14
	Drill Doctor (in the field)								
	Driller (including, but not limited to wagon drills, air-track drills, hydraulic drills)								
	Pioneer Drilling & Drilling Off Tugger (all type drills)								
	Pipelayers								
	Powderman (Employee Possessor)								
	Storm Water Pollution Protection Plan Specialist (SWPPP Specialist)								
	Traffic Control Supervisor, DOT Qualified								

S1205	Group IV	29.82	10.55	21.51	2.00		L&M	LEG	
	Final Building Cleanup						0.35	0.20	64.43
	Permanent Yard Worker								

S1206	Group IIIB	54.01	5.50	21.51	1.60		L&M	LEG	
	Driller (including, but not limited to wagon drills, air-track drills, hydraulic drills)(over 5,000 hours)						0.35	0.20	83.17
	Federal Powderman (Responsible Person in Charge)								
	Grade Checking (setting or transferring of grade marks, line and grade, GPS, drones)								
	Pioneer Drilling & Drilling Off Tugger (all type drills)(over 5,000 hours)								
	Stake Hopper								

Millwrights
 *See per diem note on last page

A1251	Millwright (journeyman)	55.42	8.75	15.00	1.11		L&M		
							0.20	0.25	80.73

A1252	Millwright Welder	56.42	8.75	15.00	1.11		L&M		
							0.20	0.25	81.73

Painters, Region I (North of N63 latitude)
 *See per diem note on last page

N1301	Group I, including:	40.33	9.97	15.10	1.10		L&M		
							0.10		66.60

Wage benefits key: ANU=Annuity, BHR=basic hourly rate; H&W=health and welfare; IAF=industry advancement fund; LEG=legal fund; L&M=labor/management fund; PEN=pension fund; SAF=safety; SUI=supplemental unemployment insurance; S&L=SUI & LEG combined; TRN=training; THR=total hourly rate; VAC=vacation

Class Code	Classification of Laborers & Mechanics	BHR	H&W	PEN	TRN	Other Benefits	THR
------------	--	-----	-----	-----	-----	----------------	-----

Painters, Region I (North of N63 latitude)
 *See per diem note on last page

N1301	Group I, including:	40.33	9.97	15.10	1.10	L&M 0.10	66.60
	Brush						
	General Painter						
	Hand Taping						
	Hazardous Material Handler						
	Lead-Based Paint Abatement						
	Roll						

N1302	Group II, including:	40.85	9.97	15.10	1.10	L&M 0.10	67.12
	Bridge Painter						
	Epoxy Applicator						
	General Drywall Finisher						
	Hand/Spray Texturing						
	Industrial Coatings Specialist						
	Machine/Automatic Taping						
	Pot Tender						
	Sandblasting						
	Specialty Painter						
	Spray						
	Structural Steel Painter						
	Wallpaper/Vinyl Hanger						

N1304	Group IV, including:	44.54	9.97	18.61	1.10	0.10	74.32
	Glazier						
	Storefront/Automatic Door Mechanic						

N1305	Group V, including:	39.66	9.97	5.00	1.10	0.10	55.83
	Carpet Installer						
	Floor Coverer						
	Heat Weld/Cove Base						
	Linoleum/Soft Tile Installer						

N1306	Group VI, including:	69.78	11.01	7.80	1.10	0.10	89.79
	Traffic Control Striper						

Painters, Region II (South of N63 latitude)
 *See per diem note on last page

S1301	Group I, including :	35.97	9.97	17.45	1.10	L&M 0.10	64.59
	Brush						

Wage benefits key: ANU=Annuity, BHR=basic hourly rate; H&W=health and welfare; IAF=industry advancement fund; LEG=legal fund; L&M=labor/management fund; PEN=pension fund; SAF=safety; SUI=supplemental unemployment insurance; S&L=SUI & LEG combined; TRN=training; THR=total hourly rate; VAC=vacation

Class Code	Classification of Laborers & Mechanics	BHR	H&W	PEN	TRN	Other	Benefits	THR
------------	--	-----	-----	-----	-----	-------	----------	-----

Painters, Region II (South of N63 latitude)
 *See per diem note on last page

S1301	Group I, including :	35.97	9.97	17.45	1.10		L&M 0.10	64.59
--------------	----------------------	-------	------	-------	------	--	------------------------	-------

- General Painter
- Hand Taping
- Hazardous Material Handler
- Lead-Based Paint Abatement
- Roll
- Spray

S1302	Group II, including :	37.22	9.97	17.45	1.10		L&M 0.10	65.84
--------------	-----------------------	-------	------	-------	------	--	------------------------	-------

- General Drywall Finisher
- Hand/Spray Texturing
- Machine/Automatic Taping
- Wallpaper/Vinyl Hanger

S1303	Group III, including :	37.32	9.97	17.45	1.10		L&M 0.10	65.94
--------------	------------------------	-------	------	-------	------	--	------------------------	-------

- Bridge Painter
- Epoxy Applicator
- Industrial Coatings Specialist
- Pot Tender
- Sandblasting
- Specialty Painter
- Structural Steel Painter

S1304	Group IV, including:	45.20	9.97	17.25	1.10		L&M 0.10	73.62
--------------	----------------------	-------	------	-------	------	--	------------------------	-------

- Glazier
- Storefront/Automatic Door Mechanic

S1305	Group V, including:	39.66	9.97	5.00	1.10		L&M 0.10	55.83
--------------	---------------------	-------	------	------	------	--	------------------------	-------

- Carpet Installer
- Floor Coverer
- Heat Weld/Cove Base
- Linoleum/Soft Tile Installer

S1306	Group VI, including:	69.78	11.01	7.80	1.10		0.10	89.79
--------------	----------------------	-------	-------	------	------	--	------	-------

- Traffic Control Striper

Piledrivers
 *See per diem note on last page

Wage benefits key: ANU=Annuity, BHR=basic hourly rate; H&W=health and welfare; IAF=industry advancement fund; LEG=legal fund; L&M=labor/management fund; PEN=pension fund; SAF=safety; SUI=supplemental unemployment insurance; S&L=SUI & LEG combined; TRN=training; THR=total hourly rate; VAC=vacation

Class Code	Classification of Laborers & Mechanics	BHR	H&W	PEN	TRN	Other	Benefits	THR
Piledrivers								
*See per diem note on last page								
A1401	Piledriver	50.79	8.75	16.80	0.77	L&M	IAF	77.21
	Assistant Dive Tender							
	Carpenter/Piledriver							
	Rigger							
	Sheet Stabber							
	Skiff Operator							
A1402	Piledriver-Welder/Toxic Worker	51.79	8.75	16.80	0.77	L&M	IAF	78.21
A1403	Remotely Operated Vehicle Pilot/Technician	55.10	8.75	16.80	0.77	L&M	IAF	81.52
	Single Atmosphere Suit, Bell or Submersible Pilot							
A1404	Diver (working) **See note on last page	94.90	8.75	16.80	0.77	L&M	IAF	121.32
A1405	Diver (standby) **See note on last page	55.10	8.75	16.80	0.77	L&M	IAF	81.52
A1406	Dive Tender **See note on last page	54.10	8.75	16.80	0.77	L&M	IAF	80.52
A1407	Welder (American Welding Society, Certified Welding Inspector)	56.35	8.75	16.80	0.77	L&M	IAF	82.77
Plumbers, Region I (North of N63 latitude)								
*See per diem note on last page								
N1501	Journeyman Pipefitter	51.66	12.45	18.70	1.75	L&M	S&L	85.76
	Plumber							
	Welder							
Plumbers, Region II (South of N63 latitude)								
*See per diem note on last page								
S1501	Journeyman Pipefitter	47.50	14.03	16.02	2.40	L&M		80.15
	Plumber							
	Welder							
Plumbers, Region IIA (1st Judicial District)								
*See per diem note on last page								
X1501	Journeyman Pipefitter	50.50	15.67	12.25	2.95	L&M		81.61

Wage benefits key: ANU=Annuity, BHR=basic hourly rate; H&W=health and welfare; IAF=industry advancement fund; LEG=legal fund; L&M=labor/management fund; PEN=pension fund; SAF=safety; SUI=supplemental unemployment insurance; S&L=SUI & LEG combined; TRN=training; THR=total hourly rate; VAC=vacation

Class Code	Classification of Laborers & Mechanics	BHR	H&W	PEN	TRN	Other	Benefits	THR
------------	--	-----	-----	-----	-----	-------	----------	-----

Plumbers, Region IIA (1st Judicial District)
 *See per diem note on last page

							L&M	
X1501	Journeyman Pipefitter	50.50	15.67	12.25	2.95	0.24		81.61
	Plumber							
	Welder							

Power Equipment Operators
 *See per diem note on last page

							L&M	
A1601	Group I, including:	53.23	12.10	16.25	1.05	0.10		82.73
	Asphalt Roller: Breakdown, Intermediate, and Finish							
	Back Filler							
	Barrier Machine (Zipper)							
	Beltcrete with Power Pack & similar conveyors							
	Bending Machine							
	Boat Coxswain							
	Bulldozer							
	Cableways, Highlines & Cablecars							
	Cleaning Machine							
	Coating Machine							
	Concrete Hydro Blaster							
	Cranes (45 tons & under or 150 feet of boom & under (including jib & attachments))							
	(a) Hydralifts or Transporters, (all track or truck type)							
	(b) Derricks							
	(c) Overhead							
	Crushers							
	Deck Winches, Double Drum							
	Ditching or Trenching Machine (16 inch or over)							
	Drag Scraper, Yarder, and similar types							
	Drilling Machines, Core, Cable, Rotary and Exploration							
	Finishing Machine Operator, Concrete Paving, Laser Screed, Sidewalk, Curb & Gutter Machine							
	Grade Checker and/or Line and Grade including Drone							
	Helicopters							
	Hover Craft, Flex Craft, Loadmaster, Air Cushion, All-Terrain Vehicle, Rollagon, Bargecable, Nodwell, & Snow Cat							
	Hydro Ax, Feller Buncher & similar							
	Hydro Excavation (Vac-Truck and Similar)							
	Loaders (2 1/2 yards through 5 yards, including all attachments):							
	(a) Forklifts (with telescopic boom & swing attachment)							
	(b) Front End & Overhead, (2-1/2 yards through 5 yards)							
	(c) Loaders, (with forks or pipe clamp)							
	(d) Loaders, (elevating belt type, Euclid & similar types)							

Wage benefits key: ANU=Annuity, BHR=basic hourly rate; H&W=health and welfare; IAF=industry advancement fund; LEG=legal fund; L&M=labor/management fund; PEN=pension fund; SAF=safety; SUI=supplemental unemployment insurance; S&L=SUI & LEG combined; TRN=training; THR=total hourly rate; VAC=vacation

Class Code	Classification of Laborers & Mechanics	BHR	H&W	PEN	TRN	Other	Benefits	THR
------------	--	-----	-----	-----	-----	-------	----------	-----

Power Equipment Operators
 *See per diem note on last page

							L&M	
A1601	Group I, including:	53.23	12.10	16.25	1.05	0.10		82.73
	Material Transfer Vehicle (Elevating Grader, Pickup Machine, and similar types)							
	Mechanic, Welder, Bodyman, Electrical, Camp & Maintenance Engineer							
	Micro Tunneling Machine							
	Mixers: Mobile type with hoist combination							
	Motor Patrol Grader							
	Mucking Machine: Mole, Tunnel Drill, Horizontal/Directional Drill Operator and/or Shield							
	Off-Road Hauler (including Articulating and Haul Trucks)							
	Operator on Dredges							
	Piledriver Engineer, L.B. Foster, Puller or similar paving breaker							
	Plant Operator (Asphalt & Concrete)							
	Power Plant, Turbine Operator 200 k.w & over (power plants or combination of power units over 300 k.w.)							
	Remote Controlled Equipment							
	Scraper (through 40 yards)							
	Service Oiler/Service Engineer							
	Shot Blast Machine							
	Shovels, Backhoes, Excavators with all attachments, and Gradealls (3 yards & under)							
	Sideboom (under 45 tons)							
	Sub Grader (Gurries & similar types)							
	Tack Tractor							
	Truck Mounted Concrete Pump, Conveyor/Tele-belt, & Creter							
	Wate Kote Machine							

							L&M	
A1602	Group IA, including:	55.33	12.10	16.25	1.05	0.10		84.83

- Camera/Tool/Video Operator (Slipline)
- Certified Welder, Electrical Mechanic, Camp Maintenance Engineer, Mechanic (over 10,000 hours)
- Cranes (over 45 tons or 150 feet including jib & attachments)
 - (a) Clamshells & Draglines (over 3 yards)
 - (b) Tower Cranes
- Licensed Water/Waste Water Treatment Operator
- Loaders (over 5 yards)
- Motor Patrol Grader, Dozer, Grade Tractor (finish: when finishing to final grade and/or to hubs, or for asphalt)
- Power Plants (1000 k.w. & over)
- Profiler, Reclaimer, and Roto-Mill
- Quad
- Scrapers (over 40 yards)

Wage benefits key: ANU=Annuity, BHR=basic hourly rate; H&W=health and welfare; IAF=industry advancement fund; LEG=legal fund; L&M=labor/management fund; PEN=pension fund; SAF=safety; SUI=supplemental unemployment insurance; S&L=SUI & LEG combined; TRN=training; THR=total hourly rate; VAC=vacation

Class Code	Classification of Laborers & Mechanics	BHR	H&W	PEN	TRN	Other	L&M	THR
Power Equipment Operators								
*See per diem note on last page								
A1602	Group IA, including:	55.33	12.10	16.25	1.05		0.10	84.83
	Screed							
	Shovels, Backhoes, Excavators with all attachments (over 3 yards)							
	Sidebooms (over 45 tons)							
	Slip Form Paver, C.M.I. & similar types							
	Topside (Asphalt Paver, Slurry machine, Spreaders, and similar types)							
A1603	Group II, including:	52.32	12.10	16.25	1.05		0.10	81.82
	Boiler - Fireman							
	Cement Hogs & Concrete Pump Operator							
	Conveyors (except those listed in Group I)							
	Hoists on Steel Erection, Towermobiles & Air Tuggers							
	Horizontal/Directional Drill Locator							
	Locomotives, Rod & Geared Engines							
	Mixers							
	Screening, Washing Plant							
	Sideboom (cradling rock drill, regardless of size)							
	Skidder							
	Trenching Machines (under 16 inches)							
	Water/Waste Water Treatment Operator							
A1604	Group III, including:	51.46	12.10	16.25	1.05		0.10	80.96
	"A" Frame Trucks, Deck Winches							
	Bombardier (tack or tow rig)							
	Boring Machine							
	Brooms, Power (sweeper, elevator, vacuum, or similar)							
	Bump Cutter							
	Compressor							
	Farm Tractor							
	Forklift, Industrial Type							
	Gin Truck or Winch Truck (with poles when used for hoisting)							
	Hoists, Air Tuggers, Elevators							
	Loaders:							
	(a) Elevating-Athey, Barber Greene & similar types							
	(b) Forklifts or Lumber Carrier (on construction job sites)							
	(c) Forklifts, (with tower)							
	(d) Overhead & Front End, (under 2-1/2 yards)							
	Locomotives: Dinkey (air, steam, gas & electric) Speeders							
	Mechanics, Light Duty							
	Oil, Blower Distribution							
	Posthole Digger, Mechanical							

Wage benefits key: ANU=Annuity, BHR=basic hourly rate; H&W=health and welfare; IAF=industry advancement fund; LEG=legal fund; L&M=labor/management fund; PEN=pension fund; SAF=safety; SUI=supplemental unemployment insurance; S&L=SUI & LEG combined; TRN=training; THR=total hourly rate; VAC=vacation

Class Code	Classification of Laborers & Mechanics	BHR	H&W	PEN	TRN	Other	Benefits	THR
------------	--	-----	-----	-----	-----	-------	----------	-----

Power Equipment Operators
 *See per diem note on last page

A1604	Group III, including:	51.46	12.10	16.25	1.05		L&M 0.10	80.96
	Pot Fireman (power agitated)							
	Power Plant, Turbine Operator, (under 200 k.w.)							
	Pumps, Water							
	Roller (other than Asphalt)							
	Saws, Concrete							
	Skid Hustler							
	Skid Steer (with all attachments)							
	Stake Hopper							
	Straightening Machine							
	Tow Tractor							

A1605	Group IV, including:	44.06	12.10	16.25	1.05		L&M 0.10	73.56
	Crane Assistant Engineer/Rig Oiler							
	Drill Helper							
	Parts & Equipment Coordinator							
	Spotter							
	Steam Cleaner							
	Swamper (on trenching machines or shovel type equipment)							

Roofers
 *See per diem note on last page

A1701	Roofer & Waterproofer	52.07	13.90	4.01	0.81		L&M 0.10	0.09	70.98
A1702	Roofer Material Handler	38.68	13.90	4.01	0.81		L&M 0.10	0.09	57.59

Sheet Metal Workers, Region I (North of N63 latitude)
 *See per diem note on last page

N1801	Sheet Metal Journeyman	54.00	12.80	15.94	1.80		L&M 0.12		84.66
	Air Balancing and duct cleaning of HVAC & HVAC-R systems								
	Brazing, soldering or welding of metals								
	Demolition of sheet metal HVAC & HVAC-R systems								
	Fabrication and installation of exterior wall sheathing, siding, metal roofing, flashing, decking and architectural sheet metal work								
	Fabrication and installation of heating, ventilation and air conditioning ducts and equipment								
	Fabrication and installation of louvers and hoods								
	Fabrication and installation of sheet metal lagging								

Wage benefits key: ANU=Annuity, BHR=basic hourly rate; H&W=health and welfare; IAF=industry advancement fund; LEG=legal fund; L&M=labor/management fund; PEN=pension fund; SAF=safety; SUI=supplemental unemployment insurance; S&L=SUI & LEG combined; TRN=training; THR=total hourly rate; VAC=vacation

Class Code	Classification of Laborers & Mechanics	BHR	H&W	PEN	TRN	Other	Benefits	THR
------------	--	-----	-----	-----	-----	-------	----------	-----

Sheet Metal Workers, Region I (North of N63 latitude)
 *See per diem note on last page

							L&M	
N1801	Sheet Metal Journeyman	54.00	12.80	15.94	1.80	0.12		84.66

- Fabrication and installation of stainless steel commercial or industrial food service equipment & wall sheathing
- HVAC & HVAC-R Service Mechanic, servicing and maintaining and making operable HVAC & HVAC-R Systems
- HVAC & HVAC-R systems controls and programming
- Manufacture, fabrication assembly, installation and alteration of all ferrous and nonferrous metal work
- Metal lavatory partitions
- Preparation of drawings taken from architectural and engineering plans required for fabrication and erection of sheet metal work
- Sheet Metal shelving, lockers
- Sheet Metal venting, chimneys and breaching
- Skylight installation

Sheet Metal Workers, Region II (South of N63 latitude)
 *See per diem note on last page

							L&M	
S1801	Sheet Metal Journeyman	48.75	12.80	15.30	2.06	0.43		79.34

- Air Balancing and duct cleaning of HVAC & HVAC-R systems
- Brazing, soldering or welding of metals
- Demolition of sheet metal HVAC & HVAC-R systems
- Fabrication and installation of exterior wall sheathing, siding, metal roofing, flashing, decking and architectural sheet metal work
- Fabrication and installation of heating, ventilation and air conditioning ducts and equipment
- Fabrication and installation of louvers and hoods
- Fabrication and installation of sheet metal lagging
- Fabrication and installation of stainless steel commercial or industrial food service equipment & wall sheathing
- HVAC & HVAC-R Service Mechanic, servicing and maintaining and making operable HVAC & HVAC-R Systems
- HVAC & HVAC-R systems controls and programming
- Manufacture, fabrication assembly, installation and alteration of all ferrous and nonferrous metal work
- Metal lavatory partitions
- Preparation of drawings taken from architectural and engineering plans required for fabrication and erection of sheet metal work
- Sheet Metal shelving, lockers
- Sheet Metal venting, chimneys and breaching
- Skylight installation

Wage benefits key: ANU=Annuity, BHR=basic hourly rate; H&W=health and welfare; IAF=industry advancement fund; LEG=legal fund; L&M=labor/management fund; PEN=pension fund; SAF=safety; SUI=supplemental unemployment insurance; S&L=SUI & LEG combined; TRN=training; THR=total hourly rate; VAC=vacation

Class Code	Classification of Laborers & Mechanics	BHR	H&W	PEN	TRN	Other Benefits	THR
------------	--	-----	-----	-----	-----	----------------	-----

Sprinkler Fitters
 *See per diem note on last page

A1901	Sprinkler Fitter	56.61	12.40	18.45	0.54	L&M 0.25	88.25
--------------	------------------	-------	-------	-------	------	-------------	-------

Surveyors
 *See per diem note on last page

A2001	Chief of Parties	59.93	13.48	14.64	1.30	L&M 0.10	89.45
--------------	------------------	-------	-------	-------	------	-------------	-------

A2002	Party Chief	55.78	13.48	14.64	1.30	L&M 0.10	85.30
--------------	-------------	-------	-------	-------	------	-------------	-------

A2003	Line & Grade Technician/Office Technician/GPS, Drones	52.77	13.48	14.64	1.30	L&M 0.10	82.29
--------------	---	-------	-------	-------	------	-------------	-------

A2004	Associate Party Chief (including Instrument Person & Head Chain Person)/Stake Hop/Grademan	50.31	13.48	14.64	1.30	L&M 0.10	79.83
--------------	--	-------	-------	-------	------	-------------	-------

A2006	Chain Person (for crews with more than 2 people)	45.29	13.48	14.64	1.30	L&M 0.10	74.81
--------------	--	-------	-------	-------	------	-------------	-------

Truck Drivers
 *See per diem note on last page

A2101	Group I, including:	51.58	13.48	14.64	1.30	L&M 0.10	81.10
--------------	---------------------	-------	-------	-------	------	-------------	-------

- Air/Sea Traffic Controllers
- Ambulance/Fire Truck Driver (EMT certified)
- Boat Coxswain
- Captains & Pilots (air & water)
- Deltas, Commanders, Rollagons, & similar equipment (when pulling sleds, trailers or similar equipment)
- Dump Trucks (including articulating end dumps, rockbuggy, side dump, belly dump, & trucks with pups) over 40 yards up to & including 60 yards
- Fueler
- Helicopter Transporter
- Liquid Vac Truck/Super Vac Truck
- Material Coordinator or Purchasing Agent
- Oil Distributor Truck
- Ready-mix (over 12 yards up to & including 15 yards) (over 15 yards to be negotiated)
- Semi with Double Box Mixer
- Tireman, Medium Duty (Truck Tires up to 1200-24")
- Water Wagon (250 Bbls and above)

A2102	Group 1A including:	53.05	13.48	14.64	1.30	L&M 0.10	82.57
--------------	---------------------	-------	-------	-------	------	-------------	-------

Wage benefits key: ANU=Annuity, BHR=basic hourly rate; H&W=health and welfare; IAF=industry advancement fund; LEG=legal fund; L&M=labor/management fund; PEN=pension fund; SAF=safety; SUI=supplemental unemployment insurance; S&L=SUI & LEG combined; TRN=training; THR=total hourly rate; VAC=vacation

Class Code	Classification of Laborers & Mechanics	BHR	H&W	PEN	TRN	Other Benefits	THR
------------	--	-----	-----	-----	-----	----------------	-----

Truck Drivers
 *See per diem note on last page

A2102	Group 1A including:	53.05	13.48	14.64	1.30	L&M 0.10	82.57
--------------	---------------------	-------	-------	-------	------	------------------------	-------

- Dump Trucks (including rockbuggy, side dump, belly dump & trucks with pups) over 60 yards up to & including 100 yards (over 100 yards to be negotiated)
- Jeeps (driver under load)
- Lowboys, including tractor attached trailers & jeeps, up to & including 12 axles (over 12 axles or 150 tons to be negotiated)
- Tireman Heavy Duty (earthmover tires, i.e., loader, scraper, haul truck)

A2103	Group II, including:	50.12	13.48	14.64	1.30	L&M 0.10	79.64
--------------	----------------------	-------	-------	-------	------	------------------------	-------

- All Deltas, Commanders, Rollagons, & similar equipment
- Batch Trucks (8 yards & up)
- Batch Trucks (up to & including 7 yards)
- Boom Truck/Knuckle Truck (over 5 tons)
- Cacasco Truck/Heat Stress Truck
- Construction and Material Safety Technician
- Dump Trucks (including articulating end dump, rockbuggy, side dump, belly dump, & trucks with pups) over 20 yards up to & including 40 yards
- Gin Pole Truck, Winch Truck, Wrecker (truck mounted "A" frame manufactured rating over 5 tons)
- Mechanics
- Partsman
- Ready-mix (up to & including 12 yards)
- Stringing Truck
- Turn-O-Wagon or DW-10 (not self loading)

A2104	Group III, including:	49.17	13.48	14.64	1.30	L&M 0.10	78.69
--------------	-----------------------	-------	-------	-------	------	------------------------	-------

- Boom Truck/Knuckle Truck (up to & including 5 tons)
- Dump Trucks (including articulating end dump, rockbuggy, side dump, belly dump, & trucks with pups) over 10 yards up to & including 20 yards
- Expeditor (electrical & pipefitting materials)
- Gin Pole Truck, Winch Truck, Wrecker (truck mounted "A" frame manufactured rating 5 tons & under)
- Greaser - Shop
- Semi or Truck & Trailer
- Thermal Plastic Layout Technician
- Traffic Control Technician
- Trucks/Jeeps (push or pull)

A2105	Group IV, including:	48.50	13.48	14.64	1.30	L&M 0.10	78.02
--------------	----------------------	-------	-------	-------	------	------------------------	-------

- Air Cushion or similar type vehicle
- All Terrain Vehicle

Wage benefits key: ANU=Annuity, BHR=basic hourly rate; H&W=health and welfare; IAF=industry advancement fund; LEG=legal fund; L&M=labor/management fund; PEN=pension fund; SAF=safety; SUI=supplemental unemployment insurance; S&L=SUI & LEG combined; TRN=training; THR=total hourly rate; VAC=vacation

Class Code	Classification of Laborers & Mechanics	BHR	H&W	PEN	TRN	Other	Benefits	THR
------------	--	-----	-----	-----	-----	-------	----------	-----

Truck Drivers
 *See per diem note on last page

						L&M	
A2105	Group IV, including:	48.50	13.48	14.64	1.30	0.10	78.02
	Buggymobile						
	Bull Lift & Fork Lift, Fork Lift with Power Boom & Swing Attachment (over 5 tons)						
	Bus Operator (over 30 passengers)						
	Cement Spreader, Dry						
	Combination Truck-Fuel & Grease						
	Compactor (when pulled by rubber tired equipment)						
	Dump Trucks (including rockbuggy, side dump, belly dump, & trucks with pups) up to & including 10 yards						
	Dumpster						
	Expeditor (general)						
	Fire Truck/Ambulance Driver						
	Flat Beds, Dual Rear Axle						
	Foam Distributor Truck Dual Axle						
	Front End Loader with Fork						
	Grease Truck						
	Hydro Seeder, Dual Axle						
	Hyster Operators (handling bulk aggregate)						
	Loadmaster (air & water operations)						
	Lumber Carrier						
	Ready-mix, (up to & including 7 yards)						
	Rigger (air/water/oilfield)						
	Tireman, Light Duty						
	Track Truck Equipment						
	Truck Vacuum Sweeper						
	Warehouseperson						
	Water Truck (Below 250 Bbls)						
	Water Truck (straight)						
	Water Wagon, Semi						

						L&M	
A2106	Group V, including:	47.62	13.48	14.64	1.30	0.10	77.14
	Buffer Truck						
	Bull Lifts & Fork Lifts, Fork Lifts with Power Boom & Swing Attachments (up to & including 5 tons)						
	Bus Operator (up to 30 passengers)						
	Farm Type Rubber Tired Tractor (when material handling or pulling wagons on a construction project)						
	Flat Beds, Single Rear Axle						
	Foam Distributor Truck Single Axle						
	Fuel Handler (station/bulk attendant)						
	Gear/Supply Truck						

Wage benefits key: ANU=Annuity, BHR=basic hourly rate; H&W=health and welfare; IAF=industry advancement fund; LEG=legal fund; L&M=labor/management fund; PEN=pension fund; SAF=safety; SUI=supplemental unemployment insurance; S&L=SUI & LEG combined; TRN=training; THR=total hourly rate; VAC=vacation

Class Code	Classification of Laborers & Mechanics	BHR	H&W	PEN	TRN	Other	Benefits	THR
------------	--	-----	-----	-----	-----	-------	----------	-----

Truck Drivers
 *See per diem note on last page

							L&M	
A2106	Group V, including:	47.62	13.48	14.64	1.30	0.10		77.14
	Gravel Spreader Box Operator on Truck							
	Hydro Seeder, Single Axle							
	Pickups (pilot cars & all light-duty vehicles)							
	Rigger							
	Swamper							
	Tack Truck (welders/gear)							
	Team Drivers (horses, mules, & similar equipment)							

Tunnel Workers, Laborers (The Alaska areas north of N63 latitude and east of W138 longitude)
 *See per diem note on last page

						L&M	LEG	
N2201	Group I, including:	44.28	10.55	21.51	2.00	0.35	0.20	78.89
	Brakeman							
	Mucker							
	Nipper							
	Storm Water Pollution Protection Plan Worker (SWPPP Worker - erosion and sediment control Laborer)							
	Topman & Bull Gang							
	Tunnel Track Laborer							

						L&M	LEG	
N2202	Group II, including:	45.38	10.55	21.51	2.00	0.35	0.20	79.99
	Burning & Cutting Torch							
	Certified Erosion Sediment Control Lead (CESCL Laborer)							
	Concrete Laborer							
	Floor Preparation, Core Drilling							
	Jackhammer/Chipping Gun or Pavement Breaker							
	Laser Instrument Operator							
	Nozzlemen, Pumpcrete or Shotcrete							
	Pipelayer Helper							

						L&M	LEG	
N2203	Group III, including:	46.37	10.55	21.51	2.00	0.35	0.20	80.98
	Miner							
	Retimberman							

						L&M	LEG	
N2204	Group IIIA, including:	51.18	10.55	21.51	2.00	0.35	0.20	85.79
	Asphalt Raker, Asphalt Belly Dump Lay Down							
	Drill Doctor (in the field)							
	Driller (including, but not limited to wagon drills, air-track drills, hydraulic drills)							

Wage benefits key: ANU=Annuity, BHR=basic hourly rate; H&W=health and welfare; IAF=industry advancement fund; LEG=legal fund; L&M=labor/management fund; PEN=pension fund; SAF=safety; SUI=supplemental unemployment insurance; S&L=SUI & LEG combined; TRN=training; THR=total hourly rate; VAC=vacation

Class Code	Classification of Laborers & Mechanics	BHR	H&W	PEN	TRN	Other	Benefits	THR
------------	--	-----	-----	-----	-----	-------	----------	-----

Tunnel Workers, Laborers (The Alaska areas north of N63 latitude and east of W138 longitude)
 *See per diem note on last page

						L&M	LEG	
N2204	Group IIIA, including:	51.18	10.55	21.51	2.00	0.35	0.20	85.79
	Pioneer Drilling & Drilling Off Tugger (all type drills)							
	Pipelayer							
	Powderman (Employee Possessor)							
	Storm Water Pollution Protection Plan Specialist (SWPPP Specialist)							
	Traffic Control Supervisor, DOT Qualified							

						L&M	LEG	
N2206	Group IIIB, including:	59.41	5.50	21.51	1.60	0.35	0.20	88.57
	Driller (including, but not limited to wagon drills, air-track drills, hydraulic drills)(over 5,000 hours)							
	Federal Powderman (Responsible Person in Charge)							
	Grade Checking (setting or transferring of grade marks, line and grade, GPS, drones)							
	Pioneer Drilling & Drilling Off Tugger (all type drills)(over 5,000 hours)							
	Stake Hopper							

Tunnel Workers, Laborers (The area that is south of N63 latitude and west of W138 longitude)
 *See per diem note on last page

						L&M	LEG	
S2201	Group I, including:	44.28	10.55	21.51	2.00	0.35	0.20	78.89
	Brakeman							
	Mucker							
	Nipper							
	Storm Water Pollution Protection Plan Worker (SWPPP Worker - erosion and sediment control Laborer)							
	Topman & Bull Gang							
	Tunnel Track Laborer							

						L&M	LEG	
S2202	Group II, including:	45.38	10.55	21.51	2.00	0.35	0.20	79.99
	Burning & Cutting Torch							
	Certified Erosion Sediment Control Lead (CESCL Laborer)							
	Concrete Laborer							
	Floor Preparation, Core Drilling							
	Jackhammer/Chipping Gun or Pavement Breaker							
	Laser Instrument Operator							
	Nozzlemen, Pumpcrete or Shotcrete							
	Pipelayer Helper							

						L&M	LEG	
S2203	Group III, including:	46.37	10.55	21.51	2.00	0.35	0.20	80.98
	Miner							
	Retimberman							

Wage benefits key: ANU=Annuity, BHR=basic hourly rate; H&W=health and welfare; IAF=industry advancement fund; LEG=legal fund; L&M=labor/management fund; PEN=pension fund; SAF=safety; SUI=supplemental unemployment insurance; S&L=SUI & LEG combined; TRN=training; THR=total hourly rate; VAC=vacation

Class Code	Classification of Laborers & Mechanics	BHR	H&W	PEN	TRN	Other Benefits	THR
------------	--	-----	-----	-----	-----	----------------	-----

Tunnel Workers, Laborers (The area that is south of N63 latitude and west of W138 longitude)
 *See per diem note on last page

						L&M	LEG	
S2204	Group IIIA, including:	51.18	10.55	21.51	2.00	0.35	0.20	85.79
	Asphalt Raker, Asphalt Belly Dump Lay Down							
	Drill Doctor (in the field)							
	Driller (including, but not limited to wagon drills, air-track drills, hydraulic drills)							
	Pioneer Drilling & Drilling Off Tugger (all type drills)							
	Pipelayer							
	Powderman (Employee Possessor)							
	Storm Water Pollution Protection Plan Specialist (SWPPP Specialist)							
	Traffic Control Supervisor, DOT Qualified							

						L&M	LEG	
S2206	Group IIIB, including:	59.41	5.50	21.51	1.60	0.35	0.20	88.57
	Driller (including, but not limited to wagon drills, air-track drills, hydraulic drills)(over 5,000 hours)							
	Federal Powderman (Responsible Person in Charge)							
	Grade Checking (setting or transferring of grade marks, line and grade, GPS, drones)							
	Pioneer Drilling & Drilling Off Tugger (all type drills)(over 5,000 hours)							
	Stake Hopper							

Tunnel Workers, Power Equipment Operators
 *See per diem note on last page

						L&M		
A2207	Group I	58.55	12.10	16.25	1.05	0.10		88.05
A2208	Group IA	60.86	12.10	16.25	1.05	0.10		90.36
A2209	Group II	57.55	12.10	16.25	1.05	0.10		87.05
A2210	Group III	56.60	12.10	16.25	1.05	0.10		86.10
A2211	Group IV	48.47	12.10	16.25	1.05	0.10		77.97

Wage benefits key: ANU=Annuity, BHR=basic hourly rate; H&W=health and welfare; IAF=industry advancement fund; LEG=legal fund; L&M=labor/management fund; PEN=pension fund; SAF=safety; SUI=supplemental unemployment insurance; S&L=SUI & LEG combined; TRN=training; THR=total hourly rate; VAC=vacation

Class Code	Classification of Laborers & Mechanics	BHR	H&W	PEN	TRN	Other Benefits	THR
------------	--	-----	-----	-----	-----	----------------	-----

* Per diem is an established practice for this classification. This means that per diem is an allowable alternative to board and lodging if all criteria are met. See 8 AAC 30.051-08 AAC 30.056, and the per diem information on page vii of this Pamphlet.

** Work in combination of classifications: Employees working in any combination of classifications within the diving crew (working diver, standby diver, and tender) in a shift are paid in the classification with the highest rate for a minimum of 8 hours per shift.

Wage benefits key: ANU=Annuity, BHR=basic hourly rate; H&W=health and welfare; IAF=industry advancement fund; LEG=legal fund; L&M=labor/management fund; PEN=pension fund; SAF=safety; SUI=supplemental unemployment insurance; S&L=SUI & LEG combined; TRN=training; THR=total hourly rate; VAC=vacation